



Contributions of the direct supply of belowground seagrass detritus and trapping of suspended organic matter to the sedimentary organic carbon stock in seagrass meadows

Toko Tanaya¹, Kenta Watanabe¹, Shoji Yamamoto², Chuki Hongo³, Hajime Kayanne², and Tomohiro Kuwae¹

¹Coastal and Estuarine Environment Research Group, Port and Airport Research Institute, 3-1-1 Nagase, Yokosuka 239-0826, Japan

²Department of Earth and Planetary Science, the University of Tokyo, Hongo 7-3-1, Bunkyo-ku, Tokyo 113-0033, Japan

³Department of Chemistry, Biology, and Marine Science, University of the Ryukyus, Senbaru 1, Nishihara, Okinawa 903-0213, Japan

Correspondence: Toko Tanaya (tanaya-t@p.mpat.go.jp)

Received: 5 December 2017 – Discussion started: 11 December 2017

Revised: 19 May 2018 – Accepted: 11 June 2018 – Published: 3 July 2018

Abstract. Carbon captured by marine living organisms is called “blue carbon”, and seagrass meadows are a dominant blue carbon sink. However, our knowledge of how seagrass increases sedimentary organic carbon (OC) stocks is limited. We investigated two pathways of OC accumulation: trapping of organic matter in the water column and the direct supply of belowground seagrass detritus. We developed a new type of box corer to facilitate the retrieval of intact cores that preserve the structures of both sediments (including coarse sediments and dead plant structures) and live seagrasses. We measured seagrass density, total OC mass (OC_{total}) (live seagrass OC biomass (OC_{bio}) + sedimentary OC mass (OC_{sed})), and the stable carbon isotope ratio ($\delta^{13}C$) of OC_{sed} and its potential OC sources at *Thalassia hemprichii* dominated back-reef and *Enhalus acoroides* dominated estuarine sites in the tropical Indo-Pacific region. At points with vegetation, OC_{bio} accounted for 25 % and OC_{sed} for 75 % of OC_{total} ; this contribution of OC_{bio} to OC_{total} is higher than in globally compiled data. Belowground detritus accounted for ~90 % of the OC mass of dead plant structures (>2 mm in size) (OC_{dead}). At the back-reef site, belowground seagrass biomass, OC_{dead} , and $\delta^{13}C$ of OC_{sed} ($\delta^{13}C_{sed}$) were positively correlated with OC_{sed} , indicating that the direct supply of belowground seagrass detritus is a major mechanism of OC_{sed} accumulation. At the estuarine site, aboveground seagrass biomass was positively correlated with OC_{sed} but $\delta^{13}C_{sed}$ did not correlate with OC_{sed} , indicating that trapping of suspended OC by seagrass leaves is a major mech-

anism of OC_{sed} accumulation there. We inferred that the relative importance of these two pathways may depend on the supply (productivity) of belowground biomass. Our results indicate that belowground biomass productivity of seagrass meadows, in addition to their aboveground morphological complexity, is an important factor controlling their OC stock. Consideration of this factor will improve global blue carbon estimates.

1 Introduction

The carbon captured by marine living organisms has been termed “blue carbon” (Nelleman et al., 2009). Among marine ecosystems, the organic carbon (OC) accumulation rate of vegetated coastal systems such as seagrass meadows, mangrove forests, and salt marshes is estimated to be higher than that of terrestrial forests (McLeod et al., 2011). The global total OC stock contained in the top 1 m of sediment and in the plant biomass in these vegetated ecosystems is estimated to be 0.63–8.54 Pg C (Pendleton et al., 2012). Thus, vegetated ecosystems are expected to contribute greatly to the mitigation of global warming. In this regard, seagrass meadows have attracted particular attention because they are one of the most dominant blue carbon sinks (Kennedy et al., 2010; Fourqurean et al., 2012). However, the OC stock of a seagrass meadow is highly variable, depending on geographical region (Miyajima et al., 2015), seagrass species (Lavery et

al., 2013), microlocation within a seagrass patch (Ricart et al., 2015), and the patch scale (Miyajima et al., 2017). Hence, to develop a precise methodology of OC estimation and reduce the uncertainty of the global estimate, it is necessary to understand the factors controlling OC stocks in seagrass meadows (Duarte et al., 2013).

Seagrass meadows enhance the accumulation of sedimentary OC by directly supplying abundant OC from their high production (Duarte et al., 2010), by reducing sediment resuspension, and by promoting sedimentation of autochthonous and allochthonous OC in the water column (Agawin and Duarte, 2002; Gacia and Duarte, 2001; Gacia et al., 2003; Hendriks et al., 2008). However, our knowledge of the factors that mediate the sequestration of sedimentary OC by seagrass meadows is limited. For example, the chemical recalcitrance of the supplied organic matter (Trevathan-Tackett et al., 2017; Watanabe and Kuwae, 2015) and the specific surface area of the sediment (Miyajima et al., 2017) are factors that control the sedimentary OC stock in seagrass meadows. Recent studies have also shown that, in addition to chemical and physical factors, biological factors such as primary productivity, seagrass shoot density, and the amount of leaf material (as indicated by the leaf area index) also affect the sedimentary OC stock (Samper-Villarreal et al., 2016; Serano et al., 2014, 2016b). In addition, an increase in the amount of leaf material may enhance the trapping of suspended OC and, thus, the accumulation of sedimentary OC (Dahl et al., 2016; Gacia et al., 1999). An increase in seagrass density may also cause an increase in seagrass production per unit area and thus enhance the direct supply of seagrass-derived OC. However, few previous studies have analyzed the controlling factors and provenance of sedimentary OC along a seagrass biomass gradient (Kennedy et al., 2004, 2010; Samper-Villarreal et al., 2016; Howard et al., 2018). Kennedy et al. (2004, 2010) and Howard et al. (2018) found no significant relationship between seagrass biomass and sedimentary OC, whereas Samper-Villarreal et al. (2016) concluded that autochthonous sedimentary OC increased as the leaf area index increased. However, they did not show the mechanism (pathway) by which seagrass-derived OC became sedimentary OC; that is, they did not show whether the seagrass trapped seagrass-derived OC suspended in the water column or directly supplied seagrass-derived carbon to the sediments.

To assess the effect of seagrass on the sedimentary OC stock, it is important to examine all stock components, including live and dead aboveground and belowground biomass in the sediment column, and their origins. For this reason, it is necessary to retrieve intact cores, because both macroscopic plant materials (Miyajima et al., 1998) and OC derived from calcareous organisms such as corals, foraminifera, molluscs, and coralline algae (Ingalls et al., 2003; Versteegh et al., 2011) occur in the coarse sediment fraction (sand and gravels), especially in tropical seagrass meadows around coral reefs (Suzuki, 2005). However, to our

knowledge, all previous studies have only examined some of the stock components, for example, the fine sediment fraction (< 1–2 mm diameter) (Hemminga et al., 1994; Miyajima et al., 2015; Kennedy et al., 2004; Ricart et al., 2015), dead plant structures (Cebrian et al., 2000), surface sediment (Baron et al., 2004), and small subsamples from a core (Dahl et al., 2016).

In this study, to investigate the pathways of sedimentary OC accumulation in seagrass meadows, especially the direct supply of belowground seagrass detritus, we used intact cores that included all live and dead seagrasses and sediments and then performed the OC mass and stable carbon isotope analyses of all components of the cores to examine the origin of the OC along a seagrass biomass gradient.

2 Materials and methods

2.1 Study sites

To assess the relationship between seagrass and the sedimentary OC stock, we chose tropical Indo-Pacific seagrass meadow sites. Globally, the tropical Indo-Pacific region is the world's largest bioregion and contains the highest diversity of seagrasses, which are distributed predominantly on coral reef flats (Short et al., 2007). Globally, the total documented seagrass area is 164 000 km² (Green and Short, 2003), and the total seagrass area in the Indo-Pacific region, excluding Australia, where both tropical and temperate seagrasses are distributed, is around 32 400 km², or about 20 % of the total area. Furthermore, given that about half of the documented seagrass habitat in Australia is composed of tropical seagrasses (Kirkman, 1997), the total area of tropical Indo-Pacific seagrass habitat reaches approximately 116 000 km², accounting for 70 % of the global seagrass area. Thus, accurate estimation of the blue carbon stock of seagrasses in the tropical Indo-Pacific region is important for the estimation of the global seagrass carbon stock. However, in spite of the geographical importance of this region, reports on seagrass OC stocks there are limited (Lavery et al., 2013; Miyajima et al., 2015).

We obtained cores from two Indo-Pacific tropical seagrass meadow sites from 13 to 23 August 2014. The two sites, a back-reef site (Shiraho reef) and an estuarine site (Fukido estuary), both located around Ishigaki, Okinawa, southwestern Japan (Fig. 1), have different allochthonous carbon input amounts. The back-reef site is situated on a well-developed reef flat about 1 km wide, where seagrass meadows, dominated by *Thalassia hemprichii*, are distributed between 100 and 300 m from the shoreline. The site is about 2 km south of the mouth of the Todoroki River, and most sediments transported by the river accumulate on its northern side (Mitsumoto et al., 2000) because the prevailing current, which is controlled by large channels in the reef, is northward (Tamura et al., 2007). Therefore, terrestrial sediment input to the back-

reef site is low. The mud (silt + clay) content of the surface sediment of the seagrass meadows at the site ranges from 1.2 to 3.9 % (mean 2.3 %) (Tanaka and Kayanne, 2007). The estuarine site is located near the mouth of a small river, which is bordered by small mangrove forests. The freshwater inflow is low, so water exchange between the river and estuary is controlled mainly by tidal motion (Terada et al., 2007). The dominant seagrass species at the site is *Enhalus acoroides*. The mud content of the surface sediment in the seagrass meadows at the estuarine site ranges from 0.9 to 6.4 % (mean 3.6 %) (Tanaka and Kayanne, 2007).

2.2 Core sampling

We developed a new box corer to facilitate the retrieval of intact cores that preserve sedimentary structures as well as aboveground and belowground live and dead seagrasses (Fig. 2). The box corer is 15 cm wide, 15 cm deep, and 17 cm high and is made of stainless steel so that it can cut through roots and rhizomes. A shutter 1 cm above the bottom of the corer is designed to cut through the relatively hard belowground seagrasses, making it possible to obtain intact cores. The corer also has a lid to prevent the loss of surficial sediments from the core during underwater sampling. The corer is large enough to retrieve all components of the OC stock whole: shoots, live and dead aboveground and belowground seagrasses, and old skeletal OC in sand and gravel derived from calcareous organisms such as corals, foraminifera, molluscs, and coralline algae. Most cores obtained with the corer were about 15 cm long, but we were not able to insert the core to its full length at three sampling points because of the presence of large gravels in the sediment. We were able to collect all of the seagrass biomass at these points, however.

To measure the total OC mass (OC_{total}), we quantified three components of the box corer samples (Fig. 3): (1) live seagrasses (OC_{bio}); (2) dead plant structures (> 2 mm in size: dead seagrass leaves, sheaths, rhizomes, and roots detached from live structures) (OC_{dead}); and (3) OC in the coarse (> 1 mm diameter) sediments (excluding dead plant structures > 2 mm in size) (OC_{csed}). We also collected samples with cylinder cores so that we could obtain depth profiles of OC in the fine (< 1 mm diameter) sediments (including dead plant structures < 1 mm in size) (OC_{fsed}). It was technically impossible to obtain these profiles with the box corer because of its large surface sampling area and the high density of the belowground structures (Fig. 2c). The samples retrieved by the box corer were immediately sieved through a 1 mm mesh sieve in situ to obtain the > 1 mm fractions of the OC_{bio} , OC_{dead} , and OC_{csed} . Live seagrasses have air-filled lacunae so that they float; thus, we considered buoyant seagrasses captured by the sieve to be OC_{bio} (Borum et al., 2006). We merged any dead plant structures attached to live seagrasses into OC_{bio} because their mass was usually very small. We collected a cylinder core 10–16 cm long with an acrylic pipe (internal diameter 6.6 cm) from a point immediately adjacent

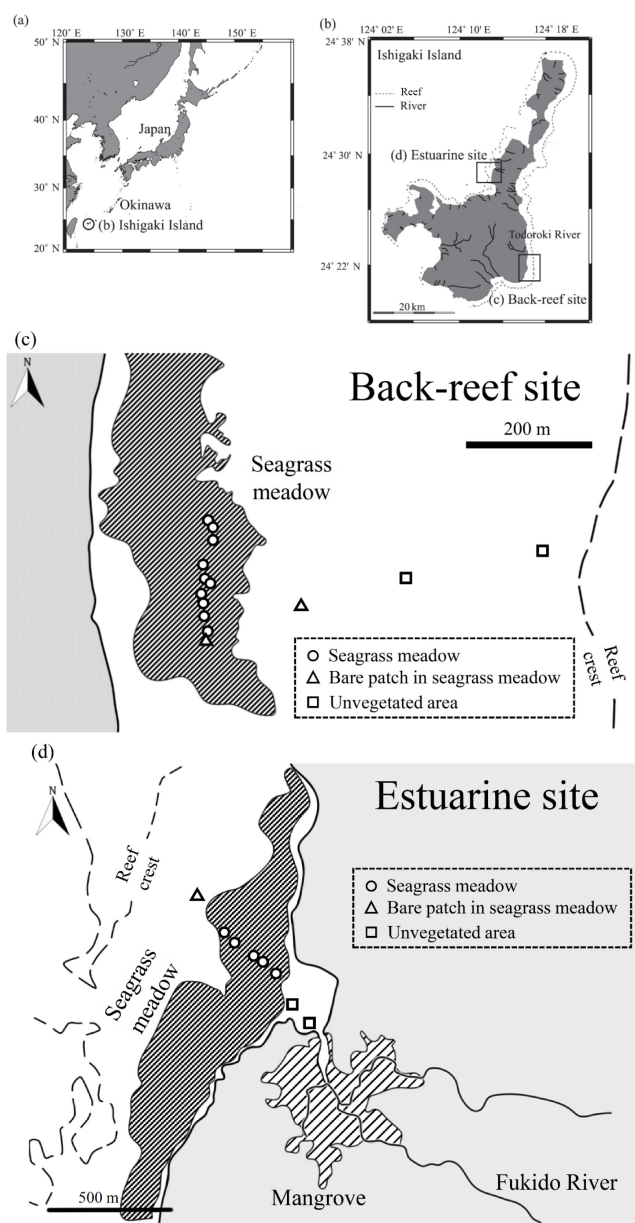


Figure 1. Study sites. (a, b) Study site location on Ishigaki, Japan. Sampling points at (c) the back-reef site and (d) the estuarine site. At the back-reef site, the circle indicating the southernmost vegetated sampling point actually represents a cluster of six sampling points.

to each box core. We subdivided each cylinder core into 1 cm long subsamples from the surface to the bottom of the core.

We obtained 20 paired samples (one box and one cylinder core) from the back-reef site and eight paired samples from the estuarine site. At the back-reef site, we collected 16 paired samples from vegetated points in the seagrass meadows, two from bare patches in the seagrass meadows, and two from unvegetated areas (Fig. 1c). Similarly, at the estuarine site, we collected five paired samples from vegetated

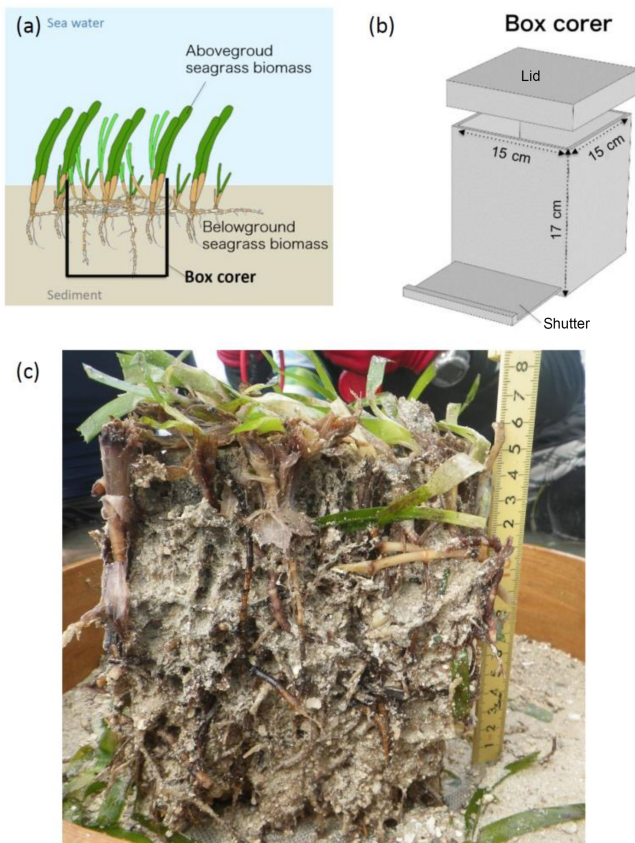


Figure 2. The newly developed box corer and a sampled core. Schematic diagrams of (a) a cross section of a core and (b) the design of the corer. (c) Photograph of a core from the back-reef site. The dominant seagrass species is *Thalassia hemprichii*.

points, one pair from a bare point, and two paired samples from unvegetated areas near the river mouth (Fig. 1d).

Potential sources of sedimentary OC (OC_{sed}) were also collected at both sites and analyzed for $\delta^{13}C$. Samples of seagrass leaves were collected from all dominant seagrass species at each site: *T. hemprichii*, *Cymodocea rotundata*, *C. serrulata*, and *Halodule uninervis* at the back-reef site, and *E. acoroides*, *T. hemprichii*, and *C. serrulata* at the estuarine site. Samples for determining the $\delta^{13}C$ of algae and corals were taken from epiphytes, benthic microalgae, and the dominant coral species (mainly *Acropora* spp. and *Porites* spp.) at the sites. Epiphytes were collected from the seagrass leaves by using a stainless steel scraper, and benthic microalgae were extracted from the surface sediment (up to approximately 1 mm depth) by the method of Kuwae et al. (2008). All obtained samples were stored in polyethylene bags at $-20^{\circ}C$ until analysis.

We used the published $\delta^{13}C$ data of suspended OC (collected about 1 km off the outer reef edge of Ishigaki) and of terrestrial particulate organic matter (POM; collected from the Fukido River, Ishigaki) from Miyajima et al. (2015). We

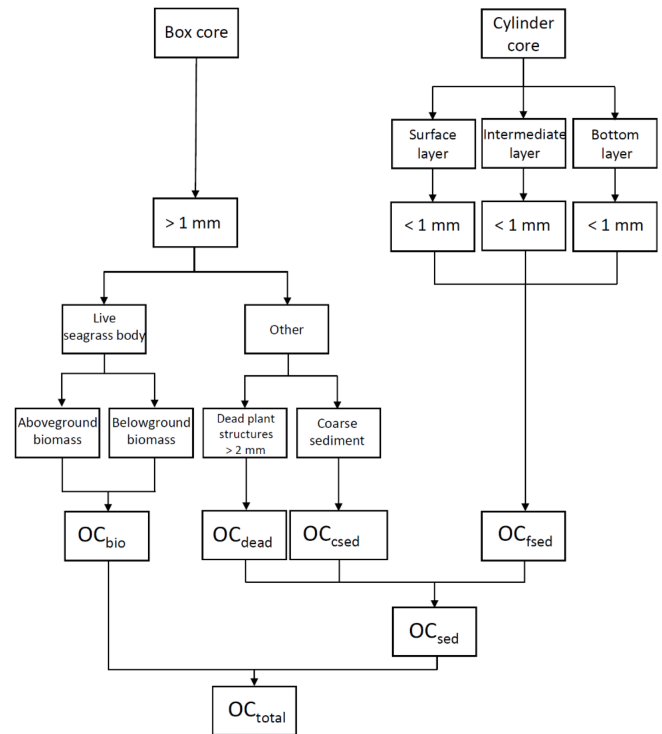


Figure 3. Calculation of total OC mass (OC_{total} ; $g\ C\ m^{-2}$) in the top 0.15 m layer. OC_{sed} is sedimentary OC, OC_{bio} is OC in live seagrasses, OC_{dead} is OC in dead plant structures ($> 2\ mm$ in size: dead seagrass leaves, sheaths, rhizomes, and roots detached from live structures), OC_{csed} is OC in the coarse ($> 1\ mm$ diameter) sediments (excluding dead plant structures $> 2\ mm$ in size), and OC_{fsed} is OC in the fine ($< 1\ mm$ diameter) sediments (including dead plant structures $< 1\ mm$ in size).

assumed that the published $\delta^{13}C$ data were normally distributed.

2.3 OC and stable isotope analysis

We identified live seagrasses to the species level and separated aboveground biomass (leaf blades) from belowground biomass (leaf sheaths, rhizomes, and roots). Then we dried all parts at $60^{\circ}C$ and weighed them. Box corer sediments were dried at $60^{\circ}C$ and sieved through a 2 mm mesh sieve, and the included dead plant structures ($> 2\ mm$ in size) were picked out and weighed. To ensure homogeneity of subsamples, the coarse sediments (excluding the dead plant structures) were first crushed to approximately 1 mm grains with a jaw crusher (Jaw Crusher PULVERISETTE 1 Model I classic line, FRITSCH, Ltd., Idar-Oberstein, Germany) and then divided into 16 or 64 subsamples with a splitter (Simple microsampler, Iwamoto Mineral, Ltd., Tokyo, Japan). The cylinder core samples were subdivided into surface (0–1 cm depth), intermediate (5–8 cm depth), and bottom (9–16 cm depth) layers and dried at $60^{\circ}C$. For the OC_{fsed} analysis, each layer was sieved through a 1 mm mesh sieve and then subdi-

vided into two or four subsamples with the splitter. All subsamples used for chemical analyses were weighed and then powdered and homogenized in an agate mill.

For OC analysis, the homogenized samples were placed in silver containers (to prevent the loss of acid-soluble OC in carbonate sediments) and pretreated with hydrochloric acid to remove carbonates (Yamamuro and Kayanne, 1995). First, each sample was weighed in a silver container and its weight was adjusted to about 20 mg. Then, 1 N HCl was carefully and gradually added until bubbles were no longer seen, and the sample was dried at 60 °C overnight and at 105 °C for 1 h. The dried sample was then wrapped in tin foil. We measured the total OC concentration and the stable carbon isotopic ratio of each sample with an elemental analyzer-connected isotope ratio mass spectrometer (FLASH EA 1112/DELTA^{plus} Advantage, Thermo Electron, Inc., Massachusetts, USA). The stable carbon isotope ratio ($\delta^{13}\text{C}$) is reported as the relative per mil deviation from VPDB (Vienna Pee Dee Belemnite). The analytical precision of the isotope ratio mass spectrometer, based on the standard deviation of $\delta^{13}\text{C}$ values of internal reference replicates, was < 0.2 ‰.

2.4 Determination of the mass and $\delta^{13}\text{C}$ of OC

We calculated OC_{total} per unit area (g C m^{-2}) at each sampling point by summing the OC_{bio} and OC_{sed} components in the top 0.15 m (Fig. 3) as follows:

$$\text{OC}_{\text{total}} = \text{OC}_{\text{bio}} + \text{OC}_{\text{sed}}. \quad (1)$$

OC_{bio} was calculated as

$$\text{OC}_{\text{bio}} = \sum_i (a_i x_i + b_i y_i), \quad (2)$$

where a_i and b_i are the averaged OC concentrations ($\text{g C g}^{-1} \text{DW}$) of the aboveground and belowground biomasses, respectively, of the i th seagrass species collected at three different sampling points (except *C. serrulata*, which was collected at only one sampling point at the estuarine site), and x_i and y_i are the aboveground and belowground biomasses (g m^{-2}), respectively, of the i th seagrass species. The biomasses of *Syringodium isoetifolium*, *Halophila ovalis*, and an unidentified species at the back-reef site accounted for < 0.1 % of the total biomass, so they were excluded from this calculation. The averaged OC concentrations and aboveground and belowground biomass dry weights are summarized in Table 1.

OC_{sed} was calculated as follows:

$$\text{OC}_{\text{sed}} = \text{OC}_{\text{dead}} + \text{OC}_{\text{csed}} + \text{OC}_{\text{fsed}}. \quad (3)$$

The terms of Eq. (3) were calculated by the following equations:

$$\text{OC}_{\text{dead}} = \frac{1}{100} (\% \text{OC}_{\text{leaf}} \times \rho_{\text{leaf}} + \% \text{OC}_{\text{shrhr}} \times \rho_{\text{shrhr}} + \% \text{OC}_{\text{root}} \times \rho_{\text{root}}) \times h, \quad (4)$$

$$\text{OC}_{\text{csed}} = \frac{1}{100} (\% \text{OC}_{\text{csed}} \times \rho_{\text{csed}}) \times h, \quad (5)$$

$$\text{OC}_{\text{fsed}} = \frac{1}{3} \times \frac{1}{100} (\% \text{OC}_{\text{fseds}} \times \rho_{\text{fseds}} + \% \text{OC}_{\text{fsedm}} \times \rho_{\text{fsedm}} + \% \text{OC}_{\text{fsedb}} \times \rho_{\text{fsedb}}) \times h, \quad (6)$$

where %OC is the concentration of OC (% DW) ($n = 3$); ρ is the dry density (g DW m^{-3}) of each component (indicated by subscripts: leaf, dead leaf; shrhr, dead sheath and rhizome; root, dead root; csed, coarse sediment; fseds, fine sediment of the surface layer; fsedm, fine sediment of the intermediate layer; fsedb, fine sediment of the bottom layer), and h is the sample thickness (0.15 m). OC_{fsed} is the averaged OC mass of the three layers (surface, medium, and bottom) of fine sediment.

$\delta^{13}\text{C}$ of OC_{sed} ($\delta^{13}\text{C}_{\text{sed}}$) at each sampling point was calculated as follows:

$$\delta^{13}\text{C}_{\text{sed}} = \frac{1}{\text{OC}_{\text{sed}}} (\text{OC}_{\text{dead}} \times \delta^{13}\text{C}_{\text{dead}} + \text{OC}_{\text{csed}} \times \delta^{13}\text{C}_{\text{csed}} + \delta^{13}\text{C}_{\text{fsed}}), \quad (7)$$

where $\delta^{13}\text{C}_{\text{dead}}$ is the averaged $\delta^{13}\text{C}$ value of dead plant structures (sheath and rhizomes, and roots) at the back-reef and estuarine sites. We did not include leaf detritus in the calculation of $\delta^{13}\text{C}_{\text{sed}}$ because (1) the leaf fragments were so small that we could not remove epiphytes from them, and (2) their mass was much smaller than that of the sheath and rhizomes and roots, so we considered its contribution to $\delta^{13}\text{C}_{\text{sed}}$ to be negligible. We used the $\delta^{13}\text{C}_{\text{dead}}$ value at each site for the calculation of $\delta^{13}\text{C}_{\text{sed}}$. The standard deviation (SD) of $\delta^{13}\text{C}_{\text{sed}}$ derived from the SD of $\delta^{13}\text{C}_{\text{dead}}$ was smaller than 0.1 ‰. $\delta^{13}\text{C}_{\text{csed}}$ is the $\delta^{13}\text{C}$ value of OC_{csed} . $\delta^{13}\text{C}_{\text{fsed}}$ is the averaged $\delta^{13}\text{C}$ value of OC_{fsed} multiplied by the OC mass of each layer and was calculated as follows:

$$\delta^{13}\text{C}_{\text{fsed}} = \frac{1}{3} \times \frac{1}{100} (\% \text{OC}_{\text{fseds}} \times \rho_{\text{fseds}} \times \delta^{13}\text{C}_{\text{fseds}} + \% \text{OC}_{\text{fsedm}} \times \rho_{\text{fsedm}} \times \delta^{13}\text{C}_{\text{fsedm}} + \% \text{OC}_{\text{fsedb}} \times \rho_{\text{fsedb}} \times \delta^{13}\text{C}_{\text{fsedb}}) \times h. \quad (8)$$

The averaged values of the organic carbon concentration, $\delta^{13}\text{C}$, and dry density of sediment and dead plant structures are summarized in Table 2.

3 Results

3.1 Seagrass biomass and species composition at each site

At the back-reef site, the average (\pm SD) aboveground and belowground biomass values were $74 \pm 45 \text{ g DW m}^{-2}$ ($n = 16$) and $675 \pm 450 \text{ g DW m}^{-2}$ ($n = 16$), respectively (Table 1). The dominant species was *T. hemprichii*, accounting for 76.7 % of the total biomass; *C. rotundata* (18.0 %), *C. serrulata* (3.3 %), *H. uninervis* (1.7 %), *H.*

Table 1. Organic carbon contents and dry weights of each component of living biomass at the back-reef and estuarine sites.

	Back-reef		Estuary	
	%OC (% DW) mean \pm SD (<i>n</i>)	Dry weight (g m ⁻²) mean \pm SD (<i>n</i>)	%OC (% DW) mean \pm SD (<i>n</i>)	Dry weight (g m ⁻²) mean \pm SD (<i>n</i>)
Aboveground biomass	38.47 \pm 3.06 (39)	74 \pm 45 (16)	35.95 \pm 2.28 (20)	70 \pm 34 (5)
Belowground biomass	31.35 \pm 2.93 (20)	675 \pm 450 (16)	30.38 \pm 2.55 (13)	1354 \pm 847 (5)

Table 2. Organic carbon content, $\delta^{13}\text{C}$, and dry density of each of sediment and dead plant component at the back-reef and estuarine sites.

	Back-reef			Estuary		
	Organic carbon		Dry density (mg cm ⁻³)	Organic carbon		Dry density (mg cm ⁻³)
	%OC (% DW) mean \pm SD (<i>n</i>)	$\delta^{13}\text{C}$ (‰ vs. VPDB) mean \pm SD (<i>n</i>)	mean \pm SD (<i>n</i>)	%OC (% DW) mean \pm SD (<i>n</i>)	$\delta^{13}\text{C}$ (‰ vs. VPDB) mean \pm SD (<i>n</i>)	mean \pm SD (<i>n</i>)
Fine sediment	0.37 \pm 0.13 (60)	-12.8 \pm 0.8 (60)	893 \pm 303 (60)	0.42 \pm 0.20 (24)	-17.4 \pm 3.6 (24)	760 \pm 294 (24)
Coarse sediment	0.32 \pm 0.13 (20)	-12.8 \pm 1.1 (20)	292 \pm 152 (20)	0.26 \pm 0.08 (8)	-15.9 \pm 1.5 (8)	475 \pm 142 (8)
Dead leaf	24.80 \pm 3.07 (3)	-8.9 \pm 0.6 ^a (5)	0.05 \pm 0.04 (20)	23.31 \pm 3.86 ^b (3)	-9.3 \pm 0.2 ^a (5)	0.03 \pm 0.04 (8)
Dead sheath and rhizome	21.29 \pm 4.07 (3)	-8.9 \pm 0.6 ^a (5)	0.55 \pm 0.63 (20)	27.52 \pm 1.75 ^b (3)	-9.3 \pm 0.2 ^a (5)	1.44 \pm 1.86 (8)
Dead root	19.25 \pm 1.67 (3)	-8.9 \pm 0.6 ^a (5)	0.26 \pm 0.25 (20)	19.94 \pm 5.89 ^b (3)	-9.3 \pm 0.2 ^a (5)	0.31 \pm 0.35 (8)

^a Total of sheath and rhizomes, and root. ^b At one sampling point (FS1) where the dominant species was different, the values were dead leaf, 25.77 %; dead sheath and rhizome, 19.05 %; and dead root, 19.21 %.

ovalis (<0.1 %), *S. isoetifolium* (<0.1 %), and an unidentified species (<0.1 %) were minor components at the back-reef site. At the estuarine site, the average aboveground and belowground biomasses were 70 \pm 34 g DW m⁻² (*n* = 5) and 1354 \pm 847 g DW m⁻² (*n* = 5), respectively (Table 1). The dominant species was *E. acoroides*, accounting for 92.3 % of the total biomass; *T. hemprichii* (7.0 %), *C. serrulata* (0.6 %), and *H. uninervis* (<0.1 %) were minor components.

3.2 OC mass

The average OC density (g C cm⁻³) did not differ significantly among the fine sediment layers at either the back-reef site (paired *t*-test, Bonferroni adjusted *P* > 0.05) or the estuarine site (Wilcoxon signed rank test, Bonferroni adjusted *P* > 0.05). The averaged OC_{bio}, OC_{dead}, OC_{fscd}, OC_{scd}, and OC_{total} values were significantly higher at points with vegetation than at points without vegetation at both the back-reef site (OC_{bio}, *t* = -6.23, d.f. = 15, *P* < 0.001; OC_{dead}, *W* = 0, *P* < 0.001; OC_{fscd}, *t* = -2.61, d.f. = 18, *P* = 0.018; OC_{scd}, *t* = -2.85, d.f. = 18, *P* = 0.011; OC_{total}, *t* = -3.44, d.f. = 18, *P* = 0.003) (Fig. 4a and b) and the estuarine site (OC_{bio}, *t* = -3.61, d.f. = 4, *P* = 0.022; OC_{dead}, *W* = 0, *P* = 0.036; OC_{fscd}, *t* = -2.59, d.f. = 6, *P* = 0.041; OC_{scd}, *t* = -3.33, d.f. = 6, *P* = 0.016; OC_{total}, *t* = -4.24, d.f. = 6, *P* = 0.005) (Fig. 4c and d). At points with vegetation, the averaged OC_{fscd} and OC_{scd} values did not significantly differ between the sites (OC_{fscd}, *t* = 0.33, d.f. = 19, *P* > 0.05; OC_{scd}, *t* = -1.53, d.f. = 19, *P* > 0.05), whereas the aver-

aged OC_{bio}, OC_{dead}, OC_{scd} and OC_{total} values were significantly higher at the estuarine site than at the back-reef site (OC_{bio}, *t* = -2.25, d.f. = 19, *P* = 0.036; OC_{dead}, *W* = 11, *P* = 0.015; OC_{scd}, *t* = -4.86, d.f. = 19, *P* < 0.001; OC_{total}, *t* = -2.34, d.f. = 19, *P* = 0.030) (Fig. 4b and d). At points with vegetation, OC_{total} ranged from 531 to 1785 g C m⁻² across both sites. OC_{scd}, which ranged from 433 to 1147 g C m⁻² and was the main component of OC_{total}, accounted for 75.1 \pm 13.1 % DW of OC_{total}. Hence, the contribution of the live seagrass itself (OC_{bio}) was minor (24.9 \pm 13.1 % DW). OC_{fscd} was the major component of OC_{scd}, accounting for 55.6 \pm 12.5 % DW of OC_{total}; OC_{scd} and OC_{dead} were minor components, accounting for 15.0 \pm 7.2 % DW and 4.5 \pm 4.1 % DW of OC_{total}, respectively.

The average aboveground and belowground biomasses in OC_{bio} did not differ significantly between the sites (Fig. 5a) (aboveground biomass, *t* = 0.30, d.f. = 19, *P* > 0.05; belowground biomass, *t* = -1.75, d.f. = 4.67, *P* > 0.05). Belowground biomass accounted for 89.1 \pm 4.4 % DW of OC_{bio} (Fig. 5b). The averaged biomasses of aboveground (i.e., leaf) and belowground (i.e., sheath and rhizome, and root) detritus in OC_{dead} did not differ significantly between the sites (aboveground detritus, *t* = 0.60, d.f. = 7.82, *P* > 0.05; belowground detritus, *W* = 28, *P* > 0.05) (Fig. 5c). The biomass of belowground detritus accounted for 90.8 \pm 12.0 % DW of OC_{dead} (Fig. 5d). The biomasses of sheath and rhizome, and root, accounted for 65.5 \pm 19.2 % DW and 25.3 \pm 16.0 % DW of OC_{dead}, respectively.

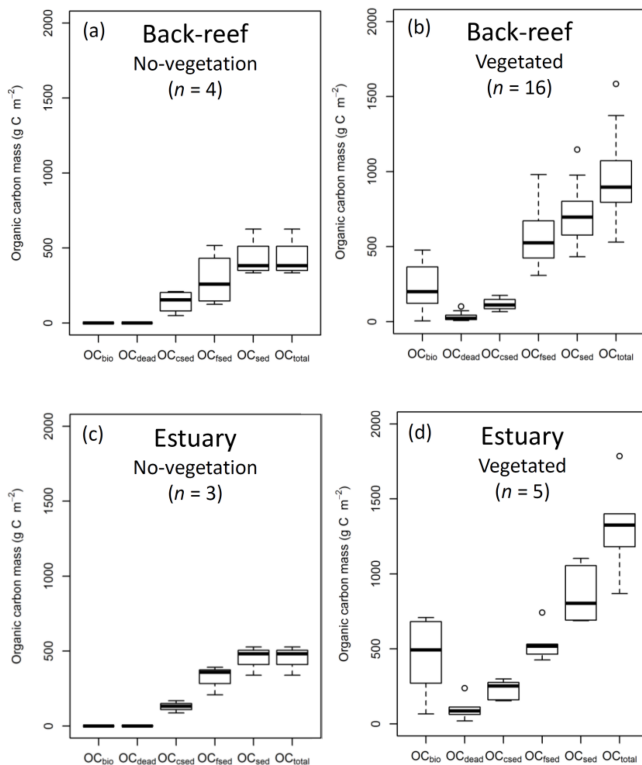


Figure 4. OC mass (OC_{bio} , OC_{dead} , OC_{csed} , OC_{fsed} , OC_{sed} , and OC_{total}) at (a) no-vegetation (bare and unvegetated) points at the back-reef site, (b) vegetated points at the back-reef site, (c) no-vegetation points at the estuarine site, and (d) vegetated points at the estuarine site. Boxes show the 25 and 75 % quantiles; horizontal bands inside the boxes are median values; whiskers show maximum and minimum values; and the open circles are outliers.

3.3 $\delta^{13}C$ of OC

The average $\delta^{13}C_{sed}$ at the back-reef site ($-12.6 \pm 0.7\%$) was significantly higher than that of the estuarine site ($-16.6 \pm 3.1\%$) ($t = 3.61$, d.f. = 7, $P = 0.008$), and it was also significantly higher than the $\delta^{13}C$ values of algae and corals ($-15.2 \pm 1.9\%$) ($W = 2753$, $P < 0.001$), suspended POM ($-21.9 \pm 1.6\%$) ($t = 15.45$, d.f. = 8, $P < 0.001$), and terrestrial POM ($-28.7 \pm 1.5\%$) ($t = 29.25$, d.f. = 8, $P < 0.001$). However, average $\delta^{13}C_{sed}$ at the back-reef site was significantly lower than $\delta^{13}C$ of seagrass ($-9.2 \pm 1.3\%$) ($t = -12.64$, d.f. = 57, $P < 0.001$) (Fig. 6). Average $\delta^{13}C_{sed}$ at the estuarine site did not differ significantly from $\delta^{13}C$ of algae and corals ($W = 457$, $P > 0.05$), but it was significantly higher than $\delta^{13}C$ of both suspended POM ($t = 4.36$, d.f. = 14, $P < 0.001$) and terrestrial POM ($t = 10.05$, d.f. = 14, $P < 0.001$), and significantly lower than $\delta^{13}C$ of seagrass ($t = -6.66$, d.f. = 8, $P < 0.001$). The average $\delta^{13}C$ among fine sediment layers did not differ significantly at either the back-reef site (Wilcoxon signed rank test, Bonferroni adjusted $P > 0.05$) or the estuarine site (paired t -test, Bonferroni adjusted $P > 0.05$).

3.4 Relationships among biomass, OC mass, and $\delta^{13}C$

At the back-reef site, we found significant correlations between OC_{sed} and DW-based (not carbon-based) biomass ($F_{1,18} = 11.63$, $P = 0.003$, $r^2 = 0.39$) (Fig. 7a), OC_{sed} and aboveground biomass ($F_{1,18} = 16.38$, $P < 0.001$, $r^2 = 0.48$) (Fig. 7b), OC_{sed} and belowground biomass ($F_{1,18} = 10.95$, $P = 0.004$, $r^2 = 0.38$) (Fig. 7c), OC_{sed} and OC_{dead} ($F_{1,18} = 4.55$, $P = 0.047$, $r^2 = 0.20$) (Fig. 7d), and OC_{sed} and $\delta^{13}C_{sed}$ ($F_{1,18} = 11.51$, $P = 0.003$, $r^2 = 0.39$) (Fig. 7e). We also found significant correlations between $\delta^{13}C_{sed}$ and belowground biomass ($F_{1,18} = 4.68$, $P = 0.044$, $r^2 = 0.21$) (Fig. 7f), and between $\delta^{13}C_{sed}$ and OC_{dead} ($F_{1,18} = 13.18$, $P = 0.002$, $r^2 = 0.42$) (Fig. 7g). We also found significant positive correlations between aboveground and belowground biomass ($F_{1,18} = 94.10$, $P < 0.001$, $r^2 = 0.84$). At the estuarine site, we found significant correlations between OC_{sed} and aboveground biomass ($F_{1,6} = 8.18$, $P = 0.029$, $r^2 = 0.58$) (Fig. 7b) and between OC_{sed} and OC_{dead} ($F_{1,6} = 6.94$, $P = 0.039$, $r^2 = 0.54$) (Fig. 7d) but not between OC_{sed} and biomass ($F_{1,6} = 3.08$, $P > 0.05$, $r^2 = 0.34$) (Fig. 7a), OC_{sed} and belowground biomass (Fig. 7c) ($F_{1,6} = 2.94$, $P > 0.05$, $r^2 = 0.33$), or OC_{sed} and $\delta^{13}C_{sed}$ ($F_{1,6} = 0.040$, $P > 0.05$, $r^2 < 0.01$) (Fig. 7e). The slope of the regression line of OC_{sed} against aboveground biomass did not differ significantly between the sites (ANCOVA, $F = 1.09$, d.f. = 1, $P > 0.05$) (Fig. 7b), and that of OC_{sed} against OC_{dead} also did not differ significantly between the sites ($F = 0.36$, d.f. = 1, $P > 0.05$) (Fig. 7d). We also found significant positive correlations between aboveground and belowground biomass ($F_{1,6} = 78.40$, $P < 0.001$, $r^2 = 0.93$).

4 Discussion

4.1 Components of OC stock in seagrass meadows

Our results showed that the sedimentary OC mass (OC_{sed}) was the main component of the total organic carbon mass (OC_{total} ; i.e., all stock components: live and dead aboveground and belowground biomass and sediments) at our study sites. The averaged OC_{bio} was significantly higher in this study than that in the previous study by Fourqurean et al. (2012) ($W = 1691$, $P = 0.006$), whereas the averaged OC_{sed} was significantly lower in this study than in the previous study at both vegetated and no-vegetation points (vegetation, $W = 6952$, $P < 0.001$; no-vegetation, $W = 225$, $P = 0.036$) (Table 3). Hence, the contribution of OC_{bio} to OC_{total} at our sites was higher than the global average. The high OC_{bio} was due to the well-developed belowground biomass, which accounted for $90.8 \pm 3.9\%$ of DW-based biomass at our sites. This value is also among the highest among globally compiled data (Duarte and Chiscano, 1999). Possible reasons for the exceptional development of belowground biomass include (1) morphological plasticity for re-

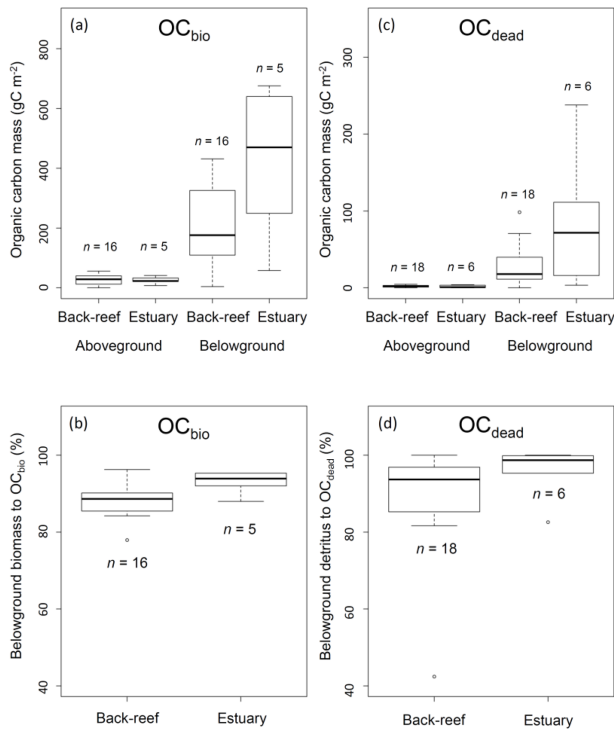


Figure 5. (a) OC_{bio} (sum of aboveground and belowground biomass) ($g C m^{-2}$); (b) contribution of belowground biomass to OC_{bio} (%); (c) OC_{dead} (sum of aboveground and belowground detritus) ($g C m^{-2}$); and (d) contribution of belowground detritus to OC_{dead} (%). Boxes show the 25 and 75 % quantiles; horizontal bands inside the box are median values; whiskers show maximum and minimum values; and open circles show outliers. (a) and (b) show the data of vegetated sampling points and (c) and (d) show the data of vegetated and bare sampling points.

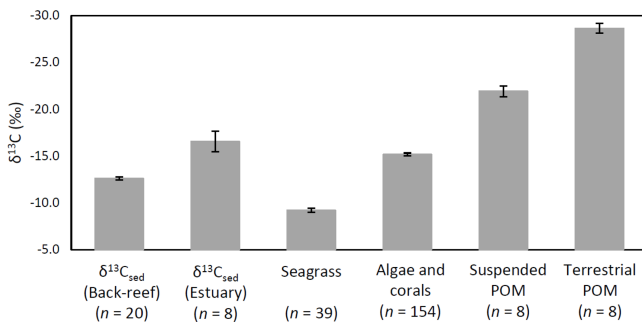


Figure 6. $\delta^{13}C_{sed}$ at each site and the $\delta^{13}C$ values of potential sources of OC of $\delta^{13}C_{sed}$ (means \pm SE).

sistance to high wave energy (Fonseca and Bell, 1998), which is supported by the low mud content at our sites compared to that reported by previous studies (Koch, 2001; Serrano et al., 2016a), and (2) nutrient limitation, which can lead to more allocation of biomass to belowground parts to enable the plant to acquire nutrients in deeper sediment layers (Lee et al., 2007). The low OC_{sed} may be attributable to (1) high

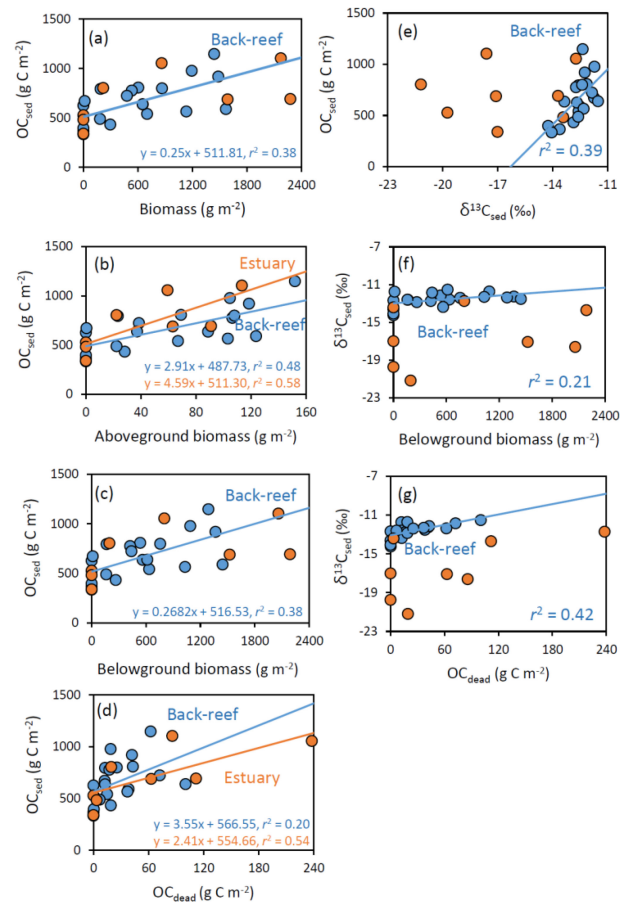


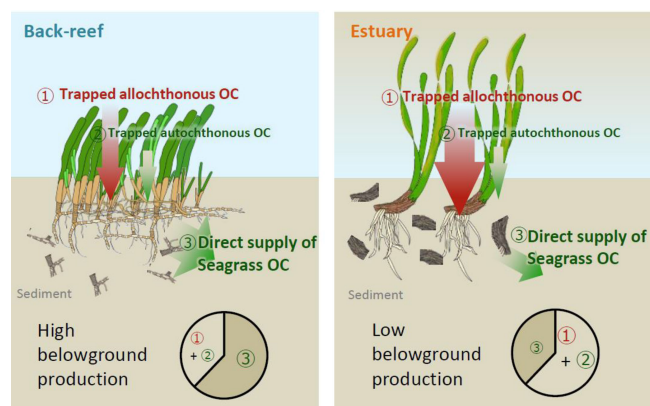
Figure 7. Relationships at the back-reef (blue) and estuarine (orange) sites between OC_{sed} and (a) biomass ($g m^{-2}$), (b) aboveground biomass ($g m^{-2}$), (c) belowground biomass ($g m^{-2}$), and (d) OC_{dead} ($g C m^{-2}$), and between (e) OC_{sed} and $\delta^{13}C_{sed}$, (f) $\delta^{13}C_{sed}$ and aboveground biomass, and (g) $\delta^{13}C_{sed}$ and OC_{dead} .

wave energy in association with increased OC lability due to the low specific surface area of sediments (Miyajima et al., 2017) and (2) the low gross primary production/respiration (P/R) ratio in this geographical region (Duarte et al., 2010).

Belowground detritus (i.e., sheath and rhizome, and root) was the major component of OC_{dead} , accounting for $90.8 \pm 12.0\%$ of OC_{dead} at our sites. This result is consistent with a previous report on *Cymodocea nodosa* (Cebrian et al., 2000) and suggests that belowground detritus is more easily stored in the sediment than aboveground detritus. A mechanism supporting this hypothesis might be either (1) a higher belowground biomass and an associated higher supply of seagrass detritus or (2) higher recalcitrance of belowground detritus. Here, a higher supply is more likely because at our sites the belowground biomass is among the highest reported values for each species (Duarte and Chiscano, 1999), although the reported aboveground/belowground production ratio of *T. hemprichii* and *E. acoroides* varies among studies (Duarte et al., 1998; Duarte and Chiscano, 1999; Erfteimeijer

Table 3. Values of seagrass biomass organic carbon and sedimentary organic carbon mass in globally compiled data (Fourqurean et al., 2012) and this study (mean \pm SD, n).

	Vegetated		No-vegetation	
	Seagrass biomass OC (g C m ⁻²) mean \pm SD (n)	Sedimentary OC (g C L ⁻¹) mean \pm SD (n)	Seagrass biomass OC (g C m ⁻²) mean \pm SD (n)	Sedimentary OC (g C L ⁻¹) mean \pm SD (n)
Fourqurean et al. (2012)	251.4 \pm 395.6 (251)	12.32 \pm 8.04 (410)	–	8.08 \pm 5.90 (43)
This study	283.0 \pm 200.8 (21)	5.03 \pm 1.32 (21)	–	2.93 \pm 0.73 (7)

**Figure 8.** Proposed mechanisms of OC accumulation at our study sites. At the back-reef site dominated by *Thalassia hemprichii*, direct supply of recalcitrant belowground seagrass detritus is a major pathway of OC_{sed} accumulation. At the estuarine site dominated by *Enhalus acoroides*, trapping of suspended autochthonous and allochthonous OC is the major pathway of OC accumulation. A difference in the turnover rate of belowground biomass likely caused the major mechanism of OC accumulation to differ between the sites.

et al., 1993). Higher recalcitrance is also possible; Holmer and Olsen (2002) reported that during a 43-day decomposition experiment, *E. acoroides* rhizomes did not lose weight, whereas buried leaves lost $80.3 \pm 4.2\%$ of their weight. Also, Fourqurean and Schrlau (2003) showed that only $5 \pm 2\%$ of *Thalassia testudinum* leaves, but $49 \pm 6\%$ of *T. testudinum* rhizomes, remained after 348 days of decomposition.

4.2 Mechanism of the OC supply to sediment

OC_{sed} was significantly and positively correlated with aboveground biomass at both sites (Fig. 7b) and with belowground biomass at the back-reef site (Fig. 7c). This result is contrary to the finding of most previous studies that there is no relationship between biomass and %OC or OC mass (Kennedy et al., 2004, 2010; Howard et al., 2018; Rozaimi et al., 2017; but cf. Samper-Villarreal et al., 2016). This contrary result may be due to our data collection strategy of (1) sympatric sampling of all stock components (live and dead aboveground and belowground biomass and sediments)

in intact cores, and (2) selection of sampling points aiming at controlling for variables other than seagrass biomass (i.e., mud content, wave height, and the amount of allochthonous OC inputs were relatively homogenous among points), although we could not exclude the possibility that our sites may have specific sedimentary OC storage characteristics different from those of other Indo-Pacific seagrass meadows. Several mechanisms can plausibly explain the positive relationship between seagrass biomass and OC_{sed}, including (1) trapping of suspended OC (both allochthonous and autochthonous OC) by seagrass leaves, and (2) the direct supply of belowground seagrass-derived autochthonous OC. If it is assumed that the suspended OC settling on the sediment surface is spatially homogeneous in nature (quality) and that the contribution of trapped OC is larger than that of directly supplied OC, then $\delta^{13}\text{C}_{\text{sed}}$ should be constant regardless of the aboveground biomass and its associated trapping capacity. However, OC_{sed} was significantly and positively correlated with $\delta^{13}\text{C}_{\text{sed}}$ (Fig. 7e), and the average $\delta^{13}\text{C}$ of OC_{sed} was significantly higher than $\delta^{13}\text{C}$ values of allochthonous OC (algae and corals, suspended POM, and terrestrial POM) at the back-reef site (Fig. 6). Furthermore, OC_{sed} was positively correlated with OC_{dead} at both sites (Fig. 7d), and the main component of OC_{dead} was belowground detritus (Fig. 5d). Taken together, these results suggest that directly supplied seagrass-derived OC was mainly from the belowground detritus. The positive correlations between $\delta^{13}\text{C}_{\text{sed}}$ and belowground biomass (Fig. 7f) and between $\delta^{13}\text{C}_{\text{sed}}$ and OC_{dead} (Fig. 7g) at the back-reef site also support this mechanism. From these lines of evidence, we conclude that the direct supply of recalcitrant belowground seagrass detritus is a major mechanism of OC_{sed} accumulation at the back-reef site (Fig. 8). Although we inferred that a direct autochthonous OC supply from belowground biomass is the major mechanism of OC_{sed} accumulation, suspended allochthonous OC may also have been supplied from the water column at the back-reef site, as has been reported elsewhere (Kennedy et al., 2010), because the average $\delta^{13}\text{C}_{\text{sed}}$ at the back-reef site was significantly lower than $\delta^{13}\text{C}$ of seagrass (Fig. 6).

The seagrass-derived OC increase according to the development of the seagrass meadows at the back-reef site (Fig. 7a and e) suggests that seagrass meadows are autotrophic and the time since seagrass colonization is longer. This inference

is consistent with a previous report that net primary production (NPP) at the back-reef site is higher where the seagrass cover is high (cover 91.7 %; NPP 68.14 mmol C m⁻² d⁻¹) than where the seagrass cover is low (cover 55.1 %; NPP 34.20 mmol C m⁻² d⁻¹) (Nakamura and Nakamori, 2009). It is also possible that seagrass mortality increases with time since colonization, leading to an increase in dead plant structures (Cebrian et al., 2000).

At the estuarine site, OC_{sed} increased with increasing aboveground seagrass biomass (Fig. 7b), but it did not increase with increasing belowground seagrass biomass (Fig. 7c), indicating that trapping of suspended OC by seagrass leaves surpassed the direct supply of belowground seagrass-derived OC (Fig. 8). However, OC_{dead} was significantly and positively correlated with OC_{sed} (Fig. 7d), indicating that direct supply also contributed to OC_{sed} accumulation at the site. A plausible mechanism explaining the hypothesized dominance of suspended OC trapping is a lower belowground turnover rate (i.e., the production / biomass ratio) at the estuarine site than at the back-reef site. Because OC_{sed} was not significantly different between the sites and directly supplied seagrass-derived OC was the major component of OC_{sed} at the back-reef site and only a minor component at the estuarine site, the capacity of the estuarine site to directly supply belowground seagrass-derived OC to the sediment was lower than that of the back-reef site (Fig. 8). Moreover, given that the directly supplied amount is determined by two factors, the belowground biomass and its turnover rate, and that the belowground biomass was not significantly different between the sites (Fig. 5a), we anticipate that a difference in the belowground turnover rate was responsible for the difference in the direct supply contribution between the sites. Another possible explanation for the inferred difference is that the absolute input of allochthonous OC was higher at the estuarine site than at the back-reef site. The slope of the regression between aboveground biomass and OC_{sed} was not significantly different between the sites (Fig. 7b), which suggests that the trapping ability for autochthonous and allochthonous OC was not different between the sites. However, the fact that OC_{sed} at vegetated points was not significantly different between the sites (Fig. 4b and d) together with the apparently minor direct belowground supply at the estuarine site implies that the contribution of OC from the water column to OC_{sed} was larger at the estuarine site. Moreover, the fact that average $\delta^{13}\text{C}_{\text{sed}}$ was significantly lower at the estuarine site than at the back-reef site (Fig. 6) would support a major role of allochthonous OC from the water column in OC_{sed} accumulation. The effect of particle trapping by seagrasses is reported to be enhanced particularly in particle-poor waters (Duarte et al., 1999). Thus, trapping is likely to be an important mechanism especially at sites with particle-poor water such as coral reef sites.

5 Conclusion

Using our data collection strategy, namely, sympatric sampling in intact cores of live and dead seagrasses and sediments and analyses of the organic carbon mass and stable carbon isotope composition of all components of the cores, we successfully demonstrated the pathways of sedimentary OC accumulation in seagrass meadows and showed that the contributions of both a direct supply of seagrass-derived OC by belowground production and particle trapping are important, although the latter is generally assumed as the main mechanism of OC accumulation in seagrass meadows compared with the bare sediment sites. Our results indicate that it is critical to consider both belowground and aboveground biomass productivity in addition to the morphological complexity of seagrass meadows as factors controlling OC, and that identifying the mechanism of accumulation is important for improving OC stock estimation and reducing the uncertainty in global blue carbon estimates.

Data availability. All raw data can be accessed at <https://doi.org/10.5281/zenodo.1299640> (Tanaya, 2018).

Author contributions. TT, HK, and TK conceived the idea; TT, KW, and TK designed the methodology; TT, KW, SY, and CH collected the samples and data; TT and KW performed sample analyses; TT and TK led the writing of the manuscript. All authors contributed critically to the drafts and gave final approval for publication.

Competing interests. The authors declare that they have no conflict of interest.

Acknowledgements. We thank Ryuji Tada for helpful comments; Atsushi Watanabe, Hiroyuki Takamiyagi, and Eizo Shimabukuro for the field sampling; Kiori Sakihara and Ayami Okuno for chemical analyses; Shigenori Ogihara, Takashi Muranaka, and Nobuhiro Koh for sample preparation; and Satoshi Kaku for developing the box corer. This study was partly supported by a Grant-in-Aid for Challenging Exploratory Research (no. 26630251) from the Japan Society for the Promotion of Science (JSPS), and by the Strategic R&D Area Project (S-14) of the Environmental Research and Technology Development Fund of the Ministry of the Environment, Japan.

Edited by: Steven Bouillon

Reviewed by: two anonymous referees

References

- Agawin, N. S. and Duarte, C. M.: Evidence of direct particle trapping by a tropical seagrass meadow, *Estuaries*, 25, 1205–1209, <https://doi.org/10.1007/BF02692217>, 2002.
- Barron, C., Marba, N., Terrados, J., Kennedy, H., and Duarte, C. M.: Community metabolism and carbon budget along a gradient of seagrass (*Cymodocea nodosa*) colonization, *Limnol. Oceanogr.*, 49, 1642–1651, <https://doi.org/10.4319/lo.2004.49.5.1642>, 2004.
- Borum, J., Sand-Jensen, K., Binzer, T., Pedersen, O., and Greve, T. M.: Oxygen movement in seagrasses, in: *Seagrasses: biology, ecology and conservation*, edited by: Larkum, A. W. D., Orth, R. J., and Duarte, C. M., Springer, Dordrecht, 255–270, 2006.
- Cebrian, J., Pedersen, M. F., Kroeger, K. D., and Valiela, I.: Fate of production of the seagrass *Cymodocea nodosa* in different stages of meadow formation, *Mar. Ecol.-Prog. Ser.*, 204, 119–130, <https://doi.org/10.3354/meps204119>, 2000.
- Dahl, M., Deyanova, D., Lyimo, L. D., Näslund, J., Samuelsson, G. S., Mtolera, M. S. P., Björk, M., and Gullström, M.: Effects of shading and simulated grazing on carbon sequestration in a tropical seagrass meadow, *J. Ecol.*, 104, 654–664, <https://doi.org/10.1111/1365-2745.12564>, 2016.
- Duarte, C. M. and Chiscano, C. L.: Seagrass biomass and production: a reassessment, *Aquat. Bot.*, 65, 159–174, [https://doi.org/10.1016/S0304-3770\(99\)00038-8](https://doi.org/10.1016/S0304-3770(99)00038-8), 1999.
- Duarte, C. M., Merino, M., Agawin, N. S., Uri, J., Fortes, M. D., Gallegos, M. E., Marbà, N., and Hemminga, M. A.: Root production and belowground seagrass biomass, *Mar. Ecol.-Prog. Ser.*, 171, 97–108, <https://doi.org/10.3354/meps171097>, 1998.
- Duarte, C. M., Benavent, E., and del Carmen Sanchez, M.: The microcosm of particles within seagrass *Posidonia oceanica* canopies, *Mar. Ecol.-Prog. Ser.*, 181, 289–295, <https://doi.org/10.3354/meps181289>, 1999.
- Duarte, C. M., Marbà, N., Gacia, E., Fourqurean, J. W., Beggins, J., Barrón, C., and Apostolaki, E. T.: Seagrass community metabolism: Assessing the carbon sink capacity of seagrass meadows, *Global Biogeochem. Cy.*, 24, GB4032, <https://doi.org/10.1029/2010GB003793>, 2010.
- Duarte, C. M., Kennedy, H., Marba, N., and Hendriks, I.: Assessing the capacity of seagrass meadows for carbon burial: current limitations and future strategies, *Ocean. Coast. Manage.*, 83, 32–38, <https://doi.org/10.1016/j.ocecoaman.2011.09.001>, 2013.
- Erfemeijer, P. L., Osinga, R., and Mars, A. E.: Primary production of seagrass beds in South Sulawesi (Indonesia): a comparison of habitats, methods and species, *Aquat. Bot.*, 46, 67–90, [https://doi.org/10.1016/0304-3770\(93\)90065-5](https://doi.org/10.1016/0304-3770(93)90065-5), 1993.
- Fonseca, M. S. and Bell, S. S.: Influence of physical setting on seagrass landscapes near Beaufort, North Carolina, USA, *Mar. Ecol.-Prog. Ser.*, 171, 109–121, <https://doi.org/10.3354/meps171109>, 1998.
- Fourqurean, J. W. and Schrlau, J. E.: Changes in nutrient content and stable ratios of C and N during decomposition of seagrasses and mangrove leaves along a nutrient availability gradient in Florida bay, USA, *Chem. Ecol.*, 19, 373–390, <https://doi.org/10.1080/02757540310001609370>, 2003.
- Fourqurean, J. W., Duarte, C. M., Kennedy, H., Marbà, N., Holmer, M., Mateo, M. A., Apostolaki, E. T., Kendrick, G. A., Krause-Jensen, D., McGlathery, K. J., and Serrano, O.: Seagrass ecosystems as a globally significant carbon stock, *Nat. Geosci.*, 5, 505–509, <https://doi.org/10.1038/ngeo1477>, 2012.
- Gacia, E. and Duarte, C. M.: Sediment retention by a Mediterranean *Posidonia oceanica* meadow: the balance between deposition and resuspension, *Estuar. Coast. Shelf S.*, 52, 505–514, <https://doi.org/10.1006/ecss.2000.0753>, 2001.
- Gacia, E., Granata T. C., and Duarte, C. M.: An approach to measurement of particle flux and sediment retention within seagrass (*Posidonia oceanica*) meadows, *Aquat. Bot.*, 65, 255–268, [https://doi.org/10.1016/S0304-3770\(99\)00044-3](https://doi.org/10.1016/S0304-3770(99)00044-3), 1999.
- Gacia, E., Duarte, C. M., Marba, N., Terrados, J., Kennedy, H., Fortes, M. D., and Tri, N. H.: Sediment deposition and production in SE-Asia seagrass meadows, *Estuar. Coast. Shelf S.*, 56, 909–919, [https://doi.org/10.1016/S0272-7714\(02\)00286-X](https://doi.org/10.1016/S0272-7714(02)00286-X), 2003.
- Green, E. P. and Short, F. T. (Eds.): *World atlas of seagrasses*, University of California Press, Berkeley, 2003.
- Hemminga, M. A., Slim, F. J., Kazungu, J., Ganssen, G. M., Nieuwenhuize, J., and Kruyt, N. M.: Carbon outwelling from a mangrove forest with adjacent seagrass beds and coral reefs (Gazi Bay, Kenya), *Mar. Ecol.-Prog. Ser.*, 106, 291–301, <https://doi.org/10.3354/meps106291>, 1994.
- Hendriks, I. E., Sintes, T., Bouma, T. J., and Duarte, C. M.: Experimental assessment and modeling evaluation of the effects of the seagrass *Posidonia oceanica* on flow and particle trapping, *Mar. Ecol.-Prog. Ser.*, 356, 163–173, <https://doi.org/10.3354/meps07316>, 2008.
- Holmer, M. and Olsen, A. B.: Role of decomposition of mangrove and seagrass detritus in sediment carbon and nitrogen cycling in a tropical mangrove forest, *Mar. Ecol.-Prog. Ser.*, 230, 87–101, <https://doi.org/10.3354/meps230087>, 2002.
- Howard, J. L., Creed, J. C., Aguiar, M. V. P., and Fouqurean, J. W.: CO₂ released by carbonate sediment production in some coastal areas may offset the benefits of seagrass “Blue Carbon” storage, *Limnol. Oceanogr.*, 63, 160–172, <https://doi.org/10.1002/lno.10621>, 2018.
- Ingalls, A. E., Lee, C., and Druffel, E. R.: Preservation of organic matter in mound-forming coral skeletons, *Geochim. Cosmochim. Ac.*, 67, 2827–2841, [https://doi.org/10.1016/S0016-7037\(03\)00079-6](https://doi.org/10.1016/S0016-7037(03)00079-6), 2003.
- Kennedy, H., Gacia, E., Kennedy, D. P., Papadimitriou, S., and Duarte, C. M.: Organic carbon sources to SE Asian coastal sediments, *Estuar. Coast. Shelf S.*, 60, 59–68, <https://doi.org/10.1016/j.ecss.2003.11.019>, 2004.
- Kennedy, H., Beggins, J., Duarte, C. M., Fourqurean, J. W., Holmer, M., Marbà, N., and Middelburg, J. J.: Seagrass sediments as a global carbon sink: isotopic constraints, *Global Biogeochem. Cy.*, 24, GB4026, <https://doi.org/10.1029/2010GB003848>, 2010.
- Kirkman, H.: *Seagrasses of Australia. State of the Environment Technical Paper Series (Estuaries and the Sea)*, Department of the Environment, Canberra, 1997.
- Koch, E. W.: Beyond light: physical, geological, and geochemical parameters as possible submersed aquatic vegetation habitat requirements, *Estuaries*, 24, 1–17, <https://doi.org/10.2307/1352808>, 2001.
- Kuwa, T., Beninger, P. G., Decottignies, P., Mathot, K. J., Lund, D. R., and Elner, R. W.: Biofilm grazing in a higher vertebrate: the western sandpiper, *Calidris mauri*, *Ecology*, 89, 599–606, <https://doi.org/10.1890/07-1442.1>, 2008.

- Lavery, P. S., Mateo, M.-A., Serrano, O., and Rozaimi, M.: Variability in the Carbon Storage of Seagrass Habitats and Its Implications for Global Estimates of Blue Carbon Ecosystem Service, *PLOS ONE*, 8, e73748, <https://doi.org/10.1371/journal.pone.0073748>, 2013.
- Lee, K. S., Park, S. R., and Kim, Y. K.: Effects of irradiance, temperature, and nutrients on growth dynamics of seagrasses: a review, *J. Exp. Mar. Biol. Ecol.*, 350, 144–175, <https://doi.org/10.1016/j.jembe.2007.06.016>, 2007.
- McLeod, E., Chmura, G. L., Bouillon, S., Salm, R., Björk, M., Duarte, C. M., Lovelock, C. E., Schlesinger, W. H., and Siliman, B. R.: A blueprint for blue carbon: toward an improved understanding of the role of vegetated coastal habitats in sequestering CO₂, *Front. Ecol. Environ.*, 9, 552–560, <https://doi.org/10.1890/110004>, 2011.
- Mitsumoto, H., Omija, T., and Kobayashi, R.: Water pollution caused by soil run-off and the coral reef situation in Shiraho, Ishigaki Island 2, Annual Report of Okinawa Prefectural Institute of Health and Environment, 34, 121–124, 2000 (in Japanese).
- Miyajima, T., Koike, I., Yamano, H., and Iizumi, H.: Accumulation and transport of seagrass-derived organic matter in reef flat sediment of Green Island, Great Barrier Reef, *Mar. Ecol.-Prog. Ser.*, 175, 251–259, <https://doi.org/10.3354/meps175251>, 1998.
- Miyajima, T., Hori, M., Hamaguchi, M., Shimabukuro, H., Adachi, H., Yamano, H., and Nakaoka, M.: Geographic variability in organic carbon stock and accumulation rate in sediments of East and Southeast Asian seagrass meadows, *Global Biogeochem. Cy.*, 29, 397–415, <https://doi.org/10.1002/2014GB004979>, 2015.
- Miyajima, T., Hori, M., Hamaguchi, M., Shimabukuro, H., and Yoshida, G.: Geophysical constraints for organic carbon sequestration capacity of *Zostera marina* seagrass meadows and surrounding habitats, *Limnol. Oceanogr.*, 62, 954–972, <https://doi.org/10.1002/lno.10478>, 2017.
- Nakamura, T. and Nakamori, T.: Estimation of photosynthesis and calcification rates at a fringing reef by accounting for diurnal variations and the zonation of coral reef communities on reef flat and slope: a case study for the back reef site, Ishigaki Island, southwest Japan, *Coral Reefs*, 28, 229–250, <https://doi.org/10.1007/s00338-008-0454-8>, 2009.
- Nellemann, C., Corcoran, E., Duarte, C. M., Valdés, L., De Young, C., Fonseca, L., and Grimsditch, G.: Blue Carbon. The Role of Healthy Oceans in Binding Carbon. A Rapid Response Assessment 78, United Nations Environment Programme, GRID-Arendal, 2009.
- Pendleton, L., Donato, D. C., Murray, B. C., Crooks, S., Jenkins, W. A., Sifleet, S., Craft, C., Fourqurean, J. W., Kauffman, J. B., Marbà, N., Megonigal, P., Pidgeon, E., Herr, D., Gordon, D., and Baldera, A.: Estimating global “blue carbon” emissions from conversion and degradation of vegetated coastal ecosystems, *PLOS ONE*, 7, e43542, <https://doi.org/10.1371/journal.pone.0043542>, 2012.
- Ricart, A. M., York, P. H., Rasheed, M. A., Pérez, M., Romero, J., Bryant, C. V., and Macreadie, P. I.: Variability of sedimentary organic carbon in patchy seagrass landscapes, *Mar. Pollut. Bull.*, 100, 476–482, <https://doi.org/10.1016/j.marpolbul.2015.09.032>, 2015.
- Rozaimi, M., Fairouz, M., Hakimi, T. M., Hamdan, N. H., Omar, R., Ali, M. M., and Tahirin, S. A.: Carbon stores from a tropical seagrass meadow in the midst of anthropogenic disturbance, *Mar. Pollut. Bull.*, 119, 253–260, <https://doi.org/10.1016/j.marpolbul.2017.03.073>, 2017.
- Samper-Villarreal, J., Lovelock, C. E., Saunders, M. I., Roelfsema, C., and Mumby, P. J.: Organic carbon in seagrass sediments is influenced by seagrass canopy complexity, turbidity, wave height, and water depth, *Limnol. Oceanogr.*, 61, 938–952, <https://doi.org/10.1002/lno.10262>, 2016.
- Serrano, O., Lavery, P. S., Rozaimi, M., and Mateo, M. Á.: Influence of water depth on the carbon sequestration capacity of seagrasses, *Global Biogeochem. Cy.*, 28, 950–961, <https://doi.org/10.1002/2014GB004872>, 2014.
- Serrano, O., Lavery, P. S., Duarte, C. M., Kendrick, G. A., York, P. H., and Macreadie, P. I.: Can mud (silt and clay) concentration be used to predict soil organic carbon content within seagrass ecosystems?, *Biogeosciences*, 13, 4915–4926, <https://doi.org/10.5194/bg-13-4915-2016>, 2016a.
- Serrano, O., Ricart, A. M., Lavery, P. S., Mateo, M. A., Arias-Ortiz, A., Masque, P., Rozaimi, M., Steven, A., and Duarte, C. M.: Key biogeochemical factors affecting soil carbon storage in *Posidonia* meadows, *Biogeosciences*, 13, 4581–4594, <https://doi.org/10.5194/bg-13-4581-2016>, 2016b.
- Short, F., Carruthers, T., Dennison, W., and Waycott, M.: Global seagrass distribution and diversity: a bioregional model, *J. Exp. Mar. Biol. Ecol.*, 350, 3–20, <https://doi.org/10.1016/j.jembe.2007.06.012>, 2007.
- Suzuki, R.: Sediment production by *Echinometra mathaei* in the shallow littoral zone of coral reefs, the Ishigaki island, Ryukyus, Japan, *J. Geogr.*, 114, 41–57, <https://doi.org/10.5026/jgeography.114.41>, 2005.
- Tamura, H., Nadaoka, K., and Paringit, E. C.: Hydrodynamic characteristics of a fringing coral reef on the east coast of Ishigaki Island, southwest Japan, *Coral Reefs*, 26, 17–34, <https://doi.org/10.1007/s00338-006-0164-z>, 2007.
- Tanaka, Y. and Kayanne, H.: Relationship of species composition of tropical seagrass meadows to multiple physical environmental factors, *Ecol. Res.*, 22, 87–96, <https://doi.org/10.1007/s11284-006-0189-3>, 2007.
- Tanaya, T.: Contributions of the direct supply of belowground seagrass detritus and trapping of suspended organic matter to the sedimentary organic carbon stock in seagrass meadows, <https://doi.org/10.5281/zenodo.1299640>, 2018.
- Terada, K., Koibuchi, Y., and Isobe, M.: Material flux in mangrove forest based on the field observation, *Proceedings of Coastal Engineering, Japan Society of Civil Engineers*, 54, 1056–1060, <https://doi.org/10.2208/proce1989.54.1056>, 2007 (in Japanese).
- Trevathan-Tackett, S. M., Macreadie, P. I., Sanderman, J., Baldock, J., Howes, J. M., and Ralph, P. J.: A global assessment of the chemical recalcitrance of seagrass tissues: implications for long-term carbon sequestration, *Front. Planet. Sci.*, 8, 925, <https://doi.org/10.3389/fpls.2017.00925>, 2017.
- Versteegh, E. A. A., Gillikin, D. P., and Dehairs, F.: Analysis of $\delta^{15}\text{N}$ values in mollusk shell organic matrix by elemental analysis/isotope ratio mass spectrometry without acidification: an evaluation and effects of long-term preservation, *Rapid Commun. Mass Sp.*, 25, 675–680, <https://doi.org/10.1002/rcm.4905>, 2011.
- Watanabe, K. and Kuwae, T.: How organic carbon derived from multiple sources contributes to carbon sequestration processes in

a shallow coastal system?, *Glob. Change Biol.*, 21, 2612–2623, <https://doi.org/10.1111/gcb.12924>, 2015.

Yamamuro, M. and Kayanne, H.: Rapid direct determination of organic carbon and nitrogen in carbonate-bearing sediments with a Yanaco MT-5 CHN analyzer, *Limnol. Oceanogr.*, 40, 1001–1005, <https://doi.org/10.4319/lo.1995.40.5.1001>, 1995.