

## Case report

DOI: 10.3345/kjp.2010.53.6.722  
Korean J Pediatr 2010;53(6):722-726



# A case report of chronic granulomatous disease presenting with aspergillus pneumonia in a 2-month old girl

Eun Lee, M.D.<sup>1</sup>, Seak Hee Oh, M.D.<sup>1</sup>, Ji Won Kwon, M.D.<sup>1,2</sup>, Byoung Ju Kim, M.D.<sup>1,2</sup>, Jinho Yu, M.D.<sup>1,2</sup>, Chan Jeoung Park, M.D.<sup>3</sup> and Soo Jong Hong, M.D.<sup>1,2</sup>

Department of Pediatrics<sup>1</sup>, Childhood Asthma Atopy Center<sup>2</sup>, Department of Laboratory Medicine<sup>3</sup>, Asan Medical Center Children's Hospital, University of Ulsan College of Medicine, Seoul, Korea

Received: 27 October 2009, Revised: 24 November 2009

Accepted: 1 December 2009

Corresponding Author: Soo Jong Hong, M.D.

Department of Pediatrics, Childhood Asthma Atopy Center, Asan Medical Center Children's Hospital, University of Ulsan College of Medicine, 388-1 Pungnap-dong, Songpa-gu, Seoul 138-736, Korea

Tel: +82.2-3010-3379, Fax: +82.2-473-3725

E-mail: sjhong@amc.seoul.kr

Copyright © 2010 by The Korean Pediatric Society

Chronic granulomatous disease (CGD) is an uncommon inherited disorder caused by mutations in any of the genes encoding subunits of the superoxide-generating phagocyte NADPH oxidase system, which is essential for killing catalase producing bacteria and fungi, such as *Aspergillus* species, *Staphylococcus aureus*, *Serratia marcescens*, *Nocardia* species and *Burkholderia cepacia*. In case of a history of recurrent or persistent infections, immune deficiency should be investigated. Particularly, in the case of uncommon infections such as aspergillosis in early life, CGD should be considered. We describe here a case of CGD that presented with invasive pulmonary aspergillosis in a 2-month-old girl. We confirmed pulmonary aspergillosis noninvasively through a positive result from the culture of bronchial alveolar lavage fluid, positive serological test for *Aspergillus* antigen and radiology results. She was successfully treated with Amphotericin B and recombinant IFN- $\gamma$  initially. Six weeks later after discharge, she was readmitted for pneumonia. Since there were infiltrates on the right lower lung, which were considered as residual lesions, voriconazole therapy was initiated. She showed a favorable response to the treatment and follow-up CT showed regression of the pulmonary infiltrates.

**Key words:** Chronic granulomatous disease, Aspergillosis, Pneumonia, BAL culture, Amphotericin B, Voriconazole, Infant

This is an open-access article distributed under the terms of the Creative Commons Attribution Non-Commercial License (<http://creativecommons.org/licenses/by-nc/3.0/>) which permits unrestricted non-commercial use, distribution, and reproduction in any medium, provided the original work is properly cited.

## Introduction

Chronic granulomatous disease (CGD) is a group of rare X-linked or autosomal recessive genetic disorders of the phagocytic NADPH oxidase system causing recurrent bacterial and fungal infections with excessive inflammation and granuloma formation<sup>1, 2</sup>. Granuloma formation is considered to occur secondary to the

failure of phagocytes in killing bacteria and due to undigested intracellular bacterial debris<sup>3</sup>.

CGD is normally diagnosed in infancy and has an incidence of 1 in 200,000-250,000 live births<sup>4, 5</sup>. Most patients manifest symptoms and signs of recurrent and persistent infections during the first 2 years of life. The disorder is much more common in males than in females, with 86% of patients in the USA national

registry being male<sup>5</sup>). It has a mortality of approximately 2% per year, with a predicted life expectancy of around 25-30 years.

In this article, we describe an unusual case of *aspergillus fumigatus* pneumonia in a 2-month-old girl with CGD who showed a favorable response to treatment with amphotericin B and recombinant IFN- $\gamma$  (r IFN- $\gamma$ ).

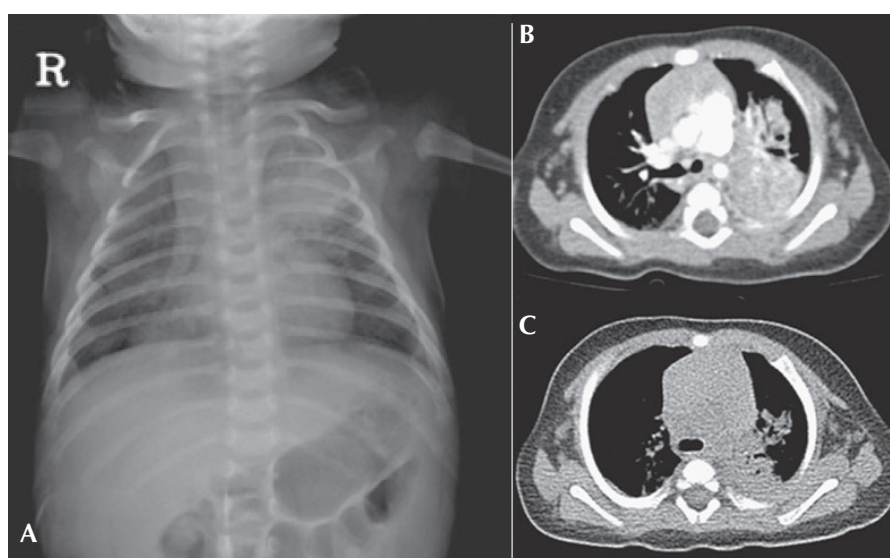
### Case report

A 2 months old girl, born at a gestational age of 38+2 weeks was referred to us for investigations regarding persistent pneumonia. The girl suffered from several episodes of recurrent infections such as neonatal sepsis and gastroenteritis, since the 6<sup>th</sup> day of her life at the time of admission, she had received three recent course of antibiotics from the previous hospital including cefepime, clindamycin and imipenem due to persistent pneumonia. On admission, physical examination revealed mild chest retraction

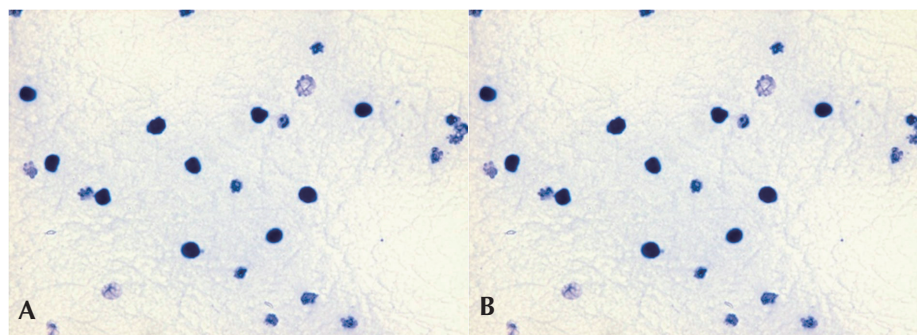
and rales in both lung fields. She was alert and responsive, with no neurological deficit. Her height and weight were at the 25<sup>th</sup>-50<sup>th</sup> percentile and the 50<sup>th</sup>-75<sup>th</sup> percentile for her age respectively.

A chest X-ray (Fig. 1) confirmed the presence of bilateral pulmonary consolidation and atelectasis. Diagnostic bronchoalveolar lavage (BAL) was performed to obtain specimens for cytology and culture. A computed tomography (CT) of the thorax showed a left sided consolidation and evidence of hematogenously disseminated multifocal pneumonia.

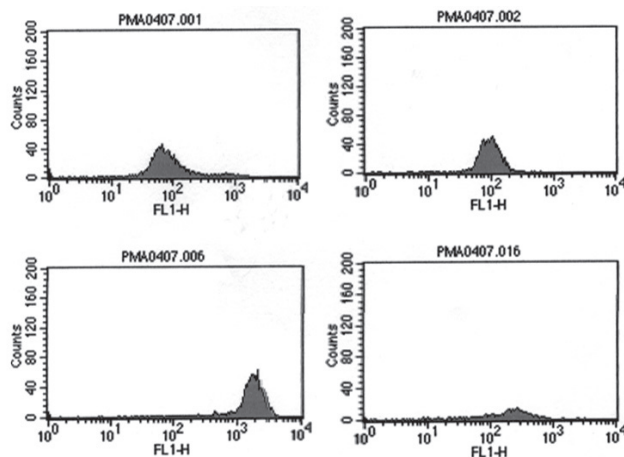
She had no family history related to primary immunodeficiency. Her total leucocyte count was 10,500/ $\mu$ L, with 34% neutrophils and 52% lymphocytes. The ESR was 12 mm/hr, and CRP 3.54 mg/dL. Aspartate aminotransferase (AST) and alanine aminotransferase (ALT) levels were raised (174 IU/L and 398 IU/L, respectively). Electrolyte levels and the results of renal function tests were normal. Investigations for her immunologic work-up showed Ig G, Ig A, Ig M, Ig E, C3, C4, and CH50 levels to be



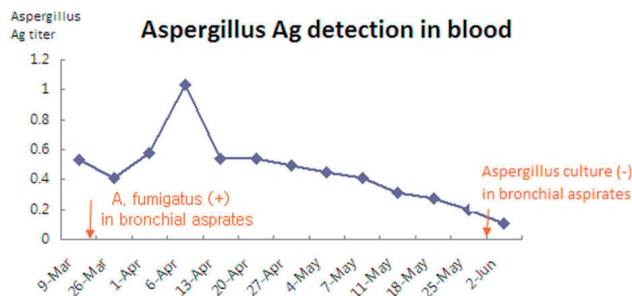
**Fig. 1.** Pulmonary infection in a 2-month-old patient with CGD who presented with *Aspergillus* pneumonia. Bilateral pneumonic infiltrates on X-ray **A**) and multifocal consolidations in the left lung field on CT scanning **B**) are observed. Follow-up CT scan obtained 4 weeks later shows a decrease volume of consolidation, especially on the left lower field **C**).



**Fig. 2.** The NBT test in the CGD patient and normal control. **A**) The negative NBT test in this CGD patient, **B**) A normal NBT test in a control.



**Fig. 3.** The result of the neutrophil burst activity test in the 2-month-old patient with CGD. In contrast to the control on the left side (A-1, A-2), there were defects with a right sided shift and a fluorescence peak of low intensity in this patient (B-1, B-2).



**Fig. 4.** The course of the Aspergillus antigen galactomannan titer in the serum during treatment with Amphotericin-B. The titer remained high during treatment with amphotericin B initially but started to decline 5 weeks after therapy.

within her age specific reference range. Lymphocyte subset analysis revealed normal B cells and T cells for her age. Diagnosis of CGD was confirmed by both abnormal neutrophil nitroblue tetrazolium (NBT) slide test (Fig. 2) and neutrophil respiratory burst activity test (Fig. 3 B-1, B-2). The detection of *Aspergillus* galactomannan antigenemia during onceweekly monitoring was performed to facilitate early diagnosis of invasive aspergillosis and to evaluate the response to the antifungal therapy (amphotericin B). The course of the Aspergillus antigen galactomannan titer in the serum during treatment is shown in Fig. 4. A genetic study for the mutation of the NCF1 (Neutrophil cytosol factor 1) gene encoding the p47<sup>phox</sup> the most common gene mutation in autosomal recessive CGD, was done, but the mutation was not found.

After a positive result from BAL culture and *Aspergillus* antigen detection, an antifungal agent was added to the treatment. Amphotericin B therapy was initiated at a dose of 0.25 mg/kg/d, followed by a daily dosage increases of 0.25 mg/kg/d until

a therapeutic dosage (1.0 mg/kg/d) was reached. However, the NBT dye reduction test revealed absolutely no reduction of dye by neutrophils therefore INF- $\gamma$  administered subcutaneously at a dose of 15  $\mu$ g three times weekly was added to the patient's regimen.

During the treatment for *Aspergillus* pneumonia, we found right-sided inguinal lymphadenopathy, at the previous central line insertion site, a subsequent culture yielded *Enterobacter aerogenes*. Perianal fissures had also occurred, and we therefore had the patient soak in a shallow tub of warm water (sitz bath). During the admission period, her AST and ALT levels rose significantly. We performed hepatitis serology and abdominal ultrasonography several times to identify the cause of the elevated liver enzymes. All tests produced normal results. We considered antibiotics-induced toxicity or the natural course of the disease as possible causes. We had added voriconazole to her regimen because of the residual lesions on the lung. However, during voriconazole administration, abnormal liver function values appeared, therefore we stopped voriconazole therapy.

At the time of discharge from our center, which was 3 months after admission, her acute phase inflammatory markers and Aspergillus precipitins had all progressively returned to normal. A chest radiograph and CT scan after a 3-month course of antifungal treatment with IFN- $\gamma$  showed complete resolution of the previous findings. BAL culture and a serological test were both negative. However, six weeks after the discharge, she was readmitted with fever due to recurrent pneumonia, considered as a previous remnant lesion. She was treated with voriconazole for 4 weeks and commenced on prophylactic antibiotics and antifungal agents. We are currently considering HLA-identical bone marrow transplantation (BMT) for this patient at the age of 1-year-old.

## Discussion

CGD is a primary immunodeficiency disorder characterized by defects in superoxide-generating systems of phagocytes leading to recurrent bacterial and fungal infections. Diagnosis of this disease requires a high index of suspicion along with prompt and aggressive treatment of infections. The presentation of this patient with recurrent, uncommon infections in early infancy pointed towards a primary immunodeficiency. The patterns of presentation differ from patient to patient in CGD. As shown in this case, the lung is the most common site of infection, manifested as pneumonia or pulmonary abscess. Alternatively, dermatitis, subcutaneous abscess, lymphadenitis, liver abscess or osteomyelitis may be the prominent clinical problem in CGD patients<sup>7</sup>.

The diagnosis of CGD is confirmed by the NBT dye reduction

test and the respiratory burst activity test. Normally the percentage of blue-stained neutrophils is close to 100, but in CGD patients, this percentage is close to 0. In this case, the neutrophil respiratory burst activity test showed a dual population in the mother of the patient, further her father's neutrophil respiratory burst activities were slightly decreased, which suggested an autosomal recessive inheritance pattern.

In CGD patients, neutrophils are able to phagocytose particles normally, but are unable to generate superoxide anions that are essential for microbial killing. The degree of superoxide anion production is determined partially according to the type of the inheritance pattern<sup>2</sup>. Therefore the functional and molecular diagnosis of CGD may be useful for predicting the prognosis and deciding the appropriate treatment. For example, there are several subtypes in gp91phox mutations, which are inherited in the pattern of X-linked form. In the X91<sup>0</sup>, which accounting for approximately 90% of the X-linked CGD cases, NADPH oxidase activity is totally abolished because of both the instability of the mRNA and protein. X91<sup>-</sup>, accounting for less than 10% cases among the X-linked mutations, is a type of promoter mutation that causes 3-9% of normal NADPH oxidase activity, resulting in later diagnosis and a milder clinical course than X91<sup>0</sup>. Autosomal recessive CGD, accounting for about 30-40% of all CGD cases is caused by the genetic defects in one of the p47phox, p67phox and p22phox.

The microorganisms responsible for the majority of infections in CGD are *S. aureus*, Gram-negative enteric bacilli (including *Serratia marcescens*, *Salmonella* species, and *Burkholderia cepacia*), and *Aspergillus* species. *Aspergillus fumigatus* infection as shown in this case, accounts for 15% of infections in CGD patients. It appears to occur because of the failure to clear hyphae by neutrophils' oxidant mechanisms. Further the defect in phagocytes' oxidant production is associated with a prolonged inflammatory response, causing granuloma formation<sup>3</sup>. The diagnosis of aspergillosis in CGD is difficult and important. In this case, we used noninvasive tests such as BAL culture and *Aspergillus* antigen detection without an invasive procedure such as lung tissue biopsy. Bronchoscopy with BAL is an established method for the diagnosis of pulmonary infections, especially in immunocompromised patients<sup>8</sup>. In a study, the diagnostic value sensitivity of bronchoscopy is 43% in the cases of histologically proven invasive pulmonary aspergillosis<sup>9</sup>. The *Aspergillus* galactomannan antigenemia assay may assist in the diagnosis of aspergillosis with a sensitivity of 81% and a specificity of 89%<sup>10</sup>.

Further, when amphotericin B is being used in therapy, falsenegative results may occur because the antifungal agent

suppresses the growth of hyphae<sup>9</sup>. We monitored the antigenemia during once-weekly and observed declining values, suggesting successful treatment.

The management of CGD patients includes avoidance of infection with prophylactic antibiotic therapy and aggressive treatment of acute infections and inflammatory complications. In a randomized, non-blinded trial comparing voriconazole versus amphotericin B in the treatment of invasive aspergillosis, successful outcomes were noted in 52.8% of the patients in the voriconazole group and 31.6% of those in the amphotericin B group<sup>11</sup>. In our case, therapy with voriconazole during the first admission period had to be discontinued because of liver toxicity. When voriconazole was administered during the second admission period, it proved very effective and was well tolerated.

IFN- $\gamma$  prophylaxis reduces the frequency of the serious infections by 70% by increasing the production of superoxides in CGD patients. Stem cell transplantation is curative in CGD<sup>9</sup>. Even in patients with active *Aspergillus* infection, human leukocyte antigen (HLA)-identical BMT or peripheral blood stem cell transplantation has been successfully performed with granulocyte-colony stimulating factor (G-CSF)-mobilized granulocyte transfusions<sup>10, 12</sup>. However in the absence of an HLA-identical family donor, BMT or peripheral blood stem cell transplantation is not recommended<sup>9</sup>. A therapeutic alternative for CGD patients with no HLA-identical donors is the genetic modification of autologous hematopoietic stem cells (HSC)<sup>13</sup>. Although CGD has been successfully corrected in animal models by gene transfer in HSCs, similar success have been achieved in humans with CGD. In this report, substantial gene transfer in CGD patients' neutrophils lead to a large number of functionally corrected phagocytes and notable clinical improvement<sup>13</sup>.

## References

- 1) Perfect JR, Savani DV, Durack DT. Uptake of itraconazole by alveolar macrophages. *Antimicrob Agents Chemother* 1993;37:903-4.
- 2) Stasia MJ, Li XJ. Genetics and immunopathology of chronic granulomatous disease. *Semin Immunopathol* 2008;30:209-35.
- 3) Levine S, Smith VV, Malone M, Sebire NJ. Histopathological features of chronic granulomatous disease (CGD) in childhood. *Histopathology* 2005;47:508-16.
- 4) Heyworth PG, Cross AR, Curnutte JT. Chronic granulomatous disease. *Curr Opin Immunol* 2003;15:578-84.
- 5) Winkelstein JA, Marino MC, Johnston RB, Jr., Boyle J, Curnutte J, Gallin JI, et al. Chronic granulomatous disease. Report on a national registry of 368 patients. *Medicine (Baltimore)* 2000;79:155-69.
- 6) Martire B, Rondelli R, Soresina A, Pignata C, Broccoletti T, Finocchi A, et al. Clinical features, long-term follow-up and outcome of a large cohort

- of patients with Chronic Granulomatous Disease: an Italian multicenter study. *Clin Immunol* 2008;126:155-64.
- 7) Lekstrom-Himes JA, Gallin JI. Immunodeficiency diseases caused by defects in phagocytes. *N Engl J Med* 2000;343:1703-14.
  - 8) Reichenberger F, Habicht J, Matt P, Frei R, Soler M, Bolliger CT, et al. Diagnostic yield of bronchoscopy in histologically proven invasive pulmonary aspergillosis. *Bone Marrow Transplant* 1999;24:1195-9.
  - 9) Biorai B, Toren A, Wolach B, Mandel M, Golan H, Neumann Y, et al. Successful treatment of invasive aspergillosis in chronic granulomatous disease by granulocyte transfusions followed by peripheral blood stem cell transplantation. *Bone Marrow Transplant* 2000;26:1025-8.
  - 10) Wheat LJ. Rapid diagnosis of invasive aspergillosis by antigen detection. *Transpl Infect Dis* 2003;5:158-66.
  - 11) Herbrecht R, Denning DW, Patterson TF, Bennett JE, Greene RE, Oestmann JW, et al. Voriconazole versus amphotericin B for primary therapy of invasive aspergillosis. *N Engl J Med* 2002;347:408-15.
  - 12) Ozsahin H, von Planta M, Muller I, Steinert HC, Nadal D, Lauener R, et al. Successful treatment of invasive aspergillosis in chronic granulomatous disease by bone marrow transplantation, granulocyte colony-stimulating factor-mobilized granulocytes, and liposomal amphotericin-B. *Blood* 1998;92:2719-24.
  - 13) Ott MG, Schmidt M, Schwarzwaelder K, Stein S, Siler U, Koehl U, et al. Correction of X-linked chronic granulomatous disease by gene therapy, augmented by insertional activation of MDS1-EVI1, PRDM16 or SETBP1. *Nat Med* 2006;12:401-9.