



RESEARCH ARTICLE

Osteogenic potential of gingival stromal progenitor cells cultured in platelet rich fibrin is predicted by core-binding factor subunit- α 1/Sox9 expression ratio (*in vitro*) [version 1; peer review: 1 approved, 2 approved with reservations]

Alexander Patera Nugraha ¹⁻³, Ida Bagus Narmada ², Diah Savitri Ernawati⁴, Aristika Dinaryanti³, Eryk Hendrianto³, Igo Syaiful Ihsan³, Wibi Riawan⁵, Fedik Abdul Rantam ^{3,6}

¹Graduate School of Immunology, Postgraduate School, Universitas Airlangga, Surabaya, 60132, Indonesia

²Orthodontic Department, Faculty of Dental Medicine, Universitas Airlangga, Surabaya, 60132, Indonesia

³Stem Cell Research and Development Center, Universitas Airlangga, Surabaya, 60132, Indonesia

⁴Oral Medicine Department, Faculty of Dental Medicine, Universitas Airlangga, Surabaya, 60132, Indonesia

⁵Biochemistry Biomolecular Laboratory, Faculty of Medicine, Universitas Brawijaya, Malang, 65145, Indonesia

⁶Virology and Immunology Laboratory, Microbiology Department, Faculty of Veterinary Medicine, Universitas Airlangga., Surabaya, 60132, Indonesia

V1 First published: 25 Jul 2018, 7:1134 (<https://doi.org/10.12688/f1000research.15423.1>)
 Latest published: 25 Jul 2018, 7:1134 (<https://doi.org/10.12688/f1000research.15423.1>)

Abstract

Background: Alveolar bone defect regeneration has long been problematic in the field of dentistry. Gingival stromal progenitor cells (GSPCs) offer a promising solution for alveolar bone regeneration. In order to optimally differentiate and proliferate progenitor cells, growth factors (GFs) are required. Platelet rich fibrin (PRF) has many GFs and can be easily manufactured. Core-binding factor subunit- α 1 (CBF- α 1) constitutes a well-known osteogenic differentiation transcription factor in SPCs. Sox9, as a chondrogenic transcription factor, interacts and inhibits CBF- α 1, but its precise role in direct *in vitro* osteogenesis remains unknown. GSPCs cultured *in vitro* in PRF to optimally stimulate osteogenic differentiation has been largely overlooked. The aim of this study was to analyze GSPCs cultured in PRF osteogenic differentiation predicted by CBF- α 1/Sox9.

Methods: This study used a true experimental with post-test only control group design and random sampling. GPSCs isolated from the lower gingiva of four healthy, 250-gram, 1-month old, male Wistar rats (*Rattus Novergicus*) were cultured for two weeks, passaged every 4-5 days. GSPCs in passage 3-5 were cultured in five M24 plates (N=108; n=6/group) for Day 7, Day 14, and Day 21 in three different mediums (control negative group: α Modified Eagle Medium; control positive group: High Glucose-Dulbecco's Modified Eagle Medium (DMEM-HG) + osteogenic medium; Treatment group: DMEM-HG + osteogenic medium + PRF). CBF- α 1 and Sox9 were examined with ICC monoclonal antibody. A one-way ANOVA continued with Tukey HSD test ($p < 0.05$) based on

Open Peer Review

Reviewer Status ? ?

	Invited Reviewers		
	1	2	3
version 1 25 Jul 2018	report	report	report

- 1 **Guang Hong**, Tohoku University, Sendai, Japan
- 2 **Ananto Ali Alhasyimi** , Gadjah Mada University (UGM), Yogyakarta, Indonesia
- 3 **Benny M. Soegiharto** , University of Indonesia, Jakarta, Indonesia

Any reports and responses or comments on the article can be found at the end of the article.

Kolmogorov–Smirnov and Levene's tests ($p>0.05$) was performed.

Results: The treatment group showed the highest CBF- α 1/Sox9 ratio ($16.00\pm 3.000/14.33\pm 2.517$) on Day 7, while the lowest CBF- α 1/Sox9 ratio ($3.33\pm 1.528/3.67\pm 1.155$) occurred in the control negative group on Day 21, with significant difference between the groups ($p<0.05$).

Conclusion: GSPCs cultured in PRF had potential osteogenic differentiation ability predicted by the CBF- α 1/sox9 ratio.

Keywords

Core-Binding Factor Subunit- α , Gingival Stromal Progenitor Cells, Osteogenic Differentiation, Platelet Rich Fibrin, Sox9.

Corresponding author: Fedik Abdul Rantam (fedik-a-r@fkh.unair.ac.id)

Author roles: **Nugraha AP:** Conceptualization, Data Curation, Formal Analysis, Funding Acquisition, Investigation, Methodology, Project Administration, Resources, Software, Supervision, Validation, Visualization, Writing – Original Draft Preparation, Writing – Review & Editing; **Narmada IB:** Conceptualization, Data Curation, Formal Analysis, Funding Acquisition, Investigation, Methodology, Project Administration, Resources, Software, Supervision, Validation, Visualization, Writing – Original Draft Preparation, Writing – Review & Editing; **Ernawati DS:** Conceptualization, Data Curation, Formal Analysis, Funding Acquisition, Investigation, Methodology, Project Administration, Resources, Software, Supervision, Validation, Visualization, Writing – Original Draft Preparation, Writing – Review & Editing; **Dinaryanti A:** Conceptualization, Data Curation, Formal Analysis, Funding Acquisition, Investigation, Methodology, Project Administration, Resources, Software, Supervision, Validation, Visualization, Writing – Original Draft Preparation, Writing – Review & Editing; **Hendrianto E:** Conceptualization, Data Curation, Formal Analysis, Funding Acquisition, Investigation, Methodology, Project Administration, Resources, Software, Supervision, Validation, Visualization, Writing – Original Draft Preparation, Writing – Review & Editing; **Ihsan IS:** Conceptualization, Data Curation, Formal Analysis, Funding Acquisition, Investigation, Methodology, Project Administration, Resources, Software, Supervision, Validation, Visualization, Writing – Original Draft Preparation, Writing – Review & Editing; **Riawan W:** Conceptualization, Data Curation, Formal Analysis, Funding Acquisition, Investigation, Methodology, Project Administration, Resources, Software, Supervision, Validation, Visualization, Writing – Original Draft Preparation, Writing – Review & Editing; **Rantam FA:** Conceptualization, Data Curation, Formal Analysis, Funding Acquisition, Investigation, Methodology, Project Administration, Resources, Software, Supervision, Validation, Visualization, Writing – Original Draft Preparation, Writing – Review & Editing

Competing interests: No competing interests were disclosed.

Grant information: The research was funded by the Progam Menuju Doktor Sarjana Unggul (PMDSU) Batch III of the Ministry of Research, Technology and Higher Education of the Republic of Indonesia (Kemristekdikti RI) (letter of appointment agreement number, 1035/D3/PG/2017; grant number 2146/D3/PG/2017).

The funders had no role in study design, data collection and analysis, decision to publish, or preparation of the manuscript.

Copyright: © 2018 Nugraha AP *et al.* This is an open access article distributed under the terms of the [Creative Commons Attribution License](#), which permits unrestricted use, distribution, and reproduction in any medium, provided the original work is properly cited. Data associated with the article are available under the terms of the [Creative Commons Zero "No rights reserved" data waiver](#) (CC0 1.0 Public domain dedication).

How to cite this article: Nugraha AP, Narmada IB, Ernawati DS *et al.* **Osteogenic potential of gingival stromal progenitor cells cultured in platelet rich fibrin is predicted by core-binding factor subunit- α 1/Sox9 expression ratio (*in vitro*) [version 1; peer review: 1 approved, 2 approved with reservations]** F1000Research 2018, 7:1134 (<https://doi.org/10.12688/f1000research.15423.1>)

First published: 25 Jul 2018, 7:1134 (<https://doi.org/10.12688/f1000research.15423.1>)

Introduction

Dental caries represents a major global dental public health problem because of their high prevalence. The World Health Organization reported that almost 90% of people worldwide suffered from caries¹. Basic Health Research of National Health (RISKESDAS) in 2013 reported that 93,998,727 Indonesians, 53.2% of the population, suffered from active caries². Dental caries must be treated appropriately because, if neglected, they become so severe that the affected teeth must be extracted. Indeed, the most common cause of tooth loss is dental caries³. Populations experiencing low socioeconomic conditions demonstrate higher prevalence and extent of tooth loss because of extremely limited access to dental treatment⁴.

Tooth extraction has been the most common form of dental treatment performed in Indonesia that can lead to bone defects. RISKESDAS statistics dating from 2014 indicated that treatment involving tooth extraction reached as high as 79.6% of cases⁵. A previous study of tooth extraction-related complications revealed the prevalence of fractures (31.82%), bleeding (4.54%) and swelling (2.27%)⁶. Tooth extraction can lead to alveolar bone resorption and the destruction of alveolar bone components. Moreover, it may lead to resorption of the jawbone⁷. Tooth extraction followed by buccolingual and apicocoronal dimension reduction of the alveolar ridge at the edentulous site might be performed due to bone defects⁸.

Alveolar bone defect regeneration has long represented a challenge in the field of dentistry. Various efforts have been made to accelerate bone regeneration, such as using bone grafts. The most current treatment performed in relation to the alveolar bone involves the use of platelet rich fibrin (PRF). PRF materials encouraging bone regeneration therapy have significantly improved the clinical outcomes stemming from the treatment of infrabony defects. PRF has achieved this through the maintaining of space for tissue regeneration by inducing an osteoinductive and osteoconductive effect in the alveolar bone defect area⁹.

Nowadays, alveolar bone defect treatment involving PRF using stromal progenitor cells (SPCs) is becoming increasingly widespread. SPCs have the advantage of being able to repair and regenerate various organs and tissue, and have been considerably used in bone tissue engineering, which offers encouraging solutions for bone regeneration^{10,11}. SPCs are non-hematopoietic stromal cells. They have multipotent capabilities, including immunomodulators and immunoregulators, paracrine, autocrine action, and migrate directly to the tissue initiating healing and regeneration making SPCs particularly suitable for regenerative medicine development¹²⁻¹⁴.

The orofacial region is a unique and rich source of SPCs. Those contained in the oral cavity and tooth tissue represent an emerging interesting and topical object for investigation because isolating progenitor cells from the oral tissues can be achieved with minimal invasive procedures compared to bone marrow

mesenchymal stem cell (BMSC) obtainment. The utilization of progenitor cells from the oral cavity is still rarely studied and applied. However, it is potentially advantageous for tissue regeneration and, therefore, merits further investigation¹⁵.

The SPCs that are potentially useful as part of regenerative alveolar bone therapy are gingival stromal progenitor cells (GSPCs) derived from hyperplastic gingival tissue (gum overgrowth) by means of a gingivectomy. GSPCs have phenotypic characteristics and abilities similar to those of BMSCs. GSPCs possess self-renewal capabilities and also demonstrate the specific ability to regenerate into alveolar bone when transplanted into immunocompromised mice. GSPCs also specifically induce bone matrix formation in lamellar structures by recruiting host cells^{11,15-17}. The osteogenic ability of GSPCs needs to be explored for further application and therapy.

During skeletal formation, master transcription genes such core-binding factor subunit- α (CBF- α 1) and Osterix have been identified¹⁸. However, their specific and distinct roles in various tissue types are still unclear. Sox9 is well known as a master gene regulator during chondrogenic differentiation, while CBF- α 1 plays an important role during osteogenic differentiation. GSPCs, as osteoprogenitors and chondroprogenitors, express Sox9 and Runx2 during skeletal formation condensation. There is also a direct interaction between Sox9 and CBF- α 1, which inhibits Sox9 activity¹⁸. Sox9 inhibitory effect on osteoblast maturation through CBF- α 1 is an essential mechanism for osteo-chondroprogenitor fate determination¹⁹.

In order for GSPCs to differentiate and proliferate optimally they require growth factors (GFs), various varieties of which are shown to promote osteogenic differentiation of SPCs *in vitro*. PRF is predicted to be combined to promote SPCs osteogenic differentiation and ensure mineralization *in vitro*¹⁹. PRF can be easily produced by centrifuging without anticoagulants. PRF is rich in GFs consisting of platelet derived growth factor- β (PDGF- β), transforming growth factor- β 1 (TGF β -1), vascular endothelial growth factor (VEGF) and insulin growth factor (IGF-I). PRF provides an effective scaffold to facilitate osteogenic differentiation of GSPCs²⁰⁻²³.

The osteogenic differentiation of GSPCs can be detected by various osteogenic marker expressions, such as CBF- α 1 expression. The observed osteogenic markers of GSPCs are CBF subunit- α 1 (CBF- α 1) and Sox9^{24,25}. Nonetheless, there is insufficient information regarding Sox9's role in osteogenesis of GSPCs *in vitro*. A study conducted by Stockl *et al.* mentioned that Sox9 plays a positive proliferative role in inhibiting and delaying osteogenic differentiation in rat SPCs²⁶.

The hypothesis of the current study is that GSPCs cultured in PRF can increase the CBF- α 1/Sox9 expression ratio during osteogenic differentiation. Furthermore, a second objective was to analyze GSPCs cultured in PRF osteogenic differentiation predicted by CBF- α 1/Sox9 expression ratio.

Methods

Ethical clearance

This study received ethical clearance relating to animal subjects from the Ethics Research Committee, Faculty of Dental Medicine, Universitas Airlangga, Surabaya, East Java, Indonesia (number 289/HRECC.FODM/XII/2017). The research was conducted at an experimental laboratory within the Stem Cell and Tissue Engineering Development Centre, Universitas Airlangga.

Research design and experimental animals

The research was fully experimental with a post-test only control group design. Sample groups were selected by means of simple random number sampling. Each animal was assigned a unique number, which were picked out of a hat by a blindfolded researcher.

The subjects consisted of male Wistar rats (*Rattus norvegicus*; n=4), who were adapted to the environment for 7 days. Wistar rats were obtained and cared for at the Stem Cell Animal Laboratory, Universitas Airlangga. All animals were housed in polycarbonate cages, subjected to a 12-hour light-dark cycle at the constant temperature of 23°C, and fed a standard pellet diet (expanded pellets; Stepfield, UK) with tap water *ad libitum* at a temperature of 22°C±2°C.

GPSCs were isolated from the lower gingival tissue of four 1-month old, healthy, mean weight = 250g, male rats through a gingivectomy, before the rats were euthanized with doses 60mg/body weight of ketamine and xylazine. Animal suffering was reduced when removing the GPSCs using rodent's anesthesia (intramuscular injection at 0.05–0.1ml/10g body weight rodent anesthesia: ketamine, xylazine, acepromazine, and sterile isotonic saline; Sigma Aldrich, USA) following Duan *et al's* method²³.

GPSCs was passaged every 4–5 days following Rantam *et al's* SPCs culture method²⁷. GPSCs in passage 3–5 were cultured in five M24 plates (Sigma-Aldrich) (N=108; n=6/group) until Day 7, Day 14 and Day 21 in three different culture mediums (control negative group, control positive group and treatment group; see below for details).

Sample size (n=4 for GPSCs isolation; n=36 for PRF isolation) was based on Lemeshow's formula to determine minimum sample size

Platelet rich fibrin isolation

A different population of rats were used for PRF isolation (n=36; 36 month old; mean weight = 250g). These male Wistar rats were maintained as above. Blood was aspirated through the left ventricle of each animals' heart, after anesthesia had been administered by injection using a 60mg/body weight dose of ketamine and a 3mg/body weight dose of xylazine (Sigma Aldrich). 1.5ml of blood was aspirated using a 3ml disposable syringe and then inserted in a vacutainer tube without an anticoagulant before being centrifuged at 3000 rpm/min for 10min (Kubota, Tokyo, Japan). The centrifuging was performed by inserting two balance tubes containing water with the same

weight as the tube of blood. When the tube is removed from the centrifuge, three layers will appear that are divided into three sections; the lower section consists of red blood cells, the middle section contains PRF and the upper section is formed of acellular plasma. The PRF was then isolated after which the PRF was cut into small pieces using sterile scissors and inserted into each culture plate of the treatment group^{22,28,29}.

Osteogenic differentiation in a combination of platelet rich fibrin and gingival stromal progenitor cells

The analysis was conducted on three groups, consisting of two control groups and one experimental group.

GSPC treatment group: GSPCs were cultured with PRF and containing ITS plus, 2mM L-glutamine, 100µg/ml sodium pyruvate, 0.2mM ascorbic acid-2 phosphate, dexamethasone 10⁻⁷ M (GeneTex, Taiwan), 10ng/ml TGF-β3 and high-dose glucose-Dulbecco's Modified Eagle Medium (DMEM-HG) (Sigma Aldrich).

Positive control group: GSPCs were placed on an osteogenic medium culture plate of ITS plus, 2 mM L-glutamine, 100µg/ml sodium pyruvate 0.2mM ascorbic acid-2 phosphate, dexamethasone 10⁻⁷ M (GeneTex).

Negative control group: GSPCs were cultured with αModified Eagle Medium (αMEM) (Sigma Aldrich).

Every three days, every group cell medium was replaced. Osteogenic differentiation was evaluated on Day 7, 14, 21 culture cells groups¹⁶.

GPSCs cultured cells were coated with coverslips and, after incubation at 37°C for 1 - 2 hours, were fixed using 10% formaldehyde for 15 min. The coverslips were then rinsed four times with PBS and dried for several minutes. The cells were blocked with PBS and FBS 1% for 15–30 minutes and washed with PBS four times. The samples were then examined following immunocytochemical staining by indirect technique using a 3,3'-diaminobenzidine stain kit (Pierce DAB Substrate Paint Kit 34002, Thermofisher™, Waltham, MA, USA) and monoclonal antibodies (Santa Cruz Biotechnology, Dallas, TX, USA): anti-CBF-α1 (mouse monoclonal; sc-101145) and anti-Sox9 (mouse monoclonal; sc-166505). CBF-α1 and Sox9 expression was read using a light microscope (CX22 Binocular, Olympus) at 200x magnification. Every cell expressing CBF1-α or Sox9 in one field was examined three times by three experts (WR, EH and FAR) and the mean was then calculated^{27,30,31}.

Data analysis

The data obtained was analyzed using ANOVA continued with Tukey HSD test (p<0.05) based on a Saphiro-Wilk normality test and a Levene's variance of homogeneity test (p>0.05). Data were analyzed using SPSS version 20.0 (IBM SPSS, Chicago, USA).

The experiments were replicated 3 times (n=54). The data was then duplicated (n=108) using an estimation formula and SPSS (see [Supplementary File 1](#) and [Supplementary File 2](#))³².

Results

The highest average CBF- α 1 expression was in the treatment group on Day 7, whereas the lowest was in the control (-) group on Day 21 (Figure 1 and Figure 2). Sox9 expression had the highest mean value in the treatment group on Day 7, while its lowest value was in the negative control group on Day 21 (Figure 3 and Figure 4).

The treatment group recorded the highest CBF- α 1/Sox9 ratio (16.00 \pm 3.000/14.33 \pm 2.517) on Day 7 while the lowest CBF- α 1/Sox9 ratio (3.33 \pm 1.528/3.67 \pm 1.155) was registered by the control negative group on Day 21 (Table 1). The data obtained was normal with homogeneous distribution (p>0.05).

There was significant difference between CBF- α 1 and Sox9 expression in each group (p<0.05) (Supplementary Table 1 and Supplementary Table 2).

Dataset 1. Raw results for CBF- α 1 and Sox9 expression for all time points for all treatment groups (N=108; n=6/group)

<http://dx.doi.org/10.5256/f1000research.15423.d210638>

Dataset 2. Raw image data

<http://dx.doi.org/10.5256/f1000research.15423.d210639>

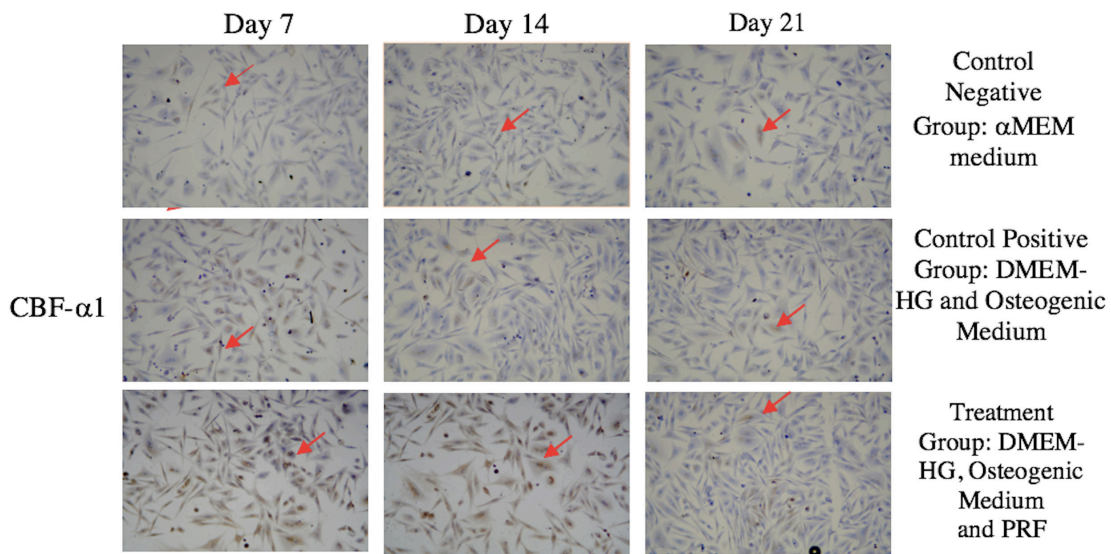


Figure 1. Core-binding factor subunit- α 1 (CBF- α 1) expression in gingival stromal progenitor cells (GSPCs) of Wistar rats (*Rattus Norvegicus*). (A-C) CBF- α 1 expression in the negative control group; (D-F) CBF- α 1 expression in the positive control group; (G-I) CBF- α 1 expression in the treatment group. CBF- α 1 expression in GSPCs was observed on Days 7, 14 and 21. Positive CBF- α 1 expression is highlighted in brown (red arrow) following an examination at 200x magnification (n=1).

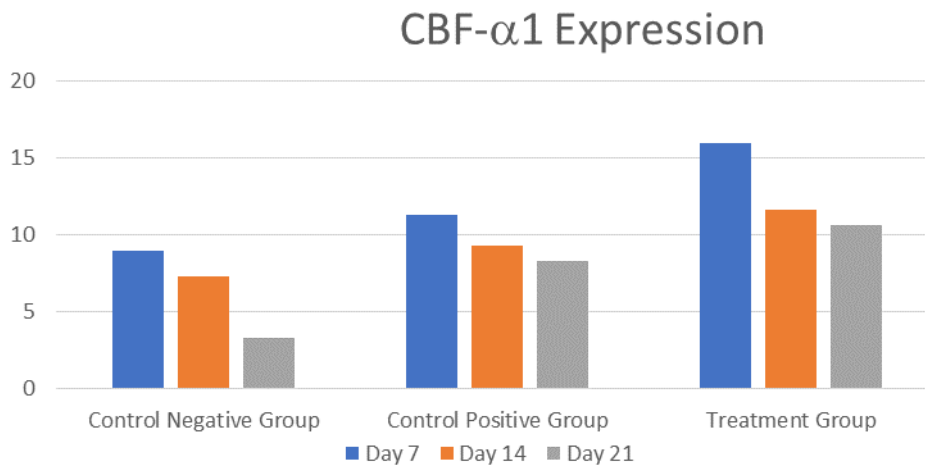


Figure 2. Mean core-binding factor subunit- α 1 (CBF- α 1) expression on Days 7, 14, 21 in each treatment group (n=6).

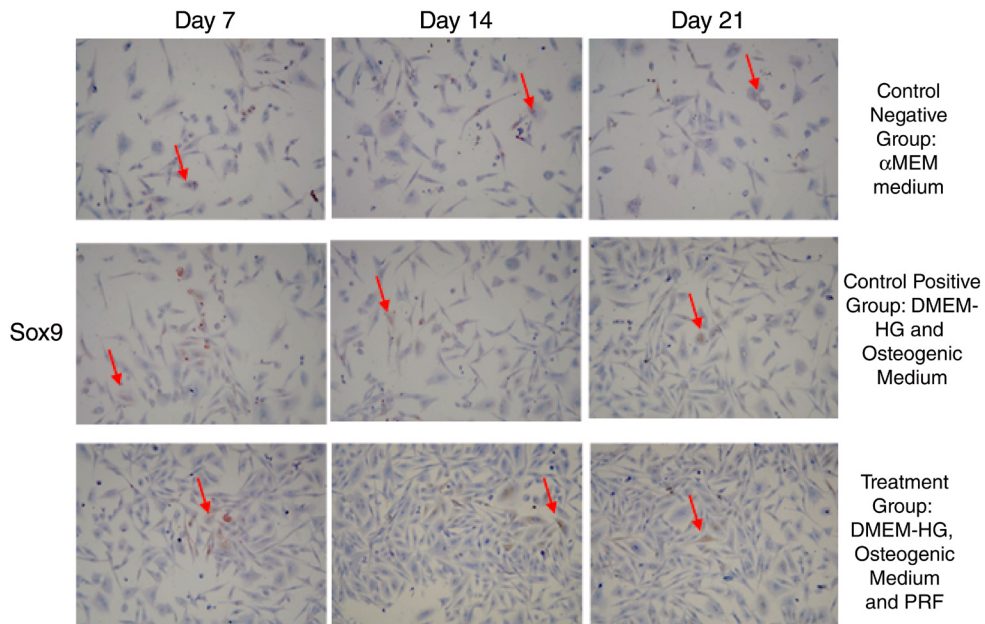


Figure 3. Sox9 expression in gingival stromal progenitor cells (GSPCs) of Wistar rats (*Rattus Novergicus*). (A-C) Sox9 expression in the negative control group; (D-F) Sox9 expression in the positive control group; (G-I) Sox9 expression in the treatment group. Sox9 expression in GSPCs was observed on Days 7, 14 and 21. Positive Sox9 expression is highlighted in brown (red arrow) following examination at 200x magnification (n=1).

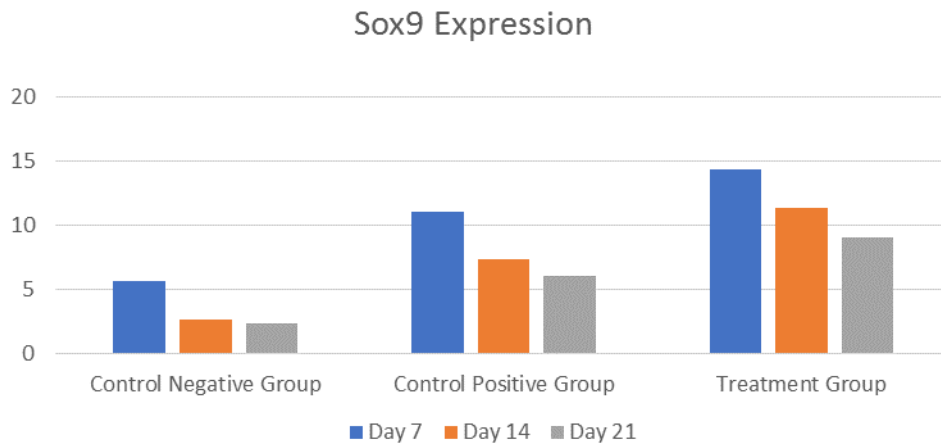


Figure 4. Mean Sox9 expression on Days 7, 14, 21 in each treatment group (n=6).

Table 1. CBF-α1/Sox9 expression ratio between groups.

Day	CBF-α1 expression			Sox9 expression			P-value*
	Negative control group	Positive control group	Treatment group	Negative control group	Positive control group	Treatment group	
7	9.00±2.000	11.33±1.528	16.00±3.000	5.67±1.155	11.00±1.00	14.33±2.517	0.00
14	7.33±1.528	9.33±0.577	11.67±2.082	2.67±0.577	7.33±1.528	11.33±1.528	0.00
21	3.33±1.528	8.33±1.155	10.67±1.528	2.33±1.155	6.00±1.000	9.00±2.000	0.00

Results are presented as the mean ± standard deviation. *One-way ANOVA, significant at p<0.05. CBF-α1: core-binding factor subunit-α1.

Discussion

GSPCs cultured in PRF expressed CBF- α 1 strongly. In this study, the highest CBF- α 1 expression was recorded by the treatment group on Day 7, with significant difference between groups. The CBF- α 1 expression declined between Day 14 and Day 21. The results of this study were in line with the research by Zou *et al.*, which suggested that CBF- α 1 expression is used to detect the osteogenic ability of SPCs using yellow fluorescent protein³³.

CBF- α 1 is a master key gene transcription factor associated with osteoblast differentiation, which initiates temporally and spatially controlled osteogenesis. Disturbances to CBF- α 1 result in obstacles to bone formation because osteoblast differentiation cannot occur. Loss of CBF- α 1 expression gene function in the early stages will interfere with osteogenic differentiation and homeostasis in bone development. CBF- α 1 is often expressed strongly between Day 7 and Day 14^{23,25}. Osterix and CBF- α 1 periodically regulate osteoblast differentiation processes^{34,35}. A study conducted by Loebel *et al.* showed that CBF- α 1 expression increased on Day 7, while Duan *et al.*'s study demonstrated that CBF- α 1 expression increased on Day 12 as detected by RT-PCR^{19,23}. Such findings differed from the results of this study due to the contrasting methods and samples employed, but there were similarities in that CBF- α 1 was an early marker of osteogenic differentiation.

CBF- α 1 plays an important role in the early stages of BMSCs differentiation into preosteoblasts. CBF- α 1 is generally a preliminary regulator and Osterix is a regulator activator during osteoblast differentiation. Both of these osteoblastogenic coding genes are stimulated and regulated by various signaling pathways, such as the canonical Wnt signaling pathway and bone morphogenetic protein (BMP). Wnt/Cytosolic β -catenin stimulates osteoblastogenesis through the activation of osteogenic transcription factors CBF- α 1 and Osterix³⁶. CBF- α 1 is known as an important regulatory gene during osteogenic development by enhancing specific osteoblastic differentiation by inducing osteogenic extracellular matrix gene expression during osteoblast maturation, such as collagen- $I\alpha$, alkaline phosphatase, and osteocalcin³³.

In the present study, the GSPCs cultured in PRF stimulates CBF- α 1 expression because PRF is rich in various GFs, such as TGF β -1, PDGF, IGF, VEGF, FGF, EGF, and HGF. PRF promotes migration, proliferation and differentiation of mesenchymal stem cells as well as neovascularization and collagen synthesis. PRF also promotes, accelerates and improves the quality of soft and bone tissue regeneration²³. According to Li *et al.*, PRF significantly promotes the induction of mineralization of progenitor cells in alveolar bone, and endogenous stem cells present in the dental tissue that increases exclusively in CBF- α 1 expression^{37,38}.

Interestingly, GSPCs cultured PRF in this study increased Sox9 even in an osteogenic culture medium with significant difference with the control groups. In this study, the highest Sox9 expression occurred in the treatment group on Day 7. The results of this study were supported by those of a study by Sumarta *et al.*, which stated that SPCs cultured in PRF stimulate Sox9 expression²². Sox9 expression showed a positive expression,

thereby establishing the role of Sox9 during bone formation. In a knockout Sox9 animal model, osteogenic differentiation was also delayed³⁹. Significantly, recent genetics studies stated that Sox9 in SPCs could eventually differentiate into osteoblasts⁴⁰. Therefore, the inhibitory effect of Sox9 on osteoblastic and chondrocyte maturation via repression of CBF- α 1 function is an essential mechanism for osteo-chondroprogenitor cell fate determination⁴¹.

In this study, GSPCs-cultured PRF regulated and stimulated both CBF- α 1/Sox9 expression ratio on Day 7 with significant difference between groups. The interaction and cooperation between CBF- α 1/Sox9 is a mandatory master transcription gene for cartilage and bone development¹⁸. As Sox9 inhibited and downregulated CBF- α 1 on Day 7, it may be even more sensitive to predict osteogenic differentiation ability of SPCs. Furthermore, while Sox9 expression was downregulated, osteogenic differentiation ability was stimulated during early osteogenic differentiation *in vitro*. Nevertheless, CBF- α 1/Sox9 expression ratio on Day 7 could be used to predict the osteogenic differentiation ability of GMSCs, suggesting a balance between CBF- α 1/Sox9 in the earlier regulatory bone formation and regeneration^{19,41}.

Conclusion

GSPCs cultured in PRF increased CBF- α 1/Sox9 expression on Day 7. GSPCs cultured in PRF possessed potential osteogenic differentiation ability as predicted by the CBF- α 1/sox9 expression ratio. CBF- α 1/Sox9 expression constitutes a promising future *in vitro* screening method employed to detect the earliest osteogenic differentiation of SPCs. Further study is required to analyze any association with CBF- α 1/Sox9 expression ratio *in vivo*.

Data availability

Dataset 1: Raw results for CBF- α 1 and Sox9 expression for all time points for all treatment groups (N=108; n=6/group). DOI, [10.5256/f1000research.15423.d210638](https://doi.org/10.5256/f1000research.15423.d210638)⁴²

Dataset 2: Raw image data. DOI, [10.5256/f1000research.15423.d210639](https://doi.org/10.5256/f1000research.15423.d210639)⁴³

Competing interests

No competing interests were disclosed.

Grant information

The research was funded by the Progam Menuju Doktor Sarjana Unggul (PMDSU) Batch III of the Ministry of Research, Technology and Higher Education of the Republic of Indonesia (Kemenristekdikti RI) (letter of appointment agreement number, 1035/D3/PG/2017; grant number 2146/D3/PG/2017).

The funders had no role in study design, data collection and analysis, decision to publish, or preparation of the manuscript.

Acknowledgments

The authors would like to thank the Postgraduate School, Department of Dental Medicine, Faculty of Medicine, Stem Cell Research and Development Centre, Universitas Airlangga for its support of the research reported here.

Supplementary material

Supplementary Table 1. Tukey HSD multiple comparison between groups of CBF- α 1.

[Click here to access the data.](#)

Supplementary Table 2. Tukey HSD multiple comparison between groups of Sox9 expression.

[Click here to access the data.](#)

Supplementary File 1: Estimation resume of CBF- α 1 expression.

[Click here to access the data.](#)

Supplementary File 2: Estimation resume of Sox9 expression.

[Click here to access the data.](#)

References

- Petersen PE, Bourgeois D, Ogawa H, *et al.*: **The global burden of oral diseases and risks to oral health.** *Bull World Health Organ.* 2005; **83**(9): 661–69.
[PubMed Abstract](#) | [Free Full Text](#)
- Ministry of Health and National Institute of Health Research and Development: **National report on basic health research, RISKESDAS, 2013.** Jakarta, Indonesia, 2014 (and additional analysis). Ministry of Health, Republic of Indonesia, Jakarta.
- Lee JH, Oh JY, Choi JK, *et al.*: **Trends in the incidence of tooth extraction due to periodontal disease: results of a 12-year longitudinal cohort study in South Korea.** *J Periodontal Implant Sci.* 2017; **47**(5): 264–272.
[PubMed Abstract](#) | [Publisher Full Text](#) | [Free Full Text](#)
- Susin C, Oppermann RV, Haugejorden O, *et al.*: **Tooth loss and associated risk indicators in an adult urban population from south Brazil.** *Acta Odontol Scand.* 2005; **63**(2): 85–93.
[PubMed Abstract](#) | [Publisher Full Text](#)
- Ministry of Health Republic of Indonesia: **Health Profile in Indonesia 2014.** Ministry of Health Republic of Indonesia. Sekretaris Jenderal. Jakarta, 2015.
[Reference Source](#)
- Lande R, Kepel BJ, Siagian KV: **Profile of Risk Factor and Complication of Tooth Extraction at RSGM PSPDG-FK Unsrat.** *Jurnal E-Gigi (Eg).* 2015; **3**(2): 1–6.
- Hamzah Z, Kartikasari N: **Irrational Tooth Extraction increasing structural and functional bone resorption.** *Stomatognathic (J. K. G Unej).* 2015; **12**(2): 61–6.
- Schropp L, Wenzel A, Kostopoulos L, *et al.*: **Bone healing and soft tissue contour changes following single-tooth extraction: a clinical and radiographic 12-month prospective study.** *Int J Periodontics Restorative Dent.* 2003; **23**(4): 313–323.
[PubMed Abstract](#)
- Chang IC, Tsai CH, Chang YC: **Platelet-rich fibrin modulates the expression of extracellular signal-regulated protein kinase and osteoprotegerin in human osteoblasts.** *J Biomed Mater Res A.* 2010; **95**: 327–32.
[PubMed Abstract](#) | [Publisher Full Text](#)
- Barzilay R, Melamed E, Offen D: **Introducing transcription factors to multipotent mesenchymal stem cells: making transdifferentiation possible.** *Stem Cells.* 2009; **27**(10): 2509–2515.
[PubMed Abstract](#) | [Publisher Full Text](#)
- Egusa H, Sonoyama W, Nishimura M, *et al.*: **Stem cells in dentistry—part I: stem cell sources.** *J Prosthodont Res.* 2012; **56**(3): 151–165.
[PubMed Abstract](#) | [Publisher Full Text](#)
- Augello A, Kurth TB, De Bari C: **Mesenchymal stem cells: a perspective from *in vitro* cultures to *in vivo* migration and niches.** *Eur Cell Mater.* 2010; **20**: 121–133.
[PubMed Abstract](#) | [Publisher Full Text](#)
- Law S, Chaudhuri S: **Mesenchymal stem cell and regenerative medicine: regeneration versus immunomodulatory challenges.** *Am J Stem Cells.* 2013; **2**(1): 22–38.
[PubMed Abstract](#) | [Free Full Text](#)
- Gao F, Chiu SM, Motan DA, *et al.*: **Mesenchymal stem cells and immunomodulation: current status and future prospects.** *Cell Death Dis.* 2016; **7**: e2062.
[PubMed Abstract](#) | [Publisher Full Text](#) | [Free Full Text](#)
- Egusa H, Sonoyama W, Nishimura M, *et al.*: **Stem cells in dentistry—Part II: Clinical applications.** *J Prosthodont Res.* 2012; **56**(4): 229–248.
[PubMed Abstract](#) | [Publisher Full Text](#)
- Niibe K, Suehiro F, Oshima M, *et al.*: **Challenges for stem cell-based “regenerative prosthodontics”.** *J Prosthodont Res.* 2017; **61**(1): 3–5.
[PubMed Abstract](#) | [Publisher Full Text](#)
- Miran S, Mitsiadis TA, Pagella P: **Innovative Dental Stem Cell-Based Research Approaches: The Future of Dentistry.** *Stem Cells Int.* 2016; **2016**: 7231038.
[PubMed Abstract](#) | [Publisher Full Text](#) | [Free Full Text](#)
- Zhou G, Zheng Q, Engin F, *et al.*: **Dominance of SOX9 function over RUNX2 during skeletogenesis.** *Proc Natl Acad Sci U S A.* 2006; **103**(50): 19004–9.
[PubMed Abstract](#) | [Publisher Full Text](#) | [Free Full Text](#)
- Loebel C, Czekanska EM, Bruderer M, *et al.*: ***In vitro* osteogenic potential of human mesenchymal stem cells is predicted by Runx2/Sox9 ratio.** *Tissue Eng Part A.* 2015; **21**(1–2): 115–23.
[PubMed Abstract](#) | [Publisher Full Text](#) | [Free Full Text](#)
- Baek HS, Lee HS, Kim BJ, *et al.*: **Effect of platelet-rich fibrin on repair of defect in the articular disc in rabbit temporomandibular joint by platelet-rich fibrin.** *Tissue Engineering and Regenerative Medicine.* 2011; **8**(6): 530–535.
[Reference Source](#)
- Kazemi D, Fakhriou A, Dizaji VM, *et al.*: **Effect of autologous platelet rich fibrin on the healing of experimental articular cartilage defects of the knee in an animal model.** *Biomed Res Int.* 2014; **2014**: 486436.
[PubMed Abstract](#) | [Publisher Full Text](#) | [Free Full Text](#)
- Sumarta NPM, Pramono DC, Hendrianto E, *et al.*: **Chondrogenic Differentiation Capacity of Human Umbilical Cord Mesenchymal Stem Cells with Platelet Rich Fibrin Scaffold in Cartilage Regeneration (*In Vitro* Study).** *Bali Med J.* 2016; **5**(3): 420–426.
[Publisher Full Text](#)
- Duan X, Lin Z, Lin X, *et al.*: **Study of platelet-rich fibrin combined with rat periodontal ligament stem cells in periodontal tissue regeneration.** *J Cell Mol Med.* 2018; **22**(2): 1047–1055.
[PubMed Abstract](#) | [Free Full Text](#)
- Marie PJ, Fromigué O: **Osteogenic differentiation of human marrow-derived mesenchymal stem cells.** *Regen Med.* 2006; **1**(4): 539–48.
[PubMed Abstract](#) | [Publisher Full Text](#)
- Shui C, Spelsberg TC, Riggs BL, *et al.*: **Changes in Runx2/Cbfa1 expression and activity during osteoblastic differentiation of human bone marrow stromal cells.** *J Bone Miner Res.* 2003; **18**(2): 213–21.
[PubMed Abstract](#) | [Publisher Full Text](#)
- Stöckl S, Göttl C, Grifka J, *et al.*: **Sox9 modulates proliferation and expression of osteogenic markers of adipose-derived stem cells (ASC).** *Cell Physiol Biochem.* 2013; **31**(4–5): 703–17.
[PubMed Abstract](#) | [Publisher Full Text](#)
- Rantam FA, Ferdiansyah P: **Stem cell mesenchymal, Hematopoietic Stem Cells and Application Model.** 2nd Ed. Surabaya: Airlangga University Press, 2014; **2**: 38.
- Borie E, Oliví DG, Orsi IA, *et al.*: **Platelet-rich fibrin application in dentistry: a literature review.** *Int J Clin Exp Med.* 2015; **8**(5): 7922–7929.
[PubMed Abstract](#) | [Free Full Text](#)
- Rahmawati D, Roestamadji RI, Yulianti A, *et al.*: **Osteogenic ability of combined hematopoietic stem cell, hydroxyapatite graft and platelet rich fibrin on rats (*Rattus norvegicus*).** *Journal of Krishna Institute of Medical Sciences University.* 2017; **6**(4): 88–95.
[Reference Source](#)
- Kamadajaja MJK, Salim S, Rantam FA: **Osteogenic Potential Differentiation of Human Amnion Mesenchymal Stem Cell with Chitosan-Carbonate Apatite**

- scaffold (*in vitro* study). *Bali Med J.* 2016; 5(3): 427–433.
[Publisher Full Text](#)
31. Ekizer A, Yalvac ME, Uysal T, *et al.*: **Bone marrow mesenchymal stem cells enhance bone formation in orthodontically expanded maxillae in rats.** *Angle Orthod.* 2015; 85(3): 394–399.
[PubMed Abstract](#) | [Publisher Full Text](#)
 32. Karangwa I, Kotze D: **Using the Markov Chain Monte Carlo Method to Make Inferences on Items of Data Contaminated by Missing Values.** *American Journal of Theoretical and Applied Statistics.* 2013; 2(3): 48–53.
[Publisher Full Text](#)
 33. Zou L, Kidwai FK, Kopher RA, *et al.*: **Use of RUNX2 expression to identify osteogenic progenitor cells derived from human embryonic stem cells.** *Stem Cell Reports.* 2015; 4(2): 190–198.
[PubMed Abstract](#) | [Publisher Full Text](#) | [Free Full Text](#)
 34. Brunetti G, Mori G, D'Amelio P, *et al.*: **The crosstalk between the bone and the immune system: Osteoimmunology.** *Clinical and Developmental Immunology.* 2013; 2013: 617319.
[Publisher Full Text](#)
 35. Crotti TN, Dharmapatni AA, Alias E, *et al.*: **Osteoimmunology: Major and Costimulatory Pathway Expression Associated with Chronic Inflammatory Induced Bone Loss.** *J Immunol Res.* 2015; 2015: 281287.
[PubMed Abstract](#) | [Publisher Full Text](#) | [Free Full Text](#)
 36. Graves DT, Kayal RA, Oates T: **Chapter 19 - Osteoimmunology in the Oral Cavity (Periodontal Disease, Lesions of Endodontic Origin, and Orthodontic Tooth Movement).** *Osteoimmunology.* 2016; 325–344.
[Publisher Full Text](#)
 37. Li Q, Pan S, Dangaria SJ, *et al.*: **Platelet-rich fibrin promotes periodontal regeneration and enhances alveolar bone augmentation.** *Biomed Res Int.* 2013; 2013: 638043.
[PubMed Abstract](#) | [Publisher Full Text](#) | [Free Full Text](#)
 38. Li Q, Reed DA, Min L, *et al.*: **Lyophilized platelet-rich fibrin (PRF) promotes craniofacial bone regeneration through Runx2.** *Int J Mol Sci.* 2014; 15(5): 8509–8525.
[PubMed Abstract](#) | [Publisher Full Text](#) | [Free Full Text](#)
 39. Akiyama H, Lyons JP, Mori-Akiyama Y, *et al.*: **Interactions between Sox9 and beta-catenin control chondrocyte differentiation.** *Genes Dev.* 2004; 18(9): 1072–1087.
[PubMed Abstract](#) | [Publisher Full Text](#) | [Free Full Text](#)
 40. Akiyama H, Kim JE, Nakashima K, *et al.*: **Osteo-chondroprogenitor cells are derived from Sox9 expressing precursors.** *Proc Natl Acad Sci U S A.* 2005; 102(41): 14665–14670.
[PubMed Abstract](#) | [Publisher Full Text](#) | [Free Full Text](#)
 41. Zhou G, Zheng Q, Engin F, *et al.*: **Dominance of SOX9 function over RUNX2 during skeletogenesis.** *Proc Natl Acad Sci U S A.* 2006; 103(50): 19004–19009.
[PubMed Abstract](#) | [Publisher Full Text](#) | [Free Full Text](#)
 42. Nugraha AP, Narmada IB, Ernawati DS, *et al.*: **Dataset 1 in: Osteogenic potential of gingival stromal progenitor stem cells cultured in plasma rich fibrin is predicted by core-binding factor subunit-a1/Sox9 expression ratio (*in vitro*).** *F1000Research.* 2018.
[Data Source](#)
 43. Nugraha AP, Narmada IB, Ernawati DS, *et al.*: **Dataset 2 in: Osteogenic potential of gingival stromal progenitor stem cells cultured in plasma rich fibrin is predicted by core-binding factor subunit-a1/Sox9 expression ratio (*in vitro*).** *F1000Research.* 2018.
[Data Source](#)

Open Peer Review

Current Peer Review Status: ? ✓ ?

Version 1

Reviewer Report 16 August 2018

<https://doi.org/10.5256/f1000research.16808.r36777>

© 2018 Soegiharto B. This is an open access peer review report distributed under the terms of the [Creative Commons Attribution License](#), which permits unrestricted use, distribution, and reproduction in any medium, provided the original work is properly cited.



Benny M. Soegiharto

Department of Orthodontics, Faculty of Dentistry, University of Indonesia, Jakarta, Indonesia

First of all, please allow me to congratulate the authors for attempting to undertake this project which I found very interesting and of valuable additional knowledge. The manuscript itself is well-written and well-structured and I have to also commend the authors for this matter. However, I may require some clarifications on the following issues:

1. What would be the arguments of dividing into the 3 groups as well as using such media treatment for each group (GSPC, + and - groups). This would be beneficial for readers to replicate in future use.
2. What would be the reason for determining the evaluation of osteogenic differentiation on Day 7, 14 and 21 cell groups? At the end of that sentence, there was a quote of another work. However, I think it would make this manuscript even clearer if this could be briefly mentioned.

Is the work clearly and accurately presented and does it cite the current literature?

Yes

Is the study design appropriate and is the work technically sound?

Yes

Are sufficient details of methods and analysis provided to allow replication by others?

Yes

If applicable, is the statistical analysis and its interpretation appropriate?

Yes

Are all the source data underlying the results available to ensure full reproducibility?

Yes

Are the conclusions drawn adequately supported by the results?

Yes

Competing Interests: No competing interests were disclosed.

I confirm that I have read this submission and believe that I have an appropriate level of expertise to confirm that it is of an acceptable scientific standard, however I have significant reservations, as outlined above.

Reviewer Report 15 August 2018

<https://doi.org/10.5256/f1000research.16808.r36776>

© 2018 Ali Alhasyimi A. This is an open access peer review report distributed under the terms of the [Creative Commons Attribution License](#), which permits unrestricted use, distribution, and reproduction in any medium, provided the original work is properly cited.



Ananto Ali Alhasyimi 

Department of Orthodontics, Faculty of Dentistry, Gadjah Mada University (UGM), Yogyakarta, Indonesia

The authors of this study have investigated the role of GSPCs cultured in PRF in increasing the CBF- α 1/Sox9 expression ratio during osteogenic differentiation. Based on the study results, the authors have concluded that the GSPCs cultured in PRF increased CBF- α 1/Sox9 expression on Day 7. The results are certainly interesting and the authors are commended for executing this study.

However, the authors need to address the following minor concerns:

General:

1. Paper is well organized and easy to follow.
2. Novelty is sufficient and high impact.
3. To improve the readability, It is recommended that the text is checked by a native English speaking person as many of the sentences might be misunderstood. I suggest a revision of the English grammar structures by an expert editor in revising manuscripts.

Introduction:

1. The authors have mentioned "Furthermore, a second objective was ...", however, I didn't find the first objective. Please change this section
2. The Introduction section is too long, you can try to simplify this section (please move some of the key mechanism of the materials in enhancing CBF- α 1/Sox9 expression in the discussion part

Results:

1. Please provide and add some information about standard deviation of the data in the diagrams.
2. Please indicate whether the difference is significant or not in your graph/ diagrams as well, using some symbols (asteric).

Discussion:

1. Discussion of the results is quite comprehensive. In analyzing the results, the authors also show citations from the previous study to support the explanation of these results.
2. The answer to the hypothesis of this study should be included at the beginning of the discussion section.
3. Please mention the limitation of this study in the discussion section for

References:

The supporting references are too long for the medium article

Is the work clearly and accurately presented and does it cite the current literature?

Yes

Is the study design appropriate and is the work technically sound?

Yes

Are sufficient details of methods and analysis provided to allow replication by others?

Yes

If applicable, is the statistical analysis and its interpretation appropriate?

Yes

Are all the source data underlying the results available to ensure full reproducibility?

Yes

Are the conclusions drawn adequately supported by the results?

Yes

Competing Interests: No competing interests were disclosed.

Reviewer Expertise: Biological tooth movement

I confirm that I have read this submission and believe that I have an appropriate level of expertise to confirm that it is of an acceptable scientific standard.

Reviewer Report 13 August 2018

<https://doi.org/10.5256/f1000research.16808.r36488>

© 2018 Hong G. This is an open access peer review report distributed under the terms of the [Creative Commons Attribution License](#), which permits unrestricted use, distribution, and reproduction in any medium, provided the original work is properly cited.



Guang Hong

Liaison Center for Innovative Dentistry, Graduate School of Dentistry, Tohoku University, Sendai, Japan

This paper needs major revision. I would make the following comments.

Introduction:

1. In final part, you said “Furthermore, a second objective was ...”, however I cannot find your first objective. What is the first objective of your study?

I think you should change this part to “The objective of this study was to analyze GSPCs cultured in PRF osteogenic differentiation predicted by CBF- α 1/Sox9 expression ratio. The hypothesis of the current study is that GSPCs cultured in PRF can increase the CBF- α 1/Sox9 expression ratio during osteogenic differentiation.”

2. The reason that why you do this research in necessary in Introduction section. And also please add the that is the problem of current and past research regarding relationship of osteogenic and CBF- α 1/Sox9 ratio?

Methods:

3. The materials section is too long, you can try to simplify this section.

Discussion:

4. The answer of hypothesis of this study should be included in the discussion section.

5. The discussion about the experiment method and selection of material is necessary. There was no discussion why expression differences existed. The authors need to discuss based upon the mechanism otherwise the paper is going to be a laboratory report.

6. Please add the clinical implications of your study and clinical significance of the findings in discussion section.

7. What is the limitation of this study? You should indicate at this section.

Figure:

8. Fig. 1 and Fig. 3: Please indicate which pic is A, B, C..... and H, I.

9. Fig. 2 and Fig. 4: Please add the SD (standard deviation) to your bar graph. And if possible also add the results of statistical analysis to your graph.

Is the work clearly and accurately presented and does it cite the current literature?

Partly

Is the study design appropriate and is the work technically sound?

Yes

Are sufficient details of methods and analysis provided to allow replication by others?

Yes

If applicable, is the statistical analysis and its interpretation appropriate?

Yes

Are all the source data underlying the results available to ensure full reproducibility?

Partly

Are the conclusions drawn adequately supported by the results?

Partly

Competing Interests: No competing interests were disclosed.

I confirm that I have read this submission and believe that I have an appropriate level of expertise to confirm that it is of an acceptable scientific standard, however I have significant reservations, as outlined above.

The benefits of publishing with F1000Research:

- Your article is published within days, with no editorial bias
- You can publish traditional articles, null/negative results, case reports, data notes and more
- The peer review process is transparent and collaborative
- Your article is indexed in PubMed after passing peer review
- Dedicated customer support at every stage

For pre-submission enquiries, contact research@f1000.com

F1000Research