



REVIEW

# Recent advances in understanding lymphangiogenesis and metabolism [version 1; peer review: 3 approved]

Heon-Woo Lee, Pengchun Yu, Michael Simons

Yale Cardiovascular Research Center, Section of Cardiovascular Medicine, Department of Internal Medicine, Yale University School of Medicine, New Haven, CT, USA

**V1** **First published:** 20 Jul 2018, 7(F1000 Faculty Rev):1114 (<https://doi.org/10.12688/f1000research.14803.1>)

**Latest published:** 20 Jul 2018, 7(F1000 Faculty Rev):1114 (<https://doi.org/10.12688/f1000research.14803.1>)

**Abstract**

The blood and lymphatic vasculatures are vital to the maintenance of homeostasis. The interaction between two vascular networks throughout the body is precisely controlled to enable oxygen and nutrient delivery, removal of carbon dioxide and metabolic waste, drainage of interstitial fluid, transport of immune cells, and other key activities. Recent years have seen an explosion of information dealing with the development and function of the lymphatic system. The growth of lymphatic vessels, termed lymphangiogenesis, is a high-energy requirement process that involves sprouting, proliferation, migration, and remodeling of lymphatic endothelial cells and capillaries. Although there has been substantial progress in identifying growth factors and their downstream signaling pathways that control lymphangiogenesis, the role of metabolic processes during lymphangiogenesis and their links to growth factor signaling are poorly understood. In this review, we will discuss recent work that has provided new insights into lymphatic metabolism and its role in lymphangiogenesis.

**Keywords**

lymphatic system, lymphangiogenesis, metabolism, homeostasis, blood and lymphatic vasculatures

**Open Peer Review**

**Reviewer Status**

	Invited Reviewers		
	1	2	3
<b>version 1</b> published 20 Jul 2018			

F1000 Faculty Reviews are written by members of the prestigious F1000 Faculty. They are commissioned and are peer reviewed before publication to ensure that the final, published version is comprehensive and accessible. The reviewers who approved the final version are listed with their names and affiliations.

- Young-Kwon Hong**, University of Southern California, Los Angeles, USA
- Sathish R Srinivasan**, Cardiovascular Biology Research Program, Oklahoma City, USA
- Joseph M Rutkowski**, Department of Medical Physiology, Texas, USA

Any comments on the article can be found at the end of the article.

**Corresponding author:** Michael Simons ([Michael.simons@yale.edu](mailto:Michael.simons@yale.edu))

**Author roles:** Lee HW: Writing – Original Draft Preparation; Yu P: Writing – Original Draft Preparation; Simons M: Conceptualization, Supervision, Writing – Review & Editing

**Competing interests:** No competing interests were disclosed.

**Grant information:** This work is supported by National Institutes of Health grants P01 HI107205, HL084619 and HL135582.  
*The funders had no role in study design, data collection and analysis, decision to publish, or preparation of the manuscript.*

**Copyright:** © 2018 Lee HW *et al.* This is an open access article distributed under the terms of the [Creative Commons Attribution Licence](#), which permits unrestricted use, distribution, and reproduction in any medium, provided the original work is properly cited.

**How to cite this article:** Lee HW, Yu P and Simons M. **Recent advances in understanding lymphangiogenesis and metabolism [version 1; peer review: 3 approved]** F1000Research 2018, 7(F1000 Faculty Rev):1114 (<https://doi.org/10.12688/f1000research.14803.1>)

**First published:** 20 Jul 2018, 7(F1000 Faculty Rev):1114 (<https://doi.org/10.12688/f1000research.14803.1>)

## Introduction

Adenosine 5'-triphosphate (ATP) is the main carrier of cellular energy and its generation is tightly coupled to metabolic demand, ensuring sufficient energy for cellular growth, repair, movement, and other biological processes<sup>1</sup>. The three principal sources used by mammalian cells to generate ATP molecules are fats, proteins, and carbohydrates<sup>2</sup>. These three nutrients are referred to as “mitochondrial nutrients” because they are essential commodities to yield ATP in mitochondria<sup>3</sup>. This process of generation of ATP in the mitochondria is referred to as oxidative phosphorylation, since it involves phosphorylation of ADP (to produce ATP) as a result of electron transfer from NADH or FADH<sub>2</sub> to O<sub>2</sub> by a series of oxidative reactions<sup>4</sup>. The end product is the generation of 32 ATP molecules from one molecule of glucose<sup>5</sup>. In addition to oxidative phosphorylation, ATP also can be generated anaerobically by glycolysis. During glycolysis, one molecule of glucose is converted into two molecules of lactate with the production of two molecules of ATP<sup>6</sup>. Traditionally, it has been assumed that normal cells rely predominantly on mitochondrial oxidative phosphorylation to yield most of the ATP needed for cellular work<sup>7</sup>. As will be described below, the situation in the endothelium, both blood and lymphatic, is quite different.

The lymphatic vasculature serves a number of key functions, including regulation of interstitial fluid homeostasis and immune cell transport<sup>8</sup>. The majority of lymphatic endothelial cells (LECs) are derived from the anterior cardinal vein endothelial cells (ECs) around embryonic day 9.5<sup>9,10</sup>, although there are alternative sources for LECs in the skin<sup>11</sup>, heart<sup>12</sup>, and intestine<sup>13</sup>. During lymphangiogenesis, the primary lymphatic plexus is reorganized into lymphatic capillaries, lymph nodes, and collecting lymphatic vessels<sup>14,15</sup>. Lymphatic capillaries serve as entry points for the interstitial fluid that then is transported, via collecting lymphatic vessels, back to the blood circulation via the thoracic duct that drains into the left subclavian vein. Similarly, immune cells enter the lymphatics via its open-ended capillaries and then are transported to regional lymph nodes<sup>16</sup>. Not surprisingly, all processes involved in lymphatic vasculature specification, formation, and maintenance, as well as performance of normal everyday activities, require energy. Recent advances have led to a better understanding of lymphatic metabolism and their contribution to lymphangiogenesis, which is the subject of this review.

## Metabolic environment of lymphatic endothelial cells

The lymphatic endothelium exists in a unique metabolic environment. The lymphatic fluid is rich in nutrients, even though it is the product of drainage of fluid waste from peripheral tissues. Typically, LECs are exposed to high concentrations of glucose (4–6 mM)<sup>17,18</sup>, total protein (8–32 g/L)<sup>17</sup>, and triglycerides (8–40 mg/dL)<sup>17,18</sup>. At the same time, oxygen concentration in the lymphatic fluid in the thoracic duct and capillary lymphatics is relatively low with partial pressure of oxygen (pO<sub>2</sub>) 15–42 mmHg in the lymph fluid compared with 80–100 mmHg in the arterial blood<sup>19–22</sup>. This environment may, to an extent, account for the metabolic peculiarities of the lymphatic endothelium.

## Glucose metabolism in lymphatic endothelial cells

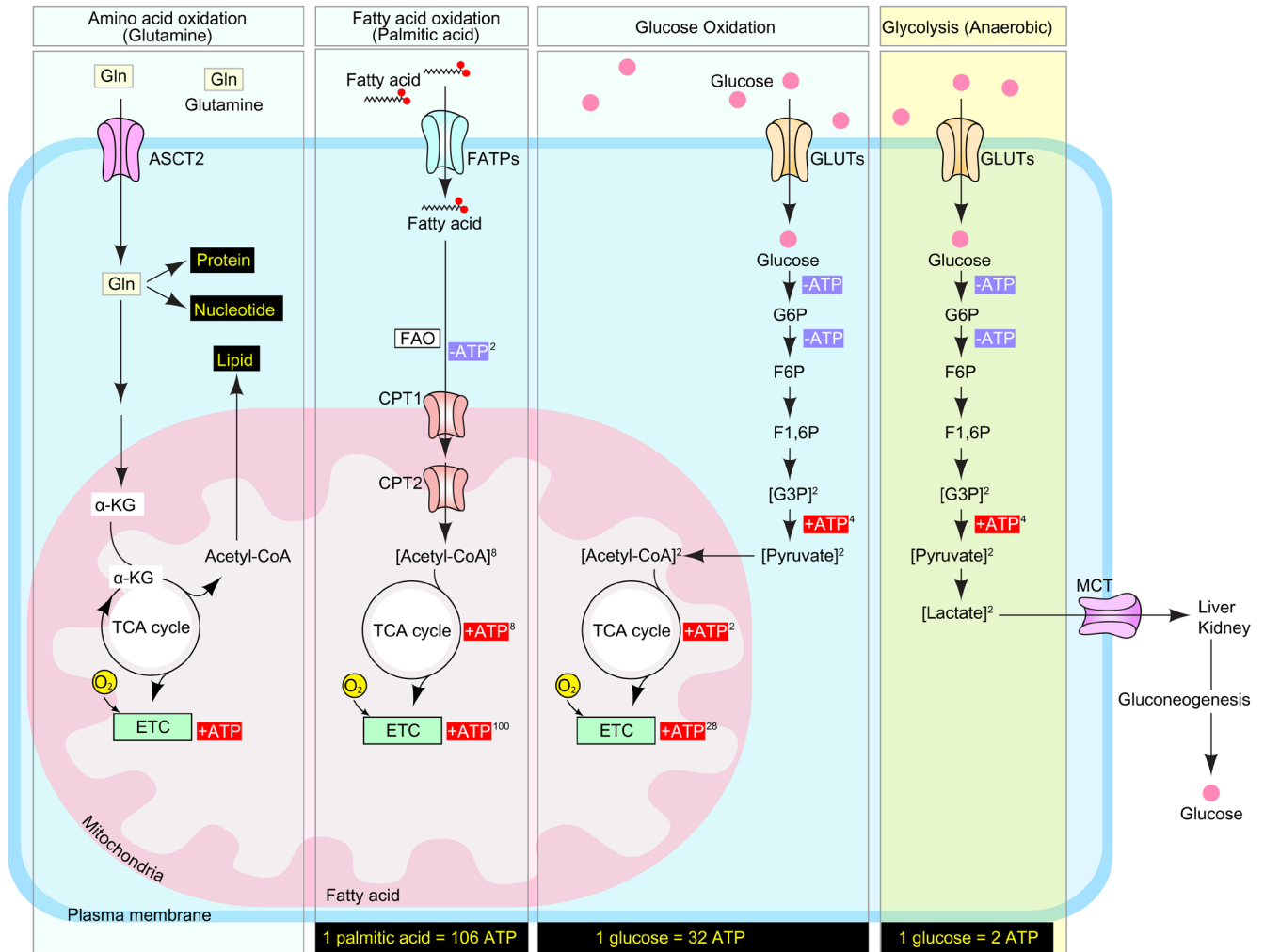
Glucose is the principal energy source in the endothelium<sup>23</sup>. Having entered the cell, it can undergo either oxidative phosphorylation, a catabolic process involving its conversion into carbon dioxide and water, or anaerobic glycolysis that leads to the production of lactate. When coupled with mitochondrial respiration, one molecule of glucose produces 32 ATP molecules upon complete oxidation<sup>24</sup> (Figure 1). Alternatively, anaerobic glycolysis, which takes place in the cytosol and does not involve the consumption of oxygen, leads to the production of two molecules of ATP during glucose-to-lactate conversion (Figure 1). Initially, it was thought that most normal, healthy cells predominantly employ glucose oxidation rather than glycolysis and that the latter is reserved for anaerobic conditions<sup>7,25–27</sup>. However, many types of cancer cells as well as certain normal cell types, including astrocytes<sup>27,28</sup>, fibroblasts<sup>29,30</sup>, activated T cells<sup>31</sup>, and pro-inflammatory macrophages<sup>31</sup>, depend predominantly on glycolysis for their energy demands.

More recently, several studies documented that blood vasculature ECs also rely primarily on anaerobic glycolysis for their energy generation<sup>32–34</sup>. Studies of glycolytic flux using radiolabeled glucose show that 99% of glucose is converted to lactate, which is a final product of glycolysis, and only a very small fraction (~0.04%) of pyruvate enters the mitochondria for glucose oxidation in rat coronary ECs<sup>32</sup>. LECs have also been reported to take up massive amounts of glucose compared with non-endothelial healthy cells and to use glycolysis as the primary source of ATP (~85%) with mitochondrial glucose oxidation almost completely inactive<sup>23</sup>. One potential explanation for this preference is that anaerobic glycolysis allows the production of energy at sites of cell locomotion (that is, lamellipodia and filopodia formation), thereby avoiding the need for ATP transport from the mitochondria<sup>35</sup>. Another is that interstitial tissue fluid which is absorbed into lymphatic vessels is the end product of somatic oxidative metabolism with low oxygen concentration<sup>19–22</sup>, and glycolysis maximizes the efficiency for ATP synthesis under their distinct nutritional environment.

## Fibroblast growth factor signaling and glucose metabolism

As its name indicates, fibroblast growth factors (FGFs) were first identified as regulators of fibroblast proliferation<sup>36,37</sup>. Over the past four decades since the first purification and identification of FGFs, it has become clear that FGF signaling is not limited to fibroblasts but occurs in most cell types. Furthermore, it is involved with numerous normal<sup>38</sup> and pathological conditions ranging from development<sup>39–41</sup> and tissue homeostasis to coronary artery disease<sup>42</sup>, scleroderma<sup>43</sup>, hypercholesterolemia<sup>44</sup>, pulmonary arterial hypertension<sup>45,46</sup>, and atherosclerosis<sup>47,48</sup>, among many others.

Recent studies demonstrated an important role played by the FGF signaling cascade in lymphatic development that, in many ways, is as critical and important as a better recognized contribution of vascular endothelial growth factor (VEGF) signaling<sup>49–53</sup>. FGF ligands initiate their signals through high-affinity

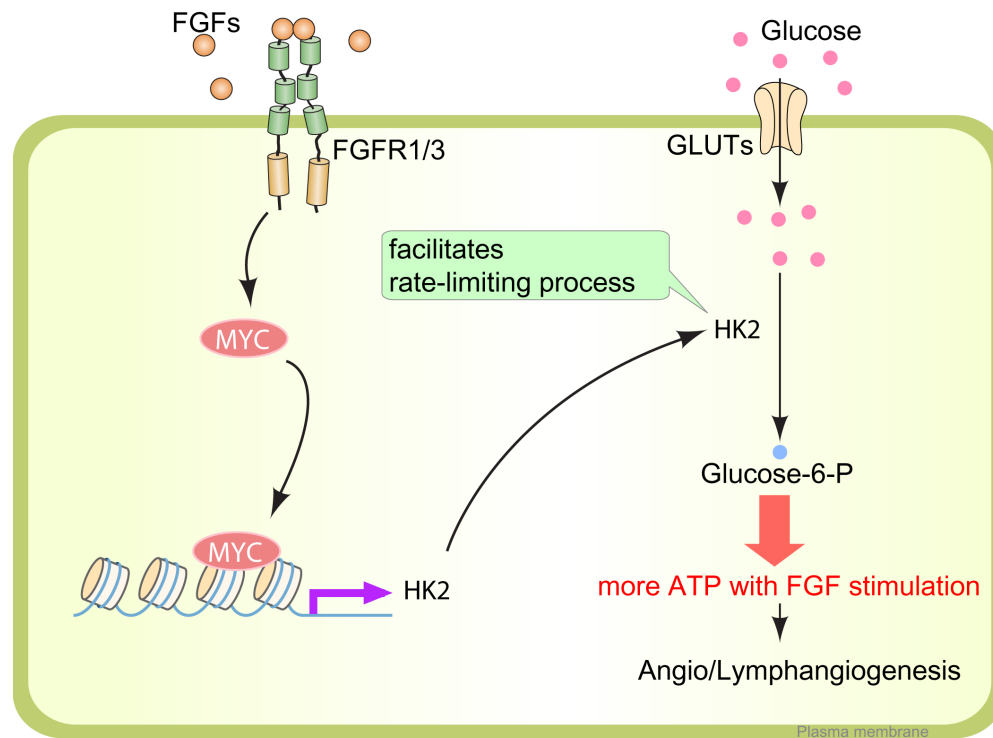


**Figure 1. Adenosine 5'-triphosphate generation in mammalian cells.** Amino acids (glutamine), fatty acids (palmitic acid), and carbohydrates (glucose) are the main sources of adenosine 5'-triphosphate (ATP) in the mammalian cell. Glutamine enters the mammalian cell through a glutamine transporter such as ASCT2. Glutamine serves as a precursor for the synthesis of lipids, nucleotides, proteins, and ATP. Fatty acids (palmitic acid) are transported into cytosol by FATPs (fatty acid transporters) and collapsed into acetyl-CoA through FAO (fatty acid oxidation). CPT1 (carnitine palmitoyltransferase I) on the mitochondrial outer membrane and CPT2 (carnitine palmitoyltransferase II) on the inner membrane cooperate for FAO. During glucose oxidation, glucose is transported across the cell membrane by GLUTs (glucose transporters) and catabolized into pyruvate. Pyruvate then enters the mitochondria and is converted into acetyl-CoA, which initiates the tricarboxylic acid (TCA) cycle to generate ATP. During anaerobic glycolysis, glucose is catabolized into pyruvate by using the same mechanism of glucose oxidation, but pyruvate turns into lactate and is finally exported into the bloodstream by monocarboxylate transporter (MCTs). During this metabolic process, complete oxidation of one molecule of nutrient generates 106 ATP (palmitic acid), 32 ATP (glucose; aerobic), and 2 ATP (glucose; anaerobic) molecules. ATP, adenosine 5'-triphosphate; ETC, electron transport chain.

tyrosine kinase receptors (FGFR1–4) and a number of co-receptors, including syndecan-4 and Klotho<sup>54</sup>. There is a high level of redundancy between the 22 FGFs and four FGFRs, leading to frequent compensatory effects. One example of that is the paucity of vascular developmental abnormalities in *Fgfr1* or *Fgfr3* single-knockout<sup>55</sup> and *Fgfr1/Fgfr2* double-knockout<sup>56</sup> mice. These phenotypes come to the fore, however, in mice with disrupted expression of both *Fgfr1* and *Fgfr3* genes (*Fgfr1<sup>fl/fl</sup>; Fgfr3<sup>-/-</sup>* with Prox1[BAC]-CreER<sup>T2</sup>)<sup>55</sup>. These animals show impairment of LEC migration and lymphatic vessel branching, resulting in significant edema, appearance of blood-filled lymphatics, and reduced dermal lymphatic development<sup>55</sup>.

RNA-seq analysis of gene expression in LECs before and after FGF2 or small interfering RNA (siRNA)-mediated disruption of FGF signaling showed that FGFs regulate not only proliferation and migration but also metabolic processes in LECs, glucose metabolism in particular<sup>55</sup>. Among the genes involved in glucose metabolism, *HK2* (hexokinase 2) was identified as the highest-ranking gene regulated by FGFs<sup>55</sup>.

Hexokinases (HKs) are rate-limiting enzymes catalyzing the first step of glucose breakdown, which is the ATP-dependent phosphorylation of glucose to glucose 6-phosphate (G6P) (Figure 2). Among their four isoforms (HK1–HK4), HK2 is a predominant



**Figure 2. Fibroblast growth factor signaling and lymphatic endothelial metabolism.** After fibroblast growth factor (FGF) ligand binding, FGFR1 and FGFR3 initiate a signaling cascade and induce MYC expression in LECs. MYC binds to the regulatory region of the *HK2* gene, a rate-limiting enzyme catalyzing the first step of glucose breakdown into glucose-6-phosphate. The FGFR1/3–MYC–HK2 axis is a crucial driver of glycolysis for LECs to generate adenosine 5'-triphosphate (ATP), which is needed for lymphangiogenesis. FGFR, fibroblast growth factor receptor; GLUT, glucose transporter; HK2, hexokinase 2; LEC, lymphatic endothelial cell.

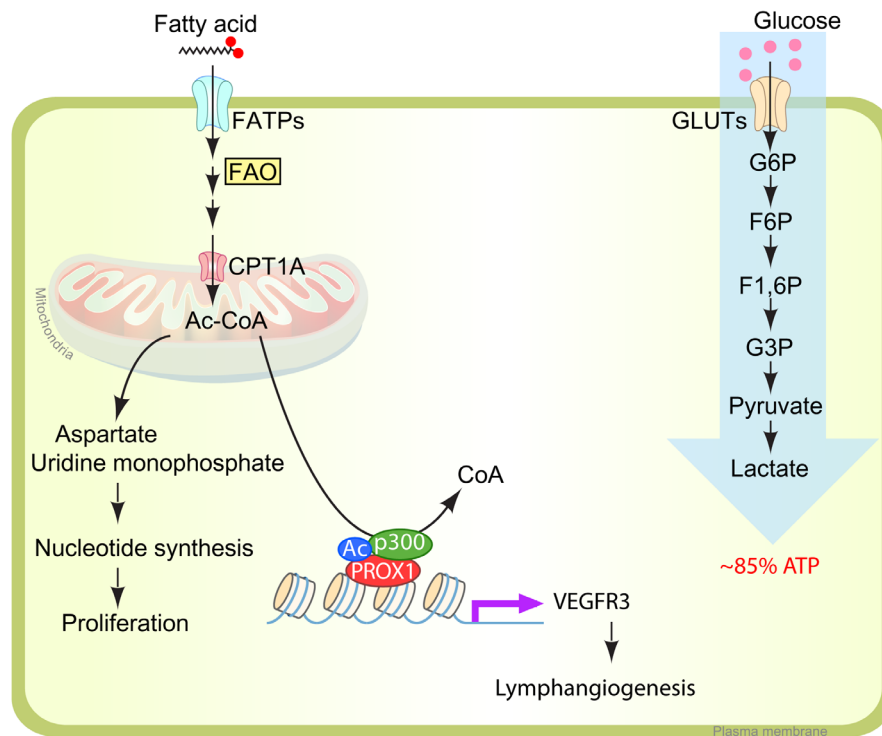
isoform in insulin-sensitive cells such as cardiomyocytes, skeletal muscle, and adipocytes; it is also upregulated in many types of tumors, and its expression is associated with enhanced glycolysis and tumor growth<sup>57</sup>. HK2 deletion in either all or lymphatic-only ECs in mice using, respectively, *Cdh5*(PAC)-CreER<sup>T2</sup> or *Prox1*(BAC)-CreER<sup>T2</sup> showed reduced glycolysis and retarded blood or lymphatic vascular development (or both) in various organs, including skin, cornea, and retina<sup>55</sup>, supporting the importance of HK2.

One of the factors that regulate HK2 expression is hypoxia. Under hypoxic conditions, hypoxia-inducible factor-1 alpha (HIF1 $\alpha$ ) expression is increased and, in turn, enhances the expression of the *HK2* gene through binding to the E-box sequence 5'-CACGTG-3' in the *HK2* promoter in cooperation with MYC transcription factors<sup>58,59</sup>. In cell types dependent on oxidative phosphorylation, this mechanism can result in a shift to anaerobic glycolysis, thereby allowing the cells to survive in hypoxic conditions<sup>58,59</sup>. Interestingly, activation of FGF signaling in LECs also enhances their glycolytic flux through MYC transcription factor expression<sup>55</sup> (Figure 2). Conversely, suppression of FGF signaling input, including FGFR1 siRNA treatment or *Fgfr1/Fgfr3* deletion in LECs, leads to reduced expression of MYC and HK2 and a suppression of glycolysis<sup>55</sup> (Figure 2).

The importance of this “metabolic” aspect of FGF signaling is emphasized by the fact that an LEC-specific deletion of HK2 leads to a very similar phenotype with *Fgfr1/Fgfr2* double-knockout mice<sup>55</sup>. That the metabolic process could be manipulated through external growth factor-initiated signaling in LECs is intriguing because it suggests that the metabolic pathway could be a therapeutic target for lymphangiogenesis-related diseases.

### Fatty acid oxidation in lymphatic endothelial cells

Fatty acids are an important nutrient source not only for energy generation but also for biomass synthesis necessary to support cell proliferation. Carbon and nitrogen derived from fatty acid oxidation (FAO) become the building blocks for nucleotide synthesis, which is necessary for DNA replication and transcription. Although in most cell types glucose and glutamine supply most of the carbon and nitrogen necessary to support cell growth and division<sup>25</sup>, recent studies demonstrated that in ECs fatty acid carbon, and not glucose, is primarily used to support RNA and DNA nucleotide synthesis<sup>60</sup> (Figure 3). Using radiolabeled palmitate, a 16-carbon saturated fatty acid, Schoors *et al.* showed that its carbon incorporates into aspartate (a nucleotide precursor) and uridine monophosphate (a precursor of pyrimidine nucleoside triphosphates and DNA) in human



**Figure 3. Metabolism on lymphatic endothelial cells.** In lymphatic endothelial cells (LECs), fatty acid is used primarily for nucleotide biosynthesis. During the tricarboxylic acid (TCA) cycle in mitochondria, acetyl-CoA provides the carbon skeletons for aspartate and uridine monophosphate. These intermediates are used in nucleotide synthesis in proliferating LECs. Acetyl-CoA catabolized from fatty acid is also used for histone acetylation of VEGFR3 promoter region with PROX1/P300 protein complex. (Left) The major source of ATP in LECs is glucose. (Right) Up to 85% of ATP is generated using glycolysis (anaerobic). ATP, adenosine 5'-triphosphate; CPT1A, carnitine palmitoyltransferase 1A; F1,6P, fructose 1,6-diphosphate; F6P, fructose-6-phosphate; FAO, fatty acid oxidation; FATP, fatty acid transporter; G3P, glucose 3-phosphate; G6P, glucose 6-phosphate; GLUT, glucose transporter; VEGFR3, vascular endothelial growth factor receptor 3.

umbilical vein ECs<sup>60</sup> (Figure 3). CPT1A (carnitine palmitoyltransferase 1A), an enzyme localized to the mitochondrial outer membrane, controls the translocation of fatty acids across the mitochondrial membrane and acts as the rate-limiting regulator of FAO. An endothelial-specific knockout of *Cpt1a* in mice (*Cpt1a*<sup>fl/fl</sup>; Cdh5[PAC]-CreER<sup>T2</sup>) displayed reduced proliferation in stalk ECs, while leading tip cells are intact<sup>60</sup>, suggesting that FAO stimulates vessel sprouting through EC proliferation. Analogous to blood ECs (BECs), LECs also use fatty acid as the principal source of carbon for nucleotide biosynthesis, but the FAO flux in LECs is even higher than in BECs while glycolytic flux is lower, implying that LECs use a metabolic pathway distinct from that of BECs<sup>61</sup>.

### Molecular signaling and fatty acid metabolism

A critical step in lymphangiogenesis is the specification of lymphatic endothelial fate. During embryonic development, around embryonic day 9.5, a small subset of anterior cardinal vein ECs begin expressing a lymphatic marker, Prox-1, which is driven by ERK-dependent activation of transcription factor Sox18 expression<sup>15,62</sup>. This leads to venous-to-endothelial cell fate transition and activation of expression of LEC-specific markers, including LYVE-1, PROX1, FGFR3, and VEGFR3<sup>62,63</sup>. PROX1-expressing

LECs migrate into the surrounding tissue to form primitive lymph sacs and lymphatic plexus<sup>15</sup>. PROX1 regulates the lymphangiogenic receptor tyrosine kinase VEGFR3 expression, which is responsible for LEC migration and proliferation. The absence of PROX1 expression results in the complete loss of the lymphatic system and decreased VEGFR3 expression in developmental lymphangiogenesis<sup>15</sup>.

In addition to the PROX1-mediated molecular signaling pathway, a recent study showed that PROX1 is involved with FAO metabolism for lymphangiogenesis. In PROX1-deficient cultured LECs, CPT1A expression and FAO flux are also inhibited, and this led to inhibition of proliferation. Consistent with these findings, LEC-specific *Cpt1* deletion in developmental mouse embryo (*Cpt1*<sup>fl/fl</sup> with Prox1[BAC]-CreER<sup>T2</sup>) also showed defective edema caused by impaired LEC proliferation, migration, and sprouting<sup>61</sup>. Interestingly, FAO inhibition through CPT1KD decreased VEGFR3 expression, which suggests that FAO is essential not only for fatty acid metabolism but also for maintaining LEC identity through transcriptional gene regulation. Mechanistically, overexpression of PROX1 upregulates CPT1A transcription, which increases the generation of acetyl-CoA through fatty acid  $\beta$ -oxidation<sup>61</sup> (Figure 3). Acetyl-CoA

is used for two different purposes on LECs. First, it provides a carbon source for nucleotide synthesis, which eventually leads to LEC proliferation<sup>61</sup>. Second, LEC uses acetyl-CoA for histone acetylation of VEGFR3 promoter region with PROX1 and p300 (histone acetyltransferase p300) protein complex<sup>61</sup> (Figure 3). Prox1 has also been shown to function as a metabolic transcriptional regulator in non-ECs. In liver cells, Prox1 interacts with ERR $\alpha$ /PGC-1 $\alpha$  complex, which plays a central role in the maintenance of energy homeostasis and inhibits its activity<sup>64</sup>. In colon cancer cells, Prox1 controls metabolic adaptation of these cells, promotes resistance to nutrient deprivation, and fuels metastatic outgrowth of tumors<sup>65</sup>. With a chip-on-chip assay with Prox1, Prox1 was shown to target genes highly enriched for processes linked to bile acid biosynthesis and histidine metabolism<sup>64</sup>. This suggests that metabolic regulation might be one of the major activities of Prox1.

VEGFR3 is a critical and indispensable regulator of lymphatic development and function. Its almost exclusive expression in LECs makes them respond to vascular endothelial growth factor-C (VEGF-C) for LEC proliferation, migration, and sprouting<sup>66</sup>. VEGFR3 expression is known to vary with developmental stage and pathological conditions. It is expressed in BECs during early embryogenesis, but later, VEGFR-3 expression becomes restricted to the LECs. Vegfr3 knockout mice die because of angiogenic defect around embryonic day 10.5, before the establishment of the lymphatic system<sup>67</sup>. Heterozygous functional null mutations in the Vegfr3 gene which inactivate the tyrosine kinase do not cause any defect in embryonic angiogenesis, but they have been linked to lymphedema<sup>68,69</sup>. Dynamic changes in the endogenous expression level of VEGFR3 indicate that VEGFR3 transcription is precisely regulated. VEGFR expression can be altered by numerous transcription factors, including SP1, SP3, ETSs, p300, PROX1, and E2F<sup>70-72</sup>, and by epigenetic modification of the regulatory sequences, including histone acetylation and CpG methylation<sup>72,73</sup>. Among the genes mentioned, ETSs, Prox1, and p300 are involved in histone acetylation of the *Vegfr3* gene, which likely plays a role in its transcriptional regulation<sup>70-72</sup>. This combination of events leads to

fatty acid-derived acetyl-CoA, which plays a role in histone acetylation on the VEGFR3 promoter and regulation of VEGFR3 expression. Intriguingly, supplementation of acetate (a precursor of acetyl-CoA) is able to rescue lymphangiogenesis induced by CPT1A inhibition, implying the potential of metabolites for use in the field of regenerative medicine<sup>61</sup>. Although FAO plays crucial roles during the lymphangiogenesis process, it is not yet clear why FAO serves as the main carbon source for nucleotide synthesis in LECs even though the lymph fluid provides abundant nutrients, including glucose and amino acids<sup>17,18</sup>, which are employed for biomass synthesis in other tissues and whether FAO-derived acetyl-CoA also serves for acetylation modification of other lymphatic genes or proteins.

### Perspective

In 1996, Joukov *et al.* purified and identified a cDNA that has VEGFR3 binding affinity and named it VEGF-C<sup>74</sup>. Over the past two decades since the identification of VEGF-C, several additional molecular pathways, including transcription factors, receptors, and mediators, have been shown to regulate lymphatic differentiation and lymphangiogenesis. In recent years, different lines of work have led to the conclusion not only that the molecular signals are important to control lymphangiogenesis but also that metabolism could be an alternative target. More detailed understanding of the metabolic pathway in LECs will open new avenues for developing new therapeutic targets for lymphangiogenesis-related diseases.

### Competing interests

The author(s) declared that they have no competing interests.

### Grant information

This work is supported by National Institutes of Health grants P01 HL107205, HL084619 and HL135582.

*The funders had no role in study design, data collection and analysis, decision to publish, or preparation of the manuscript.*

## References

- Pavlova NN, Thompson CB: **The Emerging Hallmarks of Cancer Metabolism.** *Cell Metab.* 2016; **23**(1): 27–47.  
[PubMed Abstract](#) | [Publisher Full Text](#) | [Free Full Text](#)
- Martinez-Outschoorn UE, Peiris-Pagés M, Pestell RG, *et al.*: **Cancer metabolism: a therapeutic perspective.** *Nat Rev Clin Oncol.* 2017; **14**(2): 113.  
[PubMed Abstract](#) | [Publisher Full Text](#)
- Gruber J, Schaffer S, Halliwell B: **The mitochondrial free radical theory of ageing—where do we stand?** *Front Biosci.* 2008; **13**: 6554–79.  
[PubMed Abstract](#) | [Publisher Full Text](#)
- Potente M, Carmeliet P: **The Link Between Angiogenesis and Endothelial Metabolism.** *Annu Rev Physiol.* 2017; **79**: 43–66.  
[PubMed Abstract](#) | [Publisher Full Text](#)
- Mergenthaler P, Lindauer U, Dienel GA, *et al.*: **Sugar for the brain: the role of glucose in physiological and pathological brain function.** *Trends Neurosci.* 2013; **36**(10): 587–97.  
[PubMed Abstract](#) | [Publisher Full Text](#) | [Free Full Text](#)
- Rohlenova K, Veys K, Miranda-Santos I, *et al.*: **Endothelial Cell Metabolism in Health and Disease.** *Trends Cell Biol.* 2018; **28**(3): 224–36.  
[PubMed Abstract](#) | [Publisher Full Text](#)
- DeBerardinis RJ, Lum JJ, Hatzivassiliou G, *et al.*: **The biology of cancer: metabolic reprogramming fuels cell growth and proliferation.** *Cell Metab.* 2008; **7**(1): 11–20.  
[PubMed Abstract](#) | [Publisher Full Text](#)
- Tammela T, Alitalo K: **Lymphangiogenesis: Molecular mechanisms and future promise.** *Cell.* 2010; **140**(4): 460–76.  
[PubMed Abstract](#) | [Publisher Full Text](#)
- Wigle JT, Harvey N, Detmar M, *et al.*: **An essential role for Prox1 in the induction of the lymphatic endothelial cell phenotype.** *EMBO J.* 2002; **21**(7): 1505–13.  
[PubMed Abstract](#) | [Publisher Full Text](#) | [Free Full Text](#)
- Yaniv K, Isogai S, Castranova D, *et al.*: **Live imaging of lymphatic development in the zebrafish.** *Nat Med.* 2006; **12**(6): 711–6.  
[PubMed Abstract](#) | [Publisher Full Text](#)



11. **F** Martinez-Corral I, Ulvmar MH, Stanczuk L, *et al.*: **Nonvenous origin of dermal lymphatic vasculature.** *Circ Res.* 2015; **116**(10): 1649–54.  
[PubMed Abstract](#) | [Publisher Full Text](#) | [F1000 Recommendation](#)
12. **F** Klotz L, Norman S, Vieira JM, *et al.*: **Cardiac lymphatics are heterogeneous in origin and respond to injury.** *Nature.* 2015; **522**(7554): 62–7.  
[PubMed Abstract](#) | [Publisher Full Text](#) | [Free Full Text](#) | [F1000 Recommendation](#)
13. **F** Stanczuk L, Martinez-Corral I, Ulvmar MH, *et al.*: **cKit Lineage Hemogenic Endothelium-Derived Cells Contribute to Mesenteric Lymphatic Vessels.** *Cell Rep.* 2015; **10**(10): 1708–1721. pii: S2211-1247(15)00172-2.  
[PubMed Abstract](#) | [Publisher Full Text](#) | [F1000 Recommendation](#)
14. **F** Ulvmar MH, Mäkinen T: **Heterogeneity in the lymphatic vascular system and its origin.** *Cardiovasc Res.* 2016; **111**(4): 310–21.  
[PubMed Abstract](#) | [Publisher Full Text](#) | [Free Full Text](#) | [F1000 Recommendation](#)
15. Wigle JT, Oliver G: **Prox1 function is required for the development of the murine lymphatic system.** *Cell.* 1999; **98**(6): 769–78.  
[PubMed Abstract](#) | [Publisher Full Text](#)
16. Randolph GJ, Angeli V, Swartz MA: **Dendritic-cell trafficking to lymph nodes through lymphatic vessels.** *Nat Rev Immunol.* 2005; **5**(8): 617–28.  
[PubMed Abstract](#) | [Publisher Full Text](#)
17. Andrades P, Prado A: **Composition of postabdominoplasty seroma.** *Aesthetic Plast Surg.* 2007; **31**(5): 514–8.  
[PubMed Abstract](#) | [Publisher Full Text](#)
18. McCaul JA, Aslaam A, Spooner RJ, *et al.*: **Aetiology of seroma formation in patients undergoing surgery for breast cancer.** *Breast.* 2000; **9**(3): 144–8.  
[PubMed Abstract](#) | [Publisher Full Text](#)
19. Witte CL, Clauss RH, Dumont AE: **Respiratory gas tensions of thoracic duct lymph: an index of gas exchange in splanchnic tissues.** *Ann Surg.* 1967; **166**(2): 254–62.  
[PubMed Abstract](#) | [Free Full Text](#)
20. Berman IR, Moseley RV, Lamborn PB, *et al.*: **Thoracic duct lymph in shock: gas exchange, acid base balance and lysosomal enzymes in hemorrhagic and endotoxin shock.** *Ann Surg.* 1969; **169**(2): 202–9.  
[PubMed Abstract](#) | [Free Full Text](#)
21. Takaori M, Tosaki Y: **Changes in pO<sub>2</sub> and flow of thoracic duct lymph in acute extracellular fluid depletion in dogs.** *J Surg Res.* 1978; **25**(5): 439–44.  
[PubMed Abstract](#) | [Publisher Full Text](#)
22. Barankay T, Baumgärtl H, Lübbers DW, *et al.*: **Oxygen pressure in small lymphatics.** *Plügers Arch.* 1976; **366**(1): 53–9.  
[PubMed Abstract](#) | [Publisher Full Text](#)
23. **F** De Bock K, Georgiadou M, Schoors S, *et al.*: **Role of PFKFB3-driven glycolysis in vessel sprouting.** *Cell.* 2013; **154**(3): 651–63.  
[PubMed Abstract](#) | [Publisher Full Text](#) | [F1000 Recommendation](#)
24. Arumugam S, Sreedhar R, Thandavarayan RA, *et al.*: **Targeting fatty acid metabolism in heart failure: is it a suitable therapeutic approach?** *Drug Discov Today.* 2016; **21**(6): 1003–8.  
[PubMed Abstract](#) | [Publisher Full Text](#)
25. Vander Heiden MG, Cantley LC, Thompson CB: **Understanding the Warburg effect: the metabolic requirements of cell proliferation.** *Science.* 2009; **324**(5930): 1029–33.  
[PubMed Abstract](#) | [Publisher Full Text](#) | [Free Full Text](#)
26. Burns JS, Manda G: **Metabolic Pathways of the Warburg Effect in Health and Disease: Perspectives of Choice, Chain or Chance.** *Int J Mol Sci.* 2017; **18**(12): Pii: E2755.  
[PubMed Abstract](#) | [Publisher Full Text](#) | [Free Full Text](#)
27. **F** Magistretti PJ, Allaman I: **A cellular perspective on brain energy metabolism and functional imaging.** *Neuron.* 2015; **86**(18): 883–901.  
[PubMed Abstract](#) | [Publisher Full Text](#) | [F1000 Recommendation](#)
28. Ward PS, Thompson CB: **Metabolic reprogramming: a cancer hallmark even warburg did not anticipate.** *Cancer Cell.* 2012; **21**(3): 297–308.  
[PubMed Abstract](#) | [Publisher Full Text](#) | [Free Full Text](#)
29. Cheng HH, Wang KH, Chu LY, *et al.*: **Quiescent and proliferative fibroblasts exhibit differential p300 HAT activation through control of 5-methoxytryptophan production.** *PLoS One.* 2014; **9**(2): e88507.  
[PubMed Abstract](#) | [Publisher Full Text](#) | [Free Full Text](#)
30. **F** Lemons JM, Feng XJ, Bennett BD, *et al.*: **Quiescent fibroblasts exhibit high metabolic activity.** *PLoS Biol.* 2010; **8**(10): e1000514.  
[PubMed Abstract](#) | [Publisher Full Text](#) | [Free Full Text](#) | [F1000 Recommendation](#)
31. Ghesquière B, Wong BW, Kuchnio A, *et al.*: **Metabolism of stromal and immune cells in health and disease.** *Nature.* 2014; **511**(7508): 167–76.  
[PubMed Abstract](#) | [Publisher Full Text](#)
32. Krützfeldt A, Spahr R, Mertens S, *et al.*: **Metabolism of exogenous substrates by coronary endothelial cells in culture.** *J Mol Cell Cardiol.* 1990; **22**(12): 1393–404.  
[PubMed Abstract](#) | [Publisher Full Text](#)
33. Culic O, Gruwel ML, Schrader J: **Energy turnover of vascular endothelial cells.** *Am J Physiol.* 1997; **273**(1 Pt 1): C205–13.  
[PubMed Abstract](#) | [Publisher Full Text](#)
34. Chung SJ, Lee SH, Lee YJ, *et al.*: **Pyruvate protection against endothelial cytotoxicity induced by blockade of glucose uptake.** *J Biochem Mol Biol.* 2004; **37**(2): 239–45.  
[PubMed Abstract](#) | [Publisher Full Text](#)
35. **F** Teuwen LA, Geldhof V, Carmeliet P: **How glucose, glutamine and fatty acid metabolism shape blood and lymph vessel development.** *Dev Biol.* 2017; pii: S0012-1606(17)30495-5.  
[PubMed Abstract](#) | [Publisher Full Text](#) | [F1000 Recommendation](#)
36. Arnelin HA: **Pituitary extracts and steroid hormones in the control of 3T3 cell growth.** *Proc Natl Acad Sci U S A.* 1973; **70**(9): 2702–6.  
[PubMed Abstract](#) | [Publisher Full Text](#) | [Free Full Text](#)
37. Gospodarowicz D: **Localisation of a fibroblast growth factor and its effect alone and with hydrocortisone on 3T3 cell growth.** *Nature.* 1974; **249**(453): 123–7.  
[PubMed Abstract](#) | [Publisher Full Text](#)
38. Li M, Yi X, Ma L, *et al.*: **Hepatocyte growth factor and basic fibroblast growth factor regulate atrial fibrosis in patients with atrial fibrillation and rheumatic heart disease via the mitogen-activated protein kinase signaling pathway.** *Exp Ther Med.* 2013; **6**(5): 1121–6.  
[PubMed Abstract](#) | [Publisher Full Text](#) | [Free Full Text](#)
39. Murakami M, Simons M: **Fibroblast growth factor regulation of neovascularization.** *Curr Opin Hematol.* 2008; **15**(3): 215–20.  
[PubMed Abstract](#) | [Publisher Full Text](#) | [Free Full Text](#)
40. Tomanek RJ, Christensen LP, Simons M, *et al.*: **Embryonic coronary vasculogenesis and angiogenesis are regulated by interactions between multiple FGFs and VEGF and are influenced by mesenchymal stem cells.** *Dev Dyn.* 2010; **239**(12): 3182–91.  
[PubMed Abstract](#) | [Publisher Full Text](#) | [Free Full Text](#)
41. Murakami M, Nguyen LT, Hatanaka K, *et al.*: **FGF-dependent regulation of VEGF receptor 2 expression in mice.** *J Clin Invest.* 2011; **121**(7): 2668–78.  
[PubMed Abstract](#) | [Publisher Full Text](#) | [Free Full Text](#)
42. Simons M, Annex BH, Laham RJ, *et al.*: **Pharmacological treatment of coronary artery disease with recombinant fibroblast growth factor-2: double-blind, randomized, controlled clinical trial.** *Circulation.* 2002; **105**(7): 788–93.  
[PubMed Abstract](#) | [Publisher Full Text](#)
43. Hummers LK, Hall A, Wigley FM, *et al.*: **Abnormalities in the regulators of angiogenesis in patients with scleroderma.** *J Rheumatol.* 2009; **36**(3): 576–82.  
[PubMed Abstract](#) | [Publisher Full Text](#) | [Free Full Text](#)
44. Tirziu D, Moodie KL, Zhuang ZW, *et al.*: **Delayed arteriogenesis in hypercholesterolemic mice.** *Circulation.* 2005; **112**(16): 2501–9.  
[PubMed Abstract](#) | [Publisher Full Text](#)
45. Eto K: **FGF-21, a newcomer in the field of hypertension research.** *J Hum Hypertens.* 2013; **27**(6): 343–4.  
[PubMed Abstract](#) | [Publisher Full Text](#)
46. Kim J, Kang Y, Kojima Y, *et al.*: **An endothelial apelin-FGF link mediated by miR-424 and miR-503 is disrupted in pulmonary arterial hypertension.** *Nat Med.* 2013; **19**(1): 74–82.  
[PubMed Abstract](#) | [Publisher Full Text](#) | [Free Full Text](#)
47. Chen PY, Qin L, Baeyens N, *et al.*: **Endothelial-to-mesenchymal transition drives atherosclerosis progression.** *J Clin Invest.* 2015; **125**(12): 4514–28.  
[PubMed Abstract](#) | [Publisher Full Text](#) | [Free Full Text](#)
48. Chen PY, Qin L, Li G, *et al.*: **Smooth muscle FGF/TGF $\beta$  cross talk regulates atherosclerosis progression.** *EMBO Mol Med.* 2016; **8**(7): 712–28.  
[PubMed Abstract](#) | [Publisher Full Text](#) | [Free Full Text](#)
49. Kubo H, Cao R, Brakenhielm E, *et al.*: **Blockade of vascular endothelial growth factor receptor-3 signaling inhibits fibroblast growth factor-2-induced lymphangiogenesis in mouse cornea.** *Proc Natl Acad Sci U S A.* 2002; **99**(13): 8868–73.  
[PubMed Abstract](#) | [Publisher Full Text](#) | [Free Full Text](#)
50. Chang LK, Garcia-Cardena G, Farnego F, *et al.*: **Dose-dependent response of FGF-2 for lymphangiogenesis.** *Proc Natl Acad Sci U S A.* 2004; **101**(32): 11658–63.  
[PubMed Abstract](#) | [Publisher Full Text](#) | [Free Full Text](#)
51. Shin JW, Min M, Larriue-Lahargue F, *et al.*: **Prox1 promotes lineage-specific expression of fibroblast growth factor (FGF) receptor-3 in lymphatic endothelium: a role for FGF signaling in lymphangiogenesis.** *Mol Biol Cell.* 2006; **17**(2): 576–84.  
[PubMed Abstract](#) | [Publisher Full Text](#) | [Free Full Text](#)
52. Cao R, Ji H, Feng N, *et al.*: **Collaborative interplay between FGF-2 and VEGF-C promotes lymphangiogenesis and metastasis.** *Proc Natl Acad Sci U S A.* 2012; **109**(39): 15894–9.  
[PubMed Abstract](#) | [Publisher Full Text](#) | [Free Full Text](#)
53. Larriue-Lahargue F, Welm AL, Boucheccareilh M, *et al.*: **Block of Fibroblast Growth Factor receptor signaling inhibits tumor growth, lymphangiogenesis, and metastasis.** *PLoS One.* 2012; **7**(6): e39540.  
[PubMed Abstract](#) | [Publisher Full Text](#) | [Free Full Text](#)
54. Cotton LM, O'Bryan MK, Hinton BT: **Cellular signaling by fibroblast growth factors (FGFs) and their receptors (FGFRs) in male reproduction.** *Endocr Rev.* 2008; **29**: 193–216.  
[PubMed Abstract](#) | [Publisher Full Text](#) | [Free Full Text](#)
55. Yu P, Wilhelm K, Dubrac A, *et al.*: **FGF-dependent metabolic control of vascular development.** *Nature.* 2017; **545**(7653): 224–8.  
[PubMed Abstract](#) | [Publisher Full Text](#) | [Free Full Text](#)
56. **F** Oladipupo SS, Smith C, Santeford A, *et al.*: **Endothelial cell FGF signaling is required for injury response but not for vascular homeostasis.** *Proc Natl Acad Sci U S A.* 2014; **111**(37): 13379–84.  
[PubMed Abstract](#) | [Publisher Full Text](#) | [Free Full Text](#) | [F1000 Recommendation](#)
57. Wolf A, Agnihotri S, Micallef J, *et al.*: **Hexokinase 2 is a key mediator of aerobic glycolysis and promotes tumor growth in human glioblastoma multiforme.** *J Exp Med.* 2011; **208**(2): 313–26.  
[PubMed Abstract](#) | [Publisher Full Text](#) | [Free Full Text](#)



58. Mathupala SP, Rempel A, Pedersen PL: **Glucose catabolism in cancer cells: identification and characterization of a marked activation response of the type II hexokinase gene to hypoxic conditions.** *J Biol Chem.* 2001; **276**(46): 43407–12. [PubMed Abstract](#) | [Publisher Full Text](#)
59. Kim JW, Gao P, Liu YC, *et al.*: **Hypoxia-inducible factor 1 and dysregulated c-Myc cooperatively induce vascular endothelial growth factor and metabolic switches hexokinase 2 and pyruvate dehydrogenase kinase 1.** *Mol Cell Biol.* 2007; **27**(21): 7381–93. [PubMed Abstract](#) | [Publisher Full Text](#) | [Free Full Text](#)
60. **F** Schoors S, Bruning U, Missiaen R, *et al.*: **Fatty acid carbon is essential for dNTP synthesis in endothelial cells.** *Nature.* 2015; **520**(7546): 192–7. [PubMed Abstract](#) | [Publisher Full Text](#) | [Free Full Text](#) | [F1000 Recommendation](#)
61. **F** Wong BW, Wang X, Zecchin A, *et al.*: **The role of fatty acid  $\beta$ -oxidation in lymphangiogenesis.** *Nature.* 2017; **542**(7639): 49–54. [PubMed Abstract](#) | [Publisher Full Text](#) | [F1000 Recommendation](#)
62. Deng Y, Atri D, Eichmann A, *et al.*: **Endothelial ERK signaling controls lymphatic fate specification.** *J Clin Invest.* 2013; **123**(3): 1202–15. [PubMed Abstract](#) | [Publisher Full Text](#) | [Free Full Text](#)
63. Oliver G, Srinivasan RS: **Endothelial cell plasticity: how to become and remain a lymphatic endothelial cell.** *Development.* 2010; **137**(3): 363–72. [PubMed Abstract](#) | [Publisher Full Text](#) | [Free Full Text](#)
64. **F** Charest-Marcotte A, Dufour CR, Wilson BJ, *et al.*: **The homeobox protein Prox1 is a negative modulator of ERR{alpha}/PGC-1{alpha} bioenergetic functions.** *Genes Dev.* 2010; **24**(6): 537–42. [PubMed Abstract](#) | [Publisher Full Text](#) | [Free Full Text](#) | [F1000 Recommendation](#)
65. **F** Ragusa S, Cheng J, Ivanov KI, *et al.*: **PROX1 promotes metabolic adaptation and fuels outgrowth of Wnt<sup>high</sup> metastatic colon cancer cells.** *Cell Rep.* 2014; **8**(6): 1957–73. [PubMed Abstract](#) | [Publisher Full Text](#) | [F1000 Recommendation](#)
66. Haiko P, Makinen T, Keskitalo S, *et al.*: **Deletion of vascular endothelial growth factor C (VEGF-C) and VEGF-D is not equivalent to VEGF receptor 3 deletion in mouse embryos.** *Mol Cell Biol.* 2008; **28**(15): 4843–50. [PubMed Abstract](#) | [Publisher Full Text](#) | [Free Full Text](#)
67. Dumont DJ, Jussila L, Taipale J, *et al.*: **Cardiovascular failure in mouse embryos deficient in VEGF receptor-3.** *Science.* 1998; **282**(5390): 946–9. [PubMed Abstract](#) | [Publisher Full Text](#)
68. Karkkainen MJ, Ferrell RE, Lawrence EC, *et al.*: **Missense mutations interfere with VEGFR-3 signalling in primary lymphoedema.** *Nat Genet.* 2000; **25**(2): 153–9. [PubMed Abstract](#) | [Publisher Full Text](#)
69. Karkkainen MJ, Saaristo A, Jussila L, *et al.*: **A model for gene therapy of human hereditary lymphedema.** *Proc Natl Acad Sci U S A.* 2001; **98**(22): 12677–82. [PubMed Abstract](#) | [Publisher Full Text](#) | [Free Full Text](#)
70. Weijts BG, van Impel A, Schulte-Merker S, *et al.*: **Atypical E2fs control lymphangiogenesis through transcriptional regulation of Ccbe1 and Flt4.** *PLoS One.* 2013; **8**(9): e73693. [PubMed Abstract](#) | [Publisher Full Text](#) | [Free Full Text](#)
71. Gutierrez KD, Morris VA, Wu D, *et al.*: **Ets-1 is required for the activation of VEGFR3 during latent Kaposi's sarcoma-associated herpesvirus infection of endothelial cells.** *J Virol.* 2013; **87**(12): 6758–68. [PubMed Abstract](#) | [Publisher Full Text](#) | [Free Full Text](#)
72. Hertel J, Hirche C, Wissmann C, *et al.*: **Transcription of the vascular endothelial growth factor receptor-3 (VEGFR3) gene is regulated by the zinc finger proteins Sp1 and Sp3 and is under epigenetic control: transcription of vascular endothelial growth factor receptor 3.** *Cell Oncol (Dordr).* 2014; **37**(2): 131–45. [PubMed Abstract](#) | [Publisher Full Text](#)
73. Ichise T, Yoshida N, Ichise H: **Ras/MAPK signaling modulates VEGFR-3 expression through Ets-mediated p300 recruitment and histone acetylation on the Vegfr3 gene in lymphatic endothelial cells.** *PLoS One.* 2012; **7**(12): e51639. [PubMed Abstract](#) | [Publisher Full Text](#) | [Free Full Text](#)
74. Joukov V, Pajusola K, Kaipainen A, *et al.*: **A novel vascular endothelial growth factor, VEGF-C, is a ligand for the Flt4 (VEGFR-3) and KDR (VEGFR-2) receptor tyrosine kinases.** *EMBO J.* 1996; **15**(2): 1751. [PubMed Abstract](#) | [Free Full Text](#)

# Open Peer Review

Current Peer Review Status: 

---

## Editorial Note on the Review Process

**F1000 Faculty Reviews** are written by members of the prestigious **F1000 Faculty**. They are commissioned and are peer reviewed before publication to ensure that the final, published version is comprehensive and accessible. The reviewers who approved the final version are listed with their names and affiliations.

---

## The reviewers who approved this article are:

### Version 1

- 1 Joseph M Rutkowski**  
Texas A&M University Health Science Center, College Station, Department of Medical Physiology, Texas, USA  
**Competing Interests:** No competing interests were disclosed.
- 2 Sathish R Srinivasan**  
Oklahoma Medical Research Foundation, Cardiovascular Biology Research Program, Oklahoma City, OK, USA  
**Competing Interests:** No competing interests were disclosed.
- 3 Young-Kwon Hong**  
Department of Surgery, Keck School of Medicine, University of Southern California, Los Angeles, CA, USA  
**Competing Interests:** No competing interests were disclosed.

The benefits of publishing with F1000Research:

- Your article is published within days, with no editorial bias
- You can publish traditional articles, null/negative results, case reports, data notes and more
- The peer review process is transparent and collaborative
- Your article is indexed in PubMed after passing peer review
- Dedicated customer support at every stage

For pre-submission enquiries, contact [research@f1000.com](mailto:research@f1000.com)

**F1000Research**