



# The influence of sample distribution on growth model output for a highly-exploited marine fish, the Gulf Corvina (*Cynoscion othonopterus*)

Derek G. Bolser<sup>1</sup>, Arnaud Grüss<sup>2</sup>, Mark A. Lopez<sup>1</sup>, Erin M. Reed<sup>1,3</sup>, Ismael Mascareñas-Osorio<sup>4</sup> and Brad E. Erisman<sup>1</sup>

<sup>1</sup> Marine Science Institute, University of Texas at Austin, Port Aransas, TX, United States of America

<sup>2</sup> School of Aquatic and Fishery Sciences, University of Washington, Seattle, WA, United States of America

<sup>3</sup> Joint Institute for Marine and Atmospheric Research, University of Hawaii and NOAA Fisheries, Pacific Islands Fisheries Science Center, Honolulu, HI, United States of America

<sup>4</sup> Centro para la Biodiversidad Marina y la Conservación, La Paz, Mexico

## ABSTRACT

Estimating the growth of fishes is critical to understanding their life history and conducting fisheries assessments. It is imperative to sufficiently sample each size and age class of fishes to construct models that accurately reflect biological growth patterns, but this may be a challenging endeavor for highly-exploited species in which older fish are rare. Here, we use the Gulf Corvina (*Cynoscion othonopterus*), a vulnerable marine fish that has been persistently overfished for two decades, as a model species to compare the performance of several growth models. We fit the von Bertalanffy, Gompertz, logistic, Schnute, and Schnute–Richards growth models to length-at-age data by nonlinear least squares regression and used simple indicators to reveal biased data and ensure our results were biologically feasible. We then explored the consequences of selecting a biased growth model with a per-recruit model that estimated female spawning-stock-biomass-per-recruit and yield-per-recruit. Based on statistics alone, we found that the Schnute–Richards model described our data best. However, it was evident that our data were biased by a bimodal distribution of samples and underrepresentation of large, old individuals, and we found the Schnute–Richards model output to be biologically implausible. By simulating an equal distribution of samples across all age classes, we found that sample distribution distinctly influenced model output for all growth models tested. Consequently, we determined that the growth pattern of the Gulf Corvina was best described by the von Bertalanffy growth model, which was the most robust to biased data, comparable across studies, and statistically comparable to the Schnute–Richards model. Growth model selection had important consequences for assessment, as the per-recruit model employing the Schnute–Richards model fit to raw data predicted the stock to be in a much healthier state than per-recruit models employing other growth models. Our results serve as a reminder of the importance of complete sampling of all size and age classes when possible and transparent identification of biased data when complete sampling is not possible.

Submitted 13 April 2018  
Accepted 13 August 2018  
Published 17 September 2018

Corresponding author  
Brad E. Erisman,  
berisman@utexas.edu

Academic editor  
María Ángeles Esteban

Additional Information and  
Declarations can be found on  
page 19

DOI 10.7717/peerj.5582

© Copyright  
2018 Bolser et al.

Distributed under  
Creative Commons CC-BY 4.0

OPEN ACCESS

**Subjects** Aquaculture, Fisheries and Fish Science, Conservation Biology, Marine Biology, Statistics

**Keywords** Gulf of California, Gulf Corvina, Growth modelling, Fish growth, Data-poor fisheries, Highly-exploited, Vulnerable

## INTRODUCTION

Age and size data inform estimates of life history parameters that are crucial to fisheries stock assessments. In early assessments such as Beverton and Holt's yield-per-recruit model (1957), size at age was critical for estimating reproductive output and thus the sustainability of fisheries. In today's age-structured stock assessments, size at age is used to convert from biomass to number of fish, determine selectivity, and calculate expected length compositions (Francis, 2016). Similarly, size (i.e., length or weight) at age is used in size-structured stock assessment models to inform transitions between size bins and determine length composition (Punt, Haddon & McGarvey, 2016). Accurately representing the relationship between size and age is particularly important for vulnerable fish and in data-poor fisheries, in which life-history parameters and population structure often drive stock assessments and management decisions (Dulvy et al., 2004; Froese, 2004; Honey, Moxley & Fujita, 2010; Hordyk et al., 2016). Specifically, these types of assessments rely heavily on age-length data to confer insights on vulnerability and overfishing (Erisman et al., 2014).

When modelling the relationship between age and size for the purposes of assessment, and for any purpose, each age and size class must be sufficiently represented to generate growth parameter estimates that reflect biological growth (Cailliet et al., 1986; Cailliet & Tanaka, 1990; Francis & Francis, 1992; Cailliet & Goldman, 2004). It is important to make the distinction between this type of sampling and sampling to reflect population structure, which should not be the goal of age and growth studies as this reflects bias due to the relative scarcity of large and old individuals. Sufficiently representing each size and age class may be especially difficult in highly-exploited species, as exploitation alters the population structure of fishes by preferentially selecting for large and old fish individuals (Mason, 1998; Berkeley et al., 2004). The ramifications for failing to acknowledge selection are clear, as length-selective fishing mortality distorts growth curves (Walker et al., 1998). Further, the lack of representation of large and old individuals could result in underestimation of lifespan and longevity, which makes fishery management measures less effective (Campana, 2001; Cailliet & Andrews, 2008; Goldman et al., 2012). Large and old fish drive estimates of the maximum average length parameter  $L_{\infty}$ , and without them,  $L_{\infty}$  is underestimated and the growth rate (typically denoted by  $K$ ) is overestimated. The underestimation of  $L_{\infty}$  and the overestimation of  $K$  lead to the assumptions of a shorter generation time and less mortality, and thus more resiliency to high levels of fishing pressure (Campana, 2001; Goldman et al., 2012; Harry, 2017). The  $L_{\infty}$  term is particularly important when growth models are incorporated into stock assessment (Wells et al., 2013). This problem may also occur in growth modelling for vulnerable fish or in data-poor fisheries, where lack of representation of each age and size class due to sampling constraints or the scarcity of individuals may similarly affect parameter estimates. Fishery dependent data are often the

only data available for growth modelling, which may be acceptable only as long as the inherent biases and limitations are acknowledged.

Several models have been developed to quantify the relationship between age and size, with body length being the most common metric of size. Typically, asymptotic growth models are used to quantify this relationship. These models describe fast growth in the earliest years of life and slower growth in later years. Despite some criticism (Roff, 1980; Czarnole'ski & Kozłowski, 1998), the most widely used is the von Bertalanffy growth model (Chen, Jackson & Harvey, 1992; Kimura, 2008). Rooted in bioenergetics, this model is intended to give a biologically relevant representation of how catabolic and anabolic processes work within a fish to change growth over the lifespan of fishes (Von Bertalanffy, 1938; Pauly, 2010). Over the years, there have been many re-parameterizations of the von Bertalanffy model with incorporation of growth-influencing factors and applications to a variety of situations (Gallucci II & Quinn, 1979; Ratkowsky, 1986; Helser & Lai, 2004; Kimura, 2008; Brunel & Dickey-Collas, 2010; Van Poorten & Walters, 2016), but the original parametrization is still the most commonly used (Lorenzen, 2016). Other asymptotic growth models are commonly used in fisheries, such as the Gompertz growth model (Gompertz, 1825) and the logistic growth model (Ricker, 1975).

In recent years, fish growth models have moved from a foundation in bioenergetics to being more statistically driven (Van Poorten & Walters, 2016). These models are inherently more flexible, allowing them to capture subtleties in growth patterns that may not be captured by the more inflexible growth models. The Schnute model (Schnute, 1981), for example, has four curve families that the model may assume based on which types of data the model is fit to and what other functions are incorporated into the framework. Another flexible growth model, the Schnute–Richards model (Schnute & Richards, 1990), can describe biphasic growth among several other forms. By design, the Schnute–Richards model may be equivalent to the other growth models discussed above when the proper values are specified for its dimensionless parameters. Fish growth is inherently plastic and fish do not all grow the same way (Weatherley, 1990; Lorenzen, 2016), so a flexible growth model may be advantageous in certain situations. However, these flexible models may also be more sensitive to sampling biases in data, potentially producing growth patterns that reflect the size-frequency distribution of fish collected rather than the biological growth pattern of the species.

The Gulf Corvina (*Cynoscion othonopterus*) is an ideal species to examine the performance of multiple growth models in a highly-exploited marine fish. Endemic to the northern Gulf of California, Mexico (Robertson & Allen, 2008), it is currently listed as vulnerable under the International Union for the Conservation of Nature (IUCN) Redlist (Chao et al., 2010). Gulf Corvina have experienced persistent overfishing on their spawning aggregations for the past two decades, which have resulted in growing concern for the fishery's stability and longevity (Erisman et al., 2012; Ruelas-Peña, Valdez-Muñoz & Aragón-Noriega, 2013; Erisman et al., 2014; Ortiz et al., 2016). The life history of this species has been well documented and provides an ideal foundation for future analysis of individual and population growth (Román-Rodríguez, 2000; Gherard et al., 2013). With a documented maximum size of 1,013 mm total length (TL) and a documented maximum age of 9 years,

Gulf Corvina is a fast-growing, short-lived species which reaches sexual maturity at 2 years of age (Gherard *et al.*, 2013). However, the combination of highly efficient, size-selective gear and persistent overfishing have severely truncated the age structure of the population (Erisman *et al.*, 2014; Ortiz *et al.*, 2016). The mean age of capture of Gulf Corvina is 5 years (*ca.* 700 mm TL), and few individuals older than age 7 or younger than age 4 have been observed in the fishery (Gherard *et al.*, 2013; Erisman *et al.*, 2014; Ortiz *et al.*, 2016).

Past studies of Gulf Corvina growth, which have relied solely on fishery-dependent data with incomplete sampling of all size and age classes, have produced different results due to differences in model selection approach. Based on the congruence of the model with the growth pattern of many species of the genus *Cynoscion* and other sciaenid fishes (Rutherford, Thue & Buker, 1982; Lowerre-Barbieri, Chittenden & Barbieri, 1995; Rodriguez & Hammann, 1997), Gherard *et al.* (2013) took a conservative, single model approach and fit the von Bertalanffy growth model to Gulf Corvina age–length data. Conversely, Aragon-Noriega (2014) chose a statistically-driven approach and fit several models to multiple datasets, concluding that Gulf Corvina grew in a biphasic pattern with slow growth in the beginning of life, rapid growth after age two, and slow growth after age four. Notably, Aragon-Noriega's (2014) estimates for the  $L_{\infty}$  parameter varied greatly, from 735.0 to 1,126.6 mm, depending on which dataset was used. Given this variability, absence of biphasic growth patterns in similar sciaenids, and the distance from the maximum observed length of Gulf Corvina (1,013 mm; Gherard *et al.*, 2013), Aragon-Noriega's (2014) estimates may be biologically unrealistic. Mendivil-Mendoza *et al.* (2017) took a similar approach and found a similarly wide range of  $L_{\infty}$  values (666.7–1,306.0 mm). However, despite fitting models to similar data as Aragon-Noriega (2014), Mendivil-Mendoza *et al.* (2017) did not describe the biphasic growth pattern recorded by Aragon-Noriega (2014). The existence of discrepancies between the previous Gulf Corvina growth studies and the importance of the age–length relationship to the stock assessment of the fishery merit further investigation on the growth pattern of the species.

Here, we model the growth of Gulf Corvina and draw conclusions about data needs and fisheries assessments. Our specific objectives were to: (1) assess how representation of size and age classes affected growth parameter estimates and (2) compare the performance of multiple growth models for describing age-at-length data for Gulf Corvina. Through generating a more complete dataset than previous studies and testing for biases in our data with simple indicators, we addressed these objectives. Moreover, using the results of simulations with a per-recruit model, we discussed the implications of misrepresenting growth in highly-exploited, vulnerable marine fishes.

## MATERIALS AND METHODS

### Data collection

Seven hundred and forty-nine Gulf Corvina were sampled from 2009 through 2013 at the three locations in the upper Gulf of California: El Golfo de Santa Clara (Sonora), San Felipe (Baja California), and El Zanjón (Baja California). Information on total length (TL) was recorded to the nearest mm for each fish collected, and the sagittal otoliths were removed,

dried whole and stored until further use. Five hundred and thirty of these samples were collected from the commercial Gulf Corvina fishery and from bycatch from the shrimp fishery. These data were used by [Gherard et al. \(2013\)](#). In order to increase representation of size and age classes that were scarce in the dataset used by [Gherard et al. \(2013\)](#), we collected 219 additional samples in 2012–2013 from the bycatch of other fisheries (e.g., shrimp), fishery-independent sampling of small individuals (<30 cm TL), and the commercial Gulf Corvina fishery. All fish were deceased at the time of collection from fishers. The research protocol was approved under UCSD IACUC ID no. S13240, and data were collected under CONANP permit no. CNANP-00-007.

Otolith preparation and ageing protocols were followed according to the methods developed by [Gherard et al. \(2013\)](#) for Gulf Corvina. Whole sagittal otoliths were first mounted on wood blocks with a cyanoacrylate adhesive and a 0.5 mm dorsal-ventral cross-section was cut through the otolith focus using a double-bladed Buehler Isomet 1000 precision saw ([Allen et al., 1995](#)). Sub-sections were then mounted on a glass slide using thermoplastic glue and submerged in a glass petri dish with water and a black background. Transmitted light under a Zeiss Stemi 2000-C microscope with a Zeiss Axiocam 105 color camera at  $6.25\times$  total magnification was used to count the alternating opaque and translucent growth zones that define an annulus ([Fig. 1](#)). For the purposes of this study, an annulus was defined as one full opaque and translucent zone of growth ([Cailliet et al., 1996](#)), which was validated for Gulf Corvina by previous studies ([Román-Rodríguez, 2000](#); [Rowell et al., 2005](#); [Gherard et al., 2013](#)). Each otolith was aged by two independent readers from digital images of cross-sections, as direct observation through the scope did not distort band pattern and did not affect age estimates. Samples were excluded from analysis when discrepancies between readers occurred.

## Model fitting and assessment of fit

### Growth modelling

A suite of growth models was fit to age data determined from otoliths as described, and length data obtained in the field. Model parameters were estimated using non-linear least squares regression with the Levenberg–Marquardt algorithm, and confidence limits were placed around parameter estimates in R studio (using the R packages [Ogle, 2017](#); [Elzhov et al., 2015](#) and [Baty et al., 2015](#)).

The specialized von Bertalanffy growth model ([Von Bertalanffy, 1938](#)) is given by:

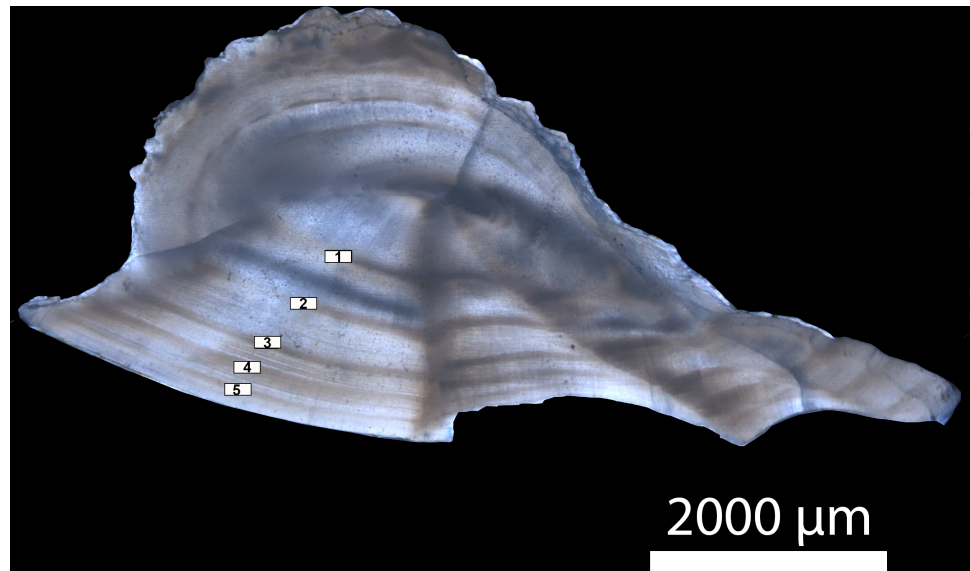
$$L(t) = L_{\infty}[1 - e^{-K(t-t_0)}] \quad (1)$$

where  $L(t)$  is size (in mm TL) at age  $t$ ,  $L_{\infty}$  is the maximum average length (in mm TL),  $K$  is the growth rate coefficient (in  $\text{year}^{-1}$ ), and  $t_0$  is the theoretical age at which length is zero (in years).

The Gompertz growth model ([Gompertz, 1825](#)) is given by:

$$L(t) = L_{\infty}e^{-(\frac{1}{K_1})e^{-K_2(t-t_0)}} \quad (2)$$

where the consistent parameters are the same as described for [Eq. \(1\)](#),  $K_1$  is the rate of exponential decrease of the relative growth rate with age (with units of  $\text{yr}^{-1}$ ), and  $t_1$  is  $1/k_4$  in  $\lambda$ , where  $\lambda$  is the theoretical initial relative growth rate at zero age (with units of  $\text{yr}^{-1}$ ).



**Figure 1** Transverse section of a sagittal otolith from a five-year old Gulf Corvina. Annuli are numbered and marked by white rectangles. Transmitted light under a Zeiss Stemi 2000-C microscope with a Zeiss Axiocam 105 color camera at  $6.25\times$  total magnification was used to count the alternating opaque and translucent growth zones that define an annulus.

Full-size  DOI: [10.7717/peerj.5582/fig-1](https://doi.org/10.7717/peerj.5582/fig-1)

The logistic model (Ricker, 1975) is given by:

$$L(t) = L_{\infty} [1 + e^{-K(t-t_0)}]^{-1} \quad (3)$$

where the consistent parameters are the same as described for Eqs. (1) and (2),  $K_2$  is a relative growth rate parameter (with units of  $\text{yr}^{-1}$ ), and  $t_2$  is the inflection point of the curve.

The Schnute model where  $a$  and  $b$  are not equal to zero (Schnute, 1981) is given by:

$$L(t) = \left[ L_1^b + (L_2^b - L_1^b) \frac{1 - e^{-a(t-T_1)}}{1 - e^{-a(T_2-T_1)}} \right]^{1/b} \quad (4)$$

where  $T_1$  is the first specified age,  $T_2$  is the second specified age,  $L_1$  is size at age  $T_1$ ,  $L_2$  is size at age  $T_2$ ,  $a$  is the constant relative rate of relative growth (in  $\text{year}^{-1}$ ), and  $b$  is the incremental relative rate of relative growth (dimensionless),

Finally, the Schnute–Richards model (Schnute & Richards, 1990) is given by:

$$L(t) = L_{\infty} \left( 1 + \alpha e^{-at^c} \right)^{1/b} \quad (5)$$

where  $\alpha$ ,  $b$ , and  $c$  are dimensionless parameters, and  $a$  has the unit of  $\text{year}^{-b}$ .

### Statistical measures of fit

Model fit was assessed with the bias-corrected Akaike Information Criterion (AICc) (Shono, 2000; Burnham & Anderson, 2004), and Bayesian Information Criterion (Schwarz, 1978) in R Studio (using the R package (Mazerolle, 2017)).

The formula for AICc is given by:

$$AIC_c = AIC + \frac{2k(k+1)}{n-k-1} \quad (6)$$

where:

$$AIC = -2\log(L) + 2k \quad (7)$$

and  $n$  is the number of observations,  $k$  is the number of model parameters, and  $L$  is the likelihood.

The formula for BIC is given by:

$$BIC = 2\ln(L) + k\log(n) \quad (8)$$

where parameter definitions are the same as described for Eq. (7).

The smallest AICc and BIC values indicate the best model. The difference between the two criteria is that AICc is designed to select the model that describes reality the best while treating no models as true, which is consistent with an information theory approach, whereas BIC is designed to select the true model. Practically, BIC penalizes for the number of parameters more heavily than AICc. AICc was used instead of AIC as it is bias-corrected at small  $n$  values or high  $k:n$  ratios; AICc converges to AIC at large  $n$  values (Burnham & Anderson, 2004). AICc and BIC values were calculated to show the absolute difference between model fits. Next, AICc weights were calculated for model averaging of parameter estimates; the AIC weighting formula is given by:

$$w_i = \frac{e(-0.5\Delta_i)}{\sum_{k=1}^5 e(-0.5\Delta_k)} \quad (9)$$

where parameter definitions are the same as described for Eqs. (7) and (8).

## Simple indicators of biased data

### *Simulation of an ideal sampling outcome*

To test for the influence of sampled population structure on growth model output, different amounts of simulated data were added to raw data so that each age observed (1–8) had 200 total observations. Data were simulated from a normal distribution with the same mean and standard deviation as the raw data at each age class. This simulation was not intended to generate the true population structure of Gulf Corvina in the Gulf of California, but rather to generate an equal number of samples in each age and size class. This simulation did not explicitly account for selectivity or limits in sampling effort, but filled in gaps left by these factors and others that prevented more equal representation of each size and age class in the raw data. Models were fit to the new dataset and goodness of fit was assessed in the same manner as was described above.

### *Froese and Binohlan's empirical relationship*

Froese & Binohlan's (2000) empirical relationship between the longest fish in the data set ( $L_{\max}$ ) and  $L_{\infty}$  was used to specifically test for the influence of the lack of large and old fish in the raw dataset, which is likely due to heavy exploitation. If large and old fish are

insufficiently represented in the dataset, it stands to reason that the  $L_{\infty}$  predicted by this relationship will be greater than the modelled  $L_{\infty}$ . This relationship is given by:

$$\log L_{\infty} = 0.044 + 0.9841 * \log(L_{\max}) \quad (10)$$

### **Literature review**

A brief literature review of sciaenid growth modelling was conducted to assess how the results of this study compared with other studies on fishes closely related to the Gulf Corvina (e.g., other species in the genus *Cynoscion*). In conjunction with Froese and Binohlan's empirical relationship and the simple simulation of an ideal sampling scenario, this brief literature review was intended to check if the samples used in this study produced a biologically plausible growth pattern when growth was modelled.

### **Simulations with a per-recruit model**

To be able to discuss the implications of misrepresenting growth in Gulf Corvina, we ran simulations with a per-recruit model detailed in [Appendix S1](#). In brief, this per-recruit model estimates the female spawning-stock-biomass-per-recruit (SSBR; a proxy of reproductive capacity) and yield-per-recruit (YPR; exploitable biomass) of Gulf Corvina in relation to the annual exploitation rates of the old adults ( $\geq 5$  year-old individuals) of the species ( $E_{OA}$ ). In this per-recruit model, Gulf Corvina are assumed to grow according to one of five alternative growth models: (1) the von Bertalanffy model developed in [Gherard et al. \(2013\)](#), referred to as the "Gherard model"; (2) the von Bertalanffy model fit to raw data in the present study; (3) the von Bertalanffy model fit to raw data bolstered by simulation values in this study; (4) the Schnute–Richards model fit to raw data in the present study; and (5) the Schnute–Richards model fit to raw data bolstered by simulation values in this study. The current  $E_{OA}$  was estimated to be  $0.825 \text{ year}^{-1}$  ([Appendix S1](#)). We first ran simulations with the per-recruit model to determine the maximum value of the YPR of Gulf Corvina ( $YPR_{\max}$ ) and the natural SSBR of Gulf Corvina (NSSBR), i.e., its SSBR in the absence of fishing ([Appendix S1](#)). Then, we estimated the current fraction of NSSBR (current FNSSBR, i.e., the ratio of current SSBR to NSSBR) and the current YPR over  $YPR_{\max}$  of Gulf Corvina, when each of the five abovementioned growth models is used to represent the growth in length of Gulf Corvina.

## **RESULTS**

### **Length and age structure**

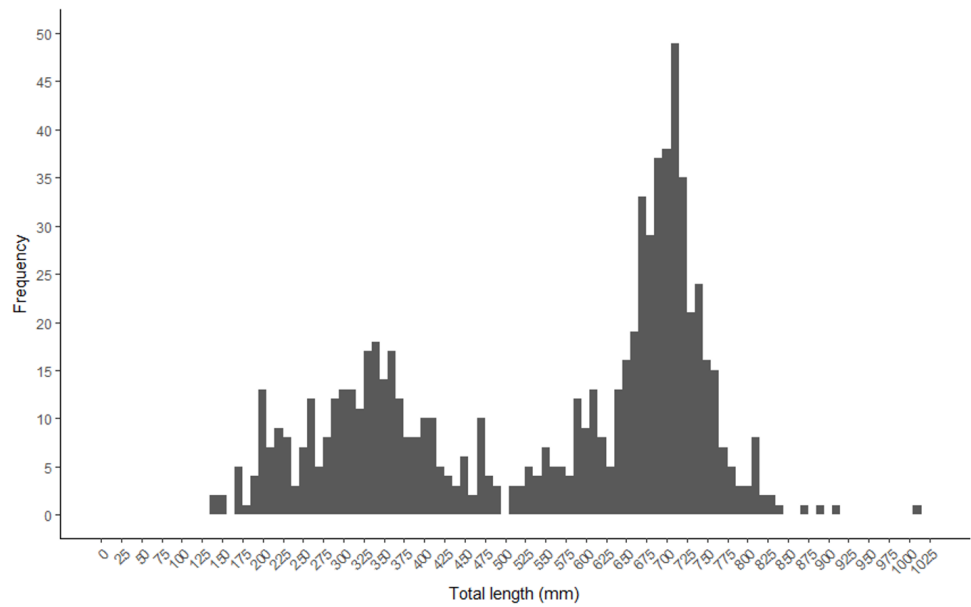
A bimodal distribution was observed in the length and age structure of the fish used in this study ([Figs. 2 and 3](#)). The first mode of the distribution represents Gulf Corvina caught as bycatch, whereas the second represents Gulf Corvina caught in the targeted fishery. Lengths ranged from 141–1,013 mm TL, and ages ranged from 1–8 years.

### **Model fitting and assessment of fit for models fit to raw data**

#### ***Growth patterns and parameter estimates for models fit to raw data***

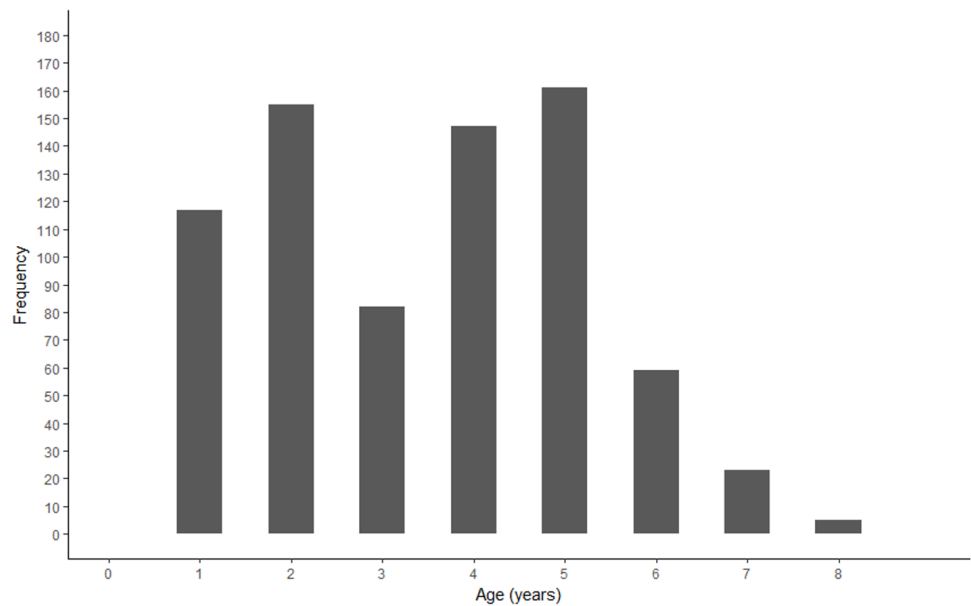
The Gompertz, logistic, and von Bertalanffy models yielded asymptotic growth patterns, while the Schnute–Richards model described biphasic growth and the Schnute model





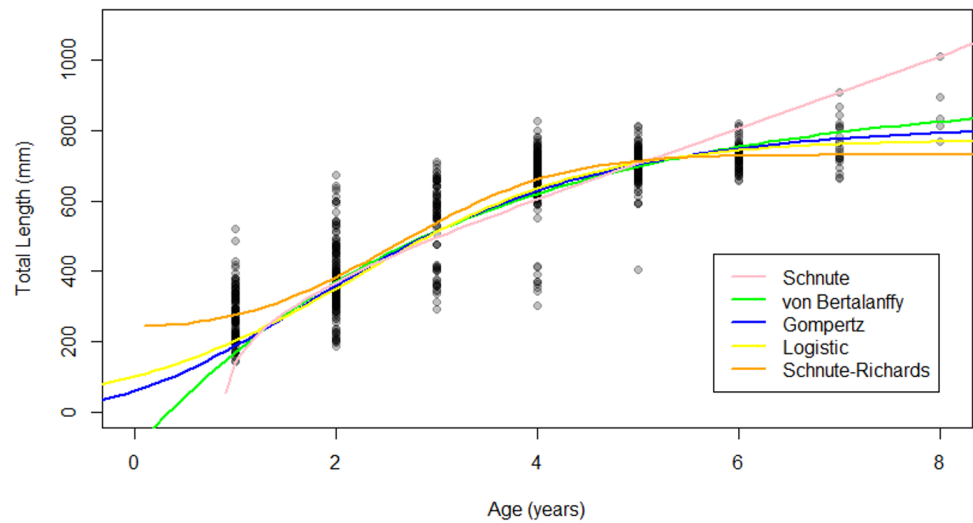
**Figure 2** Total length frequency of Gulf Corvina from raw data represented in 10 mm bins. A bimodal distribution was observed, with the first consisting of Gulf Corvina caught as bycatch, and the second largely consisting of fish from the directed fishery. Few fish larger than 750 mm are present in this dataset.

Full-size [DOI: 10.7717/peerj.5582/fig-2](https://doi.org/10.7717/peerj.5582/fig-2)



**Figure 3** Age frequency of Gulf Corvina from raw data. A bimodal distribution was observed, with the first consisting of Gulf Corvina caught as bycatch, and the second largely consisting of fish from the directed fishery. Few fish older than age 6 are present in this dataset.

Full-size [DOI: 10.7717/peerj.5582/fig-3](https://doi.org/10.7717/peerj.5582/fig-3)



**Figure 4** Growth models fit to raw age-length data for Gulf Corvina. The Gompertz, Logistic, and von Bertalanffy models yielded asymptotic growth patterns. However, the Schnute–Richards model described bi-phasic growth, and the Schnute model describes near-linear growth after the first 1.5 years of life. Differences in modelled size at age were most pronounced at the beginning and end of life, where samples were most scarce.

Full-size DOI: [10.7717/peerj.5582/fig-4](https://doi.org/10.7717/peerj.5582/fig-4)

**Table 1** Parameter estimates for growth models fit to raw age-length data for Gulf Corvina. Estimates of  $L_{\infty}$  were variable, but not as variable as those reported in previous multi-model studies of Gulf Corvina growth (Aragon-Noriega, 2014; Mendivil-Mendoza et al., 2017). Confidence intervals around parameter estimates may be found in the Supplemental Information.

Model name	Model equation when fit to raw data
von Bertalanffy	$L(t) = 916.05[1 - e^{-0.28(t - (-0.17))}]$
Gompertz	$L(t) = 820.64e^{-(\frac{1}{0.51})e^{-0.51(t - 1.29)}}$
Logistic	$L(t) = 778.88[1 + e^{-0.76(t - 1.92)}]^{-1}$
Schnute	$L(t) = \left[ 141^{-0.33} + (1013^{-0.33} - 141^{-0.33}) \frac{1 - e^{-3.36(t-1)}}{1 - e^{-3.36(8-1)}} \right]^{1/-0.33}$
Schnute–Richards	$L(t) = 730.91 \left( 1 + (-0.003)e^{-(0.12)t^{2.18}} \right)^{1/0.003}$

described near-linear growth after 1.5 years of life (Fig. 4). Modelled length at age was most similar among models at intermediate ages, where samples were most abundant (Fig. 4). Conversely, modelled length at age was most variable at young and old ages, where samples were most scarce (Fig. 4). Estimates of  $L_{\infty}$  ranged from 730.91 mm (Schnute–Richards model) to 916.05 mm (von Bertalanffy model). All parameter estimates are summarized in Table 1, while confidence intervals around parameter estimates are reported in Appendix S2.

### Measures of statistical fit for models fit to raw data

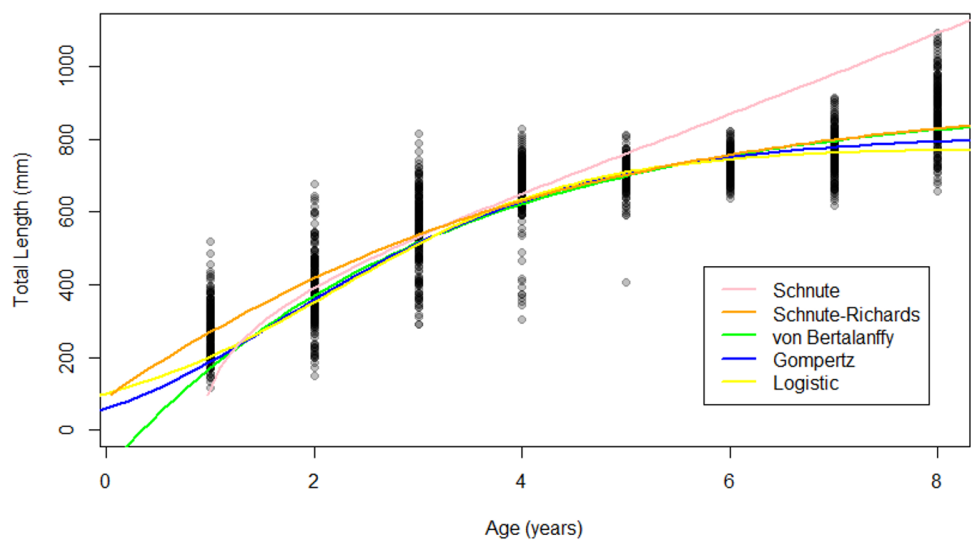
AICc and BIC values indicated that the Schnute–Richards model described the raw data best, followed by the logistic, Gompertz, von Bertalanffy, and Schnute models (Table 2).

**Table 2** Statistical measures of fit for growth models fit to raw age-length data for Gulf Corvina. The Schnute–Richards model fit the data best according to AICc and BIC values, but is only marginally better than the logistic, Gompertz, and von Bertalanffy models. Note:  $K$  indicates the number of parameters.

Model	$K$	AICc	$\Delta$ AICc	AICc weight	BIC	$\Delta$ BIC
Schnute–Richards	6	8,759.82	0.00	1	8,787.42	0.00
Logistic	4	8,773.62	13.80	0	8,792.04	4.62
Gompertz	4	8,789.69	29.87	0	8,808.11	20.69
von Bertalanffy	4	8,813.66	53.84	0	8,832.08	44.66
Schnute	3 <sup>a</sup>	9,148.78	388.96	0	9,162.61	375.19

**Notes.**

<sup>a</sup>Three parameters were estimated by nonlinear least squares, but four additional parameters were manually inputted (maximum and minimum ages and lengths) for the Schnute model.



**Figure 5** Growth models fit to raw Gulf Corvina age-length data bolstered by simulated values. All models except for the Schnute described asymptotic growth, and only showed slight differences in modelled size at age. Differences in modelled size at age were most pronounced at the beginning and end of life.

Full-size  DOI: [10.7717/peerj.5582/fig-5](https://doi.org/10.7717/peerj.5582/fig-5)

The AIC weighting formula gave full support to the Schnute–Richards model, so no model averaging of parameters was necessary.

### Simple indicators of biased data

#### *Growth patterns and parameter estimates for models fit to raw data bolstered by simulated values*

The Schnute–Richards, Gompertz, logistic and von Bertalanffy growth models yielded asymptotic growth patterns, while the Schnute model described near-linear growth after 1.5 years of age (Fig. 5). Modelled length at age was similar at intermediate ages among all growth models except for the Schnute model, but differed slightly at young and old ages (Fig. 5). Estimates of  $L_{\infty}$  ranged from 834.34 mm (logistic model) to 951.30 mm

**Table 3** Parameter estimates for growth models fit to raw Gulf Corvina age-length data bolstered by simulated values. Compared to parameter estimates for models fit to raw data alone, estimates of  $L_\infty$  were less variable and generally increased. These estimates are closer to the  $L_\infty$  of 1,006 predicted by Froese & Binohlan's (2000) empirical relationship between  $L_\infty$  and the longest fish in a dataset.

Model	Model fit to data bolstered by simulated values
von Bertalanffy	$L(t) = 951.30[1 - e^{-0.25(t - (-0.33))}]$
Gompertz	$L(t) = 870.48e^{-(\frac{1}{0.62})e^{-0.62(t-1.34)}}$
Logistic	$L(t) = 834.34[1 + e^{-0.62(t-2.10)}]^{-1}$
Schnute	$L(t) = \left[ 141^{-0.78} + (1013^{-0.78} - 141^{-0.78}) \frac{1 - e^{-6.06(t-1)}}{1 - e^{-6.06(8-1)}} \right]^{1/-0.78}$
Schnute–Richards	$L(t) = 938.80 \left( 1 + (-0.0046)e^{-(0.67)t^{0.72}} \right)^{1/0.0019}$

**Table 4** Statistical measures of fit for growth models fit to raw Gulf Corvina age-length data bolstered by simulated values. The von Bertalanffy growth model described the data best according to AICc and BIC values. However, AICc weighting indicated that the Schnute–Richards and Gompertz models had nearly equivalent fits. Note:  $K$  indicated the number of parameters in each model.

Model	$K$	AICc	$\Delta$ AICc	AICc weight	BIC	$\Delta$ BIC
von Bertalanffy	4	18,678.72	0.00	0.53	18,700.20	0.00
Schnute–Richards	6	18,679.65	0.94	0.33	18,711.87	11.67
Gompertz	4	18,681.29	2.57	0.15	18,702.77	2.57
Logistic	4	18,702.60	23.89	0	18,724.09	23.89
Schnute	3 <sup>a</sup>	19,891.72	1,213.01	0	19,907.84	1,207.64

**Notes.**

<sup>a</sup>Three parameters were estimated by nonlinear least squares, but four additional parameters were manually inputted (maximum and minimum ages and lengths) for the Schnute model.

(von Bertalanffy model) (Table 3). All parameter estimates for each growth model are summarized in Table 3.

**Measures of statistical fit for models fit to raw data bolstered by simulated values**

The von Bertalanffy growth model described the raw data bolstered by simulated values best according to AICc and BIC values (Table 4). However, it was only marginally better than the Schnute–Richards and Gompertz models based on AICc. Thus, the von Bertalanffy growth model received 53% of AICc weighting to the Schnute–Richards' 33%, and Gompertz' 15%. The logistic model fit the data better than the Schnute model, but neither models received any support from AICc weighting. Model averaging  $L_\infty$  based on AICc weights resulted in an estimated  $L_\infty$  of 945 mm, an estimate 6 mm shorter than the that predicted by the von Bertalanffy model. In contrast to AICc values, BIC values indicated that the Gompertz model fit the data better than the Schnute–Richards model. Both Gompertz and Schnute–Richards models fit the data better than the logistic and Schnute models according to BIC values, as was indicated by AICc values.

**Table 5** Models used to describe growth in sciaenid fishes similar to and including the Gulf Corvina. A review of 24 sciaenid growth studies indicated that sciaenid growth is most commonly modelled by the von Bertalanffy growth model (20 studies; 83% of studies reviewed).

Growth model selected	Genus and species	References
Gompertz	<i>Cynoscion nebulosus</i>	Murphy & Taylor, 1994 (females only)
Linear	<i>Cynoscion nebulosus</i>	Murphy & Taylor, 1994 (males only); Nieland, Thomas & Wilson, 2002
Logistic	<i>Cynoscion nebulosus</i>	Dippold et al., 2016
Schnute–Richards	<i>Cynoscion othonopterus</i>	Aragon-Noriega, 2014 (selected for two datasets) Schnute <i>Cynoscion othonopterus</i> Mendivil-Mendoza et al., 2017
von Bertalanffy	<i>Cynoscion nebulosus</i>	Rutherford, Thue & Buker, 1982; Maceina et al., 1987; Wieting, 1989; Cottrell, 1990
	<i>Cynoscion othonopterus</i>	Gherard et al., 2013; Aragon-Noriega, 2014 (selected for two datasets)
	<i>Cynoscion regalis</i>	Lowerre-Barbieri, Chittenden & Barbieri, 1995; Hatch & Jiao, 2016; White, 2017
	<i>Menticirrhus americanus</i>	Clardy et al., 2014
	<i>Micropogonias furnieri</i>	Manickchand-Heileman & Kenny, 1990; Santos et al., 2017
	<i>Micropogonias undulates</i>	Barger, 1985; Barbieri, Chittenden Jr & Jones, 1993; Franco, 2014
	<i>Pogonias chromis</i>	Murphy & Taylor, 1989
	<i>Sciaenops ocellatus</i>	Beckman, Fitzhugh & Wilson, 1988; Murphy & Taylor, 1990; Ross, Stevens & Vaughan, 1995
	<i>Totoaba macdonaldi</i>	Rodriguez & Hammann, 1997

### Froese and Binohlan's empirical relationship

Froese and Binohlan's empirical relationship between  $L_{\max}$  and  $L_{\infty}$  predicted a  $L_{\infty}$  of 1,006 mm from a maximum observed length of 1,013 mm. This estimate is larger than all estimates of  $L_{\infty}$  derived from growth models fit to raw data (Table 1) and raw data bolstered by simulated values (Table 3).

### Literature review

Results from our review of 24 sciaenid growth studies and citations are summarized in Table 5. Age and body length relationships in sciaenids were represented by the von Bertalanffy growth model in 20 of 24 (83%) of the studies we reviewed, as reported in Atlantic Croaker (*Micropogonias undulatus*), Black Drum (*Pogonias chromis*), Red Drum (*Sciaenops ocellatus*), Southern Kingfish (*Menticirrhus americanus*), Spotted Seatrout (*Cynoscion nebulosus*), Weakfish (*Cynoscion regalis*), and Whitemouth Croaker (*Micropogonias furnieri*). Notably, growth of the Totoaba (*Totoaba macdonaldi*), a sciaenid closely related to Gulf Corvina and also found in the Gulf of California, was modelled by the von Bertalanffy growth model. Growth of the Gulf Corvina was modelled using the von Bertalanffy growth model in two previous studies.

Other growth models have been used to describe age and body length relationships in sciaenids in five of 24 (21%) the studies we reviewed. The Gompertz model was used to

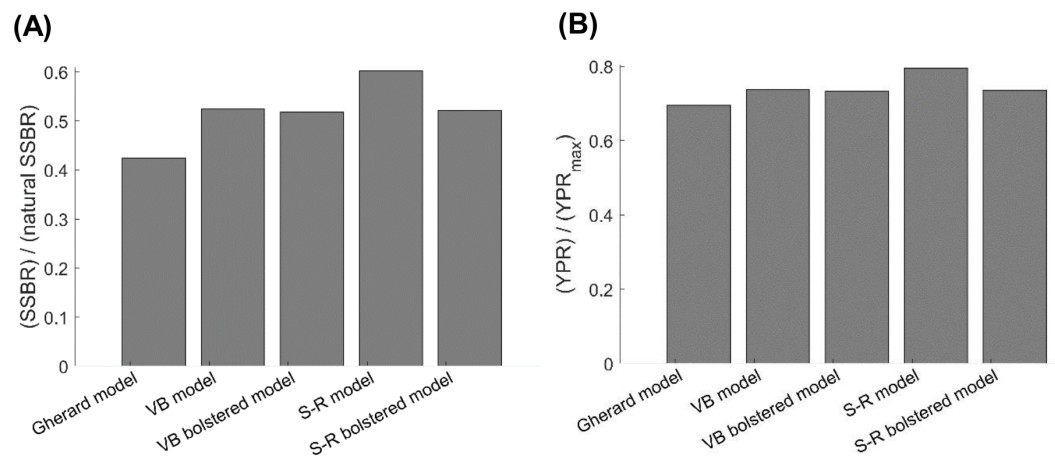
model growth in female Spotted Seatrout. A linear model was used to model growth in male Spotted Seatrout, although it was noted that the linear growth pattern may have been due to lack of sampling of large and old individuals. Multi-model approaches similar to this study were employed three times (13%). One study on the Gulf Corvina selected the von Bertalanffy growth model for two datasets, and the Schnute–Richards model for two other datasets. As such, this study was counted in as one of the 20 studies that used the von Bertalanffy growth model to model sciaenid growth, and as one of the five studies that employed other growth models. The most recent age and growth study on Gulf Corvina selected the Schnute model, but did not describe a biphasic growth pattern. The other study that employed multiple models fit them to Spotted Seatrout age–length data and found the most statistical support for the three-parameter logistic model.

### Model selection

Synthesis of the above considerations and assessments led to the selection of the von Bertalanffy growth model as the best model to represent Gulf Corvina growth. Of models fit in this study, the von Bertalanffy growth model had the 4th best statistical fit to raw data ( $AICc = 8,813.66$ ,  $\Delta AICc = 53.84$ ,  $AICc \text{ weight} = 0$ ;  $BIC = 8,832.08$ ,  $\Delta BIC = 44.66$ ; [Table 2](#)) and the best statistical fit to raw data bolstered by simulated values ( $AICc = 18,678.72$ ,  $\Delta AICc = 0$ ,  $AICc \text{ weight} = 0.53$ ;  $BIC = 18,700.20$ ,  $\Delta BIC = 0$ ; [Table 4](#)). Of models fit in this study, the von Bertalanffy growth model produced an  $L_\infty$  closest to the  $L_\infty$  predicted by Froese and Binohlan’s empirical relationship of 1,006 mm (raw data: 916.05 mm; raw data bolstered by simulated values: 951.30 mm; [Tables 1 and 3](#)). Further, the von Bertalanffy growth model was used to represent sciaenid growth in 83% of studies reviewed.

### Simulations with a per-recruit model

The current value of the exploitation rate of old adults of Gulf Corvina  $E_{OA}$  that we estimated is *ca.* twice larger than the value of  $E_{OA}$  at which the YPR of Gulf Corvina reaches a maximum, regardless of the growth model employed for simulations with the per-recruit model ([Appendix S1](#)). However, the current FNSSBR of Gulf Corvina predicted when using the Schnute–Richards growth model fit to raw data only (0.60) is noticeably greater than the current FNSSBR of Gulf Corvina predicted when using all the other growth models (0.42–0.53) ([Fig. 6A](#)). The value of fraction of natural SSBR that causes population collapse typically is in the range of 0.1–0.6 and lower for short-lived fish species such as Gulf Corvina ([Myers, Bowen & Barrowman, 1999](#); [Grüss, Kaplan & Robinson, 2014](#)). Thus, the per-recruit model employing Schnute–Richards growth model predicts the Gulf Corvina stock to be in a much healthier state than the per-recruit models employing other growth models. The current YPR over  $YPR_{max}$  of Gulf Corvina predicted when using the Schnute–Richards growth model fit to raw data only (0.80) is also greater than the current YPR over  $YPR_{max}$  of Gulf Corvina predicted when using all the other growth models (0.70–0.74) ([Fig. 6B](#)).



**Figure 6** Consequences of using different growth models on (A) the current female SSBR over natural SSBR and (B) current YPR over  $YPR_{max}$  of Gulf Corvina (*Cynoscion othonopterus*). Per-recruit models employing the S-R growth model showed the stock to be in a healthier state than per-recruit models employing other growth models. SSBR, spawning-stock-biomass-per-recruit; YPR, yield-per-recruit; Gherard model, von Bertalanffy model developed in [Gherard et al. \(2013\)](#); VB model, von Bertalanffy model fit to raw data in the present study; VB bolstered model, von Bertalanffy model fit to raw data bolstered by simulation values in this study; S-R model, Schnute–Richards model fit to raw data in the present study; S-R bolstered model, Schnute–Richards model fit to raw data bolstered by simulation values in this study.

Full-size DOI: [10.7717/peerj.5582/fig-6](https://doi.org/10.7717/peerj.5582/fig-6)

## DISCUSSION

This study illustrates the pitfalls of using statistical considerations alone when selecting a growth model for a vulnerable and highly-exploited species, due to the high likelihood of a biased distribution of samples. The combination of highly efficient, size-selective gear and high fishing effort have altered the age structure of the Gulf Corvina population ([Ortiz et al., 2016](#)), making sufficient representation of each size and age class difficult ([Erisman et al., 2014](#)). The influence of the lack of large and old fish in the dataset used for this study is clear, as [Froese & Binohlan's \(2000\)](#) empirical relationship predicted an  $L_{\infty}$  that was 89.95–275.09 mm greater than the  $L_{\infty}$  predicted by growth modeled fit to raw data. This predicted  $L_{\infty}$  from [Froese & Binohlan's \(2000\)](#) empirical relationship of 1,006 mm was identical to the  $L_{\infty}$  estimated by [Gherard et al. \(2013\)](#) with the von Bertalanffy growth model. Growth patterns ([Figs. 4 and 5](#)) and parameter estimates ([Tables 1 and 3](#)) were far less variable for models fit to data where sample size was equal at age, compared to models fit to raw data alone.

Unfortunately, heavy exploitation of Gulf Corvina makes the use of biased data in age and growth studies an unavoidable reality. Length data collected from the continuous monitoring of the fishery ([Erisman et al., 2015](#); [Ortiz et al., 2016](#)) suggest that Gulf Corvina may be able to grow longer than their maximum reported length of 1,013 mm and live longer than their maximum reported age of 9 years, but heavy exploitation (exploitation rate of  $0.825 \text{ year}^{-1}$  for Gulf Corvina five years-old and older; [Erisman et al. \(2014\)](#)) prevents them from doing so. Thus, despite our best efforts, we were unable to sufficiently represent large and old fish in our dataset. Further, while we made a concerted effort to sample

small individuals, our data set would have been improved if we were able to collect more. This led to our decision to employ our simulation exercise to understand how the biases in our data affected our results. Similarly biased data have been the only data available for age and growth studies with Gulf Corvina, and previous studies have taken markedly different approaches to dealing with its limitations. [Gherard et al. \(2013\)](#) chose to use the inflexible and widely comparable von Bertalanffy growth model while acknowledging the data's limitations and caveating results accordingly. Alternatively, [Aragon-Noriega \(2014\)](#) and [Mendivil-Mendoza et al. \(2017\)](#) employed a multi-model approach that leaned exclusively on statistics. Their statistical procedures led to the selection of the flexible Schnute–Richards and Schnute models to describe Gulf Corvina growth. Despite reporting different growth patterns depending on which dataset was used, [Aragon-Noriega \(2014\)](#) did not acknowledge the limitations of fishery-dependent data and concluded that Gulf Corvina grew in a biphasic pattern.

The same suite of models employed by [Aragon-Noriega \(2014\)](#) were fit to our data, and statistical measures of fit similarly supported the Schnute–Richards model as the best model for Gulf Corvina. Further, a biphasic growth pattern was described by the model, as it did in [Aragon-Noriega's \(2014\)](#) study. However, our review of 24 sciaenid growth studies indicated that only one (4%) study used the Schnute–Richards model to describe sciaenid growth ([Aragon-Noriega, 2014](#); [Mendivil-Mendoza et al., 2017](#)), and it was only this study that described a biphasic growth pattern. The biological implausibility of this growth pattern was further supported by the distance between Froese and Binohlan's predicted  $L_{\infty}$  and the  $L_{\infty}$  estimated by the Schnute–Richards model (1,006 vs. 730.91 mm, i.e., a 275.09 mm difference). Finally, simulating an ideal sampling scenario where each age class was equally represented revealed that this biphasic growth pattern was due to bimodal distribution of samples and a lack of large, old fish. Both the parameter estimates and growth pattern changed substantially when simulated data was added to raw data so that sample size was equal for each age ([Fig. 5](#) and [Table 3](#)). The Schnute–Richards model is flexible by design, and is, therefore, not suited for use with datasets that do not sufficiently represent each size and age class. Thus, by integrating the results of our statistical measures of fit, literature review, and simple indicators of biased data, we selected the von Bertalanffy growth model as the best model to represent Gulf Corvina growth.

The results of our study reinforce the well-established, but often forgotten, principle that each size and age class must be sufficiently represented for growth modelling to produce biologically reasonable results ([Cailliet et al., 1986](#); [Cailliet & Tanaka, 1990](#); [Francis & Francis, 1992](#); [Cailliet & Goldman, 2004](#)). Ensuring sufficient representation may be difficult for highly-exploited fishes, as exploitation alters the population structure of fishes by preferentially selecting for large and old fish individuals ([Berkeley et al., 2004](#); [Mason, 1998](#)). Similar challenges are faced when studying growth for vulnerable fishes or in data-poor fisheries, where there may not be resources available for extensive fishery-independent sampling or fish are scarce in general. Despite difficulty, ensuring sufficient representation of each size and age class should be a priority. The distinction between sampling to sufficiently represent each size and age class and sampling to represent population structure is an important one to make, as sampling to represent population



structure should not be a goal of age and growth studies due to the bias created by the natural scarcity of large and old fish. As such, the simple simulation of an ideal sampling scenario with an equal number of samples at each age was not intended to represent the population structure of Gulf Corvina or to reflect the relative probability of obtaining samples of particular size and age classes in the real world.

Life-history parameters such as those estimated in growth models are influential in assessments for vulnerable and data-poor species (*Fournier et al., 1990; Dulvy et al., 2004; Froese, 2004; Honey, Moxley & Fujita, 2010; Hordyk et al., 2016*). These types of assessments rely on age-length data to determine vulnerability and overfishing, and problems emerge when all size and age classes are not sufficiently represented. The average maximum length ( $L_{\infty}$ ) is underestimated and the growth rate ( $K$ ) is overestimated when large and old fish are absent. Accordingly, a short generation time and lower levels of mortality are estimated, conferring more resilience to exploitation than the population possesses (*Campana, 2001; Goldman et al., 2012; Harry, 2017*). This idea was demonstrated with simulations with a per-recruit model, where the per recruit model using the Schnute–Richards growth model fit to raw data (which had the lowest  $L_{\infty}$  in the present study) predicted Gulf Corvina reproductive capacity to be in a much healthier state than the per recruit models using other growth models (*Fig. 6A*). This false resiliency makes fishery management measures less effective (*Campana, 2001; Cailliet & Andrews, 2008; Goldman et al., 2012*), and may be present in Gulf Corvina assessments, as length and age truncation in the catch has increased progressively since biological monitoring of the fishery began in 1997 (*Erismann et al., 2014*). Given this length and age truncation, published growth models reported for this species may not be representing biology but rather the influence of exploitation.

Our results have implications for estimating growth within a stock assessment. *Piner, Lee & Maunder (2016)* documented an increase in precision in parameter estimates, ability to account for selectivity, and ability to incorporate multiple data sources when growth was estimated within a stock assessment. However, the influence of sample distribution on model output should be carefully examined if this approach is to be taken. So-called haphazard sampling strategies that ensure that all age and size classes are represented (e.g., *Wells et al., 2013*) make growth estimation within a stock assessment model more difficult, though are necessary if the density of samples at a particular age is driving model fit or preventing accurate estimation of  $L_{\infty}$ . Precision may be improved, but care must be taken to ensure that precision is being improved around biological reality.

We found that Gulf Corvina exhibit a high degree of variation in length-at-age, a pattern that is common among coastal fishes in the Gulf of California and other regions of the eastern Pacific characterized by significant annual variations in precipitation, ocean temperatures, and productivity in response to climate forcing that are known to influence growth rates in marine fishes (e.g., El Niño Southern Oscillation, ENSO; (*Wells et al., 2006; Williams et al., 2007; Black, 2009*)). Specifically, growth rate is higher in Gulf Corvina during El Niño years, mainly in association with increased sea surface temperatures in the region (*Reed, 2017*). ENSO has been shown to affect fish growth in other areas, such as the waters of New Caledonia (*Lehodey & Grandperrin, 1996*), New Zealand (*Gillanders et al., 2012*), and north-western Australia (*Ong et al., 2015; Ong et al., 2016*). As the present study was

conducted over multiple years, it is reasonable to assume that variations in ENSO over the study period (i.e., a succession of El Niño/La Niña events) could have affected the fish harvested for this study, explaining the observed variation in length-at-age. These effects may affect estimates of growth derived with growth models, but in order to identify these effects with confidence, complete sampling must be conducted with this purpose in mind. Another explanation for length-at-age variation could be measurement error (*Neilson, 1992; Campana, 2001*). Most of the fish in this study were harvested during their spawning season, which is around the time when they form new annuli. Therefore, it would be reasonable to conservatively assume that the precision of this study is more or less one year of age. However, we have high confidence in our reading of these otoliths, as annuli are clearly seen with minimal preparation (*Fig. 1*), and we excluded any samples for which there was a disagreement between readers.

Assessing the biological feasibility of growth model output, here accomplished with the use of simple indicators of biased data and literature review, is crucial for age and growth studies. Statistical measures of fit alone may not lead to the selection of a model that represents biological reality (*Wang, Thomas & Somers, 1995; Cailliet et al., 2006; Araya & Cubillos, 2006*). By integrating measures of statistical fit with results from the simple indicators and literature review, we concluded that the von Bertalanffy growth model best described the growth of Gulf Corvina and was most appropriate for the quality of available data. Though the Schnute–Richards model had the best statistical fit, it was not biologically reasonable, comparable between studies, or robust to biased data. Simple indicators such as those described in this paper should be used to reveal biases in data, and the use of flexible growth models such as the Schnute–Richards model to represent the growth of Gulf Corvina and similarly exploited fishes should be halted if biases are not accounted for.

## CONCLUSIONS

Sample distribution influences growth model output, especially for flexible, statistically-driven models. Data used in growth modelling studies should be thoroughly examined for bias, as statistical measures of fit are insufficient as the sole criteria for selecting a model that reflects biological reality. Reflecting biological reality in growth models is critical for vulnerable fish and in data-poor fisheries, where age–length data are integral to assessing vulnerability and overfishing. In this case, the von Bertalanffy growth model represented biological reality best among the models tested. We warn against the production and use of growth models without recognizing biases in data given the serious implications for stock assessments and the management of vulnerable fish populations and data-poor fisheries.

## ACKNOWLEDGEMENTS

We acknowledge the Gulf of California Marine Program at Scripps Institution of Oceanography, project participants from El Centro para la Biodiversidad Marina y la Conservación and the fishers of the upper Gulf of California, Mexico for their contributions to data collection efforts. We thank Gregor Cailliet for his pre-submission comments on

the manuscript, Chip Cotton, Brian Moe, and Grant Scholten for their feedback during data analysis, and Tyler Loughran for her help with formatting figures.

## ADDITIONAL INFORMATION AND DECLARATIONS

### Funding

This work was supported by grants from The Walton Family Foundation, World Wildlife Fund Mexico, and the Environmental Defense Fund. The funders had no role in study design, data collection and analysis, decision to publish, or preparation of the manuscript.

### Grant Disclosures

The following grant information was disclosed by the authors:

Walton Family Foundation.

World Wildlife Fund Mexico.

The Environmental Defense Fund.

### Competing Interests

The authors declare there are no competing interests.

### Author Contributions

- Derek G. Bolser conceived and designed the experiments, analyzed the data, prepared figures and/or tables, authored or reviewed drafts of the paper, approved the final draft.
- Arnaud Grüss analyzed the data, prepared figures and/or tables, authored or reviewed drafts of the paper, approved the final draft.
- Mark A. Lopez analyzed the data, approved the final draft.
- Erin M. Reed performed the experiments, analyzed the data, prepared figures and/or tables, authored or reviewed drafts of the paper, approved the final draft.
- Ismael Mascareñas-Osorio performed the experiments, analyzed the data, contributed reagents/materials/analysis tools, approved the final draft.
- Brad E. Erisman conceived and designed the experiments, performed the experiments, analyzed the data, contributed reagents/materials/analysis tools, prepared figures and/or tables, authored or reviewed drafts of the paper, approved the final draft.

### Animal Ethics

The following information was supplied relating to ethical approvals (i.e., approving body and any reference numbers):

Research protocol was approved under University of California San Diego IACUC ID no. S13240.

### Field Study Permissions

The following information was supplied relating to field study approvals (i.e., approving body and any reference numbers):

Data were collected under CONANP permit no. CNANP-00-007.

## Data Availability

The following information was supplied regarding data availability:

The raw data and code are provided in the [Supplemental Files](#).

## Supplemental Information

Supplemental information for this article can be found online at <http://dx.doi.org/10.7717/peerj.5582#supplemental-information>.

## REFERENCES

- Allen LG, Hovey TE, Love MS, Smith JT. 1995.** The life history of the spotted sand bass (*Paralabrax maculatofasciatus*) within the southern California bight. *California Cooperative Oceanic Fisheries Investigations Report* **36**:193–203.
- Aragon-Noriega EA. 2014.** Modeling the individual growth of the Gulf corvina, *Cynoscion othonopterus* (Pisces: Sciaenidae), using a multi-model approach. *Ciencias Marinas* **40**:149–161 DOI [10.7773/cm.v40i2.2410](https://doi.org/10.7773/cm.v40i2.2410).
- Araya M, Cubillos LA. 2006.** Evidence of two-phase growth in elasmobranchs. In: *Special issue: age and growth of chondrichthyan fishes: new methods, techniques and analysis*. Dordrecht: Springer Netherlands, 293–300.
- Barbieri LR, Chittenden Jr ME, Jones CM. 1993.** Age, growth, and mortality of Atlantic croaker, *Micropogonias undulatus*, in the Chesapeake Bay region, with a discussion of apparent geographic changes in population dynamics. *Fishery Bulletin* **92**(1):1–12.
- Barger LE. 1985.** Age and growth of Atlantic Croakers in the Northern Gulf of Mexico, based on otolith sections. *Transactions of the American Fisheries Society* **114**:847–850 DOI [10.1577/1548-8659\(1985\)114<847:AAGOAC>2.0.CO;2](https://doi.org/10.1577/1548-8659(1985)114<847:AAGOAC>2.0.CO;2).
- Baty F, Ritz C, Charles S, Brutsche M, Flandrois JP, Delignette-Muller ML. 2015.** A toolbox for nonlinear regression in R: the package nlstools. *Journal of Statistical Software* **66**(5):1–21.
- Beckman DW, Fitzhugh GR, Wilson CA. 1988.** Growth rates and validation of age estimates of red drum, *Sciaenops ocellatus*, in a Louisiana salt marsh impoundment. *Contributions in Marine Science* **1988**.
- Berkeley SA, Hixon MA, Larson RJ, Love MS. 2004.** Fisheries sustainability via protection of age structure and spatial distribution of fish populations. *Fisheries* **29**:23–32 DOI [10.1577/1548-8446\(2004\)29\[23:FSVPOA\]2.0.CO;2](https://doi.org/10.1577/1548-8446(2004)29[23:FSVPOA]2.0.CO;2).
- Beverton RJH, Holt SJ. 1957.** On the dynamics of exploited fish populations. *Fisheries investigation series 2*, vol. 19. London: UK Ministry of Agriculture, Fisheries, and Food.
- Black BA. 2009.** Climate-driven synchrony across tree, bivalve, and rockfish growth-increment chronologies of the northeast Pacific. *Marine Ecology Progress Series* **378**:37–46 DOI [10.3354/meps07854](https://doi.org/10.3354/meps07854).
- Brunel T, Dickey-Collas M. 2010.** Effects of temperature and population density on von Bertalanffy growth parameters in Atlantic herring: a macro-ecological analysis. *Marine Ecology Progress Series* **405**:15–28 DOI [10.3354/meps08491](https://doi.org/10.3354/meps08491).

- Burnham KP, Anderson DR. 2004.** Multimodel inference: understanding AIC and BIC in model selection. *Sociological Methods & Research* **33**:261–304 DOI [10.1177/0049124104268644](https://doi.org/10.1177/0049124104268644).
- Cailliet GM, Andrews AH. 2008.** Age-validated longevity of fishes: its importance for sustainable fisheries. In: Tsukamoto K, Kawamura T, Takeuchi T, Beard Jr TD, Kaiser MJ, eds. *Fisheries for Global Welfare and Environment*. 103–120.
- Cailliet GM, Botsford LW, Brittnacher JG, Ford G, Matsubayashi M, King A, Watters DL, Kope RG. 1996.** Development of a computer-aided age determination system: evaluation based on otoliths of bank rockfish off California. *Transactions of the American Fisheries Society* **125**(6):874–888 DOI [10.1577/1548-8659\(1996\)125<0874:DOACAA>2.3.CO;2](https://doi.org/10.1577/1548-8659(1996)125<0874:DOACAA>2.3.CO;2).
- Cailliet GML, Ebeling MS, Cailliet AWGM, Love MS, Ebeling AW. 1986.** *Fishes: a field and laboratory manual on their structure, identification, and natural history* (No. C/597.04 C3). Belmont: Wadsworth Publishing Co.
- Cailliet GM, Goldman KJ. 2004.** Age Determination and validation in Chondrichthyan fishes. In: Carrier J, Musick JA, Heithaus MR, eds. *Biology of sharks and their relatives*. Boca Raton: CRC Press LLC, 399–447 (Chapter 14).
- Cailliet GM, Smith WD, Mollet HF, Goldman KJ. 2006.** Age and growth studies of chondrichthyan fishes: the need for consistency in terminology, verification, validation, and growth function fitting. *Environmental Biology of Fishes* **77**:211–228 DOI [10.1007/s10641-006-9105-5](https://doi.org/10.1007/s10641-006-9105-5).
- Cailliet GM, Tanaka S. 1990.** Recommendations for research needed to better understand the age and growth of elasmobranchs. In: Pratt Jr WS, Gruber SH, Taniuchi T, eds. *Elasmobranchs as living resources: advances in the biology, ecology, systematics, and the status of the fisheries*. Vol. 90. NOAA Tech. Rep, 505–507.
- Campana SE. 2001.** Accuracy, precision and quality control in age determination, including a review of the use and abuse of age validation methods. *Journal of Fish Biology* **59**:197–242 DOI [10.1111/j.1095-8649.2001.tb00127.x](https://doi.org/10.1111/j.1095-8649.2001.tb00127.x).
- Chao L, Espinosa H, Findley L, Van der Heiden A. 2010.** *Cynoscion othonopterus*. IUCN 2012. IUCN Red List of Threatened Species. Version 2012.2. Available at <http://www.iucnredlist.org/> (accessed on 20 September 2017).
- Chen Y, Jackson DA, Harvey HH. 1992.** A comparison of von Bertalanffy and polynomial functions in modelling fish growth data. *Canadian Journal of Fisheries and Aquatic Sciences* **49**:1228–1235 DOI [10.1139/f92-138](https://doi.org/10.1139/f92-138).
- Clardy SD, Brown-Peterson NJ, Peterson MS, Leaf RT. 2014.** Age, growth, and reproduction of Southern Kingfish (*Menticirrhus americanus*): a multivariate comparison with life history patterns in other sciaenids. *Fishery Bulletin* **112**:178–197 DOI [10.7755/FB.112.2-3.6](https://doi.org/10.7755/FB.112.2-3.6).
- Cottrell SA. 1990.** Age and growth of spotted seatrout in the Indian River Lagoon, Florida. Master's thesis, University of Central Florida, Orlando.
- Czarnolewski M, Kozłowski J. 1998.** Do Bertalanffy's growth curves result from optimal resource allocation? *Ecology Letters* **1**(1):5–7 DOI [10.1046/j.1461-0248.1998.0007b.x](https://doi.org/10.1046/j.1461-0248.1998.0007b.x).

- Dippold DA, Leaf RT, Hendon JR, Franks JS. 2016.** Estimation of the length-at-age relationship of mississippi's spotted seatrout. *Transactions of the American Fisheries Society* **145**:295–304 DOI [10.1080/00028487.2015.1121926](https://doi.org/10.1080/00028487.2015.1121926).
- Dulvy NK, Ellis JR, Goodwin NB, Grant A, Reynolds JD, Jennings S. 2004.** Methods of assessing extinction risk in marine fishes. *Fish and Fisheries* **5**:255–276 DOI [10.1111/j.1467-2679.2004.00158.x](https://doi.org/10.1111/j.1467-2679.2004.00158.x).
- Elzhov TV, Mullen KM, Spiess A-N, Bolker B, Mullen MKM. 2015.** Package 'minpack.lm'. CRAN Repository. Available at <https://cran.r-project.org/web/packages/minpack.lm/index.html>.
- Erisman B, Aburto-Oropeza O, Gonzalez-Abraham C, Mascareñas-Osorio I, Moreno-Báez M, Hastings PA. 2012.** Spatio-temporal dynamics of a fish spawning aggregation and its fishery in the Gulf of California. *Scientific Reports* **2**:srep00284 DOI [10.1038/srep00284](https://doi.org/10.1038/srep00284).
- Erisman BE, Apel AM, MacCall AD, Román MJ, Fujita R. 2014.** The influence of gear selectivity and spawning behavior on a data-poor assessment of a spawning aggregation fishery. *Fisheries Research* **159**:75–87 DOI [10.1016/j.fishres.2014.05.013](https://doi.org/10.1016/j.fishres.2014.05.013).
- Erisman B, Mascareñas I, Lopez-Sagastegui C, Moreno-Baez M, Jimenez-Esquivel V, Aburto-Oropeza O. 2015.** A comparison of fishing activities between two coastal communities within a biosphere reserve in the Upper Gulf of California. *Fisheries Research* **164**:254–265 DOI [10.1016/j.fishres.2014.12.011](https://doi.org/10.1016/j.fishres.2014.12.011).
- Fournier DA, Sibert JR, Majkowski J, Hampton J. 1990.** MULTIFAN a likelihood-based method for estimating growth parameters and age composition from multiple length frequency data sets illustrated using data for Southern Bluefin Tuna (*Thunnus maccoyii*). *Canadian Journal of Fisheries and Aquatic Sciences* **47**:301–317 DOI [10.1139/f90-032](https://doi.org/10.1139/f90-032).
- Francis MP, Francis RICC. 1992.** Growth rate estimates for New Zealand rig (*Mustelus lenticulatus*). *Australian Journal of Marine and Freshwater Research* **43**:1157–1176 DOI [10.1071/MF9921157](https://doi.org/10.1071/MF9921157).
- Francis RICC. 2016.** Growth in age-structured stock assessment models. *Fisheries Research* **180**:77–86 DOI [10.1016/j.fishres.2015.02.018](https://doi.org/10.1016/j.fishres.2015.02.018).
- Franco DM. 2014.** Determining life history characteristics of Atlantic croaker, *Micropogonias undulatus*, within coastal Georgia waters. Master's Thesis, Savannah State University.
- Froese R. 2004.** Keep it simple: three indicators to deal with overfishing. *Fish and Fisheries* **5**:86–91 DOI [10.1111/j.1467-2979.2004.00144.x](https://doi.org/10.1111/j.1467-2979.2004.00144.x).
- Froese R, Binohlan C. 2000.** Empirical relationships to estimate asymptotic length, length at first maturity and length at maximum yield per recruit in fishes, with a simple method to evaluate length frequency data. *Journal of Fish Biology* **56**:758–773 DOI [10.1111/j.1095-8649.2000.tb00870.x](https://doi.org/10.1111/j.1095-8649.2000.tb00870.x).
- Gallucci II VF, Quinn TJ. 1979.** Reparameterizing, fitting, and testing a simple growth model. *Transactions of the American Fisheries Society* **108**:14–25 DOI [10.1577/1548-8659\(1979\)108<14:RFATAS>2.0.CO;2](https://doi.org/10.1577/1548-8659(1979)108<14:RFATAS>2.0.CO;2).

- Gherard KE, Erisman BE, Aburto-Oropeza O, Rowell K, Allen LG. 2013.** Growth, development, and reproduction in Gulf corvina (*Cynoscion othonopterus*). *Bulletin Southern California Academy of Sciences* **112**:1–18.
- Gillanders BM, Black BA, Meekan MG, Morrison MA. 2012.** Climatic effects on the growth of a temperate reef fish from the Southern Hemisphere: a biochronological approach. *Marine Biology* **159**:1327–1333 DOI [10.1007/s00227-012-1913-x](https://doi.org/10.1007/s00227-012-1913-x).
- Goldman KJ, Cailliet GM, Andrews AH, Natanson LJ. 2012.** Assessing the age and growth of chondrichthyan fishes. In: Carrier J, Musick JA, Heithaus MR, eds. *Biology of sharks and their relatives*. Second Edition. Boca Raton: CRC Press LLC, 423–452 (Chapter 14).
- Gompertz B. 1825.** On the nature of the function expressive of the law of human mortality, and on a new mode of determining the value of life contingencies. *Philos. Trans. R. Soc. Lond.* **115**:513–583 DOI [10.1098/rstl.1825.0026](https://doi.org/10.1098/rstl.1825.0026).
- Grüss A, Kaplan DM, Robinson J. 2014.** Evaluation of the effectiveness of marine reserves for transient spawning aggregations in data-limited situations. *ICES Journal of Marine Science* **71**:435–449 DOI [10.1093/icesjms/fst028](https://doi.org/10.1093/icesjms/fst028).
- Harry AV. 2017.** Evidence for systemic age underestimation in shark and ray ageing studies. *Fish and Fisheries* **19**(2):1–16 DOI [10.1111/faf.12243](https://doi.org/10.1111/faf.12243).
- Hatch J, Jiao Y. 2016.** A comparison between traditional and measurement-error growth models for weakfish *Cynoscion regalis*. *PeerJ* **4**:e2431 DOI [10.7717/peerj.2431](https://doi.org/10.7717/peerj.2431).
- Helser TE, Lai H-L. 2004.** A Bayesian hierarchical meta-analysis of fish growth: with an example for North American largemouth bass, *Micropterus salmoides*. *Ecological Modelling* **178**:399–416 DOI [10.1016/j.ecolmodel.2004.02.013](https://doi.org/10.1016/j.ecolmodel.2004.02.013).
- Honey KT, Moxley JH, Fujita RM. 2010.** From rags to fishes: data-poor methods for fishery managers. In: *Managing data-poor fisheries: case studies, models and solutions*. Vol. 1. 159–184(California Sea Grant College Program).
- Hordyk AR, Ono K, Prince JD, Walters CJ. 2016.** A simple length-structured model based on life history ratios and incorporating size-dependent selectivity: application to spawning potential ratios for data-poor stocks. *Canadian Journal of Fisheries and Aquatic Sciences* **73**:1787–1799 DOI [10.1139/cjfas-2015-0422](https://doi.org/10.1139/cjfas-2015-0422).
- Kimura DK. 2008.** Extending the von Bertalanffy growth model using explanatory variables. *Canadian Journal of Fisheries and Aquatic Sciences* **65**:1879–1891 DOI [10.1139/F08-091](https://doi.org/10.1139/F08-091).
- Lehodey P, Grandperrin R. 1996.** Influence of temperature and ENSO events on the growth of the deep demersal fish alfonso, *Beryx splendens*, off New Caledonia in the western tropical South Pacific Ocean. *Deep-Sea Research Part I: Oceanographic Research Papers* **43**:49–57 DOI [10.1016/0967-0637\(95\)00096-8](https://doi.org/10.1016/0967-0637(95)00096-8).
- Lorenzen K. 2016.** Toward a new paradigm for growth modeling in fisheries stock assessments: embracing plasticity and its consequences. *Fisheries Research* **180**:4–22 DOI [10.1016/j.fishres.2016.01.006](https://doi.org/10.1016/j.fishres.2016.01.006).
- Lowerre-Barbieri SK, Chittenden ME, Barbieri LR. 1995.** Age and growth of weakfish, *Cynoscion regalis*, in the Chesapeake Bay region with a discussion of historical changes in maximum size. *Fishery Bulletin* **93**(4):643–656.

- Maceina MJ, Hata DN, Linton TL, Landry AM. 1987.** Age and growth analysis of spotted seatrout from Galveston Bay, Texas. *Transactions of the American Fisheries Society* **116**:54–59 DOI [10.1577/1548-8659\(1987\)116<54:AAGAOS>2.0.CO;2](https://doi.org/10.1577/1548-8659(1987)116<54:AAGAOS>2.0.CO;2).
- Manickchand-Heileman SC, Kenny JS. 1990.** Reproduction, age, and growth of the whitemouth croaker *Micropogonias furnieri* (Desmarest 1823) in Trinidad waters. *Fishery Bulletin* **88**(3):523–529.
- Mason JE. 1998.** Declining rockfish lengths in the Monterey Bay, California, recreational fishery, 1959–94. *Marine Fisheries Review* **60**:15–28.
- Mazerolle MJ. 2017.** AICcmodavg: model selection and multimodel inference based on (Q)AIC(c). *R package*. version 2.1-1. Available at <https://cran.r-project.org/package=AICcmodavg>.
- Mendivil-Mendoza JE, Rodríguez-Domínguez G, Castillo-Vargasmachuca SG, Ortega-Lizárraga GG, Aragón-Noriega EA. 2017.** Estimación de los parámetros de crecimiento de la curvina golfina *Cynoscion othonopterus* (pisces: sciaenidae) por medio de los casos del modelo de schnute. *Interciencia* **42**:570–577.
- Murphy MD, Taylor RG. 1989.** Reproduction and growth of black drum, *Pogonias cromis*, in Northeast Florida. *Northeast Gulf Sci* **10**(2):127–137.
- Murphy MD, Taylor RG. 1990.** Reproduction, growth, and mortality of red drum *Sciaenops ocellatus* in Florida waters. *Fishery Bulletin* **88**:531–542.
- Murphy MD, Taylor RG. 1994.** Age, growth, and mortality of spotted seatrout in Florida waters. *Transactions of the American Fisheries Society* **123**:482–497 DOI [10.1577/1548-8659\(1994\)123<0482:AGAMOS>2.3.CO;2](https://doi.org/10.1577/1548-8659(1994)123<0482:AGAMOS>2.3.CO;2).
- Myers RA, Bowen KG, Barrowman NJ. 1999.** Maximum reproductive rate of fish at low population sizes. *Canadian Journal of Fisheries and Aquatic Sciences* **56**:2404–2419.
- Neilson JD. 1992.** Sources of error in otolith microstructure examination. In: Stevenson DK, Campana SE, eds. *Otolith microstructure examination and analysis*. *Canadian Special Publication of Fisheries and Aquatic Sciences*, vol. 117. Ottawa: Canada Communication Group - Publishing Supply and Services Canada, 115–125.
- Nieland DL, Thomas RG, Wilson CA. 2002.** Age, growth, and reproduction of spotted seatrout in Barataria Bay, Louisiana. *Transactions of the American Fisheries Society* **131**:245–259 DOI [10.1577/1548-8659\(2002\)131<0245:AGAROS>2.0.CO;2](https://doi.org/10.1577/1548-8659(2002)131<0245:AGAROS>2.0.CO;2).
- Ogle DH. 2017.** FSA: fisheries stock analysis. *R package*. version 0.8.16. Available at <https://cran.r-project.org/web/packages/FSA/index.html>.
- Ong JLL, Nicholas Rountrey A, Jane Meeuwig J, John Newman S, Zinke J, Gregory Meekan M. 2015.** Contrasting environmental drivers of adult and juvenile growth in a marine fish: implications for the effects of climate change. *Scientific Reports* **5**:10859 DOI [10.1038/srep10859](https://doi.org/10.1038/srep10859).
- Ong JLL, Rountrey AN, Zinke J, Meeuwig JJ, Grierson PF, O'Donnell AJ, Newman SJ, Lough JM, Trougan M, Meekan MG. 2016.** Evidence for climate-driven synchrony of marine and terrestrial ecosystems in northwest Australia. *Global Change Biology* **22**:2776–2786 DOI [10.1111/gcb.13239](https://doi.org/10.1111/gcb.13239).
- Ortiz R, Mascareñas-Osorio I, Román M, Castro J. 2016.** Biological and fisheries monitoring of the Gulf Corvina in the Upper Gulf of California. DataMares. Interactive Resource DOI [10.13022/M38590](https://doi.org/10.13022/M38590).



- Pauly D. 2010.** Gasping fish and panting squids: oxygen, temperature and the growth of water breathing animals. In: Kinne O, ed. *Excellence in ecology: book 22*. Oldendorf/Luhe: International Ecology Institute, 216.
- Piner KR, Lee H-H, Maunder MN. 2016.** Evaluation of using random-at-length observations and an equilibrium approximation of the population age structure in fitting the von Bertalanffy growth function. *Fisheries Research* **180**:128–137 DOI [10.1016/j.fishres.2015.05.024](https://doi.org/10.1016/j.fishres.2015.05.024).
- Punt AE, Haddon M, McGarvey R. 2016.** Estimating growth within size-structured fishery stock assessments: What is the state of the art and what does the future look like? *Fisheries Research* **180**:147–160 DOI [10.1016/j.fishres.2014.11.007](https://doi.org/10.1016/j.fishres.2014.11.007).
- Ratkowsky DA. 1986.** Statistical properties of alternative parameterizations of the von Bertalanffy growth curve. *Canadian Journal of Fisheries and Aquatic Sciences* **43**:742–747 DOI [10.1139/f86-091](https://doi.org/10.1139/f86-091).
- Reed E. 2017.** Relationships between climate, growth and fisheries production in a commercially exploited marine fish. Master's Thesis, The University of Texas at Austin.
- Ricker WE. 1975.** Computation and interpretation of biological statistics of fish populations. *Bulletin of the Fisheries Research Board of Canada* **191**(1975):1–382.
- Robertson DR, Allen GR. 2008.** Shorefishes of the Tropical Eastern Pacific online information system. Version 1.0. Balboa: Smithsonian Tropical Research Institute.
- Rodriguez R, Hammann MG. 1997.** Age and growth of totoaba, *Totoaba macdonaldi* (Sciaenidae), in the upper Gulf of California. *Fishery Bulletin* **95**(3):620–628.
- Roff DA. 1980.** A motion for the retirement of the von Bertalanffy function. *Canadian Journal of Fisheries and Aquatic Sciences* **37**:127–129 DOI [10.1139/f80-016](https://doi.org/10.1139/f80-016).
- Román-Rodríguez MJ. 2000.** Estudio poblacional del chano norteño, *Micropogonias megalops* y la curvina Golfina *Cynoscion othonopterus* (Gilbert) (Pisces: Sciaenidae), especies endémicas del alto Golfo California, México. Instituto del Medio Ambiente y Desarrollo Sustentable del Estado de Sonora. Informe final SNIB-CONABIO proyecto No. L298. Mexico, D.F. Available at <http://www.conabio.gob.mx/institucion/cgi-bin/datos.cgi?Letras=L&Numero=298>.
- Ross JL, Stevens TM, Vaughan DS. 1995.** Age, growth, mortality, and reproductive biology of Red Drums in North Carolina Waters. *Transactions of the American Fisheries Society* **124**:37–54 DOI [10.1577/1548-8659\(1995\)124<0037:AGMARB>2.3.CO;2](https://doi.org/10.1577/1548-8659(1995)124<0037:AGMARB>2.3.CO;2).
- Rowell K, Flessa KW, Dettman DL, Roman M. 2005.** The importance of Colorado River flow to nursery habitats of the Gulf Corvina (*Cynoscion othonopterus*). *Canadian Journal of Fisheries and Aquatic Sciences* **62**:2874–2885 DOI [10.1139/f05-193](https://doi.org/10.1139/f05-193).
- Ruelas-Peña JH, Valdez-Muñoz C, Aragón-Noriega E. 2013.** La pesquería de la corvina golfina y las acciones de manejo en el Alto Golfo de California, México. *Latin American Journal of Aquatic Research* **41**:498–505.
- Rutherford ES, Thue EB, Buker DG. 1982.** *Population characteristics, food habits and spawning activity of spotted seatrout, Cynoscion Nebulosis, in Everglades National Park, Florida*. National Park Service, South Florida Research Center, Everglades National Park.

- Santos RS, Costa MRda, Araújo FG, Santos RS, Costa MRda, Araújo FG. 2017.** Age and growth of the white croaker *Micropogonias furnieri* (Perciformes: Sciaenidae) in a coastal area of Southeastern Brazilian Bight. *Neotropical Ichthyology* **15**:e160131 DOI [10.1590/1982-0224-20160131](https://doi.org/10.1590/1982-0224-20160131).
- Schnute J. 1981.** A versatile growth model with statistically stable parameters. *Canadian Journal of Fisheries and Aquatic Sciences* **38**:1128–1140 DOI [10.1139/f81-153](https://doi.org/10.1139/f81-153).
- Schnute JT, Richards LJ. 1990.** A unified approach to the analysis of fish growth, maturity, and survivorship data. *Canadian Journal of Fisheries and Aquatic Sciences* **47**:24–40 DOI [10.1139/f90-003](https://doi.org/10.1139/f90-003).
- Schwarz G. 1978.** Estimating the dimension of a model. *Annals of Statistics* **6**(2):461–464 DOI [10.1214/aos/1176344136](https://doi.org/10.1214/aos/1176344136).
- Shono H. 2000.** Efficiency of the finite correction of Akaike's information criteria. *Fisheries Science* **66**(3):608–610 DOI [10.1046/j.1444-2906.2000.00095.x](https://doi.org/10.1046/j.1444-2906.2000.00095.x).
- Van Poorten BT, Walters CJ. 2016.** How can bioenergetics help us predict changes in fish growth patterns? *Fisheries Research* **180**:23–30 DOI [10.1016/j.fishres.2015.07.031](https://doi.org/10.1016/j.fishres.2015.07.031).
- Von Bertalanffy L. 1938.** A quantitative theory of organic growth (inquiries on growth laws II). *Human Biology* **10**:181–213.
- Walker TI, Taylor BL, Hudson RJ, Cottier JP. 1998.** The phenomenon of apparent change of growth rate in gummy shark (*Mustelus antarcticus*) harvested off southern Australia. *Fisheries Research* **39**(2):139–63 DOI [10.1016/S0165-7836\(98\)00180-5](https://doi.org/10.1016/S0165-7836(98)00180-5).
- Wang YG, Thomas MR, Somers IF. 1995.** A maximum likelihood approach for estimating growth from tag–recapture data. *Canadian Journal of Fisheries and Aquatic Sciences* **52**(2):252–259 DOI [10.1139/f95-025](https://doi.org/10.1139/f95-025).
- Weatherley AH. 1990.** Approaches to understanding fish growth. *Transactions of the American Fisheries Society* **119**:662–672 DOI [10.1577/1548-8659\(1990\)119<0662:ATUFG>2.3.CO;2](https://doi.org/10.1577/1548-8659(1990)119<0662:ATUFG>2.3.CO;2).
- Wells BK, Grimes CB, Field JC, Reiss CS. 2006.** Covariation between the average lengths of mature coho (*Oncorhynchus kisutch*) and Chinook salmon (*O. tshawytscha*) and the ocean environment. *Fisheries Oceanography* **15**:67–79 DOI [10.1111/j.1365-2419.2005.00361.x](https://doi.org/10.1111/j.1365-2419.2005.00361.x).
- Wells RJD, Kohin S, Teo SLH, Snodgrass OE, Uosaki K. 2013.** Age and growth of North Pacific albacore (*Thunnus alalunga*): implications for stock assessment. *Fisheries Research* **147**:55–62 DOI [10.1016/j.fishres.2013.05.001](https://doi.org/10.1016/j.fishres.2013.05.001).
- White AL. 2017.** Spatial and temporal heterogeneity in life history and productivity trends of Atlantic Weakfish (*Cynoscion regalis*) and implications to fisheries management. Master's Thesis, Virginia Tech.
- Wieting DS. 1989.** Age, growth, and fecundity of spotted seatrout (*Cynoscion nebulosus*) in Louisiana. Master's thesis, Louisiana State University, Baton Rouge.
- Williams JP, Allen LG, Steele MA, Pondella DJ. 2007.** El Niño periods increase growth of juvenile white seabass (*Atractoscion nobilis*) in the Southern California Bight. *Marine Biology* **152**:193–200 DOI [10.1007/s00227-007-0673-5](https://doi.org/10.1007/s00227-007-0673-5).