

INTERCOMPARISON OF DIFFERENT RAINFALL PRODUCTS AND VALIDATION OF WRF MODELLED RAINFALL ESTIMATION IN N-W HIMALAYA DURING MONSOON PERIOD

Adreja Roy^{1*}, Praveen K. Thakur¹, Neha Pokhriyal¹, Shiv Prasad Aggarwal¹, Bhaskar R Nikam¹, Vaibhav Garg¹, Pankaj R Dhote¹, Arpit Choksey¹

¹ IIRS, Indian Institute of Remote Sensing, 4 Kalidas road, Dehradun, India - iirs.gov.in

Commission V, SS: Atmosphere, Ocean, Weather and Climate

KEY WORDS: WRF, TRMM, GPM, IMD, ERA-Interim, FAR, POD, POFD, Bias, Error

ABSTRACT:

Extreme precipitation events are responsible for major floods in any part of the world. In recent years, simulations and projection of weather conditions to future, with Numerical Weather Prediction (NWP) models like Weather Research and Forecast (WRF), has become an imperative component of research in the field of atmospheric science and hydrology. The validation of modelled forecast is thus have become matter of paramount importance in case of forecasting. This study delivers an all-inclusive assessment of 5 high spatial resolution gridded precipitation products including satellite data products and also climate reanalysis product as compared to WRF precipitation product. The study was performed in river basins of North Western Himalaya (NWH) in India. Performance of WRF model is evaluated by comparing with observational gridded (0.25°×0.25°) precipitation data from Indian Meteorological Department (IMD). Other products include TRMM Multi Satellite Precipitation Analysis (TMPA) 3B42-v7 product (0.25°×0.25°) and Global Precipitation Measurement (GPM) product (0.1°×0.1°). Moreover, climate reanalysis rainfall product from ERA Interim is also used. Bias, Mean Absolute Error, Root Mean Square Error, False Alarm Ratio (FAR), Probability of False Detection (POFD), and Probability of Detection (POD) were calculated with particular rainfall thresholds. TRMM and GPM products were found to be sufficiently close to the observations. All products showed better performance in the low altitude areas i.e. in planes of Upper Ganga and Yamuna basin and Indus basin, and increase in error as topographical variation increases. This study can be used for identifying suitability of WRF forecast data and assessing performance of other rainfall datasets as well.

1. INTRODUCTION

1.1 Importance of Prediction of Monsoon Precipitation

The Indian summer monsoon is a main mechanism having a significant role in the global climate system and also towards the global water cycle (Trenberth et al., 2000). The south-west summer monsoon governs agricultural, energy and water resources sectors. Thus it is crucial for all applications to precisely estimate and predict the summer monsoon precipitation.

Variations in the pattern of precipitation have the most adverse impacts among all meteorological variables on the humanity. More precisely, the main concern is on the changes in extreme rainfall. As the intense precipitation events often causes disasters like flash floods, which in turn results in large-scale damage to the infrastructure, also on natural ecosystems.

Different researchers have performed a number of studies regarding the evaluation of satellite estimated rainfall products, as there are limitations in availability of continuous observed rainfall information at all locations. Especially the success of TRMM and GPM missions has been a debated topic in recent years. Prakash et al. (2018) found that GPM IMERG shows improvement in missed and false events over India. IMERG product also gives a better estimate of mean monsoon rainfall than TMPA product. On the other hand, a high correlation of 0.88 was found for TRMM by Bharti et al. (2016) with IMD gridded Rain gauge data over NWH region. TRMM 3B42 v7 showed high bias in the precipitation amount for extreme events but could capture the frequency.

1.2 Verification of Forecast from NWP models

During the past few years, the numerical weather predictions have gained improved performance with better skill score, as a consequence of the development of improved schemes of parameterization of model, higher computational efficiency, and data assimilation techniques (Mitra et al., 2013). Nevertheless, the improvement of skill for prediction of tropical monsoon has not been yet entirely comprehended. (Prakash et al., 2014). As there is sufficient amount of bias existing in case of modelling in rainy season in this region, truthful estimate of projection of climate change of Indian summer monsoon precipitation is not yet certain (Turner and Annamalai, 2012). Advancement of model is dependent on assessment of modelled precipitation which acts as an important feedback for this purpose. Validating the model accuracy against the observed gage data is in turn significant for some purposes (Ebert et al., 2007; Collins et al., 2013).

Real time weather conditions are taken as input to run atmospheric models in NWP to forecast the progression of weather. In fact, the atmosphere is conceptualized as a dynamic fluid in NWP models and thus they represent the behavior of the atmosphere by solving the equations of mechanics and thermodynamics (Yu et al., 2016).

In the performance assessment of the flood forecasting for previous flood events, the ambiguity in meteorological data is thus generally the major cause of uncertainty in the forecast of flood (Rossa et al., 2010). The outputs of the meteorological forecast tool Weather Research and Forecast (WRF) is taken as

principal input in the forecast time duration. Thus it is a basic requirement check the uncertainties is the WRF modelled data.

1.3 Objectives of the Study

This study aims to compare the performance and accuracy of different precipitation products, more specifically, satellite and reanalysis datasets, for the NWH region. Finally, it was intended to find a precipitation product suitable for long-term calibration and validation of hydrological models which can be used to produce flood forecast with WRF meteorological predictions. (Details of the WRF model of IIRS is given in: <http://www.dms.iirs.gov.in/>)

2. STUDY AREA AND DATASETS

2.1 Study Area

In this study, the North-Western Himalaya, consisting of the states of Jammu and Kashmir, Himachal Pradesh, Uttarakhand and parts of Punjab and Haryana, in India, also extending outside the country border across China or Tibet in East and portions of Pakistan lying in the catchment of Indus. NWH includes basins of Indus and its tributaries, namely, Jhelum, Ravi, Chenab, Beas, Sutlej and upper Ganga and its tributaries namely, Yamuna, Ramganga, Ghaghra, Kali. Heights in the region is found varying in a large range from a few hundred meters in the Siwalik Himalaya in the south to about 8000 meters in the Karakoram Himalaya in the farthest northern region (Bhutiyan et al., 2007). Precipitation in the NWH ensues because of westerly disturbances during the post-monsoon (Oct-Nov) and pre-monsoon (May-Jun) seasons and due to the southwest monsoon during June to September, each year. There occurs also a vast variation of yearly precipitation, in forms of rainfall and snowfall in parts of NWH. The region of whole NWH is shown in Figure 1. However, in this study, main focus was in Beas and Sutlej basins, which have well-known records of floods in past years. (Figure 2)

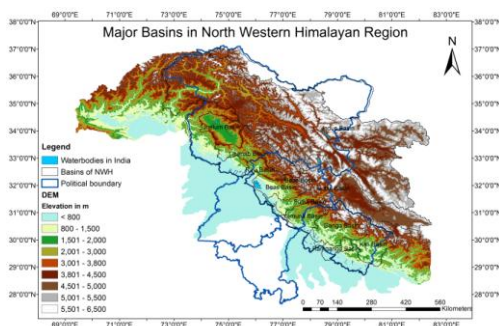


Figure 1: Topographical map of NWH and the major basins

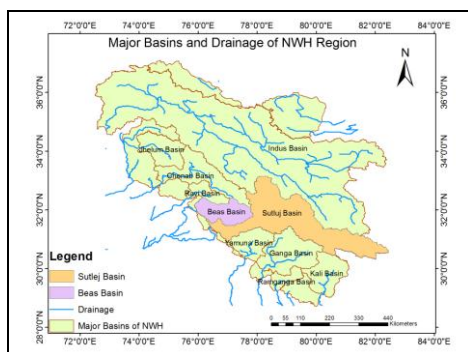


Figure 2: Drainage networks in NWH with highlighted Beas and Sutlej basins

2.2 Datasets Used

2.2.1 Ground Observation Reference Datasets

Precipitation gage data was only available for 4 stations in Beas basin, namely, Nadaun, Sujampur Tira, Palampur and Baijnath. Thus for reference dataset, observed point data could not be obtained. However, $0.25^\circ \times 0.25^\circ$ gridded precipitation product was procured for the monsoon seasons from the year 2000 to 2015. The main motivation of this study was to evaluate the reliability of the freely available gridded global precipitation products to be used as input in hydrological modelling in NWH region. In this regard, it is to be guaranteed that the rain gauge stations data used for deriving the gridded reference dataset (IMD) had not been utilized in the manufacturing of the products which are to be assessed against it. It is required for an independent analysis of all the products. (Duan et al., 2016)

2.2.2 Satellite Datasets

TRMM 3B42 v7 is a product derived by TRMM Multi Satellite Precipitation Analysis algorithm. It originally produces 3 hourly precipitation estimates at a spatial resolution of 0.25° for the tropical to temperate zones ($50^\circ\text{S} - 50^\circ\text{N}$). Datasets are available since 1998. In our study, as we focussed on daily comparison analyses, the derived daily product was used. This product presently is a combination of two products, namely, gauge adjusted combined estimate of microwave and IR, and also combined estimates of microwave-IR-gauge rainfall at monthly scale.

GPM IMERG product, used in this study, is also a similar precipitation product, which combines Microwave, IR and gauge estimates. The intent of this algorithm is to first inter-calibrate the microwave estimates of all satellites in this constellation, merge, and interpolate them together with microwave-calibrated IR estimates of satellite derived precipitation, gauge analyses, and other potential estimators of precipitation at a higher spatial and temporal resolution with a global coverage area. The result is the product of 0.1° spatial resolution with 30mins time interval having a full coverage for $60^\circ\text{S} - 60^\circ\text{N}$ and a partial coverage for the rest of the globe. For the current study, derived daily product was used.

In our study we used CPC daily product ($0.50^\circ \times 0.50^\circ$ grid) namely, Global Daily Unified Gauge-Based Analysis of Precipitation. This data set is disseminated by NOAA Climate Prediction Center (CPC) and it is a component of the CPC Unified Precipitation Project. This project primarily aims at creation of a suite of combination of rainfall estimates having a reliable quantity and upgraded quality which unifies all the dataset inventories available at CPC. It also uses Optimal Interpolation objective analysis approach which adds on its advantages.

2.2.3 Climate Reanalysis Datasets

ERA-Interim project is one major global climatic reanalysis products from 1979 onwards, incessantly being restructured in the real time. The structure comprises of 4D analysis (4D-Var) with an analysis window of 12-hours. The spatial resolution of the available data sets is 80 km (0.75° grids) on 60 vertical levels from the surface up to 0.1 hPa. In our study 6-hourly precipitation at a downscaled resolution of 0.50° was obtained and daily rainfall estimates was derived from that.

2.2.4 NWP Product

WRF can yield predictions on the basis of real-time atmospheric scenarios or ideal climatic conditions, which is useful for research purposes. As the other national/regional climatological centres (real-time forecasting organizations) IIRS has its own operational WRF forecast model set up on two domains in NWH region, one of coarser resolution (9km) and one of higher resolution (3km), which gives sufficiently accurate rainfall prediction. In the current work, WRF running in 3 day forecast mode, running daily at 12 UTC, with boundary conditions from Global Forecast System (GFS) 0.25 degree 6 hourly time step, 72 hour forecast products, has been used for the purpose of forecasted meteorological input. Both 3 hourly (inner domain – 3 km resolution) and 6 hourly (outer domain – 9 km resolution) forecasts were produced by this setup. Only 24 hour forecast product is taken from WRF daily simulations. In order to use this forecast in hydrological simulations for forecasting food scenario in near future extent, the validation of this product against other datasets is a certain requirement. Moreover, the rainfall product having the most similarity with this NWP estimate is also to be assessed as the hydrological model needs long-term calibration and validation. For more detailed description of the model, the website www.dms.iirs.gov.in is to be referred.

3. EVALUATION METHODS

There are numerous methods available to verify the accuracy of forecast. However, in this study, the approach based on Categorical Skill Score was used. Ranges of unremitting forecast values can characterize these categories, mainly by implementing some thresholds (Mariani and Casaioli, 2008). Here, "Categorical dichotomous forecasts" were dealt with by incorporating single threshold s at a time. A 2x2 contingency table is shown in Figure 3.

Event forecast	Event observed		Marginal total
	Yes	No	
Yes	Hit	False alarm	Fc Yes
No	Miss	Correct non-event	Fc No
Marginal total	Obs Yes	Obs No	Sum total

↕

Event forecast	Event observed		Marginal total
	Yes	No	
Yes	a	b	a + b
No	c	d	c + d
Marginal total	a + c	b + d	a + b + c + d = n

Figure 3. Contingency Table for Forecast Verification Parameters Estimation (Source: Mariani and Casaioli, 2008)

3.1 Probability of detection (POD) or Hit Rate (HR):

$$POD = HR = \frac{a}{a+c} \quad (1)$$

The hit rate (HR) lies between 0 and 1, where 1 denotes a 'perfect forecast'. Hit Rate might usually be enhanced by methodically over forecasting the frequency of the event.

3.2 False alarm ratio (FAR):

$$FAR = \frac{b}{a+b} \quad (2)$$

It lies between 0 and 1. A perfect score is 0. It is not imperative of the events missed in forecasting. It is an incomplete score and it is to be stated along with the Hit Rate.

3.3 Bias:

$$Bias = \frac{a+b}{a+c} \quad (3)$$

An unbiased forecast is said to be made when the event is predicted with precisely the same frequency with that of the observed. Thus, frequency bias value of 1 signifies the best score. Bias > 1 points to 'over-forecasting' and Bias < 1 indicate 'under-forecasting'.

3.4 Probability of False Detection (POFD):

$$POFD = \frac{b}{b+d} \quad (4)$$

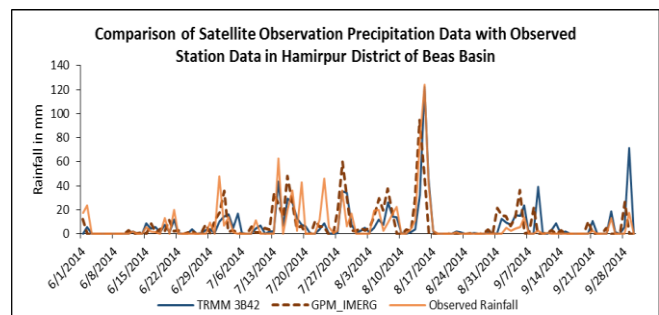
'Probability of False Detection' is sometimes called as 'False Alarm Rate'. Lower values of POFD denote that the number of false alarm events is fewer and the accurateness of the forecasts is greater.

These abovementioned 4 parameters were calculated both sub-basin wise and also for each major basin along with Mean Absolute Error (MAE) and Root Mean Square Error (RMSE). All the datasets used are in grid-based format. This is why IMD dataset was procured at 0.25° gridded form. All datasets being in grid-based format, no further interpolation technique was needed to be used. Apart from, the aforementioned 6 parameters, the coefficient of determination R2 was estimated to determine the extent of collinearity of the precipitation product as compared to the IMD rainfall product.

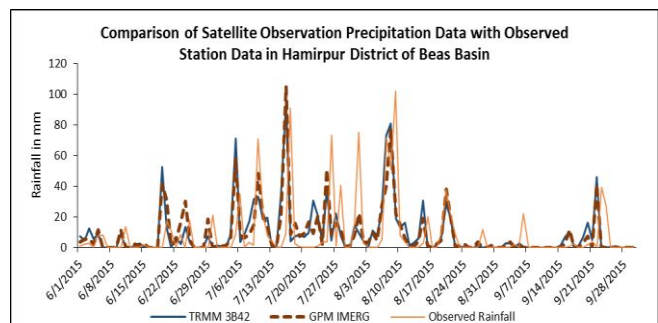
4. RESULTS AND DISCUSSION

4.1 Evaluation of the Satellite Derived Products

The plots of TRMM and GPM rainfall time series for monsoon seasons along with the observed data, for Hamirpur District in Beas basin, are shown in Figure 4.



(a)



(b)

Figure 4: Comparison of TRMM 3B42 and GPM IMERG Rainfall Products with Observed Data in (a) 2014, and (b) 2015

For long-term continuous precipitation in the whole monsoon season, both TRMM and GPM precipitation shows more or less similar patterns as can be seen from the time series plots in Fig. 4. Thus, it was observed, TMPA and GPM IMERG estimates gives a good estimate of rainfall occurred in case of specific extreme events, as the graphs depict clearly that the higher peaks were more explicitly endorsed by the satellite data retrieval algorithms.

Moreover these TMPA and GPM datasets give R^2 values 0.27 and 0.26 respectively, when compared with gridded IMD data as given in the scatter plots in Fig. 6. Both the dataset performs almost similar, where TMPA provides slightly better assessment of rainfall for Beas and Sutlej basins. As per the research performed by Maggioni et al. (2016), TRMM 3B42-V7 records the nearest values to ground observation data in Indian subcontinent, and hence, could be considered useful for monsoon studies in this region because of its lesser underestimation, higher correlation, and low error estimates, in comparison to the other products. Again, as per a study conducted by Tang et al. (2016), the post-real-time corrections commendably reduce the biasness of Day-1 IMERG and 3B42v7 to single digits of underestimation from above 20% overestimation of 3B42RT. Indications from the Taylor's diagram prepared depicted that IMERG day 1 product and 3B42-v7 product are analogous at grid and basin scales. While, sometimes, the GPM IMERG product outperforms the standard products of TMPA, which in turns, points to a capable outlook of hydrological effectiveness and a necessary continuity from TRMM products inheritances to GPM IMERG products.

Moreover, ERA Interim data was also compared with observed gage data (Fig. 5). It was seen that ERA Interim climate reanalysis data is not a great choice for small scale local events. As can be seen in Fig. 5, it missed most of the peaks as compared to the average estimate of gaging station data obtained for Nadaun and Sujampur Tira stations in Hamirpur District, which was compared with the area averaged ERA Interim data for Hamirpur district. However, this is due to the fact that ERA Interim dataset downloaded is having a coarse resolution of 0.50° in both the directions. Thus, averaging over a large area is already present there in the data. More averaging were included while carrying out zonal average over the district, whereas, the observed gauging stations were present for only 2 stations over that region, Nadaun and Sujampur Tira during 2013 and with 3 stations (Bhota as 3rd AWS station) in 2014-15. Thus, it is very likely that the estimate used as observed precipitation was not the 100% true representative of actual average condition of rainfall. For that reason, the discrepancy due spatial variations in rainfall may have caused the deviance. Thus in future both denser rain gauge data and high spatial resolution re-analyses data products are needed for more realistic representation of rainfall in NWH.

This fact was more emphasized by validating ERA Interim estimate over whole Beas and Sutlej basins against IMD gridded precipitation data. It was found that ERA Interim has a better linear relationship with the reference data than the other datasets compared, having a R^2 value 0.40, for the monsoon seasonal rainfall during the recent years (2010 to 2015). For a basin scale analysis, the average correlation coefficients for Beas, Sutlej and Ganga basins were also calculated for the monsoon season for 2012 to 2015 and are shown below in Table 1.

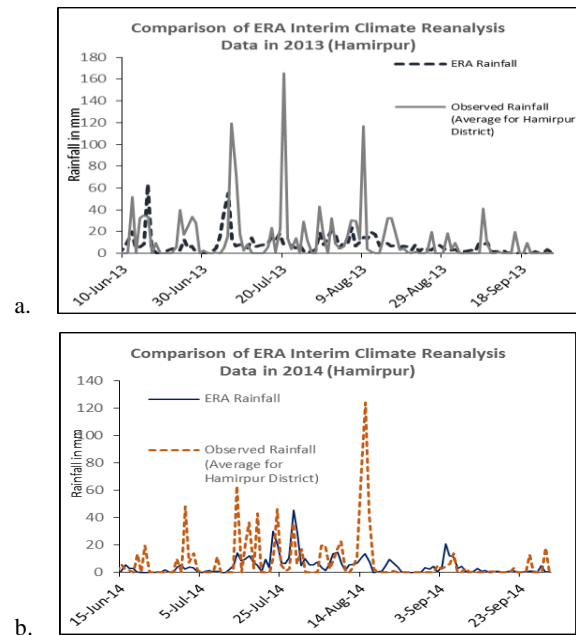


Figure 5: Plot of time series rainfall data from ERA and gauging station in (a) 2013 & (b) 2014, in Hamirpur

Basins	R^2 values			
	TRMM	GPM	ERA	CPC
Beas	0.40	0.16	0.30	0.41
Sutlej	0.18	0.55	0.55	0.37
Ganga	0.13	0.07	0.32	0.12

Table 1. Correlation coefficients for different products compared with reference data

Scatter plots of daily precipitation from all 4 gridded products for Beas and Sutlej basins combined is shown below in Fig. 6. It is observed that there exist large scatters for more or less all the products, which depicts the lesser agreement of evaluated products with the observed product. This poor agreement of the rainfall products can be attributed to one or many of the following reasons: sampling error from satellite data, errors incorporated during estimation of precipitation by the specific algorithm from the specific platforms like rain gauge analyses, climate reanalyses, satellite, climate models, errors involved in the algorithms implemented for combining multi-source estimates, errors intruded due to bias correction, and also by the erroneous gage data used in the algorithm for correcting bias. (Shen et al., 2010; Duan et al., 2016).

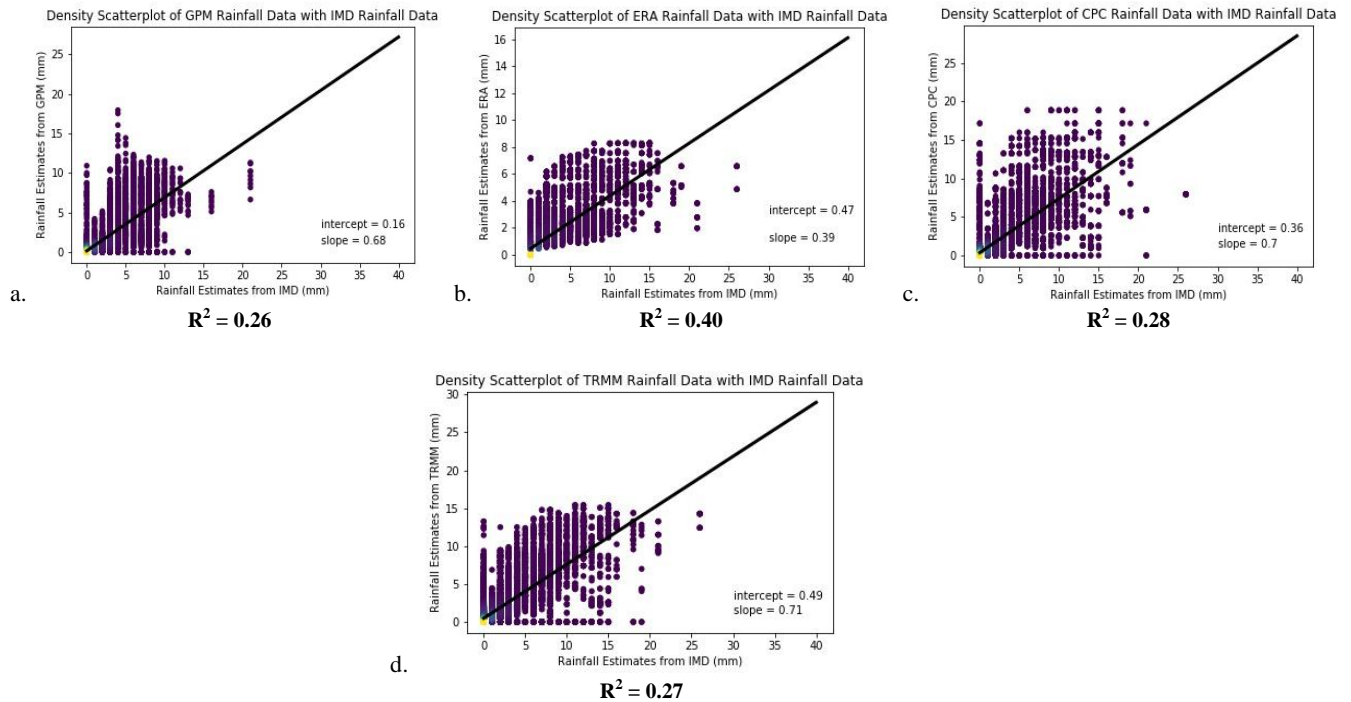


Figure 6: Scatter plots of daily precipitation products with observational rainfall product (with average R^2 values)

From the comparison of these 4 datasets infers some basic points. ERA Interim dataset is better for larger spatial and temporal scales. However, for localized events, satellite datasets is found better. Another dataset, used for Indian subcontinent by many researchers in their study as the source of precipitation, was also incorporated in our current study. It was found that it was a good source of precipitation for the Sutlej basin, but not very much precise for Beas basin. However, CPC dataset was found having a high bias value for both the basins. Further it is to be noted that, basin level zonal statistics may lead to some spatial averaging effect, which can impact the overall values of used statistical parameters.

Basin	Product	MAE	RMSE	BIAS	POD	POFD	FAR
		mm/d	mm/d	--	--	--	--
Beas	TRMM 3B42	8.94	16.91	0.56	0.09	0.04	0.87
	GPM IMERG	8.14	15.75	1.27	0.23	0.10	0.82
	CPC	7.85	15.93	0.84	0.12	0.15	0.81
	ERA Interim	6.52	12.63	0.78	0.14	0.29	0.91
	TRMM 3B42	4.59	9.41	0.28	0.04	0.01	0.88
Sutlej	GPM IMERG	2.91	5.73	3.77	0.18	0.02	0.93
	CPC	4.32	8.92	1.02	0.09	0.03	0.85
	ERA Interim	4.26	8.15	0.65	0.14	0.01	0.83

Table 2: Summary Statistics of Estimated Parameters

4.2 Validation of WRF Derived Product

The WRF forecast data was compared with the satellite products of TRMM 3B42v7 ($0.25^\circ \times 0.25^\circ$) and GPM IMERG product ($0.1^\circ \times 0.1^\circ$) by same set of parameters. The comparison has been performed on all 8 basins of NWH region. In this case, the validation of forecast was performed for a number of discrete events, instead of continuous long timescales. The calculated parameter values have been shown in graphs below in Fig. 9 and 10 for events of 2015 and 2017 respectively.

It was found that, for some basins, TMPA 3B42 product is more close to the used forecast product of the current WRF model,

whereas in other basins, GPM product has less error in it, in terms of rainfall. For Sutlej, Ganga, Chenub and Ravi basins, GPM product is having better match with WRF, whereas in Indus and Beas basins region, WRF product is more close to TRMM observed rainfall. For, Beas basin, in case of specific rainfall events RMSE of WRF rainfall data w.r.t. TRMM product is 14.1 mm and MAE comes around 7.2 mm, whereas w.r.t. GPM product, RMSE and MAE became 17.3 mm and 9.1 mm respectively, while analysed for continuous observations in whole monsoons. Such kind of analyses gives overall accuracy assessment of the NWP model developed.

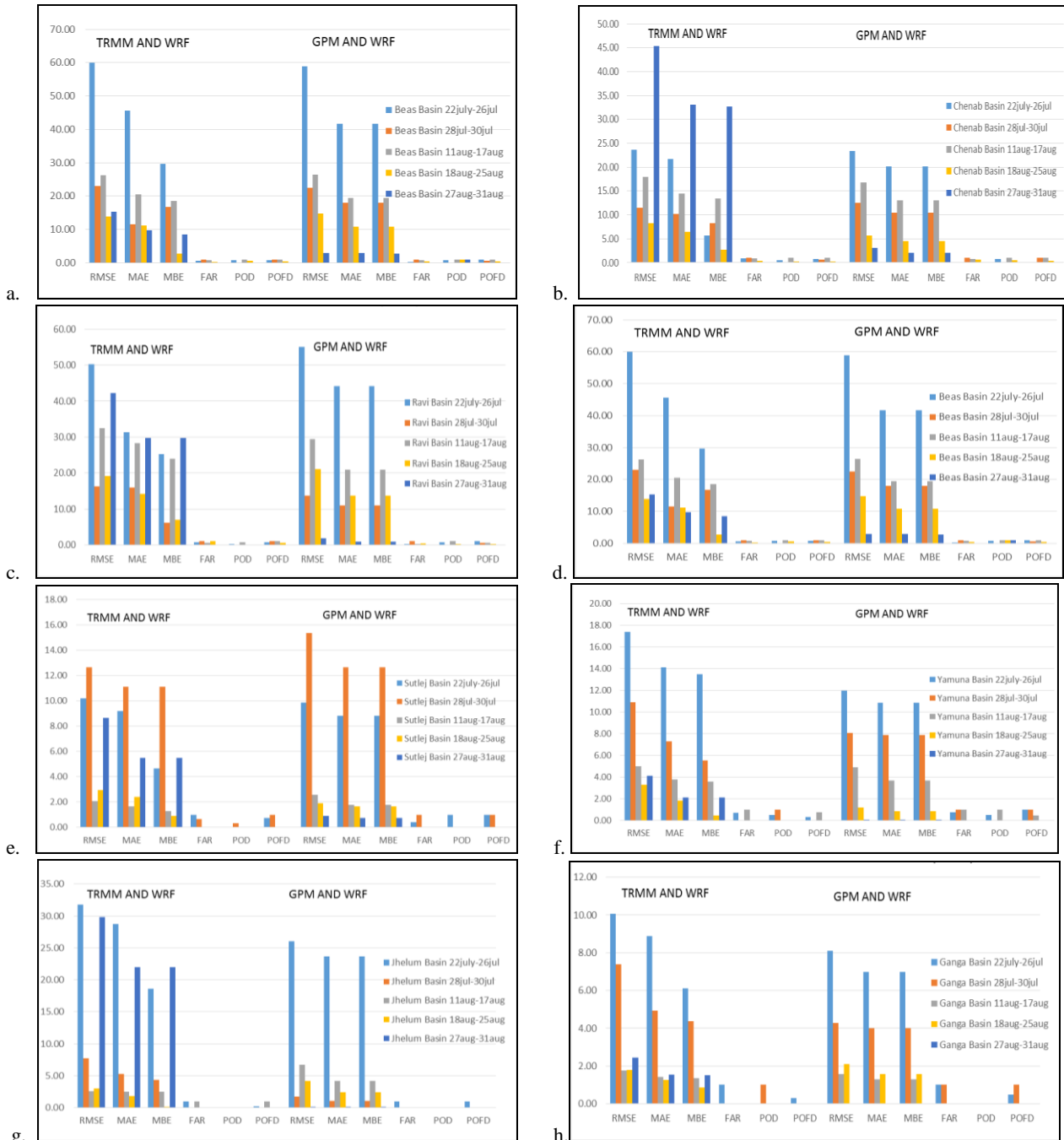
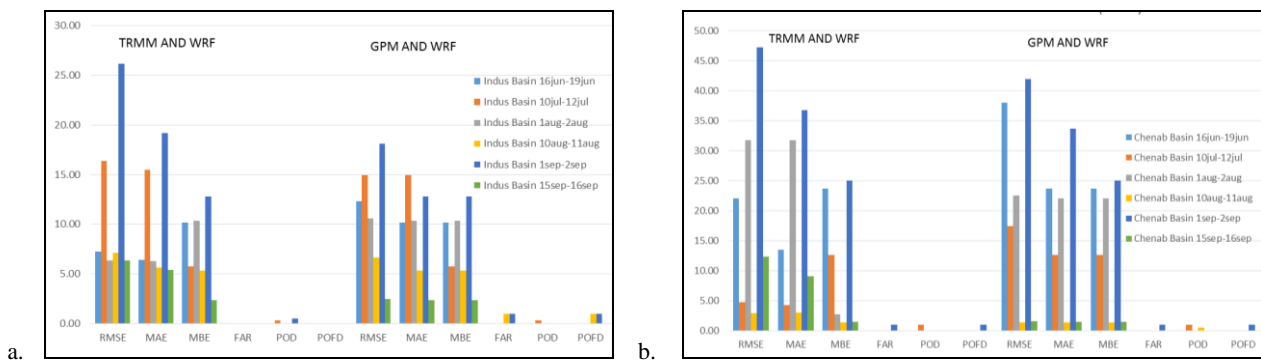


Figure 9: WRF data verification w.r.t. satellite products for (a) Indus, (b) Chenub, (c) Ravi, (d) Beas, (e) Sutlej, (f) Yamuna, (g) Jhelum, (h) Upper Ganga basins in the year 2015



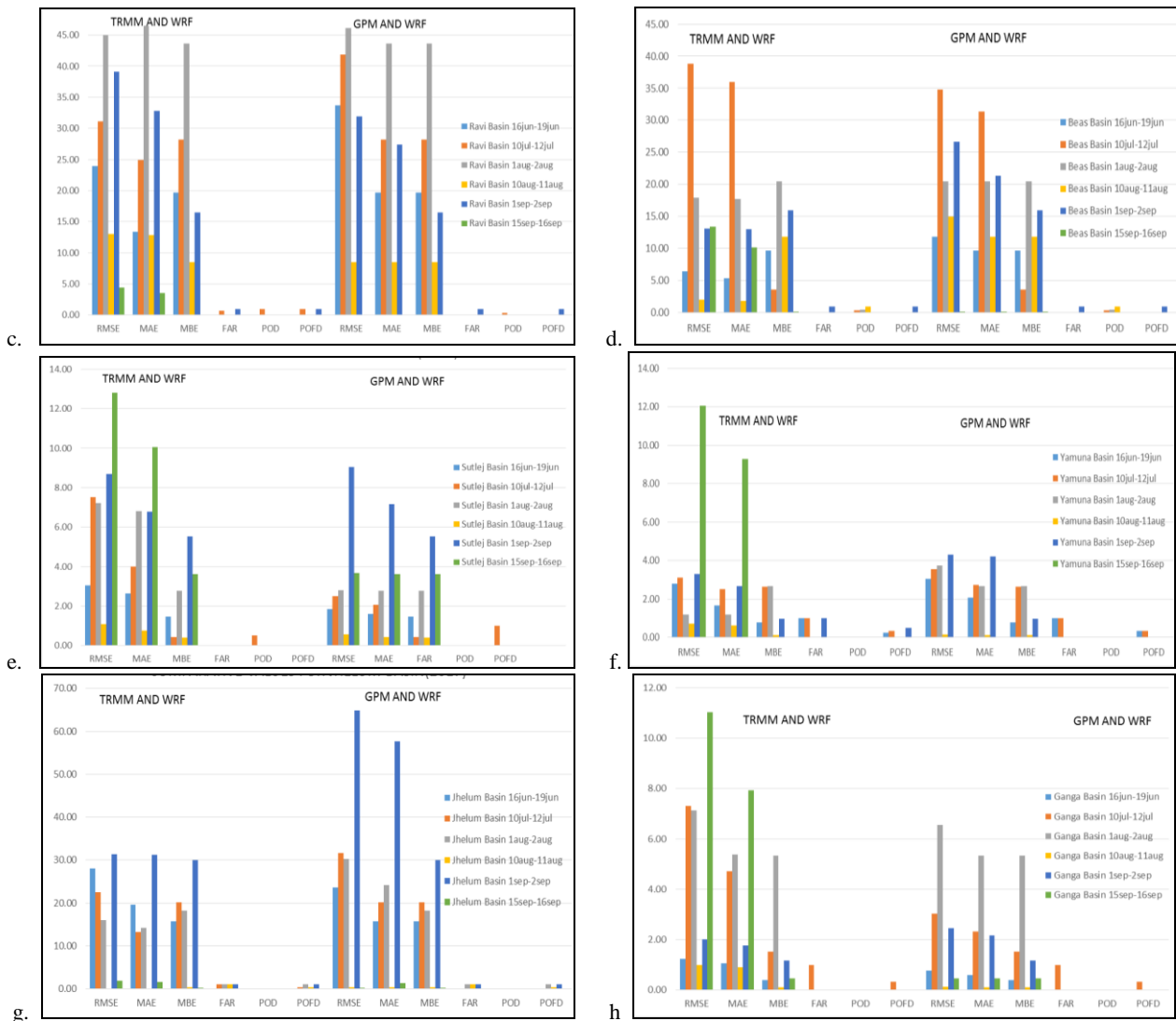


Figure 10: WRF data verification w.r.t. satellite products for (a) Indus, (b) Chenub, (c) Ravi, (d) Beas, (e) Sutlej, (f) Yamuna, (g) Jhelum, (h) Upper Ganga basins in the year 2017

5. CONCLUSION

In the present study, we conducted an all-inclusive evaluation of four types of precipitation products for NWH region in terms of some verification metrics. This study indicates the suitability of all 4 types of precipitation products evaluated in specific locations for daily timescales, in recent years (2010-2015). The products include TRMM 3B42, GPM IMERG, ERA Interim climate reanalysis and CPC Raingauge-based Precipitation products.

It was observed that TMPA product was the overall best estimate as it is having the least bias value among all 4, while GPM product is found to have sufficient bias error induced in it. ERA Interim also had relatively less bias for both Beas and Sutlej basins. However, instantaneous and localized peaks of extreme rainfall events could not be identified with coarse resolution ERA Interim product, in which, GPM estimated rainfall provided better measurements due to fine resolution (0.1°). Least average RMSE is found in ERA Interim product on a basin scale, and largest RMSE is observed in case of TMPA product.

This study acts as a tool which can guide to choose an alternative source for precipitation information for localized hydrological phenomena, like floods. In our further studies, flood forecasting system was developed, which uses WRF model forecast meteorological dataset as an input to the hydrological model. Thus, it was very much essential to verify the accuracy of the other precipitation products to find the most suitable meteorological dataset which provides similar patterns of rainfall as the already developed WRF model, and also which is the most accurate in terms of verification metrics, in order to obtain a long-term meteorological dataset to perform calibration and validation of the model, over whole NWH region. As the basins boundary extends beyond the political boundary of India, IMD product could not be used to get the long-term meteorological information for the purpose mentioned. Obviously, some other factors is also there to look upon in order to decide for the most suitable product for calibration and validation purpose, which is, of course, out of the scope of the current study.

However, the outcomes evidently illustrate that there can be further improvement of the precipitation estimates for all 4 rainfall products, in terms of spatial resolution and sub-daily

timescale. More detailed study with other precipitation products like CHIRPS, INSAT 3D Hydro-estimator, APHRODITE etc. can be performed to find the suitability of these datasets in a similar manner. It is possible to carry out spatial downscaling methods which will provide precipitation estimates at finer resolution (e.g. 1 km). There are a number of spatial downscaling approaches, but mostly these techniques were developed for larger timescales, like annual or monthly scales (Chen et al., 2015). Thus, the future scope of the related works should be focussed to develop fruitful spatial downscaling technique for meteorological products at daily to 3 hourly time scale.

REFERENCES

- Bharti, V., Singh, C., Ettema, J. and Turkington, T.A.R., 2016. Spatiotemporal characteristics of extreme rainfall events over the Northwest Himalaya using satellite data. *International journal of climatology*, 36(12), pp.3949-3962. doi: 10.1002/joc.4605
- Bhutiyan, M. R., Kale, V. S., Pawar, N. J., 2007. Long-term trends in maximum, minimum and mean annual air temperatures across the Northwestern Himalaya during the twentieth century. *Climatic Change*, 85(1–2), 159–177. doi:10.1007/s10584-006-9196-1
- Chen, C., Zhao, S., Duan, Z., Qin, Z., 2015. An improved spatial downscaling procedure for TRMM 3B43 precipitation product using geographically weighted regression. *IEEE Journal of Selected Topics in Applied Earth Observations and Remote Sensing*. 8(9):4592-604.
- Collins, M., Achuta Rao, K., Ashok, K., Bhandari, S., Mitra, A. K., Prakash, S., Srivasatva, R., Turner, A., 2013. Observational challenges in evaluating climate models. *Nat. Clim. Change* 3(11): 940–941, doi: 10.1038/nclimate2012.
- Duan, Z., Liu, J., Tuo, Y., Chiogna, G., Disse, M., 2016. Evaluation of eight high spatial resolution gridded precipitation products in Adige Basin (Italy) at multiple temporal and spatial scales. *Science of The Total Environment*, 573, pp.1536-1553.
- Ebert, E. E., Janowiak, J E., Kidd, C., 2007. Comparison of near real-time precipitation estimates from satellite observations and numerical models. *Bull. Am. Meteorol. Soc.* 88: 47–64.
- Koriche, S. A., Rientjes, T. H. M., 2016. Application of satellite products and hydrological modelling for flood early warning. *Physics and Chemistry of the Earth*. 93, 12–23. <https://doi.org/10.1016/j.pce.2016.03.007>
- Maggioni, V., Meyers, P. C., Robinson, M. D., 2016. A Review of Merged High-Resolution Satellite Precipitation Product Accuracy during the Tropical Rainfall Measuring Mission (TRMM) Era. *Journal of Hydrometeorology*, 17(4), 1101–1117. <https://doi.org/10.1175/JHM-D-15-0190.1>
- Mariani, S., Casaioli, M., 2008. Forecast Verification: A Summary Of Common Approaches And Examples Of Application. Trento. Retrieved from http://www.ing.unitn.it/dica/tools/download/Quaderni/Foralps_TR_5.pdf
- Mitra, A. K., Momin, I. M., Rajagopal, E. N., Basu, S., Rajeevan, M. N., Krishnamurti, T. N., 2013. Gridded daily Indian monsoon rainfall for 14 seasons: merged TRMM and IMD gauge analyzed values. *J. Earth Syst. Sci.* 122: 1173–1182, doi: 10.1007/s12040-013-0338-3.
- Prakash, S., Mitra, A.K., Momin, I. M., Rajagopal, E. N., Basu, S., Collins, M., Turner, A. G., Achuta Rao, K., Ashok, K., 2015. Seasonal intercomparison of observational rainfall datasets over India during the southwest monsoon season. *International Journal of Climatology*, 35(9), pp.2326-2338.
- Prakash, S., Mitra, A.K., AghaKouchak, A., Liu, Z., Norouzi, H. and Pai, D.S., 2016. A preliminary assessment of GPM-based multi-satellite precipitation estimates over a monsoon dominated region. *Journal of Hydrology*, 556 (2018), pp. 865-876. <https://doi.org/10.1016/j.jhydrol.2016.01.029>
- Rossa, A., Haase, G., Keil, C., Alberoni, P., Ballard, S., Bech, J., Salonen, K., 2010. Propagation of uncertainty from observing systems into NWP: COST-731 Working Group 1. *Atmos. Sci. Let*, 11, 145–152. <https://doi.org/10.1002/asl.274>
- Shen, Y., Xiong, A., Wang, Y., Xie, P., 2010. Performance of high-resolution satellite precipitation products over China. *Journal of Geophysical Research: Atmospheres*, 115(D2).
- Shen, Y., Xiong, A., 2016. Validation and comparison of a new gauge-based precipitation analysis over mainland China. *International Journal of Climatology*, 36(1):252-65.
- Tang, G., Zeng, Z., Long, D., Guo, X., Yong, B., Zhang, W., Hong, Y., 2016. Statistical and Hydrological Comparisons between TRMM and GPM Level-3 Products over a Midlatitude Basin: Is Day-1 IMERG a Good Successor for TMPA 3B42V7?. *Journal of Hydrometeorology*, 17(1), 121–137. <https://doi.org/10.1175/JHM-D-15-0059.1>
- Trenberth, K. E., Stepaniak, D. P., Caron, J. M., 2000. The global monsoon as seen through the divergent atmospheric circulation. *J. Clim.* 13: 3969–3993.
- Turner, A. G., & Annamalai, H. (2012). Climate change and the South Asian summer monsoon. *Nature Climate Change*, 2(8), 587–595. <https://doi.org/10.1038/nclimate1495>
- Yu, W., Nakakita, E., & Jung, K. (2016). Flood Forecast and Early Warning with High-Resolution Ensemble Rainfall from Numerical Weather Prediction Model. *Procedia Engineering*, 154, 498–503. <https://doi.org/10.1016/j.proeng.2016.07.544>