



Assessment of Paraspinal Muscle Atrophy Percentage after Minimally Invasive Transforaminal Lumbar Interbody Fusion and Unilateral Instrumentation Using a Novel Contralateral Intact Muscle-Controlled Model

Luis Alberto Ortega-Porcayo^{1,2}, Andres Leal-López³, Miroslava Elizabeth Soriano-López⁴, Carlos Francisco Gutiérrez-Partida⁵, Luis Rodolfo Ramírez-Barrios⁵, Sergio Soriano-Solis⁵, Manuel Rodríguez-García⁵, Hector Antonio Soriano-Solis⁶, José Antonio Soriano-Sánchez⁵

¹Neurological Surgery, Hospital Angeles Pedregal, Mexico City, Mexico

²Universidad Anáhuac, Mexico City, Mexico

³Universidad de San Carlos de Guatemala, Quetzaltenango, Guatemala

⁴University of Toronto, Toronto, Canada

⁵Spine Clinic, Neurological Center, American British Cowdray Medical Center, Mexico City, Mexico

⁶Department of Orthopedics, Hospital Central Nacional PEMEX Norte, Mexico City, Mexico

Study Design: Retrospective comparative clinical study.

Purpose: This study aimed to assess paraspinal muscle atrophy in patients who underwent minimally invasive transforaminal lumbar interbody fusion (MI-TLIF) and unilateral pedicle screw fixation using a novel contralateral intact muscle-controlled model.

Overview of Literature: The increased incidence of paravertebral lumbar muscle injuries after open techniques has raised the importance of implementing minimally invasive spine surgical techniques using tubular retractors and minimally invasive screw placement. The functional cross-sectional area (FCSA) represents the lean muscle mass; furthermore, FCSA is a useful marker of the contractile ability of a muscle following a spine surgery. However, the benefits of unilateral fixation and MI-TLIF on paraspinal muscles have not been defined.

Methods: We performed a retrospective imagenological review on eleven patients who underwent unilateral MI-TLIF and unilateral transpedicular screw lumbar placement. FCSAs of the multifidus and erector spinae were measured 1 year after surgery at adjacent levels and were compared to the contralateral intact muscles. Measurement differences between the surgical and nonsurgical sites were compared. The interobserver reliability was calculated using an intraclass correlation coefficient.

Results: The mean FCSA at the surgical site was $20.97 \pm 5.07 \text{ cm}^2$ at the superior level and $8.89 \pm 2.87 \text{ cm}^2$ at the inferior level. The mean FCSA at the contralateral nonsurgical site was $20.15 \pm 5.95 \text{ cm}^2$ at the superior level and $9.20 \pm 2.66 \text{ cm}^2$ at the inferior level was. The superior and inferior FCSA measurements showed no significant difference between the surgical and nonsurgical sites ($p=0.5$, $p=0.922$, respectively).

Conclusions: Using a mini-open tubular approach through the sulcus between the longissimus and iliocostalis, MI-TLIF and unilateral pedicle screw instrumentation produced minimal paraspinal muscle damage at the superior and inferior adjacent levels.

Keywords: Computed tomography; Functional cross-sectional area; Minimally invasive; Lumbar vertebrae; Paraspinal muscles

Received May 24, 2017; Revised Jun 13, 2017; Accepted Jun 28, 2017

Corresponding author: José Antonio Soriano-Sánchez

Neurological Center, The American British Cowdray Medical Center, Avénida Carlos Graef Fernández 154, Colonia Santa Fe, Cuajimalpa, Ciudad de México, México, ZC 05300

Tel: +52-1-(55)-5405-2358, Fax: +52-1-(55)-5405-2358, E-mail: neurojass1@hotmail.com

*Contents of this work will be presented as an oral presentation in the SMISS Global Forum '15, Las Vegas, Nevada, USA.

ASJ

Copyright © 2018 by Korean Society of Spine Surgery

This is an Open Access article distributed under the terms of the Creative Commons Attribution Non-Commercial License (<http://creativecommons.org/licenses/by-nc/4.0/>) which permits unrestricted non-commercial use, distribution, and reproduction in any medium, provided the original work is properly cited.

Asian Spine Journal • pISSN 1976-1902 eISSN 1976-7846 • www.asianspinejournal.org

Introduction

The multifidus and erector spinae (longissimus and iliocostalis) are essential for carrying the physiologic loads imposed on the spine; furthermore, they provide stability and functional movement [1]. The increased incidence of paravertebral lumbar muscle injuries after conventional open techniques have raised the importance of implementing minimally invasive spine surgical techniques using tubular retractors and minimally invasive screw placement [2-5].

The muscle cross-sectional area (CSA) can be used to measure muscle atrophy and fatty infiltration using either computed tomography (CT) or magnetic resonance imaging (MRI) [6-20]. Even without a decrease in the overall CSA within the muscle fascia borders [21], atrophy can occur, indicating the replacement of muscle with fat and fibrous tissue. The functional cross-sectional area (FCSA) represents the lean muscle mass and is a useful marker of the contractile ability of a muscle [17].

This study aimed to assess paraspinal muscle atrophy using FCSA in patients who underwent a minimally invasive transforaminal lumbar interbody fusion (MI-TLIF) and unilateral pedicle screw instrumentation using a novel contralateral intact muscle-controlled model.

Materials and Methods

We performed a retrospective comparative imagenological review on eleven patients who underwent a unilateral MI-TLIF and unilateral transpedicular screw lumbar placement from January 2010 to December 2013 at the ABC Medical Center, Mexico City, Mexico.

1. Surgical technique

For the treatment of degenerative disc disease and spondylolisthesis of the lumbar spine, all patients were voluntarily treated for 1 or 2 levels using MI-TLIF. All procedures were performed under general anesthesia with patients in the supine position on a radiolucent operating table using a two-dimensional C-arm fluoroscope, electromyography, somatosensory evoked potentials, and motor evoked potentials. Following intubation, the patient was placed in the prone position; the lumbar spine was prepared and draped in a sterile fashion. A 2-cm incision was placed 1.5 cm lateral to the ipsilateral pedicle marked

by anterior-posterior fluoroscopy. A monopolar dissection was made through the subcutaneous tissue. The thoracolumbar and muscle erector spinae fasciae were opened; the plane between the iliocostalis and longissimus muscles was recognized. A 16–18-mm tubular retractor (METRx System; Medtronic, Dublin, Ireland) was inserted in between the muscles by dilating over a precisely placed guide tube over the facet joint. The facet complex was drilled out using a straight high-speed match head cutting drill. Discectomy and MI-TLIF were performed using Peek cages (JULIET OL; Spineart, Geneva, Switzerland) filled with a demineralized bone matrix. Following decompression and interbody fusion, using true AP and lateral views, fluoroscopic-guided pedicle screws were placed. The rod was secured through the same incision. The fascia and subcutaneous tissue were closed using Vy-cril 2-0, and the skin was closed using nylon 3-0.

2. Functional cross-sectional area protocol

A lumbar CT (Brilliance 64 scanner; Phillips Healthcare, Andover, MA, USA) was performed 1 year after surgery. Using 5-mm thick slices, images were obtained with patients placed in the supine position. Images were stored in a DICOM (digital imaging and communications in medicine) format and analyzed on a personal computer using OsiriX ver. 5.6 (32 bit; Pixmeo SARL, Bernex, Switzerland) with the following parameters: WLWW, CT abdomen; VR muscle-bone; and opacity, logarithmic inversion. FCSA was measured in selected axial images at the superior and inferior adjacent levels to the lumbar instrumentation. Avoiding nearby fat, bony structures, and other soft tissues, FCSA was drawn with an electronic pencil (Bamboo ver. 5.2.5; Wacom Co. Ltd., Kazo, Saitama, Japan) by two independent observers blinded to the surgical method. The sum of the multifidus and erector spinae FCSAs was calculated as one muscle mass due to difficulties in discriminating between the back musculature. FCSA was bilaterally measured 1 year after surgery (Fig. 1).

3. Statistical analysis

Statistical analyses were performed using IBM SPSS Statistics Software ver. 20.0 (IBM Corp., Armonk, NY, USA). Descriptive statistics were used for clinical and demographic data. FCSA was compared 1 year after surgery for

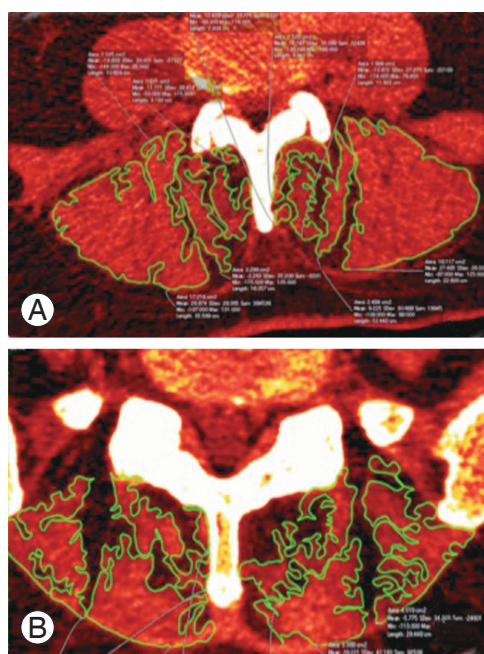


Fig. 1. Measurement of the functional cross-sectional area from the paraspinal muscles at the superior (A) and at the inferior adjacent levels (B) 1 year after surgery. There are no significant differences between the surgical and nonsurgical contralateral side.

the surgical and nonsurgical sites using the Mann–Whitney *U*-test. The interobserver reliability was calculated using an intraclass correlation coefficient (ICC). A *p*-value of <0.05 was considered statistically significant.

Results

Clinical data and FCSA were evaluated in eleven patients 1 year after surgery. The mean age was 62.91 ± 15.86 years (range, 34 to 82 years; eight males and three females). The mean surgical time was 180 minutes (range, 120 to 300 minutes); the mean bleeding volume was 40 mL (range, 20 to 200 mL).

ICC was 0.981 (range, 0.865 to 0.99), indicating excellent interobserver reliability. Therefore, the mean FCSA from the two observer's measurements was used in the statistical analysis.

FCSA was measured at the surgical site and the contralateral side. The mean FCSA was 20.97 ± 5.07 cm² in the surgical site at the superior level and 8.89 ± 2.87 cm² at the inferior level. FCSA was 20.15 ± 5.95 cm² in the contralateral nonsurgical site at the superior level and 9.20 ± 2.66 cm² at the inferior level (Figs. 2, 3). There was no significant change between the surgical and nonsurgical sites in

both superior and inferior FCSA measurements (superior level: $Z = -0.624$, $p = 0.5$; inferior level: $Z = -0.098$, $p = 0.922$). When using the control site as a reference, there was a +4.06% increase in surgical site muscles at the superior level and a -3.3% reduction at the inferior level.

Discussion

It is important to assess muscle atrophy following spine surgery because there are reports on its correlation with chronic low back pain [6,21-23]. Although conventional open TLIF and pedicle screw fixation are beneficial, these techniques require extensive soft tissue and muscle dissection, which is associated with increased blood loss, higher infection rate, and prolonged hospital stay. Using MI-TLIF with a unilateral fixation reduces paraspinal muscles manipulation during surgery, decreasing paraspinal muscles damage, and theoretically, chronic low back pain risk.

Hu et al. [24] demonstrated that the reliability between CT and MRI to assess FCSA measurements is not significantly different and that they are acceptable methods for evaluating paraspinal muscle atrophy. Our study is a unique model that compares the surgical site with the contralateral nonsurgical site in the same patient 1 year after surgery using quantitative CT FCSA. Muscles were assessed proximal and distal to the arthrodesis; the operated level was not measured because it gave several artifacts. In patients with an abundant fatty infiltration, the muscles borders were irregular and difficult to trace; however, measurements were taken by two blinded observers with a high ICC (0.981), demonstrating that the use of previously described OsiriX parameters was adequate to identify muscle boundaries. However, differentiation between all intrinsic paraspinal muscles was difficult, particularly at the distal level (S1). Therefore, to address this problem, we assessed FCSA using the sum of all intrinsic paraspinal muscles. This measurement model wherein the contralateral side is the patient's control, overcomes age and sex differences regarding muscle volume and fat content (Fig. 1).

Using unilateral fixation with a mini-open approach prevents contralateral muscle damage, decreases surgical time and blood loss, and provides fusion. Our mini-open approach required one incision for MI-TLIF and fixation. The plane between the iliocostalis and longissimus muscles was recognized, preventing muscle damage during TLIF. The screws were placed and the rod secured through

Table 1. Muscle damage assessed using clinical imaging related to open and minimally invasive spine approaches

Author	Surgical technique	Measurement equipment and method/muscles evaluated	Approach & percentage paraspinal muscle change after surgery (%)
Suwa et al. [33] (2000)	PLF and laminectomy	CT-paraspinal muscle thickness/multifidus	Open: single laminectomy, -2.5 to -3.4; multiple laminectomy, -6.5; PLF, -7 to -19.4
Kim et al. [14] (2005)	LPSF	MRI-GCSA/multifidus muscle	Open: adjacent level, -30.35; percutaneous: adjacent level, -3.68
Motouneya et al. [16] (2006)	ALIF, PLIF, PLF, laminectomy, and Love's nucleotomy	MRI-GCSA/back musculature	Open, operative level: ALIF, -6; PLIF, -12; PLF, -16; LAM, -6; Love, -4; control, -2
Gille et al. [9] (2007)	Decompression and bilateral LPSF	MRI-FCSA/multifidus and erector spinae	Open: (1) with cholinergic blockade: superior level, -2; inferior level, -24; (2) without cholinergic blockade: superior level, -6; inferior level, -30
Hyun et al. [34] (2007)	TLIF and bilateral LPSF	CT-GCSA and muscle thickness/multifidus	Midline TLIF and LPSF: adjacent level, -20.69; contralateral PIA for LPSF: adjacent level, -4.76
Tsutsumimoto et al. [19] (2009)	PLIF and bilateral LPSF	MRI-GCSA/multifidus	Open: adjacent level, -26 to -38; mini-open: adjacent level, -3 to -15
Min et al. [30] (2009)	TLIF and bilateral LPSF	MRI-fat infiltration and CSA/multifidus and erector spinae	Open: fat infiltration, 6.63; mini-open: fat infiltration, 2.14
Fan et al. [8] (2010)	PLIF and bilateral LPSF	MRI-FCSA/multifidus	Open: operative level, -36.8; adjacent level, -29.3; mini-open: operative level, -12.2; adjacent level, -8.5
Breshahan et al. [28] (2017)	Lumbar decompression	MRI-FCSA/multifidus and erector spinae	Open: adjacent level, -5.4; MEDS: adjacent level, +9.9; no difference between sides
Yoo et al. [32] (2014)	MI-TLIF and bilateral LPSF	CT-FCSA/multifidus	Mini-open TLIF and bilateral percutaneous LPSF: surgical side (TLIF): inferior level, -3; contralateral side: inferior level, -2.42
Ghiassi et al. [29] (2016)	Laminectomy and discectomy	MRI-FCSA/multifidus, erector spinae, quadratus lumborum, and iliopsoas	Open: multifidus: L5-S1, -26.2, L4-L5, -14.2; erector spinae: L4-L5, -11.2
Strube et al. [31] (2016)	TDR and stand-alone ALIF	CT-muscle volume/longissimus and multifidus	TDR: index level, -1.4; adjacent level, -2.41; ALIF: index level, -3.19; adjacent level, -0.61
Present study (2017)	MI-TLIF and unilateral LPSF	CT-FCSA/multifidus and erector spinae	Unilateral mini-open TLIF and unilateral LPSF: surgical side in comparison to the contralateral side: superior level, +4.06; inferior level, -3.3

PLF, posterolateral lumbar fusion; CT, computed tomography; LPSF, lumbar pedicle screw fixation; MRI, magnetic resonance imaging; GCSA, gross cross-sectional area; ALIF, anterior lumbar interbody fusion; PLIF, posterior lumbar interbody fusion; LAM, laminectomy; FCSA, functional cross-sectional area; TLIF, transforaminal lumbar interbody fusion; PIA, paramedian interfascial approach; CSA, cross-sectional area; MEDS, micro endoscopic decompression of stenosis; MI, minimally invasive; TDR, total disc replacement.

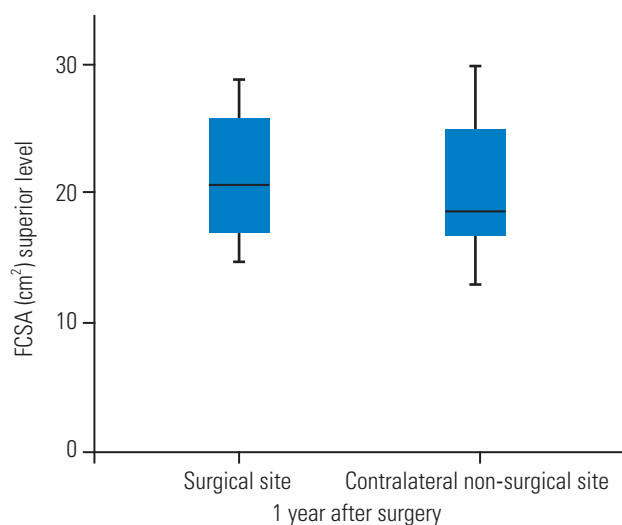


Fig. 2. Boxplot showing FCSA after minimally invasive transforaminal lumbar interbody fusion and unilateral screw pedicle fixation at the superior adjacent level. There was a mean percentage increase of 4.06% at the surgical site ($p=0.5$). FCSA, functional cross-sectional area.

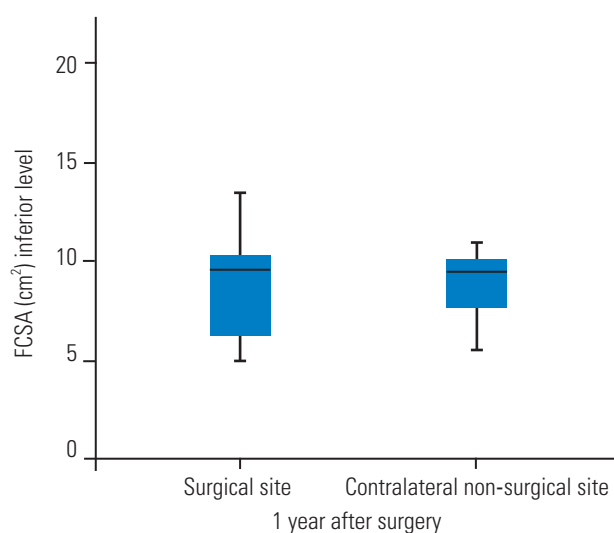


Fig. 3. Boxplot showing FCSA after minimally invasive transforaminal lumbar interbody fusion and unilateral screw pedicle fixation at the inferior adjacent level. There was a mean percentage reduction of 3.3% 1 year after surgery at the surgical site ($p=0.922$). FCSA, functional cross-sectional area.

the same plane and incision. Even though contralateral fixation can be done using a mini-open or percutaneous technique, there is still an 84% and 20% risk, respectively, for a posterior rami medial branch nerve transection after pedicle screw insertion, putting the contralateral multifidus innervation at risk [25]. Cadaveric specimens showed an increased anatomic risk for medial branch nerve injury using a mini-open approach at the adjacent cranial level [25]; therefore, a unilateral fixation eliminates the risk for contralateral medial branch nerve injury, preserving the integrity and innervation of the contralateral multifidus. There were no significant differences in the fusion rate or complications between the unilateral or bilateral pedicle screw fixation [26,27]; however, it is important to consider bilateral fixation in cases with preoperative instability, osteoporosis, high grade, and isthmic spondylolisthesis.

Previous studies have demonstrated a decrease in the adjacent FCSA ranging from -2% to -38% using an open approach compared with $+9.9\%$ to -12.2% using minimally invasive techniques [8,9,14,16,19,28-34] (Table 1). In our study, the functional integrity assessed by FCSA showed no significant difference proximal and distal to the arthrodesis 1 year after surgery ($p=0.5$, $p=0.922$, respectively) (Figs. 2, 3).

A minimally invasive surgery aims for a simple minimal access through small incisions and to minimize substantial trauma to ligaments, muscles, and vertebrae while

attaining a clinically positive effect. Using minimally invasive spine surgery (MISS) TLIF and unilateral fixation prevents contralateral damage, minimizes ipsilateral muscle atrophy, and provides good therapeutic results. The main limitations of this study are as follows: First, it was a retrospective study; direct visualization of the paraspinal muscles was not assessed at the level of fusion. Second, the results were not compared with an open technique. However, the study aimed to demonstrate minimal paraspinal muscle contractile damage using MISS TLIF and unilateral instrumentation.

Conclusions

MI-TLIF and unilateral pedicle screw instrumentation using a mini-open approach caused minimal paraspinal muscle damage at the superior and inferior adjacent levels. Cross-sectional CT imaging may contribute to the functional muscle measurement after spine surgery. Further studies are required to confirm whether muscle injury is directly related to long-term clinical outcome.

Conflict of Interest

No potential conflict of interest relevant to this article was reported.

References

1. Panjabi MM, Abumi K, Duranceau J, Crisco JJ. Bio-mechanical evaluation of spinal fixation devices: II. Stability provided by eight internal fixation devices. *Spine (Phila Pa 1976)* 1988;13:1135-40.
2. Gejo R, Matsui H, Kawaguchi Y, Ishihara H, Tsuji H. Serial changes in trunk muscle performance after posterior lumbar surgery. *Spine (Phila Pa 1976)* 1999;24:1023-8.
3. Kawaguchi Y, Matsui H, Tsuji H. Back muscle injury after posterior lumbar spine surgery: part 2: histologic and histochemical analyses in humans. *Spine (Phila Pa 1976)* 1994;19:2598-602.
4. Kawaguchi Y, Matsui H, Tsuji H. Back muscle injury after posterior lumbar spine surgery: a histologic and enzymatic analysis. *Spine (Phila Pa 1976)* 1996;21:941-4.
5. Mayer TG, Vanharanta H, Gatchel RJ, et al. Comparison of CT scan muscle measurements and isokinetic trunk strength in postoperative patients. *Spine (Phila Pa 1976)* 1989;14:33-6.
6. Barker KL, Shamley DR, Jackson D. Changes in the cross-sectional area of multifidus and psoas in patients with unilateral back pain: the relationship to pain and disability. *Spine (Phila Pa 1976)* 2004;29:E515-9.
7. Danneels LA, Vanderstraeten GG, Cambier DC, Witvrouw EE, De Cuyper HJ. CT imaging of trunk muscles in chronic low back pain patients and healthy control subjects. *Eur Spine J* 2000;9:266-72.
8. Fan S, Hu Z, Zhao F, Zhao X, Huang Y, Fang X. Multifidus muscle changes and clinical effects of one-level posterior lumbar interbody fusion: minimally invasive procedure versus conventional open approach. *Eur Spine J* 2010;19:316-24.
9. Gille O, Jolivet E, Dousset V, et al. Erector spinae muscle changes on magnetic resonance imaging following lumbar surgery through a posterior approach. *Spine (Phila Pa 1976)* 2007;32:1236-41.
10. Hides JA, Belavy DL, Stanton W, et al. Magnetic resonance imaging assessment of trunk muscles during prolonged bed rest. *Spine (Phila Pa 1976)* 2007;32:1687-92.
11. Hyun JK, Lee JY, Lee SJ, Jeon JY. Asymmetric atrophy of multifidus muscle in patients with unilateral lumbosacral radiculopathy. *Spine (Phila Pa 1976)* 2007;32:E598-602.
12. Kaser L, Mannion AF, Rhyner A, Weber E, Dvorak J, Muntener M. Active therapy for chronic low back pain: part 2. effects on paraspinal muscle cross-sectional area, fiber type size, and distribution. *Spine (Phila Pa 1976)* 2001;26:909-19.
13. Keller A, Gunderson R, Reikeras O, Brox JI. Reliability of computed tomography measurements of paraspinal muscle cross-sectional area and density in patients with chronic low back pain. *Spine (Phila Pa 1976)* 2003;28:1455-60.
14. Kim DY, Lee SH, Chung SK, Lee HY. Comparison of multifidus muscle atrophy and trunk extension muscle strength: percutaneous versus open pedicle screw fixation. *Spine (Phila Pa 1976)* 2005;30:123-9.
15. Lee JC, Cha JG, Kim Y, Kim YI, Shin BJ. Quantitative analysis of back muscle degeneration in the patients with the degenerative lumbar flat back using a digital image analysis: comparison with the normal controls. *Spine (Phila Pa 1976)* 2008;33:318-25.
16. Motosuneya T, Asazuma T, Tsuji T, Watanabe H, Nakayama Y, Nemoto K. Postoperative change of the cross-sectional area of back musculature after 5 surgical procedures as assessed by magnetic resonance imaging. *J Spinal Disord Tech* 2006;19:318-22.
17. Ranson CA, Burnett AF, Kerslake R, Batt ME, O'Sullivan PB. An investigation into the use of MR imaging to determine the functional cross sectional area of lumbar paraspinal muscles. *Eur Spine J* 2006;15:764-73.
18. Storheim K, Holm I, Gunderson R, Brox JI, Bo K. The effect of comprehensive group training on cross-sectional area, density, and strength of paraspinal muscles in patients sick-listed for subacute low back pain. *J Spinal Disord Tech* 2003;16:271-9.
19. Tsutsumimoto T, Shimogata M, Ohta H, Misawa H. Mini-open versus conventional open posterior lumbar interbody fusion for the treatment of lumbar degenerative spondylolisthesis: comparison of paraspinal muscle damage and slip reduction. *Spine (Phila Pa 1976)* 2009;34:1923-8.
20. Mengiardi B, Schmid MR, Boos N, et al. Fat content of lumbar paraspinal muscles in patients with chronic low back pain and in asymptomatic volunteers: quantification with MR spectroscopy. *Radiology* 2006;240:786-92.
21. Parkkola R, Rytokoski U, Kormanen M. Magnetic

- resonance imaging of the discs and trunk muscles in patients with chronic low back pain and healthy control subjects. *Spine (Phila Pa 1976)* 1993;18:830-6.
22. Hultman G, Nordin M, Saraste H, Ohlson H. Body composition, endurance, strength, cross-sectional area, and density of MM erector spinae in men with and without low back pain. *J Spinal Disord* 1993;6:114-23.
 23. Salminen JJ, Erkkintalo-Tertti MO, Paajanen HE. Magnetic resonance imaging findings of lumbar spine in the young: correlation with leisure time physical activity, spinal mobility, and trunk muscle strength in 15-year-old pupils with or without low-back pain. *J Spinal Disord* 1993;6:386-91.
 24. Hu ZJ, He J, Zhao FD, Fang XQ, Zhou LN, Fan SW. An assessment of the intra- and inter-reliability of the lumbar paraspinal muscle parameters using CT scan and magnetic resonance imaging. *Spine (Phila Pa 1976)* 2011;36:E868-74.
 25. Regev GJ, Lee YP, Taylor WR, Garfin SR, Kim CW. Nerve injury to the posterior rami medial branch during the insertion of pedicle screws: comparison of mini-open versus percutaneous pedicle screw insertion techniques. *Spine (Phila Pa 1976)* 2009;34:1239-42.
 26. Liu H, Xu Y, Yang SD, et al. Unilateral versus bilateral pedicle screw fixation with posterior lumbar interbody fusion for lumbar degenerative diseases: a meta-analysis. *Medicine (Baltimore)* 2017;96:e6882.
 27. Wang L, Wang Y, Li Z, Yu B, Li Y. Unilateral versus bilateral pedicle screw fixation of minimally invasive transforaminal lumbar interbody fusion (MIS-TLIF): a meta-analysis of randomized controlled trials. *BMC Surg* 2014;14:87.
 28. Bresnahan LE, Smith JS, Ogden AT, et al. Assessment of paraspinal muscle cross-sectional area after lumbar decompression: minimally invasive versus open approaches. *Clin Spine Surg* 2017;30:E162-8.
 29. Ghiasi MS, Arjmand N, Shirazi-Adl A, et al. Cross-sectional area of human trunk paraspinal muscles before and after posterior lumbar surgery using magnetic resonance imaging. *Eur Spine J* 2016;25:774-82.
 30. Min SH, Kim MH, Seo JB, Lee JY, Lee DH. The quantitative analysis of back muscle degeneration after posterior lumbar fusion: comparison of minimally invasive and conventional open surgery. *Asian Spine J* 2009;3:89-95.
 31. Strube P, Putzier M, Streitparth F, Hoff EK, Hartwig T. Postoperative posterior lumbar muscle changes and their relationship to segmental motion preservation or restriction: a randomized prospective study. *J Neurosurg Spine* 2016;24:25-31.
 32. Yoo JS, Min SH, Yoon SH, Hwang CH. Paraspinal muscle changes of unilateral multilevel minimally invasive transforaminal interbody fusion. *J Orthop Surg Res* 2014;9:130.
 33. Suwa H, Hanakita J, Ohshita N, Gotoh K, Matsuoka N, Morizane A. Postoperative changes in paraspinal muscle thickness after various lumbar back surgery procedures. *Neurol Med Chir (Tokyo)* 2000;40:151-4.
 34. Hyun SJ, Kim YB, Kim YS, et al. Postoperative changes in paraspinal muscle volume: comparison between paramedian interfascial and midline approaches for lumbar fusion. *J Korean Med Sci* 2007;22:646-51.