



Meta-analysis of microarray datasets identify several chromosome segregation-related cancer/testis genes potentially contributing to anaplastic thyroid carcinoma

Mu Liu^{1,2,*}, Yu-lu Qiu^{1,*}, Tong Jin³, Yin Zhou^{1,2}, Zhi-yuan Mao⁴ and Yong-jie Zhang^{4,5}

¹The First Medical School of Nanjing Medical University, Nanjing Medical University, Nanjing, Jiangsu, China

²School of Basic Medical Sciences, Nanjing Medical University, Nanjing, Jiangsu, China

³Department of Bioinformatics, School of Biomedical Engineering and Informatics, Nanjing Medical University, Nanjing, Jiangsu, China

⁴Department of Human Anatomy, School of Basic Medical Sciences, Nanjing Medical University, Nanjing, Jiangsu, China

⁵Key Laboratory for Aging & Diseases of Nanjing Medical University, Nanjing Medical University, Nanjing, Jiangsu, China

*These authors contributed equally to this work.

ABSTRACT

Aim. Anaplastic thyroid carcinoma (ATC) is the most lethal thyroid malignancy. Identification of novel drug targets is urgently needed.

Materials & Methods. We re-analyzed several GEO datasets by systematic retrieval and data merging. Differentially expressed genes (DEGs) were filtered out. We also performed pathway enrichment analysis to interpret the data. We predicted key genes based on protein–protein interaction networks, weighted gene co-expression network analysis and genes' cancer/testis expression pattern. We also further characterized these genes using data from the Cancer Genome Atlas (TCGA) project and gene ontology annotation.

Results. Cell cycle-related pathways were significantly enriched in upregulated genes in ATC. We identified *TRIP13*, *DLGAP5*, *HJURP*, *CDKN3*, *NEK2*, *KIF15*, *TTK*, *KIF2C*, *AURKA* and *TPX2* as cell cycle-related key genes with cancer/testis expression pattern. We further uncovered that most of these putative key genes were critical components during chromosome segregation.

Conclusion. We predicted several key genes harboring potential therapeutic value in ATC. Cell cycle-related processes, especially chromosome segregation, may be the key to tumorigenesis and treatment of ATC.

Subjects Genetics, Diabetes and Endocrinology, Oncology

Keywords Anaplastic thyroid carcinoma, Key genes identification, Bioinformatics, Cancer/testis gene, Meta-analysis of microarray datasets, Chromosome segregation

Submitted 11 May 2018

Accepted 25 September 2018

Published 24 October 2018

Corresponding author

Yong-jie Zhang,
zhangyongjie@njmu.edu.cn

Academic editor

Ranji Cui

Additional Information and
Declarations can be found on
page 14

DOI 10.7717/peerj.5822

© Copyright
2018 Liu et al.

Distributed under
Creative Commons CC-BY 4.0

OPEN ACCESS

INTRODUCTION

Thyroid carcinoma is the most common malignancy of the endocrine system, accounting for approximately 2% of all cancer diagnoses worldwide (*Kitahara & Sosa, 2016*) and affecting more than 3.2 million people (*Disease, Injury & Prevalence, 2016*). Thyroid carcinoma has many histological subtypes. Differentiated thyroid cancers, such as papillary thyroid carcinoma (PTC) and follicular thyroid carcinoma (FTC), are the most common variants. PTC and FTC account for approximately 90% of all thyroid malignancies (*Kitahara & Sosa, 2016*). Differentiated thyroid cancers have a relatively good prognosis. Five-year relative survival rates were over 90% for patients with differentiated thyroid cancers (*Paunovic et al., 2015*).

However, anaplastic thyroid carcinoma (ATC) remains the most lethal histotype. ATC patients have a median survival of approximately 5 months (*Smallridge & Copland, 2010*). One-year and five-year relative survival rates were only around 20% and 8%, respectively, for ATC patients (*Haddad et al., 2015; Paunovic et al., 2015; Smallridge & Copland, 2010*).

Currently, ATC is a uniformly fatal disease with no known curative therapy. Conventional strategies such as radioiodine therapy, radiotherapy, chemotherapy or surgery, are of limited help (*Kojic, Strugnell & Wiseman, 2011*). Targeted therapy had exhibited gratifying results in several differentiated thyroid cancers (*Bible & Ryder, 2016*). However, there is currently no FDA-approved targeted therapy for ATC (*Iyer et al., 2018*). Experimental targeted therapies are either unsatisfactory or still at early stages (*Bible et al., 2012; Savvides et al., 2013; Subbiah et al., 2018; Tahara et al., 2017*). Hence, identification of novel drug targets for the treatment of ATC is urgently needed, and it is necessary to promote a deeper understanding of the molecular basis of ATC etiology.

Omics data from transcriptomic studies may contribute to a better understanding of ATC. There has been public transcriptional data of well-differentiated thyroid cancer. Unfortunately, human ATC tissues are rarely seen and therefore difficult to collect. Hence, available ATC data were distributed in separate datasets, while large-scale ATC expression datasets are not available.

To make full use of both the published resources and advanced data mining tools, we performed a meta-analysis of microarray datasets. We found several published ATC datasets through our data retrieval and selection processes (*Aldred et al., 2004; Giordano et al., 2005; Landa et al., 2016; Tomas et al., 2012; Von Roemeling et al., 2015*). Aiming to provide robust novel putative target genes, we combined two analytic pipelines and took a unique 'two round' data selection procedure providing suitable data for both pipelines.

Aiming to discover novel key genes with the potential for being therapeutic targets, the concept of 'cancer/testis' genes aroused our attention. Expression of some genes was restricted to germ cells under physiological conditions. However, these genes can be reactivated and highly expressed in malignant tumors. They are named cancer/testis antigens, meaning that they are immunogenic and have the potential to be used as tumor vaccines (*Simpson et al., 2005*). Besides being potential therapeutic targets, their aberrant expression in cancer makes them potential oncogenes, as gametogenesis and tumorigenesis share many similarities. Recently, *Wang et al. (2016)* systematically identified several genes

with testis-specific expression pattern. We utilized their results to filter out key genes with cancer/testis expression pattern as potential therapeutic targets of ATC.

MATERIAL AND METHODS

Retrieval of microarray data

We systematically retrieved the Gene Expression Omnibus (GEO) database using key words ‘anaplastic’ and ‘thyroid’. Basic inclusion criteria were (1) gene expression data of human-derived primary tissue samples; (2) profiled by microarrays using the *Affymetrix* platform; (3) feature-level extraction output (FLEO) data (*Ramasamy et al., 2008*) and (4) the ability to be processed by the integration toolkit *NetworkAnalyst*.

As we applied two different pipelines to analyze the data, we performed two rounds of screening. To generate a large data matrix required by weighted gene co-expression network analysis (WGCNA), we finally included five datasets (*Dom et al., 2012; Giordano et al., 2005; Landa et al., 2016; Tomas et al., 2012; Von Roemeling et al., 2015*) containing 307 normal/benign/malignant thyroid samples. Their platforms were all *Affymetrix* human genome array (U133 Plus 2.0 or U133A). To filter out differently expressed genes (DEGs) between ATC and comparable normal thyroid tissues, we conducted a stricter secondary screening. We further excluded dataset which does not contain appropriate normal tissues. Moreover, samples from the Chernobyl Tissue Bank were removed to exclude the potential bias due to radiation exposure. Flow diagram on the data screening and selection procedures were illustrated in [Figs. 1A & 2A](#). Detailed sample information was listed in [Table S1](#).

Data integration and DEG filtering

We downloaded the raw data and preprocess these datasets respectively using *R* packages *affy*, *RMA* and *KNN* algorithm. All codes run under the *R* environment 3.4.1 (*R Core Team, 2017*). Preprocessed data were uploaded to web-based analytic tool *NetworkAnalyst* (*Xia, Gill & Hancock, 2015*). Batch effects were adjusted by *Combat* (*Chen et al., 2011*). All other parameters were default.

After the secondary data screening, 25 ATC samples and 27 normal samples from three datasets, namely [GSE27155](#), [GSE29265](#) and [GSE65144](#), were included for DEG screening. DEGs were filtered out using combining effect size method. Genes with the absolute combined effect size >2 and adjusted *P* value <0.01 were identified as DEGs.

Identification of hub genes based on PPI network

We generated the protein–protein interaction (PPI) network using STRING database. All upregulated DEGs were loaded for the PPI network construction. All other parameters were default. *.tsv format network files were loaded into the plug-in *Cytohubba* (*Chin et al., 2014*) based on the *Cytoscape* software version 3.5.1 (Institute for Systems Biology, Seattle, WA, USA). We defined the top 50 genes with the highest prediction scores calculated by Maximal Clique Centrality (MCC) algorithm as hub DEGs.

Gene enrichment analyses to characterize relevant pathways

We performed gene enrichment analysis to characterize relevant Kyoto Encyclopedia of Genes and Genomes (KEGG) pathways. Basic KEGG pathway enrichment analyses were

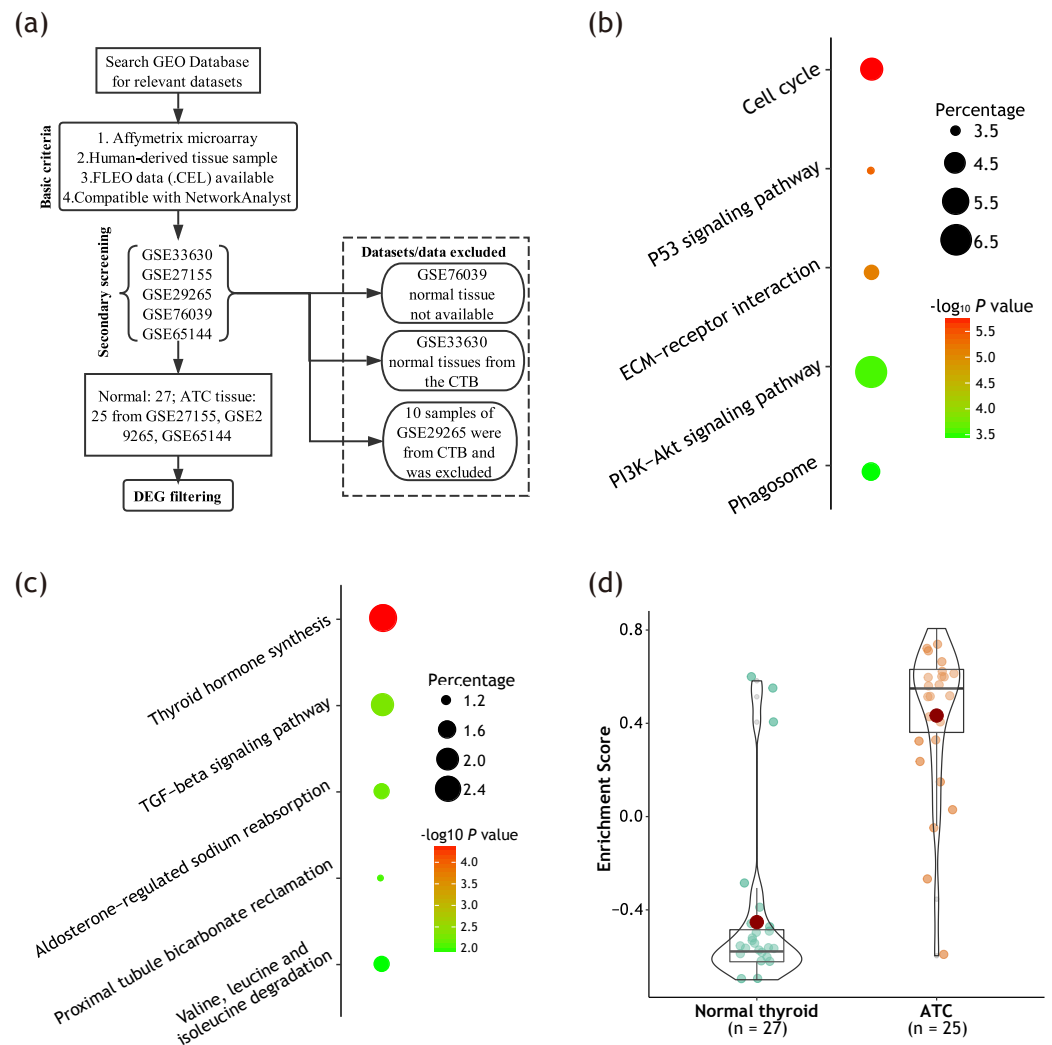


Figure 1 Unregulated DEGs were significantly enriched in cell cycle-related pathways. (A) Data retrieval process for DEG screening. (B) Bubble plot showing top five enriched KEGG pathways among up-regulated DEGs; (C) Bubble plot showing top five enriched KEGG pathways among downregulated DEGs. The size of the bubble represents the percentage of genes enriched in corresponding pathway. The color of the bubble represents P value evaluating reliability of the enrichment into corresponding pathway. (D) Box-violin plot showing enrichment scores (ES) of pathway 'Cell cycle' of each sample calculated by GSVA algorithm. All DEGs were loaded for the analysis. Each dot represents one sample. Red dot represents mean value. Median lines of each box represents median value. Outline of the violin plot illustrates the distribution of samples.

Full-size DOI: [10.7717/peerj.5822/fig-1](https://doi.org/10.7717/peerj.5822/fig-1)

performed using the overrepresentation enrichment analysis (ORA) algorithm via DAVID tools version 6.8 (<https://david.ncifcrf.gov/>) based on up-/down-regulated DEGs or genes from gene modules.

Gene Set Variation Analysis (GSVA) method based on functional class scoring (FCS) algorithm was applied to validate and visualize the differences of enrichment intensities of gene sets (Hanzelmann, Castelo & Guinney, 2013). GSVA was performed using the GSVA

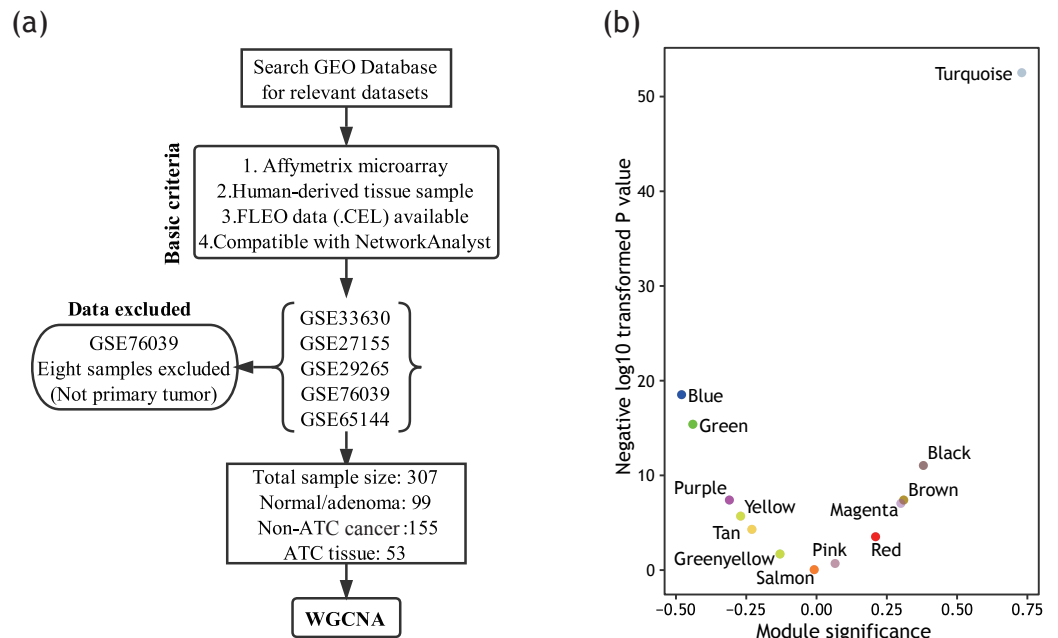


Figure 2 Module detection based on WGCNA. (A) Data retrieval process for WGCNA. (B) Volcano plot showing correlation coefficient with ATC of each module. The vertical axis represents module significance (correlation coefficient). The horizontal axis represents P value of correlation.

Full-size [DOI: 10.7717/peerj.5822/fig-2](https://doi.org/10.7717/peerj.5822/fig-2)

package installed from Bioconductor and the KEGG gene set library from the Molecular Signatures Database (MSigDB) version 6.1. Gene set with adjusted P value < 0.05 was considered significantly/differentially enriched.

WGCNA

To discover ATC-related gene modules, expression matrix of 5,000 genes with the highest variance across 307 samples was loaded for WGCNA (Langfelder & Horvath, 2008). Unsigned networks were generated. To create a network with nearly scale-free topology, we set the soft threshold power $\beta = 5$ ($R^2 = 0.88$). Adjacency matrices were calculated and transformed into the topological overlap matrix (TOM). The dynamic tree cut algorithm was applied to detect gene modules. Gene significance (GS) was defined as correlation coefficient between gene expression and module trait. Module eigengene was calculated as a summary profile for each module. Module significance was defined as the correlation coefficient between module's eigengene and trait. Module membership (MM) was defined by the correlation coefficient of the module eigengene and gene's expression profile. Genes with MM values above 0.85 were regarded as the modules' representative genes harboring potential key functions.

Definition of cancer/testis genes

We acquired the cancer/testis genes' list from the publication of Wang et al. (2016). Protein-coding genes with higher confidence of testis-specific expression (group 'C1' defined by Wang et al.) were regarded as testis-specific genes. Cancer/testis gene's expression is

activated in tumor tissue. Hence, we regarded genes meeting the following criteria as cancer/testis genes of ATC: (1) Testis-specific genes; (2) defined as ‘expressed’ by [Wang et al. \(2016\)](#) (>5 normalized read counts in at least 1% of samples) in THCA cohort (which contains mainly well-differentiated thyroid cancer such as PTC) and (3) identified as upregulated genes in ATC (Fold change > 2, adjusted P value < 0.01) compared with PTC based on dataset [GSE33630](#) (11 ATCs versus 49 PTCs) using GEO2R analytic tool.

Further characterization of key genes using other open data

We used the GEPIA web-based toolkit ([Tang et al., 2017](#)) to perform the survival analysis using data of the thyroid cancer cohort (THCA cohort) from The Cancer Genome Atlas (TCGA). We analyzed gene’s impact on patients’ Disease Free Survival (DFS). Hazards ratios were calculated based on Cox proportional risk model. Genes with $P < 0.05$ under median cutoff were regarded as survival-related. We also performed survival analysis based on metadata provided by cBioPortal (<http://www.cbioportal.org/>). Genes with normalized expression Z -scores >2 were defined as upregulated. Logrank test was applied using GraphPad Prism 6 (GraphPad software, Inc). Normal expression levels of identified key genes were illustrated based on data from the BioProject PRJEB4337 ([Fagerberg et al., 2014](#)). We also validate each key gene’s gene ontology (GO) ‘biological processes (BP)’ annotation using ARCHS⁴ database ([Lachmann et al., 2018](#)) which applied massive mining of publicly available RNA sequencing data (<https://amp.pharm.mssm.edu/archs4/index.html>).

RESULTS

Upregulated DEGs were significantly enriched in cell cycle-related pathways

Many pipelines and strategies exist to aid in the interpretation of omics data. Firstly, we selected suitable datasets and performed canonical DEG screening to characterize ATC. Detailed sample information was listed in [Table S1](#).

The data retrieval process for DEG screening was recorded in [Fig. 1A](#). Using combined effect size method, we filtered out 661 DEGs, including 318 upregulated and 343 downregulated genes. Detailed information on DEGs was provided in [Table S2](#).

After DEG filtering, we performed gene enrichment analysis to characterize the relevant KEGG pathways of these DEGs. As illustrated in [Figs. 1B & 1C](#), upregulated DEGs were significantly enriched in cell cycle-related pathways. Meanwhile, downregulated DEGs were primarily enriched in thyroid hormone synthesis pathway.

The above results indicated that thyroid hormone synthesis pathway was significantly enriched in downregulated DEGs. We were not surprise to see that, as degenerative phenotypes are classic manifestations of ATC ([Molinaro et al., 2017](#)).

As indicated by previous literature ([Evans et al., 2012](#); [Pita et al., 2014](#)), dysregulation of cell cycle-related pathways are important feature and potential driver of ATC. Hence, in the present work, we primarily focused on cell cycle-related key genes. We further validated the enrichment of KEGG pathway ‘Cell cycle’ using flexible GSEA method. As illustrated in [Fig. 1D](#), pathway ‘Cell cycle’ was differentially enriched between ATC and normal thyroid tissue, with adjusted P value < 0.0001.

Detecting gene modules using WGCNA

Next, we decided to apply an unsupervised clustering algorithm WGCNA to explore the co-expression network and find if there was any gene cluster highly related to ATC. Using WGCNA (Langfelder & Horvath, 2008), we can identify the correlations among genes and cluster genes into 'gene modules'. By quantifying the associations between these gene modules and ATC, we can filter out potential key gene modules for further analysis.

As an advanced data mining algorithm, WGCNA has high demands on sample size. To make the full use of data and produce more robust results, we re-screened and re-selected the data (Fig. 2A). Detailed sample information was listed in Table S1.

The top 5,000 genes with the highest variance were loaded for module detection. As shown in Fig. 2B, several gene modules were identified by WGCNA. Then, we calculated out the correlations between these modules and ATC using each module's eigengene. A total of five gene modules were identified as positively correlated with ATC ($P < 0.05$). Among them, module turquoise had the highest correlation coefficient.

Identifying module turquoise as a potential key cycle-related module

After module detection, we can further uncover key gene modules by gene enrichment analysis focused on genes' involvement in pathways. As the above analysis revealed that upregulated genes were enriched in cell cycle-related pathways, next we want to explore if any cell cycle-enriched gene module can be detected.

As illustrated in Fig. 3A, KEGG enrichment analysis revealed that cell cycle-related pathways were significantly enriched in genes of module turquoise. GSEA method confirmed the enrichment (Fig. 3B) with adjusted P value < 0.0001 . No other gene module with relevant to ATC ($P < 0.05$, both positively and negatively correlated) showed the enrichment of cell cycle-related pathways (Table S3). Next, we will choose module turquoise as a cell cycle-related key gene module and perform further exploration.

Combining two pipelines to filter out potential cell cycle-related key genes

Genes interact with each other, forming a comprehensive network. For key genes occupying central positions in the regulatory network, even small changes may bring great impact. Hence, we tended to explore gene-gene interaction between these DEGs and tried to uncover key DEGs with potential key function. Based on protein-protein interaction (PPI) network, we identified the top 50 hub DEGs with the highest prediction scores. Interestingly, all the top 50 hub genes were clustered in module turquoise (Fig. 4).

The WGCNA algorithm can calculate the eigengene to feature each module. Module membership (MM) was defined as the absolute correlation coefficient between each gene's expression and the corresponding module eigengene. Genes with high MM value indicate high centrality in the subnetwork. We defined that genes with $MM > 0.85$ shall be regarded as module's hub genes. According to the above cut-off criteria, we identified 31 genes predicted as key genes by both PPI network-guided and WGCNA-guided prediction pipelines (Fig. 4). As both the upregulated DEGs and genes of module turquoise were significantly enriched in cell cycle-related pathways, these key genes can be regarded as potential cell cycle-related key genes.

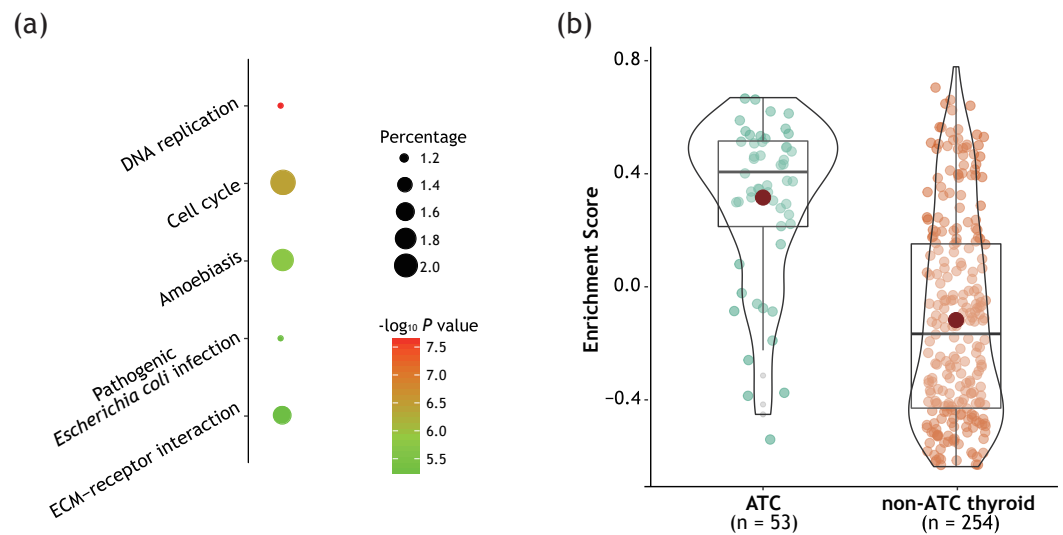


Figure 3 Module turquoise was significantly enriched in cell cycle-related pathways. (A) Bubble plot showing top 5 enriched KEGG pathways among genes of module turquoise. (B) Box-violin plot showing enrichment scores (ES) for pathway ‘Cell cycle’ of each sample calculated by GSEA algorithm. All genes of module turquoise were loaded for the analysis. Detailed figure captions were stated in Fig. 1D.

Full-size [DOI: 10.7717/peerj.5822/fig-3](https://doi.org/10.7717/peerj.5822/fig-3)

Further filtering of cell cycle-related key genes with cancer/testis expression pattern

Expression of some genes are restricted to germ cells under normal conditions, but may be reactivated and upregulated in tumor. These ‘cancer/testis’ genes harbor potential of being therapeutic targets as they are both immunogenic and critical in tumorigenesis. Wang et al. recently systematically identified several testis-specific genes (Wang et al., 2016). Based on their publication, we filtered out 10 genes out of 31 predicted key genes as having cancer/testis expression pattern (Fig. 5A). Their expression levels across major organs under physiological conditions were illustrated in Fig. 5B. These genes were further regarded as putative key genes of ATC harboring therapeutic potential.

We further validate their gene ontology (GO) ‘biological processes (BP)’ classification using ARCHS⁴ database. Top 10 GO terms of each putative key gene with highest Z scores were recorded in the Table S4. These annotated GO terms again demonstrated that these putative key genes play key roles in cell cycle-related pathways. Notably, GO annotation revealed that these putative key genes were primarily associated with chromosome segregation, which will be discussed later.

Key genes’ impact on disease-free survival among patients with differentiated thyroid cancer

Next, we decided to further investigate the association between those key genes’ expression and clinical outcomes of thyroid cancer patients. Data from the THCA cohort, TCGA project was utilized. THCA cohort mainly includes differentiated thyroid cancers. Nevertheless, the tumorigenesis and progression of ATC have been widely acknowledged to be a multistep deterioration process that evolved from that of differentiated thyroid cancers

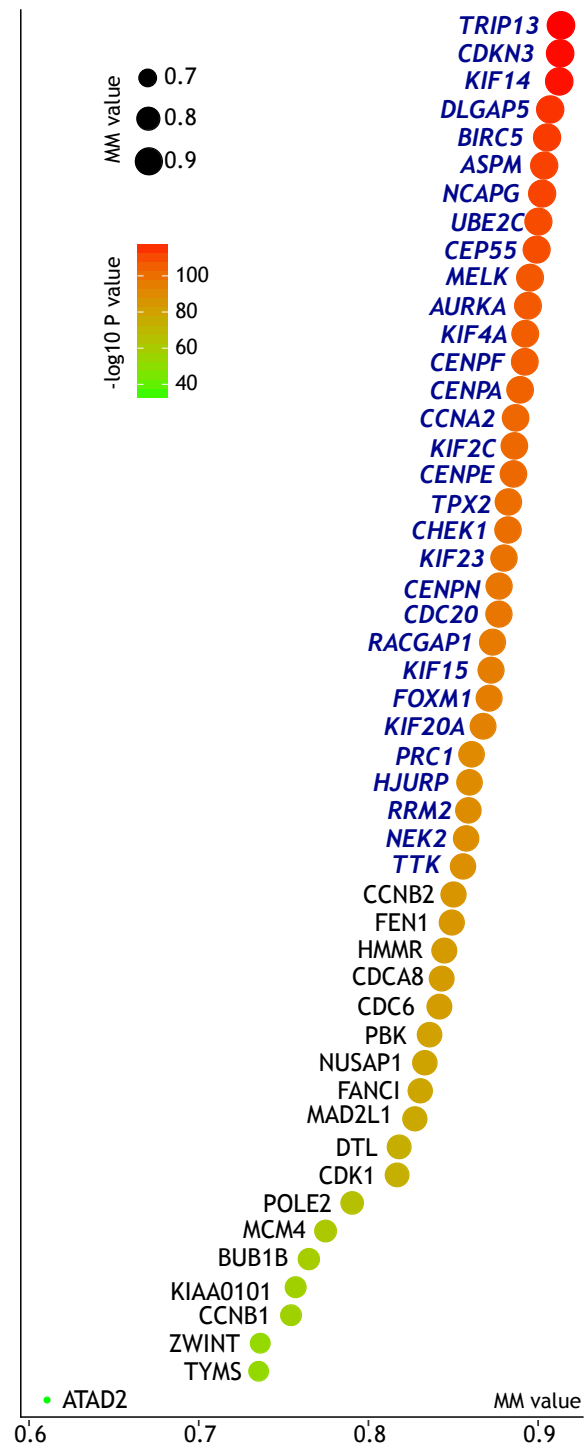


Figure 4 Centrality of the top 50 PPI network-predicted hub DEGs in module turquoise. The horizontal axis together with the size of the bubble represent module membership (MM, reflecting each gene's centrality in the gene module). The color of bubble represents corresponding P value. Based on the cut-off MM value of 0.85, we further filtered out 31 key as key genes supported by both PPI-based and WGCNA-based prediction, marked in blue italics.

Full-size DOI: 10.7717/peerj.5822/fig-4

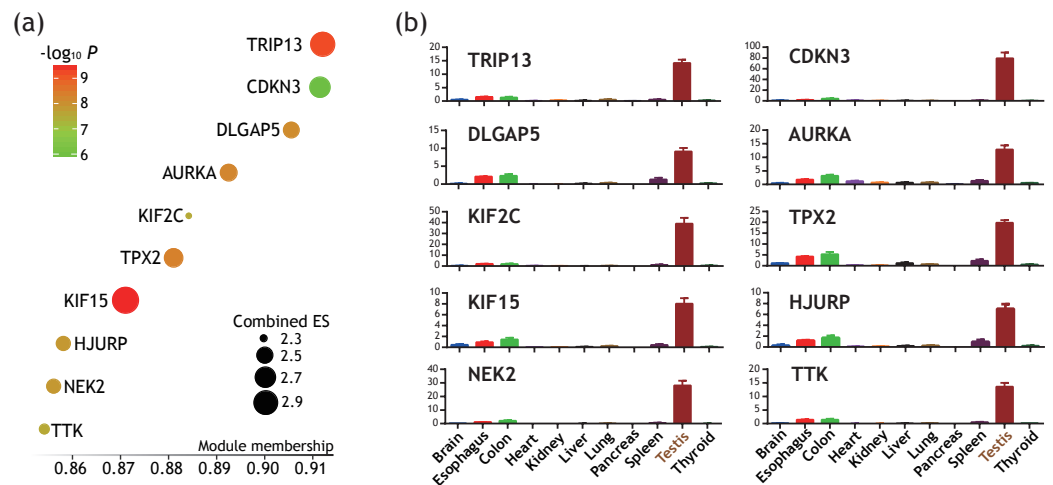


Figure 5 Identification of 10 genes with cancer/testis expression pattern as putative key genes of ATC harboring therapeutic potential. (A) Bubble plot illustrating module membership (MM) of each genes. The horizontal axis represent MM values. Size and color of bubble represent Combined Effect Size (ES) and corresponding P value. (B) Bar plots illustrating testis-specific expression pattern of these key genes. Vertical axis represents expression level of each genes (in RPKM). Data were in the form of mean \pm SEM.

Full-size [DOI: 10.7717/peerj.5822/fig-5](https://doi.org/10.7717/peerj.5822/fig-5)

(Molinaro *et al.*, 2017). Hence, THCA cohort can still provide valuable information on the functional characterization of key genes in ATC from a pan-thyroid cancer perspective.

As illustrated in Figs. 6A–6E, expression levels of *TRIP13*, *TPX2*, *DLGAP5*, *KIF2C* and *TTK* were associated with shorter disease free survival (DFS) among differentiated thyroid cancer. As illustrated in Fig. 6F, patients with more key genes upregulated tended to have shorter DFS (logrank $P = 0.0128$) than patients with less key genes upregulated.

DISCUSSION

ATC is one of the most lethal solid tumors in humans. ATC patients usually have pessimistic prognosis, with a median survival of only 5 months (Smallridge & Copland, 2010). ATC accounts for only approximately 2% of all thyroid cancers. Nevertheless, it is responsible for about one-third of thyroid cancer-related deaths (Molinaro *et al.*, 2017; Smallridge & Copland, 2010), making it a major clinical challenge.

Thus far, there is no well-acknowledged treatment protocol efficacious in prolonging ATC patients' survival (Tiedje *et al.*, 2018). Radioiodine treatment is usually effective in treating differentiated thyroid carcinomas. However, ATC is well known for the loss of the biological features of normal thyroid follicular cells. Loss of physiological functions such as iodine uptake makes virtually all ATC cases refractory to radioactive iodine treatment, thus contributing to a worse prognosis (Molinaro *et al.*, 2017). Targeted therapy has achieved gratifying results in several differentiated thyroid cancers (Bible & Ryder, 2016). However, there is still no efficacious targeted drug for ATC (Iyer *et al.*, 2018). Targeted drugs such as multiple kinases inhibitors *pazopanib* or *sorafenib* have shown unsatisfactory outcomes in recent trials (Bible *et al.*, 2012; Savvides *et al.*, 2013). Others such as *lenvatinib*

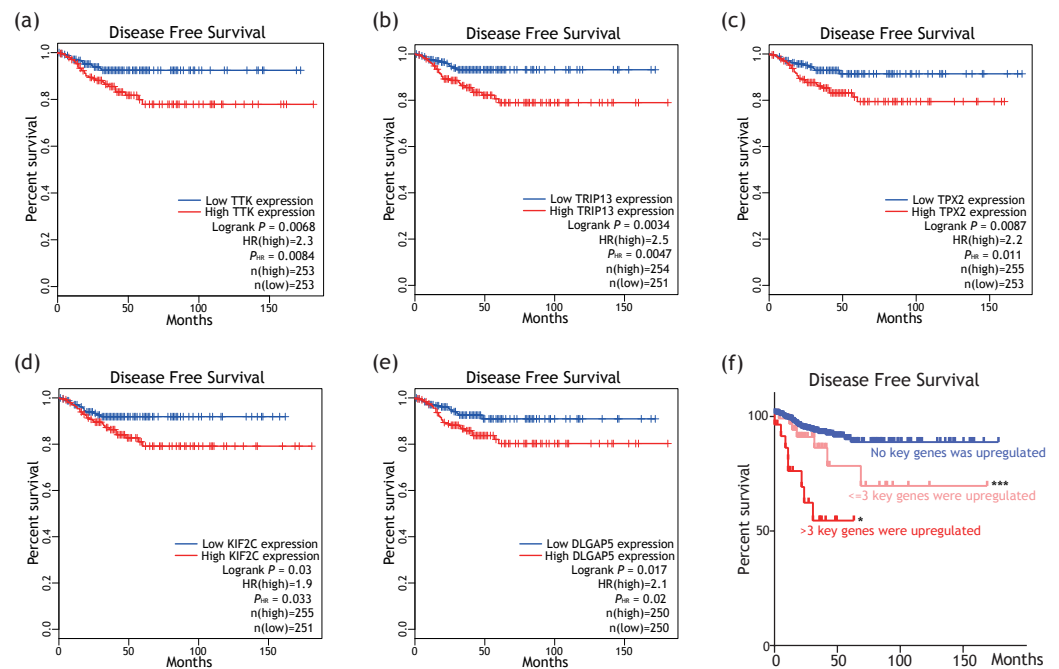


Figure 6 Putative key genes' impact on disease free survival (DFS) among differentiated thyroid cancer patients. (A–E) Survival plots showing higher expression of *TTK*, *TRIP13*, *TPX2*, *KIF2C* or *DLGAP5* was associated with shorter DFS among differentiated thyroid cancer patients. HR, hazard ratio, calculated based on Cox proportional hazards models. $P_{HR} < 0.05$ were regarded as cut-off criteria. No association with DFS was revealed for other five putative key genes. (F) Survival plot showing patients with more (>3) upregulated key genes tended to have shorter DFS than patients with less (≤ 3) or no upregulated key gene. $*P < 0.05$ when compared with ' ≤ 3 key genes were upregulated' group. $***P < 0.001$ when compared with 'No key genes were upregulated' group. These P values were calculated by log-rank tests.

Full-size [DOI: 10.7717/peerj.5822/fig-6](https://doi.org/10.7717/peerj.5822/fig-6)

or *BRAF*-targeted drugs showed encouraging results but are still at the Phase II/III trial stage (Subbiah et al., 2018; Tahara et al., 2017). Hence, it is necessary to promote a deeper understanding of ATC etiology and identify key genes as potential drug targets.

Most likely due to its relatively lower morbidity, ATC is substantively neglected by the research community (Kebebew, 2012). In recent years, omics data have provided researchers with prodigious amounts of information. However, large-scale ATC expression cohorts are still not available. Therefore, firstly we performed a meta-analysis of microarray datasets by retrieving and combining published ATC expression data. We also performed downstream bioinformatics analysis and identified key genes of potential therapeutic values. Notably, as we adopted several analytic pipelines, we applied a unique 'two-stage' data selection procedure to provide data suitable for both pipelines.

Gene enrichment analysis can help researchers to better understand etiology behind diseases. In the present work, we revealed that cell cycle-related pathways were significantly enriched in upregulated DEGs. WGCNA also revealed that cell cycle-enriched gene module showed high association with ATC. Literature also suggested that cell cycle deregulation is a hallmark of ATC (Evans et al., 2012; Pita et al., 2014; Weinberger et al., 2017). Hence, we selected pathways of cell cycle as primary focus of the present work.

Besides identifying cell cycle-related pathways as key pathways in ATC, we also filtered out key genes from cell cycle-related gene cluster. Furthermore, to identify key genes with therapeutic potential, we introduced the concept of ‘cancer/testis’ genes. Genes with expression restricted to germ cells under physiological conditions but were highly expressed in ATC were identified as cancer/testis genes. The cancer/testis genes are usually immunogenic and critical to cellular growth and proliferation ([Simpson et al., 2005](#)). Finally, ten genes with cancer/testis expression pattern were predicted as key genes and potential therapeutic targets of ATC. Next, we will briefly discuss some of these putative key genes by summarizing relevant literature.

In the present work, we identified *TRIP13* as a potential cell cycle-related gene, with the highest MM value indicating its highest centrality. *TRIP13* plays critical roles in cell cycle regulation and chromosome segregation ([Yost et al., 2017](#)). Recent findings suggested that *TRIP13* is overexpressed in and can promote tumorigenesis of several cancers, such as lung adenocarcinoma, chronic lymphocytic leukemia, head and neck cancer and colorectal cancer ([Banerjee et al., 2014](#); [Li et al., 2018](#); [Sheng et al., 2018](#); [Zhou et al., 2017](#)). *TRIP13* can ‘turn off’ the division-inhibiting spindle assembly checkpoint (SAC) complex through transforming the ‘closed’, active structure of the SAC effector Mad2 to an ‘open’ and inactive form ([Alfieri, Chang & Barford, 2018](#); [Ye et al., 2015](#)). *TRIP13* overexpression may cause premature cell division, leading to chromosomal instability and thus contributing to tumorigenesis or resistance to therapy ([Bakhoum & Compton, 2012](#); [Wang et al., 2014](#)). To date, there is no study focused on the exact role of *TRIP13* in the initiation and progression of ATC or other thyroid cancer subtypes.

AURKA encodes aurora kinase A, which is a well-known cell cycle-regulated kinase. *AURKA* participates in microtubule and bipolar spindle formation and stabilization during chromosome segregation ([Nikonova et al., 2013](#)). According to the publication of [Wang et al. \(2016\)](#), *AURKA* was further identified as an ‘extremely highly expressed cancer/testis gene’ of thyroid cancer. Aurora A has been viewed as a potential drug target for many years ([Nikonova et al., 2013](#); [Vader & Lens, 2008](#)). [Isham et al. \(2013\)](#) revealed that both mRNA and protein levels of *AURKA* were significantly increased in ATC samples. What’s more, they revealed that *pazopanib* showed potent inhibition of aurora A kinase. Although *pazopanib* monotherapy showed disappointing clinical activity against ATC, they found that its combination with *paclitaxel* may be promising. They further revealed that synergy effect of the combo therapy can be recapitulated by genetic/pharmacological inhibition of aurora A combined with *paclitaxel* treatment. Together with our *in silico* prediction and other experimental evidence ([Baldini et al., 2014](#)), these indicated that *AURKA* may be a viable therapeutic target of ATC.

DLGAP5, more often referred to as *HURP* (Hepatoma Up-Regulated Protein), plays critical roles in the tumorigenesis or resistance to therapy of several malignancies, such as hepatocellular carcinoma, lung cancer and prostate cancer ([Hassan et al., 2016](#); [Liao et al., 2013](#); [Shi et al., 2017](#)). Interestingly, *HURP* is involved in stabilizing and targeting kinetochore fibers to chromosomes, playing critical roles during the chromosome alignment and segregation ([Wilde, 2006](#)). Further, *HURP* has been regarded as a substrate of aurora kinase A for many years ([Yu et al., 2005](#)). These results again indicated *AURKA*

and its associated pathways or downstream targets such as *HURP*, are appealing targets for the development of anti-ATC therapies.

According to above literature screening and review together with our *in silico* analysis, we recognized that most of these putative key genes seem to be associated with chromosome segregation, a key process of cell cycle. Further literature screening also supported this hypothesis: *TPX2* is known for its key role during mitotic spindle assembly. *TPX2* also binds to aurora kinase A and regulates its activation (Neumayer et al., 2014). *HJURP* is a chaperone specific to *CENPA* (centromere protein A). *HJURP* binds *CENPA* via N-terminal region and mediates its deposition at centromeres (Dunleavy et al., 2009) and is also involved in the expansion of centromeric chromatin and establishment of plastic centromeric chromatin structure (Perpelescu et al., 2015), implicating that it might play vital roles during the formation and maintenance of centromeres. *TTK* (also known as *Msp1*) was reported as critical to centrosome duplication (Fisk, Mattison & Winey, 2003) and normal checkpoint function (Ji, Gao & Yu, 2015), implicating it as a key player during mitotic cell division. *NEK2* can promote faithful chromosome alignment and segregation through phosphorylation of mitotic regulator protein Hec1 (Chen et al., 2002; Wei et al., 2011). *KIF2C* overexpression can promote correct chromosome segregation in chromosomally unstable tumor cell lines (Bakhoun et al., 2009). *KIF15* was found to be critical to kinetochore fibers assembly and chromosome alignment (Brouwers, Mallol Martinez & Vernos, 2017).

Chromosomal instability (CIN), otherwise known as chromosome missegregation, is a hallmark of human malignancies, especially those with anaplastic phenotypes and poor prognosis (Bakhoun & Compton, 2012; McGranahan et al., 2012; Santaguida & Amon, 2015). The exact roles of CIN in the initiation and progression of cancer are rather complex and still not clear. It's widely acknowledged that, CIN is at least a vital process during tumor formation and progression. Interestingly, 'intolerable' level of CIN is cytotoxic and also fetal to cancer cells (Janssen, Kops & Medema, 2009; Weaver et al., 2007). Transcriptional regulation on chromosomal stability may be more complicated. For instance, as reviewed above, some of these putative key genes were promote CIN to drive the progression of ATC, but others may play anti-CIN roles, although their anti-CIN effects may merely function to maintain a certain life-sustaining level rather than to inhibit tumor growth. Nevertheless, as we revealed that putative key ATC-contributing genes with cancer/testis expression pattern were chromosome segregation-related, these results gave us valuable hint that chromosome segregation may be a critical process of cell cycle in both the etiology and treatment of ATC.

In the present work, we also identified several key genes without palpable cancer/testis expression pattern. These genes may also harbor critical function in the etiology of ATC. Some of them were still associated with chromosome segregation (such as *CENPF*, *CENPA*, *CENPN*, *ASPM*, *KIF23*, *KIF14*, *CDC20*, etc.). Apart from these chromosome segregation-related genes, we also identified several genes such as *RRM2* as putative ATC-contributing genes. *RRM2* encodes the ribonucleotide reductase (RNR) regulatory subunit M2. RNR catalyzes the rate-limiting step of deoxyribonucleotides formation, contributing to DNA replication and cell proliferation. Regulated by *E2F1* through the

promoter region, *RRM2* shows cell-cycle-dependent expression (DeGregori, Kowalik & Nevins, 1995). *RRM2* is widely acknowledged as a pro-carcinogenic gene upregulated in several cancers (Morikawa et al., 2010a; Morikawa et al., 2010b; Wang et al., 2012). Using RNA sequencing and bioinformatics analyses, Qiu et al. found that *RRM2* is a potential key gene in the development of PTC (Qiu et al., 2016). More importantly, Fang et al. (2016) found that *RRM2* protein expression was up-expressed in undifferentiated thyroid cancer samples. Together with the findings from our *in silico* analyses, these results indicated *RRM2* as a key gene in ATC etiology. However, different from those key genes with cancer/testis expression pattern, *RRM2* shows ubiquitous expression among various organs. Hence, drugs targeting *RRM2* may bring serious adverse reactions.

Unavoidably, the present work has several limitations. The most obvious limitation was that, because large-scale ATC transcriptional data are not available, we used the TCGA well-differentiated thyroid cancer data for characterization of putative key genes' impact on survival. Most of the putative key genes showed no association with overall survival, but many of them showed strong association with disease free survival. We presumed that these may due to the long life expectancy of well-differentiated thyroid cancer reducing the power of statistical tests, or because biological behaviors behind reoccurrence/progression of well-differentiated thyroid tumors resemble more like the progressive nature of ATC. Nevertheless, as ATC can also arise *de novo*, these results can only provide a suggestive but imprecise characterization.

To summarize, by meta-analysis of microarray datasets, we re-used and integrated those scattered ATC expression data. Based on bioinformatics analyses, we mined the data and identified several novel putative key genes in ATC etiology. Cell cycle-related pathways, especially pathways associated with chromosome segregation, were predicted to play critical role in the progression of ATC. Key genes with cancer/testis expression pattern were further filtered out as putative therapeutic targets. Future studies should focus on the experimental validation of these predicted key genes in the initiation and progression of ATC.

ACKNOWLEDGEMENTS

We would like to thank Ph.D. candidate Na Qin from the Department of Epidemiology and Biostatistics, School of Public Health, for her suggestions to the study design. We would like to thank undergraduate student Ming-yu Zhuang for her help with paperwork.

ADDITIONAL INFORMATION AND DECLARATIONS

Funding

The authors received no funding for this work.

Competing Interests

The authors declare there are no competing interests.

Author Contributions

- Mu Liu and Yu-lu Qiu conceived and designed the experiments, performed the experiments, analyzed the data, authored or reviewed drafts of the paper, approved the final draft.
- Tong Jin performed the experiments, analyzed the data, contributed reagents/materials/analysis tools, prepared figures and/or tables, approved the final draft.
- Yin Zhou and Zhi-yuan Mao prepared figures and/or tables.
- Yong-jie Zhang conceived and designed the experiments, authored or reviewed drafts of the paper, approved the final draft.

Data Availability

The following information was supplied regarding data availability:

Raw data is available in the [Supplemental Materials](#).

Supplemental Information

Supplemental information for this article can be found online at <http://dx.doi.org/10.7717/peerj.5822#supplemental-information>.

REFERENCES

- Aldred MA, Huang Y, Liyanarachchi S, Pellegata NS, Gimm O, Jhiang S, Davuluri RV, De la Chapelle A, Eng C. 2004.** Papillary and follicular thyroid carcinomas show distinctly different microarray expression profiles and can be distinguished by a minimum of five genes. *Journal of Clinical Oncology* **22**:3531–3539 DOI [10.1200/JCO.2004.08.127](https://doi.org/10.1200/JCO.2004.08.127).
- Alfieri C, Chang L, Barford D. 2018.** Mechanism for remodelling of the cell cycle checkpoint protein MAD2 by the ATPase TRIP13. *Nature* **559**:274–278 DOI [10.1038/s41586-018-0281-1](https://doi.org/10.1038/s41586-018-0281-1).
- Bakhom SF, Compton DA. 2012.** Chromosomal instability and cancer: a complex relationship with therapeutic potential. *Journal of Clinical Investigation* **122**:1138–1143 DOI [10.1172/JCI59954](https://doi.org/10.1172/JCI59954).
- Bakhom SF, Thompson SL, Manning AL, Compton DA. 2009.** Genome stability is ensured by temporal control of kinetochore-microtubule dynamics. *Nature Cell Biology* **11**:27–35 DOI [10.1038/ncb1809](https://doi.org/10.1038/ncb1809).
- Baldini E, Tuccilli C, Prinzi N, Sorrenti S, Antonelli A, Gnassi L, Morrone S, Moretti C, Bononi M, Arlot-Bonnemains Y, D'Armiento M, Ulisse S. 2014.** Effects of selective inhibitors of Aurora kinases on anaplastic thyroid carcinoma cell lines. *Endocrine-Related Cancer* **21**:797–811 DOI [10.1530/ERC-14-0299](https://doi.org/10.1530/ERC-14-0299).
- Banerjee R, Russo N, Liu M, Basrur V, Bellile E, Palanisamy N, Scanlon CS, Van Tubergen E, Inglehart RC, Metwally T, Mani RS, Yocum A, Nyati MK, Castilho RM, Varambally S, Chinnaiyan AM, D'Silva NJ. 2014.** TRIP13 promotes error-prone nonhomologous end joining and induces chemoresistance in head and neck cancer. *Nature Communications* **5**:4527 DOI [10.1038/ncomms5527](https://doi.org/10.1038/ncomms5527).

- Bible KC, Ryder M. 2016.** Evolving molecularly targeted therapies for advanced-stage thyroid cancers. *Nature Reviews: Clinical Oncology* **13**:403–416 DOI [10.1038/nrclinonc.2016.19](https://doi.org/10.1038/nrclinonc.2016.19).
- Bible KC, Suman VJ, Menefee ME, Smallridge RC, Molina JR, Maples WJ, Karlin NJ, Traynor AM, Kumar P, Goh BC, Lim WT, Bossou AR, Isham CR, Webster KP, Kukla AK, Bieber C, Burton JK, Harris P, Erlichman C, Mayo Phase C, Mayo Clinic Endocrine Malignancies Disease Oriented G. 2012.** A multiinstitutional phase 2 trial of pazopanib monotherapy in advanced anaplastic thyroid cancer. *Journal of Clinical Endocrinology and Metabolism* **97**:3179–3184 DOI [10.1210/jc.2012-1520](https://doi.org/10.1210/jc.2012-1520).
- Brouwers N, Mallol Martinez N, Vernos I. 2017.** Role of Kif15 and its novel mitotic partner KBP in K-fiber dynamics and chromosome alignment. *PLOS ONE* **12**:e0174819 DOI [10.1371/journal.pone.0174819](https://doi.org/10.1371/journal.pone.0174819).
- Chen C, Grennan K, Badner J, Zhang D, Gershon E, Jin L, Liu C. 2011.** Removing batch effects in analysis of expression microarray data: an evaluation of six batch adjustment methods. *PLOS ONE* **6**:e17238 DOI [10.1371/journal.pone.0017238](https://doi.org/10.1371/journal.pone.0017238).
- Chen Y, Riley DJ, Zheng L, Chen PL, Lee WH. 2002.** Phosphorylation of the mitotic regulator protein Hec1 by Nek2 kinase is essential for faithful chromosome segregation. *Journal of Biological Chemistry* **277**:49408–49416 DOI [10.1074/jbc.M207069200](https://doi.org/10.1074/jbc.M207069200).
- Chin CH, Chen SH, Wu HH, Ho CW, Ko MT, Lin CY. 2014.** cytoHubba: identifying hub objects and sub-networks from complex interactome. *BMC Systems Biology* **8**(Suppl 4):S11 DOI [10.1186/1752-0509-8-S4-S11](https://doi.org/10.1186/1752-0509-8-S4-S11).
- DeGregori J, Kowalik T, Nevins JR. 1995.** Cellular targets for activation by the E2F1 transcription factor include DNA synthesis- and G1/S-regulatory genes. *Molecular and Cellular Biology* **15**:4215–4224 DOI [10.1128/MCB.15.8.4215](https://doi.org/10.1128/MCB.15.8.4215).
- Disease GBD, Injury I, Prevalence C. 2016.** Global, regional, and national incidence, prevalence, and years lived with disability for 310 diseases and injuries, 1990–2015: a systematic analysis for the Global Burden of Disease Study 2015. *The Lancet* **388**:1545–1602 DOI [10.1016/S0140-6736\(16\)31678-6](https://doi.org/10.1016/S0140-6736(16)31678-6).
- Dom G, Tarabichi M, Unger K, Thomas G, Oczko-Wojciechowska M, Bogdanova T, Jarzab B, Dumont JE, Detours V, Maenhaut C. 2012.** A gene expression signature distinguishes normal tissues of sporadic and radiation-induced papillary thyroid carcinomas. *British Journal of Cancer* **107**:994–1000 DOI [10.1038/bjc.2012.302](https://doi.org/10.1038/bjc.2012.302).
- Dunleavy EM, Roche D, Tagami H, Lacoste N, Ray-Gallet D, Nakamura Y, Daigo Y, Nakatani Y, Almouzni-Pettinotti G. 2009.** HJURP is a cell-cycle-dependent maintenance and deposition factor of CENP-A at centromeres. *Cell* **137**:485–497 DOI [10.1016/j.cell.2009.02.040](https://doi.org/10.1016/j.cell.2009.02.040).
- Evans JJ, Crist HS, Durvesh S, Bruggeman RD, Goldenberg D. 2012.** A comparative study of cell cycle mediator protein expression patterns in anaplastic and papillary thyroid carcinoma. *Cancer Biology & Therapy* **13**:776–781 DOI [10.4161/cbt.20560](https://doi.org/10.4161/cbt.20560).
- Fagerberg L, Hallstrom BM, Oksvold P, Kampf C, Djureinovic D, Odeberg J, Habuka M, Tahmasebpour S, Danielsson A, Edlund K, Asplund A, Sjostedt E, Lundberg E, Szigartyo CA, Skogs M, Takanen JO, Berling H, Tegel H, Mulder J, Nilsson P, Schwenk JM, Lindskog C, Danielsson F, Mardinoglu A, Sivertsson A, Von Feilitzen**

- K, Forsberg M, Zwahlen M, Olsson I, Navani S, Huss M, Nielsen J, Ponten F, Uhlen M. 2014. Analysis of the human tissue-specific expression by genome-wide integration of transcriptomics and antibody-based proteomics. *Molecular & Cellular Proteomics* 13:397–406 DOI 10.1074/mcp.M113.035600.
- Fang Z, Song R, Gong C, Zhang X, Ren G, Li J, Chen Y, Qiu L, Mei L, Zhang R, Xiang X, Chen X, Shao J. 2016. Ribonucleotide reductase large subunit M1 plays a different role in the invasion and metastasis of papillary thyroid carcinoma and undifferentiated thyroid carcinoma. *Tumour Biology* 37:3515–3526 DOI 10.1007/s13277-015-4175-7.
- Fisk HA, Mattison CP, Winey M. 2003. Human Mps1 protein kinase is required for centrosome duplication and normal mitotic progression. *Proceedings of the National Academy of Sciences of the United States of America* 100:14875–14880 DOI 10.1073/pnas.2434156100.
- Giordano TJ, Kuick R, Thomas DG, Misek DE, Vinco M, Sanders D, Zhu Z, Ciampi R, Roh M, Shedden K, Gauger P, Doherty G, Thompson NW, Hanash S, Koenig RJ, Nikiforov YE. 2005. Molecular classification of papillary thyroid carcinoma: distinct BRAF, RAS, and RET/PTC mutation-specific gene expression profiles discovered by DNA microarray analysis. *Oncogene* 24:6646–6656 DOI 10.1038/sj.onc.1208822.
- Haddad RI, Lydiatt WM, Ball DW, Busaidy NL, Byrd D, Callender G, Dickson P, Duh QY, Ehya H, Haymart M, Hoh C, Hunt JP, Iagaru A, Kandeel F, Kopp P, Lamonica DM, McCaffrey JC, Moley JF, Parks L, Raeburn CD, Ridge JA, Ringel MD, Scheri RP, Shah JP, Smallridge RC, Sturgeon C, Wang TN, Wirth LJ, Hoffmann KG, Hughes M. 2015. Anaplastic Thyroid Carcinoma, Version 2.2015. *Journal of the National Comprehensive Cancer Network* 13:1140–1150 DOI 10.6004/jnccn.2015.0139.
- Hanzelmann S, Castelo R, Guinney J. 2013. GSVA: gene set variation analysis for microarray and RNA-seq data. *BMC Bioinformatics* 14:7 DOI 10.1186/1471-2105-14-7.
- Hassan M, El Khattouti A, Ejaeidi A, Ma T, Day WA, Espinoza I, Vijayakumar S, Gomez CR. 2016. Elevated expression of hepatoma up-regulated protein inhibits gamma-irradiation-induced apoptosis of prostate cancer cells. *Journal of Cellular Biochemistry* 117:1308–1318 DOI 10.1002/jcb.25419.
- Isham CR, Bossou AR, Negron V, Fisher KE, Kumar R, Marlow L, Lingle WL, Smallridge RC, Sherman EJ, Suman VJ, Copland JA, Bible KC. 2013. Pazopanib enhances paclitaxel-induced mitotic catastrophe in anaplastic thyroid cancer. *Science Translational Medicine* 5:166ra3 DOI 10.1126/scitranslmed.3004358.
- Iyer PC, Dadu R, Ferrarotto R, Busaidy NL, Habra MA, Zafereo M, Gross N, Hess KR, Gule-Monroe M, Williams MD, Cabanillas ME. 2018. Real-world experience with targeted therapy for the treatment of anaplastic thyroid carcinoma. *Thyroid* 28:79–87 DOI 10.1089/thy.2017.0285.
- Janssen A, Kops GJ, Medema RH. 2009. Elevating the frequency of chromosome mis-segregation as a strategy to kill tumor cells. *Proceedings of the National Academy of Sciences of the United States of America* 106:19108–19113 DOI 10.1073/pnas.0904343106.

- Ji Z, Gao H, Yu H. 2015. CELL DIVISION CYCLE. Kinetochore attachment sensed by competitive Mps1 and microtubule binding to Ndc80C. *Science* **348**:1260–1264 DOI [10.1126/science.aaa4029](https://doi.org/10.1126/science.aaa4029).
- Kebebew E. 2012. Anaplastic thyroid cancer: rare, fatal, and neglected. *Surgery* **152**:1088–1089 DOI [10.1016/j.surg.2012.08.059](https://doi.org/10.1016/j.surg.2012.08.059).
- Kitahara CM, Sosa JA. 2016. The changing incidence of thyroid cancer. *Nature Reviews: Endocrinology* **12**:646–653 DOI [10.1038/nrendo.2016.110](https://doi.org/10.1038/nrendo.2016.110).
- Kojic SL, Strugnell SS, Wiseman SM. 2011. Anaplastic thyroid cancer: a comprehensive review of novel therapy. *Expert Review of Anticancer Therapy* **11**:387–402 DOI [10.1586/era.10.179](https://doi.org/10.1586/era.10.179).
- Lachmann A, Torre D, Keenan AB, Jagodnik KM, Lee HJ, Wang L, Silverstein MC, Ma'ayan A. 2018. Massive mining of publicly available RNA-seq data from human and mouse. *Nature Communications* **9**:Article 1366 DOI [10.1038/s41467-018-03751-6](https://doi.org/10.1038/s41467-018-03751-6).
- Landa I, Ibrahimasic T, Boucai L, Sinha R, Knauf JA, Shah RH, Dogan S, Ricarte-Filho JC, Krishnamoorthy GP, Xu B, Schultz N, Berger MF, Sander C, Taylor BS, Ghossein R, Ganly I, Fagin JA. 2016. Genomic and transcriptomic hallmarks of poorly differentiated and anaplastic thyroid cancers. *Journal of Clinical Investigation* **126**:1052–1066 DOI [10.1172/JCI85271](https://doi.org/10.1172/JCI85271).
- Langfelder P, Horvath S. 2008. WGCNA: an R package for weighted correlation network analysis. *BMC Bioinformatics* **9**:559 DOI [10.1186/1471-2105-9-559](https://doi.org/10.1186/1471-2105-9-559).
- Li W, Zhang G, Li X, Wang X, Li Q, Hong L, Shen Y, Zhao C, Gong X, Chen Y, Zhou J. 2018. Thyroid hormone receptor interactor 13 (TRIP13) overexpression associated with tumor progression and poor prognosis in lung adenocarcinoma. *Biochemical and Biophysical Research Communications* **499**:416–424 DOI [10.1016/j.bbrc.2018.03.129](https://doi.org/10.1016/j.bbrc.2018.03.129).
- Liao W, Liu W, Yuan Q, Liu X, Ou Y, He S, Yuan S, Qin L, Chen Q, Nong K, Mei M, Huang J. 2013. Silencing of DLGAP5 by siRNA significantly inhibits the proliferation and invasion of hepatocellular carcinoma cells. *PLOS ONE* **8**:e80789 DOI [10.1371/journal.pone.0080789](https://doi.org/10.1371/journal.pone.0080789).
- McGranahan N, Burrell RA, Endesfelder D, Novelli MR, Swanton C. 2012. Cancer chromosomal instability: therapeutic and diagnostic challenges. *EMBO Reports* **13**:528–538 DOI [10.1038/embor.2012.61](https://doi.org/10.1038/embor.2012.61).
- Molinaro E, Romei C, Biagini A, Sabini E, Agate L, Mazzeo S, Materazzi G, Sellari-Franceschini S, Ribechini A, Torregrossa L, Basolo F, Vitti P, Elisei R. 2017. Anaplastic thyroid carcinoma: from clinicopathology to genetics and advanced therapies. *Nature Reviews: Endocrinology* **13**:644–660 DOI [10.1038/nrendo.2017.76](https://doi.org/10.1038/nrendo.2017.76).
- Morikawa T, Hino R, Uozaki H, Maeda D, Ushiku T, Shinozaki A, Sakatani T, Fukayama M. 2010a. Expression of ribonucleotide reductase M2 subunit in gastric cancer and effects of RRM2 inhibition in vitro. *Human Pathology* **41**:1742–1748 DOI [10.1016/j.humpath.2010.06.001](https://doi.org/10.1016/j.humpath.2010.06.001).
- Morikawa T, Maeda D, Kume H, Homma Y, Fukayama M. 2010b. Ribonucleotide reductase M2 subunit is a novel diagnostic marker and a potential therapeutic target in bladder cancer. *Histopathology* **57**:885–892 DOI [10.1111/j.1365-2559.2010.03725.x](https://doi.org/10.1111/j.1365-2559.2010.03725.x).

- Neumayer G, Belzil C, Gruss OJ, Nguyen MD. 2014. TPX2: of spindle assembly, DNA damage response, and cancer. *Cellular and Molecular Life Sciences* 71:3027–3047 DOI 10.1007/s00018-014-1582-7.
- Nikonova AS, Astsaturov I, Serebriiskii IG, Dunbrack Jr RL, Golemis EA. 2013. Aurora A kinase (AURKA) in normal and pathological cell division. *Cellular and Molecular Life Sciences* 70:661–687 DOI 10.1007/s00018-012-1073-7.
- Paunovic IR, Sipetic SB, Zoric GV, Diklic AD, Savic DV, Marinkovic J, Zivaljevic VR. 2015. Survival and prognostic factors of anaplastic thyroid carcinoma. *Acta Chirurgica Belgica* 115:62–67 DOI 10.1080/00015458.2015.11681068.
- Perpelescu M, Hori T, Toyoda A, Misu S, Monma N, Ikeo K, Obuse C, Fujiyama A, Fukagawa T. 2015. HJURP is involved in the expansion of centromeric chromatin. *Molecular Biology of the Cell* 26:2742–2754 DOI 10.1091/mbc.E15-02-0094.
- Pita JM, Figueiredo IF, Moura MM, Leite V, Cavaco BM. 2014. Cell cycle deregulation and TP53 and RAS mutations are major events in poorly differentiated and undifferentiated thyroid carcinomas. *Journal of Clinical Endocrinology and Metabolism* 99:E497–E507 DOI 10.1210/jc.2013-1512.
- Qiu J, Zhang W, Xia Q, Liu F, Li L, Zhao S, Gao X, Zang C, Ge R, Sun Y. 2016. RNA sequencing identifies crucial genes in papillary thyroid carcinoma (PTC) progression. *Experimental and Molecular Pathology* 100:151–159 DOI 10.1016/j.yexmp.2015.12.011.
- Ramasamy A, Mondry A, Holmes CC, Altman DG. 2008. Key issues in conducting a meta-analysis of gene expression microarray datasets. *PLOS Medicine* 5:e184 DOI 10.1371/journal.pmed.0050184.
- R Core Team. 2017. R: a language and environment for statistical computing. Version 3.3.4. Vienna: R Foundation for Statistical Computing. Available at <https://www.R-project.org/>.
- Santaguida S, Amon A. 2015. Short- and long-term effects of chromosome mis-segregation and aneuploidy. *Nature Reviews: Molecular Cell Biology* 16:473–485 DOI 10.1038/nrm4025.
- Savvides P, Nagaiah G, Lavertu P, Fu P, Wright JJ, Chapman R, Wasman J, Dowlati A, Remick SC. 2013. Phase II trial of sorafenib in patients with advanced anaplastic carcinoma of the thyroid. *Thyroid* 23:600–604 DOI 10.1089/thy.2012.0103.
- Sheng N, Yan L, Wu K, You W, Gong J, Hu L, Tan G, Chen H, Wang Z. 2018. TRIP13 promotes tumor growth and is associated with poor prognosis in colorectal cancer. *Cell Death & Disease* 9:Article 402 DOI 10.1038/s41419-018-0434-z.
- Shi YX, Yin JY, Shen Y, Zhang W, Zhou HH, Liu ZQ. 2017. Genome-scale analysis identifies NEK2, DLGAP5 and ECT2 as promising diagnostic and prognostic biomarkers in human lung cancer. *Scientific Reports* 7:8072 DOI 10.1038/s41598-017-08615-5.
- Simpson AJ, Caballero OL, Jungbluth A, Chen YT, Old LJ. 2005. Cancer/testis antigens, gametogenesis and cancer. *Nature Reviews: Cancer* 5:615–625 DOI 10.1038/nrc1669.
- Smallridge RC, Copland JA. 2010. Anaplastic thyroid carcinoma: pathogenesis and emerging therapies. *Clinical Oncology (Royal College of Radiologists)* 22:486–497 DOI 10.1016/j.clon.2010.03.013.

- Subbiah V, Kreitman RJ, Wainberg ZA, Cho JY, Schellens JHM, Soria JC, Wen PY, Zielinski C, Cabanillas ME, Urbanowitz G, Mookerjee B, Wang D, Rangwala F, Keam B. 2018. Dabrafenib and trametinib treatment in patients with locally advanced or metastatic BRAF V600-mutant anaplastic thyroid cancer. *Journal of Clinical Oncology* 36:7–13 DOI 10.1200/JCO.2017.73.6785.
- Tahara M, Kiyota N, Yamazaki T, Chayahara N, Nakano K, Inagaki L, Toda K, Enokida T, Minami H, Imamura Y, Sasaki T, Suzuki T, Fujino K, Dutcus CE, Takahashi S. 2017. Lenvatinib for anaplastic thyroid cancer. *Frontiers in Oncology* 7:Article 25 DOI 10.3389/fonc.2017.00025.
- Tang Z, Li C, Kang B, Gao G, Li C, Zhang Z. 2017. GEPIA: a web server for cancer and normal gene expression profiling and interactive analyses. *Nucleic Acids Research* 45:W98–W102 DOI 10.1093/nar/gkx247.
- Tiedje V, Stuschke M, Weber F, Dralle H, Moss L, Fuhrer D. 2018. Anaplastic thyroid carcinoma: review of treatment protocols. *Endocrine-Related Cancer* 25:R153–R161 DOI 10.1530/ERC-17-0435.
- Tomas G, Tarabichi M, Gacquer D, Hebrant A, Dom G, Dumont JE, Keutgen X, Fahey TJ, Maenhaut 3rd C, Detours V. 2012. A general method to derive robust organ-specific gene expression-based differentiation indices: application to thyroid cancer diagnostic. *Oncogene* 31:4490–4498 DOI 10.1038/onc.2011.626.
- Vader G, Lens SM. 2008. The Aurora kinase family in cell division and cancer. *Biochimica et Biophysica Acta (BBA)—Bioenergetics* 1786:60–72 DOI 10.1016/j.bbcan.2008.07.003.
- Von Roemeling CA, Marlow LA, Pinkerton AB, Crist A, Miller J, Tun HW, Smallridge RC, Copland JA. 2015. Aberrant lipid metabolism in anaplastic thyroid carcinoma reveals stearoyl CoA desaturase 1 as a novel therapeutic target. *Journal of Clinical Endocrinology and Metabolism* 100:E697–E709 DOI 10.1210/jc.2014-2764.
- Wang C, Gu Y, Zhang K, Xie K, Zhu M, Dai N, Jiang Y, Guo X, Liu M, Dai J, Wu L, Jin G, Ma H, Jiang T, Yin R, Xia Y, Liu L, Wang S, Shen B, Huo R, Wang Q, Xu L, Yang L, Huang X, Shen H, Sha J, Hu Z. 2016. Systematic identification of genes with a cancer-testis expression pattern in 19 cancer types. *Nature Communications* 7:Article 10499 DOI 10.1038/ncomms10499.
- Wang K, Sturt-Gillespie B, Hittle JC, Macdonald D, Chan GK, Yen TJ, Liu ST. 2014. Thyroid hormone receptor interacting protein 13 (TRIP13) AAA-ATPase is a novel mitotic checkpoint-silencing protein. *Journal of Biological Chemistry* 289:23928–23937 DOI 10.1074/jbc.M114.585315.
- Wang LM, Lu FF, Zhang SY, Yao RY, Xing XM, Wei ZM. 2012. Overexpression of catalytic subunit M2 in patients with ovarian cancer. *Chinese Medical Journal* 125:2151–2156.
- Weaver BA, Silk AD, Montagna C, Verdier-Pinard P, Cleveland DW. 2007. Aneuploidy acts both oncogenically and as a tumor suppressor. *Cancer Cell* 11:25–36 DOI 10.1016/j.ccr.2006.12.003.
- Wei R, Ngo B, Wu G, Lee WH. 2011. Phosphorylation of the Ndc80 complex protein, HEC1, by Nek2 kinase modulates chromosome alignment and signaling

of the spindle assembly checkpoint. *Molecular Biology of the Cell* **22**:3584–3594
DOI [10.1091/mbc.E11-01-0012](https://doi.org/10.1091/mbc.E11-01-0012).

Weinberger P, Ponny SR, Xu H, Bai S, Smallridge R, Copland J, Sharma A. 2017. Cell cycle M-phase genes are highly upregulated in anaplastic thyroid carcinoma. *Thyroid* **27**:236–252 DOI [10.1089/thy.2016.0285](https://doi.org/10.1089/thy.2016.0285).

Wilde A. 2006. HURP on we're off to the kinetochore! *Journal of Cell Biology* **173**:829–831 DOI [10.1083/jcb.200605150](https://doi.org/10.1083/jcb.200605150).

Xia J, Gill EE, Hancock RE. 2015. NetworkAnalyst for statistical, visual and network-based meta-analysis of gene expression data. *Nature Protocols* **10**:823–844 DOI [10.1038/nprot.2015.052](https://doi.org/10.1038/nprot.2015.052).

Ye Q, Rosenberg SC, Moeller A, Speir JA, Su TY, Corbett KD. 2015. TRIP13 is a protein-remodeling AAA+ ATPase that catalyzes MAD2 conformation switching. *Elife* **4**:e07367 DOI [10.7554/eLife.07367](https://doi.org/10.7554/eLife.07367).

Yost S, De Wolf B, Hanks S, Zachariou A, Marozzi C, Clarke M, De Voer R, Etemad B, Uijtewaal E, Ramsay E, Wylie H, Elliott A, Picton S, Smith A, Smithson S, Seal S, Ruark E, Houge G, Pines J, Kops G, Rahman N. 2017. Biallelic TRIP13 mutations predispose to Wilms tumor and chromosome missegregation. *Nature Genetics* **49**:1148–1151 DOI [10.1038/ng.3883](https://doi.org/10.1038/ng.3883).

Yu CT, Hsu JM, Lee YC, Tsou AP, Chou CK, Huang CY. 2005. Phosphorylation and stabilization of HURP by Aurora-A: implication of HURP as a transforming target of Aurora-A. *Molecular and Cellular Biology* **25**:5789–5800 DOI [10.1128/MCB.25.14.5789-5800.2005](https://doi.org/10.1128/MCB.25.14.5789-5800.2005).

Zhou K, Zhang W, Zhang Q, Gui R, Zhao H, Chai X, Li Y, Wei X, Song Y. 2017. Loss of thyroid hormone receptor interactor 13 inhibits cell proliferation and survival in human chronic lymphocytic leukemia. *Oncotarget* **8**:25469–25481 DOI [10.18632/oncotarget.16038](https://doi.org/10.18632/oncotarget.16038).