



# Influenced but not determined by historical events: genetic, demographic and morphological differentiation in *Heleobia ascotanensis* from the Chilean Altiplano

Moisés A. Valladares<sup>1</sup>, Marco A. Méndez<sup>1</sup> and Gonzalo A. Collado<sup>2</sup>

<sup>1</sup>Laboratorio de Genética y Evolución, Departamento de Ciencias Ecológicas, Facultad de Ciencias, Universidad de Chile, Santiago, Región Metropolitana, Chile

<sup>2</sup>Departamento de Ciencias Básicas, Facultad de Ciencias, Universidad del Bío-Bío, Chillán, Región del Bío-Bío, Chile

## ABSTRACT

In the present study, we focus on the phylogeographic pattern, demographic history and morphological differentiation of *Heleobia ascotanensis*, a freshwater gastropod restricted to the Ascotán saltpan in the Chilean Altiplano. The current distribution of the species is limited to twelve isolated or partially isolated springs that were affected by transitions between humid and arid periods during last glaciations. The genetic analysis of 322 specimens showed that *H. ascotanensis* is subdivided into three genetically divergent populations, with low and moderate degrees of historical gene flow among them and incipient morphological differentiation as a consequence of genetic and geographical isolation. Molecular analyses revealed different demographic histories among populations which seem to respond independently to climatic events, probably due to an environmental imposition and idiosyncratic strategies developed to cope with water availability. The results of this study and co-distributed taxa support the hypothesis that contemporary and historical events have influenced microevolutionary differentiation of these snails, although there is a need to complement further information to predict genetic or morphological divergence at microgeographic scale.

Submitted 6 February 2018  
Accepted 21 September 2018  
Published 17 December 2018

Corresponding author  
Gonzalo A. Collado,  
gcollado@ubiobio.cl,  
collado.gonzalo@gmail.com

Academic editor  
Marcial Escudero

Additional Information and  
Declarations can be found on  
page 17

DOI 10.7717/peerj.5802

© Copyright  
2018 Valladares et al.

Distributed under  
Creative Commons CC-BY 4.0

OPEN ACCESS

**Subjects** Taxonomy, Freshwater Biology, Population Biology

**Keywords** Microgeographic differentiation, Morphometric analysis, Phylogeography, Freshwater snails, Humid-arid transitions

## INTRODUCTION

The physiography of the South American Altiplano landscape is characterized by several closed basins mainly originated by a high volcanic activity that took place since the Miocene, accompanied by complex climatic events (*Fornari, Risacher & Féraud, 2001; Risacher, Alonso & Salazar, 2003; Strecker et al., 2007; Placzek, Quade & Patchett, 2011; Placzek, Quade & Patchett, 2013*). At present, the internal hydrological systems constitute closed evaporitic ecosystems with unique properties transforming the region in a natural scenery for the study of the evolutionary diversification of aquatic biota (*Collado, Valladares & Méndez, 2013; Vila et al., 2013; Victoriano et al., 2015*). Nowadays the Altiplano is

characterized by having conditions of aridity during most of the year, except for humid period known as South American Summer Monsoon (SASM) from December to March (Zhou & Lau, 1998; Garreaud et al., 2009; Marengo et al., 2012). The SASM is characterized by intense convective activity and precipitation that reach its maximum during the austral summer (Carvalho et al., 2011; Carvalho & Cavalcanti, 2016), and its year-to-year variability in precipitation is mainly associated to changes in the mean zonal wind over the Altiplano, largely modulated by sea surface temperature (SST) across the tropical Pacific Ocean (Vuille, Bradley & Keimig, 2000; Garreaud & Aceituno, 2001). Regarding variability in a temporal climatic context, the SASM showed a coherent regional signal of a weak monsoon during the Medieval Climate Anomaly period (c. 950–1250) and a stronger event during the Little Ice Age (c. 1450–1850) (Carvalho et al., 2011). Contrasting the actual hydrographic conditions on the Altiplano mainly modulated by the SASM, during the Pleistocene most of the region was covered by great paleolakes over 3.650 m altitude (influenced by global glaciations), which connected numerous hydrographic basins currently disconnected (Lavenu, Fornari & Sebrier, 1984; Fornari, Risacher & Féraud, 2001; Blard et al., 2011; Placzek, Quade & Patchett, 2013). With the transition of humid periods that characterized the Plio-Pleistocene to dry seasons prevailing during the Holocene, the aquatic environments were fragmented causing the isolation of populations confined to these systems (e.g., Keller & Soto, 1998).

Taxa distributed in patchy aquatic systems show highly geographically structured populations, probably because appropriate habitats are often surrounded by inappropriate environments, therefore gene flow usually depends on the dispersal capabilities of the species (Johnson, 2005). The genetic structure of freshwater fauna confined to the Altiplano usually reflects environmental changes that fragmented previously continuous hydrological systems, changes particularly important for poorly dispersing species such as snails and amphipods (Seidel, Lang & Berg, 2009; Murphy et al., 2012). This pattern has been demonstrated at species and population level in species of snails (Collado, Vila & Méndez, 2011; Collado & Méndez, 2012a; Collado & Méndez, 2013), fishes (Keller & Soto, 1998; Morales, Vila & Poulin, 2011; Cruz-Jofré et al., 2016; Guerrero-Jiménez et al., 2017) and amphibians (Sáez et al., 2014; Victoriano et al., 2015).

A large number of species of small caenogastropods of the genus *Heleobia* Stimpson, 1865 inhabit a variety of brackish and freshwater ecosystems in the Andean Altiplano (Courty, 1907; Pilsbry, 1924; Biese, 1944; Biese, 1947; Haas, 1955; Hubendick, 1955; Dejoux & Iltis, 1992; Collado, 2015; Collado, Valladares & Méndez, 2013; Collado, Valladares & Méndez, 2016). Given the similarity in external shell morphology, shell traits (the only ones available in some of them) become inconsistent at the time of identifying and delimiting species in the group (Cazzaniga, 2011; Collado, Valladares & Méndez, 2013), although morphometric analyses have detected some morphological differentiation among different lineages (Collado, Valladares & Méndez, 2016). The Ascotán saltpan is located in the southern Altiplano in Chile and is the type locality of *Heleobia ascotanensis* (Courty, 1907), a species comprising five subspecies that were described based uniquely on external shell morphology (Courty, 1907); the original description by Courty indicates that in the saltpan, besides *Heleobia*, originally described under the genus *Paludestrina* d'Orbigny, 1840, dwell two

species of the genus *Bithinella* Fischer, 1885 (see [Collado & Méndez, 2012b](#)). Subsequent studies have shown that only *Heleobia* specimens are found in the saltpan, therefore [Courty \(1907\)](#) probably overestimated the number of species in the system due to subtle morphological differences among the individuals analysed ([Collado, Valladares & Méndez, 2013](#); [Collado, Valladares & Méndez, 2016](#)). Previous molecular phylogenetic studies have showed that *Heleobia* populations from this saltpan are genetically differentiated from the rest of populations inhabiting the Altiplano ([Collado, Valladares & Méndez, 2013](#)), as well as suggested the existence of some genetic structure within the system. Moreover, the monophyly and support values suggest that two distinct lineages co-occur in the Ascotán saltpan ([Collado, Valladares & Méndez, 2013](#); [Collado, Valladares & Méndez, 2016](#)). It is also important to note that the saltpan comprises twelve isolated or partially isolated springs and both existing molecular studies that analysed *Heleobia* populations from the Ascotán saltpan, only included two springs so the genetic diversity could be subestimated.

The pulmonate freshwater snail *Biomphalaria crequii* ([Courty, 1907](#)) is co-distributed with *Heleobia* in a large part of the Ascotán saltpan. A genetic study carried out in this system showed that three genetic groups were present within *B. crequii* populations, one of them restricted to the north-central area of the saltpan, a second including snails from the south-central section, and a third from the southernmost spring ([Collado & Méndez, 2013](#)). Similarly, another molecular study revealed that the endemic killifish *Orestias ascotanensis* Parenti, 1984 presents high levels of genetic diversity that accounts for four differentiated groups, two located at the north and south ends and other two including several springs confined to the central area of the system being indicative of some gene flow among populations ([Morales, Vila & Poulin, 2011](#); [Cruz-Jofré et al., 2016](#)). It has been suggested that this pattern of genetic structure in these taxa was mainly stimulated by a combination of factors such as fluctuation of water levels (historical and contemporary), different altitude ranges and geographic isolation of populations (see [Morales, Vila & Poulin, 2011](#); [Collado & Méndez, 2013](#); [Cruz-Jofré et al., 2016](#)).

In the present study, we examined the phylogeographic and demographic history of *H. ascotanensis* from the Ascotán saltpan to test whether this species shows population structure and whether this structure is associated with the physiography of the saltpan or it responds to past climatic events. Also, we estimated the historical gene flow among populations inhabiting the different springs of the system. Finally, we analysed morphological data to test for congruent variation between genetic groups. We hypothesized that *H. ascotanensis* would show high genetic structure due to geographical and environmental influences, particularly associated to the last three major humid periods in the region (Sajsi [c. 21–25 kya], Tauca [c. 14–18 kya] and Coipasa [c. 11–13 kya]). Ultimately, we proposed that the microevolutionary differentiation would be similar to the patterns described in co-distributed taxa, but not identical, reflecting an idiosyncratic response to the same historical events.

## STUDY AREA

The Ascotán saltpan is one of the closed basins located in the Chilean Altiplano (Región de Antofagasta) between 21.2–21.4°S and 68.1–68.2°W at 3,760 m a.s.l. The hydrological

system extends around 33 km long by 16 km wide at its maximum range, representing a surface which is mainly covered by evaporitic deposits (243 km<sup>2</sup>), whose main water body (18 km<sup>2</sup>) is generated by a series of springs located mainly in the eastern area of the system (Fig. 1). These springs are fed by underground water coming from the contiguous basin Pastos Grandes Caldera located at 4,600 m altitude (Keller & Soto, 1998; Risacher, Alonso & Salazar, 1999; Risacher, Alonso & Salazar, 2003). On the eastern margin, twelve springs are isolated or partially isolated by vast areas of evaporitic lands that constitute topographic barriers difficult to cross for the aquatic organisms, so connectivity among springs and populations that inhabiting them is reduced. These springs are considered thermal since the water temperature varies among 16–22 ° C, and the high conductivity and salinity indicates the ionic nature of the saltpan (Keller & Soto, 1998; Márquez-García et al., 2009; Risacher, Fritz & Hauser, 2011).

## MATERIAL & METHODS

### Sample collection

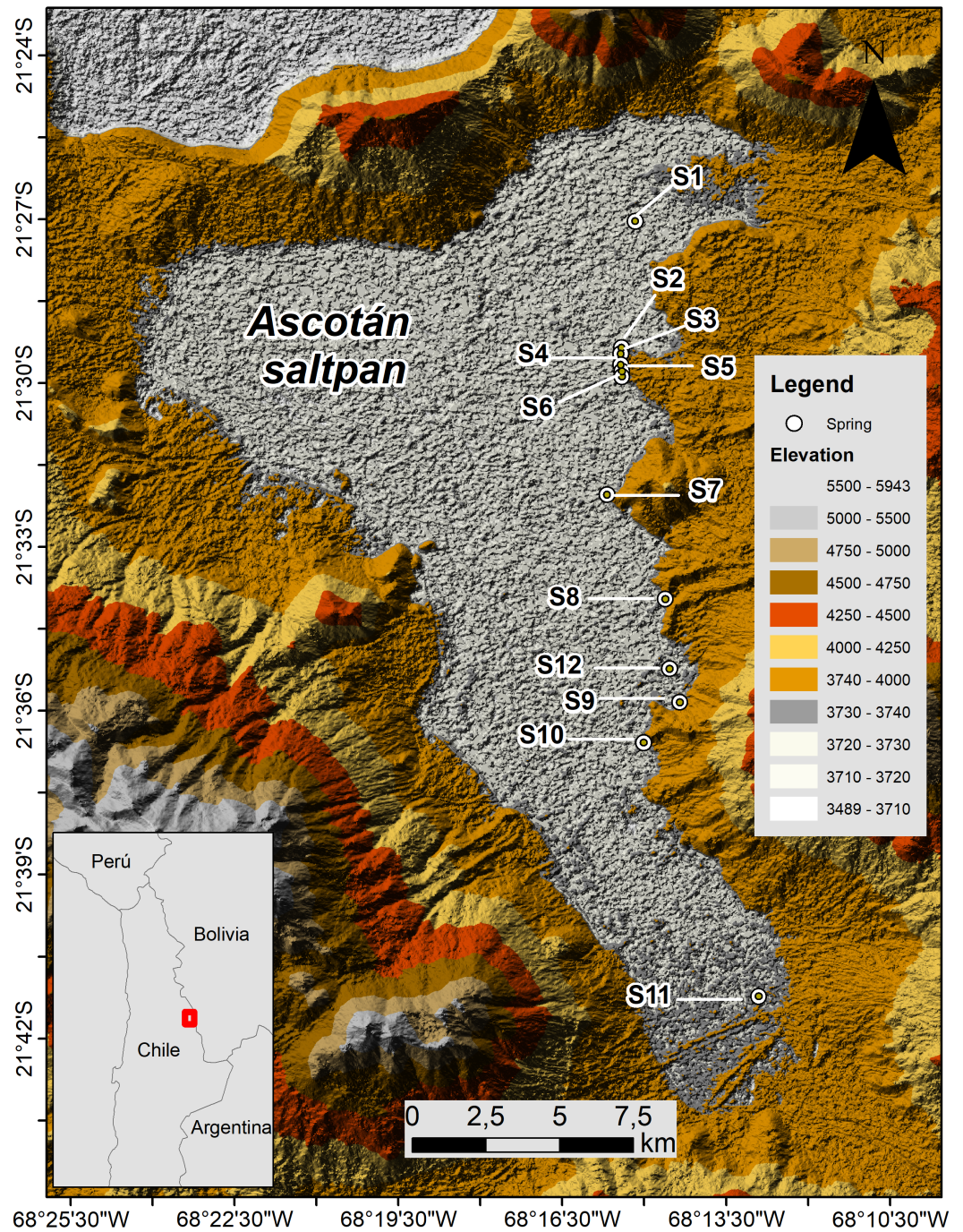
The specimens of *H. ascotanensis* were collected in the water body in two periods due to climatic conditions that did not allow us to sample all springs at once. In April 2012 all springs (except Spring 1) were sampled, and in April 2013 Spring 1 was visited. Also, in April 2013 we collected additional specimens from Spring 11 and Spring 12, these individuals share the same genetic pool (haplotypes) and morphometric features as the specimens collected from the corresponding springs the year before, therefore they were considered as the same population. A minimum of 60 snails were collected by hand or using a small sieve (1 mm mesh) from sediment or macrophytes (usually *Lilaeopsis macloviana* (Gand.) A.W. Hill and *Ruppia filifolia* (Phil.)) in each spring. Sampled specimens were preserved in absolute ethanol for posterior morphological and genetic analyses. Gonzalo A. Collado was authorized to collect *Heleobia* snails in Chile (Resolution No. 3285, Subsecretaría de Pesca y Acuicultura, Ministerio de Economía, Fomento y Turismo, República de Chile).

### Molecular methods

Genomic DNA was extracted from specimens using the cetyl trimethyl ammonium bromide (CTAB) method (Winnepenninckx, Backeljau & De Wachter, 1993). Partial sequences of the cytochrome oxidase subunit I (COI) gene were amplified by the polymerase chain reaction using the primers HCO2198 and LCO1490 (Folmer et al., 1994). We used this mitochondrial gene for its usefulness in discriminating species through genetic barcode (Hebert et al., 2003), wide application in phylogeographic (and even phylogenetic) studies (Wilke, Schultheiß & Albrecht, 2009; Kroll et al., 2012; Wilke et al., 2013), and easy amplification, sequencing and analysis. Both strands of the amplified products were Sanger-sequenced at Macrogen Inc., Seoul, Korea. Forward and reverse strands were corrected for misreads and merged into one sequence file using CODONCODE ALIGNER v3.6.1 (CodonCode Corporation, Dedham, MA, USA).

### Phylogeographic and genetic analyses

We calculated the number of polymorphic sites (S), number of haplotypes (K), haplotypic diversity (H) and nucleotide diversity ( $\pi$ ) in DnaSP (Librado & Rozas, 2009). To visualise



**Figure 1** Map of Ascotán saltpan. The twelve sampled localities (springs, denoted by S) are showed. Lighter colors indicate lower altitude ranges.

Full-size DOI: [10.7717/peerj.5802/fig-1](https://doi.org/10.7717/peerj.5802/fig-1)

the relationships between haplotypes, we constructed a median-joining network ([Bandelt, Forster & Röhl, 1999](#)) using the program PopART ([Leigh & Bryant, 2014](#)) with  $\epsilon = 0$ . Pairwise  $F_{ST}$  values were calculated in ARLEQUIN v3.5 ([Excoffier, Laval & Schneider, 2005](#)) to investigate the degree of genetic differentiation among individuals sorted by springs (significance determined by 10,000 permutations). A Bayesian analysis of population structure accounting for the geographical distribution of *H. ascotanensis* was performed with the GENELAND v4.0.6 package ([Guillot, Mortier & Estoup, 2005](#)) in R v3.4.1 ([R Core Team, 2017](#)). GENELAND incorporates geographical coordinate information for genotyped individuals to estimate the most likely number of genetic groups or clusters (CT) and their spatial boundaries. For all GENELAND analyses we used an uncorrelated allele frequencies model, considering that an isolation-by-distance (IBD) pattern can cause algorithm instabilities in the correlated model. We also set the coordinate uncertainty to 0.0001 to allow for the possibility of different individuals captured at the same point to be assigned to different populations ([Guillot, 2008](#)). Our data set was analysed over 15 independent runs, assuming a  $CT_{min} = 1$  and a  $CT_{max} = 12$  (total number of springs) and using the Dirichlet model. Analyses were run using  $10^8$  MCMC iterations and collecting data at every 100th iteration (see [Guillot, 2008](#)). We tested for hierarchical population structure with an analysis of molecular variance (AMOVA) using ARLEQUIN. To test for local structure at the population level, we placed all specimens from the twelve springs analysed into two different hypothesized population groupings according to the genetic clusters determined by the GENELAND package and the haplogroups defined by the median-joining network. Historical demography was studied by comparing the observed mismatch distributions with those expected under a sudden expansion model ([Rogers & Harpending, 1992](#)) using the sum of the squared deviations (SSD) implemented in ARLEQUIN and 10,000 bootstrap replicates to assess significance. Harpending's Raggedness index (rH) was also calculated to test the unimodality of observed data. ARLEQUIN was also used to calculate the Tajima's D ([Tajima, 1989](#)) and Fu's FS indices ([Fu, 1997](#)), which are sensitive to demographic changes.

To estimate the tendency of population growth through time we constructed a Bayesian skyline plot (BSP) as implemented in BEAST2 ([Bouckaert et al., 2014](#)) on XSEDE via the Cyberinfrastructure for Phylogenetic Research Science (CIPRES) gateway portal ([Miller, Pfeiffer & Schwartz, 2010](#)). This Bayesian approach incorporates uncertainty in genealogy by using MCMC integration under a coalescent model, providing information about effective population sizes ( $N_e$ ) through time ([Drummond et al., 2005](#)). The best-fitting substitution model was estimated in bModelTest ([Bouckaert & Drummond, 2015](#)). The running conditions included  $10^7$  iterations sampling model parameters every 1,000 steps using a relaxed exponential clock model and assuming a substitution rate of 1.7% substitutions per million years for invertebrates ([Wilke, Schultheiß & Albrecht, 2009](#)). The first 25% of steps were discarded to allow for burn-in. To assess the robustness of parameter estimates, two independent chains were run with identical settings. Log files were visualized using TRACER 1.6 ([Rambaut, Suchard & Drummond, 2014](#)).

The PAST3 software ([Hammer, Harper & Ryan, 2001](#)) was used to perform Mantel tests to evaluate the existence of isolation-by-distance (IBD). For this analysis, we determined the significance of correlations between matrices of pairwise distances between populations setting 10,000 randomizations, using the genetic distance matrix ( $F_{ST}$ ) and geographical distances matrix between springs. We estimated the magnitude and direction of historic gene flow among spring populations grouped according to the results of the genetic structure analysis (haplogroups and genetic clusters), using MIGRATE-n v3.2.7 ([Beerli, 2006](#)) on CIPRES. Estimations of past mutation-scaled migration rates ( $M$ ) among the studied populations were performed by grouping the individuals according to haplogroups and genetic clusters (defined by the GENELAND analysis). For the analysis, a Brownian motion model was run to estimate  $M$ , where  $M = m/\mu$  (being  $m$  the historical migration and  $\mu$  the mutation rate). The parameters ( $\Phi$ ) (mutation-scaled population size) and  $M$  followed an exponential distribution (0–100, mean = 50; 0–1,000, mean = 100, respectively), heating was set with four temperatures (1.0, 1.5, 3.0 and 10,000) with a static scheme. We ran 10 short chains with a total of 10,000 genealogy samples and three long chains with 1,000,000 samples, following a burn-in of 1,000 samples; three independent runs were performed.

### Morphometric analyses

We studied shell shape variation of *Heleobia* populations from the Ascotán saltpan using outline analyses based on the elliptic Fourier analysis (EFA). To avoid issues associated with developmental size changes, we exclude juveniles from the analysis. Since we were unable to determine which specimens had reached maturity from shell characters by themselves, we used size as a proxy, analysing specimens in the upper third of the size distribution. Samples used in morphometric analyses ( $N = 322$ ) corresponded to the same samples used in the molecular analysis. Since genetic analyses results were partially discordant, three different datasets were analysed: (i) the first dataset contained individuals organized by its spring of origin; (ii) the second dataset contained individuals sorted by haplogroups and; (iii) the third dataset contained individuals pooled by genetic clusters defined by GENELAND analysis.

Regarding the morphological study, the image of the shell of at least 23 snails per spring ([Table 1](#)) was taken from a ventral view using a camera (Moticam 5) coupled to a stereomicroscope (Motic SMZ-168). The images were subsequently processed in Adobe Photoshop CS6 (Adobe Systems Inc, 2012) to create a black-and-white bitmap image. Elliptic Fourier transformations were made using SHAPE software ([Iwata & Ukai, 2002](#)). With the software ChainCoder, we extracted the contours of the objects and the relevant information was stored as chain codes. We obtained the normalized EFDs from the chain-coded contour with the software Chc2Nef, and the coefficients of the EFDs were calculated by discrete Fourier transformation following [Kuhl & Giardina \(1982\)](#). We estimated that 30 harmonics were sufficient to reconstruct the outlines with high exactitude and resolution these 30 harmonics represent 99.99% of the total Fourier power spectrum ([Crampton, 1995](#)). We performed a principal components analyses on the variance–covariance matrix of the EFD coefficients in the software PrinComp. The

**Table 1** Description of sampling springs of *Heleobia ascotanensis* specimens. Number of individuals per spring and their respective diversity indices based on mtDNA (COI) sequences.

Spring	Geographical coordinates	Altitude (m)	N	Number of polymorphic sites	Number of haplotypes	Haplotype diversity	Nucleotide diversity	Mean number of pairwise differences
1	21°27'02.0"S 68°15'09.8"W	3,733	29	15	8	0.527	0.00362	2.138
2	21°29'21.2"S 68°15'24.8"W	3,732	41	11	5	0.659	0.00837	4.949
3	21°29'27.8"S 68°15'25.6"W	3,734	23	12	5	0.723	0.00725	4.285
4	21°29'39.8"S 68°15'25.6"W	3,730	27	14	6	0.692	0.00901	5.328
5	21°29'47.2"S 68°15'24.5"W	3,729	24	10	4	0.634	0.00880	5.199
6	21°29'52.8"S 68°15'24.4"W	3,732	25	10	4	0.657	0.00866	5.120
7	21°32'02.7"S 68°15'40.7"W	3,731	24	5	3	0.562	0.00145	0.855
8	21°33'57.2"S 68°14'36.8"W	3,738	24	6	4	0.511	0.00143	0.848
9	21°36'11.7"S 68°15'01.4"W	3,735	23	6	3	0.561	0.00161	0.949
10	21°36'35.0"S 68°15'00.7"W	3,738	24	4	5	0.634	0.00138	0.815
11	21°41'13.9"S 68°12'54.0"W	3,740	34	11	13	0.822	0.00284	1.676
12	21°35'13.9"S 68°14'32.3"W	3,735	24	3	4	0.562	0.00107	0.634
Total			322	32	36	0.810	0.00740	4.376

seven effective principal components (number of PC whose proportion is larger than  $1/\text{Number of analysed coefficients}$ ) that represented 94.54% of the total variance were used for the subsequent analyses. Shape differences between individuals from different springs and haplogroups were tested using a non-parametric multivariate analysis of variance (PERMANOVA) using 10,000 permutation in PAST3. Multivariate normality was checked with a multivariate normality test implemented in PAST3 that computes Mardia's multivariate skewness and kurtosis, with tests based on chi-squared (skewness) and normal (kurtosis) distributions. To test if the groups are morphologically distinct and to observe the percentage of correctly classified individuals in each group, linear discriminant analysis (LDA) was performed in PAST3. In addition, group assignment was cross-validated by leave-one-out cross-validation (jackknifing) procedure.

## RESULTS

### Population genetic and demographic analysis

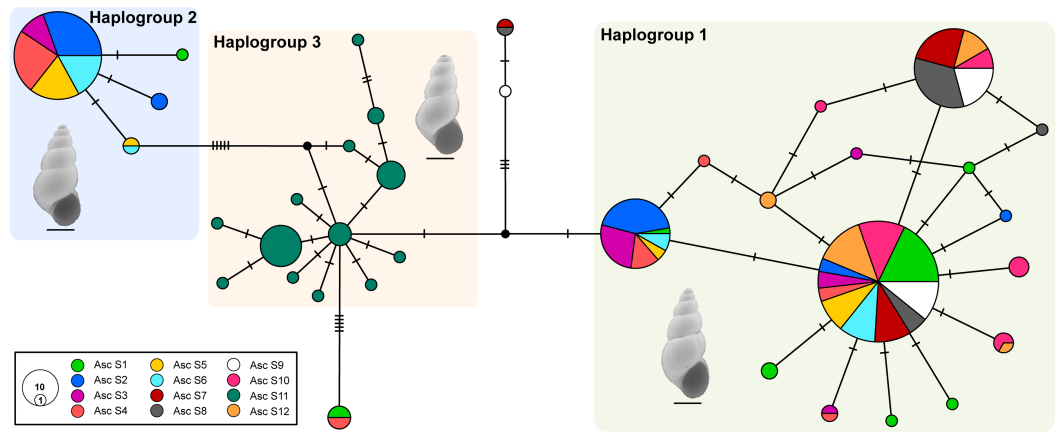
The amplification of the COI gene produced a fragment of 591 nucleotides. The nucleotide composition in the complete dataset was 23.7% A, 17.2% C, 19.3% G and 39.7% T. Of



all specimens examined, the sequence alignment showed a total of 32 polymorphic and 26 parsimony informative sites, defining 36 haplotypes (GenBank accession numbers: [MF447901–MF448222](#)). The best-fitting model of nucleotide substitution, as determined by jModelTest, was the General Time Reversible model plus invariable sites (GTR+I), with  $I = 0.81$ . The mtDNA COI sequences of *Heleobia* showed a pattern of moderate haplotype diversity ( $H = 0.810$ ), but high nucleotide diversity ( $\pi = 0.0074$ ). At the spring level, Spring 11 presented the highest value of haplotype diversity and the highest value of nucleotide diversity was found in Spring 4. Of the remaining springs, the lowest value of haplotype diversity was detected in Spring 8 and the lowest value for nucleotide diversity in Spring 12 ([Table 1](#)).

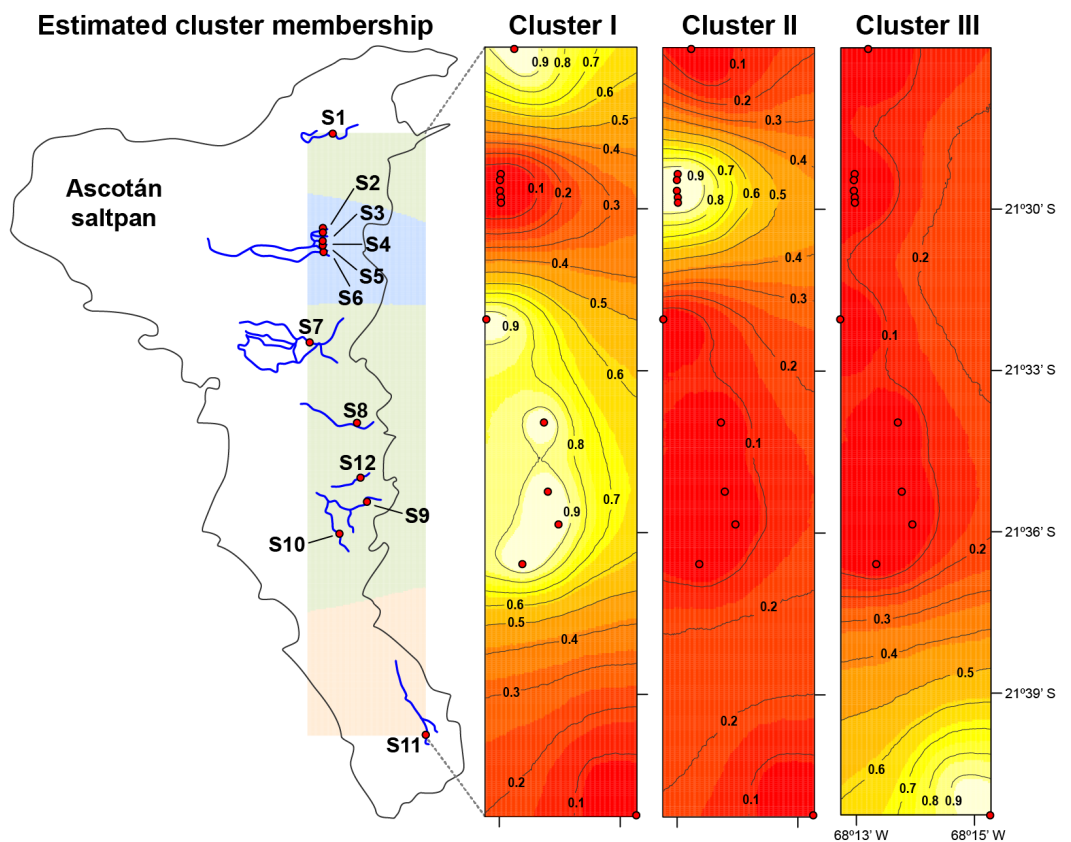
The median-joining network recovered three well-differentiated haplogroups ([Fig. 2](#)). One group (Haplogroup 1), comprising haplotypes found in almost all the springs (except Spring 11), showed a star-like structure centred on the haplotype with the highest frequency (112 samples) spread over eleven springs. The second haplogroup (Haplogroup 2), which recovered sequences from Spring 2 to Spring 6 (and one sequence from Spring 1), showed a star-like structure integrated by four haplotypes. The third group (Haplogroup 3) included all specimens from Spring 11, the southernmost spring of the system. In this haplogroup, a star-like shape of the network was less apparent. The overall differentiation between populations was very high ( $F_{ST} = 0.535$ ), and the closest springs showed lower values of differentiation when compared to remote springs ([Table S1](#)), indicating that almost all genetic variation lies among populations. The population structure estimated through GENELAND analysis generated three genetic clusters ( $CT = 3$ ), called Clusters I, II, and III ([Fig. 3](#)). Each population inferred had a posterior probability of 0.90 belonging to one of the assumed clusters, providing strong support to the GENELAND analysis results. Cluster I comprised all samples from Spring 1, Spring 7 to Spring 10, and Spring 12, while Cluster II was represented by populations of Spring 2 to Spring 6. Cluster III comprised only the population from Spring 11. The AMOVA identified significant values for the genetic variance at the two levels tested (among haplogroups defined by median-joining network and among the genetic clusters determined by GENELAND analysis). Grouping populations by haplogroups explained more of the genetic variation (86.67%,  $P < 0.005$ ; [Table 2](#)) than grouping populations by GENELAND analysis (45.13%,  $P < 0.005$ ; [Table 2](#)), probably indicating that GENELAND analysis grouped genetically distant individuals into the same genetic cluster due to geographical proximity.

Demographic analyses found a consistent signature of recent population expansion in Haplogroup 1, and an old expansion in Haplogroup 3 (Spring 11). Probably due to the extremely low genetic diversity in Haplogroup 2 (Spring 2 to Spring 6), demographic analyses were unable to detect a demographic event in this group. The analysis showed negative and statistically significant values of Fu's  $F_S$  neutrality test at the global level ( $F_S = -9.706$ ,  $P = 0.028$ ) and for all populations grouped by haplogroups ([Table 3](#)), suggesting a demographic range expansion process. In contrast, the Tajima's  $D$ -test did not reveal a significant signal of demographic expansion at the global scale ( $D = -0.3599$ ,  $P = 0.423$ ). Signals of population expansion were detected in two populations grouped by haplogroups (Haplogroup 1 and 2; [Table 3](#)) using Tajima's  $D$ -test. The discrepancy



**Figure 2** Haplotype network. Genealogical relationships of the mtDNA haplotypes found in *H. ascotanensis*. Circle sizes are proportional to haplotype frequencies and colors represent the respective sample localities. Representative snails are depicted along each haplogroup (scale bar: 1 mm).

Full-size [DOI: 10.7717/peerj.5802/fig-2](https://doi.org/10.7717/peerj.5802/fig-2)



**Figure 3** Population structure in *H. ascotanensis*. GENELAND analysis with estimated cluster membership and posterior probability. Lighter shading indicates higher probabilities of population membership.

Full-size [DOI: 10.7717/peerj.5802/fig-3](https://doi.org/10.7717/peerj.5802/fig-3)

**Table 2** Analysis of molecular variance (AMOVA). Results evaluating two classifications (haplogroups and genetic clusters). Results are expressed as the percentage of total variation.

Group level	Source of variation	d.f.	Sum of squares	Variance components	Percentage of variation (%)	Fixation index ( $P < 0.005$ )
Haplogroups	Among Haplogroup 1, 2 and 3	2	536.376	3.537	86.67	$\Phi_{CT} = 0.867$
	Among populations within haplogroups	12	35.164	0.114	2.79	$\Phi_{SC} = 0.209$
	Within populations	300	130.739	0.430	10.54	$\Phi_{ST} = 0.895$
GENELAND clusters	Among Cluster I, II and III	2	236.130	1.214	45.13	$\Phi_{CT} = 0.451$
	Among populations within clusters	7	25.289	0.053	1.99	$\Phi_{SC} = 0.036$
	Within populations	305	440.860	1.422	52.88	$\Phi_{ST} = 0.471$

**Table 3** Demographic parameters. Populations expansion and mismatch distribution parameters for *H. ascotanensis*.

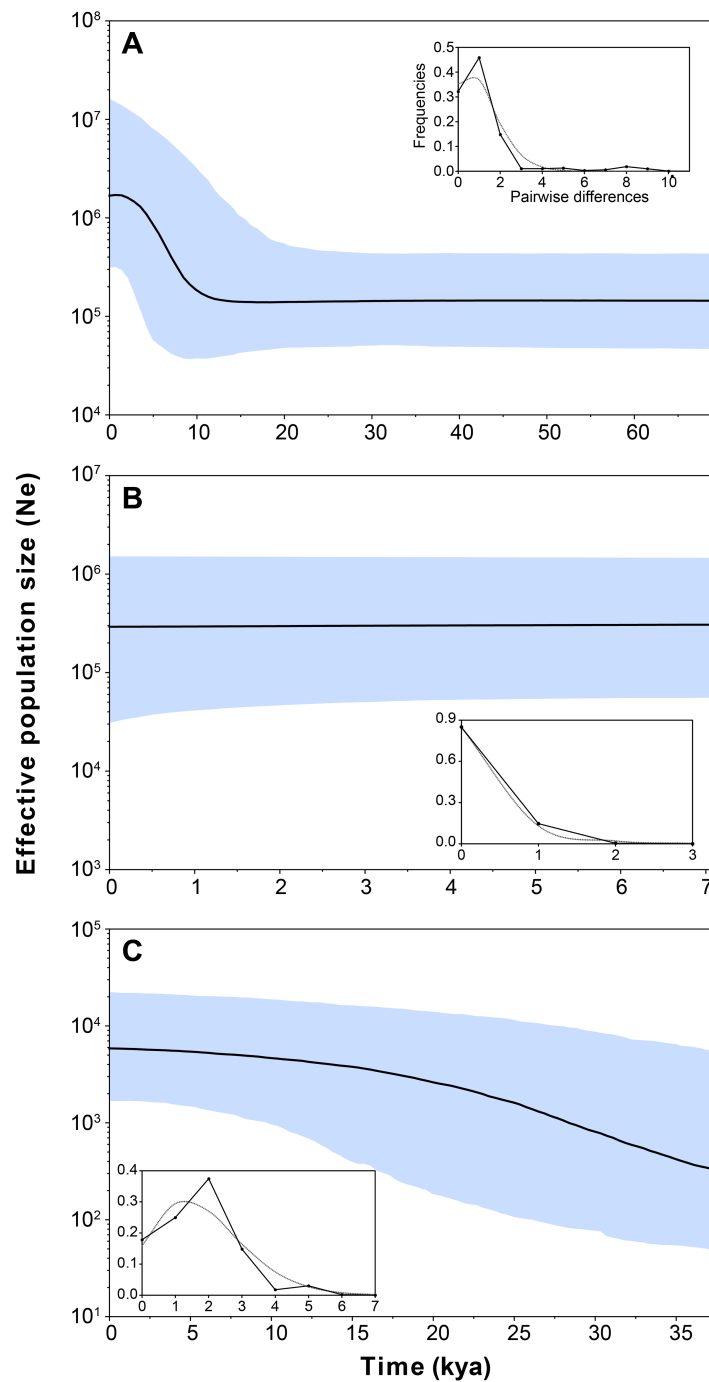
Groups	N	Haplotypes	Tajima's D		Fu's Fs			Mismatch	
			D	P (Ds < Dobs)	F	P (Fs < Fobs)	rH	SSD	$\tau$
Haplogroup 1	225	19	-1.6347	0.026	-11.7923	0.001	0.1347 n.s.	0.01480 n.s.	1.0175
Haplogroup 2	63	4	-1.4814	0.025	-3.4827	0.001	0.5150	0.00052 n.s.	3.0000
Haplogroup 3	34	13	-1.1822	0.133	-7.5634	0.001	0.0898 n.s.	0.01699 n.s.	1.8125
Total	322	36	-0.3599	0.423	-9.7060	0.028	0.0450 n.s.	0.75329 n.s.	1.9433

**Notes.**

rH, Harpending's raggedness index; SSD, sum squared deviations;  $\tau$ , demographic mutation time parameter.

between the *D* and *FS* tests is likely to arise from the decreased statistical power of *D* in detecting significant changes in population sizes (Ramos-Onsins & Rozas, 2002). The mismatch distribution of Haplogroups 1 and Haplogroups 2 suggests a recent history of population expansion, a scenario depicted by a typical unimodal and smooth distribution (Fig. 4). The analysis revealed a non-significant SSD value ( $SSD = 0.753$ ,  $P = 0.123$ ) that did not refute the demographic model of spatial expansion for the species (Table 3). Likewise, the Harpending's raggedness index was not significant ( $rH = 0.045$ ,  $P = 0.354$ ; Table 3). A pattern of demographic population expansion for Haplogroup 1 and Haplogroup 3 was further supported by low and statistically non-significant Harpending's raggedness index and SSD values (Table 3). The demographic scenario for *H. ascotanensis* obtained through the BSPs suggested a slight to moderate demographic expansion that occurred in the recent past in Haplogroup 1 and Haplogroup 3 (but at different times), and probably due to extremely low genetic diversity in Haplogroup 2, none demographic event was detected. The time of expansion for the Haplogroup 3 (Spring 11) was estimated to have started in the Late Pleistocene (*c.* 30 kya) through the Last Glacial Maximum (LGM, *c.* 20 kya) until the Early Holocene (*c.* 10 kya), after this population expansion the effective population size ( $N_e$ ) remained constant (Fig. 4). The BSP analysis for Haplogroup 1 showed a constant  $N_e$  since the Late Pleistocene and a sudden population expansion was estimated to have started in the Holocene (*c.* 10 kya) (Fig. 4).

The Mantel test revealed a significant positive correlation between genetic distances and linear geographical distances among populations ( $r = 0.6233$ ,  $P < 0.005$ ). Estimations of past migration rates (*M*, mutation-scaled effective immigration rate) indicated that



**Figure 4** Bayesian skyline plot and mismatch distributions (inset graphs) depicting the demographic history for *H. ascotanensis* retrieved haplogroups. (A) Haplogroup 1. (B) Haplogroup 2. (C) Haplogroup 3. For the skyline plot, black lines represent median estimates, whereas the shaded area represent the 95% credible interval. For mismatch distributions, black dots represent the observed distribution of pairwise differences and gray line represent the theoretical expected distribution under a population expansion model.

Full-size  DOI: [10.7717/peerj.5802/fig-4](https://doi.org/10.7717/peerj.5802/fig-4)

**Table 4** Historic gene flow (MIGRATE-n). Results of the migration rate analysis: pairwise population comparisons of population sizes (Theta) and mutation-scaled effective immigration rate (M) under two grouping schemes (haplogroups and genetic clusters).

Group level	Population	Theta [ $N_e \mu$ ]	M (m/ $\mu$ ) [+ = receiving population]		
			1, +	2, +	3, +
Haplogroups	Haplogroup 1	0.006604	–	53.2	63.1
	Haplogroup 2	0.001082	294.6	–	235.0
	Haplogroup 3	0.009516	93.0	102.4	–
Genetic clusters	Cluster I	0.005144	–	408.6	71.9
	Cluster II	0.003550	533.6	–	101.6
	Cluster III	0.008096	86.6	80.1	–

Haplogroup 2 showed higher immigration rates, followed by Haplogroup 3, whereas Haplogroup 1 showed lower rates (Table 4). Immigration rates from Haplogroup 1 and Haplogroup 3 to Haplogroup 2 were 294.6 and 235.0, respectively. When grouping populations using genetic clusters defined by GENELAND analysis, reciprocal migration rates among clusters I and II (northern populations) were higher than rates with Cluster III (Table 4). In both analysis, closer populations showed higher migration rates than distant populations.

### Morphometric analysis

The first PC (78.64%) was mainly related with shell width while PC2 (5.01%) corresponded to changes in the whorls suture depth (Fig. S1). Only in the first and third datasets (samples pooled by springs and genetics clusters, respectively) results of PERMANOVA tests using the first seven PCs revealed significant differences in the Fourier coefficients between groups analysed (Table 5), although principal components analysis of the shell morphology showed that units analysed clearly overlap in the morphospace (Fig. S2). We tested for multivariate normality and no significant deviation was found. Multivariate discriminant analyses based on shell morphologies across every dataset only detected high levels of correct re-assignment in individuals from Spring 11 (Table 5; Table S2). Under the three grouping schemes: samples sorted by springs, haplogroups and genetic clusters, individuals from Spring 11 were identified correctly 64.71%, 70.58% and 67.65% (jackknifed) of the time, respectively.

## DISCUSSION

The results of the current study revealed that *H. ascotanensis* has a high phylogeographic structure, even when its distribution encompass only a few kilometres. Using diverse analysis to examine spatial and temporal patterns of mtDNA sequence variation and morphological differentiation, a complex pattern of historical and demographic events was uncovered in this endemic snail. Three main findings were revealed from the present study: (i) a pronounced mtDNA sequence differentiation at small spatial scale; (ii) complex historical and demographic influences on sequence divergence and diversity within and

**Table 5** Shell outlines differences in individuals from the Ascotán saltpan. Results of a non-parametric multivariate analysis of variance (PERMANOVA) comparing three datasets (samples sorted by springs, haplogroups and genetic clusters). Also, a classification table obtained from LDA for each dataset is presented. Mean percentage of correctly classified individuals and the highest percentage obtained is showed (complete table in Table S2).

Dataset	Groups number	PERMANOVA	Linear discriminant analysis		
			Mean % C.C.	Mean % C.C. (jackknifed)	Highest % C.C.
Springs	12	$F = 10.09; p = 0.0001$	37.37	31.84	64.71 (Spring 11)
Haplogroups	3	$F = 1.253; p = 0.2733$	55.16	52.81	70.58 (Haplogroup 3)
Genetic Clusters	3	$F = 2.718; p = 0.0497$	55.49	53.08	67.65 (Cluster 3)

among springs and; (iii) an incipient morphological differentiation coupled to genetic divergence.

The haplotype network and genetic clusters defined by GENELAND analysis indicate that there are three genetic entities inhabiting the Ascotán saltpan, although the composition of the groups was partially discordant. Both analyses defined specimens from Spring 11 as a different population (Haplogroup 3 and Cluster III), a result congruent with the physiographic arrangement of the saltpan since Spring 11 is the southernmost spring in the system and currently is completely isolated. However, there was an inconsistency in the northern springs' classification, the haplotype network defined a haplogroup widely distributed in the saltpan (Haplogroup 1), covering all springs except Spring 11. Spatially nested in Haplogroup 1 was defined Haplogroup 2, which mainly grouped samples from Spring 2 to Spring 6. According to the haplotype network, haplogroups 1 and 2 were the most genetically distant groups (at least nine mutational steps). In contrast, GENELAND analysis defined Cluster I as the individuals from Spring 1, Spring 7 to Spring 10, and Spring 12; and Cluster II contained individuals from Spring 2 to Spring 6. The Cluster II probably reflects an influence of geographical proximity among springs in the result, since the analysis classified the most genetic distant individuals into the same population. This was also evidenced by the AMOVAs analyses, which showed that the genetic variance was better explained sorting samples by haplogroups than genetic clusters.

Whilst some springs contained highly similar genetic snails, Spring 2 to Spring 6 were constituted by individuals with very divergent sequences. This pattern suggests that in these springs exist two highly genetically structured groups that probably have different evolutionary histories. We propose two main hypotheses to explain this pattern. The first and most probable hypothesis suggests that occurred an allopatric divergence followed by a range expansion leading to secondary contact among the two genetic groups detected. The second hypothesis proposes a local adaptation accompanied by genetic divergence (i.e., an *in situ* differentiation); but considering that the saltpan was a continuous hydrological system in the past, and that afterwards the passing of humid periods to a dry season the system was divided into isolated or partially isolated springs suggest that this is a less feasible scenario. The range expansion considered in the first hypothesis may be due to dispersal mediated by high rainfalls seasons during SASM (Morales *et al.*, 2012) that could connect springs close enough to allow genetic flow between populations (as proposed

by [Cruz-Jofré et al., 2016](#)), subterranean hydrological connections undetected or passive dispersal mediated by birds as has been reported in similar freshwater snails from desert hydrological systems in Australia ([Van Leeuwen et al., 2012a](#); [Van Leeuwen et al., 2012b](#); [Van Leeuwen et al., 2013](#)). The results suggest that genetic differentiation is not only a response to a physiographic imposition, but also an active reaction to climatic changes, and additionally, modulated by biological properties (such as dispersal capacities) of the organism. This pattern has been described previously in diverse freshwater taxa confined to hydrological systems located in arid regions ([Moline et al., 2004](#); [Wilmer et al., 2008](#); [Murphy, Guzik & Wilmer, 2010](#); [Murphy et al., 2015](#)).

Our demographic analyses revealed that *H. ascotanensis* populations present different histories. Population inhabiting the southernmost spring (Spring 11, Haplogroup 3) showed a constant population expansion and growth since *c.* 0.30 kya until *c.* 0.10 kya, whereas northern populations show signals of recent demographic expansion (*c.* 10 kya, Haplogroup 1) and recent demographic stability (Haplogroup 2). Although the exact mechanisms that account for this are unclear, the constant population expansion denoted by BSP analyses in Haplogroup 3 could be related with the last three major humid periods reported in the Altiplano associated with paleolakes Sajsi (*c.* 21–25 kya), Tauca (*c.* 14–18 kya) and Coipasa (*c.* 11–13 kya) ([Blard et al., 2009](#); [Blard et al., 2011](#); [Placzek, Quade & Patchett, 2011](#); [Placzek, Quade & Patchett, 2013](#)). Since Spring 11 is located at a greater altitude and distant from other springs, probably it was the first spring to become disconnected in every arid period, therefore its population could possess an independent demographic and evolutionary history, not shared with the other populations of the saltpan. Studies in co-distributed taxa (snails and fishes) suggest that populations from Spring 11 are genetically divergent to the remaining springs ([Morales, Vila & Poulin, 2011](#); [Collado & Méndez, 2013](#); [Cruz-Jofré et al., 2016](#)). Under the same argument, haplogroups 1 and 2 probably had a history of their own (this is denoted by the large amount of genetic differences accumulated), however, they are currently geographically nested, probably due to dispersal mediated by flooding occurred in recent climatic events. Even though they share a common habitat, the demographic history of each of these populations is discordant. Haplogroup 2 has a recent demographic stability with extremely low genetic diversity. In contrast, Haplogroup 1 shows signals of a recent population expansion that is not coincident with any major climatic event reported in the Altiplano, so it could be associated with contemporary changes in the rainfall of the region ([Morales et al., 2012](#); [Placzek, Quade & Patchett, 2013](#)) or an increase of the genetic diversity as a result of a range expansion that could be associated with the secondary contact proposed above.

Estimates of the population expansion in Haplogroup 3 (Spring 11) corresponded approximately to the transit through three major humid periods (associated with paleolakes Sajsi, Tauca and Coipasa), suggesting that these snails persisted isolated in the saltpan during the LGM, since they have unique haplotypes not present in other springs. The results indicate that the transition from humid to arid periods had apparently little effect on the population size in Haplogroup 3, which is an important finding considering that these strictly aquatic organisms need to cope with an increase in salinity and dehydration, which are *conditio sine qua non* to the saltpan formation. Probably the dynamic change

in water availability impose a pressure that promote the development of strategies to respond to a variable environment, and the contrasting demographic histories and genetic diversification suggest that the strategies could be different among the populations of *H. ascotanensis*; similar environmental changes have caused comparable evolutionary responses in analogous hydrological-desert systems (Pfenninger & Posada, 2002; Mossop et al., 2015; Murphy et al., 2012; Murphy et al., 2015).

Morphometrics analyses recovered only one of the three populations defined by the genetic analyses. Samples from Spring 11 were correctly assigned to their corresponding group roughly 70% of the time, a high value considering that these snails present a cryptic morphology (Collado, Valladares & Méndez, 2013; Collado, Valladares & Méndez, 2016). This evidence indicates that snails from Spring 11 have a particular morphology. In other snails, morphological differentiation has been related to multiples causes including ecological and environmental factors (Dillon, 1984; Goodfriend, 1986; Chiu et al., 2002; Guerra-Varela et al., 2007), parasitism (Alda et al., 2010), growth rate (Kemp & Bertness, 1984), predator induced response (Brönmark, Lakowitz & Hollander, 2011) and intraspecific morphological variation associated with geographical isolation (Sánchez et al., 2011; Sepúlveda & Ibáñez, 2012). In *H. ascotanensis*, the morphological differentiation showed by Spring 11 could be induced by genetic differentiation, possibly caused by geographical isolation and adaptive responses to dynamic environmental conditions, as has been reported in the gastropod *Potamopyrgus antipodarum* (Gray, 1843) (Kistner & Dybdahl, 2013). This argument is supported by MIGRATE analyses that indicate that Spring 11 presented low historical genetic flow regarding other springs and the Mantel test suggested an isolation-by-distance pattern.

Finally, our results lend strong support to the hypothesis that species (and populations) respond differently to the same environmental and historical circumstances. Ecological conditions and interactions, and environmental impositions (such as aridity) influence the genetic pool or structure in different taxa, but biological properties (e.g., dispersal capacities, life history traits, inter-specific interactions, etc.) may led to large differences in phylogeographic history (Zickovich & Bohonak, 2007; Murphy, Guzik & Wilmer, 2010; Sproul et al., 2014; Murphy et al., 2015). On the one hand, our study on *H. ascotanensis* compared to other taxa co-distributed in the Ascotán saltpan indicates that species show a deep genetic structure, but the times of divergence and the organization of population is slightly different (Morales, Vila & Poulin, 2011; Collado & Méndez, 2013; Cruz-Jofré et al., 2016). Considering our results and based on previous studies, we can conclude that *Heleobia ascotanensis*, *B. crequii* (gastropod) and *O. ascotanensis* (killifish) present a common pattern in which Spring 11 is genetically divergent from other springs, a result probably related with the geographical isolation of this system. On the other hand, genetic structure in northern springs are idiosyncratic of each taxon, implying that each specie (or population) respond independently to historical changes and that the particular habitat itself is not a sufficient predictor of the genetic differentiation.



## CONCLUSION

In this study, we provide the first phylogeographical investigation on a species of the genus *Heleobia* from the Southern Altiplano. We present evidence of a high genetic structure in *H. ascotanensis*. Molecular analyses detected three main haplogroups well differentiated and related with the saltpan physiography. Gene flow and demographic analyses showed different connectivity and histories among populations, indicating that each haplogroup responded independently to the fragmentation of the aquatic system occurred during humid-arid transitions that characterized the Plio-Pleistocene period. Morphometric analyses detected a subtle differentiation, and this variation is concomitant with genetic divergence found in Spring 11, the southernmost spring. The genetic structure found in *H. ascotanensis* is similar to the pattern detected in co-distributed taxa; however, temporal and spatial differences among species populations indicate that each taxon (or population) responded differently to the same historic and contemporary climatic changes. Further work in *H. ascotanensis* should focus on increasing analysed loci (besides markers with a uniparental mechanism of inheritance as COI), a strategy that would be helpful for evaluating in detail the mode and tempo of the genetic differentiation detected in this species.

## ACKNOWLEDGEMENTS

We would like to thank Franco Cruz for his assistance in sampling of specimens, Carolina Gallardo for her help with cartography and Caren Vega-Retter for her help with MIGRATE software. MAV thanks Daniela Valladares for her help with the original version of the manuscript. The authors are thankful to reviewers of the paper for the valuable comments which assisted in improving the manuscript.

## ADDITIONAL INFORMATION AND DECLARATIONS

### Funding

This work was supported by the Comisión Nacional de Investigación Científica y Tecnológica (FONDECYT 11130697 to Gonzalo A. Collado and FONDECYT 1140540 to Marco A Méndez); Proyecto de Cooperación Internacional ECOS-CONICYT C15B02 (granted to Marco A. Méndez and Nicolas Puillandre); CONICYT-FONDEQUIP Program (No. EQM-140088) to Gonzalo A. Collado; and Beca Nacional de Doctorado (CONICYT-PCHA/Doctorado Nacional/2014-21140226 to Moisés A. Valladares). The funders had no role in study design, data collection and analysis, decision to publish, or preparation of the manuscript.

### Grant Disclosures

The following grant information was disclosed by the authors:

Comisión Nacional de Investigación Científica y Tecnológica: FONDECYT 11130697, FONDECYT 1140540.

Proyecto de Cooperación Internacional ECOS-CONICYT: C15B02.

CONICYT-FONDEQUIP Program: EQM-140088.

Beca Nacional de Doctorado: CONICYT-PCHA/Doctorado Nacional/2014-21140226.

### Competing Interests

The authors declare there are no competing interests.

### Author Contributions

- Moisés A. Valladares conceived and designed the experiments, performed the experiments, analyzed the data, prepared figures and/or tables, authored or reviewed drafts of the paper, approved the final draft.
- Marco A. Méndez and Gonzalo A. Collado conceived and designed the experiments, contributed reagents/materials/analysis tools, authored or reviewed drafts of the paper, approved the final draft.

### Field Study Permissions

The following information was supplied relating to field study approvals (i.e., approving body and any reference numbers):

Field collections were approved by the Subsecretaría de Pesca y Acuicultura, Ministerio de Economía, Fomento y Turismo, República de Chile (Resolution No. 3285).

### DNA Deposition

The following information was supplied regarding the deposition of DNA sequences:

GenBank accession numbers [MF447901](#) to [MF448222](#).

### Data Availability

The following information was supplied regarding data availability:

The genetic alignment is available in the [Supplemental Files](#).

### Supplemental Information

Supplemental information for this article can be found online at <http://dx.doi.org/10.7717/peerj.5802#supplemental-information>.

## REFERENCES

- Alda P, Bonel N, Cazzaniga NJ, Martorelli SR. 2010.** Effects of parasitism and environment on shell size of the South American intertidal mud snail *Heleobia australis* (Gastropoda). *Estuarine, Coastal and Shelf Science* **87**:305–310  
[DOI 10.1016/j.ecss.2010.01.012](https://doi.org/10.1016/j.ecss.2010.01.012).
- Bandelt HJ, Forster P, Röhl A. 1999.** Median-joining networks for inferring intraspecific phylogenies. *Molecular Biology and Evolution* **16**:37–48  
[DOI 10.1093/oxfordjournals.molbev.a026036](https://doi.org/10.1093/oxfordjournals.molbev.a026036).
- Beerli P. 2006.** Comparison of Bayesian and maximum-likelihood inference of population genetic parameters. *Bioinformatics* **22**:341–345  
[DOI 10.1093/bioinformatics/bti803](https://doi.org/10.1093/bioinformatics/bti803).

- Biese W. 1944.** Revisión de los moluscos terrestres de agua dulce provistos de concha de Chile. Parte I. *Boletín del Museo de Historia Natural* **22**:169–190.
- Biese W. 1947.** Revisión de los moluscos terrestres de agua dulce provistos de concha de Chile. Parte II. *Boletín del Museo de Historia Natural* **22**:63–77.
- Blard PH, Sylvestre F, Tripathi AK, Claude C, Causse C, Coudrain A, Condom T, Seidel JL, Vimeux F, Moreau C, Dumoulin JP, Lavé J. 2011.** Lake highstands on the Altiplano (Tropical Andes) contemporaneous with Heinrich 1 and the Younger Dryas: new insights from  $^{14}\text{C}$ , U–Th dating and  $\delta^{18}\text{O}$  of carbonates. *Quaternary Science Reviews* **30**:3973–3989 DOI [10.1016/j.quascirev.2011.11.001](https://doi.org/10.1016/j.quascirev.2011.11.001).
- Blard P-H, Lavé J, Farley KA, Fornari M, Jiménez N, Ramirez V. 2009.** Late local glacial maximum in the Central Altiplano triggered by cold and locally-wet conditions during the paleolake Tauca episode (17–15ka, Heinrich 1). *Quaternary Science Reviews* **28**:3414–3427 DOI [10.1016/j.quascirev.2009.09.025](https://doi.org/10.1016/j.quascirev.2009.09.025).
- Bouckaert R, Drummond A. 2015.** bModelTest: Bayesian phylogenetic site model averaging and model comparison. *bioRxiv* 20792.
- Bouckaert R, Heled J, Kühnert D, Vaughan T, Wu CH, Xie D, Suchard MA, Rambaut A, Drummond AJ. 2014.** BEAST 2: a software platform for bayesian evolutionary analysis. *PLOS Computational Biology* **10**:1–6.
- Brönmark C, Lakowitz T, Hollander J. 2011.** Predator-induced morphological plasticity across local populations of a freshwater snail. *PLOS ONE* **6**:e21773 DOI [10.1371/journal.pone.0021773](https://doi.org/10.1371/journal.pone.0021773).
- Carvalho LMV, Cavalcanti IFA. 2016.** The South American Monsoon System (SAMS). In: Carvalho LM, Jones C, eds. *The Monsoons and climate change. Observations and modeling*. Cham: Springer International Publishing, 121–148.
- Carvalho LMV, Jones C, Silva AE, Liebmann B, Silva-Dias PL. 2011.** The South American monsoon system and the 1970s climate transition. *International Journal of Climatology* **31**(8):1248–1256 DOI [10.1002/joc.2147](https://doi.org/10.1002/joc.2147).
- Cazzaniga NJ. 2011.** *Heleobia* Stimpson, 1865: taxonomía. In: Cazzaniga NJ, ed. *El género Heleobia (Caenogastropoda: Cochliopidae) en América del Sur*. Santiago: Amici Molluscarum (número especial), 12–17.
- Chiu Y-W, Chen H-C, Lee S-C, Chen CA. 2002.** Morphometric Analysis of Shell and Operculum Variations in the Viviparid Snail, *Cipangopaludina chinensis* (Mollusca: Gastropoda), in Taiwan. *Zoological Studies* **41**:321–331.
- Collado GA. 2015.** A new freshwater snail (Caenogastropoda: Cochliopidae) from the Atacama Desert, northern Chile. *Zootaxa* **3925**:445–449 DOI [10.11646/zootaxa.3925.3.9](https://doi.org/10.11646/zootaxa.3925.3.9).
- Collado GA, Méndez MA. 2012a.** Phylogenetic relationships and taxonomy of Altiplano populations of *Biomphalaria* (Gastropoda: Planorbidae): inference from a multilocus approach. *Zoological Journal of the Linnean Society* **165**:795–808 DOI [10.1111/j.1096-3642.2012.00829.x](https://doi.org/10.1111/j.1096-3642.2012.00829.x).
- Collado GA, Méndez MA. 2012b.** Los taxa nominales de moluscos descritos por Courty del Salar de Ascotán, Altiplano chileno. *Revista chilena de historia natural* **85**:233–235 DOI [10.4067/S0716-078X2012000200010](https://doi.org/10.4067/S0716-078X2012000200010).

- Collado GA, Méndez MA. 2013.** Microgeographic differentiation among closely related species of *Biomphalaria* (Gastropoda: Planorbidae) from the Andean Altiplano. *Zoological Journal of the Linnean Society* **169**:640–652 DOI [10.1111/zoj.12073](https://doi.org/10.1111/zoj.12073).
- Collado GA, Valladares MA, Méndez MA. 2013.** Hidden diversity in spring snails from the Andean Altiplano, the second highest plateau on Earth, and the Atacama Desert, the driest place in the world. *Zoological Studies* **52**:Article 50 DOI [10.1186/1810-522X-52-50](https://doi.org/10.1186/1810-522X-52-50).
- Collado GA, Valladares MA, Méndez MA. 2016.** Unravelling cryptic species of freshwater snails (Caenogastropoda, Truncatelloidea) in the Loa River basin, Atacama Desert. *Systematics and Biodiversity* **14**:417–429 DOI [10.1080/14772000.2016.1153526](https://doi.org/10.1080/14772000.2016.1153526).
- Collado GA, Vila I, Méndez MA. 2011.** Monophyly, candidate species and vicariance in *Biomphalaria* snails (Mollusca: Planorbidae) from the Southern Andean Altiplano. *Zoologica Scripta* **40**:613–622 DOI [10.1111/j.1463-6409.2011.00491.x](https://doi.org/10.1111/j.1463-6409.2011.00491.x).
- Courty G. 1907.** Explorations géologiques dans l’Amérique du Sud. In: *Mission Scientifique de G de Crèqui Montefort et E Sénéchal de la Grange*. 1st edition. Paris: Impremière Nationale.
- Crampton JS. 1995.** Elliptic Fourier shape analysis of fossil bivalves: some practical considerations. *Lethaia* **28**:179–186 DOI [10.1111/j.1502-3931.1995.tb01611.x](https://doi.org/10.1111/j.1502-3931.1995.tb01611.x).
- Cruz-Jofré F, Morales P, Vila I, Esquer-Garrigos Y, Hugueny B, Gaubert P, Poulin E, Méndez MA. 2016.** Geographical isolation and genetic differentiation: the case of *Orestias ascotanensis* (Teleostei: Cyprinodontidae), an Andean killifish inhabiting a highland salt pan. *Biological Journal of the Linnean Society* **117**:747–759 DOI [10.1111/bij.12704](https://doi.org/10.1111/bij.12704).
- Dejoux C, Iltis A. 1992.** *El lago Titicaca: Síntesis del conocimiento limnológico actual*. La Paz: ORSTOM—HISBOL.
- Dillon RT. 1984.** Geographic distance, environmental difference, and divergence between isolated populations. *Systematic Biology* **33**:69–82 DOI [10.1093/sysbio/33.1.69](https://doi.org/10.1093/sysbio/33.1.69).
- Drummond AJ, Rambaut A, Shapiro B, Pybus OG. 2005.** Bayesian coalescent inference of past population dynamics from molecular sequences. *Molecular Biology and Evolution* **22**:1185–1192 DOI [10.1093/molbev/msi103](https://doi.org/10.1093/molbev/msi103).
- Excoffier L, Laval G, Schneider S. 2005.** Arlequin (version 3.0): an integrated software package for population genetics data analysis. *Evolutionary Bioinformatics Online* **1**:47–50.
- Folmer O, Black M, Hoeh W, Lutz R, Vrijenhoek R. 1994.** DNA primers for amplification of mitochondrial cytochrome c oxidase subunit I from diverse metazoan invertebrates. *Molecular Marine Biology and Biotechnology* **3**:294–299.
- Fornari M, Risacher F, Féraud G. 2001.** Dating of paleolakes in the central Altiplano of Bolivia. *Palaeogeography, Palaeoclimatology, Palaeoecology* **172**:269–282 DOI [10.1016/S0031-0182\(01\)00301-7](https://doi.org/10.1016/S0031-0182(01)00301-7).
- Fu YX. 1997.** Statistical tests of neutrality of mutations against population growth, hitchhiking and background selection. *Genetics* **147**:915–925.

- Garreaud RD, Aceituno P. 2001.** Interannual rainfall variability over the South American Altiplano. *Journal of Climate* **14**(12):2779–2789  
[DOI 10.1175/1520-0442\(2001\)014<2779:IRVOTS>2.0.CO;2](https://doi.org/10.1175/1520-0442(2001)014<2779:IRVOTS>2.0.CO;2).
- Garreaud RD, Vuille M, Compagnucci R, Marengo J. 2009.** Present-day South American climate. *Palaeogeography, Palaeoclimatology, Palaeoecology* **281**:180–195  
[DOI 10.1016/j.palaeo.2007.10.032](https://doi.org/10.1016/j.palaeo.2007.10.032).
- Goodfriend GA. 1986.** Variation in land-snail shell form and size and its causes: a review. *Systematic Biology* **35**:204–223 [DOI 10.1093/sysbio/35.2.204](https://doi.org/10.1093/sysbio/35.2.204).
- Guerra-Varela J, Colson I, Backeljau T, Breugelmanns K, Hughes RN, Rolán-Alvarez E. 2007.** The evolutionary mechanism maintaining shell shape and molecular differentiation between two ecotypes of the dogwhelk *Nucella lapillus*. *Evolutionary Ecology* **23**:261–280 [DOI 10.1007/s10682-007-9221-5](https://doi.org/10.1007/s10682-007-9221-5).
- Guerrero-Jiménez CJ, Peña F, Morales P, Méndez MA, Sallaberry M, Vila I, Poulin E. 2017.** Pattern of genetic differentiation of an incipient speciation process: the case of the high Andean killifish *Orestias*. *PLOS ONE* **12**:e0170380  
[DOI 10.1371/journal.pone.0170380](https://doi.org/10.1371/journal.pone.0170380).
- Guillot G. 2008.** Inference of structure in subdivided populations at low levels of genetic differentiation—the correlated allele frequencies model revisited. *Bioinformatics* **24**:2222–2228 [DOI 10.1093/bioinformatics/btn419](https://doi.org/10.1093/bioinformatics/btn419).
- Guillot G, Mortier F, Estoup A. 2005.** Geneland: a computer package for landscape genetics. *Molecular Ecology Notes* **5**:712–715 [DOI 10.1111/j.1471-8286.2005.01031.x](https://doi.org/10.1111/j.1471-8286.2005.01031.x).
- Haas F. 1955.** XVII. Mollusca: Gastropoda. *Transactions of the Linnean Society of London: 3rd Series* **1**:275–308 [DOI 10.1111/j.1096-3642.1955.tb00017.x](https://doi.org/10.1111/j.1096-3642.1955.tb00017.x).
- Hammer Ø, Harper D, Ryan P. 2001.** PAST: paleontological statistics software package for education and data analysis. *Palaeontology Electronica* **4**(1):1–9.
- Hebert PDN, Cywinska A, Ball SL, DeWaard JR. 2003.** Biological identifications through DNA barcodes. *Proceedings of the Royal Society B: Biological Sciences* **270**:313–321  
[DOI 10.1098/rspb.2002.2218](https://doi.org/10.1098/rspb.2002.2218).
- Hubendick B. 1955.** XVIII. The anatomy of Gastropoda\*. *Transactions of the Linnean Society of London: 3rd Series* **1**:309–327 [DOI 10.1111/j.1096-3642.1955.tb00018.x](https://doi.org/10.1111/j.1096-3642.1955.tb00018.x).
- Iwata H, Ukai Y. 2002.** SHAPE: a computer program package for quantitative evaluation of biological shapes based on elliptic Fourier descriptors. *The Journal of Heredity* **93**:384–385 [DOI 10.1093/jhered/93.5.384](https://doi.org/10.1093/jhered/93.5.384).
- Johnson SG. 2005.** Age, phylogeography and population structure of the microendemic banded spring snail, *Mexipyrghus churinceanus*. *Molecular Ecology* **14**:2299–2311  
[DOI 10.1111/j.1365-294x.2005.02580.x](https://doi.org/10.1111/j.1365-294x.2005.02580.x).
- Keller B, Soto D. 1998.** Hydrogeologic influences on the preservation of *Orestias ascotanensis* (Teleostei: Cyprinodontidae), in Salar de Ascotan, northern Chile. *Revista Chilena de Historia Natural* **71**:147–156.
- Kemp P, Bertness MD. 1984.** Snail shape and growth rates: evidence for plastic shell allometry in *Littorina littorea*. *Proceedings of the National Academy of Sciences of the United States of America* **81**:811–813 [DOI 10.1073/pnas.81.3.811](https://doi.org/10.1073/pnas.81.3.811).

- Kistner EJ, Dybdahl MF. 2013.** Adaptive responses and invasion: the role of plasticity and evolution in snail shell morphology. *Ecology and Evolution* 3:424–436 DOI 10.1002/ece3.471.
- Kroll O, Hershler R, Albrecht C, Terrazas EM, Apaza R, Fuentealba C, Wolff C, Wilke T. 2012.** The endemic gastropod fauna of Lake Titicaca: correlation between molecular evolution and hydrographic history. *Ecology and Evolution* 2:1517–1530 DOI 10.1002/ece3.280.
- Kuhl FP, Giardina CR. 1982.** Elliptic Fourier features of a closed contour. *Computer Graphics and Image Processing* 18:236–258 DOI 10.1016/0146-664X(82)90034-X.
- Lavenu A, Fornari M, Sebrier M. 1984.** Existence de deux nouveaux épisodes lacustres quaternaires dans l'Altiplano Péruvo-Bolivien. *Cahiers O.R.S.T.O.M., Série Géologie* XIV:103–114.
- Leigh JW, Bryant D. 2014.** PopART: full-feature software for population genetics. Available at <http://popart.otago.ac.nz>.
- Librado P, Rozas J. 2009.** DnaSP v5: a software for comprehensive analysis of DNA polymorphism data. *Bioinformatics* 25:1451–1452 DOI 10.1093/bioinformatics/btp187.
- Marengo JA, Liebmann B, Grimm AM, Misra V, Silva-Dias PL, Cavalcanti IFA, Carvalho LMV, Berbery EH, Ambrizzi T, Vera CS, Saulo AC, Nogues-Paegle J, Zipser E, Seth A, Alves LM. 2012.** Recent developments on the South American monsoon system. *International Journal of Climatology* 32:1–21 DOI 10.1002/joc.2254.
- Márquez-García M, Vila I, Hinojosa LF, Méndez MA, Carvajal JL, Sabando MC. 2009.** Distribution and seasonal fluctuations in the aquatic biodiversity of the southern Altiplano. *Limnologica—Ecology and Management of Inland Waters* 39:314–318 DOI 10.1016/j.limno.2009.06.007.
- Miller MA, Pfeiffer W, Schwartz T. 2010.** Creating the CIPRES science gateway for inference of large phylogenetic trees. *Proceedings of the Gateway Computing Environments Workshop (GCE)* 1:1–8.
- Moline AB, Shuster SM, Hendrickson DA, Marks JC. 2004.** Genetic variation in a desert aquatic snail (*Nymphophilus minckleyi*) from Cuatro Ciénegas, Coahuila, Mexico. *Hydrobiologia* 522:179–192 DOI 10.1023/B:HYDR.0000029972.80491.d3.
- Morales MS, Christie D, Villalba R, Argollo J, Pacajes J, Silva JS, Alvarez C, Llancabure JC, Soliz-Gamboa CC. 2012.** Precipitation changes in the South American Altiplano since 1300 AD reconstructed by tree-rings. *Climate of the Past* 8:653–666 DOI 10.5194/cp-8-653-2012.
- Morales P, Vila I, Poulin E. 2011.** Genetic structure in remnant populations of an endangered cyprinodontid fish, *Orestias ascotanensis*, endemic to the Ascotán salt pan of the Altiplano. *Conservation Genetics* 12:1639–1643 DOI 10.1007/s10592-011-0245-6.
- Mossop KD, Adams M, Unmack PJ, Smith KL, Wong BBM, Chapple DG. 2015.** Dispersal in the desert: ephemeral water drives connectivity and phylogeography of an arid-adapted fish. *Journal of Biogeography* 42:2374–2388 DOI 10.1111/jbi.12596.
- Murphy AL, Pavlova A, Thompson R, Davis J, Sunnucks P. 2015.** Swimming through sand: connectivity of aquatic fauna in deserts. *Ecology and Evolution* 5:5252–5264 DOI 10.1002/ece3.1741.

- Murphy NP, Breed MF, Guzik MT, Cooper SJB, Austin AD. 2012.** Trapped in desert springs: phylogeography of Australian desert spring snails. *Journal of Biogeography* **39**:1573–1582 DOI [10.1111/j.1365-2699.2012.02725.x](https://doi.org/10.1111/j.1365-2699.2012.02725.x).
- Murphy NP, Guzik MT, Wilmer JW. 2010.** The influence of landscape on population structure of four invertebrates in groundwater springs. *Freshwater Biology* **55**:2499–2509 DOI [10.1111/j.1365-2427.2010.02479.x](https://doi.org/10.1111/j.1365-2427.2010.02479.x).
- Pfenninger M, Posada D. 2002.** Phylogeographic history of the land snail *Candidula nifasciata* (Helicellinae, Stylommatophora): fragmentation, corridor migration, and secondary contact. *Evolution* **56**:1776–1788 DOI [10.1111/j.0014-3820.2002.tb00191.x](https://doi.org/10.1111/j.0014-3820.2002.tb00191.x).
- Pilsbry HA. 1924.** South American land and fresh-water Mollusks: notes and descriptions. *Academy of Natural Sciences* **76**:49–66.
- Placzek CJ, Quade J, Patchett PJ. 2011.** Isotopic tracers of paleohydrologic change in large lakes of the Bolivian Altiplano. *Quaternary Research* **75**:231–244 DOI [10.1016/j.yqres.2010.08.004](https://doi.org/10.1016/j.yqres.2010.08.004).
- Placzek CJ, Quade J, Patchett PJ. 2013.** A 130ka reconstruction of rainfall on the Bolivian Altiplano. *Earth and Planetary Science Letters* **363**:97–108 DOI [10.1016/j.epsl.2012.12.017](https://doi.org/10.1016/j.epsl.2012.12.017).
- R Core Team. 2017.** R: a language and environment for statistical computing. Vienna: R Foundation for Statistical Computing.
- Rambaut A, Suchard MA, Drummond AJ. 2014.** Tracer v1.6. Available at <http://beast.bio.ed.ac.uk/Tracer>.
- Ramos-Onsins SE, Rozas J. 2002.** Statistical properties of new neutrality tests against population growth. *Molecular Biology and Evolution* **19**:2092–2100 DOI [10.1093/oxfordjournals.molbev.a004034](https://doi.org/10.1093/oxfordjournals.molbev.a004034).
- Risacher F, Alonso H, Salazar C. 1999.** *Geoquímica de aguas en cuencas cerradas: I, II y III Regiones (Chile)*. Vol. III. Santiago: Ministerio de Obras Públicas (Dirección General de Aguas), Universidad Católica del Norte, Institut de Recherche pour le Développement, Convenio de Cooperación DGA-UCN-IRD. SIT N° 51.
- Risacher F, Alonso H, Salazar C. 2003.** The origin of brines and salts in Chilean salars: a hydrochemical review. *Earth-Science Reviews* **63**:249–293 DOI [10.1016/S0012-8252\(03\)00037-0](https://doi.org/10.1016/S0012-8252(03)00037-0).
- Risacher F, Fritz B, Hauser A. 2011.** Origin of components in Chilean thermal waters. *Journal of South American Earth Sciences* **31**:153–170 DOI [10.1016/j.jsames.2010.07.002](https://doi.org/10.1016/j.jsames.2010.07.002).
- Rogers AR, Harpending H. 1992.** Population growth makes waves in the distribution of pairwise genetic differences. *Molecular Biology and Evolution* **9**:552–569.
- Sáez PA, Fibla P, Correa C, Sallaberry M, Salinas HF, Veloso A, Mella J, Iturra P, Méndez MA. 2014.** A new endemic lineage of the Andean frog genus *Telmatobius* (Anura, Telmatobiidae) from the western slopes of the central Andes. *Zoological Journal of the Linnean Society* **171**:769–782 DOI [10.1111/zoj.12152](https://doi.org/10.1111/zoj.12152).
- Sánchez R, Sepúlveda R, Brante A, Cárdenas L. 2011.** Spatial pattern of genetic and morphological diversity in the direct developer *Acanthina monodon* (Gastropoda: Mollusca). *Marine Ecology Progress Series* **434**:121–131 DOI [10.3354/meps09184](https://doi.org/10.3354/meps09184).

- Seidel RA, Lang BK, Berg DJ. 2009. Phylogeographic analysis reveals multiple cryptic species of amphipods (Crustacea: Amphipoda) in Chihuahuan Desert springs. *Biological Conservation* 142:2303–2313 DOI 10.1016/j.biocon.2009.05.003.
- Sepúlveda RD, Ibáñez CM. 2012. Clinal variation in the shell morphology of intertidal snail *Acanthina monodon* in the Southeastern Pacific Ocean. *Marine Biology Research* 8:363–372 DOI 10.1080/17451000.2011.634813.
- Sproul JS, Houston DD, Davis N, Barrington E, Oh SY, Evans RP, Shiozawa DK. 2014. Comparative phylogeography of codistributed aquatic insects in western North America: insights into dispersal and regional patterns of genetic structure. *Freshwater Biology* 59:2051–2063 DOI 10.1111/fwb.12406.
- Strecker MR, Alonso RN, Bookhagen B, Carrapa B, Hilley GE, Sobel ER, Trauth MH. 2007. Tectonics and climate of the Southern Central Andes. *Annual Review of Earth and Planetary Sciences* 35:747–787 DOI 10.1146/annurev.earth.35.031306.140158.
- Tajima F. 1989. Statistical method for testing the neutral mutation hypothesis by DNA polymorphism. *Genetics* 123:585–595.
- Van Leeuwen C, Huig N, Van der Velde G, Van Alen T, Wagemaker C, Sherman C, Klaassen M, Figuerola J. 2013. How did this snail get here? Several dispersal vectors inferred for an aquatic invasive species. *Freshwater Biology* 58:88–99 DOI 10.1111/fwb.12041.
- Van Leeuwen C, Van der Velde G, Van Groenendael J, Klaassen M. 2012b. Gut travellers: internal dispersal of aquatic organisms by waterfowl. *Journal of Biogeography* 39:2031–2040 DOI 10.1111/jbi.12004.
- Van Leeuwen C, Van der Velde G, Van Lith B, Klaassen M. 2012a. Experimental quantification of long distance dispersal potential of aquatic snails in the gut of migratory birds. *PLOS ONE* 7:e32292 DOI 10.1371/journal.pone.0032292.
- Victoriano PF, Muñoz Mendoza C, Sáez PA, Salinas HF, Muñoz Ramírez C, Sallaberry M, Fibla P, Méndez MA. 2015. Evolution and conservation on top of the world: phylogeography of the marbled water frog (*Telmatobius marmoratus* species complex; Anura, Telmatobiidae) in protected areas of Chile. *Journal of Heredity* 106:546–559 DOI 10.1093/jhered/esv039.
- Vila I, Morales P, Scott S, Poulin E, Véliz D, Harrod C, Méndez MA. 2013. Phylogenetic and phylogeographic analysis of the genus *Orestias* (Teleostei: Cyprinodontidae) in the southern Chilean Altiplano: the relevance of ancient and recent divergence processes in speciation. *Journal of Fish Biology* 82:927–943 DOI 10.1111/jfb.12031.
- Vuille M, Bradley RS, Keimig F. 2000. Climate variability in the andes of ecuador and its relation to tropical Pacific and Atlantic sea surface temperature anomalies. *Journal of Climate* 13(14):2520–2535 DOI 10.1175/1520-0442(2000)013<2520:CVITAO>2.0.CO;2.
- Wilke T, Haase M, Hershler R, Liu H-P, Misof B, Ponder W. 2013. Pushing short DNA fragments to the limit: phylogenetic relationships of “hydrobioid” gastropods (Caenogastropoda: Rissooidea). *Molecular Phylogenetics and Evolution* 66:715–736 DOI 10.1016/j.ympev.2012.10.025.



- Wilke T, Schultheiß R, Albrecht C. 2009.** As time goes by: a simple fool's guide to molecular clock approaches in invertebrates. *American Malacological Bulletin* 27:25–45 DOI [10.4003/006.027.0203](https://doi.org/10.4003/006.027.0203).
- Wilmer JW, Elkin C, Wilcox C, Murray L, Niejalkes D, Possingham H. 2008.** The influence of multiple dispersal mechanisms and landscape structure on population clustering and connectivity in fragmented artesian spring snail populations. *Molecular Ecology* 17:3733–3751 DOI [10.1111/j.1365-294X.2008.03861.x](https://doi.org/10.1111/j.1365-294X.2008.03861.x).
- Winnepenninckx B, Backeljau T, De Wachter R. 1993.** Extraction of high molecular weight DNA from molluscs. *Trends in Genetics* 9(12):407 DOI [10.1016/0168-9525\(93\)90102-N](https://doi.org/10.1016/0168-9525(93)90102-N).
- Zhou J, Lau K-M. 1998.** Does a Monsoon climate exist over South America? *Journal of Climate* 11:1020–1040 DOI [10.1175/1520-0442\(1998\)011<1020:DAMCEO>2.0.CO;2](https://doi.org/10.1175/1520-0442(1998)011<1020:DAMCEO>2.0.CO;2).
- Zickovich JM, Bohonak AJ. 2007.** Dispersal ability and genetic structure in aquatic invertebrates: a comparative study in southern California streams and reservoirs. *Freshwater Biology* 52:1982–1996 DOI [10.1111/j.1365-2427.2007.01822.x](https://doi.org/10.1111/j.1365-2427.2007.01822.x).