



Stable carbon and nitrogen isotopic composition of leaves, litter, and soils of various ecosystems along an elevational and land-use gradient at Mount Kilimanjaro, Tanzania

Friederike Gerschlauer¹, Gustavo Saiz^{2,1}, David Schellenberger Costa³, Michael Kleyer³, Michael Dannenmann¹, and Ralf Kiese¹

¹Institute of Meteorology and Climate Research, Karlsruhe Institute of Technology, Garmisch-Partenkirchen, Germany

²Department of Environmental Chemistry, Faculty of Sciences, Universidad Católica de la Santísima Concepción, Concepción, Chile

³Department of Biology and Environmental Sciences, University of Oldenburg, Oldenburg, Germany

Correspondence: Gustavo Saiz (gsaiz@ucsc.cl)

Received: 14 September 2018 – Discussion started: 22 October 2018

Revised: 28 December 2018 – Accepted: 13 January 2019 – Published: 25 January 2019

Abstract. Variations in the stable isotopic composition of carbon ($\delta^{13}\text{C}$) and nitrogen ($\delta^{15}\text{N}$) of fresh leaves, litter, and topsoils were used to characterize soil organic matter dynamics of 12 tropical ecosystems in the Mount Kilimanjaro region, Tanzania. We studied a total of 60 sites distributed along five individual elevational transects (860–4550 m a.s.l.), which define a strong climatic and land-use gradient encompassing semi-natural and managed ecosystems. The combined effects of contrasting environmental conditions, vegetation, soil, and management practices had a strong impact on the $\delta^{13}\text{C}$ and $\delta^{15}\text{N}$ values observed in the different ecosystems. The relative abundance of C_3 and C_4 plants greatly determined the $\delta^{13}\text{C}$ of a given ecosystem. In contrast, $\delta^{15}\text{N}$ values were largely controlled by land-use intensification and climatic conditions.

The large $\delta^{13}\text{C}$ enrichment factors ($\delta^{13}\text{C}_{\text{litter}} - \delta^{13}\text{C}_{\text{soil}}$) and low soil C/N ratios observed in managed and disturbed systems agree well with the notion of altered SOM dynamics. Besides the systematic removal of the plant biomass characteristic of agricultural systems, annual litterfall patterns may also explain the comparatively lower contents of C and N observed in the topsoils of these intensively managed sites. Both $\delta^{15}\text{N}$ values and calculated $\delta^{15}\text{N}$ -based enrichment factors ($\delta^{15}\text{N}_{\text{litter}} - \delta^{15}\text{N}_{\text{soil}}$) suggest the tightest nitrogen cycling at high-elevation (> 3000 m a.s.l.) ecosystems and more open nitrogen cycling both in grass-dominated and intensively managed cropping systems. However, claims about the nature of the N cycle (i.e. open or closed) should

not be made solely on the basis of soil $\delta^{15}\text{N}$ as other processes that barely discriminate against ^{15}N (i.e. soil nitrate leaching) have been shown to be quite significant in Mount Kilimanjaro's forest ecosystems. The negative correlation of $\delta^{15}\text{N}$ values with soil nitrogen content and the positive correlation with mean annual temperature suggest reduced mineralization rates and thus limited nitrogen availability, at least in high-elevation ecosystems. By contrast, intensively managed systems are characterized by lower soil nitrogen contents and warmer conditions, leading together with nitrogen fertilizer inputs to lower nitrogen retention and thus significantly higher soil $\delta^{15}\text{N}$ values. A simple function driven by soil nitrogen content and mean annual temperature explained 68 % of the variability in soil $\delta^{15}\text{N}$ values across all sites. Based on our results, we suggest that in addition to land-use intensification, increasing temperatures in a changing climate may promote soil carbon and nitrogen losses, thus altering the otherwise stable soil organic matter dynamics of Mount Kilimanjaro's forest ecosystems.

1 Introduction

Conversion of natural ecosystems to agriculture is a worldwide phenomenon, which is of particular significance in tropical regions where human population growth rates are currently the highest (FAO and JRC, 2012). Changes in climate and land use significantly alter vegetation composition and biogeochemical cycles, causing a strong impact on carbon (C) and nitrogen (N) turnover and stocks (Smith et al., 2014). Tropical forest biomes are particularly relevant in this context, as they are significant C storages and N turnover hotspots (Bai et al., 2012; Hedin et al., 2009; Lewis et al., 2009; Pan et al., 2011; Vitousek, 1984). Considering the increasing pressure on natural land, it is becoming even more crucial to understand how anthropogenic interventions affect ecosystem C and N cycling and gain better knowledge about the main drivers of nutrient cycling, as well as the associated exchange processes with the atmosphere and hydrosphere in tropical environments.

Research exploiting the natural abundance of stable isotopes has proved quite suitable for investigating potential impacts of land-use and/or climate change on C and N cycling in terrestrial systems (Michener and Lajtha, 2007; Panettieri et al., 2017; Saiz et al., 2015a). Variations in the stable isotopic composition of C ($\delta^{13}\text{C}$) and N ($\delta^{15}\text{N}$) in plants and soils are the result of fractionation processes occurring during ecosystem exchange of C and N. Thus, $\delta^{13}\text{C}$ and $\delta^{15}\text{N}$ can serve as valuable indicators about ecosystem state and provide useful insights on how these systems respond to biotic and abiotic factors (Dawson et al., 2002; Höglberg, 1997; Ma et al., 2012; Pardo and Nadelhoffer, 2010; Peterson and Fry, 1987; Robinson, 2001).

Plants discriminate against ^{13}C (CO_2 (carbon dioxide) during photosynthetic CO_2 fixation depending on plant metabolism (i.e. C_3 and C_4 photosynthetic pathways). Most tropical grasses typically employ the C_4 photosynthetic pathway ($\delta^{13}\text{C}$ values $> -15\text{‰}$), while trees and shrubs use the C_3 photosynthetic pathway ($\delta^{13}\text{C}$ values $< -24\text{‰}$) (Bird et al., 1994; Bird and Pousai, 1997; Cernusak et al., 2013; Farquhar et al., 1980). The distribution of C_3 and C_4 vegetation shows clear patterns along elevational gradients, with increasing abundance of C_3 species towards high elevations (Bird et al., 1994; Körner et al., 1991; Tieszen et al., 1979). Environmental conditions such as water availability also exert a significant influence on isotopic discrimination during atmospheric CO_2 fixation. Accordingly, compared to optimal moisture conditions, water stress leads to the enrichment of ^{13}C in C_3 plants (Farquhar and Sharkey, 1982), while this isotopic fractionation is less obvious or even absent in C_4 plants (Ma et al., 2012; Swap et al., 2004).

The soil organic matter (SOM) pool integrates the isotopic signature of the precursor biomass over different spatio-temporal scales (Saiz et al., 2015a). Variation in soil $\delta^{13}\text{C}$ values represents a valuable tool to better assess SOM dynamics, mineralization processes, or reconstruct past fire

regimes (Saiz et al., 2015a; Wynn and Bird, 2007). The $\delta^{13}\text{C}$ of SOM in a given ecosystem is greatly controlled by the relative abundance of C_3 and C_4 plants due to their contrasting C isotopic composition. Therefore, strong variations in soil $\delta^{13}\text{C}$ can also be used to identify sources of particulate organic matter and vegetation shifts such as woody thickening. However, fractionation effects associated with differential stabilization of SOM compounds, microbial reprocessing of SOM, soil physico-chemical characteristics, and the terrestrial Seuss effect preclude a straightforward interpretation of soil $\delta^{13}\text{C}$ values (Saiz et al., 2015a).

Plant and soil $\delta^{15}\text{N}$ relate to environmental and management conditions controlling N turnover, availability, and losses. $\delta^{15}\text{N}$ values in soils are generally more positive than those of vegetation due to the relatively large isotopic fractionation occurring during soil N transformations (Dawson et al., 2002). The N cycle of a given ecosystem may be characterized as closed if both efficient microbial N retention and the absence of external N inputs (e.g. atmospheric deposition and fertilizer additions) prevent substantial gaseous and/or leaching N losses. In contrast, open ecosystem N cycling is characterized by significant inputs and losses of N. On the one hand, gaseous N losses from soils are strongly depleted in ^{15}N due to the high fractionation factors associated with these processes (Denk et al., 2017). This results in high $\delta^{15}\text{N}$ values of the residual substrate, which consequently leaves less importance to impacts of external N additions (Robinson, 2001; Zech et al., 2011). On the other hand, N leaching seems to only discriminate slightly against ecosystem ^{15}N . According to Houlton and Bai (2009) $\delta^{15}\text{N}$ values of drained water agree well with those of soils across various natural ecosystems worldwide. Moreover, it is also important to consider the possibility that soil $\delta^{15}\text{N}$ may also be influenced by other factors including rooting depth, uptake of different N compounds, and symbiotic N_2 fixation (Nardoto et al., 2014). Variations in $\delta^{15}\text{N}$ values of plants and soils have been successfully applied to characterize N cycling across a large variety of ecosystems worldwide (Amundson et al., 2003; Booth et al., 2005; Craine et al., 2015a, b; Martinelli et al., 1999; Nardoto et al., 2014). This includes research work that has particularly focused on the study of N losses derived from land-use changes or intensification (Eshetu and Höglberg, 2000; Piccolo et al., 1996; Zech et al., 2011).

Information on ecosystem C and N cycling is still scarce in many tropical ecosystems, particularly in remote regions of Africa (Abaker et al., 2016; 2018; Saiz et al., 2012; Townsend et al., 2011). Furthermore, feedbacks between C and N cycles, such as limitations of N availability in ecosystem C sequestration and net primary productivity in tropical forest, require urgent investigations (Gruber and Galloway, 2008; Zaehle, 2013). In such a context, the Kilimanjaro region in Tanzania offers the rare possibility to study a broad range of tropical ecosystems across contrasting land-use management intensities and varying climatic conditions. This region hosts a large variety of semi-natural and managed

ecosystems as a result of the strong elevational and land-use gradient.

We hypothesized that (i) vegetation composition (C_3 / C_4) is the main control for ecosystem $\delta^{13}C$ values, whereas (ii) $\delta^{15}N$ values are rather controlled by land-use management and climatic conditions. The main aim of this study is to evaluate the potential of $\delta^{13}C$ and $\delta^{15}N$ values in plant and soil material to assess C and N cycling across a broad variety of semi-natural and managed ecosystems under varying climatic conditions.

2 Materials and methods

2.1 Study sites

This study was conducted on the southern slopes of Mount Kilimanjaro (3.07° S, 37.35° E; 5895 m a.s.l.) in north-east Tanzania. The climate is characterized by a bimodal precipitation pattern with a major rainy season between March and May and the other peak between October and November. Recently, Appelhans et al. (2016) used a network of 52 meteorological stations strategically deployed in the Kilimanjaro region to measure air temperature and precipitation. They then used geo-statistical and machine-learning techniques for the gap filling of the recorded meteorological time series and their regionalization, which provides the means to calculate the meteorological data used for the complete set of sites (60) used in our work. Please refer to Appelhans et al. (2016) for more details. Maximum mean annual precipitation (MAP) of 2552 mm occurs at an elevation of around 2260 m a.s.l., decreasing towards lower and higher elevations, reaching 657 and 1208 mm yr⁻¹ at 871 and 4550 m, respectively (Table 1). Variations in air temperature are dominated by diurnal rather than seasonal patterns (Duane et al., 2008). Mean annual temperature (MAT) decreases with increasing elevation, ranging from 24.8 °C at 860 m to 3.5 °C at 4550 m (Table 1).

Five altitudinal transects ranging from 860 to 4550 m a.s.l. were established along the mountain slopes. At each transect, 12 ecosystems occurring over a strong land-use gradient encompassing intensively managed cropping systems and semi-natural stands were investigated. Hence, the total number of plots studied was 60 (5 transects × 12 ecosystems; Table 1 and Fig. 1). The cropping systems comprised multilayer and multi-crop agroforestry home gardens (Hom), monoculture coffee plantations (Cof) with dispersed shading trees, and maize fields (Mai) subject to regular albeit moderate fertilizer and pesticide applications. Plant litter is regularly removed from Cof and Mai sites. Home gardens are manually ploughed, while combustion engine machinery is used for ploughing coffee plantations and maize fields. Coffee plantations are irrigated with drip irrigation systems. Both Hom and Cof sites still host indigenous forest trees that include *Albizia schimperii*, a species that may potentially fix atmospheric N. This is one of the five most abundant species in

Table 1. General characteristics of ecosystems investigated at Mount Kilimanjaro, Tanzania.

Ecosystem	Land-use type	Elevation (m a.s.l.)	MAP (mm)	MAT (°C)	MAT	Soil properties						C/N ratio
						Soil type	pH (CaCl ₂)	Clay (%)	Sand (%)	Organic carbon (%)	Total nitrogen (%)	
Savanna (Sav)	(M) extensive grazing, grass cutting	971 (40)	764 (50)	23.7 (0.3)	23.7 (0.3)	Leptosol	6.6 (0.3)	27.3 (4.0)	39.3 (8.7)	3.5 (0.4)	0.2 (0.0)	13.5 (0.2)
Maize field (Mai)	(M) cropped agriculture	938 (25)	674 (34)	23.6 (0.4)	23.6 (0.4)	Nitrosol	5.6 (0.3)	37.4 (4.5)	20.3 (7.7)	1.6 (0.2)	0.1 (0.0)	11.8 (0.1)
Coffee plantation (Cof)	(M) cropped agriculture	1349 (78)	1393 (96)	19.8 (0.7)	19.8 (0.7)	Vertisol	4.5 (0.3)	45.2 (8.0)	17.8 (4.5)	4.2 (0.4)	0.4 (0.0)	10.5 (0.2)
Home garden (Hom)	(M) cropped agroforestry	1478 (112)	1656 (177)	18.7 (0.8)	18.7 (0.8)	Andosol	5.4 (0.4)	45.4 (8.0)	16.5 (5.8)	6.7 (1.3)	0.6 (0.1)	11.5 (0.4)
Grassland (Gra)	(M) extensive grazing, grass cutting	1506 (84)	1610 (135)	18.9 (0.7)	18.9 (0.7)	Umbrisol	5.1 (0.4)	48.1 (8.1)	16.0 (5.1)	5.3 (2.1)	0.4 (0.2)	12.6 (0.2)
Lower montane forest (Flm)	(S-N) montane forest	1806 (71)	2201 (33)	15.5 (0.3)	15.5 (0.3)	Andosol	4.7 (0.3)	47.3 (5.2)	14.5 (2.2)	22.7 (4.9)	1.6 (0.2)	13.3 (1.5)
Ocotea forest (Foc)	(S-N) montane forest	2464 (106)	2388 (73)	11.5 (0.4)	11.5 (0.4)	Andosol	3.5 (0.2)	52.3 (4.5)	10.4 (2.3)	40.2 (1.5)	2.7 (0.1)	14.9 (0.7)
Ocotea forest disturbed (Fod)	(S-N) montane forest	2378 (56)	2334 (35)	11.9 (0.4)	11.9 (0.4)	Andosol	3.6 (0.2)	53.9 (3.4)	10.1 (2.5)	32.0 (1.8)	2.2 (0.2)	15.1 (1.3)
Podocarpus forest (Fpo)	(S-N) montane forest	2856 (41)	2036 (27)	9.6 (0.2)	9.6 (0.2)	Andosol	3.8 (0.1)	48.7 (1.1)	9.4 (1.3)	37.0 (1.0)	2.4 (0.1)	15.5 (0.8)
Podocarpus forest disturbed (Fpd)	(S-N) montane forest	2904 (48)	2056 (29)	9.7 (0.3)	9.7 (0.3)	Andosol	4.0 (0.2)	45.8 (3.4)	12.6 (3.3)	33.8 (2.3)	1.7 (0.0)	19.9 (1.4)
Erica forest (Fer)	(S-N) montane forest	3716 (77)	1517 (54)	6.2 (0.6)	6.2 (0.6)	Andosol	3.9 (0.2)	29.5 (5.1)	24.1 (6.2)	28.1 (2.4)	1.5 (0.1)	18.9 (0.7)
Helichrysum vegetation (Hel)	(S-N) alpine scrub vegetation	4250 (100)	1293 (31)	4.2 (0.4)	4.2 (0.4)	Andosol	5.7 (0.3)	7.9 (1.4)	69.9 (9.5)	6.1 (3.3)	0.3 (0.2)	12.0 (1.1)

Land uses are generically classified as managed (M) and semi-natural ecosystems (S-N). MAP and MAT stand for mean annual precipitation and temperature, respectively. Climatic values are according to Appelhans et al. (2016). Data represent mean values ($n = 5 \pm SE$) for different ecosystems. The most representative soil type is shown for each ecosystem. Soil properties are given for topsoil (0–10 cm for pH and soil texture, 0–5 cm for soil organic carbon and total nitrogen).

two and four of the Hom and Cof sites, respectively, making up less than 25 % of the vegetation cover in all cases. Grasslands (Gra) and savannas (Sav) are extensively managed by means of domestic grazing and occasional grass cutting, thus having significantly lower anthropogenic disturbances than cropping systems. Semi-natural ecosystems include several montane forest stands. These include lower montane (Flm), *Ocotea* (Foc), *Podocarpus* (Fpo), *Erica* (Fer), and alpine shrub vegetation *Helichrysum* (Hel). Even though lower montane forests are currently under protection they are still subject to sporadic illegal logging. In addition to sampling undisturbed forest ecosystems of *Ocotea* and *Podocarpus*, we purposely studied sites that had been affected by logging activities and fire events prior to the establishment of the Kilimanjaro National Park (Soini, 2005): *Ocotea* (Fod) and *Podocarpus* (Fpd) (Table 1). Erica forests represent Africa's highest forests in the subalpine zone. Higher above is the alpine zone, the realm of *Helichrysum* vegetation that is dominated by cushion plants and tussock grasses (Ensslin et al., 2015; Hemp, 2005). Potential ecosystem productivity and decomposition rates show a hump-shaped pattern resembling that of precipitation (Supplement Fig. S1). It is interesting to see the close match between the two variables along the elevation range, although this trend weakens slightly towards higher-elevation sites. Optimum growth and decomposition conditions are shown between 1800 and 2500 m a.s.l. These locations correspond to low-altitude forest ecosystems (Flm and Foc) that do not experience severe seasonal limitations in moisture or temperature as is otherwise the case in lower- and higher-elevation systems that are moisture and temperature limited, respectively (Becker and Kuzyakov, 2018).

Detailed physico-chemical characteristics of the dominant soils are listed in Table 1. Soils in the Mount Kilimanjaro region are mainly derived from volcanic rocks and ashes. The wide array of climatic conditions present along the elevational gradient influence soil genesis, which results in the occurrence of andosols at high elevations and soils of more advanced genesis at lower elevations (e.g. nitosols) (Majule, 2003).

It is extremely difficult to provide reliable estimates of both fertilizer and pesticide rates used in small household farms in sub-Saharan Africa. This is because the actual use of these products is strongly dependent on both its availability in the local and/or regional market, the economic circumstances of each individual farmer, and individual perceptions about their use (Saiz and Albrecht, 2016). The only sites receiving fertilizer are the two monocultures, maize (Mai) fields and coffee (Cof) plantations, and to a lesser extent the home garden (Hom) sites. In the latter sites Gütlein et al. (2018) report that weed control is mainly done by hand, and the use of mineral or organic N fertilizers is low or non-existent. Extensively managed sites (i.e. Sav and Gra) receive varying amounts of organic inputs as a result of grazing activities, but again, their actual rates are unknown. A more

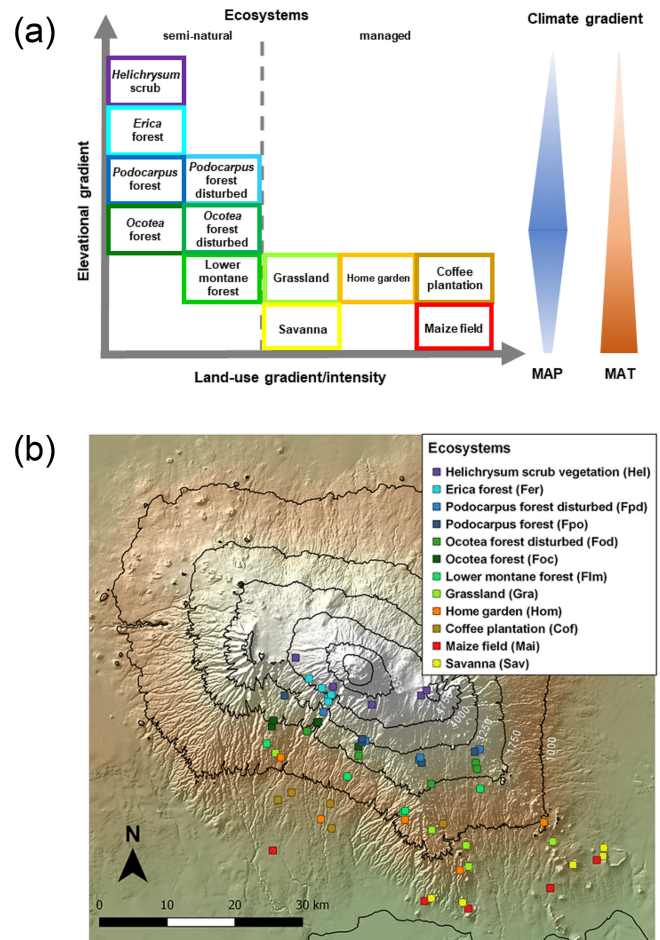


Figure 1. Geographical distribution of investigated ecosystems: (a) along the elevational and land-use gradient. MAP denotes mean annual precipitation and MAT mean annual temperature. The colours of the boxes framing the ecosystem names match the colours of symbols in the GeoTIFF panel below; (b) along the southern slope of Mount Kilimanjaro. Symbols represent individual ecosystems (12) replicated five times (60 study sites in total).

detailed explanation on fertilizer and pesticide inputs used in the region is provided in the Supplement (Table S1).

2.2 Sampling and analyses

Fieldwork took place in February and March in 2011 and 2012. Sampling was conducted on 50 × 50 m plots established at each of the 60 studied sites (12 ecosystems × 5 transects). Surface litter and mineral topsoil (0–5 cm) were sampled at five locations (four corners and the central point) at each plot. Additionally, fresh mature leaves of the five most abundant plant species covering 80 % of total plant biomass per site were collected (Schellenberg Costa et al., 2017). All sampled materials (leaves, litter, and soil) were air-dried until constant weight, and leaf material was subsequently oven-dried at 70 °C for 60 h prior to grinding. Soil was sieved to

2 mm with visible root fragments being further removed prior to grinding with a mixer mill (MM200, Retsch, Haan Germany). Soil pH was determined with a pH meter (MultiCal SenTix61, WTW, Weilheim, Germany) in a 0.01 M CaCl₂ solution, with a CaCl₂-to-soil ratio of 2 : 1. Particle size distribution was determined gravimetrically using the pipette method (van Reeuwijk, 2002).

All soil, litter, and leaf samples were analysed with a dry combustion elemental analyser (Costech International S.p.A., Milano, Italy) fitted with a zero-blank autosampler coupled to a ThermoFinnigan DeltaPlus XL using continuous-flow isotope ratio mass spectrometry (CF-IRMS) for the determination of the abundance of elemental C and N and their stable isotopic composition ($\delta^{13}\text{C}$, $\delta^{15}\text{N}$). Precisions (standard deviations) on internal standards for elemental C and N concentrations and stable isotopic compositions were better than 0.08 ‰ and 0.2 ‰, respectively.

Natural ^{13}C or ^{15}N abundances are expressed in δ units according to Eq. (1):

$$\delta(\text{‰}) = (R_{\text{sample}} - R_{\text{standard}}/R_{\text{standard}}) \times 1000, \quad (1)$$

where R_{sample} denotes the ratio $^{13}\text{C}/^{12}\text{C}$ or $^{15}\text{N}/^{14}\text{N}$ in the sample, and R_{standard} denotes the ratios in Pee Dee Belemnite or atmospheric N₂ (international standards for C and N, respectively). The average values for the plant samples were weighted considering their relative abundance at each site. Individual values for soil, litter, and leaves were averaged for each plot.

In addition, both $\delta^{13}\text{C}$ - and $\delta^{15}\text{N}$ -based enrichment factors (ε) were calculated following Eqs. (2) and (3):

$$\varepsilon_{\text{C}} = \delta^{13}\text{C}_{\text{litter}} - \delta^{13}\text{C}_{\text{soil}}, \quad (2)$$

$$\varepsilon_{\text{N}} = \delta^{15}\text{N}_{\text{litter}} - \delta^{15}\text{N}_{\text{soil}}. \quad (3)$$

These were used as indicators for SOM decomposition dynamics and ecosystem N status (Garten et al., 2008; Mariotti et al., 1981). Note that we use the stable isotopic values of litter material rather than fresh leaves from various species to calculate enrichment factors, since litter provides a more unbiased representation of the quality, quantity, and spatio-temporal dynamics of organic inputs entering the SOM pool (Saiz et al., 2015a).

2.3 Statistical analysis

The normal distribution of the data was confirmed with the Shapiro–Wilk test. One-way ANOVA was performed to test for significant differences between ecosystems, while Tukey's HSD was used as a post hoc procedure to test for significant differences across sites ($P \leq 0.05$). Correlation analyses were performed to identify soil, foliar, and climatic variables influencing soil $\delta^{15}\text{N}$ values. Subsequently, a principal component analysis (PCA) was conducted to reveal relationships between the main variables affecting soil $\delta^{15}\text{N}$ values. The PCA was based on a correlation matrix including soil (C

and N concentrations, C/N ratio, $\delta^{13}\text{C}$, pH values, sand and clay contents) and climatic parameters (MAT and MAP). A stepwise multiple regression was used to identify the main driving parameters determining soil $\delta^{15}\text{N}$ across the elevational transect. All statistical analyses were conducted with R (version 3.2.2; R Core Team, 2015).

3 Results

3.1 General soil characteristics

Soil C and N contents were the highest in forest ecosystems and showed a decreasing trend towards managed sites (i.e. home gardens, grasslands, coffee, and maize fields) (Table 1). Also, natural savannas and *Helichrysum* ecosystems had lower soil C and N values compared to forest ecosystems. The low temperatures and sandy nature of the *Helichrysum* sites play a strong role in their characteristically low productivity and moderate decomposition potentials (Table 1; Fig. S1), which unquestionably affects the comparatively low soil C and N contents of these alpine systems.

An opposite trend to that of soil C and N abundance was observed for soil C/N ratios, whereby managed sites showed significantly lower values compared to those of semi-natural ecosystems. Soil pH values revealed acidic conditions at all sites, with the lowest values observed in forest sites having comparatively higher MAP (Table 1).

3.2 Variation of $\delta^{13}\text{C}$ values along the elevational and land-use gradient

There were large variations in $\delta^{13}\text{C}$ values along the elevational and land-use gradient, with distinct differences between managed and semi-natural ecosystems (Fig. 2). Compared to soils and litter, leaves invariably showed the lowest $\delta^{13}\text{C}$ values in all the studied ecosystems, with the exception of grasslands and savannas that exhibited lower soil $\delta^{13}\text{C}$ values than plant material.

The $\delta^{13}\text{C}$ values of semi-natural ecosystems ranged between -32.8 and -24.1 ‰ (mean \pm SE: soil -26.0 ± 0.2 ‰; litter -27.2 ± 0.2 ‰; leaves -29.3 ± 0.3 ‰), showing a progressive reduction with decreasing elevation (i.e. from 4500 to 1750 m a.s.l.; Fig. S2). The variation in $\delta^{13}\text{C}$ values was much higher (-29.7 ‰ to -13.3 ‰) in managed ecosystems located at lower elevations (i.e. between 860 and 1750 m a.s.l.; Fig. S2). The highest $\delta^{13}\text{C}$ values were observed in C₄-dominated ecosystems (i.e. savannas, maize fields, and grasslands; soil -16.8 ± 0.6 ‰, litter -19.3 ± 0.8 ‰, leaves -18.8 ± 1.1 ‰), while lower $\delta^{13}\text{C}$ values were obtained for coffee plantations and home gardens (soil -24.8 ± 0.5 ‰, litter -27.2 ± 0.4 ‰, leaves -27.3 ± 0.4 ‰). Coffee plantations showed a slight influence of C₄ vegetation in the soil data as a result of grasses growing between the rows of coffee plants. No significant variations were observed between $\delta^{13}\text{C}$ values of soils and those of

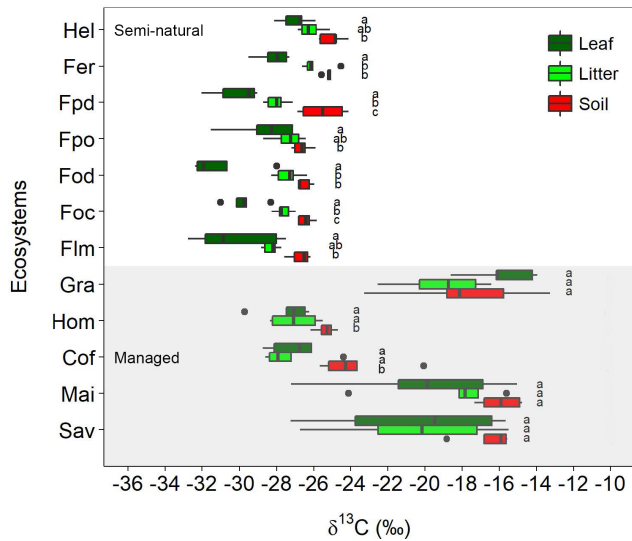


Figure 2. Variation in $\delta^{13}\text{C}$ values for leaves, litter, and soil along the Kilimanjaro elevational and land-use gradient. Ecosystem data represent the average values of five sites (one per each transect), with each site being composed of five samples ($n = 5$). Box plots show median values per ecosystem with whiskers representing the first and third quartiles. Dots represent outliers. The shaded region represents managed ecosystems (both intensively and extensively), while those unshaded indicate semi-natural ecosystems. Lower-case letters show significant differences between sampled materials within each ecosystem (one-way ANOVA followed by Tukey’s HSD test as a post hoc procedure, $P \leq 0.05$). The ecosystem acronyms used are as per Table 1. Mai, Cof, and Hom are managed cropping sites, Gra and Sav are extensively managed grasslands and savannas, and the rest represent semi-natural ecosystems. Sites are ordered by increasing altitude.

litter and leaves in the ecosystems with a predominance of C_4 vegetation (savannas, maize fields, and grasslands). Exploratory data analyses revealed that in most cases soil, litter, leaf, and climatic variables cross-correlated with each other (Table S2 in the Supplement).

Figure 3 shows relatively small variations in $\delta^{13}\text{C}$ enrichment factors ($> -1.25\text{‰}$) both in undisturbed semi-natural and extensively managed sites along the elevational gradient, while managed and disturbed sites show higher and more variable $\delta^{13}\text{C}$ enrichment factors.

3.3 Variation of $\delta^{15}\text{N}$ values along the elevational and land-use gradient

Significantly higher $\delta^{15}\text{N}$ values were observed for all sampled materials in the intensively managed (cropping) systems compared to semi-natural and grass-dominated ecosystems (Fig. 4a). The $\delta^{15}\text{N}$ values for managed systems ranged between -2.6 and 7.8‰ (mean \pm SE: soil $5.6 \pm 0.3\text{‰}$, litter $1.7 \pm 0.5\text{‰}$, leaves $2.0 \pm 0.5\text{‰}$). By contrast, semi-natural ecosystems had considerably lower $\delta^{15}\text{N}$ values, which ranged from -5.0‰ to 3.6‰ (soil $1.5 \pm 0.2\text{‰}$, litter

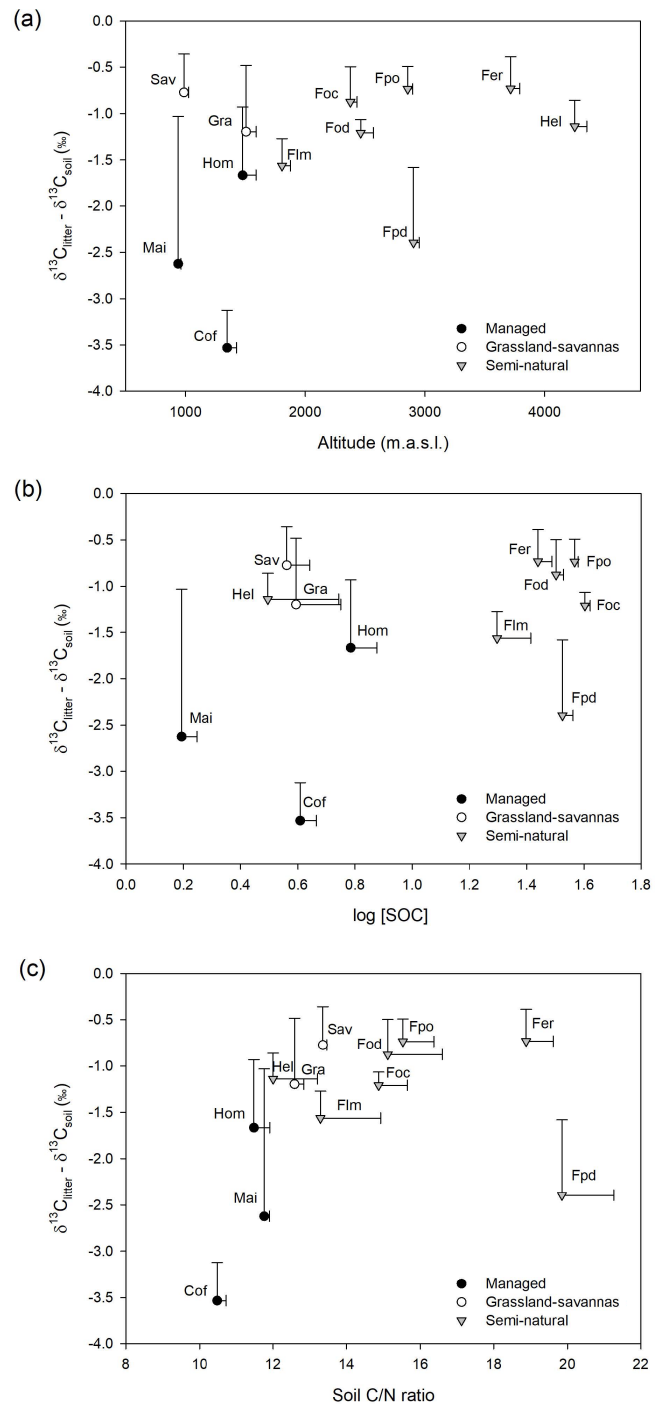


Figure 3. (a) Variation in $\delta^{13}\text{C}$ -based enrichment factors ($\delta^{13}\text{C}_{\text{litter-soil}}$) with elevation; (b) relationship between $\delta^{13}\text{C}$ -based enrichment factors ($\delta^{13}\text{C}_{\text{litter-soil}}$) and SOC concentration (log SOC); and (c) relationship between $\delta^{13}\text{C}$ -based enrichment factors ($\delta^{13}\text{C}_{\text{litter-soil}}$) and soil C/N ratios. Note: a savanna site with large C_3 influence was removed from the figure for clarity.

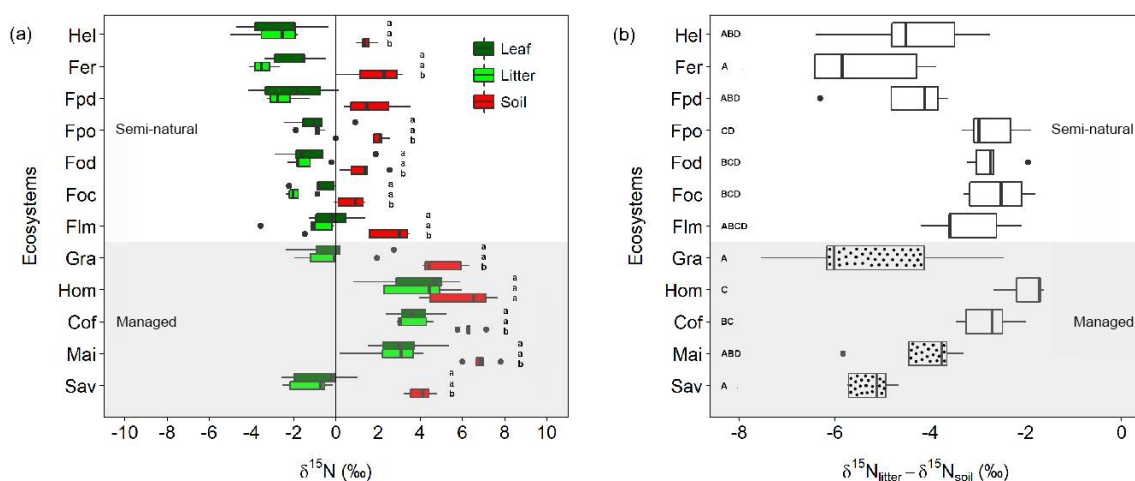


Figure 4. Variation in $\delta^{15}\text{N}$ values and $\delta^{15}\text{N}$ -based enrichment factors along the Kilimanjaro elevational and land-use gradient. **(a)** Variation in $\delta^{15}\text{N}$ values for leaves, litter, and soil material sampled along the Kilimanjaro elevational and land-use gradient. Box plots show median values per ecosystem with whiskers representing the first and third quartiles. Dots represent outliers. Ecosystem data represent the average values of five sites (one per each transect), with each site being composed of five samples. Lower-case letters show significant differences between sampled materials within each ecosystem (one-way ANOVA followed by Tukey's HSD test as a post hoc procedure, $P \leq 0.05$). **(b)** Variation in $\delta^{15}\text{N}$ -based enrichment factors ($\delta^{15}\text{N}_{\text{litter-soil}}$) calculated for the different ecosystems along the elevational and land-use gradient. Dotted box plots indicate ecosystems dominated by C_4 vegetation. Capital letters indicate significant differences between ecosystems (one-way ANOVA followed by Tukey's HSD test as a post hoc procedure, $P \leq 0.05$). The ecosystem acronyms used are the same as those in Table 1. Sites are ordered by increasing altitude.

$-2.1 \pm 0.2\text{‰}$, leaves $-1.3 \pm 0.3\text{‰}$). Soil $\delta^{15}\text{N}$ values were significantly higher than those of leaves and litter across all the ecosystems studied, with the only exception being agroforestry home gardens (Fig. 4a). $\delta^{15}\text{N}$ values of leaves and litter did not show significant differences within any given ecosystem.

Calculated $\delta^{15}\text{N}$ -based enrichment factors showed high variability across all ecosystems with values ranging from -7.5‰ to -1.6‰ (Fig. 4b). A differentiation between managed and natural ecosystems was less clear than for $\delta^{15}\text{N}$ values. The most negative enrichment factors ($< -4.0\text{‰}$) were observed for *Helichrysum*, *Erica*, *Podocarpus* disturbed, and grass-dominated ecosystems (savannas and grasslands). These enrichment factors were significantly less negative for montane forests at lower elevations (*Podocarpus*, *Ocotea*, and lower montane) and intensively managed (cropping) systems (i.e. home garden, coffee, and maize; Fig. 4b).

3.4 Impacts of soil and climatic variables on soil $\delta^{15}\text{N}$ values

Two principal components (PCs) explained 78.3% of the total soil $\delta^{15}\text{N}$ variation (Fig. 5). The first component explained 55.8% of the variability, and included soil chemistry and climatic variables (soil C and N concentrations, soil C/N ratio, soil pH, soil $\delta^{13}\text{C}$, MAP, and MAT). Highly significant correlations ($P < 0.001$) were obtained between PC 1 and the above factors ($r = 0.93, 0.93, 0.61, -0.87, -0.76, 0.87, \text{ and } -0.63$, respectively; Table S3). The sec-

ond component explained an additional 22.5% of soil $\delta^{15}\text{N}$ variability and included soil texture (clay and sand contents) and MAT. These variables were highly correlated with PC 2 ($r = -0.84, 0.82, \text{ and } -0.65$; Table S3). The principal component bi-plot showed a strong grouping between managed and semi-natural ecosystems (Fig. 5). Managed sites clustered around MAT, soil $\delta^{13}\text{C}$, and soil pH, while C_4 -dominated ecosystems (grassland, savannas, and maize fields) were preferentially influenced by the latter two variables. In contrast, semi-natural montane forest ecosystems rather grouped around soil chemical properties such as C and N contents, C/N ratio, and MAP, while alpine *Helichrysum* ecosystems clustered around soil sand content.

In addition to PCA, multiple regression analyses were performed using a stepwise procedure that identified soil N content and MAT as the main driving variables explaining the variation in soil $\delta^{15}\text{N}$. A paraboloid model explained 68% of this variability ($P < 0.05$; Fig. 6). The combination of relatively high soil N contents (1% to 3%) and low MAT (up to 14°C) invariably corresponded to low soil $\delta^{15}\text{N}$ values ($< 2\text{‰}$) characteristic of semi-natural ecosystems. Conversely, the relatively high soil $\delta^{15}\text{N}$ values ($> 2\text{‰}$) observed in managed ecosystems corresponded to low soil N contents ($< 1\%$) and comparatively high MAT (17 to 25°C).

The relationship between soil $\delta^{15}\text{N}$ values and climatic and edaphic variables provided valuable information about potentially different SOM dynamics in the various ecosystems studied, with data showing a clear differentiation between semi-natural and managed ecosystems (Fig. S4). The

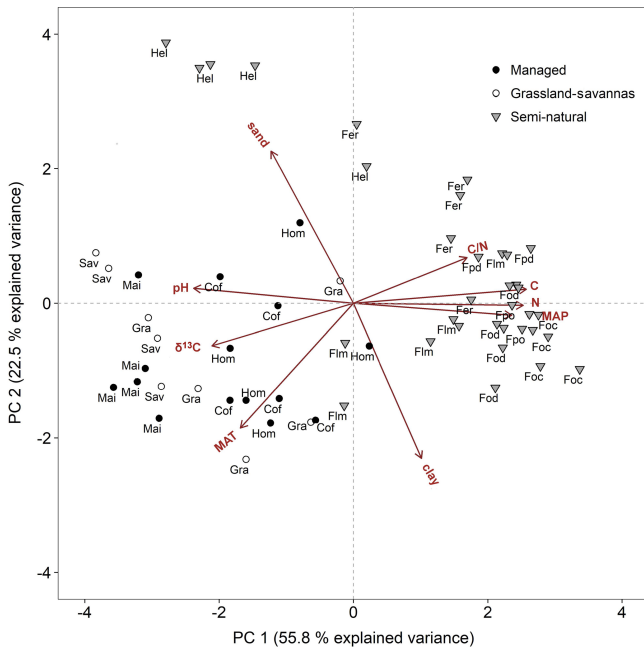


Figure 5. Principal component analysis bi-plot for soil and climate variables potentially controlling soil $\delta^{15}\text{N}$. Symbols are as per all previous figures. Acronyms are as per Table 1. C/N: soil C/N ratio, C: soil carbon content, N: soil nitrogen content, MAP: mean annual precipitation, clay: soil clay content, MAT: mean annual temperature, $\delta^{13}\text{C}$: soil $\delta^{13}\text{C}$, and pH: soil pH.

former is characterized by comparatively higher C/N ratios and lower $\delta^{15}\text{N}$ values (averaging 15.5‰ and 1.5‰, respectively), while the latter showed lower C/N ratios and higher soil $\delta^{15}\text{N}$ values (averaging 11.9‰ and 3.5‰, respectively). Managed ecosystems further grouped into intensively cropped (home gardens, maize fields, and coffee plantations) and extensively managed grass-dominated ecosystems (savannas and grasslands).

4 Discussion

4.1 Factors influencing the variation of $\delta^{13}\text{C}$ values along the elevational and land-use gradient

The $\delta^{13}\text{C}$ values of leaves in C_3 -dominated (semi-natural) ecosystems at Mount Kilimanjaro increased with elevation (Figs. 1 and S2), which is in agreement with findings from other mountainous ecosystems in the tropics, Europe, and North America (Bird et al., 1994; Körner et al., 1991; Ortiz et al., 2016; Zhou et al., 2011; Zhu et al., 2009). The wider scatter of $\delta^{13}\text{C}$ values observed in leaves relative to soils is most certainly due to the inherently large (interspecific and intraspecific) variability of $\delta^{13}\text{C}$ in plants (Bird et al., 1994). Different tissues within the plant can present widely divergent $\delta^{13}\text{C}$ values as a result of fractionation processes associated with the C compounds involved in their construc-

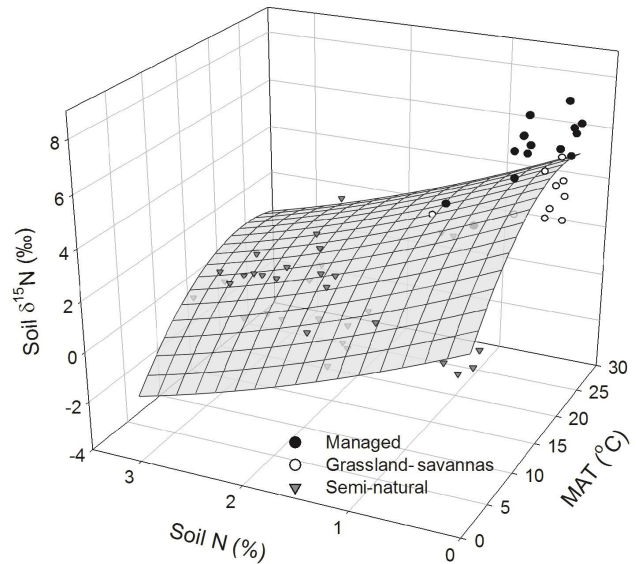


Figure 6. Measured and modelled soil $\delta^{15}\text{N}$ values predicted as a function of soil N abundance and mean annual temperature (MAT). Data points are classified by generic land uses (i.e. intensively managed cropping sites, extensively managed grassland and savannas, and semi-natural ecosystems) observed along the elevational and land-use gradient. The regression takes the following form: soil $\delta^{15}\text{N} = 1.10 + 0.49 (\text{MAT}) - 1.86 (\text{soil N}) - 0.01 (\text{MAT})^2 + 0.14 (\text{soil N})^2$; (r^2 adj = 0.68, $P < 0.05$, $n = 60$).

tion (Dawson et al., 2002). Moreover, other factors including light intensity, humidity, and the reutilization of previously respired low ^{13}C - CO_2 within the canopy may further contribute to the variability of $\delta^{13}\text{C}$ in leaf tissues (Ometto et al., 2006; van der Merwe and Medina, 1989).

While fractionation effects preclude a straightforward interpretation of $\delta^{13}\text{C}$ of SOM, this variable provides an integrated measure of the isotopic composition of the precursor biomass at the ecosystem level (Bird et al., 2004; Saiz et al., 2015a). Mass balance calculations that assume (i) 5% (w/w) average root mass (< 2 mm) in soil samples and (ii) leaves having similar isotopic signals as roots show that the removal of visible sieved roots might cause a very small effect on soil isotopic values. This would amount to values ~ 0.15 ‰ higher than the original soil isotopic values, with such discrepancy being even smaller if root samples were considered to have values 0.5‰–1‰ higher than leaves, as is commonly reported in the literature (calculations not shown). Besides the natural variability of soil $\delta^{13}\text{C}$ values observed in C_3 -dominated semi-natural ecosystems, there were distinct patterns in the $\delta^{13}\text{C}$ values of soil samples collected in extensively managed, low-elevation ecosystems where woody and grass vegetation coexist (i.e. grasslands and savannas), which indicates the strong influence exerted by C_4 vegetation on the C isotopic composition of all sampled materials (Fig. 2). The results obtained in semi-natural ecosystems at Mount Kilimanjaro fit well within the interpretative framework for ele-

variational soil $\delta^{13}\text{C}$ data proposed by Bird et al. (1994). These authors suggest that besides temperature and atmospheric pressure, other primary factors influencing soil $\delta^{13}\text{C}$ values are the age and degree of decomposition of SOM and variables related to the characteristics of the canopy, including the proportion of respired CO_2 that is recycled during photosynthesis, the relative contribution of leaf and woody litter to SOM, and soil moisture.

Besides the factors explained above, soil $\delta^{13}\text{C}$ values are strongly influenced by the balance between ecosystem C inputs and outputs. It seems reasonable to assume that in the case of natural ecosystems there may be a steady state between SOM inputs and decomposition rates. This should be in contrast with the typically altered nutrient dynamics of disturbed systems, particularly those under agricultural management (Wang et al., 2018). Low fractionation factors in $\delta^{13}\text{C}$ are commonly reported between plant material and topsoils in natural systems, mainly because of the relatively limited humification of recent organic matter prevalent in topsoils (Acton et al., 2013; Wang et al., 2018). Thus, we hypothesized that if C inputs and outputs were roughly in balance, then the difference in $\delta^{13}\text{C}$ values between plant material and topsoil would be smaller in undisturbed sites compared to managed or disturbed sites. The results shown in Fig. 3 agree well with this notion.

Soil $\delta^{13}\text{C}$ values decreased with increasing MAP and decreasing MAT, which also corresponded with higher SOC contents (Fig. S3). This suggests that the relatively cooler and wetter conditions of high-elevation semi-natural forest ecosystems (i.e. Foc, Fpo) promote the accumulation of SOM, which is similar to previous findings of work conducted along elevational gradients (Bird et al., 1994; Kohn, 2010). Compared to high-elevation locations, the climatic conditions of mid-elevation ecosystems are more favourable for the activities of SOM decomposers, as these sites are consistently warmer and drier than the characteristically cool and occasionally waterlogged high-altitude ecosystems (Fig. S1; Becker and Kuzyakov, 2018; Borken and Matzner, 2009; Garten et al., 2009; Kirschbaum, 1995; Leirós et al., 1999). The comparatively high soil $\delta^{13}\text{C}$ values observed in the disturbed *Podocarpus* (Fpd) and *Erica* forest (Fer) plots may have been partly caused by recurrent fire events (Hemp, 2005) leading to reduced SOC contents and higher C/N ratios (Saiz et al., 2015a). Further variations in soil $\delta^{13}\text{C}$ values could also be related to the biochemical composition of the precursor biomass. For instance, herbaceous vegetation is pervasive at high elevations and contains relatively low amounts of lignin – an organic compound characteristically depleted in ^{13}C (Benner et al., 1987). This may contribute to explaining the higher $\delta^{13}\text{C}$ values observed in plant and soil materials in alpine ecosystems dominated by *Helichrysum* vegetation compared to forest ecosystems at lower elevations (Fig. 2).

Elevation also has a strong influence on the seasonal litterfall dynamics observed in Mount Kilimanjaro and thus

may have significant implications in the SOM cycling across the various ecosystems. Becker et al. (2015) suggest that the large accumulation of particulate organic matter observed at the end of the dry season in low- and mid-altitude ecosystems may result in the increased mineralization of easily available substrates (Mganga and Kuzyakov, 2014) and nutrient leaching (Gütlein et al., 2018) during the following wet season. Agricultural practices such as the removal of biomass or ploughing deplete SOM, particularly in intensively managed systems (i.e. maize, home gardens, and coffee plantations), thus leading to lower SOC contents and C/N ratios and slightly higher soil $\delta^{13}\text{C}$ values than those observed in semi-natural ecosystems at comparable elevations (e.g. lower montane forests; Fig. S3). Indeed, the relationship between $\delta^{13}\text{C}$ enrichment factors and soil C/N ratios shown in Fig. 3 is quite informative regarding SOM dynamics. As previously mentioned, soil C/N ratios provide a good indication of SOM decomposition processes, typically showing comparatively low values in managed and disturbed systems. These correspond well with sites having large enrichment factors ($< -1.25\%$; i.e. intensively managed and disturbed sites), which agrees with the notion of altered SOM dynamics. Therefore, besides the systematic removal of plant biomass characteristic of agricultural systems, annual litterfall patterns may also explain the comparatively lower contents of C and N observed in the topsoils of intensively managed sites (Table 1; Figs. S3, S4). Moreover, low-elevation ecosystems contain a variable mixture of C_3 and C_4 vegetation, which have been shown to have differential mineralization dynamics as demonstrated by incubation experiments (Wynn and Bird, 2007) and field-based research (Saiz et al., 2015a).

Our data show strong relationships between temperature and variables directly related to SOM dynamics such as soil $\delta^{13}\text{C}$, C, N, and C/N ratios (Table S2). These results agree well with recent findings by Becker and Kuzyakov (2018), who studied SOM decomposition dynamics at these very sites. An important finding revealed by that study is seasonal variation in temperature being a major factor controlling litter decomposition. Their study shows that small seasonal variations in temperature observed at high-elevation sites exert a strong effect on litter decomposition rates. Therefore, the authors argue that the projected increase in surface temperature may result in potentially large soil C losses at these sites due to the comparatively strong temperature sensitivity to decomposition that is commonly observed at low temperatures and at high-elevation sites (Blagodatskaya et al., 2016).

Savannas and grasslands are subject to recurrent fire events, and thus the soils of these ecosystems may potentially contain significant amounts of fire-derived (pyrogenic) C (Saiz et al., 2015b). This can be partly demonstrated by the higher soil C/N ratios observed in these ecosystems compared to C_4 -dominated agricultural systems protected from fire (e.g. maize plantations; Fig. S3d). Moreover, the $\delta^{13}\text{C}$ values of soils in grasslands and savannas were lower than

those of leaves, which may be due to the savanna isotope disequilibrium effect (SIDE) (Bird and Pousai, 1997; Saiz et al., 2015b). The latter concept explains the difference in C isotopic composition between the precursor vegetation and pyrogenic C compounds produced during the combustion of biomass. Saiz et al. (2015b) have demonstrated that savanna fires produce pyrogenic C that is relatively ^{13}C depleted with respect to the precursor biomass. Furthermore, the combustion of C_4 vegetation produces finer pyrogenic C particles than woody biomass, resulting in the preferential export of grass-derived pyrogenic particles from the site of burning, which further enhances the depletion of ^{13}C in these soils (Saiz et al., 2018).

4.2 Variation of $\delta^{15}\text{N}$ values along the elevational and land-use gradient

The $\delta^{15}\text{N}$ values of leaves, litter, and topsoil presented here (Fig. 4a) agree well with the range of data reported from earlier investigations in the same study region (Amundson et al., 2003; Zech et al., 2011), but with our study involving more ecosystems, replicate sites, and a far larger spatial sampling domain. Overall, the $\delta^{15}\text{N}$ values for montane tropical forest ecosystems in Mount Kilimanjaro are considerably lower than the mean values reported for a broad variety of tropical lowland forests worldwide (soil values ranging from 3‰ to 14‰; de Freitas et al., 2015; Martinelli et al., 1999; Nardoto et al., 2014; Piccolo et al., 1996; Sotta et al., 2008). Rather, the $\delta^{15}\text{N}$ values observed in the montane forests investigated are in the same range of temperate forest ecosystems reported in a comprehensive literature review by Martinelli et al. (1999). These authors argue that, compared to tropical lowland forests, the lower $\delta^{15}\text{N}$ values of temperate and montane tropical forests result from their lower N availability and thus lower ecosystem N losses. However, this hypothesis may not completely hold for the montane forest ecosystems of our study, since Gütlein et al. (2018) reported elevated soil NO_3^- and DON concentrations at deep soil solution (80 cm) and significant nitrogen leaching rates of 10–15 kg N ha $^{-1}$ yr $^{-1}$. The relatively low $\delta^{15}\text{N}$ -based enrichment factors observed in the lower montane, *Ocotea*, and undisturbed *Podocarpus* forest (Fig. 4b) were probably due to the prevalence of biological dinitrogen fixation (BNF) at these ecosystems. The assumption of significant BNF is supported by leaf $\delta^{15}\text{N}$ values close to 0‰ (Fig. 4a) and is in line with previous works (Craine et al., 2015a; Nardoto et al., 2014; Robinson, 2001). Furthermore, sporadic measurements of N compounds in rainfall and throughfall conducted at our forest sites showed substantial input of N via atmospheric deposition, which may be of the order of N leaching losses (unpublished results). This agrees well with findings from Bauters et al. (2018) reporting 18 kg N ha $^{-1}$ yr $^{-1}$ N inputs via wet deposition into tropical forests of the Congo Basin, which are predominantly derived from biomass burning and long-range atmospheric transport. High N inputs

into these forest ecosystems are likely to be in a similar range as N outputs (prevalled by leaching losses, particularly where MAP is highest; Gütlein et al., 2018), and therefore they would not translate to strong effects on ecosystem $\delta^{15}\text{N}$ values. The significantly more negative enrichment factors observed in the disturbed *Podocarpus* and *Erica* forests (Fig. 4b) may be related to past fire events (Hemp, 2005; Zech et al., 2011). Burning of vegetation may cause losses of ^{15}N -depleted NO_x gas and N leachate, resulting in higher soil $\delta^{15}\text{N}$ values, thus producing variations in $\delta^{15}\text{N}$ -based enrichment factors (Zech et al., 2011).

Previous studies have shown that $\delta^{15}\text{N}$ values generally increase with land-use intensification (Martinelli et al., 1999; Stevenson et al., 2010), which corresponds well with the more positive $\delta^{15}\text{N}$ values observed in the intensively managed agricultural systems occurring at the mountain's foot slope (Fig. 4a). Indeed, agronomic practices such as fertilization, the removal of plant material after harvest, and ploughing are factors known to impact N turnover processes that strongly affect $\delta^{15}\text{N}$ values (Bedard-Haughn et al., 2003; Saiz et al., 2016). However, our values are in the lower range of published data for other land-use gradients (Araniibar et al., 2008; Eshetu and Högberg, 2000; Traoré et al., 2015) and may partly be the result of comparably low to moderate organic and inorganic N fertilization rates currently applied in the region (anecdotal evidence gathered by the authors and found in the Supplement). Additionally, the nitrogen isotopic signal of mineral fertilizers commonly used in the region is ~ 0 ‰ (Bateman and Kelly, 2007), and thus it may not exert a significant additional bias on the interpretation of soil $\delta^{15}\text{N}$ values. However, the addition of manure ($\delta^{15}\text{N} \sim 8$ ‰) in Hom systems, although used in low quantities (Gütlein et al., 2018), may well have contributed to the high $\delta^{15}\text{N}$ values observed in this ecosystem (Fig. 4). Also, we suggest that the use of pesticides may not pose a strong bias in our isotopic results since their use is limited to intensively managed sites, and the actual isotopic values of pesticides work in the opposite direction to the observed data (Fig. 4; Supplement).

Compared to other low-elevation managed stands such as home gardens and coffee plantations, the higher $\delta^{15}\text{N}$ -based enrichment factors observed in maize fields and in grass-dominated ecosystems (grasslands and savannas) (Fig. 4b) may be related to both the organic inputs resulting from grazing activities and the influence of C_4 vegetation. Both Araniibar et al. (2008) and Wang et al. (2010) have suggested that variations in $\delta^{15}\text{N}$ values within a given ecosystem could be due to C_3 and C_4 plants preferentially absorbing chemical forms of N with differing ^{15}N abundances. Moreover, recurrent fires characteristic of tropical grasslands and savannas may have also influenced their comparatively high soil $\delta^{15}\text{N}$, causing the relatively high $\delta^{15}\text{N}$ -based enrichment factors.

4.3 Factors controlling soil $\delta^{15}\text{N}$ along the elevational and land-use gradient

The strong controlling effects exerted by climatic and edaphic factors on soil $\delta^{15}\text{N}$ values agree well with numerous previous works (Amundson et al., 2003; Conen et al., 2013; Eshetu and Högberg, 2000; Martinelli et al., 1999; Stevenson et al., 2010). The principal component analysis of factors controlling soil $\delta^{15}\text{N}$ revealed a strong clustering between managed and semi-natural ecosystems (Fig. 5), which was also reflected in the multiple regression analysis and graphical representation depicting soil $\delta^{15}\text{N}$ as a function of soil N concentration and MAT (Fig. 6). Semi-natural ecosystems were characterized by relatively low soil $\delta^{15}\text{N}$ values and occurred across a broad range of soil N contents in locations with low to medium MAT. By contrast, intensively managed ecosystems had higher soil $\delta^{15}\text{N}$ values and corresponded to locations with low soil N contents and high MAT. The negative correlation of $\delta^{15}\text{N}$ values with soil nitrogen content and the positive correlation with mean annual temperature suggest reduced mineralization rates and thus limited nitrogen availability, at least in high-elevation ecosystems.

The sharp contrast observed both in soil C/N ratios and $\delta^{15}\text{N}$ values between managed and semi-natural ecosystems offers additional useful information about their potentially contrasting SOM dynamics (Fig. S4d). Intensively managed sites consistently showed low soil C/N ratios and high soil $\delta^{15}\text{N}$ values, which may initially suggest a more open N cycle and potentially greater N losses as reported by Gerschlauer et al. (2016) for some of these ecosystems. This may be due to the C limitation of heterotrophic microbial N retention under low C/N ratios (Butterbach-Bahl and Dannenmann, 2012). However, nitrate leaching is quite a relevant process that discriminates only slightly against ^{15}N (Denk et al., 2017), which may confound the interpretation of soil $\delta^{15}\text{N}$ values. Indeed, Gütlein et al. (2018) have recently shown that nitrate leaching may be quite significant in Mount Kilimanjaro's semi-natural forests. Therefore, at least in these ecosystems, claims about the nature of the N cycle (i.e. open or closed) should not be made solely on the basis of soil $\delta^{15}\text{N}$.

Grass-dominated ecosystems (grasslands and savannas) were noticeably different to the intensively managed croplands, as demonstrated by the higher soil C/N ratios and lower soil $\delta^{15}\text{N}$ of the former, which suggests a lower degree of decomposition of organic matter and potentially lower N turnover rates (Saiz et al., 2016). Within the intensively managed sites, the stands under maize cultivation show an interesting case of enhanced SOM dynamics. These sites are under an intensive management regime that involves the removal of aboveground vegetation after harvest. This fact combined with the faster decomposition rates reported for C₄-derived SOM (Saiz et al., 2015a, 2016; Wynn and Bird, 2007) may invariably lead to their characteristically low SOC and N contents (Table 1; Figs. S3, S4). Furthermore, low soil

C/N ratios have been reported to enhance gaseous losses in semi-arid systems, which leads to increased soil $\delta^{15}\text{N}$ values (Aranibar et al., 2004) and may explain why maize stands showed the highest soil $\delta^{15}\text{N}$ values of all the land uses studied.

Semi-natural ecosystems showed rather high soil C/N ratios and low soil $\delta^{15}\text{N}$ values compared to managed sites (Fig. S4d). The more humid and cooler conditions prevalent in forest ecosystems may limit decomposition processes, thereby contributing significantly to their higher SOM abundance (Table 1). A small variation range in soil $\delta^{15}\text{N}$ values was also reported by Zech et al. (2011) for semi-natural ecosystems (Foc and Fpo) when working along the same land-use and elevation gradient. Like us, these authors also observed a strong significant correlation of soil $\delta^{15}\text{N}$ with MAT, but not with MAP (Table S2). Additionally, site-specific soil characteristics and the structural composition of vegetation have a strong influence on ecosystem nutrient dynamics (Saiz et al., 2012, 2015a). Ecosystem disturbances (e.g. fire, selective logging, etc.) cause changes in vegetation cover that affect SOM cycling and may translate into variations in soil C/N ratios (Saiz et al., 2016). Both *Ocotea* and *Podocarpus* forests contain disturbed (Fod, Fpd) and undisturbed stands (Foc, Fpo), though only the *Podocarpus* ecosystems allow for a general overview of disturbance impacts on SOM-related properties. While changes in the isotopic composition of C and N were not significant, soil C/N ratios were heavily influenced by disturbance (Fig. S4). Compared to non-disturbed sites, the lower C and N contents observed in the soil of disturbed ecosystems indicate reduced OM inputs to the soil and/or enhanced decomposition of SOM (Table 1). The higher soil C/N ratios observed in the *Podocarpus* disturbed and *Erica* forests may well be the result of fire, which may preferentially promote N losses while accruing relatively recalcitrant C forms (i.e. pyrogenic C). Woody biomass combustion produces pyrogenic C that accumulates preferentially close to the site of production (Saiz et al., 2018), thus likely contributing to the higher soil C/N ratios observed at these disturbed ecosystems. The lowest soil C/N ratios among all semi-natural ecosystems were observed at the alpine *Helichrysum* sites, which may relate to their characteristically sparse vegetation and extremely low MAT. Under such circumstances, soil development, biomass inputs, decomposition processes, and thus soil N turnover may be strongly limited, as was confirmed by a recent study conducted at one of these sites (Gütlein et al., 2017).

5 Conclusions

The variations in $\delta^{13}\text{C}$ and $\delta^{15}\text{N}$ values combined with the interpretation of other indices, such as $\delta^{13}\text{C}$ - and $\delta^{15}\text{N}$ -based enrichment factors and soil C/N ratios, enabled a qualitative characterization of regional differences in C and N dynam-

ics as affected by vegetation characteristics, environmental conditions, and management activities.

Our data show that SOM contents are higher in cold and wet high-elevation ecosystems than at low-elevation managed sites. Management practices such as tillage, harvest, and vegetation burning promote the loss of OM, with SOM decomposition being further enhanced by the warm and moderately wet conditions of the mountain's foot slope. Based on our results, we suggest that besides management, increasing temperatures in a changing climate may promote C and N losses, thus altering the otherwise stable SOM dynamics of Mount Kilimanjaro's forest ecosystems. Moreover, the current situation of low N inputs in managed systems of sub-Saharan Africa is likely to change, since national efforts that aim to increase fertilizer use are currently at < 10 % of recommended rates (Hickman et al., 2014). Therefore, our data may also be valuable as a generic reference for low-elevation tropical agrosystems managed under low N inputs, while it may also allow for the monitoring of expected changes in agricultural management and associated impacts on the ecosystem N cycle through the study of variation in $\delta^{15}\text{N}$ values.

In addition to climatic and edaphic factors, $\delta^{15}\text{N}$ values of plant and soil material can largely depend on both the amount and $\delta^{15}\text{N}$ signal of atmospheric deposition and BNF, which highlights the importance of conducting additional measurements of site-specific N cycling when comparing ecosystem $\delta^{15}\text{N}$ values across different biomes and regions. The combination of qualitative isotope natural abundance studies at a large number of sites (this study) with more elaborated quantitative process studies using enriched isotope labelling and N losses on a lower number of selected sites represents an ideal approach to characterize the ecosystem C and N cycling of the larger Mount Kilimanjaro region with its diverse ecosystems, climate, and management.

Data availability. Research data can be requested and accessed through the following link: <https://www.kilimanjaro.biozentrum.uni-wuerzburg.de/Data/Data.aspx> (Gerschlauer and Kiese, 2016).

Supplement. The supplement related to this article is available online at: <https://doi.org/10.5194/bg-16-409-2019-supplement>.

Author contributions. FG contributed to design, performed the study, and co-wrote the paper; GS contributed to analyses and co-wrote the paper; DSC and MK provided plant samples and contributed to writing; MD contributed to writing; and RK designed the study and contributed to analyses and writing.

Competing interests. The authors declare that they have no conflict of interest.

Acknowledgements. This study was funded by the German Research Foundation (DFG: KI 1431/1-1 and KI 1431/1-2) within research unit 1246 (KiLi) and supported by the Tanzanian Commission for Science and Technology (COSTECH), the Tanzania Wildlife Research Institute (TAWIRI), and the Mount Kilimanjaro National Park (KINAPA). In addition, the authors thank Andreas Hemp for the selection and preparation of the research plots, Bernd Huwe for the correction of soil texture data, all local helpers in Tanzania, and the assistants in the laboratory of IMK-IFU in Germany. Technical support by the Center of Stable Isotopes at KIT/IMK-IFU is gratefully acknowledged. Further thanks go to the following persons from the KiLi project: Tim Appelhans and Thomas Nauss, Jie Zhang, Gemma Rutten, and Andreas Hemp for providing georeferenced points underlying the GeoTIFF in Fig. 1b. We also thank four anonymous reviewers and Jonathan Wynn for insightful comments on the paper.

The article processing charges for this open-access publication were covered by a Research Centre of the Helmholtz Association.

Edited by: Yakov Kuzyakov

Reviewed by: four anonymous referees

References

- Abaker, W. E., Berninger, F., Saiz, G., Braojos, V., and Starr, M.: Contribution of *Acacia senegal* to biomass and soil carbon in plantations of varying age in Sudan, *Forest Ecol. Manag.*, 368, 71–80, <https://doi.org/10.1016/j.foreco.2016.03.003>, 2016.
- Abaker, W. E., Berninger, F., Saiz, G., Pumpanen, J., and Starr, M.: Linkages between soil carbon, soil fertility and nitrogen fixation in *Acacia senegal* plantations of varying age in Sudan, *PeerJ*, 6, e5232, <https://doi.org/10.7717/peerj.5232>, 2018.
- Acton, P., Fox, J., Campbell, E., Rowe, H., and Wilkinson, M.: Carbon isotopes for estimating soil decomposition and physical mixing in well-drained forest soils, *J. Geophys. Res.-Biogeo.*, 118, 1532–1545, 2013.
- Amundson, R., Austin, A. T., Schuur, E. A. G., Yoo, K., Matzek, V., Kendall, C., Uebersax, A., Brenner, D., and Baisden, W. T.: Global patterns of the isotopic composition of soil and plant nitrogen, *Global Biogeochem. Cy.*, 17, 1031, <https://doi.org/10.1029/2002GB001903>, 2003.
- Appelhans, T., Mwangomo, E., Otte, I., Detsch, F., Nauss, T., and Hemp, A.: Eco-meteorological characteristics of the southern slopes of Kilimanjaro, Tanzania, *Int. J. Climatol.*, 36, 3245–3258, <https://doi.org/10.1002/joc.4552>, 2016.
- Aranibar, J. N., Otter, L., Macko, S. A., Feral, C. J., Epstein, H. E., Dowty, P. R., Eckardt, F., Shugart, H. H., and Swap, R. J.: Nitrogen cycling in the soil–plant system along a precipitation gradient in the Kalahari sands, *Glob. Change Biol.*, 10, 359–373, <https://doi.org/10.1111/j.1365-2486.2003.00698.x>, 2004.
- Aranibar, J. N., Anderson, I. C., Epstein, H. E., Feral, C. J. W., Swap, R. J., Ramontsho, J., and Macko, S. A.: Nitrogen isotope composition of soils, C_3 and C_4 plants along land use gradients in southern Africa, *J. Arid Environ.*, 72, 326–337, <https://doi.org/10.1016/j.jaridenv.2007.06.007>, 2008.

- Bai, E., Houlton, B. Z., and Wang, Y. P.: Isotopic identification of nitrogen hotspots across natural terrestrial ecosystems, *Biogeosciences*, 9, 3287–3304, <https://doi.org/10.5194/bg-9-3287-2012>, 2012.
- Bateman, A. S. and Kelly, S. D.: Fertilizer nitrogen isotope signatures, *Isot. Environ. Heal. S.*, 43, 237–247, 2007.
- Bauters, M., Drake, T. W., Verbeeck, H., Bodé, S., Hervé-Fernández, P., Zito, P., Podgorski, D. C., Boyemba, F., Makelele, I., Ntaboba, L. C., Spencer, R. G. M., and Boeckx, P.: High fire-derived nitrogen deposition on central African forests, *P. Natl. Acad. Sci. USA*, 115, 549–554, <https://doi.org/10.1073/pnas.1714597115>, 2018.
- Becker, J., Pabst, H., Mnyonga, J., and Kuzyakov, Y.: Annual litterfall dynamics and nutrient deposition depending on elevation and land use at Mt. Kilimanjaro, *Biogeosciences*, 12, 5635–5646, <https://doi.org/10.5194/bg-12-5635-2015>, 2015.
- Becker, J. N. and Kuzyakov, Y.: Teatime on Mount Kilimanjaro: Assessing climate and land-use effects on litter decomposition and stabilization using the Tea Bag Index, *Land Degrad. Dev.*, 29, 2321–2329, 2018.
- Bedard-Haughn, A., van Groenigen, J. W., and van Kessel, C.: Tracing ^{15}N through landscapes: potential uses and precautions, *J. Hydrol.*, 272, 175–190, [https://doi.org/10.1016/S0022-1694\(02\)00263-9](https://doi.org/10.1016/S0022-1694(02)00263-9), 2003.
- Benner, R., Fogel, M. L., Sprague, E. K., and Hodson, R. E.: Depletion of ^{13}C in lignin and its implications for stable carbon isotope studies, *Nature*, 329, 708–710, <https://doi.org/10.1038/329708a0>, 1987.
- Bird, M. I., Haberle, S. G., and Chivas, A. R.: Effect of altitude on the carbon-isotope composition of forest and grassland soils from Papua New Guinea, *Global Biogeochem. Cy.*, 8, 13–22, <https://doi.org/10.1029/93GB03487>, 1994.
- Bird, M. I. and Pousai, P.: Variations of $\delta^{13}\text{C}$ in the surface soil organic carbon pool, *Global Biogeochem. Cy.*, 11, 313–322, <https://doi.org/10.1029/97GB01197>, 1997.
- Bird, M. I., Veenendaal, E. M., and Lloyd, J. J.: Soil carbon inventories and $\delta^{13}\text{C}$ along a moisture gradient in Botswana, *Glob. Change Biol.*, 10, 342–349, <https://doi.org/10.1046/j.1365-2486.2003.00695.x>, 2004.
- Blagodatskaya, E., Blagodatsky, S., Khomyakov, N., Myachina, O., and Kuzyakov, Y.: Temperature sensitivity and enzymatic mechanisms of soil organic matter decomposition along an altitudinal gradient on Mount Kilimanjaro, *Sci. Rep.-UK*, 6, 22240, <https://doi.org/10.1038/srep22240>, 2016.
- Booth, M. S., Stark, J. M., and Rastetter, E.: Controls on Nitrogen Cycling in Terrestrial Ecosystems: A Synthetic Analysis of Literature Data, *Ecol. Monogr.*, 75, 139–157, <https://doi.org/10.1890/04-0988>, 2005.
- Borken, W. and Matzner, E.: Reappraisal of drying and wetting effects on C and N mineralization and fluxes in soils, *Glob. Change Biol.*, 15, 808–824, <https://doi.org/10.1111/j.1365-2486.2008.01681.x>, 2009.
- Butterbach-Bahl, K. and Dannenmann, M.: Soil Carbon and Nitrogen Interactions and Biosphere-Atmosphere Exchange of Nitrous Oxide and Methane, in: *Recarbonization of the Biosphere*, edited by: Lal, R., Lorenz, K., Hüttl, R. F., Schneider, B. U., and von Brau, J., Springer, the Netherlands, 429–443, 2012.
- Cernusak, L. A., Ubierna, N., Winter, K., Holtum, J. A. M., Marshall, J. D., and Farquhar, G. D.: Environmental and physiological determinants of carbon isotope discrimination in terrestrial plants, *New Phytol.*, 200, 950–965, <https://doi.org/10.1111/nph.12423>, 2013.
- Conen, F., Yakutin, M. V., Carle, N., and Alewell, C.: $\delta^{15}\text{N}$ natural abundance may directly disclose perturbed soil when related to C:N ratio, *Rapid Commun. Mass Sp.*, 27, 1101–1104, <https://doi.org/10.1002/rcm.6552>, 2013.
- Craine, J. M., Brookshire, E. N. J., Cramer, M. D., Hasselquist, N. J., Koba, K., Marin-Spiotta, E., and Wang, L.: Ecological interpretations of nitrogen isotope ratios of terrestrial plants and soils, *Plant Soil*, 396, 1–26, <https://doi.org/10.1007/s11104-015-2542-1>, 2015a.
- Craine, J. M., Elmore, A. J., Wang, L., Augusto, L., Baisden, W. T., Brookshire, E. N. J., Cramer, M. D., Hasselquist, N. J., Hobbie, E. A., Kahmen, A., Koba, K., Kranabetter, J. M., Mack, M. C., Marin-Spiotta, E., Mayor, J. R., McLauchlan, K. K., Michelsen, A., Nardoto, G. B., Oliveira, R. S., Perakis, S. S., Peri, P. L., Quesada, C. A., Richter, A., Schipper, L. A., Stevenson, B. A., Turner, B. L., Viani, R. A. G., Wanek, W., and Zeller, B.: Convergence of soil nitrogen isotopes across global climate gradients, *Sci. Rep.-UK*, 5, 8280, <https://doi.org/10.1038/srep08280>, 2015b.
- Dawson, T. E., Mambelli, S., Plamboeck, A. H., Templer, P. H., and Tu, K. P.: Stable Isotopes in Plant Ecology, *Annu. Rev. Ecol. Syst.*, 33, 507–559, <https://doi.org/10.1146/annurev.ecolsys.33.020602.095451>, 2002.
- de Freitas, A. D. S., de Sá Barretto Sampaio, E. V., de Souza Ramos, A. P., de Vasconcellos Barbosa, M. R., Lyra, R. P., and Araújo, E. L.: Nitrogen isotopic patterns in tropical forests along a rainfall gradient in Northeast Brazil, *Plant Soil*, 391, 109–122, <https://doi.org/10.1007/s11104-015-2417-5>, 2015.
- Denk, T. R. A., Mohn, J., Decock, C., Lewicka-Szczepak, D., Harris, E., Butterbach-Bahl, K., Kiese, R., and Wolf, B.: The nitrogen cycle: A review of isotope effects and isotope modeling approaches, *Soil Biol. Biochem.*, 105, 121–137, <https://doi.org/10.1016/j.soilbio.2016.11.015>, 2017.
- Duane, W., Pepin, N., Losleben, M., and Hardy, D.: General Characteristics of Temperature and Humidity Variability on Kilimanjaro, Tanzania, *Arct. Antarct. Alp. Res.*, 40, 323–334, 2008.
- Ensslin, A., Rütten, G., Pommer, U., Zimmermann, R., Hemp, A., and Fischer, M.: Effects of elevation and land use on the biomass of trees, shrubs and herbs at Mount Kilimanjaro, *Ecosphere*, 6, 1–15, <https://doi.org/10.1890/ES14-00492.1>, 2015.
- Eshetu, Z. and Högberg, P.: Effects of land use on ^{15}N natural abundance of soils in Ethiopian highlands, *Plant Soil*, 222, 109–117, 2000.
- FAO and JRC: Global forest land-use change 1990–2005, in: *FAO Forestry Paper No. 16*, edited by: Lindquist, E. J., D’Annunzio, R., Gerrand, A., MacDicken, K., Achard, F., Beuchle, R., Brink, A., Eva, H. D., Mayaux, P., San-Miguel-Ayanz, J., and Stibig, H.-J., Food and Agriculture Organization of the United Nations and European Commission Joint Research Centre, Rome, FAO, 2012.
- Farquhar, G. D. and Sharkey, T. D.: Stomatal Conductance and Photosynthesis, *Annu. Rev. Plant Phys.*, 33, 317–345, <https://doi.org/10.1146/annurev.pp.33.060182.001533>, 1982.
- Farquhar, G. D., von Caemmerer, S., and Berry, J. A.: A biochemical model of photosynthetic CO_2 assim-

- ilation in leaves of C₃ species, *Planta*, 149, 78–90, <https://doi.org/10.1007/BF00386231>, 1980.
- Garten, J. C., Hanson, P., Todd, J. D., Lu, B., and Brice, D.: Natural ¹⁵N and ¹³C abundance as indicators of forest N status and soil C dynamics, in: *Stable Isotopes in Ecology and Environmental Science*, second ed., edited by: Michener, R., Lajtha, K., Blackwell Science, Oxford, 61–82, 2008.
- Garten, C. T., Classen, A. T., and Norby, R. J.: Soil moisture surpasses elevated CO₂ and temperature as a control on soil carbon dynamics in a multi-factor climate change experiment, *Plant Soil*, 319, 85–94, <https://doi.org/10.1007/s11104-008-9851-6>, 2009.
- Gerschlauer, F. and Kiese, R.: SP3_d15N/d13C natural abundance, TN, and SOC, <https://www.kilimanjaro.biozentrum.uni-wuerzburg.de/Data/Data.aspx>, last access: 31 August 2016.
- Gerschlauer, F., Dannenmann, M., Kühnel, A., Meier, R., Kolar, A., Butterbach-Bahl, K., and Kiese, R.: Gross Nitrogen Turnover of Natural and Managed Tropical Ecosystems at Mt. Kilimanjaro, Tanzania, *Ecosystems*, 19, 1–18, <https://doi.org/10.1007/s10021-016-0001-3>, 2016.
- Gruber, N. and Galloway, J. N.: An Earth-system perspective of the global nitrogen cycle, *Nature*, 451, 293–296, <https://doi.org/10.1038/nature06592>, 2008.
- Gütlein, A., Zistl-Schlingmann, M., Becker, J. N., Cornejo, N. S., Detsch, F., Dannenmann, M., Appelhans, T., Hertel, D., Kuzyakov, Y., and Kiese, R.: Nitrogen turnover and greenhouse gas emissions in a tropical alpine ecosystem, Mt. Kilimanjaro, Tanzania, *Plant Soil*, 411, 243–259, <https://doi.org/10.1007/s11104-016-3029-4>, 2017.
- Gütlein, A., Gerschlauer, F., Kikoti, I., and Kiese, R.: Impacts of climate and land use on N₂O and CH₄ fluxes from tropical ecosystems in the Mt. Kilimanjaro region, Tanzania, *Glob. Change Biol.*, 24, 1239–1255, <https://doi.org/10.1111/gcb.13944>, 2018.
- Hedin, L. O., Brookshire, E. N. J., Menge, D. N. L., and Barron, A. R.: The Nitrogen Paradox in Tropical Forest Ecosystems, *Annu. Rev. Ecol. Evol. S.*, 40, 613–635, <https://doi.org/10.1146/annurev.ecolsys.37.091305.110246>, 2009.
- Hemp, A.: Climate change-driven forest fires marginalize the impact of ice cap wasting on Kilimanjaro, *Glob. Change Biol.*, 11, 1013–1023, <https://doi.org/10.1111/j.1365-2486.2005.00968.x>, 2005.
- Hickman, J. E., Palm, C. A., Mutuo, P., Melillo, J. M., and Tang, J.: Nitrous oxide (N₂O) emissions in response to increasing fertilizer addition in maize (*Zea mays* L.) agriculture in western Kenya, *Nutr. Cycl. Agroecosys.*, 100, 177–187, <https://doi.org/10.1007/s10705-014-9636-7>, 2014.
- Högberg, P.: ¹⁵N natural abundance in soil-plant systems, *Tansley Review No. 95*, *New Phytol.*, 137, 179–203, <https://doi.org/10.1046/j.1469-8137.1997.00808.x>, 1997.
- Houlton, B. Z. and Bai, E.: Imprint of denitrifying bacteria on the global terrestrial biosphere, *P. Natl. Acad. Sci. USA*, 106, 21713–21716, <https://doi.org/10.1073/pnas.0912111106>, 2009.
- Kirschbaum, M. U. F.: The temperature dependence of soil organic matter decomposition, and the effect of global warming on soil organic C storage, *Soil Biol. Biochem.*, 27, 753–760, [https://doi.org/10.1016/0038-0717\(94\)00242-S](https://doi.org/10.1016/0038-0717(94)00242-S), 1995.
- Kohn, M. J.: Carbon isotope compositions of terrestrial C₃ plants as indicators of (paleo)ecology and (paleo)climate, *P. Natl. Acad. Sci. USA*, 107, 19691–19695, <https://doi.org/10.1073/pnas.1004933107>, 2010.
- Körner, C., Farquhar, G. D., and Wong, S. C.: Carbon Isotope Discrimination by Plants Follows Latitudinal and Altitudinal Trends, *Oecologia*, 88, 30–40, 1991.
- Leirós, M. C., Trasar-Cepeda, C., Seoane, S., and Gil-Sotres, F.: Dependence of mineralization of soil organic matter on temperature and moisture, *Soil Biol. Biochem.*, 31, 327–335, [https://doi.org/10.1016/S0038-0717\(98\)00129-1](https://doi.org/10.1016/S0038-0717(98)00129-1), 1999.
- Lewis, S. L., Lloyd, J., Sitch, S., Mitchard, E. T. A., and Laurance, W. F.: Changing Ecology of Tropical Forests: Evidence and Drivers, *Annu. Rev. Ecol. Evol. S.*, 40, 529–549, <https://doi.org/10.1146/annurev.ecolsys.39.110707.173345>, 2009.
- Ma, J.-Y., Sun, W., Liu, X.-N., and Chen, F.-H.: Variation in the Stable Carbon and Nitrogen Isotope Composition of Plants and Soil along a Precipitation Gradient in Northern China, *PLOS ONE*, 7, e51894, <https://doi.org/10.1371/journal.pone.0051894>, 2012.
- Majule, A. E.: Impacts of Land Use/Land Cover Changes on Soil Degradation and Biodiversity on the Slopes of Mount Kilimanjaro, Tanzania, LUCID Project, International Livestock Research Institute, 2003.
- Mariotti, A., Germon, J. C., Hubert, P., Kaiser, P., Letolle, R., Tardieux, A., and Tardieux, P.: Experimental determination of nitrogen kinetic isotope fractionation: some principles; illustration for the denitrification and nitrification processes, *Plant Soil*, 62, 413–430, 1981.
- Martinelli, L. A., Piccolo, M. C., Townsend, A. R., Vitousek, P. M., Cuevas, E., McDowell, W., Robertson, G. P., Santos, O. C., and Treseder, K.: Nitrogen stable isotopic composition of leaves and soil: Tropical versus temperate forests, *Biogeochemistry*, 46, 45–65, <https://doi.org/10.1007/BF01007573>, 1999.
- Mganga, K. Z. and Kuzyakov, Y.: Glucose decomposition and its incorporation into soil microbial biomass depending on land use in Mt. Kilimanjaro ecosystems, *Eur. J. Soil Biol.*, 62, 74–82, 2014.
- Michener, R. H. and Lajtha, K. (Eds.): *Stable isotopes in ecology and environmental science*, 2nd ed., Ecological methods and concepts series, Blackwell Pub, Malden, MA, 2007.
- Nardoto, G. B., Quesada, C. A., Patiño, S., Saiz, G., Baker, T. R., Schwarz, M., Schrodt, F., Feldpausch, T. R., Domingues, T. F., Marimon, B. S., Junior, B.-H. M., Vieira, I. C. G., Silveira, M., Bird, M. I., Phillips, O. L., Lloyd, J., and Martinelli, L. A.: Basin-wide variations in Amazon forest nitrogen-cycling characteristics as inferred from plant and soil ¹⁵N : ¹⁴N measurements, *Plant Ecol. Divers.*, 7, 173–187, <https://doi.org/10.1080/17550874.2013.807524>, 2014.
- Ometto, J. P. H. B., Ehleringer, J. R., Domingues, T. F., Berry, J. A., Ishida, F. Y., Mazzi, E., Higuchi, N., Flanagan, L. B., Nardoto, G. B., and Martinelli, L. A.: The stable carbon and nitrogen isotopic composition of vegetation in tropical forests of the Amazon Basin, Brazil, *Biogeochemistry*, 79, 251–274, <https://doi.org/10.1007/s10533-006-9008-8>, 2006.
- Ortiz, C., Vázquez, E., Rubio, A., Benito, M., Schindlbacher, A., Jandl, R., Butterbach-Bahl, K., and Díaz-Pinés, E.: Soil organic matter dynamics after afforestation of mountain grasslands in both a Mediterranean and a temperate climate, *Biogeochemistry*, 131, 267–280, <https://doi.org/10.1007/s10533-016-0278-5>, 2016.

- Pan, Y., Birdsey, R. A., Fang, J., Houghton, R., Kauppi, P. E., Kurz, W. A., Phillips, O. L., Shvidenko, A., Lewis, S. L., Canadell, J. G., Ciais, P., Jackson, R. B., Pacala, S. W., McGuire, A. D., Piao, S., Rautiainen, A., Sitch, S., and Hayes, D.: A Large and Persistent Carbon Sink in the World's Forests, *Science*, 333, 988–993, <https://doi.org/10.1126/science.1201609>, 2011.
- Panettieri, M., Rumpel, C., Dignac, M. F., and Chabbi, A.: Does grassland introduction into cropping cycles affect carbon dynamics through changes of allocation of soil organic matter within aggregate fractions?, *Sci. Total Environ.*, 576, 251–263, 2017.
- Pardo, L. H. and Nadelhoffer, K. J.: Using Nitrogen Isotope Ratios to Assess Terrestrial Ecosystems at Regional and Global Scales, in: *Isoscapes*, edited by: West, J. B., Bowen, G. J., Dawson, T. E., and Tu, K. P., Springer, the Netherlands, Dordrecht, 221–249, 2010.
- Peterson, B. J. and Fry, B.: Stable Isotopes in Ecosystem Studies, *Annu. Rev. Ecol. Syst.*, 18, 293–320, <https://doi.org/10.1146/annurev.es.18.110187.001453>, 1987.
- Piccolo, M. C., Neill, C., Melillo, J. M., Cerri, C. C., and Steudler, P. A.: ^{15}N natural abundance in forest and pasture soils of the Brazilian Amazon Basin, *Plant Soil*, 182, 249–258, <https://doi.org/10.1007/BF00029056>, 1996.
- R Core Team: R: A language and environment for statistical computing, R Foundation for Statistical Computing, Vienna, Austria, 2015.
- Robinson, D.: $\delta^{15}\text{N}$ as an integrator of the nitrogen cycle, *Trends Ecol. Evol.*, 16, 153–162, [https://doi.org/10.1016/S0169-5347\(00\)02098-X](https://doi.org/10.1016/S0169-5347(00)02098-X), 2001.
- Saiz, G. and Albrecht, A.: Methods for smallholder quantification of soil carbon stocks and stock changes, in: *Measurement methods Standard Assessment Of Agricultural Mitigation Potential And Livelihoods (SAMPLES)*, edited by: Rosenstock, T. S., Rufino, M. C., Butterbach-Bahl, K., Wollenberg, E., and Richards, M., ISBN 978-3-319-29792-7, CGIAR Research Program on Climate Change, Agriculture and Food Security, 135–162, 2016.
- Saiz, G., Bird, M., Domingues, T., Schrod, F., Schwarz, M., Feldpausch, T., Veenendaal, E., Djangbletey, G., Hien, F., Compaore, H., Diallo, A., and Lloyd, J.: Variation in soil carbon stocks and their determinants across a precipitation gradient in West Africa, *Glob. Change Biol.*, 18, 1670–1683, <https://doi.org/10.1111/j.1365-2486.2012.02657.x>, 2012.
- Saiz, G., Bird, M., Wurster, C., Quesada, C. A., Ascough, P., Domingues, T., Schrod, F., Schwarz, M., Feldpausch, T. R., Veenendaal, E., Djangbletey, G., Jacobsen, G., Hien, F., Compaore, H., Diallo, A., and Lloyd, J.: The influence of C_3 and C_4 vegetation on soil organic matter dynamics in contrasting semi-natural tropical ecosystems, *Biogeosciences*, 12, 5041–5059, <https://doi.org/10.5194/bg-12-5041-2015>, 2015a.
- Saiz, G., Wynn, J. G., Wurster, C. M., Goodrick, I., Nelson, P. N., and Bird, M. I.: Pyrogenic carbon from tropical savanna burning: production and stable isotope composition, *Biogeosciences*, 12, 1849–1863, <https://doi.org/10.5194/bg-12-1849-2015>, 2015b.
- Saiz, G., Wandera, F. M., Pelster, D. E., Ngetich, W., Okalebo, J. R., Rufino, M. C., and Butterbach-Bahl, K.: Long-term assessment of soil and water conservation measures (Fanya-juu terraces) on soil organic matter in South Eastern Kenya, *Geoderma*, 274, 1–9, <https://doi.org/10.1016/j.geoderma.2016.03.022>, 2016.
- Saiz, G., Goodrick, I., Wurster, C., Nelson, P. N., Wynn, J., and Bird, M.: Preferential Production and Transport of Grass-Derived Pyrogenic Carbon in NE-Australian Savanna Ecosystems, *Front. Earth Sci.*, 5, 115, <https://doi.org/10.3389/feart.2017.00115>, 2018.
- Schellenberger Costa, D., Gerschlauser, F., Pabst, H., Kühnel, A., Huwe, B., Kiese, R., Kuzyakov, Y., Kleyer, M., and Kühn, I.: Community-weighted means and functional dispersion of plant functional traits along environmental gradients on Mount Kilimanjaro, *J. Veg. Sci.*, 28, 684–695, <https://doi.org/10.1111/jvs.12542>, 2017.
- Smith, P., Clark, H., Dong, H., Elsiddig, E.A., Haberl, H., Harper, R., House, J., Jafari, M., Masera, O., Mbow, C., Ravindranath, N. H., Rice, C. W., Roble do Abad, C., Romanovskaya, A., Sperling, F., and Tubiello, F.: Chapter 11 – Agriculture, forestry and other land use (AFOLU), in: *Climate Change 2014: Mitigation of Climate Change*, IPCC Working Group III Contribution to AR5, Cambridge University Press, 2014.
- Soini, E.: Land use change patterns and livelihood dynamics on the slopes of Mt. Kilimanjaro, Tanzania, *Agric. Syst.*, 85, 306–323, <https://doi.org/10.1016/j.agsy.2005.06.013>, 2005.
- Sotta, E. D., Corre, M. D., and Veldkamp, E.: Differing N status and N retention processes of soils under old-growth lowland forest in Eastern Amazonia, Caxiuanã, Brazil, *Soil Biol. Biochem.*, 40, 740–750, <https://doi.org/10.1016/j.soilbio.2007.10.009>, 2008.
- Stevenson, B. A., Parfitt, R. L., Schipper, L. A., Baisden, W. T., and Mudge, P.: Relationship between soil $\delta^{15}\text{N}$, C/N and N losses across land uses in New Zealand, *Agr. Ecosyst. Environ.*, 139, 736–741, <https://doi.org/10.1016/j.agee.2010.10.020>, 2010.
- Swap, R. J., Aranibar, J. N., Dowty, P. R., Gilhooly, W. P., and Macko, S. A.: Natural abundance of ^{13}C and ^{15}N in C_3 and C_4 vegetation of southern Africa: patterns and implications, *Glob. Change Biol.*, 10, 350–358, <https://doi.org/10.1111/j.1365-2486.2003.00702.x>, 2004.
- Tieszen, L. L., Senyimba, M. M., Imbamba, S. K., and Troughton, J. H.: The distribution of C_3 and C_4 grasses and carbon isotope discrimination along an altitudinal and moisture gradient in Kenya, *Oecologia*, 37, 337–350, <https://doi.org/10.1007/BF00347910>, 1979.
- Townsend, A. R., Cleveland, C. C., Houlton, B. Z., Alden, C. B., and White, J. W.: Multi-element regulation of the tropical forest carbon cycle, *Front. Ecol. Environ.*, 9, 9–17, <https://doi.org/10.1890/100047>, 2011.
- Traoré, S., Ouattara, K., Ilstedt, U., Schmidt, M., Thiombiano, A., Malmer, A., and Nyberg, G.: Effect of land degradation on carbon and nitrogen pools in two soil types of a semi-arid landscape in West Africa, *Geoderma*, 241–242, 330–338, <https://doi.org/10.1016/j.geoderma.2014.11.027>, 2015.
- van der Merwe, N. J. and Medina, E.: Photosynthesis and $^{13}\text{C}/^{12}\text{C}$ ratios in Amazonian rain forests, *Geochim. Cosmochim. Ac.*, 53, 1091–1094, [https://doi.org/10.1016/0016-7037\(89\)90213-5](https://doi.org/10.1016/0016-7037(89)90213-5), 1989.
- van Reeuwijk, L. (Ed.): *Procedures for Soil Analysis 9*, Technical Paper, International Soil Reference and Information Centre, Wageningen, 2002.
- Vitousek, P. M.: Litterfall, Nutrient Cycling, and Nutrient Limitation in Tropical Forests, *Ecology*, 65, 285–298, <https://doi.org/10.2307/1939481>, 1984.
- Wang, C., Houlton, B. Z., Liu, D., Hou, J., Cheng, W., and Bai, E.: Stable isotopic constraints on global soil organic carbon turnover,

- Biogeosciences, 15, 987–995, <https://doi.org/10.5194/bg-15-987-2018>, 2018.
- Wang, L., D’Odorico, P., Ries, L., and Macko, S. A.: Patterns and implications of plant-soil $\delta^{13}\text{C}$ and $\delta^{15}\text{N}$ values in African savanna ecosystems, *Quaternary Res.*, 73, 77–83, <https://doi.org/10.1016/j.yqres.2008.11.004>, 2010.
- Wynn, J. G. and Bird, M. I.: C_4 -derived soil organic carbon decomposes faster than its C_3 counterpart in mixed C_3/C_4 soils, *Glob. Change Biol.*, 13, 2206–2217, <https://doi.org/10.1111/j.1365-2486.2007.01435.x>, 2007.
- Zaehle, S.: Terrestrial nitrogen–carbon cycle interactions at the global scale, *Philos. T. R. Soc. B*, 368, 20130125, <https://doi.org/10.1098/rstb.2013.0125>, 2013.
- Zech, M., Bimüller, C., Hemp, A., Samimi, C., Broesike, C., Hörold, C., and Zech, W.: Human and climate impact on ^{15}N natural abundance of plants and soils in high-mountain ecosystems: a short review and two examples from the Eastern Pamirs and Mt. Kilimanjaro, *Isotopes Environ. Health Stud.*, 47, 286–296, <https://doi.org/10.1080/10256016.2011.596277>, 2011.
- Zhou, Y., Fan, J., Zhang, W., Harris, W., Zhong, H., Hu, Z., and Song, L.: Factors influencing altitudinal patterns of C_3 plant foliar carbon isotope composition of grasslands on the Qinghai-Tibet Plateau, China, *Alpine Bot.*, 121, 79, <https://doi.org/10.1007/s00035-011-0093-5>, 2011.
- Zhu, Y., Jiang, Y., Liu, Q., Kang, M., Spehn, E. M., and Körner, C.: Elevational Trends of Biodiversity and Plant Traits Do Not Converge – A Test in the Helan Range, NW China, *Plant Ecol.*, 205, 273–283, 2009.