



Identification of the GRAS gene family in the *Brassica juncea* genome provides insight into its role in stem swelling in stem mustard

Mengyao Li*, Bo Sun*, Fangjie Xie, Ronggao Gong, Ya Luo, Fen Zhang, Zesheng Yan and Haoru Tang

College of Horticulture, Sichuan Agricultural University, Chengdu, China

*These authors contributed equally to this work.

ABSTRACT

GRAS transcription factors are known to play important roles in plant signal transduction and development. A comprehensive study was conducted to explore the GRAS family in the *Brassica juncea* genome. A total of 88 GRAS genes were identified which were categorized into nine groups according to the phylogenetic analysis. Gene structure analysis showed a high group-specificity, which corroborated the gene grouping results. The chromosome distribution and sequence analysis suggested that gene duplication events are vital for the expansion of GRAS genes in the *B. juncea* genome. The changes in evolution rates and amino acid properties among groups might be responsible for their functional divergence. Interaction networks and *cis*-regulatory elements were analyzed including DELLA and eight interaction proteins (including four GID1, two SLY1, and two PIF3 proteins) that are primarily involved in light and hormone signaling. To understand their regulatory role in growth and development, the expression profiles of BjuGRASs and interaction genes were examined based on transcriptome data and qRT-PCR, and selected genes (*BjuGRAS3*, 5, 7, 8, 10, *BjuB006276*, *BjuB037910*, and *BjuA021658*) had distinct temporal expression patterns during stem swelling, indicating that they possessed diverse regulatory functions during the developmental process. These results contribute to our understanding on the GRAS gene family and provide the basis for further investigations on the evolution and functional characterization of GRAS genes.

Submitted 20 September 2018

Accepted 12 February 2019

Published 1 April 2019

Corresponding author

Haoru Tang, htang@sicau.edu.cn

Academic editor

Gerard Lazo

Additional Information and
Declarations can be found on
page 17

DOI 10.7717/peerj.6682

© Copyright
2019 Li et al.

Distributed under
Creative Commons CC-BY 4.0

OPEN ACCESS

Subjects Agricultural Science, Bioinformatics, Genomics, Plant Science

Keywords GRAS transcription factor, Genome-wide, *Brassica juncea*, Stem swelling, Expression profile

INTRODUCTION

Transcription factors are known as master genes that bind to the promoter of target genes to activate or repress their expression. Investigating plant transcription factors is an important part of functional genomics research that helps us to understand the regulatory network of various biological processes. GRAS is a superfamily of transcription factors unique to plants and was named after the first three members: GAI, RGA and SCR (*Bolle, 2004*). Typically, GRAS proteins have a variable N-terminus and a highly conserved C-terminus

composed of five structural features: LHR I, VHIID, LHR II, PFYRE, and SAW (Pysh *et al.*, 1999). Based on the sequence, structure and phylogenetic relationships, the rice and *Arabidopsis* GRASs are divided into eight groups, including LISCL, PAT1, SCL3, DELLA, SCR, SHR, LS and HAM (Tian *et al.*, 2004). However, as more GRAS genes are identified, the classification of GRASs in different species is slightly altered. For instance, GRAS proteins are divided into at least 13 groups in the tea plant (Wang *et al.*, 2018) and nine groups in the sacred lotus (Wang *et al.*, 2016).

Genome-wide exploration of the GRAS gene family has been conducted in several plants, including *Arabidopsis* (Tian *et al.*, 2004), grapevine (Grimplet *et al.*, 2016), tomato (Huang *et al.*, 2015), and Chinese cabbage (Song *et al.*, 2014), which comprise of 33, 52, 53 and 48 members, respectively. In plants, some members of the GRAS family have been functionally characterized and shown to play diverse functions (Bolle, 2004; Hakoshima, 2018). Plant GRAS transcription factors are involved in the developmental processes, signal transduction pathways, pathogen and stress responses (Hirsch & Oldroyd, 2009; Davière & Achard, 2013; Ma *et al.*, 2010). Members of PAT1 proteins are crucial in the transduction of light signaling pathways. For instance, SCL21 and PAT1 are positive regulators of phytochrome A signal transduction, and SCL13 participates in the phytochrome B pathway (Torres-Galea *et al.*, 2006; Torres-Galea, Hirtreiter & Bolle, 2013). In addition, PAT1 proteins regulate responses to abiotic stress. Overexpression of VaPAT1 enhances cold, drought and salt tolerance in transgenic *Arabidopsis* (Yuan *et al.*, 2016), while OsGRAS23 improves drought tolerance in rice (Xu *et al.*, 2015). Some genes belonging to LS and HAM groups regulate cell differentiation in meristem formation (Schulze *et al.*, 2010). LISCL, SCR, and SHR proteins are involved in the mechanisms that control plant organ development (Gong *et al.*, 2016; Morohashi *et al.*, 2003). Gibberellins, an important plant hormone, regulates many aspects of plant growth and development. In *Arabidopsis*, DELLA proteins function as repressors of the gibberellin signal transduction (Davière & Achard, 2013; Fukazawa *et al.*, 2014). It was found that SCL3 is a positive regulator of DELLA in the root endodermis which integrates and maintains the functions of the GA pathway (Heo *et al.*, 2011). Furthermore, DELLAs play key roles in the mechanism of light signal transduction during growth (Achard *et al.*, 2007).

Mustard crop (*B. juncea*), an annual or biennial herbage species belonging to the genus *Brassica* in the *Cruciferae* family, is widely cultivated in Asia and Europe (Liu, 1996). *B. juncea* (AABB, $2n = 36$) is an allotetraploid species derived from the hybridization between diploid species *Brassica rapa* (AA, $2n = 20$) and *Brassica nigra* (BB, $2n = 16$). Highly differentiated phenotypes are observed in this crop, and its cultivar types are generally classified on the basis of edible organs: leaf mustard, stem mustard, root mustard, oilseed mustard, and seed stalk mustard (Qi, Zhang & Yang, 2007). Stem mustard is a vegetable with an edible swollen stem grown in China (Yang *et al.*, 2018). Besides being consumed as a fresh plant food, pickled products made from the stem mustard are widely consumed around the world. The swelling of the stem mustard is a complex process and is the most important factor that determines the yield. Temperature, photoperiod, cell division, and endoreduplication are known to influence stem swelling (Guo *et al.*, 1994; Shi *et al.*, 2012). So far, research on stem mustard has been mainly focused on genetics and breeding,

physiological, biochemical, and traditional classification. Hence, there are few reports on the molecular mechanism of stem swelling.

Due to its role in plant growth and development processes, GRAS transcription factors have been extensively studied in several plants and applied in various breeding and genetic engineering programs. The whole genome sequence of *B. juncea* has already been unraveled (Yang *et al.*, 2016), which provides a platform for the exploration of the structure, evolution, and biological function of the GRAS family. On this basis, we performed a genome-wide analysis of the GRAS family in *B. juncea* with a focus on gene structures, evolutionary analysis, and expression profiling during the stem swelling period. The results from this study provide a better understanding of the function and mechanisms of the GRAS family in *B. juncea*.

MATERIALS & METHODS

Identification of GRAS transcription factors in *B. juncea*

All nucleotide and protein sequences were downloaded from the latest version (V1.5) of *B. juncea* genome (<http://brassicadb.org/brad/>) to build a local database. HMMER3.0 software (<http://www.ebi.ac.uk/Tools/hmmer/>) was used to identify the GRAS proteins based on the HMM profile (GRAS, PF00011) at default parameters. All GRAS proteins obtained were further searched on the NCBI and Pfam databases to determine the GRAS domain. Sequences lacking the complete GRAS domain were eliminated. The Sequence Manipulation Suite (<http://www.bioinformatics.org/sms/>) and ExPASy (<https://web.expasy.org/>) software were utilized to analyze the composition and physical/chemical properties of GRAS proteins (Gasteiger *et al.*, 2003). The position information of all GRAS genes was derived from the *B. juncea* genome database, and the chromosome location was drawn using MapInspect software (<https://mapinspect.software.informer.com/>).

Phylogenetic analysis of GRAS transcription factors

The GRAS sequences of *Arabidopsis* were extracted from TAIR (<https://www.arabidopsis.org/>) (Table S1). The GRAS family in other species were downloaded from the Plant Transcription Factor Database (<http://planttfdb.cbi.pku.edu.cn/>). Multiple alignments of GRAS protein sequences from *Arabidopsis* and *B. juncea* were performed using ClustalX in default parameters. A phylogenetic tree was generated using MEGA5.0 by the Neighbor-joining method with the 1,000-times bootstrap test.

Analysis of gene structure, conserved motif, and promoter region

Exon-intron structures of BjuGRASs were examined using the Gene Structure Display Server tool (<http://gsds.cbi.pku.edu.cn/>). Conserved motifs were predicted by the Conserved Domain Database (<https://www.ncbi.nlm.nih.gov/cdd>) and MEME Suite (<http://meme-suite.org/>). The parameters in MEME were set as default value except for the option “MEME should find” which was set to 15, and the motif structure schematic diagrams were drawn using the TBtools software (Chen *et al.*, 2018). The upstream 1,500 bp regions of DELLA genes were downloaded from the genome database. PlantCARE (<http://bioinformatics.psb.ugent.be/webtools/plantcare/html/>) was used to determine the *cis*-element on gene promoter region (Rombauts *et al.*, 1999).

Functional divergence analysis

DIVERGE3.0 (Gu et al., 2013) was used to estimate the functional divergence between gene clusters of the GRAS family. The values of type-I and type-II were tested. Type-I represented the functional divergence at the site-specific shift of evolutionary rate, while type-II reflected the changes at the site-specific shift of amino acid physiochemical property.

Analysis of functional annotation and interaction network

All BjuGRAS proteins were compared using the Gene Ontology (GO) database to investigate their putative functions. Blast2GO (Conesa et al., 2005) was used to obtain the relevant GO ID, and the results of the analysis contained three parts: molecular function, cellular component, and biological process. Specific protein interactions among the GRAS transcription factors in *B. juncea* were constructed using the STRING software (Franceschini et al., 2013).

Expression analysis of BjuGRASs in stem swelling in stem mustard

To identify the BjuGRAS genes involved in stem swelling in stem mustard, the RNA-seq data generated from three biological replicates of four stem swelling stages was analyzed as follows: stage 1 (stem diameter was 2 cm), stage 2 (stem diameter was 4 cm), stage 3 (stem diameter was 6 cm), and stage 4 (stem diameter was 8 cm). The stem mustard variety of 'Fuza No.2' was used for RNA sequencing on the Illumina HiSeq 4000 platform, and the data were deposited on the NCBI website with the accession number SRP151320. The expression abundance of BjuGRAS genes was represented as FPKM (Trapnell et al., 2010). FPKM values were normalized to the mean of the whole data and then transformed by \log_2 . The heatmap was generated by MultiExperiment Viewer software (Saeed et al., 2003).

RNA extraction and quantitative real-time PCR (qRT-PCR) analysis

Total RNA was extracted from the stem samples at four stem swelling periods (stem diameters were 2 cm, 4 cm, 6 cm, and 8 cm) using the total RNA kit (Tiangen, Beijing, China). For cDNA synthesis, 1.0 μg RNA was reverse transcribed with oligo (dT) and random primers using the GoldenstarTM RT6 cDNA Synthesis Mix (TsingKe, Beijing, China). qRT-PCR was conducted with a Bio-Rad CFX96TM real-time PCR System (Bio-Rad, CA, USA) using 2 \times T5 Fast qPCR Mix (SYBRGreenI) (TsingKe, Beijing, China). All primers used are shown in Table S2. All experiments were performed with three independent RNA samples, and *Actin2* (*BjuB008540*) was used as the internal control to normalize the gene expression. The relative mRNA expression was calculated using the $2^{-\Delta\Delta CT}$ method (Pfaffl, 2001).

RESULTS

Identification of GRAS transcription factor family in *B. juncea*

After screening on the *B. juncea* genome database, a total of 88 genes encoding GRAS proteins were identified and renamed as BjuGRAS1~BjuGRAS88. The gene nomenclature, length of amino acid, protein molecular weight, theoretical isoelectric point (*pI*), grand average of hydropathicity (GRAVY), and amino acid composition are detailed in Table S3.

The deduced length of GRAS proteins ranged from 318 to 792 amino acids, the molecular weights ranged from 35.79 kD to 88.74 kD, and the *pI* ranged from 4.66 to 8.45. In terms of the amino acid composition, aliphatic amino acids accounted for the largest proportion with an average of 20%, while aromatic amino acids were only 8%. The grand average of hydropathy (GRAVY) values of all GRAS proteins were less than zero, suggesting that these proteins were hydrophilic.

Phylogenetic relationship and distribution of GRAS family factors

To understand the phylogenetic relationship and classification of GRAS genes, a phylogenetic tree was constructed based on multiple sequence alignment of 88 proteins from *B. juncea* and 33 from *Arabidopsis*. All GRAS proteins were divided into nine cluster groups: LISCL, PAT1, SCL3, DELLA, SCR, SHR, LS, SCL28 and HAM (Fig. 1). This classification was slightly different from other plants, such as tea plant (Wang et al., 2018) and sacred lotus (Wang et al., 2016). The PAT1 and LISCL groups were the two largest subfamilies which accounted for 21% and 22% of the total GRAS genes, respectively, while SCL28 was the smallest group having three members in *B. juncea* and one member in *Arabidopsis*.

The GRAS family factors have been comprehensively identified in many species based on whole-genome sequencing. To compare the distribution of the GRAS family among species, we analyzed the number of GRASs in 20 species, ranging from algae to higher plants. As summarized in Table 1, the GRAS genes were exclusively found in higher plants, and no member was identified in lower plants (*Klebsormidium flaccidum*, *Volvox carteri*, *Ostreococcus lucimarinus*). This indicated that the GRAS genes evolved from lower plants to higher plants. The number of GRAS families varied greatly among different species in higher plants. Among them, *Brassica napus* contained 92 members, followed by *B. juncea* (88) and *Zea mays* (86). *Marchantia polymorpha* had the lowest number with 11 GRASs according to our analysis. All groups were widely present in many species except for *Marchantia polymorpha* which did not have the PAT1 and SCL3 groups, and *Brassica oleracea* which had no SCL28 gene. SCL9 was the largest group, followed by PAT1 and HAM. There were few SCL28 genes compared to other groups.

Gene structure analysis of GRAS genes

Gene structure among GRAS family groups was compared in order to analyze their differences. Only ten BjuGRAS genes had one or more introns: two, four, and four for SCR, PAT1, and LISCL groups, respectively (Figs. 2A–2B). The remaining 89% of the BjuGRAS genes did not contain any intron, which is similar to the exon-intron structural characteristic of this family in other species. For example, 88%, 83.3%, and 80.23% of GRAS genes in grapevine, Chinese cabbage, and maize had only one exon, respectively (Song et al., 2014; Guo et al., 2017).

The conserved motifs among sequences were predicted to provide insights into the structural relationships. It was discovered that the C-terminus of GRAS proteins is highly conserved in terms of sequence homology (Figs. 2C–2D). The GRAS domain was identified in all BjuGRASs, and the DELLA structure was only found in the DELLA group (Fig. 2C).

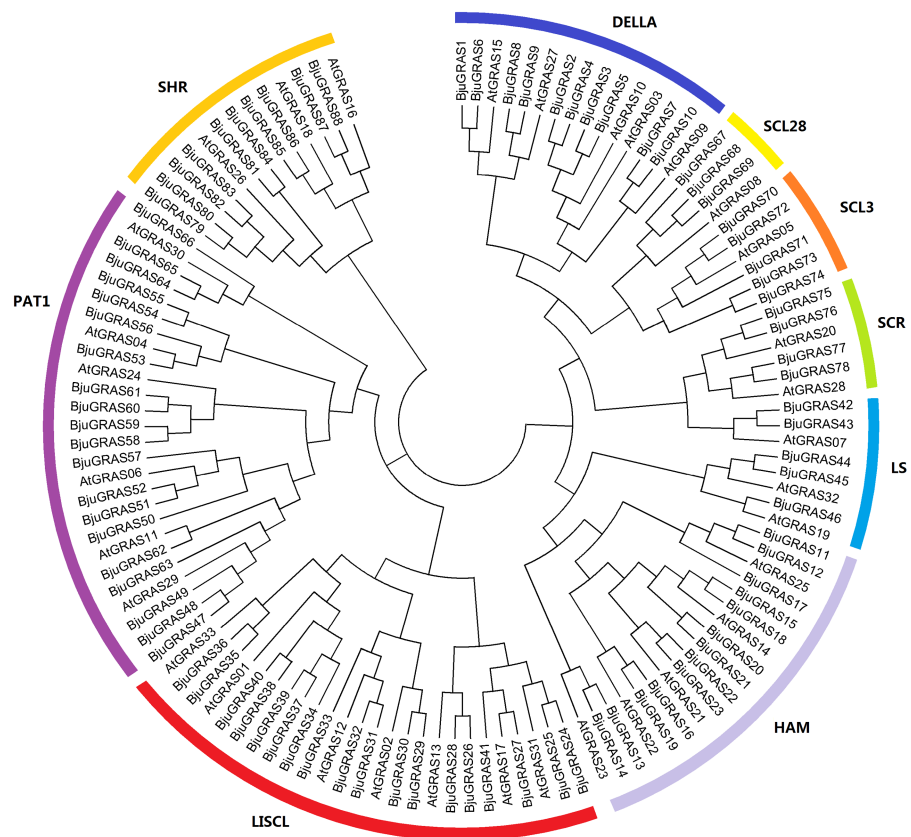


Figure 1 Phylogenetic tree of GRAS proteins from *Brassica juncea* and *Arabidopsis*. The phylogenetic tree was constructed by the Neighbor-joining method with 1,000 bootstrap replications. The nine groups are represented with different colors.

Full-size DOI: 10.7717/peerj.6682/fig-1

Fifteen distinct motifs were identified and used to distinguish each group (Fig. 2D and Table 2). Members of each group were highly similar in terms of motif composition but differed from members of other groups. The common motif in all BjuGRASs was motif 2 which contained a VHIID sequence. Several motifs were found in one or two groups; for example, motif 14 in DELLA, motif 13 in LISCL, motif 11 in PAT1, and motif 15 in LISCL. High sequence similarities in BjuGRASs also supported the phylogenetic relationship and the classification of group clusters.

Chromosomal distribution and duplication of BjuGRAS genes

Except for the nine genes that were located on unanchored contigs or scaffolds, the remaining 79 BjuGRAS genes were unevenly distributed in all 18 chromosomes (Fig. 3). Among them, 43 genes were found on the A subgenome and 36 genes on the B subgenome. ChrA09 harbored the highest number of BjuGRAS genes (eight genes), followed by seven genes on ChrB02, and six genes on ChrA06, ChrB06, and ChrB08. Gene duplication events, including tandem duplication, dispersed duplication, and chromosomal segmental duplications were also found in the chromosomes. According to the localization and sequence alignment analysis of BjuGRAS genes, at least 38 gene pairs with more than

Table 1 Comparison of GRAS transcription factors among different species.

Taxonomic Group	Species	Classification									Total
		PAT1	SCL9	SHR	SCR	LAS	HAM	SCL28	SCL3	DELLA	
Dicotyledon	<i>Arabidopsis thaliana</i>	6	7	3	2	3	5	1	1	5	33
	<i>Brassica rapa</i>	12	10	5	2	2	8	2	2	5	48
	<i>Brassica juncea</i>	20	18	10	4	4	14	3	5	10	88
	<i>Brassica oleracea</i>	7	8	5	1	2	6	0	2	4	35
	<i>Brassica napus</i>	23	19	7	4	4	16	4	5	10	92
	<i>Nelumbo nucifera</i>	9	2	7	2	5	5	1	2	5	38
	<i>Medicago truncatula</i>	11	21	9	3	1	7	2	11	2	67
	<i>Solanum tuberosum</i>	17	21	6	3	5	6	4	3	5	70
Monocotyledon	<i>Zea mays</i>	10	24	9	4	4	15	5	8	7	86
	<i>Oryza sativa</i>	8	15	5	4	5	8	3	8	4	60
	<i>Sorghum bicolor</i>	7	39	7	4	3	8	2	6	4	80
	<i>Phyllostachys heterocycla</i>	13	13	4	3	1	13	2	5	5	59
	<i>Setaria italica</i>	10	18	7	4	3	8	1	6	5	62
Basal Magnoliophyta	<i>Amborella trichopoda</i>	3	11	5	4	2	7	1	3	7	43
Coniferophyta	<i>Picea abies</i>	12	1	2	3	2	6	1	1	1	29
Marchantiophyta	<i>Marchantia polymorpha</i>	0	1	2	1	1	1	1	0	4	11
Bryophyta	<i>Physcomitrella patens</i>	2	7	9	5	6	5	2	5	2	43
Charophyta	<i>Klebsormidium flaccidum</i>	0	0	0	0	0	0	0	0	0	0
Chlorophyta	<i>Volvox carteri</i>	0	0	0	0	0	0	0	0	0	0
	<i>Ostreococcus lucimarinus</i>	0	0	0	0	0	0	0	0	0	0

90% sequence similarity were found to be homologous genes, 30 pairs of which were a one-to-one match between the A subgenome and B subgenome (Table S4). Several hotspots of GRAS genes clusters were observed among the chromosomes. For example, *BjuGRAS37*, *BjuGRAS39*, and *BjuGRAS40* were clustered on a 15-kb segment in ChrB06 whereas *BjuGRAS32/BjuGRAS35* and *BjuGRAS34/BjuGRAS38* were clustered on ChrA07 and ChrA09 with a distance of less than 5 kb, respectively. In addition, multiple gene pairs were clustered in some regions, such as large sections of ChrA01, ChrB05, ChrA10, and ChrB02, which may be attributed to chromosomal segmental duplications.

Estimation of functional divergence

Due to the number limits (at least four sequences in clusters) used in the DIVERGE3.0 tool, LS and SCL28 groups were excluded during functional divergence analysis. Pairwise comparisons of protein sequences among the seven groups were performed to estimate the values of divergence coefficient for type I and type II, and the results are presented in Table 3. The difference in the evolution rate of GRAS genes after gene replication is reflected by the significant variability of the specific amino acid site. The greater the divergence coefficient, the greater the variability. The divergence coefficient for type I (θ_I) was higher than 0 and ranged from 0.2072 to 0.9992, which suggested that there was a significant difference in the functional divergence among GRAS groups. The divergence coefficient for type II (θ_{II}) was also found, indicating that the physical and chemical properties of amino acids were

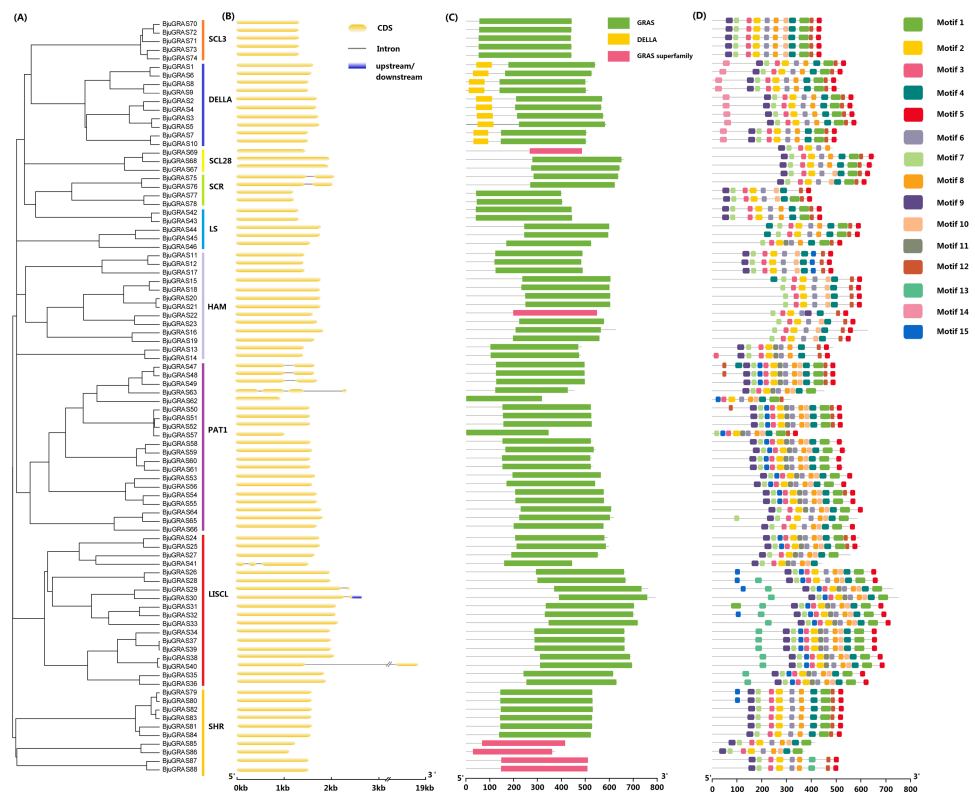


Figure 2 Structure analysis of BjuGRAS genes. (A) Phylogenetic tree of GRAS proteins in *Brassica juncea*. (B) Exon-intron structure of BjuGRAS genes. (C) The conserved domains in BjuGRAS proteins. (D) Distribution of motifs of BjuGRAS proteins.

Full-size [DOI: 10.7717/peerj.6682/fig-2](https://doi.org/10.7717/peerj.6682/fig-2)

significantly changed. Collectively, these results suggested that GRAS groups may have undergone varying degrees of functional divergence after gene duplication. Moreover, a posteriori probability (Qk) was used to show that divergence-related residues were responsible for functional divergence. $Qk > 0.95$ was used as the cut-off for defining the critical amino acid sites (CAASs) between GRAS groups. Seven paired groups containing 358 CAASs were detected in type I analysis, of which 115, 115, and 114 were identified in SCL3/LISCL, SCL3/PAT1, and DELLA/LISCL, respectively. A total of 536 CAASs were identified in type II, of which the most highly represented paired groups were DELLA/SCL3, SCL3/HAM, and SCL3/SCR. Compared to type I, many CAASs were identified in more pairs in type II, suggesting that the functional divergence among GRAS genes might be attributed to the change in amino acid property, followed by site-specific shifts in evolutionary rate.

Functional annotation of BjuGRAS genes

All 88 BjuGRAS genes were analyzed by Blast2GO to investigate their functional annotation. A total of 59 members were mapped on the GO database, resulting in 412 annotations (Table S5). The annotation results were classified into 22 function terms, which were in turn assigned into three ontology categories: biological process (BP), cellular component

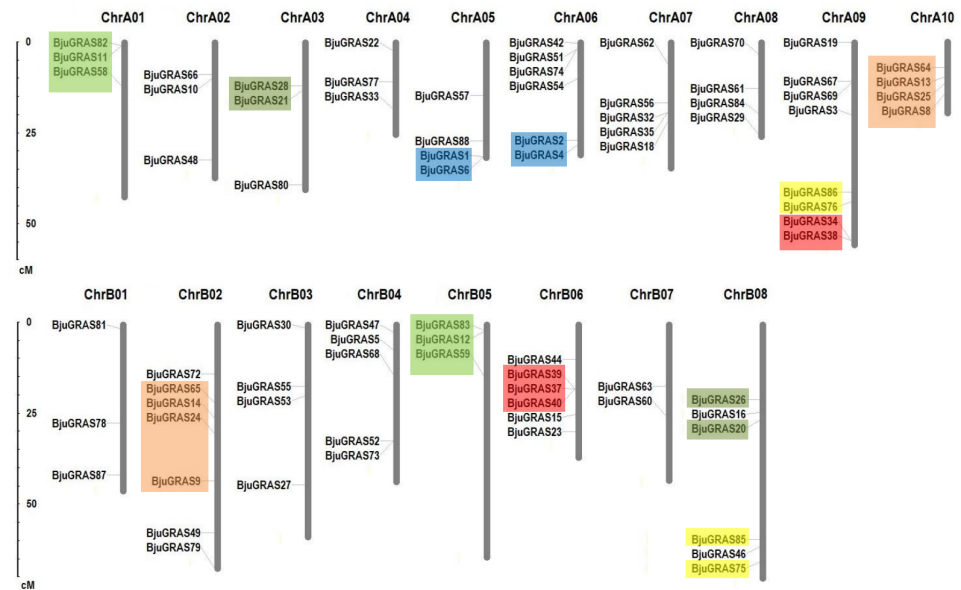


Figure 3 Chromosomal distribution and gene duplications of GRAS genes in the *Brassica juncea* genome. The segmental duplicated are represented with different colors. The scale bar on the left indicates the size of chromosomes.

Full-size [DOI: 10.7717/peerj.6682/fig-3](https://doi.org/10.7717/peerj.6682/fig-3)

Table 2 Motif sequences identified by MEME tools.

Motif	Length of amino acid	Best possible match
Motif 1	41	VVEZECLGREIVNVVACEGSERVERHETLGKWRVRRMMAGF
Motif 2	29	VHIIDFDIGQGFQWPSLIQALASRPGGPP
Motif 3	21	FYEVCPYLKFGYFTANQAILE
Motif 4	29	VEQEGNHNTPPFLTRFKEALHYYSALFDS
Motif 5	21	DDGWLLLGWKDRPLVTVSAWK
Motif 6	21	TGERLAQFAKSLGVPPEFNAV
Motif 7	21	PSGDPMQRLAAYFAEALAARJ
Motif 8	21	PGEALAVNSVFRHLNLPDES
Motif 9	29	DLRSLLECAQAVSSGDLALANALLKZJR
Motif 10	21	VENPRDRLLRLIKSLSPKVVT
Motif 11	21	KLRTGIDDPQSGFRPGGGLE
Motif 12	17	KPVPLSSYAAKQAKLLL
Motif 13	28	SMFSDAESAMQFKRGLEEASKFLPNSDQ
Motif 14	29	DELLAVLGYKVRSSSEMAEVAQKLEQLET
Motif 15	21	SSIYKALKSKKPTAAEILKAY

(CC), and molecular function (MF). The GO categories were further summarized on the basis of GO second level terms (Fig. 4). Within BP, the top four groups were ‘cellular process’, ‘metabolic process’, ‘biological regulation’ and ‘regulation of biological process’. Under the CC category, three terms were identified: ‘cell part’, ‘organelle’, and ‘cell’. In the

Table 3 Functional divergence analysis of different groups of GRAS family.

	Type-I				Type-II		
	θ_I	SE	LRT	Qk>0.95	θ_{II}	SE	Qk>0.95
DELLA/SCL3	0.7344	0.3514	4.3690	0	0.4356	0.0866	57
DELLA/SCR	0.2072	0.1358	2.3290	0	0.2753	0.1065	44
DELLA/HAM	0.3272	0.1931	2.8698	0	-0.0007	0.2869	42
DELLA/PAT1	0.7088	0.1877	14.2671	0	0.0117	0.2700	21
DELLA/LISCL	0.9848	0.1992	24.4302	114	0.2327	0.1922	48
DELLA/SHR	0.4112	0.2609	2.4841	0	0.0582	0.2460	35
SCL3/SCR	0.3720	0.2581	2.0781	0	0.3889	0.0898	53
SCL3/HAM	0.3824	0.6102	0.3927	0	-0.0081	0.3046	56
SCL3/PAT1	0.9856	0.5617	3.0789	115	-0.0600	0.2769	13
SCL3/LISCL	0.9992	0.3529	8.0169	115	0.1925	0.1944	39
SCL3/SHR	0.5120	0.8816	0.3373	0	-0.0944	0.2741	0
SCR/HAM	0.1792	0.1557	1.3249	0	-0.2762	0.3196	0
SCR/PAT1	0.4912	0.1580	9.6638	0	-0.1285	0.2827	6
SCR/LISCL	0.3905	0.1630	5.7409	0	0.0361	0.2087	42
SCR/SHR	0.4224	0.2029	4.3347	0	0.0095	0.2481	39
HAM/PAT1	0.6208	0.1308	22.5304	3	-0.3747	0.5464	0
HAM/LISCL	0.7728	0.1393	30.7679	6	-0.1956	0.4379	0
HAM/SHR	0.3280	0.1593	4.2390	0	-0.6509	0.6047	0
PAT1/LISCL	0.5923	0.1304	20.6357	1	-0.3215	0.4229	0
PAT1/SHR	0.5208	0.1435	13.1721	0	-0.6904	0.5410	0
LISCL/SHR	0.8632	0.1971	19.1818	4	0.1313	0.3453	41

MF category, 54 genes were related to ‘transcription regulator activity’ and 49 were related to ‘binding’.

Interaction network analysis of BjuGRAS proteins

To explore the regulatory relationship of GRAS transcription factors in *B. juncea*, an interaction network was constructed according to the orthologs in *Arabidopsis*. A total of 31 GRAS proteins and eight proteins in *B. juncea* were found in the complex interaction network map (Fig. 5). Seven proteins (BjuGRAS1, 3, 5, 6, 7, 8, 10), which belong to the DELLA group, showed significant correlations with several other proteins. Except for these GRAS proteins, the rest were homologous to SLY1 protein (BjuA004160, BjuB014220), PIF3 protein (BjuB029084, BjuA021658), and GID1 family protein (BjuB006276, BjuB022926, BjuB037910, BjuO005843). These relationships provide the first glimpse of the functions of BjuGRAS genes in the regulatory mechanisms of biological functions.

Promoter region analysis of DELLA group transcription factors related to light and hormone signaling

Prediction and identification of transcription factor binding sites can accelerate the understanding of the mechanisms of transcriptional regulation. Numerous *cis*-elements were identified at the promoter regions of DELLA genes, and at least ten kinds of

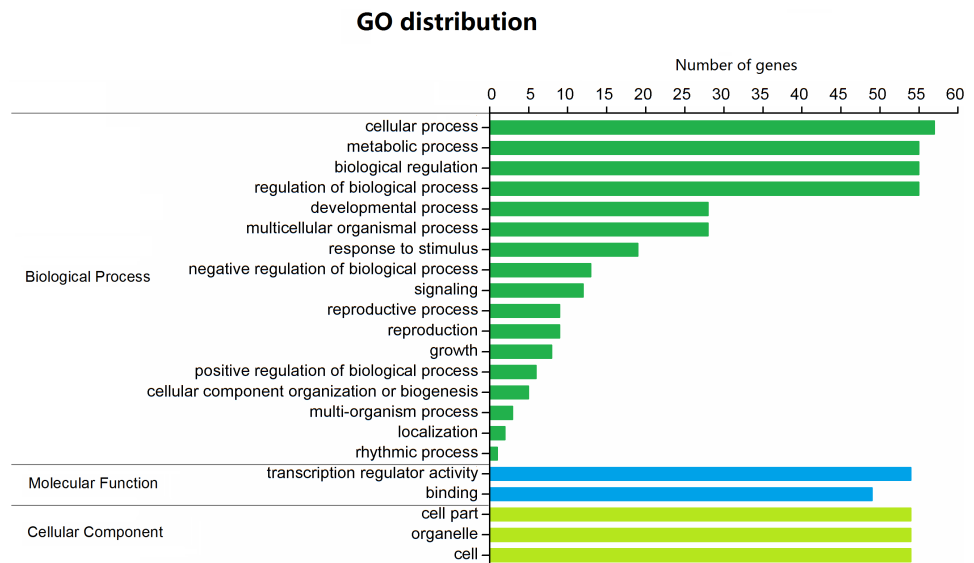


Figure 4 GO function classification of BjuGRAS genes. The annotation results were classified into three GO categories on the basis of GO second level terms.

Full-size DOI: 10.7717/peerj.6682/fig-4

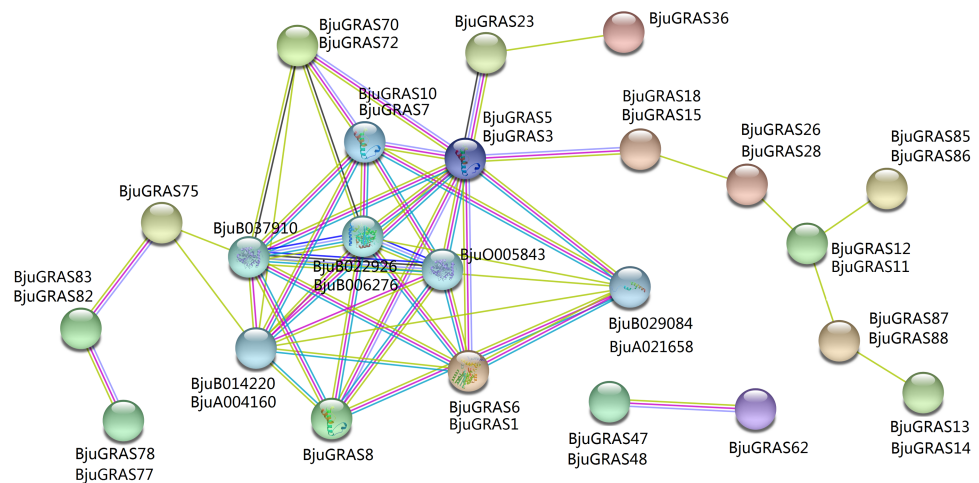


Figure 5 Interaction network of BjuGRAS factors in *Brassica juncea* according to orthologs in *Ara-bidopsis*.

Full-size DOI: 10.7717/peerj.6682/fig-5

elements related to light responsiveness and four kinds related to hormone responsiveness were identified in several genes (Fig. 6). Our results showed that the light responsive elements G-box, I-box, GT1, and Box 1 appeared 13, 12, 10, and nine times, respectively, while gibberellin responsive elements P-box and GRAE appeared five times each. The MeJA-responsive element (CGTCA-motif) appeared 11 times, of which *BjuGRAS1* and *BjuGRAS7* appeared three times, suggesting that these two genes may be involved in the regulation of methyl jasmonate. *BjuGRAS1*, 3, and 6 contained more regulatory elements

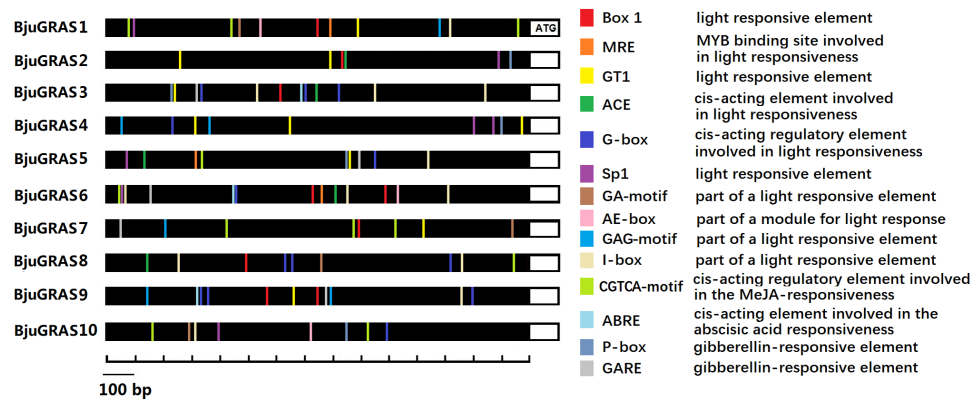


Figure 6 *cis*-regulatory element analysis of DELLA group members. Different colors indicate different *cis* elements existing in the promoter region.

Full-size DOI: 10.7717/peerj.6682/fig-6

in their promoter regions, which contributed to their high interaction and involvement in regulatory processes.

Expression analysis of BjuGRAS genes during stem swelling stages

The RNA-seq data on the four stages of stem swelling was used to investigate the expression profiles of BjuGRAS genes. The transcript levels of 83 BjuGRAS genes were obtained from at least one stage and five BjuGRAS genes were not detected. It should be noted that the expression difference in stage 1/stage 2 and stage 3/stage 4 comparisons were not significant (Fig. 7). Most genes displayed huge changes from stage 2 to stage 3, which suggested that this stage is important during stem swelling. Most BjuGRAS genes belonging to the same group had a similar expression pattern. For example, genes from PAT1 and SCR displayed a relatively high level in all four stages, while the expression levels of SCL28 and SHR members were relatively low. Analysis of the expression patterns of DELLA genes showed that they were all decreased across the stem swelling stages, but six of them (*BjuGRAS2*, 3, 4, 5, 7, and 10) were highly expressed. Among 18 genes encoding LISCL proteins, five were increased and highly expressed during stem development, whereas the expressions of other genes were variable. The diversity of expression patterns among different groups indicated that BjuGRAS genes have special functions at different developmental stages.

Characterization and expression analysis of interaction genes of DELLA genes during stem swelling stages

The expression patterns of eight genes identified from interaction analysis were calculated over the entire course of stem development (Fig. 8). The expression pattern of four GID1 genes (*BjuB006276*, *BjuB022926*, *BjuB037910*, *BjuO005843*) was opposite to that of DELLA genes. Their expression was up-regulated during stem swelling, especially from stage 2 to stage 3. PIF3 genes showed a more stable expression throughout the four stages. However, *BjuB029084* was lowly expressed, while *BjuA021658* displayed a relatively high expression level. Two SLY1 genes, *BjuA004160* and *BjuB014220*, maintained a high expression level

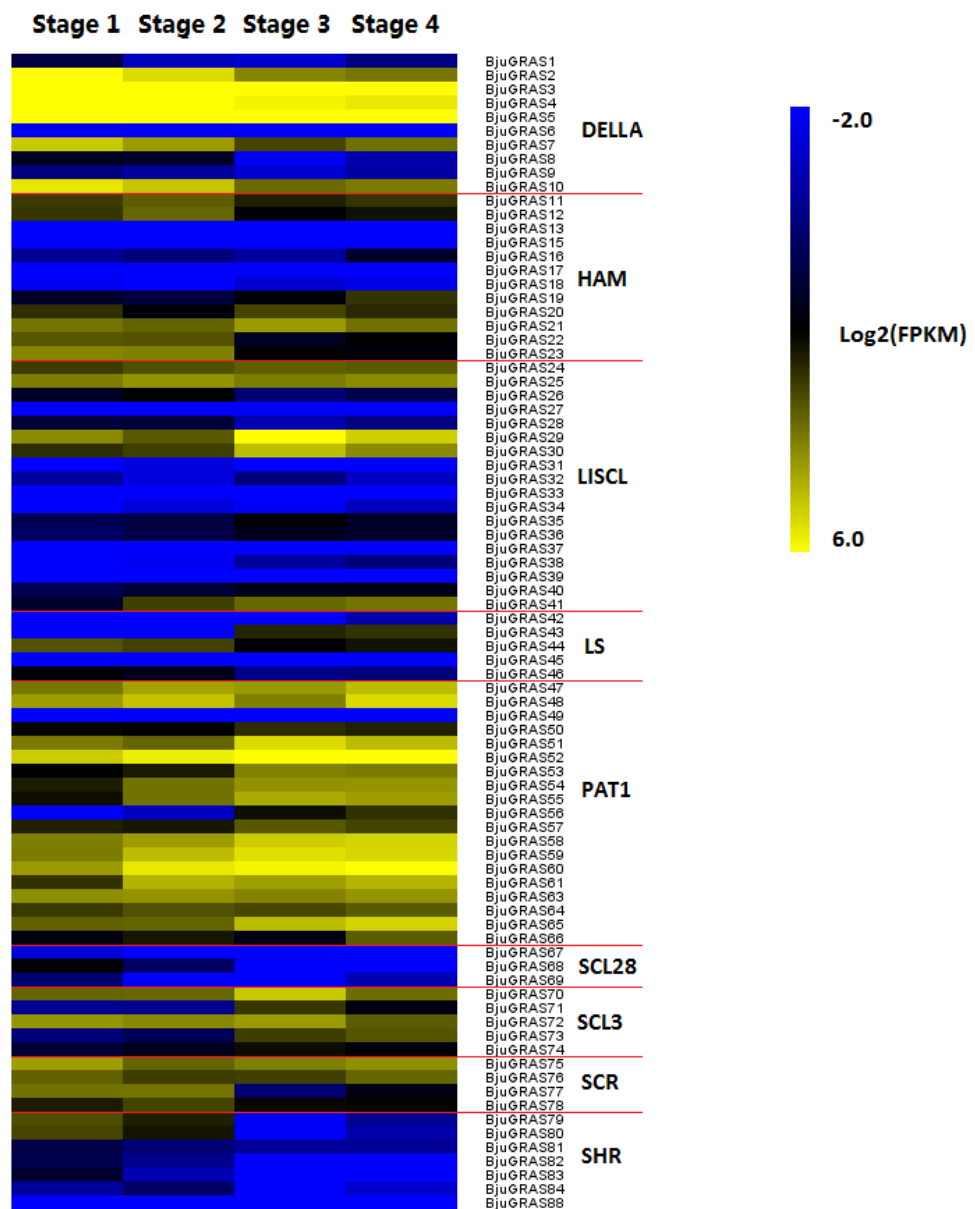


Figure 7 Expression levels of BjuGRAS genes at different developmental stages in stem swelling. Fragments per kilobase per million (FPKM) values of BjuGRAS genes were transformed by log₂, and the heatmap was constructed with MultiExperiment Viewer software.

Full-size  DOI: [10.7717/peerj.6682/fig-7](https://doi.org/10.7717/peerj.6682/fig-7)

throughout stem development. These results demonstrated that the genes recognized in previous interaction analyses might be involved in the regulation of stem swelling.

Analysis of genes involved in stem swelling by qRT-PCR

To validate whether *DELLA* genes and interaction genes were expressed in the stem and whether they were involved in stem swelling, nine genes were analyzed using qRT-PCR. The result showed that the nine genes were differentially expressed during stem swelling

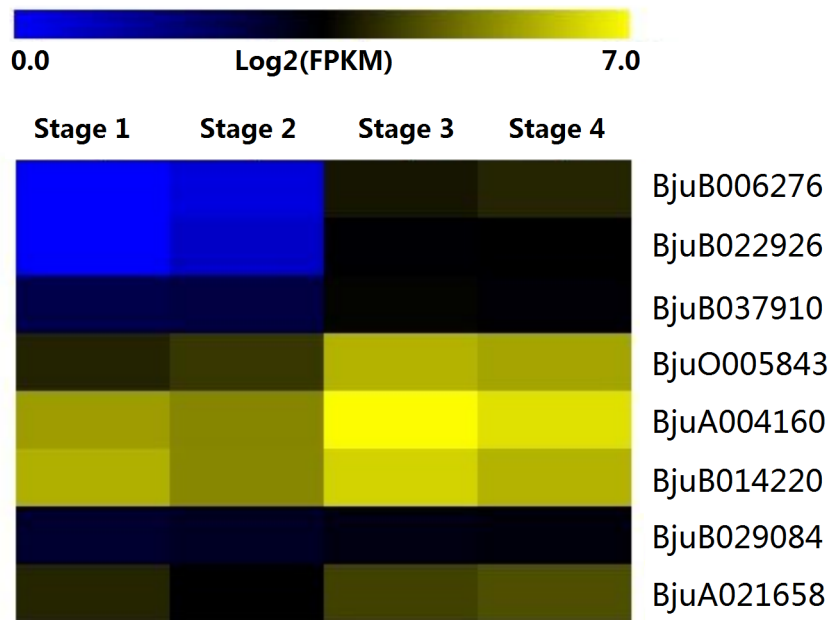


Figure 8 Expression levels of interaction genes of DELLA genes at different developmental stages in stem swelling.

Full-size DOI: [10.7717/peerj.6682/fig-8](https://doi.org/10.7717/peerj.6682/fig-8)

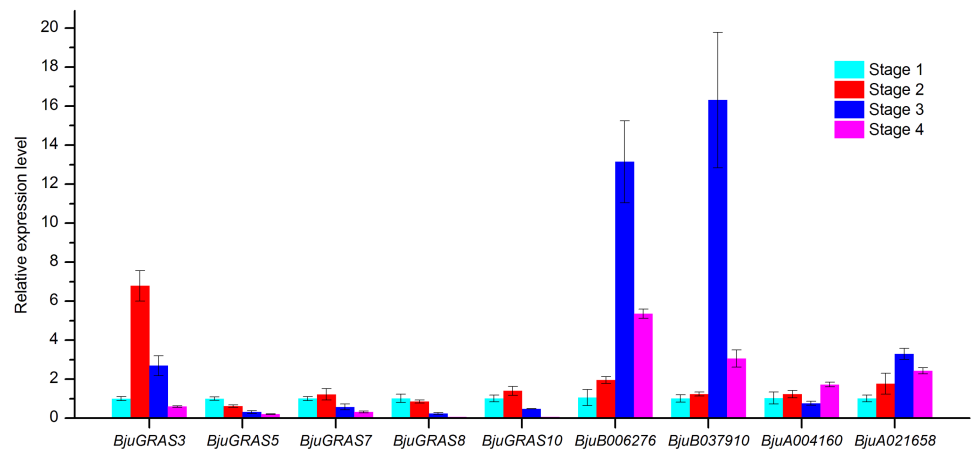


Figure 9 Analysis of gene expressions during four stem swelling stages by qRT-PCR.

Full-size DOI: [10.7717/peerj.6682/fig-9](https://doi.org/10.7717/peerj.6682/fig-9)

stages (Fig. 9). The expression level of *BjuGRAS3* had a seven-fold increase in stage 2, while its expression in stage 3 and stage 4 was down-regulated. The remaining four DELLA genes (*BjuGRAS5*, 7, 8, 10) were remarkably down-regulated during the stem swelling process and were lowly expressed in the later stages of stem swelling as determined by RNA-seq (Fig. 7). Two GID1 genes (*BjuB006276* and *BjuB037910*) were remarkably up-regulated from stage 2 to stage 3, and with higher expression level in stage 3 and stage 4. *BjuA021658* expression was increased during the four stages, but the expression of *BjuA004160* was variable. This

finding further demonstrated that the selected genes were extensively involved in stem swelling.

DISCUSSION

Identification of GRAS transcription factors in *B. juncea*

Brassica is an important genus of the *Cruciferae* family and contains many crops with economic value. *B. rapa* ($AA, 2n = 20$), *B. oleracea* ($CC, 2n = 18$), *B. nigra* ($BB, 2n = 16$), *B. napus* ($AACC, 2n = 38$), *B. juncea* ($AABB, 2n = 36$), and *Brassica carinata* ($BBCC, 2n = 34$) were the most representative species, and the genetic relationship among these six *Brassica* species are called the 'U-triangle' model (Nagaharu, 1935). In the 'U-triangle' model, there are three basic subgenomes (A subgenome, B subgenome, and C subgenome). The mustard crop is an economically and nutritionally important vegetable. Genome sequencing for *Brassica* provides nearly all information needed to explore the evolution and functional diversity of genes. As an allotetraploid plant, *B. juncea* originated from the natural hybridization between *B. rapa* and *B. nigr* a. According to the 'U-triangle' theory, the ratio between the number of genes in *B. juncea* and *B. rapa* is about 2:1. The present study identified 88 GRAS genes in the *B. juncea* genome, which is about two times the number of GRAS genes in *B. rapa* and three times the number of GRAS genes in *Arabidopsis*. For many other gene families, several studies revealed that gene duplication is the main reason for gene family expansion (Nakano et al., 2006; Kong et al., 2007). Homologous gene pairs and gene clusters were found on the A subgenome and B subgenome, suggesting that tandem and segmental duplication events have occurred in genomic rearrangements and expansions.

The structure of the phylogenetic tree of GRAS genes in *B. juncea* and *Arabidopsis* indicated that GRAS genes can be classified into nine groups. Structural analyses provided more information needed to understand the evolution patterns and functional divergence. The shift in amino acid site-specific patterns may contribute to functional divergence during evolution (Lichtarge, Bourne & Cohen, 1996; Gu, 1999; Sun et al., 2002). Functional divergence analysis of type I and II coefficients showed that GRAS genes in all groups were functionally divergent from each other, indicating that change had occurred in evolutionary rates and amino acid property. Similarities in motif composition were observed in the same group, which may have contributed to the diverse functions of the GRAS family. In addition, the highly conserved motifs of BjuGRASs supported the phylogenetic relationship and classification of group clusters.

The role of BjuGRAS genes in stem swelling

GRAS proteins are a family of plant-specific transcription factors that play pivotal roles in plant growth and development (Bolle, 2004; Hirsch & Oldroyd, 2009). The swelling stem is the main edible organ of the stem mustard. The process of stem swelling is complex in terms of physiological and biochemical mechanisms as it involves a series of regulatory networks such as morphogenesis, nutrient accumulation, and gene expression. Exploring the differential expression of genes may reveal the expansion mechanism of the stem at the molecular level, and also provide a theoretical basis for genetic improvement. GRAS genes

in several plant species, especially in the model plant *Arabidopsis*, have been demonstrated to express in a spatial and temporal manner during plant development (Tian et al., 2004; Lee et al., 2008; Yoon et al., 2016). Even so, little is known about their function in the development of *B. juncea*. Here, expression patterns of all BjuGRAS genes were examined in different developmental stages. These results revealed that GRAS genes of the same group displayed similar expression pattern at specific stages, but significant differences were observed among groups, reflecting their involvement in diverse developmental processes. Moreover, qRT-PCR analysis revealed that the expression patterns of five *DELLA* genes (*BjuGRAS3*, 5, 7, 8, 10) were consistent with the RNA-seq data, which further supported a role for these genes in stem swelling.

Complex regulation of *DELLA* genes in stem swelling

Light and hormone signals are involved in plant growth and development (Kepinski, 2006; Kami et al., 2010). *DELLA* proteins are regarded as the key regulators of gibberellin and light signal transduction pathways (Fukazawa et al., 2014; Achard et al., 2003; Feng et al., 2008). Therefore, it is important to explore the regulatory mechanism of *DELLA* genes in stem swelling in stem mustard. The interaction network of GRAS proteins with other proteins in the genome was constructed to identify their interacting proteins. Eight genes encoding *GID1*, *SLY1*, and *PIF3* proteins were found to interact with several *DELLA* genes. It was previously reported that *DELLA* proteins inhibit plant growth and development by repressing the GA signaling pathways (Park et al., 2013). A study on *SLR1* gene, which encodes a *DELLA* protein, showed that overexpression of *SLR1* lacking the *DELLA* domain conferred altered GA responses in rice (Itoh et al., 2005). *GID1* family proteins function as GA receptors and play key roles in the degradation of *DELLA* protein (Ueguchi-Tanaka et al., 2005; Conti et al., 2014). The *GID1* genes are divided into particular subfamilies (*GID1a*, *b*, *c*) based on their structural features and evolution (Gazara et al., 2018). The GA–*GID1*–*DELLA* interaction is required for GA signaling. Functional characterization showed that *GID1a* and *GID1c* retained the canonical GA signaling roles, whereas *GID1b* interaction with *DELLA* protein requires less bioactive GA (Murase et al., 2008; Suzuki et al., 2009; Gazara et al., 2018). *SLY1* encodes a putative F-box subunit of SCF-type E3 ligase, which recognizes and regulates the proteasomal degradation of *DELLA*s in GA–*GID1*–*DELLA* complex (McGinnis et al., 2003). In our study, two *SLY1* proteins (*BjuA004160*, *BjuB014220*), and four *GID1* proteins, *BjuB037910* (belonging to *GID1a* subfamily), *BjuO005843* (belonging to *GID1c* subfamily), *BjuB006276* and *BjuB022926* (both belonging to *GID1b* subfamily), interacted with *DELLA* proteins in the *B. juncea* genome. The expression of the interacting genes was analyzed across the stages of stem swelling. Compared to the low expression of *DELLA* genes, the transcripts of *GID1* and *SLY1* genes were relatively highly expressed, suggesting that the transcriptional regulators *DELLA* genes may negatively regulate *GID1* and *SLY1* genes. qRT-PCR also showed that two *GID1* genes (*BjuB006276* and *BjuB037910*) were gradually increased during stem swelling process and remained elevated in the later stages. Therefore, it can be deduced that the conserved *GID1* genes regulate the *DELLA* genes by inhibiting their translation during stem swelling in stem mustard.

PIF3 is a key transcription factor that positively regulates the phytochrome signaling pathway (Kim et al., 2003). In *Arabidopsis*, a PIF3-like 5 gene regulates gibberellin responsiveness by directly binding to the promoters of DELLA genes through G-box elements (Oh et al., 2007). In this study, *cis*-elements were identified in the promoter regions of DELLA genes. Almost all DELLA genes contained light-responsive elements such as G-box, I-box, GT1, and Box1. These elements are well-characterized in the regulation of light-mediated development (Zentella et al., 2007). The hormonal regulation elements P-box, GRAE, CGTCA-motif were also identified, providing compelling evidence that DELLA genes interact with other genes to modulate light and hormone signal transduction during plant development.

CONCLUSIONS

In this study, a total of 88 GRAS family members were identified in the *B. juncea* genome and classified into nine groups. Chromosome distribution, gene structures, and motif compositions suggested a complex evolutionary history of this family in *B. juncea*. Functional divergence analysis indicated that GRAS gene family had undergone a selective pressure in the evolutionary rates and amino acid properties. An interaction network of GRAS factors with other genome proteins was constructed to explore the protein interactions. Moreover, the expression patterns of GRAS genes and interactive genes in different development stages during stem swelling were investigated. This study provides new insights into the molecular evolution and biological functions of the GRAS gene family.

ADDITIONAL INFORMATION AND DECLARATIONS

Funding

This work was supported by the Shuangzhi project of Sichuan Agricultural University (No.03573134). The funders had no role in study design, data collection and analysis, decision to publish, or preparation of the manuscript.

Grant Disclosures

The following grant information was disclosed by the authors:
Shuangzhi project of Sichuan Agricultural University: 03573134.

Competing Interests

The authors declare there are no competing interests.

Author Contributions

- Mengyao Li conceived and designed the experiments, performed the experiments, analyzed the data, contributed reagents/materials/analysis tools, prepared figures and/or tables, authored or reviewed drafts of the paper, approved the final draft.
- Bo Sun conceived and designed the experiments, prepared figures and/or tables, authored or reviewed drafts of the paper, approved the final draft.

- Fangjie Xie and Ya Luo performed the experiments.
- Ronggao Gong performed the experiments, prepared figures and/or tables.
- Fen Zhang and Zesheng Yan analyzed the data.
- Haoru Tang conceived and designed the experiments, contributed reagents/materials/-analysis tools, authored or reviewed drafts of the paper, approved the final draft.

Data Availability

The following information was supplied regarding data availability:

The data is available at NCBI: accession number [SRP151320](#).

Supplemental Information

Supplemental information for this article can be found online at <http://dx.doi.org/10.7717/peerj.6682#supplemental-information>.

REFERENCES

- Achard P, Liao L, Jiang C, Desnos T, Bartlett J, Fu X, Harberd NP. 2007.** DELLAs contribute to plant photomorphogenesis. *Plant Physiology* **143**:1163–1172 DOI [10.1104/pp.106.092254](#).
- Achard P, Vriezen WH, Van Der Straeten D, Harberd NP. 2003.** Ethylene regulates *Arabidopsis* development via the modulation of DELLA protein growth repressor function. *The Plant Cell* **15**:2816–2825 DOI [10.1105/tpc.015685](#).
- Bolle C. 2004.** The role of GRAS proteins in plant signal transduction and development. *Planta* **218**(5):683–692 DOI [10.1007/s00425-004-1203-z](#).
- Chen C, Xia R, Chen H, He Y. 2018.** TBtools, a Toolkit for Biologists integrating various HTS-data handling tools with a user-friendly interface. *bioRxiv* **2018**:289660 DOI [10.1101/289660](#).
- Conesa A, Götz S, García-Gómez JM, Terol J, Talón M, Robles M. 2005.** Blast2GO: a universal tool for annotation, visualization and analysis in functional genomics research. *Bioinformatics* **21**(18):3674–3676 DOI [10.1093/bioinformatics/bti610](#).
- Conti L, Nelis S, Zhang C, Woodcock A, Swarup R, Galbiati M, Tonelli C, Napier R, Hedden P, Bennett M, Sadanandom A. 2014.** Small Ubiquitin-like Modifier protein SUMO enables plants to control growth independently of the phytohormone gibberellin. *Developmental Cell* **28**(1):102–110 DOI [10.1016/j.devcel.2013.12.004](#).
- Davière JM, Achard P. 2013.** Gibberellin signaling in plants. *Development* **140**:1147–1151 DOI [10.1242/dev.087650](#).
- Feng S, Martinez C, Gusmaroli G, Wang Y, Zhou J, Wang F, Chen L, Yu L, Iglesias-Pedraz JM, Kircher S, Schäfer E, Fu X, Fan LM, Deng XW. 2008.** Coordinated regulation of *Arabidopsis thaliana* development by light and gibberellins. *Nature* **451**:475–479 DOI [10.1038/nature06448](#).
- Franceschini A, Szklarczyk D, Frankild S, Kuhn M, Simonovic M, Roth A, Lin J, Minguéz P, Bork P, Von Mering C, Jensen LJ. 2013.** STRING v9.1: protein-protein interaction networks, with increased coverage and integration. *Nucleic Acids Research* **41**(D1):D808–D815 DOI [10.1093/nar/gks1094](#).

- Fukazawa J, Teramura H, Murakoshi S, Nasuno K, Nishida N, Ito T, Yoshida M, Kamiya Y, Yamaguchi S, Takahashi Y. 2014.** DELLAs function as coactivators of GAI-ASSOCIATED FACTOR1 in regulation of gibberellin homeostasis and signaling in *Arabidopsis*. *The Plant Cell* **26**:2920–2938 DOI [10.1105/tpc.114.125690](https://doi.org/10.1105/tpc.114.125690).
- Gasteiger E, Gattiker A, Hoogland C, Ivanyi I, Appel RD, Bairoch A. 2003.** ExpPASy: the proteomics server for in-depth protein knowledge and analysis. *Nucleic Acids Research* **31**(13):3784–3788 DOI [10.1093/nar/gkg563](https://doi.org/10.1093/nar/gkg563).
- Gazara RK, Moharana KC, Bellieny-Rabelo D, Venancio TM. 2018.** Expansion and diversification of the gibberellin receptor GIBBERELLIN INSENSITIVE DWARF1 (GID1) family in land plants. *Plant Molecular Biology* **97**(4–5):435–449 DOI [10.1007/s11103-018-0750-9](https://doi.org/10.1007/s11103-018-0750-9).
- Gong X, Flores-Vergara MA, Hong JH, Chu H, Lim J, Franks RG, Liu Z, Xu J. 2016.** SEUSS integrates gibberellin signaling with transcriptional inputs from the SHR-SCR-SCL3 module to regulate middle cortex formation in the *Arabidopsis* root. *Plant Physiology* **170**:1675–1683 DOI [10.1104/pp.15.01501](https://doi.org/10.1104/pp.15.01501).
- Grimplet J, Agudelo-Romero P, Teixeira RT, Martinez-Zapater JM, Fortes AM. 2016.** Structural and functional analysis of the GRAS gene family in grapevine indicates a role of GRAS proteins in the control of development and stress responses. *Frontiers in Plant Science* **7**:353 DOI [10.3389/fpls.2016.00353](https://doi.org/10.3389/fpls.2016.00353).
- Gu X. 1999.** Statistical methods for testing functional divergence after gene duplication. *Molecular Biology and Evolution* **16**(12):1664–1674 DOI [10.1093/oxfordjournals.molbev.a026080](https://doi.org/10.1093/oxfordjournals.molbev.a026080).
- Gu X, Zou Y, Su Z, Huang W, Zhou Z, Arendsee Z, Zeng Y. 2013.** An update of DIVERGE software for functional divergence analysis of protein family. *Molecular Biology and Evolution* **30**(7):1713–1719 DOI [10.1093/molbev/mst069](https://doi.org/10.1093/molbev/mst069).
- Guo DP, Jiang YT, Zeng GW, Shah GA. 1994.** Stem swelling of stem mustard, as affected by temperature and growth regulators. *Scientia Horticulturae* **60**(1–2):153–160 DOI [10.1016/0304-4238\(94\)90070-1](https://doi.org/10.1016/0304-4238(94)90070-1).
- Guo Y, Wu H, Li X, Li Q, Zhao X, Duan X, An Y, Lv W, An H. 2017.** Identification and expression of GRAS family genes in maize (*Zea mays* L.). *PLOS ONE* **12**:e0185418 DOI [10.1371/journal.pone.0185418](https://doi.org/10.1371/journal.pone.0185418).
- Hakoshima T. 2018.** Structural basis of the specific interactions of GRAS family proteins. *FEBS Letters* **592**(4):489–501 DOI [10.1002/1873-3468.12987](https://doi.org/10.1002/1873-3468.12987).
- Heo JO, Chang KS, Kim IA, Lee MH, Lee SA, Song SK, Lee MM, Lim J. 2011.** Funneling of gibberellin signaling by the GRAS transcription regulator scarecrow-like 3 in the *Arabidopsis* root. *Proceedings of the National Academy of Sciences of the United States of America* **108**(5):2166–2171 DOI [10.1073/pnas.1012215108](https://doi.org/10.1073/pnas.1012215108).
- Hirsch S, Oldroyd GE. 2009.** GRAS-domain transcription factors that regulate plant development. *Plant Signaling & Behavior* **4**(8):698–700 DOI [10.4161/psb.4.8.9176](https://doi.org/10.4161/psb.4.8.9176).
- Huang W, Xian Z, Xia K, Tang N, Li Z. 2015.** Genome-wide identification, phylogeny and expression analysis of GRAS gene family in tomato. *BMC Plant Biology* **15**:209 DOI [10.1186/s12870-015-0590-6](https://doi.org/10.1186/s12870-015-0590-6).

- Itoh H, Shimada A, Ueguchi-Tanaka M, Kamiya N, Hasegawa Y, Ashikari M, Matsuoka M. 2005.** Overexpression of a GRAS protein lacking the DELLA domain confers altered gibberellin responses in rice. *The Plant Journal* **44**(4):669–679 DOI [10.1111/j.1365-3113.2005.02562.x](https://doi.org/10.1111/j.1365-3113.2005.02562.x).
- Kami C, Lorrain S, Hornitschek P, Fankhauser C. 2010.** Light-regulated plant growth and development. *Current Topics in Developmental Biology* **91**:29–66 DOI [10.1016/S0070-2153\(10\)91002-8](https://doi.org/10.1016/S0070-2153(10)91002-8).
- Kepinski S. 2006.** Integrating hormone signaling and patterning mechanisms in plant development. *Current Opinion in Plant Biology* **9**(1):28–34 DOI [10.1016/j.pbi.2005.11.001](https://doi.org/10.1016/j.pbi.2005.11.001).
- Kim J, Yi H, Choi G, Shin B, Song PS, Choi G. 2003.** Functional characterization of phytochrome interacting factor 3 in phytochrome-mediated light signal transduction. *The Plant Cell* **15**:2399–2407 DOI [10.1105/tpc.014498](https://doi.org/10.1105/tpc.014498).
- Kong H, Landherr LL, Frohlich MW, Leebens-Mack J, Ma H, DePamphilis CW. 2007.** Patterns of gene duplication in the plant SKP1 gene family in angiosperms: evidence for multiple mechanisms of rapid gene birth. *The Plant Journal* **50**(5):873–885 DOI [10.1111/j.1365-3113.2007.03097.x](https://doi.org/10.1111/j.1365-3113.2007.03097.x).
- Lee MH, Kim B, Song SK, Heo JO, Yu NI, Lee SA, Kim M, Kim DG, Sohn SO, Lim CE, Chang KS, Lee MM, Lim J. 2008.** Large-scale analysis of the GRAS gene family in *Arabidopsis thaliana*. *Plant Molecular Biology* **67**(6):659–670 DOI [10.1007/s11103-008-9345-1](https://doi.org/10.1007/s11103-008-9345-1).
- Lichtarge O, Bourne HR, Cohen FE. 1996.** An evolutionary trace method defines binding surfaces common to protein families. *Journal of Molecular Biology* **257**(2):342–358 DOI [10.1006/jmbi.1996.0167](https://doi.org/10.1006/jmbi.1996.0167).
- Liu PY. 1996.** Origin, evolution, classification and distribution of Chinese mustard. In: *Chinese mustard*. Beijing: China Agriculture Press, 1–26.
- Ma HS, Liang D, Shuai P, Xia XL, Yin WL. 2010.** The salt- and drought-inducible poplar GRAS protein SCL7 confers salt and drought tolerance in *Arabidopsis thaliana*. *Journal of Experimental Botany* **61**(14):4011–4019 DOI [10.1093/jxb/erq217](https://doi.org/10.1093/jxb/erq217).
- McGinnis KM, Thomas SG, Soule JD, Strader LC, Zale JM, Sun TP, Steber CM. 2003.** The *Arabidopsis* SLEEPY1 gene encodes a putative F-box subunit of an SCF E3 ubiquitin ligase. *The Plant Cell* **15**:1120–1130 DOI [10.1105/tpc.010827](https://doi.org/10.1105/tpc.010827).
- Morohashi K, Minami M, Takase H, Hotta Y, Hiratsuka K. 2003.** Isolation and characterization of a novel GRAS gene that regulates meiosis-associated gene expression. *The Journal of Biological Chemistry* **278**:20865–20873 DOI [10.1074/jbc.M301712200](https://doi.org/10.1074/jbc.M301712200).
- Murase K, Hirano Y, Sun TP, Hakoshima T. 2008.** Gibberellin-induced DELLA recognition by the gibberellin receptor GID1. *Nature* **456**:459–463 DOI [10.1038/nature07519](https://doi.org/10.1038/nature07519).
- Nagaharu U. 1935.** Genome analysis in Brassica with special reference to the experimental formation of *B. napus* and peculiar mode of fertilization. *Japanese Journal of Botany* **7**:389–452.
- Nakano T, Suzuki K, Fujimura T, Shinshi H. 2006.** Genome-wide analysis of the ERF gene family in *Arabidopsis* and rice. *Plant Physiology* **140**:411–432 DOI [10.1104/pp.105.073783](https://doi.org/10.1104/pp.105.073783).

- Oh E, Yamaguchi S, Hu J, Yusuke J, Jung B, Paik I, Lee HS, Sun TP, Kamiya Y, Choi G. 2007. PIL5, a phytochrome-interacting bHLH protein, regulates gibberellin responsiveness by binding directly to the GAI and RGA promoters in *Arabidopsis* seeds. *The Plant Cell* **19**:1192–1208 DOI [10.1105/tpc.107.050153](https://doi.org/10.1105/tpc.107.050153).
- Park J, Nguyen KT, Park E, Jeon JS, Choi G. 2013. DELLA proteins and their interacting ring finger proteins repress gibberellin responses by binding to the promoters of a subset of gibberellin-responsive genes in *Arabidopsis*. *The Plant Cell* **25**:927–943 DOI [10.1105/tpc.112.108951](https://doi.org/10.1105/tpc.112.108951).
- Pfaffl MW. 2001. A new mathematical model for relative quantification in real-time RT-PCR. *Nucleic Acids Research* **29**:e45 DOI [10.1093/nar/29.9.e45](https://doi.org/10.1093/nar/29.9.e45).
- Pysh LD, Wysocka-Diller JW, Camilleri C, Bouchez D, Benfey PN. 1999. The GRAS gene family in *Arabidopsis*: sequence characterization and basic expression analysis of the SCARECROW-LIKE genes. *The Plant Journal* **18**(1):111–119 DOI [10.1046/j.1365-313X.1999.00431.x](https://doi.org/10.1046/j.1365-313X.1999.00431.x).
- Qi XH, Zhang MF, Yang JH. 2007. Molecular phylogeny of Chinese vegetable mustard (*Brassica juncea*, based on the internal transcribed spacers (ITS) of nuclear ribosomal DNA. *Genetic Resources and Crop Evolution* **54**(8):1709–1716 DOI [10.1007/s10722-006-9179-0](https://doi.org/10.1007/s10722-006-9179-0).
- Rombauts S, Dehais P, Van Montagu M, Rouze P. 1999. PlantCARE, a plant cis-acting regulatory element database. *Nucleic Acids Research* **27**(1):295–296 DOI [10.1093/nar/27.1.295](https://doi.org/10.1093/nar/27.1.295).
- Saeed AI, Sharov V, White J, Li J, Liang W, Bhagabati N, Braisted J, Klapa M, Currier T, Thiagarajan M, Sturn A, Snuffin M, Rezantsev A, Popov D, Ryltsov A, Kostukovich E, Borisovsky I, Liu Z, Vinsavich A, Trush V, Quackenbush J. 2003. TM4: a free, open-source system for microarray data management and analysis. *Biotechniques* **34**(2):374–378 DOI [10.2144/03342mt01](https://doi.org/10.2144/03342mt01).
- Schulze S, Schäfer BN, Parizotto EA, Voinnet O, Theres K. 2010. LOST MERISTEMS genes regulate cell differentiation of central zone descendants in *Arabidopsis* shoot meristems. *The Plant Journal* **64**(4):668–678 DOI [10.1111/j.1365-313X.2010.04359.x](https://doi.org/10.1111/j.1365-313X.2010.04359.x).
- Shi H, Wang LL, Sun LT, Dong LL, Liu B, Chen LP. 2012. Cell division and endoreduplication play important roles in stem swelling of tuber mustard (*Brassica juncea* Coss. var. *tumida* Tsen et Lee). *Plant Biology* **14**(6):956–963 DOI [10.1111/j.1438-8677.2012.00580.x](https://doi.org/10.1111/j.1438-8677.2012.00580.x).
- Song XM, Liu TK, Duan WK, Ma QH, Ren J, Wang Z, Li Y, Hou XL. 2014. Genome-wide analysis of the GRAS gene family in Chinese cabbage (*Brassica rapa* ssp. *pekinensis*). *Genomics* **103**(1):135–146 DOI [10.1016/j.ygeno.2013.12.004](https://doi.org/10.1016/j.ygeno.2013.12.004).
- Sun H, Merugu S, Gu X, Kang Y, Dickinson DP, Callaerts P, Li WH. 2002. Identification of essential amino acid changes in paired domain evolution using a novel combination of evolutionary analysis and *in vitro* and *in vivo* studies. *Molecular Biology and Evolution* **19**(9):1490–1500 DOI [10.1093/oxfordjournals.molbev.a004212](https://doi.org/10.1093/oxfordjournals.molbev.a004212).
- Suzuki H, Park SH, Okubo K, Kitamura J, Ueguchi-Tanaka M, Iuchi S, Katoh E, Kobayashi M, Yamaguchi I, Matsuoka M, Asami T, Nakajima M. 2009. Differential expression and affinities of *Arabidopsis* gibberellin receptors can explain variation

- in phenotypes of multiple knock-out mutants. *The Plant Journal* **60**(1):48–55
DOI [10.1111/j.1365-313X.2009.03936.x](https://doi.org/10.1111/j.1365-313X.2009.03936.x).
- Tian C, Wan P, Sun S, Li J, Chen M. 2004.** Genome-wide analysis of the GRAS gene family in rice and *Arabidopsis*. *Plant Molecular Biology* **54**(4):519–532
DOI [10.1023/B:PLAN.0000038256.89809.57](https://doi.org/10.1023/B:PLAN.0000038256.89809.57).
- Torres-Galea P, Hirtreiter B, Bolle C. 2013.** Two GRAS proteins, SCARECROW-LIKE21 and PHYTOCHROME A SIGNAL TRANSDUCTION1, function cooperatively in phytochrome A signal transduction. *Plant Physiology* **161**:291–304
DOI [10.1104/pp.112.206607](https://doi.org/10.1104/pp.112.206607).
- Torres-Galea P, Huang LF, Chua NH, Bolle C. 2006.** The GRAS protein SCL13 is a positive regulator of phytochrome-dependent red light signaling, but can also modulate phytochrome A responses. *Molecular Genetics and Genomics* **276**(1):13–30
DOI [10.1007/s00438-006-0123-y](https://doi.org/10.1007/s00438-006-0123-y).
- Trapnell C, Williams BA, Pertea G, Mortazavi A, Kwan G, Van Baren MJ, Salzberg SL, Wold BJ, Pachter L. 2010.** Transcript assembly and quantification by RNA-Seq reveals unannotated transcripts and isoform switching during cell differentiation. *Nature Biotechnology* **28**:511–515 DOI [10.1038/nbt.1621](https://doi.org/10.1038/nbt.1621).
- Ueguchi-Tanaka M, Ashikari M, Nakajima M, Itoh H, Katoh E, Kobayashi M, Chow TY, Hsing YI, Kitano H, Yamaguchi I, Matsuoka M. 2005.** GIBBERELLIN INSENSITIVE DWARF1 encodes a soluble receptor for gibberellin. *Nature* **437**:693–698
DOI [10.1038/nature04028](https://doi.org/10.1038/nature04028).
- Wang YX, Liu ZW, Wu ZJ, Li H, Wang WL, Cui X, Zhuang J. 2018.** Genome-wide identification and expression analysis of GRAS family transcription factors in tea plant (*Camellia sinensis*). *Scientific Reports* **8**:3949 DOI [10.1038/s41598-018-22275-z](https://doi.org/10.1038/s41598-018-22275-z).
- Wang Y, Shi S, Zhou Y, Zhou Y, Yang J, Tang X. 2016.** Genome-wide identification and characterization of GRAS transcription factors in sacred lotus (*Nelumbo nucifera*). *PeerJ* **4**:e2388 DOI [10.7717/peerj.2388](https://doi.org/10.7717/peerj.2388).
- Xu K, Chen S, Li T, Ma X, Liang X, Ding X, Liu H, Luo L. 2015.** OsGRAS23, a rice GRAS transcription factor gene, is involved in drought stress response through regulating expression of stress-responsive genes. *BMC Plant Biology* **15**:141
DOI [10.1186/s12870-015-0532-3](https://doi.org/10.1186/s12870-015-0532-3).
- Yang J, Liu D, Wang X, Ji C, Cheng F, Liu B, Hu Z, Chen S, Pental D, Ju Y, Yao P, Li X, Xie K, Zhang J, Wang J, Liu F, Ma W, Shopan J, Zheng H, Mackenzie SA, Zhang M. 2016.** The genome sequence of allopolyploid *Brassica juncea* and analysis of differential homoeolog gene expression influencing selection. *Nature Genetics* **48**:1225–1232 DOI [10.1038/ng.3657](https://doi.org/10.1038/ng.3657).
- Yang J, Zhang C, Zhao N, Zhang L, Hu Z, Chen S, Zhang M. 2018.** Chinese root-type mustard provides phylogenomic insights into the evolution of the multi-use diversified allopolyploid *Brassica juncea*. *Molecular Plant* **11**(3):512–514
DOI [10.1016/j.molp.2017.11.007](https://doi.org/10.1016/j.molp.2017.11.007).
- Yoon EK, Dhar S, Lee MH, Song JH, Lee SA, Kim G, Jang S, Choi JW, Choe JE, Kim JH, Lee MM, Lim J. 2016.** Conservation and diversification of the SHR-SCR-SCL23

regulatory network in the development of the functional endodermis in *Arabidopsis* shoots. *Molecular Plant* **9**(8):1197–1209 DOI [10.1016/j.molp.2016.06.007](https://doi.org/10.1016/j.molp.2016.06.007).

Yuan Y, Fang L, Karungo SK, Zhang L, Gao Y, Li S, Xin H. 2016. Overexpression of VaPAT1, a GRAS transcription factor from *Vitis amurens*, confers abiotic stress tolerance in *Arabidopsis*. *Plant Cell Reports* **35**(3):655–666 DOI [10.1007/s00299-015-1910-x](https://doi.org/10.1007/s00299-015-1910-x).

Zentella R, Zhang ZL, Park M, Thomas SG, Endo A, Murase K, Fleet CM, Jikumaru Y, Nambara E, Kamiya Y, Sun TP. 2007. Global analysis of della direct targets in early gibberellin signaling in *Arabidopsis*. *The Plant Cell* **19**:3037–3057 DOI [10.1105/tpc.107.054999](https://doi.org/10.1105/tpc.107.054999).