



## UNDERSTANDING TISSUE-ENGINEERED ENDOCHONDRAL OSSIFICATION; TOWARDS IMPROVED BONE FORMATION

C. Knuth<sup>1</sup>, C. Kiernan<sup>2</sup>, E. Wolvius<sup>1</sup>, R. Narcisi<sup>3</sup> and E. Farrell<sup>1,\*</sup>

<sup>1</sup>Department of Oral and Maxillofacial Surgery, Orthodontics and Special Dental Care, Erasmus MC, University Medical Centre Rotterdam, Rotterdam, the Netherlands

<sup>2</sup>Department of Immunology, Erasmus MC, University Medical Centre Rotterdam, Rotterdam, the Netherlands

<sup>3</sup>Department of Orthopaedics, Erasmus MC, University Medical Centre Rotterdam, Rotterdam, the Netherlands

### Abstract

Endochondral ossification (EO) is the process by which the long bones of the body form and has proven to be a promising method in tissue engineering for achieving cell-mediated bone formation. The present review centred on state-of-the-art research pertaining to mesenchymal stem cells (MSCs)-mediated endochondral bone formation, focusing on the role of donor cells, extracellular matrix and host immune cells during tissue-engineered bone formation. Possible research avenues to improve graft outcome and bone output were highlighted, as well as emerging research that, when applied to tissue-engineered bone grafts, offers new promise for improving the likelihood of such grafts transition from bench to bedside.

**Keywords:** Endochondral ossification, bone tissue engineering, regenerative medicine, mesenchymal stem cell differentiation, extracellular matrix, vascularisation, collagen type X, immune system.

**\*Address for correspondence:** Eric Farrell B.A. Mod. Physiol, PhD, Principal Investigator Bone Tissue Engineering Research Group, Department of Oral and Maxillofacial Surgery, Special Dental Care and Orthodontics, Erasmus University Medical Centre Rotterdam, Postbox 2040, 3000 CA Rotterdam, the Netherlands.

Telephone number: +31 107043655 Email: [e.farrell@erasmusmc.nl](mailto:e.farrell@erasmusmc.nl)

**Copyright policy:** This article is distributed in accordance with Creative Commons Attribution Licence (<http://creativecommons.org/licenses/by-sa/4.0/>).

### List of Abbreviations

ALP	alkaline phosphatase	HMGB1	high mobility group box 1
ANG1	angiopoietin 1	HSPG	heparin sulphate proteoglycan
BMP2	bone morphogenetic protein 2	Ihh	Indian hedgehog homologue
CCN2	cellular communication network factor 2	IL	interleukin
COLX	collagen type X	IMO	intramembranous ossification
CTACK	cutaneous T-cell attracting chemokine	KO	knock-out
CTGF	connective tissue growth factor	MHC	major histocompatibility complex
DCs	dendritic cells	MMPs	matrix metalloproteinases
ECM	extracellular matrix	MSC	mesenchymal stem cell/marrow stromal cell
EO	endochondral ossification	NK	natural killer
FGF	fibroblast growth factor	PDGFA	platelet-derived growth factor subunit A
GAG	glycosaminoglycan	PLGA	poly(D,L-lactic-co-glycolic acid)
GDF5	growth and differentiation factor 5	PRP	platelet-rich plasma
hPLAP	human placental alkaline phosphatase	PTHrP	parathyroid hormone-related protein
		RANKL	receptor activator of nuclear factor kappa-B ligand

Runx2	runt-related transcription factor 2
SMCD	Schmid metaphyseal chondrodysplasia disorder
TERM	tissue engineering and regenerative medicine
Tg	transgenic
TGF	transforming growth factor
TNF $\alpha$	tumour necrosis factor alpha
VEGF	vascular endothelial growth factor
WNT	wingless-type MMTV integration site family

## Introduction

Bone has an inherent ability to repair itself following small injuries (Schindeler *et al.*, 2008). However, when a critical-size defect exists, or is created following surgery, the bone regenerative capacity is exhausted, making clinical intervention necessary. As a result, bone is one of the most commonly transplanted tissues in the world (Petite *et al.*, 2000). Autologous bone grafts are the current gold-standard treatment option for such defects as they are a natural osteoinductive/osteoconductive material (Frohlich *et al.*, 2008; Lieberman and Friedlaender, 2005) with low risk of immune rejection (Bauer and Muschler, 2000). Although roughly 90 % of autologous grafts are considered to be successful (Bauer and Muschler, 2000; Hayden *et al.*, 2012), their use is limited due to the availability of harvestable material, uncertain integration following implantation and risk of donor site morbidity (Bauer and Muschler, 2000). Although allogeneic and xenogeneic grafts are available, they are associated with other risks, including disease transfer or immunological rejection (Gómez-Barrena *et al.*, 2015). Common complications associated with bone grafts – regardless if autologous, allogeneic or xenogeneic – include insufficient vascularisation at the implant site, leading to poor nutrient/oxygen delivery, cell death and core necrosis (Frohlich *et al.*, 2008; Lieberman and Friedlaender, 2005). This highlights a clear and present need for new suitable graft alternatives.

TERM-based approaches to bone repair vary greatly (Grskovic *et al.*, 2012). Bioactive or inert materials (Table 1), which should enhance bone regeneration by guided tissue regeneration, are currently being developed. Although promising, many of these materials and other TERM approaches also rely on the use of iliac crest bone, which does not address the many issues surrounding the use of autologous bone. The use of various adult progenitor cells to create cell-based alternatives recapitulating one of the developmental pathways of bone formation to achieve bone regeneration and repair of critical-size bone defects has received much attention in recent decades. This review focuses on the state-of-the-art strategies implemented in cell-based TERM and on considerations for improved bone regeneration and output.

## Cell-based strategies for bone repair; endochondral vs. intramembranous ossification

Bone develops through either IMO (Kim *et al.*, 2011) or EO (Shapiro, 2008; Yang *et al.* 2009). IMO involves the direct differentiation of mesenchymal cells to osteoblasts, the process by which most facial bones are formed (Thompson *et al.*, 2002). IMO can be achieved in TERM by either direct differentiation or through the combination of MSCs with biomaterials (including, but not limited to, tricalcium phosphate or collagen sponges) (Meijer *et al.*, 2008). Although promising, this approach has not reached its full potential due to insufficient vascularisation of the implant, resulting in core necrosis (Chatterjea *et al.*, 2010; Meijer *et al.*, 2008). Vascularisation is crucial for graft survival and is required for proper integration with the patient's existing bones. Instead, EO is a more promising model for bone formation as it naturally induces vascularisation at the implant site (Cervantes-Diaz *et al.*, 2017; Gawlitta *et al.*, 2010; Mackie *et al.*, 2008; Medici and Olsen, 2012; Thompson *et al.*, 2015; Yeung Tsang *et al.*, 2014).

EO relies on the establishment of a cartilage template, which is achieved by condensation and differentiation of mesenchymal cells (Mackie *et al.* 2008). Chondrocytes within the template exhibit a zonal distribution, with clear divisions between the different stages of chondrocyte differentiation within the template. Resting chondrocytes display a seemingly sporadic distribution and are thought to maintain a population of cells which, when triggered, give rise to the more organised, disk-like proliferating chondrocytes (Schrier *et al.*, 2006; Yang *et al.*, 2003). Proliferating chondrocytes contribute to longitudinal bone growth and are regulated by a complicated feedback loop, including factors such as TGF $\beta$ , PTHrP and Ihh (Chen *et al.*, 2008; Kronenberg *et al.*, 2003). These factors are also involved in initiating hypertrophic differentiation. When hypertrophic differentiation starts, chondrocytes secrete factors to recruit other cell types critical for successful EO (Ballock *et al.*, 2003; Kronenberg *et al.*, 2003) (Fig. 1). For example, factors such as ANG-1, PDGFA and VEGF will aid in the recruitment of the nearby vasculature to the cartilage template (Colnot *et al.*, 2001), which will ultimately result in the delivery of pre-osteoblastic cells to the cartilage template (Maes *et al.*, 2010). Factors released by the hypertrophic chondrocytes, including MMPs and other proteolytic enzymes, will contribute to early matrix remodelling (Nishimura *et al.*, 2012); release of RANKL and VEGF will recruit osteoclasts, which further contribute to proper matrix remodelling (Engsig *et al.*, 2000). Together, osteoblasts delivery through the invaded vasculature, trans-differentiation of chondrocytes in the cartilage template and osteoblast invasion from the surrounding bone collar calcify the cartilage matrix and bone formation occurs (Maes *et al.*, 2010; Yang *et al.*, 2014). The coordination of these events with cell/vascular recruitment ultimately controls effective

**Table 1. Bone-graft-related terminology and definitions/examples.**

Term	Definition	Reference
<b>Osteoinductive material</b>	Can induce osteogenic differentiation of primitive cells; induces bone formation. Process that is observed during bone repair (healing).	Finkemeier, 2002 Lee, 2016
<b>Osteoconductive material</b>	Causes bone formation on the surface of a material; induces migration of bone-forming cells to the surface of the material; observed regularly on bone implants; examples: hydroxyapatite, tricalcium phosphate.	Finkemeier, 2002 Lee, 2016
<b>Inert material</b>	Not chemically active; material does not join/integrate directly with bone; example: titanium, steel.	LeGeros, 2008 Roselló Llabrés <i>et al.</i> ,
<b>Bioactive material</b>	Causes a biological response allowing for tissue bonding to the material; surface reactivity influences ability to bond to bone; example: bioactive glass and ceramics.	Ducheyne <i>et al.</i> , 1999
<b>Allogeneic graft</b>	Tissue or cells obtained from donor material of same species as recipient; osteoinductive and osteoconductive; can be fresh or frozen.	Roselló Llabrés <i>et al.</i> , 2014
<b>Autologous graft</b>	Tissue or cells obtained from patient receiving treatment; osteoinductive and osteoconductive.	Roselló Llabrés <i>et al.</i> , 2014
<b>Xenogenic graft</b>	Tissue or cells obtained from a non-human source; example: bovine, porcine.	Roselló Llabrés <i>et al.</i> , 2014

bone formation in EO. This can be recapitulated in TERM by differentiating MSCs chondrogenically and implanting them subcutaneously either as pellets or seeded in scaffolds (Knuth *et al.*, 2017; Scotti *et al.*, 2010; Tonarelli *et al.*, 2014; van der Stok *et al.*, 2014). This seems to mirror developmental EO and shows excellent integration within the host tissue (Chan *et al.*, 2009). Tissue-engineered EO, utilising MSCs, has been proven as a viable method to achieve bone formation (Dickhut *et al.*, 2009; Hennig *et al.*, 2007; Janicki *et al.*, 2010; Jukes *et al.*, 2008; Karoliina *et al.*, 2008) (Fig. 2). Huang *et al.* (2006) demonstrated the ability of chondrogenically-primed MSCs, loaded into a hyaluronan/gelatine scaffold, to form bone. Bahney *et al.* (2014) and van der Stok *et al.* (2014), each independently, demonstrated how these chondrogenic MSCs could also be used to partially repair a critical-size defect even without a biomaterial support. Interestingly, this has been shown to be specific for chondrogenically-differentiated MSCs, as chondrocytes following expansion and differentiation will not form bone or bone marrow *in vivo* despite similar culture characteristics. Whether this is associated with the developmental origin of these cells or their expression of specific proteins, such as COLX – a hypertrophy-associated collagen not expressed by culture-expanded chondrocytes – is unknown (Hellingman *et al.*, 2011; Peltari *et al.*, 2006; Pleumeekers *et al.*, 2014). It is also possible that chondrocytes do not interact with cells of the host in a similar fashion. In order to develop better TERM approaches to bone defect repair recapitulating EO, understanding how MSC-mediated EO occurs and the kinetics of the process is necessary.

#### **The donor's role: recruitment of the host and long-term involvement**

Induction of vascular invasion, *de novo* formation of a marrow cavity and osteoclast activity observed in tissue-engineered constructs have demonstrated that endogenous host cells have a role in new-bone formation (Farrell *et al.*, 2011; Tasso *et al.*, 2009; Tasso *et al.*, 2010; Tortelli *et al.*, 2010). Donor MSCs directly contribute to bone-forming cell populations in TERM EO. Using cell-labelling methods, implanted chondrogenically-differentiated MSCs have been shown to persist within the bone matrix and contribute directly to bone formation (Bahney *et al.*, 2014; Farrell *et al.*, 2011; Scotti *et al.*, 2013). Farrell *et al.* (2011) suggested that the initial bone formation is mediated by donor MSCs. Using immunocompetent transgenic rats overexpressing hPLA, donor cells were tracked following implantation into syngeneic wild type rats. A mixed population of both positive and negative hPLAP cells found embedded within the bone matrix demonstrated that cells were of both donor and host origin. Scotti *et al.* (2013) further suggested that donor cells that persist in the newly formed bone may have undergone trans-differentiation to osteoblast-like cells. They reported that donor and host bone have a zonal distribution. Host cells contribute to bone formation in the outer periphery of the implant and donor cells in the central portion (Scotti *et al.*, 2013). Although Scotti *et al.* (2013) hypothesised that over time these donor cells would be replaced by host cells, Bahney *et al.* (2014) suggested that most of the bone formation is donor-derived. This research contrasts with the developmental situation where it is

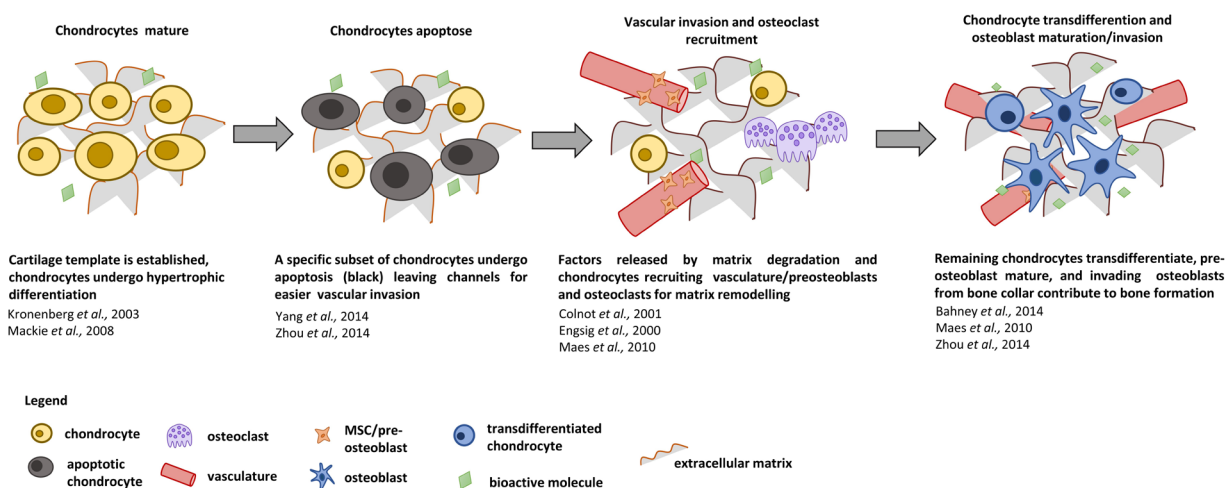
believed that following hypertrophic differentiation of chondrocytes, apoptosis is their only fate, as shown in previous avian-based research (Gibson *et al.*, 1995). Recently, this theory has been challenged. Studies in development, fracture repair and TERM showed that hypertrophic chondrocytes do not all undergo apoptosis. Rather, a subset of them are plastic and capable of transdifferentiating into osteoblasts or osteoblast-like cells, further aiding in the process of bone formation (Bahney *et al.*, 2014; Yang *et al.*, 2014; Zhou *et al.*, 2014). From a developmental point of view, Yang *et al.* (2014) showed that these transdifferentiated hypertrophic chondrocytes persist throughout development, being present not only in foetal bone but also in the bone of adult mice. These finds have changed how researchers view bone homeostasis in development and in TERM since chondrocytes do contribute to bone formation. In tissue engineering, there is a trend towards development of acellular grafts which are, indeed, attractive from a clinical perspective. However, knowing that implanted cells play an important role in bone formation, it may be necessary to rethink such approaches in order to maximise bone output. Certainly, in more challenging clinical situations.

### The role of the ECM in MSC-mediated EO

During chondrogenic differentiation of MSCs, a bioactive matrix is produced which can greatly influence EO *in vivo*. Studies have suggested that the quality of the pre-implantation matrix influences *in vivo* bone formation. Scotti *et al.* (2010) reported that after longer priming, more chondrogenic induction and GAG production is achieved, resulting in better

bone formation following implantation. Knuth *et al.* (2017) reported how stronger chondrogenic induction can influence *in vivo* bone formation; however, they hypothesised that a more GAG-rich matrix delays bone marrow formation due to delayed remodelling. Perhaps this indicates that parameters, using ECM components produced by chondrogenically-differentiated MSCs, can be set to assess bone formation; nevertheless, performing this without destroying the pellet would be difficult. Recently, Correa *et al.* (2015) have suggested that chondrogenic potential can be influenced through the addition of certain FGFs which modulate TGF $\beta$  receptors, in turn altering GAG concentration. If so, researchers could utilise this approach to alter GAG production within the pre-implantation constructs. However, research in this area has yielded conflicting data and how TGF $\beta$  receptor modulation influence ECM production by MSCs is still an area of ongoing investigation (Correa *et al.*, 2015; de Kroon *et al.*, 2015).

When trying to further understand how the ECM influences EO, valuable insight comes also from the use of chondrogenically-differentiated MSCs, not to achieve EO but as a tissue engineering cartilage replacement. Chondrocytes formed through differentiation of MSCs as compared to native chondrocytes exhibit clear differences in structure, ECM deposition, cellular phenotypes and mechanical properties (as reviewed by Somoza *et al.*, 2018). Researchers are investigating how they can prevent tissue-engineering MSC cartilage constructs from forming bone *in vivo*. For instance, suppression of canonical WNT signalling during chondrogenic differentiation results in less hypertrophic constructs, containing less COLX in the ECM, which has a negative effect on bone formation *in vivo* (Narcisi *et*



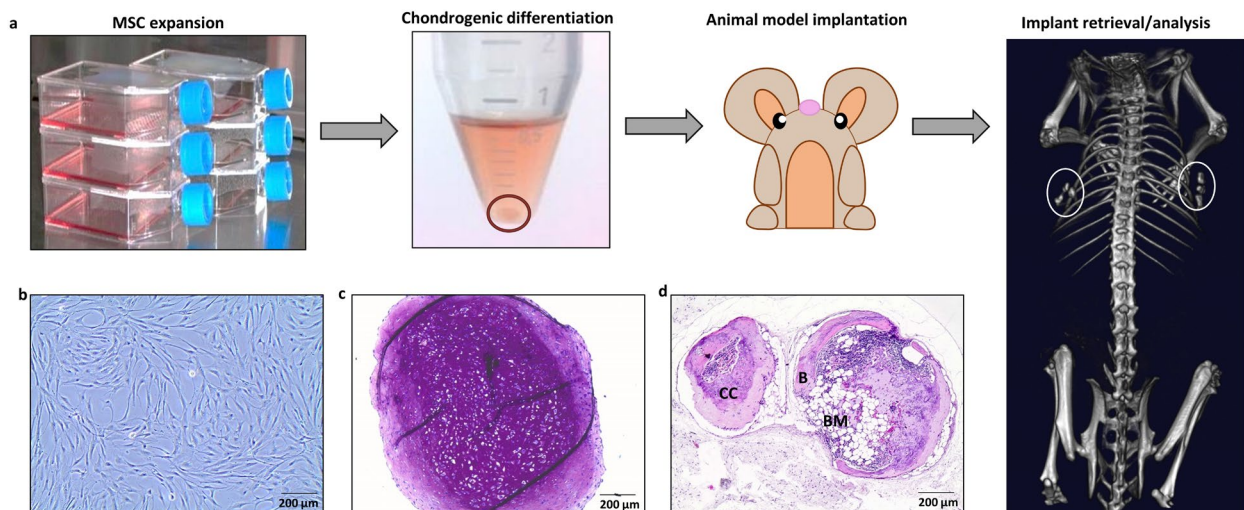
**Fig. 1. Snapshot of cellular invasion and behaviour during developmental EO.** Following the establishment of the cartilage template, a specific subset of hypertrophic chondrocytes undergoes apoptosis. This creates space for the nearby vasculature to invade and release bioactive molecules within the matrix. At the same time, pericytic-like pre-osteoblasts, attached to the side of the vasculature, invade it by passive migration. Factors released from the degraded ECM further aid in the recruitment of matrix-remodelling osteoclasts. The non-apoptotic chondrocytes found within the matrix are capable of trans-differentiating into osteoblast-like cells that, in combination with mature osteoblasts, contribute to bone formation.

*al.*, 2015). This may indicate that, for improved bone formation, the enhancement of the WNT signalling pathway during chondrogenic differentiation would have a beneficial effect on ECM and cell behaviour for bone repair. Importantly, Narcisi *et al.* (2015) also highlighted the importance of hypertrophic differentiation for the induction of bone formation with MSC-based endochondral grafts.

Developmentally, hypertrophic differentiation precedes mineralisation and, during this phase, 45 % of the collagens produced is COLX (Luvalle *et al.*, 1992). COLX adds to the structural stability in the surrounding pericellular network of hypertrophic chondrocytes (Schmid and Linsenmayer, 1985; Shen, 2005) but, from a bone formation stand point, its role can be more clearly seen in Tg and KO studies. In such studies, perinatal death is reported in the absence of COLX (around 25 % in Tg mice and 10 % in KO mice), with the surviving mice exhibiting a range of phenotypes including dwarfism, skeletal abnormalities, defective haematopoiesis or normal phenotype (Campbell *et al.*, 2004; Jacenko *et al.*, 2001; Jacenko *et al.*, 2002; Kwan *et al.*, 1997). The absence of COLX has an impact on the normal skeletal development in mice, but the exact mechanisms contributing to each of these abnormalities needs to be further explored to truly understand how COLX contributes to bone formation and the supportive role it plays during the process. In the absence of COLX, abnormal GAG distribution and decreased HSPG content around hypertrophic chondrocytes is reported (Jacenko *et al.*, 2001). Proper proteoglycan distribution throughout the remodelled matrix is essential as it not only plays a role in stabilising the

ECM, but also regulates the availability of growth factors trapped within the matrix that are crucial for EO, contributing to induction of blood vessel invasion and attraction of matrix remodelling cells, such as osteoclasts, in a timely manner (Kim *et al.*, 2011; Yang *et al.*, 2012). Proper ECM arrangement is not only important with regards to the above-mentioned aspects but also for proper placement of smaller structures, such as matrix vesicles.

Matrix vesicles are small structures that bud from the membrane of chondrocytes, osteoblasts and other cells. These structures carry with them, among other things, a collection of bioactive enzymes, proteins and phospholipids, specific to the cell they are produced from, that are important in the initiation of calcification (Anderson *et al.*, 2005; Golub, 2009; Lohan *et al.*, 2017). Matrix vesicles become entrapped in the ECM and help attract cells through their content (*i.e.* VEGF to attract blood vessels, BMPs to attract osteoblasts, *etc.*), making their point of anchoring and zonal distribution crucial for proper cell recruitment to the correct area (Kirsch *et al.*, 2000; Nahar *et al.*, 2008). Research has focussed on the interactions between COLX and annexin V, which is found on matrix vesicles. Annexin V facilitates calcium influx into matrix vesicles, which is important for the initiation of biomineralisation within the vesicles, in turn influencing matrix mineralisation and bone formation. COLX can selectively bind to annexin V, initiating this influx of calcium into the matrix vesicles (Kirsch and Pfäffle, 1992; Wu *et al.*, 1991). Others reported that when COLX is absent, vesicle distribution throughout the matrix is disrupted and subsequent bone formation is stunted (Kwan



**Fig. 2. Achieving tissue engineered EO.** (a) MSCs are expanded to reach the required cell number through cell passage. Then, MSCs are chondrogenically-differentiated, usually through the addition of TGF $\beta$ , dexamethasone and vitamin C (here a chondrogenic pellet is shown in the red circle). Following differentiation, the resulting chondrocytes are implanted in an animal model for a predetermined time. Following implantation, the resulting construct can be retrieved and analysed (constructs in white circles). (b) Representative MSCs during expansion phase. (c) A representative thionine staining of MSCs chondrogenically-differentiated for 21 d through pellet culture. (d) Haemotoxylin and eosin staining showing representative bone formed from chondrogenically-differentiated MSCs after 8 weeks of subcutaneous implantation in nude mice (B-bone, CC-calcified cartilage, BM-bone marrow).

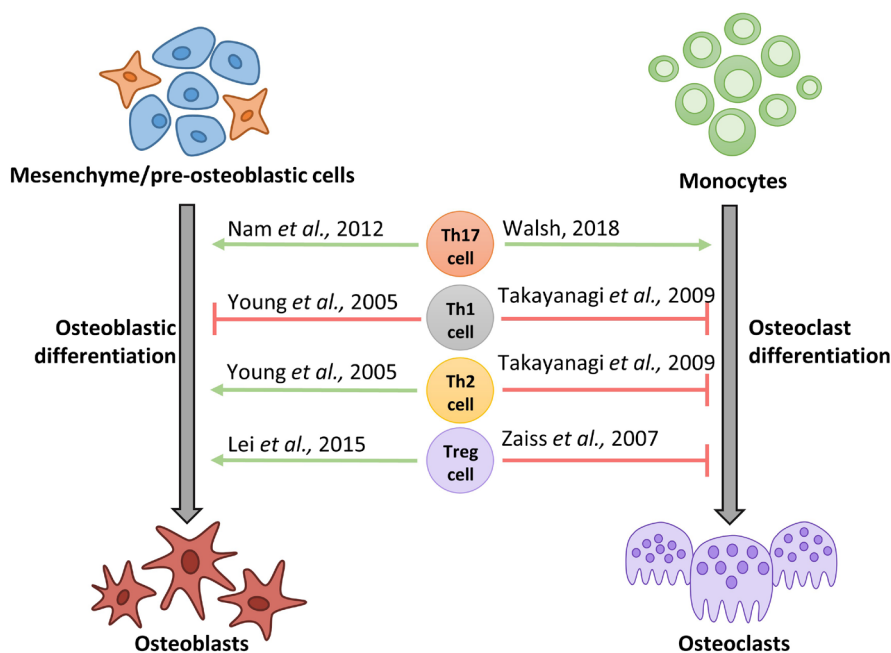
*et al.*, 1997; Wu *et al.*, 1991). This is alarming and shows that proper placement of matrix vesicles is required for cell attraction to the proper site of bone formation. However, this conclusion is challenged by others in the field who found that knocking out annexin V results in no change in mineralisation or bone formation (Grskovic *et al.*, 2012). Although initially these results appear to be contradictory, there could be a simple explanation. COLX plays a role in supporting and maintaining ECM proteoglycan and collagen organisation. When COLX is absent, these are no longer properly organised. Matrix vesicles also associate with the hyaluronic-acid-binding region found in proteoglycans, which can also result in calcium influx (Wu *et al.*, 1991). If COLX is absent, matrix vesicles can possibly associate more strongly with proteoglycans, allowing them to be entrapped in the matrix, possibly no longer specifically, at the border of the chondro-osseous junction, but still able to initiate mineralisation, thus allowing bone formation to still take place.

EO also influences proper development of the bone marrow niche and proper haematopoiesis, which studies have suggested is also partially regulated by COLX. Cytokines, chemokines and growth factors bind and interact with HSPG, in part regulating or controlling an immune response (Sweeney *et al.*, 2008; Wu *et al.*, 1991). COLX decrease correlates with a decrease in HSPG and a dysregulation of the immune system of Tg mice. Additionally, an increase in factors that play a role in regulating immune responses – including IL-4, IL-12, CTACK and leptin, which all bind to HSPG – and major changes to the immune system itself are shown. Mice with defective or missing COLX often have a severely decreased immune cell count. Although the immune cells that remain in the mouse often function properly, the immune response they elicit cannot be controlled, ultimately leading to death in immune-

challenge studies (Sweeney *et al.*, 2008). When mice with defective/missing COLX are challenged with an opportunistic parasite, they can initially clear the parasitic infection but do not recover and ultimately die. *Post-mortem* investigation shows enlarged livers and increased parasite cysts in the brain, liver and lungs, both indicative of a malfunctioned immune response (Sweeney *et al.*, 2008). With a decreased HSPG count and an increased production of immune factors, the body is unable to regulate the response properly. Researchers have argued over the importance of COLX in regulating the immune response, as conflicting results have been shown (Kwan *et al.*, 1997; Rosatil *et al.*, 1994). However, the differences observed between researchers may also come down to the genetic profile of the models they used.

### Osteoimmunology from a tissue engineering perspective

In large bone defects, the cells of the immune system play an important role. The complex interaction between cells of the skeletal system and the immune system is critical for successful bone repair and is initiated by an inflammatory response to the damaged tissue (Dar *et al.*, 2018; Kolar *et al.*, 2010; Mountziaris and Mikos, 2008; Pape *et al.*, 2010). This leads to the secretion of pro-inflammatory cytokines, including TNF $\alpha$ , IL-6 and IL-1 $\beta$  (Gerstenfeld *et al.*, 2003; Mountziaris and Mikos, 2008). These cytokines can induce angiogenesis and attract cells of the innate immune response (monocytes, macrophages, DCs, neutrophils and NK cells). Subsequently, those cells release specific cytokines and growth factors which attract cells of the adaptive immune system (T and B cells) (Kovach *et al.*, 2015). Immune cells are not the only cells attracted during this inflammatory



**Fig. 3. T cells can influence osteoblastic and osteoclastic maturation.** The release of cytokines and various growth factors during bone formation and fracture repair results in the recruitment of various immune cells which can influence bone formation and remodelling (green arrow: positive influence, red bar line: negative influence).

response. Bone-specific growth factors such as TGF $\beta$  and BMP-2 are also secreted, leading to the recruitment of osteoprogenitor cells (including MSCs) to the site of inflammation (Kovach *et al.*, 2015). The combined expression of growth factors with secretion of inflammatory mediators induces the proliferation and differentiation of osteoprogenitor cells to osteoblasts (Dimitriou *et al.*, 2011; Loi *et al.*, 2016; Mizuno *et al.*, 1990). IMO and EO are the two processes by which osteoprogenitor cells can differentiate to osteoblasts. Unlike in IMO, during EO, the secretion of TGF $\beta$ 2 or 3, BMPs and other signalling molecules, each of which can be influenced by immune cells, leads to the formation of a cartilage template that is replaced by woven bone (Brighton, 1984; Einhorn and Gerstenfeld, 2015; Gerstenfeld *et al.*, 2003; Kolar *et al.*, 2010; Kuntzman, 2010). Most fractures heal through EO and previous studies have demonstrated the importance of the immune system during the repair process; lymphocytes, in particular, are crucial for fracture healing (Schindeler *et al.*, 2008). During bone remodelling, infiltrating T and B cells into the fracture callus are negatively involved in the bone repair process (Konnecke *et al.*, 2014; Young *et al.*, 2005). During bone remodelling, Th1, Th2 and regulatory T cells negatively influence osteoclast maturation; however, Th17 cells show a positive effect on osteoclast formation (Takayanagi, 2009; Walsh *et al.*, 2018; Zaiss *et al.*, 2007). Mice lacking T and B cells appear to have accelerated fracture healing as compared to those with a fully competent immune system (Toben *et al.*, 2011). More specifically, CD8 T cells inhibit fracture repair (Reinke *et al.*, 2013). However, on the other hand, other T cells have varying effects on bone formation/regeneration depending on the studied subtype (Lei *et al.*, 2015; Nam *et al.*, 2012; Young *et al.*, 2005). Collectively, the complex interaction between the immune system and the cells of the skeletal system is critical for the outcome of the bone repair/regeneration as the manipulation of a specific subset of immune cells could greatly impact bone formation.

The use of autologous cells for bone regeneration is ideal due to the lack of immune rejection upon implantation. However, autologous cells have the drawback of the limited quantity of material that can be obtained. Moreover, the material that is obtained is usually of poor quality. This is due to the fact that autologous cell transplantation is generally needed in elderly and diseased patients and, therefore, having cells with poor proliferative and differentiation capacities as compared to those that could be obtained from healthy individuals (Mueller and Glowacki, 2001). Furthermore, treating patients with their own cells can cause a major delay in treatment timetables due to *in vitro* cell manipulations (e.g. expansion and quality control) before cells can be administered back into the patient. Taking this into consideration, new and improved TERM-based approaches to bone repair need to be developed.

The use of allogeneic cells would be preferable as there would be an immediate approved stock of cells ready to treat a patient. This advantage has led to an increased research interest aiming at using allogeneic cells for TERM applications. Research on allogeneic MSCs has demonstrated that they are somewhat immunoevasive, due to low surface expression of costimulatory molecules (e.g. CD80 and CD86) and MHC class II (Aggarwal and Pittenger, 2005; Ankrum *et al.*, 2014; Le Blanc and Ringden, 2007; Nauta and Fibbe, 2007). Such an aspect is advantageous as MSCs will be implanted into an inflammatory environment during fracture repair (Ankrum *et al.*, 2014; Asari *et al.*, 2009; Corcione *et al.*, 2006; Djouad *et al.*, 2007; Jiang *et al.*, 2005; Sotiropoulou *et al.*, 2006; Spaggiari *et al.*, 2009; Spaggiari *et al.*, 2008; Zhao *et al.*, 2012; Zheng *et al.*, 2008). In normal situations, implantation of allogeneic cells would lead to cell rejection by the adaptive immune system. However, allogeneic MSCs can evade the immune response and in some instances avoid rejection upon implantation (Ankrum *et al.*, 2014; Ryan *et al.*, 2005). In studies focussed on the use of allogeneic MSCs for bone repair, the immune response has been shown to play an important role in the process. Bone regeneration induced by allogeneic MSCs is negatively impacted by Th1 cells through the inhibition of osteogenesis-specific gene expression (osteocalcin, Runx2 and ALP) (Dighe *et al.*, 2013). On the other hand, osteogenesis is promoted by Th2, Th17 and regulatory T cells (Kovach *et al.*, 2015; Liu *et al.*, 2011; Omar *et al.*, 2011). While there have been numerous studies on allogeneic undifferentiated MSCs, little investigation has been carried on how the immune system responds to allogeneic MSCs when they are pre-differentiated into another tissue type prior to implantation. Allogeneic undifferentiated MSCs have been shown to be non-immunogenic (Aggarwal and Pittenger, 2005; English, 2013; Gao *et al.*, 2016; Hoogduijn *et al.*, 2010; Nauta and Fibbe, 2007). Due to their immunoevasive nature, they can modify the immune system to their desired purpose. Few studies have investigated the effects of allogeneic chondrogenic MSCs on the immune system. Thus far, results have been conflicting, with reports demonstrating allogeneic chondrogenic MSCs to be both immunogenic (Mukonoweshuro *et al.*, 2014; Ryan *et al.*, 2014) and non-immunogenic (Adkisson *et al.*, 2010; Kiernan *et al.*, 2016; Le Blanc *et al.*, 2003; Zheng *et al.*, 2008).

The contradictory results were highly dependent on how the co-culturing work was performed during the experiments. Even in the *in vivo* setting, little is known about the effects of these pre-differentiated MSCs on the immune system. Kiernan *et al.* (2016) have recently detailed the various studies that have focussed on the interactions between the immune system and allogeneic differentiated MSCs in the context of bone tissue engineering. More recently, the immune-privileged nature of allogeneic MSCs has been called into question. As reviewed by Griffin

*et al.* (2013) and Lohan *et al.* (2017), host responses vary in response to the presence of allogeneic MSCs from minor inflammation to right out rejection. The idea that allogeneic MSCs could be recognised and targeted by the host is concerning for many in the field of tissue engineering. It is clear from these studies that there is more research that needs to be conducted to determine how pre-differentiated MSCs interact with the immune system in an allogeneic setting before these cells can be used clinically. However, it appears increasingly unlikely that MSCs or differentiated MSCs are truly incapable of completely evading the immune system. The question to be answered is whether this is an issue to be concerned about.

### Further considerations, towards improved bone output

MSC-mediated endochondral bone formation has yielded some promising results in animal model defect repair; however, treatment of large bone defects is still problematic. Although Harada *et al.* (2014) showed how chondrogenically-primed rat MSCs could heal a critical-size defect, no other group has demonstrated such large bone defect repair. Although MSC-mediated EO can form bone *in vivo*, the quantity usually formed, outside Harada *et al.* (2014) study, is insufficient to treat large bone defects. From a translational perspective, the volume of chondrogenic MSCs required to properly heal critical-size defects would require unmanageable cell numbers, incubator space, reagents and time to maintain, which would make the cost of such constructs astronomical (Penick *et al.*, 2005; van der Stok *et al.*, 2014). In order to treat large defects, scale-up approaches are necessary to improve bone output.

When considering scaled-up bone formation, the need for successful vascularisation to maintain cell health during regeneration must be considered. As most cells of the body are rarely more than 100–200  $\mu\text{m}$  away from a capillary, due to diffusion limits influencing their behaviour (Biederman-Thorson *et al.*, 2013; Ko *et al.*, 2007), proper vascularisation in TERM constructs is critical. Although chondrocytes are thought to be well suited to survive in the initial defect site, as their true environment is also hypoxic and avascular (Pfander and Gelse, 2007), remodelling, vessel invasion and bone formation introduce new cells with variable oxygen/nutrient requirements into the defect site (Ko *et al.*, 2007), making vascularisation crucial to ensure these cells' survival. In small defect repair, vascularisation occurs rapidly enough to allow graft survival and integration; however, with a large defect, natural vascularisation rates may not be sufficient. Therefore, vascularisation must be induced or compensated for in the initial implanted construct to prevent cell death. Pre-vascularisation of chondrogenic grafts pre-implantation has shown more promising results (Ng *et al.*, 2017; Yousefi *et*

*al.*, 2016). Freeman *et al.* (2015) showed that the pre-vascularisation of chondrogenic MSCs can result in accelerated vascularisation, host cell survival and ossification *versus* non-vascularised counterparts. These constructs were implanted for only 4 weeks but it would be interesting to see how constructs perform following longer *in vivo* implantation or in immunocompetent animals. These studies are promising but special care must be taken when selecting endothelial cell sources since the phenotype of the cell differs depending on the tissue type they are isolated from (Chi *et al.*, 2003; Garlanda and Dejana, 1997). Takigawa (2013) investigated how the addition of biologically relevant compounds known to influence endothelial cell behaviour, such as VEGF, could be utilised for improving graft vascularisation. However, high doses of VEGF result in uncontrollable bone formation, indicating further research is required to make this a more viable option (Maes *et al.*, 2010). By accelerating processes which are known to be important for *in vivo* bone formation, such as vascularisation, it could be possible to, not only improve graft performance, but also increase bone formation, as bone-forming osteocytes can invade the cartilage template migrating through the vasculature (Maes, 2013; Maes *et al.*, 2010). From a TERM approach, pre-vascularising grafts or inducing faster vascularisation is advantageous to not only tackle the issue of poor vascularisation but also to increase bone formation in the process.

Given the complications associated with cell-based approaches for tissue regeneration, there is the attempt to find possible cell-free approaches, which could circumvent these limitations. MSCs used in endochondral tissue engineering bone grafts directly contribute to the bone-forming population (Bahney *et al.*, 2014; Farrell *et al.*, 2011; Mendes *et al.*, 2018; Scotti *et al.*, 2013). Implanted chondrogenically-differentiated MSCs persist within the bone matrix and contribute directly to bone formation, instructing host bone formation throughout the process (Bahney *et al.*, 2014; Farrell *et al.*, 2011; Mendes *et al.*, 2018; Scotti *et al.*, 2013). These studies have suggested that implanted cells are essential for proper bone formation; however, devitalised grafts derived from chondrogenically-differentiated MSCs can also form endochondral bone *in vivo* (Bourgine, 2013; Bourguine *et al.*, 2014a; Bourguine *et al.*, 2014b; Cunniffe *et al.*, 2015). Bourguine *et al.* (2013; 2014a; 2014b) created decellularised grafts which maintain bone formation potential once implanted. They utilised immortalised cell lines – eliminating many of the culture-induced issues associated with MSCs – which are decellularised through activation of an engineered death-inducible receptor within the cell. Once decellularised and implanted, these constructs show promising bone formation ability. Moreover, these immortalised cells could be further manipulated to overexpress factors known to improve bone formation, such as BMP2, which, in turn, would be



incorporated in the ECM and could further improve bone output. Cunniffe *et al.* (2015), following this same line of research, showed that matrices produced specifically by hypertrophic chondrogenically-differentiated MSCs produced significantly more bone than non-hypertrophic matrices, indicating that something not yet identified but produced specifically during hypertrophy could be the key to improved bone formation. Although bone formed by acellular grafts produced significantly less bone volume than cellularised counterparts, these cell-free grafts are still able to recruit host vasculature and cells required for proper bone formation (Bourguine, 2013; Bourguine *et al.*, 2014a). With further optimisation, they could be a promising alternative to current autologous bone grafts. Although decellularised grafts and off-the-shelf treatment options are an ideal solution for tissue engineering, it remains that current cell-based approaches yield better bone formation than acellular counterparts. As such, a popular scale-up approach consists of using growth factors combined with novel biomaterials. Growth factors important for developmental induction of EO, such as BMP-2 (Decambren *et al.*, 2017; Penick *et al.*, 2005; Stüdle *et al.*, 2018), TGF $\beta$  (Mendes *et al.*, 2018; Stüdle *et al.*, 2018), VEGF (Carlevaro *et al.*, 2000; Gerber *et al.*, 1999), PRP (Janssen *et al.*, 2013) as well as potentially novel factors (Fahmy-Garcia *et al.*, 2017) are being characterised to determine if their use in combination with MSCs would improve bone output. The use of these factors has shown variable results, performing as well as, better or worse than iliac crest bone (Janssen *et al.*, 2013). Two drawbacks associated with this approach are that these factors are extremely expensive and are used at supraphysiological levels, which is associated with additional risk. For example, high doses of BMP-2 can cause soft tissue swelling (Shahlaie and Kim, 2008), abnormal excessive bone formation (Zara *et al.*, 2011) and increased cancer risk (Carragee *et al.*, 2013). As such, researchers are also investigating other compounds which are known to be involved in EO and could possibly be used at more physiologically acceptable doses. This includes GDF5. This protein is well known for its role in joint formation, chondrogenesis and hypertrophic differentiation and is also a member of a subgroup of BMPs (Coleman *et al.*, 2013). Other proteins which are more recently identified as being important during EO, including CTGF (also known as CCN2) and HMGB1, have also been investigated as possible additions to improve bone formation as they have shown positive results *in vitro* for improved cell recruitment, vascularisation and osteogenesis (Khatab *et al.*, 2015; Kubota and Takigawa, 2011; Takigawa, 2013; Taniguchi *et al.*, 2007). Such proteins could be used at more physiologically relevant doses as compared to BMP-2 (Fahmy-Garcia *et al.*, 2017). However, even when supraphysiological doses are required, researchers are looking for ways to possibly decrease the effective dosage required to

prevent these unwanted side effects. By coupling or crosslinking factors to matrices, the concentration of these compounds can be reduced to something more physiologically acceptable (Mumcuoglu *et al.*, 2018; Quinlan *et al.*, 2015). Further research into the identification of new biologically relevant compounds is also useful. Recent studies have identified new stem cell populations which are activated in response to acute skeletal injury (Chan *et al.*, 2018). By studying the secreted profile of these cells in comparison with controls, new relevant targets could be identified which may not even require supraphysiological doses to be effective. Additionally, the use of organs-on-a-chip and other computational models, which have been proven promising to identify/validate targets and have improved screening methods (Esch *et al.*, 2015), could accelerate results and research.

## Conclusions

Modelling grafts in tissue engineering after EO has been an active area of research in bone tissue engineering for years. The initial cartilage graft is well suited to survive in an avascular environment and it can induce, on its own, the migration of all the previously mentioned cell types. Although it is a reproducible method for bone formation, progress to enhance the bone-forming capacity of these constructs, to properly fill large bone defects, is moving slowly. However, as the understanding of the interactions that take place improves – not only between donor and host cells but also those of a fully functioning immune system – a better appreciation of how to improve such grafts will follow. As research in the field continues, graft vascularisation, integration and bone output will improve, making these tissue-engineered endochondral grafts a viable alternative to autologous bone graft substitutes in the future.

## References

- Adkisson HDt, Martin JA, Amendola RL, Milliman C, Mauch KA, Katwal AB, Seyedin M, Amendola A, Streeter PR, Buckwalter JA (2010) The potential of human allogeneic juvenile chondrocytes for restoration of articular cartilage. *Am J Sports Med* **38**: 1324-1333.
- Aggarwal S, Pittenger MF (2005) Human mesenchymal stem cells modulate allogeneic immune cell responses. *Blood* **105**: 1815-1822.
- Anderson HC, Garimella R, Tague SE (2005) The role of matrix vesicles in growth plate development and biomineralization. *Front Biosci* **10**: 822-837.
- Ankrum JA, Ong JF, Karp JM (2014) Mesenchymal stem cells: immune evasive, not immune privileged. *Nature Biotechnol* **32**: 252-260.
- Asari S, Itakura S, Ferreri K, Liu CP, Kuroda Y, Kandeel F, Mullen Y (2009) Mesenchymal stem cells

- suppress B-cell terminal differentiation. *Exp Hematol* **37**: 604-615.
- Bahney CS, Hu DP, Taylor AJ, Ferro F, Britz HM, Hallgrímsson B, Johnstone B, Miclau T, Marcucio RS (2014) Stem cell-derived endochondral cartilage stimulates bone healing by tissue transformation. *J Bone Miner Res* **29**: 1269-1282.
- Ballock RT, O'Keefe RJ (2003) The biology of the growth plate. *J Bone Miner Res* **18**: 715-726.
- Bauer TW, Muschler GF (2000) Bone graft materials: an overview of the basic science. *Clin Orthop Relat Res* **371**: 10-27.
- Biederman-Thorson MA (2013) Human physiology. Editors: Schmidt RF, Thews G. Springer-Verlag.
- Bourgine P (2013) Combination of cell immortalization and apoptosis induction to engineer decellularized matrices as bone graft materials. University of Basel. DOI: 10.5451/unibas-006222300.
- Bourgine P, Le Magnen C, Pigeot S, Geurts J, Scherberich A, Martin I (2014a) Combination of immortalization and inducible death strategies to generate a human mesenchymal stromal cell line with controlled survival. *Stem Cell Res* **12**: 584-598.
- Bourgine PE, Scotti C, Pigeot S, Tchang LA, Todorov A, Martin I (2014b) Osteoinductivity of engineered cartilaginous templates devitalized by inducible apoptosis. *Proc Natl Acad Sci U S A* **111**: 17426-17431.
- Brighton CT (1984) The biology of fracture repair. *Instr Course Lect* **33**: 60-82.
- Campbell MR, Gress CJ, Appleman EH, Jacenko O (2004) Chicken collagen X regulatory sequences restrict transgene expression to hypertrophic cartilage in mice. *Am J Pathol* **164**: 487-499.
- Carlevaro MF, Cermelli S, Cancedda R, Cancedda FD (2000) Vascular endothelial growth factor (VEGF) in cartilage neovascularization and chondrocyte differentiation: auto-paracrine role during endochondral bone formation. *J Cell Sci* **113**: 59-69.
- Carragee EJ, Chu G, Rohatgi R, Hurwitz EL, Weiner BK, Yoon ST, Comer G, Kopjar B (2013) Cancer risk after use of recombinant bone morphogenetic protein-2 for spinal arthrodesis. *J Bone Miner Res* **28**: 1537-1545.
- Cervantes-Diaz F, Contreras P, Marcellini S (2017) Evolutionary origin of endochondral ossification: the transdifferentiation hypothesis. *Dev Genes Evol* **227**: 121-127.
- Chan CK, Chen CC, Luppen CA, Kim JB, DeBoer AT, Wei K, Helms JA, Kuo CJ, Kraft DL, Weissman IL (2009) Endochondral ossification is required for haematopoietic stem-cell niche formation. *Nature* **457**: 490-494.
- Chan CK, Gulati GS, Sinha R, Tompkins JV, Lopez M, Carter AC, Ransom RC, Reinisch A, Wearda T, Murphy M (2018) Identification of the human skeletal stem cell. *Cell* **175**: 43-56.
- Chatterjea A, Meijer G, van Blitterswijk C, de Boer J (2010) Clinical application of human mesenchymal stromal cells for bone tissue engineering. *Stem Cells Int* **2010**: 215625. DOI: 10.4061/2010/215625.
- Chi J-T, Chang HY, Haraldsen G, Jahnsen FL, Troyanskaya OG, Chang DS, Wang Z, Rockson SG, van de Rijn M, Botstein D (2003) Endothelial cell diversity revealed by global expression profiling. *Proc Natl Acad Sci U S A* **100**: 10623-10628.
- Coleman CM, Vaughan EE, Browe DC, Mooney E, Howard L, Barry F (2013) Growth differentiation factor-5 enhances *in vitro* mesenchymal stromal cell chondrogenesis and hypertrophy. *Stem Cells Dev* **22**: 1968-1976.
- Colnot CI, Helms JA (2001) A molecular analysis of matrix remodeling and angiogenesis during long bone development. *Mech Dev* **100**: 245-250.
- Corcione A, Benvenuto F, Ferretti E, Giunti D, Cappiello V, Cazzanti F, Risso M, Gualandi F, Mancardi GL, Pistoia V, Uccelli A (2006) Human mesenchymal stem cells modulate B-cell functions. *Blood* **107**: 367-372.
- Correa D, Somoza RA, Lin P, Greenberg S, Rom E, Duesler L, Welter JF, Yayon A, Caplan AI (2015) Sequential exposure to fibroblast growth factors (FGF) 2, 9 and 18 enhances hMSC chondrogenic differentiation. *Osteoarthritis Cartilage* **23**: 443-453.
- Cunniffe GM, Vinardell T, Murphy JM, Thompson EM, Matsiko A, O'Brien FJ, Kelly DJ (2015) Porous decellularized tissue engineered hypertrophic cartilage as a scaffold for large bone defect healing. *Acta Biomater* **23**: 82-90.
- de Kroon LM, Narcisi R, Davidson ENB, Cleary MA, van Beuningen HM, Koevoet WJ, van Osch GJ, van der Kraan PM (2015) Activin receptor-like kinase receptors ALK5 and ALK1 are both required for TGF $\beta$ -induced chondrogenic differentiation of human bone marrow-derived mesenchymal stem cells. *PloS One* **10**: e0146124. DOI: 10.1371/journal.pone.0146124.
- Decambren A, Fournet A, Bensidhoum M, Manassero M, Sailhan F, Petite H, Logeart-Avramoglou D, Viateau V (2017) Low-dose BMP-2 and MSC dual delivery onto coral scaffold for critical-size bone defect regeneration in sheep. *J Orthop Res* **35**: 2637-2645.
- Dickhut A, Pelttari K, Janicki P, Wagner W, Eckstein V, Egermann M, Richter W (2009) Calcification or dedifferentiation: requirement to lock mesenchymal stem cells in a desired differentiation stage. *J Cell Physiol* **219**: 219-226.
- Dighe AS, Yang S, Madhu V, Balian G, Cui Q (2013) Interferon gamma and T cells inhibit osteogenesis induced by allogeneic mesenchymal stromal cells. *J Orthop Res* **31**: 227-234.
- Dimitriou R, Jones E, McGonagle D, Giannoudis PV (2011) Bone regeneration: current concepts and future directions. *BMC Med* **9**: 66. DOI: 10.1186/1741-7015-9-66.
- Djouad F, Charbonnier LM, Bouffi C, Louis-Pence P, Bony C, Apparailly F, Cantos C, Jorgensen C, Noel D (2007) Mesenchymal stem cells inhibit

the differentiation of dendritic cells through an interleukin-6-dependent mechanism. *Stem Cells* **25**: 2025-2032.

Ducheyne P, Qiu Q (1999) Bioactive ceramics: the effect of surface reactivity on bone formation and bone cell function. *Biomaterials* **20**: 2287-2303.

Einhorn TA, Gerstenfeld LC (2015) Fracture healing: mechanisms and interventions. *Nat Rev Rheumatol* **11**: 45-54.

English K (2013) Mechanisms of mesenchymal stromal cell immunomodulation. *Immunol Cell Biol* **91**: 19-26.

Engsig MT, Chen Q-J, Vu TH, Pedersen A-C, Therkildsen B, Lund LR, Henriksen K, Lenhard T, Foged NT, Werb Z (2000) Matrix metalloproteinase 9 and vascular endothelial growth factor are essential for osteoclast recruitment into developing long bones. *J Cell Biol* **151**: 879-890.

Esch EW, Bahinski A, Huh D (2015) Organs-on-chips at the frontiers of drug discovery. *Nat Rev Drug Discov* **14**: 248-260.

Fahmy-Garcia S, van Driel M, Witte-Buoma J, Walles H, van Leeuwen J, van Osch G, Farrell E (2017) NELL-1, HMGB1, and CCN2 enhance migration and vasculogenesis, but not osteogenic differentiation compared to BMP2. *Tissue Eng Part A* **24**: 207-218.

Farrell E, Both SK, Odörfer KI, Koevoet W, Kops N, O'Brien FJ, de Jong RJB, Verhaar JA, Cuijpers V, Jansen J (2011) *In-vivo* generation of bone via endochondral ossification by *in-vitro* chondrogenic priming of adult human and rat mesenchymal stem cells. *BMC musculoskeletal disorders* **12**: 31. DOI: 10.1186/1471-2474-12-31.

Finkemeier CG (2002) Bone-grafting and bone-graft substitutes. *JBJS* **84**: 454-464.

Freeman FE, Allen AB, Stevens HY, Guldborg RE, McNamara LM (2015) Effects of *in vitro* endochondral priming and pre-vascularisation of human MSC cellular aggregates *in vivo*. *Stem Cell Res Ther* **6**: 218. DOI: 10.1186/s13287-015-0210-2.

Frohlich M, Grayson WL, Wan LQ, Marolt D, Drobnic M, Vunjak-Novakovic G (2008) Tissue engineered bone grafts: biological requirements, tissue culture and clinical relevance. *Curr Stem Cell Res Ther* **3**: 254-264.

Gao F, Chiu SM, Motan DA, Zhang Z, Chen L, Ji HL, Tse HF, Fu QL, Lian Q (2016) Mesenchymal stem cells and immunomodulation: current status and future prospects. *Cell Death Dis* **7**: e2062. DOI: 10.1038/cddis.2015.327.

Garlanda C, Dejana E (1997) Heterogeneity of endothelial cells: specific markers. *Arteriosclerosis, thrombosis, and vascular biology* **17**: 1193-1202.

Gawliitta D, Farrell E, Malda J, Creemers LB, Alblas J, Dhert WJ (2010) Modulating endochondral ossification of multipotent stromal cells for bone regeneration. *Tissue Eng Part B Rev* **16**: 385-395.

Gerber H-P, Vu TH, Ryan AM, Kowalski J, Werb Z, Ferrara N (1999) VEGF couples hypertrophic cartilage remodeling, ossification and angiogenesis during endochondral bone formation. *Nat Med* **5**: 623-628.

Gerstenfeld LC, Cullinane DM, Barnes GL, Graves DT, Einhorn TA (2003) Fracture healing as a post-natal developmental process: molecular, spatial, and temporal aspects of its regulation. *J Cell Biochem* **88**: 873-884.

Gibson GJ, Kohler WJ, Schaffler MB (1995) Chondrocyte apoptosis in endochondral ossification of chick sterna. *Dev Dyn* **203**: 468-476.

Golub EE (2009) Role of matrix vesicles in biomineralization. *Biochimica et Biophysica Acta (BBA)-General Subjects* **1790**: 1592-1598.

Gómez-Barrena E, Rosset P, Lozano D, Stanovici J, Ermthaller C, Gerbhard F (2015) Bone fracture healing: Cell therapy in delayed unions and nonunions. *Bone* **70**: 93-101.

Grskovic I, Kutsch A, Frie C, Groma G, Stermann J, Schlötzer-Schrehardt U, Niehoff A, Moss SE, Rosenbaum S, Pöschl E (2012) Depletion of annexin A5, annexin A6, and collagen X causes no gross changes in matrix vesicle-mediated mineralization, but lack of collagen X affects hematopoiesis and the Th1/Th2 response. *J Bone Miner Res* **27**: 2399-2412.

Harada N, Watanabe Y, Sato K, Abe S, Yamanaka K, Sakai Y, Kaneko T, Matsushita T (2014) Bone regeneration in a massive rat femur defect through endochondral ossification achieved with chondrogenically differentiated MSCs in a degradable scaffold. *Biomaterials* **35**: 7800-7810.

Hayden RE, Mullin DP, Patel AK (2012) Reconstruction of the segmental mandibular defect: current state of the art. *Curr Opin Otolaryngol Head Neck Surg* **20**: 231-236.

Hellingman CA, Verwiel ET, Slagt I, Koevoet W, Poulblon RM, Nolst-Trenite GJ, Baatenburg de Jong RJ, Jahr H, van Osch GJ (2011) Differences in cartilage-forming capacity of expanded human chondrocytes from ear and nose and their gene expression profiles. *Cell Transplant* **20**: 925-940.

Hennig T, Lorenz H, Thiel A, Goetzke K, Dickhut A, Geiger F, Richter W (2007) Reduced chondrogenic potential of adipose tissue derived stromal cells correlates with an altered TGFbeta receptor and BMP profile and is overcome by BMP-6. *J Cell Physiol* **211**: 682-691.

Hoogduijn MJ, Popp F, Verbeek R, Masoodi M, Nicolaou A, Baan C, Dahlke MH (2010) The immunomodulatory properties of mesenchymal stem cells and their use for immunotherapy. *Int Immunopharmacol* **10**: 1496-1500.

Huang JI, Durbhakula MM, Angele P, Johnstone B, Yoo JU (2006) Lunate arthroplasty with autologous mesenchymal stem cells in a rabbit model. *JBJS* **88**: 744-752.

Jacenko O, Chan D, Franklin A, Ito S, Underhill CB, Bateman JF, Campbell MR (2001) A dominant interference collagen x mutation disrupts hypertrophic chondrocyte pericellular matrix and glycosaminoglycan and proteoglycan distribution in transgenic mice. *Am J Pathol* **159**: 2257-2269.

Jacenko O, Roberts DW, Campbell MR, McManus PM, Gress CJ, Tao Z (2002) Linking hematopoiesis

to endochondral skeletogenesis through analysis of mice transgenic for collagen X. *Am J Pathol* **160**: 2019-2034.

Janicki P, Kasten P, Kleinschmidt K, Luginbuehl R, Richter W (2010) Chondrogenic pre-induction of human mesenchymal stem cells on beta-TCP: enhanced bone quality by endochondral heterotopic bone formation. *Acta Biomater* **6**: 3292-3301.

Janssen NG, Weijs WL, Koole R, Rosenberg AJ, Meijer GJ (2013) Tissue engineering strategies for alveolar cleft reconstruction: a systematic review of the literature. *Clin Oral Investig* **18**: 219-226.

Jiang XX, Zhang Y, Liu B, Zhang SX, Wu Y, Yu XD, Mao N (2005) Human mesenchymal stem cells inhibit differentiation and function of monocyte-derived dendritic cells. *Blood* **105**: 4120-4126.

Jukes JM, Both SK, Leusink A, Sterk LM, van Blitterswijk CA, de Boer J (2008) Endochondral bone tissue engineering using embryonic stem cells. *Proc Natl Acad Sci U S A* **105**: 6840-6845.

Karoliina P, Eric S, Wiltrud R (2008) The use of mesenchymal stem cells for chondrogenesis. *Injury* **39 Suppl 1**: S58-65.

Khatab HM, Aoyama E, Kubota S, Takigawa M (2015) Physical interaction of CCN2 with diverse growth factors involved in chondrocyte differentiation during endochondral ossification. *J Cell Commun Signal* **9**: 247-254.

Kiernan CH, Hoogduijn MJ, Franquesa M, Wolvius EB, Brama PA, Farrell E (2016) Allogeneic chondrogenically differentiated human mesenchymal stromal cells do not induce immunogenic responses from T lymphocytes *in vitro*. *Cytotherapy* **18**: 957-969.

Kim S-H, Turnbull J, Guimond S (2011) Extracellular matrix and cell signalling: the dynamic cooperation of integrin, proteoglycan and growth factor receptor. *J Endocrinol* **209**: 139-151.

Kirsch T, Harrison G, Golub EE, Nah H-D (2000) The roles of annexins and types II and X collagen in matrix vesicle-mediated mineralization of growth plate cartilage. *J Biol Chem* **275**: 35577-35583.

Kirsch T, Pfäffle M (1992) Selective binding of anchorin CII (annexin V) to type II and X collagen and to chondrocalcin (C-propeptide of type II collagen) Implications for anchoring function between matrix vesicles and matrix proteins. *FEBS letters* **310**: 143-147.

Knuth C, Witte-Bouma J, Ridwan Y, Wolvius E, Farrell E (2017) Mesenchymal stem cell-mediated endochondral ossification utilising micropellets and brief chondrogenic priming. *Eur Cell Mater* **34**: 142-161.

Ko H, Milthorpe BK, McFarland CD (2007) Engineering thick tissues-the vascularisation problem. *Eur Cell Mater* **14**: 1-19.

Kolar P, Schmidt-Bleek K, Schell H, Gaber T, Toben D, Schmidmaier G, Perka C, Buttgerit F, Duda GN (2010) The early fracture hematoma and its potential role in fracture healing. *Tissue Eng Part B Rev* **16**: 427-434.

Konnecke I, Serra A, El Khassawna T, Schlundt C, Schell H, Hauser A, Ellinghaus A, Volk HD, Radbruch A, Duda GN, Schmidt-Bleek K (2014) T and B cells participate in bone repair by infiltrating the fracture callus in a two-wave fashion. *Bone* **64**: 155-165.

Kovach TK, Dighe AS, Lobo PI, Cui Q (2015) Interactions between MSCs and immune cells: implications for bone healing. *J Immunol Res* **2015**: 752510. DOI: 10.1155/2015/752510.

Kronenberg HM (2003) Developmental regulation of the growth plate. *Nature* **423**: 332-336.

Kubota S, Takigawa M (2011) The role of CCN2 in cartilage and bone development. *J Cell Commun Signal* **5**: 209-217.

Kuntzman A, Tortora GJ (2010) The process of fracture repair. In: *Anatomy and physiology for manual therapies*. John Wiley and Sons Ltd, Chichester, UK.

Kwan KM, Pang MK, Zhou S, Cowan SK, Kong RY, Pfordte T, Olsen BR, Sillence DO, Tam PP, Cheah KS (1997) Abnormal compartmentalization of cartilage matrix components in mice lacking collagen X: implications for function. *J Cell Biol* **136**: 459-471.

Le Blanc K, Ringden O (2007) Immunomodulation by mesenchymal stem cells and clinical experience. *J Intern Med* **262**: 509-525.

Le Blanc K, Tammik C, Rosendahl K, Zetterberg E, Ringden O (2003) HLA expression and immunologic properties of differentiated and undifferentiated mesenchymal stem cells. *Exp Hematol* **31**: 890-896.

Lee JH (2016) Development of osteoconductive and osteoinductive bone healing materials. *Bone Abstract* **5**: SS4.3. DOI: 10.1530/boneabs.5.S4.3.

LeGeros RZ (2008) Calcium phosphate-based osteoinductive materials. *Chem Rev* **108**: 4742-4753.

Lei H, Schmidt-Bleek K, Dienelt A, Reinke P, Volk H-D (2015) Regulatory T cell-mediated anti-inflammatory effects promote successful tissue repair in both indirect and direct manners. *Front Pharmacol* **6**: 184. DOI: 10.3389/fphar.2015.00184.

Lieberman JR, Friedlaender GE (2005) Bone regeneration and repair. *Biology and clinical applications*. pp: 1-398. Springer. DOI: 10.1385/1592598633.

Liu Y, Wang L, Kikuri T, Akiyama K, Chen C, Xu X, Yang R, Chen W, Wang S, Shi S (2011) Mesenchymal stem cell-based tissue regeneration is governed by recipient T lymphocytes *via* IFN-gamma and TNF-alpha. *Nat Med* **17**: 1594-1601.

Loi F, Cordova LA, Pajarinen J, Lin TH, Yao Z, Goodman SB (2016) Inflammation, fracture and bone repair. *Bone* **86**: 119-130.

Luvall P, Daniels K, Hay ED, Olsen BR (1992) Type X collagen is transcriptionally activated and specifically localized during sternal cartilage maturation. *Matrix* **12**: 404-413.

Mackie EJ, Ahmed YA, Tatarczuch L, Chen KS, Mirams M (2008) Endochondral ossification: how cartilage is converted into bone in the developing skeleton. *Int J Biochem Cell Biol* **40**: 46-62.

- Maes C (2013) Role and regulation of vascularization processes in endochondral bones. *Calcif Tissue Int* **92**: 307-323.
- Maes C, Goossens S, Bartunkova S, Drogat B, Coenegrachts L, Stockmans I, Moermans K, Nyabi O, Haigh K, Naessens M (2010) Increased skeletal VEGF enhances  $\beta$ -catenin activity and results in excessively ossified bones. *EMBO J* **29**: 424-441.
- Medici D, Olsen BR (2012) The role of endothelial-mesenchymal transition in heterotopic ossification. *J Bone Miner Res* **27**: 1619-1622.
- Meijer GJ, de Bruijn JD, Koole R, van Blitterswijk CA (2008) Cell based bone tissue engineering in jaw defects. *Biomaterials* **29**: 3053-3061.
- Mendes L, Katagiri H, Tam W, Chai Y, Geris L, Roberts S, Luyten F (2018) Advancing osteochondral tissue engineering: bone morphogenetic protein, transforming growth factor, and fibroblast growth factor signaling drive ordered differentiation of periosteal cells resulting in stable cartilage and bone formation *in vivo*. *Stem Cell Res Ther* **9**: 42. DOI: 10.1186/s13287-018-0787-3.
- Mizuno K, Mineo K, Tachibana T, Sumi M, Matsubara T, Hirohata K (1990) The osteogenic potential of fracture haematoma. Subperiosteal and intramuscular transplantation of the haematoma. *J Bone Joint Surg Br* **72**: 822-829.
- Mountziaris PM, Mikos AG (2008) Modulation of the inflammatory response for enhanced bone tissue regeneration. *Tissue Eng Part B Rev* **14**: 179-186.
- Mueller SM, Glowacki J (2001) Age-related decline in the osteogenic potential of human bone marrow cells cultured in three-dimensional collagen sponges. *J Cell Biochem* **82**: 583-590.
- Mukonoweshuro B, Brown CJ, Fisher J, Ingham E (2014) Immunogenicity of undifferentiated and differentiated allogeneic mouse mesenchymal stem cells. *J Tissue Eng* **5**: 2041731414534255. DOI: 10.1177/2041731414534255.
- Mumcuoglu D, Fahmy-Garcia S, Ridwan Y, Nicke J, Farrell E, Kluijtmans SG, van Osch GJ (2018) Injectable BMP-2 delivery system based on collagen-derived microspheres and alginate induced bone formation in a time- and dose-dependent manner. *Eur Cell Mater* **35**: 242-254.
- Nahar NN, Missana LR, Garimella R, Tague SE, Anderson HC (2008) Matrix vesicles are carriers of bone morphogenetic proteins (BMPs), vascular endothelial growth factor (VEGF), and noncollagenous matrix proteins. *J Bone Miner Metab* **26**: 514-519.
- Nam D, Mau E, Wang Y, Wright D, Silkstone D, Whetstone H, Whyne C, Alman B (2012) T-lymphocytes enable osteoblast maturation via IL-17F during the early phase of fracture repair. *PLoS One* **7**: e40044. DOI: 10.1371/journal.pone.0040044.
- Narcisi R, Cleary MA, Brama PA, Hoogduijn MJ, Tüysüz N, ten Berge D, van Osch GJ (2015) Long-term expansion, enhanced chondrogenic potential, and suppression of endochondral ossification of adult human MSCs *via* WNT signaling modulation. *Stem Cell Reports* **4**: 459-472.
- Nauta AJ, Fibbe WE (2007) Immunomodulatory properties of mesenchymal stromal cells. *Blood* **110**: 3499-3506.
- Ng J, Spiller K, Bernhard J, Vunjak-Novakovic G (2017) Engineering vascular niche for bone tissue regeneration. In: *Biology and engineering of stem cell niches*. pp: 517-529. Elsevier.
- Nishimura T (2015) Role of extracellular matrix in development of skeletal muscle and postmortem aging of meat. *Meat Science* **109**: 48-55.
- Omar OM, Graneli C, Ekstrom K, Karlsson C, Johansson A, Lausmaa J, Wexell CL, Thomsen P (2011) The stimulation of an osteogenic response by classical monocyte activation. *Biomaterials* **32**: 8190-8204.
- Pape HC, Marcucio R, Humphrey C, Colnot C, Knobe M, Harvey EJ (2010) Trauma-induced inflammation and fracture healing. *J Orthop Trauma* **24**: 522-525.
- Pelttari K, Winter A, Steck E, Goetzke K, Hennig T, Ochs BG, Aigner T, Richter W (2006) Premature induction of hypertrophy during *in vitro* chondrogenesis of human mesenchymal stem cells correlates with calcification and vascular invasion after ectopic transplantation in SCID mice. *Arthritis Rheum* **54**: 3254-3266.
- Penick KJ, Solchaga LA, Welter JF (2005) High-throughput aggregate culture system to assess the chondrogenic potential of mesenchymal stem cells. *Biotechniques* **39**: 687-691.
- Petite H, Viateau V, Bensaid W, Meunier A, de Pollak C, Bourguignon M, Oudina K, Sedel L, Guillemain G (2000) Tissue-engineered bone regeneration. *Nat Biotechnol* **18**: 959-963.
- Pfander D, Gelse K (2007) Hypoxia and osteoarthritis: how chondrocytes survive hypoxic environments. *Current opinion in rheumatology* **19**: 457-462.
- Pleumeekers MM, Nimeskern L, Koevoet WL, Kops N, Poublon RM, Stok KS, van Osch GJ (2014) The *in vitro* and *in vivo* capacity of culture-expanded human cells from several sources encapsulated in alginate to form cartilage. *Eur Cell Mater* **27**: 264-280.
- Quinlan E, Thompson EM, Matsiko A, O'Brien FJ, López-Noriega A (2015) Long-term controlled delivery of rhBMP-2 from collagen-hydroxyapatite scaffolds for superior bone tissue regeneration. *J Control Release* **207**: 112-119.
- Reinke S, Geissler S, Taylor WR, Schmidt-Bleek K, Juelke K, Schwachmeyer V, Dahne M, Hartwig T, Akyuz L, Meisel C, Unterwalder N, Singh NB, Reinke P, Haas NP, Volk HD, Duda GN (2013) Terminally differentiated CD8(+) T cells negatively affect bone regeneration in humans. *Sci Transl Med* **5**: 177ra136. DOI: 10.1126/scitranslmed.3004754.
- Rosatil R, Horanl GS, Piner03 GI, Garofalo S, Keene DR (1994) Normal long bone growth and development in type X collagen. *Nat Genet* **8**: 129-135.

- Roselló Llabrés X, Roselló Camps À, Jané Salas E, Alburquerque R, Velasco Ortega E, López López J (2014) Graft materials in oral surgery: revision. In: Biomimetics, Biomaterials and Tissue Engineering. Omics Publishing Group. **19**, pp 1-7.
- Ryan AE, Lohan P, O'Flynn L, Treacy O, Chen X, Coleman C, Shaw G, Murphy M, Barry F, Griffin MD, Ritter T (2014) Chondrogenic differentiation increases antidonor immune response to allogeneic mesenchymal stem cell transplantation. *Mol Ther* **22**: 655-667.
- Ryan JM, Barry FP, Murphy JM, Mahon BP (2005). Mesenchymal stem cells avoid allogeneic rejection. *J Inflamm (Lond)* **2**: 8. DOI: 10.1186/1476-9255-2-8.
- Schindeler A, McDonald MM, Bokko P, Little DG (2008) Bone remodeling during fracture repair: the cellular picture. *Semin Cell Dev Biol* **19**: 459-466.
- Schmid TM, Linsenmayer TF (1985) Immunohistochemical localization of short chain cartilage collagen (type X) in avian tissues. *J Cell Biol* **100**: 598-605.
- Schrier L, Ferns SP, Barnes KM, Emons JA, Newman EI, Nilsson O, Baron J (2006) Depletion of resting zone chondrocytes during growth plate senescence. *Journal of Endocrinology* **189**: 27-36.
- Scotti C, Piccinini E, Takizawa H, Todorov A, Bourguine P, Papadimitropoulos A, Barbero A, Manz MG, Martin I (2013) Engineering of a functional bone organ through endochondral ossification. *Proc Natl Acad Sci U S A* **110**: 3997-4002.
- Scotti C, Tonnarelli B, Papadimitropoulos A, Scherberich A, Schaeren S, Schauerte A, Lopez-Rios J, Zeller R, Barbero A, Martin I (2010) Recapitulation of endochondral bone formation using human adult mesenchymal stem cells as a paradigm for developmental engineering. *Proc Natl Acad Sci U S A* **107**: 7251-7256.
- Shahlaie K, Kim KD (2008) Occipitocervical fusion using recombinant human bone morphogenetic protein-2: adverse effects due to tissue swelling and seroma. *Spine* **33**: 2361-2366.
- Shapiro F (2008) Bone development and its relation to fracture repair. The role of mesenchymal osteoblasts and surface osteoblasts. *Eur Cell Mater* **15**: 53-76.
- Shen G (2005) The role of type X collagen in facilitating and regulating endochondral ossification of articular cartilage. *Orthod Craniofac Res* **8**: 11-17.
- Sotiropoulou PA, Perez SA, Gritzapis AD, Baxevanis CN, Papamichail M (2006) Interactions between human mesenchymal stem cells and natural killer cells. *Stem Cells* **24**: 74-85.
- Spaggiari GM, Abdelrazik H, Becchetti F, Moretta L (2009) MSCs inhibit monocyte-derived DC maturation and function by selectively interfering with the generation of immature DCs: central role of MSC-derived prostaglandin E2. *Blood* **113**: 6576-6583.
- Spaggiari GM, Capobianco A, Abdelrazik H, Becchetti F, Mingari MC, Moretta L (2008) Mesenchymal stem cells inhibit natural killer cell proliferation, cytotoxicity, and cytokine production: role of indoleamine 2,3-dioxygenase and prostaglandin E2. *Blood* **111**: 1327-1333.
- Stüdle C, Martin QV, Haumer A, Guerrero J, Centola M, Mehrkens A, Schaefer DJ, Ehrbar M, Barbero A, Martin I (2018) Spatially confined induction of endochondral ossification by functionalized hydrogels for ectopic engineering of osteochondral tissues. *Biomaterials* **171**: 219-229.
- Sweeney E, Campbell M, Watkins K, Hunter CA, Jacenko O (2008) Altered endochondral ossification in collagen X mouse models leads to impaired immune responses. *Dev Dyn* **237**: 2693-2704.
- Takayanagi H (2009) Osteoimmunology and the effects of the immune system on bone. *Nat Rev Rheumatol* **5**: 667-676.
- Takigawa M (2013) CCN2: a master regulator of the genesis of bone and cartilage. *J Cell Commun Signal* **7**: 191-201.
- Taniguchi N, Yoshida K, Ito T, Tsuda M, Mishima Y, Furumatsu T, Ronfani L, Abeyama K, Kawahara K-i, Komiya S, Maruyama I, Lotz M, Bianchi ME, Asahara H (2007) Stage-specific secretion of HMGB1 in cartilage regulates endochondral ossification. *Mol Cell Biol* **27**: 5650-5663.
- Tasso R, Augello A, Boccardo S, Salvi S, Carida M, Postiglione F, Fais F, Truini M, Cancedda R, Pennesi G (2009) Recruitment of a host's osteoprogenitor cells using exogenous mesenchymal stem cells seeded on porous ceramic. *Tissue Eng Part A* **15**: 2203-2212.
- Tasso R, Fais F, Reverberi D, Tortelli F, Cancedda R (2010) The recruitment of two consecutive and different waves of host stem/progenitor cells during the development of tissue-engineered bone in a murine model. *Biomaterials* **31**: 2121-2129.
- Thompson EM, Matsiko A, Farrell E, Kelly DJ, O'Brien FJ (2015) Recapitulating endochondral ossification: a promising route to *in vivo* bone regeneration. *J Tissue Eng Regen Med* **9**: 889-902.
- Thompson Z, Miclau T, Hu D, Helms JA (2002) A model for intramembranous ossification during fracture healing. *J Orthop Res* **20**: 1091-1098.
- Toben D, Schroeder I, El Khassawna T, Mehta M, Hoffmann JE, Frisch JT, Schell H, Lienau J, Serra A, Radbruch A, Duda GN (2011) Fracture healing is accelerated in the absence of the adaptive immune system. *J Bone Miner Res* **26**: 113-124.
- Tonnarelli B, Centola M, Barbero A, Zeller R, Martin I (2014) Re-engineering development to instruct tissue regeneration. *Curr Top Dev Biol* **108**: 319-338.
- Tortelli F, Tasso R, Loiacono F, Cancedda R (2010) The development of tissue-engineered bone of different origin through endochondral and intramembranous ossification following the implantation of mesenchymal stem cells and osteoblasts in a murine model. *Biomaterials* **31**: 242-249.
- van der Stok J, Koolen M, Jahr H, Kops N, Waarsing J, Weinans H, Van der Jagt O (2014) Chondrogenically

differentiated mesenchymal stromal cell pellets stimulate endochondral bone regeneration in critical-sized bone defects. *Eur Cell Mater* **27**: 137-148.

Walsh MC, Takegahara N, Kim H, Choi Y (2018) Updating osteoimmunology: regulation of bone cells by innate and adaptive immunity. *Nat Rev Rheumatol* **14**: 146-156.

Wu L, Genge B, Lloyd G, Wuthier R (1991) Collagen-binding proteins in collagenase-released matrix vesicles from cartilage. Interaction between matrix vesicle proteins and different types of collagen. *J Biol Chem* **266**: 1195-1203.

Yang L, Tsang KY, Tang HC, Chan D, Cheah KSE (2014) Hypertrophic chondrocytes can become osteoblasts and osteocytes in endochondral bone formation. *Proc Natl Acad Sci USA* **111**: 12097-12102.

Yang Y, Topol L, Lee H, Wu J (2003) Wnt5a and Wnt5b exhibit distinct activities in coordinating chondrocyte proliferation and differentiation. *Development* **130**: 1003-1015.

Yang Y-Q, Tan Y-Y, Wong R, Wenden A, Zhang L-K, Rabie ABM (2012) The role of vascular endothelial growth factor in ossification. *Int J Oral Sci* **4**: 64-68.

Yang Y (2009) Skeletal morphogenesis during embryonic development. *Crit Rev Eukaryot Gene Expr* **19**: 197-218.

Yeung Tsang K, Wa Tsang S, Chan D, Cheah KS (2014) The chondrocytic journey in endochondral bone growth and skeletal dysplasia. *Birth Defects Res C Embryo Today* **102**: 52-73.

Young N, Mikhailkevich N, Yan Y, Chen D, Zheng W-p (2005) Differential regulation of osteoblast activity by Th cell subsets mediated by parathyroid hormone and IFN- $\gamma$ . *J Immunol* **175**: 8287-8295.

Yousefi A-M, James PF, Akbarzadeh R, Subramanian A, Flavin C, Oudadesse H (2016) Prospect of stem cells in bone tissue engineering: a review. *Stem Cells Int* **2016**: 6180487. DOI: 10.1155/2016/6180487.

Zaiss MM, Axmann R, Zwerina J, Polzer K, Gückel E, Skapenko A, Schulze-Koops H, Horwood N, Cope A, Schett G (2007) Treg cells suppress osteoclast formation: a new link between the immune system and bone. *Arthritis Rheum* **56**: 4104-4112.

Zara JN, Siu RK, Zhang X, Shen J, Ngo R, Lee M, Li W, Chiang M, Chung J, Kwak J (2011) High doses of bone morphogenetic protein 2 induce structurally abnormal bone and inflammation *in vivo*. *Tissue Engineering Part A* **17**: 1389-1399.

Zhao ZG, Xu W, Sun L, You Y, Li F, Li QB, Zou P (2012) Immunomodulatory function of regulatory dendritic cells induced by mesenchymal stem cells. *Immunol Invest* **41**: 183-198.

Zheng ZH, Li XY, Ding J, Jia JF, Zhu P (2008) Allogeneic mesenchymal stem cell and mesenchymal stem cell-differentiated chondrocyte suppress the

responses of type II collagen-reactive T cells in rheumatoid arthritis. *Rheumatology (Oxford)* **47**: 22-30.

Zhou X, von der Mark K, Henry S, Norton W, Adams H, de Crombrughe B (2014) Chondrocytes transdifferentiate into osteoblasts in endochondral bone during development, postnatal growth and fracture healing in mice. *PLoS Genet* **10**: e1004820. DOI: 10.1371/journal.pgen.1004820.

## Discussion with Reviewer

**Diego Correa:** Taking into consideration the pericytic phenotype of MSCs and their description as osteoprogenitors during bone formation and fracture healing (Maes *et al.*, 2010), what would be the real contribution of such cells (as perivascular) during the engineering of bone grafts?

**Authors:** The idea that pericytic MSCs attach to the side of the vasculature, in a way effectively and passively migrating to the site of bone formation, is one of our favourite theories in bone tissue engineering. Although Maes *et al.* (2010) show that these cells undergo osteoblastic differentiation and contribute to bone formation, we believe they could also contribute to a number of crucial processes, considering the many bioactive molecules they encounter in this environment which can influence their behaviour. It would be interesting to see if they also contribute to the stabilisation of the bone marrow niche microenvironment or somehow further influence the migration of the vasculature into the centre of the cartilage template. We fully believe they contribute to bone formation, but as the field digs deeper into this area, they may find these cells play an even bigger role in bone formation.

**Diego Correa:** If such a phenomenon results critical, how do the authors envision to enhance it?

**Authors:** If it proves critical that pericytic MSCs, specifically the subset that co-migrate with the invading vasculature, are crucial for bone formation, it could be advantageous to enhance or accelerate the migration of the vasculature. Alternatively, determining what factor(s) this specific subset of MSCs is attracted to would be better; then, this(these) could be incorporated into a tissue-engineered construct or bound to a biomaterial to enhance migration of this specific MSC subtype which would have the potential to improve or accelerate bone formation.

**Editor's note:** The Scientific Editor responsible for this paper was Martin Stoddart.