

WHO ARE ANXIOUS AND SUPPOSED TO BE “JAKARTA ONE”?: A SYSTEMIC FUNCTIONAL LINGUISTICS APPROACH

Endras Setyadi Wicaksono¹; Djatmika²; Sumarlam³

^{1,2,3}Pascasarjana Universitas Sebelas Maret
Jl. Ir. Sutami No. 36 A, Surakarta 57126, Indonesia
¹endrasiano@gmail.com; ²djatkika@uns.ac.id; ³sumarlamwd@gmail.com

Received: 18th September 2017 / **Revised:** 15th January 2018 / **Accepted:** 19th January 2018

How to Cite: Wicaksono, E. S., Djatmika., & Sumarlan. (2018). Who are anxious and supposed to be “Jakarta one”?: A systemic functional linguistics approach. *Lingua Cultura*, 12(3), 301-307.
<https://doi.org/10.21512/lc.v12i3.3991>

ABSTRACT

The purpose of this research was to know the structure of debate and the difference of usage of modulation by the candidates in the third session debate of Pilkada DKI Jakarta in 2017. The debate in a general election was a new medium in the campaign. This research revealed the form and meaning of dominated modulation used by the candidates by applying Systemic Functional Linguistics (SFL). This was a descriptive qualitative research using observation method in collecting the data. The source of data was a video of the third session debate of Pilkada DKI Jakarta in 2017. The data contained aspect of grammar and lexicon of the speech. Then, it was analyzed by using identity-method by Sudaryanto and content analysis suggested by Spradely. The result shows that there are two forms of modulation marker. It is modulation of inclination that is dominantly used by the first candidate and third candidate. Then, the second candidate dominantly uses modulation of obligation. The domination is a strategy of each candidate to defend and prioritize their programs to lead DKI Jakarta for the next five years.

Keywords: Systemic Functional Linguistics (SFL), debate, Pilkada candidates

INTRODUCTION

A debate is one of the new media for the campaign. Nowadays, candidates do not need to gather people in a large field for oration, tour the city with various vehicles that have been equipped with attributes or put an advertisement containing the profile of the candidate on billboards in the strategic locations. Moreover, technology contributes to the effectiveness of the debate by broadcasting it through electronic media such as television, radio, and the internet.

Besides the technology, language also has an active role in exchanging the information between speakers. Without language, technology will not affect anything in this world. The connection with the third session debate of Pilkada DKI Jakarta in 2017 is that language helps the candidates to convey their ideas to the public. Language can influence people in decision-making during voting. Through language, the purpose of holding a campaign can be well packaged. Therefore, the candidates will use the language that can attract audiences' sympathy, persuade the audiences to choose them, and reflect their integrity to be elected as a leader.

The words that will compose their statements are the chosen words that reflect the background of each candidate. Asror (2015) has stated that the politicians struggle to

persuade the society by taking linguistics' aspects to build their images. Those images consist of words and grammatical structures. It means that the candidates exploit the language, whether by word or grammar to achieve their goal in this event. The candidates use it in different ways based on their goal and their background. Thus, the researcher wants to know how the candidate achieves their goal by language.

Wang (2014) who has analyzed the religious texts uses Scripture Bible as the source of his data. He also wants to reveal the interpersonal meaning between human and their Lord through mood and modalities. The results show that the language has helped make the relationship between God and human closer directly and indirectly. In this research, the researchers use the candidate's speech at the third session debate of Pilkada DKI Jakarta in 2017 as the data.

Vold (2006) has analyzed several researches from two disciplines namely linguistics and medicine. It is in three different languages, English, French, and Norwegian produced by male and female researchers. He has also compared the use of epistemic modalities to these three variables. There are the three types of epistemic modalities that are a possibility, probability, and certainty. It has focused on the type of possibility and probability. This research compares the use of modalities that are used by

the candidates, especially modulation modality taken from Halliday's theory.

Pastor (2012) has also studied English-language written by English-speaking authors and non-English speaking authors. Pastor only uses epistemic modalities focusing on the modal verb. This research also discusses modal verb as one way of expressing modalities. However, there is one more way to uncover the modalities that is an expansion of the predictor.

Besides, there is some research which has been done by some researchers about the political issues. They are Asror (2015), Maretha (2016), and Erlynda (2016). However, those researchers used a discourse analysis approach to uncover the phenomena in the text. This phenomenon is the difference with this research. While in this research, the researchers want to discuss the political text by using Systemic Functional Linguistics (SFL), especially on its modalities to uncover the phenomena in the text. The text refers to the speech of the candidates in the third session debate of Pilkada DKI Jakarta in 2017. Modality in the SFL is one of the appropriate theories for answering the problem. It is the elements of SFL that realize the speaker's assessment of the content of his/her speech. Modality is a sign that the writer or speaker is presenting a personal view rather than an objective fact (Bankole & Ayoola, 2014). Moreover, the SFL involves the context of the situation to understand the meaning of a speech (Pusparini, Djatmika, & Santosa, 2017). Without using the context of the situation, the meaning of a speech may not fit the speaker's meaning.

The debate is discussion or exchange of an opinion on a matter by giving each other reasons to defend their opinions (Darby, 2007). According to Tarigan (2008), this debate is an argument for determining whether a proposal is good or not. It is supported by a team called affirmative and denied by another team called negation. From these two concepts, it can be said that this debate is a process of exchange of argument more than one person to achieve a victory. The debate can happen anywhere, for example in politics, companies, law, and education. The debate in politics is used as a medium of a campaign to win the elections. The participants of the debate can convey their visions to the audience so the community can know the programs of the candidates. The debate in this research is an event which gives an opportunity to the candidates of the governor to convey their vision and mission for the next five years hold by KPU DKI Jakarta and is broadcasted by selected channel.

The context of the situation is the environment of the text or the things surrounding the text. The context of this situation is also termed as register. As Halliday stated in Djatmika (2012), an abstraction connects language variations with a variety of social contexts. When a language is used, there is a variable that affects the language whether it is used in spoken (speech) or written (text). Furthermore, Djatmika (2012) has explained that there are three aspects in the context of the situation; field, tenor, and mode. The text in this research is the speech of the candidates in the third session debate of Pilkada DKI Jakarta in 2017. When it is related to the third session debate of Pilkada DKI Jakarta in 2017, the context of the situation can be explained as follows.

The field is the kind of activity done by the participants. In this case, it is a debate. The theme of debate at that night is the population and quality improvement of Jakarta society. Then, the tenor is the participants in the activity. Tenor in the debate is the moderator, and the

first candidate (Agus Harimurti Yudhoyono and Sylviana Murni), the second candidate (Basuki Tjahaya Purnama and Djarot Saiful Hidayat), the third candidate (Anis Baswedan and Sandiaga Salahuddin Uno), panelists, and audiences. The mode is a manifestation of the implementation of the activities that undertaken by the participants. In short, it is the role of language. The mode in the debate is a persuasive spoken language in the form of a dialogue among the candidates.

According to Halliday (2014), the modality refers to the area of meaning that lies between yes and no, and the intermediate ground between positive and negative polarity. It implies that the purpose of a speech has a degree of certainty, so it is arguable. It is because the lexis that marks the modality is not really in the positive or negative poles, such as 'yes' and 'no', but they are between them. Modality has four variables. However, only two variables are discussed in this research. Those are the types and value.

Modality is classified into two, namely modalization and modulation. Modalization refers to a proposition meaning. Meanwhile, a proposition is a semantic function of a clause in the exchange of information (Halliday, 2014). It means a clause that has a modalization marker only gives or demands information. Its clause is formed as statement or question as shown in the following example.

Example: that will be John.
 will that be John?

Modalization markers can be a finite modal operator, modal adjunct, and a combination of both. Table 1 and Table 2 show the finite modal operator and modal adjunct.

Table 1 Types and Value of Finite Modal Operator

	High	Med	Low
+	Must, ought to, need	will, would, should	Can, may, could, might
-	Mustn't, can't, couldn't	Won't, wouldn't	Needn't

Table 2 Types and Value of Modal Adjunct

	High	Medium	Low
Probability	certainly	probably	Possibly, perhaps, maybe
usuality	Always, never	usually	Sometimes, ever, often, seldom

Modalization also has two categories, namely probability and usuality (Halliday, 2014). The probability marker is used to give information which has not been known yet by the speaker. In other words, the speaker does not know whether the information is true or false. An example of a probability marker is as follows.

Example: That will be John.
 That is probably John.

Then, the usuality marker is used to express how often the participant does the activity in the speech. Here is the example of usuality marker (Halliday, 2014).

Example: He usually sits there all the day.
He will sit there all the day.

Moreover, modulation is the proposal meaning. It means a clause that has a modulation marker has the meaning of giving or receiving goods and services. A clause that has modulation markers is usually a command. However, not all of the clauses of the proposal are commands. It is influenced by the context of the situation when the speech occurs. A clause of a proposal can also be in the form of a question or a statement. Here is the example (Halliday, 2014).

Example: Shall I go home?
Go home!
Let's go home!

There are two types of modulation. Those are obligation and inclination. The way to express modulation is different from modalization. Modulation has only two ways to express the marker. They are a finite modal operator (Table 1). Then, the expansion of the predicator uses a passive verb and an adjective (Table 3).

Table 3 Types and Value of Expansion of Predicator

	High	Medium	Low
Obligation	Required to	Supposed to	Allowed to
Inclination	Determined to	Anxious to	Willing to

Obligation marker is used to express a command. The example is as follows (Halliday, 2014)

Example: You must go home!
John's supposed to go.

Moreover, inclination marker is used to express an offer. Here is the example.

Example: I will help them (Halliday, 2014)
I am anxious to help them (Halliday, 2014)

Another variable of modality is value. According to Halliday (2014), the third variable in modality is the attached value to the modal judgment. There are high, medium, or low. Based on the theory, it is the degree of modality markers to interpret a speech. Every candidate has their strategy to influence the society. It is in line with the claim made by Katrňáková (2001). The speakers have the choice in realizing the modality. It is showed from the difference of domination of modality usage in each segment.

There are some issues discussed. Those are how is the structure of debate in the third session debate of Pilkada DKI Jakarta in 2017 and how is the difference of usage of modulation by the candidates in the third session debate of Pilkada DKI Jakarta in 2017. Therefore, the purpose of this research is to know the structure of debate and the difference of usage of modulation by the candidates in the third session debate of Pilkada DKI Jakarta in 2017. The result is expected to explain SFL, especially the modality in revealing the speaker's assessment in the content of his/her speech. Moreover, the results of this research provide information to the public about the way of thinking and the attitude of the candidates in their speech to lead DKI Jakarta for the next five years.

METHODS

This research uses descriptive qualitative study. It describes the activity in the form of the word sequence. The related issues provide a more-in-depth understanding. The source of data in this research is a speech of the candidates at the third session debate of Pilkada DKI Jakarta in 2017. The data of this research are the grammar and lexicon of the speech. Method of data collecting is observation. First, the researchers observe the use of language used by the candidates by watching the event (third session debate of Pilkada DKI Jakarta in 2017) on television. The researchers also download the video from YouTube, so it can be observed again when the researchers want to analyze the data. Second, the speeches are transcribed to make it easier for the observation. After transcribing the speeches, the noting technique is used by the researchers in finding the clauses that contain the modulation marker. Third, those clauses are noted by using code. After collecting the clauses, the researchers classify the clauses into tables and analyze the data.

The researchers use the identity method by Sudaryanto and content analysis technique by Spradely. Identity method is a method in which the deciding device is outside and not part of the language (Sudaryanto, 2015). This method is used to distinguish segments at the event. Then, the researchers also use the dividing-key-factors technique as a primary technique and differentiating technique as an advanced technique to differentiate it between opening, content, and closing of the event. Finally, a content analysis technique finds the form, meaning, and function of social behavior. In this case, it is a modulation usage in the debate. Generally, analyzing data in qualitative research is divided into four; those are domain analysis, taxonomic analysis, componential analysis, and cultural theme analysis (Spradley in Onwuegbuzie, Leech, & Collins, 2012).

RESULTS AND DISCUSSIONS

The researchers show the structure of debate as a social process to represent the social context of the text. Then, the researchers show the types of modulation found in the speeches of the candidates. According to Santosa (2003), every social process has a specific social purpose. The process has a sequence or series of event to achieve its purpose. In the text, a series of event is called genre. Nevertheless, the genre is not only applied in a text which can be read (product) but also in an event (process). This also happens in a society. So, it can be applied to the debate. It is because the third session debate of Pilkada DKI Jakarta in 2017 is organized by KPU DKI Jakarta and has a series of event to achieve the goal.

The debate of Pilkada DKI Jakarta is a political event. Language used in a political area has the power to persuade. A genre which has a goal to persuade is an exposition text that is made to express opinions and persuade the reader or the speaker (Kurniawati & Kurniawan, 2017). By combining their statement, it can be said that the debate of Pilkada has three series of events.

Then, the debate of Pilkada DKI Jakarta consists of six sessions. Those sessions are divided into three segments that are distinguished by whether there is an interaction among the candidates or not. The first and second sessions are exposing vision and mission based on the theme by each candidate and answering a question from panelists. Both

sessions are called Opening Segment (OS) which has a similar function to the first series in exposition text called thesis. There is no interaction among the candidates in this segment. Next, the third session is answering a question from panelists about candidates' programs and listening to the responses from other candidates. It means that each candidate gets different questions.

In the fourth session, they ask each other and respond to each other. Both sessions are called Content of Segment (CoS) which has a similar function to the second session in exposition text called argumentation. There is an interaction among the candidates in this segment. The fifth session is answering a similar question from panelists. The sixth session is expressing their closing statement. Both sessions are called Closing Segment (CIS) which has a similar function to the last series of exposition text called a recommendation. There is no interaction among the candidates in this segment. Figure 1 shows the structure of the debate.

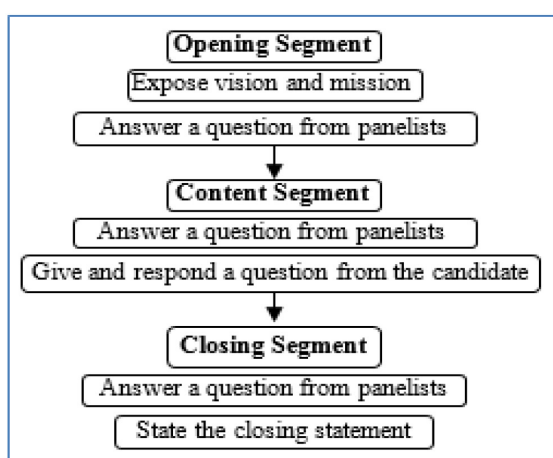


Figure 1 Structure of the Debate

The modulation clause is marked by the use of lexis formed as finite modal operator and expansion of the predicator. Lexis of finite modal operator found on the debate are *harus* (must), *akan* (will), *dapat* (can), *perlu* (need), *ingin* (will), *mesti* (must), *bisa* (can), *mau* (will), and *seharusnya* (should). Some examples are as follows.

- (1) *Satpol PP harus diberdayakan sesuai dengan tupoksinya* (D3.P1.236).
(Satpol PP must be empowered in accordance with their duties and functions.)
- (2) *Saya perlu jelaskan* (D3.P2.81).
(I need to explain.)
- (3) *... warga Jakarta bisa imun terhadap godaan narkoba* (D3.P3.56).
'... Jakarta society can protect their self from drug.'

Example (1), (2), and (3) are clauses which use high, medium, and low value of modal operator to express obligation by using lexis; *harus* (must), *perlu* (need), and *bisa* (can).

The other way to express modulation is by using the expansion of the predicator. There are two forms, a passive verb, and an adjective. Lexis of expansion of the predicator by a passive verb on the debate are *dibutuhkan* (needed), and *disarankan* (suggested).

The lexis that is not found in the debate is *diharuskan*

(required to), *diharapkan* (supposed to), and *diperbolehkan* (allowed to). The mentioned predicators by passive verb are shown as follows.

- (4) *Bahwa di sini peran perempuan juga pemberdayaan perempuan di sini juga sangat dibutuhkan* (D3.P1.69).
(That role and empowerment of women are needed here.)
- (5) *Sehingga kepada yang bersangkutan disarankan untuk pindah sekolah* (D3.P2.356).
(So they are advised to move to another school.)

Example (4) and (5) are clauses using the medium value of expansion of the predicator by a passive verb. Those express obligation by using lexis of *dibutuhkan* (needed) and *disarankan* (suggested to). Moreover, lexis of expansion in the predicator by an adjective found on the debate is *keras* (serious), *betul-betul* (really), and *benar-benar* (really). Here are the statements.

- (6) *Kami betul-betul sangat anti kepada korupsi* (D3.P2.228).
(We are really against corruption.)
- (7) *Supaya masyarakat betul-betul mampu bertanggung jawab* (D3.P2.231).
(So that people can really be responsible.)
- (8) *Kita sangat keras untuk melawan narkoba* (D3.P2.71).
(We are very serious against the drugs.)

Example (8) is a clause with a high value of expansion of the predicator by an adjective. It shows obligation by using lexis of *keras* (serious). Moreover, there are some modulated clauses in the debate. Those are:

- (9) *Mereka mendamba-dambakan itu* (D3.P1.308).
(They yearn for it.)
- (10) *Saya mencoba menjawab Bu Silvy dan Mas Agus* (D3.P3.289).
(I try to answer Mrs. Silvy and Mr. Agus.)

Example (9) is a modulated clause of the low value of inclination by using lexis of *mendamba-dambakan* (yearn). Meanwhile, example (10) is a modulated clause of the low value of inclination by using lexis of *mencoba* (try to).

Then, the researchers show the frequency of modulation usage by the candidates. Thus, the researchers can discuss the meaning of dominating modulation used by the candidates related to the structure of the debate. In the debate of Pilkada DKI Jakarta from the first segment to the end, there are 76 clauses produced by the first candidate, 45 clauses by the second candidate, and 55 clauses by the third candidate. Table 4 and Table 5 show the frequency of modulation usage by the candidates.

Table 4 Obligation Usage Frequencies

C	Num of Clauses	Obligation			Σ	%
		H	M	L		
1 st	383	32	3	2	37	9,7
2 nd	415	23	3	3	29	7,0
3 rd	399	5	0	10	15	3,8
Σ	1193				81	

Table 5 Inclination Usage Frequencies Globally

C	Num of Clauses	Inclination			Σ	%
		H	M	L		
1 st	383	4	9	26	39	10,2
2 nd	415	0	4	12	16	3,8
3 rd	399	3	17	20	40	10
Σ	1193				95	

There are 176 clauses which use the modality of modulation and 81 clauses use modulation of obligation. The first candidate produces 37 clauses, the second candidate has 29 clauses, and the third candidate states 15 clauses. Meanwhile, there are 95 clauses in the modality of inclination. The first candidate has 39 clauses, the second candidate produces 16 clauses, and the third candidate states 40 clauses.

Moreover, the first candidate uses 32 clauses of high obligation. It is more dominant than other categories. Similarly, the second candidate also uses high obligation more than other categories with 23 clauses. However, the third candidate tends to use low inclination dominantly. They use 20 clauses of low inclination. It can be seen in Table 6.

Table 6 Obligation Usage Frequency based on the Structure of Debate

Str Deb	C	Num of Clauses	Obligation			%
			H	M	L	
OS	1 st	51	4	-	1	9,8
	2 nd	53	-	1	2	5,7
	3 rd	53	-	-	4	7,5
CoS	1 st	296	27	3	1	10,5
	2 nd	310	21	2	-	7,4
	3 rd	311	5	-	3	2,6
CIS	1 st	36	1	-	-	2,8
	2 nd	52	2	-	1	5,8
	3 rd	35	-	-	3	8,6
	Σ	1193				

Based on Table 6, it shows that the first uses modulation of obligation a lot. They produce 10,5% of clauses in CoS. The lexis used by the first candidate as the obligation is *harus* (must), *perlu* (need), *seharusnya* (should), and *jangan* (do not). In this segment, the candidates are given the opportunity to answer questions from the panelists in accordance with their vision and mission. Then, the other candidates give a response. The first candidate takes advantage of this session to press the society about the importance of a program to be realized. This is shown by the use of the high value of modulation of obligation. It is the most between the other two candidates in their statement. It is enough to arouse the society in realizing their programs. In addition, CoS provides opportunities for candidates to ask each other and respond to each other. Here are the examples of some clauses produced by the first candidate in the content segment.

- (11) *Kita harus cegah dengan berbagai cara ...* (D3.P1.107)
(We must prevent it with many ways.)
- (12) *Oleh karena itu kita harus meyakinkan bahwa seluruh korban narkoba benar-benar mendapatkan treatment yang tepat* (D3.P1.77-78).
(Therefore we must make sure that all drug victims really get the right treatment.)
- (13) *Rasanya, kita perlu konsisten dalam sikap, tindakan, dan hal-hal lainnya* (D3.P1.326).
(It seems, we need to be consistent in attitudes, actions, and other things.)

Example (11) uses lexis of *harus* (must) as the high value of modulation of obligation. The candidate uses *kita* 'we' as a subject on the clause. *Kita* (we) refers to the speaker and the audience, so the Jakarta society understands that the candidate invites himself and all people in Jakarta to understand the program (process) in the clause. In example (12), the candidate also uses lexis *harus* (must) as the high value of modulation of obligation and *kita* (we) as the subject of the clause. It indicates that the activity (process) in the clause is significant to all of the participants. This result is in line with Ayuningtias (2014) and Valipour and Aidinlou (2011). In a political speech, *harus* (must) (modality system) and *kita* (we) (pronoun) are exploited linguistics feature to launch the social process.

The second candidate uses modulation of obligation dominantly on CoS. There are 7,4% of clauses produced by the second candidate. The second candidate uses lexis such as *harus* (must), *perlu* (need), *musti* (must), *boleh* (may), *bisa* (can), *janganlah* (do not) as the modulation of obligation. It is 21 high-value clauses. Those clauses contain invitation, proscribe, and command for the candidates and society. On the other hand, the first candidate uses modulation of obligation more dominant than the second candidate. Both candidates prefer to produce clauses with proposal meaning in this segment. It may be because they can argue by asking and responding to each other in this segment. The followings are clauses produced by the second candidate in this segment.

- (14) *Janganlah gunakan fitnah-fitnah* (D3.P2.212).
(Do not use slanders.)
- (15) *Dan tidak boleh membuka tempat hiburan lagi* (D3.P2.80).
(And may not open entertainment venues any more.)

Example (14) uses lexis *janganlah* 'do not' as a high value of modulation of obligation. This example has a request meaning not to do an activity of slandering. This is in line with the meaning of modulation that is a proposal in the form of requesting goods and services (Halliday, 2014).

Moreover, the third candidate uses modulation of obligation dominantly on CIS. Every candidate is given the opportunity to answer the same question and state the closing statement. The third candidate exploits this occasion by asking permission to the society of Jakarta to give a chance for the third candidate to lead Jakarta for the next five years. The clause aims to influence the people in Jakarta so that they will choose the third candidate. It shows from the use of three clauses which have a low value of modulation of obligation. The third candidate uses lexis like *harus* (must), *perlu* (need), and *bisa* (can) as the realization of the modulation of obligation. Here are some clauses stated by the third candidate on CIS.

- (16) *izinkan kami menyampaikan di sini* (D3.P3.391).
(allow us to express here.)
- (17) *dan izinkan kami memastikan...* (D3.P3.392).
(And allow us make sure..)

Examples (16) and (17) use lexis of *izinkan* (allow) as low value of modulation of obligation. The example has a command for Jakarta society to grant the second candidate permission to perform an activity (process).

Based on the number of clause usage marked by modulation of obligation in Table 4, the first and second candidate are more dominant than the third candidate. Both candidates use modulation of obligation on the CoS. It shows that both candidates try to confirm the importance of their programs. They are anxious to show that there are many things should be fixed in Jakarta.

Table 7 Inclination Usage Frequency based on the Structure of Debate

Str Deb	C	Num of Clauses	Obligation			%
			H	M	L	
OS	1 st	51	3	5	6	27,5
	2 nd	53	-	-	-	0
	3 rd	53	2	7	1	18,9
CoS	1 st	296	-	4	18	7,4
	2 nd	310	-	13	7	6,5
	3 rd	311	1	8	15	7,7
CIS	1 st	36	1	-	2	8,3
	2 nd	52	-	1	5	11,5
	3 rd	35	-	2	4	17,1
	Σ	1193				

In the modulation of inclination (Table 7), the first candidate uses it dominantly on OS. They produce 27,5% of clauses in this segment. The first candidate uses lexis such as *akan* (will), *ingin* (want), *bisa* (can). This segment is exploited by the first candidate to open the society's mindset about their willingness to realize their programs. The followings are some clauses stated by the first candidate on the opening segment.

- (18) *Saya akan menutup tempat-tempat transaksi narkoba tanpa tebang pilih* (D3.P1.17).
(I will close the places of drug transactions indiscriminately.)
- (19) *Kita ingin meningkatkan prasarana dan sarana yang semakin ramah untuk disabilitas* (D3.P1.19).
(We want to improve the infrastructure and facilities that are pleasant to disability.)

Example (18) shows lexis *akan* (will) as a medium value of modulation of inclination. The subject used by the candidate is *saya* (I). It indicates that the candidate has a desire to perform the activities (process) contained in the clause. Similar with the example (19), both clauses are the offer of the first candidate to the Jakarta if they are elected to be Governor and Vice Governor. Offering something is a form of the meaning of the proposal (Djarmika, 2012).

The second candidate uses clauses of modulation of inclination dominantly on CIS. They produce about 11,5% of clauses in this segment. The second candidate

uses lexis like *ingin* (want), *pingin* (want), and *mau* (want). The second candidate plans to close the debate by giving a statement which shows their enthusiasm in realizing their programs. Meanwhile, the third candidate is more dominant than the first candidate in using modulation of inclination. They produce 17,5% of this clauses in this segment. The followings are some clauses stated by the second and the third candidate in CIS.

- (20) *Kami ingin anak-anak itu sehat* (D3.P2.392).
(We want these kids to be healthy.)
- (21) *Kami ingin warga DKI yang sudah kami didik dengan baik*, (D3.P2.412)
(We want citizens of DKI that we have educated well.)
- (22) *Dan kita akan konsisten di sana* (D3.P3.379).
(And we will be consistent.)
- (23) *maka, semua warga Jakarta akan bekerja bersama untuk mewujudkan kota yang maju* (D3.P3.364).
(then, all citizens of Jakarta will work together to realize a developed city.)

Examples (20) and (21) show lexis of *ingin* (want) as the low value of modulation of inclination. Meanwhile, examples (22) and (23) use lexis of *akan* (will) as the medium value of modulation of inclination. The two lexis indicate the degree of inclination of the candidates to do something. Based on the information, it is known that example (22) and (23) produced by the third candidate have a higher degree of a tendency than examples (20) and (21). Based on the difference in the value, it shows that both candidates have a different assessment of what they say. It is in accordance with Munfarida (2014).

Finally, the third candidate uses modulation of inclination more on OS. They have 18,9% of clauses in this segment. The third candidate uses lexis such as *akan* (will), *ingin* (want), and *bisa* (can). Like the first candidate, the third candidate also exploits this segment to open the society's mindset about their willingness to realize their programs. However, the first candidate is more dominant than the third candidate in using this clause type. They produce 27,5% of clauses in this segment. The followings are some clauses stated by the third candidate on OS.

- (24) *Kami akan undang mereka terlibat* (D3.P3.21).
(We will invite them to be involved.)
- (25) *Anak-anak kita bisa menyebarkan pertumbuhan di seluruh wilayah daripada Jakarta* (D3.P3.43).
(Our children can spread economic growth throughout the region in Jakarta.)

Examples (24) and (25) illustrates lexis of *akan* (will) as the medium value of modulation of inclination. The clause uses *kami* (we) as the subject. It represents the candidate for governor and candidate for vice governor. The candidate wants to show they have a desire to do something (process).

Based on the number of clauses marked by modulation of inclination on Table 5, the first candidate and the third candidate use it more dominant than the second candidate. It happens because the first and third candidates are the challengers. Therefore, they must offer their program to the society more often than the second candidate. They must show their willingness and enthusiasm in realizing their programs, especially for Jakarta. On the other side, the second candidate is a defender. They are the governor and vice governor who have been known by the Jakarta people.

People have known the result of their performance as a leader, so they do not need to give a new commitment.

CONCLUSIONS

Based on the analysis, it can be concluded that the structure of exposition text can be applied to the debate of Pilkada DKI Jakarta. It is because both have a similar social function which is persuading. It is in line with previous research that the language used in a political area has the power to persuade.

Every candidate has their strategy to influence the society. It is in line with the claim made by Katrňáková. The speakers have the choice in realizing the modality. They may affect the society by showing the importance of their program and their enthusiasm, defending their statement, offering something, or suggesting the idea. It shows the difference of domination of modulation usage in each segment. However, this research is only limited to modulation, part of modality that is used in political context, especially debate. The future research is expected to have the similar approach to the other political text, such as speech or advertisement. The next research can also use another element of systemic functional linguistics, such as appraisal, to reveal the speaker's assessment of the content of his/her speech.

REFERENCES

- Asror, A. G. (2015). Bahasa pencitraan dalam iklan kampanye pilkada kabupaten Bojonegoro. *MAGISTRA*, 27(92), 24-34.
- Ayuningtias, D. I. (2014). Pidato politik di Indonesia: Sebuah kajian wacana kritis. *Prosodi Jurnal Ilmu Bahasa dan Sastra*, 8(1), 25-38.
- Bankole, M. A., & Ayoola, M. O. (2014). Mood and modality in Christian magazine: A Systemic Functional Analysis of Christian women mirror. *International Journal of Humanities and Social Science*, 4(14), 138-149.
- Darby, M. (2007). Debate: A teaching-learning strategy for developing competence in communication and critical thinking. *Journal of Dental Hygienists' Association*, 81(4), 1-10.
- Djarmika. (2012). *Perilaku bahasa Indonesia di dalam teks kontrak dari kaca mata linguistik sistemik fungsional*. Surakarta: UNS Press.
- Erlynda, T. (2016). *Wacana feminisme terkait pendidikan dan ekonomi di Indonesia: Analisis wacana kritis posisi feminisme Tri Rismaharini dalam debat pilkada Surabaya 2015* (Unpublished Thesis). Yogyakarta: Universitas Gajah Mada.
- Halliday, M. A. K. (2014). *Halliday's introduction to functional grammar*. London: Routledge.
- Katrňáková, H. (2001). Sociolinguistic and pragmatic aspects of public speaking discourse. *Brno Studies in English*, 27(1), 11-21.
- Kurniawati, D., & Kurniawan, T. O. (2017). Using highlighted journal strategy in teaching analytical exposition text. *English Education: Jurnal Tadris Bahasa Inggris*, 10(2), 194-210.
- Maretha, C. (2016). *Analisis wacana kritis pidato "Britain Awake" oleh Margaret Thatcher* (Unpublished Thesis). Yogyakarta: Universitas Gajah Mada.
- Munfarida, E. (2014). Analisis wacana kritis dalam perspektif Norman Fairclough. *KOMUNIKA: Jurnal Dakwah dan Komunikasi*, 8(1), 1-19.
- Onwuegbuzie, A. J., Leech, N. L., Collins, K. M. T. (2012). Qualitative analysis techniques for the review of the literature. *The Qualitative Reports*, 17(28), 1-29.
- Pastor, M. L. C. (2012). A contrastive analysis of epistemic modality in scientific English. In *Revista de Lengua para fines especificos* (Vol. 18, pp. 115-132). Universidad de Las Palmas de Gran Canaria.
- Pusparini, A., Djarmika., Santosa, R. (2017). Analisis sistem 'Appraisal' berita proses eksekusi 'Duo Bali Nine' (Pendekatan linguistik sistemik fungsional). *Paramasastra: Jurnal Ilmiah Bahasa dan Sastra*, 4(2), 193-208.
- Santosa, R. (2003). *Semiotika sosial: Pandangan terhadap bahasa*. Surabaya: Pustaka Eureka dan JP Press.
- Sudaryanto. (2015). *Metode dan aneka teknik analisis bahasa: Pengantar penelitian wahana kebudayaan secara linguistik*. Yogyakarta: Sanata Dharma University Press.
- Tarigan, H. G. (2008). *Berbicara: Sebagai suatu keterampilan berbahasa*. Bandung: Angkasa.
- Valipour, V., & Aidinlou, N. A. (2011). An investigation of metaphorical modality in Barack Obama's speeches from systemic functional perspective. *International Journal of Basic and Applied Science*, 3(1), 28-33.
- Vold, E. T. (2006). Epistemic modality markers in research articles: A cross-linguistic and cross-disciplinary study. *International Journal of Applied Linguistics*, 16(1), 61-87.
- Wang, X. (2014). The mood and modality in the Bible: A systemic functional perspective. *Theory & Practice in Language Studies*, 4(2), 255-261.