



Sphingomyelin Synthase 1 (SMS1) Downregulation Is Associated With Sphingolipid Reprogramming and a Worse Prognosis in Melanoma

Fatima Bilal^{1,2,3,4}, Anne Montfort^{1,2,4}, Julia Gilhodes⁵, Virginie Garcia^{1,2}, Joëlle Riond^{1,2}, Stéphane Carpentier^{1,2,4}, Thomas Filleron⁵, Céline Colacios^{1,2,4}, Thierry Levade^{1,2,4,6}, Ahmad Daher³, Nicolas Meyer^{1,4,5}, Nathalie Andrieu-Abadie^{1,2} and Bruno Ségui^{1,2,4*}

¹ INSERM UMR 1037, CRCT, Toulouse, France, ² Equipe Labellisée Ligue Contre Le Cancer, Toulouse, France, ³ Ecole Doctorale de Sciences et Technologies, Université Libanaise, Beirut, Lebanon, ⁴ Université Toulouse III – Paul Sabatier, Toulouse, France, ⁵ Institut Universitaire du Cancer, Toulouse, France, ⁶ Laboratoire de Biochimie, CHU Purpan, Institut Fédératif de Biologie, Toulouse, France

OPEN ACCESS

Edited by:

Pascale Cohen,
Université Claude Bernard Lyon 1,
France

Reviewed by:

Paola Giussani,
University of Milan, Italy
Youssef Zeidan,
American University of Beirut,
Lebanon
Liana C. Silva,
Universidade de Lisboa, Portugal

*Correspondence:

Bruno Ségui
bruno.segui@inserm.fr

Specialty section:

This article was submitted to
Experimental Pharmacology
and Drug Discovery,
a section of the journal
Frontiers in Pharmacology

Received: 19 November 2018

Accepted: 08 April 2019

Published: 30 April 2019

Citation:

Bilal F, Montfort A, Gilhodes J, Garcia V, Riond J, Carpentier S, Filleron T, Colacios C, Levade T, Daher A, Meyer N, Andrieu-Abadie N and Ségui B (2019) Sphingomyelin Synthase 1 (SMS1) Downregulation Is Associated With Sphingolipid Reprogramming and a Worse Prognosis in Melanoma. *Front. Pharmacol.* 10:443. doi: 10.3389/fphar.2019.00443

Sphingolipid (SL) metabolism alterations have been frequently reported in cancer including in melanoma, a bad-prognosis skin cancer. In normal cells, *de novo* synthesized ceramide is mainly converted to sphingomyelin (SM), the most abundant SL, by sphingomyelin synthase 1 (SMS1) and, albeit to a lesser extent, SMS2, encoded by the *SGMS1* and *SGMS2* genes, respectively. Alternatively, ceramide can be converted to glucosylceramide (GlcCer) by the GlcCer synthase (GCS), encoded by the *UGCG* gene. Herein, we provide evidence for the first time that SMS1 is frequently downregulated in various solid cancers, more particularly in melanoma. Accordingly, various human melanoma cells displayed a SL metabolism signature associated with (i) a robust and a low expression of *UGCG* and *SGMS1/2*, respectively, (ii) higher *in situ* enzyme activity of GCS than SMS, and (iii) higher intracellular levels of GlcCer than SM. SMS1 was expressed at low levels in most of the human melanoma biopsies. In addition, several mutations and increased CpG island methylation in the *SGMS1* gene were identified that likely affect SMS1 expression. Finally, low SMS1 expression was associated with a worse prognosis in metastatic melanoma patients. Collectively, our study indicates that SMS1 downregulation in melanoma enhances GlcCer synthesis, triggering an imbalance in the SM/GlcCer homeostasis, which likely contributes to melanoma progression. Evaluating SMS1 expression level in tumor samples might serve as a biomarker to predict clinical outcome in advanced melanoma patients.

Keywords: sphingolipids, ceramide, glucosylceramide, prognosis biomarker, cancer

INTRODUCTION

Melanoma is the most dangerous and deadliest form of skin cancers. Despite emerging targeted therapies and immunotherapies, most of the patients do not respond optimally, and/or develop acquired resistance (Eroglu and Ribas, 2016; Sharma et al., 2017).

Sphingolipids (SL) are bioactive molecules that play key roles in plasma membrane homeostasis and dynamics as well as in many cellular processes including cell death and proliferation as

well as cancer progression (Hannun, 1996; Hannun and Obeid, 2002; Ogretmen and Hannun, 2004; Segui et al., 2006). In melanoma, numerous studies have documented alterations in SL metabolism (Colie et al., 2009; Sorli et al., 2013; Albinet et al., 2014; Mrad et al., 2016; Leclerc et al., 2018). Glucosylceramide synthase (GCS), which converts ceramide to glucosylceramide (GlcCer), is involved in melanoma progression in mice (Deng et al., 2002; Weiss et al., 2003). To the best of our knowledge, sphingomyelin synthases SMS1 and SMS2 (encoded by the *SGMS1* and *SGMS2* genes), which metabolize ceramide into sphingomyelin (SM) (Huitema et al., 2004; Yamaoka et al., 2004), the most abundant SL in mammalian cells (Lafont et al., 2010), have not been analyzed in melanoma.

Herein, we show that SMS1 downregulation (i) occurs frequently in melanoma, (ii) is associated with SL reprogramming, and (iii) constitutes a worse prognosis biomarker in metastatic melanoma.

MATERIALS AND METHODS

Macroarray Experiment

Cancer Profiling array II (#631777) including patient-derived cDNA tumor and non-tumor samples was purchased from BD Biosciences Clontech. Human samples were collected in accordance with all applicable laws and regulations in an ethical manner. Membrane was successively hybridized according to the manufacturer's instructions with SMS1 and ubiquitin ³²P-labeled probes generated using a random nonamer primer labeling procedure (# RPN1604, Amersham Biosciences). The membrane was exposed to an intensifying screen that was developed using PhosphorImager and Image Quant software.

SGMS1, *SGMS2*, and *UGCG* Expression and Mutations in Human Melanoma

SGMS1, *SGMS2*, and *UGCG* expression was evaluated from Oncomine database (Haqq et al., 2005; Talantov et al., 2005; Riker et al., 2008) and the cancer genome atlas (TCGA) melanoma (Cancer Genome Atlas Network, 2015). TCGA genomic and clinical data were downloaded from the UCSC cancer genome browser project¹. The analysis population consisted of 342 patients with distant metastasis for whom RNAseq and clinical data overlap. All survival times were calculated from the date of specimen procurement and were estimated by the Kaplan Meier method with 95% confidence intervals (CI). Univariate analyses were performed using Cox proportional hazards model. Alternatively, *SGMS1*, *SGMS2*, and *UGCG* mutation analyses in human melanoma were assessed on cBioportal² (Cerami et al., 2012; Gao et al., 2013).

SGMS1 Methylation Analysis

The correlation between *SGMS1* expression and methylation status of *SGMS1* CpGs in metastatic patient samples was analyzed using the TCGA melanoma RNA-seq and DNA methylation

Illumina datasets. For each analyzed CpG, the rho values, indicating the Spearman's rank correlation coefficients between the CpG methylation and the *SGMS1* expression, are reported. The organization of the *SGMS1* locus is depicted in **Figure 2A** as previously described (Vladychenskaya et al., 2004).

Melanoma Cell Lines

Human melanoma cell lines (M249, SKMEL28, A375, WM9, WM35, WM115, WM266, WM793, WM1346, COLO829, and G361) were from ATCC or Wistar institute.

Determination of *in situ* SMS and GCS Activities

1×10^6 melanoma cells were incubated with 2.5 μ M C6-NBD-ceramide (Sigma) solubilized in ethanol and SMS and GCS activities were measured as previously described (Lafont et al., 2010; Bilal et al., 2017a).

Analysis of Sphingolipids

Sphingolipids were analyzed from 1.10^6 melanoma cells by liquid chromatography/mass spectrometry (LC/MS) as previously described (Bilal et al., 2017b).

qRT-PCR Analysis

Total RNA was reverse-transcribed using 1 μ g of input RNA and random primers (SuperScript II, Invitrogen). qRT-PCR reactions were performed in duplicate on StepOne apparatus (Applied Biosystems) using SYBR Green (QuantiTect, Qiagen) as fluorescent detection dye. Results were quantified and mRNA expression for each target gene (*UGCG*, *SGMS1*, or *SGMS2*) was determined by normalization to reference genes (β -actin and GAPDH) using the Δ Ct method. Primers for *UGCG* and reference genes were from Qiagen. Primers for *SGMS1* and *SGMS2* were from Sigma (Lafont et al., 2010).

Statistics and Reproducibility

Statistical significance of differences between groups was evaluated using the Graph-Pad Prism 7 software. For multiple comparisons, an Anova test was used. Wilcoxon test was used in **Figure 1B**. Differences were considered to be statistically significant when $p < 0.05$ (* $p < 0.05$; ** $p < 0.01$; *** $p < 0.001$).

RESULTS

SMS1 Downregulation in Melanoma Is Associated With SL Metabolism Reprogramming

We initially performed a macroarray to evaluate the expression of SMS1 in matched tumor and non-tumor samples from the same patients (**Figure 1A**). The data analysis with a threshold of 1.5 showed that, whereas SMS1 was up-regulated in 11% of tumor samples, it was down-regulated in 46% of tumor samples (**Supplementary Table 1**). As a matter of fact, SMS1 was most frequently down-regulated in vulva (5 out of 5), testis (9 out of 10), and skin (9 out of 10) cancers, including melanoma (6

¹<https://genome-cancer.ucsc.edu>

²<http://www.cbioportal.org/>

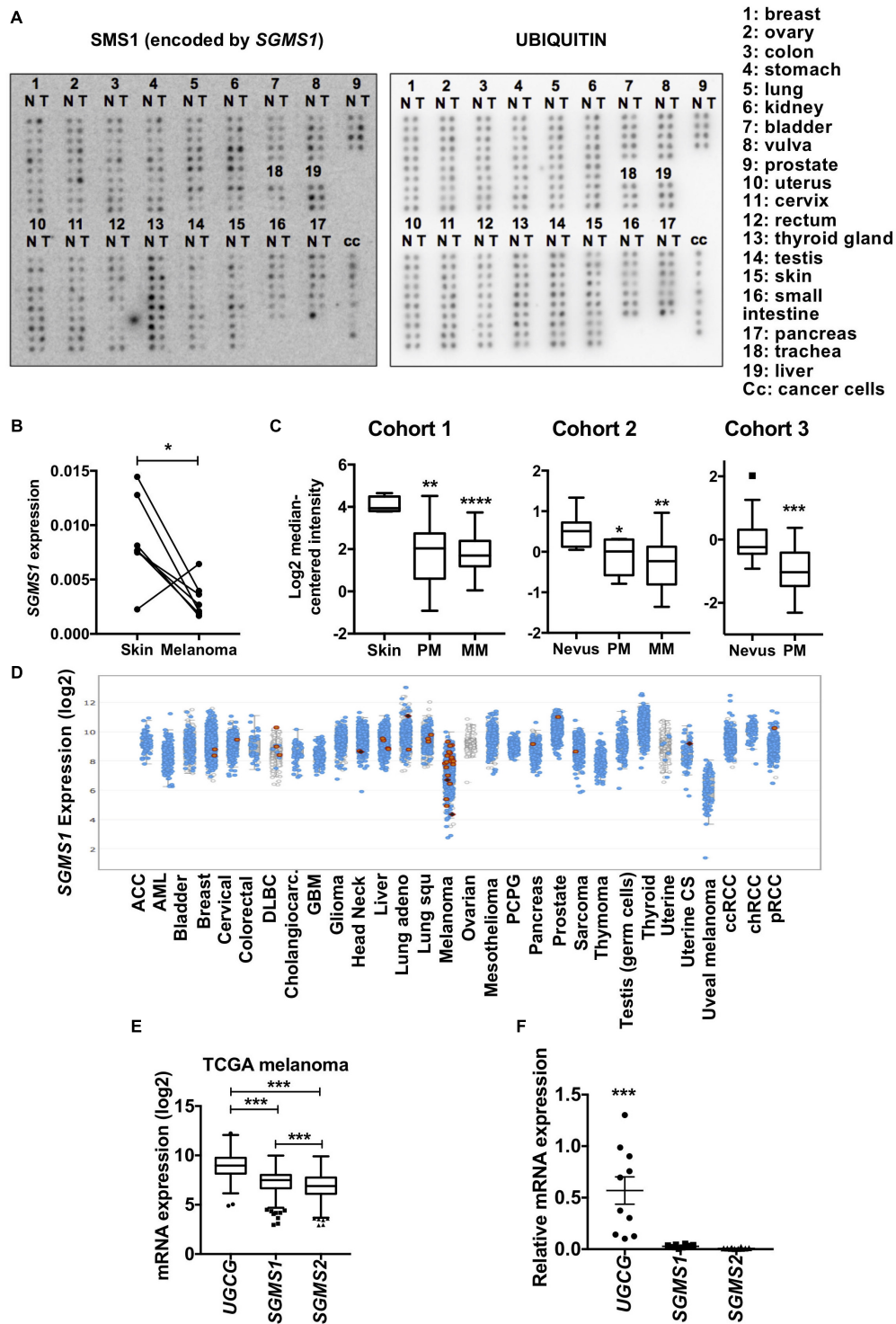
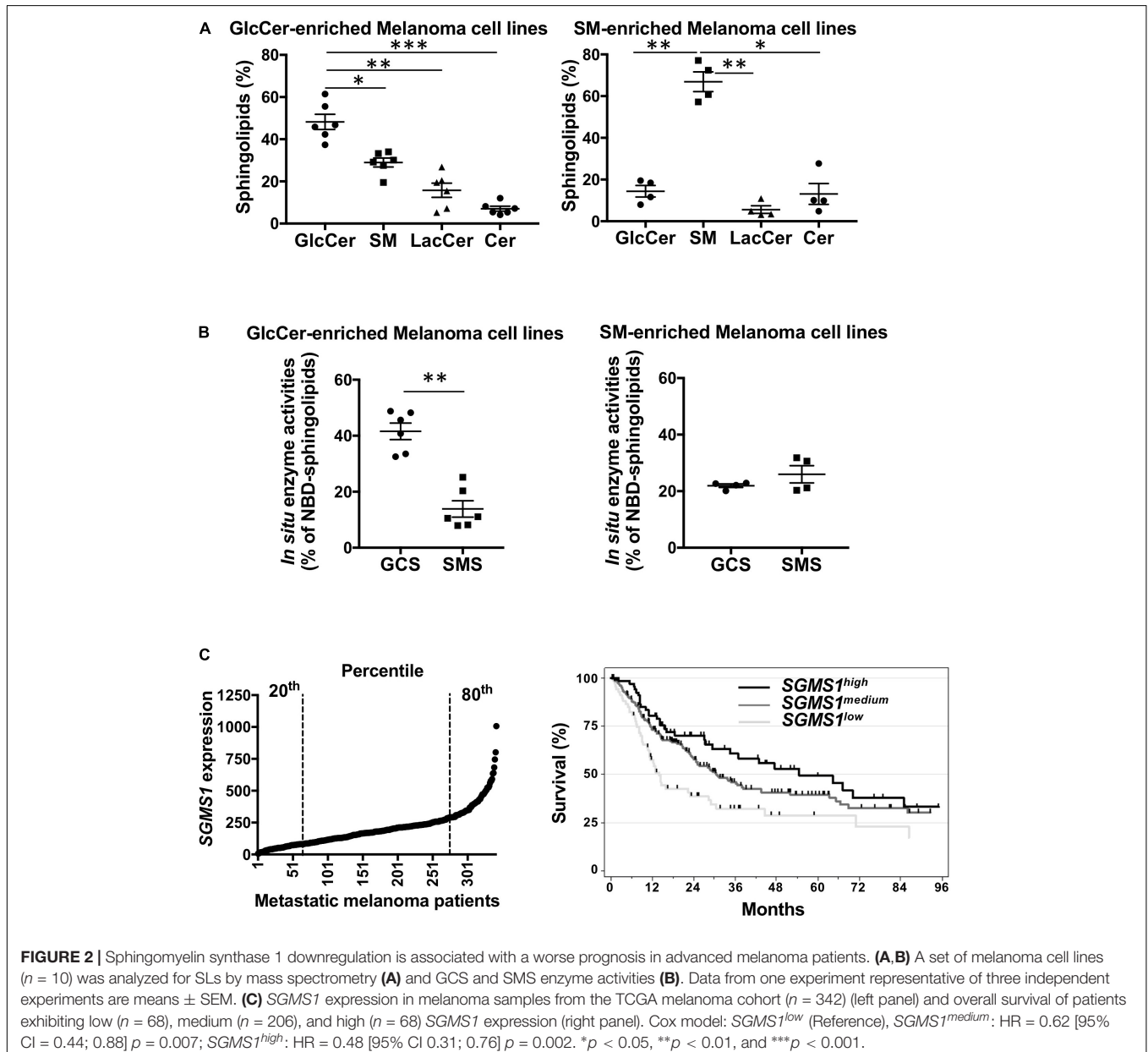


FIGURE 1 | Sphingomyelin synthase 1 (SMS1) is frequently downregulated in melanoma. **(A)** cDNA samples isolated from normal (N) and tumor (T) tissues from the same patient were compared. Expression of *SGMS1* (left panel) and ubiquitin (right panel). **(B)** The *SGMS1* expression was normalized to ubiquitin and expressed for each pair in normal skin and melanoma samples. **(C)** *SGMS1* expression was analyzed in 3 different cohorts from Oncomine in normal Skin ($n = 4$), primary (PM; $n = 14$), and metastatic (MM; $n = 39$) melanoma (Ricker's cohort) (left panel); in nevus ($n = 9$), primary (PM; $n = 6$), and metastatic (MM; $n = 19$) melanoma (Haqq's cohort) (middle panel); in nevus ($n = 18$) and primary melanoma (PM; $n = 45$) (Talantov's cohort) (right panel). **(D)** The expression of *SGMS1* was analyzed in various cancer type cohorts from cBioportal. **(E)** The expression of *UGCG*, *SGMS1*, and *SGMS2* was analyzed in melanoma samples from the TCGA metastatic melanoma patients ($n = 342$). **(F)** A set of melanoma cell lines ($n = 10$) was analyzed for the expression of *UGCG*, *SGMS1*, and *SGMS2* by RT-qPCR ($n = 10$). Data from at least two independent experiments are means \pm SEM. * $p < 0.05$, ** $p < 0.01$, *** $p < 0.001$, and **** $p < 0.0001$.

out of 7) (Figure 1B and Supplementary Table 1). Accordingly, our transcriptomic analysis in 3 different cohorts from published database indicates that *SGMS1* was downregulated in primary and metastatic human melanoma as compared to normal skin and nevus (Figure 1C; Haqq et al., 2005; Talantov et al., 2005; Riker et al., 2008). In contrast, the expression of *SGMS2* and *UGCG*, encoding SMS2 and GCS, respectively, remained unchanged (Supplementary Figure 1A). We next evaluated the expression of *SGMS1* in various cancer types from the TCGA database. Strikingly, melanoma exhibited the lowest expression of *SGMS1* (Figure 1D). Moreover, melanoma expressed *SGMS2* at rather low levels, while expressing *UGCG* at high levels (Supplementary Figure 1B). In metastatic melanoma from the TCGA, the expression of *UGCG* was significantly higher than

that of *SGMS1* and *SGMS2* (Figure 1E). Accordingly, melanoma cells exhibited low *SGMS1* and *SGMS2* expression, while they expressed *UGCG* at higher levels (Figure 1F).

We next evaluated the SL metabolism signature in human melanoma cell lines. Whereas four melanoma cell lines exhibited a higher proportion of SM, six were enriched in GlcCer (Figure 2A). Accordingly, *in situ* enzyme activity was significantly higher for GCS than for SMS in the cell lines with high GlcCer proportion only (Figure 2B). Consequently, endogenous intracellular levels of GlcCer were greater than SM and other SL species as evaluated by mass spectrometry for those six melanoma cell lines (Figure 2A and Supplementary Table 2). Of note, neither the mutation status (Bairoch, 2018) nor the origin of the melanoma cell lines (i.e., from radial or vertical



growth phase or metastasis) were associated with a specific SL signature (**Supplementary Table 3**).

SMS1 Downregulation in Human Melanoma Is Associated With a Worse Prognosis

To get insight into the molecular mechanisms that may account for SMS1 downregulation and/or inhibition of enzyme activity, we evaluated *SGMS1* mutation and methylation status in the public databases of melanoma. Whereas *SGMS2* and *UGCG* were mutated with low frequency, *SGMS1* exhibited a higher mutation rate in the coding sequence (**Supplementary Figure 2**). Most of the mutations were missense mutations and some of them affected residues in the catalytic domain (**Supplementary Figure 2** and **Supplementary Table 4**). In the TCGA melanoma cohort, 7.7% of the 287 sequenced samples were mutated (16 missense mutations, 2 non-sense mutations and 4 deep deletions). One of the non-sense mutations (W309*) was also found in one specimen from another melanoma cohort (**Supplementary Table 4**). The other non-sense mutation (R387*) was also found in colorectal carcinoma, sarcoma and uterus carcinoma (data not shown).

To delineate the effect of DNA methylation on the regulation of *SGMS1* expression, we analyzed the TCGA metastatic melanomas. Among the 50 *SGMS1* Illumina 450K probes with workable data, the DNA methylation level of 33 probes displayed a significant correlation with expression. Ten probes out of the 14 located in the CpG island 1 and its shores, as well as 3 out of the 3 in the CpG island 2 and its shores, both containing putative promoter sequences, were inversely correlated with the expression level. In contrast, 13 CpG out of the 16 located outside CpG islands and shores were positively correlated with the expression (**Supplementary Figures 3A,B**). Thus, hypermethylation of CpG islands and hypomethylation events in open sea were significantly associated with the decrease in *SGMS1* expression, indicating the regulation of SMS1 expression in metastatic melanoma might rely, at least partly, on DNA methylation of the *SGMS1* locus.

Finally, the clinical outcome in metastatic melanoma patients exhibiting low (20th percentile, medium (between the 20th and 80th percentile), high (80th percentile) *SGMS1*, *SGMS2*, and *UGCG* expression was analyzed in the TCGA cohort. Whereas *UGCG* and *SGMS2* expression did not impact on overall survival (**Supplementary Figure 4**), low *SGMS1* expression was statistically associated with shortened overall survival (**Figure 2C**).

Collectively, our data indicate that melanoma exhibit a SL metabolism reprogramming associated with SMS1 downregulation, which constitutes a worse-prognosis biomarker.

DISCUSSION

Herein, we provide evidence for the first time that melanoma exhibit SL metabolism changes associated with SMS1 downregulation, not only decreasing SM synthesis but also

promoting the synthesis of GlcCer, which facilitates tumor progression in mouse melanoma models (Deng et al., 2002; Weiss et al., 2003). Interestingly, a recent study indicates the formation of an heterocomplex between SMS1 and GCS in mammalian cells, which enhances and reduces SM, and GlcCer synthesis, respectively (Hayashi et al., 2018). SMS1 downregulation may limit the formation of such a complex, promoting GlcCer synthesis in melanoma. Since *de novo* synthesized ceramide is the substrate of both SMS1 and GCS in the Golgi, downregulation of SMS1 likely increases the ceramide pool available for GCS to produce GlcCer.

Strikingly, low SMS1 expression is associated with a worse prognosis in metastatic melanoma, suggesting that reduced SM synthesis likely contributes to melanoma progression. SMS1 down-regulation, which occurs in primary melanoma, is likely an early event in melanomagenesis. Several mutations affecting the coding sequence of *SGMS1* probably contribute to the decreased SMS1 expression. In the TCGA melanoma cohort, 5 out of 16 missense mutations and 1 non-sense mutation were associated with shallow deletions. Moreover, 4 deep deletions were identified as well as 17 CpG located on the two CpG islands and their shores, the methylation of which was correlated with *SGMS1* downregulation in metastatic melanoma. SMS1 expression and activity are likely regulated by translational and post-translational mechanisms such as recently described in Bcr-Abl-expressing leukemia cells (Moorthi et al., 2018). Whereas key driver mutations have been identified in melanoma (Hodis et al., 2012), we found no correlation between mutation status and SL signature.

Ceramide clearance catalysed by GCS plays a role in multidrug resistance of cancer cell lines (Lavie et al., 1997; Liu et al., 2004; Sun et al., 2006; Liu et al., 2010). However, our team provided genetic evidence that GCS is unlikely a critical enzyme to confer melanoma resistance to chemotherapy in a mouse melanoma model (Veldman et al., 2003). Because SLs are key components of the plasma membrane, modulating various signaling pathways (Hannun, 1996; Hannun and Obeid, 2002), future experiments will address whether or not SM/GlcCer homeostasis alterations in melanoma impair the efficacy of emerging therapies such as targeted therapies and immunotherapies. Finally, it remains to evaluate whether low SMS1 expression in melanoma samples is a valuable biomarker to predict the resistance of patients to emerging therapies.

ETHICS STATEMENT

As clearly stated in the manuscript, the results shown here are part based upon data generated by the TCGA Research Network. In addition, we have analyzed data from the oncomine database. We have performed a macroarray to evaluate the expression of SMS1 in matched tumor and non-tumor samples from the same patients by using the Cancer Profiling array II (Clontech #631777) membrane.

AUTHOR CONTRIBUTIONS

FB, VG, and SC performed the experiments. JG and JR performed the methylation analyses. JG and TF performed the bio-statistical analyses of the TCGA melanoma. AM, CC, TL, AD, NM, and NA-A edited the manuscript. SB designed and supervised the study and wrote the manuscript.

FUNDING

The results shown here are part based upon data generated by the TCGA Research Network: <http://cancergenome.nih.gov/>. This work was supported by Ligue Nationale Contre le

Cancer, INSERM Transfert, ROTARY Toulouse clubs, Fondation Toulouse Cancer Santé, INSERM, and Paul Sabatier University (Toulouse III). BF has been co-funded by the “Association de Spécialisation et d’Orientation Scientifique” and the “Plateforme de Recherche et d’Analyse en Sciences de l’Environnement (PRASE)” (Lebanon).

SUPPLEMENTARY MATERIAL

The Supplementary Material for this article can be found online at: <https://www.frontiersin.org/articles/10.3389/fphar.2019.00443/full#supplementary-material>

REFERENCES

- Albinet, V., Bats, M. L., Huwiler, A., Rochaix, P., Chevreau, C., Segui, B., et al. (2014). Dual role of sphingosine kinase-1 in promoting the differentiation of dermal fibroblasts and the dissemination of melanoma cells. *Oncogene* 33, 3364–3373. doi: 10.1038/ncr.2013.303
- Bairoch, A. (2018). The cellosaurus, a cell-line knowledge resource. *J. Biomol. Tech.* 29, 25–38. doi: 10.7171/jbt.18-2902-002
- Bilal, F., Peres, M., Andrieu-Abadie, N., Levade, T., Badran, B., Daher, A., et al. (2017a). Method to measure sphingomyelin synthase activity changes in response to CD95L. *Methods Mol. Biol.* 1557, 207–212. doi: 10.1007/978-1-4939-6780-3_19
- Bilal, F., Peres, M., Le Faouder, P., Dupuy, A., Bertrand-Michel, J., Andrieu-Abadie, N., et al. (2017b). Liquid chromatography-high resolution mass spectrometry method to study sphingolipid metabolism changes in response to CD95L. *Methods Mol. Biol.* 1557, 213–217. doi: 10.1007/978-1-4939-6780-3_20
- Cancer Genome Atlas Network (2015). Genomic classification of cutaneous melanoma. *Cell* 161, 1681–1696. doi: 10.1016/j.cell.2015.05.044
- Cerami, E., Gao, J., Dogrusoz, U., Gross, B. E., Sumer, S. O., Aksoy, B. A., et al. (2012). The cBio cancer genomics portal: an open platform for exploring multidimensional cancer genomics data. *Cancer Discov.* 2, 401–404. doi: 10.1158/2159-8290.CD-12-0095
- Colie, S., Van Veldhoven, P. P., Kedjouar, B., Bedia, C., Albinet, V., Sorli, S. C., et al. (2009). Disruption of sphingosine 1-phosphate lyase confers resistance to chemotherapy and promotes oncogenesis through Bcl-2/Bcl-xL upregulation. *Cancer Res.* 69, 9346–9353. doi: 10.1158/0008-5472.CAN-09-2198
- Deng, W., Li, R., Guerrero, M., Liu, Y., and Ladisch, S. (2002). Transfection of glucosylceramide synthase antisense inhibits mouse melanoma formation. *Glycobiology* 12, 145–152. doi: 10.1093/glycob/12.3.145
- Eroglu, Z., and Ribas, A. (2016). Combination therapy with BRAF and MEK inhibitors for melanoma: latest evidence and place in therapy. *Ther. Adv. Med. Oncol.* 8, 48–56. doi: 10.1177/1758834015616934
- Gao, J., Aksoy, B. A., Dogrusoz, U., Dresdner, G., Gross, B., Sumer, S. O., et al. (2013). Integrative analysis of complex cancer genomics and clinical profiles using the cBioPortal. *Sci. Signal.* 6:11. doi: 10.1126/scisignal.2004088
- Hannun, Y. A. (1996). Functions of ceramide in coordinating cellular responses to stress. *Science* 274, 1855–1859. doi: 10.1126/science.274.5294.1855
- Hannun, Y. A., and Obeid, L. M. (2002). The Ceramide-centric universe of lipid-mediated cell regulation: stress encounters of the lipid kind. *J. Biol. Chem.* 277, 25847–25850. doi: 10.1074/jbc.r200008200
- Haqq, C., Nosrati, M., Sudilovsky, D., Crothers, J., Khodabakhsh, D., Pulliam, B. L., et al. (2005). The gene expression signatures of melanoma progression. *Proc. Natl. Acad. Sci. U.S.A.* 102, 6092–6097.
- Hayashi, Y., Nemoto-Sasaki, Y., Matsumoto, N., Hama, K., Tanikawa, T., Oka, S., et al. (2018). Complex formation of sphingomyelin synthase 1 with glucosylceramide synthase increases sphingomyelin and decreases glucosylceramide levels. *J. Biol. Chem.* 293, 17505–17522. doi: 10.1074/jbc.RA118.002048
- Hodis, E., Watson, I. R., Kryukov, G. V., Arold, S. T., Imielinski, M., Theurillat, J. P., et al. (2012). A landscape of driver mutations in melanoma. *Cell* 150, 251–263.
- Huitema, K., Van Den Dikkenberg, J., Brouwers, J. F., and Holthuis, J. C. (2004). Identification of a family of animal sphingomyelin synthases. *EMBO J.* 23, 33–44. doi: 10.1038/sj.emboj.7600034
- Lafont, E., Milhas, D., Carpentier, S., Garcia, V., Jin, Z. X., Umehara, H., et al. (2010). Caspase-mediated inhibition of sphingomyelin synthesis is involved in FasL-triggered cell death. *Cell Death Differ.* 17, 642–654. doi: 10.1038/cdd.2009.130
- Lavie, Y., Cao, H., Volner, A., Lucci, A., Han, T. Y., Geffen, V., et al. (1997). Agents that reverse multidrug resistance, tamoxifen, verapamil, and cyclosporin A, block glycosphingolipid metabolism by inhibiting ceramide glycosylation in human cancer cells. *J. Biol. Chem.* 272, 1682–1687. doi: 10.1074/jbc.272.3.1682
- Leclerc, J., Garandeau, D., Pandiani, C., Gaudel, C., Bille, K., Nottet, N., et al. (2018). Lysosomal acid ceramidase Asah1 controls the transition between invasive and proliferative phenotype in melanoma cells. *Oncogene* 38, 1282–1295. doi: 10.1038/s41388-018-0500-0
- Liu, Y. Y., Gupta, V., Patwardhan, G. A., Bhinge, K., Zhao, Y., Bao, J., et al. (2010). Glucosylceramide synthase upregulates MDR1 expression in the regulation of cancer drug resistance through cSrc and beta-catenin signaling. *Mol. Cancer* 9:145. doi: 10.1186/1476-4598-9-145
- Liu, Y. Y., Han, T. Y., Yu, J. Y., Bitterman, A., Le, A., Giuliano, A. E., et al. (2004). Oligonucleotides blocking glucosylceramide synthase expression selectively reverse drug resistance in cancer cells. *J. Lipid Res.* 45, 933–940. doi: 10.1194/jlr.m300486-jlr200
- Moorthi, S., Burns, T. A., Yu, G. Q., and Luberto, C. (2018). Bcr-Abl regulation of sphingomyelin synthase 1 reveals a novel oncogenic-driven mechanism of protein up-regulation. *FASEB J.* 32, 4270–4283. doi: 10.1096/fj.201701016R
- Mrad, M., Imbert, C., Garcia, V., Rambow, F., Therville, N., Carpentier, S., et al. (2016). Downregulation of sphingosine kinase-1 induces protective tumor immunity by promoting M1 macrophage response in melanoma. *Oncotarget* 7, 71873–71886. doi: 10.18632/oncotarget.12380
- Ogretmen, B., and Hannun, Y. A. (2004). Biologically active sphingolipids in cancer pathogenesis and treatment. *Nat. Rev. Cancer* 4, 604–616. doi: 10.1038/nrc1411
- Riker, A. I., Enkemann, S. A., Fodstad, O., Liu, S., Ren, S., Morris, C., et al. (2008). The gene expression profiles of primary and metastatic melanoma yields a transition point of tumor progression and metastasis. *BMC Med. Genomics* 1:13. doi: 10.1186/1755-8794-1-13
- Segui, B., Andrieu-Abadie, N., Jaffrezou, J. P., Benoist, H., and Levade, T. (2006). Sphingolipids as modulators of cancer cell death: potential therapeutic targets. *Biochim. Biophys. Acta* 1758, 2104–2120. doi: 10.1016/j.bbame.2006.05.024
- Sharma, P., Hu-Lieskovan, S., Wargo, J. A., and Ribas, A. (2017). Primary, adaptive, and acquired resistance to cancer immunotherapy. *Cell* 168, 707–723. doi: 10.1016/j.cell.2017.01.017
- Sorli, S. C., Colie, S., Albinet, V., Dubrac, A., Touriol, C., Guilbaud, N., et al. (2013). The nonlysosomal beta-glucosidase GBA2 promotes endoplasmic reticulum stress and impairs tumorigenicity of human melanoma cells. *FASEB J.* 27, 489–498. doi: 10.1096/fj.12-215152

- Sun, Y. L., Zhou, G. Y., Li, K. N., Gao, P., Zhang, Q. H., Zhen, J. H., et al. (2006). Suppression of glucosylceramide synthase by RNA interference reverses multidrug resistance in human breast cancer cells. *Neoplasma* 53, 1–8.
- Talantov, D., Mazumder, A., Yu, J. X., Briggs, T., Jiang, Y., Backus, J., et al. (2005). Novel genes associated with malignant melanoma but not benign melanocytic lesions. *Clin. Cancer Res.* 11, 7234–7242. doi: 10.1158/1078-0432.ccr-05-0683
- Veldman, R. J., Mita, A., Cuvillier, O., Garcia, V., Klappe, K., Medin, J. A., et al. (2003). The absence of functional glucosylceramide synthase does not sensitize melanoma cells for anticancer drugs. *FASEB J.* 17, 1144–1146. doi: 10.1096/fj.02-1053fje
- Vladychenskaya, I. P., Dergunova, L. V., Dmitrieva, V. G., and Limborska, S. A. (2004). Human gene MOB: structure specification and aspects of transcriptional activity. *Gene* 338, 257–265. doi: 10.1016/j.gene.2004.06.003
- Weiss, M., Hettmer, S., Smith, P., and Ladisch, S. (2003). Inhibition of melanoma tumor growth by a novel inhibitor of glucosylceramide synthase. *Cancer Res.* 63, 3654–3658.
- Yamaoka, S., Miyaji, M., Kitano, T., Umehara, H., and Okazaki, T. (2004). Expression cloning of a human cDNA restoring sphingomyelin synthesis and cell growth in sphingomyelin synthase-defective lymphoid cells. *J. Biol. Chem.* 279, 18688–18693. doi: 10.1074/jbc.m401205200
- Conflict of Interest Statement:** NM has worked as an investigator and/or consultant and/or speaker for: BMS, MSD, Amgen, Roche, GSK, Novartis, and Pierre Fabre. BS has worked as an investigator for BMS. The authors disclose they are in the process applying for a patent based upon these findings.
- The remaining authors declare that the research was conducted in the absence of any commercial or financial relationships that could be construed as a potential conflict of interest.
- Copyright © 2019 Bilal, Montfort, Gilhodes, Garcia, Riond, Carpentier, Filleron, Colacios, Levade, Daher, Meyer, Andrieu-Abadie and Ségui. This is an open-access article distributed under the terms of the Creative Commons Attribution License (CC BY). The use, distribution or reproduction in other forums is permitted, provided the original author(s) and the copyright owner(s) are credited and that the original publication in this journal is cited, in accordance with accepted academic practice. No use, distribution or reproduction is permitted which does not comply with these terms.