



# THE UNIVERSITY *of* EDINBURGH

## Edinburgh Research Explorer

### Effectiveness of self-compassion related therapies

**Citation for published version:**

Wilson, A, Mackintosh, K, Power, K & Chan, W 2019, 'Effectiveness of self-compassion related therapies: A systematic review and meta-analysis' *Mindfulness*, vol. 10, no. 6, pp. 979-995. DOI: 10.1007/s12671-018-1037-6

**Digital Object Identifier (DOI):**

[10.1007/s12671-018-1037-6](https://doi.org/10.1007/s12671-018-1037-6)

**Link:**

[Link to publication record in Edinburgh Research Explorer](#)

**Document Version:**

Publisher's PDF, also known as Version of record

**Published In:**

Mindfulness

**General rights**

Copyright for the publications made accessible via the Edinburgh Research Explorer is retained by the author(s) and / or other copyright owners and it is a condition of accessing these publications that users recognise and abide by the legal requirements associated with these rights.

**Take down policy**

The University of Edinburgh has made every reasonable effort to ensure that Edinburgh Research Explorer content complies with UK legislation. If you believe that the public display of this file breaches copyright please contact [openaccess@ed.ac.uk](mailto:openaccess@ed.ac.uk) providing details, and we will remove access to the work immediately and investigate your claim.





# Effectiveness of Self-Compassion Related Therapies: a Systematic Review and Meta-analysis

Alexander C. Wilson<sup>1,2</sup> · Kate Mackintosh<sup>1</sup> · Kevin Power<sup>3</sup> · Stella W. Y. Chan<sup>1</sup> 

© The Author(s) 2018

## Abstract

This systematic review and meta-analysis investigated whether self-compassion-related therapies, including compassion-focussed therapy, mindfulness-based cognitive therapy and acceptance and commitment therapy, are effective in promoting self-compassion and reducing psychopathology in clinical and subclinical populations. A total of 22 randomised controlled trials met inclusion criteria, with data from up to 1172 individuals included in each quantitative analysis. Effect sizes were the standardised difference in change scores between intervention and control groups. Results indicated that self-compassion-related therapies produced greater improvements in all three outcomes examined: self-compassion ( $g = 0.52$ , 95% CIs [0.32, 0.71]), anxiety ( $g = 0.46$ , 95% CIs [0.25, 0.66]) and depressive symptoms ( $g = 0.40$ , 95% CIs [0.23, 0.57]). However, when analysis was restricted to studies that compared self-compassion-related therapies to active control conditions, change scores were not significantly different between the intervention and control groups for any of the outcomes. Patient status (clinical vs. subclinical) and type of therapy (explicitly compassion-based vs. other compassion-related therapies, e.g. mindfulness) were not moderators of outcome. There was some evidence that self-compassion-related therapies brought about greater improvements in the negative than the positive subscales of the Self-Compassion Scale, although a statistical comparison was not possible. The methodological quality of studies was generally good, although risk of performance bias due to a lack of blinding of participants and therapists was a concern. A narrative synthesis found that changes in self-compassion and psychopathology were correlated in several studies, but this relationship was observed in both intervention and control groups. Overall, this review presents evidence that third-wave therapies bring about improvements in self-compassion and psychopathology, although not over and beyond other interventions.

**Keywords** Self-compassion · Anxiety · Depression · Compassion-focussed therapy · Mindfulness-based cognitive therapy · Meta-analysis

Self-compassion is the tendency to soothe oneself with kindness and non-judgemental understanding in times of difficulty and suffering (Neff 2003b; Gilbert 2009). Greater levels of self-compassion have been linked to reduced mental health

symptoms, with meta-analyses reporting large correlations between higher levels of self-compassion and lower levels of depression, anxiety and stress in adults ( $r = -0.54$ ; MacBeth and Gumley 2012) and adolescents ( $r = -0.55$ ; Marsh et al. 2018), as well as greater overall psychological well-being ( $r = 0.47$ ; Zessin et al. 2015). Motivated by the link between self-compassion and mental health, a range of compassion-based therapies have been developed (for a review, see Leaviss and Uttley 2015), and a meta-analysis has provided preliminary evidence that such therapies produce moderate positive changes in self-compassion and other mental health outcomes (Kirby et al. 2017). However, it is not possible to say from this meta-analysis whether self-compassion-related therapies are effective in treating individuals with clinical or subclinical levels of mental health problems because many of the samples included were drawn from the general non-clinical population. This therefore calls for an updated meta-analysis examining

**Electronic supplementary material** The online version of this article (<https://doi.org/10.1007/s12671-018-1037-6>) contains supplementary material, which is available to authorized users.

✉ Stella W. Y. Chan  
stella.chan@ed.ac.uk

<sup>1</sup> Section of Clinical Psychology, School of Health in Social Science, University of Edinburgh, Doorway 6 Medical Quad, Teviot Place, Edinburgh EH8 9AG, UK

<sup>2</sup> Department of Experimental Psychology, University of Oxford, Oxford, UK

<sup>3</sup> Department of Psychology, University of Stirling, Stirling, UK

the effectiveness of self-compassion-related therapies in clinical and subclinical populations.

Compassion-focussed therapy (CFT) is the intervention that most explicitly aims to modify self-compassion. It was developed for use with people with chronic mental health problems who experience high self-criticism and shame and who do not respond well to conventional therapies (Gilbert and Proctor 2006). CFT is grounded in a theoretical assumption that we have three affective systems (threat, drive and soothing) and that enhancing the soothing system helps us manage negative thoughts and emotions through promoting social bonding and positive self-repair behaviours (Gilbert 2009). Typical techniques used in CFT include self-compassionate meditation, imagery, letter writing and dialogic role-play (Gilbert 2009). Similar techniques are used in parallel therapies, such as mindful self-compassion therapy (MSC; Neff and Germer 2013). A meta-analysis (Kirby et al. 2017) has indicated that CFT and related therapies, such as MSC, improve levels of self-compassion ( $d = 0.70$ ), as well as reduce anxiety ( $d = 0.49$ ), depression ( $d = 0.64$ ) and psychological distress ( $d = 0.47$ ), in various groups both with and without mental health conditions.

While Kirby et al. (2017) exclusively reviewed CFT, a focus on self-compassion is not restricted to one modality of therapy. It is relevant across ‘third-wave’ therapies, such as mindfulness-based cognitive therapy (MBCT), dialectical behavioural therapy (DBT) and acceptance and commitment therapy (ACT). As such, the second edition of the MBCT manual (Segal et al. 2013) explicitly makes the promotion of self-compassion an aim of therapy and improvement in self-compassion as a mechanism of change in mindfulness therapies (for a review, see Gu et al. 2015). This is hardly surprising given that self-compassion and mindfulness are overlapping constructs. As such, mindfulness figures in Neff’s (2003a) three-part conceptualisation of self-compassion, alongside self-kindness and common humanity. Self-compassion is directly relevant to DBT, given that the DBT manual for borderline personality disorder includes several exercises designed to encourage self-compassion (Linehan 1993). Finally, self-compassion has also been linked theoretically to the core processes of ACT, in particular acceptance, cognitive diffusion, present moment awareness and self as context, which are all aimed at reducing self-criticism (Neff and Tirsch 2013). Based on the similarity between self-compassion and the underlying constructs in MBCT, DBT and ACT, it is reasonable to view these different interventions as part of a family of self-compassion-related therapies that could be evaluated as a group.

Just as the clinical significance of self-compassion is not limited to one therapeutic modality, it is also not limited to one psychological diagnosis. A tendency to be self-critical, which is viewed as the opposite of self-compassion, is seen as a universal feature of psychopathology (Clark et al. 1994; Gilbert and Proctor 2006). Also, in addition to depression, anxiety and stress (MacBeth and Gumley 2012), low self-compassion has been linked to symptomology in people with

persecutory delusions (Collett et al. 2016), auditory hallucinations (Dudley et al. 2018), eating disorders (Ferreira et al. 2013), and Cluster C personality disorders (Schanche et al. 2011). Psychotherapies that target self-compassion are therefore likely to be relevant across disorders. This is consistent with a transdiagnostic approach to therapy, which recognises that psychological disorders are often comorbid, share causal factors and have blurred diagnostic boundaries (Newby et al. 2015).

A final issue for consideration is that self-compassion is not necessarily a single, unitary construct. The most commonly used psychometric measure of self-compassion, the Self Compassion Scale (Neff 2003b), comprises six separate subscales including three positive and three negative: the positive subscales include self-kindness, common humanity and mindfulness, while the negative subscales include self-judgment, isolation and over-identification. These subscales have differing relationships with other psychological variables. Muris and Petrocchi (2017) found that the negative items were more strongly related to psychopathology than the positive items, and Neff (2016) found general trends for improvements in the negative subscales to predict reduced psychopathology and for the positive subscales to predict increased well-being in a randomised controlled trial (RCT) of MSC therapy. Given these differential relationships between self-compassion and mental health outcomes, the effect of therapy on self-compassion should be investigated as a multifaceted phenomenon.

This meta-analysis aimed to evaluate the effectiveness of self-compassion-related therapies, compared to a control condition, in clinical and subclinical populations. Our review extends previous reviews (Kirby et al. 2017; Leaviss and Uttley 2015) in three important ways. First, it is more inclusive of the type of therapies; thus, we use the general term ‘self-compassion-related therapies’ rather than CFT to refer to the therapies included in our review, as we take any intervention with the stated goal of directly or indirectly improving an individual’s level of self-compassion as relevant. Second, we focussed purely on groups with classifiable mental health symptoms presenting at either a subclinical or clinical level. Third, we assessed whether particular aspects of self-compassion are more modifiable in therapy than others. The previous reviews (Kirby et al. 2017; Leaviss and Uttley 2015) indicated that we should expect therapeutic outcome to show considerable variety across studies, and so we hypothesised that improvements in self-compassion and psychopathology would be moderated by the clinical status of participants and the type of control group and intervention used in the studies.

## Method

The review was conducted following the guidance by the Centre for Reviews and Dissemination (CRD 2009). This was originally designed as a systematic review and a protocol

was submitted to the PROSPERO International prospective register of systematic reviews (CRD42016033532; Mackintosh 2016). Due to the large number of studies identified during the literature search following submission of the protocol, we decided to limit our analysis to RCTs, as these offer the highest standard of evidence. The number of studies also allowed us to offer a quantitative, rather than purely qualitative, review, thereby providing more information for researchers and clinicians.

## Identification and Selection of Studies

A comprehensive literature search was conducted in July 2017 using five databases: PsycINFO, Medline, Embase, CINAHL and Cochrane Library. The following keywords were used: ‘compassion focused therapy\*’ or ‘compassionate mind training’ or ‘mindful self-compassion’ or (‘mindfulness based’ or ‘MBCT’ or ‘MBSR’ or ‘acceptance and commitment therapy\*’ or ‘ACT’ or ‘dialectical behaviour\* therapy\*’ or ‘DBT’ or ‘intervention’ or ‘treatment’ and ‘self-compassion’ or ‘self-kindness’). After removal of duplicates, studies were screened based on title. Next, abstracts and full-text articles were independently screened by two researchers according to the inclusion criteria (see below). Any ambiguities were resolved in discussion. Reference lists of the final set of studies included in the review were screened for further relevant studies, as were the reference lists of three previous reviews (Kirby et al. 2017; Leaviss and Uttley 2015; MacBeth and Gumley 2012). Additional searches were conducted on the publications of two key authors in the field of self-compassion (Neff and Gilbert) and publication lists on relevant websites ([www.self-compassion.org](http://www.self-compassion.org) and [www.compassionatemind.co.uk](http://www.compassionatemind.co.uk)).

## Eligibility Criteria

For inclusion, studies had to be RCTs evaluating an intervention with a self-compassion component against either an active intervention or a waitlist/treatment as usual control. We required the intervention to include at least one face-to-face session with a trained therapist. The study population had to consist of adults of 18 years and over who had a clinical or subclinical mental health problem, as assessed by formal clinical diagnosis or by a validated self-report measure. Self-compassion is relevant to a range of mental health problems, so this review was not restricted to any specific diagnosis. Studies needed to include a standardised measure of self-compassion. Where possible, we also extracted depression and anxiety scores. We focussed on symptoms of depression and anxiety as key outcome variables since these have been identified as linked to self-compassion in previous meta-analyses (MacBeth and Gumley 2012; Marsh et al. 2018). They are also common outcomes in RCTs, so it was likely that we would identify a sufficient number of studies to calculate

summary estimates of the effect of therapy on these two variables. Finally, all included studies needed to be published in a peer-reviewed journal in English.

## Data Extraction

Characteristics of the identified studies were independently extracted by two researchers; see Table 1 below and Tables 4 and 5 in the Appendix.

For the meta-analysis, we extracted outcome data for self-compassion from each paper and for depression and/or anxiety where these were reported. We extracted means and SDs pre- and post-treatment and sample sizes in the intervention and control groups. Where an intention-to-treat sample was used, we extracted the full sample size at randomisation, and where per-protocol results were given, we took the sample size of study completers, so that the weighting of studies in the meta-analysis would be proportional to the amount of data contributed. Generally, raw means were extracted, although in two cases (Kelly and Carter 2015; Kelly et al. 2017) only estimated means from multilevel modelling were reported.

We planned to accept any standardised measure of self-compassion, though in practice this meant either the Self-Compassion Scale (SCS; Neff 2003b) or the Self-Compassion Short-Form (SCS-SF; Raes et al. 2011) was required, as these are the only validated measures of the construct. The SCS is a 26-item self-report questionnaire, including six subscales, self-kindness, self-judgement, common humanity, isolation, mindfulness and over-identification. The first two subscales include 5 items and the others include 4 items; the total score is computed as the average of the six subscales. The SCS-SF includes 12 items in total (2 from each scale); SCS-SF and SCS full scores were reported to be almost perfectly correlated ( $r = 0.97$ ; Raes et al. 2011). As part of our review, we were interested in addressing whether different facets of self-compassion were more modifiable in therapy than others. Some studies reported breakdowns on the subscales, so we extracted all these scores; where results were not fully reported, we contacted the authors.

We accepted any psychometrically validated measure of depression and anxiety. If studies reported more than one measure of depression or anxiety, we selected the primary outcome or pooled the results if there was no a priori reason to favour one measure. In practice, this situation occurred only twice during data extraction. Kingston et al. (2015) reported anxiety and depression using both the Hospital Anxiety and Depression Scale (HADS) and Profile of Mood States (POMS). As the HADS was the clinical screening tool, we used this in our analysis. Hou et al. (2013) reported separate results for the State Anxiety Inventory (SAI) and Trait Anxiety Inventory (TAI), and to avoid an arbitrary choice of one over the other, we averaged the means.

**Table 1** Characteristics of studies included in the review

| Study                      | Clinical group   | Intervention ( <i>n</i> included in the analysis)   | Control ( <i>n</i> included in the analysis)  | Age ( <i>M</i> ± <i>SD</i> )<br>% female<br>Country |
|----------------------------|--|---|---|---|
| Arimitsu (2016)            | Mostly students, low in self-compassion (scoring below normative mean on Japanese SCS).  | Enhancing Self-Compassion Program (ESP), with protocol influenced by Gilbert's (2010) CFT. Exercises included loving-kindness meditation, letter writing, imagery, 3-chair work, etc. 7 weekly 1.5 h group sessions, plus 10 min daily practice. ( <i>n</i> = 16)                           | Waitlist, no treatment. ( <i>n</i> = 12)  | 21.3 ± 5.6<br>75%<br>Japan                          |
| Armstrong and Rimes (2016) | University students/staff screening high in neuroticism on EPQR-S. Half were positive for a DSM-IV disorder on interview.  | Manualised group MBCT, with protocol based on Segal et al. (2002). 8 weekly 2 h sessions, led by a clinical psychologist experienced in MBCT. Participants were asked to complete meditations at home. ( <i>n</i> = 17)   | Online self-help course. Participants were invited to complete 7 CBT modules and contact researchers with any questions. ( <i>n</i> = 17)   | 29.6 ± 8.4<br>91%<br>UK                             |
| Beaumont et al. (2016)     | Fire-service personnel referred for therapy due to trauma symptoms.  | Trauma-focussed CBT + CFT with techniques based on Gilbert (2010). Techniques included compassion psychoeducation, imagery, letter writing, etc. 12 weekly 1 or 1.5 h sessions 1-to-1 with BABCP-accredited therapist. ( <i>n</i> = 9)  | Trauma-focussed CBT. 12 weekly 1 or 1.5 h sessions 1-to-1. ( <i>n</i> = 8)  | 42.3<br>29%<br>UK                                   |
| Cornish and Wade (2015)    | Individuals experiencing shame over an offence committed against another person. Assessed in clinical interview, though criteria are unclear.                        | Emotion-focussed therapy, with protocol based on Greenberg (2002), with adaptations centring on self-forgiveness imagery, dialogue and letter writing. Structured into 8 weekly 50 min sessions with a doctoral counselling student. ( <i>n</i> = 12)                                       | Waitlist. ( <i>n</i> = 9)   | 36.0 (17.0)<br>77%<br>USA                           |
| de Bruin et al. (2016)     | Individuals with high self-reported stress, scoring over 1 SD above normative norm on the PSS.   | 5 weeks self-led mindfulness, with a 2-h group orientation session including psychoeducation and meditation. Participants undertook 10–20 min daily practice that followed a weekly plan. Recorded practice in a log, with reminders by text and a weekly phone call. ( <i>n</i> = 27)      | Two control groups following the same pattern as the intervention group.<br>Control 1: biofeedback device used to monitor heart rate variability while practising abdominal breathing.<br>Control 2: exercise regime. ( <i>n</i> = 23)                          | 26.2 ± 5.4<br>73% female<br>Netherlands             |
| Duarte et al. (2017)       | Individuals with binge-eating disorder, assessed by clinical interview.  | Self-led compassion-based intervention, with an orientation session involving self-compassion imagery, meditation and psychoeducation. Participants were provided with audio files and a plan for 4 weeks of self-practice, adapted mainly from Gilbert and Choden (2013). ( <i>n</i> = 11) | Waitlist. Psychological treatment prohibited. ( <i>n</i> = 9)   | 36.9 ± 8.1<br>100%<br>female<br>Portugal            |
| Eisendrath et al. (2016)   | Patients with treatment-resistant depression, assessed by clinical interview. They had to show evidence of 2 or more trials with antidepressants in current episode. | 8 weekly 2.25 h manualised MBCT sessions, with protocol following Segal et al. (2002). Participants were instructed to record details of 45 min of home practice 6 days a week, in a diary. ( <i>n</i> = 87)  | 8 weekly 2.25 h manualised sessions of Health Promotion Program (HEP), including exercise, music therapy and dietary advice. Participants were instructed to record 45 min of home practice 6 days a week, in a diary. ( <i>n</i> = 86)                         | 46.2 ± 12.4<br>76% female<br>USA                    |
| Falsafi (2016)             | Students with depression or anxiety, assessed by self-report screening and clinical interview.   | 8 weekly 1.25 h group mindfulness sessions, including loving-kindness meditation, led by a psychiatric nurse. Prescribed 20 min daily practice, with audio recordings provided. ( <i>n</i> = 21)  | Control 1: 8 weekly 1.25 h group Hatha yoga classes led by a psychiatric nurse (a certified yoga teacher).<br>Participants were prescribed 20 min daily practice, with audio recordings provided. ( <i>n</i> = 23)<br>Control 2: no treatment. ( <i>n</i> = 23) | 21.2<br>87%<br>USA                                  |
|                            |  |   |   | 45.2 ± 9.7  |



Table 1 (continued)

| Study   | Clinical group   | Intervention ( <i>n</i> included in the analysis)  | Control ( <i>n</i> included in the analysis)   | Age ( <i>M</i> ± <i>SD</i> )<br>% female<br>Country |
|---|--|--|--|---|
| Hoffart et al. (2015) [some data from Langkaas et al. 2017] | PTSD patients diagnosed under DSM-IV, referred to an inpatient PTSD program for those not responding to local outpatient care.   | Imagery rescripting (based on Smucker et al. (1996) but adapted to increase self-compassion component) over 10 weekly 1-to-1.5 h sessions with clinical psychologist/ psychiatric nurse. Sessions involved the same techniques as control condition plus compassionate imagery and dialogue. Audio recordings provided for daily practice. ( <i>n</i> = 34)      | In vivo exposure, 10 weekly sessions 1-to-1 for 1.5 h. ( <i>n</i> = 31)  | 58%<br>Norway                                       |
| Hou et al. (2013)   | Caregivers with high perceived stress, scoring above threshold on the Caregiver Strain Index (CSI). Over half had possible depression at baseline, based on CES-D.           | 8 weekly 2 h manualised group MBSR sessions, with protocol based on Kabat-Zinn (1990). Therapists were trained in MBSR by the originator of the program. Participants were prescribed 30–45 min home practice per day guided by CDs. ( <i>n</i> = 70)  | Participants were provided with a self-help booklet containing 8 chapters of health education. ( <i>n</i> = 71)  | 57.5 ± 8.3<br>83% female<br>China                   |
| Huijbers et al. (2015)                                      | Patients in full/partial remission from depression, with a history of 3+ episodes and a current prescription of antidepressants.   | 8 weekly 2.5 h manualised group MBCT sessions, following Segal et al. (2002). Included a day-long meditation retreat and home practice for 1 h a day. Participants had to adhere to their antidepressants. ( <i>n</i> = 33)  | Adherence to a therapeutic dose of antidepressants, with at least one appointment with a study psychiatrist. ( <i>n</i> = 35)  | 51.8 ± 14.2<br>72% female<br>Netherlands            |
| Jazaieri et al. (2012)                                      | Individuals with social anxiety disorder, fulfilling DSM-IV criteria, as assessed by clinical interview.   | Manualised group MBSR, with protocol based on Kabat-Zinn (1990). 8 weekly 2.5 h sessions with experienced MBSR teachers, and a full day meditation retreat. Participants kept a record of weekly mindfulness practice at home. ( <i>n</i> = 24)  | Control 1: exercise regime for 8 weeks. Participants attended an exercise class once a week and did 2 weekly individual gym sessions. ( <i>n</i> = 18)<br>Control 2: untreated group in a second RCT. ( <i>n</i> = 29)   | 32.7 ± 8.7<br>49%<br>USA                            |
| Kelly and Carter (2015)                                     | Individuals with binge-eating disorder, assessed by self-report and clinical interview using DSM-V criteria.   | One CFT session, followed by 3 weeks of self-guided practice. Intervention adapted from Goss (2011). Session involved psychoeducation and self-compassion imagery, self-talk and letter writing. During the 3 weeks of the study, participants were provided with daily online links to self-compassion tasks. ( <i>n</i> = 15)                                  | Control 1: one session on strategies to cope with urge to binge, followed by 3 weeks of self-guided practice. During 3 weeks of study, participants were provided with daily online links to a diary for detailing day's eating urges and the coping strategies used to manage them. ( <i>n</i> = 13)<br>Control 2: waitlist. ( <i>n</i> = 13) | 45 ± 15<br>83%<br>USA                               |
| Kelly et al. (2017)   | Outpatients at eating disorder clinic, assessed by clinical interview. Majority had history of intensive treatment, took psychotropic medication and had comorbid diagnoses. | 12 weekly 1.5 h CFT group sessions with a psychologist and master's level therapist. Protocol was based on Kelly and Leybman (2012), which drew from Gilbert (2010). Intervention included compassionate imagery, thought records, behavioural repertoire, letter writing and psychoeducation. Weekly home practice prescribed. TAU maintained. ( <i>n</i> = 11) | TAU, including psychiatrist and nutritionist appointments and weekly psychotherapy combining CBT/DBT. ( <i>n</i> = 11)   | 31.9 ± 12.2<br>95% female<br>USA                    |
| Key et al. (2017)   | Patients at an anxiety clinic with a principal diagnosis of OCD, assessed by clinical interview. Majority of the sample took psychotropic medication.                        | 8 weekly 2 h manualised group MBCT sessions, with protocol based on Segal et al. (2002). Sessions led by a clinical psychologist. Participants instructed to complete 20–25 min home practice per day using audio recordings. ( <i>n</i> = 18)   | Waitlist. ( <i>n</i> = 18)   | 43.3 ± 14.0<br>47% female<br>Canada                 |
|   |  |  |  | 50.1 ± 11.7   |

**Table 1** (continued)

| Study                  | Clinical group  | Intervention ( <i>n</i> included in the analysis)  | Control ( <i>n</i> included in the analysis)   | Age ( <i>M</i> ± <i>SD</i> )<br>% female<br>Country |
|------------------------|---|--|--|---|
| Kingston et al. (2015) | Cancer patients with self-reported mild anxiety or depression, as indicated by HADS.  | 8 weekly 1.5 h manualised MBCT group sessions, with protocol based on Segal et al. (2002). Sessions led by a registrar and clinical psychologist trained in MBCT. TAU maintained. Participants asked to practice at home. ( <i>n</i> = 8)  | TAU including medical management, psychopharmacological treatment of mild anxiety/depression and supportive counselling. ( <i>n</i> = 8) | 63% female<br>Ireland                               |
| Koszycki et al. (2016) | Individuals with social anxiety disorder, assessed by clinical interview and self-report measures.  | MBSR, with protocol based on Kabat-Zinn (1990), adapted for individuals with SAD. Incorporated self-compassion exercises, based on Brach (2003), and exposure techniques. 12 weekly 2 h group sessions led by a psychologist with formal mindfulness training. Participants kept a log of home practice. ( <i>n</i> = 21)                      | Waitlist, with psychotropic medication allowed, but psychological therapy prohibited. ( <i>n</i> = 18)                                   | 39.8 ± 15.3<br>79% female<br>Canada                 |
| Kuyken et al. (2010)   | Patients in partial/full remission from recurrent depression, with history of 3+ episodes, referred by GP because of interest in discontinuing antidepressants. | Manualised group MBCT, with protocol based on Segal et al. (2002), 8 weekly 2 h sessions led by MBCT therapists with extensive training and supervision, with extra initial 1-to-1 session, and 4 follow-up group sessions during the course of a year. Participants also discontinued antidepressants, with support from GP. ( <i>n</i> = 52) | Maintenance of antidepressants. ( <i>n</i> = 62)   | 49.5 ± 11.3<br>77%<br>UK                            |
| Mann et al. (2016)     | Parents of children 2–6 years old, with depression in full/partial remission and a history of 3+ episodes. Assessed by clinical interview.                      | 8 weekly group manualised MBCT sessions led by a clinical psychologist or MBCT therapist. Based on protocol by Segal et al. (2002) and adapted for parents with the help of parent focus groups. ( <i>n</i> = 19)  | TAU. ( <i>n</i> = 19)  | 36.2 ± 5.1<br>95%<br>UK                             |
| Shahar et al. (2015)   | Individuals screening high in self-criticism on self-report DAS-SCP.  | 7 weekly 1 h sessions of loving-kindness meditation (LKM), led by experienced Vipassana meditation teacher. CDs of guided meditations distributed for home practice. ( <i>n</i> = 14)  | Waitlist control. ( <i>n</i> = 18)   | 30.6 ± 10.6<br>61%<br>Israel                        |
| Van Dam et al. (2014)  | Individuals with mild anxiety or depression, screened on self-report measures (STICSA/CESD-R) over the phone.   | 8 weekly 2 h group mindfulness sessions, with experienced mindfulness instructors, based on a hybrid MBCT/MBSR training, with a 6-h day retreat. Protocol based on Kabat-Zinn (1990), Segal et al. (2002) and other sources. ( <i>n</i> = 21)  | Waitlist. No information on treatment received, but psychotropic medication excluded. ( <i>n</i> = 13)                                   | 40.1 ± 14.4<br>65% female<br>USA                    |
| Yadavaia et al. (2014) | Undergraduates reporting low self-compassion (below normative mean on SCS) and high psychological distress on GHQ.  | 6 h ACT workshop led by clinical psychology doctoral students with experience in ACT. Sessions involved experiential and value-based exercises to explore self-compassion and defuse the self from self-critical thoughts. ( <i>n</i> = 30)  | Waitlist. ( <i>n</i> = 43)   | 20.4 (4.4)<br>74%<br>USA                            |

## Quality Assessment

We assessed the quality of the studies in the review using two systems. First, we used the Cochrane Collaboration's tool for assessing risk of bias in RCTs (Higgins et al. 2011). This is the standard framework used for assessing whether there is low, high or uncertain risk of bias within studies. We checked for bias arising from: the allocation of individuals into groups (selection bias), the blinding of participants and personnel to condition during the intervention (performance bias), blinding during assessment (detection bias), missing data (attrition bias) and selective reporting of results (reporting bias). The above was supplemented by a checklist adapted from Downs and Black (1998) for evaluating randomised and non-randomised studies of healthcare interventions, and informed by the changes made by Cahill et al. (2010) for assessing practice-based research on psychological therapies. The final checklist consisted of 27 items covering four areas: reporting (11 items), external validity

(4 items), internal reliability of measurement and treatment (5 items) and internal reliability of confounding variables/selection bias (7 items). Quality was assessed independently by two researchers, and inter-rater reliability was assessed using Cohen's Kappa statistic.

## Data Analyses

Meta-analysis was carried out in the open-source software environment R (version 3.4.0) using the `compute.es` (Del Re 2013) and `metafor` packages (Viechtbauer 2010). Using the `mes()` function in `compute.es`, we calculated the standardised mean difference effect size for each comparison of a compassion-related intervention with a control condition and the associated sampling variance. For the effect size, the difference in change scores between the intervention group (group 1) and the control group (group 2) was divided by the pooled pre-study standard deviation, as shown in the formula below:

$$\frac{(M_{\text{Group 1, post-study}} - M_{\text{Group 1, pre-study}}) - (M_{\text{Group 2, post-study}} - M_{\text{Group 2, pre-study}})}{\sqrt{((SD_{\text{Group 1, pre-study}})^2 (n_{\text{Group 1}} - 1)) + ((SD_{\text{Group 2, pre-study}})^2 (n_{\text{Group 2}} - 1)) / (N - 2)}}$$

This followed the meta-analysis of Kirby et al. (2017) of compassion-based interventions, and the metric was adjusted as suggested by Hedges and Olkin (1985) to correct for biased estimation in small samples (giving Hedge's  $g$ ).

Some studies compared an intervention group to two different control groups. In these cases, we calculated effect sizes for each comparison of an intervention to a control. To correct for these correlated comparisons (Higgins and Green 2011), we used a multilevel meta-analytic model (Konstantopoulos 2011; Weisz et al. 2013). Using the function `rma.mv()` in the `metafor` package, we ran separate multilevel models with restricted maximum likelihood estimation for self-compassion, depression and anxiety, including `~group|study` as a random term in each model. The summary effects produced by the models were interpreted according to Cohen's (1988) guidelines: Hedge's  $g$  of 0.20 as a small effect, 0.50 as medium and 0.80 as large. We tested whether the effect sizes for self-compassion, depression and anxiety differed in size using a Wald-type test.

The presence of heterogeneity was assessed using the  $Q$ -statistic, which tests whether the sum of weighted squared deviations about the summary effect size is greater than expected by sampling error. This has a  $\chi^2$  distribution under the null hypothesis. Heterogeneity was quantified using the  $I^2$  statistic, calculated as  $(Q - df) / Q$  and expressed as a percentage; 0% indicates no observed heterogeneity, while 25, 50 and 75% indicate low, moderate and high heterogeneity, respectively (Higgins et al. 2003).

As detailed in the aims above, we examined if three characteristics of the studies contributed to heterogeneity: the

study population (clinical or subclinical), the modality of therapy (explicitly compassion-based, i.e. CFT, or another type of intervention) and the kind of control group (active or waitlist/treatment as usual). To assess the importance of these study-level variables, we carried out meta-regressions by adding the three moderators to the multilevel models for self-compassion, depression and anxiety. Variables were dummy-coded such that positive coefficients for population, therapy type and control type meant a greater effect for clinical populations, CFT and studies with an active control, respectively. Where a moderator was significant, we split the data set by that moderator to get effect size estimates within the subgroups.

Publication bias and sensitivity of the meta-analysis to influential cases were tested. Individual effects were identified as potentially influential if they had leverage, defined by a hat value above  $2/n$ , a conservative cut-off (Hoaglin and Kempthorne 1986), or were discrepant, with a standardised residual of  $\pm 3$ . The models were compared with and without any effects that screened positive for leverage or discrepancy. Publication bias is usually investigated by funnel plots. However, traditional funnel plots, plotted with the effect sizes against their standard error, do not provide a reliable assessment of publication bias when effects are nested and when there is significant heterogeneity, and so the residuals of the moderated models, rather than the raw effects, were plotted here instead (Nakagawa and Santos 2012). This has the effect of checking for publication bias when heterogeneity has been accounted for. We ran Egger's test for the asymmetry of the



funnel plot showing the residuals (Egger et al. 1997). In the case of possible publication bias, we ran the trim-and-fill procedure on the residuals of the moderated model to approximate the number of hypothetical unpublished studies ‘missing’ from the data set, and as advised by the originators of the procedure, it was used as a sensitivity analysis rather than an adjustment (Duval and Tweedie 2000).

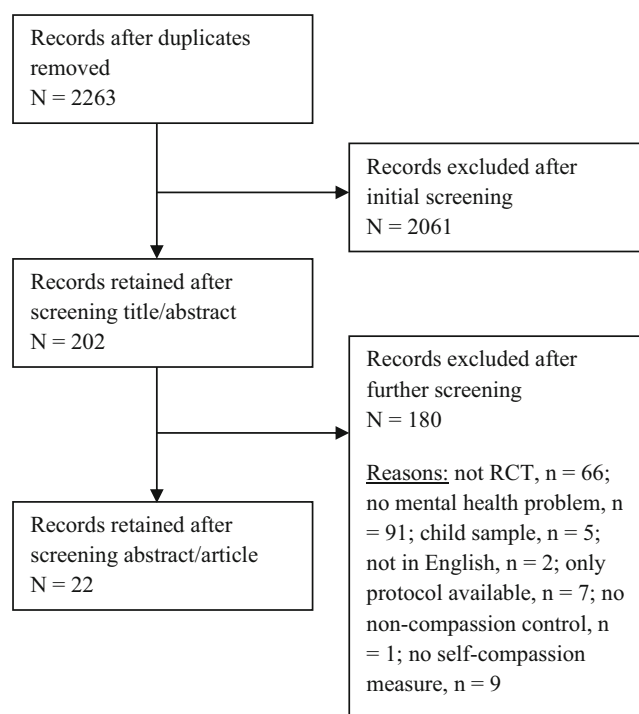
## Results

### Study Selection

See Fig. 1 for details on the selection of papers for the meta-analysis. A total of 22 studies met our inclusion criteria. Just three of these studies were included in the only other meta-analysis of compassion-based interventions (Kirby et al. 2017). One study (Huijbers et al. 2015), despite not reporting self-compassion outcomes, was included because a second study by the same authors (Huijbers et al. 2017) indicated that the SCS was administered in the RCT. We were able to obtain a breakdown of the SCS results from the authors to be included in this meta-analysis.

### Study Characteristics

See Table 1 for a description of all 22 studies. Table 4 in the Appendix presents further details on the studies, including



**Fig. 1** Flowchart showing number of records at each stage of the literature screening

their main outcomes and information on the therapists, treatment adherence and attrition. Of the 22 RCTs included in the review, 13 evaluated mindfulness-based therapies, 1 a day-long ACT workshop and 8 compassion-based interventions (CFT or related compassionate mind/loving-kindness approaches). The literature search did not identify any studies examining the effect of DBT on self-compassion.

Of the 13 mindfulness-based interventions, the majority ( $n = 9$ ) were closely matched in format, following the treatment protocols of either Kabat-Zinn (1990) or Segal et al. (2002), with manualised weekly group sessions typically lasting between 2 and 2.5 h over 8 weeks. The other four mindfulness interventions were more heterogeneous: two were also an 8-week course but with shorter sessions, one was a longer course and one was a self-help intervention with an initial face-to-face orientation session.

The compassion-based interventions ( $n = 8$ ) were more variable in format. Two had relatively minimal therapist contact time: each comprised of one face-to-face orientation session followed by 3 or 4 weeks of guided self-help. Six compassion-focussed interventions followed a more intensive course format, but the weekly sessions were shorter (1 to 1.5 h in duration) and the length of the course was more variable (between 7 and 12 weeks). Also, some had a group format ( $n = 3$ ), whereas others involved one-to-one sessions ( $n = 3$ ).

In 11 of the 22 studies, there was a comparison group engaging in an active control condition. In three of these (Armstrong and Rimes 2016; Hou et al. 2014; Kuyken et al. 2010), the control condition was not closely matched to the intervention in duration of social contact. In 15 studies, the control condition was waitlist or treatment as usual (TAU). In four of these studies (Huijbers et al. 2017; Kelly et al. 2017; Key et al. 2017; Kingston et al. 2015), the control groups provided a high level of comparison with the intervention group, since the participants were under the care of an outpatient clinic with consistent psychotherapy and/or pharmacotherapy. In the other 11 studies, the waitlist/TAU group contained participants with little treatment or no consistent level of treatment. Where treatment adherence was reported, it appeared high, although few studies gave a comprehensive report of adherence. Therapist competence was reported in most studies, and where it was, experienced, qualified mental health professionals delivered the interventions.

Studies included in this review report summary data for a total of 1262 participants at baseline, with individual sample sizes between 16 and 173 (median = 40). Half the studies took place in the USA ( $n = 8$ ) or the UK ( $n = 4$ ), with the remaining studies spread across Canada ( $n = 2$ ), the Netherlands ( $n = 2$ ) and one each in Japan, China, Ireland, Portugal, Norway and Israel. In total, 73.9% of the individuals were female, and mean age was 40.0 years ( $SD = 10.7$ ). Data from 10 studies was based on an intention-to-treat (ITT) sample and 12 on per-protocol (PP) participants. Of the 12 papers with PP results, 4 repeated

the analyses with ITT samples and reported finding equivalent results. Across all studies, post-intervention data was available on 78.8% of participants randomised to a condition; the median number of participants providing post-intervention data was 71.8% (range = 56.3–92.7%) in PP samples and 85.3% (range = 75.6–100%) in ITT samples, indicating higher attrition in PP samples. The clinical characteristics of the included studies were as follows: peri-clinical anxiety/depression ( $n = 4$ ), recurrent depression in full/partial remission ( $n = 3$ ), treatment-resistant depression ( $n = 1$ ), social anxiety disorder ( $n = 2$ ), trauma symptoms/PTSD ( $n = 2$ ), eating disorder ( $n = 3$ ), obsessive-compulsive disorder ( $n = 1$ ), high stress ( $n = 2$ ) and high self-criticism/low self-compassion ( $n = 4$ ). The studies of high stress and high self-criticism/low self-compassion all selected their participants using thresholds on screening measures that might be taken as indicating a risk for developing psychopathology. See Table 1 for the characteristics of the samples.

## Quality Assessment

See Table 2 for the assessment of risk of bias. There was variable risk of bias across studies, with the main problem being performance bias. There was little evidence that the participants in the experimental and control conditions were likely to have similar expectations for treatment gains, as the control groups often

failed to provide a comparable level of treatment to the experimental groups. For instance, a patient is unlikely to have the same expectations of improvement if they are offered a minimal self-help course compared to weekly group therapy. See Tables 6 and 7 in the Appendix for further quality ratings. Inter-rater reliability of the two assessors was high (Kappa = 0.83).

## Effects of Self-Compassion-Related Interventions on Self-Compassion, Depression and Anxiety

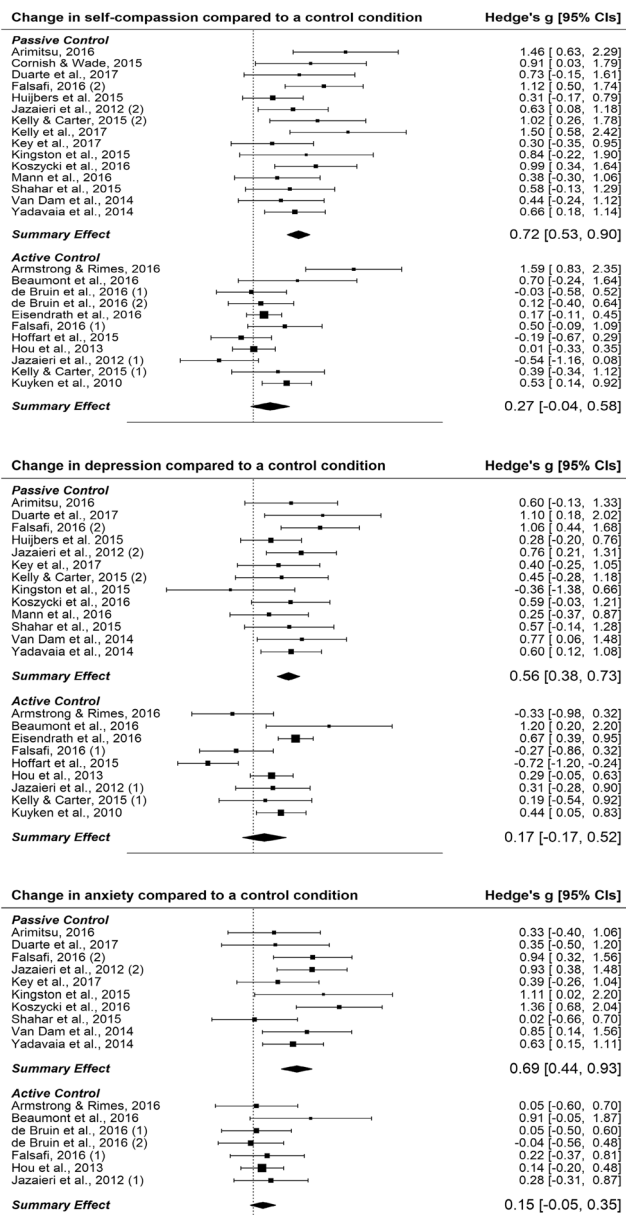
Figure 2 shows forest plots for all three outcomes, with each individual effect size representing a comparison between a self-compassion-related intervention and a control condition.

There were 26 comparisons that measured the self-compassion outcome, covering a total of 1172 individuals. The overall effect was medium-sized effect for greater improvement in self-compassion in the self-compassion intervention compared to the control,  $g = 0.52$ , 95% CIs [0.32, 0.71],  $p < 0.001$ . As can be seen in the forest plot, 19 of the 26 comparisons were at least small-sized, and 15 were medium-sized. Across the studies, heterogeneity was moderate,  $Q(25) = 63.63$ ,  $p < 0.001$ ,  $I^2 = 60.7\%$ .

There were 17 comparisons that measured anxiety, covering a total of 665 individuals. The overall effect was borderline medium for anxiety,  $g = 0.46$ , 95% CIs [0.25, 0.66],  $p < 0.001$ . Heterogeneity was small,  $Q(16) = 28.67$ ,  $p = 0.041$ ,

**Table 2** Assessment of risk of bias across the studies included in the review

|                            | Selection bias | Performance bias | Detection bias | Attrition bias | Reporting bias |
|----------------------------|----------------|------------------|----------------|----------------|----------------|
| Arimitsu (2016)            | Low            | High             | High           | High           | Low            |
| Armstrong and Rimes (2016) | Low            | High             | Low            | High           | Low            |
| Beaumont et al. (2016)     | High           | High             | High           | Low            | Low            |
| Cornish and Wade (2015)    | Low            | High             | Low            | Low            | Low            |
| de Bruin et al. (2016)     | Low            | High             | Low            | High           | Low            |
| Duarte et al. (2017)       | Low            | High             | High           | High           | Low            |
| Eisendrath et al. (2016)   | Low            | High             | Low            | Low            | Low            |
| Falsafi (2016)             | High           | High             | High           | Low            | Low            |
| Hoffart et al. (2015)      | Low            | High             | Low            | Low            | Low            |
| Hou et al. (2013)          | Low            | High             | Low            | Low            | Low            |
| Huijbers et al. (2015)     | High           | High             | High           | Low            | Low            |
| Jazaieri et al. (2012)     | Low            | High             | Low            | High           | Low            |
| Kelly and Carter (2015)    | Low            | High             | Low            | Low            | Low            |
| Kelly et al. (2017)        | Low            | High             | High           | Low            | Low            |
| Key et al. (2017)          | Low            | High             | High           | Low            | Low            |
| Kingston et al. (2015)     | Low            | High             | High           | High           | Low            |
| Koszycki et al. (2016)     | Low            | High             | Low            | Low            | Low            |
| Kuyken et al. (2010)       | Low            | High             | Low            | Low            | Low            |
| Mann et al. (2016)         | Low            | High             | Low            | High           | Low            |
| Shahar et al. (2015)       | Low            | High             | High           | Low            | Low            |
| Van Dam et al. (2014)      | Low            | High             | Low            | High           | Low            |
| Yadavaia et al. (2014)     | Low            | High             | High           | High           | Low            |



**Fig. 2** Forest plots showing effect sizes for the three main outcomes: self-compassion, anxiety and depression. Where authors and year are followed by (1) or (2), this indicates the comparison between the intervention group and either control group 1 or control group 2. See Table 1 for details regarding the conditions

$I^2 = 44.2\%$ . There were 22 comparisons that measured depressive symptoms, covering a total of 1063 individuals. A small to medium effect was found for depressive symptoms,  $g = 0.40$ , 95% CIs [0.23, 0.57],  $p < 0.001$ . There was evidence of moderate heterogeneity,  $Q(21) = 51.09$ ,  $p < 0.001$ ,  $I^2 = 58.9\%$ .

We tested whether the magnitude of the summary effect for self-compassion differed significantly from those for anxiety and depression using Wald-type tests. Both tests were non-significant:  $z = 0.42$ ,  $p = 0.676$ ;  $z = 0.80$ ,  $p = 0.380$ . However, on a study by study level, there was evidence that interventions often varied in their impact on self-compassion and the

psychopathology measures. The average absolute difference between a study's effect size for self-compassion and for depression was 0.45 ( $SD = 0.46$ ), and between self-compassion and anxiety, it was 0.41 ( $SD = 0.41$ ).

For the three meta-analytic models, all standardised residuals were between  $-2.68$  and  $2.10$ , and no hat values were flagged, suggesting that there were no influential outliers.

### Types of Control, Intervention and Population as Possible Moderators of Outcome

Meta-regressions indicated that the type of control (active vs. waitlist/TAU) was the only study-level moderator of outcome. Study population (clinical or subclinical) and type of therapy (explicitly compassion-based, i.e. CFT, or another type of intervention) showed no effects on outcome. In Table 3, the studies are categorised according to the three moderators.

For self-compassion, the omnibus test of the moderators was significant,  $QM(3) = 12.92$ ,  $p = 0.005$ . Residual heterogeneity was also significant,  $QE(22) = 42.05$ ,  $p = 0.006$ , indicating that 47.7% of variability remained unexplained by the model. In the meta-regression for self-compassion, type of control was significant ( $\beta = 0.54$ ,  $SE = 0.16$ ,  $p < 0.001$ ), but type of intervention ( $\beta = 0.20$ ,  $p = 0.350$ ) and population ( $\beta = -0.05$ ,  $p = 0.787$ ) were not. For anxiety, the omnibus test of the moderators was also significant,  $QM(3) = 18.62$ ,  $p < 0.001$ , and a non-significant test for residual heterogeneity indicated that all variability was explained,  $QE(13) = 10.05$ ,  $p = 0.690$ . For anxiety, type of control was also a significant predictor ( $\beta = 0.53$ ,  $SE = 0.16$ ,  $p < 0.001$ ). Neither type of intervention ( $\beta = -0.31$ ,  $p = 0.169$ ) nor population ( $\beta = 0.27$ ,  $p = 0.082$ ) was significant. Finally, the full model for depression was not significant,  $QM(3) = 3.84$ ,  $p = 0.279$ , and type of control closely missed significance, though it did retain a sizeable coefficient, as in the other models,  $\beta = 0.38$ ,  $SE = 0.20$ ,  $p = 0.066$ . Type of intervention ( $\beta = -0.10$ ,  $p = 0.610$ ) and population ( $\beta = 0.16$ ,  $p = 0.378$ ) were non-significant as moderators. Residual heterogeneity was significant,  $QE(18) = 40.34$ ,  $p = 0.002$ , with 55.4% of variability remaining unexplained.

Given the results of the meta-regressions that indicated substantial between-studies differences based on the type of control used, we ran subgroup analysis to extract summary estimates at the subgroup level. For studies with a passive control condition, summary effects were moderate: self-compassion,  $g = 0.72$  [0.53, 0.90],  $p < 0.001$ ; depression,  $g = 0.56$  [0.38, 0.73],  $p < 0.001$ ; anxiety  $g = 0.69$ , [0.44, 0.93],  $p < 0.001$ . For studies with an active control condition, effect sizes were not significant, though self-compassion only marginally missed significance,  $g = 0.27$  [-0.04, 0.58],  $p = 0.092$ . Estimates for the other outcomes were as follows: anxiety,  $g = 0.15$  [-0.05, 0.35],  $p = 0.138$ ; depression,  $g = 0.17$  [-0.17, 0.52],  $p = 0.324$ .

It is worth noting that there was substantial variability in the nature of the passive TAU control groups: they varied from

**Table 3** Studies classified by hypothesised moderators

| Authors (year)             | Intervention type              | Type of control                              | Type of population |
|----------------------------|--------------------------------|--|--------------------|
| Arimitsu (2016)            | CFT/CFT equivalent             | Waitlist/TAU                                 | Subclinical        |
| Armstrong and Rimes (2016) | Mindfulness-based intervention | Active                                       | Subclinical        |
| Beaumont et al. (2016)     | CFT/CFT equivalent             | Active                                       | Clinical           |
| Cornish and Wade (2015)    | CFT/CFT equivalent             | Waitlist/TAU                                 | Subclinical        |
| de Bruin et al. (2016)     | Mindfulness-based intervention | Active                                       | Subclinical        |
| Duarte et al. (2017)       | CFT/CFT equivalent             | Waitlist/TAU                                 | Clinical           |
| Eisendrath et al. (2016)   | Mindfulness-based intervention | Active                                       | Clinical           |
| Falsafi (2016)             | Mindfulness-based intervention | One active control; one waitlist/TAU control | Clinical           |
| Hoffart et al. (2015)      | CFT-CFT equivalent             | Active                                       | Clinical           |
| Hou et al. (2013)          | Mindfulness-based intervention | Active                                       | Subclinical        |
| Huijbers et al. (2015)     | Mindfulness-based intervention | Waitlist/TAU                                 | Subclinical        |
| Jazaieri et al. (2012)     | Mindfulness-based intervention | One active control; one waitlist/TAU control | Clinical           |
| Kelly and Carter (2015)    | CFT/CFT equivalent             | One active control; one waitlist/TAU control | Clinical           |
| Kelly et al. (2017)        | CFT/CFT equivalent             | Waitlist/TAU                                 | Clinical           |
| Key et al. (2017)          | Mindfulness-based intervention | Waitlist/TAU                                 | Clinical           |
| Kingston et al. (2015)     | Mindfulness-based intervention | Waitlist/TAU                                 | Subclinical        |
| Koszycki et al. (2016)     | Mindfulness-based intervention | Waitlist/TAU                                 | Clinical           |
| Kuyken et al. (2010)       | Mindfulness-based intervention | Waitlist/TAU                                 | Subclinical        |
| Mann et al. (2016)         | Mindfulness-based intervention | Waitlist/TAU                                 | Subclinical        |
| Shahar et al. (2015)       | CFT/CFT equivalent             | Waitlist/TAU                                 | Subclinical        |
| Van Dam et al. (2014)      | Mindfulness-based intervention | Waitlist/TAU                                 | Subclinical        |
| Yadavaia et al. (2014)     | ACT                            | Waitlist/TAU                                 | Subclinical        |

having no treatment at all to having ongoing outpatient care. We therefore conducted exploratory analysis beyond our planned moderator analysis. In our last subgroup analysis, we grouped studies with a high-level TAU control together with those with an active control group. In practice, this meant re-categorising four studies where all or most control participants received psychological treatment and/or psychotropic medication in their usual care (Huijbers et al. 2017; Kelly et al. 2017; Key et al. 2017; Kingston et al. 2015) as having active rather than passive controls. Under this subgrouping, estimates for the three outcomes were as follows: self-compassion,  $g = 0.35$  [0.09, 0.62],  $p = 0.010$ ; depression,  $g = 0.16$  [-0.15, 0.47],  $p = 0.302$ ; and anxiety  $g = 0.23$ , [0.00, 0.45],  $p = 0.049$ .

### Effects of Self-Compassion-Related Interventions on Subscales of the SCS

Sixteen studies used the full form of the SCS; the rest used the SCS-SF, which does not allow reliable calculation of subscale scores (Raes et al. 2011). We had access to the breakdown of subscores in 8 studies, either through published data and unpublished data obtained directly from authors, with a total sample of 326 people. We ran a random effects meta-analysis on each scale. Effects were similar across scales: typically, medium in size, though there was a tendency for negative subscales to be

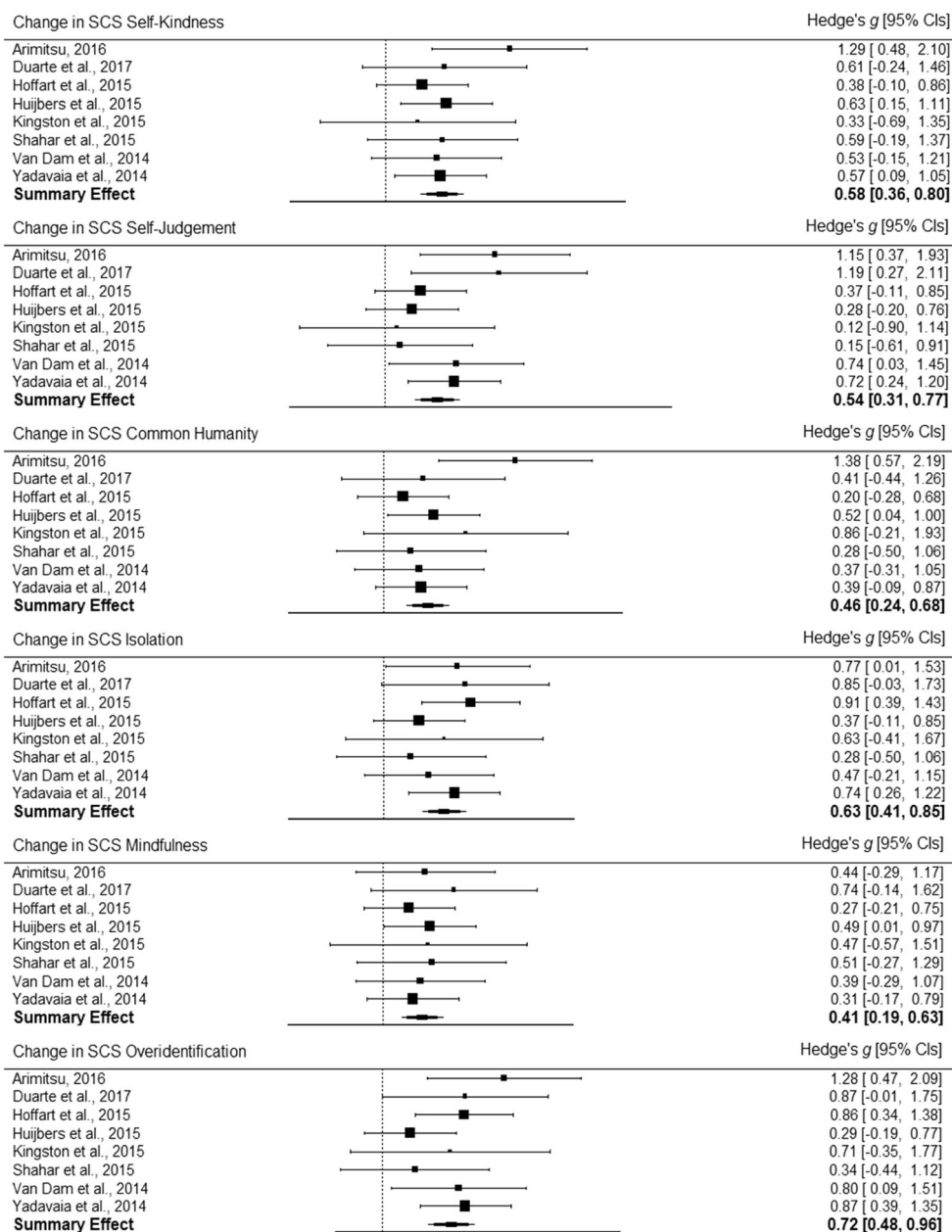
associated with slightly higher effects. Note that all these studies employed passive TAU control groups. Bearing in mind that our moderator analysis above found that studies with active controls were associated with lower effects, it is possible that the following results overestimate the true effect of treatment; nonetheless, these results give a sense of the *relative* effect on different subscales. Summary effects were as follows: self-kindness,  $g = 0.58$  [0.37, 0.80]; self-judgement,  $g = 0.54$  [0.31, 0.77]; common humanity,  $g = 0.46$  [0.24, 0.68]; isolation,  $g = 0.63$  [0.41, 0.85]; mindfulness,  $g = 0.41$  [0.19, 0.63]; and over-identification,  $g = 0.72$  [0.48, 0.96]; all  $ps < 0.001$ . There was no evidence of heterogeneity in any analysis, all  $p$  values  $\geq 0.301$ . See Fig. 3 for forest plots of each SCS subscale.

### Publication Bias

Publication bias was assessed by inspecting funnel plots and performing Egger's regression to test for asymmetry in the plots. Contour-enhanced funnel plots of the observed effects and funnel plots of residuals are shown in Fig. 4 (Appendix). As explained in the "Method," Egger's test was run on the residuals of the models including our study-level moderators. Results for Egger's test were as follows: self-compassion,  $p = 0.136$ ; anxiety,  $p = 0.737$ ; depression,  $p = 0.851$ . Given that  $p = 0.1$  is taken as the threshold for significance in Egger's



**Fig. 3** Forest plots showing effect sizes for the six subscales of the SCS



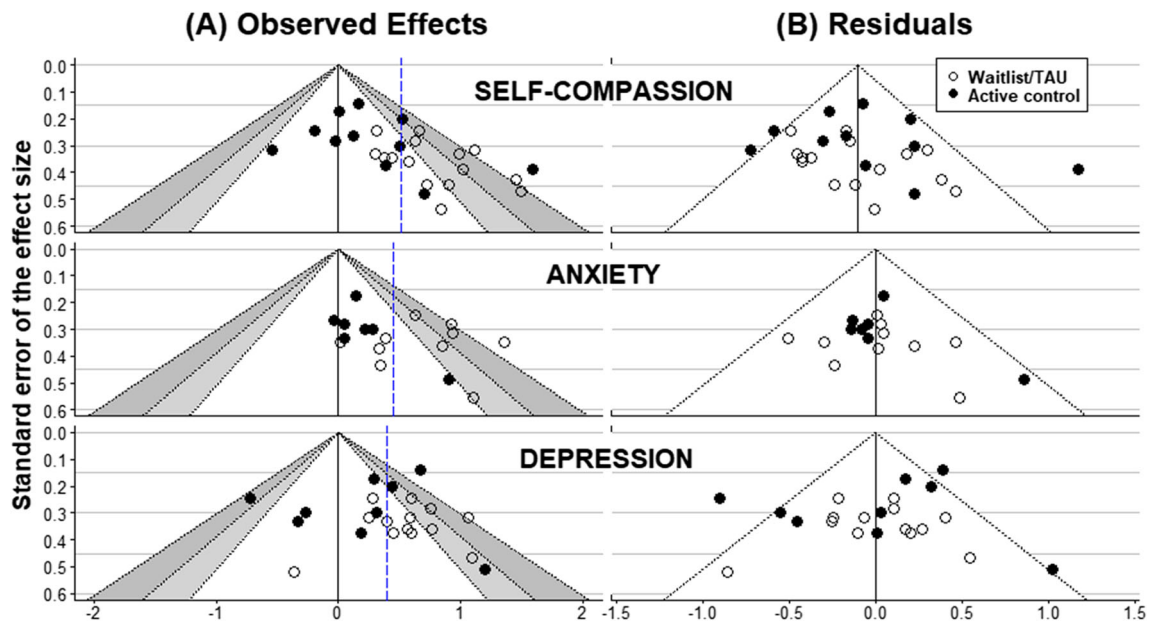
test, we took the borderline result for self-compassion as reason for investigating the sensitivity of the self-compassion effects to publication bias by running the trim-and-fill procedure on the residuals for the moderated model for self-compassion. This indicated that 3 studies were 'missing' from the left of the plot and that adding these would adjust the summary effect slightly,  $\beta = 0.08$ .

## Discussion

This review evaluated the effectiveness of interventions aiming to increase self-compassion among individuals with a mental disorder or a subclinical psychological difficulty. Our results

are somewhat equivocal. On the one hand, we found that self-compassion-related therapies, compared to a control condition, successfully increase self-compassion and reduce levels of depression and anxiety with medium effect sizes. These results indicate that self-compassion is a psychological characteristic that can be modified in therapy, and this is of clinical interest given the relationship between self-compassion and psychopathology (MacBeth and Gumley 2012; Marsh et al. 2018). However, this meta-analysis also found that self-compassion-related therapies did not produce better outcomes than active control conditions. This indicates that such therapies are unlikely to have any specific effect over and above the general benefits of any active treatment. We should therefore be cautious about claiming that it is possible to 'target' self-





**Fig. 4** Funnel plots of observed effects and residuals for all measures. (A) Funnel plots of the observed effects (Hedge's  $g$ ) for individual studies against study precision, represented here by SE of Hedge's  $g$ . Pseudo-confidence regions are shown by the light ( $0.05 < p < 0.01$ ) and dark grey bands ( $0.01 < p < 0.001$ ). Possible publication bias is indicated if there are more studies in these regions than in the white inside the bands, at the bottom of the plots compared to the top (i.e. as a function of study

precision). However, differences may also relate to heterogeneity across studies. In the plots above, effect size and precision are confounded by the type of control, indicating that heterogeneity is a factor. The dotted blue line marks the overall summary effect. (B) Funnel plots showing residuals, with heterogeneity relating to the moderators removed, against the same scale for study precision

compassion in therapy. Instead, it would seem that self-compassion is one of the many psychological characteristics that are modifiable during the course of a range of therapies.

The studies included in this review included participants with a range of clinical and subclinical presentations, and there did not seem to be any evidence suggesting that self-compassion-related interventions were more suited to some presentations compared with others. Our meta-regressions did not find that clinical or subclinical level of presentation moderated the effect size. It must be borne in mind, though, that our analysis likely had insufficient power to detect a small effect. In addition, our review covered a variety of interventions which are all hypothesised as acting, at least partially, by increasing self-compassion. There was no evidence in the meta-regression that the type of intervention moderated outcome, which is consistent with the idea that a range of therapies can modify an individual's level of self-compassion. Nonetheless, the proviso above, regarding power, applies here too.

One question that could not be tackled quantitatively in the review is the question of mediation: do increases in self-compassion mediate improvements in psychopathology? This is an important question, given that increased self-compassion is assumed to be the mechanism of change in self-compassion-related therapies (e.g. Gilbert 2009). While the meta-analysis cannot answer the question, five of the studies included in the review did include some basic analysis of mediation, and we give a narrative synthesis of these findings below. Hoffart et al. (2015) and Kuyken et al. (2010) both found that increased self-

compassion predicted improved psychopathology (PTSD symptoms in the former case, depression in the latter) across their samples, with no differences between the treatment and control groups. In two further studies, change in self-compassion also showed large-sized correlations with the key outcome measures: post-intervention social anxiety-related psychopathology (Koszycki et al. 2016) and change in neuroticism (Armstrong and Rimes 2016). These correlations did not vary between the treatment and control groups. Of the five studies assessing self-compassion as a mediator, only Eisendrath et al. (2016) did not find an effect of change in self-compassion on their primary outcome. The overall consensus across these studies is that increases in self-compassion are related to improvements in psychopathology. However, this relationship is not specific to self-compassion-related therapies; in fact, whenever this association was found in intervention groups, it was also found in control groups. We would therefore need to be sceptical of any suggestion that promoting self-compassion can improve psychopathological symptoms. This calls into question the proposed mechanism of change in self-compassion-related therapies: namely, that self-compassion is the primary target of therapy, with other psychological characteristics changing as a consequence of improvements in self-compassion. Although a sophisticated analysis of mediation would be needed to assess this, the emerging picture is that self-compassion-related therapies do not have a special role to play in promoting self-compassion, either as an end in itself or as a means of influencing other psychological characteristics.

All studies used the SCS (Neff 2003b) or SCS-SF (Raes et al. 2011) to assess self-compassion. The full SCS covers six factors associated with self-compassion. When evaluating the effect of self-compassion-related interventions compared to a control condition on pre-post scores in these subscales, there was significantly greater improvement in all. Interestingly, the negative subscales (self-judgment, isolation and over-identification) showed a trend for greater improvement than the positive subscales (self-kindness, common humanity and mindfulness); in particular, over-identification ( $g = 0.72$ ) and isolation ( $g = 0.63$ ) had the greatest effect sizes. This echoes the results of two other papers included in this review (Kelly and Carter 2015; Kelly et al. 2017) that reported larger effects for the negative compared to the positive items. Collectively, these findings speak to the debate around the psychometric properties of the SCS. On the one hand, the fact that all six subscales showed significant improvements support the validity of the scale, since a self-compassion intervention would be expected to improve scores across the subscales of a self-compassion measure. However, there seemed to be variability in how modifiable different subscales were, meaning that studies only analysing differences in SCS total score may lose clinically relevant information. Williams et al. (2014) suggested researchers avoid using total scores because the scale did not fit a one-factor structure, and our analysis indicates that a total score may not fully reflect the differential psychotherapeutic benefits of the six facets.

Methodologically, the studies included in the review were of reasonable quality. While the earliest review of self-compassion-related therapies concluded that treatment effectiveness was difficult to evaluate given methodological weaknesses in the field (Leaviss and Uttley 2015), we can be more confident in the quality of the RCTs reviewed here, although there was a particular risk of performance bias across the studies. It is unlikely that participants would expect as much improvement or found the condition as credible if they were in the control compared to the treatment group in many of the studies. This comes down to an absence of an active control condition in much research, and even where there was an active control condition, it was not always clear if it was well matched to the intervention condition in terms of social contact. It is important that conditions are matched on social contact in order to control for the significant impact of common factors in psychotherapy (Wampold 2015). The most rigorous test would involve comparing self-compassion-related therapies to gold-standard treatments, like CBT. This would involve evaluating the relative impact on primary mental health outcomes, as well as characterising the role of self-compassion in the therapeutic process. While this research is needed, it is worth noting that many studies included in this review did offer a reasonably high level of comparison, with treatment as usual sometimes including a high level of ongoing psychotherapy and/or pharmacotherapy. A further limitation was that some studies

suffered from quite substantial attrition, often without making any rigorous analysis of any differences between dropouts and completers. Intention-to-treat analyses were not carried out consistently, although favouring per-protocol analyses is understandable given the sometimes low sample sizes and the fledgling status of compassion-related therapies. Longer follow-up periods would also be advisable, given that boosting self-compassion is likely to be a useful approach for buffering against relapsing mental disorders; this can only be assessed if medium-term follow-up is conducted.

In conclusion, this meta-analysis found that self-compassion-related interventions had moderate effects on self-compassion, depression and anxiety outcomes across 22 RCTs. However, when limiting analysis to comparisons between self-compassion-related interventions and *active* control condition, there were no significant differences in outcome. This suggests that self-compassion-related interventions lacked a specific effect when compared to other active treatments. There was no evidence that effects differed between clinical and subclinical populations, nor between therapies with an explicit or implicit aim to boost self-compassion. In the analysis of the subscales of the SCS, there was some variability in how modifiable subscales were, with negative subscales appearing to be more amenable to therapeutic change, supporting the view that collapsing the subscales into one total may risk losing clinically relevant information. Synthesis of research findings indicated that changes in self-compassion were related to changes in psychopathology, although there was no evidence that this relationship was specific to self-compassion-related interventions. Overall, this review provides good evidence that levels of self-compassion can be modified in third-wave self-compassion-related therapies, but does not indicate that these therapies are any better in promoting self-compassion than other active psychological treatments.

**Acknowledgments** The authors would like to thank Mr. Anders Jespersen and Ms. Antonia Klases for their assistance in study screening and quality rating and Ms. Rowena Stewart for her advice on the use of databases.

**Authors' Contributions** Alexander C. Wilson and Kate Mackintosh are joint first authors.

**Funding** This research did not receive any specific grant from funding agencies in the public, commercial or not-for-profit sectors.

## Compliance with Ethical Standards

**Conflict of Interest** The authors declare that they have no conflicts of interest.

**Open Access** This article is distributed under the terms of the Creative Commons Attribution 4.0 International License (<http://creativecommons.org/licenses/by/4.0/>), which permits unrestricted use, distribution, and reproduction in any medium, provided you give appropriate credit to the original author(s) and the source, provide a link to the Creative Commons license, and indicate if changes were made.

## References

- Arimitsu, K. (2016). The effects of a program to enhance self-compassion in Japanese individuals: A randomized controlled pilot study. *The Journal of Positive Psychology, 11*(6), 559–571. <https://doi.org/10.1080/17439760.2016.1152593>.
- Armstrong, L., & Rimes, K. A. (2016). Mindfulness-based cognitive therapy for neuroticism (stress vulnerability): a pilot randomized study. *Behavior Therapy, 47*, 287–298. <https://doi.org/10.1016/j.beth.2015.12.005>.
- Beaumont, E., Durkin, M., McAndrew, S., & Martin, C. R. (2016). Using compassion focused therapy as an adjunct to trauma-focused CBT for fire service personnel suffering with trauma-related symptoms. *The Cognitive Behaviour Therapist, 9*, e34. <https://doi.org/10.1017/S1754470X16000209>.
- Cahill, J., Barkham, M., & Stiles, W. B. (2010). Systematic review of practice-based research on psychological therapies in routine clinic settings. *British Journal of Clinical Psychology, 49*, 421–453. <https://doi.org/10.1348/014466509X470789>.
- Centre for Reviews and Dissemination. (2009). *Systematic reviews: CRD's guidance for undertaking reviews in healthcare*. York: York Publishing Services URL: <https://www.york.ac.uk/crd/guidance>.
- Clark, L. A., Watson, D., & Mineka, S. (1994). Temperament, personality, and the mood and anxiety disorders. *Journal of Abnormal Psychology, 103*, 103–116. <https://doi.org/10.1037/0021-843X.103.1.103>.
- Cohen, J. (1988). *Statistical power analysis for the behavioral sciences* (2nd ed.). Hillsdale: Erlbaum Associates.
- Collett, N., Pugh, K., Waite, F., & Freeman, D. (2016). Negative cognitions about the self in patients with persecutory delusions: an empirical study of self-compassion, self-stigma, schematic beliefs, self-esteem, fear of madness, and suicidal ideation. *Psychiatry Research, 239*, 79–84. <https://doi.org/10.1016/j.psychres.2016.02.043>.
- Cornish, M. A., & Wade, N. G. (2015). Working through past wrongdoing: examination of a self-forgiveness counselling intervention. *Journal of Counselling Psychology, 62*, 521–528. <https://doi.org/10.1037/cou0000080>.
- de Bruin, E. I., van der Zwan, J. E., & Bögels, S. M. (2016). A RCT comparing daily mindfulness meditations, biofeedback exercises, and daily physical exercise on attention control, executive functioning, mindful awareness, self-compassion, and worrying in stressed young adults. *Mindfulness, 7*, 1182–1192. <https://doi.org/10.1007/s12671-016-0561-5>.
- Del Re, A. C. (2013). Compute.es: compute effect sizes. R package version 0.2-2. URL: <http://cran.r-project.org/web/packages/compute.es>.
- Downs, S. H., & Black, N. (1998). The feasibility of creating a checklist for the assessment of the methodological quality both of randomised and non-randomised studies of health care interventions. *Journal of Epidemiology and Community Health, 52*, 377–384. <https://doi.org/10.1136/jech.52.6.377>.
- Duarte, C., Pinto-Gouveia, J., & Stubbs, R. J. (2017). Compassionate attention and regulation of eating behaviour: a pilot study of a brief low-intensity intervention for binge eating. *Clinical Psychology & Psychotherapy, 24*, 1437–1447. <https://doi.org/10.1002/cpp.2094>.
- Dudley, J., Eames, C., Mulligan, J., & Fisher, N. (2018). Mindfulness of voices, self-compassion, and secure attachment in relation to the experience of hearing voices. *British Journal of Clinical Psychology, 57*, 1–17. <https://doi.org/10.1111/bjc.12153>.
- Duval, S., & Tweedie, R. (2000). Trim and fill: a simple funnel-plot-based method of testing and adjusting for publication bias in meta-analysis. *Biometrics, 56*, 455–463. <https://doi.org/10.1111/j.0006-341X.2000.00455.x>.
- Egger, M., Smith, G. D., Schneider, M., & Minder, C. (1997). Bias in meta-analysis detected by a simple, graphical test. *BMJ, 315*, 629–634. <https://doi.org/10.1136/bmj.315.7109.629>.
- Eisendrath, S. J., Gillung, E., Delucchi, K. L., Segal, Z. V., Nelson, J. C., McInnes, L. A., ... & Feldman, M. D. (2016). A randomized controlled trial of mindfulness-based cognitive therapy for treatment-resistant depression. *Psychotherapy and Psychosomatics, 85*, 99–110. doi: <https://doi.org/10.1159/000442260>
- Falsafi, N. (2016). A randomized controlled trial of mindfulness versus yoga: effects on depression and/or anxiety in college students. *Journal of the American Psychiatric Nurses Association, 22*, 483–497. <https://doi.org/10.1177/1078390316663307>.
- Ferreira, C., Pinto-Gouveia, J., & Duarte, C. (2013). Self-compassion in the face of shame and body image dissatisfaction: implications for eating disorders. *Eating Behaviors, 14*, 207–210. <https://doi.org/10.1016/j.eatbeh.2013.01.005>.
- Gilbert, P. (2009). Introducing compassion-focused therapy. *Advances in Psychiatric Treatment, 15*, 199–208. <https://doi.org/10.1192/apt.bp.107.005264>.
- Gilbert, P., & Proctor, S. (2006). Compassionate mind training for people with high shame and self-criticism: overview and pilot study of a group therapy approach. *Clinical Psychology & Psychotherapy, 13*, 353–379. <https://doi.org/10.1002/cpp.507>.
- Gu, J., Strauss, C., Bond, R., & Cavanagh, K. (2015). How do mindfulness-based cognitive therapy and mindfulness-based stress reduction improve mental health and wellbeing? A systematic review and meta-analysis of mediation studies. *Clinical Psychology Review, 37*, 1–12. <https://doi.org/10.1016/j.cpr.2015.01.006>.
- Hedges, L. V., & Olkin, I. (1985). *Statistical methods for meta-analysis*. San Diego: Academic.
- Higgins, J. P. T. & Green, S. (2011). *Cochrane handbook for systematic reviews of interventions* version 5.1.0. The Cochrane Collaboration. URL: <http://training.cochrane.org/handbook>.
- Higgins, J. P. T., Thompson, S. G., Deeks, J. J., & Altman, D. G. (2003). Measuring inconsistency in meta-analyses. *BMJ, 327*, 557–560. <https://doi.org/10.1136/bmj.327.7414.557>.
- Higgins, J. P. T., Altman, D. G., Gøtzsche, P. C., Jüni, P., Moher, D., Oxman, A. D., et al. (2011). The Cochrane Collaboration's tool for assessing risk of bias in randomised trials. *BMJ, 343*, d5928. <https://doi.org/10.1136/bmj.d5928>.
- Hoaglin, D. C., & Kempthorne, P. J. (1986). Influential observations, high leverage points, and outliers in linear regression: comment. *Statistical Science, 1*, 408–412. <https://doi.org/10.1214/ss/1177013627>.
- Hoffart, A., Øktedalen, T., & Langkaas, T. F. (2015). Self-compassion influences PTSD symptoms in the process of change in trauma-focused cognitive-behavioral therapies: a study of within-person processes. *Frontiers in Psychology, 6*, 1273. <https://doi.org/10.3389/fpsyg.2015.01273>.
- Hou, R. J., Wong, S. Y-S, Yip, B. H-K., Hung, A. T. F., Lo, H. H-M., Chan, P. H. S., et al. (2013). The effects of mindfulness-based stress reduction program on the mental health of family caregivers: a randomized controlled trial. *Psychotherapy and Psychosomatics, 83*(1), 45–53. <https://doi.org/10.1159/000353278>.
- Hou, R. J., Wong, S. Y., Yip, B. H., Hung, A. T., Lo, H. H., Chan, P. H., ... & Ma, S. H. (2014). The effects of mindfulness-based stress reduction program on the mental health of family caregivers: a randomized controlled trial. *Psychotherapy and Psychosomatics, 83*, 45–53. doi: <https://doi.org/10.1159/000353278>.
- Huijbers, M. J., Spinhoven, P., Spijker, J., Ruhé, H. G., van Schaik, D. J. F., van Oppen, P., et al. (2015). Adding mindfulness-based cognitive therapy to maintenance antidepressant medication for prevention of relapse/recurrence in major depressive disorder: randomised controlled trial. *Journal of Affective Disorders, 187*, 54–61. <https://doi.org/10.1016/j.jad.2015.08.0230165-0327>.
- Huijbers, M. J., Crane, R. S., Kuyken, W., Hejke, L., van den Hout, I., Donders, A. R. T., & Speckens, A. E. M. (2017). Teacher competence in mindfulness-based cognitive therapy for depression and its



- relation to treatment outcome. *Mindfulness*, 8, 960–972. <https://doi.org/10.1007/s12671-016-0672-z>.
- Jazaieri, H., Goldin, P. R., Werner, K., Ziv, M., & Gross, J. J. (2012). A randomized trial of MBSR versus aerobic exercise for social anxiety disorder. *Journal of Clinical Psychology*, 68, 715–731. <https://doi.org/10.1002/jclp.21863>.
- Kabat-Zinn, J. (1990). *Full catastrophe living: using the wisdom of your body and mind to face stress, pain, and illness*. New York: Delta.
- Kelly, A. C., & Leybman, M. J. (2012). *Calming your eating disorder voice with compassion*. Unpublished manual.
- Kelly, A. C., & Carter, J. C. (2015). Self-compassion training for binge eating disorder: a pilot randomized controlled trial. *Psychology and Psychotherapy: Theory, Research and Practice*, 88, 285–303. <https://doi.org/10.1111/papt.12044>.
- Kelly, A. C., Wisniewski, L., Martin-Wagar, C., & Hoffman, E. (2017). Group-based compassion-focused therapy as an adjunct to outpatient treatment for eating disorders: a pilot randomized controlled trial. *Clinical Psychology & Psychotherapy*, 24, 475–487. <https://doi.org/10.1002/cpp.2018>.
- Key, B. L., Rowa, K., Bieling, P., McCabe, R., & Pawluk, E. J. (2017). Mindfulness-based cognitive therapy as an augmentation treatment for obsessive-compulsive disorder. *Clinical Psychology & Psychotherapy*, 24, 1109–1120. <https://doi.org/10.1002/cpp.2076>.
- Kingston, T., Collier, S., Hevey, D., McCormick, M. M., Besani, C., Cooney, J., & O'Dwyer, A. M. (2015). Mindfulness-based cognitive therapy for psycho-oncology patients: an exploratory study. *Irish Journal of Psychological Medicine*, 32, 265–274. <https://doi.org/10.1017/ipm.2014.81>.
- Kirby, J. N., Tellegen, C. L., & Steindl, S. R. (2017). A meta-analysis of compassion-based interventions: current state of knowledge and future directions. *Behavior Therapy*, 48, 778–792. <https://doi.org/10.1016/j.beth.2017.06.003>.
- Konstantopoulos, S. (2011). Fixed effects and variance components estimation in three-level meta-analysis. *Research Synthesis Methods*, 2, 61–76. <https://doi.org/10.1002/jrsm.35>.
- Koszycki, D., Thake, J., Mavounza, C., Daoust, J. P., Taljaard, M., & Bradwejn, J. (2016). Preliminary investigation of a mindfulness-based intervention for social anxiety disorder that integrates compassion meditation and mindful exposure. *The Journal of Alternative and Complementary Medicine*, 22, 363–374. <https://doi.org/10.1089/acm.2015.0108>.
- Kuyken, W., Watkins, E., Holden, E., White, K., Taylor, R. S., Byford, S., ... & Dalgleish, T. (2010). How does mindfulness-based cognitive therapy work? *Behaviour Research and Therapy*, 48, 1105–1112. doi: <https://doi.org/10.1016/j.brat.2010.08.003>
- Langaas, T. F., Hoffart, A., Økstedalen, T., Ulvenes, P. G., Hembree, E. A., & Smucker, M. (2017). Exposure and non-fear emotions: a randomized controlled study of exposure-based and rescripting-based imagery in PTSD treatment. *Behaviour Research and Therapy*, 97, 33–42. <https://doi.org/10.1016/j.brat.2017.06.007>.
- Leaviss, J., & Uttley, L. (2015). Psychotherapeutic benefits of compassion-focused therapy: an early systematic review. *Psychological Medicine*, 45(5), 927–945. <https://doi.org/10.1017/S0033291714002141>.
- Linehan, M. M. (1993). *Skills training manual for treating borderline personality disorder*. New York: Guilford.
- MacBeth, A., & Gumley, A. (2012). Exploring compassion: a meta-analysis of the association between self-compassion and psychopathology. *Clinical Psychology Review*, 32, 545–552. <https://doi.org/10.1016/j.cpr.2012.06.003>.
- Mackintosh, K. (2016). The effectiveness of compassion-focused and mindfulness-based psychological interventions in improving self-compassion in clinical populations. PROSPERO: International prospective register of systematic reviews. URL: [http://www.crd.york.ac.uk/PROSPERO/display\\_record.asp?ID=CRD42016033532](http://www.crd.york.ac.uk/PROSPERO/display_record.asp?ID=CRD42016033532).
- Mann, J., Kuyken, W., O'Mahen, H., Ukoumunne, O. C., Evans, A., & Ford, T. (2016). Manual development and pilot randomised controlled trial of mindfulness-based cognitive therapy versus usual care for parents with a history of depression. *Mindfulness*, 7, 1024–1033. <https://doi.org/10.1007/s12671-016-0543-7>.
- Marsh, I. C., Chan, S. W. Y., & MacBeth, A. (2018). Self-compassion and psychological distress in adolescents—a meta-analysis. *Mindfulness*, 9, 1011–1027. <https://doi.org/10.1007/s12671-017-0850-7>.
- Muris, P., & Petrocchi, N. (2017). Protection or vulnerability? A meta-analysis of the relations between the positive and negative components of self-compassion and psychopathology. *Clinical Psychology & Psychotherapy*, 24, 373–383. <https://doi.org/10.1002/cpp.2005>.
- Nakagawa, S., & Santos, E. S. (2012). Methodological issues and advances in biological meta-analysis. *Evolutionary Ecology*, 26, 1253–1274. <https://doi.org/10.1007/s10682-012-9555-5>.
- Neff, K. D. (2003a). Self-compassion: an alternative conceptualization of a healthy attitude toward oneself. *Self and Identity*, 2, 85–101. <https://doi.org/10.1080/15298860309032>.
- Neff, K. D. (2003b). The development and validation of a scale to measure self-compassion. *Self and Identity*, 2, 223–250. <https://doi.org/10.1080/15298860309027>.
- Neff, K. D. (2016). The Self-Compassion Scale is a valid and theoretically coherent measure of self-compassion. *Mindfulness*, 7, 264–274. <https://doi.org/10.1007/s12671-015-0479-3>.
- Neff, K. D., & Germer, C. K. (2013). A pilot study and randomized controlled trial of the Mindful Self-Compassion program. *Journal of Clinical Psychology*, 69, 28–44. <https://doi.org/10.1002/jclp.21923>.
- Neff, K. D., & Tirsch, D. (2013). Self-compassion and ACT. In T. B. Kashdan & J. Ciarrochi (Eds.), *Mindfulness, acceptance, and positive psychology: the seven foundations of well-being* (pp. 79–107). Oakland: Context Press/New Harbinger Publications.
- Newby, J. M., McKinnon, A., Kuyken, W., Gilbody, S., & Dalgleish, T. (2015). Systematic review and meta-analysis of transdiagnostic psychological treatments for anxiety and depressive disorders in adulthood. *Clinical Psychology Review*, 40, 91–110. <https://doi.org/10.1016/j.cpr.2015.06.002>.
- Raes, F., Pommier, E., Neff, K. D., & Van Gucht, D. (2011). Construction and factorial validation of a short form of the Self-Compassion Scale. *Clinical Psychology & Psychotherapy*, 18(3), 250–255. <https://doi.org/10.1002/cpp.702>.
- Schanche, E., Stiles, T., McCullough, L., Svartberg, M., & Nielsen, G. (2011). The relationship between activating affects, inhibitory affects, and self-compassion in psychotherapy patients with Cluster C personality disorders. *Psychotherapy*, 48, 293–303. <https://doi.org/10.1037/a0022012>.
- Segal, Z. V., Williams, J. M. G., & Teasdale, J. D. (2002). *Mindfulness-based cognitive therapy for depression*. New York: Guilford.
- Segal, Z. V., Williams, J. M. G., & Teasdale, J. D. (2013). *Mindfulness-based cognitive therapy for depression* (2nd ed.). New York: Guilford.
- Shahar, B., Szepsenwol, O., Zilcha-Mano, S., Haim, N., Zamir, O., Levi-Yeshuvi, S., & Levit-Binnun, N. (2015). A wait-list randomized controlled trial of loving-kindness meditation programme for self-criticism. *Clinical Psychology & Psychotherapy*, 22, 346–356. <https://doi.org/10.1002/cpp.1893>.
- Van Dam, N. T., Hobkirk, A. L., Sheppard, S. C., Aviles-Andrews, R., & Earleywine, M. (2014). How does mindfulness reduce anxiety, depression, and stress? An exploratory examination of change processes in wait-list controlled mindfulness meditation training. *Mindfulness*, 5, 574–588. <https://doi.org/10.1007/s12671-013-0229-3>.
- Viechtbauer, W. (2010). Conducting meta-analyses in R with the metafor package. *Journal of Statistical Software*, 36(3), 1–48 URL: <http://www.jstatsoft.org/v36/i03/>.
- Wampold, B. E. (2015). How important are the common factors in psychotherapy? An update. *World Psychiatry*, 14, 270–277. <https://doi.org/10.1002/wps.20238>.

- Weisz, J. R., Kuppens, S., Eckshtain, D., Ugueto, A. M., Hawley, K. M., & Jensen-Doss, A. (2013). Performance of evidence-based youth psychotherapies compared with usual clinical care: a multilevel meta-analysis. *JAMA Psychiatry*, *70*, 750–761. <https://doi.org/10.1001/jamapsychiatry.2013.1176>.
- Williams, M. J., Dalglish, T., Karl, A., & Kuyken, W. (2014). Examining the factor structures of the five facet mindfulness questionnaire and the self-compassion scale. *Psychological Assessment*, *26*, 407–418. <https://doi.org/10.1037/a0035566>.
- Yadavaia, J. E., Hayes, S. C., & Vildaraga, R. (2014). Using acceptance and commitment therapy to increase self-compassion: a randomized controlled trial. *Journal of Contextual Behavioral Science*, *3*, 248–257. <https://doi.org/10.1016/j.jcbs.2014.09.002>.
- Zessin, U., Dickhauser, O., & Garbade, S. (2015). The relationship between self-compassion and well-being: a meta-analysis. *Applied Psychology: Health and Well-Being*, *7*, 340–362. <https://doi.org/10.1111/aphw.12051>.