

# Reconciling the long-term relationship between reservoir pore pressure depletion and compaction in the Groningen region

Jonathan D. Smith<sup>1</sup>, Jean-Philippe Avouac<sup>2</sup>, Robert S. White<sup>1</sup>, Alex Copley<sup>1</sup>, Adriano Gualandi<sup>2,3</sup> and Stephen Bourne<sup>4</sup>

---

Corresponding author: Jonathan Smith, Department of Earth Sciences , University of Cambridge, United Kingdom. (jds70@cam.ac.uk)

<sup>1</sup>Department of Earth Sciences,  
University of Cambridge, United Kingdom.

<sup>2</sup>Department of Geological and Planetary  
Sciences, California Institute of Technology,  
Pasadena, California, USA.

<sup>3</sup>Jet Propulsion Laboratory, California  
Institute of Technology, Pasadena,  
California, USA.

<sup>4</sup>Shell Global Solutions International,  
Amsterdam, The Netherlands

**Abstract.**

The Groningen gas reservoir, situated in the north-east of the Netherlands is western Europe's largest gas reservoir. Due to gas production measurable subsidence and seismicity has been detected across this region, attributed to the deformations induced by reservoir pore pressure depletion. We investigate the surface displacement history using a Principal Component Analysis-based Inversion Method (PCA-IM) to combine a diverse set of Optical Levelling, InSAR and GPS data to better constrain reservoir compaction and subsidence history. The generated compaction model is then used in combination with prior pressure depletion models to determine a reservoir uniaxial compressibility. The best fitting model of uniaxial compressibility is time-independent but spatially variable. The absence of evidence for any significant time-delay between changes in depletion and compaction rates supports an instantaneous poroelastic reservoir response. The absence of non-linear yielding at the largest compaction strains suggests anelastic deformations are a minor part of reservoir compaction.

## 1. Introduction

The Groningen gas field, situated in the north-east of the Netherlands (Figure 1) has been in production since 1963, with 70% of the estimated 2800 billion cubic meters of gas now extracted (e.g. *Bourne et al.* [2014]). Prior to gas extraction the region was considered naturally aseismic with no recorded historical events. However, since the 1990s small magnitude earthquakes have been detected, with these shallow events causing non-structural building damage and public concern [*Dost et al.*, 2012]. The last decade has shown an increase in both the mean frequency and the magnitude of earthquakes. On 17th January 2014 gas production of the Groningen field was limited to 42 bcm (billion cubic meters) per year, in response to the increasing frequency and magnitude of seismicity across the region. This reduction was achieved through reduced extraction from the northern gas extraction sites, in the Loppersum area (Figure 1). In 2015, the reservoir extraction rate dropped further to 27.5 bcm per year [*van Thienen-Visser and Fokker*, 2017].

The seismicity is thought to be due to strain induced by the decrease of the bulk reservoir volume [*Bourne et al.*, 2015; *Nederlandse Aardolie Maatschappij*, 2016; *Dempsey and Suckale*, 2017] but the details of the underlying mechanisms remain poorly understood [*Spiers et al.*, 2017]. Progressive fluid extraction from this reservoir has led to a documented decrease in reservoir pore fluid pressure by 25 MPa as of 2017 [*Bourne and Oates*, 2017]. The resulting increase in the effective vertical stress must have driven compaction of the reservoir, due to the combination of linear poroelasticity [*Wang*, 2000] or

to anelastic compaction [*Schneider et al.*, 1996], leading to surface deformation (Figure 1).

An improved understanding of the geomechanical properties of the reservoir would help reconcile the compaction response to changing pressure depletion. For a purely poroelastic medium, the elastic deformation of the porous material is coupled to fluid flow, as described by Biot's theory of a porous elastic medium saturated with a compressible fluid. In that case, strain at any point within the reservoir is linearly proportional to the local pressure change. In contrast, in the case of an anelastic response of the reservoir, strain at any point within the reservoir would depend on the entire time-evolution of the reservoir pressure depletion, and would result in a non-linear relationship between compaction and pressure change. This formulation would be sensitive to the entire time-evolution of the reservoir pressure depletion, with an inferred time-decay response to reservoir pressure depletion. One way to assess the reservoir properties is to measure surface deformation and model how it relates to pressure variations in the reservoir. The objective of this study is to measure the evolution of reservoir compaction in response to reservoir pore pressures decreasing over the last 50 years, taking advantage of the wealth of data now available which are documented in the surface deformation.

## 2. Geological Setting

The Groningen field is situated in the Groningen structural high, formed during the late Kimmerian tectonic phase. The subsurface is well known from various geophysical investigations (seismic reflection and seismic refraction), borehole core samples and borehole logging (Figure 2). The reservoir levels are located within the Upper Rotliegend



Group, at depths between 2.6-3.2 km, with thickness varying from 100-300 m. The Upper Rotliegend comprises the Slochteren sandstone and Ten Boer claystone formation. The gas has migrated from its source in the highly faulted underlying Pennsylvanian Carboniferous limestone containing coal layers (Figure 2a). The overlying thick and impermeable evaporite and anhydrite layers of the Permian Zechstein group provide the seal for the reservoir. This caprock formation comprises a laterally discontinuous 50 m thick basal anhydrite and 0.2-1 km thick evaporite deposit with an internal disconnected anhydrite layer of 50 m thickness. Seismic reflection, seismic refraction, sonic log and well core samples have been combined to produce a 3D-elastic model of the Groningen region [*Nederlandse Aardolie Maatschappij*, 2013], with knowledge of the reservoir depth and thickness determined from this model. A cross-section of the P-wave velocity model, and a cartoon representation of the separate lithologies is shown in Figures 2a and 2b.

### 3. Geodetic Data

Surface deformation monitoring in the Groningen region commenced in 1964 with optical leveling, providing measurements of relative height differences between reference benchmarks, with repeated measurements taken every 1-8 years. Since 1992, surface deformation monitoring has been expanded to incorporate Interferometric Synthetic Aperture Radar (InSAR) measurements, measurements along line-of-sight (LOS). This data has been processed by Skygeo (<http://www.skygeo.com/>) and *Ketelaar et al.* [2006], for the selection of coherent persistent scatter points; they have modeled and removed atmospheric signals (Supplementary Material 1.2 discusses this further). To expand further the temporal resolution of surface deformation, continuous Global Positioning System

(cGPS) stations were deployed by Nederlandse Aardolie Maatschappij (NAM) [*Nederlandse Aardolie Maatschappij*, 2013] starting in March 2013, allowing us to measure a three-dimensional displacement vector time series. This network was gradually expanded to include 13 stations by April 2014. The temporal span and sampling of each of these techniques is shown in Figure 3.

### 3.1. Optical Leveling

Optical leveling is a surveying technique that provides measurements of height differences between reference benchmarks. We use the data provided by NAM for the period spanning 1964 to 2013, in its raw format (without any processing such as outlier rejections [*Nederlandse Aardolie Maatschappij*, 2016]). The array geometry of the network benchmarks changes significantly across the period. The initial campaign in 1964 was restricted to sparse coverage of the central and southern portion of the Groningen field, with further densification of the array in 1972 and 1987 covering the entire region (Supplementary Figure S1).

We chose a reference benchmark external to the zone of induced subsidence. The data was spatially differenced relative to a benchmark at Rijksdriehoekskoördinaten coordinate RD-Easting=249080 and RD-Northing=554740, about 10 km south of the gas field. This benchmark is external to the deforming region and its measured elevation is stable for the study period. Error analysis of the optical leveling data is still poorly constrained, with no independent measure of error given between each benchmark. The information regarding the acquisition pathways is not available, which limits our ability to determine

the data uncertainties. We therefore assumed a standard uncertainty on each benchmark of 1 cm, the minimum expected uncertainty for the data acquisition between benchmarks [*Nederlandse Aardolie Maatschappij*, 2013]

### 3.2. PS-InSAR

Persistent scatter Interferometric synthetic aperture radar (PS-InSAR, *Ferretti et al.* [2001]) is a technique that constrains motion between subsequent synthetic aperture radar (SAR) acquisitions of high coherence, persistent scatterers. This technique measures the component of motion along the line-of-sight of the satellite, expanding on the only vertical deformation of optical leveling.

The Groningen region has been monitored by radar-acquisitions since the first acquisition of European Remote Sensing 1 (ERS-1) in 1992. The first study using such data used satellite acquisitions of ERS-1 and Envisat [*Ketelaar et al.*, 2006]. These measurements were validated through comparison with optical leveling acquisitions [*Nederlandse Aardolie Maatschappij*, 2016]. Since 2009, the InSAR datasets have been augmented substantially by the acquisition of RADARSAT-2 and TerraSAR-X data. The available SAR data have been processed systematically by SkyGeo (<http://www.skygeo.com/>). Here we use all the InSAR data available except for the sparse ERS measurements prior to 2004, due to their poor temporal coverage and coherence.

Since the PS-InSAR data represent surface displacements for different persistent scatterers for each radar track, some common datum must be chosen to combine the individual

InSAR tracks. In addition, the large persistent scatterer (PS) numbers in this region mean that processing is computationally expensive, without any additional information gained from the large dataset due to the smooth pattern of ground deformation. A quadtree decomposition, a method that subdivides the signal depending on the variance of the signal, is often adopted. However, this method is independent for each satellite track and does not use a common grid between individual tracks. Instead, for an initial outlier rejection method each PS-InSAR dataset is decomposed onto a common regularised grid at 300 m spacing, with line-of-sight (LOS) displacements determined as the median value, and grid-cell weighting determined by the global variance of the InSAR measurements scaled by the number of persistent scatterer points for each grid cell. This gridding effect on the RADARSAT-2 can be seen in Supplementary Figure S4; where Supplementary Figure S4a represents the persistent scatterer deformation across the period 2009-2017, Supplementary Figure S4b represents the gridded deformation across the period 2009-2017, and Figure S4c represents the gridded normalised weighting for each of the grid cells. This method creates a deformation signal consistent with that of the raw data.

We used the PS-inSAR results from SkyGeo, who provided filtered time series of line-of-sight measurements for each of the observed scatterers corrected for tropospheric effects using two different atmospheric models. We consider the time series obtained with these two corrections as well as the uncorrected time series. The two atmospheric corrections supplied are a normal atmospheric model based on linear, polynomial and sinusoidal fitting of the InSAR observations removing any residuals; and an atmospheric estimation

made using a 90-day Gaussian filter.

### 3.3. Continuous Global Position System (cGPS)

Deployment of a continuous Global Positioning System (cGPS) network started with 1 station in March 2013, and acquisition from two prior stations, with expansion to 13 stations by April 2014. This cGPS expands on the PS-InSAR data by recording a three-dimensional deformation signal. The temporal acquisition of each of the stations is shown in Figure 3. The deployment fixing type can be separated into building-attached antennae (0647, DZYL, EEMS, FROO, OVER, TENP, TJUC, VEEN, ZAND, and ZDVN), and ground-fixed antennae (STED, USQU and ZEER). The different types of antenna location could be important in analysing the deformation signal, as discussed below, since the ground-fixed stations are coupled better to the subsurface and could be less affected by seasonal temperature variation than are GPS measurements on building structures.

## 4. Modeling Method

### 4.1. Compaction Modeling

Surface deformation in the Groningen region is clearly located in the region of gas extraction (Figure 1). Given the spatial distribution of the subsidence we assume that surface deformation results from reservoir compaction. Deformation causes a surface displacement with a minimum lateral spatial wavelength similar to the depth to the reservoir [Segall *et al.*, 1994; Segall, 2010]. Consequently, the sub-surface acts as a low-pass filter restricting our resolution when studying reservoir compaction to a length-scale comparable to

the reservoir depth. Shallow surface deformation should be manifest as short-wavelength features superimposed on the regional signal [*Bourne and Oates*, 2015b]. Possible near-surface deformation (e.g. soil mobility, salt flow effects [*Marketos et al.*, 2015]) are expected to be small and are neglected in this work. In addition, a region to the south of the reservoir comprises the Veendam dissolution Salt Mine is removed from the dataset to minimise the effect from this unrelated shallow surface deformation.

Earlier investigations of reservoir compaction have coupled geodetic inversion with dynamic reservoir simulation models (*Fokker and Van Thienen-Visser* [2015]; *Bourne et al.* [2015]; *Nederlandse Aardolie Maatschappij* [2016]; and *van Thienen-Visser and Fokker* [2017]). *Nederlandse Aardolie Maatschappij* [2016] compaction model is calculated using a combination of reservoir thickness, spatial pressure variation and porosity derived reservoir compressibility, and calibrated to match the history of gas production from each production well and the limited fluid influx from observation wells (see *Nederlandse Aardolie Maatschappij* [2016] for more details). Earlier studies suggest that the misfit between inverted compaction models and reservoir simulation models show a non-linear relationship, hypothesised to be due to a complex compaction behavior of the reservoir. This non-linear relationship is then replicated using either a time-decay model [*Nederlandse Aardolie Maatschappij*, 2013] or a rate-dependent compaction model (RTiCM, *van Thienen-Visser et al.* [2015]). These dynamic reservoir simulation models are based on sparse geological borehole core data constraining the spatial reservoir compressibility and hydrological properties. For these reasons, in this study we do not implement a coupled approach using a dynamic reservoir simulation model, but instead invert surface subsi-

dence measurements directly to estimate reservoir compaction.

In reservoir dynamics, provided that the reservoir lateral variations are greater than the reservoir height, the deformation caused by volume depletion is predominantly in the vertical direction. The total reduction of the reservoir height can therefore be expressed due only to the vertical strain in the reservoir  $\varepsilon_z$ . The expression of the reservoir height change at a instantaneous point can be expressed;

$$\Delta H = \int_0^H C_m(Z) \Delta P(Z) dZ \quad (1)$$

where  $H$  is the reservoir height,  $\Delta H$  is the vertical compaction of the reservoir (referred to as  $m$  throughout the remainder of the article), and  $C_m$  the uniaxial compressibility, the vertical response of the reservoir due to pressure depletion. Averaged over the thickness of the reservoir ( $H$ ) this formulation can be reduced to;

$$\varepsilon_z = \frac{\Delta H}{H} = C_m \Delta P \quad (2)$$

.

As a starting point we assume a linear poroelastic reservoir embedded in a homogeneous elastic half-space. Surface displacements,  $d$ , can be related to the compaction,  $m$ , within the reservoir (divided into cuboids) by the linear equation

$$\vec{d} = \mathbf{G} \vec{m}, \quad (3)$$

where  $\vec{d}$  is the input surface deformation data vector,  $\vec{m}$  the compaction within the separate reservoir cuboids and  $\mathbf{G}$  is the  $d \times m$  Green's Function matrix that relates the reservoir compaction to the surface displacements, using the formulation of [Kuvshinov, 2007] for a strain, also adopted in previous study [Bierman et al., 2015]. The coefficients

of  $\mathbf{G}$  depend on the geometry (the position of the point at the surface relative to the source of strain at depth) and the elastic properties of the half space. The reservoir is discretized as a series of cuboids of  $500\text{m} \times 500\text{m}$  in horizontal extent and with a vertical extent the same as the local reservoir thickness. This problem is overdetermined with  $> 9000$  observation points per epoch related to 3942 modelled parameters.

We describe the inversion procedure used to estimate the compaction ( $\vec{m}$ ) at each epoch based on the geodetic data in the next section. Once  $\vec{m}$  is estimated it can be compared with NAM pressure depletion models in combination with modelled compressibility models from porosity derived measurements.

## 4.2. Principal Component Analysis Inversion Modeling

The time evolution of a deformation source can be derived by inverting the displacement data available at each epoch. Such an approach is computationally expensive for large datasets, and would not impose any coherent time evolution of the source, since it would yield independent models at each epoch. We use a Principal Component Analysis Inversion Method (PCA-IM, *Kositsky and Avouac [2010]*) to overcome these limitations by decomposing the data into a set of linearly uncorrelated principal components, each associated with its own spatial and temporal function. The spatial function for each of these principal components can then be inverted separately for compaction, and combined with the time functions and principal component amplitudes to determine the compaction history. The computational gain of the method comes from the fact that the original dataset can generally be reconstructed within uncertainties with a small number of principal



components. In addition the method makes use of a weighted low rank approximation of the variance-covariance matrix [Srebro and Jaakkola, 2003] which allows weighting of the data according to their uncertainties, and proper handling of missing data [Kositsky and Avouac, 2010].

The appropriate number of principal components is chosen based on the chi-squared statistics, determined by the output of the principal component analysis and the observed surface deformation. The number of components is selected such that the misfit between the model and the data is of the same magnitude as the measurement uncertainties (i.e. where  $\chi_{red}^2 \approx 1.0$ ; Kositsky and Avouac [2010]). The reduced-chi squared is

$$\chi_{red}^2 = \frac{1}{N - P} \sum_{i=1}^k \left[ \frac{X_{obs} - X_{PCA}}{\sigma_{PCA}} \right]^2, \quad (4)$$

where  $N$  is the number of data values,  $P$  is the number of parameters,  $X_{obs}$  is the observations,  $X_{PCA}$  is the PCA modeled displacements and  $\sigma_{obs}$  is the 1-sigma uncertainty of the data, and the sum is over the observations.

Regularization is imposed as the Laplacian smoothing on the reservoir compaction. with overall weighting defined by the smoothing parameter  $\gamma^2$ . Since the surface subsidence data are irregularly distributed, areas with dense data coverage should have lower smoothing on regional compaction. Following the approach suggested by Tarantola [2005], and detailed in Ader *et al.* [2012], we can weight the imposed smoothing with a resolution matrix that takes the form

$$\mathbf{R} = (\mathbf{G}^T \mathbf{C}_d^{-1} \mathbf{G} + \mathbf{\Lambda}^T \mathbf{\Lambda})^{-1} \mathbf{G}^T \mathbf{C}_d^{-1} \mathbf{G} \quad (5)$$

where  $\mathbf{G}$  is the Green's Function matrix,  $\mathbf{C}_d$  is the data covariance matrix and  $\mathbf{\Lambda}$  is the Laplacian Matrix.

The best-fitting compaction model depends on the value of the smoothing parameter, with higher values leading to greater smoothing. The smoothing parameter is then selected by the trade-off between solution roughness (the average second-order finite-difference sum of each fault patch) and the surface deformation misfit function (see Supplementary section 3.2).

Combining the methods outlined above, the governing inversion follows the general form

$$\begin{pmatrix} \vec{W} & \vec{1} \end{pmatrix} \begin{pmatrix} \mathbf{G} \\ \gamma^2 \mathbf{R} \nabla^2 \end{pmatrix} \vec{m} = \begin{pmatrix} \vec{W} & \vec{1} \end{pmatrix} \begin{pmatrix} \vec{d} \\ \vec{0} \end{pmatrix}, \quad (6)$$

where  $\vec{W}$  is the vector of grid-cell weighting for each geodetic dataset;  $\mathbf{G}$  is the Green's Function matrix that relates the reservoir compaction to the LOS displacements using the nucleus of strain formulation of *Geertsma* [1973];  $\nabla^2$  is the finite difference approximation of the Laplacian operator, which acts to smooth the compaction distribution, the importance of which is governed by the value of the scalar smoothing factor  $\gamma^2$ ;  $\mathbf{R}$  is the resolution matrix of the compaction cuboids for each geodetic dataset;  $\vec{m}$  is the vector of compaction for difference cuboids; and  $\vec{d}$  is the input LOS deformation data vector for the geodetic dataset.

## 5. Results

### 5.1. Leveling results 1964-2013

The principal component analysis was conducted for the entire leveling array across the region. The spatial and temporal deformation signals for a 1-component and 2-component PCA analysis are shown in the Supplementary Figures S2 and S3 respectively. The variances of reduced chi-squared values suggest that only one component is statistically significant (Supplementary Table S1). The additional second component primarily accounts for non-spatially correlated large displacements at a few leveling points. These displacements are due to local effects and are not representative of the regional deformation. We therefore use only the first component which accounts for the majority of the original data variance (as shown in Supplementary Table S1).

The temporal evolution of the optical leveling data shows a long-term subsidence since the start of gas extraction (Figure 4). Initially, the subsidence rate was slow between 1964 to 1974, with an increase in the subsidence rate from 1974 to 2013. This surface deformation pattern is consistent with earlier studies (*van Thienen-Visser and Breunese [2015]; Bierman et al. [2015]; Nederlandse Aardolie Maatschappij [2016]*), showing the center of subsidence in the northern section of the reservoir. Comparison between the maximum subsidence and the mean reservoir pressure depletion (Figure 4) shows good agreement across the period of 1964 - 2013. The short-timescale deviations from this common trend between 1990-1992 and 1997-2000 are possibly artifacts due to significant changes in the survey geometry between the acquisitions (see Supplementary Figures S2 and S3).

## 5.2. InSAR results 2004-2016

### 5.2.1. Envisat

The descending track was processed using a principal component analysis during the period 2004-2010. A 3-component analysis is shown in Supplementary Figure S8. The first component displays a long-term monotonic deformation across the period of interest. The second principal component displays a similar spatial pattern to the first principal component, but a temporally varying deformation signal, although this deformation signal is typically close to the noise in measurements. We combined these data with the leveling data to refine the model for the 2004-2016 period, as described above, with additional studies showing agreement between ENVISAT and Optical levelling datasets *Nederlandse Aardolie Maatschappij* [2013]

### 5.2.2. RADARSAT-2

The RADARSAT-2 data is the longest-running InSAR dataset across the Groningen region, spanning late 2009 to 2017. This is the only geodetic dataset that has a significant acquisition before and after the change in gas extraction rate of 2014. This dataset was decomposed into its principal components for the period spanning 2009-2017 using the method described above. To investigate the effects of the atmospheric corrections, we applied a principal component analysis to the results obtained with the two different atmospheric models used by SkyGeo and to the SAR measurements (Supplementary Figures S5, S6 and S7). All displayed nearly identical spatial component in the 1st-principal component with a clear signal restricted to the reservoir extent area. The time functions associated with the first components show for each a monotonic trend. For the

atmospheric-corrected datasets the second and third components showed significantly different deformation trends and spatial distributions that correlate only poorly with the extent of the reservoir and a seasonal effect in the first component. For the raw dataset, uncorrelated for atmospheric effects, the first component is monotonic with the higher components not spatially correlated with the Groningen region. The deformation signals associated with the second and third components are  $\sim 1\text{mm}$  across the period of interest, which is within the source of error expected from the atmospheric effects, and is not significant in the reduced chi-squared analysis (Supplementary Table S1). Due to the similarity of the first component in the atmospherically corrected and uncorrected datasets, and the PCA analysis only statistically significant to the first component for the atmospherically modeled data, we used only the first component derived from the results with no atmospheric correction (Figure 5).

### 5.2.3. TerraSAR-X

TerraSAR-X has been acquired across the region in three viewing geometries, one ascending and two descending tracks. Acquisition of the combined TerraSAR-X data spans 2011-2017, with each track displaying differing initial starting time (TerraSAR-Asc, 2013-06-25, TerraSAR-Dsc1, 2013-06-10, TerraSAR-Dsc2, 2011-12-14). Acquisitions for each of these tracks do not completely cover the region of the Groningen gas reservoir, but the acquisition geometry allows for a combined coverage of the reservoir, with some regions of overlap so that a combined satellite-track inversion can reduce ambiguity in a single line-of-sight (LOS) measurement. The spatial principal component analysis for each of these satellite tracks are shown in Supplementary Figure S9 and the temporal component

in Supplementary Figure S10. Each track shows statistical significance for a single principal component, with all tracks displaying a long-term monotonic deformation signal, in agreement with the RADARSAT-2 data.

### 5.3. InSAR and GPS results after 2014

Since 2014 the Groningen region has been densely monitored by both InSAR and GPS, with data acquired from four satellite tracks (RadarSAT-2 Descending, TerraSARX-Ascending, TerraSARX-Descending 1 and TerraSARX-Descending 2) and 13 cGPS stations (Figure 6). To reduce the orbital and atmospheric effects in the InSAR data and the poor spatial coverage of the GPS network, we implemented a combined inversion technique incorporating all the InSAR tracks and GPS stations.

The PS-InSAR tracks were decomposed into their principal components, with each track displaying only a single statistically significant component, and all tracks showing a long-term monotonic temporal signal (Figure 6, and more information in Supplementary Material 1.2). The cGPS stations are decomposed into three statistically significant principal components, which show a long-term monotonic deformation and two seasonal signals offset by half a year (Supplementary Figure S12). The seasonal components in the cGPS analysis show no clear spatial correlation with the reservoir region, and are unlikely to be related to gas extraction, so are not discussed further in this study (for further information see Supplementary Material 1.3). A common monotonic trend is consistent for all temporal components of all the satellite tracks and cGPS, as shown in Figure 6b. Since all satellite tracks now share the same common temporal evolutions, the InSAR and

cGPS can be combined into a joint inversion of the spatial pattern of subsidence (Figure 6a), with the smoothing factor determined as  $\gamma^2 = 0.8$  (Supplementary Figure S17). This spatial-compaction component was then recombined with the common temporal trend, the averaged temporal trend, to determine compaction variation across the period 2014–2017.

Comparison of the RADARSAT-2 and InSAR-GPS inversion models displays different spatial patterns of compaction, with the InSAR-GPS showing more localized centers and greater compaction in the southern portion of the reservoir (Supplementary Figure S20). However, assesment of the RADARSAT-2 data alone is biased by having only a single acquisition geometry and fewer persistent scatter points in grid cells, giving biased deformation signals over the same areas. This combined method gives a better evaluation of the deformation in the southern portion of the reservoir, an area which shows poor spatial sampling from RADARSAT-2 data alone.

#### **5.4. Compaction since start of gas extraction**

In order to determine the compaction since the start of gas extraction, we combined all the geodetic inversions; with optical leveling spanning 1964–2004, ENVISAT 2004–2009, RADARSAT-2 2009–2014, and InSAR-GPS 2014–2017. To minimize the model roughness needed to fit the data we compared the data fit obtained with different vaules of the regularization parameters ( $\gamma$ ), with a Pearson correlation coefficient determined between the compaction models for the overlapping period. Optical leveling and RADARSAT-2 datasets showed correlation at a significance of 15%, with low correlation expected due to

differences arising in the optical leveling acquisition or LOS bias in the separate inversion. A significance level of 15% was used with the minimal smoothing parameters selected for each of the geodetic inversions (see Supplementary Figure S21). These geodetic datasets are then combined to determine the long-term compaction since the start of gas extraction.

## 5.5. Reservoir Compressibility

Current modelling procedures of *Nederlandse Aardolie Maatschappij* [2013] implement a spatial reservoir uniaxial compressibility determined by defining an empirical relationship between well porosity and uniaxial compressibility measurements (Figure 7a). These values are then extended away from the well using petrological logging, sonic log and seismic data. This procedure is hindered by possible errors in the evaluation of the porosity away from the control points, and also by the possibility that uniaxial compressibility could vary due to factors not represented by the porosity. Prior studies have accommodated these porosity derived compaction estimates, comparing with the surface subsidence history to determine possible anelastic deformation of the reservoir due to depletion. The Rate Type isopach Compaction Model (RTiCM) [*van Thienen-Visser et al.*, 2015] contains a direct elastic response and secular strain (creep), with the work of *van Thienen-Visser et al.* [2015] suggesting that a RTiCM model with a secular strain time-decay at 3-8 years, fits the optical levelling derived surface subsidence better than an elastic response only model. Such a procedure is limited to a single geodetic dataset, with proposed time-decay equal to the repeat acquisition of the geodetic dataset. We reinvestigate the possibility of a time-delayed response by determining the uniaxial compressibility through the combination of the *Nederlandse Aardolie Maatschappij* [2013] pressure depletion model and multi-geodetic derived compaction model, and investigating the spatial and temporal



variability of these uniaxial compressibility values.

Pressure depletion models are generated using the Shell ‘MoRES’ flow models *Nederlandse Aardolie Maatschappij* [2013], determining the time-evolution of pressure depletion at a finite-element mesh of minimum edge length of 50m. This procedure incorporates extraction rates, pressure gauge measurements, flow gauge measurements, and tracer timing measurements in history matching to determine the optimal transmissivity and diffusivity across the reservoir. To allow direct comparison with the geodetically derived compaction model, the pressure depletion is determined for the same regular grid structure and is smoothed spatially by the same function used in the geodetic inversion. The relationship of the geodetically derived compaction is compared to the reservoir modelled pressure diffusion thickness, and is shown in Figure 7b. Lines represented in black are the comparisons at well locations and in grey for locations within the pressure grid. Reservoir uniaxial compressibility can be determined by formulating the gradient for the relationship between pressure-depletion-thickness and geodetic derived compaction, governed by the relationship shown in Equation 2. The variation in these uniaxial compressibility values for all strain volumes are demonstrated in the normalised density map of Figure 7c. The Figure 7c shows no discernible variation of uniaxial compressibility with pressure-depletion, demonstrating that the reservoir is an invariant of uniaxial compressibility with pressure depletion. The values for the invariant compressibility were determined from the mean uniaxial compressibility for each strain volume, with values displayed in Figure 8a. A principal component analysis is applied to the uniaxial compressibility variations for each strain volume through time. The analysis finds a statistical significance to a single

principal component, with this single component explaining 97% of the data variance. The temporal component of the principal component is used to determine the percentage variation of the mean value of uniaxial compressibility through time, and is represented in Figure 8b. The Figure 8b demonstrates scattered variation with no discernible trend from the mean uniaxial compressibility value, with values within 1% of the mean value. The lack of variation of uniaxial compressibility with pressure depletion demonstrates that the reservoir has a dominant poroelastic response across the length-scales of smoothing for geodetic derived compaction models; secular strain deformation could be present at very local length-scales, although would not be recoverable in surface displacement.

The modeled compaction from reservoir simulations is then determined using the modeled pressure-invariant uniaxial compressibility, as shown in Figure 9e-h. Comparisons are then made between the reservoir compaction models and geodetic compaction models in Figure 9, with the variability between the two models representing possible errors from the assumed pressure-invariant uniaxial compressibility. The compaction model determined using the geodetic derived uniaxial compressibility measurements shows good spatial agreement across all acquisition periods, with minor disagreements attributed to spatial smoothing. The epoch of 2014 – 2017 (Figures 9d and 9h) represents a period of reduced production in the northern reservoir, in the Loppersum area. This variation in production is observed in both geodetic and reservoir derived compaction models, demonstrating a poroelastic response to changes in production rates, with no discernible delay between production variation and surface subsidence. Such a direct response to changes in gas extraction disagrees with the prior work of *van Thienen-Visser et al.* [2015], that

attributed the lack of surface subsidence change to a time-delay in rock, compaction compared to my suggested pressure diffusion behaviour.

## 6. Discussion and Conclusion

This study demonstrates the usage of a Principal Component Analysis-based inversion Method to determine reservoir compaction from a diversity of datasets; optical leveling, PS-InSAR and cGPS. With this approach we were able to generate a model of compaction of the Groningen reservoir since the start of gas extraction, reducing the bias from single geodetic acquisition. We applied this procedure using the InSAR datasets pre-processed for the removal of atmospheric bias. Atmospheric effects actually account for a significant percentage of the original data variance, and it is possible that our results are effected by the possible bias in the atmospheric modeling. These sources of bias are alleviated by the fact that we combine the InSAR data with the leveling and GPS measurements that have different, and smaller sensitivity to atmospheric effects. It would be instructive in future studies to use an Independent-Component Analysis (ICA, Gualandi et al, 2016), as in principle it would not require atmospheric correction a priori. The method should allow separating the geodetic signal and atmospheric effects provided they follow independent time evolution. This should reduce the LOS acquisition error and could allow the detection of additional features missed in the current processing procedure. Such a method is promising for the reservoir monitoring as it could help extract sub-annual geodetic signals better than with the PCA-based technique used in this study.

This compaction model is then used in conjunction with a reservoir depletion model [*Nederlandse Aardolie Maatschappij*, 2013] to investigate the reservoir uniaxial compress-

ibility. We identify no temporal variability in the reservoir uniaxial compressibility, a result that contrasts with some previous studies (e.g. *van Thienen-Visser et al.* [2015]). We instead determine a pressure-invariant but spatially variable reservoir compressibility, and demonstrate that this model is sufficient to fit within uncertainties of the various measurements of surface deformation assembled in this study. We demonstrate the production variation imposed in 2014 to reduce compaction in the Loppersum area are observed in both reservoir and geodetically derived compaction models, with small spatial variations attributed to imposed smoothing and detection levels of geodetic datasets. The presence of a dominant pressure-invariant uniaxial compressibility, with the lack of a detectable anelastic effect on reservoir uniaxial compressibility, demonstrates that the reservoir is either represented by a dominant poroelastic response or the material has not yet reached a yielding point where anelastic deformation is more dominant than poroelastic. If the yielding point has not yet been reached, further production induced reservoir strain would supply a greater stress change than an anelastic medium. Therefore, this higher stress could be released in higher magnitude induced seismicity. In addition, the dominance of a poroelastic response allows the use of modulations in reservoir production, and its relationship with surface subsidence, to better constrain reservoir properties (e.g. Diffusivity). These calculations could allow a better constraint of reservoir compaction and its relationship to induced seismicity, and help mitigate future seismic hazard.

**Acknowledgments.** J.S. is supported is supported by the Engineering and Physical Sciences Research Council (EPSRC; Grant RG81432; Geomechanical Properties of the Groningen Reservoir) with CASE support from Shell Global Solutions International B.V.

The data for this paper can be found in the supporting information. Waveform data were provided by Koninklijk Nederlands Meteorologisch Instituut (<http://www.knmi.nl/>). We gratefully acknowledge data and support from Nederlandse Aardoli Maatschappij (Jan Van Elk, Gini Ketellar and Dirk Doornhof) and Shell Global Solutions (Stijn Bierman, Steve Oates, Rick Wentinck, Xander Campman, Alexander Droujinine and Chris Harris). We thank T. Hudson, T. Winder, C. Bacon, T. Agustsdottir, O. Vonk and N. Bloem for their help. University of Cambridge Earth Sciences contribution number esc XXXX.

## References

- Ader, T., J. P. Avouac, J. Liu-Zeng, H. Lyon-Caen, L. Bollinger, J. Galetzka, J. Genrich, M. Thomas, K. Chanard, S. N. Sapkota, S. Rajaure, P. Shrestha, L. Ding, and M. Flouzat (2012), Convergence rate across the Nepal Himalaya and interseismic coupling on the Main Himalayan Thrust: Implications for seismic hazard, *Journal of Geophysical Research: Solid Earth*, 117(4), 1–16, doi:10.1029/2011JB009071.
- Bierman, S., Kraaijeveld, F. and S.J. Bourne, S. (2015), Regularised direct inversion to compaction in the Groningen reservoir using measurements from optical leveling campaigns, *Technical Report. Shell Global Solutions International*.
- Bourne, S. J., and S. J. Oates (2015a), An activity rate model of induced seismicity within the Groningen Field (Part 1), <https://nam-feitenencijfers.data-app.nl/download/rapport/8b6f2ff1-b98e-4148-a1db-bf06881579e5?open=true>.
- Bourne, S. J., and S. J. Oates (2015b), An activity rate model of induced seismicity within the Groningen Field (Part 2), <https://nam-feitenencijfers.data-app.nl/download/rapport/c906565b-6b54-4768-874b-b23b46b1ee5e?open=true>.

- Bourne, S. J. and S. J. Oates (2017), Extreme threshold failures within a heterogeneous elastic thin sheet and the spatial-temporal development of induced seismicity within the Groningen gas field, *Journal of Geophysical Research: Solid Earth*, *122*(12), 10299–10320, doi:10.1002/2014JB011663.
- Bourne, S. J., S. J. Oates, J. Van Elk, and D. Doornhof (2014), A seismological model for earthquakes induced by fluid extraction from a subsurface reservoir, *Journal of Geophysical Research: Solid Earth*, *119*(12), 8991–9015, doi:10.1002/2014JB011663.
- Bourne, S. J., S. J. Oates, J. J. Bommer, B. Dost, J. van Elk, and D. Doornhof (2015), A Monte Carlo method for probabilistic hazard assessment of induced seismicity due to conventional natural gas production, *Bulletin of the Seismological Society of America*, *105*(3), 1721–1738, doi:10.1785/0120140302.
- Dempsey, D., and J. Suckale (2017), Physics-based forecasting of induced seismicity at Groningen gas field, the Netherlands, *Geophysical Research Letters*, *44*(15), 7773–7782, doi:10.1002/2017GL073878.
- Dost, B., F. Goutbeek, T. V. Eck, and D. Kraaijpoel (2012), Monitoring induced seismicity in the North of the Netherlands, *Scientific status report*, <http://www.sciamachy-validation.org/bibliotheek/knmipubWR/WR2012-03.pdf>.
- Ferretti, A., C. Prati, and F. Rocca (2001), Permanent Scatters in SAR Interferometry, *IEEE Transactions on Geoscience and Remote Sensing*, *39*(1), 8–20, doi:10.1109/36.898661.
- Fokker, P. A., and K. Van Thienen-Visser (2015), Inversion of double-difference measurements from optical levelling for the Groningen gas field, *Proceedings of the International Association of Hydrological Sciences*, *372*(January), 375–378, doi:10.5194/piahs-372-

375-2015.

- Fokker, P. A., and K. Van Thienen-Visser (2016), Inversion of double-difference measurements from optical leveling for the Groningen gas field, *International Journal of Applied Earth Observation and Geoinformation*, *49*, 1–9, doi:10.1016/j.jag.2016.01.004.
- Geertsma, J. (1973), Land subsidence above compacting oil and gas reservoirs, *Journal of Petroleum Technology*, *25*, 734–744.
- Hetteema, M., E. Papamichos, and P. Schutjens (2002), Subsidence delay: Field observations and analysis, *Oil and Gas Science and Technology*, *57*(5), 443–458, doi:10.2516/ogst:2002029.
- Ketelaar, G., F. Van Leijen, P. Marinkovic, and R. Hanssen (2006), On the use of point target characteristics in the estimation of low subsidence rates due to gas extraction in Groningen, the Netherlands, *European Space Agency, (Special Publication) ESA SP, 2005*(610).
- Kositsky, A. P., and J. P. Avouac (2010), Inverting geodetic time series with a principal component analysis-based inversion method, *Journal of Geophysical Research: Solid Earth*, *115*(3), 1–19, doi:10.1029/2009JB006535.
- Kuvshinov, B.N. (2017), Elastic and piezoelectric fields due to polyhedral inclusions, *International Journal of Solids and Structures.*, *45*, 1352–1384, doi:10.1016/j.ijsolstr.2007.09.024.
- Lohman, R. B. (2004), The Inversion of Geodetic Data for Earthquake Parameters, Ph.D. Thesis - California Institute of Technology.
- Marketos, G., R. Govers, and C. J. Spiers (2015), Ground motions induced by a producing hydrocarbon reservoir that is overlain by a viscoelastic rocksalt layer: A numerical

model, *Geophysical Journal International*, 203(1), 228–242, doi:10.1093/gji/ggv294.

Nederlandse Aardolie Maatschappij (2013), Technical Addendum to the Winningsplan Groningen 2013, NAM, <https://www.rijksoverheid.nl/binaries/rijksoverheid/documenten/rapporten/2014/01/17/bijlage-1-analyse-over-verzakkingen-geinduceerde-aardbevingen-en-seismische-risico-s/2-2-a-technical-addendum-to-the-winningsplan-groningen-2013.pdf>.

Nederlandse Aardolie Maatschappij (2016), Technical Addendum to the Winningsplan Groningen 2016, NAM, <https://www.rvo.nl/sites/default/files/2016/06/4.Technical%20addendum.pdf>.

Okada, B. (1986), Surface deformation due to shear and tensile faults in a half-space, *International Journal of Rock Mechanics and Mining Sciences & Geomechanics Abstracts*, 23(4), 128, doi:10.1016/0148-9062(86)90674-1.

Plenefisch, T., and K. Bonjer (1997), The stress field in the Rhine Graben area inferred from earthquake focal mechanisms and estimation of frictional parameters, 275, 71–97.

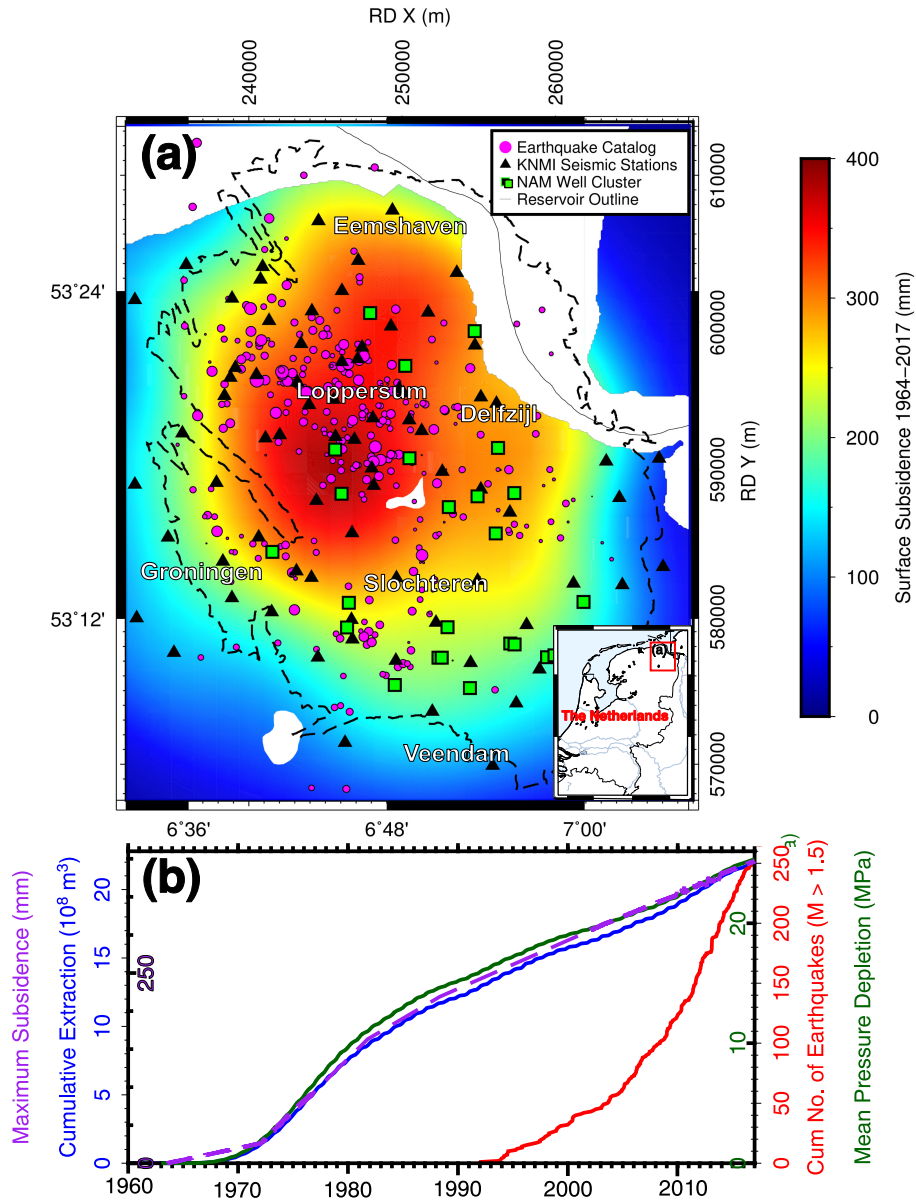
Schneider, F., J. Potdevin, S. Wolf, and I. Faille (1996), Mechanical and chemical compaction model for sedimentary basin simulators, *Tectonophysics*, 263(1-4), 307–317, doi:10.1016/S0040-1951(96)00027-3.

Segall, P. (2010), *Earthquake and Volcano deformation*, Princeton University Press, 1–456.

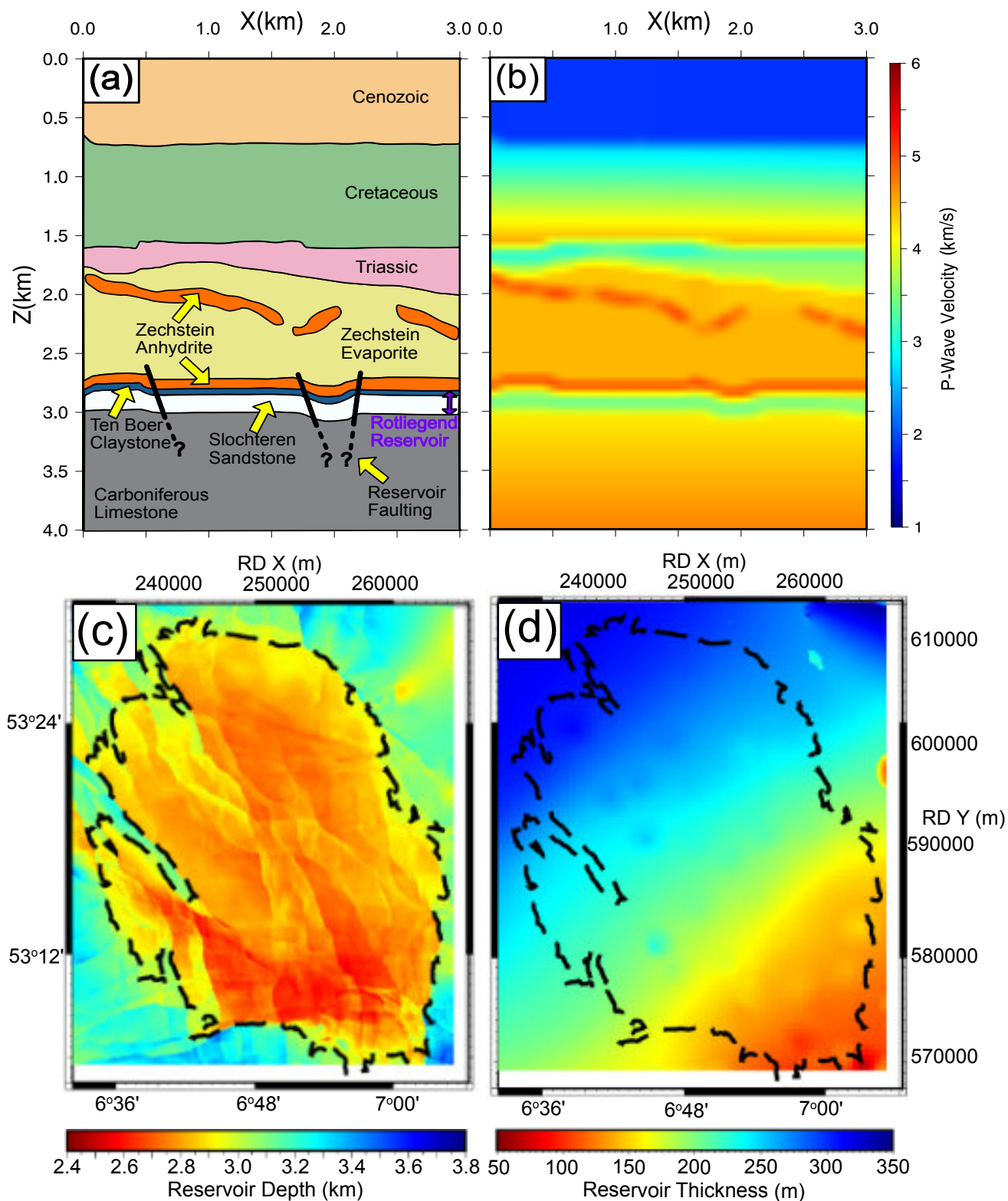
Segall, P., J.-R. Grasso, and A. Mossop (1994), Poroelastic stressing and induced seismicity near the Lacq gas field, southwestern France, *Journal of Geophysical Research*, 99(B8), 15,423, doi:10.1029/94JB00989.



- Simpson, D. W. (1976), Seismicity changes associated with reservoir loading, *Engineering Geology*, 10(2-4), 123–150, doi:10.1016/0013-7952(76)90016-8.
- Spiers, C. J., S. J. Hangx, and A. R. Niemeijer (2017), New approaches in experimental research on rock and fault behaviour in the Groningen gas field, *Geologie en Mijnbouw/Netherlands Journal of Geosciences*, 96(5), s55–s69, doi:10.1017/njg.2017.32.
- Srebro, N. and Jaakkola, T. (2003), *Weighted low-rank approximations*, *Icml*,(3), 720-727, doi:10.1.1.5.3301.
- Tarantola, A. (2005), *Inverse Problem Theory and Methods for Model Parameter Estimation*, Society for Industrial and Applied Mathematics.
- van Thienen-Visser, K., and J. N. Breunese (2015), Induced seismicity of the Groningen gas field: History and recent developments, *The Leading Edge*, 34(6), 664–671, doi:10.1190/tle34060664.1.
- van Thienen-Visser, K., J. P. Pruiksmā, and J. N. Breunese (2015), Compaction and subsidence of the Groningen gas field in the Netherlands, *Proceedings of the International Association of Hydrological Sciences*, 372, 367–373, doi:10.5194/piahs-372-367-2015.
- van Thienen-Visser, K., and P. Fokker (2017), The future of subsidence modelling: compaction and subsidence due to gas depletion of the Groningen gas field in the Netherlands, 1–12 pp., doi:10.1017/njg.2017.10.
- Wang, H. F. (2000), *Theory of Linear Poroelasticity with Applications to Geomechanics and Hydrogeology*, Princeton University Press, 1–304.



**Figure 1.** Relationships of surface subsidence, seismicity, cumulative extraction and well cluster pressure depletion. (a) Modeled surface subsidence between 1964-2017. Seismicity between 1964-2017 shown by pink circles with size scaled by magnitude (Maximum Magnitude  $M_L = 3.4$ ). Well cluster locations shown by green squares. KNMI accelerometer and seismometer locations shown by black triangles. Gas extent within the reservoir shown black dashed outline. (b) Time evolution of the modeled maximum subsidence, cumulative extraction, cumulative number of earthquakes, and mean pressure depletion determined across the reservoir.



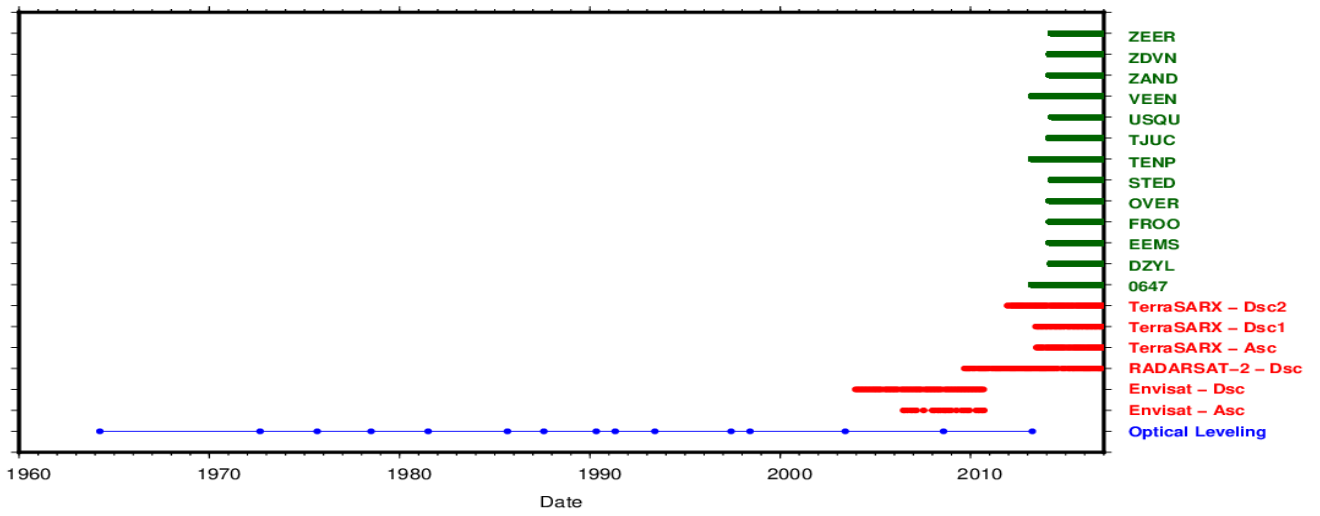
**Figure 2.** Lithological and velocity structure of the NAM 3D Elastic model. (a) Cartoon cross-section of lithologies. (b) P-wave velocity for the corresponding cartoon cross-section. (c)

Depth to the surface of the Rotliegend Reservoir. (d) Thickness of the Rotliegend Reservoir.

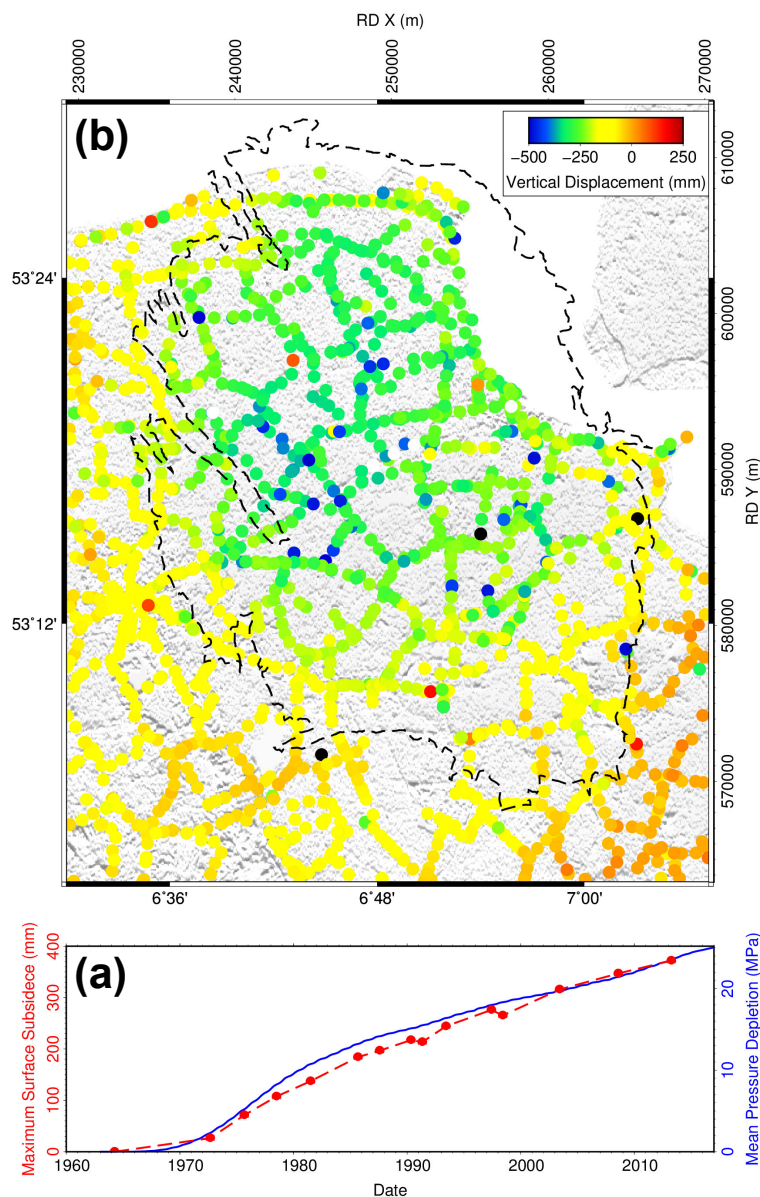
D. B. A. F. T.

April 7, 2019 11:44am

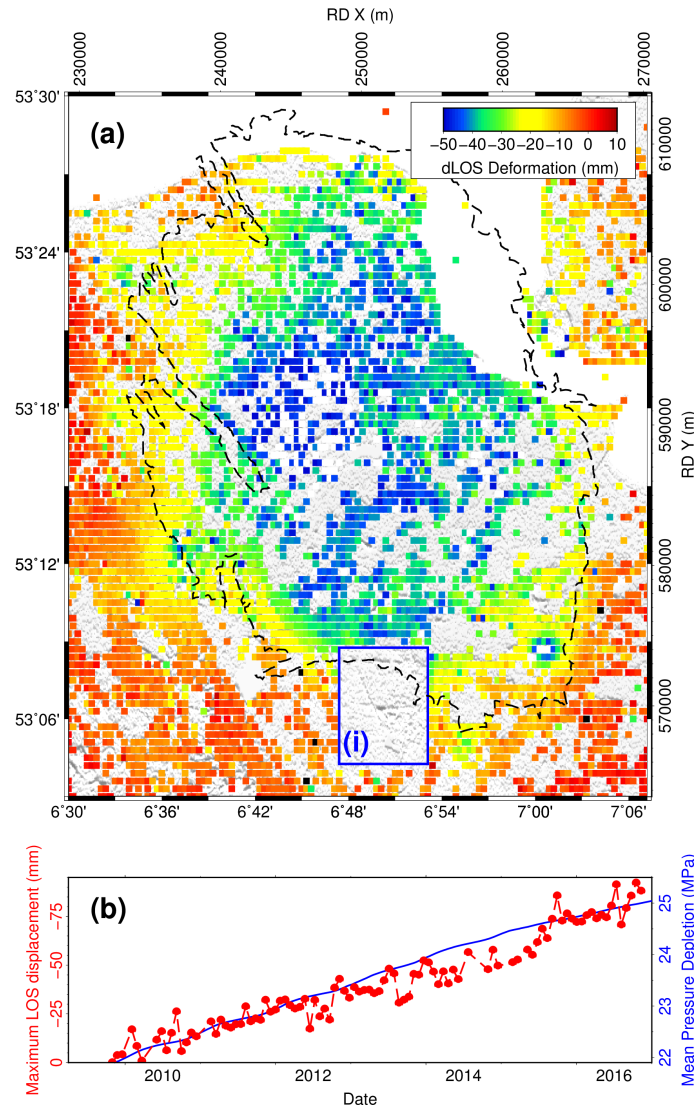
D. B. A. F. T.



**Figure 3.** Temporal distribution of the geodetic datasets used in this study. The colors correspond to the separate data types; with blue representing optical leveling, green GPS and red InSAR.

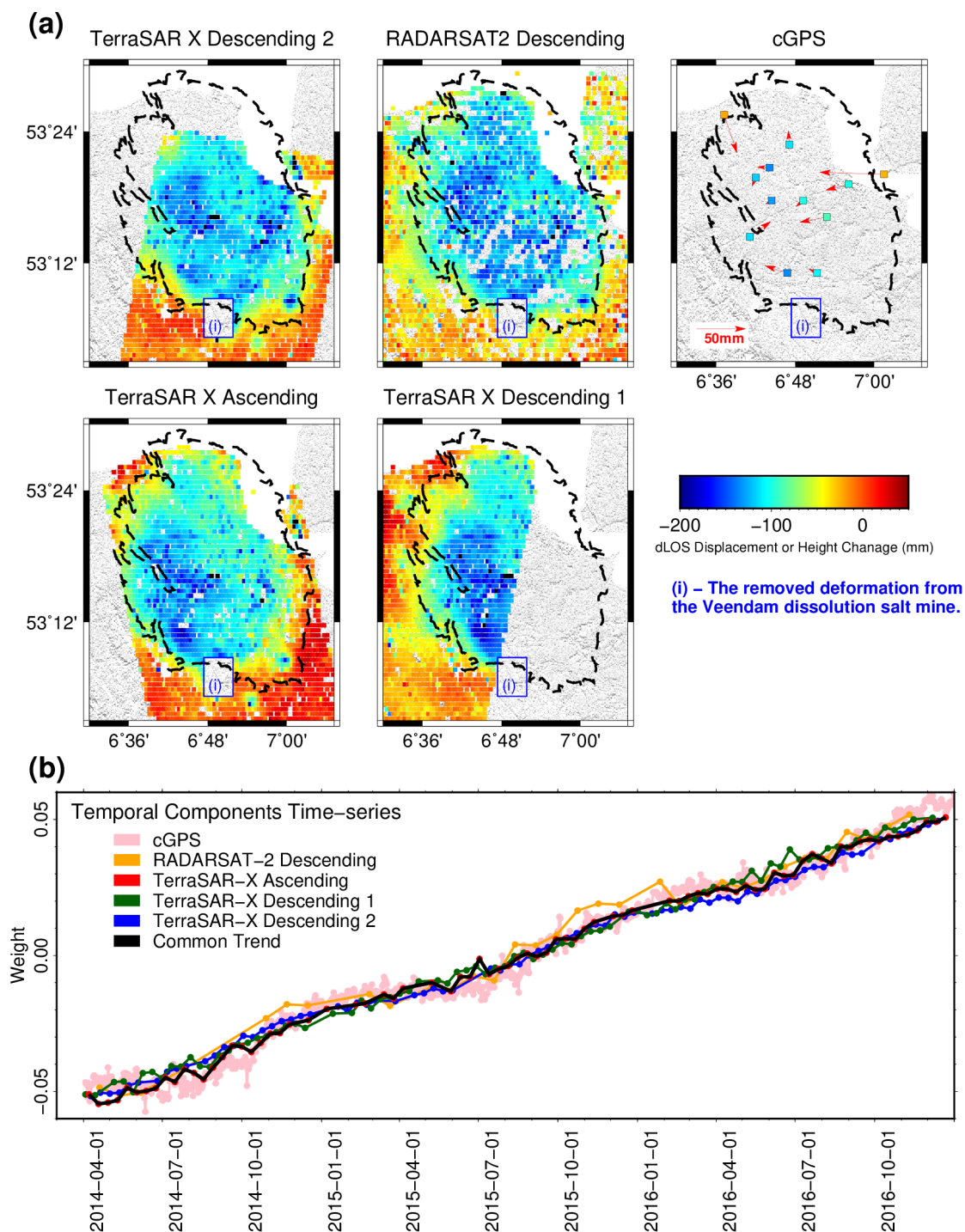


**Figure 4.** Optical leveling subsidence between 1964-2013, determined through the combination of temporal function, principal values, and spatial function from the principal component analysis. (a) represents the total vertical surface deformation across this period for each of the optical leveling benchmarks. Black dashed outline represents the gas extent at reservoir levels. The highest subsidence is in the north-west section of the reservoir. (b) Maximum surface subsidence and mean pressure depletion across the region. Red dots represent the acquisition time of each of the optical leveling campaigns. Blue line shows the mean pressure depletion across the reservoir levels.



**Figure 5.** RADARSAT-2 line-of-sight (LOS) deformation between 2009-2017, determined through the combination of temporal principal components and spatial principal components from the principal component analysis. (a) Total LOS change across the entire period, for each of the regular grid cells determined from the persistent scatter (PS) points. Black dashed outline represents the gas extent in reservoir levels. (b) Maximum LOS deformation and mean pressure depletion across the region. Red dots represent the acquisition time of each of the InSAR acquisitions. Blue line shows the mean pressure depletion across the reservoir levels. (i) represents a region of shallow surface dissolution salt mining. This entire region removed from datasets due to the contamination of the surface deformation signal in this region.





**Figure 6.** Principal component analysis of InSAR and GPS data during the period 2014-2017.

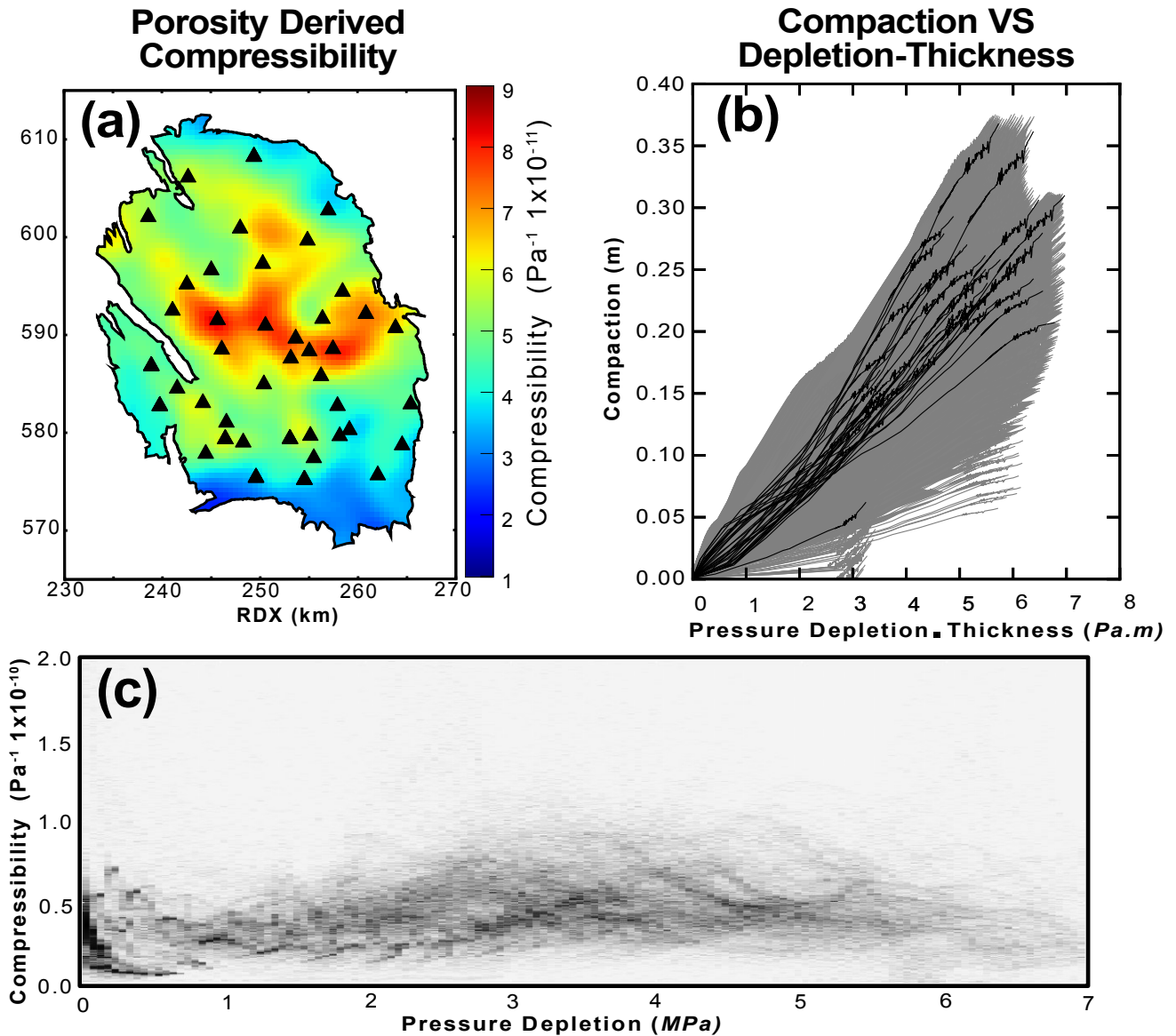
(a) Spatial components of difference in line-of-sight (dLOS) for satellite tracks, and GPS three-dimensional deformation for the period. (b) Temporal components of the surface deformation for

satellite tracks and GPS, with the imposed common linear trend. (i) A region of shallow surface dissolution salt mining. Entire region removed from datasets due to the contamination of the surface deformation in this region.

D R A F T

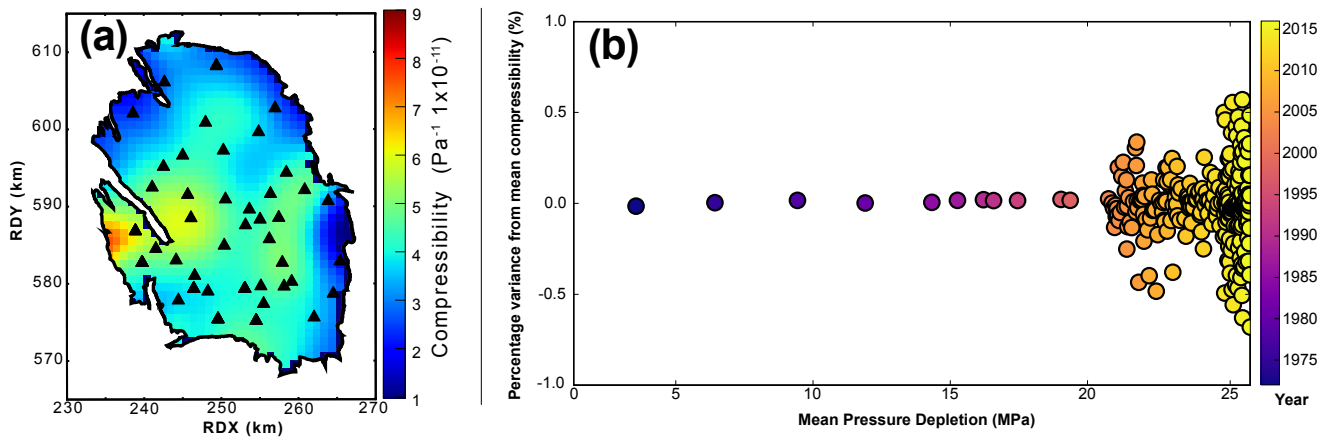
April 7, 2019, 11:44am

D R A F T

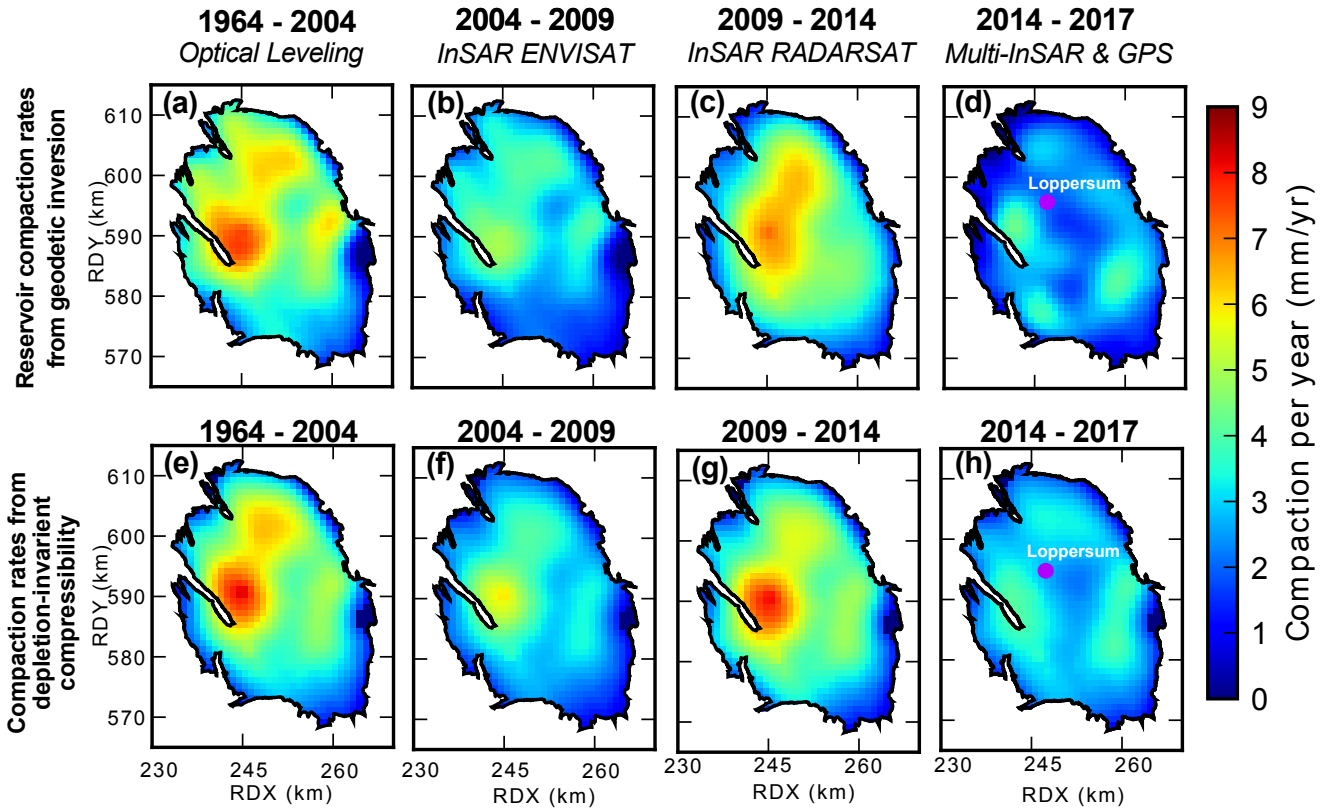


**Figure 7.** Investigation of pressure depletion model relationship with geodetic compaction model. (a) Porosity derived uniaxial compressibility *Nederlandse Aardolie Maatschappij* [2013]. (b) Demonstrates the evolution of geodetic compaction with pressure depletion-thickness for each of the strain volumes. Black lines represent strain volumes next to producing wells, and grey lines the remaining strain volumes. (c) Depletion invariant compressibility of each strain volume, derived from the mean value of compressibility.





**Figure 8.** Principal component analysis of compressibility variations. (a) mean spatial compressibility across all geodetic acquisitions. (b) the variance of the uniaxial compressibility value from the mean value for each geodetic acquisition, relative to the mean pressure depletion. The colour represents the year of the geodetic data acquisition.



**Figure 9.** Spatial compaction rates for pressure depletion model and geodetically derived compaction. (a),(b),(c) and (d) Spatial compaction for different geodetic acquisition periods derived by geodetic inversion. (e),(f),(g) and (h) Spatial compaction for different geodetic acquisition periods derived from *Nederlandse Aardolie Maatschappij* [2013] pressure depletion model imposing a time-invariant geodetically derived compressibility model.