

# Right temporal alpha oscillations as a neural mechanism for inhibiting obvious associations

Caroline Di Bernardi Luft<sup>1</sup>, Ioanna Zioga<sup>1</sup>, Nicholas Thompson<sup>2</sup>, Michael Banissy<sup>3</sup>, Joydeep Bhattacharya<sup>3</sup>

<sup>1</sup>Queen Mary University of London, <sup>2</sup>University of Reading, <sup>3</sup>Goldsmiths, University of London

Submitted to Proceedings of the National Academy of Sciences of the United States of America

**Creative cognition requires mental exploration of remotely connected concepts while suppressing dominant ones. Across four experiments using different samples of participants, we provide evidence that right temporal alpha oscillations play a crucial role in inhibiting habitual thinking modes, thereby paving the way for accessing more remote ideas. In the first experiment, participants completed the compound remote associate task (RAT) in three separate sessions: during right temporal cortex alpha (10 Hz) tACS, left temporal alpha tACS, and sham tACS. Participants performed better under right tACS only on RAT items in which two of the three words shared misleading semantic associations. In the second experiment, we measured EEG while the participants solved RAT items with or without shared misleading associations. We observed an increase in right temporal alpha power when participants correctly solved RAT items with misleading semantic associations. The third experiment demonstrated that while solving divergent thinking tasks, participants came up with more remote ideas when stimulated by right temporal alpha tACS. In the fourth experiment, we found that participants showed higher right temporal alpha power when generating more remote uses for common objects. These studies altogether indicate that right temporal alpha oscillations may support creativity by acting as a neural mechanism for an active inhibition of obvious semantic associations.**

alpha oscillations | creativity | active inhibition | EEG | brain stimulation

## Introduction

A long-standing theory of creativity postulates that the ability to come up with remote and less expected semantic associations is a key characteristic of creative individuals (1). These semantic associations can be represented as edges between different nodes (concepts), linked through their proximity or common use (2). According to the spreading activation theory of semantic processing (3), every time we search for concepts associated with a word, we start from stronger associations to move progressively, in the order of strength of semantic associations, towards weaker or more remote ones (e.g., cat > dog > animal > pet > human > people > family). That is to say that, the activation (concept's retrieval) spreads from strongly connected nodes (concepts) to less connected ones. Creativity requires reaching those more remote associations on the less connected concepts. Using graph theory and an insightful analytical approach, it has been shown that highly creative individuals, compared to less creative ones, show broader and less modular semantic networks (4, 5). Nonetheless, we do not know what are the neural mechanisms which enable to inhibit strongly connected concepts to reach the most remote ones.

A key question is how creative individuals are able to engage flexibility of thought to avoid the "most travelled paths" to get to their alternative routes and draw more remote associations. For instance, more creative individuals are shown to avoid taking obvious routes when solving creative problems (6). Further, a study showed that under low cognitive load, individuals tend to explore alternative routes or more remote associations (7). The authors suggested that inhibition mediates this exploration

by actively and naturally inhibiting most immediate associations, which could explain why we expand our semantic networks as we work on a problem.

Creative thinking involves searching through a clutter of associated concepts or ideas, and the presence of obvious associations is a distraction from the desired creative solution (e.g., finding unusual uses for an object or finding a remote association); such obvious but misleading associations are needed to be actively inhibited for producing more creative associations. Here we tested the hypothesis that alpha oscillatory activity enables us to inhibit the most obvious associations in order to get to more remote ideas. Considering the key role of alpha oscillations in the active inhibition of distractions in both visual search (8, 9) and working memory tasks (10), we predicted that this process of actively inhibiting obvious or strong associations could be mediated by an increase in alpha oscillations as it occurs when inhibiting other internal or external distractors.

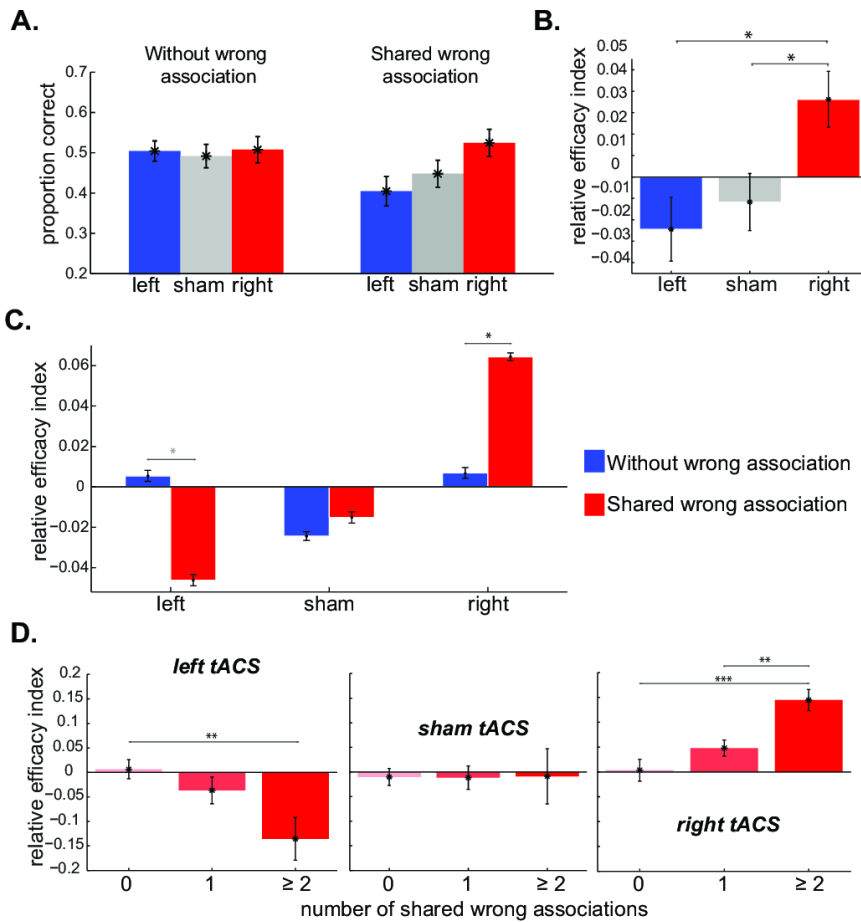
We suggest that this hypothesis could potentially explain a wide range of findings with regards to the role of alpha oscillations (specially right lateralised) in creative problem solving (11). For example, alpha power increases during both divergent (i.e. ability to come up with a large number of original ideas) and convergent (i.e. ability to come up with one appropriate correct solution) creative thinking processes under higher internal attentional demand (12). Right lateralized alpha oscillations have also been shown to be higher during the generation of more original ideas in a divergent thinking task (13). Further, modulating frontal alpha oscillations with transcranial alternating current brain stimulation (tACS) increased performance on divergent thinking tasks (14).

## Significance

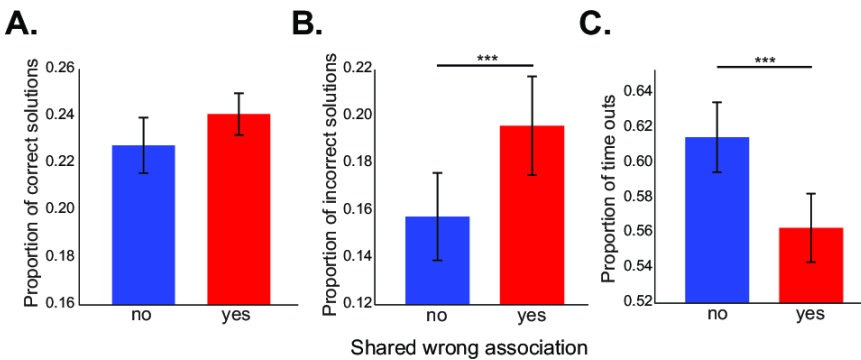
**'Taking a less travelled path' is often considered an effective approach to creativity, i.e., creative thinking calls for a break from habitual thinking and associations. Yet little is known about its underlying neural mechanism. In a series of four independent experiments involving electrophysiological and brain stimulation methods, we provide evidence that this process is mediated by the right temporal alpha oscillations. Alpha oscillations are known to represent a process of active inhibition to suppress irrelevant information, such as inhibiting distractions during visual search. Through monitoring the brain's electrical activity during different creativity tasks and by stimulating the right temporal brain region at the alpha frequency, we show that a similar process of active inhibition is also key to creative thinking.**

## Reserved for Publication Footnotes

137  
138  
139  
140  
141  
142  
143  
144  
145  
146  
147  
148  
149  
150  
151  
152  
153  
154  
155  
156  
157  
158  
159  
160  
161  
162  
163  
164  
165  
166  
167  
168  
169  
170  
171  
172  
173  
174  
175  
176  
177  
178  
179  
180  
181  
182  
183  
184  
185  
186  
187  
188  
189  
190  
191  
192  
193  
194  
195  
196  
197  
198  
199  
200  
201  
202  
203  
204



**Fig. 1. Effects of tACS on performance in the RAT.** **A.** Proportion of correct solutions during left, sham and right tACS averaged over items with vs. without shared wrong semantic associations. **B.** Relative efficacy index during each stimulation condition (left, sham, and right temporal tACS); **C.** Relative efficacy index for each condition for items which have a shared wrong associated word between two of the cues vs. the ones that did not (without shared wrong association); and **D.** Relative efficacy index for items with 0, 1, and 2 or more shared wrong associations for left (first graph), sham (mid-graph) and right tACS stimulation. Error bars represent  $\pm 1$  S.E.M. \*  $p < .05$ , \*\*  $p < .01$ , \*\*\*  $p < .001$ .



**Fig. 2. RAT performance accuracy.** Proportion of: **A.** correct; **B.** incorrect solutions; and **C.** time outs (non-responses), for non-shared (blue) and shared (red) items. Error-bars represent  $\pm 1$  S.E.M. \*\*\*  $p < .001$ .

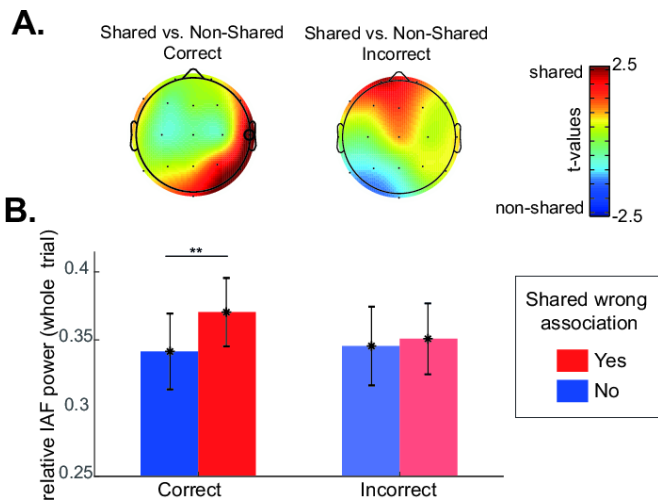
Finally, right lateralized alpha oscillations increased prior to cognitive insight (15-17).

Here, across four experiments with independent samples, we investigated how alpha oscillations contribute to both convergent and divergent creative cognition, and provided a neural mechanism linking these two distinct cognitive processes. For brain stimulation, we targeted the right temporal region due to its key role in semantic processing (18-20), integration of associated information (21), and in recognising associations between different concepts (22). The first experiment aimed at understanding the effects of the right temporal alpha (10 Hz) tACS on the remote associates task (RAT), a classical convergent thinking task, relying on the remote associations between presented cues. We predicted that right alpha tACS would improve performance on RAT items containing a shared wrong semantic association, as these require

stronger active inhibition in order to find the remote association. In the second experiment, by recording EEG, we investigated the brain oscillatory responses to the RAT items that contained shared wrong associations compared to the ones that did not. In the third experiment, we applied tACS at the individual alpha peak frequency (IAF) over the same brain regions of experiment 1, before, during, and after an alternative uses task, a classical divergent thinking task. We predicted that the right temporal alpha tACS would be associated with the generation of more remote ideas. In the fourth experiment, by recording EEG, we investigated the IAF power during the alternative uses task. We predicted that more remote ideas would be associated with higher individual alpha power compared to less remote ideas. Therefore, across all four experiments, our common binding hypothesis was that the right temporal alpha oscillations play a key role in

205  
206  
207  
208  
209  
210  
211  
212  
213  
214  
215  
216  
217  
218  
219  
220  
221  
222  
223  
224  
225  
226  
227  
228  
229  
230  
231  
232  
233  
234  
235  
236  
237  
238  
239  
240  
241  
242  
243  
244  
245  
246  
247  
248  
249  
250  
251  
252  
253  
254  
255  
256  
257  
258  
259  
260  
261  
262  
263  
264  
265  
266  
267  
268  
269  
270  
271  
272

273  
274  
275  
276  
277  
278  
279  
280  
281  
282  
283  
284  
285  
286  
287  
288  
289  
290  
291  
292  
293  
294  
295  
296  
297  
298  
299  
300  
301  
302  
303  
304  
305  
306  
307  
308  
309  
310  
311  
312  
313  
314  
315  
316  
317  
318  
319  
320  
321  
322  
323  
324  
325  
326  
327  
328  
329  
330  
331  
332  
333  
334  
335  
336  
337  
338  
339  
340



**Fig. 3. Individual alpha power during remote associate items with and without wrong shared associations.** A. Topographical distribution of the differences represented as t-values in the relative individual alpha power (IAF, log10); B. Average relative individual alpha power (IAF, log10) at the right temporal electrode (highlighted in A) averaged over the whole trial, separately for correct and incorrect responses in RAT items with shared wrong associations (red) and without (blue). \*  $p < .050$ , \*\*  $p < .025$ , \*\*\*  $p < .001$ .

creative cognition, by inhibiting the obvious semantic associations which can pave the way to more remote and creative ideas.

### Experiment 1

Mednick's remote associate task, (RAT, 1, 23) is a typical convergent thinking task which emphasizes the importance of association of remote concepts in creative cognition. In the RAT's compound-word version (24), participants are presented with three cue words (e.g., walker/main/sweeper) and are asked to find a solution or target word which makes a compound word with each of these three words (e.g., solution is street: streetwalker/main-street/street-sweeper). People tend to seek the solution word by searching in the pool of semantically related words to the presented cues (25-27). However, there is a trap in this habitual thinking; when two cue words have close semantic association with a word that is not the correct solution, this can get in the way of the true solution, thereby acting as an important distractor which attracts internal attention (6). For example, the two cues (ear and tone) of the RAT item ear/tone/finger share a dominant but misleading association (sound), which needs to be inhibited in order to reach the solution (ring). In contrary, the cues of the RAT item high/teacher/mate (solution: school) do not share any strong common association. The ability to inhibit the most obvious but misleading semantic association is therefore of particular benefit for solving difficult remote associate problems (28), and more creative individuals are found to successfully avoid most common but incorrect candidate solutions (6). Yet, the neural mechanism underlying this process of inhibiting the habitual, most obvious associations and promoting the remote, less dominant associations during creative problem solving has largely been uncharacterized.

Considering that right temporal alpha oscillations have been consistently found to be involved in the insightful solutions of these problems (15-17) and in coming up with original ideas (11, 13), we tested the role of alpha oscillations in the temporal regions (right, left, sham). By stimulating alpha oscillations through tACS during the RAT, we tested whether alpha oscillations are involved in establishing weak or distant associations or in helping to inhibit dominant, but misleading, semantic associations. tACS can be used to modulate brain oscillations in a frequency-specific manner (e.g. 29), and is a powerful tool to examine the role of

cortical oscillations in human behaviour by directly manipulating brain states in a controlled fashion. Considering the key role of alpha oscillations in the active inhibition of distractions (8, 9), we predicted that, rather than boosting creative problem solving in general, right temporal alpha would be specifically involved in inhibiting the most obvious associations.

### Results

Using a large dataset of semantic associations (30, 31), we considered the RAT items as having a "shared wrong association" if two out of the three cues were strongly associated with a word which was not the solution (see *Materials and Methods*). Thirty participants received right, left temporal and sham 10 Hz tACS in three separate sessions while solving RAT items with or without shared wrong semantic associations. We entered the proportion of correct solutions to those problems in a 2 (*shared wrong association*: yes vs. no) x 3 (*stimulation condition*: left, sham, right tACS) within-subjects ANOVA. The results (Fig. 1A) revealed a significant effect of *stimulation condition* ( $F_{(2,28)} = 4.52, p = .015, \eta^2 = .139$ ). Importantly, we observed a significant interaction between *shared wrong association* and *stimulation condition* ( $F_{(2,28)} = 3.22, p = .047, \eta^2 = .10$ ), since the proportion of correct solutions was higher during right tACS compared to both sham ( $t_{(28)} = 2.27, p = .031, \text{Cohen's } d = .450$ ) and left tACS ( $t_{(28)} = 2.99, p = .006, \text{Cohen's } d = .555$ ) only for the RAT items with shared wrong associations; there was no significant difference between these conditions for the items without shared wrong associations ( $p > .2$ ). There was no difference between left tACS and sham for either shared or non-shared items ( $p > .2$ ). Unsurprisingly, there was a significant main effect for *shared wrong association* ( $F_{(1,28)} = 8.17, p = .008, \eta^2 = .226$ ) since the accuracy was expectedly higher for items which did not have a shared wrong association.

To compare how successful the stimulation was for each of the RAT items according to their semantic associations, we calculated the *relative efficacy index* for each RAT item (*Materials and Methods*) as the difference between the proportion of correct solutions in one condition (e.g., right tACS) and the average of the proportion of correct solutions in the other two conditions (e.g., sham and left tACS). Positive (negative) values of the index indicate a larger (smaller) proportion of correct solutions under a given stimulation/sham condition in relation to the average of the other two. The mean efficacy index for each condition is presented in Fig. 1B. A repeated-measures ANOVA with *stimulation condition* (left tACS, sham, right tACS) as a factor revealed that more RAT items were correctly solved during the right tACS stimulation compared to the left tACS and sham ( $F_{(2,268)} = 3.593, p = .029, \eta^2 = .026$ ). Further, we observed a significant linear trend in solved RAT items from left, sham to right ( $F_{(2,268)} = 6.04, p = .015, \eta^2 = .043$ ) tACS. Participants correctly solved more RAT items during right than during left stimulation ( $p = .015, \text{Cohen's } d = .425$ ) and sham ( $p = .029, \text{Cohen's } d = .381$ ), but there was no difference between left tACS and sham ( $p = .612$ ).

Next, we probed whether the items with shared wrong associations were more likely to be solved during right tACS compared to left tACS and sham, and whether this effect was stronger on items with more shared wrong associations. The relative efficacy index was analysed in a 3 (*shared wrong association*: 0, 1,  $\geq 2$ ) x 3 (*stimulation condition*) mixed design ANOVA. We observed a significant main effect of *stimulation condition* ( $F_{(2,242)} = 6.06, p = .002, \eta^2 = .052$ ), as well as a significant interaction between *stimulation condition* and *shared wrong association* ( $F_{(4,242)} = 2.57, p = .038, \eta^2 = .041$ ). The effectiveness of right tACS increased with the number of shared wrong associations (Fig. 1C), whereas the opposite was true for left tACS (within-subject effects for the interaction between *stimulation condition* and *shared wrong association*:  $F_{(2,121)} = 4.894, p = .009, \eta^2 = .075$ ). The right tACS



409  
410  
411  
412  
413  
414  
415  
416  
417  
418  
419  
420  
421  
422  
423  
424  
425  
426  
427  
428  
429  
430  
431  
432  
433  
434  
435  
436  
437  
438  
439  
440  
441  
442  
443  
444  
445  
446  
447  
448  
449  
450  
451  
452  
453  
454  
455  
456  
457  
458  
459  
460  
461  
462  
463  
464  
465  
466  
467  
468  
469  
470  
471  
472  
473  
474  
475  
476

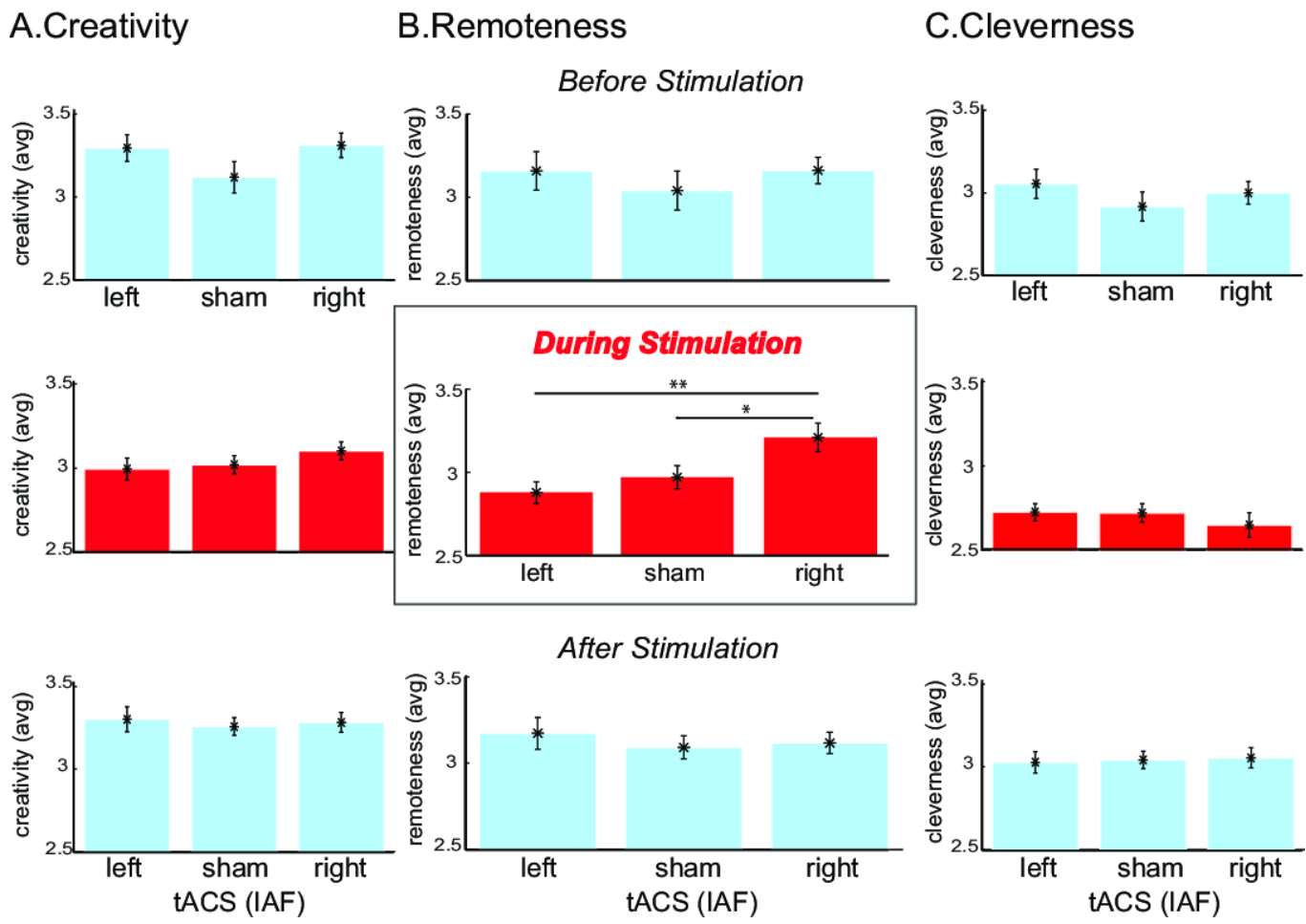


Fig. 4. Average ratings for AUT responses before, during, and after tACS (vs. sham). A. Averaged creativity ratings for items before (top - blue), during (middle - red), and after (bottom - blue) left, sham, and right IAF tACS. B. The same analysis as in A for the remoteness. C. The same analysis as in A and B for the cleverness ratings. The error bars represent +/- 1 S.E.M. \*\*\*  $p < .001$ ; \*\*  $p < .01$ ; \*  $p < .05$ .

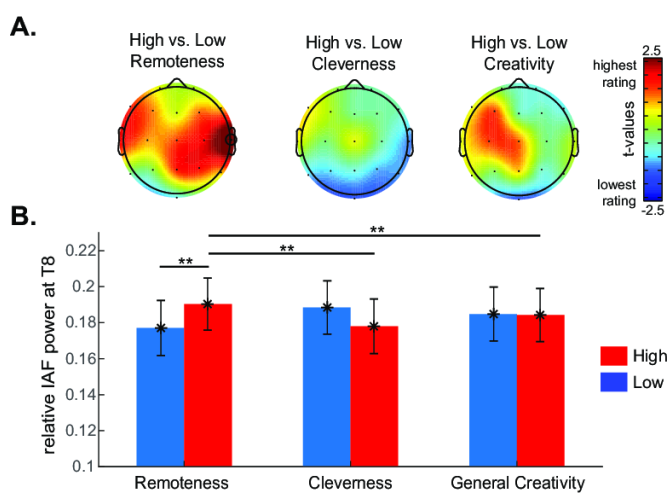


Fig. 5. Differences between AUT answers rated as high vs. low in three rating dimensions. A. Topographical distribution of the differences (paired  $t$ -tests) between IAF power during the generation of ideas which were rated as high (above the median) vs. low (below the median) in remoteness, cleverness and general creativity. B. Mean and variability of IAF power at the right temporal electrode T8 during the generation of ideas rated as high and low in the three criteria. The error bars represent +/- 1 S.E.M. \*\*\*  $p < .001$ ; \*\*  $p < .01$ ; \*  $p < .05$ .

efficacy was higher on RAT items with 2 or more associations as evidenced by a large effect size ( $\geq 2$  vs. zero) shared wrong associations: *Cohen's d* = .848, CI: .811 to .886,  $t_{(73)} = 4.59$ ,  $p < .001$ ). Sham stimulation efficacy was independent of the items' semantic associations ( $p > .3$ ).

**Experiment 2**

The second experiment was designed to investigate the role of alpha oscillations in inhibiting strong misleading associations in a new group of participants. Based on the semantic analysis we performed for Experiment 1, we selected a set of 45 RAT items, which share a misleading semantic association, and another set of 45 RAT items, which do not. Of note, these two sets were matched for difficulty based on the performance accuracy in Experiment 1. We conducted an EEG study comparing individual alpha frequency (IAF) oscillatory power in response to RAT items containing shared vs. non-shared associations. This experiment was also designed to analyse the frequency and spatial specificity of the differences between shared vs. non-shared RAT items. We hypothesized that, in order to solve RAT items with a shared wrong association, participants would need to actively inhibit the prominent, but incorrect association in order to reach the desired solution. Therefore, on the neural level, we predicted that RAT items with shared wrong associations would elicit stronger right temporal IAF power compared to the non-shared RAT items. Further, correct responses to shared items was predicted to be associated with higher IAF power than incorrect responses, due to successful inhibition of the wrong association. At the behavioural

477  
478  
479  
480  
481  
482  
483  
484  
485  
486  
487  
488  
489  
490  
491  
492  
493  
494  
495  
496  
497  
498  
499  
500  
501  
502  
503  
504  
505  
506  
507  
508  
509  
510  
511  
512  
513  
514  
515  
516  
517  
518  
519  
520  
521  
522  
523  
524  
525  
526  
527  
528  
529  
530  
531  
532  
533  
534  
535  
536  
537  
538  
539  
540  
541  
542  
543  
544

level, we predicted that shared RAT items would induce a higher rate of false alarms (incorrect responses), as suggested by others (6, 32).

## Results

Fig. 2A shows the proportion of correct solutions with or without shared wrong association; no difference between the two was observed ( $t_{(56)} = -1.041, p = .302, \text{Cohen's } d = .138$ ), showing that the shared and non-shared categories are matched for difficulty as expected since the two sets of items (shared and non-shared) were earlier matched for accuracy. Fig. 2B shows the proportion of incorrect solutions for the two types of RAT items; as predicted, the participants made more mistakes on items with shared wrong associations compared to non-shared (paired  $t$ -test:  $t_{(56)} = -3.756, p < .001, \text{Cohen's } d = .498$ ), suggesting that shared items induced more false alarms compared to non-shared items. Fig. 2C shows the proportion of no responses or time-out trials; a paired  $t$ -test revealed that participants tended to answer more to the items with shared associations ( $t_{(56)} = 3.865, p < .001, \text{Cohen's } d = .512$ ), which is not surprising since misleading associations might cause the participants to provide the associate word as a solution.

For EEG data, we compared relative power of the individual alpha frequency (IAF) in response to RAT with vs. without shared wrong associations for correct and incorrect solutions (Fig. 3A). IAF power values were analysed by a three-way repeated measures ANOVA with *shared wrong association* (yes, no), *accuracy* (correct, incorrect) and *ROI* (right frontal: RF, left frontal: LF, right temporal: RT, left temporal: LT, right parietal: RP, left parietal: LP, mid-central: MC) as factors. We found that IAF power was higher for shared compared to non-shared items but the effect was dependent on the ROI (interaction between *shared wrong association* and *ROI*:  $F_{(6,246)} = 3.775, p = .001, \eta^2 = .084$ ), and a three-way interaction between *shared wrong association*, *ROI*, and *accuracy* ( $F_{(6,246)} = 2.251, p = .039, \eta^2 = .052$ ). There was no main effect for *accuracy* ( $F_{(1,41)} = 2.432, p = .127, \eta^2 = .056$ ) nor *shared wrong association* alone ( $F_{(1,41)} = .185, p = .669, \eta^2 = .005$ ), neither interactions between the two ( $F_{(1,41)} = .431, p = .515, \eta^2 = .010$ ), indicating that the effects of shared wrong associations on alpha power was specific to the ROIs and dependent on whether the item was solved correctly. To investigate the interaction further, we compared alpha power between shared and non-shared on each of these ROIs ( $t$ -maps shown on Fig.3A). We observed that for correctly solved trials, individualised frequency alpha power was higher when the participants were solving shared compared to non-shared items ( $RT$ :  $t_{(41)} = 2.685, p = .010, \text{Cohen's } d = .416$ ). IAF power at the right temporo-parietal electrode was also higher during RAT items with shared associations ( $t_{(41)} = 2.395, p = .021, \text{Cohen's } d = .369$ ), but not at the right parietal region ( $RP$ :  $t_{(41)} = 1.904, p = .064, \text{Cohen's } d = .293$ , see methods for ROI definition).

In order to investigate whether this effect was specific to alpha oscillation, we conducted the same analysis on the average power over alpha band power (8-12 Hz) and also over the traditional frequency bands, including theta (4-8 Hz), beta (13-30 Hz) and gamma (30-40 Hz). The results showed that the effects were non-significant in other frequency bands ( $p > .05$ ) except for the alpha frequency band in which we observed similar effects compared to the IAF (see SI Appendix, Fig. S2).

### Experiment 3

Experiments 1 and 2 focused on investigating the role of alpha oscillations in inhibiting strong associations in a RAT task. However, if right temporal alpha oscillations are indeed associated with the inhibition of obvious associations in general, we expected that they would also promote more remote responses in other tasks involving creative cognition. Therefore, we conducted a third experiment to investigate the effects of right temporal tACS on the alternative uses task (33), a commonly employed

measure of divergent thinking, i.e. capacity to generate a number of original ideas. A new sample of participants was asked to generate alternative uses to commonly used objects whilst receiving either sham, left or right temporal tACS at their individual alpha frequency (IAF, see *Materials and Methods*) based on their resting state EEG.

Three raters, blind to the conditions (double blinded), rated each response for general creativity, remoteness, and cleverness. The ratings were based on items generated before, during, and after tACS (left, sham, and right IAF). We tested each period separately because the objects used during the stimulation were different (*Materials and Methods*). As the effects of tACS are mainly limited to the stimulation period, we expected that the effects of right IAF tACS would be significant during stimulation. For each participant, we calculated the average fluency (number of non-obvious responses) and the average ratings for general creativity, remoteness, and cleverness (see *Materials and Methods*). Since we expected the effects to be most significant for *remoteness* ratings, we analysed each rating separately by a one-way ANOVA with *stimulation condition* as a within-subjects factor. We predicted that the participants would come up with more remote responses during the right temporal alpha stimulation. We did not run a mixed ANOVA due to the fact that the items in the pre- and post- were counterbalanced but the items during the stimulation were always the same (see *Materials and Methods* for more details).

## Results

First, we observed no significant differences between groups in the pre-test for any of the measures, including fluency ( $F_{(2,33)} = .38, p = .688$ ), general creativity ( $F_{(2,33)} = 1.66, p = .206$ ), remoteness ( $F_{(2,33)} = .42, p = .663$ ), and cleverness ( $F_{(2,33)} = .73, p = .489$ ), suggesting no pre-existing differences between groups. Second, during tACS, we observed, as predicted, a significant effect of *stimulation condition* on the remoteness of the uses ( $F_{(2,33)} = 5.27, p = .010, \text{partial } \eta^2 = .24$ ), but not on their general creativity ( $F_{(2,33)} = .94, p = .401, \text{partial } \eta^2 = .054$ ), fluency ( $F_{(2,33)} = .89, p = .421, \text{partial } \eta^2 = .051$ ), or cleverness ( $F_{(2,33)} = .48, p = .623, \text{partial } \eta^2 = .028$ ). Post-hoc contrasts revealed that the right IAF tACS group came up with significantly more remote items compared to both left IAF tACS ( $p = .003, \text{Cohen's } d = 1.3, C.I. = 1.18-1.39$ ) and sham ( $p = .030, \text{Cohen's } d = 0.92, C.I. = 0.82-1.03$ ) groups (Fig. 4). There was no significant difference between sham and left IAF tACS ( $p = .385$ ). Third, we observed that these effects vanished in the post-test period (i.e. after stimulation had ended) as there was no difference between groups in relation to the remoteness of the ideas ( $F_{(2,33)} = .33, p = .724, \text{partial } \eta^2 = .019$ ), nor in any other measure including fluency ( $F_{(2,33)} = .80, p = .458, \text{partial } \eta^2 = .046$ ), general creativity ( $F_{(2,33)} = .129, p = .879, \text{partial } \eta^2 = .008$ ), and cleverness ( $F_{(2,33)} = .46, p = .955, \text{partial } \eta^2 = .003$ ).

### Experiment 4

In experiment 3, we demonstrated that stimulating right temporal alpha at the IAF is associated with an increase in remoteness of the items generated during a divergent thinking task. Since the stimulation was delivered during the task, we tested whether IAF would be higher for more remote items. In order to address this question, we measured EEG while a new sample of participants generated a number of different ideas in an alternative uses task (AUT). We measured power at each participant's individual alpha frequency peak (IAF) during the generation of each separate idea. All responses were judged by raters blind to the experimental conditions (see *Materials and Methods*).

## Results

We compared IAF power on trials with average ratings above (high) or below (low) the median using a 3 (*rating type*: remoteness, cleverness, general creativity) x 2 (*performance*: high vs. low) x 7 (*ROI*: LF, LT, LP, ML, RF, RT, RP) within-subjects ANOVA. We observed a significant three-way interaction between *rating type*, *performance*, and ROI ( $F_{(12,1476)} = 2.030, p = .019, \text{partial } \eta^2 = .020$ ) since we only observed significant differences in IAF between high and low remoteness ratings. To investigate the interaction further, we run additional 2 (*performance*: high vs. low) x 7 (*ROI*: LF, LT, LP, ML, RF, RT, RP) ANOVAs per rating type. We observed a significant interaction between *performance* and ROI only for remoteness ratings ( $F_{(6,774)} = 3.454, p = .002, \text{partial } \eta^2 = .026$ ), but not for cleverness ( $F_{(6,774)} = 1.349, p = .233, \text{partial } \eta^2 = .010$ ) or for general creativity ( $F_{(6,774)} = 0.738, p = .619, \text{partial } \eta^2 = .006$ ). The topography of the differences between high and low performance on each rating (Fig.4) provides evidence that the differences between items with high vs. low remoteness peaked at the right temporal electrode ( $t_{(123)} = 2.756, p = .007, \text{Cohen's } d = .247$ ). There was no statistically significant difference in IAF power between high and low performance on cleverness and general creativity in any of the ROIs (all contrasts  $p > .1$ ). Furthermore, there was no main effect of *rating performance* ( $F_{(1,123)} = .092, p = .762, \text{partial } \eta^2 = .001$ ), indicating that the differences were not a result of a better performance in general. We conducted the same analysis in the traditional frequency bands (theta: 4-8Hz, alpha: 8-12 Hz, beta:12-30 Hz, and gamma: 30-40 Hz), but observed no significant three-way interaction in any of them nor a main effect of rating performance (for more details of the analysis and the topoplots of the contrasts, see SI Appendix).

## Discussion

In this paper we provide evidence supporting the role of right temporal alpha oscillations in creative cognition. We suggest that alpha oscillations in the right temporal brain region shapes inhibition of the most common or obvious associations. We presented evidence in support of this hypothesis in four separate experiments. In our first experiment, we observed that right temporal alpha tACS was most beneficial for those RAT items that required participants to override prominent but wrong candidate solutions, indicating that right temporal alpha oscillations play a critical role in the ability to override habitual, but misleading, associations. In a second experiment, we observed higher right temporal alpha power while the subjects were trying to solve RAT items with shared wrong associations. In a third experiment, we observed that the right temporal tACS at the IAF was associated with an increase in remoteness of uses in an alternative uses task, but not in cleverness or general creativity. In a fourth experiment, we observed that the participants showed higher right temporal alpha activity (IAF) when they were generating items with higher as compared to lower remoteness. Altogether, our results provided robust evidence supporting the hypothesis that right temporal alpha oscillations are involved in actively inhibiting strong semantic associations, in both convergent and divergent thinking tasks. In the remainder of this discussion, we consider the principal ways our findings critically advance our understanding on the role of alpha oscillations on creative cognition, its neurophysiological mechanisms and the limitations in our approach.

First, our findings support the hypothesis that right lateralized alpha is a core feature of creative cognition, which might underlie our capacity to override strong semantic associations that are shaped by prior experience. Our results also support the hypothesis that exploration is mediated through active inhibition. This idea was put forward by Baror & Bar (7) who observed that when the cognitive load was high, participants tended to fail

in suppressing stronger semantic associations. Alpha oscillations have earlier been linked to the process of active inhibition (34): they do not merely signalise idle activity, but an energy consuming suppression process. Our study provides the first evidence suggesting that right temporal alpha oscillations may be critical to the inhibition of strong semantic associations.

Second, our results shed new light on our understanding of both convergent and divergent creativity. Although the neuroscience of creativity has shown some inconsistent results in relation to its neural mechanisms (35), most of the EEG research on the topic showed a robust association between alpha oscillations and creativity both during task and at rest (for a review see: 11). This involvement with alpha oscillations is evident in a number of studies showing increases in right hemispheric alpha during creative ideation (12, 13, 36-38). For example, alpha oscillations increase over the right hemisphere during idea generation and this increase is higher for more creative ideas (13). Higher alpha oscillations are also predictive of cognitive insight (17). Furthermore, right hemispheric alpha power previous to a hint presentation in an RAT task was predictive of whether the participants would successfully use the hint to correctly solve the problem (16). These studies, though informative, have no control over how much the RAT items or specific tasks required the participants to override immediate semantic associations, yet this process is crucial in both divergent and convergent creative problem solving (39). For instance, if we need to generate alternative uses of a glass, first we must inhibit our past experience leading to think of a glass as a container. Our study is the first (to our knowledge) to demonstrate that right temporal alpha oscillations is linked with overriding these strong associations in both convergent and divergent thinking.

Third, by providing a fine-grained analysis of two well-known creativity tasks (RAT and AUT), we offer a new approach for the investigation of higher order cognition and how it links to more basic neurophysiological processes. For instance, our findings support the account that right hemispheric alpha is involved in inhibiting common or more obvious associations which might get on the way of generating non-obvious creative solutions, i.e. remote associations. We provide evidence that inhibiting wrong semantic associations can be facilitated by alpha tACS on the right, but not left, temporal area. Previous tACS work (14) showed a general effect of frontal alpha (F3, F4 and Cz) on creativity, which could be related to general top-down mechanisms necessary to complete the task rather than specific cognitive processes associated with higher originality of the responses. This is consistent with a previous EEG study (12) showing that both convergent and divergent creativity were associated with higher prefrontal alpha oscillations when these tasks are done under higher internal attentional demand. It is possible that alpha oscillatory activity could represent different processes depending on the brain regions they occur during creative ideation.

Alpha synchronization is known to represent a process of heightened attention by blocking both external and internal distractions, which is necessary for creativity and consistent with the role of alpha oscillations in active inhibition of distractions (8, 9). Previous studies showed that higher alpha-band power is associated with the suppression of distracting information in both working memory (e.g. 10) and attentional tasks (e.g. 40). For creative cognition, we suggest prominent associations between two cues (i.e. wrong candidate solutions) or between an object and its common use need to be inhibited in order to reach more remote ones. Our findings suggest that this inhibitory process is stronger in the right temporal area, which is a key region for processing semantic associations (18, 19, 21, 22). This is relevant since here we show the role of alpha oscillations in a task-relevant area. Considering that alpha oscillations were found to coordinate the timing of the action potentials (41), it has been suggested



(42) that higher alpha frequency power leads to more precise timing of neuronal activity, and therefore reflects the temporal structure for the processes controlling the access to information stored in complex knowledge systems. Selective access to higher order information would depend on inhibiting task-irrelevant memory entries. In our study, both tasks required semantic search for remote associations that might be facilitated by sustained inhibition of stronger associations, which could be considered as task-irrelevant memories. According to Klimesh, Sauseng, & Hanslmayr (42), higher alpha amplitude in task-relevant areas promote inhibition by silencing weakly excited cells inducing a pulsed pattern of action potentials in cells with higher excitation level (threshold), a process which would increase the signal-to-noise ratio in the region, shaping the access to the knowledge systems. Here we speculate that the inhibition of the obvious associations requires a similar tuning of semantic association brain regions. We suggest future studies to combine EEG and fMRI to investigate how alpha oscillations shape the inhibition of the semantic association networks as in our study, we did not have enough spatial resolution to understand the anatomofunctional substrates of this process. It is important to notice that the strongest effects were observed in the individual alpha frequency which we measured based on the peak power at the right temporal region. Although the effects were similar in the traditional alpha frequency band and also pronounced when we stimulated at 10Hz, we cannot rule out that different findings could have emerged if we had compared the conditions using the individual alpha frequency of other regions or stimulated other regions at their own individual peak frequencies.

In summary, we provided robust evidence that the right temporal alpha oscillations play a critical role in the ability to override habitual, but misleading, associations during creative problem solving. 'Taking a less travelled path' is often considered an effective path to creativity (i.e. creative thinking calls for a break from habitual thinking and associations), and our findings support that the underlying cognitive mechanisms are served by the temporal alpha oscillations. In order to understand the processes underlying the production of novel and adequate ideas, we need to break down its constituent processes, dissecting creativity as much as possible at first, and then analyzing them in context, putting them back together through careful consilience.

## Materials and Methods

All participants across four experiments gave written informed consent before the beginning of each experiment. The study protocols of experiments 1 and 3 were approved by the local ethics committee at Goldsmiths, University of London. The study protocols of experiments 2 and 4 were approved by the local ethics committee at Queen Mary University of London. All experiments were conducted in accordance with the World Declaration of Helsinki (1964).

### Experiment 1

**Participants.** Thirty (15 females) right-handed participants was recruited from the student population at Goldsmiths, University of London. Participants received course credit or monetary reimbursement at a rate of £10 per hour. Exclusion criteria were: a personal or family history of epilepsy and/or neuropsychiatric disorders, pregnancy and the presence of any metallic or medical implants. Participants were also excluded if they took any recreational drugs within the past month or consumed any alcohol within 24 hours preceding each experimental session. One participant took part in another experiment on RAT prior to completing this study, and was excluded from analysis. The final sample ( $n = 29$ ) was aged between 18-46 years ( $24.6 \pm 5.9$  years; Mean  $\pm$  SD).

**Experimental design and task.** A counter-balanced, within-participants design was adopted; participants attended three separate stimulation sessions in three different days with an inter-session interval of 7 days. In each session, participants completed a computerised version of the compound word version (24) of the remote associate task (1, 23) under one of three online tACS stimulation conditions – 10 Hz right temporal, 10 Hz left temporal, and sham stimulation. Participants were blind to the condition. On each RAT trial (SI, Fig. S1A), participants were shown three cue words (e.g., line/house/palm), and had to come up with the solution word (tree), which would form a valid compound word with each of the three cue words (treeline, treehouse, palm-tree). The solution word can be joined either at the beginning or end of the cue words, and the resultant compound word may be one that would be written as one word, or as two separate words

(with or without a hyphen). There were 45 trials per stimulation condition (counterbalanced, see SI Materials and methods for details).

**Semantic Word Association.** We extracted the word association measures based on the largest database for word associations (30, 31), available online at <http://www.smallworldofwords.com/new/visualize/#>. This database draws word associations based on a large corpus of English words (12000 English words, with over 70000 participants) and was built based on primed associations by asking participants to give the strongest three associated words for a given word (31). For each cue and solution word of each RAT item (i.e. triplet or triad), we checked the top 20 associated words as listed in the database. To observe if there was a shared wrong association, we looked into the first 20 associated words for each cue and found whether the cues shared a same word as top association. Subsequently, we classified the RAT items according to whether or not they shared a wrong candidate solution (yes = 59/ no = 65). Two additional measures (cue-solution and solution-cue association) were also employed as a control measure (see SI methods and SI additional analyses).

**Transcranial Alternating Current Stimulation (tACS).** Transcranial alternating current stimulation (tACS) was delivered using a NeuroConn DC-Plus Stimulator, a constant current device (NeuroConn Ltd., Ilmenau, Germany). Electrodes were positioned based on the international 10-20 EEG electrode placement system, with one electrode (5cm x 7cm) positioned over the vertex (Cz), and the target electrode (5cm x 5cm) positioned over either the left (T7) or right (T8) anterior temporal lobe, depending on the stimulation condition (Fig. S1B). In each session, a 10 Hz sinusoidal current (1 mA peak-to-peak), with a zero-degree phase offset and no DC offset, was delivered via two saline soaked sponge-covered rubber electrodes, attached to participants' scalps with rubber head straps. The current was ramped up and down over 10 seconds at the beginning and end of stimulation. In both active stimulation sessions, participants received 30 minutes of online stimulation. For the sham condition, the stimulation was delivered for just 30 seconds at the start and the current was subsequently ramped down and remained off for the remainder of the session. In both active sessions, stimulation began five minutes prior to commencement of the experimental task, and then continued for the subsequent 25 minutes during which participants completed the computerised RAT. Across all sessions, electrode impedance was kept below 20 k $\Omega$  throughout.

**Data analysis.** We calculated the accuracy as the percentage of correct solutions for each participant in each condition. To quantify the effectiveness of a stimulation condition on individual RAT item performance, we calculated an index, termed as the relative efficacy index, which was the difference between the proportion of correct solutions for the stimulation condition (e.g., right tACS) and the average of the proportion of correct solution for the other two conditions (left tACS and sham).

### Experiment 2

**Participants.** Sixty-two neurologically healthy adults (39 female) aged between 18 and 27 years ( $20.47 \pm .25$  years: mean  $\pm$  SD) took part in this experiment. All participants were native speakers of English and right-handed (self-reported). Three participants were excluded due to technical problems (computer crashed at the end - data was not recorded), and two more due to poor performance (less than 10 correct responses), resulting in 57 participants used for the behavioural analysis. For the EEG analysis, 5 participants were further excluded due to noisy EEG recording (coughing, muscle artifacts) resulting in a total of 52 participants (5 excluded due to behavioural data and 5 due to poor EEG quality). Because we focused on the comparisons between items with vs. without shared associations which were correctly responded (vs. incorrect), we included in the analysis only participants who had at least 5 valid trials in each condition, resulting in a total number of 42 participants. All participants received a monetary compensation of £10/hour for their participation.

**Experimental task and procedures.** The task was identical to the one in experiment 1 (Fig. S1A) except that there were 90 RAT items in total. There were 45 items with 1 or 2 shared wrong associations, and 45 items with no shared associations (see Experiment 1). We selected these 90 items strategically by excluding items that presented ceiling (>90% correct) or floor (< 10% correct) effects in order to control for difficulty. Further, two categories were matched for difficulty ( $p > .05$ , i.e. no significant differences between the accuracy of the shared vs. nonshared items based on participants' performance in experiment 1). The presentation order of RAT items was randomised across participants.

**EEG recording and analysis.** The EEG was recorded using a Starstim 20 (Neuroelectronics, Spain) and preprocessed according to standard procedures (see SI Materials and Methods). To compute the time-frequency representation (TFR), the EEG signal (entire duration from stimulus presentation to response) was convolved with a complex Morlet wavelet on a trial-by-trial basis. The TFR was calculated from 2 to 40 Hz, in steps of 0.5 Hz, using 6-cycle wavelets. The TFR values were averaged for each of the four conditions - correct shared, correct non-shared, incorrect shared, and incorrect non-shared - for each participant over the whole epoch and also from 0 to 1 second after stimulus presentation. The individual alpha peak frequency (IAF) was calculated as the frequency with the highest power from 8 to 12 Hz at the right temporal electrode (T8). The mean IAF was 10.02 (SD = 1.05).

**Data analysis.** For behavioural data, we compared the proportion of correct and incorrect (false alarms) responses, reaction times and insight

953 ratings of each participant, for shared vs. non-shared items. For EEG data,  
954 we compared brain responses to shared and non-shared RAT items separately  
955 for correct and incorrect solutions; time-out trials were excluded from future  
956 analysis. Spectral power in each frequency immediately following the RAT  
957 item presentation (whole trial and also 0 to 1s) was log-transformed (base  
958 10) due to its positively skewed distribution and divided by the total power  
959 (2 to 40 Hz). Therefore, we analysed relative power in each frequency band:  
960 theta (4-8 Hz), alpha (8-12 Hz), beta (12-30 Hz) and gamma (30-40 Hz), as  
961 well as the IAF, defined as the frequency with the highest power from 8 to  
962 12 Hz (+/- 2 Hz).

### 961 Experiment 3

962 **Participants.** Thirty-six participants aged between 19 and 35 years ( $23.9 \pm$   
963  $4.45$  years; Mean  $\pm$  SD) took part in this study in exchange for course credit or  
964 a monetary reimbursement at £10/hr. Participants were randomly assigned to  
965 one of the three conditions: left, sham, and right tACS. There were no  
966 differences between age and sex distribution between groups. Standard  
967 exclusion criteria were applied (the same criteria for Experiments 1 and 2).

968 **Alternate Uses Task (AUT).** In this divergent thinking task (Guildford,  
969 1967), participants were asked to come up with unusual uses for an everyday  
970 object within a time period of 2 min per object. There were two sets, one  
971 containing 4 objects (Set 1: tin can, newspaper, spoon, baseball cap) and  
972 another containing 3 objects (Set 2: brick, shoe, cardboard box). The first set  
973 was used before and after the stimulation (2 objects each, counterbalanced  
974 across participants), and the second set was used during the stimulation  
975 (presented in random order). Additionally, in the post stimulation period,  
976 the objects presented in the before the stimulation were presented again,  
977 in order to check for changes in performance of the new versus old objects.  
978 The order of the objects was alternated (each subsequent participant started  
979 with a different order).

980 **Creativity ratings.** Responses were rated by three independent evalu-  
981 ators who were blind to the conditions and to the objectives of the  
982 experiment. We used the *Consensual Assessment Technique*, CAT (43), which  
983 is considered by some as the gold standard method for assessing creativity  
984 (44). CAT relies on intuitive ratings by two or more trained evaluators, and  
985 has been successfully used to evaluate creativity in previous studies (e.g.  
986 45, 46). Ratings of creativity have been based on the idea that creativity  
987 depends on three core factors: uncommonness, remoteness, and cleverness  
988 (47, 48). According to the three-factor definition, uncommonness relates  
989 to how unique ideas are (inversely related to their frequency) whereas  
990 remoteness refers to how far the suggested use for an object is from its  
991 common or everyday use (49). Cleverness in this context refers to how  
992 insightful, ironic, humorous, fitting or smart a given use is. In order to  
993 investigate how alpha oscillatory activity relates to each of these processes,  
994 the judges provided ratings of all responses (presented in random order)  
995 on three attributes separately: (i) *general creativity*: how creative they felt  
996 that response was based on intuition and their own ideas of creativity; (ii)  
997 *remoteness*: how remote they thought that the idea was from the original  
998 use; (iii) *cleverness*: how clever or appropriate the idea was. We observed a  
999 reasonable agreement between the three raters (intra-class correlation: IC)  
1000 for the *general creativity* (IC = .67; CI: .64 - .70) and *remoteness* (IC = .70; CI:  
1001 .68 - .72), and a slightly reduced agreement on the *cleverness* judgments (IC  
1002 = .56; CI: .50 - .62). The ratings of three judges were z-scored (all responses,  
1003 per object) and averaged for analysis.

1004 **EEG and tACS protocol.** EEG was recorded before the brain stimulation  
1005 session using a *StarStim* (Neuroelectrics, Spain) with 8 channels. The EEG  
1006 was recorded at a sampling frequency of 500 Hz, referenced to the arithmetic  
1007 average of the left and right mastoids, high-pass filtered at 1 Hz, and low-  
1008 pass filtered at 45 Hz. Automatic artefact rejection was applied at  $\pm 85$   $\mu$ V.  
1009 Power was estimated in each frequency from 1 to 45 Hz in steps of 0.5  
1010 Hz using Welch's Periodogram (50% overlap). For tACS, the stimulation  
1011 frequency was set at the alpha peak frequency (largest power during eyes-  
1012 closed resting period, from 8 to 12 Hz) at the stimulated region (left or right  
1013 temporal) and the current was 1mA (peak to peak). For the sham group,  
1014 half were stimulated (only ramp up) at the IAF on the left temporal and the  
1015 other half at the right. The mean IAF for the left tACS group was 10.00 (SD =  
1016 0.64) and for the right tACS it was 9.99 (SD = 1.16). There was no significant  
1017 difference in the IAF between the left and the right tACS groups ( $t_{(22)} = .027$ ,  
1018  $p = .979$ ).

1019 **Procedures.** At the beginning, participants were instructed to keep their  
1020 eyes closed for a period of 3 minutes while their EEG were recorded; we  
1021 estimated the IAF from this EEG recording. Subsequently, the participants  
1022 responded to 2 practice items and carried on with the pre-test task. Following  
1023 the pre-test, the EEG electrode corresponding to the stimulation condition  
1024 (left or right) was replaced by a round rubber stimulation electrode (25  
1025 cm<sup>2</sup>) soaked in saline solution. In each session, a sinusoidal current (1mA  
1026 peak-to-peak) at the individual alpha peak frequency, with a zero-degree

1027 phase offset and no DC offset, was delivered via two saline soaked sponge-  
1028 covered rubber electrodes. One electrode was positioned on either T8 (right  
1029 temporal) or T7 (left temporal) and the other was always positioned at Fz.  
1030 During sham, half of the participants had the electrodes positioned at T8-Fz  
1031 and the other half at T7-Fz. The participants were blind to the stimulation  
1032 condition. The AUT started after 5 minutes of the start of the stimulation.  
1033 The total duration of the stimulation was 25 minutes, during which the  
1034 participants performed three AUT items and 2 figural creativity tasks (not  
1035 analysed in this paper). Following the stimulation, the stimulation electrode  
1036 (T7 or T8) was removed, the area was cleaned and the EEG electrodes were  
1037 placed. The signal was visually inspected to assure good quality. The EEG  
1038 was recorded immediately after the signal passed this check, including 3-  
1039 minute eyes-closed and 3-minute eyes-open (fixating on a cross on the wall)  
1040 recordings. Following the EEG, the participants completed the AUT and  
1041 figural creativity tasks.

### 1042 Experiment 4

1043 **Participants.** One-hundred thirty participants (67 females) aged be-  
1044 tween 18 and 32 ( $21.2 \pm 2.63$  years; Mean  $\pm$  SD) took part in this experiment in  
1045 exchange for course credit or a monetary reimbursement at a rate of £7.5/h.  
1046 The exclusion criteria were the same as in the previous experiments.

1047 **Alternate Uses Task (AUT).** The experimental task was the same as in  
1048 Experiment 3. The participants were presented with one object (e.g., table)  
1049 and were asked to generate unusual uses for it within a 2-min time period.  
1050 The participants were instructed to fixate at the centre of the screen while  
1051 thinking and press a button to enter an idea. Once they typed and confirmed  
1052 this idea, they kept generating other ideas until the 2 minutes were finished.  
1053 In total, the participants were presented with 4 objects (table, shoe, tin-can,  
1054 and umbrella) and provided an average of 25 ideas for all the objects (SD =  
1055 11.8, range: 2-67).

1056 **EEG recording and analysis.** The EEG was recorded using a Starstim 20  
1057 (Neuroelectrics, Spain) and preprocessed according to standard procedures  
1058 (see *S1: Materials and Methods*). The IAF was estimated as with procedures  
1059 identical to experiments 2 and 3. For estimating the power spectrum during  
1060 the generation of ideas in the AUT trials, we used the whole epoch, from the  
1061 word to the button press (to type the response). We only used those epochs  
1062 which contained more than 2 seconds of usable data. We estimated alpha  
1063 power using Welch periodogram with 1s time-windows with an overlap of  
1064 50%. The spectrum was first estimated from 4 to 40 Hz in steps of 1 Hz. The  
1065 IAF was defined as earlier as in experiment 2 and 3. The mean IAF was 9.73  
1066 (SD = 1.15). For normalization, we divided the power in the IAF adjusted band  
1067 (peak +/- 2 Hz) by the average power of the whole spectrum (4 to 40  
1068 Hz).

1069 **Creativity ratings.** As in experiment 3, each response to the AUT was  
1070 rated for general creativity, remoteness, and cleverness, on a scale from 0  
1071 (least) to 10 (most), as described in Experiment 3. Due to the large number  
1072 of responses (130 participants - 4810 responses in total), 2 raters rated all  
1073 responses related with 2 objects, and other 2 raters another two objects.  
1074 Another 2 raters rated the entire pool of responses. The ratings were subse-  
1075 quently z-scored separately, per item and per rater. This procedure resulted  
1076 in a good agreement (intra-class correlation) between raters for the creativity  
1077 ( $\alpha = .88$ ), remoteness ( $\alpha = .89$ ) and cleverness ( $\alpha = .84$ ). This procedure resulted  
1078 in an average of 12 ideas per condition (high and low), with the average  
1079 idea (+/- SD) of 12.8 (SD=6) for high and 12.6 (SD = 5.88) for low remote,  
1080 12.8 (SD=5.9) for high and 12.7 (SD=5.9) for low cleverness, 12.8 for high  
1081 (SD=6) and 12.6 (SD=5.9) for low creativity. There was no difference in the  
1082 number of trials between any of the conditions ( $p > .8$ ). However, because  
1083 some participants had a low number of ideas, we conducted the main analysis  
1084 using data of the participants who had a minimum of 5 ideas per condition  
1085 ( $n = 124$ ). Nonetheless, we present the analysis with all participants in the *S1*.

1086 **Data analysis.** We compared the whole epoch alpha band power (IAF  
1087 +/- 2 Hz) during the idea generation phase (or "thinking time"), i.e. when  
1088 the subjects were engaged with generating ideas. For each participant, we  
1089 selected the trials with ratings higher or lower than the median for each  
1090 rating individually (remoteness, cleverness, general creativity). We calculated  
1091 the relative alpha power (by dividing it by total power) on the individual  
1092 alpha frequency band (as in Experiments 2 and 3) in the low vs. high rating  
1093 trials of each subject.

### 1094 Acknowledgments

1095 We would like to thank Oliwia Zaborowska, Francesca Zingales, Rawan  
1096 Hassan, Leyla Al-Ashaab Mendiola, Naml Hussain, Ellie York, and Ayesha  
1097 Khan for helping to collect EEG data. The authors were supported by the  
1098 CREAM project that was funded by the European Commission under  
1099 Grant Agreement no 612022. This publication reflects the views only of the  
1100 authors, and the European Commission cannot be held responsible for any  
1101 use which may be made of the information contained therein.

1. Mednick SA (1962) The associative basis of the creative process. *Psych Rev* 69:220-232.
2. Borge-Holthoefer J & Arenas A (2010) Semantic networks: Structure and dynamics. *Entropy* 12(5):1264-1302.
3. Collins AM & Loftus EF (1975) A spreading-activation theory of semantic processing. *Psychol Rev* 82(6):407.

4. Kenett YN, Anaki D, & Faust M (2014) Investigating the structure of semantic networks in low and high creative persons. *Frontiers in Human Neuroscience* 8:407.
5. Kenett YN, et al. (2018) Flexibility of thought in high creative individuals represented by percolation analysis. *Proceedings of the National Academy of Sciences*:201717362.
6. Gupta N, Jang Y, Mednick SC, & Huber DE (2012) The road not taken: creative solutions



1089  
1090  
1091  
1092  
1093  
1094  
1095  
1096  
1097  
1098  
1099  
1100  
1101  
1102  
1103  
1104  
1105  
1106  
1107  
1108  
1109  
1110  
1111  
1112  
1113  
1114  
1115  
1116  
1117  
1118  
1119  
1120  
1121  
1122  
1123  
1124  
1125  
1126  
1127  
1128  
1129  
1130  
1131  
1132  
1133  
1134  
1135  
1136  
1137  
1138  
1139  
1140  
1141  
1142  
1143  
1144  
1145  
1146  
1147  
1148  
1149  
1150  
1151  
1152  
1153  
1154  
1155  
1156

require avoidance of high-frequency responses. *Psychological science* 23(3):288-294.

7. Baror S & Bar M (2016) Associative Activation and Its Relation to Exploration and Exploitation in the Brain. *Psychological science*:0956797616634487.

8. Bonnefond M & Jensen O (2013) The role of gamma and alpha oscillations for blocking out distraction. *Communicative & integrative biology* 6(1):e22702.

9. Haegens S, et al. (2015) Laminar Profile and Physiology of the alpha Rhythm in Primary Visual, Auditory, and Somatosensory Regions of Neocortex. *The Journal of neuroscience : the official journal of the Society for Neuroscience* 35(42):14341-14352.

10. Sauseng P, et al. (2009) Brain Oscillatory Substrates of Visual Short-Term Memory Capacity. *Current Biology* 19(21):1846-1852.

11. Fink A & Benedek M (2014) EEG alpha power and creative ideation. *Neuroscience and biobehavioral reviews* 44:111-123.

12. Benedek M, Bergner S, Konen T, Fink A, & Neubauer AC (2011) EEG alpha synchronization is related to top-down processing in convergent and divergent thinking. *Neuropsychologia* 49(12):3505-3511.

13. Schwab D, Benedek M, Papousek I, Weiss EM, & Fink A (2014) The time-course of EEG alpha power changes in creative ideation. *Frontiers in Human Neuroscience* 8:310.

14. Lustenberger C, Boyle MR, Foulser AA, Mellin JM, & Frohlich F (2015) Functional role of frontal alpha oscillations in creativity. *Cortex; a journal devoted to the study of the nervous system and behavior* 67:74-82.

15. Sheth BR, Sandkuhler S, & Bhattacharya J (2009) Posterior Beta and anterior gamma oscillations predict cognitive insight. *Journal of cognitive neuroscience* 21(7):1269-1279.

16. Sandkuhler S & Bhattacharya J (2008) Deconstructing insight: EEG correlates of insightful problem solving. *PLoS one* 3(1):e1459.

17. Jung-Beeman M, et al. (2004) Neural activity when people solve verbal problems with insight. *PLoS Biol* 2(4):E97.

18. Tranel D, Damasio H, & Damasio AR (1997) A neural basis for the retrieval of conceptual knowledge. *Neuropsychologia* 35(10):1319-1327.

19. Lambon Ralph MA, Cipolotti L, Manes F, & Patterson K (2010) Taking both sides: do unilateral anterior temporal lobe lesions disrupt semantic memory? *Brain* 133(11):3243-3255.

20. Binder JR, Desai RH, Graves WW, & Conant LL (2009) Where is the semantic system? A critical review and meta-analysis of 120 functional neuroimaging studies. *Cerebral Cortex* 19(12):2767-2796.

21. St George M, Kutas M, Martinez A, & Sereno MI (1999) Semantic integration in reading: engagement of the right hemisphere during discourse processing. *Brain* 122(7):1317-1325.

22. Jung-Beeman M (2005) Bilateral brain processes for comprehending natural language. *Trends in cognitive sciences* 9(11):512-518.

23. Mednick SA & Mednick MT (1967) *Examiner's manual: Remote Associates Test* (Houghton Mifflin, Boston).

24. Bowden EM & Jung-Beeman M (2003) Normative data for 144 compound remote associate problems. *Behavior research methods, instruments, & computers : a journal of the Psychonomic Society, Inc* 35(4):634-639.

25. Benedek M & Neubauer AC (2013) Revisiting Mednick's Model on Creativity-Related Differences in Associative Hierarchies. Evidence for a Common Path to Uncommon Thought. *The Journal of creative behavior* 47(4):273-289.

26. Davelaar EJ (2015) Semantic Search in the Remote Associates Test. *Topics in cognitive science* 7(3):494-512.

27. Smith KA, Huber DE, & Vul E (2013) Multiply-constrained semantic search in the Remote Associates Test. *Cognition* 128(1):64-75.

28. Klein A & Radia T (2014) The Usual and the Unusual: Solving Remote Associates Test Tasks Using Simple Statistical Natural Language Processing Based on Language Use. *The Journal of creative behavior* 49(1):13-37.

29. Helfrich RF, et al. (2014) Entrainment of brain oscillations by transcranial alternating current stimulation. *Current biology : CB* 24(3):333-339.

30. De Deyne S & Storms G (2008) Word associations: network and semantic properties. *Behavior research methods* 40(1):213-231.

31. De Deyne S, Navarro DJ, & Storms G (2013) Better explanations of lexical and semantic cognition using networks derived from continued rather than single-word associations. *Behavior research methods* 45(2):480-498.

32. Harkins SG (2006) Mere effort as the mediator of the evaluation-performance relationship. *J Pers Soc Psychol* 91(3):436.

33. Guilford JP (1967) *The nature of human intelligence*. (McGraw Hill, New York).

34. Klimesch W, Sauseng P, & Hanslmayr S (2007) EEG alpha oscillations: the inhibition-timing hypothesis. *Brain Res Rev* 53(1):63-88.

35. Dietrich A & Kanso R (2010) A review of EEG, ERP, and neuroimaging studies of creativity and insight. *Psychological bulletin* 136(5):822-848.

36. Fink A, Graif B, & Neubauer AC (2009) Brain correlates underlying creative thinking: EEG alpha activity in professional vs. novice dancers. *NeuroImage* 46(3):854-862.

37. Fink A, et al. (2009) The creative brain: investigation of brain activity during creative problem solving by means of EEG and fMRI. *Human brain mapping* 30(3):734-748.

38. Grabner RH, Fink A, & Neubauer AC (2007) Brain correlates of self-rated originality of ideas: evidence from event-related power and phase-locking changes in the EEG. *Behavioral neuroscience* 121(1):224-230.

39. Koutstaal W & Binks J (2015) *Innovating minds: Rethinking creativity to inspire change* (Oxford University Press).

40. Kelly SP, Lalor EC, Reilly RB, & Foxe JJ (2006) Increases in alpha oscillatory power reflect an active retinotopic mechanism for distractor suppression during sustained visuospatial attention. *Journal of neurophysiology* 95(6):3844-3851.

41. Haegens S, Nacher V, Luna R, Romo R, & Jensen O (2011)  $\alpha$ -Oscillations in the monkey sensorimotor network influence discrimination performance by rhythmic inhibition of neuronal spiking. *Proceedings of the National Academy of Sciences* 108(48):19377-19382.

42. Klimesch W, Sauseng P, & Hanslmayr S (2007) EEG alpha oscillations: the inhibition-timing hypothesis. *Brain research reviews* 53(1):63-88.

43. Amabile TM (1982) Social psychology of creativity: A consensual assessment technique. *Journal of personality and social psychology* 43(5):997.

44. Baer J & McKool SS (2014) The gold standard for assessing creativity. *International Journal of Quality Assurance in Engineering and Technology Education (IJQAETE)* 3(1):81-93.

45. Beaty RE, et al. (2018) Robust prediction of individual creative ability from brain functional connectivity. *Proceedings of the National Academy of Sciences*:201713532.

46. Benedek M, et al. (2014) Creating metaphors: The neural basis of figurative language production. *NeuroImage* 90:99-106.

47. Christensen PR, Guilford JP, & Wilson R (1957) Relations of creative responses to working time and instructions. *Journal of experimental psychology* 53(2):82.

48. Wilson RC, Guilford JP, & Christensen PR (1953) The measurement of individual differences in originality. *Psychological bulletin* 50(5):362.

49. Silvia PJ, et al. (2008) Assessing creativity with divergent thinking tasks: Exploring the reliability and validity of new subjective scoring methods. *Psychology of Aesthetics, Creativity, and the Arts* 2(2):68.

1157  
1158  
1159  
1160  
1161  
1162  
1163  
1164  
1165  
1166  
1167  
1168  
1169  
1170  
1171  
1172  
1173  
1174  
1175  
1176  
1177  
1178  
1179  
1180  
1181  
1182  
1183  
1184  
1185  
1186  
1187  
1188  
1189  
1190  
1191  
1192  
1193  
1194  
1195  
1196  
1197  
1198  
1199  
1200  
1201  
1202  
1203  
1204  
1205  
1206  
1207  
1208  
1209  
1210  
1211  
1212  
1213  
1214  
1215  
1216  
1217  
1218  
1219  
1220  
1221  
1222  
1223  
1224