



$\gamma\delta$ T Cells and Tumor Microenvironment: From Immunosurveillance to Tumor Evasion

Elena Lo Presti¹, Gabriele Pizzolato^{1,2}, Anna Maria Corsale¹, Nadia Caccamo¹, Guido Sireci¹, Francesco Dieli¹ and Serena Meraviglia^{1*}

¹ Department of Biopathology, Università degli Studi di Palermo, Palermo, Italy, ² Department of Biomedical Sciences, Humanitas Università, Rozzano, Italy

OPEN ACCESS

Edited by:

Remy Bosselut,
National Cancer Institute (NCI),
United States

Reviewed by:

Sid P. Kerkar,
Boehringer Ingelheim,
United States
Daniela Wesch,
University Hospital
Schleswig-Holstein,
Germany
Barbara Castella,
Università degli Studi
di Torino, Italy

*Correspondence:

Serena Meraviglia
serena.meraviglia@unipa.it

Specialty section:

This article was submitted
to T Cell Biology,
a section of the journal
Frontiers in Immunology

Received: 28 March 2018

Accepted: 05 June 2018

Published: 15 June 2018

Citation:

Lo Presti E, Pizzolato G, Corsale AM, Caccamo N, Sireci G, Dieli F and Meraviglia S (2018) $\gamma\delta$ T Cells and Tumor Microenvironment: From Immunosurveillance to Tumor Evasion. *Front. Immunol.* 9:1395. doi: 10.3389/fimmu.2018.01395

$\gamma\delta$ T cells possess cytotoxic antitumor activity mediated by production of proinflammatory cytokines, direct cytotoxic activity, and regulation of the biological functions of other cell types. Hence, these features have prompted the development of therapeutic strategies in which $\gamma\delta$ T cells agonists or *ex vivo*-expanded $\gamma\delta$ T cells are administered to tumor patients. Several studies have shown that $\gamma\delta$ T cells are an important component of tumor-infiltrating lymphocytes in patients affected by different types of cancer and a recent analysis of ~18,000 transcriptomes from 39 human tumors identified tumor-infiltrating $\gamma\delta$ T cells as the most significant favorable cancer-wide prognostic signature. However, the complex and intricate interactions between tumor cells, tumor microenvironment (TME), and tumor-infiltrating immune cells results in a balance between tumor-promoting and tumor-controlling effects, and $\gamma\delta$ T cells functions are often diverted or impaired by immunosuppressive signals originating from the TME. This review focuses on the dangerous liaison between $\gamma\delta$ T cells and tumoral microenvironment and raises the possibility that strategies capable to reduce the immunosuppressive environment and increase the cytotoxic ability of $\gamma\delta$ T cells may be the key factor to improve their utilization in tumor immunotherapy.

Keywords: $\gamma\delta$ T cells, tumor microenvironment, immunotherapy, cytotoxicity, immunosuppression

THE TUMOR MICROENVIRONMENT (TME)

Tumors develop in a composite and heterogeneous microenvironment consisting of endothelial cells, stromal cells, and immune cells; all of them act and cooperate either in direct or indirect way with tumor cells promoting tumor proliferation, invasion, and metastasis or actively interfering with its development.

It is well known that a large number of cells of both the innate and adaptive immune compartments are present at the tumor site since the early steps of cancer development, exerting immunosurveillance (1) and controlling spontaneous neoplastic diseases (2), even though the composition and extent of the immune infiltrates consistently varies among individuals (3, 4).

Tumors are able to escape from the host immune system and take advantage on the presence of infiltrating immune cells by modifying their functions and creating a TME favorable to tumor progression. In fact, tumor-infiltrating immune cells, together with stromal cells and extracellular matrix create an inflammatory milieu responsible for tumor expansion and dissemination and for

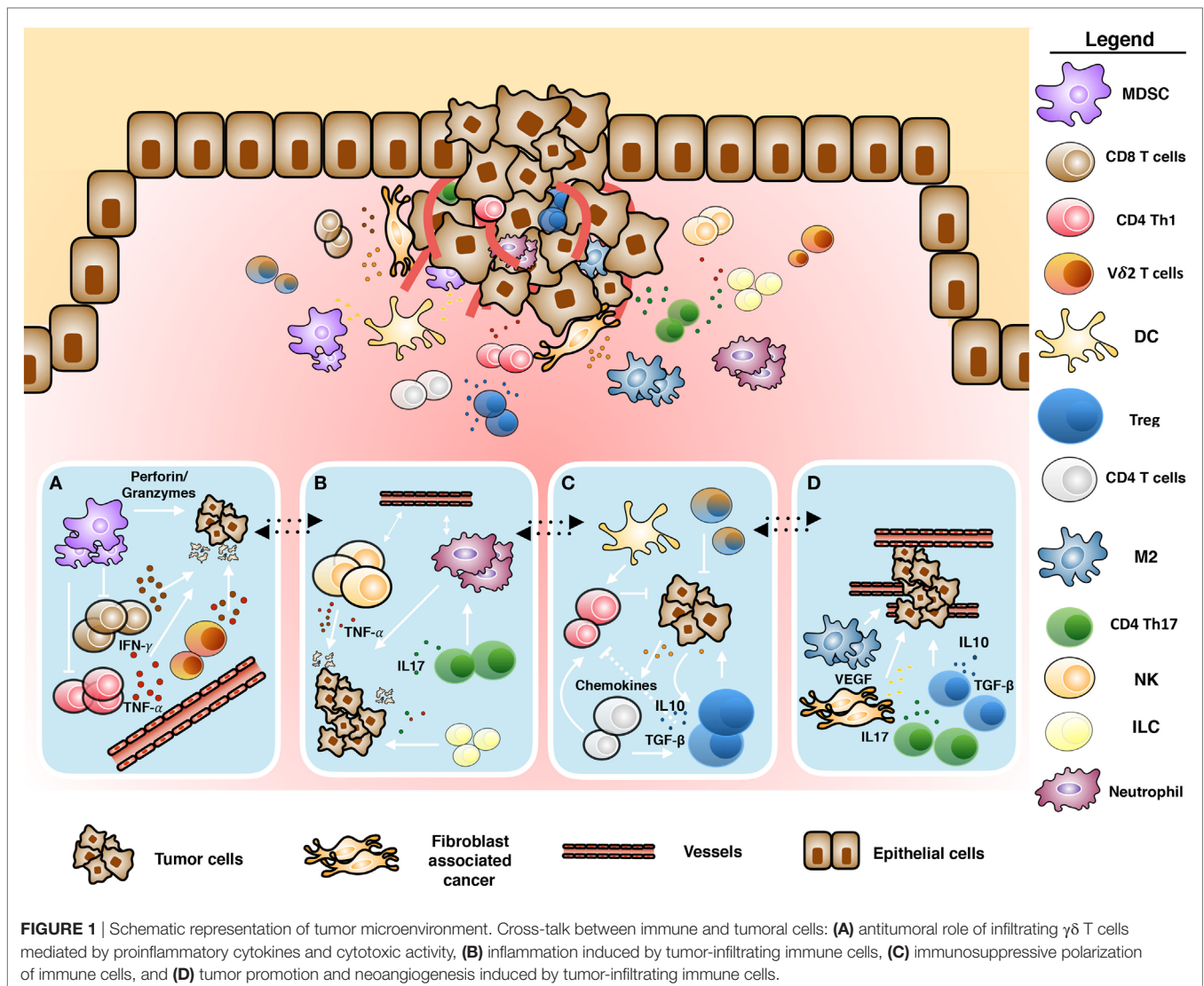
tumor evasion. Tumor escape from the host immune response is promoted by its ability to actively subvert antitumor immunity by interfering with cell development, differentiation, migration, and cytotoxicity or from host immunosuppression.

Cancer-associated fibroblasts (CAFs) (5–8), myeloid-derived suppressor cells (MDSC), regulatory T cells (Tregs), type-2 macrophages (M2 macrophages), tumor-associated neutrophils (9), inhibitory cytokines, and immune checkpoint receptors are components of the immune system acting together with cancer cells, responsible for the subversion of antitumor immunity (10, 11) (Figure 1). We will discuss any of these TME components in the following sections.

Cancer-Associated Fibroblasts

Cancer-associated fibroblasts are key players in the generation of an immunosuppressive TME and consequently in the promotion of tumor evasion from immune surveillance. It is well known that high presence of CAFs in the context of the tumor has been correlated with poor prognosis in several malignancies, including

lung (12) and colorectal cancers (13). The mechanisms used by CAF to induce tumoral growth and immune escape are different: (i) the production and the release of a large amount of immunosuppressive cytokines and growth factors, such as interleukin (IL)-6 and IL-8, transforming growth factor (TGF)-β, vascular endothelial growth factor (VEGF), and insulin-like growth factor, that directly or indirectly influence the behavior of malignant cells (14) and (ii) the direct suppressor activity on T cell proliferation through regulatory molecules and immunosuppressive cytokines released by fibroblasts. In addition, the analysis of the expression of costimulatory molecules on CAF have showed that CD80 and CD86 are not expressed by CAFs or normal fibroblast while B7H1 and B7DC, that bind programmed death-1 (PD-1) on activating T cells trasducing a negative signal inside the cells, are expressed by CAFs, but not by normal fibroblasts. In non-small cell lung cancer (NSCLC) patients, Nazareth et al. have demonstrated that CAFs constitutively express the B7H1 and B7DC molecules (15) and their blocking completely restores activation of tumor-associated T cells.



Moreover, CAFs shows a direct function on the orchestration of TME, inducing preferentially T cell apoptosis and Tregs; in fact the production of IL-6, CXCL8 are responsible for tumor-associated macrophage (TAM) polarization toward M2 macrophage polarization and functions during the differentiation of circulating monocytes to TAMs (16–19) while TGF- β induce the recruitment of macrophages at the tumor site, promoting the effective tumor evasion of the host immune system (20, 21).

Myeloid-Derived Suppressor Cells

Myeloid-derived suppressor cells play several protumoral functions promoting tumor cell survival, angiogenesis, invasion of tumor cells, and initiation of metastasis formation (22). Moreover, they can directly and indirectly skew the immune response toward immune suppressive counterparts, using different strategies:

- (1) MDSCs are able to inhibit T cell proliferation and activation by (i) the depletion of essential amino acids such as L-arginine, *via* arginase-1 (ARG)-dependent consumption, and L-cystein by sequestering, as demonstrated in renal adenocarcinoma (23, 24); (ii) the reduction of local tryptophan levels and production of cytotoxic metabolites by indoleamine 2,3 dioxygenase (IDO) (25); and (iii) the decrease of IL-2 production and inhibition of the IL-2 receptor signaling, by the reactive oxygen and nitrogen species NO, ROS, H₂O₂, and peroxynitrite, produced by arginase 1 (Arg-1), nitric oxide synthase (iNOS), and NADPH oxidase (NOX2) (26, 27).
- (2) MDSCs induce T cell apoptosis by several mechanisms, such as decrease of Bcl-2 expression and upregulation of FAS (CD95 ligand) in T cells, expression of galectin 9, which binds the inhibitory surface molecule TIM3 (T-cell immunoglobulin domain and mucin domain) and by expressing inhibitory surface molecules that alter T cell viability and trafficking.
- (3) MDSCs interfere with lymphocyte trafficking and viability through the downregulation of L-selectin (CD62L) on the surface of T cells, by expression of ADAM17 (disintegrin and metalloproteinase domain 17) and they also interrupt the migration of CD8⁺ T cells to tumor sites by peroxynitrite modification of CCL2 (28, 29).
- (4) MDSCs promote the differentiation of CD4⁺ T cells into Tregs both by direct cell–cell interactions (including CD40–CD40L interactions) and the production of several cytokines (such as IL-10 and TGF- β) (30), and polarize TAMs toward the M2 phenotype (31).

Regulatory T Cells

In the TME, classic Tregs, as defined by expression of CD4, CD25, cytotoxic T lymphocyte-associated antigen-4 (CTLA-4/CD152), the Forkhead Box P3 transcription factor (32, 33), and Helios (34), directly promote immune evasion and the formation of a pro-tumorigenic TME, and prompt the growth and metastasis of various malignant tumors such as lung, ovary, breast, and prostate (35). Tregs exert their immunosuppressive activity using different approaches: they release soluble inhibitory molecules as TGF- β , IL-10, adenosine, PGE₂, interfere with T effector cell activity and perforin/granzyme-mediated direct cytotoxicity by

sequestration of IL-2 (36) and directly inhibit effector T cells by virtue of immune checkpoints and inhibitory receptors (CTLA-4, PD-1, and LAG-3) (37, 38).

M2 Macrophages

In the TME, macrophages typically differentiate to the M2 phenotype under the action of Th2 cytokines (such as IL-4 and IL-13) and glucocorticoids. M2 macrophages promote tumor growth by suppressing immune response, remodeling the extracellular matrix, and stimulating neoangiogenesis (39). The majority of macrophages that are recruited at the tumor site, called TAMs, acquire features closely similar to the M2 phenotype due to different stimuli present in the TME, such as IL-4 and TGF- β , accompanied by reduced antitumoral activity (40). TAMs play an important role for lymphangiogenesis through the release of VEGF-C and VEGF-D *via* VEGFR3, and neo angiogenesis by VEGF, TNF- α , CXCL8, PDGF- β , MMP2, MMP7, and MMP9, both of mechanism are critical steps for tumor growth, invasion, and metastasis (41).

EFFECTS OF THE TME ON $\gamma\delta$ T CELLS

$\gamma\delta$ T cells are considered as good candidates for effective antitumor immunotherapeutical approaches for their unique features as (i) the recognition of antigens shared by a variety of stressed and tumor cells (42) in the absence of major histocompatibility complex (MHC) restriction and co-stimulation, (ii) the production of cytokines with well-known antitumor effect as IFN- γ and TNF- α with cytotoxic activity against tumor cells directly and indirectly *via* stimulating macrophages and DCs (43–45), and (iii) the potent cytotoxic activity *in vitro* and in xenograft models *in vivo* mediated by several different effector mechanisms (46–48). Moreover, $\gamma\delta$ T lymphocytes are recruited in several types of cancer (49) and analysis of expression signatures from a large number of human tumors identified them as the most significant favorable cancer-wide prognostic signature for outcome (50, 51). Moreover, data mining transcriptomes from a large cohort of colorectal cancer patients ($n = 585$) has revealed that the abundance of tumor-infiltrating $\gamma\delta$ T cells is related with the 5-year disease-free survival probability (51).

There are at least three major $\gamma\delta$ T cell subsets in humans that exhibit different V δ chain in the TCR: (1) the population expressing the V δ 2 gene paired with the V γ 9 chain (V γ 9V δ 2 T cells) represent the majority of circulating $\gamma\delta$ T cell population; (2) the population expressing the V δ 1 gene and different V γ chain, are confined to skin and mucosa; and (3) a third subset of V δ 3 cells are present in higher percentage in the liver (52).

Antigen recognition by $\gamma\delta$ T cells is a field of intense research. V δ 1 T cells recognize MHC class I-related molecule A (MICA), MHC class I-related molecule B (MICB), and UL16-binding proteins, expressed on stressed and tumor cells (53–55), glycolipid presented by MHC-related class Ib molecules CD1c and CD1d (56, 57), and unidentified ligands that engage natural cytotoxicity receptors (such as NKp30 and NKp44) (58). It is known that V δ 3 T cells can be activated by a glycolipid bound to CD1d molecules, but the real activating ligand are not yet defined (59).

Finally, V δ 2 T cells recognize non-peptidic phosphorylated intermediates of the non-mevalonate and mevalonate pathways of isoprenoid biosynthesis called phosphoantigens (PAGs), in the absence of processing, presentation, and MHC restriction (60).

Thus, there is a substantial interest in $\gamma\delta$ T cells in the context of immunotherapeutic strategies, considering the intracellular accumulation of isopentenylpyrophosphate leading to activation of V δ 2 T cells can be manipulated in the experimental assay and applied *in vitro* and *in vivo* cancer immunotherapy by two synthetic drugs, the synthetic PAG analog bromohydrin pyrophosphate and the aminobisphosphonate (n-BP) Zoledronate.

Nonetheless, recent flow cytometry or immunohistochemical studies of tumor-infiltrating $\gamma\delta$ T cells have failed to provide clear-cut evidence that they correlate positively or not with tumor growth, or even fail to correlate with any prognostic feature in different types of cancer, as reviewed in Ref. (61).

The dual role of V δ 2 T cells against tumor cells, either antitumoral or protumoral, could be related to the plasticity of $\gamma\delta$ T cells to differentiate into different functional subsets under precise polarizing conditions; thus, V δ 2 T cells may display Th1-, Th2- (62), Th9- (63), Th17- (64), or Treg-like (65) profiles and they can produce several immunosuppressive cytokines as TGF- β and IL-10. Recent papers indicate that IL-17 produced by Th17-like $\gamma\delta$ T cells can directly promote the proliferation and dissemination of tumor cells in breast cancer (66–68) and in the TME IL-17 regulates other cell population, such as MDSCs and macrophages influencing indirectly the tumor immunosurveillance (69). Treg-like V δ 2 T cells participate in the immunosuppressive TME either by the release of soluble molecules and by cell-to-cell contact *via* CD86/CTLA-4 and PD-L1/PD-1 interactions (70, 71). Recently Hu et al. have identified a novel $\gamma\delta$ Treg subset exhibiting CD39 expression that is polarized by TGF- β , with stronger immunosuppressive potential than CD4⁺ Tregs and that suppresses the activity of human lymphocytes in an adenosine-dependent manner (72).

This plasticity of $\gamma\delta$ T cells and the plausible idea that the TME drives their differentiation toward subsets equipped with immunosuppressive activities suggests the possibility that the TME can limit the effectiveness of the antitumor activity of $\gamma\delta$ T cells (73).

How does then the TME induce the polarization of $\gamma\delta$ T cells toward pro tumoral subsets?

Tumor cells and other cells of the TME produce inhibitory molecules which interfere with the proliferation and function of $\gamma\delta$ T cells, such as TGF- β (74), prostaglandin-E2, adenosine (75, 76), and soluble NKG2D ligands (such as MICA/B) (77).

We have recently investigated the nature of the immunosuppressive soluble molecules present in secretomes from two different human cancer types. We first analyzed secretomes obtained from cancer stem cells (CSC) and CAF of non-melanoma skin cancer patients, and found that the secretome of SCC patients contains cytokines (IL-6, IL-1 β , IL-23, and TGF- β) capable of polarizing the differentiation of $\gamma\delta$ 17 T cells (78, 79), confirming the transition from IFN- γ -producing to IL-17-producing $\gamma\delta$ T cells in the TME, during tumor progression observed in these patients. Whether or not these cytokines alone are responsible for the polarization toward $\gamma\delta$ 17 T cells or additional cells/factors are required is currently under investigation: accordingly, we

have recently found that activated plasmacytoid dendritic cells provide yet unknown signals which selectively induce $\gamma\delta$ 17 T cell polarization of V γ 9V δ 2 T cells (80), which was dominant over the PAG-induced IFN- γ response.

In a second study, we have also studied the immunosuppressive properties of secretomes of CAF and CSC obtained from CRC patients (51). Secretome from colon CSCs significantly inhibits proliferation and IFN- γ production by freshly $\gamma\delta$ T cells and also by $\gamma\delta$, CD4⁺, and CD8⁺ $\alpha\beta$ T cell lines and promotes production of IL-17. Conversely, secretome from CAF has limited suppressive ability and does not promote production of IL-17. Detailed analysis of CSC and CAF secretomes revealed only three cytokines differentially expressed by the inhibitory CSC secretome, but absent in the non-inhibitory CAF secretome, IL-8, IL-12, and VEGF. Because IL-12 does not have inhibitory activity on T cell proliferation and IFN- γ production, IL-8 and VEGF remain potential candidates of the immunosuppressive activities of the colon CSC secretome, which is probably not exerted directly on T cells but is rather mediated by other cell types like MDSCs, M2 macrophages, DCs, and Tregs (81, 82).

While the above findings indicate that soluble molecules present in the TME promote $\gamma\delta$ T polarization to subvert antitumor immune response, it is likely that additional signals like prostaglandins (83), kynurens (84), or potassium (85), are needed to achieve this effect.

Indeed, relating to the well-known ability of cancer cells to use inhibitory checkpoints to induce T cells apoptosis or anergy, V δ 2 T cells results not to be affected by this immunosuppressive mechanisms by the very low expression of PD-1 compared to conventional $\alpha\beta$ CD8 and CD4 T cells; a recent paper have demonstrated that upon 4 days of *in vitro* stimulation by Zoledronate and IL-2, V δ 2 T cells increase the expression of PD-1 but very rapidly decrease nearly to baseline (86) as well as TIGIT that is another negative checkpoint receptor (Hayday, unpublished results). Moreover, several suppressive cells in the TME can inhibit the proliferation and cytotoxic effect of $\gamma\delta$ T cells (87–90). For example, tumor cells promote $\gamma\delta$ T cells polarization toward a Treg phenotype, that obstacle antitumor immunity (73), contributing to the immunosuppressive microenvironment that is characteristic of most tumor cells as breast cancer (91). Deficient $\gamma\delta$ T cell functions have already been observed in various types of cancer, including hematological malignancies (92), liver, breast cancer (93), and HCC (94).

TARGETING TME FOR THERAPY

Cancer immunotherapy is a highly promising new cancer treatment, that enhances the host antitumor response, increasing the number of effector immune cells, reducing host immunosuppressive mechanisms, inducing tumor killing, and modulating immune checkpoints (93).

Better knowledge on how tumor cells escape immune response has been translated into innovative therapeutic strategies that redirect immune cells to tumors and restore their cytotoxic activity against tumor cells.

$\gamma\delta$ T cell immunotherapy, either by the use of *in vivo* expanded T cells by administration of compounds that activate them or

by the adoptive transfer of *ex vivo*-activated $\gamma\delta$ T cells, has been shown to be both feasible and safe (95).

However, there are technical and functional limitations to its use in cancer therapy; technical problems could be linked to the hyporesponsiveness of $\gamma\delta$ T cells in some patient or to the activation-induced $\gamma\delta$ T cell anergy (lack of $\gamma\delta$ T cell activation or expansion), while functional limitations could be related to the ability of *in vivo* or *in vitro*-expanded $\gamma\delta$ T cells to reach and infiltrate tumors and to defeat the immunosuppressive environment (90, 96). To overcome this limitations, several immunotherapeutic approaches have been studied (Figure 2), we will discuss in the following sections.

Inhibitory Immunological Checkpoint

Combination of $\gamma\delta$ T cell adoptive transfer with immune checkpoint inhibitors is a useful strategy to enhance the antitumor activity of these cells.

The cancer immunotherapy has obtained an important progress by the use of therapeutic antibodies to CTLA-4, PD-1, and

PD-L1 that antagonize immune checkpoints even though not all cancers respond to these antibody therapies. The pharmaceutical industries are involved in the development of new monoclonal antibodies that target B7H1 (PD-L1) (97, 98), considering that the blockade of B7H1 seems to induce durable tumor regression and prolonged disease stabilization in patients with advanced cancers in a phase I trial (99). V γ 9V δ 2 T cells express very low levels PD-1 compared to CD8 and CD4 T cells, with a peak at 4 days of *in vitro* activation with Zoledronate and IL-2 but it is not durable considering their rapid decrease upon 7 days reaching the baseline level [(86) and our unpublished data]. Beyond PD-1, many other immune checkpoint inhibitors as CTLA-4, IDO, VISTA, galectin-9, LAG-3, and TIM-3 should be investigated to improve $\gamma\delta$ T cell adoptive immunotherapy.

Chemotherapy

Some cytotoxic compounds, including doxorubicin and oxaliplatin, can trigger “immunogenic” cell death. These chemotherapeutic agents act on tumor cells in such a way that the host immune

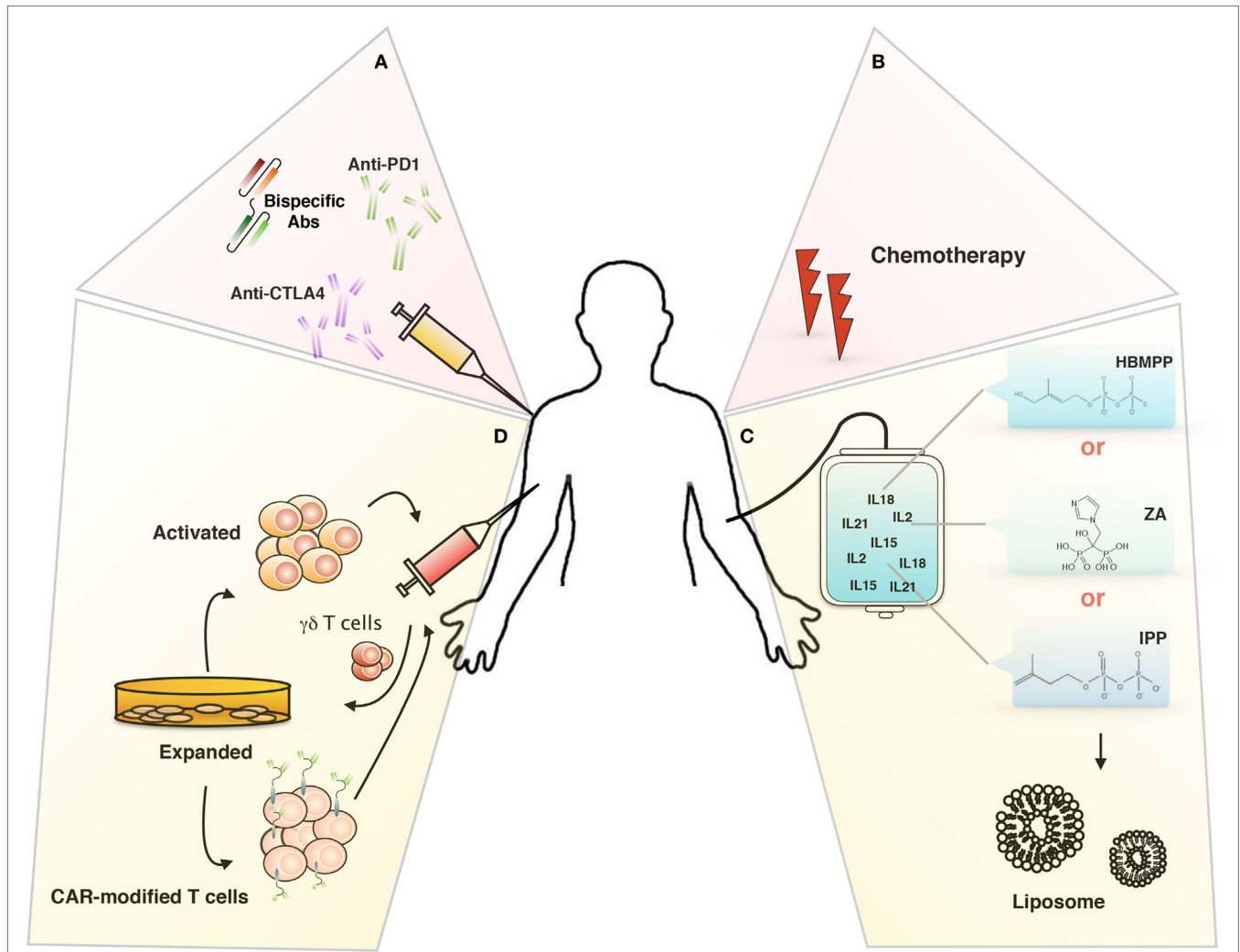


FIGURE 2 | Targeting tumor microenvironment for immunotherapy. Novel therapeutical approaches to improve $\gamma\delta$ T cells-based immunotherapy: (A) inhibitory immunological checkpoint and bispecific antibodies, (B) chemotherapy, (C) liposomes, and (D) chimeric antigen receptor-T cells (CAR-T).

system recognizes the dying tumor cell. A tumor-specific immune response occurs during cell death, which results in an antitumor immune response leading to tumor eradication and prevention of relapse. This immunogenic cell death can prevent immune tolerance to tumor cells and is a crucial component of treatment efficacy (100). $\gamma\delta$ T cells can be recruited to the tumor site after exposure to immunogenic chemotherapy and can contribute to its efficacy (67). *In vitro*, pre-treatment with low concentrations of chemotherapeutic agents (doxorubicin, cisplatin, etoposide, and vincristine) or even Zoledronate has been shown to sensitize tumor cells to killing by $\gamma\delta$ T cells with additive or synergistic effects (101–104).

Therefore, such new effective immunotherapeutic approaches include the use of chemotherapeutic drugs that induce immunogenic cell death (100) or non-specific immune stimulation by cytokines such as IL-2 and IFN- α , monoclonal antibodies, and other biomolecules. Novel regimens that combine these drugs with PAgS or with $\gamma\delta$ T cells are currently under investigation.

Liposomes

Aminobisphosphonates (N-BPs) have been shown to have anti-cancer activity both as a monotherapy and in combination with $\gamma\delta$ T cells. Due to the biodistribution of N-BPs *in vivo*, encapsulation of N-BPs in a nanof ormulation is a good technique for their use in the treatment of non-osseous tumors.

Liposomes, a closed bilayer phospholipid system, have been proposed as drug carriers in cancer therapy due to their ability to be preferentially taken up in tumors (105), to increase the therapeutic index of a drug and to reduce the side effects (106, 107). Moreover, nanoparticles such as liposomes pass very easily through the blood vessel, especially the neovessels inside the tumor that exhibit leaky endothelial lining. This effect is further reinforced by the lack of efficient lymphatic drainage of the tumor which causes liposomes to accumulate preferentially in the tumor area. This is known as enhanced permeation and retention effect (EPR) (108). Particles of 10–500 nm are thought to be able to extravasate into tumors as the pore sizes in the endothelial lining of leaky blood vessels in peripheral tumors are estimated to be 400–600 nm in diameter (109). However, particles with diameters <200 nm have been shown to be more effective at accumulating at tumor sites. This passive tumor targeting does not occur in all tumors and vessel leakiness may also be heterogeneous within a single tumor (110). Ligand-targeted or “active” targeting of liposomes may result in liposomes that are more selective to cancer cells, once passive targeting has taken place (107).

Toxic side effects have been observed *in vivo* when Zoledronate and Alendronate were encapsulated into liposomes even though liposome-encapsulated (L)-Alendronate was shown to be better tolerated than L-Zoledronate. Hodgins and colleagues have obtained promising results using *in vivo* L-Alendronate and $\gamma\delta$ T cells for the treatment of experimental metastatic lung tumors in immunocompromised mice (110).

To increase the uptake of L-Alendronate by receptor-mediated endocytosis *in vivo*, Hodgins and colleagues have targeted L-Alendronate to the $\alpha_v\beta_6$ integrin receptor, which is overexpressed on cancer cells but absent on normal cells; combining

the immunotherapy with $\gamma\delta$ T cells, they achieved substantial sensitization of $\alpha_v\beta_6$ positive cancer cells to $\gamma\delta$ T cells and a more efficient cell killing *in vitro*. Despite the promise of using targeted-L-Alendronate in a monotherapy regimen, no added advantage was observed in an experimental metastatic lung mice model by the combination of targeted-L-Alendronate and $\gamma\delta$ T cells (111).

Bispecific Antibodies

The immunotherapeutic approaches using monoclonal antibody-based targeted therapy have obtained promising results, improved by the generation of bispecific antibody (bsAb) (112) capable of targeting multiple molecules as a single agent, even though the positive effects are not time durable because of their toxicity and cellular resistance mechanisms.

In order to be able to recruit and activate all T-cell subsets, most bsAbs target CD3, but as a consequence a wide range of T cells, including CD4⁺, CD8⁺, $\gamma\delta$ T-cells, and also several immunoregulatory and immunosuppressive T-cell subsets are recruited.

Bispecific antibodies are very promising tools for $\gamma\delta$ T cell-based immunotherapy with a lot of advantages. There exist V δ 2 $\gamma\delta$ T cell and $\gamma\delta$ T cell (V δ 2 and V δ 1)-NK cell-specific bsAb which drastically enhance cytotoxic activity of these cells and did not recruit immunosuppressive $\gamma\delta$ T cells (113–116).

Recently, de Bruin and colleagues produced a new bispecific nanobody that simultaneously targets V γ 9V δ 2 T cells and EGFR. This compound has shown a potent ability to activate V γ 9V δ 2 T cells and to induce their antitumoral activity *in vitro* and in mouse xenograft model *in vivo* independently on the mutational status of the tumor. Thanks to the conserved monomorphic nature of the V γ 9V δ 2 TCR that permits a more selective cell recruitment, this immunotherapeutic approach could be used in several different clinical settings and could be applied to a large group of cancer patients (117).

Chimeric Antigen Receptor-T Cells (CAR-T)

Chimeric antigen receptors (CARs) redirect T cell specificity to tumor-associated antigens (TAAs), such as CD19, independently on the genetic (MHC) restriction.

Given the natural recruitment of $\gamma\delta$ T cells for the tumor site, their transduction with CARs might increase their cytotoxic activity without affecting their migratory capability toward the tumor and their polarization toward antigen-presenting cells phenotypes that prolong the intratumoral immune response (118).

$\gamma\delta$ T cells directly recognize unique TAAs, e.g., MICA/B, F1-ATPase, and PAgS, which are widely expressed by a variety of tumor cells (119) and thus, broad recognition of tumor cells and antitumor activities may be achieved by these T cells expressing a diverse $\gamma\delta$ TCR repertoire.

The question concerning the optimization of the immunotherapeutic approaches using costimulatory molecules remains open and the synergy between TCR $\gamma\delta$ and costimulatory molecules signals should be better explored for clinical expansion of V δ 2 T cells.

It is well known that $\gamma\delta$ T cells express a series of costimulatory molecules such as CD27, CD28, and 4-1BB (CD137) that increase

their activation and effector function. Ribot et al. showed that CD28 is constitutively expressed on $\gamma\delta$ T cells and play a role on the survival and proliferation *via* IL-2 production (120). deBarros and colleagues have shown the key role of CD70 molecule (CD27 ligand) on the *in vitro* expansion of V γ 9V δ 2 T cell by promoting the upregulation of Cyclin D2 and the anti-apoptotic gene regulator Bcl2a1, and on the effector function by the production of high levels of IFN- γ (121). Another costimulatory molecule investigated on V γ 9V δ 2 T cells was CD137L that is expressed at high levels when cells are activated and act as a ligand for CD137 on T and NK cells (122).

Capsomidis et al. have produced a new CAR by GD2-targeting, easily trasduced by both V δ 1 and V δ 2 subsets; the transduced cells have shown an increase cytotoxicity activity toward GD2-expressing cancer cell lines, a stable ability to migrate in tumor cells, take up tumor antigens and cross-present the processed peptide to responder $\alpha\beta$ T lymphocytes (118).

Although these engineered immune cells have made remarkable success in the treatment of patients with hematologic malignancies, the therapeutic efficacy in solid tumors has been limited because of the complexity and the heterogeneity of TME.

CONCLUSION

Recent advances in cancer immunotherapy have revolutionized treatment for a number of cancers. By targeting checkpoint receptors, durable remissions have been achieved in patients with advanced metastatic melanoma, NSCLC, bladder cancer, and kidney cancer, that otherwise would have had little chance of survival with conventional chemotherapies or targeted therapies. Similarly,

CAR-T, bearing receptors specific for CD19 have successfully treated patients with relapsing B cell acute lymphoblastic leukemia and diffuse large B cell lymphoma. However, both these treatments have limitations. Therefore, additional types of immunotherapy are needed to achieve the full potential of cancer immunotherapy. Harnessing $\gamma\delta$ T cells toward tumor cells remains a fascinating immunotherapeutical approach, considering that their activation is not dependent on peptides presented by MHC proteins and is, therefore, MHC unrestricted. Finally, the efficacy of adoptive immunotherapy with V δ 2 T cells is independent of the mutational status of the tumor (123, 124), a limit for the efficacy of checkpoint blockade, and consequently could be also applied to patients with cancers that have low numbers of mutations, such as many of the pediatric cancers.

The well-known plasticity of $\gamma\delta$ T cells upon interaction with TME limits the effectiveness of this therapy, even though the overall interactions of the cells in TME and their rapid modifications induced by the natural story of the tumor and of the host remain an enigmatic story. A better comprehension of these mechanisms will be useful to formulate really efficient and durable therapeutic strategies that combine different approaches and could restore antitumor immune responses, overcome tumor escape, and overcome tumor-induced immune deviation to enable the host immune system to more effectively control tumor growth.

AUTHOR CONTRIBUTIONS

SM and FD wrote the paper. ELP prepared the figures. ELP, GP, AMC, NC, and GS contributed to the discussion of the draft.

REFERENCES

- Dunn GP, Koebel CM, Schreiber RD. Interferons, immunity and cancer immunoeediting. *Nat Rev Immunol* (2006) 6:836–48. doi:10.1038/nri1961
- Burnet M. Cancer: a biological approach. III. Viruses associated with neoplastic conditions. IV. Practical applications. *Br Med J* (1957) 1:841–7. doi:10.1136/bmj.1.5023.841
- Galon J, Costes A, Sanchez-Cabo F, Kirilovsky A, Mlecnik B, Lagorce-Pagès C, et al. Type, density, and location of immune cells within human colorectal tumors predict clinical outcome. *Science* (2006) 313:1960–4. doi:10.1126/science.1129139
- Pagès F, Berger A, Camus M, Sanchez-Cabo F, Costes A, Molitor R, et al. Effector memory T cells, early metastasis, and survival in colorectal cancer. *N Engl J Med* (2005) 353:2654–66. doi:10.1056/NEJMoa051424
- Elenbaas B, Weinberg RA. Heterotypic signaling between epithelial tumor cells and fibroblasts in carcinoma formation. *Exp Cell Res* (2001) 264:169–84. doi:10.1006/excr.2000.5133
- Tlsty TD, Hein PW. Know thy neighbor: stromal cells can contribute oncogenic signals. *Curr Opin Genet Dev* (2001) 11:54–9. doi:10.1016/S0959-437X(00)00156-8
- Olumi AF, Grossfeld GD, Hayward SW, Carroll PR, Tlsty TD, Cunha GR. Carcinoma-associated fibroblasts direct tumor progression of initiated human prostatic epithelium. *Cancer Res* (1999) 59:5002–11.
- Kiaris H, Chatzistamou I, Kalofoutis C, Koutselini H, Piperi C, Kalofoutis A. Tumour-stroma interactions in carcinogenesis basic aspects and perspectives. *Mol Cell Biochem* (2004) 261:117–22. doi:10.1023/B:MCBI.0000028746.54447.6c
- Galdiero MR, Varricchi G, Loffredo S, Mantovani A, Marone G. Roles of neutrophils in cancer growth and progression. *J Leukoc Biol* (2018) 103(3):457–64. doi:10.1002/JLB.3MR0717-292R
- Locati M, Mantovani A, Sica A. Macrophage activation and polarization as an adaptive component of innate immunity. *Adv Immunol* (2013) 120:163–84. doi:10.1016/B978-0-12-417028-5.00006-5
- Mager LF, Wasmer MH, Rau TT, Krebs P. Cytokine-induced modulation of colorectal cancer. *Front Oncol* (2016) 6:96. doi:10.3389/fonc.2016.00096
- Ito M, Ishii G, Nagai K, Maeda R, Nakano Y, Ochiai A. Prognostic impact of cancer-associated stromal cells in patients with stage I lung adenocarcinoma. *Chest* (2012) 142:151–8. doi:10.1378/chest.11-2458
- Herrera M, Herrera A, Domínguez G, Silva J, García V, García JM, et al. Cancer-associated fibroblast and M2 macrophage markers together predict outcome in colorectal cancer patients. *Cancer Sci* (2013) 104:437–44. doi:10.1111/cas.12096
- Zhang J, Liu J. Tumor stroma as targets for cancer therapy. *Pharmacol Ther* (2013) 137:200–15. doi:10.1016/j.pharmthera.2012.10.003
- Nazareth MR, Broderick L, Simpson-Abelson MR, Kelleher RJ Jr, Yokota SJ, Bankert RB. Characterization of human lung tumor-associated fibroblasts and their ability to modulate the activation of tumor-associated T cells. *J Immunol* (2007) 178:5552–62. doi:10.4049/jimmunol.178.9.5552
- Takahashi H, Sakakura K, Kawabata-Iwakawa R, Rokudai S, Toyoda M, Nishiyama M, et al. Immunosuppressive activity of cancer-associated fibroblasts in head and neck squamous cell carcinoma. *Cancer Immunol Immunother* (2015) 64:1407–17. doi:10.1007/s00262-015-1742-0
- Paunescu V, Bojin FM, Tatu CA, Gavriluc OI, Rosca A, Gruia AT, et al. Tumour-associated fibroblasts and mesenchymal stem cells: more similarities than differences. *J Cell Mol Med* (2011) 15:635–46. doi:10.1111/j.1582-4934.2010.01044.x
- Kim JH, Oh SH, Kim EJ, Park SJ, Hong SP, Cheon JH, et al. The role of myofibroblasts in upregulation of S100A8 and S100A9 and the differentiation of myeloid cells in the colorectal cancer microenvironment. *Biochem Biophys Res Commun* (2012) 423:60–6. doi:10.1016/j.bbrc.2012.05.081

19. Heusinkveld M, de Vos van Steenwijk PJ, Goedemans R, Ramwadhoebe TH, Gorter A, Welters MJ, et al. M2 macrophages induced by prostaglandin E2 and IL-6 from cervical carcinoma are switched to activated M1 macrophages by CD4+ Th1 cells. *J Immunol* (2011) 187:1157–65. doi:10.4049/jimmunol.1100889
20. Byrne SN, Knox MC, Halliday GM. TGF beta is responsible for skin tumour infiltration by macrophages enabling the tumours to escape immune destruction. *Immunol Cell Biol* (2008) 86:92–7. doi:10.1038/sj.icb.7100116
21. Kim JS, Kim JG, Moon MY, Jeon CY, Won HY, Kim HJ, et al. Transforming growth factor-beta1 regulates macrophage migration via RhoA. *Blood* (2006) 108:1821–9. doi:10.1182/blood-2005-10-009191
22. Baniyash M. Myeloid-derived suppressor cells as intruders and targets: clinical implications in cancer therapy. *Cancer Immunol Immunother* (2016) 65(7):857–67. doi:10.1007/s00262-016-1849-y
23. Zea AH, Rodriguez PC, Atkins MB, Hernandez C, Signoretti S, Zabaleta J, et al. Arginase-producing myeloid suppressor cells in renal cell carcinoma patients: a mechanism of tumor evasion. *Cancer Res* (2005) 65(8):3044–8. doi:10.1158/0008-5472.CAN-04-4505
24. Bronte V, Zanovello P. Regulation of immune responses by L-arginine metabolism. *Nat Rev Immunol* (2005) 5(8):641–54. doi:10.1038/nri1668
25. Yu J, Du W, Yan F, Wang Y, Li H, Cao S, et al. Myeloid-derived suppressor cells suppress antitumor immune responses through IDO expression and correlate with lymph node metastasis in patients with breast cancer. *J Immunol* (2013) 190(7):3783–97. doi:10.4049/jimmunol.1201449
26. Gehad AE, Lichtman MK, Schmults CD, Teague JE, Calarese AW, Jiang Y, et al. Nitric oxide-producing myeloid-derived suppressor cells inhibit vascular E-selectin expression in human squamous cell carcinomas. *J Invest Dermatol* (2012) 132(11):2642–51. doi:10.1038/jid.2012.190
27. Nagaraj S, Gabrilovich DI. Tumor escape mechanism governed by myeloid-derived suppressor cells. *Cancer Res* (2008) 68(8):2561–3. doi:10.1158/0008-5472.CAN-07-6229
28. Molon B, Ugel S, Del Pozzo F, Soldani C, Zilio S, Avella D, et al. Chemokine nitration prevents intratumoral infiltration of antigen-specific T cells. *J Exp Med* (2011) 208(10):1949–62. doi:10.1084/jem.20101956
29. Ostrand-Rosenberg S, Sinha P, Beury DW, Clements VK. Cross-talk between myeloid-derived suppressor cells (MDSC), macrophages, and dendritic cells enhances tumor-induced immune suppression. *Semin Cancer Biol* (2012) 22(4):275–81. doi:10.1016/j.semcancer.2012.01.011
30. Schlecker E, Stojanovic A, Eisen C, Quack C, Falk CS, Umansky V, et al. Tumor-infiltrating monocytic myeloid-derived suppressor cells mediate CCR5-dependent recruitment of regulatory T cells favoring tumor growth. *J Immunol* (2012) 189(12):5602–11. doi:10.4049/jimmunol.1201018
31. Sinha P, Clements VK, Bunt SK, Albelda SM, Ostrand-Rosenberg S. Cross-talk between myeloid-derived suppressor cells and macrophages subverts tumor immunity toward a type 2 response. *J Immunol* (2007) 179(2):977–83. doi:10.4049/jimmunol.179.2.977
32. d'Hennezel E, Piccirillo CA. Analysis of human FOXP3+ Treg cells phenotype and function. *Methods Mol Biol* (2011) 707:199–218. doi:10.1007/978-1-61737-979-6_13
33. Fontenot JD, Dooley JL, Farr AG, Rudensky AY. Developmental regulation of Foxp3 expression during ontogeny. *J Exp Med* (2005) 202(7):901–6. doi:10.1084/jem.20050784
34. Thornton AM, Korty PE, Tran DQ, Wohlfert EA, Murray PE, Belkaid Y, et al. Expression of Helios, an Ikaros transcription factor family member, differentiates thymic-derived from peripherally induced Foxp3+ T regulatory cells. *J Immunol* (2010) 184:3433–41. doi:10.4049/jimmunol.0904028
35. Beyer M, Schultze JL. Regulatory T cells in cancer. *Blood* (2006) 108(3):804–11. doi:10.1182/blood-2006-02-002774
36. Halvorsen EC, Mahmoud SM, Bennewith KL. Emerging roles of regulatory T cells in tumour progression and metastasis. *Cancer Metastasis Rev* (2014) 33(4):1025–41. doi:10.1007/s10555-014-9529-x
37. Francisco LM, Salinas VH, Brown KE, Vanguri VK, Freeman GJ, Kuchroo VK, et al. PD-L1 regulates the development, maintenance, and function of induce regulatory T cells. *J Exp Med* (2009) 206(13):3015–29. doi:10.1084/jem.20090847
38. Vignali D. How many mechanisms do regulatory T cells need? *Eur J Immunol* (2008) 38(4):908–11. doi:10.1002/eji.200738114
39. Mantovani A, Locati M. Tumor-associated macrophages as a paradigm of macrophage plasticity, diversity, and polarization: lessons and open questions. *Arterioscler Thromb Vasc Biol* (2013) 33(7):1478–83. doi:10.1161/ATVBAHA.113.300168
40. Sica A, Mantovani A. Macrophage plasticity and polarization: in vivo veritas. *J Clin Invest* (2012) 122(3):787–95. doi:10.1172/JCI59643
41. Soave DF, Miguel MP, Tomé FD, de Menezes LB, Nagib PR, Celes MR. The fate of the tumor in the hands of microenvironment: role of TAMs and mTOR pathway. *Mediators Inflamm* (2016) 2016:8910520. doi:10.1155/2016/8910520
42. Vantourout P, Hayday A. Six-of-the-best: unique contributions of $\gamma\delta$ T cells to immunology. *Nat Rev Immunol* (2013) 13:88–100. doi:10.1038/nri3384
43. Ismaili J, Olszlagers V, Poupot R, Fournie JJ, Goldman M. Human $\gamma\delta$ T cells induce dendritic cell maturation. *Clin Immunol* (2002) 103:296–302. doi:10.1006/clim.2002.5218
44. Conti L, Casetti R, Cardone M, Varano B, Martino A, Belardelli F, et al. Reciprocal activating interaction between dendritic cells and pamidronate-stimulated $\gamma\delta$ T cells: role of CD86 and inflammatory cytokines. *J Immunol* (2005) 174:252–60. doi:10.4049/jimmunol.174.1.252
45. Devilder MC, Mailliet S, Bouyge-Moreau I, Donnadieu E, Bonneville M, Scotet E. Potentiation of antigen-stimulated V γ 9V δ 2 T cell cytokine production by immature dendritic cells (DC) and reciprocal effect on DC maturation. *J Immunol* (2006) 176:1386–93. doi:10.4049/jimmunol.176.3.1386
46. Dieli F, Troye-Blomberg M, Ivanyi J, Fournie M, Bonneville MA, Peyrat G, et al. Granulysin dependent killing of intracellular and extracellular *Mycobacterium tuberculosis* by V γ 9V δ 2 T lymphocytes. *J Infect Dis* (2001) 184:1082–5. doi:10.1086/323600
47. Vermijlen D, Ellis P, Langford C, Klein A, Engel R, Willimann K, et al. Distinct cytokine driven responses of activated blood $\gamma\delta$ T cells: insights into unconventional T cell pleiotropy. *J Immunol* (2007) 178:4304–14. doi:10.4049/jimmunol.178.7.4304
48. Dalton JE, Howell G, Pearson J, Scott P, Carding SR. Fas-Fas ligand interactions are essential for the binding to and killing of activated macrophages by $\gamma\delta$ T cells. *J Immunol* (2004) 173:3660–7. doi:10.4049/jimmunol.173.6.3660
49. Tosolini M, Pont F, Poupot M, Vergez F, Nicolaou-Travers ML, Vermijlen D, et al. Assessment of tumor-infiltrating TCR V γ 9V δ 2 $\gamma\delta$ lymphocyte abundance by deconvolution of human cancers microarrays. *Oncoimmunology* (2017) 6:e1284723. doi:10.1080/2162402X.2017.1284723
50. Gentles AJ, Newman AM, Liu CL, Bratman SV, Feng W, Kim D, et al. The prognostic landscape of genes and infiltrating immune cells across human cancers. *Nat Med* (2015) 21:938–45. doi:10.1038/nm.3909
51. Meraviglia S, Lo Presti E, Tosolini M, La Mendola C, Orlando V, Todaro M, et al. Distinctive features of tumor-infiltrating $\gamma\delta$ T lymphocytes in human colorectal cancer. *Oncoimmunology* (2017) 6(10):e1347742. doi:10.1080/2162402X.2017.1347742
52. Hayday AC. $\gamma\delta$ T cells: a right time and a right place for a conserved third way of protection. *Annu Rev Immunol* (2000) 18:975–1026. doi:10.1146/annurev.immunol.18.1.975
53. Xu B, Pizarro JC, Holmes MA, McBeth C, Groh V, Spies T, et al. Crystal structure of a $\gamma\delta$ T cell receptor specific for the human MHC class I homolog MICA. *Proc Natl Acad Sci U S A* (2011) 108:2414–9. doi:10.1073/pnas.1015433108
54. Groh V, Rhinehart R, Secrist H, Bauer S, Grabstein KH, Spies T. Broad tumor-associated expression and recognition by tumor-derived $\gamma\delta$ T cells of MICA and MICB. *Proc Natl Acad Sci U S A* (1999) 96:6879–84. doi:10.1073/pnas.96.12.6879
55. Poggi A, Venturino C, Catellani S, Clavio M, Miglino M, Gobbi M, et al. V δ 1 T lymphocytes from B-CLL patients recognize ULBP3 expressed on leukemic B cells and up-regulated by trans-retinoic acid. *Cancer Res* (2004) 64:9172–9. doi:10.1158/0008-5472.CAN-04-2417
56. Uldrich AP, Le Nours J, Pellicci DG, Gherardin NA, McPherson KG, Lim RT, et al. CD1d lipid antigen recognition by the $\gamma\delta$ TCR. *Nat Immunol* (2013) 14:1137–45. doi:10.1038/ni.2713
57. Luoma AM, Castro CD, Mayassi T, Bembinster LA, Bai L, Picard D, et al. Crystal structure of V δ 1 T cell receptor in complex with CD1d sulfatide shows MHC like recognition of a self-lipid by human $\gamma\delta$ T cells. *Immunity* (2013) 39:1032–42. doi:10.1016/j.immuni.2013.11.001
58. Hudspeth K, Silva-Santos B, Mavilio D. Natural cytotoxicity receptors: broader expression patterns and functions in innate and adaptive immune cells. *Front Immunol* (2013) 4:69. doi:10.3389/fimmu.2013.00069
59. Mangan BA, Dunne MR, O'Reilly VP, Dunne PJ, Exley MA, O'Shea D, et al. CD1d restriction and Th1/Th2/Th17 cytokine secretion by human V δ 3 T cells. *J Immunol* (2013) 191:30–4. doi:10.4049/jimmunol.1300121

60. Tanaka Y, Morita CT, Tanaka Y, Nieves E, Brenner MB, Bloom BR. Natural and synthetic non-peptide antigens recognized by human $\gamma\delta$ T cells. *Nature* (1995) 75:155–8. doi:10.1038/375155a0
61. Lo Presti E, Di Mitri R, Pizzolato G, Mocciano F, Dieli F, Meraviglia S. $\gamma\delta$ cells and tumor microenvironment: a helpful or a dangerous liason? *J Leukoc Biol* (2018) 103:485–92. doi:10.1002/JLB.5MR0717-275RR
62. Wesch D, Glatzel A, Kabelitz D. Differentiation of resting human peripheral blood $\gamma\delta$ T cells toward Th1- or Th2-phenotype. *Cell Immunol* (2001) 212:110–7. doi:10.1006/cimm.2001.1850
63. Peters C, Häsler R, Wesch D, Kabelitz D. Human V δ 2 T cells are a major source of interleukin-9. *Proc Natl Acad Sci U S A* (2016) 113:12520–5. doi:10.1073/pnas.1607136113
64. Ness-Schwickerath KJ, Jin C, Morita CT. Cytokine requirements for the differentiation and expansion of IL-17A- and IL-22-producing human V γ 2V δ 2 T cells. *J Immunol* (2010) 184:7268–80. doi:10.4049/jimmunol.1000600
65. Peters C, Kabelitz D, Wesch D. Regulatory functions of $\gamma\delta$ T cells. *Cell Mol Life Sci* (2018) 75:2125–35. doi:10.1007/s00018-018-2788-x
66. Murugaiyan G, Saha B. Protumor vs antitumor functions of IL-17. *J Immunol* (2009) 183(7):4169–75. doi:10.4049/jimmunol.0901017
67. Ma Y, Aymeric L, Locher C, Mattarollo SR, Delahaye NF, Pereira P, et al. Contribution of IL-17-producing gamma delta T cells to the efficacy of anticancer chemotherapy. *J Exp Med* (2011) 208(3):491–503. doi:10.1084/jem.20100269
68. Chen WC, Lai YH, Chen HY, Guo HR, Su IJ, Chen HH. Interleukin-17-producing cell infiltration in the breast cancer tumour microenvironment is a poor prognostic factor. *Histopathology* (2013) 63(2):225–33. doi:10.1111/his.12156
69. Wu P, Wu D, Ni C, Ye J, Chen W, Hu G, et al. GammadeltaT17 cells promote the accumulation and expansion of myeloid-derived suppressor cells in human colorectal cancer. *Immunity* (2014) 40(5):785–800. doi:10.1016/j.immuni.2014.03.013
70. Casetti R, Agrati C, Wallace M, Sacchi A, Martini F, Martino A, et al. Cutting edge: TGF-beta1 and IL-15 induce FOXP3+ gammadelta regulatory T cells in the presence of antigen stimulation. *J Immunol* (2009) 183(6):3574–7. doi:10.4049/jimmunol.0901334
71. Peters C, Oberg HH, Kabelitz D, Wesch D. Phenotype and regulation of immunosuppressive V δ 2-expressing $\gamma\delta$ T cells. *Cell Mol Life Sci* (2014) 71:1943–60. doi:10.1007/s00018-013-1467-1
72. Hu G, Wu P, Cheng P, Zhang Z, Wang Z, Yu X, et al. Tumor-infiltrating CD39+ $\gamma\delta$ Tregs are novel immunosuppressive T cells in human colorectal cancer. *Oncoimmunology* (2017) 6(2):e1277305. doi:10.1080/2162402X.2016.1277305
73. Ye J, Ma C, Hsueh EC, Eickhoff CS, Zhang Y, Varvares MA, et al. Tumor-derived gammadelta regulatory T cells suppress innate and adaptive immunity through the induction of immunosenescence. *J Immunol* (2013) 190:2403–14. doi:10.4049/jimmunol.1202369
74. Li MO, Wan YY, Sanjabi S, Robertson AK, Flavell RA. Transforming growth factor-beta regulation of immune responses. *Annu Rev Immunol* (2006) 24:99–146. doi:10.1146/annurev.immunol.24.021605.090737
75. Gonnermann D, Oberg HH, Kellner C, Peipp M, Sebels S, Kabelitz D, et al. Resistance of cyclooxygenase-2 expressing pancreatic ductal adenocarcinoma cells against $\gamma\delta$ T cell cytotoxicity. *Oncoimmunology* (2015) 4(3):e988460. doi:10.4161/2162402X.2014.988460
76. Martinet L, Fleury-Cappelleso S, Gadelorge M, Dietrich G, Bourin P, Fournie JJ. A regulatory cross-talk between V γ 9V δ 2 T lymphocytes and mesenchymal stem cells. *Eur J Immunol* (2009) 39:752–62. doi:10.1002/eji.200838812
77. Marten A, von Lilienfeld-Toal M, Buchler W, Schmidt J. Soluble MIC is elevated in the serum of patients with pancreatic carcinoma diminishing gammadelta T cell cytotoxicity. *Int J Cancer* (2006) 119:2359–65. doi:10.1002/ijc.22186
78. Lo Presti E, Toia F, Oieni S, Buccheri S, Turdo A, Mangiapane LR, et al. Squamous cell tumors recruit $\gamma\delta$ T cells producing either IL17 or IFN γ depending on the tumor stage. *Cancer Immunol Res* (2017) 5:397–407. doi:10.1158/2326-6066.CIR-16-0348
79. Caccamo N, La Mendola C, Orlando V, Meraviglia S, Todaro M, Stassi G, et al. Differentiation, phenotype, and function of interleukin-17-producing human V γ 9V δ 2 T cells. *Blood* (2011) 118(1):129–38. doi:10.1182/blood-2011-01-331298
80. Lo Presti E, Caccamo N, Orlando V, Dieli F, Meraviglia S. Activation and selective IL-17 response of human V γ 9V δ 2 T lymphocytes by TLR-activated plasmacytoid dendritic cells. *Oncotarget* (2016) 7(38):60896–905. doi:10.18632/oncotarget.11755
81. Liu Q, Li A, Tian Y, Wu JD, Liu Y, Li T. The CXCL8-CXCR1/2 pathways in cancer. *Cytokine Growth Factor Rev* (2016) 31:61–71. doi:10.1016/j.cytogfr.2016.08.002
82. Voron T, Marcheteau E, Pernet S, Colussi O, Tartour E, Taieb J, et al. Control of the immune response by pro-angiogenic factors. *Front Oncol* (2014) 4:70. doi:10.3389/fonc.2014.00070
83. Basingab FS, Ahmadi M, Morgan DJ. IFN γ -dependent interactions between ICAM-1 and LFA-1 counteract prostaglandin E2-mediated inhibition of antitumor CTL responses. *Cancer Immunol Res* (2016) 4(5):400–11. doi:10.1158/2326-6066.CIR-15-0146
84. Zhai L, Spranger S, Binder DC, Gritsina G, Lauing KL, Giles FJ, et al. Molecular pathways: targeting IDO1 and other tryptophan dioxygenases for cancer immunotherapy. *Clin Cancer Res* (2015) 21(24):5427–33. doi:10.1158/1078-0432.CCR-15-0420
85. Eil R, Vodnala SK, Clever D, Klebanoff CA, Sukumar M, Pan JH, et al. Ionic immune suppression within the tumour microenvironment limits T cell effector function. *Nature* (2016) 537:539–43. doi:10.1038/nature19364
86. Zumwalde NA, Sharma A, Xu X, Ma S, Schneider CL, Romero-Masters JC, et al. Adoptively transferred V γ 9V δ 2 T cells show potent antitumor effects in a preclinical B cell lymphomagenesis model. *JCI Insight* (2017) 2:93179. doi:10.1172/jci.insight.93179
87. Kunzmann V, Kimmel B, Herrmann T, Einsele H, Wilhelm M. Inhibition of phosphoantigen-mediated gammadelta T-cell proliferation by CD4+ CD25+ FoxP3+ regulatory T cells. *Immunology* (2009) 126:256–67. doi:10.1111/j.1365-2567.2008.02894.x
88. Kobayashi H, Tanaka Y, Yagi J, Osaka Y, Nakazawa H, Uchiyama T. Safety profile and anti-tumor effects of adoptive immunotherapy using gamma-delta T cells against advanced renal cell carcinoma: a pilot study. *Cancer Immunol Immunother* (2007) 56:469–76. doi:10.1007/s00262-006-0199-6
89. Capietto AH, Martinet L, Fournie JJ. How tumors might withstand gammadelta T-cell attack. *Cell Mol Life Sci* (2011) 68:2433–42. doi:10.1007/s00018-011-0705-7
90. Martinet L, Poupot R, Fournie JJ. Pitfalls on the roadmap to gammadelta T cell-based cancer immunotherapies. *Immunol Lett* (2009) 124:1–8. doi:10.1016/j.imlet.2009.03.011
91. Ye J, Ma C, Wang F, Hsueh EC, Toth K, Huang Y, et al. Specific recruitment of gammadelta regulatory T cells in human breast cancer. *Cancer Res* (2013) 73:6137–48. doi:10.1158/0008-5472.CAN-13-0348
92. Rey J, Veuillen C, Vey N, Bouabdallah R, Olive D. Natural killer and gamma-delta T cells in haematological malignancies: enhancing the immune effectors. *Trends Mol Med* (2009) 15:275–84. doi:10.1016/j.molmed.2009.04.005
93. Gaafar A, Aljurf MD, Al-Sulaiman A, Iqniebi A, Manogaran PS, Mohamed GE, et al. Defective gammadelta T-cell function and granzyme B gene polymorphism in a cohort of newly diagnosed breast cancer patients. *Exp Hematol* (2009) 37:838–48. doi:10.1016/j.exphem.2009.04.003
94. Yi Y, He HW, Wang JX, Cai XY, Li YW, Zhou J, et al. The functional impairment of HCC-infiltrating gammadelta T cells, partially mediated by regulatory T cells in a TGFbeta- and IL-10-dependent manner. *J Hepatol* (2013) 58:977–83. doi:10.1016/j.jhep.2012.12.015
95. Fournie JJ, Sicard H, Poupot M, Bezombes C, Blanc A, Romagne F, et al. What lessons can be learned from gammadelta T cell-based cancer immunotherapy trials? *Cell Mol Immunol* (2013) 10:35–41. doi:10.1038/cmi.2012.39
96. Stanculeanu DL, Daniela Z, Lazescu A, Bunghez R, Anghel R. Development of new immunotherapy treatments in different cancer types. *J Med Life* (2016) 9(3):240–8.
97. Kyi C, Postow MA. Checkpoint blocking antibodies in cancer immunotherapy. *FEBS Lett* (2014) 588:368–76. doi:10.1016/j.febslet.2013.10.015
98. Hamid O, Carvajal RD. Anti-programmed death-1 and anti-programmed death-ligand 1 antibodies in cancer therapy. *Expert Opin Biol Ther* (2013) 13:847–61. doi:10.1517/14712598.2013.770836
99. Brahmer JR, Tykodi SS, Chow LQ, Hwu WJ, Topalian SL, Hwu P, et al. Safety and activity of anti-PD-L1 antibody in patients with advanced cancer. *N Engl J Med* (2012) 366:2455–65. doi:10.1056/NEJMoa1200694
100. Green DR, Ferguson T, Zitvogel L, Kroemer G. Immunogenic and tolerogenic cell death. *Nat Rev Immunol* (2009) 9:353–63. doi:10.1038/nri2545

101. Mattarollo SR, Kenna T, Nieda M, Nicol AJ. Chemotherapy and zoledronate sensitize solid tumour cells to Vgamma9Vdelta2 T cell cytotoxicity. *Cancer Immunol Immunother* (2007) 56:1285–97. doi:10.1007/s00262-007-0279-2
102. Todaro M, Orlando V, Cicero G, Caccamo N, Meraviglia S, Stassi G, et al. Chemotherapy sensitizes colon cancer initiating cells to V γ 9V δ 2 T cell-mediated cytotoxicity. *PLoS One* (2013) 8:e65145. doi:10.1371/journal.pone.0065145
103. Todaro M, Meraviglia S, Caccamo N, Stassi G, Dieli F. Combining conventional chemotherapy and $\gamma\delta$ T cell-based immunotherapy to target cancer-initiating cells. *Oncimmunology* (2013) 2:e25821. doi:10.4161/onci.25821
104. Todaro M, D'Asaro M, Caccamo N, Iovino F, Francipane MG, Meraviglia S, et al. Efficient killing of human colon cancer stem cells by $\gamma\delta$ T lymphocytes. *J Immunol* (2009) 182:7287–96. doi:10.4049/jimmunol.0804288
105. Gregoriadis G, Wills EJ, Swain CP, Tavill AS. Drug-carrier potential of liposomes in cancer chemotherapy. *Lancet* (1974) 1:1313–6. doi:10.1016/S0140-6736(74)90682-5
106. Yingchoncharoen P, Kalinowski DS, Richardson DR. Lipid-based drug delivery systems in cancer therapy: what is available and what is yet to come. *Pharmacol Rev* (2016) 68:701–87. doi:10.1124/pr.115.012070
107. Lao J, Madani J, Puertolas T, Alvarez M, Hernandez A, Pazo-Cid R, et al. Liposomal doxorubicin in the treatment of breast cancer patients: a review. *J Drug Deliv* (2013) 2013:456409. doi:10.1155/2013/456409
108. Peer D, Karp JM, Hong S, Farokhzad OC, Margalit R, Langer R. Nanocarriers as an emerging platform for cancer therapy. *Nat Nanotechnol* (2007) 2:751–60. doi:10.1038/nnano.2007.387
109. Yuan F, Dellian M, Fukumura D, Leunig M, Berk DA, Torchilin VP. Vascular permeability in a human tumor xenograft: molecular size dependence and cutoff size. *Cancer Res* (1995) 55:3752–6.
110. Hodgins NO, Wang JT, Al-Jamal KT. Nano-technology based carriers for nitrogen-containing bisphosphonates delivery as sensitizers of $\gamma\delta$ T cells for anticancer immunotherapy. *Adv Drug Deliv Rev* (2017) 114:143–60. doi:10.1016/j.addr.2017.07.003
111. Hodgins NO, Al-Jamal WT, Wang JT, Klippstein R, Costa PM, Sosabowski JK, et al. Investigating *in vitro* and *in vivo* $\alpha\beta$ 6 integrin receptor-targeting liposomal alendronate for combinatory $\gamma\delta$ T cell immunotherapy. *J Control Release* (2017) 256:141–52. doi:10.1016/j.jconrel.2017.04.025
112. Brinkmann U, Kontermann RE. The making of bispecific antibodies. *MABs* (2017) 9:182–212. doi:10.1080/19420862.2016.1268307
113. Oberg HH, Kellner C, Gonnermann D, Peipp M, Peters C, Sebens S, et al. $\gamma\delta$ T cell activation by bispecific antibodies. *Cell Immunol* (2015) 296:41–9. doi:10.1016/j.cellimm.2015.04.009
114. Oberg HH, Peipp M, Kellner C, Sebens S, Krause S, Petrick D, et al. Novel bispecific antibodies increase $\gamma\delta$ T-cell cytotoxicity against pancreatic cancer cells. *Cancer Res* (2014) 74(5):1349–60. doi:10.1158/0008-5472.CAN-13-0675
115. Peipp M, Wesch D, Oberg HH, Lutz S, Muskulus A, van de Winkel JGJ, et al. CD20-specific immunoligands engaging NKG2D enhance $\gamma\delta$ T cell-mediated lysis of lymphoma cells. *Scand J Immunol* (2017) 86:196–206. doi:10.1111/sji.12581
116. Oberg HH, Kellner C, Gonnermann D, Sebens S, Bauerschlag D, Gramatzki M. Tribody [(HER2)(2)xCD16] is more effective than trastuzumab in enhancing $\gamma\delta$ T cell and natural killer cell cytotoxicity against HER2-expressing cancer cells. *Front Immunol* (2018) 9:814. doi:10.3389/fimmu.2018.00814
117. de Bruin RCG, Veluchamy JP, Lougheed SM, Schneiders FL, Lopez-Lastra S, Lameris R, et al. A bispecific nanobody approach to leverage the potent and widely applicable tumor cytolytic capacity of V γ 9V δ 2-T cells. *Oncimmunology* (2017) 7(1):e1375641. doi:10.1080/2162402X.2017.1375641
118. Capsomidis A, Benthall G, Van Acker HH, Fisher J, Kramer AM, Abeln Z, et al. Chimeric antigen receptor-engineered human gamma delta T cells: enhanced cytotoxicity with retention of cross presentation. *Mol Ther* (2018) 26(2):354–65. doi:10.1016/j.ymthe.2017.12.001
119. Scotet E, Martinez LO, Grant E, Barbaras R, Jenö P, Guiraud M, et al. Tumor recognition following Vgamma9Vdelta2 T cell receptor interactions with a surface F1-ATPase-related structure and apolipoprotein A-I. *Immunity* (2005) 22(1):71–80. doi:10.1016/j.immuni.2004.11.012
120. Ribot JC, Mancio-Silva L, Pamplona A, Silva-Santos B. B7–CD28 costimulatory signals control the survival and proliferation of murine and human $\gamma\delta$ T cells via IL-2 production. *J Immunol* (2012) 189:1202–8. doi:10.4049/jimmunol.1200268
121. deBarros A, Chaves-Ferreira M, d'Orey F, Ribot JC, Silva-Santos B. CD70–CD27 interactions provide survival and proliferative signals that regulate T cell receptor-driven activation of human $\gamma\delta$ peripheral blood lymphocytes. *Eur J Immunol* (2011) 41:195–201. doi:10.1002/eji.201040905
122. Maniar A, Zhang X, Lin W, Gastman BR, Pauza CD, Strome SE, et al. Human $\gamma\delta$ T lymphocytes induce robust NK cell-mediated antitumor cytotoxicity through CD137 engagement. *Blood* (2010) 116:1726–33. doi:10.1182/blood-2009-07-234211
123. Rizvi NA, Hellmann MD, Snyder A, Kvistborg P, Makarov V, Havel JJ, et al. Cancer Immunology. Mutational landscape determines sensitivity to PD-1 blockade in non-small cell lung cancer. *Science* (2015) 348:124–8. doi:10.1126/science.aaa1348
124. Goodman AM, Kato S, Bazhenova L, Patel SP, Frampton GM, Miller V, et al. Tumor mutational burden as an independent predictor of response to immunotherapy in diverse cancers. *Mol Cancer Ther* (2017) 16:2598–608. doi:10.1158/1535-7163.MCT-17-0386

Conflict of Interest Statement: The authors declare that the research was conducted in the absence of any commercial or financial relationships that could be construed as a potential conflict of interest.

Copyright © 2018 Lo Presti, Pizzolato, Corsale, Caccamo, Sireci, Dieli and Meraviglia. This is an open-access article distributed under the terms of the Creative Commons Attribution License (CC BY). The use, distribution or reproduction in other forums is permitted, provided the original author(s) and the copyright owner are credited and that the original publication in this journal is cited, in accordance with accepted academic practice. No use, distribution or reproduction is permitted which does not comply with these terms.