



## Research Article

# The Study of HLA-G Gene and Protein Expression in Patients with Recurrent Miscarriage

Elnaz Mosaferi<sup>1</sup>, Nazila Alizadeh Gharamaleki<sup>1</sup>, Laya Farzadi<sup>2</sup>, Jafar Majidi<sup>3</sup>, Zohreh Babaloo<sup>1</sup>,  
Tohid Kazemi<sup>1</sup>, Mehrnoosh Ramezani<sup>3</sup>, Meraj Tabatabaei<sup>4</sup>, Hamid Ahmadi<sup>5</sup>, Leili Aghebati Maleki<sup>1</sup>,  
Behzad Baradaran<sup>1\*</sup>

<sup>1</sup>Immunology Research Center, Tabriz University of Medical Sciences, Tabriz, Iran.

<sup>2</sup>Women Reproductive Health Research Center, Tabriz University of Medical Sciences, Tabriz, Iran.

<sup>3</sup>Department of Biochemistry, school of Medicine, Ardabil University of Medical Science, Ardabil Iran.

<sup>4</sup>Department of Immunology, School of Medicine, Shahid Beheshti University of Medical Sciences, Tehran, Iran.

<sup>5</sup>Department of Anatomy, School of Medicine, Tehran University of Medical Sciences, Tehran, Iran.

## Article info

### Article History:

Received: 19 Mar. 2018

Revised: 26 Aug. 2018

Accepted: 29 Sep. 2018

published: 21 Feb. 2019

### Keywords:

- HLA-G
- Placenta
- Real-time PCR
- Miscarriage

## Abstract

**Purpose:** Although it has been frequently confirmed that HLA-G plays an important role in the reproduction and pregnancy, the pattern of HLA-G gene and its protein expression are rarely addressed in studies. Therefore we conducted this study in regard to evaluate the HLA-G gene and its protein expression in the women's placenta with recurrent miscarriage.

**Methods:** Placental samples were obtained from the women who were admitted for delivery or abortion in Al Zahra and Taleghani hospitals, Tabriz, Iran. HLA-G gene expression was determined by real-time polymerase chain reaction (PCR) and HLA-G protein expression was assessed by western blotting and immunofluorescence staining in the tissue samples.

**Results:** The results showed a significant decrease in the expression of gene and proteins of HLA-G in the women with recurrent miscarriage compared to the control placental tissues.

**Conclusion:** According to the obtained results, it was concluded that the decrement of HLA-G gene and protein expressions are associated with recurrent miscarriage. Since there are conflicting results from other studies, it is suggested to conduct a more comprehensive similar study with greater sample size.

## Introduction

Recurrent miscarriage (RM) refers to  $\geq 3$  consecutive fetus losses in first-trimester or  $\geq 2$  in the second-trimester that about 1%-2% of all women confronted with it.<sup>1</sup> About 50% of RM cases are associated with the known causes including thrombophilic disorders (40%), uterus malformations (19.3%), humoral dysfunction (17%-20%), parental chromosome disorders (4%) and the dysfunction of maternal immune system (3%-5%). Although in approximately 50% of RM cases, the etiology still remains unknown and are classified as idiopathic.<sup>2</sup> However, most idiopathic RM cases are considered as a result of maternal immunological graft rejection response against fetus and placenta.<sup>3</sup> The local compatibility of maternal immune system with semi allograft fetus leads to the successful mutual adaptation between mother and a fetus, which expresses the maternal and paternal genes in fifty-fifty manner.<sup>4</sup> Regarding to the achievement of such compatibility, the cytotoxic response of acquired immunity is modulated or ever inactivated and regulatory responses

are enhanced.<sup>5,6</sup> In contrast, intrinsic immune responses remain intact in order to provide the mother's immune system against infections and interact with embryonic tissues to form placenta and successful pregnancies.<sup>7-10</sup>

It is suggested that these regulatory mechanisms are devastated in most cases of idiopathic RM cases, and subsequently, the maternal immune system responses to the fetus's antigens. Immunosuppression of leukocytes in maternofetal interface is one of the main mechanisms for modulation of maternal immune system against semi allograft fetus. In the first trimester, 10%-15% of total placenta cells are compromised by leukocytes (killer cells and T cells) that are accounting for about 70% and 10% of this population, respectively.<sup>11</sup> The uterine NK cells are distinct CD56<sup>+</sup>CD16<sup>-</sup> NK cells with suppressor receptors, which bind to HLA-G.<sup>12</sup>

Growing evidence suggests that placental-expressed nonclassical class I MHC molecules such as HLA-E, F and most importantly HLA-G may play crucial roles in modulation of maternal immune system.<sup>13-15</sup>

\*Corresponding Author: Behzad Baradaran, Tel: +98 41 33371440, Email: [baradaranb@tbzmed.ac.ir](mailto:baradaranb@tbzmed.ac.ir)

‡ These authors contributed equally to this work and both are first author.

© 2019 The Author (s). This is an Open Access article distributed under the terms of the Creative Commons Attribution (CC BY), which permits unrestricted use, distribution, and reproduction in any medium, as long as the original authors and source are cited. No permission is required from the authors or the publishers.

Different studies suggested that HLA-G plays an important role in different stages of reproduction and even before fertilization. HLA-G is expressed on extra villous trophoblastic and amniotic epithelial cells, which has an essential role in a successful pregnancy.<sup>14,16,17</sup> It has been shown that sHLA-G levels in women's serum during pregnancy are 2-5 folds more than non-pregnant ones.<sup>18</sup>

The association of HLA-G with pregnancy complications such as preeclampsia and RM has been proposed in different publications. Also, it is reported that various polymorphisms and alteration in transcription of HLA-G gene is related to the increment of risk of these disorders.<sup>19-21</sup> Also, some studies showed that increasing of uterus NK cells and high expression of HLA-G accompanied with soluble HLA-G is associated with the higher rate of successful pregnancy and disruption of existing balance leads to severe problems in reproduction and pregnancy.<sup>22-24</sup>

Although many reports verified the role of HLA-G in the human reproduction and pregnancy, some studies have been conducted on the pattern of HLA-G genes expression. Therefore, the present study was aimed to evaluate the HLA-G genes expression in women's placenta with RM in comparison with those experienced successful pregnancies.

## Materials and Methods

### Preparation of maternal placental tissue samples

Maternal placental samples were obtained from volunteers that admitted for delivery or abortion in Al-Zahra and Taleghani hospitals, Tabriz-Iran. Twenty-one placental tissue samples of the RM patients (2 or 3 times or more, continuously and under twenty weeks) and 23 placental tissue samples of the normal pregnancies from mothers without any abortion history (as control) were obtained. Following bacterial, viral and karyotype assessments on the aborted samples, there were no sign of pathogenicity and genetic abnormalities, so that there were not any justifying reasons for the abortion. Table 1 presents demographic details of the test group.

Immediately after sampling, the placenta were put in normal saline at 4°C and far from light. Then, they were transferred to a laboratory, after washing in normal saline.

### RNA extraction and cDNA synthesis

RNA extraction was performed by using RNX Plus

(Cinnagen, Iran) according to the manufacturer's instruction under RNAase free condition. The concentration and purity of the extracted RNA was detected (A260/A280) by Biophotometer (Eppendorf, Germany) and its quality was approved by electrophoresis. cDNA was synthesized by Revertaid™ first strand cDNA synthesis (Fermentas, USA) according to the manufacturer's instruction in order to detect the mRNAs of HLA-G and  $\beta$ -Globin, and were stored at -20°C.

### Gene expression

The specific primers for HLA-G were designed by using Fast PCR software (version 6) and their specificity for underlined genes were proven by online BLAST and RT Primer database, then synthesized (Bioneer, South Korea). The sequence of the primers is shown in Table 2.

In order to evaluate the HLA-G and  $\beta$ -Globin genes expression, real-time polymerase chain reaction (PCR) was conducted. The relative quantitation of Real-Time PCR was performed by measurement of fluorescent radiation that was resulted in cyber green dye binding through Corbett-rotor Gene-600 (Corbett, Life Science, Australia). Total volume of the PCR reaction was 20  $\mu$ L containing 10  $\mu$ L of SYBR Green Master Mix (Applied Biosystems, USA), 0.5  $\mu$ L of the primers mixture, 2  $\mu$ L of cDNA and 7.5  $\mu$ L of DEPC water.

The PCR cycle conditions were 10 minutes at 95°C for early denaturation, 20 seconds at 95°C, 20 seconds at 65°C and 20 seconds at 72°C for 45 cycles. Finally, before data analyses, the melting curves of each reaction was assessed in order to prove the accuracy of the related gene peak. Crude data were extracted as Ct and analyzed using RESET (M. Pfaffl - Technical University Munich) and Rotor-Gene Q Series Software (Australia). To normalize the expression of HLA-G gene,  $\beta$ -Globin gene was used. So that in each sample, the  $\Delta$ Ct values for HLA-G gene was calculated as differentiating Ct values for HLA-G gene from that of  $\beta$ -Globin as reference gene.

### Immunoblotting analysis

HLA-G protein expression in the tissue samples was assessed by using Western blot and immunofluorescence techniques. About 150 mg of the placental tissue was mixed with 450  $\mu$ L of lysis buffer (150 mM NaCl, 50 mM HCL pH=7.4, 1 mM EDTA, Triton X-100 1%, Sodium deoxycholic acid 1%, SDS and about 0.1% of proteinase inhibitor) in a grinder and digested mechanically at 4°C, then centrifuged by 13000 RPM at 4°C for 10 minutes.

**Table 1.** Demographic details of the test group

Mother's age	<30 Years Old	>30 Years Old
	84%	16%
Gestational age	First trimester	Second trimester
	66%	34%
Frequent RM	Twice	>2
	43%	57%
Duration between 2 RM	< 2 years	> 2 years
	81%	19%

**Table 2.** The sequence of primers for HLA-G and  $\beta$ -Globin genes

Genes	Sequence of primer
$\beta$ -Globin	F: ACA CAA CTG TGT TCA CTA GC
	R: CAA CTT CAT CCA CGT TCA CC
HLA-G	F: TGG AGC AGG AGG GGC CGG AG
	R: CCG CGC AGG GTC TGC AGG TT

The concentration of the obtained proteins was detected by using BCA Protein Assay kit (Pierce, USA). Equal amount (20 µg) of the total proteins from each tissue samples were loaded on each well and separated on 4% SDS polyacrylamide gels via a minig apparatus (Bio-Rad Laboratories).

The obtained proteins were then transferred to polyvinylidene fluoride (PVDF) membranes (Millipore; Billerica, MA).

Following that, the membranes were blocked with 5% skim milk in PBS by incubation overnight at 4°C. Then PVDF membrane was incubated overnight at 4°C with the appropriate primary antibodies (anti-HLA-G and β-Actin; Abcam, Cambridge, MA, UK) followed by incubation with the appropriate HRP-conjugated secondary antibody (1:1000 dilution; Abcam) for 1.5 hours at room temperature. After washing the membranes, protein bands were visualized using enhanced chemiluminescence kit (GE healthcare, UK). In order to approve the equality of the loaded proteins among tests and control groups, the immunoblotting of β-Actin protein was used.

### Immunofluorescence staining

The placental tissue specimens were cut into sections with 5-20 µm in thickness, then they were fixed using acetone for 20 minutes at -20°C. The slides were kept for 10 minutes at room temperature. Then, in order to block unspecific binding sites, they were incubated with blocker buffer (5% of sheep serum and 2.5% of BSA in PBS) for 1 h at room temperature. The slides were incubated with anti-human HLA-G antibody for 12 hours at 4°C, and then followed with secondary antibody conjugated to FITC for 1 hours at room temperature. To eliminate non-specific binding of secondary antibody, the negative control (not incubated with anti HLA-G antibody) was used. Finally, the slides were analyzed by using fluorescent microscope (Nikon, Japan).

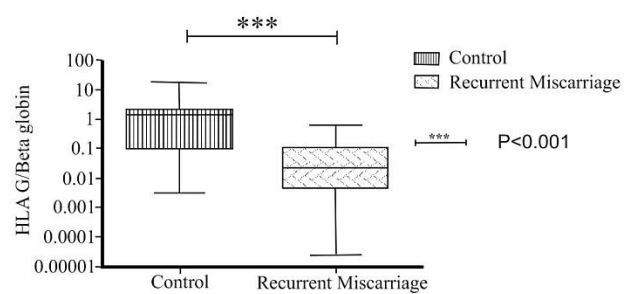
### Statistical analysis

Statistical analyses were performed using SPSS, PC Statistics (version 19.0; SPSS Inc., Chicago, IL, USA). Paired *t* test was applied to compare the results of studies. *P* values <0.05 were reported to be statistically significant.

### Results and Discussion

The rate of HLA-G expression was assessed in the 21 women's placental samples which experienced ≥3 RM, and in the 23 women with successful pregnancies (without any miscarriage) as control group. According to the results of real-time PCR, the expression of HLA-G gene was significantly decreased in the test group ( $P < 0.001$ ). The results are presented in Figure 1.

Also, immunoblotting evaluation of HLA-G protein showed that the expression of HLA-G was significantly decreased in the placenta samples from test group compare to the control group. The results showed that, protein has



**Figure 1.** The graph related to comparison of HLA-G expression between test and control groups. According to the results of Real-Time PCR, the HLA-G gene expression was decreased significantly in the test group.

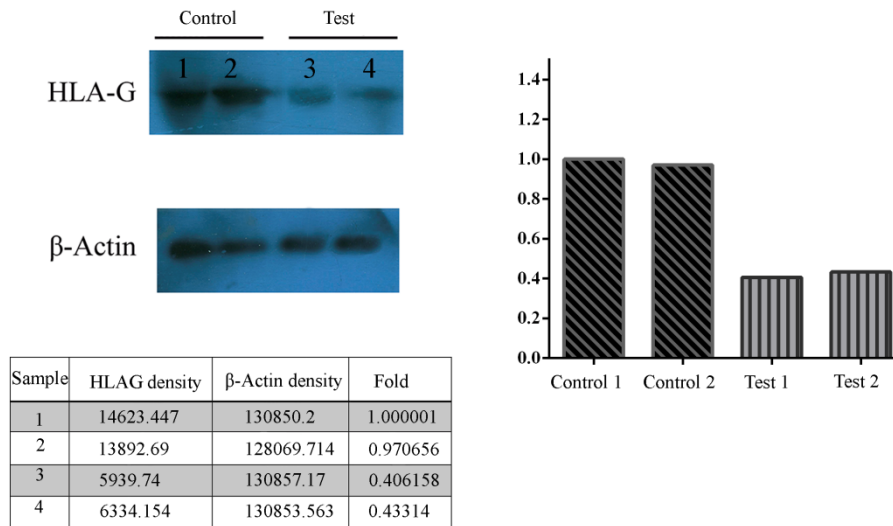
been loaded equally among test and control groups. The results of immunoblotting of HLA-G and β-Actin proteins are shown in Figure 2.

In addition, the fluorescent staining technique was used for analyze the expression of HLA-G protein in the studied tissues. The fluorescence microscope results showed a significant decrease of HLA-G protein expression in the placental tissue from test group compared with the control group. The evaluation of the negative control slides revealed that second FITC-conjugated antibodies had very low unspecific bound with the tissue samples, which could be ignored. The results of fluorescent staining are shown in Figure 3.

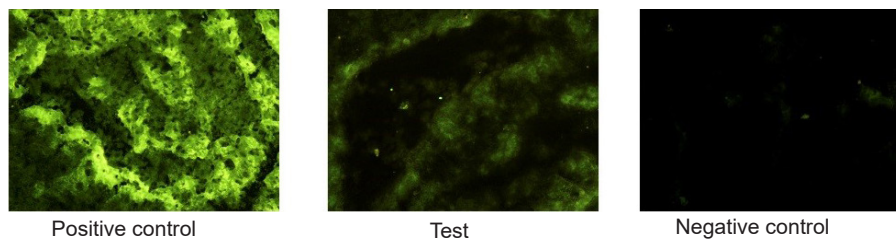
Although many studies have revealed the role of HLA-G in fetomaternal interface in the recent years, its association with successful pregnancy is still not completely understood. HLA-G is a member of nonclassical HLA class Ib that plays an important role in inducing of tolerance to semi- allogeneic fetus in normal pregnancies.<sup>25</sup> The membrane HLA-G is mostly pre-expressed on extra villous cytotrophoblast cells (ETVs) and sHLA-G expressed on placental trophoblasts of chorionic villous<sup>26,27</sup> and have the capability of inhibiting NK cells, CD8+ and CD4+ T cells, B cells and antigen presenting cells such as macrophages and dendritic cells.<sup>28</sup>

In this study, HLA-G protein expression was measured in the subjects with RM in comparison with the healthy control. The results showed that HLA-G expression in RM subjects was decreased significantly. Recent studies revealed that HLA-G plays an important role in the pathogenesis of RM. Therefore, any deficiency in HLA-G expression is associated with recurrent miscarriage.<sup>29</sup>

Akhter et al showed that the expression of HLA-G in cultured EVT cells of the subjects with RM was decreased significantly in comparison to the subjects with normal pregnancies.<sup>30</sup> Also, similar results about decrease of HLA-G expression in EVT cells have been suggested by various studies.<sup>31</sup> However, the results of some other studies are not consistent with this study.<sup>32</sup> Bhalla and colleagues evaluated the expression of HLA-G using immunohistochemistry staining in placental tissue of the subjects with RM samples compared with the healthy control group. The results showed that the rate of HLA-G



**Figure 2.** The results of immunoblotting. The evaluation of product bands from immunoblotting of HLA-G protein confirmed a decrease in expression of HLA-G in the placental tissue of subjects with RM compared with subjects who could give normal birth. The results showed that protein has been loaded equally among test and control groups.



**Figure 3.** The results of fluorescent staining. Evaluation with fluorescence microscope showed a significant decrease in the expression of HLA-G protein in the placental tissue of subjects with RM compared with subjects who could give normal birth (positive control).

expression is not significantly different between 2 groups. They declared that since the sample size in the similar studies were not adequate, so that their results are not consistent with the present study.<sup>33</sup>

Rabreau et al evaluated the rate of HLA-G expression in the patients with molar pregnancies and RM. They suggested that the rate of HLA-G expression was increased in molar pregnancy (a condition in which the trophoblastic cells are highly invasive), while in RM subjects, it was decreased in comparison with the normal pregnancies.<sup>34</sup> It is assumed that the expression of HLA-G could affect the potency of trophoblast cells invasion. The lower expression of HLA-G has been reported in different studies.<sup>35</sup>

Most studies have evaluated the expression of HLA-G protein, but the results were controversial. In this study, as well as the evaluation of HLA-G protein expression rate, the gene expression of HLA-G gene was analyzed by using real-time PCR. The results indicated that, the HLA-G gene expression was decreased in the patients with RM. HLA-G alleles contains a 14 bp fragment in exon 8 that its deletion leads to significant decrease in expression of HLA-G mRNA and protein.<sup>36,37</sup> Different studies showed that insertion/deletion polymorphism of this site is

significantly associated with RM.<sup>38,39</sup> These results can be indirectly in line with our findings in the present study. Although the association of this polymorphism with RM is controversial, other studies reported the association of different polymorphisms of HLA-G gene with recurrent miscarriages.<sup>40,41</sup> Analyzing the results of different studies indicated that when the effect of single factors such as the rate of HLA-G expression, the level of sHLA-G, HLA-G polymorphisms and pro-inflammatory cytokines on RM are being assessed, the results are controversial. Supposedly, this inconsistency has not resulted in incorrect designing of studies, but probably from the insufficient samples size and incorrect way of selecting the RM subjects, since there are various classes of RM with different pathogenesis. In other words, in some studies patients with one or 2 abortion was considered as RM. Also, karyotyping of aborted fetus is an important issue because abortions that is resulted from genetic abnormality should not be considered as RM cases. Thus, in order to obtain better and more accurate results, it is suggested to conduct studies with greater sample size, more homogeneous samples and more clear definition of RM. Also, due to the heterogeneity and complicated histological structure of placenta, it is better to define the micro-anatomical region of sampling comprehensively and more



precise in the future studies.

Finally, we can be assumed that the synthetic sHLA-G analogs may be used for treatment of certain pregnancy-related disorders and facilitate reproduction. However, a fundamental understanding of the pathophysiology in these disorders is needed before starting to such expedience.

Also, in *in vitro* fertilization (IVF) treatments, the measurement of sHLA-G in the embryo culture medium can be used as a marker for improvement of successful assisted reproductive technology, by choosing the fertilized oocytes with highest potential, as sHLA-G positive culture medium correlates with pregnancy success.

### Conclusion

The present study showed that the decrement of HLA-G gene and protein expressions are associated with RM. But, since there are different controversial reports, it is suggested to conduct a more comprehensive similar study with greater sample size.

### Ethical Issues

The study was approved by the ethical committee of Tabriz university of medical science and all participants signed a written consent form before of the enrolment in this study (ethical code: 1530).

### Conflict of Interest

The authors have no conflicts of interest to declare.

### Acknowledgments

The authors would like to thank all of the Immunology Research Center, Tabriz University of Medical Sciences, for supporting the work.

### References

- Coulam CB. Epidemiology of recurrent spontaneous abortion. *Am J Reprod Immunol* 1991;26(1):23-7. doi: 10.1111/j.1600-0897.1991.tb00697.x
- Ford HB, Schust DJ. Recurrent pregnancy loss: Etiology, diagnosis, and therapy. *Rev Obstet Gynecol* 2009;2(2):76-83.
- Matter TE, Sharif FA. HLA-G and HLA-E gene polymorphisms in idiopathic recurrent spontaneous abortion women in Gaza strip-palestine. *Int J Reprod Contracept Obstet Gynecol* 2013;2(3):277-83. doi: 10.5455/2320-1770.ijrcog20130904
- Robertson SA. Immune regulation of conception and embryo implantation-all about quality control? *J Reprod Immunol* 2010;85(1):51-7. doi: 10.1016/j.jri.2010.01.008
- Guerin LR, Prins JR, Robertson SA. Regulatory t-cells and immune tolerance in pregnancy: A new target for infertility treatment? *Hum Reprod Update* 2009;15(5):517-35. doi: 10.1093/humupd/dmp004
- Leber A, Teles A, Zenclussen AC. Regulatory T cells and their role in pregnancy. *Am J Reprod Immunol* 2010;63(6):445-59. doi: 10.1111/j.1600-0897.2010.00821.x
- Barrientos G, Tirado-Gonzalez I, Klapp BF, Karimi K, Arck PC, Garcia MG, et al. The impact of dendritic cells on angiogenic responses at the fetal-maternal interface. *J Reprod Immunol* 2009;83(1-2):85-94. doi: 10.1016/j.jri.2009.07.011
- Dekel N, Gnainsky Y, Granot I, Mor G. Inflammation and implantation. *Am J Reprod Immunol* 2010;63(1):17-21. doi: 10.1111/j.1600-0897.2009.00792.x
- Nagamatsu T, Schust DJ. The contribution of macrophages to normal and pathological pregnancies. *Am J Reprod Immunol* 2010;63(6):460-71. doi: 10.1111/j.1600-0897.2010.00813.x
- Zhang J, Chen Z, Smith GN, Croy BA. Natural killer cell-triggered vascular transformation: maternal care before birth? *Cell Mol Immunol* 2011;8(1):1-11. doi: 10.1038/cmi.2010.38
- Loke YW, King A, Burrows TD. Decidua in human implantation. *Hum Reprod* 1995;10 Suppl 2:14-21. doi: 10.1093/humrep/10.suppl\_2.14
- Gonen-Gross T, Goldman-Wohl D, Huppertz B, Lankry D, Greenfield C, Natanson-Yaron S, et al. Inhibitory NK receptor recognition of HLA-G: Regulation by contact residues and by cell specific expression at the fetal-maternal interface. *PLoS One* 2010;5(1):e8941. doi: 10.1371/journal.pone.0008941
- Kovats S, Main EK, Librach C, Stubblebine M, Fisher SJ, DeMars R. A class I antigen, HLA-G, expressed in human trophoblasts. *Science* 1990;248(4952):220-3. doi: 10.1126/science.2326636
- Mosaferi E, Majidi J, Mohammadian M, Babaloo Z, Monfaredan A, Baradaran B. HLA-G expression pattern: Reliable assessment for pregnancy outcome prediction. *Adv Pharm Bull* 2013;3(2):443-6. doi: 10.5681/apb.2013.072
- Redman CW, McMichael AJ, Stirrat GM, Sunderland CA, Ting A. Class I major histocompatibility complex antigens on human extra-villous trophoblast. *Immunology* 1984;52(3):457-68.
- Abediankenari S, Farzad F, Rahmani Z, Hashemi-Soteh MB. HLA-G5 and G7 isoforms in pregnant women. *Iran J Allergy Asthma Immunol* 2015;14(2):217-21.
- Tabatabaei M, Mosaffa N, Nikoo S, Bozorgmehr M, Ghods R, Kazemnejad S, et al. Isolation and partial characterization of human amniotic epithelial cells: The effect of trypsin. *Avicenna J Med Biotechnol* 2014;6(1):10-20.
- Steinborn A, Rebmann V, Scharf A, Sohn C, Grosse-Wilde H. Placental abruption is associated with decreased maternal plasma levels of soluble HLA-G. *J Clin Immunol* 2003;23(4):307-14.
- Larsen MH, Hviid TV. Human leukocyte antigen-G polymorphism in relation to expression, function, and disease. *Hum Immunol* 2009;70(12):1026-34. doi: 10.1016/j.humimm.2009.07.015
- Larsen MH, Hylenius S, Andersen AM, Hviid TV. The 3'-untranslated region of the HLA-G gene in relation to pre-eclampsia: Revisited. *Tissue Antigens* 2010;75(3):253-61. doi: 10.1111/j.1399-0039.2009.01435.x
- O'Brien M, McCarthy T, Jenkins D, Paul P, Dausset J, Carosella ED, et al. Altered HLA-G transcription in pre-eclampsia is associated with allele specific inheritance: Possible role of the HLA-G gene in susceptibility to the disease. *Cell Mol Life Sci* 2001;58(12-13):1943-9. doi: 10.1007/PL00000828
- Rizzo R, Lo Monte G, Bortolotti D, Graziano A, Gentili V, Di Luca D, et al. Impact of soluble HLA-G levels and endometrial nk cells in uterine flushing samples from primary and secondary unexplained infertile women. *Int J Mol Sci* 2015;16(3):5510-6. doi: 10.3390/ijms16035510
- Shobeiri SS, Rahmani Z, Hossein Nataj H, Ranjbaran H,

- Mohammadi M, Abediankenari S. Uterine natural killer cell and human leukocyte antigen-G1 and human leukocyte antigen-G5 expression in vaginal discharge of threatened-abortion women: A case-control study. *J Immunol Res* 2015;2015:692198. doi: 10.1155/2015/692198
24. Vercammen MJ, Verloes A, Van de Velde H, Haentjens P. Accuracy of soluble human leukocyte antigen-G for predicting pregnancy among women undergoing infertility treatment: meta-analysis. *Hum Reprod Update* 2008;14(3):209-18. doi: 10.1093/humupd/dmn007
25. Loke YW, King A. Immunology of human placental implantation: clinical implications of our current understanding. *Mol Med Today* 1997;3(4):153-9. doi: 10.1016/S1357-4310(97)01011-3
26. Goldman-Wohl DS, Ariel I, Greenfield C, Hochner-Celnikier D, Cross J, Fisher S, et al. Lack of human leukocyte antigen-G expression in extravillous trophoblasts is associated with pre-eclampsia. *Mol Hum Reprod* 2000;6(1):88-95. doi: 10.1093/molehr/6.1.88
27. Ishitani A, Sageshima N, Lee N, Dorofeeva N, Hatake K, Marquardt H, et al. Protein expression and peptide binding suggest unique and interacting functional roles for HLA-E, F, and G in maternal-placental immune recognition. *J Immunol* 2003;171(3):1376-84. doi: 10.4049/jimmunol.171.3.1376
28. Hunt JS, Morales PJ, Pace JL, Fazleabas AT, Langat DK. A commentary on gestational programming and functions of HLA-G in pregnancy. *Placenta* 2007;28 Suppl A:S57-63. doi: 10.1016/j.placenta.2007.01.004
29. Cecati M, Giannubilo SR, Emanuelli M, Tranquilli AL, Saccucci F. HLA-G and pregnancy adverse outcomes. *Med Hypotheses* 2011;76(6):782-4. doi: 10.1016/j.mehy.2011.02.017
30. Akhter A, Faridi RM, Das V, Pandey A, Naik S, Agrawal S. In vitro up-regulation of HLA-G using dexamethasone and hydrocortisone in first-trimester trophoblast cells of women experiencing recurrent miscarriage. *Tissue Antigens* 2012;80(2):126-35. doi: 10.1111/j.1399-0039.2012.01884.x
31. Emmer PM, Steegers EA, Kerstens HM, Bulten J, Nelen WL, Boer K, et al. Altered phenotype of HLA-G expressing trophoblast and decidual natural killer cells in pathological pregnancies. *Hum Reprod* 2002;17(4):1072-80. doi: 10.1093/humrep/17.4.1072
32. Eskicioglu F, Ozdemir AT, Ozdemir RB, Turan GA, Akan Z, Hasdemir SP. The association of HLA-G and immune markers in recurrent miscarriages. *J Matern Fetal Neonatal Med* 2016;29(18):3056-60. doi: 10.3109/14767058.2015.1114085
33. Bhalla A, Stone PR, Liddell HS, Zanderigo A, Chamley LW. Comparison of the expression of human leukocyte antigen (HLA)-G and HLA-E in women with normal pregnancy and those with recurrent miscarriage. *Reproduction* 2006;131(3):583-9. doi: 10.1530/rep.1.00892
34. Rabreau M, Rouas-Freiss N, Landi M, Le Danff C, Carosella ED. HLA-G expression in trophoblast cells is independent of embryonic development. *Hum Immunol* 2000;61(11):1108-12. doi: 10.1016/S0198-8859(00)00196-8
35. O'Brien M, Dausset J, Carosella ED, Moreau P. Analysis of the role of HLA-G in preeclampsia. *Hum Immunol* 2000;61(11):1126-31. doi: 10.1016/S0198-8859(00)00193-2
36. Rizzo R, Hviid TV, Stignani M, Balboni A, Grappa MT, Melchiorri L, et al. The HLA-G genotype is associated with il-10 levels in activated pbmcs. *Immunogenetics* 2005;57(3-4):172-81. doi: 10.1007/s00251-005-0788-0
37. Rousseau P, Le Discorde M, Mouillot G, Marcou C, Carosella ED, Moreau P. The 14 bp deletion-insertion polymorphism in the 3' UT region of the HLA-G gene influences HLA-G mRNA stability. *Hum Immunol* 2003;64(11):1005-10. doi: 10.1016/j.humimm.2003.08.347
38. Wang X, Jiang W, Zhang D. Association of 14-bp insertion/deletion polymorphism of HLA-G gene with unexplained recurrent spontaneous abortion: A meta-analysis. *Tissue Antigens* 2013;81(2):108-15. doi: 10.1111/tan.12056
39. Koc A, Kirbiyik O, Kutbay YB, Ozyilmaz B, Ozdemir TR, Kaya OO, et al. Fetal HLA-G alleles and their effect on miscarriage. *Adv Clin Exp Med* 2018;27(9):1233-7. doi: 10.17219/acem/69692
40. Alizadeh N, Majidi J, Movassaghpour A, Farzadi L, Mohammadian M, Baradaran B. Relation between HLA-G gene null allele (HLA-G\*0105n) and recurrent miscarriage. *Shiraz E-Med J* 2015;16(3):e26471. doi: 10.17795/semj26471
41. Alizadeh N, Mosaferi E, Farzadi L, Majidi J, Monfaredan A, Yousefi B, et al. Frequency of null allele of human leukocyte antigen-G (HLA-G) locus in subjects to recurrent miscarriage. *Int J Reprod Biomed (Yazd)* 2016;14(7):459-64.