



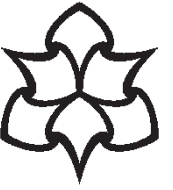
**Manchester
Metropolitan
University**

Ryder, Jo and Fell, Rachel (2019) *Moving from one embedding tool to another: managing the change process*. In: Talis Insight Europe 2019, 30 Apr 2019 - 1 May 2019, Birmingham.

Downloaded from: <http://e-space.mmu.ac.uk/623003/>

Please cite the published version

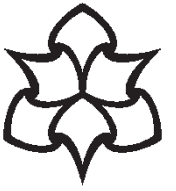
<https://e-space.mmu.ac.uk>



Moving from one embedding tool to another: managing the change process

Jo Ryder & Rachel Fell





Background



- Lancaster plugin no longer being maintained by staff at Lancaster
- Needed to change to a supported service
- A lot of our reading lists were moving to a weekly structure which provides more flexibility when using Talis LTI



LRT (Learning & Research Technologies)



- Manage Moodle
- Partners
- Feb 2017 – mini project plan
- Support from colleagues in IT



Tim's mini project plan



- <https://support.talis.com/hc/en-us/articles/206869725-Talis-Aspire-Reading-Lists-LTI-tool-mini-project>
- Critical steps involved – Audit your IDP to make sure that it uses Platform for Privacy Preferences (P3P) headers in all responses
- November 2017 Talis LTI working alongside Lancaster Plugin





New list view

- January 2018 turned on the List View beta button for our tenancy.
- June 2018 – switched new list view for all lists
- Realised Lancaster plugin didn't work – reverted to classic view



Managing two changes

1. Move to new list view
2. Replacing Lancaster plugin with Talis LTI

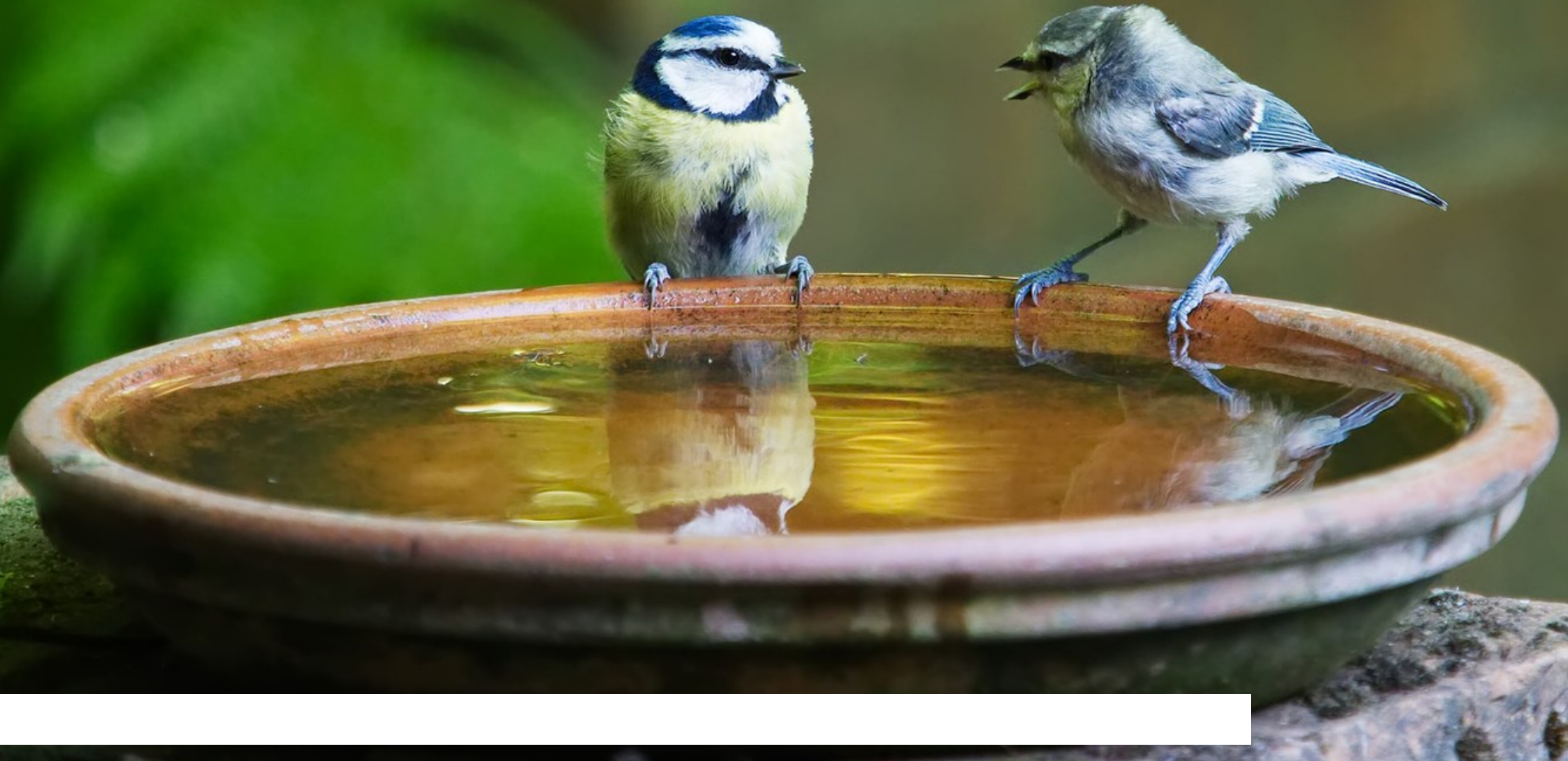


Action plan

- LRT provided list of academics using Lancaster plugin
- Only wanted to communicate with those affected by the change



Explaining the change



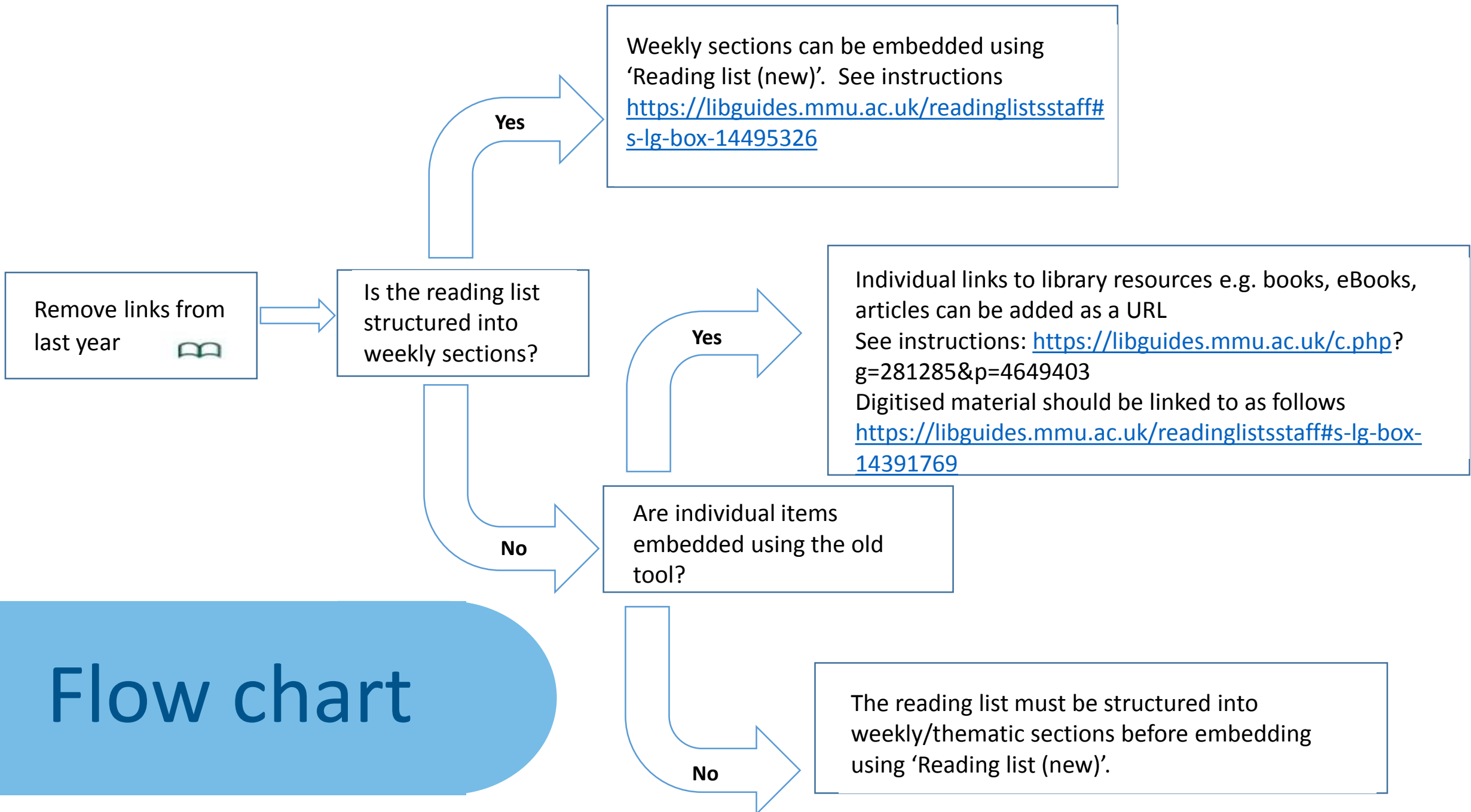
Communicating change to academic staff

We are aware that you are currently embedding reading list items within Moodle. The tool you used to do this is being phased out from the beginning of September to make way for a new tool. This means that all the embedded links in your units will disappear in September.

In order to prevent this you will need to make changes to your Moodle areas. Please can you get in touch so we can support you through this process.



Flow chart





Library Staff briefing sessions

- 1. Opportunity to explain the change in person to Librarians**
- 2. Flow-chart for reference**
- 3. Answer any questions**

Challenges



Support



Outcome

Top Landing Pages

Oct-Dec 2017

Landing Page	Sessions	Pages/Session
/index.html	2,788	7.14
/lists/DD5D1722-1A27-A568-F77F-690DEA2FD36B.html	1,629	3.95
/lists/BAE54B38-1676-67DF-6C59-97D1C28716A8.html	691	3.79
/lists/A5669AA7-D5F9-458F-96C1-BA8BA347DC1A.html	461	3.15
/lists/5E69C4C3-E383-4BCD-5E14-2956AB768C47.html	373	3.10
/lists/17553DE9-0339-E854-BA26-9DB779A29E42.html	357	3.59
/items/41DEDD17-7520-AF99-94DF-DB60264B5C34.html	350	1.59
/lists/604195D7-87D8-8FD5-7011-05260C6CB01A.html	330	3.82
/items/BE8F28BF-48B5-B6BE-7956-BA4306D9062E.html	302	1.58
/items/182BC4DE-93EB-8953-6775-8AAE577518F3.html	286	1.43

Top Landing Pages

Oct-Dec 2018

Landing Page	Sessions	Pages/Session
/index.html	3,130	2.31
/sections/D95919B4-E826-F433-8A56-96A853D5E09F.html?lang=en	2,043	1.35
/sections/E74B8268-DB96-7D8F-00B5-CA54555A5904.html?lang=en	1,764	1.21
/sections/DA695C37-DC0A-54FF-7141-A4E651470B9E.html?lang=en	1,716	1.76
/sections/3D5E6453-8209-A030-DB71-D23114EB0919.html?lang=en	1,345	1.69
/index.html?lang=en	1,022	2.12
/lists/D0C68754-33AB-E44F-B123-EC856893AE55.html?lang=en	1,019	1.20
/index.html?lang=en&login=1	932	2.63
/lists/B7F3D274-7E51-84B8-B7FB-92C73D056B93.html?lang=en	701	1.19
/sections/23B85B4D-CF40-3C60-7025-9E51F05FDBA3.html?lang=en	674	1.96

More challenges

Problems with embedding reading list sections in Moodle ×

Dec 21 2018, 12:31pm **Reading Lists** Internal Issue resolved

Following the [changes we made to our login page on 17th December](#), we've noticed an issue with [embedding reading list sections in Moodle](#).

This process is being prevented by some browser security settings.

The workaround is to use an up to date version (71) of Google Chrome as your browser, rather than Edge or IE.

Close

Conclusions

1. Plan
2. Communicate
3. Support



