



Project Update

for

Purdue Road School

March 11, 2014

Andy Barber, P.E. – KYTC

Ron Heustis, P.E. - INDOT



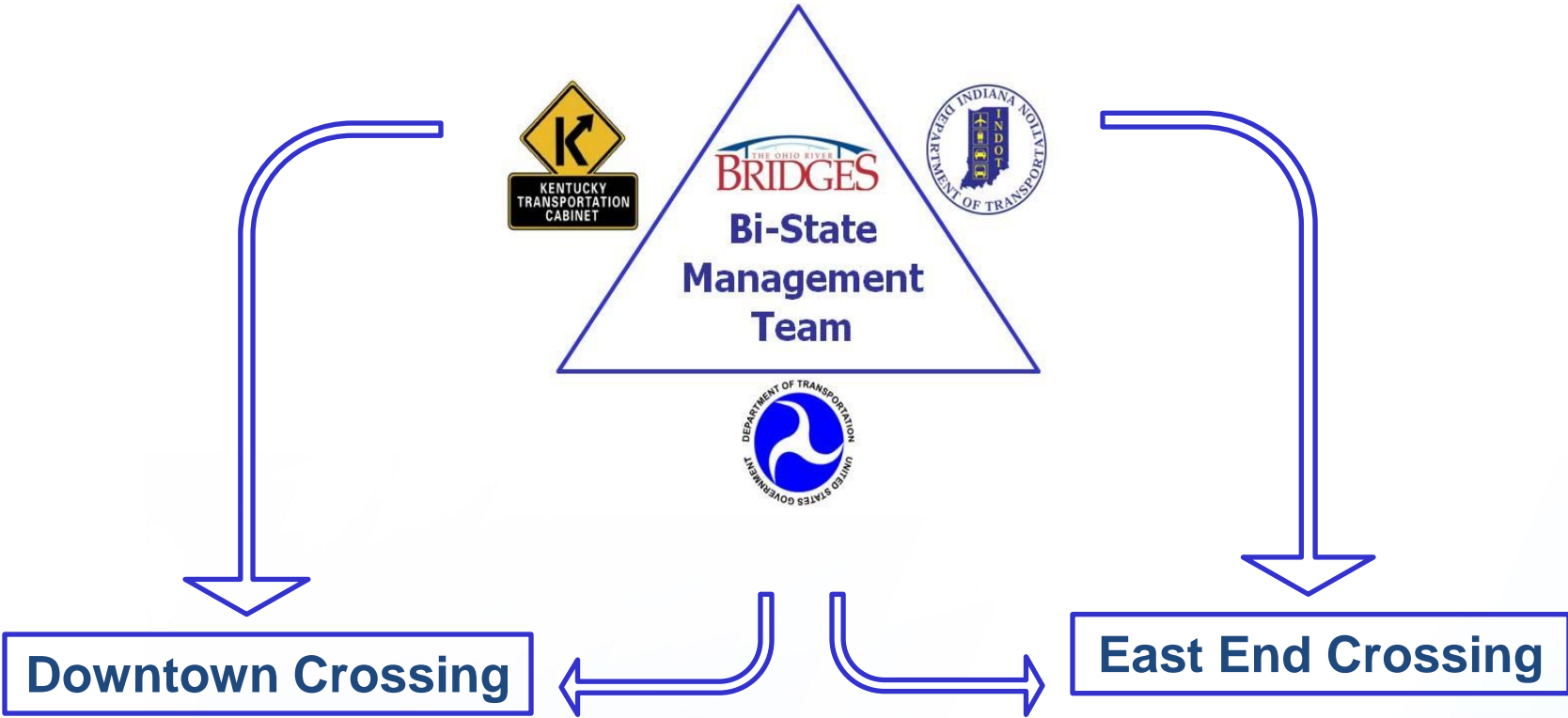
Brief History

- ❑ **1969**
 - ❑ Project placed in long range plan
- ❑ **Fall 2012**
 - ❑ **KYTC & IFA/INDOT announce results**
 - ❑ Downtown Crossing – D/B Contract (KYTC)
 - ❑ Walsh DBT
 - ❑ East End Crossing – P3 (IFA/INDOT)
 - ❑ WVB East End Partners
- ❑ **Summer 2013**
 - ❑ Construction begins



Management Overview

Bi-State Development Agreement



THE OHIO RIVER BRIDGES

East End Crossing Ron Heustis, Project Manager



Location



P3 Contract Relationships



P3 Owner



Owner Rep & Support

P3 Developer

DEVELOPER,
EQUITY MEMBERS,
LEAD O&M CONTRACTOR



Since March 2013

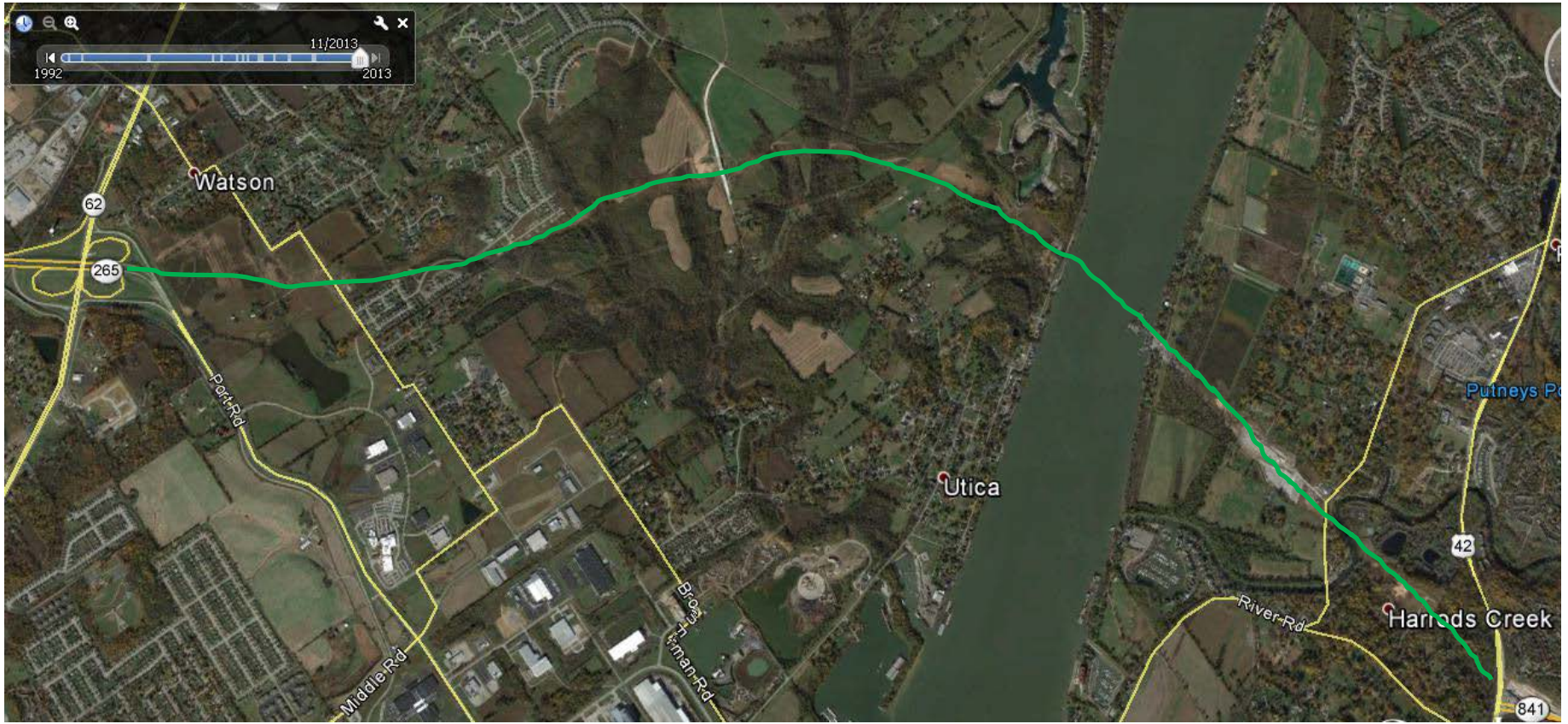
- ❑ **March 28**
 - ❑ **Financial close**
 - ❑ **Private activity bonds sold (WVB)**
- ❑ **April – May 2013**
 - ❑ **WVB completed Project Management Plan**
- ❑ **June 2013**
 - ❑ **Construction began**
- ❑ **July 2013 – Feb. 2014**
 - ❑ **Roadway and tunnel blasting/excavation**
 - ❑ **Main spans tower foundations**

Design progressed to 80%



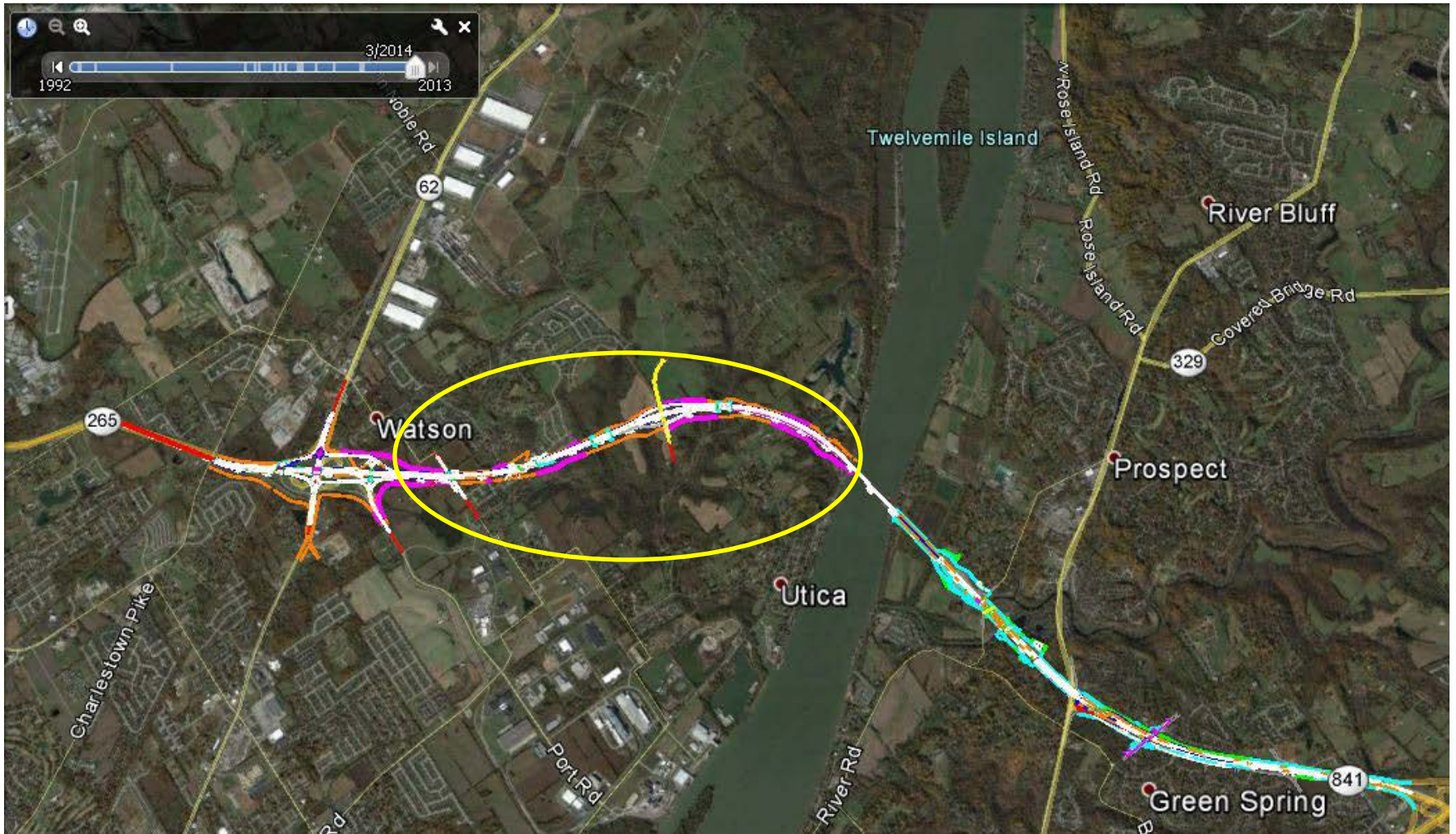
2010 Satellite Photo





2013 Satellite Photo





**Section 6
Indiana Approach**

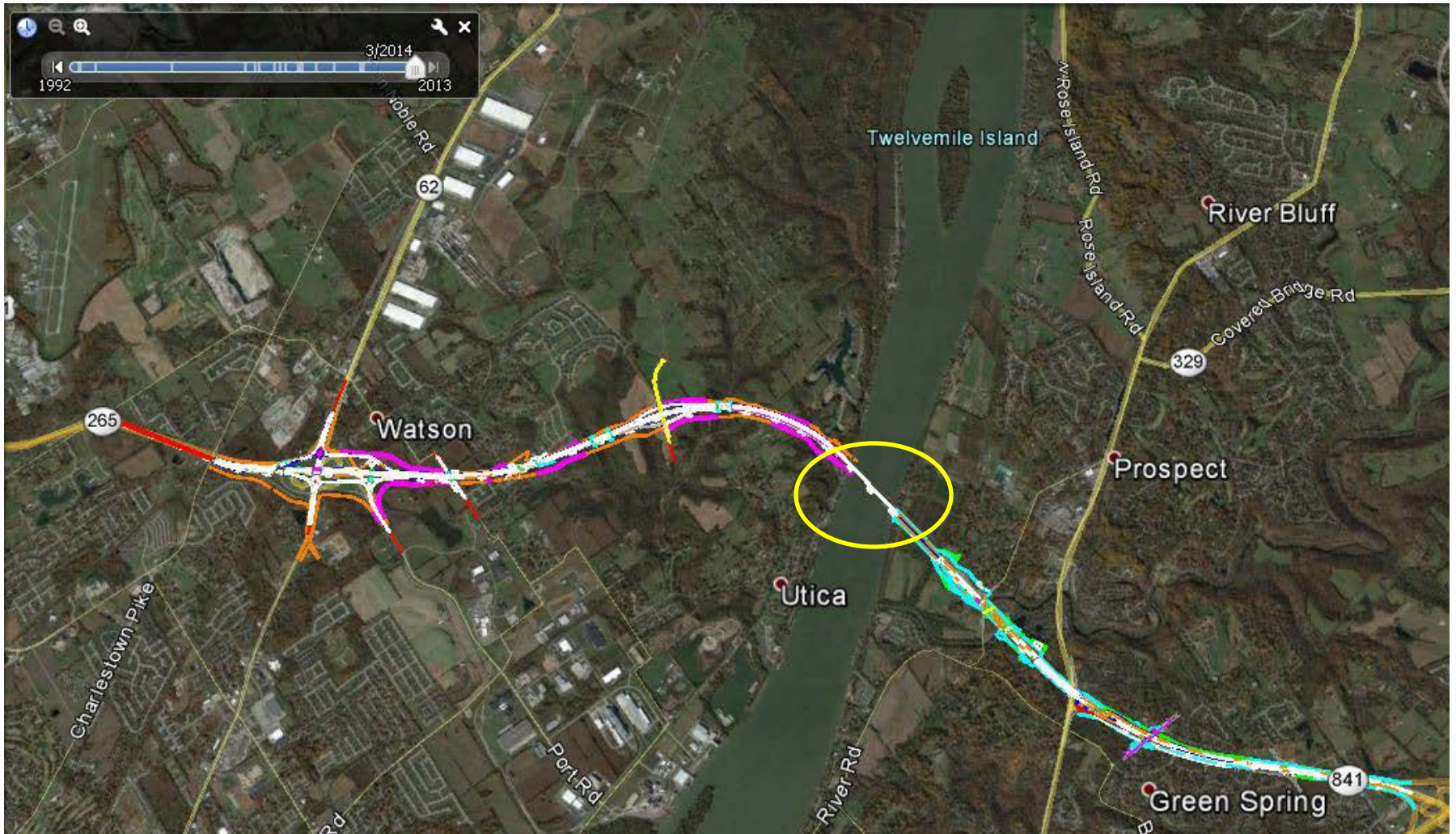


**Section 6
Looking from
Indiana towards
Kentucky**



**Section 6
Looking North
from
Salem Road
Bridge**





Section 5 Main Spans Bridge





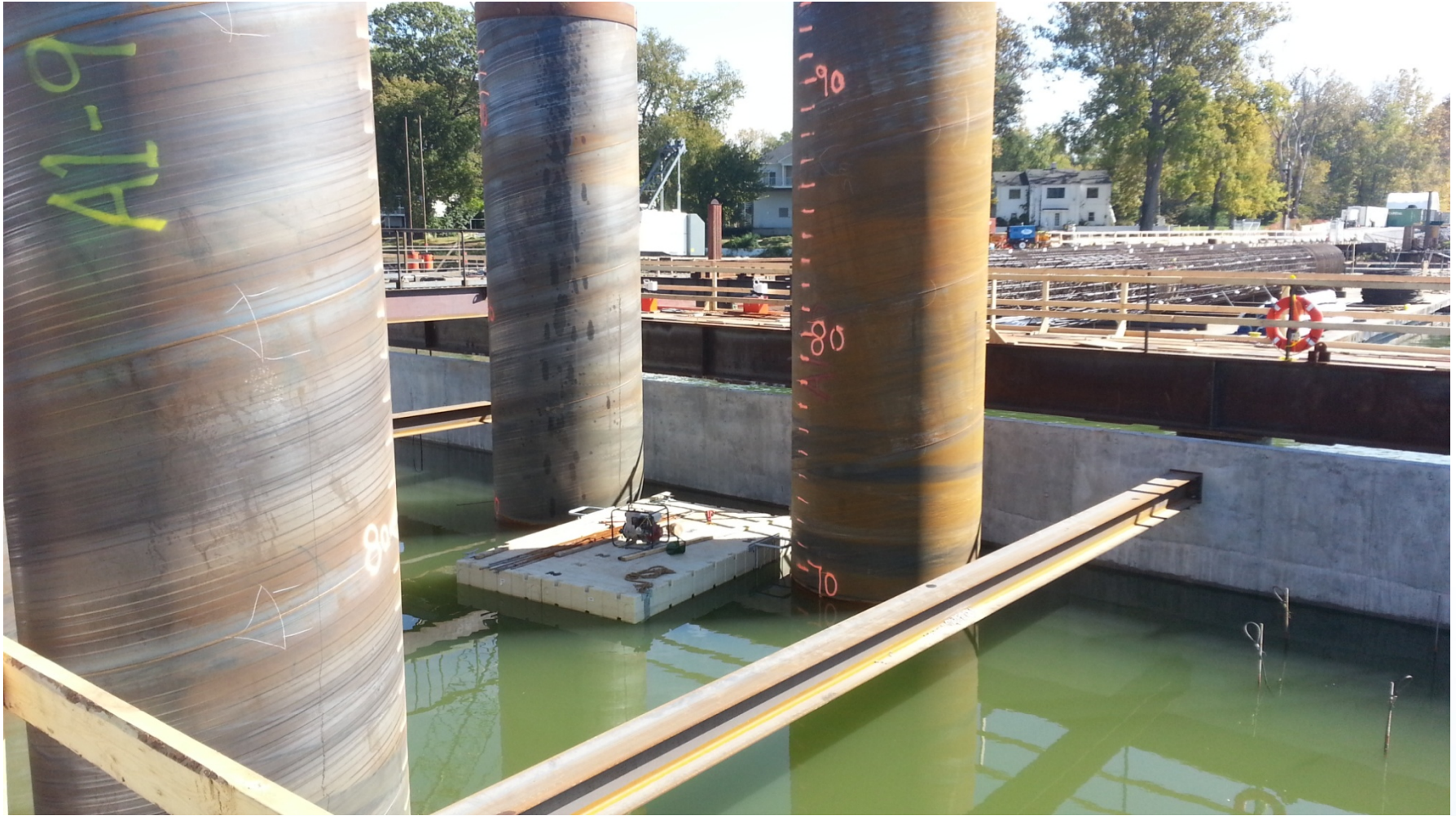
**Section 5
Tower 3
Foundation**





**Section 5
Tower 3
Foundation**





**Tower 3
Drilled Shaft
Permanent Casings**





**Tower 3
Shaft Drilling**



**Tower 3
Drilled Shaft
Resteel Cage**



**Tower 3
Drilled Shaft
Concrete
Placement**

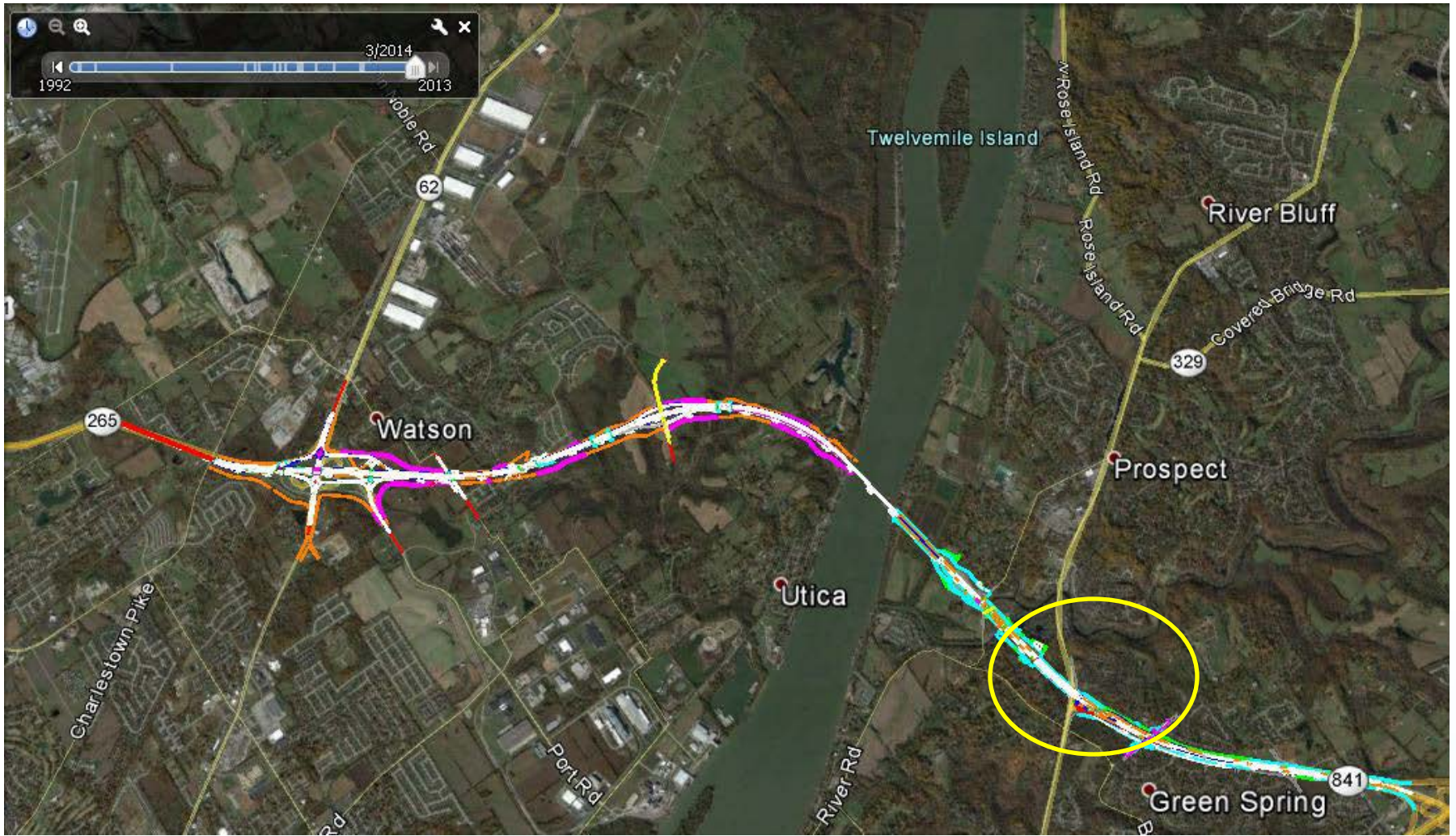


<http://oxblue.com/open/Walsh-Vinci/ORB-EEC>



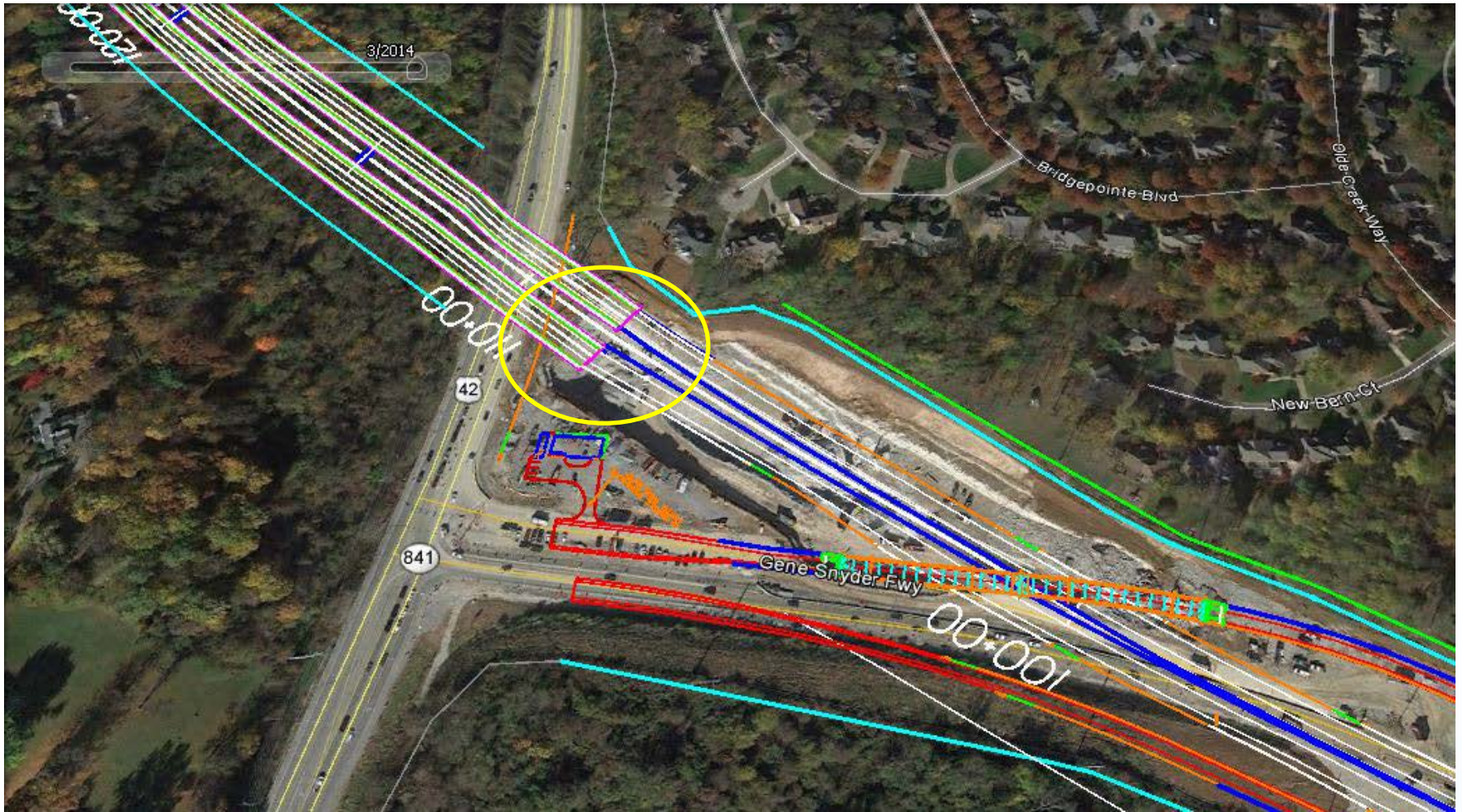
**Section 5
Webcam**





Section 4 Kentucky Approach Tunnel





**Tunnel South
Portal Area
KY 841/US 42**





**Tunnel South
Portal Area
KY 841/US 42**

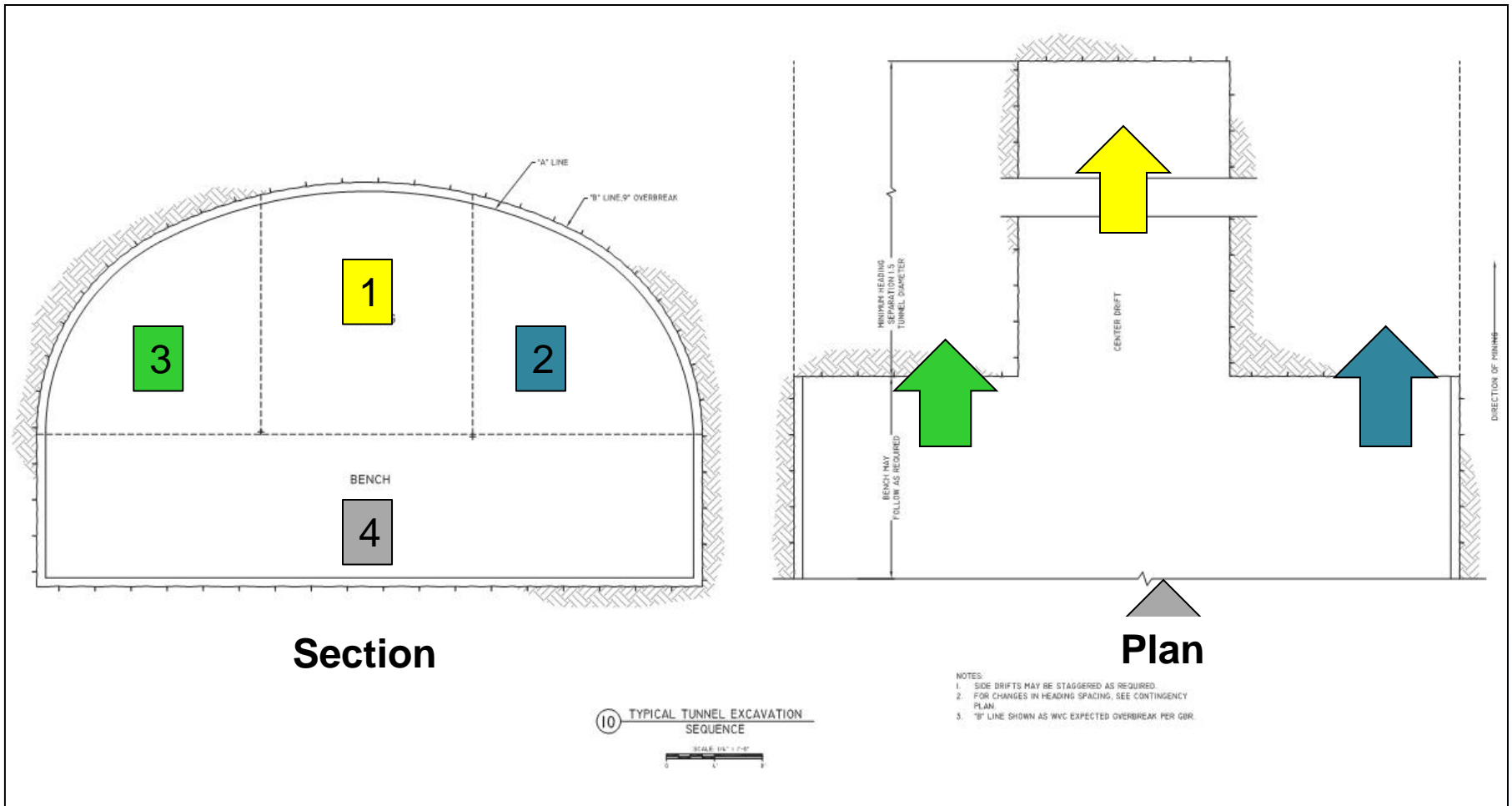




Tunnel South Portal First Blast





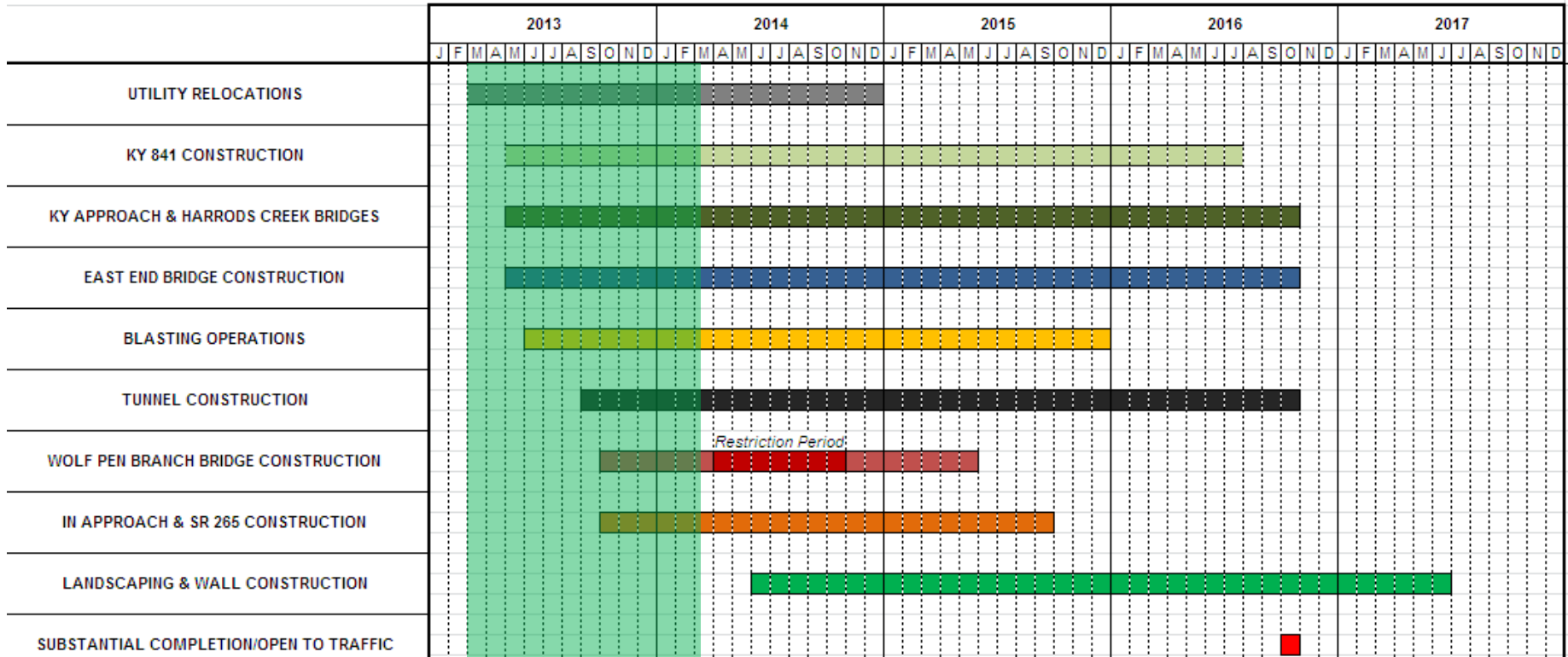


Tunnel Construction Sequence



Tunnel South Portal Top Headings - SB

EEC Timeline



Open to Traffic – Oct 31, 2016



Challenges in 2013

- ❑ **Contractual**
 - ❑ **Completion of PMP elements by Developer**
 - ❑ **Startup of Developer's quality management**
 - ❑ **Alignment of document control procedures**
- ❑ **Stakeholder expectations**
 - ❑ **Local political coordination and input**
 - ❑ **Local/regional business coordination**
 - ❑ **Coordination with neighborhoods**



Meeting the Challenges in 2013

- ❑ **Contractual**
 - ❑ Partnering
 - ❑ Defending the contract
 - ❑ Solving problems at right level
- ❑ **Stakeholder expectations**
 - ❑ Listen
 - ❑ Respond
 - ❑ Be open & transparent



Opportunity



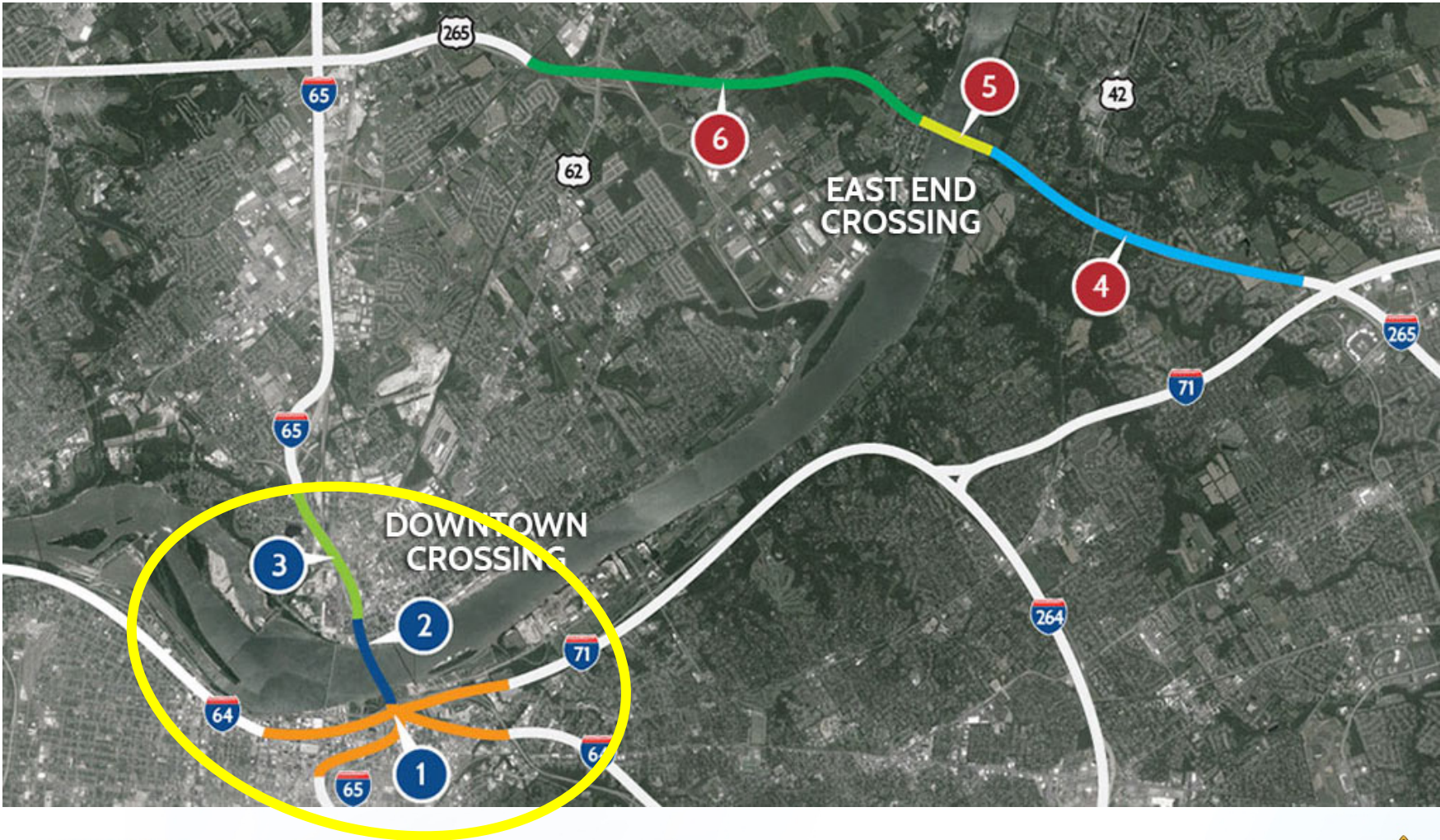


Downtown Crossing

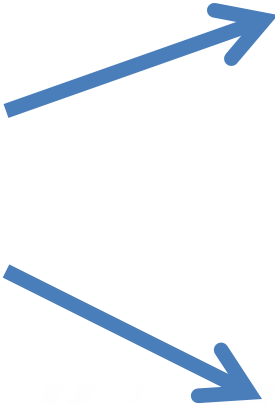
Andy Barber, Project Manager



Location



Design Build Contract Relationships



DESIGN REVIEW AND OVERSIGHT ASSISTANCE CONSULTANTS



The Design Build Team



- Nov 15, 2012—KYTC selected Walsh Construction as Design Build Team
 - \$860 Million Bid
 - Dec. 9, 2016 Substantial Completion Date
- Dec 28, 2012—Notice to Proceed Issued

The Start of Construction

- June 2013: Community groundbreaking is held
- July 2013: Construction begins in earnest
- December 2016: Substantial Completion



Section 3

Section 2

Section 1



Section 1: Kennedy Interchange

Reconstruct the Kennedy Interchange in Downtown Louisville at the convergence of I-64, I-65 and I-71



Section 1 Progress

- New, wider I-65 corridor is taking shape in downtown Louisville
- Piers and MSE wall are going up
- Traffic is expected to shift to the new structures in the middle of 2014



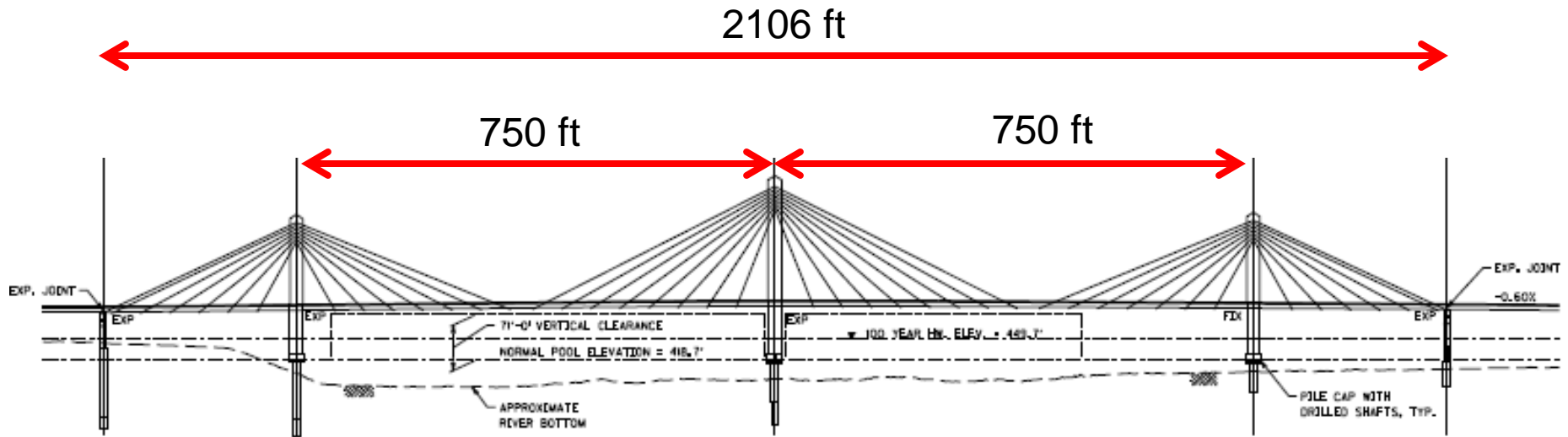
Main St. Gateway



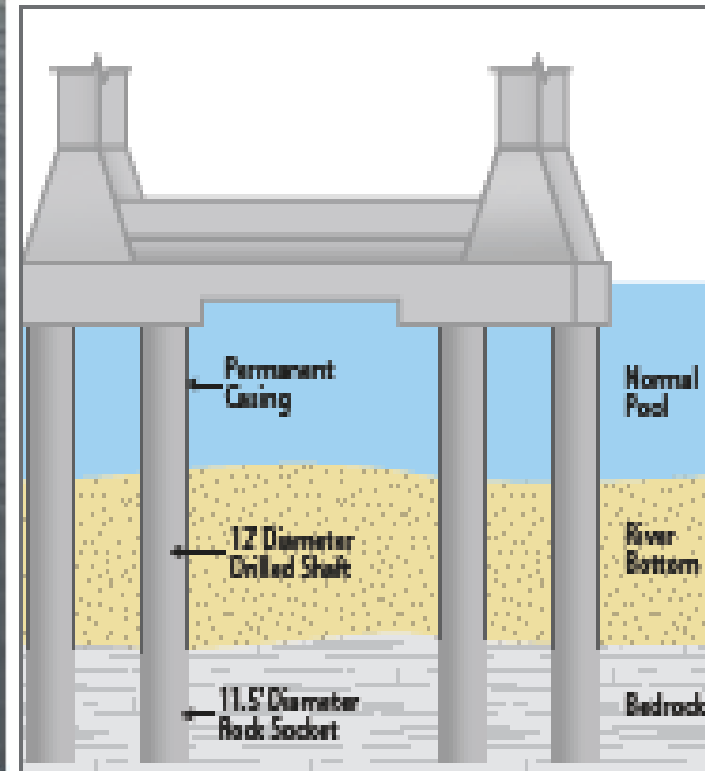
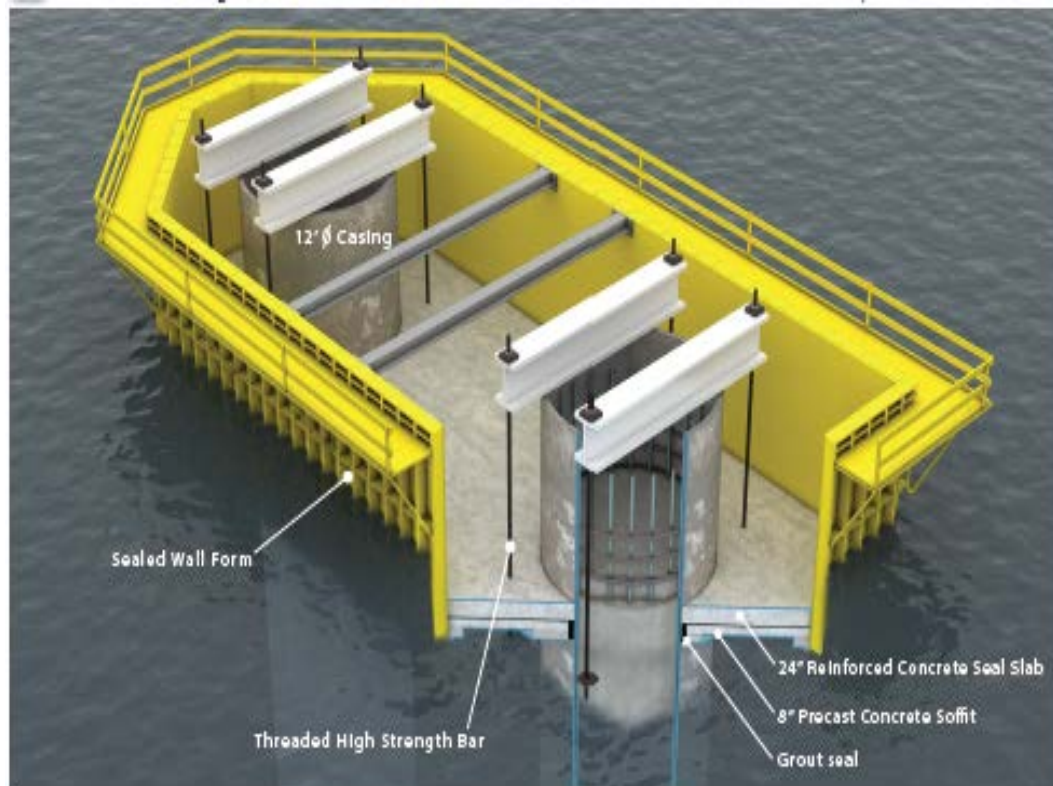
Section 2: New I-65 Northbound Bridge



Cable Stay Bridge Layout



Waterline Footing



Bridge Tower 5



Section 2 Progress

- Work is well underway on the piers for the new bridge
- Foundation work moved above the surface of the Ohio River in late September as crews set a tub that will form a portion of a waterline footing
- The first mass concrete pour of the project happened in late October. More than 500 cubic yards of concrete filled the tub



The New Bridge



Section 3: Indiana Downtown Approach



Section 3 Progress

- Traffic shifted to the new Exit 0 ramp (Downtown Jeffersonville) in early December, it will be in use into 2016
- The first concrete bridge beams of the project were set at 6th and Broadway in December
- There are a total of 870 beams to place for the Downtown Crossing



Court Ave. Gateway



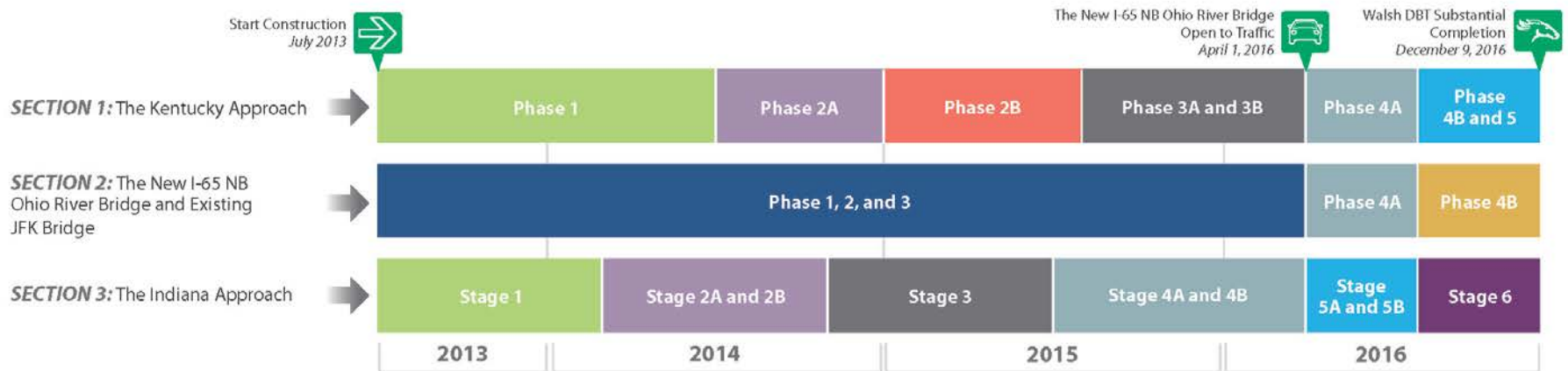
Project Details

- More than 500 employees and subcontract workers are working through Walsh Construction
- 62 new overpasses and bridges and more than 60 retaining walls
- Nearly 540,000 feet of piling and more than 440,000 tons of asphalt will be used



Construction Timeline

- Teams working on all three sections simultaneously
- 3 ½ year construction plan cut more than 18 months from estimates
- New I-65 NB bridge to open to two-way traffic by April 2016
- Downtown Crossing completed by December 2016



Challenges in 2013

- ❑ **Financing of Downtown Crossing**
 - ❑ **Secured a TIFIA loan**
 - ❑ **Sold toll revenue bonds**
- ❑ **Stakeholder Expectations**
 - ❑ **Both sides of the river**
 - ❑ **Local political coordination and input**
 - ❑ **Local/Regional business coordination**
 - ❑ **Coordination with neighborhoods**



Questions?

Visit the Project Website

www.kyinbridges.com

