



Published in final edited form as:

Nat Commun. 2013 ; 4: 1847. doi:10.1038/ncomms2853.

InVERT molding for scalable control of tissue microarchitecture

KR Stevens¹, MD Ungrin^{2,3,4}, RE Schwartz^{1,5}, S Ng⁶, B Carvalho⁶, KS Christine¹, RR Chaturvedi⁷, CY Li⁸, PW Zandstra^{2,3,4,9,10}, CS Chen⁷, and SN Bhatia^{1,11,12,13}

¹Harvard-MIT Division of Health Sciences and Technology, Massachusetts Institute of Technology, Cambridge, MA 02139

²Institute of Biomaterials and Biomedical Engineering, University of Toronto, Toronto, Ontario, Canada

³The Donnelly Centre for Cellular and Biomolecular Research, University of Toronto, Toronto, Ontario, Canada

⁴McEwen Centre for Regenerative Medicine, University Health Network, Toronto, Ontario, Canada

⁵Division of Medicine, Brigham and Women's Hospital, Boston, MA 02115

⁶Department of Biological Engineering, Massachusetts Institute of Technology, Cambridge, MA 02139

⁷Department of Bioengineering, University of Pennsylvania, Philadelphia, PA 19104

⁸Department of Chemical Engineering, Massachusetts Institute of Technology, Cambridge, MA 02139

⁹Heart & Stroke Richard Lewar Centre of Excellence, University of Toronto, Toronto, Ontario, Canada

¹⁰Department of Chemical Engineering and Applied Chemistry, University of Toronto, Toronto, Ontario, Canada

¹¹Howard Hughes Medical Institute, Cambridge, MA 02139

¹²Department of Electrical Engineering and Computer Science, Massachusetts Institute of Technology, Cambridge, MA 02139

Abstract

Complex tissues contain multiple cell types that are hierarchically organized within morphologically and functionally distinct compartments. Construction of engineered tissues with

¹³To whom correspondence should be addressed. sbhatia@mit.edu. Address: M.I.T. 77 Massachusetts Ave. Bldg. 76-453. Cambridge, MA 02139. Telephone: (617) 324-0221.

Postal addresses for all authors:

Kelly Stevens, Robert Schwartz, Shengyong Ng, Brian Carvalho, Kathleen Christine, Cheri Li, Sangeeta Bhatia: M.I.T. 77 Massachusetts Ave. Bldg. 76-453. Cambridge, MA 02139.

Mark Ungrin: HMRB 410, 3330 Hospital Drive NW, Calgary, AB T2N 4N1

Ritika Chaturvedi, Chris Chen: 510 Skirkanich Hall, 210 South 33rd Street, Philadelphia, PA 19104

Peter Zandstra: 160 College Street, Office # 1116, University of Toronto, Toronto, Ontario M5S 3E1

AUTHOR CONTRIBUTIONS

Author contributions: K.R.S., R.E.S., P.W.Z., C.S.C., S.N.B. designed research; K.R.S., M.D.U., R.E.S., S.N., B.C., R.C., and C.Y.L. performed research; M.D.U., P.W.Z., K.S.C. contributed new reagents/analytic tools; K.R.S., B.C., and S.N.B. analyzed data; and K.R.S., M.D.U., C.S.C., and S.N.B. wrote the manuscript.

COMPETING INTERESTS

The authors declare no competing interests.

optimized tissue architecture has been limited by tissue fabrication techniques, which do not enable versatile microscale organization of multiple cell types in tissues of size adequate for physiologic studies and tissue therapies. Here we present an ‘Intaglio-Void/Embed-Relief Topographic (InVERT) molding’ method for microscale organization of many cell types, including induced pluripotent stem cell (iPS)-derived progeny, within a variety of synthetic and natural extracellular matrices and across tissues of sizes appropriate for *in vitro*, pre-clinical, and clinical studies. We demonstrate that compartmental placement of non-parenchymal cells relative to primary or iPS-derived hepatocytes, compartment microstructure, and cellular composition modulate hepatic functions. Configurations found to sustain physiologic function *in vitro* also result in survival and function in mice for at least four weeks, demonstrating the importance of architectural optimization prior to implantation.

Introduction

Inadequate supply of functional human tissues precludes clinical transplantation for most organ failure patients. Artificial organs and tissues may offer alternatives or bridges to organ transplant. To date, engineered tissues that have been applied clinically (e.g., bladder and skin)^{1,2} contain few cell types and have relatively simple organizational structure. In contrast, construction of complex, highly metabolic tissues such as liver, kidney, and heart has seen little success³. Complex tissues are spatially organized across functionally and morphologically distinct but interacting compartments (e.g., the parenchyma and vasculature). At the microscale, these compartments are often arranged with precise microstructural control in locally-repeated functional units (e.g., a hepatic cord and associated sinusoid). Such hierarchical positioning of cells within the tissue, or ‘tissue architecture,’ ultimately defines the cell-cell contacts and paracrine signaling gradients that drive cellular phenotype and function of each tissue unit, and the collective activity contributed by all units yields large-scale physiologic tissue function. Construction of complex engineered tissues requires an understanding of how multi-compartmental tissue architecture dictates whole tissue function both *in vitro* and after implantation. For such experiments, engineered tissues must also be of adequate mass (contain many repeating microscale tissue units) to generate robust functions measurable by tissue-level experiments and/or to result in a therapeutic outcome. The ability to rapidly organize multiple cell types with microscale precision into units that combine to generate tissues of scalable sizes has remained elusive.

To date, several technologies have been developed to position cells at the microscale within engineered tissues, such as dielectrophoresis, photopatterning (including two-photon based photochemical patterning), cellular bioprinting, and topographic molding⁴⁻¹⁵. These technologies enable microscale positioning of cells within 3D engineered tissues, but they often necessitate trade-offs between microscale patterning resolution, tissue size, and/or fabrication time, and they are frequently compatible only with specific biomaterials. Multicellular patterning technologies that are scalable and versatile with regard to biomaterial have the potential to accelerate the development of engineered tissues. Here, we sought to create a platform that 1) enables precise organization of microscale and multi-compartmental tissue structure within tissues of sizes relevant for *in vitro*, pre-clinical, and clinical studies, and 2) is both material- and cell type-independent and therefore widely biologically applicable.

The ‘Intaglio-Void/Embed-Relief Topographic (InVERT) molding’ process described here produced engineered tissues up to 14 cm in diameter, resulted in viable and high-resolution microstructures organized in distinct compartments in several multicellular patterns, was compatible with fibrin, agarose, and polyethylene glycol hydrogel systems, and could be

used to pattern a variety of cell types, including fragile cell types such as induced-pluripotent stem cell derived hepatocyte-like cells (iPS-Heps), which have not been patternable to date^{16,17}. We applied our InVERT technology to probe issues relevant to the translation of engineered liver tissue to the clinic. Specifically, crosstalk between hepatocytes and non-parenchymal cells has been implicated in development, physiological homeostasis, regeneration, and disease (e.g., malignant transformation)¹⁸⁻²¹, but systematic dissection of 3D structure-function cellular relationships has proven challenging due to the lack of robust model systems.

We used InVERT molding to test whether manipulation of tissue architecture modulates physiologic function of primary rat and human hepatocytes or human iPS-Heps *in vitro* and following implantation in rodents. We found that placement of non-parenchymal cells with respect to primary or iPS-derived hepatocytes and optimization of hepatic compartment microstructure and composition modulates hepatic functions. Additionally, architectural configurations found to sustain hepatic function in *in vitro* studies also resulted in prolonged survival and physiologic function in nude mice after transplantation. These results demonstrate the need for the optimization of microstructural architecture in constructing physiologically robust model systems and engineered tissue therapies.

RESULTS

InVERT molding for multicompartamental cellular patterning

We achieved scalable, versatile, and rapid 3D multi-compartmental cellular patterning using an InVERT molding protocol (Fig. 1a). We first produced topographic substrates containing microscale features and replica molded these substrates using poly(dimethylsiloxane) (PDMS) to create topographic ‘intaglio’ cell capture substrates with recessed ‘voids’. Cells were added in solution, isolated in the features of the intaglio cell-capture substrate via centrifugation or sedimentation, and then embedded within a 3D hydrogel. Hydrogels containing the patterned cells were removed from the intaglio substrate and inverted, exposing a ‘relief’ (effectively, the inverted intaglio geometry) such that microscale features containing the first cell population projected from the hydrogel. Subsequently, a pre-polymer solution containing a second cell population was loaded on top of the inverted hydrogel (which serves as a secondary mold) and centrifuged into the features of the relief. Polymerization was triggered to trap and encapsulate cells, yielding a 3D hydrogel containing multiple micropatterned cellular compartments.

To test the scalability and patterning fidelity of substrate-based molding, we created organized arrays of hepatocyte clusters within 3D hydrogels by molding from a PDMS topographic patterning substrate containing pyramidal microwells²² (Supplementary Fig. S1a). We patterned arrays of cellular microstructures within hydrogels to construct tissues with diameters that varied across two orders of magnitude. Sizes of the smallest producible hydrogels were constrained only by the resolution of photopatterning and microfabrication methods. Micropatterned tissues of intermediate size (1.5 cm diameter) were built for subsequent *in vitro* and mouse studies (Fig. 1b, inset). Patterned hydrogels of more clinically relevant scales were also achieved (14 cm in diameter; Fig. 1b). In this large scale example, cell cluster size and wider spacing allowed for macroscopic detection of cellular patterns after hematoxylin staining, and tissues contained over 24,000 arrayed cellular aggregates. These clusters are patterned in a single molding step (rather than serially). Therefore, cluster spacing could be reduced without altering tissue size and the cellular constitution of all clusters is representative of the cell types included in the initial patterning solution.

Scalable gels must also demonstrate fidelity in patterning. We assayed ‘patterning efficiency’, or the percentage of microstructures (here aggregates) successfully patterned in

a macroscopic hydrogel upon its removal from the topographic patterning substrate. In order to detect and count the aggregates present within each hydrogel, we developed a high-throughput, automated large-image scanning and quantitative analysis (Supplementary Fig. S1a-b). We assayed patterning efficiency when 1) cells in media were patterned in the topographic microwell substrate, incubated overnight to promote cadherin and adhesion junction formation, and then embedded in a hydrogel, or 2) cells in a pre-polymer solution were added to the topographic mold and trapped immediately by triggering hydrogel polymerization. Patterning efficiency improved with feature size and reached an average of $88\% \pm 4\%$ (S.E.M.) with pre-aggregation (Supplementary Fig. S1c), whereas immediate trapping of cells achieved $97\% \pm 1\%$ (S.E.M.) for 500 cells per microwell (Supplementary Fig. S1b). Thus, substrate-based molding is efficient and compatible with both pre-aggregation and rapid trapping methods.

To illustrate the versatility of InVERT molding, we utilized topographic patterning substrates that were either 1) custom-produced using specialized engineering technologies, 2) inexpensive and readily available, or 3) high-precision and commercially available. We organized endothelial cells and fibroblasts in four distinct patterns using custom-fabricated substrates with complex topographies (substrates fabricated via computer numerical control micro-milling, Fig. 1c top; laser engraving; Supplementary Fig. S2 top; anisotropic etching of silicon²², Supplementary Fig. S2 bottom), a bicycle reflector purchased in a neighborhood bicycle shop (Fig. 1c middle), and a commercially available pyramidal microwell chip (Aggrewell, Stem Cell Technologies; Supplementary Fig. S2). An ideal patterning technology would be adaptable and modular in nature in order to enable orthogonal combination with other patterning strategies. We therefore tested whether this method is compatible with previous generation engineering technologies as well as multiple material systems. We demonstrated that microorganized cell layers produced separately by substrate-based molding could be stacked manually for multilayer patterning (Fig. 1c bottom). Additionally, since InVERT molding segregates cellular patterning and encapsulation into distinct steps, this process permits cell encapsulation in a range of natural and synthetic materials with diverse properties, gelation triggers, tunability, and general availability and accessibility. For example, InVERT molding could be accomplished using fibrin (gelation by enzymatic polymerization with thrombin; Fig. 1c top), agarose (gelation by temperature-induced chain entanglements, Fig. 1c middle), and polyethylene glycol (gelation by external light-based photopolymerization; highly tunable; Supplementary Fig. S2). The material in which cells are encapsulated determined pattern maintenance prior to cellular self-organization. For example, cells remain patterned for weeks without reorganization in non-degradable PEG gels but began to self-organize over the course of days in highly degradable, low concentration (e.g., 5 mg/ml) fibrin. The time required to perform the InVERT molding inversion step was on the order of minutes, and the time for the entire process depended upon the polymerization time of the material. Additionally, since InVERT molding required no equipment beyond the intaglio topographic substrate and a standard tissue culture centrifuge, parallel and scaled production in a variety of laboratory settings is possible. Together, these results illustrate the versatility of this method for performing rapid multi-compartmental cellular patterning in various orientations and material systems.

Finally, to illustrate the applicability of InVERT molding to numerous biological systems, we patterned multiple parenchymal cell types with a variety of non-parenchymal stromal or endothelial cell types. Since InVERT molding is based on cell sedimentation or centrifugation, this process is robust regardless of cell-specific physical properties that can impact cell patterning in other systems (e.g., size, density, charge). We created multicellular model systems relevant for examining the role of stroma in muscle or cancer biology [Fig. 1d; mouse C2C12 skeletal myoblasts with mouse J2-3T3 fibroblasts, human ovarian

carcinoma cells (OVCAR-8) with stromal mouse embryonic fibroblasts (10T1/2), and human cervical cancer cells (HeLa) with stromal normal human dermal fibroblasts (NHDF)]. Since InVERT molding does not exert forces on cells that would not otherwise be experienced during routine tissue culture, we hypothesized that this technique would be extensible to 'sensitive' cell types that have not been patterned successfully using other methods (e.g., iPS-derived cells). Towards this end, we used InVERT molding to pattern human iPS-Heps with liver endothelial cells (TMNK1; LEC) (Fig. 1d). By visualizing molded cells in all panels of Figure 1 with calcein viability dyes, we observed that most cells examined retained intact plasma membranes (Fig. 1; all panels with fluorescently labeled cells). Quantitative live-dead analysis using calcein-AM (live, green) and ethidium homodimer (red) demonstrated that the percentage of living cells was cell-type dependent and reached $99 \pm 1\%$ (S.E.M.; Supplemental Fig. S3). These results demonstrate that cells, despite physical properties or origin, can be patterned, encapsulated, and demolded using the InVERT molding technique. InVERT molding could thus be useful in a variety of biological model systems and engineered tissue applications.

Multicellular microorganization across distinct compartments

We next sought to further characterize the microscale organization of distinct cellular compartments in 3D engineered tissue constructed using InVERT molding. We used InVERT molding to encase microorganized hepatic aggregates (red; calcein red-orange AM) within an endothelial cell lattice (green; calcein AM) in a monolithic hydrogel (Fig. 2a – 2b). This process produced 1.5 cm diameter hydrogels containing approximately 1000 hepatic aggregates (Fig. 2b, top left; each aggregate composed of ~125 cells). Opaque oblique and cross-sectional renderings of stacked multiphoton images demonstrated that the cellular microstructures in both compartments spanned a thickness of approximately $130 \mu\text{m}$ (Z direction; Fig. 2b, middle and bottom). Unlike systems that create multicellular patterning by stacking separate layers, hepatic and endothelial compartments exhibit substantial Z-plane overlap in the InVERT molded tissue (Fig. 2b, middle). Compartments do not overlap in the X-Y plane (Fig. 2b, middle). Z-plane overlap can be reduced or removed by altering cell concentration in each compartment (Fig. 2b, bottom left).

Different signaling activators and inhibitors are known to act across varying distances, but relative contributions of specific factors responsible for such differences have not been elucidated due to *in vivo* model system complexity²³⁻²⁵. A 3D system that precisely places two cell populations at varying distances could enable previously impossible *in vitro* interrogation of distance-reliant multicellular interactions. Here, edge-to-edge spacing between tissue compartments was controlled by altering the topography of the intaglio patterning substrate used for InVERT molding (Fig. 2b, bottom left). The distance between each cellular aggregate and its closest endothelial neighbor (Fig. 2b, bottom right; dotted white lines) followed non-overlapping Poisson distribution for different spacing configurations (Fig. 2b, bottom). Average edge-to-edge distances were $116 \pm 2 \mu\text{m}$ (S.E.M.) and $366 \pm 4 \mu\text{m}$, respectively (S.E.M., $p < 0.01$, Student's t-test), which are relevant for studying intercellular communication via soluble signals^{23,26}. Together, these results demonstrate the ability to control inter-compartmental spacing and microorganization of multiple cell types across distinct tissue compartments using InVERT molding.

Altering microstructure and composition within a compartment

Complex tissues are hierarchically organized such that each tissue compartment is further organized at both the microstructural and multicellular level. Therefore, we tested whether InVERT molding could be applied to fine-tune the composition of microtissue units within a given compartment. Specifically, we refined the hepatic compartment produced during the initial Intaglio-Void-Embed portion of the InVERT molding protocol without adding a

second cell population ('relief' phase). Primary rat hepatocytes were seeded in patterning substrates at densities of 10 – 500 cells per microwell and incubated overnight. The combined use of oblique microwell side-walls and complete surface tiling resulted in collection of all cells within a defined volume followed by aggregate formation. Following aggregate encapsulation, hydrogels were imaged to quantify the sizes of resulting microstructures using our automated platform (Supplementary Fig. S1). Varying hepatocyte seeding density produced distinct Poisson distributions of aggregate size (Fig. 2c). Aggregates formed from 10, 100, and 500 cells per microwell had average cross-sectional area of $50 \pm 1 \times 10^2 \mu\text{m}^2$, $145 \pm 2 \times 10^2 \mu\text{m}^2$, and $590 \pm 5 \times 10^2 \mu\text{m}^2$ (S.E.M.), respectively. Immunohistological analysis of hepatocyte aggregates demonstrated distinct morphologies were obtained according to the number of cells seeded. Specifically, aggregates created from 10 or 100 hepatocytes contained intact intercellular junctions, whereas cells in larger aggregates remained isolated and dispersed (Fig. 2c, right; cytokeratin, green. Note scale bar is 50 μm for all histological images). To further modulate multicellular composition in a given micropatterned cellular compartment, we generated hydrogel-encapsulated 'hetero-aggregates' by seeding a mixed population of hepatocytes and mural J2 fibroblasts ('fibroblasts') and encapsulating resulting aggregates in hydrogels (Fig. 2d). Multiphoton imaging of these hydrogels demonstrated that fibroblasts expressing mCherry (red) were intercalated throughout the hepatic aggregates (green, calcein-AM labeled Fig. 2d). Taken together, these results demonstrate the ability to modulate both microstructure and multicellular composition of units within a given tissue compartment using InVERT molding.

Organization of endothelial cells impacts tissue function

We next sought to demonstrate the biological applicability of InVERT molding. We tested whether varied positioning of an endothelial cell compartment would affect hepatic parenchymal tissue function since endothelial cells can modulate parenchymal functions in both health and disease via the release of 'angiocrine' factors^{20,27}. Liver sinusoidal endothelial cells (green) were patterned either directly into microwells adjacent to hepatic aggregates (red; 'juxtaposed' conformation) prior to hydrogel encapsulation or in a compartmentally distinct cellular lattice ('paracrine' conformation) via InVERT molding (Fig. 3a, left). Cell numbers of each individual population were held constant in all hydrogels. Patterning endothelial cells in a paracrine conformation enhanced albumin secretion, a surrogate measure of hepatic function, over 2-fold compared to patterning endothelial cells in juxtaposed conformation (Fig. 3a, center). Hepatic aggregates patterned without endothelial cells exhibited similar functional activity to those patterned in 'paracrine' conformation (Supplemental Fig. S4). These findings demonstrate that varying the microorganization of the endothelial compartment can alter the hepatic functions of engineered tissues.

Organization of stromal compartment alters iPS-Hep function

Human iPS cells have potential for use in *in vitro* model systems as well as translatable human cell-based tissue therapies. In the context of the liver, human hepatocyte-like cells have recently been generated from iPS and used in 2D model systems^{16,17}, but optimal architectural parameters for organizing these cells in a 3D setting have not been elucidated. We sought to use InVERT molding to dissect multicellular geometrical conformations necessary for the maintenance of hepatic iPS-Hep function. We first tested whether patterning of liver sinusoidal endothelial cells in juxtaposed or paracrine conformation modulates iPS-Hep function and found that, similar to primary hepatocytes, patterning in paracrine conformation trended towards enhanced hepatic function, though these results were not significant. Next, iPS-Heps (red) were seeded at a density of 100 cells per microwell, and stromal fibroblasts (green; constant number for all hydrogels) were patterned

in a compartmentally distinct lattice ('paracrine' conformation'), adjacent to iPS-Hep aggregates that had already compacted ('juxtaposed' conformation), or directly into microwells with iPS-Heps to create a heteroaggregate ('interpenetrating' conformation) (Fig. 3b). Direct patterning of stromal cells to form heteroaggregates ('interpenetrating') resulted in optimal hepatic function (Fig. 3b), suggesting that local paracrine or direct contact signals with the stroma are important for the function or maturation of iPS-Heps (Fig. 3b).

Microstructure and multicellular composition impact function

In addition to patterning cells between compartments, we used InVERT molding to test whether alterations in the microstructure and multicellular composition of aggregates within the parenchymal compartment might further impact engineered liver tissue function. We altered parenchymal compartment microstructure by creating hydrogels with 10, 100, or 500 hepatocytes per homotypic aggregate. Hepatic albumin secretion per hepatocyte was dependent on the number of cells plated per microwell, and function began to decline by 4 days post-seeding in each case (Fig. 4a). After 4 days in culture, microtissues containing 100 hepatocytes per aggregate produced 14-fold greater albumin per hepatocyte than those formed by seeding 500 hepatocytes per aggregate (Fig. 4a). These results were notable given the morphological differences between aggregates containing 100 or 500 hepatocytes (Fig. 2c). We hypothesized that additional control of multicellular composition within the parenchymal compartment would further stabilize tissue function, as has been shown previously in other model systems^{21,28}. Indeed, the inclusion of hepatocyte-fibroblast heteroaggregates in patterned tissues resulted in significant enhancement and prolongation of hepatic functions to at least 12 days in a dose-dependent manner (Fig. 4b). These results demonstrated that, in addition to relative compartmental location, the microstructure and multicellular composition of the units within a given compartment (here, the parenchymal compartment) significantly impacts engineered tissue function. Together, our results demonstrate the biological importance of hierarchical architectural optimization when constructing engineered tissues.

Microorganization modulates tissue function *in vivo*

Successful clinical translation of complex engineered tissue will require the maintenance of highly functional parenchyma following tissue implantation. We hypothesized that tissue conformations that resulted in sustain tissue function *in vitro* would also sustain tissue function *in vivo*. To test this hypothesis, we transduced primary rat hepatocytes with a lentivirus in which a modified albumin promoter²⁹ drives the expression of firefly luciferase, created patterned engineered liver tissues according to the specifications that produced differing hepatic functions in our *in vitro* studies (i.e., 100 vs. 500 hepatocytes per aggregate and +/- fibroblast in aggregates with 100 hepatocytes), implanted the resulting tissues in the intraperitoneal (IP) space of nude mice, and monitored bioluminescence of the grafted tissues. Consistent with our *in vitro* observations, the number of hepatocytes per aggregate augmented tissue function over 4-fold by five days after implantation and was optimal at 100 hepatocytes per aggregate (Fig. 4c). The addition of fibroblasts enhanced hepatic function 2–3 fold starting at day 15 and maintained albumin secretion for at least four weeks post-implantation (Fig. 4d).

We hypothesized that since this method enables patterning of delicate cell types, patterned tissues containing clinically relevant, cryopreserved human hepatocytes would survive and function *in vitro* and *in vivo*. We found that similar to tissues containing rat hepatocytes, tissues with human hepatocytes that contained fibroblasts exhibited secreted over 33-fold greater albumin by day 6 days compared to those containing only hepatocytes *in vitro* (Supplemental Fig. S5). Human hepatocytes expressing luciferase under the control of a

modified albumin promoter were then patterned in tissues that contained heteroaggregates of 100 hepatocytes +/- fibroblasts, and implanted in the IP space of nude mice. Histological examination of explanted human hepatocyte tissues demonstrated that patterned arrays of hepatic aggregates were generally retained at one week post-implantation (Fig. 4e, left, hematoxylin and eosin). Arginase-1 (ARG-1) immunostaining identified human hepatocytes within the aggregates, which self-sorted to the center of each aggregate in tissues that contained fibroblasts by one week post-implantation (Fig. 4e, right). Gross examination upon resection of engineered tissues at day 7 demonstrated that 74% of implants adhered to host tissue (14 of 19 tissues, Supplemental Fig. S6), and Ter-119 positive red blood cells were identified in these explants. The average distance from Ter-119 positive blood and the nearest ARG-1 positive-hepatic aggregate was $119 \pm 32 \mu\text{m}$ (S.E.M.; Supplemental Fig. S6), suggesting that nutrient transport in the system occurred via diffusion from de novo vessels derived from the host to the hepatic aggregates. Similar to rat hepatic tissues, hepatic function in aggregates with 100 hepatocytes was sustained by the presence of fibroblasts (Fig. 4f). Thus, optimal cellular architectures that sustained hepatic functions *in vitro* to day 12 also resulted in superior physiologic tissue function for at least four weeks after transplantation in pre-clinical animal models.

DISCUSSION

Our InVERT molding platform rapidly yields high-resolution multicellular microstructures that can be patterned in distinct compartments in 3D hydrogels. This process offers numerous advantages over previous systems. Substrate-based molding is scalable and can produce tissue sizes ranging over two orders of magnitude without significantly altering microstructure resolution or assembly time. This process can be used to pattern either 'pre-aggregated' cells with established intercellular junctions necessary for normal physiologic functions in most tissues, or to immediately 'trap' cells, akin to other patterning technologies. Importantly, this method is compatible with customizable topographic patterning substrates and material systems employed in specialized engineering and biomaterials research laboratories as well as with materials commonly found in basic biological laboratories. Further, InVERT molding is based on gravity or centrifugation-enhanced sedimentation and therefore appears to cause minimal cell damage, even to otherwise sensitive cell types. As the InVERT molding process also does not require tedious manual alignment of cell layers and can be parallelized, production of patterned hydrogels is rapid. Finally, InVERT molding enables the multi-level hierarchical optimization of tissue structure both within and between cellular compartments. Together, these features of InVERT molding uniquely enable large-scale biological studies that probe how complex tissue structure dictates cellular behavior.

Vascular endothelial and stromal cells play important roles in tissue development, homeostasis, and function in health and disease^{18-20,27,30}. Here, we found that the structural organization of liver endothelial and stromal cells modulates the degree to which they support and stabilize hepatic parenchyma. For endothelial cells, possible mechanisms include hepatic interaction with inhibitory endothelial cell surface molecules (e.g., cadherin), extracellular matrix molecules, or short-range or matrix-sequestered soluble factors in juxtaposed but not paracrine conformation. For tissues containing stromal cells and iPS-Heps, interactions likely occur via local paracrine or direct contact signals since intimate contact between iPS-Heps and stromal cells is required throughout the entire aggregate ('interpenetrating' conformation). It is possible that short range molecular mediators of interactions between adult primary hepatocytes and J2 stromal cells, such as decorin and truncated-cadherin could impact iPS-Hep function^{31,32}. Together, our studies suggest that InVERT molding may be useful for the methodical dissection of the relative contribution of multi-factorial signals (e.g., cell contact, paracrine signals, extracellular

matrix) on the differentiation state or signaling activity of stem cell progeny or tissue organoids.

Numerous techniques have been used to create hepatic spheroids with intact intercellular contacts, structural polarity, functional bile canaliculi, and hepatic functions³³⁻³⁸. Our pyramidal microwell-based patterning system improves cell capture efficiency due to lack of dead space between microwells, allows precise control of cell number seeded per microwell and resultant aggregate diameter, and prevents aggregate fusion and loss over time by capturing aggregates at defined locations in 3D gels. This progress allowed us to demonstrate that structural refinement of engineered tissues must be performed not only between but also within tissue compartments.

Recent studies have shown that the inclusion of multiple cell types or further microvascular patterning in engineered tissues can improve survival and/or function after engraftment^{29,39-41}. To our knowledge ours is the first study to demonstrate the importance of optimizing multicellular parenchymal structure prior to implantation to maximize tissue function post-transplant. Although we demonstrate this principle using both clinically relevant iPS-Heps and cryopreserved human hepatocytes, ultimate application in clinical therapy will require additional advances. For example, Z direction thickness of InVERT molded tissue is limited by nutrient diffusion since tissues do not contain conduits for fluid flow, and thus upon implantation tissues relies on vascularization by the host. Combination of the InVERT system with other technologies that improve graft vascularization^{13,42} could enable construction of thicker tissues and enhanced function of metabolically active hepatocytes. Additionally, it will be necessary to demonstrate long-term survival of grafted cells and rescue of missing liver functions in genetic liver disease or acute liver failure model systems.

The InVERT molding platform described here may impact the creation of model systems for studying basic biology as well as lead to the development of specific architectural 'design specifications' for the construction of clinically relevant engineered tissue therapies. This technology could be useful in diverse fields ranging from regenerative medicine to cancer pathogenesis.

METHODS

Microfabrication of intaglio patterning substrates

Square pyramidal micro-wells were fabricated as described previously²² or purchased (Aggrewell, Stem Cell Technologies; 400 or 800 μm side-wall dimension of each square pyramidal micro-well). For branching network substrates, patterns were first generated by computer numerical control (CNC) milling (Taig DSLS3000) in high temperature epoxy (Conapoxy FR1080, Cytec) and then cast in poly(dimethylsiloxane) (PDMS). For spiral substrates, patterns were laser-engraved in acrylic (Versalaser VLS3.50, Universal Laser Systems) and then cast in PDMS.

Cell culture and labeling

See Supplementary Methods.

Hydrogel materials

For agarose gels, ultra-pure low-melting point agarose (Invitrogen) was dissolved in DMEM (2% w/v). Liquid agarose solution was kept in a water bath at 37°C until time of cell encapsulation and polymerization, at which point it was pipetted over patterned cells in the intaglio substrate and cooled at 4°C to initiate gelation. Fibrin hydrogels were prepared by

adding human thrombin (Sigma; 1.25 U/ml final concentration) to bovine fibrinogen (Sigma; 20 mg/ml final concentration) at the time of polymerization or by suspending cells in fibrinogen at the appropriate concentration, centrifuging into the secondary relief mold, and polymerizing via the addition of thrombin. For PEG hydrogels, cells were suspended in PEG pre-polymer solution, centrifuged into the secondary relief PEG material template, and then exposed to UV light from a spot curing system with collimating lens (320 – 390 nm, 90mW/cm², 30 seconds, EXFO lite). PEG pre-polymer solution was composed of PEG-diacrylate (20kDa at 10% (w/v); Laysan Bio) and 0.1% (w/v) Irgacure 2959 (Ciba).

Fabrication of micropatterned engineered tissues

For InVERT molding, the first cell population was either centrifuged or gravity settled (for hydrogels > 10 cm in diameter) into the recessed features of the intaglio patterning substrate. A silicon gasket defining the XYZ dimensions of the resultant hydrogel was placed over the cells arrayed in the patterning substrate. For 'pre-aggregation' based-encapsulation, cells were incubated overnight. The following day, the hydrogel material was pipetted over the cells and polymerized. For 'immediate trapping', cells were spun into the patterning substrate directly in pre-polymer solution and then trapped in place by polymerization. Molded 3D hydrogels containing the first patterned cell type were removed from the intaglio substrate and inverted, exposing 'relief' features in the molded hydrogel. The inverted relief gel was placed into a second gasket system, and a new cell population in pre-polymer solution was centrifuged into place. Polymerization was triggered to entrap cells, resulting in the formation of a single hydrogel containing two distinct and micro-organized cellular compartments.

For studies demonstrating the application of InVERT molding with many cell types (Figure 1D), the first cell type was seeded into 'intaglio' microwell templates (microwell side wall dimensions 400 μm at a concentration of 100 cells per microwell) prior to material encapsulation. The second 'relief' cell type was patterned using InVERT molding such that final cell ratio was 1: 0.5 for cell type 1: cell type 2.

For studies of hepatocyte and J2 fibroblast microorganization, 10 – 500 hepatocytes per microwell and corresponding J2 fibroblasts at ratios 1: 1 or 1: 2 were centrifuged into microwell templates (microwell side wall dimensions 400 μm). The following day, resultant aggregates were encapsulated in either agarose or fibrin hydrogels. For studies of multi-compartmental organization, 100 primary rat or iPS-Heps and 25 J2 fibroblasts were patterned per microwell, incubated overnight, and then encapsulated in fibrin. Liver endothelial cells were then patterned using InVERT molding in either juxtaposed or paracrine conformations at a final concentration of two endothelial cells per hepatocyte. For multi-compartmental studies with iPS-Heps and stromal cells only, 100 iPS-Heps were patterned per well and J2 fibroblasts were patterned in various conformations at a ratio of 1: 1 iPS-Hep: J2 Fibroblast. For studies in which inter-compartmental distance was varied, 100 J2 fibroblasts expressing GFP were patterned in microwells with sidewall dimensions of 400 or 800 μm . Liver endothelial cells were then patterned using InVERT molding, and hydrogels were imaged using live imaging methods described below. For hydrogels of 14 cm diameter, J2 fibroblasts were fixed and stained with hematoxylin prior to encapsulation for macroscopic visualization. 800 fibroblasts per well were gravity settled into a 14 cm diameter patterning substrate containing microwells with side wall dimensions of 800 μm . Cells were encapsulated in fibrin gel and imaged with a Nikon digital SLR camera.

For biologic experimentation, a quality control step was introduced during manufacturing at the time of demolding such that gels with < 80% patterning efficiency were discarded immediately after demolding and prior to further biologic study. Thus, although the same number of gels was initially patterned per group, biologic experiments sometimes had

groups with slightly different 'n'. In contrast, for engineering characterization studies (e.g., analysis of patterning efficiency), all gels were included in characterization so as to capture the overall variability in tissue patterning.

Microscopy and automated image scanning

Imaging of hydrogels containing live cells stained with calcein, AM or calcein red-orange, AM (Invitrogen) was performed on a Nikon Eclipse TE200 or Olympus FV1000 Multiphoton Laser Scanning Confocal Microscope. For epifluorescence images, image viewing and analysis was performed in ImageJ (NIH) and Photoshop (Adobe). For multiphoton images, Z dimension between each slice was 1 – 2 μm . Images were stacked and merged for XYZ extended focus images, XZ sections, and movies using Volocity 3D Image Analysis software (PerkinElmer).

Automated image scanning of hydrogels containing microorganized cells was performed using a Nikon Eclipse Ti microscope equipped with an automated stage-scanning system. For studies determining patterning efficiency, hydrogels of 1.5 cm diameter containing micro-patterned cells were scanned and analyzed. Serial 4X magnification images were obtained and stitched automatically using NIS Elements software (Nikon; version 3.2). Image analysis and aggregate size quantification was performed using NIS Elements software.

Immunohistochemistry

For immunostaining of cellular aggregates, aggregates were collected from microwells, fixed in methanol and 10% acetic acid and gently pelleted in eppendorf tubes. Aggregates were resuspended in molten histogel (Thermo Scientific), repelleted, and placed on ice for histogel solidification. Histogel pellets were processed, embedded, and sectioned for immunohistochemistry. Sections were stained with a primary antibody against pan-cytokeratin (1:800, Sigma) followed by secondary Alexa 488-conjugated goat-antimouse antibody (Jackson ImmunoResearch). Images were obtained using a Nikon Eclipse TE200 microscope. Tissue sections from *in vivo* studies were stained with primary antibodies against arginase-1 (1:400, Sigma) and/or Ter-119 (1:100, BD Pharmingen) followed by Alexa 594 or 488-conjugated donkey anti-rabbit and donkey anti-rat secondary antibodies.

Biochemical assays to assess hepatocyte function

Rat albumin in sampled media was quantified by enzyme-linked immunosorbant assay using a sheep anti-rat albumin antibody and rat albumin ELISA kit (Bethyl labs).

***In vivo* implantation and assessment of engineered tissues**

All animal procedures were approved by The Committee for Animal Care in the Department of Comparative Medicine at Massachusetts Institute of Technology. Taconic NCr nude mice (female, 6 – 8 weeks old) were anesthetized using isoflurane, and engineered tissues were placed into the intraperitoneal space on the day following tissue fabrication via a 1 cm incision. The incision was closed aseptically, and animal recovery from surgery was monitored. Animals were administered 0.1 mg/ml buprenorphine every 12 hours for three days following surgical procedures.

To enable noninvasive imaging of hepatic function and survival of engineered tissues, hepatocytes were transduced in suspension culture immediately after isolation with a lentiviral vector expressing firefly luciferase under the human albumin promoter ((pTRIP.Alb.IVSb.IRES.tagRFP-DEST, gift of Charles Rice, The Rockefeller University) prior to engineered tissue fabrication. For viral transduction, concentrated virus was diluted 1:5 into hepatocyte media containing HEPES buffer (20mM; Invitrogen) and polybrene

(4 μ g/ml, Invitrogen) in 6 well ultra-low attachment plates (Corning). To aid in the establishment of intercellular junctions during viral transduction, hepatocytes were added to transduction mixture for a final concentration of 1 million hepatocytes/ml such that small clumps of ~2-5 cells formed over the course of the 5 hour viral transduction (final viability after transduction ~75%). Immediately prior to imaging, mice were injected intraperitoneally with 250 μ L of 15 mg/mL D-Luciferin (Caliper Life Sciences) and imaged using the IVIS Spectrum (Xenogen) system and Living Image software (Caliper Life Sciences). Upon sacrifice, engineered tissues were retrieved, fixed in 4% paraformaldehyde, processed, embedded, and sectioned for immunohistochemistry.

Statistical Analysis

Experiments were independently repeated three times. All data in graphs are expressed as the mean \pm standard error or standard deviation as listed in the text or figure legends. For normally distributed data, statistical significance was determined using Student's t-test for two-way comparisons or one-way ANOVA followed by Tukey's post hoc test for group comparisons. Otherwise non-parametric Mann Whitney (for two-way comparisons) or the Kruskal-Wallis test followed by Dunn's Multiple Comparison (for group comparisons) was used. Alpha was set to 0.05 for all comparisons.

Supplementary Material

Refer to Web version on PubMed Central for supplementary material.

Acknowledgments

This work was supported by NIH (EB008396, DK56966) and partially by the Cancer Center Support (core) Grant P30-CA14051 from the National Cancer Institute. S.N.B. is an HHMI investigator. Individual fellowship support was provided by a NIH NRSA (K.R.S., 1F32DK091007; K.S.C., 1F32DK095529; R.C., 5T32AR007132-35), NSF GRD (C.Y.L.), and a McEwen Centre for Regenerative Medicine fellowship (M.D.U.). We thank Eliza Vasile, Charlie Whittaker, and Scott Malstrom of the Swanson Biotechnology Center as well as Heather Fleming, David Wood, Lia Ingaharro for technical help and discussions.

REFERENCES

1. MacNeil S. Progress and opportunities for tissue-engineered skin. *Nature*. 2007; 445:874–880. [PubMed: 17314974]
2. Atala A. Engineering organs. *Curr Opin Biotechnol*. 2009; 20:575–592. [PubMed: 19896823]
3. Mikos AG, et al. Engineering complex tissues. *Tissue Eng*. 2006; 12:3307–3339. [PubMed: 17518671]
4. Albrecht DR, Underhill GH, Wassermann TB, Sah RL, Bhatia SN. Probing the role of multicellular organization in three-dimensional microenvironments. *Nat Methods*. 2006; 3:369–375. [PubMed: 16628207]
5. Liu Tsang V, et al. Fabrication of 3D hepatic tissues by additive photopatterning of cellular hydrogels. *FASEB J*. 2007; 21:790–801. [PubMed: 17197384]
6. Underhill GH, Chen AA, Albrecht DR, Bhatia SN. Assessment of hepatocellular function within PEG hydrogels. *Biomaterials*. 2007; 28:256–270. [PubMed: 16979755]
7. Wylie RG, et al. Spatially controlled simultaneous patterning of multiple growth factors in three-dimensional hydrogels. *Nat Mater*. 2011; 10:799–806. [PubMed: 21874004]
8. Culver JC, et al. Three-dimensional biomimetic patterning in hydrogels to guide cellular organization. *Adv Mater*. 2012; 24:2344–2348. [PubMed: 22467256]
9. Kloxin AM, Kasko AM, Salinas CN, Anseth KS. Photodegradable hydrogels for dynamic tuning of physical and chemical properties. *Science*. 2009; 324:59–63. [PubMed: 19342581]

10. DeForest CA, Anseth KS. Cytocompatible click-based hydrogels with dynamically tunable properties through orthogonal photoconjugation and photocleavage reactions. *Nat Chem.* 2011; 3:925–931. [PubMed: 22109271]
11. Mironov V, et al. Organ printing: tissue spheroids as building blocks. *Biomaterials.* 2009; 30:2164–2174. [PubMed: 19176247]
12. Jakab K, et al. Tissue engineering by self-assembly and bio-printing of living cells. *Biofabrication.* 2010; 2:022001. [PubMed: 20811127]
13. Miller JS, et al. Rapid casting of patterned vascular networks for perfusable engineered three-dimensional tissues. *Nat Mater.* 2012; 11:768–774. [PubMed: 22751181]
14. Nelson CM, Vanduijn MM, Inman JL, Fletcher DA, Bissell MJ. Tissue geometry determines sites of mammary branching morphogenesis in organotypic cultures. *Science.* 2006; 314:298–300. [PubMed: 17038622]
15. Tekin H, et al. Responsive micromolds for sequential patterning of hydrogel microstructures. *J Am Chem Soc.* 2011; 133:12944–12947. [PubMed: 21766872]
16. Schwartz RE, et al. Modeling hepatitis C virus infection using human induced pluripotent stem cells. *Proc Natl Acad Sci U S A.* 2012; 109:2544–2548. [PubMed: 22308485]
17. Si-Tayeb K, et al. Highly efficient generation of human hepatocyte-like cells from induced pluripotent stem cells. *Hepatology.* 2010; 51:297–305. [PubMed: 19998274]
18. Matsumoto K, Yoshitomi H, Rossant J, Zaret KS. Liver organogenesis promoted by endothelial cells prior to vascular function. *Science.* 2001; 294:559–563. [PubMed: 11577199]
19. Cleaver O, Melton DA. Endothelial signaling during development. *Nat Med.* 2003; 9:661–668. [PubMed: 12778164]
20. Ding BS, et al. Inductive angiocrine signals from sinusoidal endothelium are required for liver regeneration. *Nature.* 2010; 468:310–315. [PubMed: 21068842]
21. Bhatia SN, Balis UJ, Yarmush ML, Toner M. Effect of cell-cell interactions in preservation of cellular phenotype: cocultivation of hepatocytes and nonparenchymal cells. *FASEB J.* 1999; 13:1883–1900. [PubMed: 10544172]
22. Ungrin MD, Joshi C, Nica A, Bauwens C, Zandstra PW. Reproducible, ultra high-throughput formation of multicellular organization from single cell suspension-derived human embryonic stem cell aggregates. *PLoS One.* 2008; 3:e1565. [PubMed: 18270562]
23. Muller P, Schier AF. Extracellular movement of signaling molecules. *Dev Cell.* 2011; 21:145–158. [PubMed: 21763615]
24. Hamada H. In search of Turing in vivo: understanding Nodal and Lefty behavior. *Dev Cell.* 2012; 22:911–912. [PubMed: 22595667]
25. Muller P, et al. Differential diffusivity of Nodal and Lefty underlies a reaction-diffusion patterning system. *Science.* 2012; 336:721–724. [PubMed: 22499809]
26. Hui EE, Bhatia SN. Micromechanical control of cell-cell interactions. *Proc Natl Acad Sci U S A.* 2007; 104:5722–5726. [PubMed: 17389399]
27. Franses JW, Baker AB, Chitalia VC, Edelman ER. Stromal endothelial cells directly influence cancer progression. *Sci Transl Med.* 2011; 3:66ra65.
28. Khetani SR, Bhatia SN. Microscale culture of human liver cells for drug development. *Nat Biotechnol.* 2008; 26:120–126. [PubMed: 18026090]
29. Chen AA, et al. Humanized mice with ectopic artificial liver tissues. *Proc Natl Acad Sci U S A.* 2011; 108:11842–11847. [PubMed: 21746904]
30. Ding BS, et al. Endothelial-derived angiocrine signals induce and sustain regenerative lung alveolarization. *Cell.* 2011; 147:539–553. [PubMed: 22036563]
31. Khetani SR, Szulgit G, Del Rio JA, Barlow C, Bhatia SN. Exploring interactions between rat hepatocytes and nonparenchymal cells using gene expression profiling. *Hepatology.* 2004; 40:545–554. [PubMed: 15349892]
32. Khetani SR, Chen AA, Ranscht B, Bhatia SN. T-cadherin modulates hepatocyte functions in vitro. *FASEB J.* 2008; 22:3768–3775. [PubMed: 18635739]
33. Abu-Absi SF, Friend JR, Hansen LK, Hu WS. Structural polarity and functional bile canaliculi in rat hepatocyte spheroids. *Exp Cell Res.* 2002; 274:56–67. [PubMed: 11855857]

34. Brophy CM, et al. Rat hepatocyte spheroids formed by rocked technique maintain differentiated hepatocyte gene expression and function. *Hepatology*. 2009; 49:578–586. [PubMed: 19085959]
35. Williams CM, et al. Autocrine-controlled formation and function of tissue-like aggregates by primary hepatocytes in micropatterned hydrogel arrays. *Tissue Eng Part A*. 2011; 17:1055–1068. [PubMed: 21121876]
36. Nahmias Y, Berthiaume F, Yarmush ML. Integration of technologies for hepatic tissue engineering. *Adv Biochem Eng Biotechnol*. 2007; 103:309–329. [PubMed: 17195468]
37. Glicklis R, Merchuk JC, Cohen S. Modeling mass transfer in hepatocyte spheroids via cell viability, spheroid size, and hepatocellular functions. *Biotechnol Bioeng*. 2004; 86:672–680. [PubMed: 15137079]
38. Wong SF, et al. Concave microwell based size-controllable hepatosphere as a three-dimensional liver tissue model. *Biomaterials*. 2011; 32:8087–8096. [PubMed: 21813175]
39. Levenberg S, et al. Engineering vascularized skeletal muscle tissue. *Nat Biotechnol*. 2005; 23:879–884. [PubMed: 15965465]
40. Stevens KR, et al. Physiological function and transplantation of scaffold-free and vascularized human cardiac muscle tissue. *Proc Natl Acad Sci U S A*. 2009; 106:16568–16573. [PubMed: 19805339]
41. Gaebel R, et al. Patterning human stem cells and endothelial cells with laser printing for cardiac regeneration. *Biomaterials*. 2011; 32:9218–9230. [PubMed: 21911255]
42. Raghavan S, Nelson CM, Baranski JD, Lim E, Chen CS. Geometrically controlled endothelial tubulogenesis in micropatterned gels. *Tissue Eng Part A*. 2010; 16:2255–2263. [PubMed: 20180698]

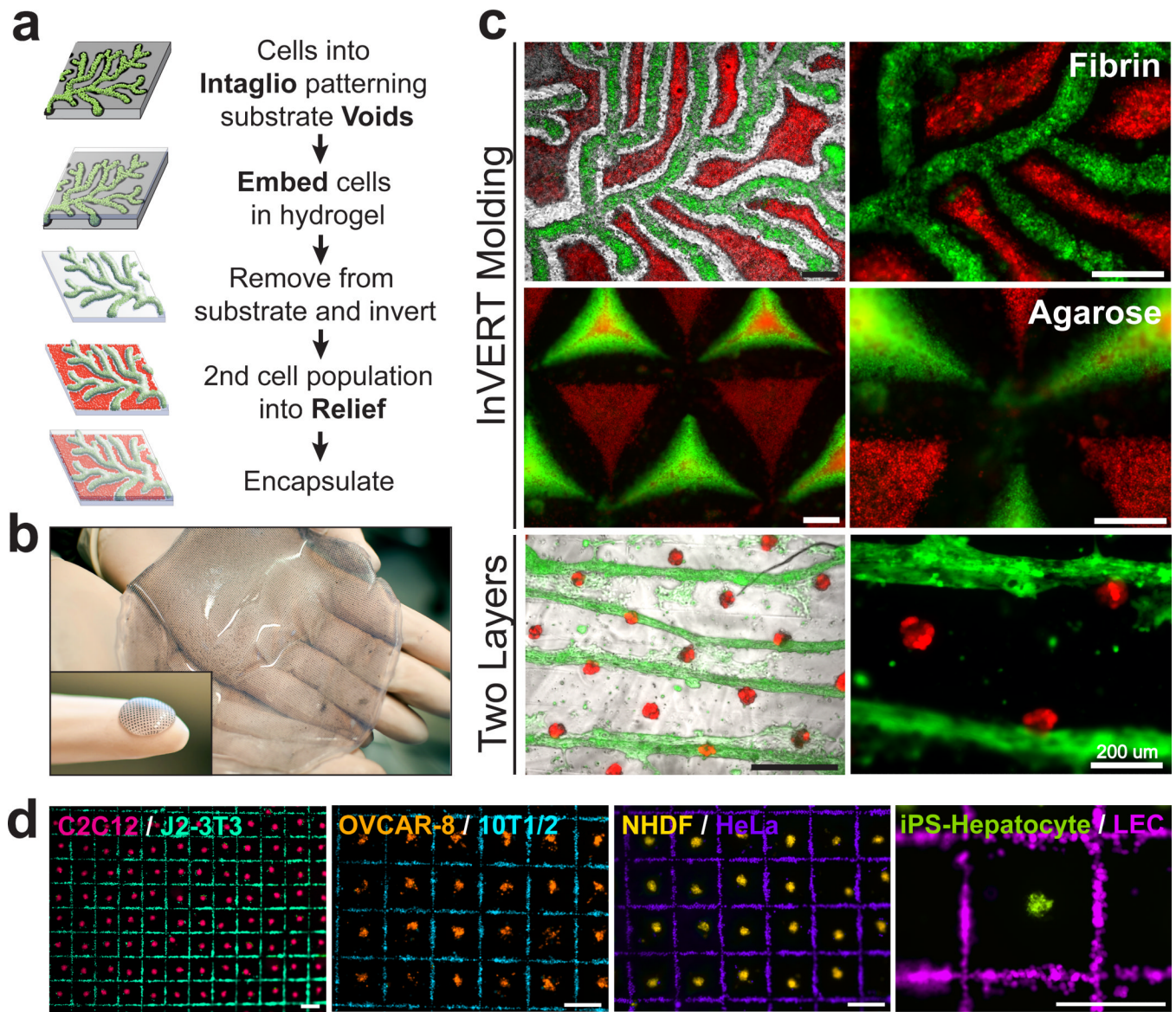


Figure 1. Fabrication method and versatility. (a) Process flow diagram for InVERT molding. Seeded cell populations are green (Intaglio phase) and red (Relief phase). (b) Substrate-based molding produces hydrogels from 1.5 cm- (inset) to 14 cm-diameter. Here, size and spacing (800 μm) of cell clusters enables macroscopic visualization after hematoxylin staining. (c) InVERT molding produces multi-compartmental patterning and is compatible with various substrates and materials. Labeled cells (green endothelial cells, calcein-AM; red fibroblasts, calcein red-orange AM) are patterned in fibrin gel using a custom-fabricated branching pattern substrate (top) or in agarose using a substrate molded using a corner cube bike reflector (middle). Substrate-molded cell layers were stacked manually for multi-layer patterning (bottom; hepatocyte aggregates, calcein red-orange AM, and endothelial cell cords, green calcein-AM; scale bars 500 μm unless otherwise denoted). (d) InVERT molding is compatible with many cell types. Mouse C2C12 skeletal myoblasts, mouse J2-3T3 fibroblasts, human ovarian carcinoma cells (OVCAR-8), stromal mouse embryonic fibroblasts (10T1/2), human cervical cancer cells (HeLa), normal human dermal fibroblasts

(NHDF), and human iPS-hepatocyte-like cells with liver endothelial cells (TMNK1; LEC) were labeled with calcein dyes and patterned in fibrin gel using InVERT molding (scale bars 300 μm).

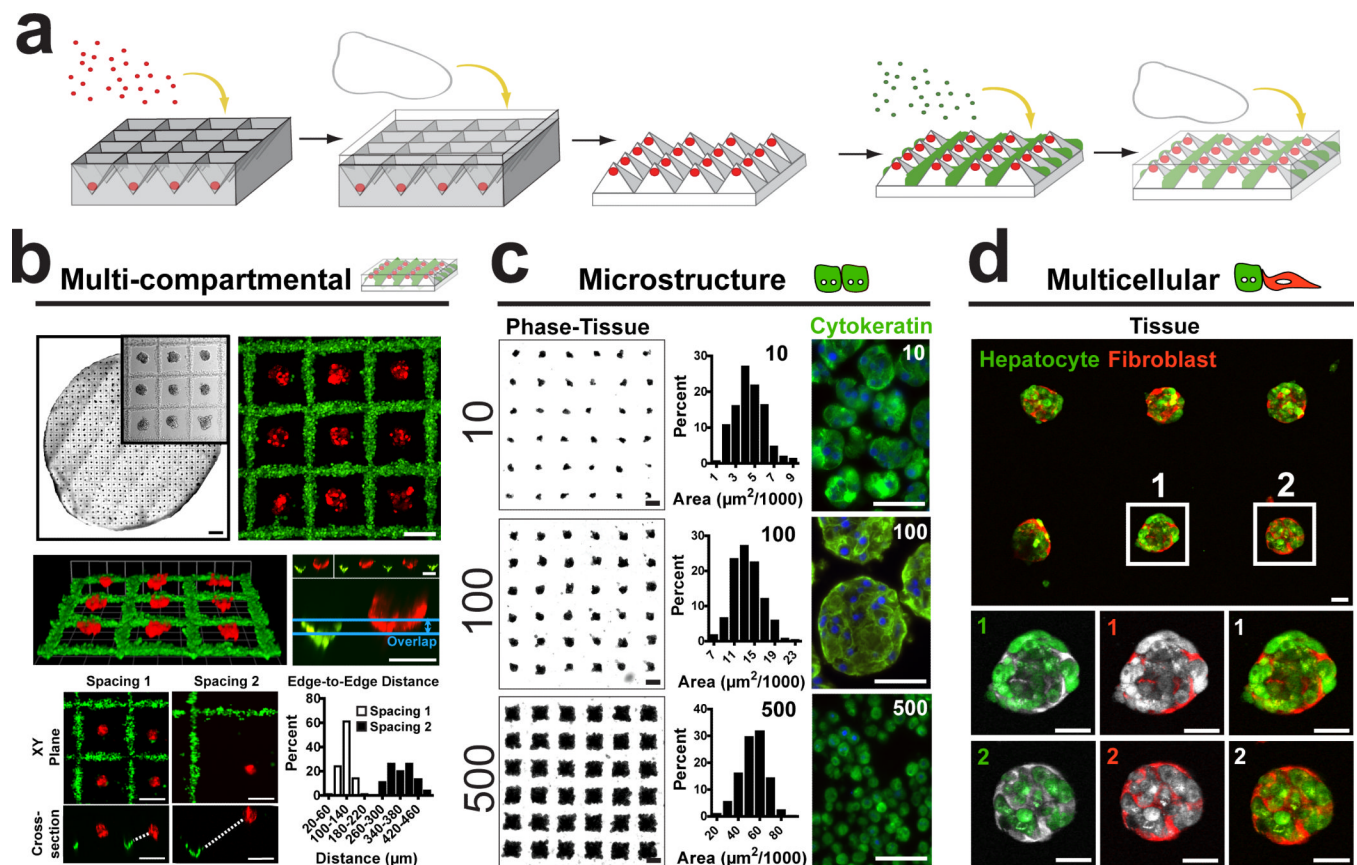


Figure 2. Multi-level and multicellular microorganization can be controlled across and within distinct compartments. **(a)** Hepatic aggregates (red) were embedded within an endothelial lattice (green) using InveRT molding. **(b)** Each 1.5 cm diameter hydrogel contained approximately 1000 aggregates (top left, representative phase images, scale bar 1 mm; inset 200 μm). Hepatic aggregates (red, calcein red-orange AM) were patterned within the endothelial lattice (green; calcein-AM, top right; scale bar 200 μm). 3D patterning is evident from opaque oblique and cross sectional-rendering of stacked multiphoton images (middle left; grid scale bar 127 μm). A single cross-section slice reveals overlap between populations in the Z plane (blue lines) but no overlap in the XY plane (middle right). Altering cell seeding density of J2 fibroblast aggregates and liver endothelial cells can eliminate overlap (bottom left; scale bars are 110 μm). Edge-to-edge distance (dotted white line) between cellular compartments followed distinct Poisson distributions for different spacings (bottom right) and was $116 \pm 25 \mu\text{m}$ S.D. and $366 \pm 52 \mu\text{m}$ (S.D.), respectively. **(c)** An average of 10 – 500 hepatocytes were seeded per microwell. Resultant aggregates were either encapsulated in hydrogels or removed for immunostaining analysis. Aggregates encapsulated in hydrogels (left, scale bar 200 μm) exhibit Poisson distribution (center; average cross-sectional area of $50 \pm 15 \times 10^2 \mu\text{m}^2$, $145 \pm 28 \times 10^2 \mu\text{m}^2$, and $590 \pm 110 \times 10^2 \mu\text{m}^2$ (S.D.) for 10, 100, and 500 cell aggregates, respectively). Cytokeratin immunostaining of isolated aggregates reveals distinct morphology across aggregate sizes (right, scale bar 50 μm). **(d)** Multiphoton imaging of hydrogels with patterned aggregates containing both hepatocytes and J2 fibroblasts demonstrates that fibroblasts were dispersed throughout each hepatic aggregate (fibroblasts, mCherry; hepatocytes, calcein-AM, scale bar 50 μm). Representative aggregates show fibroblasts located at both the edges and center of the aggregates (bottom).

Compartmental Placement

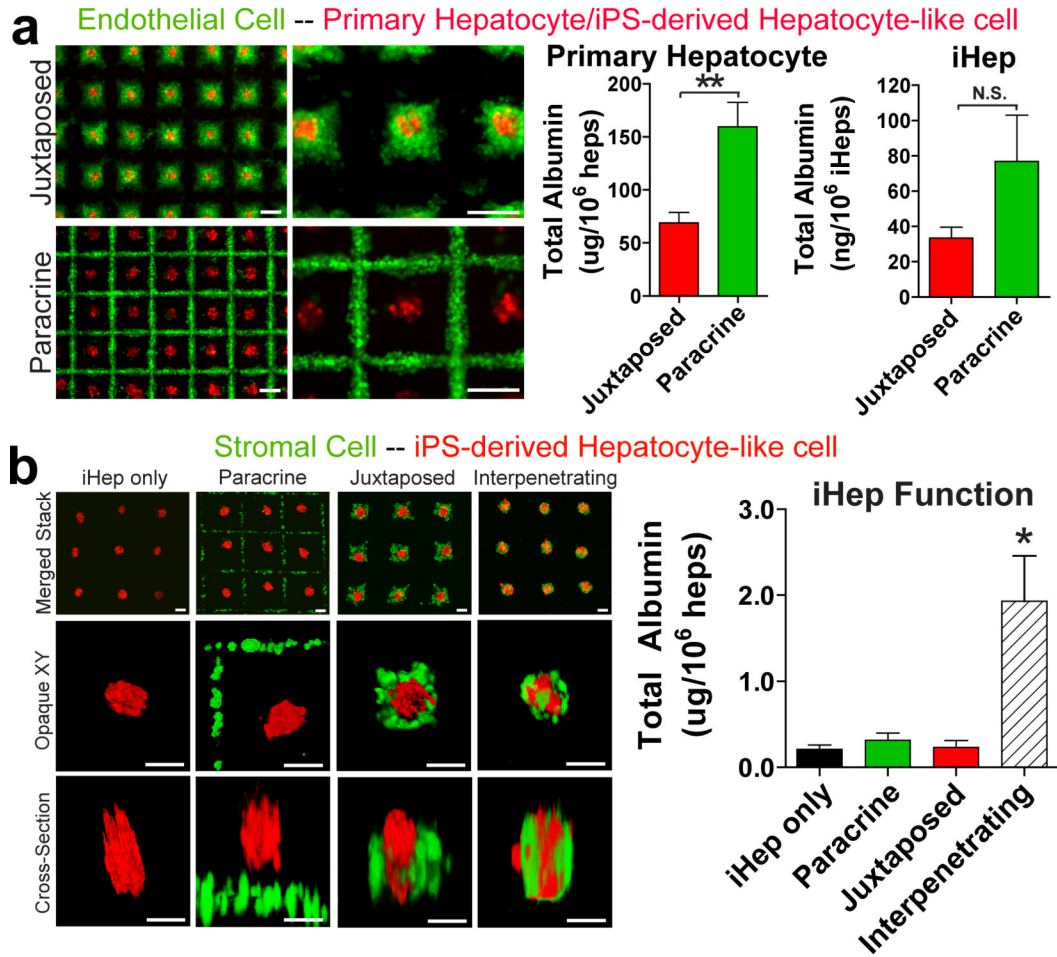
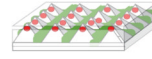
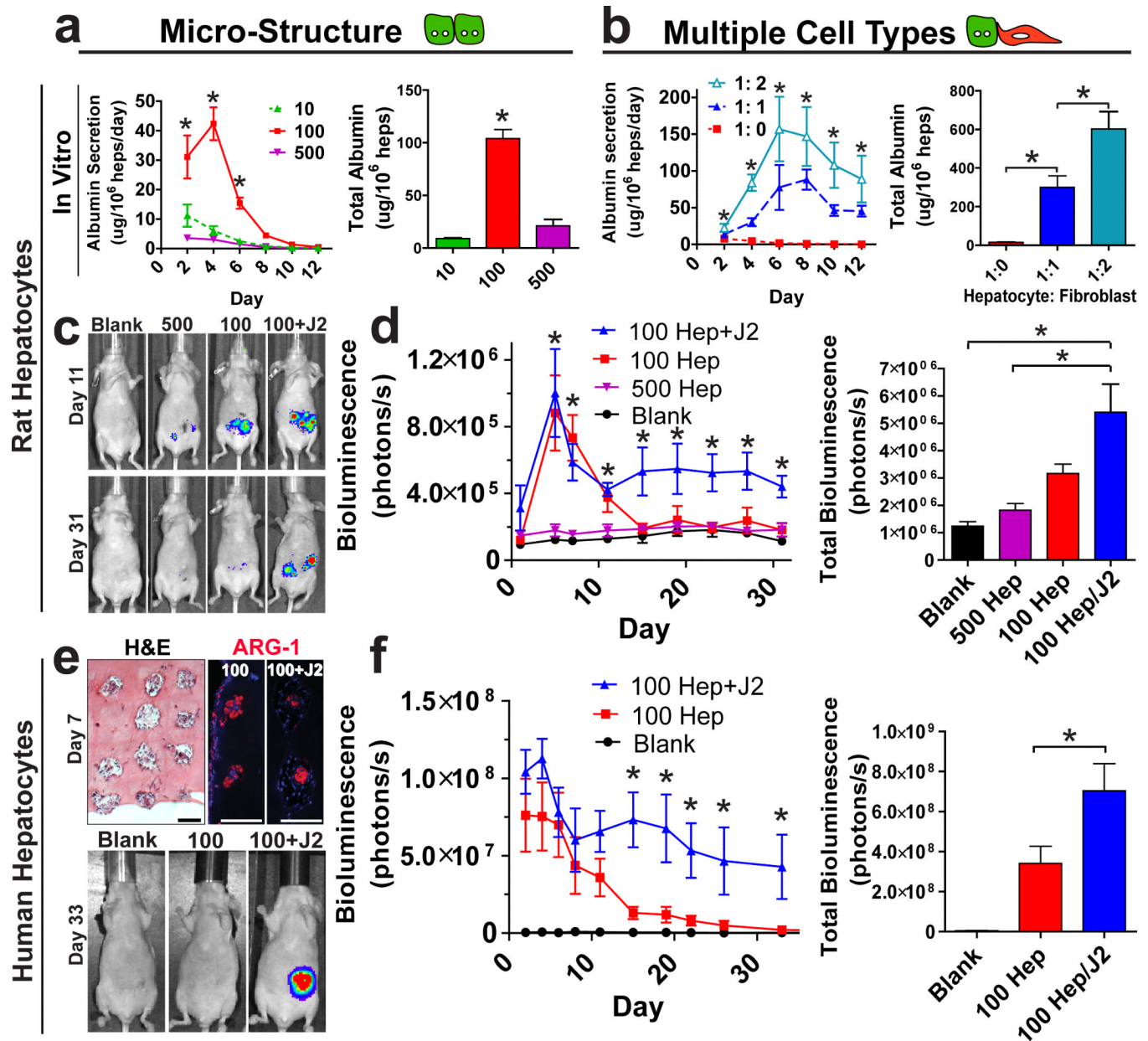


Figure 3.

Multi-compartmental placement dictates hepatic tissue function. (a) Liver sinusoidal endothelial cells (green) were patterned in ‘juxtaposed’, or compartmentally distinct ‘paracrine’ conformations relative to hepatic aggregates using InVERT molding (scale bar 200 μm). Paracrine configurations for primary hepatic aggregates and liver endothelial cells yield significantly greater albumin secretion than juxtaposed configurations [P = 0.0087, n = 5 and 6 and 160 ± 56 and 69 ± 22 μg/10⁶ hepatocytes (S.D.) for each respective group, Mann Whitney test], and similar trends were observed for iPS-Hep aggregates though this data was not significant [P = 0.3500, n = 3 for both groups, 77 ± 45 and 33 ± 11 ng/10⁶ hepatocytes (S.D.) for paracrine and juxtaposed groups, respectively; Mann Whitney test]. (b) Stromal cells (green) were patterned either in paracrine, juxtaposed’ or ‘interpenetrating’ conformation relative to iPS-hepatocyte-like cells using InVERT molding (scale bars 200 μm). Interpenetrating configurations yield higher albumin secretion relative to other conformations (P = 0.0250, n = 5, 4, 6, 6 and 0.2 ± 0.1, 0.3 ± 0.2, 0.2 ± 0.2, 1.9 ± 1.3 μg/10⁶ iHeps (S.D.) for each respective group; One-way ANOVA with Tukey post-hoc test).

**Figure 4.**

Optimization of tissue architecture modulates hepatic function *in vitro* and *in vivo*. (a) The number of hepatocytes per aggregate (10 – 500) resulted in distinct hepatic tissue function *in vitro* (* $p < 0.05$, SEM, $n = 4, 3, 3$ and total albumin of $9 \pm 2, 104 \pm 12, 21 \pm 9$ (S.D.) for each respective group, Kruskal-Wallis test). (b) Addition of J2 fibroblasts to hepatic aggregates in hydrogels sustained (left) and improved cumulative (right) hepatic functions in a dose-dependent manner *in vitro* (100 hepatocytes per aggregate + fibroblasts at 1: 0, 1: 1, 1: 2 hepatocytes: fibroblast, * $p < 0.05$, SEM, $n = 5, 5, 4$ and total albumin of $15 \pm 4, 300 \pm 132, 602 \pm 179 \mu\text{g}/10^6$ hepatocytes (S.D.) for each respective group, One-way ANOVA with Tukey post-hoc test). (c) Representative bioluminescence images of nude mice that received patterned tissue containing no cells (“Blank”), 500 rat primary hepatocytes per aggregate (“500”), 100 hepatocytes per aggregate (“100”), or 100 hepatocytes + J2 fibroblasts per aggregate (“100+J2”) implanted in the intra-peritoneal space. (d) Optimal *in*

in vitro tissue configurations result in sustained hepatic functions to over four weeks following implantation (* $p < 0.05$, SEM, $n = 3, 4, 5, 6$ and total bioluminescence of $1.2e6 \pm 0.3e6$, $1.8e6 \pm 0.5e6$, $3.2e6 \pm 0.8e6$, $5.4e6 \pm 2.3e6$ (S.D.) for each respective group, Kruskal-Wallis test with Dunn's Multiple Comparison post-hoc test). (e) Representative histological images of patterned tissues containing 100 cryopreserved human hepatocytes per aggregate with or without J2 fibroblasts ("100" or "100+J2") that were extracted seven days after intra-peritoneal implantation in nude mice. Patterned arrays of aggregates (left, hematoxylin and eosin) that contained arginase-1 positive hepatocytes (right, ARG-1, red) were identified in all animals with cellular implants (scale bars 100 μm). (f) The addition of fibroblasts sustained human hepatic function for at least four weeks (* $p < 0.05$, $n = 4, 6, 6$ and total bioluminescence of $0.0e8 \pm 0.0e8$, $3.4e8 \pm 2.1e8$, $7.0e8 \pm 3.3e8$ (S.D.) for each respective group, Mann-Whitney test, 'blank' excluded from statistical analysis).