

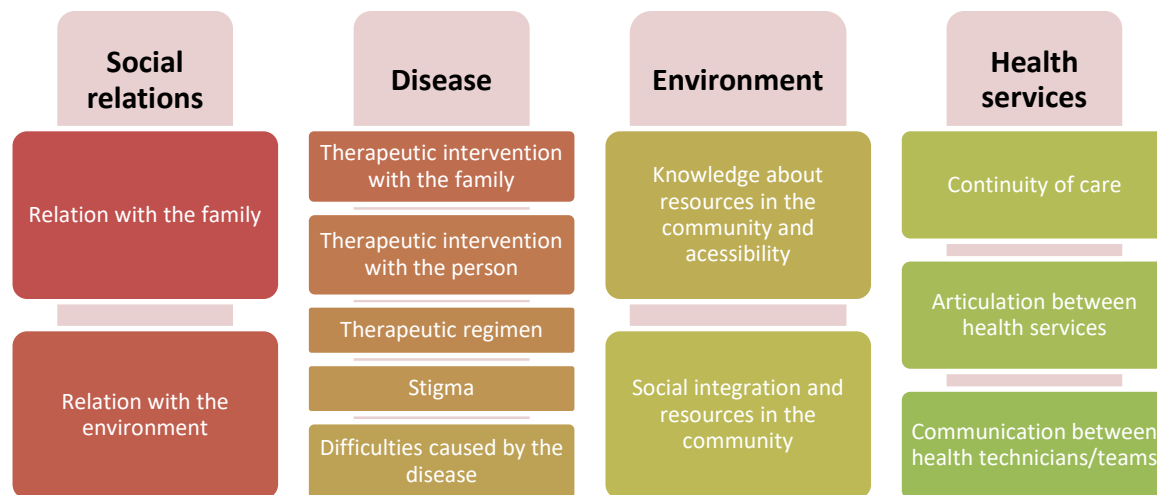
# Needs of Patients with Mental Illness in a Community Context

Gomes, Filomena<sup>1</sup>; Peixoto, Sílvia<sup>2</sup>; Azevedo, Carla<sup>2</sup>; Duarte, Ana<sup>1</sup>; Garcia, Antónia<sup>2</sup>; Iglésias, Catarina<sup>2</sup>; Silva, Irene<sup>2</sup>; Candeias, Analisa<sup>1</sup>; Macedo, Ermelinda<sup>1</sup>

<sup>1</sup> University of Minho – Portugal; <sup>2</sup> Casa de Saúde do Bom Jesus - Portugal

## BACKGROUND

Taking into account the different circumstances that make the community, this becomes a privileged context for the development of interventions in the scope of health. It is expected that the person with mental illness, who is integrated in his community, develop skills that allow him/her an effective recovery, taking into account the importance of its promotion.



## MATERIAL & METHODS

Aims: explore and describe the perspective of health professionals on the needs of a person with mental illness. Qualitative and exploratory study, based on symbolic interactionism. It was constituted a convenience sample of 7 health professionals from different areas of intervention. A semi-structured interview was chosen as a data collection instrument. Data analysis was performed using content analysis according to Blumer.

## RESULTS

From the analysis of the narratives emerged four dimensions, namely, social relations, disease, environment and health services. Thirteen subdimensions also emerged: relationship with the family and the environment; therapeutic intervention with the family and the person; therapeutic regimen; stigma and difficulties caused by the disease; knowledge about resources in the community and accessibility; social integration and resources in the community; continuity of care; articulation between health services and communication between health technicians / teams.

## CONCLUSIONS

We can conclude that the needs detected are related to different domains, being the difficulties demonstrated in terms of family dynamics, work environment and social relations; the difficulties in the management of the therapeutic regime is also highlighted, as well as difficulties in accessing support networks, or the inability of the person to mobilize means of access them.

## ACKNOWLEDGEMENTS

This article is a result of the project (NORTE-01-0145-FEDER-023855), supported by Norte Portugal Regional Operational Programme (NORTE 2020), under the PORTUGAL 2020 Partnership Agreement, through the European Regional Development Fund (ERDF).

## REFERENCES

- Blumer, H. (1969). *Symbolic Interactionism: Perspective and Method*. Englewood Cliffs: Prentice-Hall.
- Price, L. M. (2007). Transition to Community: A Program to Help Clients with Schizophrenia Move from Inpatient to Community Care; A Pilot Study. *Archives of Psychiatric Nursing*, 21 (6), 336–344.
- Slade, M. (2009). *100 ways to support recovery - A guide for mental health professionals*. London: Rethink
- Slade, M. & Longden, E. (2015). *The empirical evidence about mental health and recovery: how likely, how long, what helps?*. Victoria: MI Fellowship.