

ZEBRAFISH
Volume 10, Number 4, 2013
© Mary Ann Liebert, Inc.
DOI: 10.1089/zeb.2012.0833

Development of an *In Vitro* Cell System from Zebrafish Suitable to Study Bone Cell Differentiation and Extracellular Matrix Mineralization

Parameswaran Vijayakumar,¹ Vincent Laizé,¹ João Cardeira,¹ Marlene Trindade,¹ and M. Leonor Cancela^{1,2}

Abstract

Mechanisms of bone formation and skeletal development have been successfully investigated in zebrafish using a variety of *in vivo* approaches, but *in vitro* studies have been hindered due to a lack of homologous cell lines capable of producing an extracellular matrix (ECM) suitable for mineral deposition. Here we describe the development and characterization of a new cell line termed ZFB1, derived from zebrafish calcified tissues. ZFB1 cells have an epithelium-like phenotype, grow at 28°C in a regular L-15 medium supplemented with 15% of fetal bovine serum, and are maintained and manipulated using standard methods (e.g., trypsinization, cryopreservation, and transfection). They can therefore be propagated and maintained easily in most cell culture facilities. ZFB1 cells show aneuploidy with $2n=78$ chromosomes, indicative of cell transformation. Furthermore, because DNA can be efficiently delivered into their intracellular space by nucleofection, ZFB1 cells are suitable for gene targeting approaches and for assessing gene promoter activity. ZFB1 cells can also differentiate toward osteoblast or chondroblast lineages, as demonstrated by expression of osteoblast- and chondrocyte-specific markers, they exhibit an alkaline phosphatase activity, a marker of bone formation *in vivo*, and they can mineralize their ECM. Therefore, they represent a valuable zebrafish-derived *in vitro* system for investigating bone cell differentiation and extracellular matrix mineralization.

Introduction

BONE DISEASES ARE ONE OF THE MOST prevalent pathologies in the human population, particularly incident in elderly populations, throughout life and can affect bone formation, mineralization, and/or remodeling. In the past decades, most studies aiming at deciphering the complex mechanisms of vertebrate bone homeostasis have been performed using various animal models such as mammals^{1–4} and chicken.^{5–7} Those mechanisms remain, however, insufficiently understood and the use of alternative vertebrate models such as fish have been proposed to bring new insights. Because of the high evolutionary conservation of molecular mechanisms and physiological features among vertebrates, as well as the various technical advantages over mammals (e.g., external and rapid development and transparent embryos),^{8–11} teleost fish are recognized as suitable models to study the underlying mechanisms of bone formation and mineralization during skeletogenesis.^{12–17} Regenerative capacities of fish (in particular, bony rays of the caudal fin) have also validated this model for studies related

to bone formation and repair.^{18–20} The zebrafish, *Danio rerio* (Hamilton, 1822), is among the most popular fish model; it is widely used for developmental and functional studies^{21,22} and is already used as an *in vivo* model of several human bone diseases—for example, osteogenesis imperfecta,¹³ craniofacial dysplasia,^{16,23} holospondyly²⁴—and to study the role played by various genes in bone formation, homeostasis, skeletal development, and deformities.^{13,25–29} However, studies with zebrafish in the field of bone biology have been hampered by the absence of *in vitro* cell systems suitable to study the cellular mechanisms associated with bone cell (e.g., osteoblasts and chondrocytes) differentiation and extracellular matrix (ECM) mineralization. During the last decades, few zebrafish cell lines have been generated,^{30–35} mostly derived from embryonic tissues and none of them were reported to be capable of *in vitro* mineralization. We describe here the establishment, for the first time, of a stable cell culture derived from a pool of zebrafish calcified tissues and the characterization of its mineralogenic capacity by histological staining, immunocytochemistry, and gene expression analysis.

¹Centre of Marine Sciences (CCMAR/CIMAR-LA), University of Algarve, Campus de Gambelas, Faro, Portugal.

²Department of Biomedical Sciences and Medicine (DCBM), University of Algarve, Faro, Portugal.

Materials and Methods

Zebrafish maintenance

Wild-type zebrafish were maintained in 10-L aquaria with water recirculation (ZebTec housing System; Tecniplast) under the following conditions: temperature, 28°C; photoperiod, 14/10-h light/dark; pH, 7.5; conductivity, 660 μ S; density, two fish L⁻¹. Fish were fed twice a day with dry food (Tetramin flake C) and live *Artemia* nauplii.

Tissue collection and processing

Three-month-old healthy zebrafish ranging from 3 to 4 cm in length were given a lethal anesthesia of 0.015% tricaine (Sigma-Aldrich). Calcified tissues, that is, vertebra, upper and lower jaws, and branchial arches, were collected aseptically from four zebrafish and cleaned from adherent tissues in phosphate-buffered saline (PBS; pH 7.4) supplemented with 500 IU/mL of penicillin and 500 μ g/mL of streptomycin (Invitrogen). Tissues were minced into small pieces (~8 mm³) using sterile instruments and fragments were placed in 25-cm² cell culture flasks (Sarstedt) containing 3 mL of the Leibovitz's L-15 medium supplemented with 20% fetal bovine serum (FBS), 100 IU/mL of penicillin, 100 μ g/mL of streptomycin, and 2.5 μ g/mL of fungizone (all from Invitrogen). Cells were then allowed to migrate from fragments and to adhere to the surface of the flask for 2 weeks at 28°C. The culture medium was replaced every 5 days. At confluence, cells were subcultured (1:2) using 0.25% trypsin (Invitrogen) and 0.2% EDTA in PBS.

Chromosome analysis

Cell cultures at passage 43 were exposed for 2 h to colchicine (0.0025% in PBS; Sigma-Aldrich). Cells were detached using trypsin-EDTA and harvested by centrifugation (2000 g for 3 min). Cell pellets were gently resuspended in 0.027 M KCl in PBS and incubated at 25°C for 30 min. Cells were harvested again and fixed in a freshly prepared mixture of cold methanol/ acetic acid (3:1) for 15 min. After three washes in fixative, cells were resuspended in a small quantity of fixative, then dropped onto cold glass slides, air-dried, and stained with 5% Giemsa (pH 6.8; Merck Chemicals) for 20 min. Chromosomes were counted from micrographs of 50 metaphase plates.

Cryopreservation

ZFB1 cells from subconfluent cultures were harvested by centrifugation (2000 g for 5 min) and resuspended in an ice-cold medium supplemented with 10% cell culture grade dimethyl sulfoxide (Sigma-Aldrich) at a density of 10⁶ cells/mL. Cell suspensions were dispensed into 2-mL cryotubes (Sarstedt), placed at -80°C in a cell freezing device (Nalgene) overnight, and then transferred into liquid nitrogen. Frozen cells were recovered in 9 mL of the culture medium and placed in a flask at 28°C. The medium was renewed after 8 h and cell viability was determined using the Trypan blue dye exclusion method.³⁶

Cell proliferation

Cells were seeded at a density of 1.5 × 10³ cells/well in 96-well plates and proliferation was determined at appropriate times using the CellTiter 96 Non-Radioactive Proliferation Assay kit (Promega).

Transfection

Transfection efficiency of ZFB1 cells was determined using pEGFP-N1 (Clontech) or pmaxGFP (Lonza) vectors expressing the green fluorescent protein (GFP) under the control of a CMV promoter. ZFB1 cells were seeded at a density of 5 × 10⁵ cells/well in 6-well plates and cultured until subconfluence. The pEGFP-N1 vector (1 μ g) was delivered into the cells using FuGENE6 or FuGENE-HD (both from Roche) according to the manufacturer's instructions, through calcium phosphate coprecipitation according to Pfitzner *et al.*³⁷ or using polyethylenimine (PEI) according to Braga *et al.*³⁸ The pmaxGFP vector was delivered into the cells through nucleofection. In this case, 6 × 10⁵ cells were resuspended in 100 μ L of buffer L or V (Nucleofection optimization kit; Lonza) and nucleofected with 2 μ g of the pmaxGFP vector using the Amaxa Nucleofector (Lonza). Cells were seeded into 6-well plates and incubated for 6 h at 28°C. The culture medium was changed 48 h after transfection and 6 h after nucleofection, and efficiency of DNA delivery was determined by flow cytometry (BD Biosciences).

ECM mineralization

Cells were seeded at a density of 10⁵ cells/well in 6-well plates and grown to confluence. ECM mineralization was induced by supplementing the culture medium with a mineralogenic cocktail composed of 10 mM β -glycerophosphate, 4 mM calcium chloride, and 50 μ g/mL of L-ascorbic acid.³⁹ The medium was changed twice a week. After 3 weeks of treatment, levels of mineralization were assessed through Alizarin Red S (AR-S, 40 mM at pH 4.2; Sigma-Aldrich) and von Kossa's (VK) stainings.⁴⁰

Proteoglycan production

Cells were seeded at a density of 10⁵ cells/well in 6-well plates and grown to confluence. Proteoglycan production was induced by supplementing the culture medium with 6.25 μ g/mL of human insulin, 50 nM ascorbate 2-phosphate, and 10 ng/mL of human transforming growth factor- β 1 (all from Sigma-Aldrich). After 3 weeks of treatment, the presence of proteoglycans was assessed through Alcian Blue 8GS staining (0.5% [w/v] in 0.1 N HCl at pH 1.0; Sigma-Aldrich).

Alkaline phosphatase activity

Cells were seeded at a density of 3 × 10⁵ cells/well in 6-well plates and grown under mineralizing or normal conditions. At appropriate times, cells were washed with PBS, fixed in a 1% (v/v) glutaraldehyde solution (prepared in PBS) for 10 min, washed twice with PBS, and then incubated (in the dark) in a solution containing 50 mg/mL of bromochloro-indolyl phosphate/nitroblue tetrazolium (BCIP/NBT; Sigma-Aldrich). The development of a blue signal indicative of an alkaline phosphatase (ALP) activity was observed by microscopy. At appropriate times, the ALP activity was also measured in cell extracts by spectrophotometry according to the method described by Tiago *et al.*⁴¹

Immunofluorescence staining

For immunophenotyping, cells were grown on 13-mm glass coverslips (VWR), fixed with 3.7% (v/v) formalin

(prepared in PBS) for 10 min at 4°C, washed with PBS, permeabilized with 0.1% Triton X-100 for 5 min, and blocked in PBS containing 1% bovine serum albumin (BSA). Mouse monoclonal antibodies (Developmental Studies Hybridoma Bank) against Spp1/osteopontin (MPIIB10-1), type II collagen (II-II6B3), type X collagen (X-AC9), and chondroitin sulfate proteoglycans (9BA12), were diluted 1:10 in PBS with 1% BSA and directly added to the fixed cells at room temperature for 2 h. Cells were washed with 1:10 dilution of a blocking buffer in PBS and incubated with a Alexa Fluor 594-linked secondary antibody (Invitrogen) for 45 min at room temperature in the dark. Cells were washed several times with PBS, mounted in Mowiol (Sigma-Aldrich), and observed using an Olympus IX81 motorized fluorescence microscope equipped with an F-View camera (Olympus).

Immunohistochemistry

The suitability of mouse monoclonal antibodies against type II collagen and chondroitin sulfate proteoglycans for detecting zebrafish proteins was determined through whole-mount immunohistochemistry and staining of 6- to 7-cm-long zebrafish larvae, according to the procedure described by Verstraeten *et al.*⁴² Control fish were treated with a secondary antibody alone.

Western blot analysis

The suitability of mouse monoclonal antibodies against type X collagen and osteopontin/Spp1 for detecting zebrafish proteins was determined through western blot analysis of proteins prepared from zebrafish vertebrae and mouse femur. Protein extracts were fractionated on 4%–12% acrylamide NuPAGE Novex Bis-Tris gels (Invitrogen) and transferred onto PVDF membranes (Millipore) using the XCell SureLock blot module (Invitrogen). Chemiluminescence of the anti-mouse IgG-peroxidase conjugate (Sigma-Aldrich; 1:30,000 dilution) was detected using the Western Lightning ECL kit (Perkin Elmer) and Hyperfilm ECL (Amersham, GE Healthcare).

RNA preparation and gene expression analysis

Total RNA was extracted from cell cultures according to Chomczynski and Sacchi.⁴³ RNA integrity was assessed through 1% (w/v) agarose/formaldehyde gel electrophoresis and RNA quantity was determined through spectrophotometry (NanoDrop 1000; Thermo Scientific). Total RNA (1 µg) was treated with RNase-free DNase I (Promega) for 30 min at 37°C and reverse transcribed at 37°C for 1 h using the Moloney-murine leukemia virus (M-MLV) reverse transcriptase (Invitrogen), RNase Out (Invitrogen), and oligo-d(T) [5'-ACGCGTTCGACCTCGAGATCGATG(T)₁₃-3']. Levels of gene expression were determined through real-time PCR amplification carried out using gene-specific primers (Supplementary Table S1; Supplementary Data are available online at www.liebertpub.com/zeb) and normalized using the *efl1a11l1* housekeeping gene. A reaction mixture containing 1× Sso Fast EvaGreen supermix (Bio-Rad), 10 µM of forward and reverse primers, and 1:10 dilution of reverse-transcribed RNA was submitted to the following PCR conditions: 2 min at 95°C and 50× (20 s at 95°C, 45 s at 68°C). Amplifications were performed by using the StepOnePlus Real-Time PCR system (Applied Biosystems).

Results and Discussion

Establishment of ZFB1 cells

Several primary cell cultures derived from zebrafish-calcified tissue explants were developed as described in the Materials and Methods section and cultured at 28°C in the L-15 medium supplemented with 20% (until passage 30) and then 15% FBS. One culture—named ZFB1—was selected based on morphological criteria and mineralogenic potential and further characterized. After few passages, ZFB1 cells exhibited a polygonal shape and an epithelial-like phenotype (Fig. 1A) and growth appeared to be contact inhibited; this phenotype was maintained for more than 70 passages. The cell monolayer was routinely dissociated every 3–5 days using trypsin-EDTA and divided 1:2. The L-15 medium/FBS appeared to be adequate to sustain the growth of ZFB1 cells without the need for adjustments (e.g., osmolality and pH) or further supplements (e.g., fish serum). Whereas previous reports on the development of mineralogenic cell lines from marine teleosts³⁹ mentioned the use of an enzymatic cocktail to digest the bone collagenous matrix (collagenase) and cleave proteins anchoring bone cells to the matrix (trypsin), thus facilitating migration of bone cells from explants, ZFB1 cell culture was developed without any enzymatic treatment of bone fragments. The only apparent consequence was a slight delay in the initial cell migration from tissue fragments.

Proliferation of ZFB1 cells was assessed in the presence of four different FBS concentrations. While increasing FBS concentration to 20% (concentration used for the explant culture and the initial steps of the primary cell culture) did not improve the proliferation rate of ZFB1 cells, decreasing it to 10% and 5% significantly reduced cell growth rate by 15% and 75%, respectively (Fig. 1B). It is noteworthy that although 10% of serum will not bring optimal culture conditions, it will sustain cell proliferation to levels suitable for most *in vitro* experimentation.

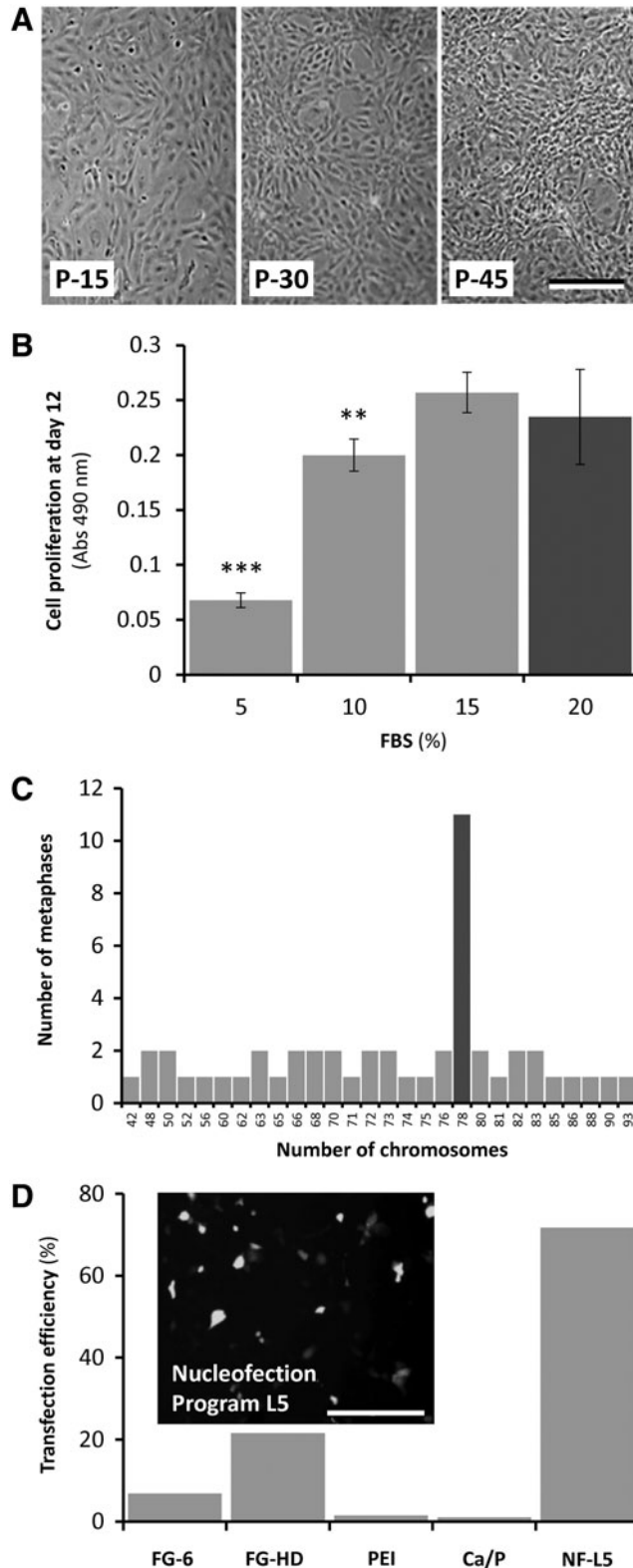
Cryopreservation of ZFB1 cells at passage 45 was successfully achieved using methods developed for mammalian cells and applied previously in our laboratory to marine fish cell lines.⁴⁴ Approximately 80% of ZFB1 cells survived cryopreservation in 10% DMSO and actively divided thereafter (results not shown).

Ploidy of ZFB1 cells was determined at passage 43 from chromosome counting in 50 metaphase plates. While diploid number of chromosome is $2n=50$ in zebrafish, a modal number of 78 chromosomes was observed in ZFB1 cells (Fig. 1C), indicating aneuploidy. Occurrence of abnormal number of chromosomes is frequent in cell lines, particularly in fish,⁴⁵ and is considered to be a sign of cell transformation.⁴⁶

DNA delivery into ZFB1 cells at passage 40 was assayed through lipofection, nucleofection or using polymers, and was evaluated through GFP fluorescence. While lipofection and polymer-assisted transfection resulted in few GFP-positive cells (efficiency ranged from 1% using calcium phosphate coprecipitation to 22% using FuGENE-HD), nucleofection proved to be an efficient method for delivering DNA into ZFB1 cells (efficiency was up to 72%; Fig. 1D). In combination with nucleofection, ZFB1 cells represent a valid tool for successful gene or mRNA targeting approaches and for assessing gene promoter activity.

ECM mineralization and production of sulfated proteoglycans

Mineralization of ZFB1 ECM was induced by supplementing the culture medium with a mineralogenic cocktail and evidenced through the presence of numerous calcium



phosphate deposits of various sizes, found to be positive for VK and AR-S staining (Fig. 2A, D, respectively). No clear mineral deposits were observed in cultures left untreated (Fig. 2B, E, respectively) indicating the requirement for an osteogenic stimulus to trigger cell differentiation, and none was observed in the absence of cells (results not shown) indicating a cell-mediated process. ECM mineralization was further quantified through densitometry (VK; Fig. 2C) and spectrophotometry (AR-S; Fig. 2F) analysis. These results demonstrated the ability of ZFB1 cells in differentiating towards an osteoblastic phenotype and in producing a matrix compatible with *in vitro* mineralization, as reported previously for marine fish cell lines.^{39,47} ZFB1 cell cultures exposed for 1 week to the mineralogenic cocktail exhibited a strong ALP activity (Fig. 2G) further confirmed through enzymatic assays of ALP activity (Fig. 2I). However, it was not significantly different from that observed in untreated cells (Fig. 2H) suggesting an acquired capacity to express high levels of ALP affecting positively the predisposition of these cells to differentiate towards an osteoblastic-like phenotype.

While mineralization of osteoblast matrix in rat, mouse and human only requires medium supplementation with ascorbic acid and β -glycerophosphate,^{48–53} fish osteoblast cells need a source of calcium (usually calcium chloride) to achieve ECM mineralization.^{39,54} No deposition of mineral was detected by VK staining in ZFB1 cell cultures exposed to a mineralogenic cocktail lacking calcium, even after extended periods of treatment (results not shown). This suggests that the quantity of calcium initially present in the culture medium (0.1396 g/L or 1.8 mM) is not sufficient to trigger the formation of calcium phosphate crystals during osteoblastic differentiation of zebrafish cells. We propose that calcium is a general requirement for ECM mineralization in fish mineralogenic cell lines and that this is probably the consequence of the presence of high levels of calcium in fresh and sea water (averaged value are about 4 and 400 mg/L, respectively) and the need for a higher plasma calcium concentration in fish as a stimulus for initiating ECM mineralization.³⁹

Confluent cultures of ZFB1 cells were also treated for 3 weeks with a chondrogenic cocktail containing transforming growth factor- β 1, a key factor in the regulation of cellular differentiation in cartilage formation.⁵⁵ Upon treatment, ZFB1

FIG. 1. Characterization of ZFB1 cells. **(A)** Phase-contrast micrographs of confluent cultures of zebrafish ZFB1 cells at passages (P) 15, 30, and 45. **(B)** Proliferation of passage 37 ZFB1 cells cultured for 12 days in a medium supplemented with different FBS concentrations. *Gray bar* indicates the concentration originally used to develop the cells. *Asterisks* indicate values statistically significant from 15% FBS value (one-way ANOVA, Dunnett's test; ** $p < 0.001$; *** $p < 0.0001$). **(C)** The chromosome number of ZFB1 cells at passage 43. Chromosomes were counted manually from 50 metaphase plates. *Gray bar* indicates a modal number of 78 chromosomes. **(D)** Efficiency of DNA delivery into ZFB1 cells assessed through GFP fluorescence. *Insert* shows the GFP signal in ZFB1 cells nucleofected using the buffer L and program 5 (L-5). FG-6, FuGENE 6; FG-HD, FuGENE HD; PEI, polyethylenimine; Ca/P, calcium phosphate coprecipitation; NF, nucleofection; GFP, green fluorescent protein. Scale bar is 200 μ m in **(A)** and 100 μ m in insert **(D)**.

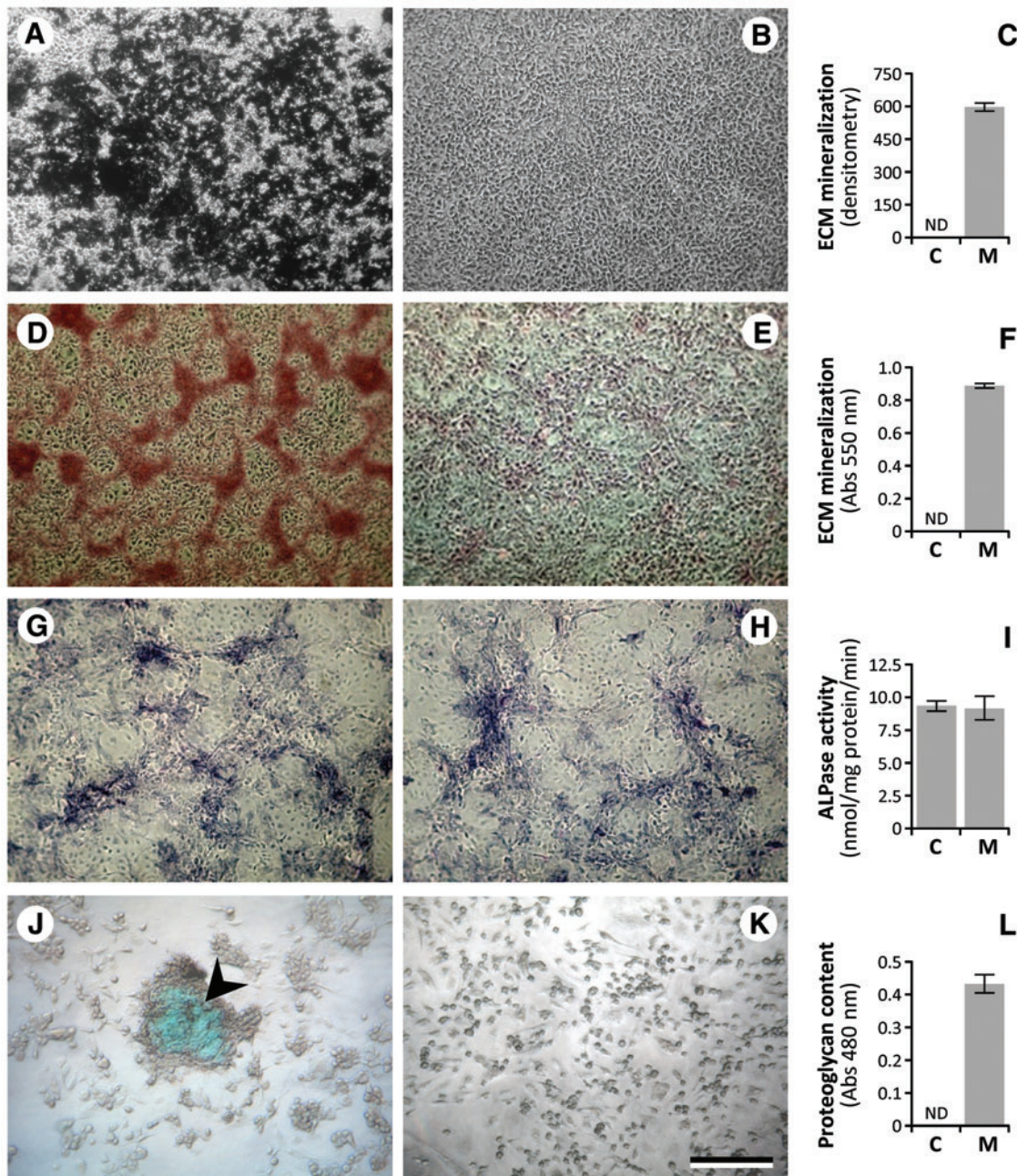


FIG. 2. Extracellular matrix (ECM) mineralization (A-F), ALP activity (G-I) and sulfated proteoglycan production (J-L) in ZFB1 cells at passage 45. (A) Phase-contrast micrographs of VK-stained cells treated for 3 weeks with osteogenic cocktail. Mineral nodules appear in *black*. (B) Untreated cells. (C) Levels of ECM mineralization by densitometry analysis of VK's staining after 3 weeks of treatment. (D) Phase-contrast micrographs of AR-S-stained cells treated for 3 weeks with osteogenic cocktail. Mineral nodules appear in *red*. (E) Untreated cells. (F) Levels of ECM mineralization by spectrophotometry analysis of AR-S staining after 3 weeks of treatment. (G) Phase-contrast micrographs of mineralizing cell cultures stained for alkaline phosphatase activity (*purple*). (H) Untreated cells. (I) Levels of ALP activity in 1 week of mineralizing cell cultures. (J) Phase-contrast micrographs of Alcian Blue-stained cells treated for 3 weeks with chondrogenic cocktail. Sulfated proteoglycans appear in *blue* (*arrowhead*). (K) Untreated cells. (L) Levels of sulfated proteoglycans determined by spectrophotometry analysis of AB staining after 3 weeks of treatment. ND, not detectable. Scale bar is 200 μ m. VK, von Kossa; AR-S, Alizarin Red; ALP, alkaline phosphatase. Color images available online at www.liebertpub.com/zeb

cells condensed into three-dimensional aggregates and produced highly sulfated proteoglycans, evidenced through Alcian Blue staining (Fig. 2J) and further confirmed through spectrophotometry analysis (Fig. 2L). No Alcian Blue staining was observed in cultures left untreated (Fig. 2K). These results

demonstrate the ability of ZFB1 in differentiating towards a chondroblastic phenotype and producing a cartilaginous matrix. Similar results have been reported by Ogawa *et al.*⁵⁶ in a study where adipose-derived stem cells (cells with a mesenchymal origin, similar to chondrocytes and osteoblasts)

treated with transforming growth factor- β 1 resulted in three-dimensional aggregates positively stained with Alcian Blue.

Based on the above results we propose that ZFB1 cells have the capacity to differentiate towards osteoblast and chondroblast lineages upon appropriate stimulation. This was further confirmed by immunocytochemistry using antibodies specific for cartilage-associated proteins including Cspgs (chondroitin sulfate proteoglycans) and Col2a1 (collagen, type II, alpha 1) (Fig. 3A, C respectively). These proteins were located mostly at sites of cell condensation and deposit of

mineralization-related proteins including Spp1 (secreted phosphoprotein 1/osteopontin) and Col10a1 (collagen, type X, alpha 1) (Fig. 3E, G respectively). No signal was detected in cells at week 0 (i.e., prior to treatment, data not shown). Positive staining for all markers was observed after 1 week (data not shown) and 3 weeks (Fig. 3) of treatment. Treated and untreated cultures, as well as negative controls, are shown in Supplementary Figure S1. To confirm the suitability of mouse antibodies to detect zebrafish proteins, whole-mount immunohistochemistry using zebrafish larvae (for Cspgs and

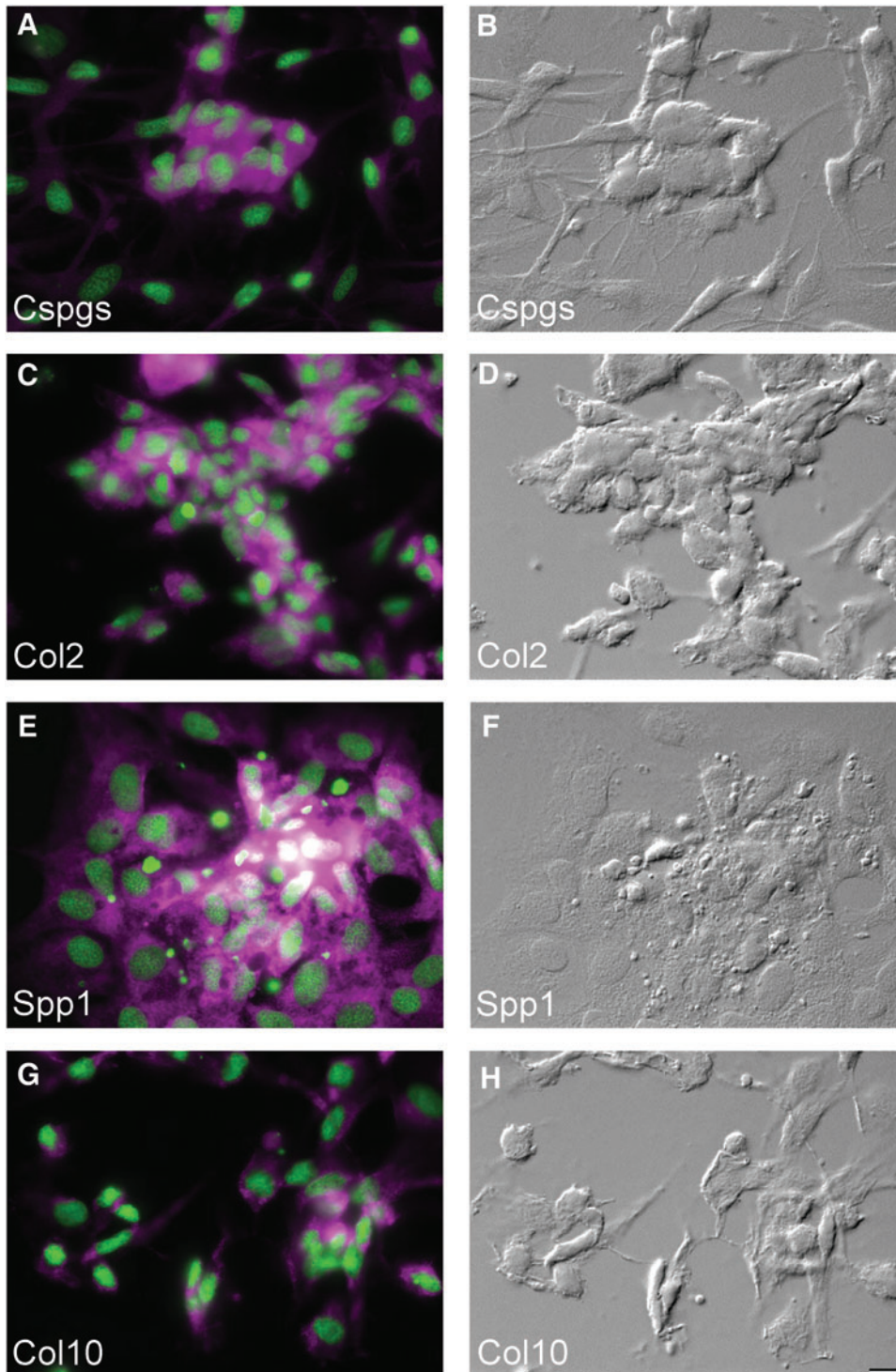


FIG. 3. Osteochondroblastic differentiation of ZFB1 cells and detection of lineage-specific markers by immunocytochemistry. (A) Chondroitin sulfate proteoglycans/Cspgs. (B) Differential interference contrast (DIC) image of (A). (C) Collagen type II/Col2. (D) DIC image of (C). (E) Osteopontin/Spp1. (F) DIC image of (E). (G) Collagen type X/Col10. (H) DIC image of (G). In all micrographs, the nucleus is stained with DAPI (green). Scale bar is 10 μ m. Color images available online at www.liebertpub.com/zeb

Col2a1) and western blotting comparing mouse and zebrafish vertebra extracts (for Col10a1 and Spp1) were performed (Supplementary Fig. S2), thus validating the use of these antibodies in our study.

Gene expression during in vitro mineralization of ZFB1 cells

Expression of several bone-related genes was evaluated by qPCR in ZFB1 cell cultures undergoing osteoblast differentiation (1 week) and ECM mineralization (3 weeks) and compared with control cells (Fig. 4). *Alp* is thought to play a role in the early mineralization process through the break-down of pyrophosphate, a known inhibitor of tissue mineralization,⁵⁷ thus inducing production of phosphate groups for crystal formation.⁵⁸ While *alp* expression was down-regulated in control cells at both time points, it was up-regulated in cells undergoing osteoblastic differentiation (approximately 2-fold increase over control) and down-regulated in cells undergoing ECM mineralization to levels found in control cells. In agreement with previous reports,⁵⁹ *Alp* seems to play a more important role during ZFB1 cell differentiation and matrix production than during ECM mineralization. Runt-related transcription factor 2 (*Runx2*) and osterix (*Osx*) are two transcription factors involved in osteoblast differentiation and bone formation in mammals^{60,61} and in fish.⁶² Expression of both genes was stable in control cells and strongly up-regulated in cells undergoing differentiation (2.7 and 5-fold increase at 1 and 3 weeks, respectively) and ECM mineralization (13.3 and 66.5-fold increase, at 1 and 3 weeks respectively) upon exposure to the mineralogenic cocktail. Osteopontin (*Spp1*) and osteonectin (*Sparc*) are two non-collagenous proteins present in osteoblast ECM.^{63,64} *Spp1* is a highly phosphorylated sialoprotein and a prominent component of bone and teeth mineralized ECM,⁶⁵ while *Sparc* is a matricellular glycoprotein with calcium binding domains which has been associated with ECM mineralization in osteoblasts.⁶⁶ These two proteins play a role in the regulation of mineralization,⁶³ attachment of osteoblasts and osteoclasts to the bone matrix, and/or attraction of cells to the bone matrix.⁶⁷ Expression of both genes was stable in control cells and up-regulated in cells undergoing differentiation (1.8 and 1.4-fold increase at 1 and 3 weeks, respectively) and ECM mineralization (9.3 and 3.7-fold increase, at 1 and 3 weeks respectively) upon exposure to the mineralogenic cocktail. While an increase in *spp1* expression in differentiating ZFB1 cells is in agreement with previous reports in mammalian^{68,69} and fish⁷⁰ cell systems, up-regulation of *sparc* expression in zebrafish cells is contradictory to previous expression data in gilthead seabream bone-derived VSa16 cells.⁷¹ qPCR data are however consistent with immunocytochemistry data showing a stimulated production of *Spp1* and *Sparc* in the ECM of ZFB1 cells undergoing mineralization. Type X collagen (*Col10a1*) is a structural protein of the ECM essential for mineral nodule deposition.⁷² While *col10a1* expression is used as a marker for chondrocyte hypertrophy in higher vertebrates,^{73,74} Avaron *et al.*⁷⁵ and Renn and Winkler⁷⁶ recently reported the expression of *col10a1* in early osteoblasts, during intramembranous and perichondral ossification of fish bone and therefore suggested that it could be a marker of pre-osteoblasts in teleost fish. Expression of *col10a1* was stable in control ZFB1 cells and strongly up-regulated during differentiation (16.2-fold increase after 1

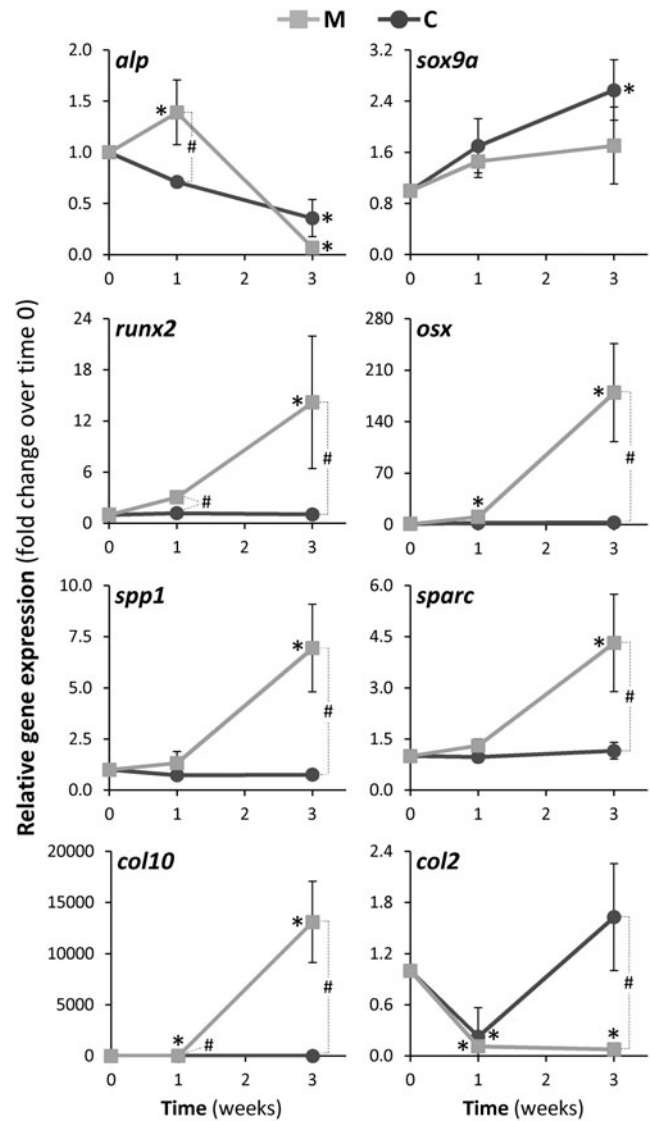


FIG. 4. Real-time PCR analysis of bone-related genes in ZFB1 cells treated for 3 weeks with osteoblastic cocktail. *alp*, alkaline phosphatase; *sox9a*, SRY (sex determining region Y)-box9; *runx2*, runt-related transcription factor 2; *osx*, osterix; *spp1*, osteopontin; *sparc*, osteonectin; *col10a1*, type X collagen; *col2a1*, type II collagen. C: control cultures; M: mineralizing cultures. Values are presented as mean \pm standard deviation calculated from three biological replicates (the value of each biological replicate is the mean of at least three technical replicates). Asterisks indicate values statistically significant from T0 and cardinals indicate values statistically significant from mineralization and control (one-way ANOVA $p < 0.05$).

week of treatment) and in cells undergoing ECM mineralization (14,700-fold increase after 3 weeks of treatment, respectively). Thus, expression data related to *col10a1* pointed towards an osteoblastic differentiation of ZFB1 chondro/osteoblast progenitor cells upon exposure to mineralogenic cocktail. Type II collagen, a homotrimer of the $\alpha 1(\text{II})$ chain (*Col2a1*), is a major protein of cartilage ECM and is synthesized primarily by proliferating chondrocytes but not by hypertrophic chondrocytes.⁷⁷ Upon exposure to mineralogenic cocktail, *col2a1* expression was down-regulated (about 5-fold decrease) in differentiating (not significantly different from control cells)

and mineralizing (20.9-fold decrease after 3 weeks of treatment) cultures. Expression data are consistent with immunocytochemistry data, where Col2a1 was detected in few cells at the sites of condensation during the ECM mineralization (Fig. 3E) and further confirm that ZFB1 cells do not differentiate towards a chondroblast phenotype upon exposure to mineralogenic cocktail. Sox9 is a transcription factor with a high-mobility-group (HMG-box) DNA-binding domain exhibiting a high degree of homology with that of the mammalian testis-determining factor, SRY. It was reported that during chondrogenesis, *sox9* is expressed in all chondroprogenitors and all differentiated chondrocytes.^{78–80} In ZFB1 cells, expression of *sox9a* remained low and was not regulated during cell differentiation and ECM mineralization thus further excluding chondrogenic differentiation, while qPCR analysis of osteoblast marker gene expression revealed the up-regulation of osteoblast-specific transcription factors (*runx2* and *osx*), non-collagenous ECM proteins (*spp1* and *sparc*), and fibrillar collagen (*col10a1*) demonstrating the osteoblastic potential of ZFB1.

Conclusions

This is the first report of the successful development of a bone-derived stable cell culture from zebrafish. Our results clearly show the presence within the ZFB1 cell population of cells able to differentiate into two different bone lineages, that is, chondroblast and osteoblast, with the capability of ECM mineralization. ZFB1 cells represent the first zebrafish-derived cell model with such characteristics. As detailed above, the ZFB1 cells are cultured and manipulated using regular reagents (medium and serum) and methods (cryopreservation and transfection), and thus its use can be easily implemented in virtually any laboratory equipped with cell culture facilities. The availability of such *in vitro* cell systems represents a promising model for investigating bone lineage cell differentiation in fish and will contribute to promote the use of zebrafish as a model organism to study specific pathways involved in human skeletal-related diseases.

Acknowledgments

This work was funded by the FISHCELL project (PTDC/MAR/105313/2008) financed by the Portuguese Science and Technology Foundation (FCT) and received the support of the Association of European Marine Biological Laboratories through the ASSEMBLE project (FP7/227799). This work was cofunded by the European Regional Development Fund (ERDF) through the COMPETE Program and by the National Fund through FCT under the PEst-C/MAR/LA0015/2011 project. P.V. is supported by a postdoctoral grant from FCT (SFRH/BPD/39189/2007). We thank Joana Rosa and Cátia L. Marques for their assistance in western blot analysis. The monoclonal antibodies used in this study were obtained from the Developmental Studies Hybridoma Bank developed under the auspices of the NICHD and maintained by the University of Iowa, Department of Biology, Iowa City, IA. Flow cytometry and fluorescence imaging were performed in the facilities of the Department of Biomedical Sciences and Medicine, University of Algarve.

Disclosure Statement

No competing financial interests exist.

References

- Karsenty G, Wagner EF. Reaching a genetic and molecular understanding of skeletal development. *Dev Cell* 2002;2: 389–406.
- Blair HC, Zaidi M, Schlesinger PH. Mechanisms balancing skeletal matrix synthesis and degradation. *Biochem J* 2002; 364:329–341.
- Schindeler A, Little DG. Recent insights into bone development, homeostasis, and repair in type 1 neurofibromatosis (NF1). *Bone* 2008;42:616–622.
- Teti A, Zallone A. Do osteocytes contribute to bone mineral homeostasis? Osteocytic osteolysis revisited. *Bone* 2009;44: 11–16.
- Fisher MC, Meyer C, Garber G, Dealy CN. Role of IGFBP2, IGF-I and IGF-II in regulating long bone growth. *Bone* 2005;37:741–750.
- Ohuchi H, Nakagawa T, Yamamoto A, Araga A, Ohata T, Ishimaru Y, *et al.* The mesenchymal factor, FGF10, initiates and maintains the outgrowth of the chick limb bud through interaction with FGF8, an apical ectodermal factor. *Development* 1997;124:2235–2244.
- Teti A, Blair HC, Teitelbaum SL, Kahn AJ, Koziol C, Konsek J, *et al.* Cytoplasmic pH regulation and chloride/bicarbonate exchange in avian osteoclasts. *J Clin Invest* 1989;83:227–233.
- Ingham PW. The power of the zebrafish for disease analysis. *Hum Mol Genet* 2009;18:R107–R112.
- Lawrence C. The husbandry of zebrafish (*Danio rerio*): a review. *Aquaculture* 2007;269:1–20.
- Martin CS, Moriyama A, Zon LI. Hematopoietic stem cells, hematopoiesis and disease: lessons from the zebrafish model. *Genome Med* 2011;3:83.
- Patton EE, Zon LI. The art and design of genetic screens: zebrafish. *Nat Rev Genet* 2001;2:956–966.
- Du SJ, Li H, Bian Y, Zhong Y. Heat-shock protein 90 α 1 is required for organized myofibril assembly in skeletal muscles of zebrafish embryos. *Proc Natl Acad Sci U S A* 2008; 105:554–559.
- Fisher S, Jagadeeswaran P, Halpern ME. Radiographic analysis of zebrafish skeletal defects. *Dev Biol* 2003;264: 64–76.
- Gavaia PJ, Sarasquete C, Cancela ML. Detection of mineralized structures in early stages of development of marine Teleostei using a modified alcian blue-alizarin red double staining technique for bone and cartilage. *Biotech Histochem* 2000;75:79–84.
- Gavaia PJ, Simes DC, Ortiz-Delgado JB, Viegas CS, Pinto JP, Kersh RN, *et al.* Osteocalcin and matrix Gla protein in zebrafish (*Danio rerio*) and Senegal sole (*Solea senegalensis*): comparative gene and protein expression during larval development through adulthood. *Gene Expr Patterns* 2006; 6:637–652.
- Nissen RM, Amsterdam A, Hopkins N. A zebrafish screen for craniofacial mutants identifies *wdr68* as a highly conserved gene required for endothelin-1 expression. *BMC Dev Biol* 2006;6:28.
- Apschner A, Schulte-Merker S, Witten PE. Not all bones are created equal—using zebrafish and other teleost species in osteogenesis research. *Methods Cell Biol* 2011;105: 239–255.
- Akimenko MA, Mari-Beffa M, Becerra J, Geraudie J. Old questions, new tools, and some answers to the mystery of fin regeneration. *Dev Dyn* 2003;226:190–201.
- Poss KD, Keating MT, Nechiporuk A. Tales of regeneration in zebrafish. *Dev Dyn* 2003;226:202–210.

20. Knopf F, Hammond C, Chekuru A, Kurth T, Hans S, Weber CW, *et al.* Bone regenerates via dedifferentiation of osteoblasts in the zebrafish fin. *Dev Cell* 2011;20:713–724.
21. Lieschke GJ, Currie PD. Animal models of human disease: zebrafish swim into view. *Nat Rev Genet* 2007;8:353–367.
22. Kabashi E, Brustein E, Champagne N, Drapeau P. Zebrafish models for the functional genomics of neurogenetic disorders. *Biochim Biophys Acta* 2011;1812:335–345.
23. Belloni E, Muenke M, Roessler E, Traverso G, Siegel-Bartelt J, Frumkin A, *et al.* Identification of Sonic *hedgehog* as a candidate gene responsible for holoprosencephaly. *Nat Genet* 1996;14:353–356.
24. Spooendonk KM, Peterson-Maduro J, Renn J, Trowe T, Kranenbarg S, Winkler C, *et al.* Retinoic acid and *Cyp26b1* are critical regulators of osteogenesis in the axial skeleton. *Development* 2008;135:3765–3774.
25. Albertson RC, Payne-Ferreira TL, Postlethwait J, Yelick PC. Zebrafish *acvr2a* and *acvr2b* exhibit distinct roles in craniofacial development. *Dev Dyn* 2005;233:1405–1418.
26. Schilling TF, Le Pabic P, Hoffman TL. Using transgenic zebrafish (*Danio rerio*) to study development of the craniofacial skeleton. *J Appl Ichthyol* 2010;26:183–186.
27. Verreijdt L, Debais-Thibaud M, Borday-Birraux V, Van der Heyden C, Sire JY, Huysseune A. Expression of the *dlx* gene family during formation of the cranial bones in the zebrafish (*Danio rerio*): differential involvement in the visceral skeleton and braincase. *Dev Dyn* 2006;235:1371–1389.
28. Witten PE, Huysseune A. A comparative view on mechanisms and functions of skeletal remodelling in teleost fish, with special emphasis on osteoclasts and their function. *Biol Rev Camb Philos Soc* 2009;84:315–346.
29. Yang DC, Tsai CC, Liao YF, Fu HC, Tsay HJ, Huang TF, *et al.* *Twist* controls skeletal development and dorsoventral patterning by regulating *runx2* in zebrafish. *PLoS One* 2011;6:e27324.
30. Collodi P, Kamei Y, Sharps A, Weber D, Barnes D. Fish embryo cell cultures for derivation of stem cells and transgenic chimeras. *Mol Mar Biol Biotechnol* 1992;1:257–265.
31. Ghosh C, Collodi P. Culture of cells from zebrafish (*Brachydanio rerio*) blastula-stage embryos. *Cytotechnology* 1994;14:21–26.
32. Stachura DL, Reyes JR, Bartunek P, Paw BH, Zon LI, Traver D. Zebrafish kidney stromal cell lines support multilineage hematopoiesis. *Blood* 2009;114:279–289.
33. Xing JG, El-Sweisi W, Lee LE, Collodi P, Seymour C, Mothersill C, *et al.* Development of a zebrafish spleen cell line, ZSSJ, and its growth arrest by gamma irradiation and capacity to act as feeder cells. *In Vitro Cell Dev Biol Anim* 2009;45:163–174.
34. Xing JG, Lee LE, Fan L, Collodi P, Holt SE, Bols NC. Initiation of a zebrafish blastula cell line on rainbow trout stromal cells and subsequent development under feeder-free conditions into a cell line, ZEB2J. *Zebrafish* 2008;5:49–63.
35. Fan L, Crodian J, Collodi P. Culture of embryonic stem cell lines from zebrafish. *Methods Cell Biol* 2004;76:151–160.
36. Strober W. Trypan blue exclusion test of cell viability. *Curr Protoc Immunol* 2001;21:A.3B.1–A.3B.2.
37. Pfitzner E, Becker P, Rolke A, Schule R. Functional antagonism between the retinoic acid receptor and the viral transactivator BZLF1 is mediated by protein-protein interactions. *Proc Natl Acad Sci U S A* 1995;92:12265–12269.
38. Braga D, Laizé V, Tiago DM, Cancela ML. Enhanced DNA transfer into fish bone cells using polyethylenimine. *Mol Biotechnol* 2006;34:51–54.
39. Pombinho AR, Laizé V, Molha DM, Marques SM, Cancela ML. Development of two bone-derived cell lines from the marine teleost *Sparus aurata*; evidence for extracellular matrix mineralization and cell-type-specific expression of matrix Gla protein and osteocalcin. *Cell Tissue Res* 2004;315:393–406.
40. Bills CE, Eisenberg H, Pallante SL. Complexes of organic acids with calcium phosphate: the von Kossa stain as a clue to the composition of bone mineral. *Johns Hopkins Med J* 1971;128:194–207.
41. Tiago DM, Cancela ML, Aureliano M, Laizé V. Vanadate proliferative and anti-mineralogenic effects are mediated by MAPK and PI-3K/Ras/Erk pathways in a fish chondrocyte cell line. *FEBS Lett* 2008;582:1381–1385.
42. Verstraeten B, Sanders E, Huysseune A. Whole mount immunohistochemistry and *in situ* hybridization of larval and adult zebrafish dental tissues. *Methods Mol Biol* 2012;887:179–191.
43. Chomczynski P, Sacchi N. Single-step method of RNA isolation by acid guanidinium thiocyanate-phenol-chloroform extraction. *Anal Biochem* 1987;162:156–159.
44. Marques CL, Rafael MS, Cancela ML, Laizé V. Establishment of primary cell cultures from fish calcified tissues. *Cytotechnology* 2007;55:9–13.
45. Hsu TC. Karyology of cells in culture. A. Preparation and analysis of karyotypes and idiograms. In: Kruse PF, Patterson MK (eds.). *Tissue Culture Methods and Application*. New York: Academic Press, 1973, pp. 764–767.
46. Freshney RI. *Animal Cell Culture, a Practical Approach*. Washington, DC: IRL Press, Oxford, 1986.
47. Rafael MS, Marques CL, Parameswaran V, Cancela ML, Laizé V. Fish bone-derived cell lines: an alternative *in vitro* cell system to study bone biology. *J Appl Ichthyol* 2010;26:230–234.
48. Costa M, Fernandes M. Long-term effects of parathyroid hormone, 1,25-dihydroxyvitamin D₃, and dexamethasone on the cell growth and functional activity of human osteogenic alveolar bone cell cultures. *Pharmacol Res* 2000;42:345–353.
49. Fournier B, Price PA. Characterization of a new human osteosarcoma cell line OHS-4. *J Cell Biol* 1991;114:577–583.
50. Kellermann O, Buc-Caron MH, Marie PJ, Lamblin D, Jacob F. An immortalized osteogenic cell line derived from mouse teratocarcinoma is able to mineralize *in vivo* and *in vitro*. *J Cell Biol* 1990;110:123–132.
51. Otsuka E, Yamaguchi A, Hirose S, Hagiwara H. Characterization of osteoblastic differentiation of stromal cell line ST2 that is induced by ascorbic acid. *Am J Physiol* 1999;277:C132–C138.
52. Stanford CM, Jacobson PA, Eanes ED, Lembke LA, Midura RJ. Rapidly forming apatitic mineral in an osteoblastic cell line (UMR 106-01 BSP). *J Biol Chem* 1995;270:9420–9428.
53. Mori K, Shioi A, Jono S, Nishizawa Y, Morii H. Expression of matrix Gla protein (MGP) in an *in vitro* model of vascular calcification. *FEBS Lett* 1998;433:19–22.
54. Parameswaran V, Laizé V, Gavaia PJ, Leonor Cancela M. ESSA1 embryonic stem like cells from gilthead seabream: a new tool to study mesenchymal cell lineage differentiation in fish. *Differentiation* 2012;84:240–251.
55. Zuk PA, Zhu M, Mizuno H, Huang J, Futrell JW, Katz AJ, *et al.* Multilineage cells from human adipose tissue: implications for cell-based therapies. *Tissue Eng* 2001;7:211–228.
56. Ogawa R, Mizuno H, Watanabe A, Migita M, Shimada T, Hyakusoku H. Osteogenic and chondrogenic differentiation

- by adipose-derived stem cells harvested from GFP transgenic mice. *Biochem Biophys Res Commun* 2004;313:871–877.
57. Addison WN, Azari F, Sorensen ES, Kaartinen MT, McKee MD. Pyrophosphate inhibits mineralization of osteoblast cultures by binding to mineral, up-regulating osteopontin, and inhibiting alkaline phosphatase activity. *J Biol Chem* 2007;282:15872–15883.
58. Whyte MP. Hypophosphatasia and the role of alkaline phosphatase in skeletal mineralization. *Endocr Rev* 1994;15:439–461.
59. Wergedal JE, Baylink DJ. Distribution of acid and alkaline phosphatase activity in undemineralized sections of the rat tibial diaphysis. *J Histochem Cytochem* 1969;17:799–806.
60. Marie PJ. Transcription factors controlling osteoblastogenesis. *Arch Biochem Biophys* 2008;473:98–105.
61. Zhang C. Transcriptional regulation of bone formation by the osteoblast-specific transcription factor *Osx*. *J Orthop Surg Res* 2010;5:37.
62. Li N, Felber K, Elks P, Croucher P, Roehl HH. Tracking gene expression during zebrafish osteoblast differentiation. *Dev Dyn* 2009;238:459–466.
63. Bellows CG, Reimers SM, Heersche JN. Expression of mRNAs for type-I collagen, bone sialoprotein, osteocalcin, and osteopontin at different stages of osteoblastic differentiation and their regulation by 1,25 dihydroxyvitamin D₃. *Cell Tissue Res* 1999;297:249–259.
64. Gorski JP. Acidic phosphoproteins from bone matrix: a structural rationalization of their role in biomineralization. *Calcif Tissue Int* 1992;50:391–396.
65. Sodek J, Ganss B, McKee MD. Osteopontin. *Crit Rev Oral Biol Med* 2000;11:279–303.
66. Yan Q, Sage EH. SPARC, a matricellular glycoprotein with important biological functions. *J Histochem Cytochem* 1999;47:1495–1506.
67. Cowles EA, DeRome ME, Pastizzo G, Brailey LL, Gronowicz GA. Mineralization and the expression of matrix proteins during *in vivo* bone development. *Calcif Tissue Int* 1998;62:74–82.
68. Kärner E, Bäckesjö CM, Cedervall J, Sugars RV, Ährlund-Richter L, Wendel M. Dynamics of gene expression during bone matrix formation in osteogenic cultures derived from human embryonic stem cells *in vitro*. *Biochim Biophys Acta* 2009;1790:110–118.
69. zur Nieden NI, Kempka G, Ahr HJ. *In vitro* differentiation of embryonic stem cells into mineralized osteoblasts. *Differentiation* 2003;71:18–27.
70. Tiago DM, Laizé V, Bargelloni L, Ferraresso S, Romualdi C, Cancela ML. Global analysis of gene expression in mineralizing fish vertebra-derived cell lines: new insights into anti-mineralogenic effect of vanadate. *BMC Genomics* 2011;12:310.
71. Laizé V, Pombinho AR, Cancela ML. Characterization of *Sparus aurata* osteonectin cDNA and *in silico* analysis of protein conserved features: evidence for more than one osteonectin in Salmonidae. *Biochimie* 2005;87:411–420.
72. Shukunami C, Ishizeki K, Atsumi T, Ohta Y, Suzuki F, Hiraki Y. Cellular hypertrophy and calcification of embryonal carcinoma-derived chondrogenic cell line ATDC5 *in vitro*. *J Bone Miner Res* 1997;12:1174–1188.
73. Gibson GJ, Flint MH. Type X collagen synthesis by chick sternal cartilage and its relationship to endochondral development. *J Cell Biol* 1985;101:277–284.
74. Lefebvre V, Garofalo S, de Crombrughe B. Type X collagen gene expression in mouse chondrocytes immortalized by a temperature-sensitive simian virus 40 large tumor antigen. *J Cell Biol* 1995;128:239–245.
75. Avaron F, Hoffman L, Guay D, Akimenko MA. Characterization of two new zebrafish members of the hedgehog family: atypical expression of a zebrafish *indian hedgehog* gene in skeletal elements of both endochondral and dermal origins. *Dev Dyn* 2006;235:478–489.
76. Renn J, Winkler C. Characterization of *collagen type 10a1* and *osteocalcin* in early and mature osteoblasts during skeleton formation in medaka. *J Appl Ichthyol* 2010;26:196–201.
77. Cheah KS, Lau ET, Au PKC, Tam PPL. Expression of the mouse α 1(II) collagen gene is not restricted to cartilage during development. *Development* 1991;111:945–953.
78. Bi W, Deng JM, Zhang Z, Behringer RR, de Crombrughe B. *Sox9* is required for cartilage formation. *Nat Genet* 1999;22:85–89.
79. Ng LJ, Wheatley S, Muscat GE, Conway-Campbell J, Bowles J, Wright E, *et al.* SOX9 binds DNA, activates transcription, and coexpresses with type II collagen during chondrogenesis in the mouse. *Dev Biol* 1997;183:108–121.
80. Zhao Q, Eberspaecher H, Lefebvre V, De Crombrughe B. Parallel expression of *Sox9* and *Col2a1* in cells undergoing chondrogenesis. *Dev Dyn* 1997;209:377–386.

Address correspondence to:

Prof. M. Leonor Cancela
Department of Biomedical Sciences and Medicine (DCBM)
University of Algarve
Campus de Gambelas
Faro 8005-139
Portugal

E-mail: lcancela@ualg.pt