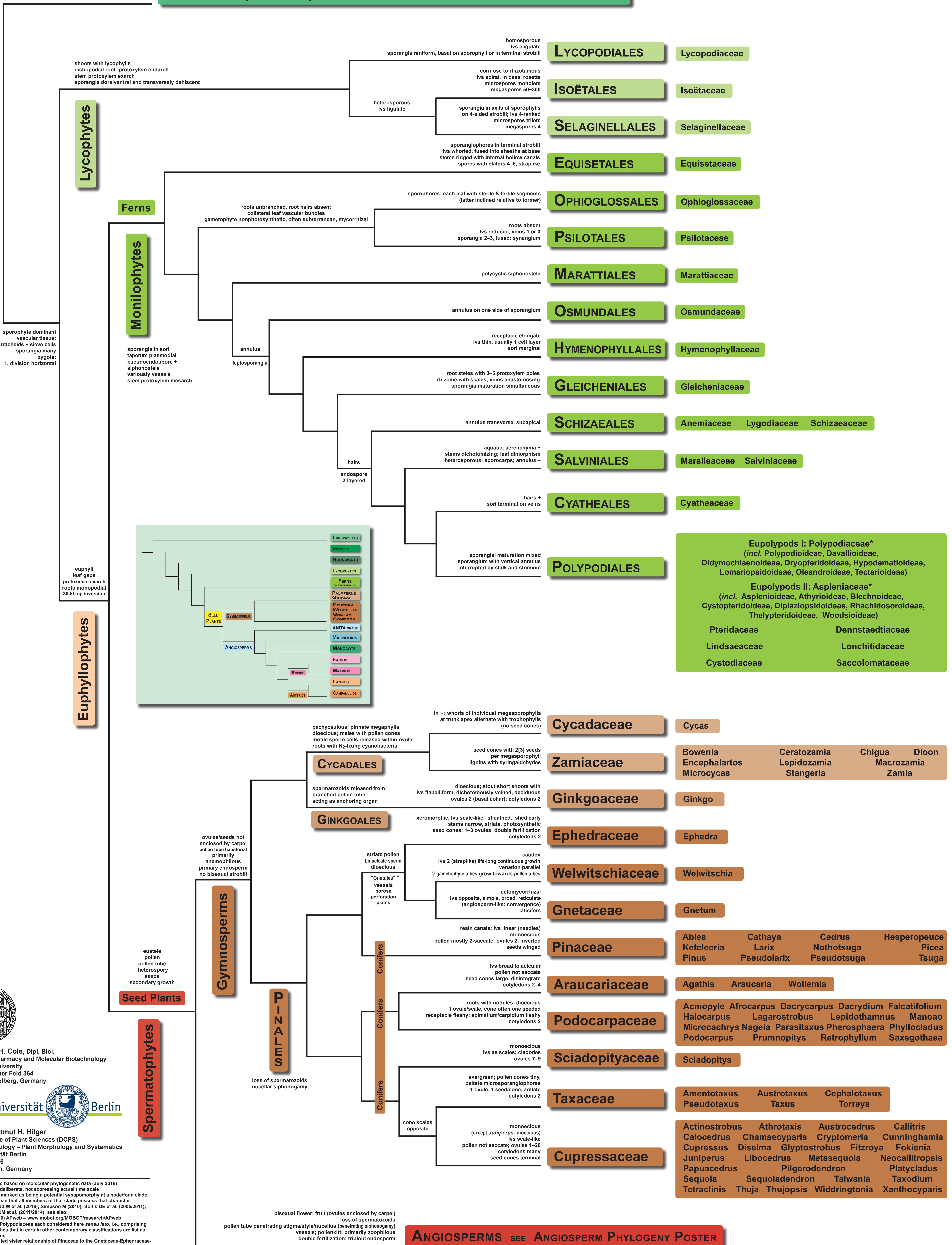


TRACHEOPHYTE PHYLOGENY

Vascular Plants – Systematics and Characteristics

HORNWORTS, MOSSES, LIVERWORTS SEE "BRYOPHYTE" PHYLOGENY POSTER



Theodor C. H. Cole, Dipl. Biol.
Institute of Pharmacy and Molecular Biotechnology
Heidelberg University
Im Neuenheimer Feld 364
D-69120 Heidelberg, Germany

Freie Universität Berlin

Prof. Dr. Hartmut H. Hilger
Dahlem Centre of Plant Sciences (DCPS)
Institute of Biology – Plant Morphology and Systematics
Freie Universität Berlin
Altensteinstr. 6
D-14195 Berlin, Germany

*hypothetical tree based on molecular phylogenetic data (July 2016)
-branch lengths deliberate, not expressing actual time scale
-if a character is marked as being a potential synapomorphy at a node for a clade, this does not mean that all members of that clade possess that character

*References: Judd W et al. (2016); Simpson M (2010); Soltis DE et al. (2005/2011); Christenhusz MJM et al. (2011/2014); see also: Stevens PF (2016) APweb – www.mobot.org/MOBOT/research/APweb

*Atriacae and Polyodiaceae each considered here *sensu lato*, i.e., comprising several subfamilies that in certain other contemporary classifications are list as individual families
** the here presented sister relationship of Pinaceae to the Gnetaceae-Ephedraceae-Welwitschiaceae clade ("Gnepine"), remaining controversial to date, places the latter within Pinaceae and thus Gnetales would not represent a separate order