

INTERNATIONAL JOURNAL of RENEWABLE ENERGY RESEARCH
P. Livreri et al., Vol.8, No.1, March, 2018

Dynamic Reconfiguration of Electrical Connections for Partially Shaded PV Modules: Technical and Economical Performances of an Arduino-Based Prototype

P. Livreri, M. Caruso, V. Castiglia, F. Pellitteri and G. Schettino

Department of Energy, Information engineering and Mathematical models

University of Palermo, Viale delle Scienze, Building nr. 9, 90128, Palermo, (Italy)

Email: patrizia.livreri@unipa.it; massimo.caruso16@unipa.it; v.castiglia90@gmail.com; filippo.pellitteri@unipa.it; giuseppe.schettino@unipa.it.

‡Corresponding Author: Giuseppe Schettino, Viale delle Scienze, Building nr. 9, 90128, Palermo, (Italy), Tel: +39 09123860208, giuseppe.schettino@unipa.it

Received: 04.07.2017 Accepted: 25.07.2017

Abstract- The partial shading phenomenon is a well known problem of photovoltaic plants. Partial shading leads to undesirable effects such the electrical mismatch, the generation of hot spots, and generally the decrease of production of electric energy. To mitigate the last effect, a dynamic reconfiguration of the electrical connections between modules was taken into account. In this paper, starting from an already developed system for a small-scale photovoltaic plant reconfiguration, the study of the economical benefits of the employment of a reconfigurator are traced. Five different incentive policies of diverse Countries have been considered to evaluate the increase of Net Present Value of system with and without a reconfigurator.

Keywords- Photovoltaic reconfiguration; solar modules; renewable energies; photovoltaic array.

1. Introduction

Nowadays, a massive use of renewable energy sources is a favorable option towards a sustainable development of the human community. It can be stated that the solar energy is one of the most commonly adopted sources of energy because of its benefits such as inexhaustibility and cleanness [1].

In this context, the energy efficiency enhancement is a very critical issue faced by the scientific community for the production of maximum power [2-4]. For this purpose, new generation of PV arrays and multitudes of modules integrated on different surfaces are investigated worldwide. However, photovoltaic arrays composed by a high number of modules can be more easily affected by partial shading, which is a very crucial challenge determined by different

causes, such as the non uniformity of either the clouds distribution or the solar radiation on the array, leading to a significant loss in terms of PV energy production.

The effects of the partial shading can be understood through the obtainment of a proper model [5-14], in order also to evaluate the economical aspects.

The mismatch among cells of the same module leads to a performance deterioration of the whole photovoltaic module: in case of series connection, the lowest-current cell limits the whole array; in case of parallel connection, the lower-no-load-voltage cell limits the parallel array. The electrical mismatch leads to a reduction of the produced power, meaning that the total available power is less than the maximum power which is available from the single cells. The mismatch losses (ML) concerning a single PV module represent therefore the difference between the sum of the

maxima power levels obtainable from the single separated cells and the maximum power obtainable from the whole module in case of electrical mismatch.

It is commonly known that partial shading conditions could lead to a significant reduction of the electrical energy generated by the PV modules. This drawback has been extensively studied in the scientific literature and several methods have been proposed and mainly divided into two categories: the active methods and the passive methods. Among the latest category, the adoption of bypass diodes is one of the most used techniques [15]. Nevertheless, bypass diodes connected in anti-parallel with PV cells or modules determine the variation of their electric characteristics in case of non-uniform irradiation [5]. In case of uniform irradiation, the voltage-power (V-P) characteristics of a PV module shows one peak; instead, in case of partial shading on the module, multiple peaks on the V-P characteristics occur. In the general case of series-connected cells, with bypass diodes and under different irradiation levels, on the V-P characteristics of the whole series array different peaks are visible, as shown in Fig. 1. In the case of parallel connection of different series PV arrays, with bypass diodes and under different irradiation levels, the characteristics of the whole PV module show an analogous shape. As shown by Fig. 1, two different regions are identifiable: region A, showing the lowest voltage values, and region B, showing the highest voltage values. In Fig. 2 a detailed explanation of the electrical operation is reported, concerning the simple case of two series-connected PV cells.

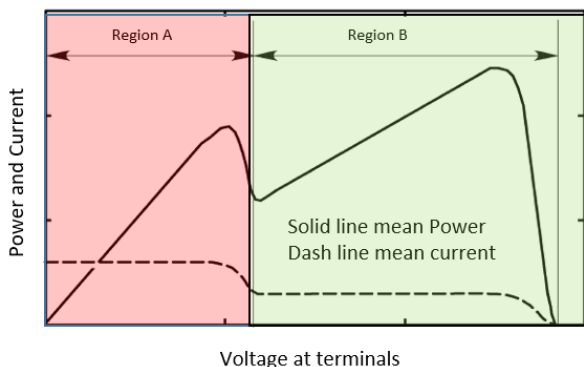


Fig. 1. V-I and V-P characteristics of two series-connected cells, provided with bypass diodes, in partial shading [8].

If the current in the cell A (I_a) is equal to the current in the cell B (I_b), meaning that both the cells present the same irradiation level, the total series voltage is the sum of the single nominal voltage cells. If I_b is higher than I_a , meaning that two different irradiation levels concern the cells, part of the current in the cell B may flow across the diode connected to the cell A: in this case, the voltage across the cell A is ideally zero, so that the total series voltage is about the single nominal voltage of the cell B, meaning that the working area is the region A, according to Fig. 1.

If, even for different irradiation levels, the bypass diode is not in conduction, the same current flows across both the cells, equal to the less irradiated cell current. Therefore, a

double power peak occurs, one in region A and one in region B.

From the previously mentioned statements, it appears clear that this passive method is relatively expensive, due to the fact that it requires a high number of diodes. Furthermore, the power losses are not completely avoided and the conduction of the diodes can affect the MPPT algorithms of Maximum Power Point Tracking (MPPT) [16].

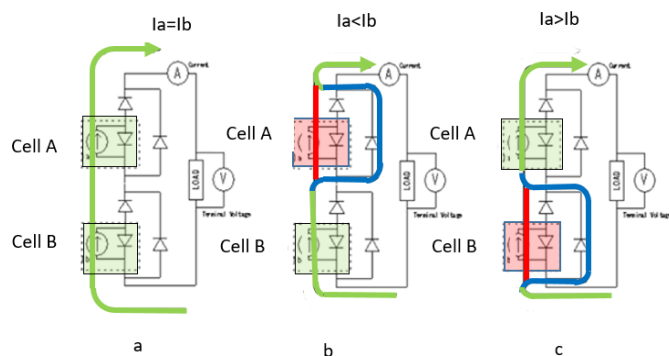


Fig. 2. Possible paths of current in the following cases: a) $I_a = I_b$; b) $I_a < I_b$; c) $I_a > I_b$. With reference to the regions A and B when one of the two cell is shaded: the red line is the current path corresponding to the region A; the green line represents the current path corresponding to the region B [8]

An active method is represented by the distributed MPPT, where each PV module is connected to its MPPT DC-DC converter. In this way, the mismatch conditions caused by the partial shading is corrected through the research of the maximum power, enhancing the efficiency [17-18]. However, the high-cost of this technique limits its diffusion.

Another active method consists in the dynamic reconfiguration of the PV array electrical connections, which is an effective solution consisting in grouping cells (or modules) with similar characteristics.

By considering a specified shading condition, the electrical connections of the PV modules are properly changed by following an adequate reconfiguration algorithm, as reported in [17-35].

This paper recalls an already developed system at the SDES (Sustainable Development and Energy Savings) Laboratory [7] and evaluates the economical benefits of the use of an advanced reconfiguration system on different incentive policies of diverse Countries. The following sections propose the already done design and the experimental validation of a reconfiguration algorithm of the electrical connections of a PV array composed by six modules. The measurements are carried out on a resistive load and the improvement provided by the proposed algorithm are described and discussed.

Once obtained the performances of the reconfiguration system in the increase of power, the economic aspects are evaluated to establish the return of the investment by the Net Present Value technique.

2. Proposed Reconfiguration Algorithm

The proposed PV reconfiguration system [7] has been designed for a small-scale array, which is composed by 6 modules connected in order to obtain an array of two parallel-connected strings of three series-connected modules (E215P, type, Conergy Inc.), whose main characteristics are summarized in Table 1, whereas the maximum power point voltage and current of the whole array are reported in Table 2. The overall power reachable with the PV system is equal to 1.3 kWp at full irradiation.

Table 1. Electrical characteristics of each module

Maximum power	P_m	215 [W]
Maximum power point voltage	V_{MPP}	28.27 [V]
Maximum power point current	I_{MPP}	7.59 [A]
Open circuit voltage	V_{OC}	36.37 [V]
Short-circuit current	I_{SC}	8.21 [A]

Table 2. Electrical characteristics of the PV array

$V_{MPP,array}$	84.81 [V]
$I_{MPP,array}$	15.18 [A]

It is clear that in case of partial shading, the maximum obtainable power is strictly dependent on the electrical connections between each of the PV modules. With an equal level of shading, the maximum reachable power is higher when the shaded modules belong to the same string. Therefore, an algorithm capable of a real-time reconfiguration of the electrical connections of the modules in order to obtain the maximum possible power could be a great aid to the PV array for its efficiency enhancement.

For each module, two possible irradiance states have been supposed for the proposed algorithm: shaded or not shaded. The proposed PV array in its “base configuration” (which is the configuration corresponding to the condition of uniform irradiance where all modules are either shaded or not shaded) is shown in Fig. 3 shows the photovoltaic array in the base configuration, where the String I is composed by the modules nr. 1, 2 and 3, while the String II is composed by the modules nr. 4, 5 and 6.

The proposed algorithm implies that the base configuration is kept only when three modules in the same string are either shaded or not shaded.

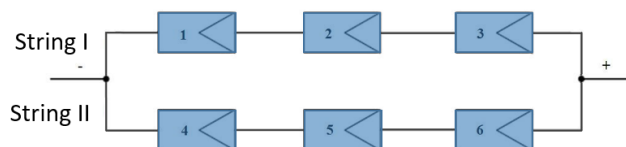


Fig. 3. Base configuration of the connections between the modules.

In any other case as far as the distribution of radiation is concerned, the algorithm leads to a reconfiguration of the array, so that a new configuration, different from the base one, has to be achieved.

Among all the possible cases of solar irradiation of the PV modules, 9 configurations (different from the base one) have been identified and obtained from the electrical position exchange between two modules of different strings, obtaining 10 overall configurations summarized in Table 3 and numbered from 0 (base configuration) to 9. From this Table it appears evident that the number of new configurations is the result of the product between the number of modules of String I and String II, corresponding to the all the possible exchanges between the modules of both Strings.

All the possible shading conditions are grouped in the first column of Table 1, whereas the second column highlights the exchange between two modules, corresponding to the specific shading condition reported in the same row, and, finally, the third column describes the new configuration in terms of PV modules of the same String. The proposed system is implemented without the use of any pyranometer, which leads to a low-cost solution. In fact, each module can be adequate classified by detecting its voltage.

The choice of the threshold voltage is based on the maximum sensed voltage and a specific voltage difference ΔV_T . The ΔV_i difference between the voltage of the i^{th} module and the maximum sensed voltage is compared to the ΔV_T value, which is properly selected. If $\Delta V_i < \Delta V_T$, the i^{th} is identified as not shaded; if $\Delta V_i > \Delta V_T$, the i^{th} module is identified as shaded. After this classification of the modules of the photovoltaic array, the proper reconfiguration occurs according to the described algorithm. The whole reconfiguration algorithm is displayed in the flow diagram of Fig. 4.

The voltages across the modules are sensed at regular times, each represented by the delay block in the flow diagram. The value of the delay time must result from the trade-off between the required sensitivity to the variations of the solar radiation and a good immunity to temporary changes, not worth the power loss arising during the switching phase leading to the new configuration.

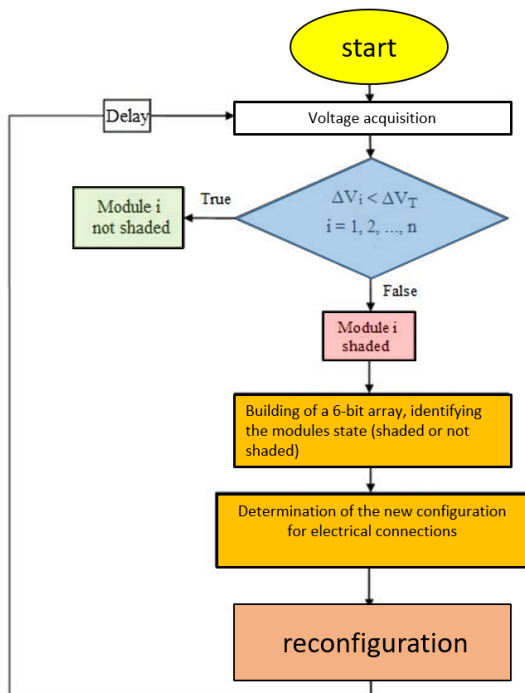


Fig. 4. Flow diagram of the reconfiguration procedure [7]

3. Reconfiguration Board

The proposed reconfiguration algorithm has been designed experimentally implemented through means of a reconfiguration board, which is mainly composed by the following components:

- a Switching Matrix (*SM*)
- a Sensing Network (*SN*)
- a Control Unit (*CU*)

The switching matrix implements the actual configurations of the electrical connections of the six PV modules.

The *SM* is composed by 25 normally-open-contact relays. The *SN* is composed by two current sensors and six voltage transducers for the real-time detection of both the current and the voltage along the two strings, respectively. The control unit recognizes the shading conditions of the modules by acquiring the voltages generated by the six modules through means of the sensing network. According to the logic described in Section II, the *CU* outputs the signals needed for the conversion of the PV array in the related new configuration.

Table 3. Electrical characteristics of the PV array

Conditions of shading	Exchange	New configuration
(1-6 shaded) or (1-3 shaded) or (4-6 shaded) or (1-6 not shaded)	/	0 (base) ST I: 1-2-3 ST II: 4-5-6
(1,4 shaded) or (1,6 shaded) or (1,4,6 shaded) or (5,2,3 shaded)	1↔5	1 ST I: 1-4-6 ST II: 2-3-5
(1,5 shaded) or (1,4,5 shaded) or (6,2,3 shaded)	1↔6	2 ST I: 1-4-5 ST II: 2-3-6
(2,4 shaded) or (2,4,6 shaded) or (2,6 shaded) or (5,1,3 shaded)	2↔5	3 ST I: 1-3-5 ST II: 2-4-6
(2,5 shaded) or (2,4,5 shaded) or (6,1,3 shaded)	2↔6	4 ST I: 1-3-6 ST II: 2-4-5
(3,4 shaded) or (3,4,6 shaded) or (3,6 shaded) or (5,1,2 shaded)	3↔5	5 ST I: 1-2-5 ST II: 3-4-6
(3,5 shaded) or (3,5,6 shaded) or (4,1,2 shaded)	3↔4	6 ST I: 1-2-4 ST II: 3-5-6
(1,5,6 shaded) or (4,2,3 shaded)	1↔4	7 ST I: 2-3-4 ST II: 1-5-6
(2,5,6 shaded) or (4,1,3 shaded)	2↔4	8 ST I: 1-3-4 ST II: 2-5-6
(3,4,5 shaded) or (6,1,2 shaded)	3↔6	9 ST I: 1-2-6 ST II: 3-4-5

The CU has been implemented with the *Arduino Mega 2560* system because of its great advantages in terms of low-cost and easy-programmable solution.

The assembled reconfiguration board with its own components (except for the CU, which has been assembled in a separate board) is depicted in Fig. 5.

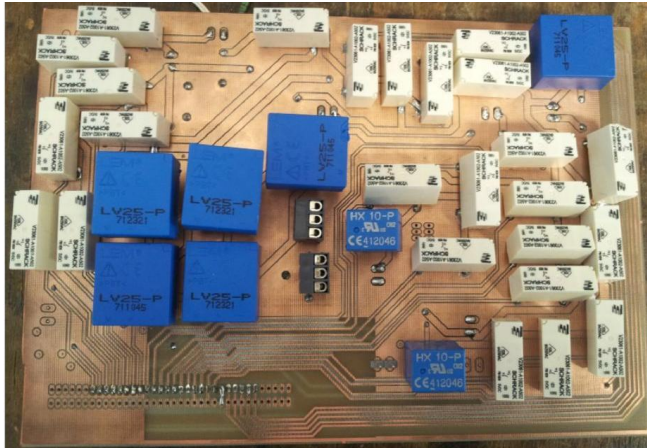


Fig. 5. The reconfiguration board.

4. Experimental Tests and Results

This Section provides the experimental tests of the proposed reconfiguration board in order to validate the benefits provided by the proposed algorithm in terms of maximum achievable power. The algorithm of the described strategy has been loaded to the Arduino control unit, which has been also connected to the reconfiguration board. Moreover, a 10 minutes of time delay between two consecutive voltage acquisitions has been chosen. Fig. 6 shows the schematic of the circuit for the power measurements, where the PV array composed by 2 strings of three modules is connected to a variable resistance R_L by means of a switch S and a power analyzer is adopted for the real-time measurement of the main electrical quantities involved in the system.

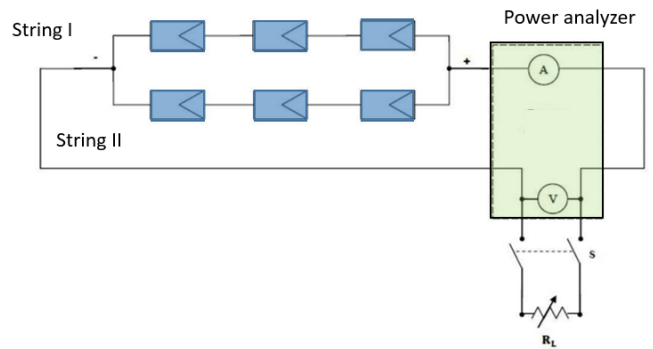


Fig. 6. Schematic of the circuit for the power measurements.

Moreover, a pyranometer is used for the measurements of the irradiance and a thermometer is adopted in order to detect the temperature of the PV cell. A double-layer of a plastic mesh is used to cover the PV modules, artificially emulating specific partial shading conditions and estimating a 60% of reduction in terms of irradiance.

The power/voltage characteristics in three different conditions have been achieved through means of three sets of measurements: the first one with a base configuration of the PV modules and an uniform solar radiation for all six modules, the second one with a shading condition for modules nr. 3 and 6 and the third set of measurement with modules nr. 3 and 6 shaded but with a new configuration of the array, according to the proposed algorithm. The tests have been performed in a sunny winter morning with an average temperature of 17.5°C .

Therefore, the P-V characteristics for these three different conditions are plotted in the same graph of Fig. 8. From this Figure it can be noticed that for both shading conditions (brown and blue curves), the output generated power is comprehensively lower with respect to a full and uniform irradiation (red curve).

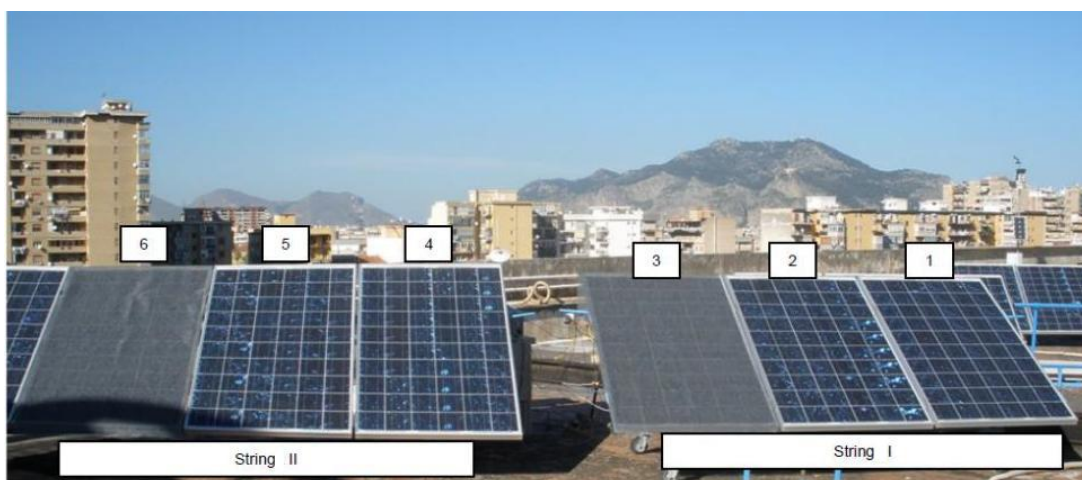


Fig. 7. Artificial shading on two modules of different strings.

However, the peak of power obtained with the reconfiguration system (curve nr. III) is higher than the power peak for the second set of measurement (curve nr. II). Thus, a 10% of maximum achievable power increase is obtained from the adoption of the proposed reconfiguration algorithm.

In addition, it can be noticed that the real-time detection of both voltage and current of the modules allows the proposed hardware to be flexible towards the implementation of different algorithms.

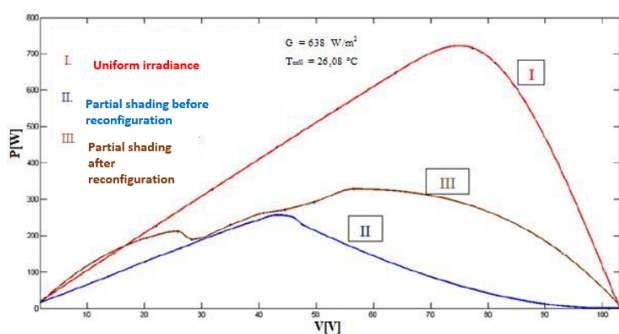


Fig. 8. Comparison between the measured power curves versus the voltage across the photovoltaic array. The parameters T and G represent the average values of irradiance and cell temperature, respectively.

5. Evaluation of the Economical Convenience

The aim of this section is to establish the economical convenience of the PV reconfiguration system, by considering the year of the installation of the plant itself.

This convenience is evaluated through the Net Present Value – NPV [35]. This method allows to obtain the result from a sum of cash flows actualized at time zero with a rate equal to the opportunity cost of the financial capital:

$$NPV = -C_0 + \sum_{k=1}^n \frac{C_k}{(1+i)^k} \quad (1)$$

where C_0 is the original investment (cost of the PV plants), C_k is the cash flow at the year k , i is the interest rate and k is the period of net cash flow. Therefore, a positive value of NPV indicates a convenience in terms of investment and *vice versa*. For its computing, the yearly data of the PV incomes and expenses, namely cash flows, are needed and their calculation is based by considering the interest rate MARR (Minimum Attractive Rate of Return). This parameter symbolizes the amount of assumed earnings for the investment. Thus, the NPV allows the estimation of the expected cash flow in a given period. Two investments can be, then, matched by comparing the NPV values obtained from them.

For each of the selected countries, the following data have been considered:

- Interest rate $i\%$ equal to 5%;

- Period of investment equal to 20 years.

According to [14], the increase of the NPV is evaluated for Italy, Bulgaria, Romania, Croatia and Turkey. In order to take an incentive policy for Italy the Conto Energia V was considered.

The case study consists of a PV plant with an installation cost of 7000 € and assuming the average consumption per capita of a family composed by four elements that live in the capitals of the countries taken into account. For maintenance and management of the PV plant, an amount equal to a 100 €/year has been considered. In addition, several faults of the inverter during the lifetime of the PV system has been considered. Thus, a six years of lifetime for the inverter is considered and the cost for its substitution has been estimated to € 750,00.

During the lifetime of the PV plant a decrease of the energy production has been taken into account. More in detail, for the first year a reduction equal to 3% and a reduction equal to 0.5% for the later years

The effect of shading comes from the first year onwards, and it is assumed a 10% daily loss of energy, which can be compensated by reconfiguration strategies (10% is also the power recovered by considering the presence of the reconfiguration system and the absence of it).

The sum of energy self-consumed is evaluated as the minimum between the energy produced and the energy consumed, while the amount of energy injected to the network is calculated as the difference between the energy produced and energy consumed. A positive result of this difference determines the cancellation of the related bill.

Table 4 shows the main features of the different countries taken in the study: cost of the PV plant [€], Average annual consumption [kWh/year], energy price [€/kWh], incentive [€/kWh], annual PV production [kWh/year]. For this economical study, an average energy increase of about 10% provided by the use of a reconfiguration system has been assumed.

Moreover, the cost of the reconfiguration system of about 250 € with lifetime equal to 6 years has been estimated, after which, as in the case of the inverter, a replacement is required. The second line represents the percentage of NPV recoverable, if from the first year of shading a reconfiguration system is introduced. It may be noted that the prototype is unable to fully recover NPV, but it makes a significant contribution.

Table 4. Parameters in different countries

	PV plant cost [€]	Annual consumption [kWh/year]	Energy price [€/kWh]	Incentive [€/kWh]	PV production [kWh/year]
Italy	7000	3200	0.20	0.208 (20 years)	4950

Bulgaria	7000	4640	0.09	0.24 (20 years)	4500
Romania	7000	2495	0.12 5	0.16 (15 years)	4200
Greece	7000	5029	0.18	0.14 (20 years)	5550
Turkey	7000	2836	0.13 1	0.12 (10 years)	5100

Table 5 shows the percent variance of the calculated NPV values for the different countries taken into account.

Table 5. Variation of NPV in different countries

	Italy	Bulgaria	Romania	Greece	Turkey
ΔNPV w/o rec	-30%	-53%	-121%	-717%	-45%
ΔNPV with rec	+9%	+24%	+84%	+249%	+34%

It is interesting to note that the use of dynamic reconfiguration system allow to obtain positive values of the percentage variances of the NPV calculated for every country taken into account. In the case of Italy it is to be underlined that this good economic results is not anymore obtainable since this incentive has been suppressed. So this advanced device is actually convenient only for Bulgaria, Romania , Greece and Turkey.

6. Conclusions

This paper, starting from an already developed prototype in the SDES laboratory, has presented the economical benefit of the use of a reconfiguration system of the electrical connections of a PV array. The printed circuit board of the designed system has been assembled and tested on a small-scale plant, but its results can be exported to more extended systems. In case of partial shading condition, a 10% of increase in terms of maximum produced power is obtained with the implementation of the proposed algorithm.

The economic analysis has been performed and the effects of the reconfiguration system have been evaluated for the increase of the Net Present Value, demonstrating that for quite all the countries taken into account the proposed reconfiguration system provides economical benefits.

Acknowledgements

This work was financially supported by MIUR - Ministero dell'Istruzione, dell'Università e della Ricerca (Italian Ministry of Education, University and Research) and

by SDESLab (Sustainable Development and Energy Saving Laboratory) of the University of Palermo.

References

- [1] R. Miceli, "Energy Management and Smart Grids," *Energies*, vol. 6, pp. 2262–2290, 2013.
- [2] A. Tariq and J. Asghar, "Development of an Analog Maximum Power Point Tracker for Photovoltaic Panel," in *Power Electronics and Drives Systems, 2005. PEDS 2005. International Conference on*, 2005, vol. 1, pp. 251–255.
- [3] L. K. Biswas, M. H. Rahman, and S. Haque, "A low cost characteristics analyzer of PV module," in *Developments in Renewable Energy Technology (ICDRET), 2012 2nd International Conference on the*, 2012, pp. 1–5.
- [4] D. Wang, "A method for instantaneous measurement of PV V-I characteristics and its application for MPPT control," in *Photovoltaic Specialists Conference (PVSC), 2010 35th IEEE*, 2010, pp. 2904–2907
- [5] A. Kajihara and T. Harakawa, "Model of photovoltaic cell circuits under partial shading," in *Industrial Technology, 2005. ICIT 2005. IEEE International Conference on*, 2005, pp. 866–870.
- [6] H. Patel and V. Agarwal, "MATLAB-Based Modeling to Study the Effects of Partial Shading on PV Array Characteristics," *Energy Conversion, IEEE Transactions on*, vol. 23, pp. 302–310, Mar. 2008..
- [7] G. Cipriani, V. Di Dio, N. Madonia, R. Miceli, F. Pellitteri and F. R. Galluzzo, "Reconfiguration strategies to reduce mismatch effects on PV array: An Arduino-based prototype," *2014 International Symposium on Power Electronics, Electrical Drives, Automation and Motion*, Ischia, 2014, pp. 1003-1008. doi: 10.1109/SPEEDAM.2014.6872115
- [8] D. D. Nguyen and B. Lehman, "Modeling and Simulation of Solar PV Arrays under Changing Illumination Conditions," in *Computers in Power Electronics, 2006. COMPEL '06. IEEE Workshops on*, 2006, pp. 295–299.
- [9] Viola, F., Romano, P., Sanseverino, E.R., Miceli, R., Cardinale, M., Schettino, G., "An economic study about the installation of PV plants reconfiguration systems in Italy, (2014) 3rd International Conference on Renewable Energy Research and Applications, ICRERA 2014, art. no. 7016534, pp. 989-994
- [10] Viola, F., Romano, P., Miceli, R., Spataro, C., Schettino, G., Fanto, F., "Economic benefits of the use of a PV plants reconfiguration systems, (2016) 2015 International Conference on Renewable Energy Research and Applications, ICRERA 2015, art. no. 7418687, pp. 1654-1658.

- [11] Viola, F., Romano, P., Miceli, R., Spataro, C., Schettino, G., Survey on power increase of power by employment of PV reconfigurator, (2016) 2015 International Conference on Renewable Energy Research and Applications, ICRERA 2015, art. no. 7418689, pp. 1665-1668
- [12] Schettino, G., Caruso, M., Miceli, R., Romano, P., Viola, F., Economic evaluation on the use of reconfiguration systems for increase of energy production in PV plants, (2016) Proceedings - 2016 IEEE International Power Electronics and Motion Control Conference, PEMC 2016, art. no. 7752028, pp. 384-387.
- [13] Viola, F., Romano, P., Miceli, R., Spataro, C., Schettino, G., Technical and economical evaluation on the use of reconfiguration systems in some EU countries for PV plants, (2017) IEEE Transactions on Industry Applications, 53 (2), art. no. 7736973, pp. 1308-1315.
- [14] Caruso, M., Di Noia, L.P., Romano, P., Schettino, G., Spataro, C., Viola, F., PV reconfiguration systems: A technical and economic study (2017) Journal of Electrical Systems, 13 (1), pp. 55-73
- [15] S. Silvestre, A. Boronat, and A. Chouder, "Study of bypass diodes configuration on PV modules ," *Applied Energy* , vol. 86, pp. 1632–1640, 2009.
- [16] N. Gokmen, E. Karatepe, F. Ugranli, and S. Silvestre, "Voltage band based global MPPT controller for photovoltaic systems ," *Solar Energy* , vol. 98, Part C, pp. 322–334, 2013.
- [17] S. Poshtkouhi, V. Palaniappan, M. Fard, and O. Trescases, "A General Approach for Quantifying the Benefit of Distributed Power Electronics for Fine Grained MPPT in Photovoltaic Applications Using 3-D Modeling," *Power Electronics, IEEE Transactions on*, vol. 27, pp. 4656–4666, Nov. 2012.
- [18] P. Tsao, S. Sarhan, and I. Jorio, "Distributed max power point tracking for photovoltaic arrays," in *Photovoltaic Specialists Conference (PVSC), 2009 34th IEEE*, 2009, pp. 2293–2298.
- [19] R. Candela, V. Di Dio, E. R. Sanseverino, and P. Romano, "Reconfiguration techniques of partial shaded PV systems for the maximization of electrical energy production," in *2007 International Conference on Clean Electrical Power, ICCEP '07*, 2007, pp. 716–719.
- [20] M. Z. S. El-Dein, M. Kazerani, and M. M. A. Salama, "Optimal photovoltaic array reconfiguration to maximize power production under partial shading," in *Environment and Electrical Engineering (EEEIC), 2012 11th International Conference on*, 2012, pp. 255–260.
- [21] G. Velasco-Quesada, F. Guinjoan-Gispert, R. Pique-Lopez, M. Roman-Lumbreras, and A. Conesa-Roca, "Electrical PV Array Reconfiguration Strategy for Energy Extraction Improvement in Grid-Connected PV Systems," *Industrial Electronics, IEEE Transactions on*, vol. 56, pp. 4319–4331, Nov. 2009.
- [22] P. dos Santos, E. M. Vicente, and E. R. Ribeiro, "Reconfiguration methodology of shaded photovoltaic panels to maximize the produced energy," in *Power Electronics Conference (COBEP), 2011 Brazilian*, 2011, pp. 700–706.
- [23] B. Patnaik, P. Sharma, E. Trimurthulu, S. P. Duttagupta, and V. Agarwal, "Reconfiguration strategy for optimization of solar photovoltaic array under non-uniform illumination conditions," in *Photovoltaic Specialists Conference (PVSC), 2011 37th IEEE*, 2011, pp. 1859–1864.
- [24] D. La Manna, V. Li Vigni, E. Riva Sanseverino, V. Di Dio, and P. Romano, "Reconfigurable electrical interconnection strategies for photovoltaic arrays: A review," *Renewable and Sustainable Energy Reviews*, vol. 33, pp. 412–426, 2014.
- [25] Ngo Ngoc, T., Phung, Q.N., Tung, L.N., Riva Sanseverino, E., Romano, P., Viola, F., Increasing efficiency of photovoltaic systems under non-homogeneous solar irradiation using improved Dynamic Programming methods, (2017) *Solar Energy*, 150, pp. 325-334.
- [26] Sanseverino, E.R., Ngoc, T.N., Cardinale, M., Li Vigni, V., Musso, D., Romano, P., Viola, F., Dynamic programming and Munkres algorithm for optimal photovoltaic arrays reconfiguration. (2015) *Solar Energy*, 122, pp. 347-358.
- [27] M. Saadsaoud, H. Abbassi, S. Kermiche, and M. Ouada, "Study of Partial Shading Effects on Photovoltaic Arrays with Comprehensive Simulator for Global MPPT Control", *International Journal of Renewable Energy Research*. Turkey, vol. 6, no. 2, pp. 413-420, 2016.
- [28] Rodrigues, S., Coelho, M.B., Cabral, P., "Suitability analysis of solar photovoltaic farms: A Portuguese case study", (2017) *International Journal of Renewable Energy Research*, 7 (1), pp. 244-254.
- [29] Sayed Farzad Hosseini, Behnam Mostajeran Goortani, Mehdi Nirooman, "Instantaneous Responses of on-grid PV Plants to Changes in Environmental and Weather Conditions", *International Journal of Renewable Energy Research*. Turkey, Vol 6, No 4 (2016), pp 1296 - 1306, 2016.
- [30] Mouna Ben Smida, Anis Sakly, "A comparative study of different MPPT methods for grid-connected partially shaded photovoltaic systems", *International Journal of Renewable Energy Research*. Turkey, Vol 6, No 3, 1082-1090, 2016.
- [31] Balato, M., Costanzo, L., Vitelli, M., Reconfiguration of PV modules: A tool to get the best compromise between maximization of the

- extracted power and minimization of localized heating phenomena, (2016) *Solar Energy*, 138, pp. 105-118.
- [32] Balato, M., Costanzo, L., Vitelli, M., Series-Parallel PV array re-configuration: Maximization of the extraction of energy and much more (2015) *Applied Energy*, 159, pp. 145-160.
- [33] Sundaram, K.M., Anandhraj, P., Ambeth, V.V., "Photo-voltaic array fed transformer-less inverter with energy storage system for non-isolated micro inverter applications", (2017) *International Journal of Renewable Energy Research*, 7 (1), pp. 107-110.
- [34] Algarín, C.R., Castro, A.O., Naranjo, J.C., "Dual-axis solar tracker for using in photovoltaic systems", (2017) *International Journal of Renewable Energy Research*, 7 (1), pp. 137-145.
- [35] Vargas, C., Guamán, J., Nogales, R., Ríos, A., "Photovoltaic lighting system with intelligent control based on Zigbee And Arduino", (2017) *International Journal of Renewable Energy Research*, 7 (1), pp. 225-233.
- [36] Zaidi, A., Dahech, K., Damak, T., "Maximum power point tracking of photovoltaic systems based on fast terminal sliding mode controller", (2016) *International Journal of Renewable Energy Research*, 6 (4), pp. 1435-1445.
- [37] https://en.wikipedia.org/wiki/Net_present_value, (last visited on January 20, 2018).