



Title	The effect of temperature on the early development and starvation tolerance of yellow goosefish <i>Lophius litulon</i>
Author(s)	Nakaya, Mitsuhiro; Takeya, Yuhei; Suzuki, Ryo; Noro, Kyosei; Gao, Weifeng; Takatsu, Tetsuya
Citation	Aquaculture Science, 65(3), 251-254 https://doi.org/10.11233/aquaculturesci.65.251
Issue Date	2017-09-20
Doc URL	http://hdl.handle.net/2115/74036
Rights	© 2017 日本水産増殖学会
Type	article
File Information	Nakaya et al AS 65-2.pdf



[Instructions for use](#)

Short Paper

The effect of temperature on the early development and starvation tolerance of yellow goosfish *Lophius litulon*

Mitsuhiro NAKAYA^{1,*}, Yuhei TAKEYA², Ryo SUZUKI²,
Kyosei NORO², Weifeng GAO³ and Tetsuya TAKATSU⁴

Abstract: The effect of temperature (15, 18, and 21°C) on the early development and starvation tolerance of yellow goosfish *Lophius litulon* was investigated. The periods of initiation of first feeding and starvation tolerance were shortened with increasing temperature. The period of first feeding varied from 5 days after hatching (DAH) at 15°C to 3 DAH at 21°C. Yellow goosfish larvae can survive for approximately 9–15 DAH (50% mortality period) without feeding in 15–21°C, but such an extended period of starvation is considered to increase the cumulative mortality.

Key words: First feeding; Temperature; Yellow goosfish; Yolk exhaustion

Kawasaki (1983) reported decadal scale switches in the abundance and composition of plankton and fish (so-called regime shifts) in the population dynamics of various taxa. Thereafter, the effect of regime shifts on the population dynamics of commercially important fish species have been broadly discussed (Overland et al. (2008) and references therein). Natural mortality rates of fish are highest in the early life stages, therefore population dynamics of fish are most susceptible to fluctuations of survival during that period (e.g. Houde 1997; 2002). Temperature has important effects on larval fish growth and development from the viewpoint of yolk utilization, initiation of first feeding as well as starvation tolerance, and subsequent potential survival (Fukuhara 1990; Fuiman 2002; Martell et al. 2005). Blaxter (1992) suggested that increase of temperature will change the timing of ecological events such as the spring phytoplankton bloom and subsequent zooplankton response so influencing the match or mismatch of fish larvae with that of their food supply and

their predators. The relationship between successful recruitment leading to stock development of fishes and temperature in early life stages have been predicted (Nissling 2004; Petereit et al. 2008).

Yellow goosfish *Lophius litulon* is an important demersal fish that is distributed in Japan from south Hokkaido to Kyushu, the Bo-Hai Sea, the Yellow Sea and the East China Sea (Yamada et al. 2007). Catches of this species tend to widely fluctuate (Tominaga 1991; Suzuuchi 1993; Kawano 2010), and Nihira (2004) reported that their catch is closely related to regime shifts. For sustainable catch of this resource, it is necessary to clarify the trophic interactions of this species. There are some previous reports about age and growth (Takeya et al. 2017), maturation (Yoneda et al. 2001) and feeding habits (Kosaka 1966; Kawano 2011; Park et al. 2014). Though, the collection of the eggs and larvae (Mito 1963; Kim 1976; Hoshino et al. 2006), and the development processes in larval stages (Kim 1976) have been reported, there is still only a poor understanding of the early life stages. Most of Lophiidae are believed to release their eggs in large mucoid masses called egg veils (Mito 1963; Everly 2002), egg veils of yellow goosfish have been collected in the field at 16–20°C (15.9°C: Mito (1963); 18.2°C: Kim (1976); 19–20°C: Hoshino et al. (2006)). The larvae were collected in the intertidal zone at Haeundae, Busan from late June to early July (SST: 18.2°C, Kim 1976), however the effect of temperature on the early development of yellow goosfish has not yet been clarified. This study investigated the effect of temperature on the early development and starvation tolerance of yellow goosfish. We estimated the potential period that newly hatched larvae were able to survive without encountering appropriate environmental conditions in relation to food availability and ambient water temperature.

An egg veil of yellow goosfish (volume: ca. 20,000 cm³) was collected in the Tsugaru Strait off Aomori Prefecture (SST: 14.3°C), on 25 May 2016. A part of the egg veil (Fig. 1a, volume: ca. 1,000 cm³) was kept in a plastic bag containing 10 l of seawater (15°C) with oxygen and then transported to Hokkaido University, Hakodate by truck and ship. The egg

Received 2 June 2017; Accepted 6 July 2017.

¹ Faculty of Fisheries, Hokkaido University, 3-1-1, Minato-cho, Hakodate, Hokkaido, 041-8611, Japan.

² Aomori Prefectural Industrial Technology Research Center Fisheries Institute, Hiranai, Aomori, 039-3381, Japan.

³ Graduate School of Fisheries Sciences, Hokkaido University, 3-1-1, Minato-cho, Hakodate, Hokkaido, 041-8611, Japan.

⁴ Faculty of Fisheries Sciences, Hokkaido University, 3-1-1, Minato-cho, Hakodate, Hokkaido, 041-8611, Japan.

* Corresponding author: Tel. (+81) 138-40-5526; E-mail, mnakaya@fish.hokudai.ac.jp (M. Nakaya).

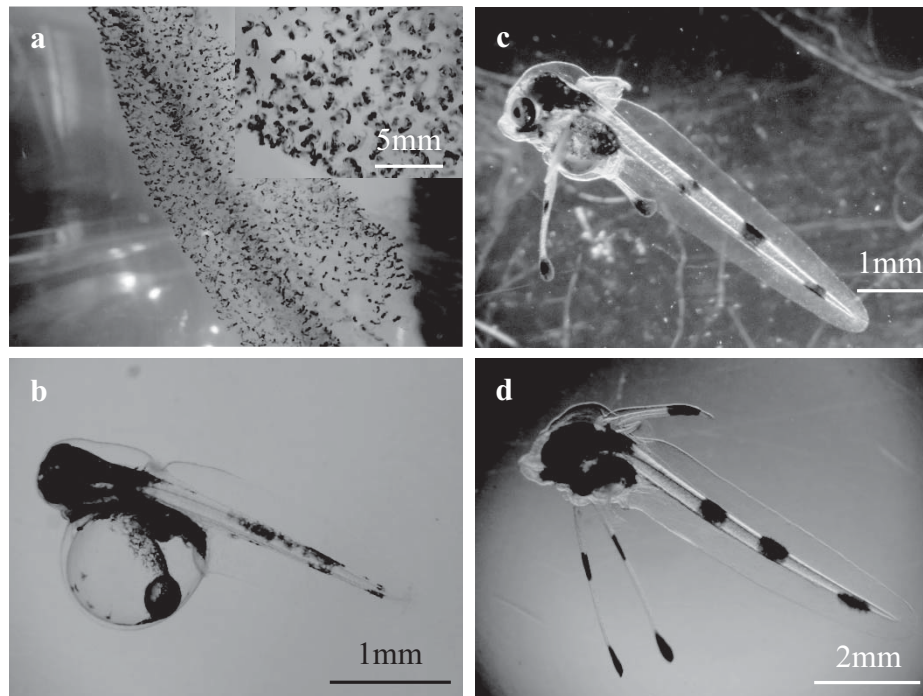


Fig. 1. Yellow goosfish *Lophius litulon* a, egg veil just before hatching, b, 1 day after hatching (DAH) larva, c, 6 DAH larva, and d, 9 DAH larva rearing at 18°C.

veil was stocked and then incubated in a 100 l circular shaped tank at a temperature range of 17–18°C (water exchange rate was 30% / day). Replicates of 20 newly hatched larvae (Fig. 1b) were collected and were stocked in glass beakers with 200 ml of artificial seawater (REI-SEA Marine II, Iwaki Co. Ltd, Japan: 17–18°C, 32–33 ppt). Four replicate beakers (each with 20 larvae) were set in temperature incubators and the water temperatures were gradually adjusted over a 24 hour period and then kept at 12, 15, 18 and 21°C. The photoperiod of 14L : 10D (as a natural light period in the Tsugaru Strait of the spawning season) was provided using fluorescent light. Twice a day (08:00–09:00 and 15:00–16:00), in two beakers for each temperature ($11.8 \pm 0.33^\circ\text{C}$ (mean \pm SD), $14.9 \pm 0.38^\circ\text{C}$, $17.7 \pm 0.44^\circ\text{C}$ and $21.2 \pm 0.44^\circ\text{C}$), we counted the number of living individuals and collected dead individuals. In the other two beakers in each temperature, observations of the morphological development and yolk exhaustion were carried out.

To estimate the developmental stage of first feeding, from 1 day after hatching (DAH) to reach the first feeding stage, rotifers *Brachionus plicatilis* sp. complex (enriched with Super Capsule A1 powder (Chlorella Industry Co., Ltd., Japan)) were given to the larvae at a density of 5.0 inds / ml twice a day (8:00 and 15:00) in a 30 l circular shaped tank at a temperature range of 17.2–19.2°C. From 11:00 to 12:00, we collected 10–20 larvae in the 30 l circular shaped

tank and checked their stomach contents. When over 50% of the larvae reached the developmental stage in each temperature, we defined it as the first feeding day. Relationships between mean rearing temperature and time to 50% hatch period or first feeding period were analyzed using the heat summation theory as Réaumur's law model

$$D = a / (T - t_0)$$

where D is time to 50% hatch in days or start feeding days, T is the mean rearing temperature ($^\circ\text{C}$), and a , t_0 are the effective accumulate temperature (degree-days) and threshold temperature ($^\circ\text{C}$), respectively.

Hatching rate was over 95% in the four temperatures (12, 15, 18 and 21°C). But in the 12°C rearing, larvae that showed low swimming activity were notably more observed than in the other rearing temperatures, and after 10 DAH (stage J: Kim (1976)), growth stagnation was observed. Hence, we discontinued the 12°C rearing experiment on 13 DAH. We observed the survival period of yellow goosfish larvae under starvation conditions at three temperatures (15, 18 and 21°C) to determine the relationship between survival and temperature. Thus, the first mortality was observed on 5.7, 4.0 and 3.7 DAH under the three ambient water temperatures (15, 18 and 21°C), respectively. The relationship between survival period of yellow goosfish larvae and water temperature is shown in Fig. 2. The mean 50% mortality period at the three temperatures (15, 18 and

21°C) was 14.6, 11.9 and 8.6 days, respectively (Fig. 3). The threshold temperature and effective accumulated temperature of the mean 50% mortality period were calculated to be 5.3°C and 142.9 degree-days. The rate of yolk exhaustion was more accelerated at the high temperature condition by 15–21°C. Kim (1976) reported that yellow goosfish larvae consumed the yolk almost completely at stages O, P (these stages are the first movement of the jaws). In this study, the first feeding was observed at the same stages (O, P), and the period was shortened with increasing temperature (Fig. 3). The threshold temperature and effective accumulated temperature of the first feeding period were calculated to be 8.7°C and 63.0 degree-days.

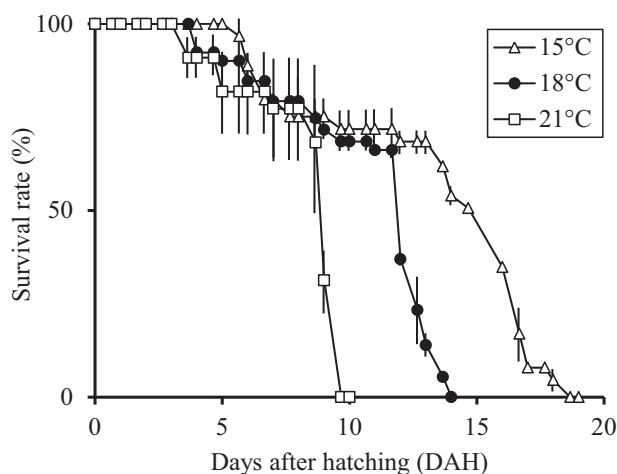


Fig. 2. Relationship between days after hatching (DAH) and survival rate for the unfed yellow goosfish larvae at three different water temperatures. Vertical bars show the standard deviation.

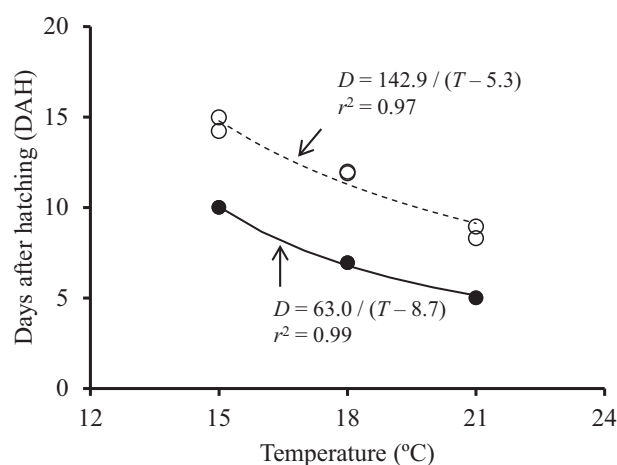


Fig. 3. Relationships between mean water temperature and 50% mortality period under starvation condition (open circles) and the developmental period from hatching to reach the first feeding stage (closed circles) in yellow goosfish. Effective degree-days model is given adjacent to the respective 50% mortality (broken line) and first feeding (thick line) period. D is time to 50% hatch or start feeding days, T is the mean rearing temperature (°C).

Exhaustion of endogenous reserves would be accelerated with increasing temperature. This result is supported by observations on the relationship between exhaustion of endogenous reserves and temperature (Laurence 1973; Matsuoka 2001). Survival and growth of the larvae strongly depend on temperature as well as the timing of initial feeding (Dou et al. 2005). This study suggests that yellow goosfish larvae can survive for approximately 9–15 days after hatching (50% mortality period) without feeding in 15–21°C, but such an extended period of starvation is considered to increase the cumulative mortality, e.g. “Growth-mortality hypothesis” (Anderson 1988), “Growth-predation hypothesis” (Campana 1996) and “Growth-selective mortality” (Takasuka et al. 2003). The theoretical lower critical temperature for larval development of yellow goosfish was 8.7°C. However, larvae showing low swimming activity were observed in 12°C rearing, therefore areas < 12°C may be inappropriate as nursery grounds. Further study is needed to research the effects of temperature and delayed initial feeding on the survival and growth of yellow goosfish larvae and to clarify the temperature affect by recruitment success in the field.

Acknowledgments

We are grateful for the help of Mr. Yoshitada Kindaichi (Ikokuma fisheries cooperative association) for collection of the egg veils, support and invaluable suggestions. We also thank members of the faculty of Fisheries Sciences, Hokkaido University who helped with laboratory experiments. This work was conducted under permits from Hokkaido University Manual for Implementing Animal Experimentation.

References

- Anderson, J. T. (1988) A review of size dependent survival during pre-recruit stages of fishes in relation to recruitment. *J. Northwest Atlantic Fish. Sci.*, **8**, 55–66.
- Blaxter, J. H. S. (1992) The effect of temperature on larval fishes. *Neth. J. Zool.*, **42**, 336–357.
- Campana, S. E. (1996) Year-class strength and growth rate in young Atlantic cod *Gadus morhua*. *Mar. Ecol. Prog. Ser.*, **135**, 21–26.
- Dou, S. Z., R. Masuda, M. Tanaka and K. Tsukamoto (2005) Effects of temperature and delayed initial feeding on the survival and growth of Japanese flounder larvae. *J. Fish Biol.*, **66**, 362–377.
- Everly, A. W. (2002) Stages of development of the goosfish, *Lophius americanus*, and comments on the phylogenetic significance of the development of the luring apparatus in Lophiiformes. *Environ. Biol. Fish.*, **64**, 393–417.
- Fuiman, L. A. (2002) Special considerations of fish eggs and larvae. In: *Fishery science: the unique contributions of early life stages* (ed. by L. A. Fuiman and R. G. Werner), Blackwell Science Publications Ltd, Oxford, pp. 1–32.
- Fukuhara, O. (1990) Effects of temperature on yolk utilization, initial growth, and behavior of unfed marine fish-larvae. *Mar. Biol.*, **106**, 169–174.

- Hoshino, N., S. Ichige, M. Suzuki, Y. Yamaguchi and S. Toyoshima (2006) Breeding experiment of anglerfish, *Lophius litulon* and examination as an object species farming. *Ibaraki Pref. Fish. Exp. Rep.*, **40**, 11-28 (in Japanese with English abstract).
- Houde, E. D. (1997) Mortality. In: *Early life history and recruitment in fish populations* (ed. by R. C. Chambers and E. Trippel), Chapman and Hall Publications Ltd, London, pp. 173-196.
- Houde, E. D. (2002) Mortality. In: *Fishery Science: the unique contributions of early life stages* (ed. by L. A. Fuiman and R. G. Werner), Blackwell Science Publications Ltd, Oxford, pp. 64-87.
- Kawano, M. (2010) Study on management of anglerfish, *Lophius litulon* in the southwestern Japan Sea- II A trial of population analysis of anglerfish. *Bull. Yamaguchi Pref. Fish. Res. Cent.*, **8**, 37-43 (in Japanese with English abstract).
- Kawano, M. (2011) Biological characteristics of anglerfish, *Lophius litulon* in the southwestern Japan Sea. *Bull. Yamaguchi Pref. Fish. Res. Cen.*, **9**, 115-118 (in Japanese with English abstract).
- Kawasaki, T. (1983) Why do some pelagic fishes have wide fluctuations in their numbers? *FAO Fish. Rep.*, **201**, 1055-1080.
- Kim, Y. U. (1976) On the morphology of larval stages of *Lophius litulon* (Jordan). *Bull. Korean Fish. Soc.*, **9**, 273-280 (in Korean with English abstract).
- Kosaka, M. (1966) Feeding habits of angler fish, *Lophius litulon*. *J. of Facul. of Mar. Sci. and Technol., Tokai Univ.*, **1**, 51-70 (in Japanese with English abstract).
- Laurence, G. C. (1973) Influence of temperature on energy utilization of embryonic and prolarval tautog, *Tautoga onitis*. *J. Fish. Res. Board Canada.*, **30**, 435-442.
- Martell, D. J., J. D. Kieffer and E. A. Trippel (2005) Effects of temperature during early life history on embryonic and larval development and growth in haddock. *J. Fish Biol.*, **66**, 1558-1575.
- Matsuoka, M. (2001) Influence of low temperature on hatching and survival rates at first feeding stage in the Japanese sardine. *Nippon Suisan Gakkaishi*, **67**, 894-895.
- Mito, S. (1963) Pelagic fish eggs from Japanese waters-X Gadida and Lophiida. *Jpn. J. Ichthyol.*, **11**, 103-113 (in Japanese with English abstract).
- Nihira, A. (2004) Climate change and population dynamics of demersal fishes. *J. North Jpn. Fish. Economics*, **32**, 42-50 (in Japanese).
- Nissling, A. (2004) Effect of temperature on egg and larval survival of cod (*Gadus morhua*) and sprat (*Sprattus sprattus*) in the Baltic Sea-implications for stock development. *Hydrobiologia*, **514**, 115-123.
- Overland J., S. Rodionov, S. Minobe and N. Bond (2008) North Pacific regime shifts: Definitions, issues and recent transitions. *Pro. Oceanogr.*, **77**, 92-102.
- Park, J. M., S. H. Huh, J. M. Jeong and G. W. Baeck (2014) Diet composition and feeding strategy of yellow goosefish, *Lophius litulon* (Jordan, 1902), on the southeastern coast of Korea. *J. Appl. Ichyol.*, **30**, 151-155.
- Petereit, C., H. Haslob, G. Kraus and C. Clemmesen (2008) The influence of temperature on the development of Baltic Sea sprat (*Sprattus sprattus*) eggs and yolk sac larvae. *Mar. Biol.*, **154**, 295-306.
- Suzuuchi, T. (1993) Yellow goosefish. *Hokusuishi Dayori*, **22**, 29-31 (in Japanese).
- Takasuka, A., I. Aoki and I. Mitani (2003) Evidence of growth-selective predation on larval Japanese anchovy *Engraulis japonicus* in Sagami Bay. *Mar. Ecol. Prog. Ser.*, **252**, 223-238.
- Takeya, Y., T. Takatsu, T. Yamanaka, Y. Shibata and M. Nakaya (2017) Using of the illicium for age determination and verification of yellow goosefish *Lophius litulon* off Aomori Prefecture, northern Japan. *Nippon Suisan Gakkaishi*, **83**, 9-17 (in Japanese with English abstract).
- Tominaga, O. (1991) Drastic increase in catch of yellow goosefish, *Lophius litulon*, in the coastal waters of western Hokkaido in 1989. *Sci. Rep. Hokkaido Fish. Exp. Stn.*, **36**, 13-17 (in Japanese with English abstract).
- Yamada, U., M. Tokimura, H. Horikawa and T. Nakabo (2007) *Fishes and fisheries of the East China and Yellow Seas*. Tokai Univ. Press, Hadano, Japan (in Japanese).
- Yoneda, M., M. Tokimura, H. Fujita, N. Takeshita, K. Takeshita, M. Matsuyama and S. Matsuura (2001) Reproductive cycle, fecundity, and seasonal distribution of the anglerfish *Lophius litulon* in the East China and Yellow Seas. *Fish. Bull.*, **99**, 356-370.