

Leukaemia Section

Short Communication

Anaplastic large cell lymphoma, ALK-negative

Rebecca L Boddicker, Andrew L Feldman

Department of Laboratory Medicine and Pathology, Mayo Clinic, Rochester, MN, USA.
Boddicker.rebecca@mayo.edu (RLB); Feldman.andrew@mayo.edu (ALF)

Published in Atlas Database: May 2016

Online updated version : <http://AtlasGeneticsOncology.org/Anomalies/ALCLALKnegID1705.html>

Printable original version : <http://documents.irevues.inist.fr/bitstream/handle/2042/68160/05-2016-ALCLALKnegID1705.pdf>

DOI: 10.4267/2042/68160

This work is licensed under a Creative Commons Attribution-Noncommercial-No Derivative Works 2.0 France Licence.
© 2016 Atlas of Genetics and Cytogenetics in Oncology and Haematology

Abstract

Review on Anaplastic large cell lymphoma, ALK-negative, with data on clinics, and the genes involved.

Keywords

Anaplastic large cell lymphoma, ALK-negative

Clinics and pathology

Disease

Anaplastic large cell lymphoma (ALCL), ALK-negative is a CD30-positive T-cell non-Hodgkin lymphoma that by definition resembles ALCL, ALK-positive but lacks ALK expression (Mason, Harris et al. 2008).

ALCL, ALK-negative was classified as a provisional entity distinct from ALCL, ALK-positive in the 2008 WHO classification, and is anticipated to be upgraded to a definite entity in the 2016 WHO update (Swerdlow, Campo et al. 2016).

Etiology

The etiology of ALCL, ALK negative is unknown.

Epidemiology

ALCL, ALK-negative makes up between 2.6% and 9.4% of T-/NK-cell non-Hodgkin lymphomas, with the lowest proportion occurring in Asia and the highest in Europe (Vose, Armitage et al. 2008). ALCL, ALK-negative generally occurs in older patients, with a median age of diagnosis of 55-60 years, compared to 25-35 years for ALK-positive ALCL (Ferreri, Govi et al. 2013).

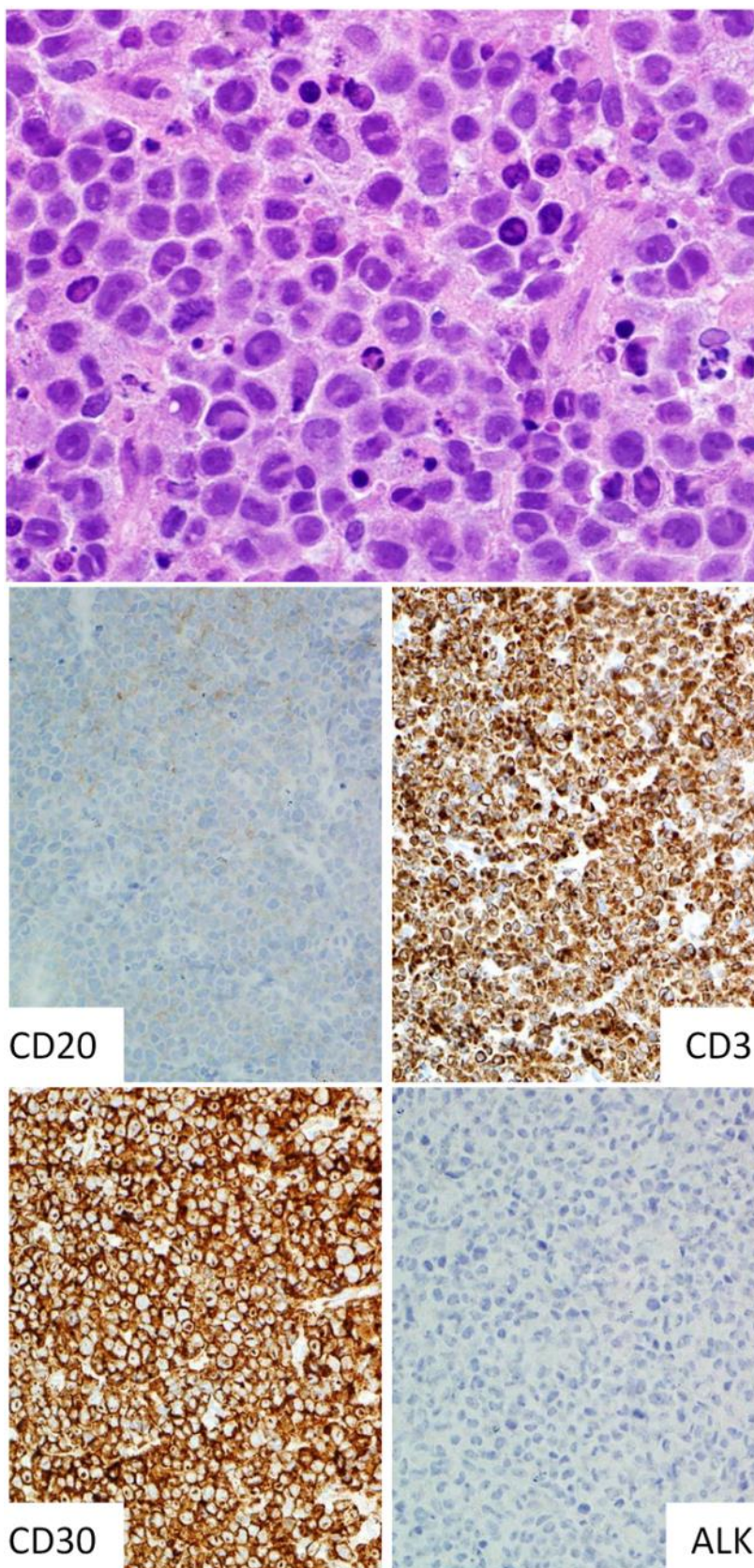
Males are affected more commonly than females (M:F, ~1.5:1).

Clinics

Patients with ALCL, ALK-negative typically present with lymphadenopathy, often with stage III/IV disease, and B symptoms (ten Berge, de Bruin et al. 2003). Extranodal sites also may be involved, including skin, bone, and soft tissues. Secondary cutaneous involvement by ALCL, ALK-negative must be distinguished from primary cutaneous ALCL, which is a distinct entity (Bekkenk, Geelen et al. 2000).

Pathology

By definition, the morphologic appearance is similar to that seen in ALCL, ALK-positive (Mason, Harris et al. 2008). Specifically, most cases resemble the so-called "common" pattern of ALK, ALK-positive and show sheet-like growth of tumor cells, sometimes sparing residual lymphoid follicles (Delsol, Falini et al. 2008). Sinusoidal involvement is common, and cohesive clusters of intrasinusoidal tumor cells may mimic metastatic carcinoma. The tumor cells typically are large and may show significant pleomorphism. So-called "hallmark" cells, with horseshoe-shaped or reniform nuclei, always can be identified (Benharroch, Meguerian-Bedoyan et al. 1998). Immunophenotyping studies are essential to the diagnosis of ALCL, ALK-negative. All cases express CD30 by definition. Aberrant loss of pan-T-cell antigen expression is common, and about two-thirds of cases express cytotoxic proteins (TIA1, granzyme B, or perforin) (Savage, Harris et al. 2008). ALK protein is absent.



ALCL, ALK-negative. The tumor is composed of sheets of large pleomorphic cells, some with horseshoe-shaped nuclei ("hallmark" cells; H&E, top). By immunohistochemical stains the tumor cells are negative for the B-cell marker, CD20; positive for the T-cell marker, CD3; positive for CD30; and negative for ALK.

Treatment

ALCL, ALK-negative is typically treated with CHOP (cyclophosphamide, doxorubicin, vincristine, and prednisone) or CHOP-like chemotherapy, often followed by autologous stem cell transplantation (Bennani-Baiti, Ansell et al. 2016). New targeted agents such as brentuximab vedotin and histone deacetylase inhibitors have demonstrated efficacy in relapsed and refractory disease.

Prognosis

The prognosis for ALCL, ALK-negative is poorer than for ALCL, ALK-positive, with a 5-year overall survival (OS) rate of 49% compared to 70% for the latter (Savage, Harris et al. 2008). However, prognosis is better than for most other types of T-cell non-Hodgkin lymphomas, including peripheral T-cell lymphoma, not otherwise specified (PTCL, NOS). Recent data have shown that ALCL, ALK-negative is a genetically heterogeneous disease, and that outcomes vary widely based on genetic subtype (Parrilla Castellar, Jaffe et al. 2014). Specifically, 5-year OS was very good (90%) in patients carrying DUSP22 rearrangements, poor (17%) in TP63/-rearranged cases, and intermediate (42%) in patients lacking ALK/, DUSP22, and TP63 rearrangements.

Genetics

Recurrent somatic mutations in the JAK1/ and/or STAT3/ genes have been reported in 18% of ALCL, ALK-negative (Crescenzo, Abate et al. 2015). JAK1 mutations were most commonly G1097D/S, while STAT3 mutations included Y640F, N647I, D661Y, and A662V.

Cytogenetics

Cytogenetics morphological

Copy number losses involving PRDM1 (6q21) and/or TP53/ (17p13) are recurrent in ALCL, ALK-negative, and have been associated with poor survival (Boi, Rinaldi et al. 2013).

Recurrent chromosomal rearrangements involving the DUSP22 -IRF4/ locus on 6p25.3 are present in ~30% of ALCL, ALK-negative (Feldman, Law et al. 2009; Feldman, Dogan et al. 2011; Parrilla Castellar, Jaffe et al. 2014). The most common partner is a non-genic region on 7q32.3. DUSP22 rearrangements are associated with decreased expression of the dual-specificity phosphatase gene, DUSP22; lack of cytotoxic marker expression; favorable prognosis; and distinct morphologic features (King, Dao et al. 2016).

Rearrangements involving TP63, most often partnering with TBL1XR1/ occur in ~8% of ALCL, ALK-negative and have been associated with poor prognosis (Vasmatzis, Johnson et al. 2012; Parrilla Castellar, Jaffe et al. 2014).

Gene fusions involving tyrosine kinase genes other than ALK have been reported in ALCL, ALK-negative, including TYK2 (t(10;19)(q24;p13) (NFKB2/TYK2), t(1;19)(p34;p13) (PABPC4/TYK2) and ROS1 (t(6;10)(q22;q24) (NFKB2/ROS1), (NCOR2/ROS1)(Crescenzo, Abate et al. 2015).

References

- Bekkenk MW, Geelen FA, van Voorst Vader PC, Heule F, Geerts ML, van Vloten WA, Meijer CJ, Willemze R. Primary and secondary cutaneous CD30(+) lymphoproliferative disorders: a report from the Dutch Cutaneous Lymphoma Group on the long-term follow-up data of 219 patients and guidelines for diagnosis and treatment. *Blood*. 2000 Jun 15;95(12):3653-61
- Benharroch D, Meguerian-Bedoyan Z, Lamant L, Amin C, Brugières L, Terrier-Lacombe MJ, Haralambieva E, Pulford K, Pileri S, Morris SW, Mason DY, Delsol G. ALK-positive lymphoma: a single disease with a broad spectrum of morphology. *Blood*. 1998 Mar 15;91(6):2076-84
- Bennani-Baiti N, Ansell S, Feldman AL. Adult systemic anaplastic large-cell lymphoma: recommendations for diagnosis and management. *Expert Rev Hematol*. 2016;9(2):137-50
- Boi M, Rinaldi A, Kwee I, Bonetti P, Todaro M, Tabbò F, Piva R, Rancoita PM, Matolcsy A, Timar B, Tousseyn T, Rodriguez-Pinilla SM, Piris MA, Beà S, Campo E, Bhagat G, Swerdlow SH, Rosenwald A, Ponzoni M, Young KH, Piccaluga PP, Dummer R, Pileri S, Zucca E, Inghirami G, Bertoni F. PRDM1/BLIMP1 is commonly inactivated in anaplastic large T-cell lymphoma. *Blood*. 2013 Oct 10;122(15):2683-93
- Crescenzo R, Abate F, Lasorsa E, Tabbo' F, Gaudiano M, Chiesa N, Di Giacomo F, Spaccarotella E, Barbarossa L, Ercole E, Todaro M, Boi M, Acquaviva A, Ficarra E, Novero D, Rinaldi A, Tousseyn T, Rosenwald A, Kenner L, Cerroni L, Tzankov A, Ponzoni M, Paulli M, Weisenburger D, Chan WC, Iqbal J, Piris MA, Zamo' A, Ciardullo C, Rossi D, Gaidano G, Pileri S, Tiacci E, Falini B, Shultz LD, Mevellec L, Vialard JE, Piva R, Bertoni F, Rabadan R, Inghirami G. Convergent mutations and kinase fusions lead to oncogenic STAT3 activation in anaplastic large cell lymphoma. *Cancer Cell*. 2015 Apr 13;27(4):516-32
- Vose J, Armitage J, Weisenburger D. International peripheral T-cell and natural killer/T-cell lymphoma study: pathology findings and clinical outcomes. *J Clin Oncol*. 2008 Sep 1;26(25):4124-30
- Delsol G., B. Falini, et al.. Anaplastic large cell lymphoma, ALK-positive. WHO Classification of Tumours of Haematopoietic and Lymphoid Tissues. International Agency for Research on Cancer: (2008) 312-316.
- Feldman AL, Law M, Remstein ED, Macon WR, Erickson LA, Grogg KL, Kurtin PJ, Dogan A. Recurrent translocations involving the IRF4 oncogene locus in peripheral T-cell lymphomas *Leukemia* 2009 Mar;23(3):574-80
- King RL, Dao LN, McPhail ED, Jaffe ES, Said J, Swerdlow SH, Sattler CA, Ketterling RP, Sidhu JS, Hsi ED, Karikhalli S, Jiang L, Gibson SE, Ondrejka SL, Nicolae A, Macon WR, Dasari S, Parrilla Castellar E, Feldman AL. Morphologic Features of ALK-negative Anaplastic Large Cell Lymphomas With DUSP22 Rearrangements *Am J Surg Pathol* 2016 Jan;40(1):36-43

Vose J, Armitage J, Weisenburger D; International T-Cell Lymphoma Project. International peripheral T-cell and natural killer/T-cell lymphoma study: pathology findings and clinical outcomes *J Clin Oncol* 2008 Sep 1;26(25):4124-30

Delsol G, Falini B, et al. Anaplastic large cell lymphoma, ALK-positive. WHO Classification of Tumours of Haematopoietic and Lymphoid Tissues. International Agency for Research on Cancer: (2008) 312-316.

Mason D, Y., Harris N, et al. Anaplastic large cell lymphoma, ALK-negative. WHO Classification of Tumours of Haematopoietic and Lymphoid Tissues. S. Swerdlow, E. Campo, N. Harris et al. Lyon, International Agency for Research on Cancer: (2008) 317-319.

Parrilla Castellar ER, Jaffe ES, Said JW, Swerdlow SH, Ketterling RP, Knudson RA, Sidhu JS, Hsi ED, Karikehalli S, Jiang L, Vasmataz G, Gibson SE, Ondrejka S, Nicolae A, Grogg KL, Allmer C, Ristow KM, Wilson WH, Macon WR, Law ME, Cerhan JR, Habermann TM, Ansell SM, Dogan A, Maurer MJ, Feldman AL. ALK-negative anaplastic large cell lymphoma is a genetically heterogeneous disease with widely disparate clinical outcomes *Blood* 2014 Aug 28;124(9):1473-80

Savage KJ, Harris NL, Vose JM, Ullrich F, Jaffe ES, Connors JM, Rimsza L, Pileri SA, Chhanabhai M, Gascoyne RD, Armitage JO, Weisenburger DD; International Peripheral T-Cell Lymphoma Project. ALK- anaplastic large-cell lymphoma is clinically and immunophenotypically different from both ALK+ ALCL and peripheral T-cell lymphoma, not otherwise specified: report from the

International Peripheral T-Cell Lymphoma Project *Blood* 2008 Jun 15;111(12):5496-504

Swerdlow SH, Campo E, Pileri SA, Harris NL, Stein H, Siebert R, Advani R, Ghielmini M, Salles GA, Zelenetz AD, Jaffe ES. The 2016 revision of the World Health Organization classification of lymphoid neoplasms *Blood* 2016 May 19;127(20):2375-90

Vasmataz G, Johnson SH, Knudson RA, Ketterling RP, Braggio E, Fonseca R, Viswanatha DS, Law ME, Kip NS, Ozsan N, Grebe SK, Frederick LA, Eckloff BW, Thompson EA, Kadin ME, Milosevic D, Porcher JC, Asmann YW, Smith DI, Kovtun IV, Ansell SM, Dogan A, Feldman AL. Genome-wide analysis reveals recurrent structural abnormalities of TP63 and other p53-related genes in peripheral T-cell lymphomas *Blood* 2012 Sep 13;120(11):2280-9

Vose J, Armitage J, Weisenburger D; International T-Cell Lymphoma Project. International peripheral T-cell and natural killer/T-cell lymphoma study: pathology findings and clinical outcomes *J Clin Oncol* 2008 Sep 1;26(25):4124-30

ten Berge RL, de Bruin PC, Oudejans JJ, Ossenkuppele GJ, van der Valk P, Meijer CJ. ALK-negative anaplastic large-cell lymphoma demonstrates similar poor prognosis to peripheral T-cell lymphoma, unspecified *Histopathology* 2003 Nov;43(5):462-9

This article should be referenced as such:

Boddicker RL, Feldman AL. Anaplastic large cell lymphoma, ALK-negative. *Atlas Genet Cytogenet Oncol Haematol.* 2017; 21(2):60-63.
