

# Gene Section

## Review

# IRS2 (insulin receptor substrate 2)

João Agostinho Machado-Neto, Paula de Melo Campos, Fabiola Traina

Department of Internal Medicine, University of São Paulo at Ribeirão Preto Medical School, Ribeirão Preto, São Paulo, (JAMN, FT), Hematology and Hemotherapy Center, University of Campinas - UNICAMP, Instituto Nacional de Ciência e Tecnologia do Sangue, Campinas, São Paulo, (PdMC) Brazil. [jamachadoneto@gmail.com](mailto:jamachadoneto@gmail.com), [pmcampos@gmail.com](mailto:pmcampos@gmail.com), [ftraina@fmrp.usp.br](mailto:ftraina@fmrp.usp.br)

Published in Atlas Database: May 2016

Online updated version : <http://AtlasGeneticsOncology.org/Genes/IRS2ID40994ch13q34.html>

Printable original version : <http://documents.irevues.inist.fr/bitstream/handle/2042/68156/05-2016-IRS2ID40994ch13q34.pdf>

DOI: 10.4267/2042/68156

This work is licensed under a Creative Commons Attribution-Noncommercial-No Derivative Works 2.0 France Licence.

© 2016 Atlas of Genetics and Cytogenetics in Oncology and Haematology

## Abstract

Insulin receptor substrate 2 (IRS2) belongs to the insulin receptor substrate protein family and was initially discovered as an alternative route for signaling mediated by the insulin receptor. Currently, IRS2 has been well-established to mediate mitogenic and antiapoptotic signaling from several important cellular receptors. In the last years, many studies have indicated that IRS2 participates in the regulation of important biological processes involved in cancer phenotype, including cell proliferation, clonogenicity, metabolism and survival. The present review contains data on IRS2 DNA/RNA, protein encoded and function.

**Keywords:** IRS2; mitogenic signaling; antiapoptotic signaling

## Identity

**Other names:** IRS-2, 4PS

**HGNC (Hugo):** IRS2

**Location :** 13q34

## DNA/RNA

### Description

IRS2 was discovered as an alternative route from signaling mediated by the insulin receptor in *Irs1* knockout mice (Patti, et al. 1995). The entire IRS2 gene is approximately 33.8 Kb (start: 109752698 and end: 109786568 bp; orientation: Minus strand) and contains 2 exons. The IRS2 cDNA contains 7 Kb.

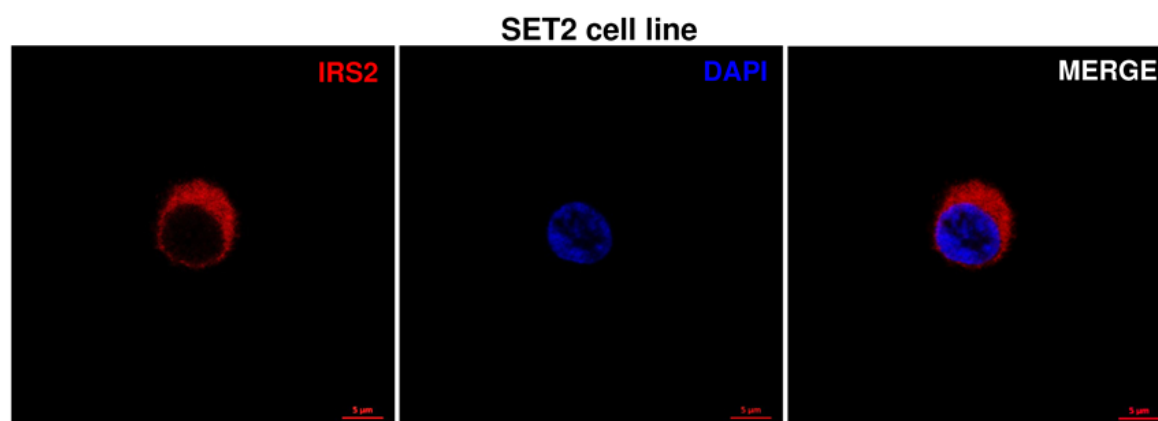
## Protein

### Description

IRS2 belongs to the insulin receptor substrate (IRS) protein family, which is characterized by the presence of a pleckstrin homology (PH) domain and a phosphotyrosine binding (PTB) domain (Figure 1) in their protein structure. The PH domain contributes to protein-protein binding and facilitates the recruitment of IRS proteins by cell membrane receptors.



**Figure 1. Schematic structure of IRS2.** The pleckstrin homology (PH) domain (purple), phosphotyrosine binding (PTB) domain (green) and kinase regulatory loop binding domain (KRLB) are illustrated in the Figure. Amino acid (aa) positions are indicated.



**Figure 2. Intracellular localization of IRS2 protein in the SET2 cell line.** Confocal analysis of SET2 (leukemia) cell line displaying IRS2 (red) and DAPI (blue) staining; MERGE shows the overlapped images. Scale bar: 5 μm, as indicated. Note the predominant cytoplasm localization of IRS2. Anti-IRS2 (sc-1555) was from Santa Cruz Biotechnology and DAPI (P-36931) was from Life Technologies (Carlsbad, CA, USA). Personal data.

The PTB domain contains multiple tyrosine sites for phosphorylation and is activated by cell receptors. Differently to other IRS family members, IRS2 has a kinase regulatory loop binding domain (KRLB) that contributes to the recruitment to cellular receptor (Mardilovich, et al. 2009a).

### Expression

Ubiquitous.

### Localisation

IRS2 protein is predominantly found in the cytoplasm (Figure 2).

### Function

IRS2 is a 180 kDa adapter protein described in 1995 as being equivalent to the 4PS protein previously identified as a substrate associated with the IL4 receptor in myeloid cells (Patti, et al. 1995). IRS2 mediates mitogenic and antiapoptotic signaling from insulin receptor (INSR), insulin-like growth factor 1 (IGF1R), erythropoietin receptor (EPOR), thrombopoietin receptor (MPL), vascular endothelial growth factor receptor VEGFR (KDR), leptin LEP, growth hormone (GH), interleukins and IFN $\alpha$ /IFN $\beta$ 1/IFN $\gamma$ , playing an important role in the response to stimuli for cytokines and growth factors, influencing the proliferation and survival of normal and cancer cells (Argetsinger, et al. 1996; Dearth, et al. 2007; Gibson, et al. 2007; Johnston, et al. 1995; Plataniias, et al. 1996; Sun, et al. 1995; Uddin, et al. 1995; Verdier, et al. 1997; White, et al. 1994; Yenush, et al. 1997). In addition, stimulation of the insulin receptor is known to result in IRS2 association with the p85 subunit of PI3K and GRB2, activating proteins involved in the PI3K/AKT/MTOR and MAPK pathways, respectively (Patti, et al. 1995; Velloso, et al. 2006)

(canonical pathway).

IRS2 also activates signaling pathways through other mechanisms (non-canonical pathways).

For instance, angiotensin II stimulates the rapid phosphorylation of JAK2 tyrosine residues, increasing its catalytic activity and JAK2 - IRS2 association (Folli, et al. 1997; Saad, et al. 1996; Saad, et al. 1995).

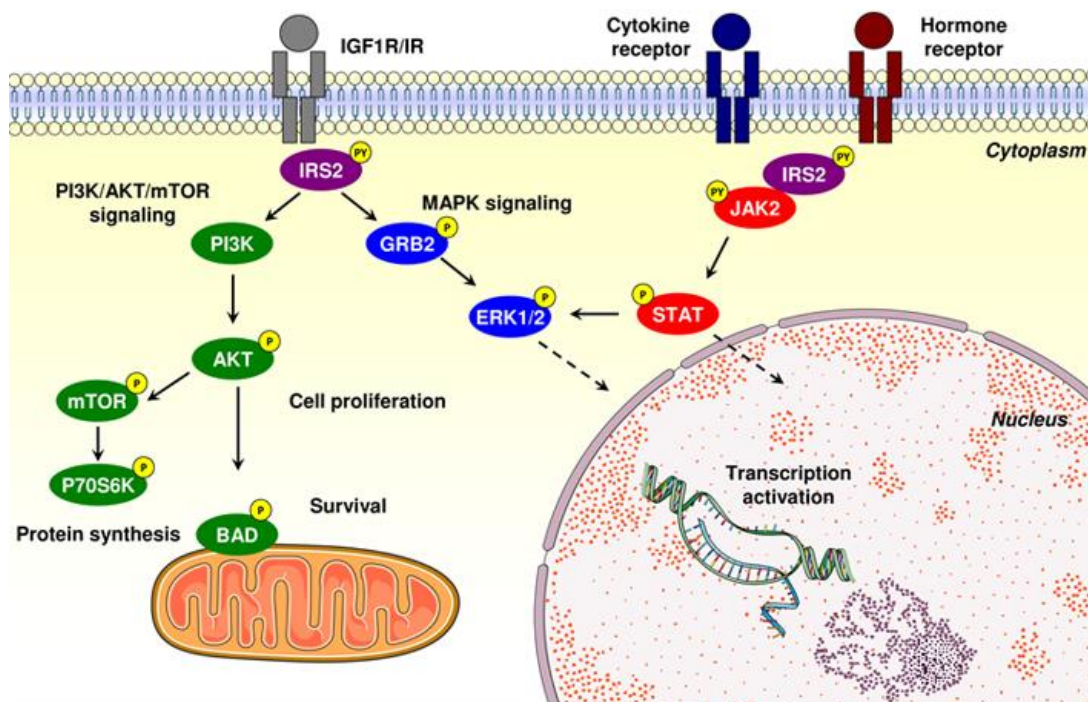
The IRS2 - JAK2 association has also been described in rat left ventricular cells after stimulation with angiotensin (Velloso, et al. 2006; Velloso, et al. 1996), and in rat liver after stimulation with leptin (Carvalho, et al. 2003). Similarly, the mutant form of JAK2 (JAK2<sup>V617F</sup>), which is constitutively activated, leads to enhanced interaction between JAK2 and IRS2 in myeloid cells (de Melo Campos, et al. 2016). The main signaling pathways stimulated by IRS2 are shown in Figure 3.

### Homology

The N-terminus of IRS2 shares high homology with that of the other members of the IRS protein family. IRS2 also has a high homology among different species (Table 1).

### Mutations

Recurrent mutations in the IRS2 gene are rare, and 88 substitution missense, 2 substitution nonsense, 38 substitution synonymous, 1 insertion inframe, 3 insertion frameshift, 4 deletions inframe and 3 deletion frameshift mutations are reported in COSMIC (Catalogue of somatic mutations in cancer; <http://cancer.sanger.ac.uk/cancergenome/projects/cosmic>).



**Figure 3. IRS2 signaling pathway.** IRS2 is recruited by its PH/PTB domains and phosphorylated in tyrosine residues by upstream tyrosine kinase receptors (e.g. insulin receptor [IR], insulin-like growth factor receptor [IGF1R]). Tyrosine phosphorylation of IRS2 triggers PI3K/AKT/mTOR and MAPK signaling activation (canonical pathway), regulating many biological processes, including cell proliferation, protein synthesis, survival and gene expression in specific human tissues. IRS2 is also activated by cytokine and hormone receptors (e.g. IL4, leptin, angiotensin), which additionally induce JAK2 stimulation and IRS2/JAK2 interaction, leading to STAT, PI3K/AKT/mTOR and MAPK signaling activation in rat and mouse tissues. Abbreviations: P, phosphorylation; PY, tyrosine phosphorylation. Figure was produced using Servier Medical Art (<http://www.servier.com/Powerpoint-image-bank>).

% Identity for: <i>Homo sapiens</i> IRS2	Symbol	Protein	DNA
vs. <i>P. troglodytes</i>	IRS2	96.9	97.7
vs. <i>M. mulatta</i>	IRS2	97.4	95.9
vs. <i>C. lupus</i>	IRS2	88.8	87.4
vs. <i>B. taurus</i>	IRS2	85.0	84.8
vs. <i>M. musculus</i>	Irs2	84.7	80.8
vs. <i>R. norvegicus</i>	Irs2	85.7	81.5
vs. <i>G. gallus</i>	IRS2	73.7	74.4
vs. <i>X. tropicalis</i>	LOC100498409	59.4	57.1
vs. <i>D. rerio</i>	Irs2	60.7	61.7
vs. <i>D. rerio</i>	zgc:56306	58.9	56.5

**Table 1.** Comparative identity of human IRS2 with other species (Source: <http://www.ncbi.nlm.nih.gov/homologene>)

## Implicated in

### Breast cancer

Jackson and colleagues (Jackson, et al. 1998) observed that IRS2 is widely expressed in breast cancer cell lines and primary breast cancer cells. In breast cancer patients, membrane localization of IRS-2 was associated with reduced overall survival

by multivariate analysis (Clark, et al. 2011). In breast cancer cell lines, high IRS2 expression was correlated with high breast tumor invasiveness (Porter, et al. 2013), and with increased survival and cell invasion under hypoxia conditions (Mardilovich, et al. 2009b). Breast cancer IRS2-depleted cells, using specific anti-sense constructs, presented reduced IGF1-mediated cell motility and lower anchorage independent growth (Jackson, et al. 2001). In agreement, others studies demonstrated that IRS2 activation was required for IGF1-induced cell motility of the human breast cell lines MCF-7 (Ibrahim, et al. 2008; Zhang, et al. 2004) and T47D-YA (Byron, et al. 2006). Nagle and colleagues (Nagle, et al. 2004), showed that mammary tumor cells from IRS2 knockout mice were less invasive and presented more prominent apoptotic response to growth factor deprivation compared to wild type mammary tumor cells. Using breast cancer cell lines, Morelli and colleagues (Morelli, et al. 2003) and Cui and colleagues (Cui, et al. 2003) also observed that IRS2 could be a target of estrogen and progesterone receptors, respectively. Cui and colleagues (Cui, et al. 2006) demonstrated that EGF signaling was also involved in IRS2 induction/activation at the mRNA and protein levels via c-JUN/AP-1 stimulation, establishing cross-talk between IGF1R and EGFR signaling. Furthermore, the authors demonstrated in

their study that IRS2 silencing reduced EGF-induced invasion and migration in the mammary adenocarcinoma cell line MDA-MB-468 (Cui, et al. 2006). Using the nontumorigenic mammary epithelial cell line MCF-10A and transgenic mice overexpressing human IRS2 by MMTV promoter, Death and colleagues (Death, et al. 2006) demonstrated the potential of malignant transformation of mammary cells by in vitro and in vivo IRS2 overexpression. Wu and colleagues (Wu, et al. 2010) observed that IRS2 silencing impaired breast cancer cell proliferation. In addition, they described that IGF1 induced nuclear translocation of IRS2 and NF $\kappa$ B, and promoted intranuclear association between IRS2 and NF $\kappa$ B in MCF-7 and BT-20 breast cancer cells, establishing a cross-talk between IGF1R and NF $\kappa$ B signaling. Slattery and colleagues (Slattery, et al. 2007), using a cohort of 1664 patients with breast cancer (1089 non-Hispanic white and 575 Hispanic) and 2054 controls (1328 non-Hispanic white and 726 Hispanic), found no association between IRS2 G1057D (rs1805097) polymorphism and breast cancer development. In contrast, Feigelson and colleagues (Feigelson, et al. 2008) observed an association between IRS2 polymorphisms rs4773082 (640 patients and 650 controls), rs2289046 (552 patients and 589 controls) and rs754204 (642 patients and 655 controls) and breast cancer development.

### **Colorectal cancer**

Slattery and colleagues (Slattery, et al. 2004), using a cohort of 1001 patients with colon cancer and 1167 controls, and 766 patients with rectal cancer and 983 controls, reported that IRS2 G1057D (rs1805097) heterozygote GD genotype significantly reduced the risk of colon, though not rectal, cancer. In contrast, Yukseloglu and colleagues (Yukseloglu, et al. 2014), observed no association between IRS2 G1057D (rs1805097) polymorphism and risk for disease in a group of 161 patients with colorectal cancer and 197 controls. Gunter and colleagues (Gunter, et al. 2007) observed no association of IRS2 polymorphisms rs2241745 (754 patients and 765 controls) and rs2289046 (744 patients and 758 controls) with advanced colorectal adenoma. IRS2 (rs2289046) GG genotype compared with AA plus AG genotypes was found to have a protective factor for colorectal cancer risk in normal weight subjects (Karimi, et al. 2013). Day and colleagues (Day, et al. 2013) described that IRS2 mRNA and protein levels were positively correlated with progression from normal through adenoma to carcinoma in colorectal cancer, and that deregulated IRS2 expression activated the PI3K/AKT pathway and increased cell adhesion. Using FISH analysis, Huang and colleagues (Huang, et al. 2015) demonstrated that IRS2 amplification was a recurrent event and that IRS2 levels modulated the sensibility of colorectal cancer cell lines to the

dual IGF-1R/IR inhibitor BMS-754807. In addition, the authors, using public available SNP array data on tumors, observed that the frequency of IRS2 copy number gain (648 samples evaluated from four datasets) is higher in colorectal cancer compared to other tumor types (Huang, et al. 2015).

### **Pancreatic cancer**

In the rat pancreas RINm5F cell line, Irs2, but not Irs1, phosphorylation was associated with IGF1 stimulated DNA synthesis (Zhang, et al. 1998). Kornmann and colleagues (Kornmann, et al. 1998) reported that IRS2 mRNA and protein were expressed in human pancreatic cancer cell lines (ASPC-1 and COLO-357), and highly expressed in primary pancreatic cancer samples compared with normal pancreatic samples. IGF1 and IGF2 enhanced cell growth, stimulated IRS2 tyrosine phosphorylation and IRS2/PI3K association in ASPC-1 and COLO-357 cells (Kornmann, et al. 1998). In ASPC-1 cell line, IGF1R/IRS2 axis controlled the VEGF transcription, indicating that this axis is an important mediator for tumor angiogenesis (Neid, et al. 2004).

### **Neuroblastoma**

In SH-SY5Y, a human neuroblastoma cell line lacking IRS1, IGF1 stimulation leads to IGF1R activation and IRS2 phosphorylation, and activates PI3K and MAPK signaling (Kim, et al. 1998; Kim, et al. 2004). IRS2 also protects SH-EP and SH-SY5Y neuroblastoma cell lines from glucose-induced apoptosis by activation of PI3K/AKT and MAPK signaling (Kim, et al. 2009; Stohr, et al. 2011).

### **Hepatocellular carcinoma**

Boissan and colleagues (Boissan, et al. 2005) reported an overexpression of IRS2 in murine models of hepatocarcinogenesis. IRS2 mRNA and protein were found to be overexpressed in human hepatoma cell lines and primary human hepatocellular carcinoma specimens (Boissan, et al. 2005; Cantarini, et al. 2006). Of note, inhibition of IRS2 by siRNA resulted in increased apoptosis in the hepatocellular carcinoma Hep3B cells. In the human hepatoma SMMC-7721 cell line, IRS2 silencing suppressed aflatoxin B1-induced PI3K/AKT and MAPK activation and cell migration (Ma, et al. 2012). Rashad and colleagues (Rashad, et al. 2014) observed, in 334 patients and 426 controls, that the D allele and the DD genotype of IRS2 G1057D (rs1805097) polymorphism were significantly associated with hepatocellular carcinoma risk.

### **Hematological malignancies**

IRS2 expression was found to be downregulated in myelodysplastic syndrome patients compared with healthy donors (Machado-Neto, et al. 2012).

Increased IRS2 expression and phosphorylation was observed during erythroid, granulocytic and megakaryocytic differentiation in established leukemia cell line models (Machado-Neto, et al. 2012). IRS2 was found to be constitutively associated with JAK2 in the JAK2<sup>V617F</sup>-mutated HEL cells, but not in the JAK2 wild type U937 cells (de Melo Campos, et al. 2016). In HEL cells, though not in U937 cells, IRS2 silencing reduced cell viability and increased apoptosis; these effects were enhanced when combined with ruxolitinib, a selective JAK1/2 inhibitor. In addition, CD34<sup>+</sup> cells from JAK2<sup>V617F</sup>-mutated myeloproliferative neoplasm patients presented increased IRS2 mRNA levels (de Melo Campos, et al. 2016). Savage and colleagues (Savage, et al. 2015) described IRS2 mutations (S594W and H1328R) in three out of 22 chronic myeloid leukemia patients with tyrosine kinase inhibitors resistance. Expression of each of the two of the IRS2 mutations in Ba/F3 cells demonstrated transformation capacity in the absence of IL3 (Savage, et al. 2015). When co-expressed in Ba/F3 cells with BCR-ABL1, these IRS2 mutants conferred varying degrees of reduced sensitivity to imatinib in vitro (Savage, et al. 2015).

### **Glioblastoma**

In a study focused on PI3K/AKT-related gene expression analysis in glioblastoma involving 103 patients, the IRS2 gene was amplified and overexpressed in 2 cases and IRS2 was also highly expressed in six cases with no demonstrated amplification (Knobbe, et al. 2003). Xu and colleagues (Xu, et al. 2011) identified IRS2 as a target of MicroRNA-153 and suggested that MicroRNA-153 suppressed PI3K/AKT signaling through IRS2 inhibition in the DBTRG-05MG human glioblastoma cell line.

### **Prostate cancer**

Szabolcs and colleagues (Szabolcs, et al. 2009) reported a high expression of IRS2 in prostate cancer cell lines and in primary human prostate cancer samples, in which IRS2 was also correlated with MYC expression in prostate tumor samples. Ibuki et al. (Ibuki, et al. 2014) demonstrated an elevated IRS2 expression by immunohistochemistry in prostate cancer biopsies when compared to normal specimens. The in vitro treatment of LNCaP human prostate cancer cells with NT157, a IRS1/2 inhibitor, resulted in increased apoptosis and decreased cell proliferation (Ibuki, et al. 2014). Huang and colleagues (Huang, et al. 2012) observed that IRS2 rs7986346 polymorphism was associated with disease progression and impaired survival in prostate cancer patients treated with androgen-deprivation.

### **Thyroid cancer**

In the FRTL-5 rat thyroid cell line, the "RET/PTC3 rearrangement" (inv(10)(q11q11) with NCOA4/RET rearrangement), a constitutively activated tyrosine kinase receptor that is frequent in papillary thyroid cancer, induces IRS2 upregulation, and enhances IRS2/PI3K interaction and AKT activation (Miyagi, et al. 2004).

Akker and colleagues (Akker, et al. 2014) observed no association between IRS2 G1057D (rs1805097) polymorphism and differentiated thyroid cancer development in a cohort of 93 differentiated thyroid cancer patients and 111 healthy controls.

### **Mesothelioma**

IRS2 was found to be highly expressed in pleural mesothelioma samples and associated with cell motility in the H2461 cell line (Hoang, et al. 2004).

### **Clear cell renal cell carcinoma**

Using semi-quantitative PCR, Al-Sarraf and colleagues (Al-Sarraf, et al. 2007) investigated IRS1, IRS2 and IRS5 mRNA expression in a cohort of 10 patients with clear cell renal carcinoma, comparing normal adjacent tissue with the respective tumor tissue for the analysis, and found an upregulation of IRS2 and IRS5 mRNA in tumor samples (Al-Sarraf, et al. 2007).

### **Endometrial cancer**

Cayan and colleagues (Cayan, et al. 2010) reported that IRS2 G1057D (rs1805097) polymorphism was associated with the development of endometrial cancer in a cohort of 44 patients with colon cancer and 101 controls.

### **Malignant peripheral nerve sheath tumor**

High expression of IRS2 was observed in malignant peripheral nerve sheath tumor compared to neurofibromas (Shaw, et al. 2012).

IRS2 expression was also associated with reduced survival in malignant peripheral nerve sheath tumors using univariate analysis (Shaw, et al. 2012).

### **Bladder cancer**

Using cDNA microarray analysis, Zekri and colleagues (Zekri, et al. 2015) found IRS2 upregulation among the genes differently expressed identified in bladder cancer.

### **Lung cancer**

Park and colleagues (Park, et al. 2015) identified IRS2 as a MIR146A (MicroRNA-146a) target and suggested that MicroRNA-146a might suppress lung cancer progression by IRS2 inhibition.

### **Melanoma**

In the MDA-MB-435 melanoma cell line, IRS2 signaling was identified as a key mediator of

invasion promoted by  $\alpha 6\beta 4$  (Shaw 2001). In A375 human melanoma cells, the in vitro treatment with NT157, a IRS1/2 inhibitor, led to growth suppression of melanoma cells by degradation of IRS1 and IRS2 (Reuveni, et al. 2013). Moreover, NT157 strongly inhibited the development of lung metastases of melanoma cells in mouse models (Reuveni et al, 2013).

### **Esophageal squamous cell carcinoma**

Liu and colleagues (Liu, et al. 2015) identified IRS2 as a target of MicroRNA-146a and suggested that MicroRNA-146a suppressed esophageal squamous cell carcinoma growth through inhibition of IRS2. Corroborating these findings, in the MicroRNA-146a-expressing EC109 esophageal squamous cell carcinoma cell line, IRS2 recovery experiments increased cell growth.

### **Gastric cancer**

Yamashita et al. (Yamashita, et al. 2006) described that IRS2 was methylation-silenced in gastric cancer specimens. Zhao and colleagues (Zhao, et al. 2012), reported that IRS2 G1057D (rs1805097) polymorphism was associated with increased susceptibility for gastric cancer in a cohort of 197 patients with gastric cancer and 156 age- and sex-matched controls.

### **Oral squamous cell carcinoma**

Gao and colleagues (Gao, et al. 2014) described that IRS2 expression was negatively associated with histological differentiation of oral squamous cell carcinoma. In addition, IRS2 inhibition reduces cell proliferation, clonogenicity, cell cycle progression and PI3K/AKT activation in the human oral squamous cell carcinoma Tca-8113 cell line (Gao, et al. 2014).

## **To be noted**

Homozygous absence of the *Irs2* gene results in **type II diabetes** and causes female infertility in mice (Burks, et al. 2000; Withers, et al. 1998). In view of the importance of IRS proteins for cancer development and progression, a great effort has been made in an attempt to develop or identify compounds capable of inhibiting signaling mediated by IRS proteins.

In this sense, a unique subfamily of IGF1R signaling inhibitors (NT compounds) has been developed (Reuveni, et al. 2013). NT157, the most characterized NT compound, binds to IGF1R and induces a conformational change, leading to the dissociation of IRS1/2 from the receptor and IRS1/2 degradation by the proteasome. NT157 was found to lead to long-lasting IGF1R inhibition, apoptosis, and present a potent antitumor effects in melanoma cells but not in normal melanocytes (Flashner-Abramson,

et al. 2015; Reuveni, et al. 2013), osteosarcoma cells (Garofalo, et al. 2015), prostate adenocarcinoma cells (Ibuki, et al. 2014) and colorectal cancer cells (Sanchez-Lopez, et al. 2015).

## **References**

- Akker M, Güldiken S, Sipahi T, Palabıyık O, Tosunođlu A, Çelik Ö, Tunçbilek N, Sezer A, Süt N. Investigation of insulin resistance gene polymorphisms in patients with differentiated thyroid cancer. *Mol Biol Rep.* 2014 May;41(5):3541-7
- Al-Sarraf N, Reiff JN, Hinrichsen J, Mahmood S, Teh BT, McGovern E, De Meyts P, O'byrne KJ, Gray SG. DOK4/IRS-5 expression is altered in clear cell renal cell carcinoma. *Int J Cancer.* 2007 Sep 1;121(5):992-8
- Argetsinger LS, Norstedt G, Billestrup N, White MF, Carter-Su C. Growth hormone, interferon-gamma, and leukemia inhibitory factor utilize insulin receptor substrate-2 in intracellular signaling. *J Biol Chem.* 1996 Nov 15;271(46):29415-21
- Boissan M, Beurel E, Wendum D, Rey C, Lécluse Y, Housset C, Lacombe ML, Desbois-Mouthon C. Overexpression of insulin receptor substrate-2 in human and murine hepatocellular carcinoma. *Am J Pathol.* 2005 Sep;167(3):869-77
- Burks DJ, Font de Mora J, Schubert M, Withers DJ, Myers MG, Towery HH, Altamuro SL, Flint CL, White MF. IRS-2 pathways integrate female reproduction and energy homeostasis. *Nature.* 2000 Sep 21;407(6802):377-82
- Byron SA, Horwitz KB, Richer JK, Lange CA, Zhang X, Yee D. Insulin receptor substrates mediate distinct biological responses to insulin-like growth factor receptor activation in breast cancer cells. *Br J Cancer.* 2006 Nov 6;95(9):1220-8
- Cantarini MC, de la Monte SM, Pang M, Tong M, D'Errico A, Trevisani F, Wands JR. Aspartyl-asparagyl beta hydroxylase over-expression in human hepatoma is linked to activation of insulin-like growth factor and notch signaling mechanisms. *Hepatology.* 2006 Aug;44(2):446-57
- Carvalho JB, Ribeiro EB, Folli F, Velloso LA, Saad MJ. Interaction between leptin and insulin signaling pathways differentially affects JAK-STAT and PI 3-kinase-mediated signaling in rat liver. *Biol Chem.* 2003 Jan;384(1):151-9
- Cayan F, Tok E, Aras-Ateş N, Ayaz L, Akbay E, Gen R, Karakaş S, Dilek S. Insulin receptor substrate-2 gene polymorphism: is it associated with endometrial cancer? *Gynecol Endocrinol.* 2010 May;26(5):378-82
- Clark JL, Dresser K, Hsieh CC, Sabel M, Kleer CG, Khan A, Shaw LM. Membrane localization of insulin receptor substrate-2 (IRS-2) is associated with decreased overall survival in breast cancer. *Breast Cancer Res Treat.* 2011 Dec;130(3):759-72
- Cui X, Kim HJ, Kuitse I, Kim H, Brown PH, Lee AV. Epidermal growth factor induces insulin receptor substrate-2 in breast cancer cells via c-Jun NH(2)-terminal kinase/activator protein-1 signaling to regulate cell migration. *Cancer Res.* 2006 May 15;66(10):5304-13
- Cui X, Lazard Z, Zhang P, Hopp TA, Lee AV. Progesterone crosstalks with insulin-like growth factor signaling in breast cancer cells via induction of insulin receptor substrate-2. *Oncogene.* 2003 Oct 9;22(44):6937-41
- Day E, Poulgiannis G, McCaughan F, Mulholland S, Arends MJ, Ibrahim AE, Dear PH. IRS2 is a candidate driver

- oncogene on 13q34 in colorectal cancer. *Int J Exp Pathol*. 2013 Jun;94(3):203-11
- Dearth RK, Cui X, Kim HJ, Kuitatse I, Lawrence NA, Zhang X, Divisova J, Britton OL, Mohsin S, Allred DC, Hadsell DL, Lee AV. Mammary tumorigenesis and metastasis caused by overexpression of insulin receptor substrate 1 (IRS-1) or IRS-2. *Mol Cell Biol*. 2006 Dec;26(24):9302-14
- Feigelson HS, Teras LR, Diver WR, Tang W, Patel AV, Stevens VL, Calle EE, Thun MJ, Bouzyk M. Genetic variation in candidate obesity genes ADRB2, ADRB3, GHRL, HSD11B1, IRS1, IRS2, and SHC1 and risk for breast cancer in the Cancer Prevention Study II. *Breast Cancer Res*. 2008;10(4):R57
- Flashner-Abramson E, Klein S, Mullin G, Shoshan E, Song R, Shir A, Langut Y, Bar-Eli M, Reuveni H, Levitzki A. Targeting melanoma with NT157 by blocking Stat3 and IGF1R signaling. *Oncogene*. 2016 May 19;35(20):2675-80
- Folli F, Kahn CR, Hansen H, Bouchie JL, Feener EP. Angiotensin II inhibits insulin signaling in aortic smooth muscle cells at multiple levels. A potential role for serine phosphorylation in insulin/angiotensin II crosstalk. *J Clin Invest*. 1997 Nov 1;100(9):2158-69
- Gao L, Wang X, Wang X, Zhang L, Qiang C, Chang S, Ren W, Li S, Yang Y, Tong D, Chen C, Li Z, Song T, Zhi K, Huang C. IGF-1R, a target of let-7b, mediates crosstalk between IRS-2/Akt and MAPK pathways to promote proliferation of oral squamous cell carcinoma. *Oncotarget*. 2014 May 15;5(9):2562-74
- Garofalo C, Capristo M, Mancarella C, Reunevi H, Picci P, Scotlandi K. Preclinical Effectiveness of Selective Inhibitor of IRS-1/2 NT157 in Osteosarcoma Cell Lines. *Front Endocrinol (Lausanne)*. 2015;6:74
- Gibson SL, Ma Z, Shaw LM. Divergent roles for IRS-1 and IRS-2 in breast cancer metastasis. *Cell Cycle*. 2007 Mar 15;6(6):631-7
- Gunter MJ, Hayes RB, Chatterjee N, Yeager M, Welch R, Schoen RE, Yakochi L, Schatzkin A, Peters U. Insulin resistance-related genes and advanced left-sided colorectal adenoma. *Cancer Epidemiol Biomarkers Prev*. 2007 Apr;16(4):703-8
- Hoang CD, Zhang X, Scott PD, Guillaume TJ, Maddaus MA, Yee D, Kratzke RA. Selective activation of insulin receptor substrate-1 and -2 in pleural mesothelioma cells: association with distinct malignant phenotypes. *Cancer Res*. 2004 Oct 15;64(20):7479-85
- Huang F, Chang H, Greer A, Hillerman S, Reeves KA, Hurlburt W, Cogswell J, Patel D, Qi Z, Fairchild C, Ryseck RP, Wong TW, Finckenstein FG, Jackson J, Carboni JM. IRS2 copy number gain, KRAS and BRAF mutation status as predictive biomarkers for response to the IGF-1R/IR inhibitor BMS-754807 in colorectal cancer cell lines. *Mol Cancer Ther*. 2015 Feb;14(2):620-30
- Huang SP, Bao BY, Hour TC, Huang CY, Yu CC, Liu CC, Lee YC, Huang CN, Pao JB, Huang CH. Genetic variants in CASP3, BMP5, and IRS2 genes may influence survival in prostate cancer patients receiving androgen-deprivation therapy. *PLoS One*. 2012;7(7):e41219
- Ibrahim YH, Byron SA, Cui X, Lee AV, Yee D. Progesterone receptor-B regulation of insulin-like growth factor-stimulated cell migration in breast cancer cells via insulin receptor substrate-2. *Mol Cancer Res*. 2008 Sep;6(9):1491-8
- Ibuki N, Ghaffari M, Reuveni H, Pandey M, Fazli L, Azuma H, Gleave ME, Levitzki A, Cox ME. The tyrosinase NT157 suppresses insulin receptor substrates and augments therapeutic response of prostate cancer. *Mol Cancer Ther*. 2014 Dec;13(12):2827-39
- Jackson JG, Zhang X, Yoneda T, Yee D. Regulation of breast cancer cell motility by insulin receptor substrate-2 (IRS-2) in metastatic variants of human breast cancer cell lines. *Oncogene*. 2001 Nov 1;20(50):7318-25
- Johnston JA, Wang LM, Hanson EP, Sun XJ, White MF, Oakes SA, Pierce JH, O'Shea JJ. Interleukins 2, 4, 7, and 15 stimulate tyrosine phosphorylation of insulin receptor substrates 1 and 2 in T cells. Potential role of JAK kinases. *J Biol Chem*. 1995 Dec 1;270(48):28527-30
- Karimi K, Mahmoudi T, Karimi N, Dolatmoradi H, Arkani M, Farahani H, Vahedi M, Parsimehr E, Dabiri R, Nobakht H, Asadi A, Zali MR. Is there an association between variants in candidate insulin pathway genes IGF-1, IGFBP-3, INSR, and IRS2 and risk of colorectal cancer in the Iranian population? *Asian Pac J Cancer Prev*. 2013;14(9):5011-6
- Kim B, Feldman EL. Insulin receptor substrate (IRS)-2, not IRS-1, protects human neuroblastoma cells against apoptosis. *Apoptosis*. 2009 May;14(5):665-73
- Kim B, Leventhal PS, White MF, Feldman EL. Differential regulation of insulin receptor substrate-2 and mitogen-activated protein kinase tyrosine phosphorylation by phosphatidylinositol 3-kinase inhibitors in SH-SY5Y human neuroblastoma cells. *Endocrinology*. 1998 Dec;139(12):4881-9
- Kim B, van Golen CM, Feldman EL. Insulin-like growth factor-I signaling in human neuroblastoma cells. *Oncogene*. 2004 Jan 8;23(1):130-41
- Knobbe CB, Reifemberger G. Genetic alterations and aberrant expression of genes related to the phosphatidylinositol-3'-kinase/protein kinase B (Akt) signal transduction pathway in glioblastomas. *Brain Pathol*. 2003 Oct;13(4):507-18
- Kornmann M, Maruyama H, Bergmann U, Tangvoranuntakul P, Beger HG, White MF, Korc M. Enhanced expression of the insulin receptor substrate-2 docking protein in human pancreatic cancer. *Cancer Res*. 1998 Oct 1;58(19):4250-4
- Liu H, Ren G, Zhu L, Liu X, He X. The upregulation of miRNA-146a inhibited biological behaviors of ESCC through inhibition of IRS2. *Tumour Biol*. 2016 Apr;37(4):4641-7
- Ma Y, Kong Q, Hua H, Luo T, Jiang Y. Aflatoxin B1 up-regulates insulin receptor substrate 2 and stimulates hepatoma cell migration. *PLoS One*. 2012;7(10):e47961
- Machado-Neto JA, Favaro P, Lazarini M, da Silva Santos Duarte A, Archangelo LF, Lorand-Metze I, Costa FF, Saad ST, Traina F. Downregulation of IRS2 in myelodysplastic syndrome: a possible role in impaired hematopoietic cell differentiation. *Leuk Res*. 2012 Jul;36(7):931-5
- Mardilovich K, Shaw LM. Hypoxia regulates insulin receptor substrate-2 expression to promote breast carcinoma cell survival and invasion. *Cancer Res*. 2009 Dec 1;69(23):8894-901
- Miyagi E, Braga-Basaria M, Hardy E, Vasko V, Burman KD, Jhiang S, Saji M, Ringel MD. Chronic expression of RET/PTC 3 enhances basal and insulin-stimulated PI3 kinase/AKT signaling and increases IRS-2 expression in FRTL-5 thyroid cells. *Mol Carcinog*. 2004 Oct;14(2):98-107
- Morelli C, Garofalo C, Bartucci M, Surmacz E. Estrogen receptor-alpha regulates the degradation of insulin receptor substrates 1 and 2 in breast cancer cells. *Oncogene*. 2003 Jun 26;22(26):4007-16

- Nagle JA, Ma Z, Byrne MA, White MF, Shaw LM. Involvement of insulin receptor substrate 2 in mammary tumor metastasis *Mol Cell Biol* 2004 Nov;24(22):9726-35
- Neid M, Datta K, Stephan S, Khanna I, Pal S, Shaw L, White M, Mukhopadhyay D. Role of insulin receptor substrates and protein kinase C-zeta in vascular permeability factor/vascular endothelial growth factor expression in pancreatic cancer cells *J Biol Chem* 2004 Feb 6;279(6):3941-8
- Park DH, Jeon HS, Lee SY, Choi YY, Lee HW, Yoon S, Lee JC, Yoon YS, Kim DS, Na MJ, Kwon SJ, Kim DS, Kang J, Park JY, Son JW. MicroRNA-146a inhibits epithelial mesenchymal transition in non-small cell lung cancer by targeting insulin receptor substrate 2 *Int J Oncol* 2015 Oct;47(4):1545-53
- Patti ME, Sun XJ, Bruening JC, Araki E, Lipes MA, White MF, Kahn CR. 4PS/insulin receptor substrate (IRS)-2 is the alternative substrate of the insulin receptor in IRS-1-deficient mice *J Biol Chem* 1995 Oct 20;270(42):24670-3
- Platanias LC, Uddin S, Yetter A, Sun XJ, White MF. The type I interferon receptor mediates tyrosine phosphorylation of insulin receptor substrate 2 *J Biol Chem* 1996 Jan 5;271(1):278-82
- Porter HA, Perry A, Kingsley C, Tran NL, Keegan AD. IRS1 is highly expressed in localized breast tumors and regulates the sensitivity of breast cancer cells to chemotherapy, while IRS2 is highly expressed in invasive breast tumors *Cancer Lett* 2013 Sep 28;338(2):239-48
- Rashad NM, El-Shal AS, Abd Elbary EH, Abo Warda MH, Hegazy O. Impact of insulin-like growth factor 2, insulin-like growth factor receptor 2, insulin receptor substrate 2 genes polymorphisms on susceptibility and clinicopathological features of hepatocellular carcinoma *Cytokine* 2014 Jul;68(1):50-8
- Reuveni H, Flashner-Abramson E, Steiner L, Makedonski K, Song R, Shir A, Herlyn M, Bar-Eli M, Levitzki A. Therapeutic destruction of insulin receptor substrates for cancer treatment *Cancer Res* 2013 Jul 15;73(14):4383-94
- Saad MJ, Carvalho CR, Thirone AC, Velloso LA. Insulin induces tyrosine phosphorylation of JAK2 in insulin-sensitive tissues of the intact rat *J Biol Chem* 1996 Sep 6;271(36):22100-4
- Saad MJ, Velloso LA, Carvalho CR. Angiotensin II induces tyrosine phosphorylation of insulin receptor substrate 1 and its association with phosphatidylinositol 3-kinase in rat heart *Biochem J* 1995 Sep 15;310 ( Pt 3):741-4
- Sanchez-Lopez E, Flashner-Abramson E, Shalpour S, Zhong Z, Taniguchi K, Levitzki A, Karin M. Targeting colorectal cancer via its microenvironment by inhibiting IGF-1 receptor-insulin receptor substrate and STAT3 signaling *Oncogene* 2016 May 19;35(20):2634-44
- Zhao XM, Chen J, Yang L, Luo X, Xu LL, Liu DX, Zhai SL, Li P, Wang XR. Association between IRS-2 G1057D polymorphism and risk of gastric cancer *World J Gastrointest Oncol* 2012 Jan 15;4(1):9-15
- Savage SL, Eide CA, Concannon KF, Bottomly D, Wilmot B, McVeeney SK, Maxson JE, Tyner JW, Tognon CE and Druker BJ. Activating Mutations of Insulin Receptor Substrate 2 (IRS2) in Patients with Tyrosine Kinase Inhibitor-Refractory Chronic Myeloid Leukemia. *Blood (ASH Annual Meeting Abstracts)* 2015 126 (23): Abstract #2461.
- Shaw CM, Grobmyer SR, Ucar DA, Cance WG, Reith JD, Hochwald SN. Elevated expression of IRS2 in the progression from neurofibroma to malignant peripheral nerve sheath tumor *Anticancer Res* 2012 Feb;32(2):439-43
- Shaw LM. Identification of insulin receptor substrate 1 (IRS-1) and IRS-2 as signaling intermediates in the alpha6beta4 integrin-dependent activation of phosphoinositide 3-OH kinase and promotion of invasion *Mol Cell Biol* 2001 Aug;21(15):5082-93
- Slattery ML, Sweeney C, Wolff R, Herrick J, Baumgartner K, Giuliano A, Byers T. Genetic variation in IGF1, IGFBP3, IRS1, IRS2 and risk of breast cancer in women living in Southwestern United States *Breast Cancer Res Treat* 2007 Aug;104(2):197-209
- Stöhr O, Hahn J, Moll L, Leeser U, Freude S, Bernard C, Schilbach K, Markl A, Udelhoven M, Krone W, Schubert M. Insulin receptor substrate-1 and -2 mediate resistance to glucose-induced caspase-3 activation in human neuroblastoma cells *Biochim Biophys Acta* 2011 May;1812(5):573-80
- Sun XJ, Wang LM, Zhang Y, Yenush L, Myers MG Jr, Glasheen E, Lane WS, Pierce JH, White MF. Role of IRS-2 in insulin and cytokine signalling *Nature* 1995 Sep 14;377(6545):173-7
- Szabolcs M, Keniry M, Simpson L, Reid LJ, Koujak S, Schiff SC, Davidian G, Licata S, Gruvberger-Saal S, Murty VV, Nandula S, Efstratiadis A, Kushner JA, White MF, Parsons R. Irs2 inactivation suppresses tumor progression in Pten+/- mice *Am J Pathol* 2009 Jan;174(1):276-86
- Uddin S, Yenush L, Sun XJ, Sweet ME, White MF, Platanias LC. Interferon-alpha engages the insulin receptor substrate-1 to associate with the phosphatidylinositol 3'-kinase *J Biol Chem* 1995 Jul 7;270(27):15938-41
- Velloso LA, Folli F, Sun XJ, White MF, Saad MJ, Kahn CR. Cross-talk between the insulin and angiotensin signaling systems *Proc Natl Acad Sci U S A* 1996 Oct 29;93(22):12490-5
- Verdier F, Chrétien S, Billat C, Gisselbrecht S, Lacombe C, Mayeux P. Erythropoietin induces the tyrosine phosphorylation of insulin receptor substrate-2. An alternate pathway for erythropoietin-induced phosphatidylinositol 3-kinase activation *J Biol Chem*
- White MF, Kahn CR. The insulin signaling system *J Biol Chem* 1994 Jan 7;269(1):1-4
- Withers DJ, Gutierrez JS, Towery H, Burks DJ, Ren JM, Previs S, Zhang Y, Bernal D, Pons S, Shulman GI, Bonner-Weir S, White MF. Disruption of IRS-2 causes type 2 diabetes in mice *Nature* 1998 Feb 26;391(6670):900-4
- Wu S, Zhou B, Xu L, Sun H. Interaction between nuclear insulin receptor substrate-2 and NF-kB in IGF-1 induces response in breast cancer cells *Oncol Rep* 2010 Dec;24(6):1541-50
- Xu J, Liao X, Lu N, Liu W, Wong CW. Chromatin-modifying drugs induce miRNA-153 expression to suppress Irs-2 in glioblastoma cell lines *Int J Cancer* 2011 Nov 15;129(10):2527-31
- Yamashita S, Tsujino Y, Moriguchi K, Tatematsu M, Ushijima T. Chemical genomic screening for methylation-silenced genes in gastric cancer cell lines using 5-aza-2'-deoxycytidine treatment and oligonucleotide microarray *Cancer Sci* 2006 Jan;97(1):64-71
- Yenush L, White MF. The IRS-signalling system during insulin and cytokine action *Bioessays* 1997 Jun;19(6):491-500



Yukseoglu EH, Celik SK, Kucuk MU, Yalin E, Ozkal SS, Ates C, Berköz M, Yalin S, Ates NA. IRS-2 G1057D polymorphism in Turkish patients with colorectal cancer *Prz Gastroenterol* 2014;9(2):88-92

Zekri AR, Hassan ZK, Bahnassy AA, Khaled HM, El-Rouby MN, Haggag RM, Abu-Taleb FM. Differentially expressed genes in metastatic advanced Egyptian bladder cancer *Asian Pac J Cancer Prev* 2015;16(8):3543-9

Zhang Q, Berggren PO, Hansson A, Tally M. Insulin-like growth factor-I-induced DNA synthesis in insulin-secreting cell line RINm5F is associated with phosphorylation of the insulin-like growth factor-I receptor and the insulin receptor

substrate-2 *J Endocrinol* 1998 Mar;156(3):573-81

Zhang X, Kamaraju S, Hakuno F, Kabuta T, Takahashi S, Sachdev D, Yee D. Motility response to insulin-like growth factor-I (IGF-I) in MCF-7 cells is associated with IRS-2 activation and integrin expression *Breast Cancer Res Treat* 2004 Jan;83(2):161-70

Zhao XM, Chen J, Yang L, Luo X, Xu LL, Liu DX, Zhai SL, Li P, Wang XR. Association between IRS-2 G1057D polymorphism and risk of gastric cancer *World J Gastrointest Oncol* 2012 Jan 15;4(1):9-15

de Melo Campos P, Machado-Neto JA, Eide CA, Savage SL, Scopim-Ribeiro R, da Silva Souza Duarte A, Favaro P, Lorand-Metze I, Costa FF, Tognon CE, Druker BJ, Olalla Saad ST, Traina F. IRS2 silencing increases apoptosis and potentiates the effects of ruxolitinib in JAK2V617F-positive myeloproliferative neoplasms *Oncotarget* 2016 Feb 9;7(6):6948-59

---

*This article should be referenced as such:*

Machado-Neto JA, de Melo Campos P, Traina F. IRS2 (insulin receptor substrate 2). *Atlas Genet Cytogenet Oncol Haematol*. 2017; 21(2):35-43.

---