

The Academic Outcomes of Working Memory and Metacognitive Strategy Training in Children: A Double-Blind Randomised Controlled Trial

Jones, J. S., Milton, F., Mostazir, M., & Adlam, A-L. R.

School of Psychology, College of Life and Environmental Sciences, University of Exeter, Exeter, UK, EX4 4QG.

jj256@exeter.ac.uk; A.R.Adlam@exeter.ac.uk; F.N.Milton@exeter.ac.uk;
M.Mostazir@exeter.ac.uk

Running Title: Working memory and metacognitive training in children

Acknowledgements

This work was supported by an Economic and Social Research Council (ESRC) postgraduate studentship. We would like to thank all the children who participated in the study and the parents, teachers, and school staff who supported it. We would also like to thank the research team that assisted with data collection and coaching: Lucy Dixon, Olivia Muir, Sophie Stadie, Lily Hopkins, Charlie Gosling, Emma Brooke, and Barbara Leitner. Finally, thank you to Pearson for allowing us to access the Cogmed training programme for the purposes of this research. The ESRC and Pearson had no involvement in the design, conduct, analysis, or reporting of this trial. The authors declare that there are no conflicts of interest.

Keywords

Working memory training; metacognitive strategy; working memory; mathematics; reading; children

Word count: 7719

Research Highlights

- Ninety-five children were randomly allocated to receive working memory training, working memory and metacognitive strategy training, or adaptive visual search training (control group) after-school
- Working memory performance significantly improved in both training groups relative to the adaptive control group and was maintained three months later
- Improvements in maths were also observed immediately after training, suggesting that working memory training may improve children's academic outcomes when provided in addition to school
- The addition of metacognitive strategy training was associated with greater improvements in working memory performance at three months compared to working memory training alone

Abstract

Working memory training has been shown to improve performance on untrained working memory tasks in typically developing children, at least when compared to non-adaptive training; however, there is little evidence that it improves academic outcomes. The lack of transfer to academic outcomes may be because children are only learning skills and strategies in a very narrow context, which they are unable to apply to other tasks. Metacognitive strategy interventions, which promote metacognitive awareness and teach children general strategies that can be used on a variety of tasks, may be a crucial missing link in this regard. In this double-blind randomised controlled trial, 95 typically developing children aged 9-14 years were allocated to three cognitive training programmes that were conducted daily after-school. One group received Cogmed working memory training, another group received concurrent Cogmed and metacognitive strategy training, and the control group received adaptive visual search training, which better controls for expectancy and motivation than non-adaptive training. Children were assessed on four working memory tasks, reading comprehension, and mathematical reasoning before, immediately after, and three months after training. Working memory training improved working memory and mathematical reasoning relative to the control group. The improvements in working memory were maintained three months later and these were significantly greater for the group that received metacognitive strategy training, compared to working memory training alone. Working memory training is a potentially effective educational intervention when provided in addition to school; however, future research will need to investigate ways to maintain academic improvements long-term and to optimise metacognitive strategy training to promote far-transfer.

Introduction

Working memory is a promising target for cognitive training because it is related to a wide range of cognitive functions (Barrett, Tugade, & Engle, 2004). It is a system for retaining and manipulating information over a few seconds (Baddeley & Hitch, 1994), which is involved in reading (Daneman & Carpenter, 1980), mathematics (Peng et al., 2015), and reasoning (Kane et al., 2004). Furthermore, studies have shown that working memory capacity predicts children's academic achievement (Alloway & Alloway, 2010; Gathercole, Pickering, Knight, & Stegmann, 2004), and those that leave school with better qualifications have higher rates of employment and income (Office for National Statistics, 2013). Thus, if working memory capacity can be increased through training, it could have far-reaching impact by improving children's cognitive abilities, academic achievement, and future life outcomes.

Working memory training programmes, such as Cogmed (Klingberg et al., 2005), n-back and dual n-back training (Jaeggi et al., 2010; Jaeggi, Buschkuhl, Jonides, & Perrig, 2008), simple- and complex-span training (Harrison et al., 2013), and binding training (De Simoni & von Bastian, 2018), typically involve intensive and prolonged practice on one or multiple tasks that adapt in difficulty. A recent meta-analysis of these programmes in typically developing children (including 26 studies and 1601 children aged 3-16 years) showed significant improvements on untrained working memory tasks, i.e. near-transfer, which were maintained three to six months later (Sala & Gobet, 2017). Regarding far-transfer to other domains, significant immediate improvements were reported for mathematics, but not reading, science, fluid intelligence, crystallised intelligence, or cognitive control. However, interpretation of these findings is limited because the analyses included studies with passive, i.e. no intervention, control groups (e.g. Witt, 2011), which do not control for possible placebo, Hawthorne, or demand effects (Shipstead, Redick, & Engle, 2010) or non-specific effects of the training on children's motivation and attentional capacity (Shipstead, Hicks, & Engle, 2012). In order to make strong inferences regarding the effectiveness of working memory training it is, therefore, essential that an active control group is employed that will engage children in some form of training, which is similar in terms of expectancy, motivation, and demands on sustained attention.

When only considering studies with active control groups, Sala and Gobet's (2017) meta-analysis revealed a significant near-transfer effect in the short-term and no evidence of far-transfer effects. No such analysis was performed for long-term near-transfer due to a paucity of studies, which have currently provided mixed evidence (Henry, Messer, & Nash, 2014; Hitchcock & Westwell, 2017; Karbach, Strobach, & Schubert, 2015; Studer-Luethi, Bauer, & Perrig, 2016). Another meta-analysis showed that working memory training may improve self- or parent-reported inattention symptoms (Spencer-Smith & Klingberg, 2015). In typically developing children, training has been found to improve maths ability compared to education as usual (St Clair-Thompson et al., 2010; Witt, 2011), but not when compared to an active control (Henry et al., 2014). Similarly, Cogmed has been associated with improvements in maths and reading in typically developing children when compared to education as usual (Söderqvist & Bergman-Nutley, 2015). However, the only randomised controlled trial of Cogmed in typically developing children to date found no evidence of far-transfer to mathematics or reading comprehension compared to non-adaptive Cogmed, where the difficulty of training remained at a low level (Hitchcock & Westwell, 2017). Overall,

these findings suggest that training can improve working memory; however, it is unclear if these effects are maintained long-term and there is little evidence of far-transfer to other domains, when expectancy and motivation are appropriately controlled for.

One possible reason for the lack of far-transfer effects in studies with active control groups may be because working memory training primarily promotes the acquisition of highly task-specific strategies (Dunning & Holmes, 2014; Randall & Tyldesley, 2016). For example, Cogmed has been shown to increase the use of grouping strategies and performance on near-transfer tasks that are structurally similar to the training tasks (Dunning & Holmes, 2014), but not on structurally different tasks such as the n-back (Ang, Lee, Cheam, Poon, & Koh, 2015). Far-transfer may be limited because working memory strategies do not afford performance on other tasks, such as reading comprehension (Bailey, Dunlosky, & Kane, 2008; Dunlosky & Kane, 2007) or reasoning (Bailey, Dunlosky, & Kane, 2011; Dunlosky & Kane, 2007).

Alternatively, working memory training may primarily increase capacity (Klingberg, 2010; Lövdén et al., 2010), but children may be unable to intuitively apply this to other cognitive or academic tasks. One theory suggests that high working memory capacity affords the production and implementation of effortful and effective strategies on cognitively demanding tasks (Dunlosky & Kane, 2007). However, children may require specific instruction and guidance on how to apply their newly acquired additional capacity in other situations (Partanen, Jansson, Lisspers, & Sundin, 2015), particularly as children's ability to generate and utilise strategies is still developing (Bjorklund, Dukes, & Brown, 2008). Far-transfer may depend upon metacognition to mindfully abstract something learnt in one context and apply it to a new context (Salomon & Perkins, 1989). Self-regulated learning is thought to be achieved through planning, monitoring, and evaluating (Pintrich, 2000; Zimmerman, 2002), and these domain-general strategies are typically taught in metacognitive strategy interventions (Fisher, 1998), which are recommended as one of the most impactful educational interventions (Higgins et al., 2016). Such interventions have been shown to improve children's academic performance (Dignath & Büttner, 2008) and generalise to attainment in untrained school subjects, compared to education as usual (Adey & Shayer, 1993). Concurrent working memory and metacognitive training may, therefore, facilitate children's performance across a range of tasks by increasing cognitive capacity, metacognitive awareness, and utilisation of general strategies.

The academic outcomes of Cogmed with metacognitive strategy training have previously been investigated in children with special educational needs, in comparison to Cogmed alone and education as usual (Partanen et al., 2015). Metacognitive strategy training was provided in three additional sessions each week that focused on labelling elements of the training tasks, formulating goals, identifying strategies and pitfalls, sharing planning and execution strategies, and relating the training tasks to school or leisure time. Cogmed and metacognitive strategy training was found to improve visuospatial working memory, which was maintained six months later; but this was only in comparison to education as usual and there was no evidence of far-transfer to mental arithmetic, reading comprehension, writing, or nonverbal reasoning. No improvements were observed in the group that received Cogmed alone, which led to the suggestion that training children's metacognitive skills and strategies might be an important prerequisite for transfer in children with special educational needs. However, this effect was confounded by the additional contact time that the metacognitive

group received and, as discussed earlier, improvements relative to a passive control group should be treated with caution.

The academic outcomes of working memory and metacognitive strategy training in typically developing children have been more promising, but only one study has been conducted to date (Carretti, Caldarola, Tencati, & Cornoldi, 2014). Children practised on three working memory tasks of increasing difficulty and were taught metacognitive strategies in the context of reading comprehension in 22 biweekly sessions, each lasting one hour. Specifically, children were taught how to identify goals, monitor their comprehension, and predict the content of the reading based on the genre. In addition, children were taught reading strategies and how to integrate information between texts and pictures. Compared to controls who practised reading comprehension exercises for the same amount of time, the intervention was found to significantly improve working memory and reading comprehension. This suggests that concurrent working memory and metacognitive training may improve academic outcomes. However, it is unclear whether the improvement in reading comprehension was an effect of working memory training, metacognitive strategy training, instruction in specific reading strategies, training in integration skills, or a combination of these. There is extensive evidence that instruction in reading strategies improves children's comprehension (Higgins et al., 2016); however, it is unlikely that these benefits would generalise further (Lustig, Shah, Seidler, & Reuter-Lorenz, 2009). It is, therefore, important to determine the specific effects of metacognitive strategy training in addition to working memory training, as this may be crucial to promote far-transfer to academic outcomes.

Adaptive Control Groups

As mentioned previously, a common discussion in the cognitive training literature concerns what constitutes an appropriate control group (Simons et al., 2016). Although most recent studies have used active rather than passive control groups, the vast majority have used a non-adaptive variant of the training programme, where the difficulty remains at a low level and users receive no feedback. This may not sufficiently control for expectancy and motivation because users receiving adaptive training are constantly challenged and receive feedback on their improvements, which may bias their performance at outcome (Shipstead et al., 2012). Many recent reviews have consequently recommended using an adaptive control group that effectively trains a capacity unrelated to working memory (Boot, Simons, Stothart, & Stutts, 2013; Green, Strobach, & Schubert, 2014; Noack, Lovden, & Schmiedek, 2014; Shipstead et al., 2012; Simons et al., 2016). Individuals in an adaptive control group should be challenged, see improvements during training, and, therefore, have similar expectancy and motivation at assessment.

Only one published investigation of working memory training in children has used an adaptive control group (Jaeggi, Buschkuhl, Jonides, & Shah, 2011). The control group received adaptive knowledge training, which involved answering questions in a multiple-choice quiz format. Each training session consisted of 10 one minute blocks that adapted in difficulty by presenting more difficult questions when there were fewer than four errors and easier questions when there were four or more errors. Furthermore, new or previously

incorrectly answered questions were presented at each session. Only children who made large improvements on the n-back training task showed improvements in fluid intelligence relative to the control group. Whilst these results are intriguing, there was no direct measure of working memory performance or far-transfer to academic outcomes. Furthermore, the difficulty of questions was somewhat subjective and the training did not place demands on visuospatial attention, which is typically controlled for in non-adaptive training (Klingberg et al., 2005). Adaptive visual search training has been used as a control group in multiple working memory training studies in adults (Covey, Shucard, & Shucard, 2019; Harrison et al., 2013; Redick et al., 2013) but not yet in children. This approach may be a more suitable control for the visuospatial and attentional demands of working memory training in children. In addition, the difficulty of the task adapts in a more objective manner, by increasing or decreasing the number of distracters in the search array according to performance.

The Present Study

In summary, whilst there is some suggestive evidence that working memory training can improve children's working memory performance, the limitations of the control tasks used in most of these studies mean that such a conclusion needs to be taken with caution. Furthermore, there is currently very little evidence indicating that working memory training, on its own, can improve children's academic outcomes. Our review of the literature has indicated that there is not only a clear need for more developmental studies utilising effective adaptive control tasks, but also that a priority should be to explore whether combining working memory training with other training methods is more effective than working memory training alone. For this latter issue, there appear to be compelling theoretical reasons why metacognitive training may facilitate far-transfer of working memory training and there is some preliminary support from a single study that this is indeed the case (Carretti et al., 2014). However, whilst Carretti et al.'s study makes a valuable contribution to the field, the inferences that can be made about what is driving their observed effect are limited. Further investigation is necessary to determine whether there is a sound scientific basis for the widespread use of working memory training regimes within schools and at home. The present study aims to provide an important next step in addressing these outstanding issues, the resolution of which would not only have important theoretical implications but could also have a substantial beneficial impact on future educational training programmes.

To this end, the present study aimed to: i) investigate the immediate and three month outcomes of working memory training in typically developing children when compared to an adaptive control group; and ii) investigate whether combined working memory and metacognitive strategy training facilitates far-transfer to academic outcomes compared to working memory training alone and an adaptive control group. To address these aims, a double-blind randomised controlled trial was conducted with typically developing children (aged 9-14 years) who were randomly assigned to receive either Cogmed, Cogmed and metacognitive strategy training ('MetaCogmed'), or adaptive visual search training (Control). The primary outcomes were average performance on four working memory tasks, mathematical reasoning, and reading comprehension. We also examined the extent of near-

transfer to the individual working memory tasks in consideration of the similarities and differences to the Cogmed training tasks.

Cogmed was selected as a suitable working memory training programme because it is widely used and has been associated with large near-transfer effects in typically developing children (Astle, Barnes, Baker, Colclough, & Woolrich, 2015) and across populations (Melby-Lervåg & Hulme, 2013). We note that Cogmed includes training on both short-term memory and working memory tasks, i.e. tasks that just require storage and tasks that require processing and storage. Accordingly, we measured near-transfer to short-term and working memory tasks. For the purposes of this investigation we treat short-term memory as a facet of working memory, as is the case in some models (Baddeley & Hitch, 1974). The MetaCogmed group received the standard Cogmed protocol combined with a novel metacognitive strategy workbook developed from the education literature (Fisher, 1998). The workbook taught children how to plan, monitor, and evaluate whilst completing the Cogmed training tasks, reading comprehension exercises, and word-based maths problems. Children in the other two training groups received placebo workbooks without the metacognitive content. All training was provided after-school, as previous evidence indicates that training in lieu of school lessons is detrimental to long-term academic outcomes (Roberts et al., 2016). A three month follow-up was included to examine long-term academic outcomes and whether near-transfer effects are maintained, as previous studies have provided mixed evidence of long-term near-transfer.

Method

Participants

Initially, 142 parents/guardians expressed interest in their children taking part in the study. After exclusions and withdrawals of interest (see Figure 1 for participant flow), 95 typically developing children aged 9-14 years ($M = 12.51$, $SD = 1.18$) were recruited from four public schools in Devon, England between September 2016 and June 2017. The sample included 45 girls (47.4%) and 50 boys (52.6%), who were primarily white British. Seven children were recruited from one primary school and 88 children from three secondary schools. Children were excluded if they had a diagnosis of a developmental disorder, acquired brain injury, or uncorrected visual, hearing, or motor impairment that might hinder their engagement with the training. All participating children provided written assent and their parent/guardian provided written consent. The study was approved by the University of Exeter Ethics Committee (Ref: 2016/1288).

Design

This study utilised a double-blind randomised controlled trial where the intervention and data collection were conducted in participating schools. Participants in each school were randomly allocated 1:1:1 to three training conditions: Cogmed, MetaCogmed, and Control. Randomisation was completed by researchers who were not involved in conducting outcome

assessments at that particular school. Numbers were randomly generated on a computer and repeated until group sizes were equal or differed by one.

Procedure

Children and parents/guardians were informed that the aim of the study was to compare two computerised cognitive training programmes and two workbooks, which would be randomly assigned to participating children. The MetaCogmed and Cogmed groups completed the Cogmed RoboMemo programme (see <https://www.cogmed.com/rm> for full details) and the Control group received adaptive visual search training. In addition, the MetaCogmed group received a metacognitive workbook and the Cogmed and Control groups received a placebo workbook. All materials and data are publicly available at <https://osf.io/kxyf3/>. The training was conducted as an afterschool club, where children trained together in one of the school's computer rooms for approximately one hour following the end of the normal school day. The afterschool club ran every day for six to seven weeks, and all training groups were instructed to complete 20-25 training sessions in that time, in accordance with the Cogmed protocol. The sessions were supervised by one to three members of the research team who were certified Cogmed coaches. The coaches provided technical support, clarification, and encouragement to all participating children who otherwise trained independently. Parents and guardians were contacted weekly with updates on their child's progress and any difficulties with their child's compliance to the training protocol were discussed. Children were rewarded with a £1 Amazon voucher or item of stationery every time they completed four training sessions, and a £15 Amazon voucher when they completed 20 training sessions. At the end of the study, children who were assigned to the control group were offered a free license to use Cogmed in their own time.

Standardised assessments were administered by trained researchers who were unaware of children's group assignment. Baseline assessments of working memory, IQ, reading comprehension, and mathematical reasoning were conducted at each school 0-21 days before training ($M = 7.59$, $SD = 5.41$). Children were reassessed on the working memory, reading comprehension, and mathematical reasoning tasks 1-17 days after completing the training programme ($M = 3.87$, $SD = 3.63$) and again at least three months later ($M = 14.42$ weeks after training, $SD = 1.06$).

Cogmed Working Memory Training

Cogmed RoboMemo included a battery of 11 short-term and working memory tasks with visuospatial and verbal stimuli (Klingberg et al., 2005). The tasks required recalling a sequence of spatial locations in order, tracking and recalling a sequence of moving spatial locations or objects, reordering and recalling a sequence of spatial locations, recalling a sequence of digits in reverse order, and recognising a sequence of letters. Each session lasted approximately 45 minutes with breaks and involved training on eight tasks for approximately 15 trials each. The difficulty of the training tasks adapted on a trial-by-trial basis according to

the individual's performance. The complexity of the stimulus sequence or the number of items to remember would increase following successful responses, whereas they would decrease following incorrect responses. To control for time spent training, the number of trials adapted to an individual's processing time and current span level, where fewer trials were presented for children training at a higher span and more trials were presented for children training at a lower span. Cogmed included a difficulty level meter, high scores, audio and verbal feedback, and a reward game 'Robo Racing'. At the end of each session performance was converted into lives that children could use to play Robo Racing for a few minutes, depending on how many lives they had accrued during training. Children used the arrow keys to move a robot left, right, and up in the air to collect stars and race against the clock.

Adaptive visual search training

Adaptive visual search training has recently been shown to be an excellent control for subjective expectations and is unlikely to produce transfer effects because performance is only very weakly correlated with working memory and other executive functions (De Simoni & von Bastian, 2018). We developed an adaptive visual search training programme in OpenSesame 3.1 (Mathôt, Schreij, & Theeuwes, 2012) called 'Codebreak', which was based on a previous paradigm (Redick et al., 2013). A narrative, colour scheme, motivational feedback, and high scores were added to make this more engaging for children. The training involved adaptive practice on a visual search task where each session consisted of 24 blocks of 24 trials, lasting approximately 45 minutes with breaks. Children searched for the target letter 'F' amongst an array of distracter letters which consisted of 'E's or 't's. The letters could either face to the right, as normal, or to the left, as mirror images. Each trial began with a fixation dot presented for 500ms, followed by an array for 500ms, and then a mask for 2500ms. Children had to report the orientation of the target by pressing the right arrow when the 'F' was facing to the right, or left arrow when it was facing to the left. Feedback was given on each trial in the form of a tone presented for 200ms; a high tone indicated a correct response and a low tone indicated an incorrect response. If no response was made during the presentation of the array or mask the trial was considered incorrect.

Similar to Cogmed, the visual search training adapted in difficulty and provided feedback on performance. The search array began at 2x2 and adapted at the end of each block. If accuracy was greater than 87.5% the difficulty was increased by adding a row or column to the array, if accuracy was between 75% and 87.5% the difficulty remained the same, and if accuracy was less than 75% the difficulty was reduced by removing a row or column from the array. A difficulty level of one indicated a 2x1 array, a difficulty level of two indicated a 2x2 array, a difficulty level of three indicated a 3x2 array, and so on. Verbal and audio feedback was provided at the end of each block and each session. As in Cogmed, children would start a new session at the same difficulty level they had ended on in the previous session.

Metacognitive workbook

The metacognitive workbook trained children on three strategies: planning, monitoring, and evaluating, which are commonly used in educational interventions (Fisher, 1998). Children first completed three reflection exercises, which encouraged them to think about their thinking as they completed a Cogmed training task, a reading comprehension exercise, and a word-based maths problem. They were then introduced to planning, monitoring, evaluating, and specific metacognitive strategies that serve to self-motivate and refocus. The motivation and focus strategies were adopted from paediatric neurorehabilitation programmes that combine training of attention and memory with instruction in metacognitive strategies (Butler & Copeland, 2002; Sohlberg, Harn, MacPherson, & Wade, 2014). Whilst completing the Cogmed training tasks, reading comprehension exercises, and word-based maths problems, questions prompted children to plan before starting the task, reminded them to monitor their thoughts during the task, and required them to evaluate their thinking after the task (see Supplementary File). The questions particularly focused on the goal of the task itself, generation of task-specific strategies which might aid performance, steps needed to complete the task, and strategies to improve motivation and focus. As children progressed through the workbook, the questions were replaced with prompts to encourage children to remember how to plan, monitor, and evaluate. Children were not instructed to use any task-specific mnemonic, reading, mathematical, or problem-solving strategies, but were instead encouraged to generate and implement their own cognitive strategies. In addition, the children wrote down how to use, when to use, and why to use these strategies in their 'Personal Strategy Guide' (Schraw, 1998), which was available throughout training.

Children in the Cogmed and Codebreak groups received a placebo workbook, which was designed to have face-validity and to hold children's attention for a similar amount of time to the metacognitive workbook. In place of the metacognitive content, the placebo workbook contained word searches that were related to the readings, number searches linked to the maths problems, and questions pertaining to the acceptability of the training (see Supplementary File).

The metacognitive and placebo workbooks consisted of written information, illustrations, and exercises, including six reading comprehension exercises and six word-based maths problems. The workbooks were divided into 25 sections that each took 10-15 minutes to complete. Children independently completed one section after each session of their computerised training. The coaches checked the workbooks during and after each session to ensure that children had completed the appropriate section and in sufficient detail. To ensure that the language and difficulty of the exercises were age-appropriate, two versions of the workbooks were developed. One was designed for primary school children aged 9-11 years and the other for secondary school children aged 11-14 years.

Measures

IQ was assessed to characterise the sample at baseline using the two sub-tests version (FSIQ-2) of the Wechsler Abbreviated Scale of Intelligence-II (WASI-II; Wechsler, 2011). This includes a measure of crystallised intelligence (Vocabulary) and a measure of fluid intelligence (Matrix Reasoning). The FSIQ-2 has excellent internal consistency ($\alpha = 0.93$), test-retest reliability ($r = 0.87-95$), and interrater reliability (McCrimmon & Smith, 2013).

Working memory was assessed at baseline, immediate outcome, and the three month outcome using four tasks from the Automated Working Memory Assessment (Alloway, 2007). Children were required to recall sequences of numbers in forwards (Digit Recall) and reverse order (Backwards Digit Recall), spatial locations on a 4x4 grid (Dot Matrix), and spatial locations at three points of a triangle whilst performing a secondary task, which required children to mentally rotate an object to identify whether it was the same or mirror image of another object (Spatial Span). These measures have good test-retest reliability ($r = 0.64-84$) in children (Alloway, Gathercole, & Pickering, 2006). There is high agreement between simple and backward/complex span tasks in children ($r = 0.85$ Alloway et al., 2006), suggesting that they measure the same underlying sub-processes (see Unsworth & Engle, 2007). Therefore, performance on the four AWMA tasks was averaged to form a composite score of overall working memory ability, as in previous studies (Astle et al., 2015). The extent of near-transfer to the individual tasks was also investigated in relation to its similarity with the training tasks, but these findings should be treated with some caution due to the larger number of comparisons. Greater transfer was expected on the Dot Matrix and Backwards Digit Recall tasks because they had similar structure and material to the Visual Data Link and Input Module training tasks, whereas the forwards Digit Recall and Spatial Span differed to the training tasks.

Academic achievement was assessed at baseline, immediate outcome, and the three month outcome using the Reading Comprehension and Mathematical Reasoning subtests from the Wechsler Individual Achievement Test-II (Wechsler, 2005). The Reading Comprehension subtest includes questions that examine comprehension of written passages and sentences. It has excellent internal consistency for ages 9-14 ($r = 0.94-96$), excellent test-retest reliability ($r = 0.93$), and has reasonable convergent validity with other measures of reading achievement ($r = 0.45-70$). All responses were scored by the principal investigator (J.J.) to reduce subjective variability. The Mathematical Reasoning subtest predominantly includes single and multi-step word problems relating to whole numbers, fractions or decimals, interpreting graphs, identifying patterns, rotating shapes, and probability. It has excellent internal consistency for ages 9-14 ($r = 0.92-95$), excellent test-retest reliability ($r = 0.94$), and good convergent validity with other measures of Maths achievement ($r = 0.59-67$).

Data Analyses

We analysed whether MetaCogmed and Cogmed significantly improved working memory, mathematical reasoning, and reading comprehension relative to the Control group, and whether the MetaCogmed group improved significantly more relative to the Cogmed group. All analyses were intention-to-treat (ITT) based, treating missing data as missing at least at random assumption. Baseline score adjusted Analysis of Covariance (ANCOVA) models were developed to compare group differences at the immediate and three month outcomes. Further, multi-level mixed models were developed to examine group differences in the time related change from baseline to immediate outcome and baseline to three month outcome. The ANCOVA models included data on a complete case basis, whereas the mixed models also included data from participants with missing outcome data. The results of both analyses are reported for consistency. The ANCOVA results were preferred for the immediate effects because it is a common and recommended analysis method in randomised controlled trials with two time points (Van Breukelen, 2006). The mixed model results were preferred for the time related change at three months, where the additional follow-up measurements added more power to the analyses compared to ANCOVA (Guo, Logan, Glueck, & Muller, 2013). All analyses were carried out using Stata statistical analytical software (StataCorp, 2017).

Results

Baseline Characteristics

Baseline data were collected for all participants at the point of randomisation ($N = 95$). The number of data points (N), means, standard deviations (SD), and group differences (Δ) with 95% confidence intervals (CI) are presented for all variables in Table 1. Between-group differences were analysed using t-tests for all continuous variables and chi-square tests for gender. There were no significant differences across the three groups (all $p > 0.05$), suggesting that the randomisation was effective. The only exception was for IQ, which was higher for the MetaCogmed group compared to the control group at borderline significance ($p = 0.044$). However, controlling for this factor did not significantly contribute to the regression models and, therefore, it was not added to the model results presented in the following sections.

Training Adherence

Across the whole sample of 95 children, there were no significant differences (all $p > 0.05$) in the number of training sessions completed by the MetaCogmed ($M = 17.8$, $SD = 5.42$), Cogmed ($M = 16.03$, $SD = 6.98$), or Control groups ($M = 18.15$, $SD = 5.83$). Eighteen children withdrew during training and no further data were collected at the immediate or three month outcomes. This included three children from the Control group, six from the MetaCogmed group, and nine from the Cogmed group. Drop-out did not significantly differ

across the groups, $\chi^2(2, N = 95) = 3.49, p = 0.175$. A total of 77 children completed the training programme: 28 children in the Control group, 26 in the MetaCogmed group, and 23 in the Cogmed group (see Figure 1 for flow diagram). Outcome data were collected for all 77 children at the immediate and three month assessments. The majority of these children completed at least 20 training sessions (90.9%, $M = 20.03, SD = 0.76$) within six weeks (92.2%, $M = 4.99, SD = 0.68$) and there were no significant group differences in the number of training sessions completed (all $p > 0.05$): MetaCogmed ($M = 20.12, SD = 0.91$), Cogmed ($M = 19.96, SD = 0.21$), and Control ($M = 20, SD = 0.9$).

Immediate Outcomes

The results of the ANCOVAs, baseline adjusted group means, 95% *CI*s, and mean differences (Δ) at the immediate and three month outcome are presented in Table 2. The adjusted means and *CI*s for each group are plotted in Figure 2. Compared to the Control group, scores on the AWMA were significantly higher in the MetaCogmed ($p < 0.001$) and Cogmed groups ($p < 0.001$) at the immediate outcome. Average scores on Mathematical Reasoning were higher for the MetaCogmed and Cogmed groups compared to the Control group at immediate outcome. This difference was statistically significant for the Cogmed group ($p = 0.019$) and borderline significant for the MetaCogmed group ($p = 0.059$). There were no significant group differences in Reading Comprehension at the immediate outcome (all $p > 0.05$). The multi-level models produced very similar results (see Table 3 and Figure 3); although, the effect of Cogmed on Mathematical Reasoning was borderline significant ($p = 0.068$).

To investigate possible mechanisms of working memory training, the extent of near-transfer was examined by comparing performance on the individual working memory tasks between the groups. If children only learn highly specific skills and strategies, then Cogmed may only improve performance on the Dot Matrix and Backwards Digit Recall tasks, which are structurally similar to the training tasks. The results of the ANCOVAs, baseline adjusted group means, 95% *CI*s, and mean differences (Δ) are presented in Table 4. At the immediate outcome, the MetaCogmed group had significantly higher scores on the Dot Matrix ($p = 0.009$), Digit Recall ($p = 0.001$), Backwards Digit Recall ($p < 0.001$), and Spatial Span tasks ($p = 0.006$) compared to the Control group. Similarly, the Cogmed group had significantly higher scores on the Dot Matrix ($p = 0.001$), Digit Recall ($p < 0.001$), and Backwards Digit Recall tasks ($p = 0.001$), but not the Spatial Span task ($p = 0.682$) compared to the Control group. The MetaCogmed group also performed significantly higher on the Spatial Span task compared to the Cogmed group at the immediate outcome ($p = 0.027$). The multi-level models produced very similar results (see Table 5); although performance on the Spatial Span task did not significantly differ between the MetaCogmed and Cogmed groups ($p = 0.103$).

Three Month Outcomes

Random intercept models were developed for each of the outcome variables to account for the variance due to repeated measures. The log likelihood ratio (LR) tests revealed that all models were highly significant compared to a single level model (Working Memory: $\chi^2 = 83.34, p < 0.001$; Maths: $\chi^2 = 131.12, p < 0.001$; Reading: $\chi^2 = 91.03, p < 0.001$), indicating a substantial amount of variance attributable at the individual/upper level. The resulting coefficients and 95% confidence intervals from the random intercept models are presented in Table 3. The estimated means and CIs for each group are plotted in Figure 3.

The mixed models indicated that scores on the AWMA increased significantly more in the MetaCogmed ($p < 0.001$) and Cogmed groups ($p = 0.040$) compared to the Control group at the three month outcome. Furthermore, improvements on the AWMA were significantly greater in the MetaCogmed group compared to the Cogmed group at the three month outcome ($p = 0.030$). Relative to the Control group, there was no significant improvement in Maths scores for the MetaCogmed ($p = 0.285$) or Cogmed groups ($p = 0.340$) at the three month outcome. Similarly, there was no significant improvement in Reading scores for the MetaCogmed ($p = 0.488$) or Cogmed groups ($p = 0.188$) compared to the Control group at the three month outcome. The ANCOVAs produced very similar results (see Table 2 and Figure 2); although, the greater improvement in working memory performance in the MetaCogmed group compared to the Cogmed group was borderline significant ($p = 0.06$).

Concerning the extent of near-transfer at three months, the coefficients and CIs from the mixed models are presented for each task in Table 5. At the three month outcome, MetaCogmed significantly improved performance on the Digit Recall task compared to the Control group ($p = 0.002$) and on the Backwards Digit Recall task compared to the Control ($p < 0.001$) and Cogmed groups ($p < 0.001$). Cogmed only significantly improved performance on the Digit Recall task compared to the Control group ($p = 0.045$). The ANCOVAs confirmed these findings and revealed two additional effects that were borderline significant (see Table 4). This included the difference between the MetaCogmed and Control groups on the Spatial Span task ($p = 0.055$) and the difference between the Cogmed and Control groups on the Backwards Digit Recall task ($p = 0.063$).

Discussion

We examined whether working memory training (Cogmed) and a novel combination of working memory and metacognitive strategy training (MetaCogmed) improved children's working memory and academic outcomes immediately and three months after training, relative to an adaptive control group. Overall, the results suggested that both interventions improved working memory performance at the immediate and three month outcome. Furthermore, near-transfer was greater in the MetaCogmed group compared to the Cogmed group at the three month outcome. Regarding far-transfer, both interventions improved mathematical reasoning relative to the control group, but this was only statistically significant for the Cogmed group and was not maintained at the three month outcome. Neither

intervention improved reading comprehension relative to the control group at either time point. Finally, there were no differences in mathematical reasoning or reading comprehension between the two working memory training groups. We discuss each of the main findings in turn.

Near Transfer

The present study was the first to investigate and find near-transfer from working memory training in children relative to an adaptive control group. For both the Cogmed and MetaCogmed groups this improvement in working memory performance was observed not only at the immediate outcome but also at the three month outcome, which indicates that the effect of working memory training can be long-lasting. These findings extend upon previous developmental working memory training studies that have reported near-transfer effects in comparison to a non-adaptive or other active control group (Astle et al., 2015; Henry et al., 2014; Roberts et al., 2016), which may have been confounded by effects on expectancy and motivation (Shipstead et al., 2012). Furthermore, our results are broadly consistent with adult working memory training studies that have reported near-transfer when compared to adaptive visual search training (Covey et al., 2019; Harrison et al., 2013) and adaptive general knowledge training (Anguera et al., 2012). The repeated and demanding activation of working memory at current capacity limits during training may have induced neuroplastic changes, affording increased capacity, and/or led to the development of task-specific strategies, automatization of basic processes, and chunk learning that make more efficient use of capacity (Lövdén et al., 2010; von Bastian & Oberauer, 2014). These processes are not necessarily mutually exclusive and an important avenue for future research will be to determine to what extent training-related improvements in working memory reflect increases in capacity, which may be more likely to support far-transfer (Lövdén et al., 2010).

We examined the extent and mechanisms of near-transfer by analysing whether performance gains on the individual working memory tasks differed between the groups. As expected, Cogmed and MetaCogmed significantly improved performance on the Dot Matrix and Backwards Digit Recall tasks. These tasks are similar to multiple Cogmed training tasks and, therefore, may have afforded the same strategies (Dunning & Holmes, 2014). Cogmed and MetaCogmed also improved performance on the forwards Digit Recall task, showing generalisation to a different task. Finally, compared to both the Control and Cogmed groups, only MetaCogmed improved performance on the Spatial Span task, which was the least similar to the Cogmed training tasks. These findings broadly correspond with recent meta-analyses that have shown large or moderate near-transfer on tasks that are very similar to the training and small, but significant, effects on less similar tasks (Aksayli, Sala, & Gobet, 2018; Melby-Lervåg, Redick, & Hulme, 2016; Soveri, Antfolk, Karlsson, Salo, & Laine, 2017). Near-transfer may depend on whether the training and transfer tasks share the same high-order cognitive routine (Gathercole, Dunning, Holmes, & Norris, 2019); however, the contribution of improvements in capacity or more general cognitive resources is still a matter of debate (von Bastian & Oberauer, 2014).

Far Transfer

To our knowledge, this is the first evidence that working memory training improves children's maths ability in the short-term, compared to an active control group. This was statistically significant for the Cogmed group and borderline significant for the MetaCogmed group. Short-term improvement in maths has previously been reported in a meta-analysis of 11 working memory training studies in typically developing children (Sala & Gobet, 2017). However, this effect was not significant for the meta-analysis of the six studies that used active control groups. This may be because expectancy and motivation were better controlled for, but it may reflect a lack of power due to the limited number of studies and the use of maths training as a control in two studies (Kuhn & Holling, 2014; Passolunghi & Costa, 2016). The only previous randomised controlled trial of Cogmed in typically developing children reported no improvement on a mixed assessment of maths ability (Hitchcock & Westwell, 2017). Although somewhat contrary to our findings, it may be possible that working memory training particularly improves mathematical reasoning, as a previous study showed specific improvements in word-problem solving (Kuhn & Holling, 2014), which is more strongly associated with working memory capacity than other maths abilities (Peng et al., 2015). It is also important to acknowledge that training was provided in addition to school, as previous evidence indicates that replacing school lessons with working memory training leads to worse maths outcomes in the long-term (Roberts et al., 2016).

Whilst our finding of far transfer to maths is promising and noteworthy, this effect was not maintained at the three month outcome. This immediate effect may indicate that working memory training directly improved children's mathematical reasoning ability, rather than their capacity to learn and maths attainment, which would be more evident long-term (Söderqvist & Bergman-Nutley, 2015). Clearly for any intervention to be of important educational impact it is necessary for the effect to be long-lasting. A possible development for future research may be to investigate whether lower intensity "top up" training sessions delivered after the initial training are beneficial to maintain improvements in mathematical reasoning long-term.

Although working memory training appears to be a promising method for improving mathematical reasoning ability, the academic benefits of Cogmed did not generalise to reading comprehension. The absence of an improvement in reading comprehension is consistent with the only other randomised controlled trial of Cogmed in typically developing children (Hitchcock & Westwell, 2017) and a meta-analysis of 12 working memory training studies that found no benefits to reading, more generally (Sala & Gobet, 2017). Working memory training does not appear to benefit children's reading abilities and our study suggests that this is the case even when there are large improvements in working memory performance.

Concurrent Working Memory and Metacognitive Strategy Training

The comparison between MetaCogmed and Cogmed allowed us to examine whether metacognitive strategy training led to increased benefit relative to Cogmed training on its own. Importantly, the placebo workbook controlled for possible non-specific effects of metacognitive strategy training, allowing stronger inferences to be made than previous investigations (Partanen et al., 2015). The metacognitive booklet was shown to be effective to some extent because MetaCogmed was associated with greater near-transfer, relative to Cogmed. This was the case for performance on the Spatial Span task at the immediate outcome, notably the task least similar to Cogmed, and average performance across the four working memory tasks at the three month outcome. Metacognitive training may have increased children's awareness of which strategies were most effective, resulting in broader transfer to the Spatial Span task and better consolidation of these strategies for retrieval at the three month outcome. Previously, working memory and metacognitive strategy training has been shown to improve children's working memory immediately (Carretti et al., 2014) and six months after training (Partanen et al., 2015), compared to reading comprehension practice or education as usual. However, this is the first time that working memory and metacognitive strategy training has been shown to have an additional near-transfer effect in children, compared to working memory training alone.

Although MetaCogmed led to immediate improvements in mathematical reasoning relative to the control group, metacognitive strategy training did not provide any additional benefits to maths or reading comprehension compared to Cogmed alone. This may be because Cogmed did not increase working memory capacity per se, or because the metacognitive training was ineffective at promoting generalisation of the newly acquired capacity to the maths and reading tasks. This finding was consistent with a previous study in children with special educational needs (Partanen et al., 2015). Although working memory and metacognitive training has previously been shown to improve children's reading comprehension compared to reading comprehension practice (Carretti et al., 2014), this may have been because children were also taught specific reading strategies (Higgins et al., 2016; National Reading Panel, 2000). Working memory and metacognitive training interventions are still in their infancy and unlikely to be optimal without further research and development; yet MetaCogmed shows promise at maintaining improvements in working memory long-term.

Strengths, Limitations, and Future Directions

MetaCogmed is a standard, inexpensive, and timely intervention that can be delivered to a whole classroom by a single teacher and would be feasible for schools to implement, if it was found to be effective. However, the metacognitive intervention may have been too short and the exercises may have been too narrow to facilitate generalisable improvements across different domains, compared to existing interventions (Adey & Shayer, 1993). Incorporating teacher guidance, more diverse tasks, and interactive group work within our metacognitive

workbook over a more extended time period may have greater potential to foster metacognition and facilitate far-transfer.

A major strength and improvement upon much of the extant literature was the use of an adaptive control group and placebo workbook to control for the effects of expectancy and motivation. Adaptive visual search training has previously been shown to be an excellent control for subjective expectations in young adults (De Simoni & von Bastian, 2018). We also found no significant differences in drop-out and completed training sessions, suggesting that engagement was similar across the groups. While these are objective measures, they are also a fairly indirect indicator of engagement. One could potentially argue that they could have been supplemented with self-report measures; however, children's self-reports can be inaccurate (Goodman, Hinden, & Khandelwal, 2000) and may be limited by immature introspection and metacognition (Lyons & Zelazo, 2011).

One limitation of our study was that we were unable to ascertain whether the metacognitive workbook was effective at fostering metacognitive awareness and strategies. This may be achieved in future by utilising existing self-report (Schraw & Dennison, 1994), parent-report (Gioia & Isquith, 2011), or task-based measures (Krasny-Pacini et al., 2015) of metacognition. More general limitations include the relatively small sample size compared to some previous investigations (Roberts et al., 2016) and considerable drop-out, although this is comparable to other working memory training studies with children (Chacko et al., 2014; Hitchcock & Westwell, 2017).

Conclusion

The present study revealed that working memory training increases working memory performance in typically developing children both immediately and after a three-month delay. Short-term improvements in mathematical reasoning highlight the potential educational impact of working memory training when provided in addition to school as usual. However, future work will need to examine whether these improvements can be maintained longer term and whether they generalise to other academic outcomes. Metacognitive strategy training in addition to working memory training facilitated greater near-transfer three months after training relative to working memory training alone, suggesting that it may be an effective addition to cognitive skill-based training programmes to maintain long-term effects. Nevertheless, to fully realise its potential, children may require more practice applying metacognitive strategies to maths and reading exercises, and more diverse and interactive exercises to promote generalisable improvements in academic outcomes.

References

- Adey, P., & Shayer, M. (1993). An exploration of long-term far-transfer effects following an extended intervention program in the high school science curriculum. *Cognition & Instruction, 11*, 1–29.
- Aksayli, N. D., Sala, G., & Gobet, F. (2018). *The Cognitive and Academic Benefits of Cogmed: A Meta-Analysis*. Manuscript in Preparation: PsyArXiv.
- Alloway, T. P. (2007). *Automated Working Memory Assessment: Manual*. London: Pearson.
- Alloway, T. P., & Alloway, R. G. (2010). Investigating the predictive roles of working memory and IQ in academic attainment. *Journal of Experimental Child Psychology, 106*(1), 20–29. <https://doi.org/10.1016/j.jecp.2009.11.003>
- Alloway, T. P., Gathercole, S. E., & Pickering, S. J. (2006). Verbal and visuo-spatial short-term and working memory in children: Are they separable? *Child Development, 77*(6), 1698–1716. <https://doi.org/10.1111/j.1467-8624.2006.00968.x>
- Ang, S. Y., Lee, K., Cheam, F., Poon, K., & Koh, J. (2015). Updating and working memory training: Immediate improvement, long-term maintenance, and generalisability to non-trained tasks. *Journal of Applied Research in Memory and Cognition, 4*(2), 121–128. <https://doi.org/10.1016/j.jarmac.2015.03.001>
- Anguera, J. A., Bernard, J. A., Jaeggi, S. M., Buschkuhl, M., Benson, B. L., Jennett, S., ... Seidler, R. D. (2012). The effects of working memory resource depletion and training on sensorimotor adaptation. *Behavioural Brain Research, 228*(1), 107–115. <https://doi.org/10.1016/j.bbr.2011.11.040>
- Astle, D. E., Barnes, J. J., Baker, K., Colclough, G. L., & Woolrich, M. W. (2015). Cognitive training enhances intrinsic brain connectivity in childhood. *Journal of Neuroscience, 35*(16), 6277–6283. <https://doi.org/10.1523/JNEUROSCI.4517-14.2015>
- Baddeley, A. D., & Hitch, G. (1974). Working memory. *Psychology of Learning and Motivation - Advances in Research and Theory, 8*, 47–89. [https://doi.org/10.1016/S0079-7421\(08\)60452-1](https://doi.org/10.1016/S0079-7421(08)60452-1)
- Baddeley, A. D., & Hitch, G. J. (1994). Developments in the Concept of Working Memory. *Neuropsychology, 8*(4), 485–493. <https://doi.org/10.1037/0894-4105.8.4.485>
- Bailey, H. R., Dunlosky, J., & Kane, M. J. (2008). Why does working memory span predict complex cognition? Testing the strategy affordance hypothesis. *Memory and Cognition, 36*(8), 1383–1390. <https://doi.org/10.3758/MC.36.8.1383>
- Bailey, H. R., Dunlosky, J., & Kane, M. J. (2011). Contribution of strategy use to performance on complex and simple span tasks. *Memory and Cognition, 39*(3), 447–461. <https://doi.org/10.3758/s13421-010-0034-3>
- Barrett, L. F., Tugade, M. M., & Engle, R. W. (2004). Individual Differences in Working Memory Capacity and Dual-Process Theories of the Mind. *Psychological Bulletin, 130*(4), 553–573. <https://doi.org/10.1037/0033-2909.130.4.553>
- Bjorklund, D. F., Dukes, C., & Brown, R. D. (2008). The development of memory strategies. In *The development of memory in infancy and childhood* (pp. 157–188). Psychology Press.

- Boot, W. R., Simons, D. J., Stothart, C., & Stutts, C. (2013). The pervasive problem with placebos in psychology: Why active control groups are not sufficient to rule out placebo effects. *Perspectives on Psychological Science*, 8(4), 445–454. <https://doi.org/10.1177/1745691613491271>
- Butler, R. W., & Copeland, D. R. (2002). Attentional processes and their remediation in children treated for cancer: A literature review and the development of a therapeutic approach. *Journal of the International Neuropsychological Society*, 8(1), 115–124.
- Carretti, B., Caldarola, N., Tencati, C., & Cornoldi, C. (2014). Improving reading comprehension in reading and listening settings: The effect of two training programmes focusing on metacognition and working memory. *British Journal of Educational Psychology*, 84(2), 194–210. <https://doi.org/10.1111/bjep.12022>
- Chacko, A., Bedard, A. C., Marks, D. J., Feirsén, N., Uderman, J. Z., Chimiklis, A., ... Ramon, M. (2014). A randomized clinical trial of Cogmed working memory training in school-age children with ADHD: A replication in a diverse sample using a control condition. *Journal of Child Psychology and Psychiatry*, 55(3), 247–255. <https://doi.org/10.1111/jcpp.12146>
- Covey, T. J., Shucard, J. L., & Shucard, D. W. (2019). Working memory training and perceptual discrimination training impact overlapping and distinct neurocognitive processes: Evidence from event-related potentials and transfer of training gains. *Cognition*, 182, 50–72.
- Daneman, M., & Carpenter, P. A. (1980). Individual differences in working memory during reading. *Journal Of Verbal Learning And Verbal Behavior*, 19(4), 450–466. [https://doi.org/10.1016/S0022-5371\(80\)90312-6](https://doi.org/10.1016/S0022-5371(80)90312-6)
- De Simoni, C., & von Bastian, C. C. (2018). Working memory updating and binding training: Bayesian evidence supporting the absence of transfer. *Journal of Experimental Psychology: General*, 147(6), 829.
- Dignath, C., & Büttner, G. (2008). Components of fostering self-regulated learning among students. A meta-analysis on intervention studies at primary and secondary school level. *Metacognition and Learning*, 3(3), 231–264. <https://doi.org/10.1007/s11409-008-9029-x>
- Dunlosky, J., & Kane, M. J. (2007). The contributions of strategy use to working memory span: A comparison of strategy assessment methods. *Quarterly Journal of Experimental Psychology*, 60(9), 1227–1245. <https://doi.org/10.1080/17470210600926075>
- Dunning, D. L., & Holmes, J. (2014). Does working memory training promote the use of strategies on untrained working memory tasks? *Memory and Cognition*, 42(6), 854–862. <https://doi.org/10.3758/s13421-014-0410-5>
- Fisher, R. (1998). Thinking about thinking: Developing metacognition in children. *Early Child Development and Care*, 141(1), 1–15. <https://doi.org/10.1080/0300443981410101>
- Gathercole, S. E., Dunning, D. L., Holmes, J., & Norris, D. (2019). Working memory training involves learning new skills. *Journal of Memory and Language*, 105, 19–42.
- Gathercole, S. E., Pickering, S. J., Knight, C., & Stegmann, Z. (2004). Working memory skills and educational attainment: Evidence from national curriculum assessments at 7 and 14 years of age. *Applied Cognitive Psychology: The Official Journal of the Society for Applied Research in Memory and Cognition*, 18(1), 1–16.

<https://doi.org/10.1002/acp.934>

- Gioia, G. A., & Isquith, P. K. (2011). Behavior Rating Inventory for Executive Functions. In *Encyclopedia of Clinical Neuropsychology* (pp. 372–376). New York, NY: Springer.
- Goodman, E., Hinden, B. R., & Khandelwal, S. (2000). Accuracy of teen and parental reports of obesity and body mass index. *Pediatrics*, *106*(1), 52–58.
- Green, C. S., Strobach, T., & Schubert, T. (2014). On methodological standards in training and transfer experiments. *Psychological Research*, *78*(6), 756–772.
<https://doi.org/10.1007/s00426-013-0535-3>
- Guo, Y., Logan, H. L., Glueck, D. H., & Muller, K. E. (2013). Selecting a sample size for studies with repeated measures. *BMC Medical Research Methodology*, *13*(1), 100.
- Harrison, T. L., Shipstead, Z., Hicks, K. L., Hambrick, D. Z., Redick, T. S., & Engle, R. W. (2013). Working memory training may increase working memory capacity but not fluid intelligence. *Psychol Sci*, *24*(12), 2409–2419.
<https://doi.org/10.1177/0956797613492984>
- Henry, L. A., Messer, D. J., & Nash, G. (2014). Testing for near and far transfer effects with a short, face-to-face adaptive working memory training intervention in typical children. *Infant and Child Development*, *23*(1), 84–103. <https://doi.org/10.1002/icd.1816>
- Higgins, S., Katsipatakis, M., Villanueva-Aguilera, A. B., Coleman, R., Henderson, P., Major, L. E., ... Mason, D. (2016). The Sutton Trust-Education Endowment Foundation Teaching and Learning Toolkit. Education Endowment Foundation.
- Hitchcock, C., & Westwell, M. S. (2017). A cluster-randomised, controlled trial of the impact of Cogmed Working Memory Training on both academic performance and regulation of social, emotional and behavioural challenges. *Journal of Child Psychology and Psychiatry*, *58*(2), 140–150. <https://doi.org/10.1111/jcpp.12638>
- Jaeggi, S. M., Buschkuhl, M., Jonides, J., & Perrig, W. J. (2008). Improving fluid intelligence with training on working memory. *Proceedings of the National Academy of Sciences of the United States of America*, *105*(19), 6829–6833.
<https://doi.org/10.1073/pnas.0801268105>
- Jaeggi, S. M., Buschkuhl, M., Jonides, J., & Shah, P. (2011). Short- and long-term benefits of cognitive training. *Proceedings of the National Academy of Sciences of the United States of America*, *108*(25), 10081–10086. <https://doi.org/10.1073/pnas.1103228108>
- Jaeggi, S. M., Studer-Luethi, B., Buschkuhl, M., Su, Y.-F. F., Jonides, J., & Perrig, W. J. (2010). The relationship between n-back performance and matrix reasoning — implications for training and transfer. *Intelligence*, *38*(6), 625–635.
<https://doi.org/10.1016/j.intell.2010.09.001>
- Kane, M. J., Tuholski, S. W., Hambrick, D. Z., Wilhelm, O., Payne, T. W., & Engle, R. W. (2004). The generality of working memory capacity: A latent-variable approach to verbal and visuospatial memory span and reasoning. *Journal of Experimental Psychology: General*, *133*(2), 189–217. <https://doi.org/10.1037/0096-3445.133.2.189>
- Karbach, J., Strobach, T., & Schubert, T. (2015). Adaptive working-memory training benefits reading, but not mathematics in middle childhood. *Child Neuropsychology*, *21*(3), 285–301. <https://doi.org/10.1080/09297049.2014.899336>

- Klingberg, T. (2010). Training and plasticity of working memory. *Trends in Cognitive Sciences*, 14(7), 317–324. <https://doi.org/10.1016/j.tics.2010.05.002>
- Klingberg, T., Fernell, E., Olesen, P. J., Johnson, M., Gustafsson, P., Dahlström, K., ... Westerberg, H. (2005). Computerized training of working memory in children with ADHD - A randomized, controlled trial. *Journal of the American Academy of Child & Adolescent Psychiatry*, 44(2), 177–186. <https://doi.org/10.1097/00004583-200502000-00010>
- Krasny-Pacini, A., Limond, J., Evans, J., Hiebel, J., Bendjelida, K., & Chevignard, M. (2015). Self-awareness assessment during cognitive rehabilitation in children with acquired brain injury: A feasibility study and proposed model of child anosognosia. *Disability and Rehabilitation*, 37(22), 2092–2106. <https://doi.org/10.3109/09638288.2014.998783>
- Kuhn, J. T., & Holling, H. (2014). Number sense or working memory? The effect of two computer-based trainings on mathematical skills in elementary school. *Advances in Cognitive Psychology*, 10(2), 59–67. <https://doi.org/10.5709/acp-0157-2>
- Lövdén, M., Bäckman, L., Lindenberger, U., Schaefer, S., Schmiedek, F., Lovden, M., ... Schmiedek, F. (2010). A theoretical framework for the study of adult cognitive plasticity. *Psychological Bulletin*, 136(4), 659–676. <https://doi.org/10.1037/a0020080>
- Lustig, C., Shah, P., Seidler, R., & Reuter-Lorenz, P. A. (2009). Aging, training, and the brain: A review and future directions. *Neuropsychology Review*, 19(4), 504–522. <https://doi.org/10.1007/s11065-009-9119-9>
- Lyons, K. E., & Zelazo, P. D. (2011). Monitoring, metacognition, and executive function: Elucidating the role of self-reflection in the development of self-regulation. In *Advances in child development and behavior* (Vol. 40, pp. 379–412). Elsevier.
- McCrimmon, A. W., & Smith, A. D. (2013). Review of the Wechsler Abbreviated Scale of Intelligence, (WASI-II). *Journal of Psychoeducational Assessment*, 31(3), 337–341.
- Melby-Lervåg, M., & Hulme, C. (2013). Is working memory training effective? A meta-analytic review. *Developmental Psychology*, 49(2), 270–291. <https://doi.org/10.1037/a0028228>
- Melby-Lervåg, M., Redick, T. S., & Hulme, C. (2016). Working memory training does not improve performance on measures of intelligence or other measures of “far transfer” evidence from a meta-analytic review. *Perspectives on Psychological Science*, 11(4), 512–534.
- National Reading Panel. (2000). Teaching children to read: An evidence-based assessment of the scientific research literature on reading and its implications for reading instruction. *NIH Publication No. 00-4769*, 7, 35. <https://doi.org/10.1002/ppul.1950070418>
- Noack, H., Lovden, M., & Schmiedek, F. (2014). On the validity and generality of transfer effects in cognitive training research. *Psychological Research*, 78(6), 773–789. <https://doi.org/10.1007/s00426-014-0564-6>
- Office for National Statistics. (2013). Graduates in the UK Labour Market 2013. Retrieved July 16, 2015, from <http://www.ons.gov.uk/ons/rel/lmac/graduates-in-the-labour-market/2013/rpt---graduates-in-the-uk-labour-market-2013.html#tab-Graduates-in-the-UK-labour-market-2013>

- Partanen, P., Jansson, B., Lisspers, J., & Sundin, Ö. (2015). Metacognitive Strategy Training Adds to the Effects of Working Memory Training in Children with Special Educational Needs. *International Journal of Psychological Studies*, 7(3). <https://doi.org/10.5539/ijps.v7n3p130>
- Passolunghi, M. C., & Costa, H. M. (2016). Working memory and early numeracy training in preschool children. *Child Neuropsychology*, 22(1), 81–98. <https://doi.org/10.1080/09297049.2014.971726>
- Peng, P., Barnes, M., Namkung, J., Barnes, M., Sun, C., Namkung, J., & Barnes, M. (2015). A meta-analysis of mathematics and working memory: Moderating effects of working memory domain, type of mathematics skill, and sample characteristics. *Journal of Educational Psychology*, 107, 455. <https://doi.org/10.1037/edu0000079>
- Pintrich, P. R. (2000). The role of goal orientation in self-regulated learning. In *Handbook of self-regulation* (pp. 451–502). Elsevier.
- Randall, L., & Tyldesley, K. (2016). Evaluating the impact of working memory training programme on children a systematic review. *Educational and Child Psychology*, 33(1), 34–50. <https://doi.org/10.1080/10170669.2011.610365>
- Redick, T. S., Shipstead, Z., Harrison, T. L., Hicks, K. L., Fried, D. E., Hambrick, D. Z., ... Engle, R. W. (2013). No evidence of intelligence improvement after working memory training: A randomized, placebo-controlled study. *Journal of Experimental Psychology: General*, 142(2), 359–379. <https://doi.org/10.1037/a0029082.supp>
- Roberts, G., Quach, J., Spencer-Smith, M., Anderson, P. J., Gathercole, S. E., Gold, L., ... Wake, M. (2016). Academic outcomes 2 years after working memory training for children with low working memory: A randomized clinical trial. *JAMA Pediatrics*, 170(5), e154568. <https://doi.org/10.1001/jamapediatrics.2015.4568>
- Sala, G., & Gobet, F. (2017). Working memory training in typically developing children: A meta-analysis of the available evidence. *Developmental Psychology*, 53(4), 671–685. <https://doi.org/10.1037/dev0000265>
- Salomon, G., & Perkins, D. N. (1989). Rocky roads to transfer: Rethinking mechanism of a neglected phenomenon. *Educational Psychologist*, 24(2), 113–142. https://doi.org/10.1207/s15326985ep2402_1
- Schraw, G. (1998). Promoting general metacognitive awareness. *Instructional Science*, 26(1–2), 113–125.
- Schraw, G., & Dennison, R. S. (1994). Assessing metacognitive awareness. *Contemporary Educational Psychology*, 19(4), 460–475.
- Shipstead, Z., Hicks, K. L., & Engle, R. W. (2012). Cogmed working memory training: Does the evidence support the claims? *Journal of Applied Research in Memory and Cognition*, 1(3), 185–193. <https://doi.org/10.1016/j.jarmac.2012.06.003>
- Shipstead, Z., Redick, T. S., & Engle, R. W. (2010). Does working memory training generalize? *Psychologica Belgica*, 50(3), 245–276. <https://doi.org/10.5334/pb-50-3-4-245>
- Simons, D. J., Boot, W. R., Charness, N., Gathercole, S. E., Chabris, C. F., Hambrick, D. Z., & Stine-Morrow, E. A. (2016). Do “Brain-Training” Programs Work? *Psychological Science in the Public Interest*, 17(3), 103–186.

<https://doi.org/10.1177/1529100616661983>

- Söderqvist, S., & Bergman-Nutley, S. (2015). Working memory training is associated with long term attainments in math and reading. *Frontiers in Psychology, 6*(NOV), 1–9. <https://doi.org/10.3389/fpsyg.2015.01711>
- Sohlberg, M. M., Harn, B., MacPherson, H., & Wade, S. L. (2014). A pilot study evaluating attention and strategy training following pediatric traumatic brain injury. *Clinical Practice in Pediatric Psychology, 2*(3), 263–280. <https://doi.org/10.1037/cpp0000072>
- Soveri, A., Antfolk, J., Karlsson, L., Salo, B., & Laine, M. (2017). Working memory training revisited: A multi-level meta-analysis of n-back training studies. *Psychonomic Bulletin and Review, 24*(4), 1077–1096. <https://doi.org/10.3758/s13423-016-1217-0>
- Spencer-Smith, M., & Klingberg, T. (2015). Benefits of a working memory training program for inattention in daily life: a systematic review and meta-analysis. *PLoS One, 10*(3), e0119522. <https://doi.org/10.1371/journal.pone.0119522>
- St Clair-Thompson, H., Stevens, R., Hunt, A., Bolder, E., St Clair-Thompson, H., Stevens, R., ... Bolder, E. (2010). Improving children's working memory and classroom performance. *Educational Psychology, 30*(2), 203–219. <https://doi.org/10.1080/01443410903509259>
- StataCorp. (2017). *Stata Statistical Software: Release 15*. College Station, TX: StataCorp LLC.
- Studer-Luethi, B., Bauer, C., & Perrig, W. J. (2016). Working memory training in children: Effectiveness depends on temperament. *Memory and Cognition, 44*(2), 171–186. <https://doi.org/10.3758/s13421-015-0548-9>
- Unsworth, N., & Engle, R. W. (2007). On the division of short-term and working memory: an examination of simple and complex span and their relation to higher order abilities. *Psychological Bulletin, 133*(6), 1038.
- Van Breukelen, G. J. P. (2006). ANCOVA versus change from baseline had more power in randomized studies and more bias in nonrandomized studies. *Journal of Clinical Epidemiology, 59*(9), 920–925. <https://doi.org/10.1016/J.JCLINEPI.2006.02.007>
- von Bastian, C. C., & Oberauer, K. (2014). Effects and mechanisms of working memory training: a review. *Psychological Research, 78*(6), 803–820. <https://doi.org/10.1007/s00426-013-0524-6>
- Wechsler, D. (2005). *Wechsler Individual Achievement Test (WIAT-II UK)*. WIAT-II UK. <https://doi.org/10.1037/t15173-000>
- Witt, M. (2011). School based working memory training: Preliminary finding of improvement in children's mathematical performance. *Advances in Cognitive Psychology, 7*, 7–15. <https://doi.org/10.2478/v10053-008-0083-3>
- Zimmerman, B. J. (2002). Becoming a self-regulated learner: An overview. *Theory into Practice, 41*(2), 64–70.

Tables

Table 1.

Baseline characteristics and tests of differences across groups.

Variables	Control	MetaCogmed	Cogmed	Δ Control vs. MetaCogmed (95% CI)	Δ Control vs. Cogmed (95% CI)	Δ MetaCogmed vs. Cogmed (95% CI)
Randomised (N = 95, 100%)	31 (33%)	32 (34%)	32 (34%)	—	—	—
Gender: Control vs. MetaCogmed (N)	31	32	32	—	—	—
Male: N	16	18	16	—	—	—
Female: N	15	14	16	—	—	—
Other variables: (N)	31	32	32	—	—	—
Age: mean (\pm SD)	12.52 (\pm 0.96)	12.38 (\pm 1.14)	12.63 (\pm 1.25)	-0.14 (-0.67 to 0.39)	0.12 (-0.45 to 0.68)	-0.26 (-0.85 to 0.34)
IQ: mean (\pm SD)	103.97 (\pm 11.47)	109.81 (\pm 10.74)	107.72 (\pm 11.76)	5.84* (0.25 to 11.44)	3.75 (-2.10 to 9.61)	2.09 (-3.53 to 7.72)
Primary outcome variables: (N)	31	32	32	—	—	—
Maths: mean (\pm SD)	101.52 (\pm 9.31)	104.06 (\pm 11.14)	104.09 (\pm 11.62)	2.55 (-2.64 to 7.73)	2.58 (-2.74 to 7.89)	-0.03 (-5.72 to 5.66)
Reading: mean (\pm SD)	101.65 (\pm 9.14)	106.59 (\pm 10.51)	103.81 (\pm 11.93)	4.95 (-0.02 to 9.92)	2.17 (-3.20 to 7.54)	2.78 (-2.84 to 8.40)
Working memory: mean (\pm SD)	103.46 (\pm 9.82)	104.89 (\pm 9.22)	105.12 (\pm 9.11)	1.43 (-3.37 to 6.22)	1.66 (-3.11 to 6.43)	-0.23 (-4.81 to 4.35)
Near-transfer variables: (N)	31	32	32	—	—	—
Digit recall (\pm SD)	100.81 (\pm 11.69)	102.64 (\pm 14.53)	100.88 (\pm 13.35)	1.83 (-4.83 to 8.49)	0.07 (-6.25 to 6.40)	1.76 (-5.22 to 8.73)
Back digit (\pm SD)	101.24 (\pm 14.27)	101.91 (\pm 15.06)	107.64 (\pm 14.03)	0.67 (-6.72 to 8.06)	6.40 (-0.73 to 13.52)	-5.73 (-13.00 to 1.55)
Dot matrix (\pm SD)	103.27 (\pm 12.18)	103.98 (\pm 14.24)	103.66 (\pm 11.17)	0.72 (-5.97 to 7.40)	0.39 (-5.49 to 6.28)	0.33 (-6.07 to 6.72)
Spatial span (\pm SD)	108.53 (\pm 16.93)	111.02 (\pm 11.85)	108.29 (\pm 14.90)	2.49 (-4.85 to 9.83)	-0.23 (-8.26 to 7.79)	2.72 (-4.00 to 9.45)

*denotes $p < 0.05$

Table 2.

Results of the ANCOVAs of primary near- and far-transfer outcomes.

Outcome variables	Time ¹	N	Control	MetaCogmed	Cogmed	Δ Control vs. MetaCogmed	Δ Control vs. Cogmed	Δ MetaCogmed vs. Cogmed
			Mean (95% CI)	Mean (95% CI)	Mean (95% CI)			
Working memory	2	77	106.30 (103.70 to 108.90)	117.17 (114.46 to 119.87)	116.00 (113.12 to 118.87)	10.86*** (7.11 to 14.61)	9.69*** (5.82 to 13.57)	1.17 (-2.78 to 5.12)
	3	77	107.64 (105.04 to 110.24)	115.64 (112.94 to 118.34)	111.91 (109.03 to 114.78)	8.00*** (4.25 to 11.75)	4.27* (0.39 to 8.14)	3.73 (-0.22 to 7.68)
Maths	2	77	102.96 (100.55 to 105.38)	106.32 (103.81 to 108.82)	107.29 (104.63 to 109.96)	3.35 (-0.13 to 6.83)	4.33* (0.73 to 7.93)	-0.98 (-4.63 to 2.68)
	3	77	104.94 (102.13 to 107.76)	107.60 (104.68 to 110.52)	107.43 (104.33 to 110.54)	2.66 (-1.40 to 6.71)	2.49 (-1.70 to 6.68)	0.17 (-4.10 to 4.43)
Reading	2	77	107.39 (104.88 to 109.91)	108.92 (106.32 to 111.53)	106.66 (103.89 to 109.42)	1.53 (-2.10 to 5.16)	-0.74 (-4.48 to 3.01)	2.26 (-1.53 to 6.06)
	3	77	109.63 (107.26 to 112.00)	110.88 (108.42 to 113.34)	107.89 (105.28 to 110.50)	1.25 (-2.18 to 4.67)	-1.74 (-5.27 to 1.79)	2.99 (-0.59 to 6.57)

¹Time:2=Immediate, 3=3month; *denotes $p < 0.05$, ** $p < 0.01$, *** $p < 0.001$

Table 3.

Results from the primary mixed models linear random intercept regressions.

Variables	AWMA: Coefficient (CI)	Maths: Coefficient (CI)	Reading: Coefficient (CI)
Time: (ref: Baseline-Time1)	—	—	—
¹ Time-2	2.21 (-0.22 to 4.64)	0.34 (-2.33 to 3.01)	4.01** (1.33 to 6.66)
Time-3	3.55** (1.12 to 5.98)	2.27 (-0.40 to 4.94)	6.43*** (3.76 to 9.09)
Randomised (ref: Control)	—	—	—
MetaCogmed	1.43 (-3.58 to 6.44)	2.55 (-2.67 to 7.76)	4.95* (0.15 to 9.74)
Cogmed	1.66 (-3.35 to 6.67)	2.58 (-2.64 to 7.79)	2.17 (-2.63 to 6.96)
Interaction (ref: Baseline x Control)	—	—	—
Time-2 x MetaCogmed	10.66*** (7.17 to 14.15)	2.71 (-1.12 to 6.55)	0.07 (-3.76 to 3.91)
Time-2 x Cogmed	9.22*** (5.62 to 12.81)	3.68 (-0.27 to 7.63)	-1.40 (-5.34 to 2.55)
Time-3 x MetaCogmed	7.82*** (4.33 to 11.31)	2.09 (-1.74 to 5.93)	-0.55 (-4.38 to 3.28)
Time-3 x Cogmed	3.76* (0.17 to 7.36)	1.92 (-2.03 to 5.87)	-2.65 (-6.59 to 1.29)
Interaction (ref: Baseline x Cogmed)			
Time-2 x MetaCogmed	1.45 (-2.21 to 5.10)	-0.97 (-4.97 to 3.04)	1.47 (-2.53 to 5.47)
Time-3 x MetaCogmed	4.06* (0.40 to 7.71)	0.17 (-3.84 to 4.18)	2.10 (-1.90 to 6.10)

¹Time:2=Immediate, 3=3month; *denotes $p<0.05$, ** $p<0.01$, *** $p<0.001$

Table 4.

The results of the ANCOVAs on the individual near-transfer task outcomes.

Outcome variables	Time ¹	N	Control	MetaCogmed	Cogmed	Δ Control vs. MetaCogmed	Δ Control vs. Cogmed	Δ MetaCogmed vs. Cogmed
			Mean (95% CI)	Mean (95% CI)	Mean (95% CI)			
Dot matrix	2	77	108.27 (103 to 114)	118.97 (113 to 125)	122.11 (116 to 128)	10.71** (3 to 19)	13.85** (6 to 22)	-3.14 (-12 to 5)
	3	77	114.54 (108 to 121)	117.15 (111 to 124)	114.25 (107 to 121)	2.61 (-6 to 11)	-0.29 (-9 to 9)	2.90 (-6 to 12)
Back digit	2	77	102.22 (98 to 106)	116.91 (113 to 121)	112.51 (108 to 117)	14.69*** (9 to 21)	10.29** (4 to 16)	4.40 (-2 to 11)
	3	77	102.53 (98 to 107)	117.72 (113 to 122)	108.82 (104 to 114)	15.19*** (9 to 22)	6.29 (0 to 13)	8.90** (2 to 16)
Spatial span	2	77	113.27 (109 to 118)	121.89 (118 to 126)	114.59 (110 to 119)	8.62** (3 to 15)	1.32 (-5 to 8)	7.30* (1 to 14)
	3	77	111.37 (107 to 116)	117.97 (113 to 123)	116.72 (112 to 122)	6.60 (0 to 13)	5.34 (-2 to 12)	1.26 (-6 to 8)
Digit recall	2	77	101.98 (98 to 106)	111.41 (107 to 115)	113.55 (109 to 118)	9.43*** (4 to 15)	11.57*** (6 to 17)	-2.14 (-8 to 4)
	3	77	102.17 (99 to 106)	109.92 (106 to 113)	107.52 (104 to 111)	7.75** (3 to 13)	5.35* (0 to 10)	2.40 (-3 to 8)

¹Time:2=Immediate, 3=3month; *denotes $p<0.05$, ** $p<0.01$, *** $p<0.001$

Table 5.

Mixed model results for outcomes on the individual near-transfer tasks.

Variables	Dot Matrix: coefficient (CI)	Back Digit: coefficient (CI)	Spatial Span: coefficient (CI)	Digit Recall: coefficient (CI)
Time: (ref: Baseline-Time1)	—	—	—	—
¹ Time-2	4.52 (-1 to 10)	0.02 (-4 to 4)	4.47 (0 to 9)	0.56 (-3 to 4)
Time-3	10.8*** (5 to 16)	0.58 (-4 to 5)	2.78 (-2 to 8)	0.76 (-3 to 4)
Randomized (ref: Control)	—	—	—	—
MetaCogmed	0.72 (-7 to 8)	0.67 (-6 to 8)	2.49 (-5 to 10)	1.83 (-5 to 9)
Cogmed-group	0.39 (-7 to 8)	6.4 (-1 to 14)	-0.23 (-7 to 7)	0.07 (-7 to 7)
Interaction (ref: Baseline x Control)	—	—	—	—
Time-2 x MetaCogmed	10.7** (3 to 19)	14.47*** (8 to 21)	7.65* (1 to 14)	9.4*** (5 to 14)
Time-2 x Cogmed	13.18** (5 to 22)	8.54** (2 to 15)	1.74 (-5 to 9)	11.36*** (6 to 16)
Time-3 x MetaCogmed	2.66 (-5 to 11)	14.97*** (9 to 21)	5.54 (-1 to 12)	7.69** (3 to 13)
Time-3 x Cogmed	-1.03 (-9 to 7)	3.69 (-3 to 10)	5.2 (-2 to 12)	5.15* (0 to 10)
Interaction (ref: Baseline x Cogmed)				
Time-2 x MetaCogmed	-2.48 (-11 to 6)	5.92 (-1 to 12)	5.91 (-1 to 13)	-1.97 (-7 to 3)
Time-3 x MetaCogmed	3.69 (-5 to 12)	11.28*** (5 to 18)	0.33 (-7 to 7)	2.53 (-3 to 8)

Figures

Figure 1. CONSORT flow diagram.

Figure 2. Baseline-adjusted group means at immediate and three month outcomes (ANCOVA)

Figure 3. Plots of estimated means and 95% confidence intervals (mixed models)

Figure 1. CONSORT flow diagram.

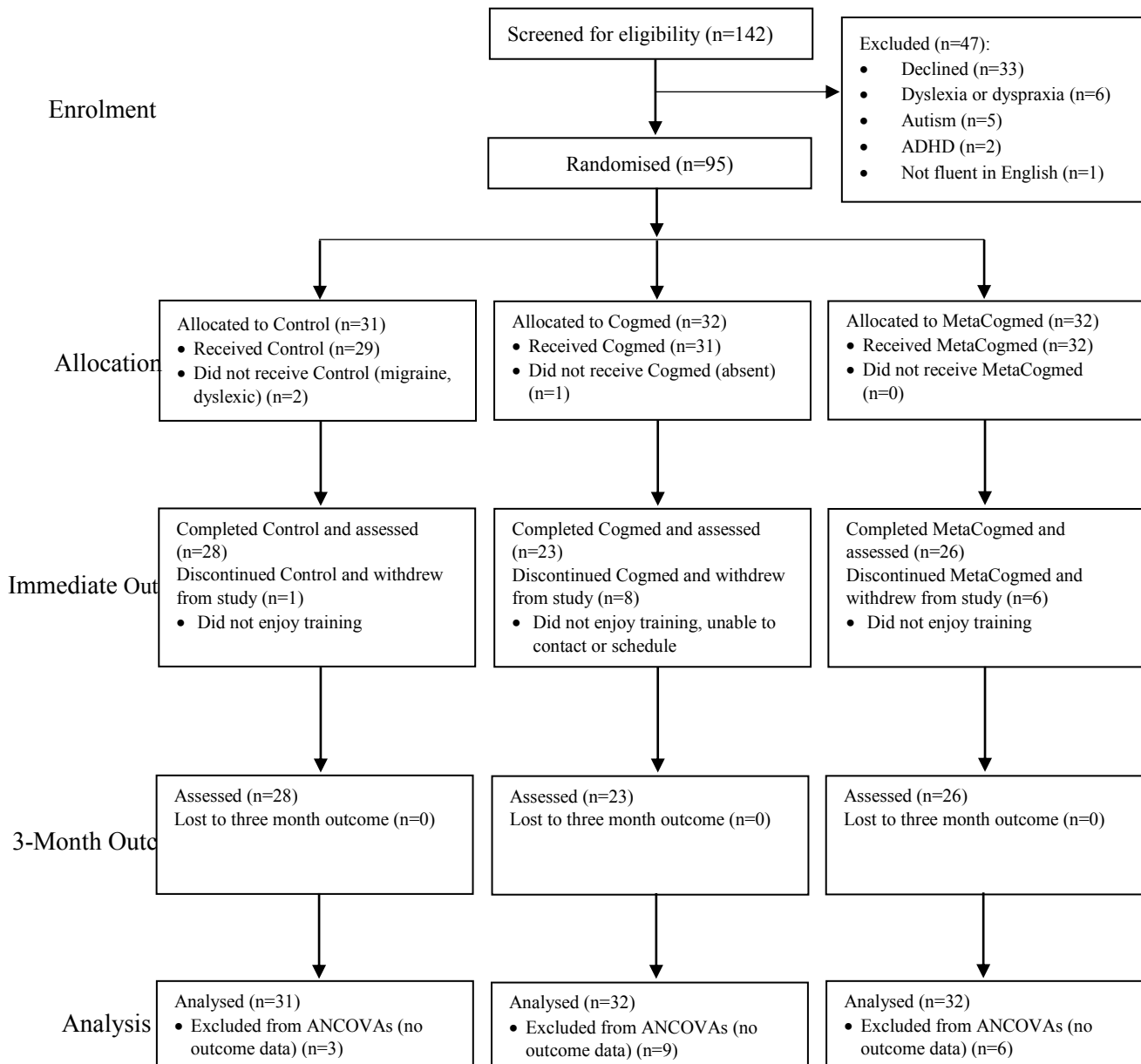


Figure 2. Baseline-adjusted group means at immediate and three month outcomes (ANCOVA)

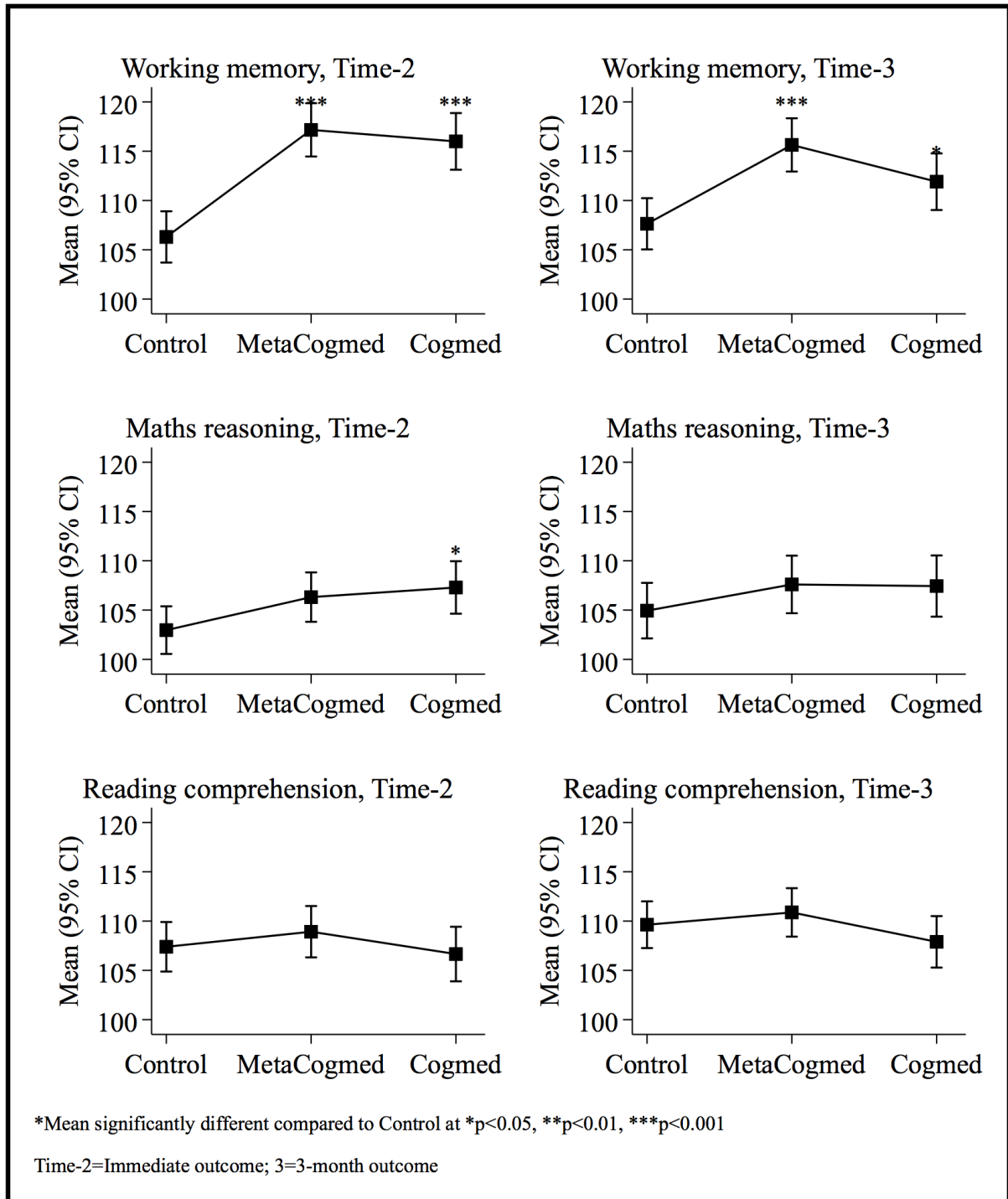


Figure 3. Plots of estimated means and 95% confidence intervals (mixed models)

