

**ELUCIDATING THE EFFECTS OF RAPAMYCIN AND PF4 ON THE MNU
INDUCED FEMALE RATS AND HUMAN BREAST CANCER CELLS
(MCF-7)**

TENGGU AHMAD DAMITRI AL-ASTANI BIN TENGGU DIN

UNIVERSITI SAINS MALAYSIA

2015

LAMPIRAN A : ABSTRAK

ELUCIDATING THE EFFECTS OF RAPAMYCIN AND PF4 ON THE MNU INDUCED FEMALE RATS AND HUMAN BREAST CANCER CELLS (MCF-7)

Tengku Ahmad Damitri Al-Astani b Tengku Din
PhD Molecular Pathology
Pathology Department
School of Medical Sciences, Universiti Sains Malaysia
Health Campus, 16150 Kubang Kerian, Malaysia

Introduction: There is a strong evidence that tumour growth is not just a consequence of uncontrolled proliferation but also of reduced apoptosis. Bax and Bcl-2 are Bcl-2 family like apoptosis regulator. They function either as suppressor (Bcl-2) or a promoter (Bax) of apoptosis. As a member of the inhibitors of apoptosis (IAP), survivin is also a promoter of cellular proliferation and thus a key player in cancer progression. Beside, caspases also occupy a central role in maintaining cellular homeostasis.

Objectives: Therefore, this research aims to examine the apoptotic effects of Rapamycin and Platelet Factor 4 (PF4) on 1-methyl-1-nitrosourea (MNU)-induced mammary carcinoma through Bcl-2- survivin and caspase modulated pathways in female Sprague Dawley Rat (SDR) and *in vitro* MCF-7 breast cancer cell lines.

Methods: One hundred 21 days old female SDR were given an intraperitoneal injection (IP) of MNU to induce breast cancer formation. When tumour size reached 14.5 ± 0.5 mm, intratumoural injections of the following interventions were given; Group 1 (pre-intervention control, n=20 and post-intervention control, n=20), Group 2 (Rapamycin-treated, n=20), Group 3 (PF4-treated, n=20) and Group 4 (Rapamycin+PF4-treated, n=20). Tumour growth was then morphologically assessed using haematoxylin

and eosin (H&E) and immunohistochemistry (IHC) utilizing pro-apoptosis (Bax) and anti-apoptosis markers (Bcl-2), survivin and caspases-3,-6,-7,-8, and -9. Besides that, the MCF-7 cell line was used for *in vitro* assessment. Initially, half maximal inhibitory concentration (IC₅₀) of each drug was determined. The MCF-7 cell lines were then exposed to Rapamycin and PF4 and Rapamycin+PF4 at IC₅₀ concentrations, after which they were subjected to flow cytometry and Western blot analyses.

Results: Bax was significantly expressed at higher levels in the rapamycin-treated and Rapamycin+PF4-treated groups than controls (p<0.001). Besides, survivin was significantly downregulated in the PF4-treated and Rapamycin+PF4-treated group when compared to controls (p<0.001). On the other hand, Bcl-2 expression was found not to be significantly altered in all treatment groups. Caspase-3, was significantly expressed at higher levels in both PF4-treated and Rapamycin+PF4-treated groups than controls (p<0.001), as well as rapamycin-only group when compared to Rapamycin+PF4-treated and PF4-treated groups (both p<0.001). Apart from that, caspase-6 was also significantly expressed in Rapamycin-treated, PF4-treated and Rapamycin+PF4-treated than the control groups (p<0.001). Besides, either PF4 or Rapamycin+PF4 combination was associated with increased caspase-7 expression, compared to the controls (p<0.001). However, Rapamycin-treated group showed a significantly higher caspase-8 expression when compared to PF4-treated (p<0.05). For caspase-9, higher caspase-9 expression was observed in Rapamycin-treated group when compared to control, Rapamycin+PF4-treated and PF4-treated cohorts (p<0.001). The IC₅₀ Rapamycin, PF4 and Rapamycin+PF4 were 0.4 µg/ml, 6 µg/ml and 0.4 µg/ml+1.0 µg/ml respectively. Rapamycin and PF4, on the other hand, were non-toxic to the normal HMEC cells.

Furthermore, Rapamycin, PF4 and Rapamycin+PF4 induced a cell cycle arrest in MCF-7 cell lines at G0/G1, S and G0/G1 phases, respectively. Rapamycin, PF4 and Rapamycin+PF4 induced the upregulation of pro-apoptotic Bax and the downregulation of anti-apoptotic Bcl-2 and survivin. The expression levels of caspase-3 and caspase-8 were consistent in the treated group when compared with the control group. The expression of caspases -6, -7 and -9 protein were increased when treated with Rapamycin, Rapamycin + PF4 and PF4 when compared with the control group.

Conclusion, this study provides new insights on the mechanistic properties of Rapamycin and PF4 as anti-cancer agents in breast cancer animal model and *in vitro* MCF-7 cell lines. The results lend support to the notion that apoptotic induction by Rapamycin and PF4 and was mediated by both the intrinsic and extrinsic pathways through the activation of caspase-9, caspase-3 and caspase-8 activation.

Professor Dr. Hasnan Jaafar: Supervisor

Assoc. Prof. Dr. Azman Seeni: Co-Supervisor

**ELUCIDATING THE EFFECTS OF RAPAMYCIN AND PF4 ON THE MNU
INDUCED FEMALE RATS AND HUMAN BREAST CANCER CELLS
(MCF-7)**

by

TENGGU AHMAD DAMITRI AL-ASTANI BIN TENGGU DIN

**Thesis submitted in fulfillment of the requirements
for the degree of
Doctor of Philosophy**

UNIVERSITI SAINS MALAYSIA

Ogos 2015

ACKNOWLEDGEMENT

In the name of *Allah* the Most Merciful and the Most Compassionate. All praise and gratitude are due to *Allah* and may peace and blessing be upon the prophet Muhammad s.a.w and his family and his companions. First of all, I would like to thank *Allah Subhana-Wataa'la*. I, indeed, truly believed that without His guidance, I won't be able to fatefully meet all the "Great Hearts" and "Helping Hands" whenever I am in difficulties. *Alhamdulillah*.

I am grateful to many people who have made it possible for me to complete this thesis. It is with this thought that I would like to take this opportunity to thank them.

I would like to express my appreciation to my supervisors, Professor Dr. Hasnan Jaafar and as well as my co-supervisor, Associate Professor Dr Azman Seeni Mohamed (IPPT) for their consistent support, supervision and advice throughout and until the completion of this study.

My sincere and profound gratitude goes to my heartiest memorable Dean, the late Professor Syed Mohsin Sahil Jamalullail, for his excellent help, continuous assistance, invaluable encouragement, guidance and comments. May ALLAH give him peace and blessing "there".

I also wish to express my sincere thanks to my former Dean, Professor Mustaffa Musa and Professor Nor Hayati Othman, the former Directors of Centre of Research Initiative, Clinical & Health Sciences (CRI-CHS) for their excellent help, continuous

assistance, invaluable encouragement, guidance and comments during my study and whilst writing up this thesis.

My greatest thanks and sincere gratitude to Professor Shaharum Shamsuddin from Molecular Biology Lab, School of Health Sciences and Dr. Aziah Ismail from INFORMM for their great guidance on cell culture & western blot procedure during this study.

My respects and thanks are due to all staff at the Pathology Lab in the Department of Pathology especially Scientific Officers, Mrs. Rusidah Mat Yatim, Lab Technologists, Mrs. Jamaliah Lin, Mr. Rosli Jusoh, Mr. Ismail Manan, Mrs Umi Atikah and Mrs. Siti Nor Zuraini Idris for aiding me during my study.

My heartiest gratitude also goes to Mrs Asiah, Mr Yusuf, Mr Marzuki, Mr Chairol, Ms Eda and all staffs at Craniofacial Lab, School of Dental Sciences, USM. Thank you also to Mr Jamalluddin from Dept of Immunology, School of Medical Sciences, USM and to all the staff at Molecular Biology Lab's, School of Health Sciences, USM, especially to Ms Aini. Special thanks to Professor Jafri Malin Abdullah and staff from Neuroscience Lab's, for their very much appreciated help.

Finally, my heartfelt appreciation goes to my friends Zai, Wirda and Dr Muhammad Irfan for their kindest guidance, who have assisted me in various aspects of this study and given me the much needed support and encouragement. Thank you to all of you.

This study was supported by USM RU (1001/PPSP/813035) grant & USM Short Term grant (304/PSKBP/61310029).

DEDICATION

THIS THESIS IS ESPECIALLY DEDICATED TO MY FAMILY:

MY BELOVED PARENTS, KU (TENGGU DIN) AND MA (WAN HALIMAH),

MY BELOVED WIFE, AZIRAWATI BT ISMAIL, MY PRECIOUS DAUGHTERS,
TENGGU NUR DANISYA AL-AWATIFF, TENGGU NURDARINA AL-AFIFAH,
TENGGU NURDALIEYA AL-ALIYAH AND TENGGU NURDAMIA AL-
ATHIRAH.

MY BELOVED SIBLINGS, KAK DARA, ATAR, UYA, AKLIMA, DAIMAH,
HAKIM, WARDAH AND BALYAN.

“WITHOUT YOUR ENDLESS SUPPORT, SYMPATHETIC AND THOUGHTFUL
ATTENTION, CONSTANT INSPIRATION AND FAITH IN ME OVER THE
YEARS, I WOULD CERTAINLY NOT BE ABLE TO BE HERE TO PRESENT
MY THESIS TO YOU”.

TABLE OF CONTENTS

	PAGE
ACKNOWLEDGEMENT	ii
DEDICATION	iv
TABLE OF CONTENTS	v
LIST OF TABLES	xi
LIST OF FIGURES	xii
LIST OF PLATES	xvi
LIST OF ABBREVIATIONS, TERMINOLOGIES AND SYMBOLS	xix
LIST OF APPENDICES	xxv
LIST OF PUBLICATIONS	xxvi
ABSTRAK	xxvii
ABSTRACT	xxx
CHAPTER 1 INTRODUCTION	
1.1 Overview On Breast Cancer	1
1.2 About The Breast	2
1.3 Breast Cancer Pathogenesis	4
1.4 Morphogenesis Of Normal Mammary Gland	7
1.5 1-Methyl-1-Nitrosourea (MNU) Induced Breast Cancer In Rats	9
1.6 Programmed Cell Death	12
1.6.1 Necrosis	13
1.6.2 Apoptosis	14
1.7 Morphology And Biochemical Features	16
1.7.1. Mechanism Of Apoptosis Pathway	20
1.7.1.1 Extrinsic Pathway (Death Receptor)	22
1.7.1.2 Intrinsic Pathway (Mitochondrial-Dependent Pathway)	23
1.8 Bcl-2 Family	24
1.8.1 Bax (Pro-Apoptosis Marker)	27
1.8.2 Bcl-2 (Anti-Apoptosis Marker)	28
1.9 Survivin (Inhibitors Of Apoptosis Proteins)	30
1.10 Caspases Family Markers	32

	PAGE
1.11 Rapamycin	36
1.12 Platelet Factor 4 (PF4)	40
1.13 Problem Statement	42
1.14 Objectives Of The Study	43
1.14.1 General Objective	43
1.14.2 Specific Objective	43
CHAPTER 2 METHODOLOGY	
2.1 Study Design	44
2.1.1 Background Of Study	44
2.1.2 Flow charts Of Study	46
2.2 Research Ethics	51
2.3 <i>In vivo</i> Study	48
2.3.1 Reagents And Materials	48
2.3.2 Animals	50
2.3.3 MNU Mammary Tumour Induction	50
2.3.4 Experimental Design	50
2.3.5 Tumour Sample Collection	52
2.4 Calculation Of Sample Size	53
2.5 Experimental Equipments	54
2.6 Immunohistochemistry	60
2.6.1 Reagents And Materials For Immunohistochemistry	66
2.7 Securing Tumour Samples	67
2.8 Storage Of Tumour	68
2.9 Processing Of Skin Biopsy	68
2.10 Embedding Of Tumour	69
2.11 Making Tumour Blocks	69
2.12 Sectioning Of Tumour Blocks	70
2.13 Haematoxylin And Eosin (H&E)	70
2.13.1 Reagents For H&E	70
2.13.2 H&E Staining Procedure	72
2.13.3 The Purpose Of Using H&E Stain	73

2.14 Immunohistochemistry Scoring System (ISS)	73
2.15 Measurement Of Apoptosis	74
2.15.1 Expression Of Pro-Apoptosis (Bax) And Anti-Apoptosis (Bcl-2) Markers	74
2.15.2 Bax And Bcl-2 Staining Procedure	74
2.15.3 Measurement Of Bax And Bcl-2 Expression	76
2.15.4 Expression Of Caspases -3, -6, -7, -8 and -9	76
2.15.5 Caspases Staining Procedure	76
2.15.6 Measurement Of Caspases Expression	77
2.15.7 Expression Of Survivin	78
2.15.8 Survivin Staining Procedure	78
2.15.9 Measurement Of Survivin Expression	79
2.16 <i>In Vitro</i> Study	80
2.16.1 General Stock And Buffers Solutions	80
2.16.1.1 Running Buffer	80
2.16.1.2 Tank Buffer	80
2.16.1.3 Transfer Buffer	80
2.16.1.4 1X TBS Buffer	80
2.16.1.5 TBS 0.1% Tween 20	81
2.16.1.6 TBS 0.3% Tween 20	81
2.16.1.7 Blocking Buffer	81
2.16.1.8 10% Sodium Dodecyl Sulfate (SDS)	81
2.16.1.9 10% Ammonium Persulfate (APS)	81
2.16.1.10 Coomassie Blue Staining Solution	82
2.16.1.11 Destaining Solution	82
2.16.1.12 Phosphate Buffer Saline (PBS)	82
2.16.1.13 Radio-Immunoprecipitation Assay (RIPA) Buffer	82
2.16.1.14 Culture Media	82
2.16.2 Maintenance Of Cell Culture	83
2.16.2.1 Culture Techniques	83
2.16.2.2 Cell Lines	83
2.16.2.3 Thawing Frozen Cells	83

2.16.2.4 Preparation of Cell Suspension	84
2.16.2.5 Subculturing Cell Lines	85
2.16.2.6 Cryopreservation Of Cell Lines	85
2.16.3 The Determination Of Half-Maximal Inhibitory Concentration (IC ₅₀) For Rapamycin And PF4	86
2.16.3.1 Serial Screening Of Different Rapamycin And PF4 Concentration	86
2.16.4 Antiproliferation Assay	87
2.16.5 Cytotoxicity Assay on Normal Cells	87
2.16.6 Morphological Observation On MCF-7	87
2.16.7 Flow Cytometrix Analysis Of Apoptosis In MCF-7	88
2.16.8 Flow Cytometrix Analysis Of MCF-7 Cell Cycle	89
2.16.9 Western Blotting Analysis	89
2.16.9.1 Preparation Of Cell Lysate	89
2.16.9.2 Determination Of Protein Concentration	90
2.16.9.3 Preparation Of Gels For SDS-PAGE Gel Electrophoresis	91
2.16.10 Statistical Analysis	93

CHAPTER 3 RESULTS

	PAGE
3.1 Histology Of MNU-Induced Mammary Carcinoma	96
3.1.1 Tumour Incidence In The Murine Model	99
3.1.2 Type Of Tumour In Intervention Groups	99
3.2 Immunohistochemistry (IHC) Analysis	105
3.2.1 Expression Of Bax (Pro-Apoptosis Marker)	105
3.2.2 Expression Of Bcl-2 (Anti-Apoptosis Marker)	108
3.2.3 Expression Of Survivin (Inhibitor Of Apoptosis Protein)	109
3.2.4 Expression Of Caspase-3 (Apoptosis Executioner)	111
3.2.5 Expression Of Caspase-6 (Apoptosis Executioner)	113
3.2.6 Expression Of Caspase-7 (Apoptosis Executioner)	115
3.2.7 Expression Of Caspase-8 (Apoptosis Activator)	117
3.2.8 Expression Of Caspase-9 (Apoptosis Activator)	119

3.3 Effect Of Rapamycin, PF4 And Rapamycin+PF4 On Cell Viability	124
3.3.1 Cellular Growth Inhibition Of Rapamycin, PF4 And Rapamycin+PF4. The Determination Of Inhibitory Concentration 50% (IC ₅₀) On MCF-7	124
3.4 Anti-Proliferative Effects of Rapamycin, PF4 And Rapamycin+PF4	128
3.5 Rapamycin, PF4 And Rapamycin+PF4 Cytotoxicity Assay On Normal Cell Lines	132
3.6 Cell Death Was Induced by Rapamycin, PF4 And Rapamycin+PF4 in MCF-7 Cell Lines	135
3.6.1 Morphological Alterations Upon Treatment With Rapamycin, PF4 And Rapamycin+PF4	135
3.7 Induction of Apoptosis By Rapamycin, PF4 And Rapamycin+PF4 On MCF-7 Cell Lines	138
3.8 Rapamycin, PF4 And Rapamycin+PF4 Modulate The Progression Of The Cell Cycle Phases In MCF-7 Cells Lines	141
3.9 Western Blot Analysis Of Rapamycin, PF4 And Rapamycin+PF4 On MCF-7 Cell Lines	146
 CHAPTER 4 DISCUSSION AND CONCLUSION	
4.1 Effect Of Rapamycin And Platelet Factor 4 On Breast Cancer Growth	149
4.2 Effect Of Rapamycin and PF4 On Histology Of MNU-Induced Mammary Carcinoma And Characteristic Of MCF-7 Cell Lines	155
4.3 Effect Of Rapamycin And PF4 On Bax, Bcl-2 And Survivin In Breast Cancer	159
4.4 Effects Of Rapamycin And PF4 On Caspases -3, -6, -7, -8 and -9 In Breast Cancer	166
4.5 Summary	173
4.6 Conclusion	180
4.7 Limitations Of The Study	180
4.7.1 <i>In vivo</i> Study	180
4.7.2 <i>In vitro</i> study	181
	181
4.8 Suggestion For Future Studies	182
4.9 Impact Of The Study	182
 REFERENCES	 183

APPENDIX	209
PUBLICATIONS, PRESENTATIONS AND SEMINARS	213

LIST OF TABLES

		PAGE
Table 1.1	Differential features of apoptosis and necrosis	17
Table 1.2	Bcl-2 family proteins	26
Table 1.3	Subfamily members of caspases family	32
Table 2.1	Experimental equipments and disposables	54
Table 2.2	List of antibodies	56
Table 2.3	List of consumables and commercial kits	56
Table 2.4	List of computer applications	57
Table 2.5	List of chemicals and reagents	57
Table 2.6	List of cell lines	59
Table 2.7	List of drugs	59
Table 2.8	Details of antibodies used and types of tissues	62
Table 2.9	Processing schedule of Tissue-Tek VIP	69
Table 2.10	List of drugs	83
Table 3.1	The distribution of aggressiveness of malignant tumour in all groups	102
Table 3.2	The summary of Bax, Bcl-2 and survivin expression IHC analysis	121
Table 3.3	The summary of caspase-3, caspase-6 and caspase-7 expression IHC analysis	122
Table 3.4	The summary of caspase-8 and caspase-9 expression IHC analysis	123
Table 3.5	The percentage of apoptotic cell distribution on MCF-7. The cells were treated with IC ₅₀ of Rapamycin, PF4 and Rapamycin+PF4 at 72 hours	140

LIST OF FIGURES

		PAGE
Figure 1.1	Anatomy of the breast and chest wall	3
Figure 1.2	Schematic representation of various stages of mammary gland development	9
Figure 1.3	Morphological comparisons between apoptotic and necrotic cell deaths	18
Figure 1.4	Schematic representation of apoptotic events.	21
Figure 1.5	Overview of caspase cascades and their inhibitors	35
Figure 1.6	Model of the mTOR Signaling Network in Mammalian Cells	39
Figure 2.1	Flow chart of the <i>in vivo</i> study	46
Figure 2.2	Flow chart of the <i>in vitro</i> study	47
Figure 3.1	The tumour sizes incidence of the breast tumour decrease when compared with intervention control groups. Each bar represent the mean \pm SD of average of size (mm) between pre-intervention, post-intervention group and intervention groups of tumour for 7 days.	98
Figure 3.2	The mean \pm SD expression of Bax between intervention and control groups. * Indicates the significant differences p value _{Bax} <0.001 (one-way ANOVA with Games-Howell corrections for multiple comparisons).	106
Figure 3.3	The mean expression of Bax between intervention and control groups.*p value _{Bax} <0.001 (one-way ANOVA with Games-Howell corrections for multiple comparisons)	108
Figure 3.4	The mean \pm SD expression of Bcl-2 between intervention and control groups. p value _{Bcl2} =0.091 (one-way ANOVA with Games-Howell corrections for multiple comparisons).	108
Figure 3.5	The mean \pm SD number of survivin-expressing cells between intervention a control groups. * Indicates the significant differences. *p valueSurvivin <0.001 (one-way ANOVA with Sidak corrections for multiple comparisons).	109
Figure 3.6	The mean \pm SD number of cells expressing caspase-3 between intervention and control groups.*p value _{Casp3} <0.001 (one-way ANOVA with Games-Howell corrections for multiple comparisons.	111

Figure 3.7	The mean \pm SD expression of caspase-6 between intervention and control groups. *p value _{Casp6} =0.001017 (one-way ANOVA). Using Games-Howell corrections for multiple comparisons.	113
Figure 3.8	The mean \pm SD expression of caspase-7 between intervention and control groups. *p value _{Casp7} = 0.017 (one-way ANOVA). Using Games-Howell corrections for multiple comparisons.	115
Figure 3.9	The mean \pm SD expression of caspase-8 between intervention and control groups. *p value _{Casp8} = 0.042 (Welch's F test). Using Games-Howell corrections for multiple comparisons.	117
Figure 3.10	The mean \pm SD expression of caspase-9 between intervention and control groups.*Indicates the significant differences p value _{Casp9} <0.001(Kruskal-Wallis test). Using multiple Mann-Whitney tests with Bonferroni corrections for multicomparisons. For Bonferroni, p value <0.0083 is considered significant.	119
Figure 3.11	Effects on MCF-7 cell growth upon treatment with different concentrations of Rapamycin for 72 hrs. The concentrations that inhibited 50% of the MCF-7 cell populations for Rapamycin was designated by black arrows. Rapamycin reduced cell growth compared to untreated cells and such effect is dose dependent manner (IC ₅₀ = 0.4 μ g/ml). Data are presented as mean \pm standard deviation (SD) of triplicate experiments. **Significant difference at p < 0.01, all comparisons were made with respect to untreated cells.	125
Figure 3.12	Effects on MCF-7 cell growth upon treatment with different concentrations of PF4 for 72 hrs. The concentrations that inhibited 50% of the MCF-7 cell populations for PF4 was designated by black arrows. PF4 also reduced cell growth compared to untreated cells which is also in a dose dependent manner (IC ₅₀ = 6 μ g/ml). Data are presented as mean \pm standard deviation (SD) of triplicate experiments. **Significant difference at p < 0.01, all comparisons were made with respect to untreated cells.	126
Figure 3.13	Effects on MCF-7 cell growth upon treatment with different concentrations of combination Rapamycin+PF4 for 72 hrs. The concentrations that inhibited 50% of the MCF-7 cell populations for Rapamycin+PF4 were designated by black arrows. Rapamycin+PF4 reduced MCF-7 cell growth compared to untreated cells in a dose dependent manner (IC ₅₀ =0.4+1.0 μ g/ml). Data are presented as mean \pm standard deviation (SD) of triplicate experiments. **Significant difference at p<0.01, all comparisons were made with respect to untreated cells.	136

Figure 3.14	Anti proliferative effect of Rapamycin across time. The MCF-7 cells were treated with Rapamycin up to 8 days, with renewal of the growth medium on day 3 and day 6. Concentration cell viability and duration of treatment (day) upon treatment with Rapamycin. Data are presented as mean \pm standard deviation (SD) of triplicate experiments.	130
Figure 3.15	Anti proliferative effect of PF4 across time. The MCF-7 cells were treated with PF4 up to 8 days, with renewal of the growth medium on day 3 and day 6. Concentration cell viability and duration of treatment (day) upon treatment with PF4. Data are presented as mean \pm standard deviation (SD) of triplicate experiments.	130
Figure 3.16	Anti proliferative effect of Rapamycin+PF4 across time. The MCF-7 cells were treated with Rapamycin+PF4 up to 8 days, with renewal of the growth medium on day 3 and day 6. Concentration of viable cells across duration of treatment (day) in MCF-7 cells treated with Rapamycin+PF4. Data are presented as mean \pm standard deviation (SD) of triplicate experiments.	131
Figure 3.17	Comparison of the growth inhibitory effects of Rapamycin, PF4 and Rapamycin+PF4 on MCF-7 proliferation.	131
Figure 3.18	Rapamycin, PF4 and Rapamycin+PF4 effects on normal HMEC. Cells were treated with Rapamycin, PF4 and Rapamycin+PF4 at each IC ₅₀ concentration for 72 hours. Percentages of cell viability upon treatment with Rapamycin, PF4 and Rapamycin+PF4 were shown on the y-axis. Data shown are in mean \pm standard deviation (SD) of triplicate experiments.	133
Figure 3.19	Effect of Rapamycin, PF4 and Rapamycin+PF4 on the induction of apoptosis in MCF-7. The cells were treated with Rapamycin, PF4 and Rapamycin+PF4 at IC ₅₀ for 72 hours. The upper left, lower left, lower right and upper right quadrants indicate necrotic/debris cells, viable cells, early apoptotic and late apoptotic cells, respectively.	139
Figure 3.20	Effect of Rapamycin, PF4 and Rapamycin+PF4 on cell cycle phase of MCF-7. The cells were treated with Rapamycin, PF4 and Rapamycin+PF4 at IC ₅₀ for 72 hours.	143
Figure 3.21	The distribution of MCF-7 cell cycle phases. The cells were treated with Rapamycin at IC ₅₀ for 72 hours. Data represents percentages of the cells in each phase of Rapamycin-treated cells. Data shown are in mean \pm standard deviation (SD) of triplicate experiments. * indicates significant differences (p< 0.01).	144

Figure 3.22	The distribution of MCF-7 cell cycle phases. The cells were treated with PF4 at IC ₅₀ for 72 hours. Data represents percentages of the cells in each phase of PF4-treated cell. Data shown are in mean ± standard deviation (SD) of triplicate experiments. * indicates significant differences (p< 0.01).	144
Figure 3.23	The distribution of MCF-7 cell cycle phases. The cells were treated with Rapamycin+PF4 at IC ₅₀ for 72 hours. Data represents percentages of the cells in each phase of Rapamycin+PF4 treated cells. Data shown are in mean ± standard deviation (SD) of triplicate experiments.*indicate significant differences (p<0.01).	145
Figure 3.24	Protein expression levels of Bax, Bcl-2, survivin, caspase-3, caspase-6, caspase-7, caspase-8 and caspase-9 of MCF-7 in Rapamycin, PF4 and combined Rapamycin+PF4. The cells were incubated in PF4, Rapamycin or Rapamycin+PF4 at each IC ₅₀ for 72 hours.	148
Figure 4.1	A proposed schematic representation of rapamycin and PF4 effect on the molecular pathway of apoptosis mechanism in this study	178
Figure 4.2	A proposed schematic representation of combination rapamycin and PF4 effect on the molecular pathway of apoptosis mechanism in this study	179

LIST OF PLATES

		PAGE
Plate 3.1	The MNU induced tumour in SDR with a palpable lesion. a) The tumour located at the cervical-thoracic mammary region, b) the arrow shows the nipples of the breast as an identification of a breast pad, c) the arrow shows the clearly-delineated vascularised mammary tumour with a big blood vessel, d) the size of tumour was measured using digital calliper.	97
Plate 3.2	(A) The photomicrographs of normal histological mammary breast of the SDR (H&E, original magnification x100).	103
	(B) The photomicrographs histological cribriform carcinoma of the SDR shows the irregular nests of tumour with punched-out hole (H&E, original magnification x100).	103
	(C) The photomicrographs histological papillary carcinoma of the SDR shows structure of fibrovascular cores covered by the tumour cells (H&E, original magnification x400).	104
	(D) The photomicrographs histological IDC-NOS carcinoma of the SDR shows structure of tumour cells invaded the adjacent tissues (H&E, original magnification x100).	104
Plate 3.3	(A) Histological section showing Bax positive expression (brown colour) in tumour treated with Rapamycin (IHC, original magnification x100).	107
	(B) Histological section showing Bax positive expression (brown colour) in tumour untreated control group (IHC, original magnification x100).	107
Plate 3.4	(A) Histological section showing positive survivin expression (brown colour) in tumour treated with PF 4(IHC, original magnification x100).	110
	(B) Histological section showing positive survivin expression brown colour) in tumour specimens in control groups controls (IHC, original magnification x100).	110

Plate 3.5	(A) Histological section showing positive caspase-3 expression (brown colour) in tumour specimens in Rapamycin+PF4 groups (IHC, original magnification x100).	112
	(B) Histological section showing positive caspase-3 expression (brown colour) in tumour specimens of control groups (IHC, original magnification x100).	112
Plate 3.6	(A) Histological section showing caspase-6 positive expression (brown colour) in tumour of Rapamycin (IHC, original magnification x100).	114
	(B) Histological section showing caspase-6 positive expression (brown colour) in tumour of control groups (IHC, original magnification x100).	114
Plate 3.7	(A) Histological section showing caspase-7 positive expression (brown colour) in tumour of PF4 groups (IHC, original magnification x100).)	116
	(B) Histological section showing caspase-7 positive expression (brown colour) in tumour of control groups (IHC, original magnification x100).	116
Plate 3.8	(A) Histological section showing caspase-8 positive expression (brown colour) in tumour of PF4 groups (IHC, original magnification x100).	118
	(B) Histological section showing caspase-8 positive expression (brown colour) in tumour of control groups (IHC, original magnification x100).	118
Plate 3.9	(A) Histological section showing caspase-9 positive expression (brown colour) in tumour of PF4 groups (IHC, original magnification x100).	120
	(B) Histological section showing caspase-9 positive expression (brown colour) in tumour of control groups (IHC, original magnification x100).	120
Plate 3.10	The morphology of the cells were not affected upon treatment with Rapamycin, PF4 and Rapamycin+PF4 when compared with HMEC untreated control cells. This showed that Rapamycin, PF4 and Rapamycin+PF4 causes no toxic on HMEC and can be considered as safe to be used on normal cells.	134

- Plate 3.11 Reduced cell number and morphological changes at different magnification after 72 hours. The cells were treated with Rapamycin, PF4 and Rapamycin+PF4 at IC₅₀ and were observed under inverted phase contrast microscope. The untreated cells (a) were homogenously distributed with polygonal shapes, distinct boundaries and homogenous cellular contents. On the contrary, the number of cells were reduced upon treatment with Rapamycin, PF4 and Rapamycin+PF4 at each IC₅₀ (b-d), with obvious loss of characteristic appearance, became rounded and subsequently detached from the culture surface, indicating that the cell growth had been successfully inhibited. 136
- Plate 3.12 Effect of Rapamycin, PF4 and Rapamycin+PF4 on MCF-7 cells indicating apoptotic-related features. The cells were treated with IC₅₀ of Rapamycin, PF4 and Rapamycin+PF4 at 72hours and observed under phase contrast inverted microscope (magnification 100x). Red arrows show of Rapamycin, PF4 and Rapamycin+PF4 treated cell with the presence of: a-Apoptotic bodies; b-irregular shapes; c-Condensed nuclei and d-cell elongation 137

LIST OF ABBREVIATIONS, TERMINOLOGIES AND SYMBOLS

4E-BP1	4E-Binding Protein 1
A20	Cys2/Cys2 Zinc Finger Protein
ABC	Avidin-Biotin Complex
AKT	Protein Kinase B
AMPK	AMP-Activated Protein Kinase
Apaf-1	Apoptosis Activating Factor
Apo3L	Apo3 Ligand
Apo2L	Apo2 Ligand
APS	Ammonium Persulfate
ARACS	Animal Research & Services Centre Of Universiti Sains Malaysia
ATCC	American Type Cell Collection
ATP	Adenosine 5'-Triphosphate
Bad	BCL2-Associated Agonist Of Cell Death
Bak	BCL2-Antagonist/Killer 1
Bax	Bcl-2-Associated X Protein
Bcl-xL	B-Cell Leukemia XL
Bcl-2	B Cell Lymphoma Gene-2

Bid	BH3 Interacting Domain Death Agonist
BH	Bcl-2 Homology
BSA	Bovine Serum Albumin
cDNA	Complementary DNA
C. elegans	Caenorhabditis Elegans
c-Myc	Regulator Gene That Codes For A Transcription Factor
Caspases	Cysteine Proteases
DAB	Diaminobenzidine
DLBCL	Diffuse B-Cell Lymphomas
DISC	Death-Inducing Signaling Complex
dH ₂ O	Distilled Water
DCIS	Ductal Carcinoma In Situ
DMBA	7,12-Dimethylbenz[A] Anthracene
DMEM	Dulbecco's Modified Eagle Medium
DMSO	Dimethyl Sulphoxide
DNA	Deoxyribonucleic Acid
DR3	Death Receptor 3
EDTA	Ethylenediaminetetraacetic Acid
EGFR	Epidermal Growth Factor

EPR-1	Effector Cell Protease Receptor-1
ER- α	Estrogen Receptor Alpha
FACS	Fluorescent-Activated Cell Sorting
FADD	Fas-Associated Death Domain
FasL	Fatty Acid Synthetase Ligand
FasR	Fatty Acid Synthetase Receptor
FBS	Fetal Bovine Serum
FDA	Food And Drug Administration
FKBP12	FK506 Binding Protein 12
FITC	Fluorescein Isothiocyanate
FKBP12	12-Kda FK506-Binding Protein
FKBP38	FK506-Binding Protein 38
g	Gram
GAP	Gtpase Actativing Protein
GDP	Guanosine Diphosphate
GTP	Guanosine 5' Triphosphate 2
HER-2	Human Epidermal Growth Factor Receptor
HIER	Heat-Induced Epitope Retrieval
HIF-1	Hypoxia Inducible Factor 1 Cancer

HMEC	Human Mammary Epithelial Cell
HRP	Horseradish Peroxidase
IAP	Inhibitor of Apoptosis Protein
ICE	Interleukin-1–Converting Enzyme
IDC-NOS	Invasive Ductal Carcinomas Not Otherwise Specified
IDC-NST	Invasive Ductal Carcinomas No Special Type
IDP	Intraductal Proliferations
IGF-R	Insulin-Like Growth Receptors
IHC	Immunohistochemistry
ISS	Imunohistochemistry Scoring System
kD	Kilodalton
L	Liter
MCF-7	Michigan Cancer Foundation-7
MNU	1-Methyl-1-Nitrosourea
mTOR	Mammalian Target of Rapamycin
mTORC1	Rapamycin-Sensitive Complex
mTORC2	Rapamycin-Insensitive Complex
Myc	Myelocytomatosis Viral Oncogene Homolog
p70S6K	P70 Ribosomal S6 Kinase

p53	Tumour Protein P53
PBS	Phosphate Buffer Saline
PCD	Programmed Cell Death
PDGF	Platelet Derived Growth Factor
PDK1	3-Phosphoinositide-Dependent Protein
PEG	<i>Polyethylene Glycol</i>
PF4	Platelet Factor 4
PI	Propidium Iodide
PIDD	Protein With A Death Domain
PI3K	The Phosphoinositide 3-Kinase
PS	Phosphatidylserine
Raptor	Rapamycin-Associated Protein Of Mtor
Rictor	Rapamycin-Insensitive Companion Of Mtor
RIPA	Radioimmunoprecipitation Assay
Ser/Thr	Serine/Threonine
SDR	Sprague Dawley Rat
SDS	Sodium Dodecyl Sulfate
SMAC	Second Mitochondria-Derived Activator of Caspases
STAT3	Signal Transducer And Activator of Transcription 3

TBS	Tris Buffer Saline
TBE	Trypan Blue Exclusion
TEB	Terminal End Buds
TEMED	Tetramethylethylenediamine
TGF	Tumour Growth Factor
TNF	Tumour Necrosis Factor
TNF- α	Tumour Necrosis Factor Alpha
TNFR1	Type 1 TNF Receptor
TRADD	TNF Receptor-Associated Death Domain
VEGF	Vascular Endothelial Growth
VEGFR	Vascular Endothelial Growth Factor Receptor
WAP	Whey Acidic Protein

LIST OF APPENDICES

		PAGE
Appendix A	Preparation of standard solution (BSA) using 2 mg/ml BSA	209
Appendix B	Dilution factor of protein lysate concentration	210
Appendix C	Components of resolving gels for preparation of SDS-PAGE gels	211
Appendix D	Components of stacking gels for preparation of SDS-PAGE gels	212
Appendix D	The preparation of antibodies used for Western blot	213

LIST OF PUBLICATIONS, PRESENTATIONS AND SEMINARS

		PAGE
Publication 1	Damitri TD, Azman Seeni, Wirdatul-Nur, Shaharum Shamsuddin, Hasnan Jaafar. Anti-Cancer effect of Rapamycin on MCF-7 Cancer Cell Line: A Preliminary Study. 16 th National Conference on Medical & Health Science, USM Kubang Kerian. 22-23 June 2011 (Poster Presentation)	214
Publication 2	Zaihasni MY, Wirdatul NMK, Hilda SS, Din TADT, Azman Seeni, Jaafar H. Effect of N-Nitroso-N-Methylurea (MNU) on Tumour Incidence and Tumour Number in Rat Breast Cancer Model. 17th National Conference on medical and Health Sciences (NCMS), 27-28 May 2012 (Poster Presentation)	215
Publication 3	Damitri TD, Azman Seeni, Wirdatul-Nur, Shaharum Shamsuddin, Hasnan Jaafar . Inhibition Effect Of PF4 On Breast Cancer Cells, MCF-7: A Preliminary Study. 17th National Conference on medical and Health Sciences (NCMS), 27-28 May 2012 (Oral presentation)	216
Publication 4	Damitri TD, Azman Seeni, Wirdatul-Nur, Shaharum Shamsuddin, Hasnan Jaafar. Rapamycin Act As Apoptotic Inducer on MCF-7 Breast Cancer Cells. The 7th Princess Chulaborn International Science Congress, Cancer: From Basic Research To Cure, 29 November 2012-3 Disember 2012 (Poster Presentation)	217
Publication 5	Zaihasni MY, Wirdatul-Nur MK, Damitri TD, Shahidan MS, Hilda SS, , Azman Seeni, Hasnan Jaafar. Effect of rapamycin and platelet factor-4 (PF4 on 1-methyl-1-nitrosourea (MNU) induced breast cancer. 17th National Conference on medical and Health Sciences (NCMS), 27-28 May 2012 (Poster Presentation)	218

Publication 6	Damitri TD, Azman Seeni, Wirdatul-Nur, Shaharum Shamsuddin, Hasnan Jaafar. Mechanism of Rapamycin and PF4 Inducing Apoptosis in MCF-7 Breast Cancer. International conference on medical & health sciences (ICMHS), 22-24 May 2013 (Oral Presentation)	219
Publication 7	Tengku Ahmad Damitri Tengku Din, Azman Seeni, Wirdatu-Nur, Muhammad Ifran Abdul Jalal, Shaharum Shamsuddin, Hasnan Jaafar. Differential Effects of Rapamycin and PF4 on Apoptotic Regulation by Caspase Family members in MNU-Induced Murine Breast Carcinoma Model. MACB 24th CONFERENCE 28th – 29th May 2014, Kuala Lumpur Convention Centre (oral presentation)	220
Publication 8	Tengku Ahmad Damitri Al-Astani Tengku Din, Shazana Hilda Shamsuddin, Fauziah Mohamad Idris, Wan Nor Ariffin Wan Mansor, Muhamad Ifran Abdul Jalal, Hasnan Jaafar. Rapamycin and PF4 induces apoptosis by upregulating Caspase -3, -6, -7, -8 and -9 in MNU- induced breast cancer. Published in Asian Pacific Journal of Cancer Prevention (APJCP), 15 (2014): 3939-44. IF: 1.237 (full paper)	221
Publication 9	Tengku Ahmad Damitri Al-Astani Tengku Din, Azman Seeni, Wirdatul-Nur, Shaharum Shamsuddin, Hasnan Jaafar. Suppression Effects of Rapamycin on Cell Apoptosis Activities of MCF-7 Human Breast Cancer cell. Published in Asian Pacific Journal of Cancer Prevention (APJCP), 15.24 (2014): 10659-10663 IF: 1.5 (full paper)	222
Publication 9	Tengku Ahmad Damitri Al Astani Tengku Din, Azman Seeni, Muhamad Saiful Bahri Yusoff, Shaharum Shamsuddin, Hasnan Jaafar. Pf4-induced Apoptosis In Breast Cancer In Vivo Study: The Role Of The Caspases Family. APIAP 2015 The 9th Asia Pacific International Academy of Pathology Congress, 4-7 June 2015 (Poster Presentation).	223

**KEBERKESANAN RAPAMYCIN DAN PF4 PADA MODEL HAIWAN
INDUKSI MNU KANSER PAYUDARA DAN TITISAN SEL KANSER
(MCF-7)**

ABSTRAK

Terdapat bukti yang kukuh bahawa pertumbuhan tumor bukan sahaja akibat daripada proliferasi yang tidak terkawal tetapi juga apoptosis dikurangkan. Bax dan Bcl-2 adalah protein keluarga Bcl-2 yang mengawal proses apoptosis. Ia berfungsi sama ada sebagai anti-apoptosis (Bcl-2) atau pro-apoptosis (Bax). Perencat apoptosis (IAP), survivin juga sebagai anti-apoptotik, dimana ia mempromosi proliferasi sel dan memainkan peranan utama dalam perkembangan kanser. Disamping itu, caspase juga memainkan peranan penting untuk mengekalkan homeostasis sel. Oleh itu, kajian ini bertujuan untuk mengkaji kesan apoptotik Rapamycin dan Platelet Faktor 4 (PF4) ke atas model kajian kanser payudara tikus betina melalui induksi 1-metil-1-nitrosourea (MNU) yang karsinogenik dan dalam titisan sel kanser MCF-7. Tindak balas ini seterusnya melihat kepada kesan laluan ekspresi keluarga Bcl-2, survivin dan keluarga caspase. Sebanyak seratus ekor tikus betina (SDR), berumur 21 hari diberikan MNU secara suntikan intraperitoneum (IP) untuk merangsang pembentukan kanser payudara. Apabila tumor mencapai saiz 14.5 ± 0.5 mm, model tikus tersebut dibahagikan kepada beberapa kumpulan mengikut jenis rawatan yang diberikan seperti berikut; Kumpulan 1 (pra-intervensi, n=20 dan selepas intervensi, n=20), Kumpulan 2 (rapamycin, n=20), Kumpulan 3 (PF4, n=20) dan Kumpulan 4 (rapamycin+PF4, n=20). Perubahan morfologi tumor kemudian dinilai dengan menggunakan pewarna hematoxilin eosin (H&E) serta imunohistokimia (IHC) dengan menggunakan penanda pro-apoptosis (Bax), anti-apoptosis (Bcl-2), survivin

dan caspase-3, -6, -7, -8 dan -9. Di samping itu, MCF-7 telah digunakan untuk analisis secara *in vitro*. Kemudian MCF-7 diteruskan untuk analisis menggunakan sitometri aliran dan pemendapan western. Didapati bahawa taburan ekspresi Bax meningkat dengan tinggi dalam kumpulan yang dirawat dengan Rapamycin secara sangat signifikan ($p < 0.001$) dan Rapamycin+PF4 secara signifikan ($p = 0.007$) apabila dibandingkan dengan kontrol. Selain itu, ekspresi survivin menunjukkan penurunan yang sangat signifikan dalam kumpulan yang dirawat dengan PF4 dan Rapamycin+PF4 apabila dibandingkan dengan kontrol ($p < 0.001$). Sebaliknya, ekspresi Bcl-2 didapati tidak berbeza dengan ketara dalam semua kumpulan rawatan. Caspase-3 menunjukkan ekspresi yang sangat signifikan dalam kumpulan yang dirawat dengan PF4 dan Rapamycin+PF4 secara sangat signifikan ($p < 0.001$) apabila dibandingkan dengan kontrol dan juga kumpulan yang dirawat dengan rapamycin sahaja apabila dibandingkan dengan Rapamycin+PF4 dan kumpulan PF4 (masing-masing $p < 0.001$). Selain itu, ekspresi caspase-6 menunjukkan taburan yang sangat signifikan dalam kumpulan rawatan Rapamycin, PF4 dan Rapamycin+PF4 apabila dibandingkan dengan kumpulan control ($p < 0.001$). Selain itu, ekspresi caspase-7 menunjukkan ekspresi yang sangat signifikan dalam kumpulan yang dirawat sama ada dengan PF4 atau Rapamycin+PF4 apabila dibandingkan dengan kontrol ($p < 0.001$). Walau bagaimanapun, kumpulan Rapamycin sahaja menunjukkan ekspresi caspase-8 yang lebih tinggi apabila dibandingkan dengan PF4 ($p < 0.05$). Manakala ekspresi caspase-9 menunjukkan ekspresi yang signifikan ($p < 0.05$) dalam kumpulan Rapamycin sahaja berbanding dengan kontrol dan Rapamycin+PF4 dan PF4 dirawat kohort ($p < 0.001$). Rapamycin, PF4 dan Rapamycin+PF4 menunjukkan kesan perencatan pada IC_{50} 0.4 $\mu\text{g/ml}$, 6 $\mu\text{g/ml}$ dan 0.4+1.0 $\mu\text{g/ml}$ masing-masing. Rapamycin dan PF4, pada masa yang sama juga telah didapati tidak toksik kepada sel

HMEC. Tambahan pula, rapamycin, PF4 dan Rapamycin+PF4 menyebabkan gangguan kitaran sel di G0/G1, S dan G0/G1, masing-masing. Rapamycin, PF4 dan Rapamycin+PF4 mendorong peningkatan paras protein pro-apoptotik Bax dan penurunan paras protein anti-apoptotik Bcl-2 dan survivin. Paras protein caspases-3 dan caspase-8 konsisten dalam kumpulan yang dirawat apabila dibandingkan dengan kumpulan kontrol. Manakala paras protein -6, -7 dan -9 didapati telah meningkat apabila dirawat dengan Rapamycin, PF4 dan Rapamycin+PF4 apabila dibandingkan dengan kumpulan kontrol. Kesimpulan, kajian ini telah menemui hasil baru tentang sifat mekanistik Rapamycin, PF4 dan Rapamycin+PF4 sebagai agen anti-kanser dalam kanser payudara model haiwan *in vivo* dan *in vitro*, MCF-7-bahagian sel. Pengenal pastian laluan isyarat kemungkinan melibatkan kematian sel secara apoptosis telah mengakibatkan gangguan kitaran sel telah dibuktikan sehingga ke peringkat molekular. Keputusan ini telah disokong melalui induksi apoptotik oleh Rapamycin, PF4 dan Rapamycin+PF4 yang mengaktifkan kedua-dua laluan intrinsik dan ekstrinsik melalui pengaktifan caspase-9, caspase-3 dan caspase-8. Selain itu, rawatan Rapamycin, PF4 dan Rapamycin+PF4 juga boleh merencatkan pertumbuhan kanser payudara dan mendorong apoptosis melalui caspase yang bergantung kepada laluan mitokondria dan mungkin menyebabkan kerosakan DNA.

**ELUCIDATING THE EFFECTS OF RAPAMYCIN AND PF4 ON THE MNU
INDUCED FEMALE RATS AND HUMAN BREAST CANCER CELLS
(MCF-7)**

ABSTRACT

There is a strong evidence that tumour growth is not just a consequence of uncontrolled proliferation but also of reduced apoptosis. Bax and Bcl-2 are Bcl-2 family like apoptosis regulator. They function either as suppressor (Bcl-2) or a promoter (Bax) of apoptosis. As a member of the inhibitors of apoptosis (IAP), survivin is also a promoter of cellular proliferation and thus a key player in cancer progression. Beside, caspases also occupy a central role in maintaining cellular homeostasis. Therefore, this research aims to examine the apoptotic effects of Rapamycin and Platelet Factor 4 (PF4) on 1-methyl-1-nitrosourea (MNU)-induced mammary carcinoma through Bcl-2- survivin and caspase modulated pathways in female Sprague Dawley Rat (SDR) and *in vitro* MCF-7 breast cancer cell lines. One hundred 21 days old female SDR were given an intraperitoneal injection (IP) of MNU to induce breast cancer formation. When tumour size reached 14.5 ± 0.5 mm, intratumoural injections of the following interventions were given; Group 1 (pre-intervention control, n=20 and post-intervention control, n=20), Group 2 (Rapamycin-treated, n=20), Group 3 (PF4-treated, n=20) and Group 4 (Rapamycin+PF4-treated, n=20). Tumour growth was then morphologically assessed using haematoxylin and eosin (H&E) and immunohistochemistry (IHC) utilizing pro-apoptosis (Bax) and anti-apoptosis markers (Bcl-2), survivin and caspases-3,-6,-7,-8, and -9. Besides that, the MCF-7 cell line was used for *in vitro* assessment. Initially, half maximal inhibitory concentration (IC_{50}) of each drug was determined. The MCF-7 cell lines were then exposed to Rapamycin and PF4 and Rapamycin+PF4 at IC_{50} concentrations, after

which they were subjected to flow cytometry and Western blot analyses. Bax was significantly expressed at higher levels in the rapamycin-treated and Rapamycin+PF4-treated groups than controls ($p < 0.001$). Besides, survivin was significantly downregulated in the PF4-treated and Rapamycin+PF4-treated group when compared to controls ($p < 0.001$). On the other hand, Bcl-2 expression was found not to be significantly altered in all treatment groups. Caspase-3, was significantly expressed at higher levels in both PF4-treated and Rapamycin+PF4-treated groups than controls ($p < 0.001$), as well as rapamycin-only group when compared to Rapamycin+PF4-treated and PF4-treated groups (both $p < 0.001$). Apart from that, caspase-6 was also significantly expressed in Rapamycin-treated, PF4-treated and Rapamycin+PF4-treated than the control groups ($p < 0.001$). Besides, either PF4 or Rapamycin+PF4 combination was associated with increased caspase-7 expression, compared to the controls ($p < 0.001$). However, Rapamycin-treated group showed a significantly higher caspase-8 expression when compared to PF4-treated ($p < 0.05$). For caspase-9, higher caspase-9 expression was observed in Rapamycin-treated group when compared to control, Rapamycin+PF4-treated and PF4-treated cohorts ($p < 0.001$). The IC_{50} Rapamycin, PF4 and Rapamycin+PF4 were $0.4 \mu\text{g/ml}$, $6 \mu\text{g/ml}$ and $0.4 \mu\text{g/ml} + 1.0 \mu\text{g/ml}$ respectively. Rapamycin and PF4, on the other hand, were non-toxic to the normal HMEC cells. Furthermore, Rapamycin, PF4 and Rapamycin+PF4 induced a cell cycle arrest in MCF-7 cell lines at G₀/G₁, S and G₀/G₁ phases, respectively. Rapamycin, PF4 and Rapamycin+PF4 induced the upregulation of pro-apoptotic Bax and the downregulation of anti-apoptotic Bcl-2 and survivin. The expression levels of caspase-3 and caspase-8 were consistent in the treated group when compared with the control group. The expression of caspases -6, -7 and -9 protein were increased when treated with Rapamycin, Rapamycin + PF4 and PF4 when compared with the control

group. In conclusion, this study provides new insights on the mechanistic properties of Rapamycin and PF4 as anti-cancer agents in breast cancer animal model and *in vitro* MCF-7 cell lines. The results lend support to the notion that apoptotic induction by Rapamycin and PF4 and was mediated by both the intrinsic and extrinsic pathways through the activation of caspase-9, caspase-3 and caspase-8 activation.

CHAPTER 1

INTRODUCTION

1.1 Overview On Breast Cancer

Breast cancer is the commonest malignancy in women and the second leading cause of cancer deaths. The latest 2012 report on the incidence and mortality from breast cancer showed that 226,870 new cases of invasive breast cancer and 39,510 breast cancer deaths are expected to arise among U.S. women (Ma & Jemal, 2013). On the other hand, the incidence and mortality of breast cancer rates over the past 20 years have sharply increased in economically less developed regions. Based on the GLOBOCAN report in 2008, it was estimated that half of the new worldwide breast cancer cases (1.38 million) and 60 % of the breast cancer deaths (458,000) occurred in developing countries (GLOBOCAN 2008 (IARC) 2008). Besides that, new data published by the National Cancer Institute in 2013 demonstrated that the number of new cases and death from breast cancer among women in the United States were 232,340 and 2,240, respectively. Based on this data the number of breast cancer cases is on the ascendancy.

As in Malaysia, breast cancer is the most common cancer in women because probably because men have less of the female hormones estrogen and progesterone, which can promote breast cancer cell growth. About 3,242 cases of breast cancer were diagnosed in women in 2007, contributing 18.1% of all reported cancer cases and 32.1% of total cancer cases in women (National Cancer Registry Report 2007). It has predilection for all major ethnic groups which include Malays, Chinese and Indians (Yip et al., 2006).

1.2 About The Breast

The breast is generally made up of fatty tissue. This tissue consists a set of network of lobes, which are composed of tiny, tube-like structures called lobules that houses milk glands (Azordegan et al., 2013; Rees & Bath, 2000). Tiny ducts fix the glands, lobules and lobes, carrying the milk from the lobes to the nipple, which is positioned at the middle of the areola (the darker spot that surrounds the nipple) (Figure 1.1). Blood and lymphatic vessels also run throughout the breast; blood nourishes the cells and the lymphatic channels drain physical waste products (Heys, 2011; Tse et al., 2013). The lymphatic vessels connect to lymph nodes, the tiny, bean-shaped organs that play paramount roles in immunological defense against infections.

The mammary glands of mammals are unique since it evolved into an organ that is specialized in synthesizing, secreting, and distributing milk to the newborns which is critical for their optimal nutrients, protection, and development (Nguyen et al., 2011). In humans, the female mammary gland lifespan is characterized by harsh changes in architecture, composition, and functionality, mediated by obvious changes in gene appearance, that distinguishes its physiological stages of development, all of which are intended at allowing it to perform its function as a milk-producing organ upon the birth of the infant (Hassiotou & Geddes, 2013). The key developmental milestones of mammary glands consist of fetal growth, pubertal expansion, infant (pre-pubertal) growth, lactation and pregnancy associated remodeling, and post-lactation and post-menopausal involution (Hassiotou & Geddes, 2013). A vital knowledge on the anatomy, development, physiology, and regulation of the breast is important in the understanding of both the normal biology

and function of this organ and its benign or malignant pathologies which may ensure a successful implementation of relevant treatments on each malady.

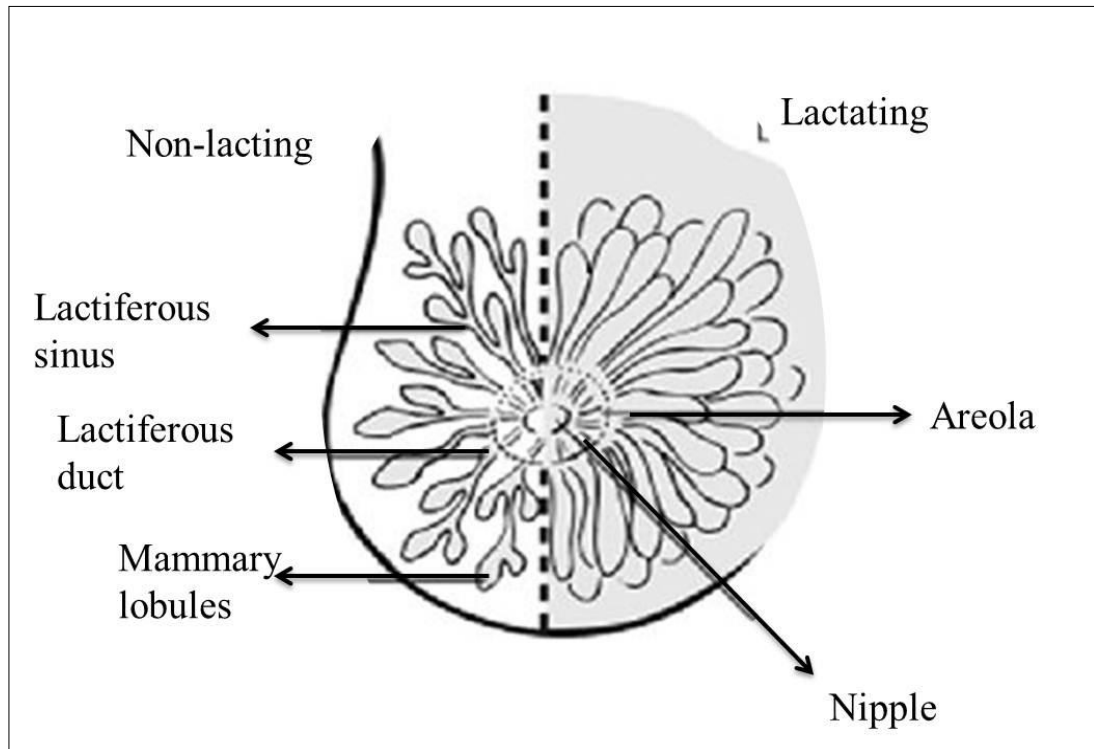


Figure 1.1 Anatomy of the breast and chest wall (Heys, 2011).

1.3 Breast Cancer Pathogenesis

Cancer exists as a result of mutations, or abnormal changes, in the genes responsible for regulating cellular growth and its physiological maintenance (Børresen-Dale et al., 2010; Voduc et al., 2010). The genes are in each cell's nucleus, which acts as the "control room" of each cell. Generally, the cells in human bodies restore themselves through an orderly process of cell growth: healthy new cells take over as old ones senesced and withered (Weigelt et al., 2010). However, as time goes by, mutations can activate certain genes and deactivate others in a cell. That genetically-altered cell gains the ability to keep proliferating in such a disorderly fashion, producing identical daughter cells which eventually culminate in the formation of a tumour (Weinberg, 2013).

There are two types of tumour; benign (not dangerous to health) and malignant (has the potential to be dangerous) (Bhattarai et al., 2011). The benign tumours are considered non-cancerous: their cells are genetically and morphologically similar to the normal ones; they grow much gradually and do not invade adjacent tissues or disseminate to the other parts of the body (Kennecke et al., 2010; Liu et al., 2011). Malignant tumours are, on the contrary, cancerous. Left unchecked, malignant cells can ultimately spread beyond the tumour's primary site to other organs in the body (Chang et al., 2011; Kennecke et al., 2010).

Breast cancer therefore refers to any malignant tumour that originates from normal mammary cells (Bombonati & SgROI, 2011; Chang et al., 2011). Generally, breast cancer either begins in the cells of the lobules, which are the milk-producing

glands, or the ducts, the passages that drain milk from the lobules to the nipple (Bombonati & Sgroi, 2011; Rakha et al., 2006). Less commonly, breast cancer may also begin in the stromal tissues, which include the fatty and fibrous connective tissues of the breast (Fentiman & D'Arrigo, 2004; Voduc et al., 2010).

Breast cancer can be classified into biologically and clinically different entities according to its histological type (Santagata et al., 2014) and histological grades, both carry different prognostic values (Horlings et al., 2013; Santagata et al., 2014). Tumour grade is measured by the degree of histological and cytological differentiation (i.e. tubule formation and nuclear pleomorphism) and the proliferative potential (i.e. mitotic index) of the tumour, both reflect its aggressiveness (Dinkel et al., 2000). It has also been included as one of the prognostic determinants in various validated prognostic staging systems such as the Nottingham Prognostic Index and Adjuvant! Online, from which the accurate tailoring of breast cancer treatment can be made possible (Horlings et al., 2013; Narbe et al., 2014). Interestingly, breast cancer histological grade has been shown to correlate well with its genetic and transcriptomic features and these observation has led to the devising of microarray-based genomic signatures which are useful for prognostic and research purposes (Garcia-Closas et al., 2013; Horlings et al., 2013).

Contrarily, histological type of breast cancer refers to the tumour growth patterns (Horlings et al., 2013). Pathologist has long been fascinated with the histological diversity of breast cancers and they have identified specific cytological and morphological patterns that are consistently and well associated with the spectrum clinical presentations. The most common type of breast carcinoma is

invasive ductal carcinomas not otherwise specified (IDC-NOS) or of no special type (IDC-NST) (Narbe et al., 2014; Weigelt et al., 2010) which is diagnosed by exclusion and comprises of adenocarcinomas that are devoid of any adequate histological characteristics that may allow them to be classified as one of the specific subtypes of breast cancers (Lacroix-Triki et al., 2010).

Specific types of breast cancer account for up to 25% of all breast cancer cases and in the latest edition of the World Health Organization classification for breast cancer recognizes the existence of at least 17 distinct histological special types (Lacroix-Triki et al., 2010). It is worth noted that information on tumour grade and type supplement each other (Bombonati & Sgroi, 2011). Even though grade identifies prognostic subgroups among special types of breast cancer, some histological types of breast cancer that are made of poorly differentiated cells (high histological grade) may have a relatively good prognosis (e.g. medullary carcinomas) (Dinkel et al., 2000; Huober et al., 2012).

1.4 Morphogenesis of Normal Mammary Gland

Mammary glands are epidermal appendages that are hypothetically developed from the evolutionarily-ancient apocrine glands which were connected to the skin (Hens & Wysolmerski, 2005). The major function of the mammary gland is to supply nutrition for the young in the form of milk fat and protein (Kent et al., 2013; Tiede & Kang, 2011). Apart from that, there are other benefits that are provided by lactation, for instance the provision of immune factors that are secreted into the milk and the nurturing of mother-infant during breastfeeding might confer developmental benefits to the newborns (Noel-Weiss et al., 2010). The mammary gland is a unique secretory organ that consists of a number of dissimilar cell types: epithelial cells that form the ductal network of the gland; adipocytes, which comprise the fat pad and in which the ductal network is implanted; vascular endothelial cells, which make up the blood vessels; stromal cells, including fibroblasts; and a variety of immune cells (Howlin et al., 2006). The mammary gland consists of two main epithelial types: luminal and basal (Sopel, 2010). The basal epithelium consists of myoepithelial cells, whereas luminal epithelium forms the ducts and the secretory alveoli (Sopel, 2010; Van Keymeulen et al., 2011). These two types of epithelium form a bi-layered structure of simple epithelium that is surrounded by the fatty stroma (Sakakura et al., 2013; Sopel, 2010).

There are three main steps of mammary gland development, both in rodents and humans: embryonic, pubertal and adult (Van Keymeulen et al., 2011). Growth factors and hormones play fundamental roles in these different steps of normal mammary development and its antipode, breast cancer (Briskin & O'Malley, 2010). The mammary gland is an ideal tissue to study human developmental processes. In

the embryo, the cellular signaling pathways that stimulate/induce the formation of mammary placodes from the skin are yet to be fully elucidated (Sakakura et al., 2013). Besides that, similar mechanistic pathways have also been discovered in the developing stages of other anatomical appendages, such as teeth and feathers (Forsmanl & Schwertfegez, 2013), suggesting the crucial role they play. Once born, mammary development persists until puberty, during when extensive elongation of the ducts, accompanied by secondary branching, takes place. This provides a readily reachable system in which the study of branching morphogenesis is made feasible (Sakakura et al., 2013).

During pregnancy, mammary glands undergo further development which have these striking features; formation of tertiary branches, which end in alveolar buds and the quick proliferation of the luminal epithelium followed by subsequent differentiation and commitment to the secretory alveolar lineage (Forsmanl & Schwertfegez, 2013) (Figure 1.2). A lactogenic key occurs during late pregnancy that is accompanied by the appearance of the milk proteins, whey acidic protein (WAP) and α -lactalbumin, and by the formation of lipid droplets (Barbieri, 2013; Kommagani et al., 2013). Following lactation, elimination of the now surplus alveolar cells is accomplished by cell death (apoptosis). Post-lactational deterioration, or involution, is the most remarkable example of physiologically regulated apoptosis in an adult tissue (Kommagani et al., 2013).

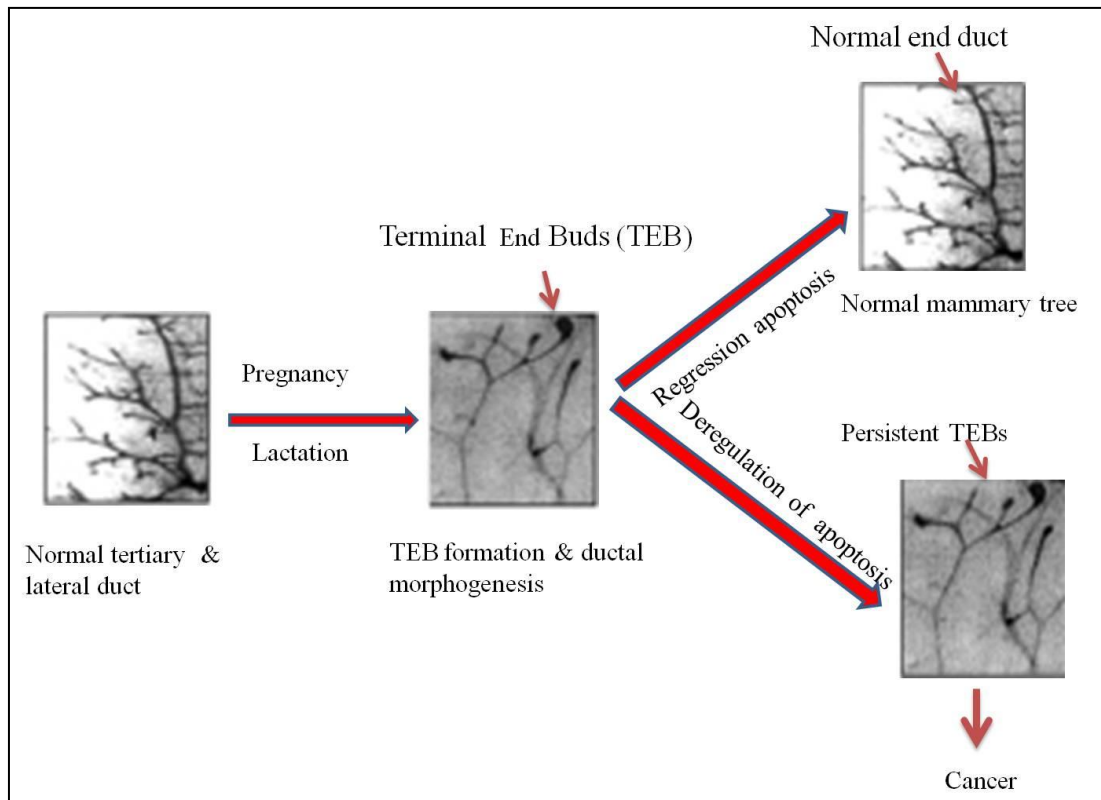


Figure 1.2 Schematic representation of various stages of mammary gland development (Forsmanl & Schwertfegerz, 2013).

1.5 1-Methyl-1-Nitrosourea (MNU) Induced Breast Cancer In Rats

The use of animal models in the study of carcinogenesis is cardinal in investigating the mechanisms of carcinogenic interactions because the implicating agents can be clearly defined. The murine breast cancer model is a commonly used model for human breast cancer because of the similarities in hormonal dependence histopathological characteristics and the ease of tumour induction by the easily available breast cancer-causing carcinogens such as 7,12-dimethylbenz[a]anthracene (DMBA) and 1-methyl-1-nitrosourea (MNU) (Imaoka et al., 2009; Medina, 2007; Nandi, 2006). Therefore, the two carcinogenic substances are considered good choices for the induction of cancers in most studies investigating mammary carcinogenesis and breast cancer therapeutics.

The features of MNU-induced and DMBA-induced models have been previously reviewed (Imaoka et al., 2014; Macejova & Brtko, 2001; Shirai et al., 1997). They are alike in terms of reliability of tumour induction, organ site specificity and production of tumours with varying hormone responsiveness (Tsubura et al., 2011). Both provide the means for studying the attributes of tumour initiation, promotion and progression even though carcinomas induced by either carcinogen can rarely metastasize.

In spite of such similarities, there are some notable differences that set these two murine breast cancer models apart. The MNU model is used for investigating mammary tumorigenesis induced by a direct acting carcinogen, whereas the DMBA model provides a platform for studying mammary tumorigenesis induced by a pre-carcinogen requiring enzymatic-metabolic activation (Shirai et al., 1997). The MNU induced mammary carcinomas have a more aggressive histological pattern compared to those induced by DMBA and MNU-induced tumours have a higher incidence of adenocarcinomas (Medina, 2007). Furthermore, MNU-induced tumors appear to be more estrogen-dependent compared to DMBA-induced tumours which is more dependent prolactin for tumor progression (Medina, 2007). Since this study aims to examine the effects of both rapamycin and PF4 on the most ubiquitously prevalent human breast cancer, the MNU-induced murine breast cancer model is chosen for this study.

The administration of MNU at a dose of 50 mg/kg body weight in rats aged 21 days has been shown to be a rapid method for inducing mammary tumour with higher production of premalignant lesions including intraductal proliferations (IDP)

and ductal carcinoma in situ (DCIS) than other methods (Choudhuri et al., 2012; Nandi, 2006; Shirai et al., 1997). This latter feature has proved the model to be useful in studying breast cancer carcinogenesis at its earliest stage.

The times to the first appearance of cancerous lesions are varied among the many types of pre-malignant and malignant lesions (Tsubura et al., 2011). For instance, IDP occurs 14 days post MNU induction, whilst the DCIS and adenocarcinomas appear 21 days post MNU-induction (Choudhuri et al., 2012). This model has been used widely as a preclinical *in vivo* model for evaluating the potential efficiency of an agent in breast cancer treatment. Again, based on these favourable characteristics, MNU-induced murine breast cancer model is deemed the most suitable model for this study.

1.6 Programmed Cell-Death

Generally, programmed cell-death (PCD) is the death of the cell in any types, it was determined by an intracellular program (Fuchs & Steller, 2011). PCD is confessed out in a structured process, which frequently intended superior during an organism's life-cycle (Ouyang et al., 2012). For example, the toes differentiation and fingers in an emerging human embryo occurs because cells between the fingers apoptose; the effect is that the digits are separate. PCD explores fundamental functions during both plant and metazoa (multicellular animals) tissue development (Walsh, 2014). Apoptosis and autophagy are both forms of programmed cell death, but necrosis is a non-physiological process that occurs as a result of infection or injury (Walsh, 2014). The other types of programme cell death were included cornification, mitotic catastrophe, anoikis, excitotoxicity, paraptosis, pyroptosis, pyronecrosis and entosis (Kroemer et al., 2005).

In 2005, the The Nomenclature Committee on Cell Death (NCCD) has formulated recommendations in the Cell Death and Differentiation (Kroemer et al., 2005). The NCCD main function was provided the forum in describing the distinct modalities of cell death are critically evaluated and recommendations on their definition and use are formulated, hoping that a non-rigid, yet uniform, nomenclature will facilitate the communication among scientists and ultimately accelerate the pace of discovery. The NCCD also provided an updated guideline on the cell death study.

1.6.1 Necrosis

‘Necrotic cell death’ or ‘necrosis’ is morphologically distinguished by an acquire in cell volume (oncosis), plasma membrane rupture, swelling of organelles and subsequent loss of intracellular contents. For years, necrosis have been considered simply as an accidental uncontrolled form of cell death, but facts are accumulating that the execution of necrotic cell death may be delicately modulated by a set of signal transduction pathways and catabolic mechanisms (Golstein & Kroemer, 2007). For instance, death domain receptors (e.g., TNFR1, Fas/CD95 and TRAIL-R) and Toll-like receptors (e.g., TLR3 and TLR4) have been shown to induce necrosis, in particular in the presence of caspase inhibitors. TNFR1-, Fas/CD95-, TRAILR- and TLR3-mediated cell death, seemingly depends on the kinase RIP1 (Mocarski et al., 2011) as this has been demonstrated by its knockout/knockdown and chemical inhibition with necrostatin-1 (Degterev et al., 2013). Although there is no comprehensive agreement on the use of this expression, some researchers have suggested the term ‘necroptosis’ to specify regulated (as opposed to accidental) necrosis. At a biochemical level, necroptosis may be defined as a type of cell death that can be avoided by inhibiting RIP1 (either through genetic or pharmacological methods) (Ofengeim & Yuan, 2013) which may represent a convenient means to discriminate between programmed and fortuitous forms of necrosis. Thus far, however, there is no consensus on the biochemical changes that may be used to unequivocally identify necrosis. In the absence of a common biochemical denominator, necrotic cell death is still largely identified in negative terms by the absence of apoptotic or autophagic markers, in particular when the cells undergo early plasma membrane permeabilization (as compared with its delayed

occurrence, which is associated with late-stage apoptosis). For these reasons, caution should be used in classifying particular cell death routines as necrotic.

1.6.2 Apoptosis

Apoptosis or programmed cell death (PCD) is an active, energy-dependent process of cell death which occurs during development, in response to certain physiologic stimuli and secondary to cell injury and stress (Elmore, 2007; Gewies, 2003; Giansanti et al., 2011). The purpose of this type of cell death is for regulating the removal of damaged and unwanted cells in discrete tissues, a critical function in embryonic development and normal tissue homeostasis. It differs from necrotic cell death because the damaged cells are eliminated by PCD in a fashion without eliciting intense inflammatory response (Ashkenazi & Salvesen, 2014).

The term apoptosis had been coined in order to explain the morphological processes principal to controlled cellular self-destruction which was first discovered by Kerr, Wyllie and Currie (Czabotar et al., 2014). Apoptosis is of Greek origin, meaning “falling off or dropping off”, in analogy to leaves falling off trees or petals dropping off flowers. This analogy emphasizes that the death of a living matter is an important and often a necessary part of the life cycle of any organism.

Apoptosis is an active and clearly-defined process which has monumentally contributed to multicellular organisms’s development and the regulation and preservation of the cell populations in tissues under physiological and pathological conditions. It should also be stressed that apoptosis is possibly the most common

form of programmed cell death, but other non apoptotic types of cell death might also be of biological significance (Portt et al., 2011).

Apoptosis is an orderly and tightly controlled series of events which culminates in coherent gene expression with specific proteomic signatures. It has a major function in normal growth and differentiation of organ systems and appears to be involved in a variety of human disorders (Delbridge et al., 2012).

There are two gene families which are critical in the control of apoptosis; interleukin-1-converting enzyme (ICE) family of cysteine proteases (caspases) and proto-oncogene Bcl-2-related genes. Both of these families are homologous to cell death genes in *Caenorhabditis elegans* (*C. elegans*) (Potts & Cameron, 2011). Proteolytic activity plays a special role in many apoptotic systems, the ICE family being of special importance, since it seems to be central in Fas-mediated and tumor necrosis factor (TNF)-induced apoptosis (Azahri & Kavurma, 2013; Waters et al., 2013).

New evidence suggests that Bcl-2 protein has two different functions: 1) as an ion channel protein and 2) as an adaptor/docking protein through its binding to several other proteins which are important in modulating apoptosis (Bortner & Cidlowski, 2014). However, the precise way in which these proteins modulate apoptosis remains unclear and conflicting theories have been proposed. Further, the gene product of Bcl-2 does not prevent apoptosis under all conditions (e.g., does not protect target cells from apoptosis induced by cytotoxic T cells) (Bagci et al., 2006).

Finally, genes involved in cellular differentiation and proliferation are also important in modulating the apoptotic process (e.g., the c-Myc, the p53, and the apoptosis suppressor gene A20). Both c-Myc and p53 are incriminated in the induction of apoptosis under certain conditions, whereas A20 is a cytokine-induced primary response gene involved in the inhibition of the apoptotic process (Portt et al., 2011).

1.7 Morphology And Biochemical Features

Apoptotic cells can be recognized by distinct morphological changes such as cell shrinkage, cellular deformation with the loss of contact with its neighbouring cells (Figure 1.3). Apart from those above, apoptotic cell chromatin condenses and marginates to the nuclear membrane with plasma membrane blebbing or budding, before culminating in cellular fragmentation and apoptotic bodies formation, a closely-compact membrane containing structure which is composed of cytosol, condensed chromatin, and organelles (Mariño et al., 2014). The apoptotic bodies are subsequently engulfed by macrophages and thus are removed from the tissue without causing an inflammatory response (Suzanne & Steller, 2013).

Those morphological changes are a consequence of characteristic molecular and biochemical events occurring in an apoptotic cell, most particularly the activation of proteolytic enzymes which eventually mediate the cleavage of DNA into oligonucleosomal fragments as well as the cleavage of a multitude of specific protein substrates which usually determine the integrity and shape of the cytoplasm or organelles (Suzanne & Steller, 2013). Apoptosis is in contrast to necrosis in which

the cells suffer a major insult, resulting in a loss of membrane integrity, swelling and disruption of the cells. During necrosis, the cellular contents are uncontrollably released into the cell's microenvironment, resulting in severe damage to the surrounding cells and a strong inflammatory response by the necrotic tissues (Table 1.1) (Nanji & Hiller-Sturmhöfel, 1997).

Table 1.1 Differential features of apoptosis and necrosis.

Differential features of apoptosis and necrosis	
Apoptosis	Necrosis
Affects single cell	Affects groups of neighboring cells
No inflammatory response	Significant inflammatory response
Cell shrinkage	Cell swelling
Membrane blebbing with maintained cellular integrity	Loss of membrane integrity
Increased mitochondria membrane permeability release of proapoptotic protein and formation of apoptotic bodies	Organelle swelling and lysosomal leakage
Chromatin condensation and non-random DNA fragmentation	Random degradation of DNA
Apoptotic bodies ingested by neighboring cells	Lysed cell ingested by macrophage.

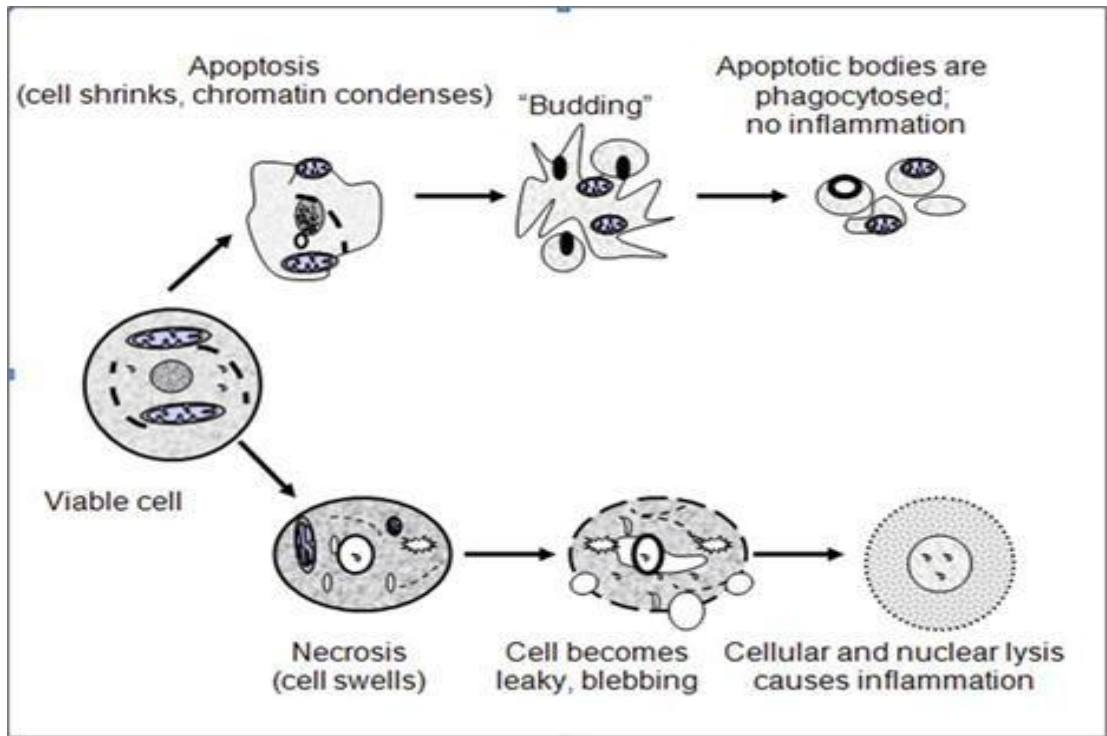


Figure 1.3 Morphological comparisons between apoptotic and necrotic cell deaths. Key features of apoptosis that includes cellular shrinking, chromatin condensation and margination at the nuclear periphery with the eventual formation of membrane-bound apoptotic bodies, comprising organelles, cytosol and nuclear fragments that are subsequently phagocytosed without triggering inflammatory processes. On the contrary, the necrotic cell swells and becomes leaky with the eventual disruption of membrane which results in the release of cellular contents into the surrounding tissue, triggering inflammation (Nanji & Hiller-Sturmhöfel, 1997).

Apoptotic cells usually display a distinctive constellation of biochemical modifications that underlie the structural pathology. Some of these features are shared by necrotic cells as well, but other alterations are more necrosis-specific. Caspases cleavage of the nuclear scaffold and cytoskeletal proteins (together with protein cross-linking) underlies the distinctive nuclear and cytoplasmic structural alterations solely seen in apoptotic cells. Caspase activity also triggers endonucleases (Ashkenazi & Salvesen, 2014).

Extensive protein cross-linking by transglutaminase activation converts cytoplasmic proteins into covalently linked shrunken shells that may break into apoptotic bodies (Szondy et al., 2011). Apoptotic cells demonstrates a characteristic feature of DNA break into large 50-kilobase to 300-kilobase pieces. Subsequently, there is internucleosomal cleavage of DNA into oligonucleosomes in multiples of 180 to 200 base pairs by Ca^{2+} - and Mg^{2+} - dependent endonucleases (Bortner et al., 1995). The fragments are visualizable by agarose gel electrophoresis as DNA ladders. Endonuclease activity also forms the basis for detecting cell death by cytochemical techniques that recognize the double-stranded DNA breaks. However, internucleosomal DNA cleavage is not specific for apoptosis (Nagata, 2000). Moreover, the “smear” pattern of DNA fragmentation thought to be indicative of necrosis may only be a late autolytic phenomenon, and typical DNA ladders can also be seen in necrotic cells as well (Widlak & Garrard, 2009).

Apoptotic cells have phosphatidylserine in the outer layers of their plasma membranes, the phospholipids having been “flipped” out from the inner layers. In some types of apoptosis, thrombospondin, an adhesive glycoprotein, is also expressed on the surfaces of apoptotic bodies (Hengartner, 2001). These alterations let the early detection of the dead cells by macrophages and adjacent cells for phagocytosis, without the discharge of proinflammatory cellular components. In this way, the apoptotic response disposes undesirable cells with minimal compromise to the surrounding tissue.

1.7.1 Mechanism Of Apoptosis Pathway

The apoptosis mechanisms are extremely multifarious and complicated, linking each key player into an energy-dependent cascade of molecular events (Figure 1.4). Currently, research shows that there are two main apoptotic pathways: the extrinsic or death receptor pathway and the intrinsic or mitochondrial pathway (Wong, 2011). Nevertheless, it is now verified that the two pathways are mutually linked and that a principal regulator in one pathway can also play a major part in the other pathway (Bagci et al., 2006; Prehn et al., 2013). Besides these two, there is also another pathway that involves T-cell mediated cytotoxicity and perforin-granzyme-dependent killing of the cells.

The perforin/granzyme pathway can induce apoptosis via either granzyme B or granzyme A. The extrinsic, intrinsic, and granzyme B pathways eventually converge on the same terminal apoptotic event in the form an execution pathway. This pathway is initiated by the cleavage of caspase-3 which leads to DNA fragmentation, degradation of cytoskeletal and nuclear proteins, cross-linking of proteins, formation of apoptotic bodies, expression of ligands for phagocytic cell receptors and finally uptake by phagocytic cells. The granzyme A pathway activates a parallel, caspase-independent cell death pathway via single stranded DNA damage (Martinvalet et al., 2005).

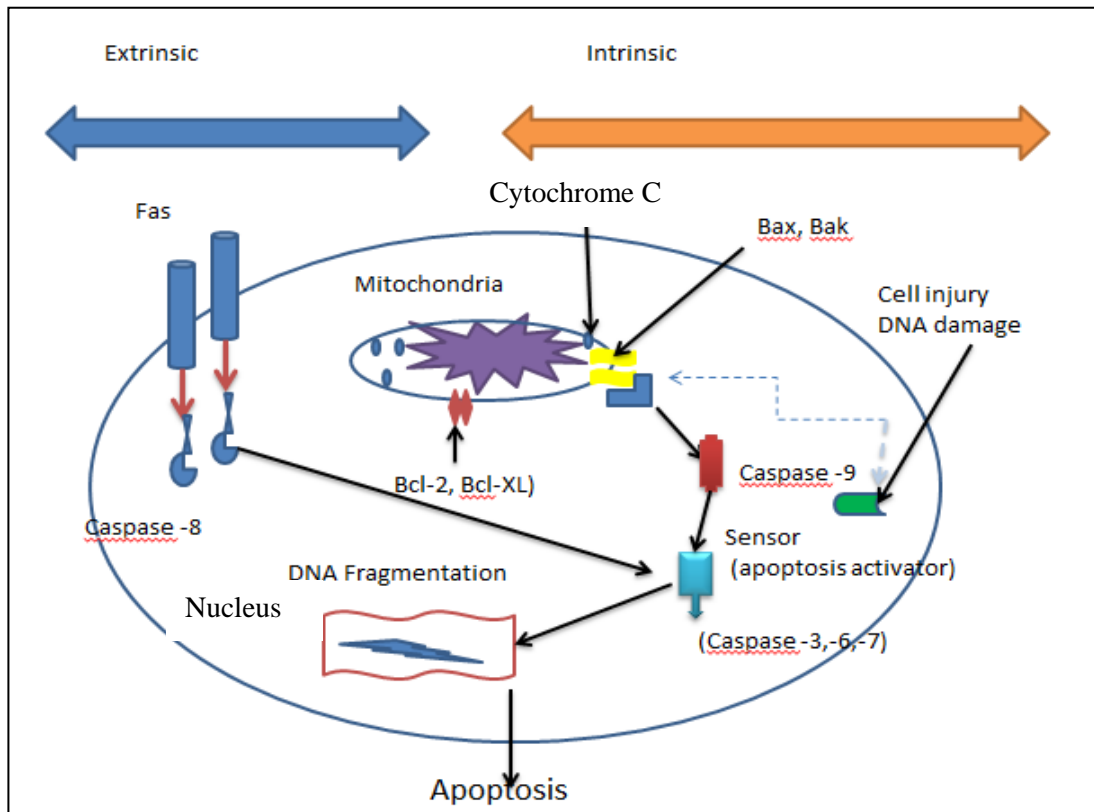


Figure 1.4 Schematic representation of apoptotic events (Dabbah & Rajei, 2013).

The major pathways of apoptosis are extrinsic and intrinsic as well as a perforin/granzyme pathway. Every pathway requires particular triggering signals to initiate an energy-dependent cascade of molecular events. Every pathway activates its own initiator caspase (8, 9, 10) which in turn will activate the executioner caspase-3. On the opposite, granzyme A pathway is executed in a caspase-independent style. The execution pathway results in typical cytomorphological features including cell shrinkage, chromatin condensation, formation of cytoplasmic blebs and apoptotic bodies and finally phagocytosis of the apoptotic bodies by adjacent parenchymal cells, neoplastic cells or macrophages (Ashkenazi & Salvesen, 2014).

1.7.1.1 Extrinsic Pathway (Death receptor)

The extrinsic pathways of apoptosis involve transmembrane ligand-death receptor interactions. These death receptors are genetically belonged to the tumour necrosis factor (TNF) receptor gene superfamily members (Hengartner, 2001; Wang et al., 2012). TNF receptor family members share similar cysteine-rich extracellular domains and have a cytoplasmic domain of about 80 amino acids known as death domain (Aggarwal et al., 2012). This death domain plays an important role in transmitting the death signal from the cell surface to the intracellular signaling pathways. Among the best-characterized ligands and their corresponding death receptors include fatty acid synthetase ligand (FasL) / fatty acid synthetase receptor (FasR), Tumour necrosis factor alpha (TNF- α) / type 1 TNF receptor (TNFR1), Apo3 ligand (Apo3L) / Death receptor 3 (DR3), Apo2 ligand (Apo2L) /DR4 and Apo2L/DR5 (Dickens et al., 2012).

The sequences of events that describe the extrinsic pathway of apoptosis are best illustrated with the FasL/FasR and TNF- α /TNFR1 models (Rubio-Moscardo et al., 2005). In these models, there is a clustering of receptors when homologous trimeric ligands bind to them. Cytoplasmic adapter proteins are then recruited after successful binding, which possess corresponding death domains that bind with the death receptors. Accordingly, the binding of Fas ligand to Fas receptor to the adapter protein Fas-associated death domain (FADD) and the binding of TNF ligand to TNF receptor results in the binding of the adapter protein TNF receptor-associated death domain (TRADD) with

recruitment of FADD and RIP (Schneider & Tschopp, 2000). FADD then associates with procaspase-8 via dimerization of the death effector domain. At this stage, a death-inducing signaling complex (DISC) is produced, an essential component in the auto-catalysis of procaspase-8 (Kischkel et al., 1995).

Once caspase-8 is activated, the execution phase of apoptosis is thus activated. Death receptor-mediated apoptosis can be inhibited by a protein called c-FLIP which will bind to FADD and caspase-8, rendering them ineffective (Chang et al., 2002; Scaffidi et al., 1999). Another potential target for apoptosis inhibition involves a protein called Toso, which has been shown to block Fas-induced apoptosis in T cells via inhibition of caspase-8 processing (Hitoshi et al., 1998; Song & Jacob, 2005).

1.7.1.2 Intrinsic Pathway (Mitochondrial-dependent pathway)

The intrinsic pathway is regulated at the mitochondrial level and responsive to both extracellular stimuli and internal insults such as DNA damages (Elumalai et al., 2012). This pathway is set off via alterations in mitochondrial membrane potential and increased permeability of the membrane, resulting in the leakage of cytochrome *c*, a protein important to mitochondrial respiration. In the cytosol, cytochrome *c* binds to apoptosis activating factor (Apaf-1) to form a complex known as apoptosome, which in turn activates caspase-9 (Rogalska et al., 2013). At this juncture, if the balance between pro-apoptotic and inhibitory control is tipped in favor of cell death, the caspase cascade is initiated resulting in the withering of the cells (Tait & Green, 2010).

1.8 Bcl-2 Family

The Bcl-2 family proteins play a critical role in apoptosis regulation (Shamas-Din et al., 2013). Changes in the levels or bioactivities of these proteins are necessary for diverse physiological processes where programmed cell death are required for the maintenance and maturation of normal anatomical and physiological development such as during fetal growth, haematopoietic and immune cell differentiation, oogenesis, mammary gland involution and normal cell turnover in the epidermis, gut and other tissues (Carson & Ribeiro, 1993; Chipuk et al., 2010; Kerr et al., 1972). Moreover, pathological alterations in the expression of Bcl-2 proteins family have been identified as one of the main culprits in carcinogenesis, autoimmunity, immunodeficiency, heart failure, stroke and other pathologies (Favaloro et al., 2012; Kelly & Strasser, 2011; Nagata, 2010; Papathanasiou et al., 2012). Consequently, methods for assessing the relative levels and bioactivities of Bcl-2 proteins family are extremely important to scientists in a broad range of disciplines.

The Bcl-2 oncoprotein is an inhibitor of apoptotic cell death (Ola et al., 2011). Many experiments which involve cells that are genetically transfected with Bcl-2 mutations have shown that elevated levels of this protein can protect a wide variety of cells from various cell death stimuli ranging from growth factor withdrawal and cytotoxic lymphokines to virus infection and DNA-damaging, anticancer drugs and radiation (Fuchs & Steller, 2011). The 26-kD Bcl-2 resides on the cytoplasmic surface of the mitochondrial outer membrane,