

“I hereby declare that I have read this thesis and in my opinion this thesis is sufficient in terms of scope and quality for the award of the degree of Master of Engineering (Electrical)”

Signature :
Name of Supervisor I : DR. YEONG CHE FAI
Date : 27 MAY 2018

Signature :
Name of Supervisor II : DR. EILEEN SU LEE MING
Date : 27 MAY 2018

UPPER EXTREMITY ASSESSMENT AND REHABILITATION SYSTEM FOR
STROKE PATIENTS

SIM LEE SEN

A thesis submitted in fulfilment of the
requirements for the award of the degree of
Master of Engineering (Electrical)

Faculty of Electrical Engineering
Universiti Teknologi Malaysia

MAY 2018

Dedicated to all readers, especially you

ACKNOWLEDGEMENT

I would like to express my most sincere gratitude to my supervisor, Dr. Yeong Che Fai and co-supervisor, Dr. Eileen Su Lee Ming, for inspiring mentorship and giving me enormous support in my MSc study and research. They patiently encouraged me how to be proactive at my work and approach scientific challenges as a researcher.

It is with immense gratitude that I acknowledge the helping and guidance of the physiotherapists from National Stroke Association of Malaysia (NASAM) and Persatuan Kebajikan Amal Lexin. Without them, I would not be able to achieve the objectives of the study. I would also like to thank CREST (Collaborative Research in Engineering, Science & Technology) for financial support. The research scholarship provided by CREST has greatly reduced my financial burden.

In addition, I would like to specially thank Dr. Khor Kang Xiang, Dr. Hisyam Abdul Rahman, Mr. Yong Bang Xiang, and Mr. Chew Zhen Shan from Universiti Teknologi Malaysia (UTM) for their kind assistance in providing technical support throughout my research.

Last but not least, my sincere appreciation goes to my family for allowing me fully pursue my ambition without any complaints. Thank you so much for taking the time to read my thesis. I hope my research can guide you to achieve your goal.

ABSTRACT

Stroke is the leading cause of disabilities worldwide. Upper extremity impairments are very common after stroke. To support the recovery process, conventional assessment methods such as Fugl-Meyer Assessment (FMA) and Motor Assessment Scale (MAS) are widely used to assess motor performance of stroke patients. However, the assessments face some limitations such as being subjective and time-consuming. Many research have been done to solve the limitations of conventional assessments by using motion capture sensor or robotics for objective assessment. The main objective of this research is to design and develop a vision-based automated rehabilitation and assessment system to assess upper extremity of stroke patients. A Kinect-based system was used as an upper extremity stroke rehabilitation assessment system with isolated training movement namely Shoulder Abduction-Adduction (SAA). Three experiments were conducted involving a total of eight healthy subjects and three stroke patients. A total of six out of nine collected features have been proved being significantly different using t-test method. The suitable features were selected using three different features selection methods, namely Relief-F, Principal Analysis Component, and Correlation-based Feature Selection. These three feature sets were then trained with four different classifiers: Artificial Neural Network (ANN), Support Vector Machine (SVM), Random Tree and Random Forests in order to achieve the best predictive model. With a total of three feature sets and four classifiers, a total of 12 predictive models were constructed in this thesis. The 12 models were evaluated based on correlation-analysis. The result shows that the combination of ReliefF and SVM achieved accuracy of 91.04%, highest correlation coefficient of 0.9929 and lowest root mean square error of 0.1183 among all the constructed models.

ABSTRAK

Strok ialah penyebab utama kecacatan di seluruh dunia. Kemerosotan ekstrimiti atas sangat biasa selepas strok. Untuk mempercepatkan proses pemulihan, kaedah penilaian konvensional seperti Penilaian Fugl-Meyer dan Skala Penilaian Motor digunakan secara meluas untuk menilai prestasi motor pesakit strok. Bagaimanapun, kaedah penilaian ini masih menghadapi beberapa batasan iaitu bersifat subjektif dan memakan masa. Banyak penyelidikan telah dilakukan untuk menyelesaikan batasan tersebut dengan menggunakan sensor tangkapan gerakan atau sistem robotik untuk penilaian objektif. Objektif utama penyelidikan ini adalah untuk mereka bentuk dan membangunkan sistem pemulihan dan penilaian automatik berasaskan sistem penglihatan untuk menilai ekstrimiti atas pesakit strok. Sistem berasaskan Kinect digunakan sebagai sistem pentaksiran pemulihan strok dengan gerakan terpecil iaitu *Shoulder Abduction-Adduction* (SAA). Terdapat tiga eksperimen telah dijalankan dan melibatkan lapan subjek yang sihat dan tiga pesakit strok. Sebanyak enam daripada sembilan ciri yang dikumpulkan telah terbukti mempunyai perbezaan ketara dengan menggunakan kaedah ujian-t. Ciri-ciri yang sesuai dipilih dengan tiga kaedah pemilihan ciri yang berbeza iaitu *ReliefF*, *Principal Component Analysis*, dan *Correlation Feature Selection*. Set tiga ciri ini kemudian dilatih dengan empat pengelas berbeza: Rangkaian Neural Buatan, *Support Vector Machine* (SVM), *Random Tree* dan *Random Forests* untuk mencapai model ramalan yang terbaik. Dengan sejumlah tiga set ciri dan empat pengelas, sebanyak 12 model ramalan telah dibina dan dinilai berdasarkan analisis korelasi. Keputusan menunjukkan bahawa kombinasi *ReliefF* dan SVM mencapai ketepatan sebanyak 91.04%, pekali korelasi tertinggi sebanyak 0.9929 dan ralat min punca kuasa dua terendah iaitu sebanyak 0.1183 di kalangan semua model yang dibina.

TABLE OF CONTENTS

CHAPTER	TITLE	PAGE
	DECLARATION	ii
	DEDICATION	iii
	ACKKNOWLEDGEMENT	iv
	ABSTRACT	v
	ABSTRAK	vi
	TABLE OF CONTENTS	vii
	LIST OF TABLES	xii
	LIST OF FIGURES	xiv
	LIST OF ABBREVIATIONS	xvii
	LIST OF SYMBOLS	xix
	LIST OF APPENDICES	xx
1	INTRODUCTION	1
	1.1 Problem Backgrounds	1
	1.2 Conventional Rehabilitation Program	3
	1.2.1 Motor Assessment Scale (MAS)	3
	1.3 Current Technology Solutions and Limitations	4
	1.4 Problem Statement	4
	1.5 Research Objectives	6
	1.6 Research Scopes	6
	1.7 Thesis Outline	7
2	LITERATURE REVIEW	9
	2.1 Introduction	9

2.2	Upper Extremity	9
2.2.1	Shoulder Abduction-Adduction (SAA)	9
2.2.1.1	Shoulder Range of Motion (SROM)	10
2.3	Vision-based system for Upper Extremity Rehabilitation	10
2.3.1	Virtual Reality Game Design for Training	11
2.3.2	Related Works on Virtual Reality Game- based Rehabilitation Using Kinect Sensor	13
2.4	Predictive Model for Automated Upper Extremity Assessment	17
2.4.1	Data Preprocessing	17
2.4.2	Feature Reduction and Selection	18
2.4.2.1	Relief-F	19
2.4.2.2	Principal Component Analysis (PCA)	19
2.4.2.3	Correlation-based Feature Selection (CFS)	20
2.4.3	Modelling using Machine Learning	20
2.4.3.1	Artificial Neural Network (ANN)	21
2.4.3.2	Support Vector Machine (SVM)	22
2.4.3.3	Random Tree	22
2.4.3.4	Random Forests	23
2.4.4	Related Works on Predictive Models for Assessment Using Machine Learning Algorithms	23
2.5	Summary	27
3	METHODOLOGY	28
3.1	Introduction	28
3.2	Methodology	28
3.2.1	Data Collection Method	30
3.2.2	System Architecture	32
3.2.3	Hardware Implementation	33

3.2.3.1 Microsoft Kinect Sensor	33
3.2.3.2 Hardware Setup	34
3.2.4 Software Implementation	37
3.2.4.1 Depth Image Processing	38
3.2.4.2 Skeletal Tracking	39
3.2.4.3 Upper Extremity (UE) Movement Measurement	41
3.2.4.4 Graphical User Interface (GUI)	42
3.2.5 Pilot Study Protocol	44
3.3 Pilot Study I: Usability Evaluation of Task-Specific Interactive Game-Based Virtual Reality Kinect System for Stroke Patients	46
3.3.1 Features of Module 1.0	46
3.3.1.1 Manual Adjustment of Difficulty Level	48
3.3.1.2 Shoulder Abduction-adduction (SAA)	48
3.3.2 Experiment Setup	49
3.3.2.1 Subjects	49
3.3.2.2 Protocol	49
3.3.3 Data Analysis	50
3.4 Pilot Study II: Motion Quality Evaluation of Shoulder Abduction-adduction after Stroke	51
3.4.1 Features of Module 2.0	52
3.4.1.1 Automatic Adjustment of Difficulty Level	53
3.4.1.2 Shoulder Abduction-adduction (SAA)	54
3.4.2 Experiment Setup	56
3.4.2.1 Subjects	56
3.4.2.2 Protocol	57
3.4.3 Data Analysis	59
3.5 Predictive Model for Upper Extremity Assessment after Stroke by Using Machine Learning	60
3.5.1 System Overview	61

	3.5.2 Feature Reduction and Selection	62
	3.5.3 Classification	63
	3.6 Discussion	64
	3.7 Summary	66
4	RESULTS AND DISCUSSION	67
	4.1 Introduction	67
	4.2 Pilot Study I: Usability Evaluation of Task-Specific Interactive Game-based Virtual Reality Kinect System for Stroke Patients	67
	4.2.1 Kinematic Analysis between Task Daily Setting and Task Weekly Setting	68
	4.2.1.1 Range of Motion (ROM)	68
	4.2.1.2 Hit Target Score	69
	4.2.1.3 Reaction Time	70
	4.2.2 Discussion	72
	4.3 Pilot Study II: Motion Quality Evaluation of Shoulder Abduction-adduction after Stroke	74
	4.3.1 Comparison of Kinematic Variables between Healthy Subjects and Stroke Patients	74
	4.3.1.1 Movement Angle	75
	4.3.1.2 Movement Accuracy	76
	4.3.1.3 Movement Time and Velocity	77
	4.3.1.4 Movement Strategy	78
	4.3.2 Discussion	79
	4.4 Predictive Model for Upper Extremity Assessment after Stroke by Using Machine Learning	80
	4.4.1 Feature Reduction and Selection	81
	4.4.2 Classification	83
	4.4.3 Discussion	87
	4.5 Summary	89

5	CONCLUSION AND FUTURE WORK	91
	5.1 Conclusion	91
	5.2 Contributions	92
	5.3 Suggestions for Future Work	94
	REFERENCES	95
	Appendix A-D	105-114

LIST OF TABLES

TABLE NO.	TITLE	PAGE
2.1	Overview of upper limb virtual reality game-based rehabilitation related work using Kinect sensor	14
2.2	Overview of predictive models for assessment related work using Machine Learning Algorithms	24
3.1	Overview of software implementation	37
3.2	Demographic characteristic of the recruited patients	49
3.3	Increasing level of the difficulty	54
3.4	Demographic characteristic of the healthy subjects	57
3.5	Demographic characteristic of the recruited patients	57
3.6	Summary of physiotherapists' general requirements from interview	65
4.1	Comparison of average shoulder range of motion to complete the tasks in both settings	71
4.2	Comparison of average hit target score to complete the tasks in both settings	71
4.3	Comparison of average reaction time to complete the tasks in both settings	71
4.4	Correlation coefficient between two kinematic variables to complete the task	72
4.5	Summary of the T-test results in the Module 2.0	79
4.6	Raw data of the samples	81
4.7	Summary of the results of different feature selection for Module 2.0	83

4.8	Combination of feature selection methods and machine learning models	84
4.9	Classifier accuracy with selected feature subset using Relief-F	86
4.10	Classifier accuracy with selected feature subset using PCA	86
4.11	Classifier accuracy with selected feature subset using CFS	86
4.12	Comparison of classifier accuracy with all features and with selected feature subset using Relief-F	88

LIST OF FIGURES

FIGURE NO.	TITLE	PAGE
1.1	Illustration of the ischemic and haemorrhagic stroke	1
1.2	The annual mortality rate of ischemic stroke by sex over a lifetime in Malaysia	2
2.1	Illustration of shoulder abduction-adduction movement	10
2.2	Relationship between the skill and difficulty level that relate to emotional state	13
2.3	Illustration of the flow of predictive model development	17
2.4	Illustration of classifier concept	21
2.5	Architecture of a typical ANN	21
2.6	Concept of linear SVM and non-linear SVM	22
2.7	Illustration of decision tree model	23
3.1	Overview of research methodology	29
3.2	Demonstration of the system with the rehabilitation centre	31
3.3	Overview of the procedure of data collection method	31
3.4	Block diagram of the system	32
3.5	(a) Kinect coordinate system, (b) Kinect component	33
3.6	Screenshot of RGB-D image captured by Kinect sensor. (a) RGB image, (b) Raw Depth image (IR image)	34
3.7	Overview of hardware setup. (a) aluminium profile, (b) TV mount and bracket, (c) Kinect sensor mount, (d)	35

	Kinect sensor, (e) monitor, (f) Intel Core i5 3210M Processor	
3.8	Top view of sensor configuration	36
3.9	Experiment setup with patient from NASAM, KL	36
3.10	Flow chart of sensor data processing	37
3.11	Depth and player index bits	38
3.12	Screenshot of (a) raw depth image, and (b) processed depth image with player indexing	38
3.13	Finding of the player in real world	39
3.14	(a) Illustration of 20 nodes on the human body, (b) screenshot of processed depth image with detected nodes.	40
3.15	Example of calculating the ROM of the SAA	41
3.16	ROM measurement in coding	42
3.17	Examples of output of angle computation	42
3.18	Animation sprite in tabular form	43
3.19	Graphical User Interface (GUI) developed using C# programming. (a) Module 1.0 (see details in Section 3.3), (b) Module 2.0 (see details in Section 3.4)	44
3.20	Overview of pilot study protocol	45
3.21	Graphical user interface (GUI) of the Module 1.0	46
3.22	Performance feedback of stroke patients	47
3.23	Example of how to play	48
3.24	Summary of pilot study protocol with different training schedule	50
3.25	Graphical User Interface (GUI) of Module 2.0	52
3.26	Flow diagram of automatic difficulty level adjustment of the module 2.0	54
3.27	Evolution of avatar's moving path from (a) Module 1.0 –linear path to (b) Module 2.0 – circular path	55
3.28	Summary of the pilot study protocol for motion quality evaluation of SAA movement	58
3.29	Comparison of the MAS score between healthy subjects (H) and stroke patients (S1, S2, and S3)	60

3.30	Flow chart of data analysis algorithm	62
3.31	Summary of feature reduction	63
3.32	Summary of classification models	64
3.33	Summary of overall interview	66
4.1	Comparison of average shoulder range of motion between two settings. (A) task daily for 20-min (B) task weekly for 20-min	68
4.2	Comparison of average hit target score between two settings. (A) task daily for 20-min (B) task weekly for 20-min	69
4.3	Comparison of average reaction time between two settings. (A) task daily for 20-min (B) task weekly for 20-min	70
4.4	Movement angle in healthy group and experimental group (a) Shoulder ROM (b) Elbow ROM	75
4.5	Movement accuracy in healthy group and experimental group (a) Path Ratio and (b) Target Reached	76
4.6	Movement time and velocity in healthy group and experimental group (a) Reaction Time, (b) Reaching Movement Time, (c) Stability Time and (d) Peak Velocity	77
4.7	Time to Peak (TPV) in healthy group and experimental group	78
4.8	Reduction rate among four different feature selections	83
4.9	Comparison of correlation coefficient of different models on Module 2.0	85
4.10	Weight attributes ranked by Relief-F	88

LIST OF ABBREVIATIONS

ADL	-	Activities of daily living
ANN	-	Artificial Neural Network
AR	-	Augmented Reality
AROM	-	Active range of motion
ASAP	-	Accelerated Skill Acquisition Program
CFS	-	Correlation-based Feature Selection
CNS	-	Central nervous system
CoM	-	Center of mass
EROM	-	Elbow range of motion
F	-	Female
FCBF	-	Fast Correlation Based Filter
FIM	-	Functional Independence Measure
FM-UE	-	Fugl-Meyer Upper Extremity Scale
GUI	-	Graphical User Interface
HAMRR	-	Home-based Adaptive Mixed Reality Rehabilitation
HRQOL	-	Health-Related Quality of Life
HSA	-	Hospital Sultan Aminah
HTS	-	Hit target score
IR	-	Infrared
L	-	Left
M	-	Male
MAE	-	Mean absolute error
MAS	-	Motor Assessment Scale
NASAM	-	National Stroke Association of Malaysia
NS	-	Non-significant difference

NUI	-	Natural User Interface
OpenNI	-	Open Natural Interaction
PCA	-	Principal Component Analysis
PR	-	Path ratio
PROM	-	Passive range of motion
PV	-	Peak velocity
QoM	-	Quality of Movement
R	-	Right
RMSE	-	Root mean square root
RMT	-	Reaching movement time
ROM	-	Range of Motion
RT	-	Reaction time
S	-	Subject
SAA	-	Shoulder abduction-adduction
SDK	-	Software development kit
SG	-	Savitzky-Golay
SROM	-	Shoulder range of motion
ST	-	Stability time
STD	-	Standard deviation
SVM	-	Support Vector Machine
TPV	-	Time to peak velocity
TR	-	Target reached
UE	-	Upper extremity
VR	-	Virtual reality
WMFT	-	Wolf Motor Function Test

LIST OF SYMBOLS

r	-	Correlation coefficient
W_i	-	Weight of the i^{th} feature
M_S	-	Heuristic “merit” of a feature subset
rcf	-	Mean feature-class correlation
rff	-	Average feature-feature inter correlation
W_r	-	Width vector of player real width
W_p	-	Width vector of player pixel
α	-	Angle of shoulder
$^\circ$	-	Degree of angle
%	-	Percentage rate
s	-	Time in second
mm/s	-	Instantaneous velocity in millimeters per second
K	-	K-fold cross validation

LIST OF APPENDICES

APPENDIX	TITLE	PAGE
A	List of Publications	105
B	Survey Sheets (Physiotherapists)	106
C	Motor Assessment Scale (MAS) Form	108
D	Instantiate Skeleton Tracking Algorithm Code	114

CHAPTER 1

INTRODUCTION

1.1 Problem Backgrounds

Stroke is defined as a neurological deficit of cerebrovascular commonly caused by central nervous system (CNS) infarction. CNS infarction occurs when a blockage of blood flow in the arteries to the brain [1]. Insufficient blood flow to the brain will lead to oxygen deprivation and then to cell death. There are two main types of stroke, namely ischemic stroke (caused by blocked artery) and hemorrhagic stroke (bursting of a blood vessel) [2]. According to the health report, about 80% strokes are ischemic while 20% strokes are hemorrhagic [3]. Figure 1.1 shows the illustration of the ischemic and hemorrhagic stroke.

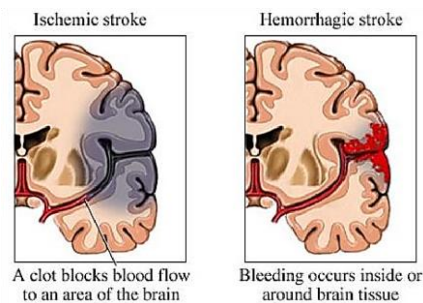


Figure 1. 1 Illustration of the ischemic and hemorrhagic stroke [4]

Stroke is a non-negligible global health problem. In Malaysia, stroke was ranked as the third leading cause of mortality for males and second for females in 2009 [5]. The mean age of stroke onset in Malaysia was between 54.5 and 62.6 years old. Figure 1.2 shows the annual mortality rate of ischemic stroke by sex over a lifetime in Malaysia. According to the Global disease burden study, Malaysia women encountered the highest mortality rate from ischemic stroke at age above 80 years old [6]. The peak of mortality rate for Malaysia women was higher than the Malaysia men.

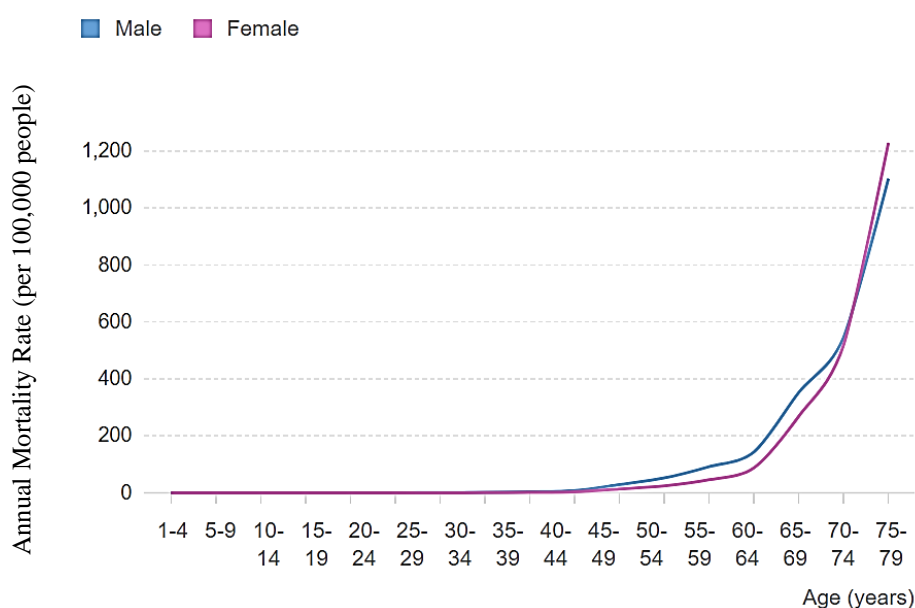


Figure 1. 2 The annual mortality rate of ischemic stroke by sex over a lifetime in Malaysia [6]

Those who survived after a stroke are commonly suffered with severe motor impairment. Upper extremity disability is one of the most significant motor deficits after a stroke [7] [8]. Loss of upper extremity motor function after stroke results in decreasing the level of independence with the activities of daily living (ADL) such as eating, bathing, dressing, toileting etc. From the research study, stroke patients today were discharged from hospital to home more quickly than in the past due to shifting economic realities [9]. Stroke rehabilitation is increasingly being shifted to an outpatient setting such as rehabilitation center or at home. Stroke patients have to continue to regain the motor function skills by taking expensive outpatient therapy [10]. Therefore, comprehensive stroke rehabilitative service has been shown to be cost-effective and effective intervention for patients.

1.2 Conventional Rehabilitation Program

In current clinical evaluation of upper extremity (UE) impairment after stroke, the functional performance of UE is accessed by using standardized clinical outcome measures [10], such as Motor Assessment Scale (MAS) and Fugl-Meyer Upper Extremity Scale (FM-UE). MAS [11] is one of the most common performance-based scale that accessed in local rehabilitation centers. For example, Hospital Sultan Aminah (HSA) [12], National Stroke Association of Malaysia (NASAM), and Persatuan Kebajikan Amal Lexin. MAS is defined and recommended to access everyday motor function in stroke patients. However, most of the clinicians cannot access the patients daily due to the large population of patients that limited the amount of time intervention between the clinicians and the patients [13]. Other than that, current clinical assessment method is lacking of objective assessment [14]. Objective assessment is independent of the observation of clinician. The assessment is done by measuring metric using devices or sensors. In contrast, subjective assessment is highly dependent on the observation of the clinician based on their experience. For example, the performance rating of the Motor Assessment Scale (MAS) is dependent on the observer as detailed in Appendix C.

1.2.1 Motor Assessment Scale (MAS)

The Motor Assessment Scale (MAS) is a task-oriented approach that was developed to access the stroke patient's ability of movement every day. MAS consists of eight criteria (items) for scoring. There are supine to side lying onto intact side, supine to sitting over side of bed, sitting to standing, balance sitting, walking, upper arm function, hand movements and advanced hand activities. Each item is recorded on a scale of 0 to 6. The total range of score for MAS is from 0 to 48 while range of score for upper extremity MAS (UL-MAS) is from 0 to 18. The higher the score represents the better the motor function performance. The scale has been shown to have an inter and intra reliability of $r=0.95$ and $r=0.98$ respectively [12]. From the studies, it reported the administration times ranging is from 15 to 60 minutes.

1.3 Current Technology Solutions and Limitations

Motion capture is an important element of developing an autonomous robot to resolve the limitations of conventional therapy [15]. It refers to the process of recording the movement of the patients. Many researches have been done to develop a robotic system coupled with motion sensors to measure the patient's abilities objectively [16]. Robot-assisted therapy able to provide high intensity, repetitive, consistent treatment and task-specific for efficient recovery of the motor function. Motion capture system can be defined by either optical tracking system, inertial wearable sensors or video-based system (marker-less sensors). Optical tracking system is capable of providing high precision data and retrieving body information data such as velocity, distance and joints angle. It required a huge space to setup the complete equipment with markers or sensors attached to the patient. Inertial wearable sensors consisting of accelerometers, gyroscopes and magnetic sensors placed on specific body segments such as wrist, arm or trunk to track the kinematic movement. Accumulative error arises while estimating the position by integrating accelerations or angular velocity [15]. Video-based system used to track the body movement without requiring any markers to attach to the body segments. It is popular with massive potential in research area due to its low costs and easy to use which suitable for physiotherapist and families to monitor the patient's performance either in clinical center or home.

Virtual reality game incorporated with motion capture system has emerged as a new approach in stroke rehabilitation and assessment [17]. It provides the advantage of practicing exercises with visual and audio feedback which may encourage a higher number of repetitions of the exercise than conventional therapy.

1.4 Problem Statement

The major issues faced by current rehabilitation program are the limited availability of physiotherapists for therapy [18], repetitiveness of the therapy [19],

subjective assessment [14] and limited amount of time intervention between clinicians and patients due to high medical cost [13]. Normally 1 physiotherapist has to assist up to 10 stroke patients during each training session. This phenomena will result in decreasing the effectiveness of physical therapy. Many robotic rehabilitation system have been developed to reduce the burden of the physiotherapists during rehabilitation program. The use of vision based system is found to be effective for rehabilitation therapy after a stroke, but assessment using these types of devices is still at research level. Also, therapists are still required to spend much time in setting up the system and monitoring the patients.

Current motor rehabilitation after stroke emphasizes and highlights the importance of repetitive functional training and task specific training [20][21]. Repeated practice of specific task (e.g., lifting cup, combing hair, answering telephone etc.) is a goal-directed treatment approach used to improve the stroke recovery rate [22]. Combining of task-oriented and repetitive training show to be greater improvement and effective than non-specific repetitive training alone [23][24]. Research studies have shown that the robotic rehabilitation of upper extremity function can provide high intensity repetitive movement therapy and increase the performance of upper extremity than conventional therapy [25]. However, repeating the same exercises may lead to stroke patients' lack of motivation on the therapy process [26]. Lack of motivation may resulting in delayed physical recovery [27]. As a solution, virtual reality game incorporated with vision based system has shown the potential to enhance the motivation of the patients on the therapy process. However, commercial virtual reality game is not so suitable for most of the patients due to the high difficulty level. Therefore, development of a rehabilitation game is highly recommended to provide adaptable difficulty level for stroke patients and maintain their enjoyment in virtual reality training.

In order to overcome the subjective assessment, many researches have been done in developing an automated assessment system by using machine learning algorithm. However, most of the studies is only focus on assessment, it would be good if can integrate the assessment with the virtual reality training system. Therefore, a better solution for assessment model using low cost vision-based system is highly needed.

1.5 Research Objectives

This research aims to investigate the feasibility of predictive modelling in assessing Quality of Movement (QoM) of stroke survivors via the following objectives:

1. To design and develop an objective vision-based upper extremity assessment system which able to integrate with the virtual reality training system.
2. To investigate the suitable kinematic variables that can be used for classification of stroke performance.
3. To evaluate suitable classifier and combination of input features for classifying stroke performance of chronic stage stroke patients.

1.6 Research Scopes

The aim of this study is to design and implement the virtual reality training system for use in automated upper extremity assessment after stroke.

The upper extremity assessment predictive model is developed to identify the kinematic variables to evaluate motion quality of patients. The system is successfully tested by healthy subjects and stroke patients. The inclusion criteria for the stroke patients allowed chronic patients only due to the limited number of stroke patients available. The conventional assessment scale that is being studied in this work is the Motor Assessment Scale (MAS) because only this scale is being used in NASAM and Persatuan Kebajikan Lexin.

Kinematic variables with significance difference between the healthy subjects and stroke patients are applied as features in upper extremity assessment model. The features are pre-processed using three different feature selection methods, which are Relief-F, CFS, and PCA. Then, predictive models are constructed based on four different modelling methods (classifiers), namely ANN, SVM, Random Tree and Random Forests. The designed predictive model will be evaluated and selected based on its model correlation coefficient and model accuracy.

The virtual reality rehabilitation system was designed and developed using Microsoft Visual Studio with support of XNA Game Studio. The subjects' data were collected using Kinect-based sensor. Data analysis was carried out using MATLAB and Waikato Environment for Knowledge Analysis (WEKA) software.

1.7 Thesis Outline

This thesis consists of five chapters to detail the work done throughout the research. Chapter 1 contains general information regarding the motivation based on background of studies, problem statements, research objectives and research scopes.

Chapter 2 presents the literature review of vision-based technology that used for upper extremity training and assessment after stroke. This chapter explained in details about the previous study on stroke, stroke assessment methods, and assessment models.

Chapter 3 presents the research methodology of the research study. This chapter details the study design and interviewing, hardware implementation, software implementation and how the pilot study protocol conducted. In the subsequence chapter, it presents the methods of pilot study I, pilot study II and development of predictive model for upper extremity after stroke. In pilot study I, it aims to evaluate the usability of task-specific interactive game-based virtual reality UE-ARM for stroke patients. The pilot study was conducted with two chronic patients to investigate

appropriate upper extremities training schedule and evaluate the usability of the developed task-specific interactive game-based virtual reality UE-ARM. In pilot study II, it aims to evaluate the motion quality of shoulder abduction-adduction after stroke using UE-ARM. The experiment was conducted with a total of eight healthy subjects and three stroke patients to analyze and identify suitable kinematic variables by finding the significant differences between healthy subjects and stroke patients using T-test method. In development of predictive model for upper extremity, it aims to present an automated predictive model that able to classify the motor impairment level that corresponding to the Motor Assessment Scale (MAS). A combined feature selection with the different classifiers were implemented to improve the accuracy of the model performance.

Chapter 4 presents the results of the study on pilot study I and pilot study II, as well as the results from the predictive model for upper extremity assessment after stroke. The kinematic variables that showed significance difference were used as input and combination of the input attributes for classifying stroke performance.

At last, Chapter 5 concludes the summary of the research, contributions of the study and suggestions for future work. References are included at the end of the thesis.

REFERENCES

- [1] Ralph L. S., Scott E. K., Joseph P. B., Louis R. C., Connors J. J., Antonio C., Mitchell S. V., Mary G. G., Allen D. H., Randall T. H., Brian L. H., Janis L. S., Carlos S. K., Dawn O. K., Lee J. M., Michael E. M., Eric D. P., Tanya N. T., Amy L. V., and Harry V. V. (2013) An Updated Definition of Stroke for the 21st Century. *Stroke*, 44, 2064-2089.
- [2] American Stroke Association. Types of Stroke [Online]. http://www.strokeassociation.org/STROKEORG/AboutStroke/TypesofStroke/Types-of-Stroke_UCM_308531_SubHomePage.jsp. Date accessed: 2014 September 26.
- [3] Stroke Association. Ischaemic stroke [Online]. <http://www.stroke.org.uk>. Date accessed: 2014 September 26.
- [4] Brains Gate. Ischaemic stroke [Online]. http://www.brainsgate.com/eng/page.php?id=3&instance_id=9. Date accessed: 2014 September 26.
- [5] Cheah W. K., Hor C. P., Zariah A. Z. and Irene L. (2016). A Review of Stroke Research in Malaysia from 2000 – 2014. *Med J Malaysia*, 71(1), 58-69.
- [6] Health Grove. Ischemic Stroke in Malaysia [Online]. <http://global-disease-burden.healthgrove.com/1/42721/Ischemic-Stroke-in-Malaysia>. Date accessed: 2016 December 12.
- [7] Sunhwa S., Hee K., and Jinhwa J. (2014). Comparison of Upper Extremity Motor Recovery of Stroke Patients with Actual Physical Activity in Their Daily Lives Measured with Accelerometers. *Journal of physical therapy science*, 26(7), 1009-11.

- [8] Colomer C., Llorens R., Noe E., and Alcaniz M. (2016). Effect of a mixed reality-based intervention on arm, hand, and finger function on chronic stroke. *Journal of NeuroEngineering and Rehabilitation*, 13(1), 45.
- [9] Ostwald S. K., Davis S., Hersch G., Kelley C., and Godwin K. M. (2008). Evidence-based educational guidelines for stroke survivors after discharge home. *The Journal of Neuroscience Nursing: Journal of the American Association of Neuroscience Nurses*, 40(3), 173–179, 191.
- [10] Bart K. (2016). *The Design And Usability Evaluation Of A Monitoring And Feedback System For Stroke Survivors*. PhD. University of Twente, Netherlands.
- [11] Dean C. and Mackey F. (1992). Motor Assessment Scale Scores as a Measure of Rehabilitation Outcome Following Stroke. *Australian Journal of Physiotherapy*, 38(1), 31-35.
- [12] Hisyam A. R. (2016). *Non-Motorized Three Degree of Freedom Assessment Tool For Stroke Patients*. PhD. Universiti Teknologi Malaysia, Malaysia.
- [13] Otten P., Kim J. and Son S. H. (2015). A Framework To Automate Assessment Of Upper-Limb Motor Function Impairment: A feasibility Study. *Sensors*, 15(8), 20097–20114.
- [14] Yeong, C. F. (2010). *ReachMAN to help sub-acute patients training reaching and manipulation*. PhD, Imperial College London, London.
- [15] Field M., Stirling D., Naghdy F. and Pan Z. (2009). Motion capture in robotics review. *IEEE International Conference on Control and Automation, ICCA*, 1697–1702.
- [16] Shah N. (2015). *Designing Motivational Games Robot-Mediated Stroke Rehabilitation*. PhD, University of Hertfordshire, United Kingdom.
- [17] Miguel J. M. (2015). *Mobile Real-Time Classification of Activities of Daily-Living in Post-Stroke Patients*. MSc. University of Porto, Portugal.
- [18] Mohd N., Aziz N. A., Abdul A. F., Ajit S., Omar O., Sulong S., and Aljunid S. M. (2014). Exploring views on long term rehabilitation for people with stroke in a developing country: findings from focus group discussions. *BMC Health Serv. Res.* 14(1), 118.
- [19] Natarajan P. (2011). *Expert System-Based Post-Stroke Robotic Rehabilitation for Hemiparetic Arm*. PhD, University of Kansas, USA.

- [20] Adams R. J., Lichter M. D. Krepkovich E. T. Ellington A. White M. and Diamond P. T. (2015). Assessing Upper Extremity Motor Function in Practice of Virtual Activities of Daily Living. *IEEE Transactions on Neural Systems and Rehabilitation Engineering*. 23(2), 287-296.
- [21] Johansson B. (2011). Current Trends in Stroke Rehabilitation. A review with Focus on Brain Plasticity. *Acta Neurol. Scand*. 123(3), 147-159.
- [22] French B., Thomas L., Coupe J., McMahon N. and Connell L. (2017). Repetitive Task Training for Improving Functional Ability After Stroke, A major update of a Cochrane review. *Stroke*.
- [23] Nudo R. J. (2003). Adaptive Plasticity in Motor Cortex: Implications for Rehabilitation After Brain Injury. *Journal of Rehabilitation Medicine*. 41, 7-10.
- [24] Song G. B. (2015). The Effects Of Task-Oriented Versus Repetitive Bilateral Arm Training On Upper Limb Function And Activities Of Daily Living In Stroke Patients. *Journal of Physical Therapy Science*. 27(5), 1353-5.
- [25] Blank A. A., French J. A., Pehlivan A. U., and O'Malley M. K. (2014). Current Trends in Robot-Assisted Upper-Limb Stroke Rehabilitation: Promoting Patient Engagement in Therapy. *Current Physical Medicine and Rehabilitation Reports*. 2(3), 184-195.
- [26] Chen M. H., Huang L. L., Lee C. F., Hsieh C. L., Lin Y. C., Liu H., Chen M. I. and Lu W. S. (2015). A Controlled Pilot Trial Of Two Commercial Video Games For Rehabilitation Of Arm Function After Stroke. *Clinical Rehabilitation*. 29(7), 674-682.
- [27] Joel S., Richard L., Carolee J. W., Richard D. Z., and George F. W. (2014). *Stroke Recovery and Rehabilitation. Second Edition*. Demos Medical Publishing, United State.
- [28] Ellis M. D., Sukal M. T. and Dewald J. P. (2009). Progressive Shoulder Abduction Loading is a Crucial Element of Arm Rehabilitation in Chronic Stroke. *Neurorehabilitation and Neural Repair*. 23(8), 862-869.
- [29] Rinske H. M., Erwin E. H., Barbara C., and Gert K. (2010). Presence of Finger Extension and Shoulder Abduction Within 72 Hours After Stroke Predicts Functional Recovery. *Stroke*. 17(5), 817-30.

- [30] Human Anatomy. Abduction Anatomy Definition [Online]. <https://humananatomy.site/abduction-anatomy-definition/>. Date accessed: 2016 December 12.
- [31] Erik J. D. (2010). *Upper Limb Project*. MSc. University of Twente, Netherlands.
- [32] Alan G. M., James A. H., Jon T. and Alan F. T. (2014). A Low-cost Real-time Tracking Infrastructure for Ground-based Robot Swarms. *Swarm Intelligence*. 2, 278-289.
- [33] Jeffrey D. K. (2009). *Biomechanical Evaluation of an Optical System for Quantitative Human Motion Analysis*. MSc. Marquette University, United States.
- [34] Vinay V, Pavan T., Nicole L., Michael B., Thanassis R., and Steven L. W. (2014). Decision Support For Stroke Rehabilitation Therapy Via Describable Attribute-Based Decision Trees. *36th Annual International Conference of the IEEE Engineering in Medicine and Biology Society*. 3153-3159.
- [35] Nicole L., Yinpeng C., Margaret D., Steven L. W. and Thanassis R. (2011). Exploring The Bases For A Mixed Reality Stroke Rehabilitation System, Part II: Design Of Interactive Feedback For Upper Limb Rehabilitation. *Journal of NeuroEngineering and Rehabilitation*. 8(1), 54.
- [36] Shin J. H., Ryu H., and Jang S. H. (2014). A Task-Specific Interactive Game-Based Virtual Reality Rehabilitation System For Patients With Stroke: A Usability Test And Two Clinical Experiments. *Journal of NeuroEngineering and Rehabilitation*. 11(1), 32.
- [37] Belinda L., Albert R., Chang C. Y., Evan S., and Mark B. (2011). Markerless Full Body Tracking: Depth-Sensing Technology within Virtual Environments. *Interservice/Industry Training, Simulation and Education Conference*.
- [38] Monica S. C., Sergi B. B. Esther D. O. and Paul F. V. (2010). Neurorehabilitation Using The Virtual Reality Based Rehabilitation Gaming System: Methodology, Design, Psychometrics, Usability and Validation. *Journal of NeuroEngineering and Rehabilitation*. 7(1), 48.
- [39] Saini S., Rambil D. R., Sulaiman S., Zakaria M. N., and Mohd Shukri S. R. A Low-Cost Game Framework For A Home-Based Stroke Rehabilitation System. *International Conference on Computer & Information Science (ICCIS)*. 55-60.

- [40] Llorens R. Gil-Gomez J. A., Alcariz M., Colomer C., and Noe E. (2015). Improvement In Balance Using A Virtual Reality-Based Stepping Exercise: A Randomized Controlled Trial Involving Individuals With Chronic Stroke. *Clinical Rehabilitation*. 29(3), 261-268.
- [41] Chang Y. J., Han W. Y., and Tsai Y. C. (2013). A Kinect-Based Upper Limb Rehabilitation System To Assist People With Cerebral Palsy. *Research in Development Disabilities*. 34(1), 3654-3659.
- [42] Parry I., Carbullido C., Kawada J., Bagley A., Sen S., Greenhalgh D., and Palmieri T. (2014). Keeping Up With Video Game Technology: Objective Analysis of Xbox Kinecttm and Playstation 3 Movetm For Use In Burn Rehabilitation. *Burns*. 40(5), 852-859.
- [43] Michele P. (2015). *The Design Of Exergaming Systems For Autonomous Rehabilitation*. PhD. Polytechnic University of Milan, Italy.
- [44] Gamasutra. Cognitive Flow: The Psychology of Great Game Design. [Online]. https://www.gamasutra.com/view/feature/166972/cognitive_flow_the_psychology_of_.php. Date accessed: 2015 January 9.
- [45] Michele P., Renato M., Gabriel B., Pier L. L. and Nunzio A. B. (2012). Self-Adaptive Games For Rehabilitation At Home. *IEEE Conference on Computational Intelligence and Games (CIG)*. 179-186.
- [46] Seo N. J., Arun K. J., Hur P., Crocher V., Motawar B., and Lakshminarayanan K. (2016). Usability Evaluation Of Low-Cost Virtual Reality Hand And Arm Rehabilitation Games. *Journal of Rehabilitation Research and Development*. 53(3), 321-334.
- [47] Anil K. R., Yash S., and Sonali D. (2013). Enhancing Effectiveness Of Motor Rehabilitation Using Kinect Motion Sensing Technology. *IEEE Global Humanitarian Technology Conference: South Asia Satellite*. 298-304.
- [48] Turolla A., Dam M., Venture L., Tonin P., Agostini M., Zucconi C., Kiper P. Cagnin A., and Piron L. (2013). Virtual Reality For The Rehabilitation Of The Upper Limb Motor Function After Stroke: A Prospective Controlled Trial. *Journal of NeuroEngineering and Rehabilitation*. 10(1), 85.

- [49] Crocher V., Hur P. and Seo N. (2013). Low-Cost Virtual Rehabilitation Games: House Of Quality To Meet Patient Expectations. *International Conference on Virtual Rehabilitation (ICVR)*. 94-100.
- [50] Chen S., Huang Y., and Chiang I. (2012). Using Somatosensory Video Games to Promote Quality of Life for the Elderly with Disabilities. *IEEE Fourth International Conference On Digital Game And Intelligent Toy Enhanced Learning*. 258-262.
- [51] Loren A. S., Artashes M., Diana M. and Nassir N. (2012). Human Skeleton Tracking From Depth Data Using Geodesic Distances And Optical Flow. *Image and Vision Computing*. 30(3), 217-226.
- [52] Dolatabadi E., Taati B., and Mihailidis A. (2014). Vision-Based Approach For Long-Term Mobility Monitoring: Single Case Study Following Total Hip Replacement. *Journal of Rehabilitation Research and Development*. 51(7), 1165-1176.
- [53] Zhang X. and Zhou P. (2011). Classification of Upper Limb Motions in Stroke Using High Density Surface EMG. *Annual International Conference of the IEEE Engineering in Medicine and Biology Society*. 3367-3370.
- [54] Tran J. (2014). *Exploring the Use of Consumer Grade Technology for Kinematic Assessment of the Upper Limb Following a Stroke*. MSc. University of Waterloo, Ontario.
- [55] Travis R. (2012). Sensor Based Time Series Classification of Body Movement. *REU Summer Project Final Report*.
- [56] Kotsiantis S., Kanellopoulos D., and Pintelas P. E. (2006). Data Preprocessing for Supervised Learning. *International Journal Of Computer Science*. 1(1), 1306-4428.
- [57] Patel S., Hughes R., Hester T., Stein J., Akay M., Dy J. and Bonato P. Tracking Motor Recovery In Stroke Survivors Undergoing Rehabilitation Using Wearable Technology. *Annual International Conference of the IEEE Engineering in Medicine and Biology*. 6858-6861.
- [58] Nicole A. C., Edward D. L. and Natalie B. (2015). Feature Selection for Wearable Smartphone-Based Human Activity Recognition with Able bodied, Elderly, and Stroke Patients. *Plos One*. 10(4), e0124414.

- [59] Patel S., Hughes R., Hester T., Stein J., Akay M., Jennifer G. D. and Bonalo P. (2010). A Novel Approach to Monitor Rehabilitation Outcomes in Stroke Survivors Using Wearable Technology. *Proceedings of the IEEE*. 98(3), 450-461.
- [60] Tien I., Glaser S. D., and Aminoff M. J. (2010). Characterization Of Gait Abnormalities In Parkinson's Disease Using A Wireless Inertial Sensor System. *Annual International Conference of the IEEE Engineering in Medicine and Biology*. 3353-3356.
- [61] Kira. K. and Rendell L. A. (1992). A Practical Approach To Feature Selection. *Ninth International Workshop on Machine learning*, 249-256.
- [62] Mark A. H. (1999). *Correlation-based Feature Selection for Machine Learning*. PhD. University of Waikato, New Zealand.
- [63] Marko R. S. and Igor K. (2003). Theoretical and Empirical Analysis of ReliefF and RReliefF. *Machine Learning*. 53(1/2), 23-69.
- [64] Igor K., Marko R. S. Marko R. and Uros P. (1996). ReliefF For Estimation And Discretization of Attributes in Classification, Regression, And ILP Problems. *E. Horwood*. 293.
- [65] Duda R. O., Hart P. E. and Stork D. G. (2001). *Pattern Classification. Second ed.* New York :Wiley.
- [66] Ali O., Ahmet T., Burcu E. H. Ahmet and H. E. (2016). A Clinically Feasible Kinematic Assessment Method of Upper Extremity Motor Function Impairment After Stroke. *Measurement*. 80, 207-216.
- [67] Zhang Z. (2015). *Wearable Sensor Technologies Applied for Post-Stroke Rehabilitation*. PhD. RMIT University, Australia.
- [68] Premith U. (2014). *Feature Selection and Classification Approaches for Biometric and Biomedical Applications*. PhD. RMIT University, Australia.
- [69] Kohari R. and John G. (1996). Wrappers for feature subset selection. *Artificial Intelligence*. 97(1/2), 273-324.
- [70] Chirstoffer S. (2014). *Machine Learning Algorithms for Stroke Diagnostics*. MSc. Chalmers University of Technology, Sweden.

- [71] Balasubramanyam C., Ajay M. S., Spanda K. R. and Seetharamu K. N. (2014). Curve Fitting for Coarse Data Using Artificial Neural Network. *Mathematical Sciences International Research Journal*. 3(2), 519-537.
- [72] Perseus Documentation. Classification Parameter Optimization [Online]. https://www.google.com/search?q=concept+of+linear+svm+and+non-linear+svm&source=lnms&tbm=isch&sa=X&ved=0ahUKEwj7kMqqsoDaAhUdSI8KHb9oA0gQ_AUICigB&biw=1920&bih=918#imgrc=zrUrCm0quv4zaM:&spf=1521737606844. Date accessed: 2017 December 20.
- [73] DU CS Lectures. Programming Fundamentals: Tree Structures [Online]. <http://ducslectures.blogspot.my/p/programming-fundamentals-tree-structures.html>. Date accessed: 2017 September 01.
- [74] Del D. S., Patel S., Cobelli C., and Bonato P. (2011). Estimating Fugl-Meyer Clinical Scores in Stroke Survivors Using Wearable Sensors. *Annual International Conference of the IEEE Engineering in Medicine and Biology Society*. 2011, 5839-5842.
- [75] Breiman L. (2001). Random Forests. *Machine Learning*. 45, 5-32.
- [76] Schwarz C., Brown T., Lee J., Gaspar J. and kang J. (2016). The Detection of Visual Distraction using Vehicle and Driver-Based Sensors. *SAE Technical Paper*.
- [77] Dehbandi B., Barachant A., Harary D. Long J. D., Tsagaris K. Z., Bumanlag S. J., and Putrino D. (2017). Using Data From the Microsoft Kinect 2 to Quantify Upper Limb Behavior: A Feasibility Study. *IEEE Journal of Biomedical and Health Informatics*. 21(5), 1386-1392.
- [78] Kim W., Cho S., Baek D., Bang H., and Paik N. (2016). Upper Extremity Functional Evaluation by Fugl-Meyer Assessment Scoring Using Depth-Sensing Camera in Hemiplegic Stroke Patients. *Plos One*. 11(7), e0158640.
- [79] Lee S., Song M., and Kim J. (2016). Towards Clinically Relevant Automatic Assessment Of Upper-Limb Motor Function Impairment. *IEEE-EMBS International Conference on Biomedical and Health Informatics (BHI)*. 148-151.
- [80] Scano A., Caimmi M., Chiaavenna A., Malosio M., and Tosatti L. M. (2015). Kinect One-based biomechanical assessment of upper-limb performance compared to clinical scales in post-stroke patients. *37th Annual International*

Conference of the IEEE Engineering in Medicine and Biology Society (EMBC). 2015, 5720-5723.

- [81] TingFang Du (2012). Upper Body Motion Analysis Using Kinect for Stroke Rehabilitation at the Home. MSc, Arizona State University, USA.
- [82] Philip S., Cao Y., and Li M. (2012). Sensor Based Time Series Classification of Body Movement. International Conference on Bio-Inspired Models of Network, Information, and Computing Systems. 303-309.
- [83] Tien I., Glaser S., and Aminoff M. (2010). Characterization of Gait Abnormalities in Parkinson's Disease Using a Wireless Inertial Sensor System. 2010 Annual International Conference of the IEEE Engineering in Medicine and Biology. 3353-3356.
- [84] Disabled World. Height Chart of Men and Women in Different Countries [Online]. <https://www.disabled-world.com/calculators-charts/height-chart.php> Date accessed: 2017 December 19.
- [85] Dzulkipli M. and Mustafar M. (2013). The Influence of Colour on Memory Performance: A Review. *The Malaysian Journal of Medical Sciences : MJMS*. 20(2), 3-9.
- [86] Bernhard J. and Nathaniel V. K. (2007). Color Design for the Color Vision Impaired. *Cartographic Perspectives*. 58, 61-67.
- [87] Paraschiv L. A., Bucher E. E., Rutschmann B., Najafi B., and Aminian K. (2004). Ambulatory System For The Quantitative And Qualitative Analysis Of Gait And Posture In Chronic Pain Patients Treated With Spinal Cord Stimulation. *Gait & Posture*. 20(2), 113-125.
- [88] Olesh E, Yakovenko S., and Gritsenko V. (2014). Automated Assessment of Upper Extremity Movement Impairment due to Stroke. *Plos One*. 9(8), e104487.
- [89] Patel S., Hughes R., Hester T., Stein J., Akay M., Jennifer G. D., and Bonato P. (2010). A Novel Approach to Monitor Rehabilitation Outcomes in Stroke Survivors Using Wearable Technology. *Proceedings of the IEEE*. 98(3), 450-461.
- [90] Kang S. G., Ryu B. J., Yang K. S., Ko Y. H., Cho S., Kang S. H., Patel V. R., and Cheon J. (2015). An Effective Repetitive Training Schedule to Achieve Skill

Proficiency Using a Novel Robotic Virtual Reality Simulator. *Journal of Surgical Education*. 72(3), 369-376.

- [91] Nicole P. (2013). *Autonomous Stroke Rehabilitation with Microsoft Kinect*. MSc. Stockholm, Sweden.
- [92] Beth C., Jill W., Gert K., Jan M., Sean E. and Jane B. (2017). Time Spent in Rehabilitation And Effect on Measures of Activity After Stroke. *Cochrane Database of Systematic Reviews*. 1465-1858.
- [93] Ellis M., Sukal-Moulton T., and Dewald J. (2009). Progressive Shoulder Abduction Loading is a Crucial Element of Arm Rehabilitation in Chronic Stroke. *Neurorehabilitation and Neural Repair*. 23(8), 862-9.