

PERFORMANCE OF LOAD-BEARING PRECAST CONCRETE  
WALL WITH BASE ISOLATION SUBJECTED TO SEISMIC  
LOADINGS

PATRICK TIONG LIQ YEE

UNIVERSITI TEKNOLOGI MALAYSIA

PERFORMANCE OF LOAD-BEARING PRECAST CONCRETE WALL WITH  
BASE ISOLATION SUBJECTED TO SEISMIC LOADINGS

PATRICK TIONG LIQ YEE

A thesis submitted in fulfilment of the  
requirements for the award of the degree of  
Doctor of Philosophy (Civil Engineering)

Faculty of Civil Engineering  
Universiti Teknologi Malaysia

SEPTEMBER 2014

*This humble piece of work is dedicated to my parents, my brother Philip, JMC and MWY who have always been supportive for every decision made and also not forgetting my relatives and friends whose companion is what makes this study possible*

## ACKNOWLEDGEMENTS

All thanks and praises be to God, the Almighty for His mercy and blessings upon us all and made it a reality that this study is successfully completed.

My sincere gratitude towards Professor Dr Azlan Adnan, being my main supervisor who has never short of ideas, and full of support in whatever necessities that is required throughout this research journey. Not forgetting the unending assistance received from my co-supervisors; Associate Professor Dr Ahmad Baharuddin Abdul Rahman and Professor Ir Dr Abdul Karim Mirasa (Universiti Malaysia Sabah). Collaboration with Associate Professor Dr Nor Hayati Abdul Hamid (Universiti Teknologi MARA) for the quasi-static test is also acknowledged.

Thanks to my parents who have always been supportive despite my decision to continue for my doctorate degree as a fulltime student. Their moral support and encouragement is what it takes for me to be able to pursue my dream with ease of mind. Thank you also to my aunt Elizabeth for her unending support and concern.

Special thanks to Professor James M. Kelly (University of California, Berkeley) for the discussion over seismic base isolation of this study. To Dr Kim S. Elliot (University of Nottingham, UK) and Professor Dr David A. Nethercot (Imperial College, London), their advices at the initial stage of the research are particularly acknowledged.

Acknowledgement to industry partners; HC Precast System Sdn. Bhd. and Doshin Rubber Products (M) Sdn. Bhd. for the limitless support in terms of material and fabrication of test specimens. The author is also grateful to the Yayasan Sultan Iskandar Johor for the scholarship and financial aids provided throughout the study.

## ABSTRACT

The government of Malaysia has been strongly encouraging local construction industry to utilize Industrialized Building System (IBS) to reduce dependence on foreign workers and improve site safety and construction duration. This study investigated the seismic performance of a locally developed precast concrete wall system by local system supplier, namely the HC Precast System (HCPS). The system used load-bearing precast infill panel which was connected to adjacent columns through shear keys and dowel bars protruded by both sides of the wall panel. This type of precast system is not currently covered by Eurocode 8. A full-scale single bay, double storey prototype structure consisted of HCPS was constructed and tested under lateral quasi-static loading at laboratory of Construction Research Institute of Malaysia (CREAM). Displacement-controlled cyclic loading of 0.05%, 0.20%, 0.40%, 0.50% and 0.70% roof drift was applied to the prototype structure to obtain the force-displacement hysteresis loops. Observation from the quasi-static test revealed concentration of damage along the wall-to-column interface. Thus, a finite element modeling method was proposed to represent the nonlinearity of the interface element in the numerical model. Next, a 1:3 scaled down of the prototype HCPS was designed and constructed for shake table test. Besides scaling of the test specimen, characteristics of 8 selected ground motions were also scaled correspondingly according to similitude law including the time steps and peak acceleration values. The proposed FEM model was found to be in good agreement with both quasi-static and shake table tests. The verified FEM model was used to generate capacity curves of HCPS by pushover analysis with four different lateral loading configurations respectively. The characteristic of the capacity curves and obtained behaviour factor was compared to the Equal Displacement Rule (EDR) method recommended by Eurocode 8. Thus N2Disp, a method for engineers to estimate the nonlinear displacement of HCPS from linear analysis was proposed. Seismic response of HCPS under Malaysia earthquake loading was carried out with Modal Response Spectrum Analysis (MRSA) and pushover analysis with design ground acceleration  $a_g$  values of 0.05g, 0.075g and 0.1g. It was found that in all three  $a_g$  levels, the performance of HCPS remained within Immediate Occupancy (IO) level. High damping rubber bearing (HDRB) was designed to provide seismic base isolation of HCPS at target period of 2.5s. The HDRB was designed, manufactured and tested at real size to obtain the dynamic property such as compressive and lateral stiffness as well as hysteresis damping ratio. The nonlinear base isolated model of HCPS was analyzed for 33 time histories representing a wide variety of epicenter distance, magnitude, soil classification and acceleration to velocity ( $a/v$ ) ratio. It was revealed that while base isolation provided effective reduction in floor acceleration responses (up to 97%) in most time history cases, adverse results (amplification) were observed in ground acceleration having low ( $a/v$ ) ratio and providing higher damping ratio (i.e.  $\beta = 24\%$ ) at the isolation system.

## ABSTRAK

Kerajaan Malaysia telah mulai menggalakkan pembinaan tempatan untuk menggunakan *Industrialized Building System (IBS)* untuk mengurangkan pergantungan terhadap tenaga buruh luar serta meningkatkan keselamatan dan juga masa pembinaan. Kajian ini menjurus kepada prestasi gempa bumi sistem dinding pra-tuang tempatan, *HC Precast System (HCPS)*. Sistem tersebut terdiri daripada dinding pra-tuang menanggung beban yang dihubungkan kepada tiang bersebelahan melalui kekunci ricih dan tetulang tertonjol dari kedua-dua belah tepi dinding. Jenis struktur dinding ini masih belum dirangkumi oleh *Eurocode 8* sehingga kini. Struktur prototaip HCPS dua tingkat dibina lalu diuji dengan pembebanan sisi *quasi-static* di Makmal Kerja Raya (CREAM). Pembebanan sisi dikenakan pada 0.05%, 0.20%, 0.40%, 0.50% dan 0.70% anjakan bumbung untuk mendapatkan lingkaran histerisis daya-anjakan. Pemerhatian daripada ujian tersebut menunjukkan kerosakan tertumpu di sepanjang perantaraan tiang ke dinding. Justeru itu, model analisis unsur terhingga telah dicadangkan untuk mewakili sifat tidak lurus unsur perantaraan tersebut. Seterusnya, saiz prototaip HCPS tersebut dikecilkan skalanya kepada 1:3 untuk ujian meja getar. Sifat-sifat 8 data gempa bumi yang telah dipilih turut diselaraskan demi memenuhi hukum *similitude*, termasuk skala masa dan pemecutan puncak. Model kaedah unsur terhingga yang dicadangkan telah menunjukkan hasil analisis yang memuaskan dengan data ujian *quasi-static* dan meja getar lalu digunakan untuk menghasilkan lengkung kapasiti HCPS melalui analisis *pushover* dengan empat pembebanan sisi yang berlainan. Sifat lengkung kapasiti dan faktor tingkah laku dibandingkan dengan kaedah *Equal Displacement Rule (EDR)* dalam *Eurocode 8*. Jadi, N2Disp, kaedah baru untuk anggaran anjakan tidak lurus HCPS melalui analisis linear telah dicadangkan. Tindak balas seismik HCPS terhadap gempa bumi Malaysia dilakukan menggunakan *Modal Response Spectrum Analysis (MRSA)* dan *pushover* dengan nilai pemecutan rekabentuk  $a_g$  0.05g, 0.075g dan 0.1g. Kajian menunjukkan dalam ketiga-tiga nilai  $a_g$ , HCPS masih berada dalam status *Immediate Occupancy (IO)*. Galas getah berendaman tinggi (HDRB) telah direncana untuk memberi pemencilan seismik HCPS pada tempoh getar 2.5 s. HDRB telah direncana, dihasilkan dan diuji pada skala penuh untuk mendapatkan sifat dinamik seperti kekakuan tegak dan ufuk. Analisis unsur terhingga tidak lurus bagi model HCPS dengan HDRB dilakukan dengan 33 rekod gempa bumi yang merangkumi pelbagai jarak pusat gempa, magnitud, klasifikasi tanah dan nisbah pemecutan terhadap halaju ( $a/v$ ). Hasil analisis menunjukkan bahawa walaupun tindak balas pemecutan di bumbung bangunan telah dikurangkan sebanyak 97% dengan menggunakan HDRB, namun peningkatan telah diperhatikan dalam rekod gempa bumi yang mempunyai nisbah  $a/v$  yang rendah. Adalah diperhatikan bahawa dengan memberikan nilai rendaman yang tinggi (i.e.  $\beta = 24\%$ ) pada sistem pemencilan seismik, tindak balas yang diperolehi tidaklah selalunya memberikan kesan yang positif.

## TABLE OF CONTENTS

CHAPTER	TITLE	PAGE
	<b>DECLARATION</b>	ii
	<b>DEDICATION</b>	iii
	<b>ACKNOWLEDGEMENTS</b>	iv
	<b>ABSTRACT</b>	v
	<b>ABSTRAK</b>	vi
	<b>TABLE OF CONTENTS</b>	vii
	<b>LIST OF TABLES</b>	xii
	<b>LIST OF FIGURES</b>	xv
	<b>LIST OF ABBREVIATIONS</b>	xxvii
	<b>LIST OF SYMBOLS</b>	xxix
	<b>LIST OF APPENDIX</b>	xxxii
<b>1</b>	<b>INTRODUCTION</b>	<b>1</b>
	1.1 General	1
	1.2 Problem Background	4
	1.2.1 Precast Construction in Malaysia	4
	1.2.2 Seismicity in Malaysia	9
	1.2.3 Seismic Performance and Mitigation of HCPS	12
	1.3 Problem Statement	16
	1.4 Research Aim and Objectives	17
	1.5 Scopes of Work and Research Boundaries	18
	1.6 Research Significance	19
	1.7 Thesis Layout	20

<b>2</b>	<b>LITERATURE REVIEW</b>	<b>21</b>
2.1	Introduction	21
2.2	Advantages and Disadvantages of Precast Concrete Construction	21
2.3	Laboratory Studies	22
2.3.1	Precast Concrete Wall with Shear Keys	22
2.3.2	Lateral Cyclic Tests on Precast Walls	28
2.3.3	Shake Table Tests on Precast Walls	34
2.3.4	High Damping Rubber Bearings (HDRB) Tests	38
2.3.5	Shake Table Tests of HDRB	41
2.4	Seismic Analysis and Design of Precast Wall Structures	45
2.5	Base Isolation Structures	47
2.6	Precast Concrete Wall Systems in Malaysia	52
2.7	Concluding Remarks	54
<b>3</b>	<b>THEORETICAL BACKGROUND</b>	<b>57</b>
3.1	Introduction	57
3.2	Seismic Analysis of Structure	57
3.3	Structural Performance Levels	59
3.4	Nonlinear Seismic Response of Structure	60
3.5	Seismic Response of Base Isolated Structure	68
3.6	Conventional Design of High Damping Rubber Bearing	69
3.6.1	Lateral Stiffness Design	69
3.6.2	Vertical Stiffness Design	70
3.6.3	Design of Base Isolated Structure	72
3.7	Shear Key (Castellated Joint) Design	74
3.8	Laboratory Tests Guidelines	75
3.8.1	Lateral Cyclic Test of Precast Wall Structure	75
3.8.2	Shake Table Testing	79



	3.8.3 HDRB Testing	79
<b>4</b>	<b>RESEARCH METHODOLOGY</b>	<b>82</b>
	4.1 Introduction	82
	4.2 Overview of Research Flow	82
	4.3 Detail Steps of the Research Works	84
<b>5</b>	<b>VERIFICATION OF FINITE ELEMENT MODELING</b>	<b>87</b>
	5.1 Introduction	87
	5.2 Lateral Quasi-Static Loading Test of HCPS	88
	5.2.1 Test Specimen	89
	5.2.2 Structural Design of HCPS-QST	89
	5.2.3 Quasi-Static Loading Protocols	91
	5.2.4 Laboratory Test Results	94
	5.3 Finite Element Modeling of HCPS-QST	95
	5.3.1 Frame Element Modeling	96
	5.3.2 Area Element Modeling	96
	5.3.3 Formulation of Interface Modeling	97
	5.3.3.1 Currently Available Hysteresis Model	97
	5.3.3.2 Proposed Interface Modeling for HCPS	101
	5.3.4 Material Properties	107
	5.3.5 Quasi-Static Loading Protocols	108
	5.3.6 Results and Discussion	109
	5.3.6.1 Localized Wall Cracks	109
	5.3.6.2 Hysteresis (Capacity) Loops	110
	5.4 Shake Table Test of HCPS	114
	5.4.1 Test Specimen	114
	5.4.2 Scaling Requirements	117
	5.4.3 Structural Design of Test Specimen	120
	5.4.4 Specimen Preparation	121

	5.4.5	Laboratory Test Setup	128
	5.4.6	Selection of Input Ground Motion	134
	5.4.7	Results and Discussion	136
	5.4.7.1	Filtration of Readings	136
	5.4.7.2	Natural Period	139
	5.4.7.3	Roof Acceleration and Displacement Responses	142
	5.4.7.4	Finite Element Modeling	143
<b>6</b>		<b>SEISMIC RESPONSE OF FIXED BASE HCPS</b>	<b>151</b>
	6.1	Introduction	151
	6.2	Pushover versus Cyclic Responses	152
	6.3	Pushover Analysis	153
	6.4	Effect of HCPS on Structural Lateral Stiffness	154
	6.5	Global Behaviour Factor ( $q_0$ )	158
	6.6	Global Displacement Behaviour Factor ( $q_d$ )	162
	6.7	Dowel Behaviour	176
	6.8	Comparison of HCPS with Simplified Analytical or Strut-Tie Model	190
	6.9	Seismic Analysis of HCPS for Malaysia Condition	192
	6.9.1	Vertical Loading Conditions of HCPS	193
	6.9.2	Results and Discussion	195
	6.9.2.1	Linear Analysis	195
	6.9.2.2	Nonlinear Pushover Analysis	201
	6.10	Summary	205
<b>7</b>		<b>SEISMIC RESPONSE OF BASE ISOLATED HCPS</b>	<b>207</b>
	7.1	Introduction	207
	7.2	Proposed HDRB Design Limit	207
	7.3	Seismic Base Isolation of HCPS by HDRB	216
	7.3.1	Design of HDRB	216
	7.3.2	Fabrication (or Manufacturing) of HDRB for HCPS	217

	7.3.2.1	Preparation of Steel Shims	218
	7.3.2.2	Preparation of Rubber Compound and Building Process of HDRB	219
	7.3.3	Laboratory Tests	221
	7.3.3.1	Vertical (Compression) Stiffness Test	221
	7.3.3.2	Lateral (Shear) Stiffness Test	224
7.4		Seismic Performance Study of Base Isolated HCPS	229
	7.4.1	Finite Element Modeling	229
	7.4.2	Selection of Strong Ground Motions	230
	7.4.3	Results from Nonlinear Time History Analyses	232
	7.4.3.1	Base Shear Responses	232
	7.4.3.2	Floor Acceleration Responses	237
7.5		Effect of Hysteresis (Structural) Damping	246
	7.5.1	Base Shear Response of HDRB-VL2	246
	7.5.2	Acceleration Response of HDRB-VL2	249
	7.5.3	Base Shear Response of HDRB-VL3	251
	7.5.4	Acceleration Response of HDRB-VL3	252
7.6		Summary	256
<b>8</b>		<b>CONCLUSION AND RECOMMENDATIONS</b>	<b>258</b>
	8.1	Introduction	258
	8.2	Brief Conclusions	258
	8.3	Detailed Conclusions	259
	8.3.1	Capacity Curve and $q_0$ of HCPS	259
	8.3.2	Dynamic Structural Vulnerability Study	262
	8.3.3	Seismic Base Isolation of HCPS	263
	8.4	Recommendations for Future Work	264
		<b>REFERENCES</b>	<b>266</b>
		Appendix A	277

## LIST OF TABLES

TABLE NO.	TITLE	PAGE
1.1	Rising of construction cost particularly in Southeast Asia countries	2
1.2	Recorded past earthquake events in Malaysia up to September 2007	10
2.1	Results of shake table test with different ground excitations (Falborski and Jankowski, 2012).	42
2.2	Maximum absolute acceleration responses recorded from shake table test (Chung <i>et al</i> , 1999)	44
2.3	Base shear and overturning moment from shake table test (Chung <i>et al</i> , 1999)	44
2.4	Summary of literature reviews	54
3.1	Permitted analytical procedures (ASCE, 2006)	58
3.2	Conditions to be met to use the simplified linear analysis of base isolated structure (CEN, 2003)	73
5.1	List of laboratory tests involved in this study	88
5.2	Structural details of the full scale HCPS test model	94
5.3	Measured cracks width at 0.60 % and 0.70 % roof drift as compared with FEM	95
5.4	Assignment of layered shell element for nonlinear analysis	96
5.5	Condensed set of simplified hysteresis rules	99
5.6	Tension deformability of single dowel bar in precast connection	102
5.7	Physical and performance limitation of shake table	

	facility	115
5.8	Proposed scale factors for three different options (Dove and Bennett, 1986)	118
5.9	Scaling factors used in producing the shake table test specimen in this study	119
5.10	Structural details of the 1:3 shake table testing specimen	120
5.11	Basic parameters of the accelerometers used in the shake table test	130
5.12	Sensitivity values of all four accelerometers	131
5.13	Detail of selected time histories for shake table test	
5.14	Category of the ground motion based on $a/v$ ratio	
5.15	Commonly used signal filtering method	138
5.16	First mode period obtained from white noise excitations with different peak accelerations	141
5.17	Laboratory observed acceleration response at base and roof of HCPS	142
5.18	Laboratory observed displacement response at base and roof of HCPS	142
5.19	Comparison of peak acceleration responses from shake table test and FEM	149
5.20	Comparison of peak displacement responses from shake table test and FEM	150
6.1	Lateral loading patterns used in pushover analysis of HCPS	153
6.2	Structural performance of FRME and HCPS from pushover analysis	157
6.3	First and second mode period of HCPS, rigidly connected wall and equivalent structural frame system	158
6.4	Basic value of behaviour factor ( $q_0$ ) for systems regular in elevation (CEN, 2003)	159
6.5	Equations for high accuracy N2Disp approach	167
6.6	Comparison between EC8 and N2Disp displacement estimation method	169

6.7	Three different configurations of HCPS with different imposed vertical loads	194
6.8	Recommended seismic analysis of structure in EC8	195
6.9	Mode shape period $T$ and modal participation factor $M_X$ of HCPS-VL1, HCPS-VL2 and HCPS-VL3	196
6.10	Dowel reaction of HCPS-VL1 within pullout capacity	200
6.11	Force ratio of column, wall and dowel bar for HCPS-VL3 obtained from MRSA	202
6.12	Force ratio of column, wall and dowel bar for HCPS-VL3 obtained from pushover analysis	204
7.1	Naming convention of the HRDB used in this study	216
7.2	Detail of high damping rubber bearing (HDRB) used in this study	217
7.3	Designed vertical stiffness compared to laboratory results	223
7.4	Designed shear stiffness and expected damping ratio compared to laboratory test results	226
7.5	Value of $K_1$ and $K_2$ used for base isolation element in FEM	230
7.6	Details of selected ground motion from PEER database for time history analysis	230

## LIST OF FIGURES

FIGURE NO.	TITLE	PAGE
1.1	Formulation of problem statement through related problem background	4
1.2	(a) Cantilever wall system and (b) HC precast wall system (HCPS)	6
1.3	Shear keys and dowel bars alongside vertical edges of wall panel	7
1.4	Wet joint casting at site forming columns as well as vertical connections	7
1.5	Innovated modular moulds for wet-joint grouting at site	8
1.6	Location of epicenter of the 18 <sup>th</sup> May 2008 earthquake in Sabah Region	11
1.7	The far-field effects of earthquakes (Balendra and Li, 2008)	11
1.8	(a) Large interstory drift and disruption to a fixed base building contents and (b) Mitigation of seismic force by base isolation system (Mayes and Naeim, 2001)	13
1.9	High damping rubber bearing (HDRB) showing internal layers	14
1.10	Structural response of (a) fixed base and (b) base isolated structure	15
1.11	Damping ratio effect on spectra (a) acceleration and (b) displacement	16
2.1	Precast wall test specimens with (a) plain connection (b) keyed connection and (c) shear keyed connection	

	(Chakrabati <i>et al</i> , 1988a)	24
2.2	Failure observed in the direct shear test of shear keyed connection (Chakrabati <i>et al</i> , 1988a)	24
2.3	Multiple shear keys connection tested by Soudki <i>et al</i> (1996)	25
2.4	Precast infill strengthening element of existing non-ductile RC frame (Frosch <i>et al</i> , 1996)	26
2.5	FEM discretization of the 12 storey building into (a) 36 elements (b) 120 elements (Chakrabati <i>et al</i> , 1988b)	27
2.6	Lateral deformation of storey level for different shear stiffness of shear key (Chakrabati <i>et al</i> , 1988b)	27
2.7	Dual system tested by Rodriguez and Blandon (2005)	28
2.8	Different dowel configurations used in the model preparation in (a) rectangular and (b) strip arrangements (Okuyucu and Tankut, 2009)	29
2.9	Capacity curves obtained from the quasi-static tests (Okuyucu and Tankut, 2009)	29
2.10	Test specimen and laboratory setup of the quasi-static test (Hamid <i>et al</i> , 2008)	30
2.11	Location of dowel bars in test model IF2 (Nimry, 2014)	30
2.12	Laboratory set up for quasi-static test (Nimry, 2014)	31
2.13	Lateral cyclic loading protocols (Nimry, 2014)	31
2.14	Hysteresis loops obtained from quasi-static test for (a) IF2 and (b) IF3 (Nimry, 2014)	32
2.15	Proposed infill-to-frame connections by Terec and Enyendi (2012)	33
2.16	Set up of quasi-static testing (Terec and Enyendi, 2012)	33
2.17	Schematic illustration of the test model and direction of earthquake excitation (Kwan and Xia, 1995)	34
2.18	Crushing of corner concrete at concrete infill and buckling of steel column at ground floor (Kwan and Xia, 1995)	35
2.19	Shake table test set up of the precast wall system	



	(Marriot <i>et al</i> , 2008)	36
2.20	Installation of damper mechanism and steel cage (Marriot <i>et al</i> , 2008)	36
2.21	Results of shake table tests for the three precast walls with different damping mechanism installed (Marriot <i>et al</i> , <i>et al</i> , 2008)	37
2.22	Typical wall-type structural system used in Korea construction (Park <i>et al</i> , 2011)	37
2.23	Proposed retrofitting using simple steel brackets between wall and slab (Park <i>et al</i> , 2011)	38
2.24	Detail of the three types of rubber bearing (a) HDRB-A, (b) HRDB-B and (c) LRB (Kikuchi and Aiken, 1997)	39
2.25	Hysteresis loops of (a) HDRB-A, (b) HRDB-B and (c) LRB (Kikuchi and Aiken, 1997)	39
2.26	Compression test result of HDRB Type 1 (Malek <i>et al</i> , 2012)	40
2.27	Double shear configuration of the HDRB for shear stiffness test (Malek <i>et al</i> , 2012)	40
2.28	Hysteresis loops of the Type 1 HDRB from shear test (Malek <i>et al</i> , 2012)	40
2.29	1:25 scale model of base isolated building (Kikuchi and Aiken, 1997)	41
2.30	Prototype of the elastomeric polymer bearing (Falborski and Jankowski, 2012)	42
2.31	Dimensions and sensor locations of shake table test structures (Chung <i>et al</i> , 1999)	43
2.32	Details of 1:2.5 scale rubber bearing base isolator in Chung <i>et al</i> (1999)	43
2.33	Shear stress resisted by castellated joint (Hartland, 1975)	46
2.34	The studied base isolation building (Braga and Laterza, 2004)	48
2.35	Results of HDRB shear stiffness and compression	

	stiffness tests (Braga and Laterza, 2004)	48
2.36	Forced displacement of the base isolated building by actuators (Braga and Laterza, 2004)	49
2.37	Displacement of the HDRB due to externally applied force (Braga and Laterza, 2004)	49
2.38	Displacement of base isolation system (Sayani <i>et al</i> , 2011)	52
2.39	Precast wall panel used by Eastern Pretech and (b) Brick wall still being used in conjunction with precast frame system (Eastern Pretech, 2010)	53
2.40	The precast wall system required direct support from wall below (Eastern Pretech, 2010)	53
2.41	Water proofing problem faced along the wall-to-wall interface	53
3.1	Structural performance levels (FEMA, 2000)	59
3.2	MDOF of 2 storey shear building	62
3.3	Elastoplastic resistance-displacement relationship for MDOF system (Joseph <i>et al</i> , 1999)	64
3.4	2-DOF structural model with base isolation (Naeim and Kelly, 1999)	68
3.5	Interface transferring shear between two concrete elements	75
3.6	Setting up of the quasi-static test structure (Hawkins and Ghosh, 2004)	76
3.7	Unfavorable deformation of wall components (Hawkins and Ghosh, 2004)	76
3.8	Favored wall deformation components (Hawkins and Ghosh, 2004)	77
3.9	Coupled wall test with vertical mechanical couplers (Hawkins and Ghosh, 2004)	77
3.10	Lateral loading protocols recommended in NEHRP (BSSC, 2003)	78
3.11	Typical hysteresis loops of quasi-static test (Hawkins	

	and Ghosh, 2004)	78
4.1	Overall Research Methodology based on Objectives of this Study	83
4.2	Flow Chart of Details of Steps in this Study	86
5.1	Full scale HCPS model for lateral cyclic loading test	89
5.2	Structural drawing of prototype HCPS for quasi-static test	92
5.3	Structural detailing of HCPS test model	93
5.4	Laboratory set up for lateral cyclic test of HCPS	93
5.5	Hysteresis model (Takeda <i>et al.</i> , 1970)	97
5.6	Typical capacity curve of monotonically loaded concrete member (Dowell <i>et al.</i> , 1998)	98
5.7	Designations of pivot points	99
5.8	Graphical representations of simplified hysteresis rules	100
5.9	Bond stress-slip relationships for loading and unloading sequence	101
5.10	Assigned nonlinear elements in FEM for wall-column interfaces	102
5.11	Hysteresis model for dowel actions (Hashemi <i>et al.</i> 2009)	103
5.12	Sealing of horizontal gap with mortar	104
5.13	50 mm x 50 mm plastic plates with thickness from 1 to 20 mm	104
5.14	Horizontal gaps between wall panels and slab beneath the wall panel	105
5.15	Vertical displacement of the horizontal gap (L side)	105
5.16	Vertical displacement of the horizontal gap (R side)	106
5.17	Crack widths along the horizontally sealed gap between wall and slab	107
5.18	(a) FEM results and (b) Laboratory observations	110
5.19	Hysteresis curves of HCPS from experimental and numerical modeling	112
5.20	Splitting of column section	112

5.21	Additional rigid ties between dowel bars from wall panel and column longitudinal reinforcement bars	114
5.22	Six test specimens at final casting phase	116
5.23	Formation of honeycomb in one of the six specimens	116
5.24	Dimension and layout of the 1:3 scale shake table testing specimen	121
5.25	Time schedule of laboratory specimen preparation for shake table testing	123
5.26	Mounting holes on top of shake table and base of test specimen	124
5.27	Insertion of PVC pipes in grid pattern to form base mounting holes	124
5.28	Specially fabricated steel modular moulds for wet joint concreting	125
5.29	Concreting of base panel of HCPS test specimen	125
5.30	Concreting of precast wall panels of HCPS test specimen	126
5.31	Concreting of half-slab panel	126
5.32	(a) Stabilizing precast wall by temporary struts and (b) Installation of modular moulds for wet joint concreting	128
5.33	Installation of strain gauges at dowel bars at 1F wall panel	128
5.34	Installed sensors for data acquisition of the shake table testing of HCPS	129
5.35	Kistler Reference Shaker Type 8921 used to vibrate accelerometer at known acceleration amplitude and frequency	130
5.36	Shake table excitation and acceleration readings recorded by Accelerometer 2	131
5.37	Shake table excitation and acceleration readings recorded by Accelerometer 3	132
5.38	Shake table excitation and acceleration readings recorded by Accelerometer 4	132

5.39	Frequency content from shake table excitation and reading recorded by Accelerometer 2	133
5.40	Frequency content from shake table excitation and reading recorded by Accelerometer 3	133
5.41	Frequency content from shake table excitation and reading recorded by Accelerometer 3	133
5.42	Operational and data acquisition of the shake table test	137
5.43	Filtered and unfiltered displacement response from the shake table test	138
5.44	White noise excitation	140
5.45	Frequency content of the white noise excitation	140
5.46	Zoomed frequency content of the white noise excitation	140
5.47	Dominant first mode period of 1:3 HCPS test specimen	140
5.48	Concrete stress-strain curves to be used in FEM analysis	143
5.49	Roof acceleration responses between laboratory and FEM (Tabas earthquake)	143
5.50	Roof displacement responses between laboratory and FEM (Tabas earthquake)	144
5.51	Roof acceleration responses between laboratory and FEM (El Centro earthquake)	144
5.52	Roof displacement responses between laboratory and FEM (El Centro earthquake)	144
5.53	Roof acceleration responses between laboratory and FEM (Irpinia earthquake)	145
5.54	Roof displacement responses between laboratory and FEM (Irpinia earthquake)	145
5.55	Roof acceleration responses between laboratory and FEM (Kobe earthquake)	145
5.56	Roof displacement responses between laboratory and FEM (Kobe earthquake)	146
5.57	Roof acceleration responses between laboratory and FEM (Malaysia earthquake)	146
5.58	Roof displacement responses between laboratory and	

	FEM (Malaysia earthquake)	146
5.59	Roof acceleration responses between laboratory and FEM (New Zealand earthquake)	147
5.60	Roof displacement responses between laboratory and FEM (New Zealand earthquake)	147
5.61	Roof acceleration responses between laboratory and FEM (Taiwan SMART1 earthquake)	147
5.62	Roof displacement responses between laboratory and FEM (Taiwan SMART1 earthquake)	148
5.63	Roof acceleration responses between laboratory and FEM (Ducze earthquake)	148
5.64	Roof acceleration responses between laboratory and FEM (Dusze earthquake)	148
6.1	Comparison between hysteresis and pushover responses	152
6.2	Capacity curves of FRME and HCPS by TDL pushover loading	154
6.3	Capacity curves of FRME and HCPS by UDL pushover loading	155
6.4	Location of plastic hinge formation at columns	156
6.5	Performance level and roof drift of HCPS and FRME	156
6.6	Modal analysis of HCPS	158
6.7	Capacity curves of HCPS obtained from different pushover load cases	160
6.8	Behaviour factor $q_0$ versus pushover loading patterns	161
6.9	Procedures using the N2Disp approach	165
6.10	Simplified steps in using high accuracy N2Disp	166
6.11	Percentage difference between actual values with EC8 and N2Disp method	170
6.12	Stiffness changes of HC Precast System	172
6.13	Extended linear analysis verification with 2 storey 3 bay HCPS	175
6.14	Extended linear analysis verification with 3 storey 1 bay HCPS	175

6.15	Numbering and naming convention of dowel bars	177
6.16	Compression Dowel Actions from GF to 1F Level	178
6.17	Tension Dowel Actions from GF to 1F Level (R)	180
6.18	Compression Dowel Actions from 1F to RF Level	181
6.19	Tension Dowel Actions from 1F to RF Level (R)	182
6.20	Compression Dowel Actions from GF to 1F Level	184
6.21	Tension Dowel Actions from GF to 1F Level (L)	185
6.22	Compression Dowel Actions from 1F to RF Level	187
6.23	Tension Dowel Actions from 1F to RF Level (L)	188
6.24	Diagonal compression and tension strut-tie width under different lateral loading types	189
6.25	Capacity curves of HCPS and equivalent frame with diagonal compressive strut	191
6.26	Behaviour factor $q_0$ of HCPS and Elliot (2002) diagonal strut model	192
6.27	Seismic hazard maps for (a) Peninsular Malaysia and (b) Borneo (Adnan <i>et al</i> , 2005)	193
6.28	(a) HCPS-VL1 and (b) HCPS-VL2 and HCPS-VL3	194
6.29	First two mode shapes of HCPS from modal analysis	197
6.30	Spectral acceleration of Peninsular Malaysia ( $a_g$ ) = 0.1g for different soil classifications	198
6.31	Base shear of HCPS-VL1 for different design ground accelerations and soil classification from MRSA	199
6.32	Roof displacement of HCPS-VL1 obtained from MRSA	201
6.33	Roof displacement demand of HCPS-VL3 from pushover and MRSA	203
7.1	Force ratio of column, wall and dowel bar for HCPS-VL3 obtained from pushover analysis	208
7.2	Product catalog of HDRB (Bridgestone, 2013)	210
7.3	Work flow of steel shim preparation	218
7.4	Work flow of HDRB manufacturing process	220
7.5	Compression stiffness test of the three HDRB	221
7.6	Compression stiffness test result of HDRB-VL1	222

7.7	Compression stiffness test result of HDRB-VL2	222
7.8	Compression stiffness test result of HDRB-VL3	222
7.9	Cross sectional cut of HDRB-VL1 revealing bending of steel plates	223
7.10	Shear stiffness testing configuration of the three HDRB	224
7.11	Hysteresis loops of shear stiffness test for HDRB-VL1	225
7.12	Hysteresis loops of shear stiffness test for HDRB-VL2	225
7.13	Hysteresis loops of shear stiffness test for HDRB-VL3	225
7.14	FEM of HDRB-VL1	227
7.15	FEM of HDRB-VL2	227
7.16	FEM of HDRB-VL3	227
7.17	Shear stiffness of HDRB-VL1 from laboratory test and FEM analysis	228
7.18	Shear stiffness of HDRB-VL2 from laboratory test and FEM analysis	228
7.19	Shear stiffness of HDRB-VL3 from laboratory test and FEM analysis	228
7.20	Estimation of shear stiffness slopes from test results	229
7.21	Base shear reduction of HDRB-VL2 under Class 1 $a/v$ ground motions	232
7.22	Base shear reduction of HDRB-VL3 under Class 1 $a/v$ ground motions	233
7.23	Base shear reduction between HDRB-VL2 and HDRB-VL3 under Class 1 $a/v$ ground motions	233
7.24	Base shear reduction of HDRB-VL2 under Class 2 $a/v$ ground motions	234
7.25	Base shear reduction of HDRB-VL3 under Class 2 $a/v$ ground motions	234
7.26	Base shear of HDRB-VL2 and HDRB-VL3 under Class 2 $a/v$ ground motions	235
7.27	Comparison between base shear reduction of HDRB-VL2 and HRDB-VL3	236
7.28	Comparisons of base shear reduction between HDRB-	



	VL2 and HDRB-VL3 in Class 3 $a/v$ ground motions	237
7.29	Roof acceleration responses of HCPS-VL2 and HDRB-VL2 in Class 1 $a/v$ ground motions	238
7.30	Roof acceleration responses of HCPS-VL3 and HDRB-VL3 in Class 1 $a/v$ ground motions	238
7.31	Roof acceleration reductions of HDRB-VL2 in Class 1 $a/v$ ground motions	238
7.32	Roof acceleration reductions of HDRB-VL3 in Class 1 $a/v$ ground motions	239
7.33	Roof acceleration reductions of HDRB-VL2 and HDRB-VL3 in Class 1 $a/v$ ground motions	239
7.34	Ratio of RF-to-1F acceleration response of HCPS-VL2 and HDRB-VL2 in Class 1 $a/v$ ground motions	240
7.35	Ratio of RF-to-1F acceleration response of HCPS-VL3 and HDRB-VL3 in Class 1 $a/v$ ground motions	240
7.36	Roof acceleration reduction of HDRB-VL2 in Class 2 $a/v$ ground motions	241
7.37	Roof acceleration reduction of HDRB-VL3 in Class 2 $a/v$ ground motions	241
7.38	Roof acceleration reduction of HDRB-VL2 and HDRB-VL3 in Class 2 $a/v$ ground motions	242
7.39	Ratio of RF-to-1F acceleration response of HCPS-VL2 and HDRB-VL2 in Class 2 $a/v$ ground motions	242
7.40	Ratio of RF-to-1F acceleration response of HCPS-VL3 and HDRB-VL3 in Class 2 $a/v$ ground motions	243
7.41	Roof acceleration reduction of HDRB-VL2 in Class 3 $a/v$ ground motions	244
7.42	Roof acceleration reduction of HDRB-VL3 in Class 3 $a/v$ ground motions	244
7.43	Roof acceleration reduction of HDRB-VL2 and HDRB-VL3 in Class 3 $a/v$ ground motions	244
7.44	Ratio of RF-to-1F acceleration response of HCPS-VL2 and HDRB-VL2 in Class 3 $a/v$ ground motions	245

7.45	Ratio of RF-to-1F acceleration response of HCPS-VL3 and HDRB-VL3 in Class 3 $a/v$ ground motions	246
7.46	Shear stiffness of HDRB-VL2 with $\beta = 8\%$ and $24\%$	247
7.47	Shear stiffness of HDRB-VL3 with $\beta = 8\%$ and $24\%$	247
7.48	Base shear ratio of HDRB-VL2 with $\beta = 8\%$ and $24\%$ in Class 1 $a/v$ ground motions	248
7.49	Base shear ratio of HDRB-VL2 with $\beta = 8\%$ and $24\%$ in Class 2 $a/v$ ground motions	248
7.50	Base shear ratio of HDRB-VL2 with $\beta = 8\%$ and $24\%$ in Class 3 $a/v$ ground motions	249
7.51	Acceleration response ratio of HDRB-VL2 with $\beta = 8\%$ and $24\%$ in Class 1 $a/v$ ground motions	250
7.52	Acceleration response ratio of HDRB-VL2 with $\beta = 8\%$ and $24\%$ in Class 2 $a/v$ ground motions	250
7.53	Acceleration response ratio of HDRB-VL2 with $\beta = 8\%$ and $24\%$ in Class 3 $a/v$ ground motions	250
7.54	Base shear ratio of HDRB-VL3 with $\beta = 8\%$ and $24\%$ in Class 1 $a/v$ ground motions	251
7.55	Base shear ratio of HDRB-VL3 with $\beta = 8\%$ and $24\%$ in Class 2 $a/v$ ground motions	252
7.56	Base shear ratio of HDRB-VL3 with $\beta = 8\%$ and $24\%$ in Class 3 $a/v$ ground motions	252
7.57	Roof acceleration ratio ratio of HDRB-VL3 with $\beta = 8\%$ and $24\%$ in Class 1 $a/v$ ground motions	253
7.58	Roof acceleration ratio ratio of HDRB-VL3 with $\beta = 8\%$ and $24\%$ in Class 2 $a/v$ ground motions	253
7.59	Roof acceleration ratio ratio of HDRB-VL3 with $\beta = 8\%$ and $24\%$ in Class 3 $a/v$ ground motions	254
7.60	Base shear and roof acceleration reduction versus $a/v$ ratio of ground motion	255
7.61	Ratio of base shear and roof acceleration between $\beta = 8\%$ and $24\%$ versus $a/v$ ratio of ground motion	255

## LIST OF ABBREVIATIONS

1F	-	First floor
ACI	-	American Concrete Institute
ASCE	-	America Society of Civil Engineers
BS	-	British Standards
CIDB	-	Construction Industry Development Board
CIMP	-	Construction Industry Master Plan
CREAM	-	Construction Research Institute of Malaysia
CSI	-	Computer and Structures, Inc.
DOF	-	Degree of freedom
D.P.	-	Dowel pullout
EC2	-	Eurocode 2
EC8	-	Eurocode 8
FEM	-	Finite Element Model
FEMA	-	Federal Emergency Management Agency
GF	-	Ground floor
HCPS	-	HC Precast System
HCPS-QST	-	HCPS quasi static test model
HCPS-STT	-	HCPS shake table test model
HCPS-VL1	-	HCPS vertical load 1
HCPS-VL2	-	HCPS vertical load 2
HCPS-VL3	-	HCPS vertical load 3
HDRB	-	High Damping Rubber Bearings
HDRB-VL1	-	HDRB vertical load 1
HDRB-VL2	-	HDRB vertical load 2
HDRB-VL3	-	HDRB vertical load 3
IBC	-	International Building Code
IBS	-	Industrialized Building Systems

IEM	-	Institute of Engineers of Malaysia
LRB	-	Lead rubber bearing
MCE	-	Maximum considered earthquake
MDL	-	Modal distributed load
MDOF	-	Multi degree of freedom
MMI	-	Modified Mercalli Index
MRSA	-	Modal response spectrum analysis
N2Disp	-	New Nonlinear Displacement
NBCC	-	National Building Codes of Canada
N.C.C.W.	-	No concrete crushing in wall
N.D.P.	-	No dowel pullout
NEHRP	-	National Earthquake Hazard Reduction Program
NZS	-	New Zealand Standards
PCI	-	Precast/Prestressed Concrete Institute
PEER	-	Pacific Earthquake Engineering Research
PGA	-	Peak ground acceleration
PGV	-	Peak ground velocity
RF	-	Roof floor
SDOF	-	Single degree of freedom
SF	-	Safety factor
SPL	-	Single point load
TC	-	Technical Committee
TDL	-	Triangular distributed load
UBC	-	Uniform Building Code
UDL	-	Uniform distributed load
UITM	-	Universiti Teknologi MARA
UTM	-	Universiti Teknologi Malaysia

## LIST OF SYMBOLS

$\%$	-	Percent
$\alpha$	-	Parameter in pivot model
$a_{cc8\%}$	-	Roof acceleration at 8 % damping ratio
$a_{cc24\%}$	-	Roof acceleration at 24 % damping ratio
$a_g$	-	Design ground acceleration
$A$	-	Area
$\beta$	-	Damping ratio
$B_D$	-	Damping reduction factor
$c$	-	Viscous damping coefficient
$\Delta$	-	Displacement
$\Delta_r$	-	Displacement of wall at first yield loading
$\Delta_u$	-	Ultimate lateral displacement
$\Delta_V$	-	Vertical displacement
$\Delta_y$	-	Yield displacement
$\emptyset$	-	Diameter
$\emptyset_s$	-	Diameter of steel shim (plate)
$d^+$	-	Maximum lateral displacement in shear stiffness test
$d^-$	-	Maximum lateral displacement in shear test (in other direction)
$D_D$	-	Design displacement
$D_f$	-	Displacement factor
$d_z$	-	Maximum vertical displacement in compression test
$\varepsilon$	-	Concrete strain
$\varepsilon_0$	-	Concrete strain at ultimate compressive strength
$E_c$	-	Young modulus of concrete
$E_s$	-	Secant modulus of reinforcement bars
$f'_c$	-	Uniaxial concrete compressive test results

$F_{eff}(t)$	-	Effective load factor
$f_H$	-	Lateral frequency
$f_r$	-	Ultimate tensile strength of concrete
$f_{su}$	-	Ultimate strength of reinforcement bars
$f_V$	-	Vertical frequency
$f_y$	-	Yield strength of reinforcement bars
$\gamma$	-	Shear strain
$g$	-	Gravity force (= 9.81 m/s <sup>2</sup> )
$G$	-	Shear modulus
$G_{1.5}$	-	Shear modulus at 150 % shear strain
$G_{0.2}$	-	Shear modulus at 20 % shear strain
$H_r$	-	Horizontal load that causes first yield of wall
$H_u$	-	Ultimate lateral force
$H_y$	-	Lateral force causing yielding of reinforcement bars
$\{I\}$	-	Unit vector
$I_g$	-	Gross second moment area of wall
$K$	-	Bulk modulus of rubber compound
$K_1$	-	Initial shear stiffness of HDRB
$K_2$	-	Post-yield stiffness of HDRB
$K_{ed}$	-	Wall panel stiffness due to reinforcement
$K_{eff}$	-	Effective shear stiffness of HDRB
$K_H$	-	Shear (lateral) stiffness of HDRB
$K_z$	-	Vertical stiffness of HDRB
$K_v$	-	Vertical stiffness of HDRB
$L_{ed}$	-	Length of longitudinal reinforcement bars
$l_w$	-	Width of wall
$\lambda_t$	-	Tension deformability
$m$	-	Mass
$M_X$	-	Modal participation factor
$n$	-	Numbers (quantity)
$P$	-	Gravity load from top of wall
$P1$	-	Pivot point
$P2$	-	Pivot point

$P3$	-	Pivot point
$P4$	-	Pivot point
$P_{crit}$	-	Critical buckling load of HDRB
$PP1$	-	Pivot point
$PP2$	-	Pivot point
$PP3$	-	Pivot points
$PP4$	-	Pivot points
$q_0$	-	Basic behaviour factor
$q_d$	-	Displacement behaviour factor
$Q1$	-	Quadrant 1 in pivot model
$Q2$	-	Quadrant 2 in pivot model
$Q3$	-	Quadrant 3 in pivot model
$Q4$	-	Quadrant 4 in pivot model
$R_I$	-	Response modification factor
$\zeta$	-	Critical damping ratio
$S$	-	Shape factor of HDRB
$S_e$	-	Elastic response spectrum
$T$	-	Period
$T_D$	-	Design period of base isolated structure
$t_r$	-	Total rubber thickness
$V_{b8\%}$	-	Base shear of base isolated structure with 8 % damping ratio
$V_{b24\%}$	-	Base shear of base isolated structure with 24 % damping ratio
$V_{Eb}$	-	Elastic base shear
$\omega_V$	-	Vertical angular frequency
$W$	-	Self-weight of wall panel
$\ddot{x}$	-	Relative acceleration
$\dot{x}$	-	Relative velocity
$x$	-	Relative displacement
$\ddot{x}_g$	-	Ground acceleration
$\theta$	-	Drift ratio

**LIST OF APPENDIX**

<b>APPENDIX</b>	<b>TITLE</b>	<b>PAGE</b>
A	List of Publications	277



## **CHAPTER 1**

### **INTRODUCTION**

#### **1.1 General**

Cost of construction in the Asian countries throughout 2011 has been observed to increase tremendously as compared to the Western countries, and it is expected to escalate over the next few years. Globally, this will sooner or later affect the booming of construction prices over the world (Sugandy, 2012). Table 1.1 ranks the countries position in descending orders on rising construction cost. The annually published International Construction Cost Comparison report found that shortage in skilled labours is the main root causing such a high construction cost. Contractors around the world are in difficulty in getting affordable and adequate skilled workers for their jobs. In Southeast Asia alone, there are 10 countries which are listed in the top 50 in the global rankings on rising construction cost. To add matter worse, most of these nations such as Japan, Thailand, Vietnam, etc. are located in the seismic regions. Reducing construction cost through compromising structural materials and techniques needs to be engineered.

In response to such high increment of construction cost, the government of Malaysia have been strongly encouraging fellow builders to utilize Industrialized Building System (IBS) as dominant components especially in large constructions. In Malaysia, the local government had long ago foreseen the needs of transforming the conventional cast-in-situ construction practices which are being widely practiced in the current construction sector into the technique of IBS. Besides reduction in construction material wastage, requiring less volume of building materials, creating

cleaner, safer, more organized construction site and shortening project completion time, one of the main reasons in which the government concerns the most is the utilization of IBS construction method will reduce greatly the reliance of the construction sector in employment of foreign-unskilled workers. Currently, billions of Ringgit Malaysia is flowing out of the country due to the heavy employment of foreign workers especially in the construction sector (CIDB, 2003a). The registered foreign workers occupied 75 % of total labours available in the construction industry as of 2003. Henceforth, the government has targeted to reduce the dependence of the construction sector in employment of unskilled-foreign workers to only 15 percent by the year 2009.

**Table 1.1:** Rising of construction cost particularly in Southeast Asia countries

2011			2010
Asia ranking	Global ranking	Country	Country
1	4	Japan	Japan
2	19	Hong Kong	Hong Kong
2	19	Singapore	Singapore
4	24	South Korea	South Korea
5	31	Macau	Thailand
6	40	Thailand	China
7	47	China	Malaysia
8	49	Malaysia	Taiwan
8	49	Philippines	India
8	49	Vietnam	Sri Lanka
11	52	Indonesia	
12	54	Taiwan	
13	55	India	
13	55	Sri Lanka	

The term 'Industrialized Building System' (IBS) refers to a construction process of a building or other structure where its structural components are either wholly or partly being prefabricated as well as manufactured off-site for assembling and installation at building sites. Prefabricated steel formwork systems (e.g.

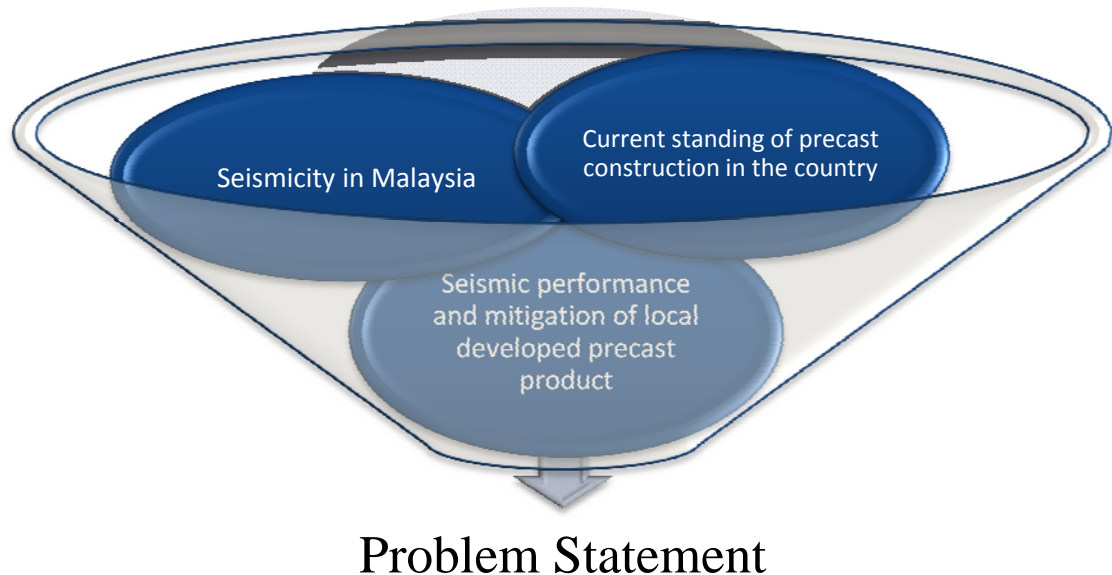
permanent metal decks and tunnel forms), steel structural systems such as hot-roll manufactured steel beams, columns or trusses and precast concrete elements are among some of the popular IBS products. Although steel structures are relatively lighter in mass, it also possesses higher overall cost. Hence, expensive metal cladding systems are often required in order to enhance durability and meeting certain architectural demands. Precast concrete systems, on the other hand seems to be more economic, practical and durable, especially with the prices of steel which fluctuates according to supply and demand.

The utilizations of precast concrete as construction method had been widely practiced by many countries such as the Western Europe, Britain, California and Turkey. Taking Turkey as an example, most of the industrial structures and facilities were precast frame buildings since the introduction of precast concrete construction methods to the country in the 60s (Posada and Woods, 2002). Unfortunately, despite the advantages reflected in its construction procedures and processes, many of the precast structures collapsed during series of earthquakes in Turkey throughout the year of 1999. Apart from Turkey, some other examples which include the completed precast concrete structures are the Olympic Stadium (Li *et al*, 1998) in San Pedro Sula, Honduras which was completed in November 1997, and the B.C. Rail Yard Control Tower (Gerald, 1998) in British Columbia, completed in February 1995.

The introductory of precast concrete structural systems has, over the years, shown advantages in concrete structure constructions such as improved quality control, easier management of construction schedule, efficient use of materials and project cost reduction (Megally *et al*, 2002). The conventional wet concrete construction techniques or some called it the cast in-situ construction methods, which relatively requires more construction space at sites, high dependence in employment of unskilled-foreign workers, longer pending time for concrete curing and hardening process, and poorer quality control had seems to be replaced at a slower rate, but at a wide scale by precast concrete structural systems. However in the following discussion it was found that this was not the case in Malaysia.

## 1.2 Problem Background

The problem background that leads to the motivation of this study can be categorized into three different parts as shown in Figure 1.1. Firstly, the current status of precast construction in Malaysia was studied. Then, the awareness of seismicity in the country was reported. Together, these two factors would determine the importance to investigate and improve the seismic performance of locally developed precast concrete structural system and thus, the problem statement of this study is formulated.



**Figure 1.1** Formulation of problem statement through related problem background

### 1.2.1 Precast Construction in Malaysia

Despite the effort of the Construction Industry Development Board (CIDB) under the Construction Industry Master Plan 2006-2015 (CIMP 2006-2015), as well as the 2008 law enforcement from government to make it compulsory for large government projects to utilize at least 70 % of IBS product, its level of acceptance was still reportedly low (Hassim *et al*, 2009). Although many large and important projects in Malaysia such as the Petronas Twin Towers, one of the tallest buildings in

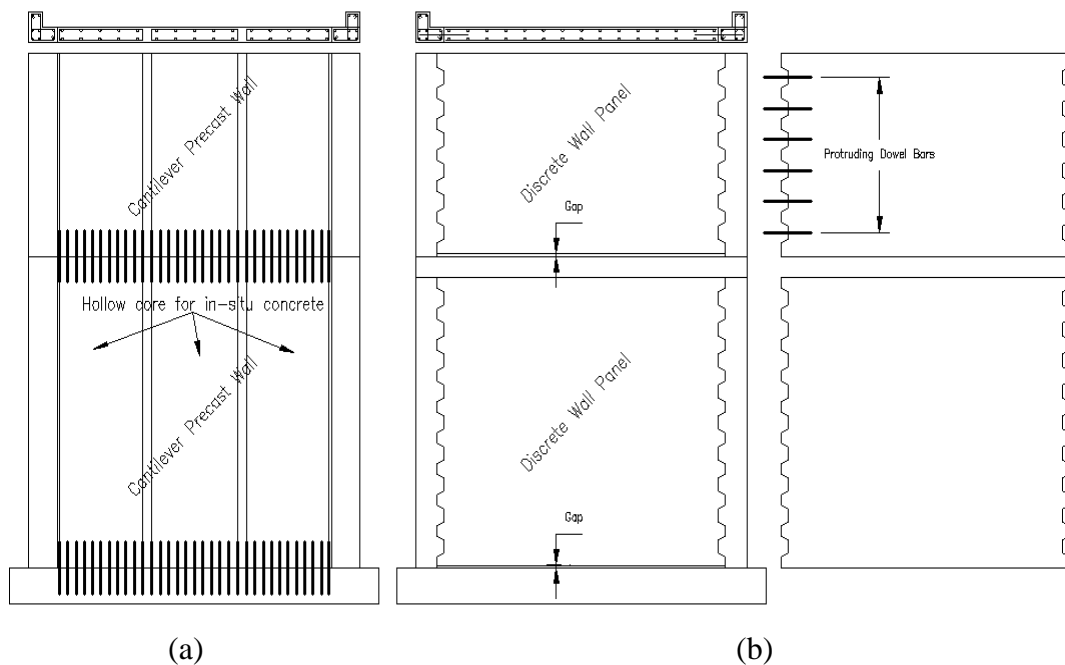
the world, Kuala Lumpur Tower, and Kuala Lumpur International Airport (KLIA) were constructed using the IBS method by most of the world class Malaysian developers, IBS is still not the primary construction method over the conventional cast-in-situ system especially in residential housing area projects.

A survey conducted by the Construction Industry Development Board (CIDB) in 2003 had revealed that the usage level of IBS in the construction sector was as low as only 15 percent (CIDB, 2003b). Therefore, to enhance the competitiveness of local construction industry in the international level, the government had issued Treasury Circulars (*Surat Pekeliling Perbendaharaan*) at the end of year 2008. The official letter had made it compulsory for large government construction projects to use at least 70 percent IBS components with effect from the year 2010 onwards.

With this new regulation from the government, it will soon be the epoch of IBS technique deployment in the construction sector in Malaysia, overriding the conventional cast-in-situ methods. As most of the large and important projects are government based, so either willing or not, the players in the construction sector will eventually heed to this call in order to qualify themselves to participate in the bidding of public projects. As a result, it becomes significant and obvious that there are vital needs for the development of researches regarding the IBS techniques to value-add the 2020 vision of the government. However, as the market is currently competitive in the nation and there is no unique precast technology owned by local manufacturers, most of them required heavy subsidy from government to keep the business running (CIDB, 2011) which would not be beneficial to both parties in the long run.

Hence, it has become important for the private industry to initiate relevant researches regarding prospective precast system that best suits the needs of local industry. Among them is the HC Precast System (Figure 1.2(b)). The system, having its patent granted in 2011 or in short HCPS comprises load-bearing precast concrete wall panels that are connected only to the supporting cast-in-place column at both ends. This terminology will be used throughout this entire thesis. The wall panels eliminated the necessity of having brick wall and beam element. There is no horizontal connectivity provided between the top and bottom wall to restrain it from

sliding against each other. Due to the relatively humid and wet tropical climate of the region, wet interface provides a better water resilient capability for precast structures in the country (Hamid, 2009). The proposed precast concrete wall structure is replacing the existing cantilever wall system (Figure 1.2(a)). The cantilever wall system was normally made of hollow-core wall sections. The wall panels on top were connected to the bottom wall through insertion of heavier reinforcement and concreting at site. This cantilever wall system has been said to become unpopular among builders in recent years due to involvement of relatively heavier site works to fill in the hollow-core sections between the walls (Elliot, 2002).



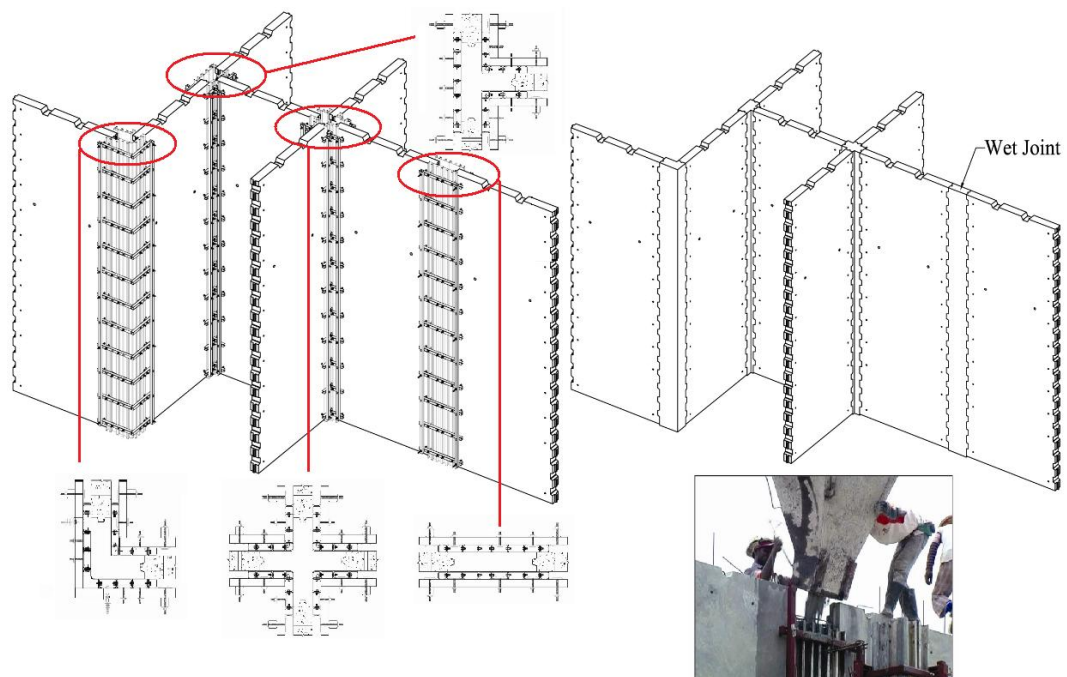
**Figure 1.2** (a) Cantilever wall system and (b) HC precast wall system (HCPS)

The precast wall panels are connected to the supporting columns located at both ends through series of in-built shear keys and also dowel bars (Figure 1.3) protruded alongside the vertical edges of the wall panels. Wet joints would then be cast at site, forming the columns which also at the same time served as vertical connections that held the wall in place (Figure 1.4). The key innovative component of HCPS was that the wall panels were disconnected along their horizontal connection which made the site work easier and faster. The amount of steel works required at site was also reduced significantly. These two factors were the main reasons causing the conventional cantilever precast wall system to lose its popularity

over the years. Detail of the construction and assembly process of HCPS can be found later in Chapter 4.



**Figure 1.3** Shear keys and dowel bars alongside vertical edges of wall panel



**Figure 1.4** Wet joint casting at site forming columns as well as vertical connections

History and development of shear key connection in precast wall could be traced back to as early as in the 80s' studied by Chakrabati (1988). In BS8110:1997-Part 1 (British Standards Institution, 1997), a small portion of design specifications

of castellated joints or shear keys was included. The precast construction industry has then shifted to dry connection method such as unbonded post-tensioned walls (Kurama, 2005). The main reason was the requirement of timber formwork usage during casting of wet joint which would be costly as most timber formwork had limited reusable time span. Until recently in the year 2007 when HC Precast System had patented a type of modular mould (Figure 1.5) that is reusable for shear key casting plus the key feature of extremely effective water-proofing by HCPS, the system had been implemented in constructing more than a thousand units of residential housing as well as commercial buildings over the country. Detail of invention of the reusable modular mould can be found in Tiong *et al* (2011).

Nevertheless, the system is not designed for seismic resistant. As Malaysia is now moving forward in formulating local seismic design guidelines based on Eurocode 8 (CEN, 2003), it has become a necessity for the system to be analyzed accordingly in terms of seismicity effects.



**Figure 1.5** Innovated modular moulds for wet-joint grouting at site



### 1.2.2 Seismicity in Malaysia

Currently, the common design and construction practices in Malaysia have often ignored and neglected the consideration of seismic effects towards the stability of structures especially in the implementation of lower cost projects such as residential estates, erection of relatively lower buildings, and etc. as the history of earthquakes in the country have not been intense. Needless to say, the constructed precast concrete buildings or structures were never tested to resist earthquake loadings. The conventional reinforced concrete structures also faced detailing problem when it comes to seismic design. Very often, reinforcement congestion occurred at joints which caused impracticality of the design practice. Nevertheless in actual fact, the country may not be as earthquake-free as majority of its public regarded.

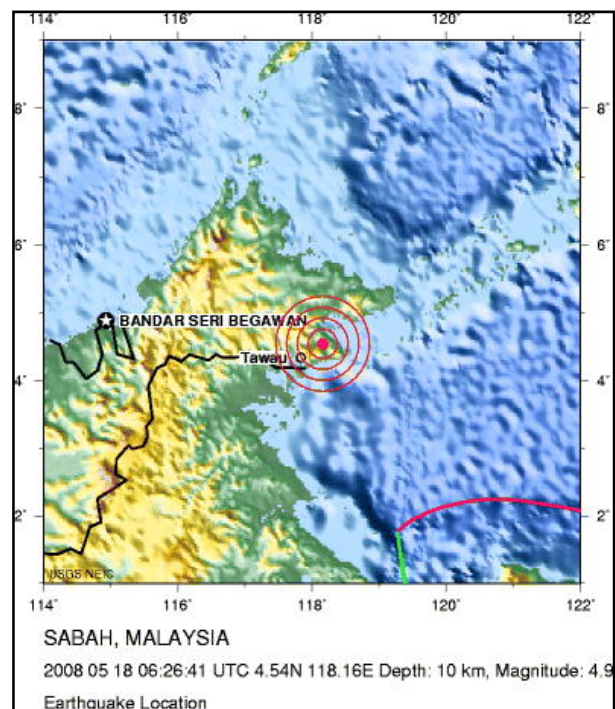
Despite the geographical location of Malaysia at a stable part of the Eurasian Plate, the existence of three major earthquake faults with a distance of a few hundred kilometers away from the country had often caused tremors to be felt in some of the places especially by the residents of tall buildings in Peninsular Malaysia. These three earthquake faults are the Sumatran Subduction Zone, the Sumatran Strike Slip Fault with both of them respectively measured about 600 km and 400 km away from Peninsular Malaysia, and another slip fault near to Tawau, at the eastern district of Sabah state. Over the years, the Meteorological Department of Malaysia (*Jabatan Meteorologi Malaysia*) has recorded numerous earthquake events with a wide range of intensities. Table 1.2 reflects the list of recorded past earthquake events reported in Malaysia obtained from the Meteorological Department of Malaysia.

**Table 1.2:** Recorded past earthquake events in Malaysia up to September 2007

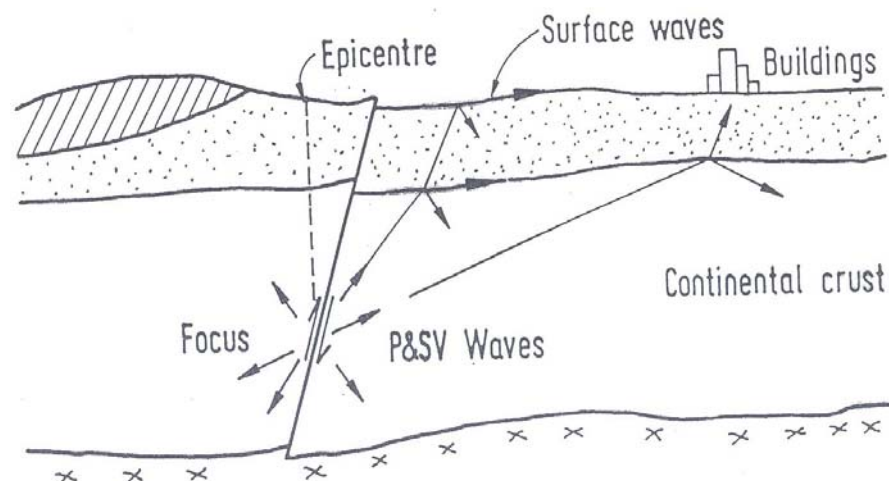
State	Event Frequencies	Earthquake Maximum Intensity Observed (based on Modified Mercalli Scale)
Peninsular Malaysia (Events from 1909 till September 2007)		
Johor	27	VI
Kedah	13	V
Kelantan	3	IV
Malacca	15	V
Negeri Sembilan	7	V
Pahang	7	III
Penang	36	VI
Perak	22	VI
Perlis	2	IV
Selangor (incl. KL)	46	VI
Terengganu	1	IV
Sabah (Events from 1923 till September 2007)		
Sabah	27	VII
Sarawak (Events from 1923 till September 2007)		
Sarawak	5	V

The state of Sabah has experienced the strongest earthquake intensity of MMI Scale VII when compared to the other remaining states of the country as it is located relatively near to an active earthquake fault. According to an earthquake report from USGS, a 10 km deep earthquake having the Magnitude of 4.9 Richter Scale occurred on Sunday, 18<sup>th</sup> May 2008 in Sabah region. The epicenter as shown in Figure 1.6 was 45 km from Tawau and 145 km away from Sandakan. In the Peninsular Malaysia, the nearest active earthquake faults are located a few hundred kilometres away. According to Balendra (1993), the low frequency seismic waves generated by the Sumatran earthquakes are capable to propagate and travel very long distances before reaching the Singapore-Malaysia region due to the nature of the long period waves which is more vigorous to energy dissipation while the high frequency waves are dissipated rapidly during proliferations. This mechanism, shown in Figure 1.7 is identified as far-field effects of earthquakes. The arrival of the amplified waves as they travel upward though the relatively softer soil near the earth surface causes resonance in buildings and the movements of the buildings shaking could be felt by the residents (Balendra and Li, 2008). This is the main reason for residents particularly in higher buildings to experience minor tremors over the years.

At the time of this thesis writing, the Technical Committee (TC) formed by the Institute of Engineers of Malaysia (IEM) is looking into the proposal of national annex for Eurocode 8 (EC8) in Malaysia. One of the major decisions would be deciding on the ground acceleration  $a_g$  for Malaysia. Currently, there are three different  $a_g$  levels to be considered, 0.05 g, 0.075 g and 0.1 g. Therefore when the map is officially released, the impact on HCPS needs to be investigated to avoid large amount of retrofitting work in the future.



**Figure 1.6** Location of epicenter of the 18<sup>th</sup> May 2008 earthquake in Sabah Region



**Figure 1.7** The far-field effects of earthquakes (Balendra and Li, 2008)

### 1.2.3 Seismic Performance and Mitigation of HCPS

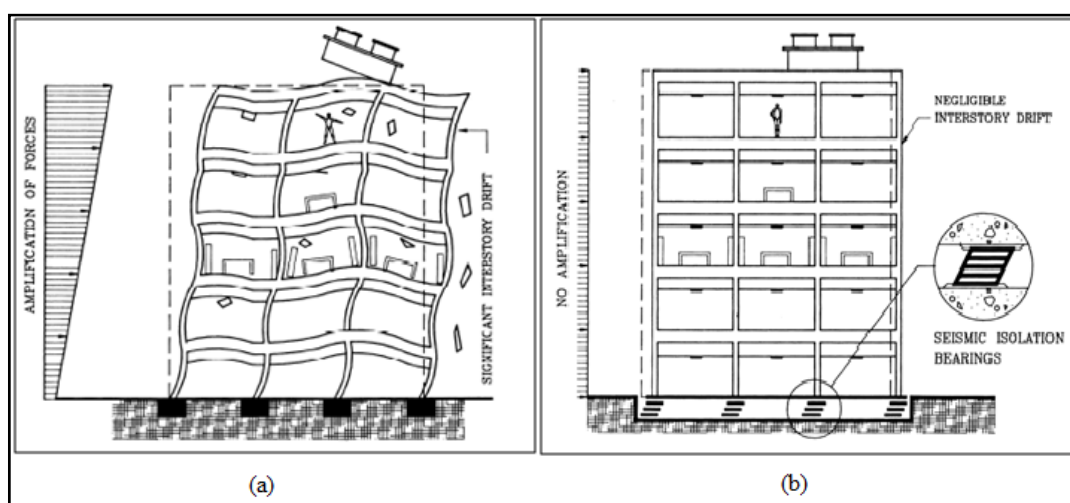
The main concern of the manufacturer of HCPS and the industry would be how the precast system would behave due to ground acceleration, and the effect of future implementation of Eurocode 8 (EC8) design code in the country onto the system. The precast concrete structure is only as strong as its weakest link or element when it comes to deal with seismic responses. In the conventional cast-in-situ construction, the structural continuity is inbuilt and will mechanically follow as the construction proceeds. Dissimilar to the conventional monolithic concrete structures, the site erection works of precast concrete structures involves of assembling, connecting and jointing numerous pieces of discontinued and discrete precast concrete panels to form the whole building structural components. The interfaces connecting the precast concrete elements together will determine the overall performance and stiffness of the precast concrete systems.

Under earthquake loading, the connection or joint of precast elements will be the most critical area to resist the lateral seismic reaction forces (Dowrick, 1987; Xiao *et al*, 2013 and Babu *et al*, 2013). The behaviour and characteristics of precast joint under seismic effects are rather complex and must be seriously accounted for in the design stage (Lu *et al*, 2012). This is where the critical problem arises. A good design must not only be able to withstand the required loadings, but must also be practical and possible to construct. In addition to that, it has been shown by Bljoger (1988) that for protruded reinforcing bars or dowel connection, the difference between a single bar and a U-shaped bar is not significant. This makes proper reinforcement of such dowel connection to be perfectly rigid difficult to construct and not fully established.

Most people have the common misconception that precast concrete structures are incapable to provide adequate seismic resistance until recent improvements in research development have introduced efficient precast structural systems that are capable of maintaining structural integrity under cyclic loading, among which are the hybrid post-tensioned frame and unbonded, post-tension jointed precast walls (Priestley *et al*, 1999). Therefore, it became questionable whether the non-earthquake

designed HCPS is able to withstand earthquake loading, and to make matter worse when the EC8 for Malaysia is released by IEM Technical Committee in the near future, will HCPS be deemed satisfactory or if there are any changes required to the original system?

The conventional seismic resistance design approach posed a challenge for designers to obtain a balance between minimizing both floor accelerations and interstory drifts at the same time in the designed structures (Mayes and Naeim, 2001). It is understood that excessive interstory drifts can be eliminated by constructing a stiffer building. However, a stiffer building, which is now becoming less flexible, will cause high floor accelerations. On the contrary, a flexible structure, though it will lead to lower floor accelerations causes large interstory drifts. Both of these two factors cause greater force demand from either the building structural component or its contents within (Figure 1.8). The presence of wall in HCPS has increased the overall lateral stiffness of the structure as compared to a bare frame system. As it would be revealed in the later part of this study particularly in Chapter 6 that the acceleration responses of HCPS were significantly higher than the ground acceleration due to such attribute and the other half of this study is focused on using locally produced high damping rubber bearing (HDRB) as base isolation system for seismic mitigation of HCPS.



**Figure 1.8** (a) Large interstory drift and disruption to a fixed base building contents and (b) Mitigation of seismic force by base isolation system (Mayes and Naeim, 2001)

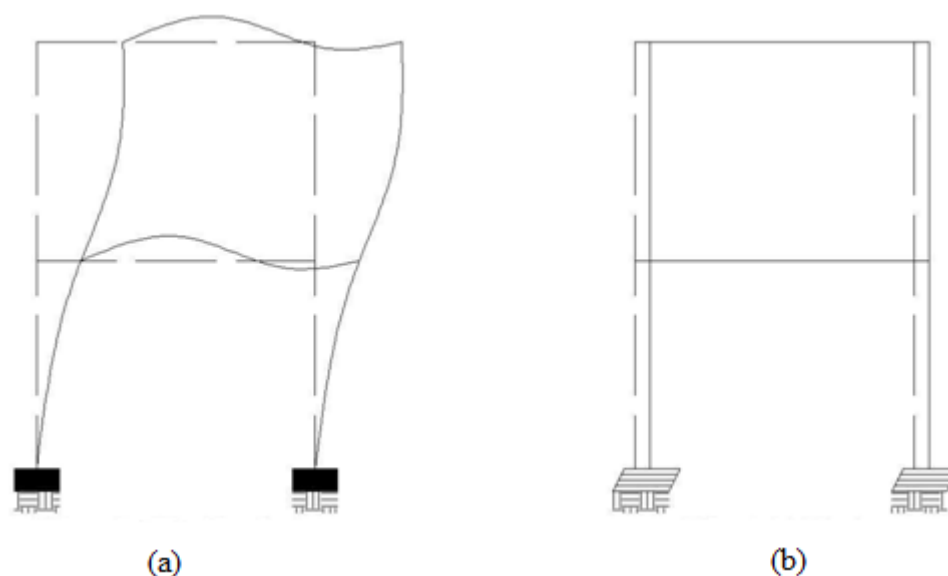
Earthquake itself does not kill. It is the structure that collapse costs the lives of many. The earthquake forces are generated within the structural system of a particular building due to the inertia of the structure when it responded to the ground dynamic motion. In other words, the heavy mass of the building which reacts in the opposite direction from the ground movement causes effective base shear as the restraining force transmitted from the ground to the top of structure. With such understanding of earthquake force transmission, separating the structure from ground could be an alternative to minimize such inertia response due to ground movement, which is termed as seismic base isolation. Thus, seismic base isolation had been proposed, studied and investigated by numerous researchers all over the world over the past decades as an alternative to the conventional ductility design concept. Although the earliest recorded history of seismic base isolation was as early as 1909, the growth of its application was not too apparent only until early 1980's with the development of multilayered elastomeric rubber bearing base isolators (Naeim and Kelly, 1999).

There are varieties of devices available for seismic isolation of structures such as rollers, friction slip plates, sleeved piles and rocking foundations. Nevertheless, an elastomeric rubber bearing appears to be one of the most practical and widely used seismic base isolation systems (Forni, 2010; Warn and Ryan, 2012). A typical elastomeric rubber bearing, or sometimes termed as high damping rubber bearing (HDRB) or laminated rubber bearing is shown in Figure 1.9.



**Figure 1.9** High damping rubber bearing (HDRB) showing internal layers

The simple basic concept for seismic base isolation is just to decouple the superstructure from the horizontal loading of ground motion as shown in Figure 1.10. This is achieved through introducing an interface with relatively low horizontal stiffness between the foundation and the base of the superstructure. This interfacing element is the so-called base isolation system. The main purpose of the isolation system is to increase the natural period of a rigid structure as a rigid structure usually possesses very short first mode period. Thus, it creates a structure with very much lower fundamental frequency compared to its fixed-base frequency and also the predominant frequencies of the ground motion.

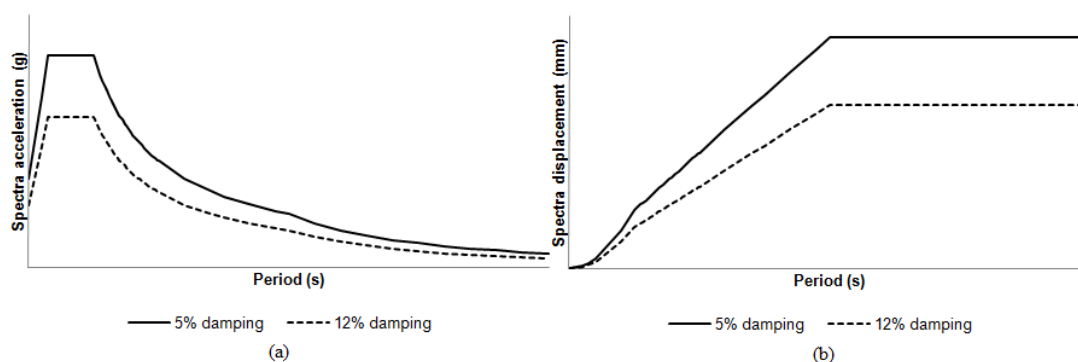


**Figure 1.10** Structural response of (a) fixed base and (b) base isolated structure

The main principle of seismic isolation is to prolong the period of the isolated structure. Logically, it works effectively for short structures as their period is usually very small, typically less than 1 second. Meanwhile, the natural period increases with increment of the structure's height. For very tall structure where the natural period is long enough to attract low earthquake forces, seismic isolation is considered redundant.

The second school of thought regarding seismic base isolation is the reduction of seismic force demand through providing additional damping capability of the vibrating system, besides prolonging the fundamental period. In linear

equivalent static analysis of base isolation system using the constant velocity approach, the reduction of spectra acceleration (Fig 1.11(a)) and displacement (Figure 1.11(b)) is apparent when damping ratio increases. In countries like Japan, China and Turkey, the earthquake engineering committee required at least 24% damping ratio to be used in base isolation system. According to EN15129 (CEN, 2007), elastomeric rubber bearing possessing damping ratio above 6 % is deemed as HDRB, and typical damping of HDRB is in the range of 8 to 12 percent depending on the shear modulus of rubber compound used. This leads to development of lead rubber bearing and other mechanical damping devices to go along with HDRB. This not only causes very expensive base isolation system but to some extent compromising the durability and strength of rubber compound by altering the vulcanization process to increase damping value which is widely practiced in Japan.



**Figure 1.11** Damping ratio effect on spectra (a) acceleration and (b) displacement

### 1.3 Problem Statement

HCPS is considerably a new structural configuration having its patent granted in the United States and Malaysia in the year 2011. The system is not covered in the EC8 currently. Although the design and analytical tools for normal precast infill panels were not new (Rath, 1977; Bljger, 1988; Elliot, 2002; and Mainstone, 1972), the configuration of HCPS is different from conventional infill structure and therefore, the performance of such system is not established yet particularly in terms of earthquake loading. Thus, a reliable tool or model to analyse the structure is not available especially in the nonlinear response region. This leads to questionable



performance of the system when EC8 is implemented in Malaysia in the near future. With the national annex of EC8 for Malaysia to be released soon, would HCPS be deemed satisfactory for the country due to seismic design provision or retrofitting work is needed?

Secondly, the structural vulnerability of HCPS under dynamic loading such as earthquake remained unknown as mentioned earlier that the system was not covered by EC8. The only known fact according to EC8 was that HCPS belonged to the DCL category. However, information regarding the resistance of the HCPS structural system to earthquake ground excitations was unavailable.

Thirdly, the presence of wall panels would logically increase the stiffness of HCPS in its lateral direction, causing the structure to possess shorter predominant period. The rule of thumb in seismic behaviour is stiffer structure attracts higher floor acceleration. Therefore, the second part of this study also included application of base isolation system using elastomeric rubber bearings to investigate its efficiency in reducing floor accelerations. Since HCPS would be used ideally for low-rise residential housing or commercial shop-houses which would be relatively lighter compared to most base isolated structures such as towers, hospital buildings, and bridges which were heavier in mass, the capability of the base isolator to meet required lateral displacement became questionable (Naeim and Kelly, 1999). In other words, the HDRB becomes unstable when the imposed vertical load gets smaller if the designed lateral displacement remains the same. Investigation was also carried out to examine the rationale behind choosing higher damping ratio of 24% in the design of base isolation system for HCPS as compared to the typical damping ratio obtained from natural HDRB.

#### **1.4 Research Aim and Objectives**

This study is aimed to promote and enhance the usage of locally developed HCPS as alternative for fast as well as economic building system to both local

industry and abroad, including earthquake prone regions. The main objectives of the research will be as follow:

- a. To obtain capacity curve of HCPS from hysteresis behaviour in order to evaluate the behaviour factor of the system for seismic design
- b. To investigate structural vulnerability of HCPS in terms of roof acceleration and drift demands under earthquake loading
- c. To study reduction of base shear and acceleration response of base isolated HCPS by normal HDRB and also HDRB with different damping ratios

### **1.5 Scopes of Work and Research Boundaries**

The present investigation comprises 50 percent laboratory as well as experimental studies and the other 50 percent includes finite element analysis and results interpretation. The research scopes cover the following areas, fields and tasks:

- a. Performing laboratory test of large-scale HCPS under lateral-cyclic loading at CREAM's laboratory
- b. Performing scaled-down shake table test of HCPS using recorded ground motion data obtained from Pacific Earthquake Engineering Research Center (PEER) ground motion database (PEER, 2010)
- c. Proposing finite element model of HCPS for both lateral-cyclic loading condition and ground excitations
- d. Verification and calibration of the proposed finite element model with laboratory results
- e. Obtaining global capacity curve of HCPS through pushover analysis with various lateral loading patterns as recommended in Eurocode 8
- f. Investigating the performance point of HCPS under local seismicity of Malaysia
- g. Designing and manufacturing of high damping rubber bearings (HDRB)

to elongate the fundamental period of base isolated HCPS to 2.5 s

- h. Performing laboratory test of the HDRB to obtain hysteresis loops of force-deformation to be used in nonlinear time-history analysis of base isolated HCPS with 33 earthquake records
- i. Feasibility of applying proposed base isolation as seismic mitigation of HCPS would be investigated

The framework of this study would be conducted within the following boundary and limitations:

- a. It is worth to mention that this study focused only on HCPS as one of the possible types among many other components of IBS.
- b. The prototype HCPS was designed accordance to BS8110: 1997 following standard consultant practice and vetted by qualified industry experts which was also later checked by the author according to Eurocode 2 (CEN, 2002)
- c. To keep the structural geometry unchanged throughout the study, the number of stories of HCPS was kept to be not more than two stories which would otherwise required larger column sections to be used.
- d. This study classified the strong ground motion data into three intensity groups of low, normal and high based on the *PGA/PGV* ratio of the time history (Zhu *et al*, 1988; NBCC, 1985; Elnashai and McClure, 1996).
- e. The laboratory shake table test was performed only with fixed-base HCPS in order to verify the proposed finite element model (FEM) of the connection system, while the isolation system test was only performed by individually testing the elastomeric rubber bearing due to the well-established modelling technique for the base isolation component in SAP2000 (CSI, 2010; Naeim and Kelly 1999).
- f. The thickness of HCPS was kept at 150 mm, which was used in construction of most residential housing and shop houses within the country.
- g. It is worth mentioning that while it is in the scope of this study to perform investigation on the established current construction sequence of HCPS in

terms of its performance under seismic loading, the study does not cover the optimization of its structural system design contained in the Damage Avoidance or Capacity Design for the system. Improving the connection detail of the precast wall system (HCPS) is not within the scope of this study.

## **1.6 Research Significance**

Significance of the study is achieved by meeting all the listed research objectives listed earlier. Thus, the performance of HCPS subjected to seismic loadings either through dynamic or quasi-static excitation is established. In addition to that, the effectiveness of mitigating earthquake effect particularly in reducing floor acceleration through HDRB as base isolation is also ascertained. Detail discussion and findings can be found in relevant chapters contained within this thesis.

## **1.7 Thesis Layout**

This thesis report is divided into eight main chapters, with each chapter having their respective major topics. Chapter 1 covers the introduction of the thesis. Chapter 2 presents literature review in several aspects related to this study including brief history of past researches, followed by the state-of-the-art works done by other authors. In Chapter 3, theories concerning the background of relevant subject matters such as dynamic performance of precast wall and base isolated system, laboratory test procedures as well as code requirement on modelling of precast wall and base isolation. The methodology of this study will be reported in Chapter 4. Chapter 5 presents the verification of finite element modelling used in this study through laboratory lateral cyclic loading test of 2-storey full scale HCPS prototype and shake table test of 1:3 scaled down model from the prototype building. Subsequent chapter covers the seismic performance of fixed base HCPS. The behaviour of seismically base isolated HCPS will be presented in Chapter 7. The final chapter, Chapter 8 comprises summary, conclusions and recommendations for future work.

## REFERENCES

- ACI 318-05. (2005). *Building Code Requirements for Structural Concrete*. New York: American Concrete Institute
- Adnan, A., Hendriyawan, Marto, A. and Irsyam, M. (2005). Seismic Hazard Assessment for Peninsular Malaysia Using Gumbel Distribution Method. *Jurnal Teknologi*. 42(B), 57-73.
- Ahmadi, H.R., Fuller, K.N.G. and Muhr A.H. (1995). Design and Performance of High Damping Natural Rubber Base-Isolators. *Proceedings 2<sup>nd</sup> International Conference on Seismology and Earthquake Engineering*, Tehran.
- Arturo, T.C. and Miguel, A.P.O. (2006). Design Displacements for Base Isolators Considering Bidirectional Seismic Effects. *Earthquake Spectra*. 22(3), 803-825.
- ASCE, American Society of Civil Engineers. (2006). *Minimum Design Loads for Buildings and other Structures*. US: American Society of Civil Engineers.
- Babu, V.G.R., Nakulesh, Siddhartha, P., Rao, A.V. and Kumar, B.S.C. (2013). Study on prefabricated concrete beam and column connections. *International Journal of Applied Sciences, Engineering and Management*. 2(2), 41-45.
- Baker, W.E., Westine, P.S. and Dodge, F.T. (1991). *Similarity Methods in Engineering Dynamics: Theory and Practice of Scale Modeling*. Oxford: Elsevier.
- Balendra, T. (1993). *Vibration of Buildings to Wind and Earthquake Loading*. London: Springer-Verlag
- Balendra, T. and Li, Z. (2008). Seismic Hazard of Singapore and Malaysia. *Electronic Journal of Structural Engineering*. Special Issue, 57-63
- Beyer, K. (2013a). *Quasi-Static Cyclic Testing*. Unpublished note, Ecole Polytechnique Federale De Lausanne.
- Beyer, K. (2013b). *Shake Table Testing*. Unpublished note, Ecole Polytechnique Federale De Lausanne.

- Bljoger, F. (1976). Determination of Deformability Characteristics of Vertical Shear Joints in Precast Buildings. *Building and Environment*. 11, 277-289.
- Bljoger, F. (1988). *Design of Precast Concrete Structures*. West Sussex, England: Ellis Horwood.
- Braga, F. and Laterza, M. (2004). Field Testing of Low-Rise Base Isolated Building. *Engineering Structures*. 26(11), 1599-1610.
- Bridgestone (2013). *Seismic Isolation Product Line-up*. [Brochure]. Japan: Bridgestone.
- British Standards Institution (1997). *BS 8110: Structural Use of Concrete. Part 1- Code of Practice for Design and Construction*. London: British Standards Institution.
- BSSC (2003). *National Earthquake Hazards Reduction Program Recommended Provisions for the Development of Seismic Regulations for New Buildings and Other Structures*. Washington, DC: Building Seismic Safety Council.
- Canbay, E., Ersoy, U. and Ozcebe, G. (2003). Contribution of Reinforced Concrete Infills to Seismic Behavior of Structural Systems. *ACI Structural Journal*. 100(5), 637-643.
- CEN (2002). *Eurocode 2: Design of Concrete Structures – Part 1: General Rules and Rules for Building*. London, UK: British Standards Institution.
- CEN (2003). *Eurocode 8: Design of Structures for Earthquake Resistance - Part 1: General Rules, Seismic Actions and Rules for Buildings*. London, UK: British Standards Institution.
- CEN (2005). *BS EN 1337-3:2005 Structural Bearings – Part 3: Elastomeric Bearings*. London, UK: British Standards Institution.
- CEN (2007). *EN 15129: Anti Seismic Devices*. London, UK: British Standards Institution.
- Cholewicki, A. (1971). Load bearing capacity and deformation of vertical joints in large panel buildings. *Building Science*. 6(4), 163-184.
- Chopra, A.K. (2007). *Dynamics of Structures – Theory and Applications to Earthquake Engineering*. New Jersey, US: Pearson Prentice Hall.
- CIDB (2003a). *Industrialised Building Systems (IBS) Roadmap 2003-2010*. Unpublished note, Construction Industry Development Board.
- CIDB (2003b). *IBS Survey 2003*. Malaysia: Construction Industry Development

Board.

- CIDB (2011). *Proceedings of 6<sup>th</sup> IBS Roundtable Workshop: Experiences and Lesson Learnt on Industrialized Building System (IBS) Construction in Malaysia*. Malaysia, CREAM: Construction Research Institute of Malaysia.
- Chakrabati, S.C. (1984). *Static and Dynamic Behavior of Prefabricated Jointed Panels*. Ph.D. Thesis. University of Roorkee, India.
- Chakrabati, S.C., Nayak, G.C. and Paul, D.K. (1988a). Shear Characteristics of Cast-in-Place Vertical Joints in Story High Precast Wall Assembly. *ACI Structural Journal*. 85(1), 30-45.
- Chakrabati, S.C., Nayak, G.C. and Paul, D.K. (1988b). Structural Behavior of Prefabricated Shear Walls. *Journal of Structural Engineering*. 114(4), 856-868.
- Chiang, J. (2011). *Two-day Eurocode 8 Seminar in Malaysia*. Unpublished note, Institute of Engineers of Malaysia.
- Chiang, J. and Hee, M.C. (2008). Technical Review of JKR's Handbook on Seismic Design Guidelines for Concrete Buildings in Malaysia. *Jurutera*, March, 26-28.
- Chopra, A.K. and Goel, R.K. (2001). A Modal Pushover Analysis Procedure to Estimate Seismic Demands for Buildings: Theory and Preliminary Evaluation. Unpublished note, Pacific Earthquake Engineering Research Center.
- Christiansen, J.V. (1973). Analysis of lateral load resisting elements. *PCI Journal*. November-December, 54-71.
- Chung, W.J., Yun, C.B., Kim, N.S. and Seo, J.W. (1999). Shaking Table and Pseudo-dynamic Tests for the Evaluation of the Seismic Performance of Base-Isolated Structures. *Engineering Structures*. 21(4), 365-379.
- CSI (2010). *CSI Analysis Reference Manual for SAP2000, ETABS and SAFE*. Unpublished note, Computers and Structures Inc.
- Desayi, P. and Krishnan, S. (1964). Equation for the Stress-Strain Curve of Concrete. *Journal of the American Concrete Institute*. 61, 345-350.
- Divan, M. and Madhkhan, M. (2011). Determination of behaviour coefficient of prefabricated concrete frame with prefabricated shear walls. *Procedia Engineering*. 14, 3229-3236.
- Dove, R.C. and Bennett, J.G. (1986). *Scale Modeling of Reinforced Concrete Category I Structures Subjected to Seismic Loading*. Los Alamos: Los Alamos National Laboratory.

- Dowell, R.K., Seible, F. and Wilson, E.L. (1998). Pivot Hysteresis Model for Reinforced Concrete Members. *ACI Structural Journal*. September-October, 607-616.
- Dowrick, J.D. (1987). *Earthquake Resistant Design: for Engineers and Architects*. (2<sup>nd</sup> ed.) New York: John Wiley and Sons.
- Eastern Pretech (2010). *Presentation on Structural Precast IBS Components in Building Industries*. Unpublished note, Eastern Pretech.
- Eligeliausen, R., Popov, E., and Bertero, V. (1983). Local Bond Stress-Slip Relationship of Deformed Bars under Generalized Excitations. *Report No. UCBEERC-83/23*. Berkeley, Earthquake Engineering Center, University of California.
- Elliot, K.S. (2002). *Precast Concrete Structures*. Oxford: Butterworth-Heinemann.
- Elnashai, A.S. and McClure, D.C. (1996). Effect of Modeling Assumptions and Input Motion Characteristics on Seismic Design Parameters of RC Bridge Piers. *Earthquake Engineering and Structural Dynamics*. 25, 435-463.
- Fajfar, P. (2000). A Nonlinear Analysis Method for Performance Based Seismic Design. *Earthquake Spectra*. 16(3), 573-592.
- Falborski, T. and Jankowski, R. (2012). Shaking Table Experimental Study on the Base Isolation System Made of Polymer Bearings. *Proceedings of the 15<sup>th</sup> World Conference on Earthquake Engineering*. 24-28 September. Lisbon: EERI, 2119-2126.
- FEMA (2000). *FEMA-356: Pre-standard and Commentary for the Seismic Rehabilitation of Buildings*. US: Federal Emergency Management Agency.
- FIP (2013). *FIP Industriale Elastomeric Isolators Series SI*. [Brochure]. Italy: FIP Industriale.
- Forni, M. (2010). *Guidelines proposal for seismic isolation of nuclear power plant*. Unpublished note, Economic Development Ministry
- Frosch, R.J., Li, W., Jirsa, J.O. and Kreger, M.E. (1996). Retrofit of Non-Ductile Moment-Resisting Frames Using Precast Infill Wall Panels. *Earthquake Spectra*. 12(4), 741-760.
- Gan, Y. (2000). *Bond Stress and Slip Modeling in Nonlinear Finite Element Analysis of Reinforced Concrete Structures*. M.As. Thesis. University of Toronto, Toronto.



- Gere, J. M. and Timoshenko, S. P. (1997). *Mechanics of Materials*. Boston, Massachusetts: PWS Publishing.
- Gerald, A. E. (1998). Design-Erection of B.C. Rail Yard Control Tower. *PCI Journal*. 43(1), 30-37.
- Ghosh, S.K. and Hawkins, N.M. (2001). Seismic Design Provisions for Precast Concrete Structures in ACI 318. *PCI Journal*. 46(1), 28-32.
- Guerreiro, L.M. and Azevedo, J.J. (1992). Seismic behavior of base isolated structures with nonlinear behavior. Proceedings of the 10<sup>th</sup> World Conference on Earthquake Engineering, 19-24 July. Spain.
- Gulvanessian, H. (2005). *Designers' Guide to EN 1998-1 and EN 1998-5 Eurocode 8: Design of Structures for Earthquake Resistance*. London: Thomas Telford.
- Hajighasemali, S., Abadi, R.E. and Farahani, S.S. (2009). Nonlinear Analysis on Prefabricated Shear Walls with Vertical Joints. *Proceedings of the 7<sup>th</sup> Asia Pacific Structural Engineering and Construction Conference*. 4-6 August. Malaysia.
- Hamid, N.A. (2009). *Seismic Performance and Design Criteria of Precast Wall Structures*. Malaysia: University Publication Center (UPENA).
- Hamid, N.A., Linayage, L. and Mander, J.B. (2008). Seismic Behaviour of Thin/Slender Concrete Walls with Monolithic Emulation Base Connections Tested on Shaking Table. *Journal of the Institution of Engineers, Malaysia*. 69(2), 7-17.
- Hamid, N.H.A. and Mohamed, N.M. (2011). Seismic Behaviour of Non-Seismic Precast Wall Panel of Double Storey House Under Quasi-Static Lateral Cyclic Loading. Unpublished note, Universiti Teknologi MARA.
- Hansen, K., Kavyrchine, M., Melhorn, G., Olesen, S., Pume, D. and Schwing, H. (1974). Design of Vertical Keyed Shear Joints in Large Panel Buildings. *Building Research and Practice*. 2(4), 202-215.
- Hansen, K., and Olesen, S. (1969). Failure load and failure mechanism of keyed shear joints, test results II. *Report No. 69/22*. Unpublished note, Danmarks Ingeniorakademi, Copenhagen.
- Hashemi, S.S., Tasnimi, A.A. and Soltani, M. (2009). Nonlinear Cyclic Analysis of Reinforced Concrete Frames, Utilizing New Joint Element. *Scientia Iranica Transaction A: Civil Engineering*. 16(6), 490-501.

- Hartland, R.A. (1975). *Design of Precast Concrete*. London: Surrey University Press.
- Hassim, S., Jaafar, M.S. and Zazalli, S.A.A.H. (2009). The Contractor Perception Towards Industrialized Building System Risk in Construction Projects in Malaysia. *American Journal of Applied Sciences*. 6(5), 937-942.
- Hawkins, N.M. and Ghosh, S.K. Acceptance Criteria for Special Precast Concrete Structural Walls Based on Validation Testing. *PCI Journal*. September-October, 78-92.
- Hendriyawan (2007). *Seismic Macrozonation of Peninsular Malaysia and Microzonation of Kuala Lumpur City Center and Putrajaya*. Ph.D. Thesis. Universiti Teknologi Malaysia, Skudai.
- Holland, E.P. and Svab, L.E. (1977). Design Problem. In Raths, C.H. (Ed.) *Design of Load Bearing Wall Panels*. US: Precast/Prestressed Concrete Institute.
- ICBO, International Conference of Building Officials. (1994). *1994 Uniform Building Code*. Whittier: International Conference of Building Officials.
- ICBO, International Conference of Building Officials. (1997). *1997 Uniform Building Code*. Whittier: International Conference of Building Officials.
- ICC, International Code Council. (2000). *2000 International Building Code*. US: International Code Council.
- ICC, International Code Council. (2006). *2006 International Building Code*. US: International Code Council.
- ICC, International Code Council. (2009). *2009 International Building Code*. US: International Code Council.
- Joseph, W.T., Mcdougal, W.G. and Ross, C.A. (1999). *Structural Dynamics: Theory and Applications*. California: Addison Wesley Longman.
- Kelly, J.M. (1999). The Role of Damping in Seismic Isolation. *Earthquake Engineering and Structural Dynamics*. 28(1), 3-20.
- Kelly, J.M. (2006). *Base Isolation: Origins and Development*.
- Kelly, T.E. (2001). *Base isolation of structures – Design guidelines*. New Zealand: Holmes Consulting Group Ltd.
- Kikuchi, M. and Aiken, I.D. (1997). An Analytical Hysteresis Model for Elastomeric Seismic Isolation Bearings. *Earthquake Engineering and Structural Dynamics*. 26(2), 215-231.

- Komur, M., Karabork, T. and Deneme, I. (2011). Nonlinear Dynamic Analysis of Isolated and Fixed-Base Reinforced Concrete Structures. *Gazi University Journal of Science*. 24(3), 463-475.
- Kurama, Y.C., (2005). Seismic Design of Partially Post-Tensioned Precast Concrete Walls. *PCI Journal*. 7(4), 100-125.
- Kwan, A.K.H. and Xia, J.Q. (1995). Shake-Table Tests of Large-Scale Shear Wall and Infilled Frame Models. *Proceedings of the Institution of Civil Engineers: Structures and Buildings*. 110(1), 66-67.
- Kwak, H.G. and Kim, S.P. (2006). Nonlinear Dynamic Analysis of RC Frames Using Cyclic Moment-Curvature Relation. *Structural Engineering and Mechanics*. 17(3), 357-378.
- Krawinkler, H. (2009). *Loading Histories for Cyclic Tests in Support of Performance Assessment of Structural Components*. Unpublished note, Pacific Earthquake Engineering Research Center.
- Lee, D.G., Hong, J.M. and Kim, J. (2001). Vertical Distribution of Equivalent Static Loads for Base Isolated Building Structures. *Engineering Structures*. 23(10), 1293-1306.
- Li, Z. and Rigoberto R.C. (1998). Design-Construction of Olympic Stadium in Honduras, *PCI Journal*. 43(1), 20-29.
- Lihanand, K. and Tseng, W.S. (1988). Development and Application of Realistic Earthquake Time Histories Compatible with Multiple Damping Design Spectra. *Proceedings of the 9<sup>th</sup> World Conference on Earthquake Engineering*. August. Japan.
- Lopes, M.S. and Bento, R. (2001). Seismic behaviour of dual systems with column hinging. *Earthquake Spectra*. 17(4), 657-678.
- Lu, X., Urukup, T.H., Li, S. and Lin, F. (2012). Seismic behaviour of interior RC beam-column joints with additional bars under cyclic loading. *Earthquakes and Structures*. 3(1), 37-57.
- Malek, K.A., Ahmadi, H.R., Muhr, A.H. Stephens, I.J., Gough, J., Picken, J.K., Lee, J.J., Zulkefli, M.U. and Taib, I.M. (2012). Seismic Protection of 2<sup>nd</sup> Penang Crossing Using High Damping Natural Rubber Isolators. *Proceedings of the 15<sup>th</sup> World Conference on Earthquake Engineering*. 24-28 September. Lisbon: EERI, 4358-4366.

- Mainstone, R.J. (1972). On the stiffness and strengths of infill frames. Building research establishment paper CPS/72.
- Marriott, D.J., Pampanin, S., Palermo, A. and Bull, D. (2008). Shake-Table Testing of Hybrid Post-Tensioned Precast Wall Systems with Alternative Dissipating Solutions. *Proceedings of the 14<sup>th</sup> World Conference on Earthquake Engineering*. 12-17 October. China.
- Mergos, P. and Beyer, K. (2013). Developing Loading Protocols for Regions of Low to Moderate Seismicity in Europe. *Submitted to Bulletin of Earthquake Engineering*.
- Mayes, R.L. and Naeim, F. (2001). Chapter 14: Design of Structure with Seismic Isolation. In: Naeim, F. (Ed.) *The Seismic Design Handbook*. (2<sup>nd</sup> ed.) Boston: Kluwer Academic Pub.
- Megally, S., Seible, F., Garg, M. and Dowell, R.K. (2002). Seismic Performance of Precast Segmental Bridge Superstructures with Internally Bonded Prestressing Tendons. *PCI Journal*. 47(2), 2-18.
- Moroni, M.O., Sarrazin, M. Brull, J. and Munoz, R. (2004). Shaking Table Tests of a Scaled Base Isolated Shear Wall Building. *Proceedings of the 8th US National Conference on Earthquake Engineering*, Paper No. 728.
- Mosley, B., Bungey, J. and Hulse, R. (2007). *Reinforced concrete design to Eurocode 2*. New York, US: Palgrave Macmillan.
- Naeim, K. and Kelly, J.M. (1999). Design of Seismic Isolated Structures – From Theory to Practice. New York: John Wiley & Sons.
- Narasimhan, S., Wang, M. and Pandey, M. (2009). Principal component analysis for predicting the response of nonlinear base-isolated buildings. *Earthquake Spectra*. 25(1), 93-115.
- NBCC (1985). *National Building Code of Canada 1985*. Ontario: National Research Council of Canada.
- Nimry, H.S. (2013). Quasi-Static Testing of RC Infilled Frames and Confined Stone-Concrete Bearing Walls. *Journal of Earthquake Engineering*. 18(1), 1-23.
- NZS 3101 (1995). *The Design of Concrete Structures*. Wellington: Standards New Zealand.
- NZS 1170.5 (2004). *Structural Design Actions, Part 5: Earthquake Actions*. Wellington: Standards New Zealand.

- Occhiuzzi, A., Caterino, N. and Maddaloni, G. (2008). Structural Control Strategies for Seismic Early Warning Systems. *Proceedings of the 14<sup>th</sup> World Conference on Earthquake Engineering*. 12-17 October. China.
- Okuyucu, D. and Tankut, T. (2009). Effects of Panel Concrete Strength on Seismic Performance of RC Frames Strengthened by Precast Concrete Panels. *Proceedings of the WCEE-ECCE-TCCE Joint Conference: Earthquake & Tsunami*. 22-24 June. Turkey, 1-10.
- Palazzo, B. and Petti, L. (1996). Reduction factors for base isolated structures. *Computer & Structures*. 60(6), 945-956.
- Park, T.W., Chung, L. and Kim, J. (2011). Seismic Performance Evaluation of Tall and Nonseismic-Designed Wall-Type Structures by Shaking Table Tests. *The Structural Design of Tall and Special Buildings*. 30, 314-326.
- PEER (2010). Ground Motion Database of Pacific Earthquake Engineering Research.
- Pinho, R. (2007). Using Pushover Analysis for Assessment of Buildings and Bridges. In Pecker, A. (Ed.) *Advanced Earthquake Engineering Analysis*. New York: Springer.
- Politopoulos, I. (2008). A Review of Adverse Effects of Damping in Seismic Isolation. *Earthquake Engineering and Structural Dynamics*. 37(3), 447-465.
- Posada, M. and Woods, S.L. (2002). Seismic Performance of Precast Industrial Buildings in Turkey. *Proceedings of the 7<sup>th</sup> U.S. National Conference on Earthquake Engineering*. 21-25 July. Boston: EERI, Paper 543
- Priestley, M.J.N., Sritharan, S. (Sri), Conley, J.R. and Pampanin, S. (1999). Preliminary Results and Conclusions from the PRESSS Five-Story Precast Concrete Test Building. *PCI Journal*. 44(6), 42-67.
- Raths, C.H. (1977). *Design of load bearing wall panels – Design considerations for a precast prestressed apartment building*. Illinois, US: Prestressed Concrete Institute.
- Rodriguez, M.E. and Blandon, J.J. (2005). Tests on a Half-Scale Two-Story Seismic-Resisting Precast Concrete Building. *PCI Journal*. 50(2), 56-75.
- Saito, K. (2008). *Progress in Scale Modeling*. US: Springer.
- Samali, B., Li, J., Mayol, E. and Wu, Y.M. (1999). System Identification of a Five Storey Benchmark Model Using Modal Analysis. *Proceedings of the*

- International Conference on Applications of Modal Analysis*. December, Australia.
- Sarrazin, M.J. (1992). Design and Construction of a Building on Seismic Isolators. *Bulletin of IISEE*. 26, 481-497.
- Sayani, P.J. (2009). *Relative Performance Comparison and Loss Estimation of Seismically Isolated and Fixed-Based Buildings using PBEE Approach*. Ph.D. Thesis. Utah State University, Utah.
- Sayani, P.K., Erduran, E. and Ryan, K.L. (2011). Comparative Response Assessment of Minimally Compliant Low-Rise Base-Isolated and Conventional Steel Moment-Resisting Frame Buildings. *Journal of Structural Engineering*. 137(10), 1118-1131.
- Seifi, M., Noorzaei, J., Jaafar, M.S. and Panah, E.Y. (2008). Nonlinear Static Pushover Analysis in Earthquake Engineering: State of Development. *Proceedings of the International Conference on Construction and Building Technology*. 16-20 June. Malaysia, 69-80.
- Shi W., Sun H. and Wang, Q. (2004). A Study on Combined Isolation System. *Proceedings of the 13<sup>th</sup> World Conference on Earthquake Engineering*. Vancouver BC, Canada, Paper No. 2232.
- Soudki, K.A., West, J.S., Rizkalla, S.H. and Blackett, B. (1996). Horizontal Connections for Precast Concrete Shear Wall Panels Under Cyclic Shear Loading. *PCI Journal*. 41(3), 64-80.
- gandy, F. (2012). *Southeast Asia Construction*. Singapore: Trade Link Media.
- Takashi, S. (1999). *Precast Concrete Technology for Engineers*. Malaysia: Shah Alam Polytechnic.
- Takeda, T., Sozen, M. and Nielson, N. (1970). Reinforced concrete response to simulated earthquakes. *ASCE Journal of the Structural Division*. 96(12), 2557-2573.
- Taniwangsa, W. (2002). Design Considerations for a Base Isolated Demonstration Building. *Earthquake Spectra*. 18(4), 761-776.
- Taucer, F., Spacone, E. and Filippou, F. C. (1991). A Fiber Beam-Column Element for Seismic Analysis of Reinforced Concrete Structures. *Report No. UCB/EERC-91/17*. Berkeley: University of California.
- Tavakoli, H.R., Naghavi, F. and Goltabar, A.R. (2013). Dynamic Responses of the

- Base-Fixed and Isolated Building Frames Under Far-and Near-Fault Earthquakes. *Arabian Journal of Science and Engineering*.
- Terec, L.R. and Enyendi, C. (2012). Infill Precast Panels as Retrofit System of Reinforced Concrete Frames. *Proceedings of the 15<sup>th</sup> World Conference on Earthquake Engineering*. 24-28 September. Lisbon: EERI, 2509-2517.
- Thurston, S.J. (2006). *Base Isolation of Low Rise Light and Medium-Weight Buildings*. Unpublished note, BRANZ.
- Tiong, P.L.Y., Adnan, A. and Ahmad, F. (2011). Improved Discrete Precast Concrete Wall Panels and Modular Moulds for Wet Joints in Malaysia. *CPI International*. 6, 150-152.
- Tiong, P.L.Y., Adnan, A., Ahmad, F., Mirasa, A.K. and Rahman, A.B.A. (2012). Earthquake Resistance Test of HC Precast System by Shake Table. *Building and Investment*, September-October, 34-36.
- Warn, G.P. and Ryan, K.L. (2012). A review of seismic isolation for buildings: Historical development and research needs. *Buildings*. 2, 300-325.
- Wu, Y.M. and Samali, B. (2002). Shake table testing of a base isolated model. *Engineering Structures*. 24(9), 1203-1215.
- Xiao, J.Z., Pham, T.L., Wang, P.J. and Gao, G. (2013). Behaviors of semi-precast beam made of recycled aggregate concrete. *The structural design of tall and special buildings*. 23(4).
- Yoo, B. and Kim, Y.H. (2002). Study on Effects of Damping in Laminated Rubber Bearings on Seismic Responses for a 1/8 Scale Isolated Test Structure. *Earthquake Engineering and Structural Dynamics*. 31(10), 1777-1792.
- Zhu, T.J., Heidebrecht, A.C. and Tso, W.K. (1988). Effect of Peak Ground Acceleration to Velocity Ratio on Ductility Demand of Inelastic Systems. *Earthquake Engineering and Structural Dynamics*. 16, 63-79.

## LIST OF PUBLICATIONS

1. Tiong, P.L.Y., Adnan, A., and Hamid, N.H.A. (2013). "Behaviour Factor and Displacement Estimation of Low-Ductility Precast Wall System under Seismic Actions." *Earthquakes and Structures*, 5(6): 625-655pp. (IF 2012 = 1.381)
2. Tiong, P.L.Y., Adnan, A., Rahman, A.B.A., Mirasa, A.K. (2013). "Seismic Performance of Low-Ductility Precast Wall Structure with Base Isolation." *International Journal of Engineering, Transactions B: Applications*, 26(2): 153-162pp. (SCOPUS)
3. Tiong, P.L.Y., and Adnan, A., Rahman, A.B.A., and Mirasa, A.K. "Improved Design Approach of High Damping Rubber Bearing for Seismic Isolation." *Earthquake Engineering and Engineering Vibration*. (IF 2013 = 0.475, under review)
4. Tiong, P.L.Y., and Adnan, A., Rahman, A.B.A., and Mirasa, A.K. "Seismic Base Isolation of Precast Wall System using High Damping Rubber Bearing." *Earthquakes and Structures*. (IF 2012 = 1.381, under review)
5. Adnan, A., Tiong, P.L.Y., Sunaryati, J., Ghazali, M.Z.M., and Malek, K.A. (2010). "Seismic Base Isolation of Steel Frame Structure by Hollow Rubber Bearings." *Gazi University Journal of Sciences*, 24(4): 841-853pp. (SCOPUS)
6. Tiong, P.L.Y., Mustaffar, M., and Hainin, M.R. (2012). "Road Surface Assessment of Pothole Severity by Close Range Digital Photogrammetry Method", *World Applied Sciences Journal*, 19(6): 867-873pp. (SCOPUS)
7. Adnan, A., Tiong, P.L.Y., Ismail, R., and Shamsuddin, S.M. (2012). "Artificial Neural Network Application for Predicting Seismic Damage Index of Buildings in Malaysia", *Electronic Journal of Structural Engineering*, 12(1): 1-9pp. (SCOPUS)
8. Tiong, P.L.Y., Adnan, A., Mirasa, A.K., and Rahman, A.B.A. (2011). "Performance of IBS Precast Concrete Beam-Column Connections under Earthquake Effects: A Literature Review." *American Journal of Engineering and Applied Sciences*, 4(1): 93-101pp.
9. Adnan, A., Tiong, P.L.Y., and Chow, Y.E. (2012). "Usability of the Next Generation Attenuation Models for Seismic Hazard Assessment of Peninsular Malaysia", *International Journal of Engineering Research and Applications*, 2(1): 639-644pp.



10. Suhatri, M., Adnan, A., Vafae, M.R., and Tiong, P.L.Y. (2012). "The Seismic Performance Comparison of Integral Bridge Model by using Finite Element Program and Shaking Table Test", *International Journal of Physical Sciences*, 7(6): 927-936pp.
11. Adnan, A., and Tiong, P.L.Y. (2012). "SEER-iPLAT: The Isolated Platform for Seismic Mitigation", *International Journal of Engineering Inventions*, 1(8): 38-44pp.
12. Tiong, P.L.Y., Adnan, A., and Ahmad, F. (2011). "Improved Discrete Precast Concrete Wall Panels and Modular Moulds for Wet Joints in Malaysia", *Concrete Plant International*, 6: 150-152pp.
13. Tiong, P.L.Y., Adnan, A., Ahmad, F., Mirasa, A.K., and Rahman, A.B.A. (2011). "Earthquake Resistance Test of HC Precast System by Shake Table." *Building and Investment*, 2011(September-October): 34-36pp.
14. Tiong, P.L.Y. (2012). "Standing at the Crossroads: To Enrol for Postgraduate Studies or Get a Job?", *MBA Edge & Postgraduate Studies*, 2011(6): 54-56pp.
15. Adnan, A., Tiong, P.L.Y., Mirasa, A.K., and Rahman, A.B.A. (2009). "Performance of IBS Precast Concrete Beam-Column Connections under Earthquake Effects", *Proceedings of the 7th Asia Pacific Structural Engineering and Construction Conference (APSEC 2009) and 2nd European Asian Civil Engineering Forum (EACEF 2009)*, Langkawi, Malaysia, 4th – 6th August.
16. Adnan, A., and Tiong, P.L.Y. (2010). "The Effects of Earthquake Disaster on Urban Infrastructure Development and Management in Malaysia", *Keynote of the 2nd International Conference on Urban Development and Management (ICUDM) 2010*, Langkawi, Malaysia 2nd – 4th August.
17. Adnan, A., and Tiong, P.L.Y. (2012). "Ductility Requirement of Non-ductile Reinforced Concrete Frames with Different Infill Configuration and Location", *Proceedings of the 15th World Conference on Earthquake Engineering (WCEE) 2012*, Lisbon, Portugal, 24th – 28th September.
18. Adnan, A., Surnayati, J., and Tiong, P.L.Y. (2010). "Laboratory Shake Table Testing of Seismic Base Isolated Steel Frame Structures", *Proceedings of the Regional Seminar of Science, Technology & Social Sciences (STSS) 2010*, Kuantan, Malaysia, 1st – 2nd June.
19. Tiong, P.L.Y., Adnan, A., Mirasa, A.K., and Rahman, A.B.A. (2010). "Seismic

- Performance of Base Isolated Precast Concrete Structures”, *Proceedings of the 2010 National Postgraduate Seminar (NAPAS’10)*, Shah Alam, Malaysia, 6th – 7th July.
20. Adnan, A., Vafaei, R., Suryanita, R., Tiong, P.L.Y., Ali, M.I., and Vasagavijayan, S. (2010). “Structural Health Monitoring System for Seismic Performance of DBKL2 Building”, *Proceedings of the Seminar on Sustainable Housing*, Skudai, Malaysia, October.
  21. Tiong, P.L.Y., Adnan, A., Mirasa, A.K., and Rahman, A.B.A. (2011). “The Need of Structural Earthquake Design Codes for Precast Concrete Construction in Malaysia”, *Proceedings of the National Seminar on Civil Engineering Research (SEPKA) 2011*, Skudai, Malaysia, 13th – 15th September.
  22. Adnan, A., Vafaei, R., Suhatri, M., and Tiong, P.L.Y. (2011). “Seismic Evaluation for Intelligent Structural Health Monitoring System of a Building in Kuala Lumpur City Center”, *Proceedings of the National Technical Seminar on Earthquake and Tsunami in Malaysia (NATSET) 2011*, Petaling Jaya, Malaysia, 20th – 21st December.