



UNIVERSITY OF LEEDS

This is a repository copy of *Modeling durophagous predation and mortality rates from the fossil record of gastropods*.

White Rose Research Online URL for this paper:  
<http://eprints.whiterose.ac.uk/140584/>

Version: Accepted Version

---

**Article:**

Budd, GE and Mann, R [orcid.org/0000-0003-0701-1274](https://orcid.org/0000-0003-0701-1274) (2019) Modeling durophagous predation and mortality rates from the fossil record of gastropods. *Paleobiology*, 45 (2). pp. 246-264. ISSN 0094-8373

<https://doi.org/10.1017/pab.2019.2>

---

© 2019 The Paleontological Society. This article has been published in a revised form in *Paleobiology*. <http://doi.org/10.1017/pab.2019.2> This version is free to view and download for private research and study only. Not for re-distribution or re-use.

**Reuse**

Items deposited in White Rose Research Online are protected by copyright, with all rights reserved unless indicated otherwise. They may be downloaded and/or printed for private study, or other acts as permitted by national copyright laws. The publisher or other rights holders may allow further reproduction and re-use of the full text version. This is indicated by the licence information on the White Rose Research Online record for the item.

**Takedown**

If you consider content in White Rose Research Online to be in breach of UK law, please notify us by emailing [eprints@whiterose.ac.uk](mailto:eprints@whiterose.ac.uk) including the URL of the record and the reason for the withdrawal request.



[eprints@whiterose.ac.uk](mailto:eprints@whiterose.ac.uk)  
<https://eprints.whiterose.ac.uk/>

# Paleobiology



**CAMBRIDGE**  
UNIVERSITY PRESS

**Modelling durophagous predation and mortality rates from  
the fossil record of gastropods**

Journal:	<i>Paleobiology</i>
Manuscript ID	PAB-OR-2018-0045.R3
Manuscript Type:	Article
Date Submitted by the Author:	03-Jan-2019
Complete List of Authors:	Budd, Graham; Uppsala Universitet, Earth Sciences Mann, Richard; University of Leeds , School of Mathematics
Geographic Location:	
Taxonomy:	Gastropoda
Analysis:	modeling, predation intensity
Geologic Age:	
Topic:	predation traces, longevity, macroecology

SCHOLARONE™  
Manuscripts

# **Modeling durophagous predation and mortality rates from the fossil record of gastropods**

Graham E. Budd and Richard P. Mann

RRH: MODELING DUROPHAGOUS PREDATION ON GASTROPODS  
LRH: GRAHAM E. BUDD AND RICHARD P. MANN

For Peer Review

*Abstract.*—Gastropods often show signs of unsuccessful attacks by durophagous predators in the form of healed scars in their shells. As such, fossil gastropods can be taken as providing a record of predation through geological time. However, interpreting the number of such scars has proved to be problematic - would a low number of scars mean a low rate of attack, or a high rate of success, for example? Here we develop a model of population dynamics amongst individuals exposed to predation, including both lethal and non-lethal attacks. Using this model we calculate the equilibrium distributions of ages and healed scars in the population and amongst fossilized specimens, based on the assumption that predation is independent of age or scar number. Based on these results we formally show that the rates of attack and success cannot be disambiguated without further information about population structure. Nevertheless, by making the assumptions that the non-durophagous predatory death rate is both constant and low, we show that it is possible to use relatively small assemblages of gastropods to produce accurate estimates of both attack and success rates, if the overall death rate can be estimated. We consider likely violations of the assumptions in our model and what sort of information would be required to solve this problem in these more general cases. However, it is not easy to extract the relevant information from the fossil record: a variety of important biases are likely to intervene to obscure the data that gastropod assemblages may yield. Nonetheless the model provides a theoretical framework for interpreting summary data including for comparison between different assemblages.

*Graham E. Budd. Dept of Earth Sciences, Palaeobiology, Uppsala University, Villavägen 16, Uppsala, Sweden, SE 752 36. graham.budd@pal.uu.se.*

*Richard P. Mann. Department of Statistics, School of Mathematics, University of Leeds, Leeds LS2 9JT, United Kingdom. & The Alan Turing Institute, London NW1 2DB. United Kingdom. r.p.mann@leeds.ac.uk.*

## Introduction

A possible forcing role of predation in evolution has become an important theme in recent discussions of major evolutionary radiations – a viewpoint with an ancient pedigree championed by Vermeij (e.g. Stanley 1973; Vermeij 1993; Bengtson 2002; Hull 2017; Bicknell and Paterson 2018). Notable examples of faunal turnovers or radiations where predation has been considered to be of particular importance include the growth of sclerotized organisms during the Cambrian explosion (Bengtson 2002; Bicknell and Paterson 2018), perhaps related to growing sophistication of both prey and predator (c.f. Budd 2000; but see also Budd and Mann 2018); and the so-called ‘Mesozoic Marine Revolution’, a coordinated pattern of change in cryptic habitats and defensive structures seen in e.g. mollusks that is particularly clear from the Cretaceous onwards, and which seems to have built on changes from as far back as the Devonian (Vermeij 1977; Signor and Brett 1984; Harper 2006). Conversely, the relationship between predator and prey has been shown to be more complex than a simple ‘arm’s race’, both in theoretical and inferential terms (e.g. Abrams 1989; Leighton 2002). Irrespective of this centrality of predation in understanding how faunal changes take place however, little direct evidence is available from which levels of predation through time can be estimated, partly because victims of successful predation rarely survive to leave a fossil record. This failure of fossil survival is nevertheless strongly dependent on mode of predation. For example, drilling predators such as the modern naticid gastropods may leave the shell of their prey more or less intact apart from characteristic drill holes (Carriker and Yochelson 1968), a mode of predation that has been claimed to exist as far back as the Ediacaran period (Bengtson and Zhao 1992).

One opportunity is presented by those organisms that most clearly preserve evidence of at least failed durophagous predation – i.e., the gastropods (e.g. Alexander and Dietl 2003). Modern day

predators on gastropods such as decapod crustaceans have a variety of ways of attacking their prey such as crushing the apex of the shell and then extracting the soft tissue from the top; but one common approach is so-called “peeling”, whereby the predator inserts a claw into the aperture of the prey and breaks the shell along the whorl spirally towards the apex (fig. 1 of Shoup 1968). This method of attack is however relatively time-consuming, as the prey can retreat the soft parts up towards the apex of the shell, so that a considerable amount of shell may need to be peeled away before the prey can be reached. Gastropods possess considerable powers of repair and regeneration, however, as the edge of the living mantle can rebuild the broken rim of the shell (Andrews 1935). Failed attempts at predation may thus leave a characteristic scar on the rim of the shell that eventually becomes incorporated into a whorl as the gastropod continues to grow (Fig. 1). During its lifetime, a gastropod may survive multiple attempts of predation that will leave a series of scars. The average rate of unsuccessful predation on a gastropod population may thus be estimated by the number of scars on each gastropod in a fossil population, assuming one can estimate age from size (see below: for a discussion of the various metrics of scarring, see e.g. Alexander and Dietl 2003; Ebbestad and Stott 2008). This sort of record of attempted predation can be traced back far in the fossil record (Lindström and Peel 2005) and thus provides a potential insight into how such attacks have evolved through time.

The importance of apertural attack on gastropods may be inferred by the growing elaboration of apertural defenses in gastropods through the fossil record, such as narrowing the aperture into a slit, thickening of the apertural margin and growth of apertural spines (e.g. Vermeij 1983).

However, the problem that remains to be solved is to be able to estimate the (unknown) rates of lethal predation from the (known) rates of failures, and this has proved to be problematic. Whilst the rate of scarring within a population has often been taken as a proxy of intensity of the total

rate of attack (Leighton 2002; Molinaro et al. 2014; Stafford et al. 2015), consideration of what the fossil record is reflecting suggests that this relationship is far from certain (see e.g. Harper and Peck 2016). Is a population of gastropods with few apertural scars indicative of low absolute predation rates, with a low number of failures correlated with a low number of successes, or does it indicate a high ratio of success, which might also be expected to leave relatively few survivors with few scars (e.g. Leighton 2002: c.f. Vermeij et al. 1981)? If snails that were successfully predated were preserved intact and could be identified as such, rather than being destroyed, then the solution to the ratio between success and failure of predation would be trivial to solve, being merely the inverse of the average number of failed predation scars on each snail that ultimately died from predation. However, in general it is hard to show that a particular fossil shell *was* actually damaged during lethal predation. Whilst it is possible to find modern shells that appear to have been lethally damaged by predation (Vermeij 1982), these clear-cut examples seem rare in the fossil record (pers. comm. J. S. Peel 2010), or at least difficult to identify as such. The problem is thus that the preserved shells represent a biased subset of the total population, with those that died from (destructive) predation essentially excluded from the record. The question then becomes: is there enough information preserved in the shells in the fossil record, with their record of survived attacks, to deduce the structure of the entire population including the ones no longer preserved?

While various authors have indicated some of the potential problems involved in making direct inferences about predation rates from the fossil record, this discussion has been hampered by the lack of an explicit model that relates scar frequency to predation rates. One recent paper (Ishikawa et al. 2018) considers a formal mathematical approach for the case of drilling predation. They too focused on possible ambiguity between rates of attack and success in

previous empirical analyses and built a model to resolve this ambiguity from fossil data. The key difference between their approach and ours outlined below is that instances of successful predation by drilling leaves shells available to be fossilized, whereas peeling predation occludes successfully predated specimens from the fossil record. Another mathematical model developed for an analogous problem is provided by Schoener (1978) who modeled healed injuries in lizard tails. Here, we present an explicit model for the case of durophagous predation, and show both the consequences of that model in terms of the likely observable data and the inverse problem of identifying predation rates from such data. We derive a full distribution for the age and scar distribution in an idealized living population under a range of possible scenarios, and then relate this distribution to the possible observations that can be made from the fossil record. We consider the likely selection biases and data occlusions that are likely in the fossil record, and we additionally discuss a range of more qualitative deviations from our model (and from standard assumptions made elsewhere) resulting from complexities of predation and population dynamics in reality. This extends significantly upon the results of Schoener (1978), who derived expressions only for the proportion of individuals with at least one injury, and considered a limited set of possible deviations from an idealized model.

### **A general model of scar production**

An assemblage of fossil snails is created by an interaction of two sets of processes: ecological processes that affect the living snails, and biostratigraphic processes that affect the dead ones. These can together be considered to be composed of *destructive* and *non-destructive* processes. Destructive processes encompass successful predation that destroys the shell, and biostratigraphic processes such as breakage, dissolution and so on that remove dead shells from the record. The



recovered fossil record thus lacks snails that were destroyed by either of these processes. We make the *initial* assumption here that biostratigraphic processes are non-selective, i.e. that dead shells all have an equal chance of being fossilized. After the model is presented we consider the case of when this is not the case (as indeed seems likely [Cooper et al. 2006]). Non-destructive processes include: failed attacks (which leave scars but do not destroy the shell); death from non-predatory causes (e.g., starvation); and death from predation or other biological processes that do not destroy the shell (for example, drilling predation or important predators such as asteroids that remove the prey without affecting the shell (Carter 1968; Feder 1963); death from disease, parasitism etc). In the following, "predation" refers only to durophagous predation that leaves a scar if unsuccessful (for the significance of this simplification, see discussion below), and thus necessarily neglects predation by e.g. asteroids. We note that both failed and successful attacks are likely to have been carried out by a variety of different predators (e.g. Birkeland 1974; Sih et al. 1998), so that our model treats the effects of all scarring predators in aggregate.

In our model we consider a population of snails, each of which is characterized by its age and the number of healed scars it possesses. Within this population, we denote the number of snails of age  $a$ , with marks  $m$  at time  $t$  as  $N(a,m,t)$ . This population changes over time as a result of various processes. Snails are attacked at a rate  $R$  per unit time, independent of time, age or current number of scars. A proportion,  $\rho$ , of these attacks are successful, again independent of time, age or scar number. Snails also die of non-predative causes at a rate  $d(a)$ , which may depend on the age of the snail (e.g. by senescence). The effect of these processes on the fate of the snails is illustrated in Figure 2. Over a short time window, there are four possible outcomes for a focal individual: (i) successful predation leading to death and thus destruction of the shell, at a rate  $R\rho$ ; (ii) unsuccessful predation leading to the formation of a scar, at a rate  $R(1 - \rho)$ ; (iii)

death from non-predatory causes, leading to potential preservation of the shell in the record, at a rate  $d(a)$ ; and (iv) the snail ages without being attacked or dying of any other cause, at rate  $1 - d(a) - R$ . Therefore, over some short interval of time  $\Delta t$  the dynamics of the population can be described by the following master equation.

$$N(a + \Delta t, m, t + \Delta t) = N(a, m, t)(1 - d(a)\Delta t - R\Delta t) + N(a, m - 1, t)R(1 - \rho)\Delta t(1)$$

where the first term on the right-hand side represents all snails that previously had  $m$  scars and were neither predated nor died of non-predatory causes, and the second term represents those that previously had  $m - 1$  scars and faced an unsuccessful predatory attack. These are the only two ways in which a snail may have  $m$  scars at the subsequent time point (see Fig. 2).

Ignoring the number of scars, the number of snails of age  $a$  is determined by the proportion of younger snails surviving both predatory and non-predatory possibilities of dying. The proportion of snails of age  $a$  that will make it to the age of  $a + \Delta t$  is  $1 - d(a)\Delta t - R\rho\Delta t$ , i.e. those that are neither successfully predated (rate  $R\rho$ ) or suffer non-predatory death (rate  $d(a)$ ). Hence, we can formulate a second master equation for the age distribution:

$$\begin{aligned} N(a + \Delta t, t + \Delta t) &\equiv \sum_{m=0}^{\infty} N(a + \Delta t, m, t + \Delta t) \\ &= N(a, t)(1 - d(a)\Delta t - R\rho\Delta t) \end{aligned} \quad (2)$$

The first line of this equation expresses the fact that the total number of snails of a given age must always equal the sum of those with that age with each possible number of scars.

*Steady state solution.* — In a steady state solution,  $N(\mathbf{a}, \mathbf{m}, \mathbf{t})$  does not vary with  $\mathbf{t}$ :

$N(\mathbf{a}, \mathbf{m}, \mathbf{t}) \equiv N(\mathbf{a}, \mathbf{m}) \forall \mathbf{a}, \mathbf{m}, \mathbf{t}$ . Using this assumption, we can derive a solution for the steady state population. Taking equation 1, we have:

$$N(a + \Delta t, m) = [N(a, m)(1 - d(a)\Delta t - R\Delta t) + N(a, m - 1)R(1 - \rho)]\Delta t. \quad (3)$$

From equation 2 we also have:

$$N(a + \Delta t) = N(a)(1 - d(a)\Delta t - R\rho\Delta t). \quad (4)$$

From the above equations, we can determine the evolution of the conditional probability  $P(m|a)$ , that a snail of age  $a$  has  $m$  scars:

$$\begin{aligned} P(m|a + \Delta t) &= N(a + \Delta t, m)/N(a + \Delta t) \\ &= \frac{[N(a, m)(1 - d(a)\Delta t - R\Delta t) + N(a, m - 1)R(1 - \rho)]\Delta t}{N(a)(1 - d(a)\Delta t - R\rho\Delta t)} \\ &= P(m|a)(1 - R(1 - \rho)\Delta t) + P(m - 1|a)R(1 - \rho)\Delta t + O(\Delta t^2). \end{aligned} \quad (5)$$

Where  $O(\Delta t^2)$  stands for terms of order  $\Delta t^2$  that can be neglected as  $\Delta t \rightarrow 0$ . Taking the limit as  $\Delta t \rightarrow 0$ , we therefore have:

$$\frac{dP(m|a)}{da} = R(1 - \rho)[P(m - 1|a) - P(m|a)]. \quad (6)$$

Solution of this differential equation (see Appendix) reveals that  $P(m|a)$  therefore follows a Poisson distribution with mean  $R(1 - \rho)a$ :

$$P(m|a) = \frac{(R(1 - \rho)a)^m \exp(-R(1 - \rho)a)}{m!} \quad (7)$$

If we assume that the fossilization and collection processes are not biased with respect to scar number, we can expect that the distribution of scars with age in the population of fossil shells will be the same as in the living population, i.e.:

$$P_f(m|a) = P(m|a) \quad (8)$$

Two key insights can be gleaned from this result. First, the distribution of the number of scars as a function of age (in both living and fossil assemblages) depends entirely on the predation parameters  $R$  and  $\rho$ , and excludes factors related to the non-predatory death rate. We can therefore make inferences about  $R$  and  $\rho$  from this information without a detailed understanding of the life table of the gastropod species.

The second insight, however, is that this Poisson distribution of unsuccessful attacks per unit time depends solely on the *product*  $R(1 - \rho)$  that we label  $\Omega$ . This implies that inferences based on the age-dependent scarring alone can never reveal a unique combination of  $R$  and  $\rho$  that best fits the available data. Instead, inferences will identify an optimal value of  $R(1 - \rho)$ , and thus a contour in the  $R, \rho$  parameter space. Without further information or assumptions, no further disambiguation is possible. This result confirms the intuition of some previous workers (e.g. Leighton 2002) that a high number of scars per year of life can only ambiguously indicate high predation rates or low success rates. Our  $\Omega$  broadly corresponds to the  $\lambda$  of Kosloski et al. (2017). Note that, like  $\Omega$ , the  $\lambda$  of Kosloski et al. (2017) thus corresponds only to  $R(1 - \rho)$  and not to predation pressure itself,  $R\rho$ .

In order to proceed further, then, it is necessary to also examine the distribution of shell ages. In order to do so, we need to consider the non-predatory death rate,  $d(a)$ . Various models for death rates for different ages exist (Caddy 1991). These include (broadly): increasing death rates through age; decreasing death rates through age; and constant death rates through age. The first model characterizes organisms such as mayflies and first world humans, and seems intuitively most likely. However, many marine organisms including gastropods (e.g. Suzuki et al. 2002;

Perron 1986) do not appear to exhibit this sort of mortality, but rather appear to have a constant death rate throughout most of their lives. The exception, in gastropods as in all marine invertebrates, especially those with planktotrophic larvae, would be extremely high mortality in their earliest months (Rumrill 1990; Perron 1983; Gosselin and Qian 1997), probably largely through predation. For the purposes of our study, however, the mortality rates of such young snails can be disregarded as they are essentially invisible in the fossil record. Constant death rates from all causes after this early period would imply that marine invertebrates do not seem to show senescence (i.e. they rarely die from "old age" [Britton and Morton 1994]). It should be noted that if overall mortality *is* constant through age, then both death from predation and from non-predation are also likely to be constant. If not, then increase in one would have to be balanced by decrease in another, and it is hard to think of a theoretical reason for this. Thus, although one might expect that invertebrates become more resistant to predation as they grow (see age refuges, below), a body of empirical evidence suggests that at least some maintain constant death rates throughout their lives (see e.g. the red abalone, *Haliotis rubescens*, and other examples in Jones et al. [2014]).

### **Modeling attack and success rates with a constant non-predatory death rate**

The age distribution in the population can be determined from equation 4. Taking the limit as  $\Delta t \rightarrow 0$ , we arrive at a simple differential equation, whose solution, if  $d(a)$  is constant, specifies an exponential distribution of ages:

$$\begin{aligned} \frac{dP(a)}{da} &= 1 - d - R\rho \\ \Rightarrow P(a) &= (R\rho + d)\exp(- (R\rho + d)a) \end{aligned} \quad (9)$$

For  $d(a)$  to be constant (but of significant size) implies that the distribution of ages in the fossil shells,  $P_f(a)$ , is the same as in the living population, as non-predatory death samples these shells into the pool of potential fossils in an unbiased fashion.

$$P_f(a) = P(a) = (R\rho + d)\exp(-(R\rho + d)a) \quad (10)$$

Given both this age distribution of fossil shells (equation 10) and the distribution of scars conditioned on age (e.g. equation 8), we can also derive the distribution of scars in the fossil (or living) population as a whole,  $P_f(m)$ :

$$\begin{aligned} P_f(m) &= \int_0^\infty P_f(m|a)P_f(a)da \\ &= \frac{(R\rho + d)}{R + d} \left( \frac{R(1 - \rho)}{R + d} \right)^m \end{aligned} \quad (11)$$

That is,  $m$  is geometrically distributed with rate  $\frac{(R\rho + d)}{R + d}$ .

We have thus derived a model that describes the distribution of ages and scars in a fossil assemblage, conditioned on known values of the parameters  $R$ ,  $\rho$  and  $d$ . How are these values to be estimated? Imagine we are presented with a data set of  $N$  shells, each of which has a recorded age,  $a_i$  and number of scars  $m_i$ ,  $i \in 1 \dots N$ . From our model we can define a log-likelihood function  $\mathcal{L}(R, \rho, d)$ , the (log-)probability of generating these observations from our model with a specific choice of parameters:

$$\begin{aligned} \mathcal{L}(R, \rho, d) &= \log P(a_1, m_1, a_2, m_2 \dots a_N, m_N | R, \rho) \\ &= \sum_{i=1}^N \log P(m_i | a_i, R, \rho) + \log P(a_i | R, \rho) \\ &= \sum_{i=1}^N - (R + d)a_i + m_i \log(R(1 - \rho)a_i) + \log(R\rho + d) - \log(m_i!). \end{aligned} \quad (12)$$

Maximizing this function with respect to the model parameters yields the following relationships between the maximum-likelihood estimators (see Appendix for derivation):

$$\hat{R}(1 - \hat{\rho}) = \hat{\Omega} = \frac{\sum_{i=1}^N m_i}{\sum_{i=1}^N a_i}, \quad (13)$$

$$\hat{R}\hat{\rho} + \hat{d} = \frac{N}{\sum_{i=1}^N a_i}. \quad (14)$$

With these two simultaneous equations alone we cannot disambiguate the three model parameters. Instead, we can infer two distinct quantities: the rate of *unsuccessful* attacks,  $R(1 - \rho)$ , and the total mortality rate  $R\rho + d$ . In particular, without further information we cannot infer what proportion of overall mortality is caused by predation. However, by making reasonable assumptions regarding this proportion, we can make further progress towards identifying  $R$  and  $\rho$ , as we show in the next section.

*Limits on  $\mathbf{d}(\mathbf{a})$  and  $\mathbf{R}$  when  $\mathbf{d}(\mathbf{a})$  is constant.*—Since in the above  $\mathbf{d}(\mathbf{a})$  is unknown but assumed to be constant, further deductions about the limits of  $\mathbf{R}$ ,  $\rho$  and  $\mathbf{d}$  can be made. Adding the two estimator equations 13 and 14 together gives:

$$\hat{R} + \hat{d} = \frac{\sum_{i=1}^N m_i + N}{\sum_{i=1}^N a_i} \quad (15)$$

In other words, the scar distribution with age adds certain constraints on  $d$  and  $R$  even when  $d$  is

unknown. In general, as setting  $d = 0$  implies that  $\hat{R} = \frac{\sum_{i=1}^N m_i + N}{\sum_{i=1}^N a_i}$  and setting  $\rho = 0$  implies that  $\hat{R}$

$= \frac{\sum_{i=1}^N m_i}{\sum_{i=1}^N a_i}$ , the possible range both in  $R$  and  $d$  is  $\frac{N}{\sum_{i=1}^N a_i}$ , irrespective of the number of scars. The

limited range of possible values of  $R$  and  $\rho$  is shown by the shaded portion of Figure 5.

*Estimation of mortality rates.*—It is worth noting that estimation of overall mortality rates, as per equation 14, is a well-studied and complex problem in its own right. Notoriously, in natural populations this problem has been exacerbated by modern fishing (see e.g. Kenchington 2014) one of the few biases that does not affect the fossil record. One simple and classical approach has been to use the Hoenig Estimator (Hoenig 1983). This method takes the view that, as all individuals in a population must essentially have died by the time of the oldest specimen, then determining the age of such a specimen will allow estimation of the death rate, and thus proposes a relationship of the form:

$$\ln(\hat{R}\hat{\rho} + \hat{d}) = \alpha + \beta \ln(a_{\max}) \quad (16)$$

where  $a_{\max}$  is the maximum age.

$\alpha$  and  $\beta$  are two constants determined by Hoenig from published longevity data sets for mollusks to be 1.23 and -0.832 respectively. For example, if the age of the oldest specimen is 15 years, then  $\hat{R}\hat{\rho} + \hat{d} = 0.36$ . Within a given data set, this estimator naturally emerges as a case of ordinal statistics; since the ages of specimens are exponentially distributed (assuming constant mortality), the expected age of the *oldest* specimen is given by considering the expected value of the largest of  $N$  exponential random variables, each with mean  $1/(R\rho + d)$ , giving the relationship:

$$\mathbb{E}(a_{\max}) = H_N/(R\rho + d), \quad (17)$$

where  $H_N = \sum_{i=1}^N 1/i$  is the  $N$ th harmonic number. Hence, the theoretical expectation for the Hoenig estimator is:

$$\ln(\hat{R}\hat{\rho} + \hat{d}) = \ln H_N - \ln(a_{\max}) \quad (18)$$



### A simplified scenario with negligible and constant non-predatory death rate

Given the difficulties with estimating  $d$ , it is nevertheless possible with the above result to make further progress with the problem if one is willing to make another simplifying assumption, i.e., that most invertebrates eventually die from predation (e.g. Britton and Morton 1994; for a case involving vertebrates see e.g. Linnell et al. 1995). There are of course some exceptions, such as the mass deaths of some cephalopods after spawning (Rocha et al. 2001) and certain disease related catastrophic mass deaths (e.g. Lessios 1988; Fey et al. 2015), but it could be argued that these are the exception rather than the rule (Britton and Morton 1994). Classical experiments that aim to exclude the effects of predation tend to suggest that predation plays an important role in structuring communities (and thus that it is an important source of death; e.g. Reise 1977). Here, then, we consider the case that a constant  $d(a)$  (i.e. the non-predatory death-rate) might always be small compared to the death rate from predation, i.e.  $R\rho \gg d(a) \equiv d \forall a$ . It should be noted that in this instance, the fate of the individuals that made it into the fossil record, would be highly unusual, as they would represent the small number of snails that died non-predatory deaths. The assumption that  $d(a)$  is constant implies that the age structure of the fossils would again faithfully reflect that of the living population, but would be controlled almost entirely by predation, following the equation below:

$$P_f(a) = R\rho \exp(-R\rho a) \quad (19)$$

The distribution of scars in the both the living and fossil populations will follow a geometric distribution as in equation 11. However, if  $d \ll R\rho$ , the rate of the geometric distribution simplifies to  $\frac{(R\rho + d)}{R + d} \simeq \rho$ , with the straightforward corollary that the proportion of shells with at least one scar is  $1 - \rho$ . Hence, and somewhat counter-intuitively, the scar distribution would

depend only on the success rate of predation, and not on the attack rate of predation. This important result shows that for cases of overwhelming destructive predation as cause of death, the proportion of scarred snails in the fossil population (a statistic often collected) can be used to estimate the success rate of predation, without having to explicitly consider the distribution of ages of the preserved specimens. However, it should be noted that such an estimate will only be accurate if the fossils examined are not size (and thus age) biased. For example, if many small shells happen to be missing from the sample, then (as they are less likely to be scarred than larger, older shells), the proportion of scarred shells in the sample will be higher than in the unbiased population, leading to an underestimate of  $\rho$ . Given that biased samples are likely to be biased in this direction (see below), analysis of such would at least set a lower limit to  $\rho$ .

Are the assumptions behind this simplified model reasonable? A constant death rate after the juvenile stage has often been argued for (e.g. Perron 1983; Brey 1999). Whether or not predation is overwhelmingly dominant is less clear, but in studies of *Conus pennaceus* for example, Perron (1983) showed or argued that both our conditions, of constant adult death rates (c. 42% per year in his study) and overwhelming death from predation were likely to pertain, as empty shells were rare in his assemblages (c.f. Britton and Morton 1994). Interestingly, he also showed that 46.7% of adults showed at least one trace of unsuccessful attack, which would imply a success rate of attack of about 53.3% and thus an overall rate of attack of c. 0.79 per year per snail. We employ these numbers in the following section as an example. Nevertheless, even if predation *per se* is an important control on population structure, it seems unlikely that predation from peeling would be dominant over all over forms of death. This is an important caveat to be entered in consideration of the simplified model below.

### A simulated demonstration

To demonstrate the process of making inferences from real data sets, we outline the procedure on a simulated sample of 100 fossil shells, with parameters  $\rho = 0.533$  and  $R = 0.79$  (illustrative parameter values calculated from Perron (1983) as above). Simulated data was generated by randomly sampling 100 ages from the exponential distribution specified in equation 19, and then sampling the number of scars for each specimen, conditioned on the simulated age, from the Poisson distribution specified in equation 8. The code used can be found in Supplementary File 1. Our simulated data set is summarized in the histograms in Figure 3.

To perform the inference, we need to define a log-likelihood function: the log-probability of generating the observed data from the model, conditioned on putative values of the parameters  $R$  and  $\rho$ . Let  $a_1, a_2, \dots, a_N$  be the recorded ages of the  $N$  fossil shells (here  $N = 100$ ) and  $m_1, m_2, \dots, m_N$  be the corresponding number of scars. Then the log-likelihood function  $\mathcal{L}(R, \rho)$  is:

$$\begin{aligned} \mathcal{L}(R, \rho) &= \log P(a_1, m_1, a_2, m_2, \dots, a_N, m_N | R, \rho) \\ &= \sum_{i=1}^N \log P(m_i | a_i, R, \rho) + \log P(a_i | R, \rho) \\ &= \sum_{i=1}^N -Ra_i + m_i \log(R(1-\rho)a_i) + \log(R\rho) - \log(m_i!) \end{aligned} \quad (20)$$

Maximising  $\mathcal{L}(R, \rho)$  with respect to changes in  $R$  and  $\rho$  we obtain the following maximum-likelihood parameter estimates (see Appendix):

$$\begin{aligned} \hat{R} &= \frac{N + \sum_{i=1}^N m_i}{\sum_{i=1}^N a_i} \\ \hat{\rho} &= \frac{N}{N + \sum_{i=1}^N m_i}, \end{aligned} \quad (21)$$

with the following asymptotic expressions for the standard errors in these estimates (see Appendix):

$$\begin{aligned}\sigma_{\hat{R}} &= \frac{\hat{R}}{\sqrt{\sum_{i=1}^N (m_i + 1)}} \\ \sigma_{\hat{\rho}} &= \frac{\hat{\rho}\sqrt{(1-\hat{\rho})}}{\sqrt{N}}\end{aligned}\quad (22)$$

In the case of the simulated data shown in Figure 3, we have the following summary statistics:

$N = 100, \sum_{i=1}^N m_i = 87, \sum_{i=1}^N a_i = 235.84$ , giving parameter estimates (with 95% confidence intervals) of:  $\hat{R} = 0.79 \pm 0.11, \hat{\rho} = 0.53 \pm 0.07$ , in close agreement with the original parameters used.

How reliable are these estimators? We created one million simulated datasets of 100 shells from our model and performed the above inference procedure on each, recording the maximum-likelihood estimates of  $R$  and  $\rho$ . The results of this test are shown in Figure 4, showing the joint and marginal distributions of  $\hat{R}$  and  $\hat{\rho}$ . These results show that the inferred values are centred on the true parameter values, that estimates of both  $R$  and  $\rho$  are normally distributed and typically lie within 0.1 of the true value, and that errors in the two estimates are independent of each other.

What could we deduce from these numbers if we assumed that  $d$  was constant but unknown? As  $N = 100, \sum_{i=1}^N m_i = 87$  and  $\sum_{i=1}^N a_i = 235.84$ , from equation 15 we can see that the estimates of  $R = 0.79$  (and thus  $\rho = 0.53$ ) in our example when  $d = 0$  are therefore *maximum* values.

Similarly, even if  $\rho$  implausibly = 0,  $R$  cannot be below the limit set by the number of scars per shell, i.e., 0.36; and thus,  $d$  cannot be more than 0.43. The limits set by constant  $d$  are indicated in Figure 5 below.

### Modeling when the model assumptions are violated

We have considered scenarios where  $d$  is constant and small, and where  $d$  is constant but unknown. Furthermore, in the development of our model above we have made several assumptions about parameter dependencies that are open to question. We examine some of the possible violations of these assumptions, and their likely consequences in this section. In general, violations of the model assumptions lead to great uncertainty in expected outcomes unless the form of the violation is well characterized.

The model we have described assumes that  $\rho$  and  $R$  are independent of both snail age and number of pre-existing scars (i.e. the individual's past experience of predation). Here we will consider two further scenarios. The first is that  $R$  and/or  $\rho$  are no longer constant, but instead may depend on  $a$  and/or  $m$ . Such violations include so-called 'size refuges' and snail resistance to predation being weakened by previous, unsuccessful attacks. Secondly, we consider the possibility that the non-predatory death rate is both large and age-dependent. If the form of these dependencies is known, our model could be reformulated to account for them. However, given that our model is already generally under-determined by the likely available data, as illustrated in the examples above, it is unlikely that any precise age dependence on predatory or non-predatory effects can be inferred directly from observations. It should also be noted that previous analyses, made without a generative model, have implicitly made an assumption of age-independent predation by not modeling the effect of size refuges; our model simply makes this explicit. However, it will be instructive to consider the effect of each violation in terms of the qualitative effects on the likely observable data.

After discussing these two scenarios, we will then explore what analyses are appropriate when the age structure of the fossil assemblage does not align with that of the living. This may result through collection bias, or via the scenarios discussed above.

*Size refuges.*—Prey species can attempt to reduce predation pressure in a variety of ways, especially through use of refuges - adapting habitats or behaviors that allow them to at least partly evade their predators (e.g. Sih 1987; Ray and Stoner 1994; Wang and Wang 2012). One way of achieving this is by attaining a large size (Paine 1976; Vermeij 1976; Chase 1999; Schindler et al. 1994) that is beyond the handling capacity of a particular predator (for example, a particular crab may not be able to manipulate or break a very large gastropod shell). Indeed, such effects have been investigated in the fossil record (e.g. Harper et al. 2009). However, as discussed by Harper et al. (2009), the effects of size refuges are potentially complex.

Experimental evidence shows that predators are indeed typically prey-size selective (e.g. Paine 1976; Harding 2003). Nevertheless, larger individuals of a particular prey species may be vulnerable to larger members of a prey species, or indeed to different predators (Birkeland 1974). Furthermore, the refuge may be achieved by being attacked less often, or being less vulnerable to attack. In terms of our model then, size refuges might conceivably create a dependence of either  $R$  and/or  $\rho$  upon the size of the individual, and thus indirectly upon the age of the snail, thus violating the assumptions made earlier. These new dependencies may be of two varieties: decreasing attack rates,  $R$ , with increasing age, and/or decreasing success rates,  $\rho$ . If  $R$  decreases, then the rate at which large snails both die and accumulate scars will decrease, leading to an over-abundance of large, relatively unscarred individuals in the population. This would increase the summed age of specimens, while decreasing the summed scars, creating a lower apparent rate of unsuccessful predations. However, if  $\rho$  decreases, then the rate of death for large snails will

decrease via the replacement of lethal attacks with non-lethal, scarring attacks. Overall the rate of unsuccessful predation will increase, increasing the ratio in equation 21. It is likely, however, simply from the overall population structure, that the proportion of gastropods in a particular population that manage to reach a size refuge is likely to be low. This, combined with what will presumably be a differential effect of predation protection, implies that the effect of size refuges on our model is likely to be small.

*Scar weakening.*—Another possible effect on scar distribution might be that already scarred individuals are more vulnerable to either future attack or future death from predation, i.e. that  $R$  and/or  $\rho$  are dependent on  $m$ . In principle, if scarred individuals are more vulnerable to death from predation, then one would expect a lower number of scarred shells in the preserved assemblage, and heavily scarred individuals would be particularly under-represented. In addition, as large shells are more likely to be scarred than small ones, one would expect a preferential removal of large shells. Naturally this perturbation would affect the estimators in, for example, equation 21. However, once again, in the absence of a clear model of what effect these vulnerabilities would have, it is likely to be very difficult to detect their influence in a typical assemblage. It should be noted that the experimental evidence available does not support the view that the shell itself is weakened by scarring (Blundon and Vermeij 1983).

*Variable non-predatory death rates.* —We now wish to consider the case where the predatory death rate is neither small nor constant. If  $d(a)$  varies with age, then fossils will be recruited preferentially from snails of ages that have higher rates of death from causes other than durophagy, since all fossils must originate from non-durophagous deaths (c.f. Rigby 1958; Hallam 1967). In addition, the age structure of the living population also depends on the integral of the non-predatory death rate through age:

$$P_f(a) \propto d(a) \exp(-R\rho a) \exp\left(-\int_0^a d(a') da'\right). \quad (23)$$

If we had perfect knowledge of the non-predatory death rate  $d(a)$ , then inference of  $R$  and  $\rho$  would remain possible. Unfortunately, without simplifying assumptions, full knowledge of  $d(a)$  is generally lacking, both in terms of its magnitude and age dependence, even in living populations, and its inference from fossil ones seems implausible. Thus, in the case where  $d(a)$  is assumed to vary in an unknown way, we are forced to conclude that the age distribution of fossil shells can give us no useful information about the values of  $R$  and  $\rho$ . However, we can still make inferences on the basis of the conditional scar distribution,  $P_f(m|a)$ . Recall (equation 8) that this distribution does not depend on the non-predatory death rate, and thus is independent of any variations within it, or uncertainty as to its value.

As noted previously, the distribution  $P_f(m|a)$  depends solely on the combination of parameters  $\Omega \equiv R(1 - \rho)$ . From this observation, it is clear that we can only hope to infer this combined value, and will not be able to disambiguate  $R$  and  $\rho$ . By defining and maximising a log-likelihood based on equation 8 (see Appendix), we show that we retrieve the following estimator and standard error:

$$\hat{\Omega} = \frac{\sum_{i=1}^N m_i}{\sum_{i=1}^N a_i} \quad (24)$$

$$\sigma_{\Omega} = \frac{\hat{\Omega}}{\sqrt{\sum_{i=1}^N m_i}} \quad (25)$$

We show the result of applying this estimator to the same simulated data set used above, but with no assumptions about  $d$  in Figure 5. Here we can see that the estimator (and associated standard



error) defines a contour band in the  $R$  and  $\rho$  space, which contains the values of  $R$  and  $\rho$  used to generate the data.

### Comparison of predation parameters without knowledge of age structure

Suppose that the age-size relationship (ASR) of a particular gastropod is unknown, but that two different assemblages are available for study, which can be assumed to have the unknown ASR. Application of the estimators derived above, and thus estimation of the relative values of  $R$  and  $\rho$ , depends on our ability to determine the relative ages of different snails. What can we still infer, then? We consider first the simple case where there is an unknown linear ASR:  $a = k \times l$ , where  $l$  is the shell length. In this case, we can immediately estimate the ratio of  $\Omega \equiv R(1 - \rho)$  in the two populations:

$$\frac{\hat{\Omega}_A}{\hat{\Omega}_B} = \frac{\sum_A m \sum_B a}{\sum_B m \sum_A a} = \frac{\sum_A m \sum_B l}{\sum_B m \sum_A l} \quad (26)$$

where the subscripts of the summations indicate the assemblage over which ages, scars or lengths are to be summed. This can give us an estimate of the relative rates of non-lethal predation in the two populations, if not their absolute magnitudes in terms of specific time units. If, furthermore, either  $R$  or  $\rho$  were known to be the same across the two populations, this could give an estimate for the relative values of the other predation parameter.

What can we do if we do not know the form of the age-size relationship with enough precision to estimate the relative ages of snails with confidence? In this case, the relative estimation above would no longer be possible. With a suitable data set we can nonetheless ask a simpler question: are the predation parameters that generated the two assemblages the same? Consider the following procedure: for every shell in assemblage A, find a shell of matching size (within some

tolerance) in assemblage B, discarding shells that cannot be matched. If  $\Omega$  is the same for each population, the number of scars on each of two matching shells should come from the same Poisson distribution with an unknown mean (equation 8). Therefore, the shell with the most scars should be from assemblage A with probability  $q = 0.5$  (discarding instances where the number of scars are the same). Aggregating over many such pairings, we can perform a binomial significance test for the null hypothesis  $H_0: q = 0.5$ . If either  $R$  or  $\rho$  were known to be the same between the two populations then such a comparison of  $\Omega$  would equate to a comparison of the non-fixed predation parameter.

### Practical problems

We have derived a set of equations that allows us to relate scar and age frequency in fossil populations to important parameters that are governed by predation and success rates, and shown that these can even be disambiguated under certain assumptions. However, various practical problems in extracting useful data from fossils are likely to hinder the unbiased reconstruction of these parameters.

*Age—size relationship.*—The most obvious problem with the general and constant  $d$  models presented above is that they depend on age as an important parameter, but this cannot be directly observed in the fossil record: typically, it must be inferred from size. The relationship between size and age in organisms is an often complex one and cannot easily be established, especially in an extinct taxon. Various methods have been used to age living gastropods (e.g.: opercula growth rings (Ilano et al. 2004; Miranda et al. 2008); statolith variation or element variation in the shell (Richardson et al. 2005); or stable isotope variation (e.g. Wefer and Berger 1991; Purton and Brasier 1997; reviewed in Ivany 2012), but these are not always applicable to fossil examples. If

there is a strongly non-linear relationship between size and age, then the size distribution of a fossil population will not be indicative of the age distribution and even if death rates are constant, unusual fossil size distributions may thus result (Rigby 1958). Gastropods, like most organisms, show slowing rates of growth as they age, until eventually they will grow very little even as time marches on. Needless to say, if size cannot reliably be translated into age, then fossil data cannot be brought to bear on the inference problems we discuss, except in the simple case of small constant  $d$ , where  $\rho$  (but not  $R$ ) can be inferred.

*Pre-existing datasets.* —Another issue that arises is that our model relies on measurements of the actual number of scars in individuals and their age (or at least size). Typically, however, data have been collected at a much lower resolution than this, for example consisting simply of what proportion of snails in a collection show signs of predation, or further dividing shells into simple size classes (see Alexander and Dietl [2003] for a discussion of how such data can be collected, and Harper et al. [2009] for a notable exception). Whilst it would be possible to generate expressions for both of these datasets from our equations (with suitable definitions for small and large), this would further reduce the resolving power of our approach.

Another problem with pre-existing datasets is that any sort of collection is likely to show collection bias, if it has not been specifically bulk-collected (Powell and Kowaleski [2002]; or perhaps target sampled in the sense of Ottens et al. [2012]) to avoid such bias. Notable such biases include preferential collection of larger, perfect (i.e., unscarred) or more interesting (i.e., more scarred) specimens. Measurements of both age and scar distributions would obviously be adversely affected by these biases.

*Biostratigraphic processes.*—Fossil assemblages, even when collected in bulk or otherwise (Ottens

et al. 2012) to avoid collection bias still show various types of preservation biases (Kidwell 2002). These include (non-exhaustively): preferential preservation of larger, more robust individuals; hydrodynamic sorting through transport (Molinaro et al. 2013; Chattopadhyay et al. 2013a, b) and non-uniform sampling of living populations (e.g. fossilization of organisms where young and adults live in different environments), with the general tendency being to remove smaller specimens from the record, as shown by Cooper et al. (2006). Museum collections, suffering from both biostratigraphic and collection bias, are likely to be particularly unrepresentative. This bias suggests that it may prove profitable to consider only the larger sizes in an assemblage when performing the inferences we demonstrate herein, and to condition our estimators on having excluded specimens below a certain size.

Another issue would be time averaging of assemblages (Kidwell et al. 1991; Kidwell 2002) but the effect of this will partly depend on whether or not the populations being recruited from were steady-state or not (see below). If populations were steady-state but noisy however, time averaging might have the effect of making the parameter estimations from particular assemblages more representative of the overall predation pressure on the parent living ones (for a useful discussion of collection bias and averaging, see Cadée et al. [1997]).

Finally, the confounding effects of other organisms should not be neglected. For example, it seems that post-mortem attack of shells by crabs is common, either because they mistakenly think they might be occupied, or because they are occupied by e.g., hermit crabs (Walker and Yamada 1993). In addition, hermit crabs from the early Jurassic onwards are likely to exert significant controls on shell-frequency distributions by preferentially concentrating shells of their preferred size (see e.g. Shimoyama 1985; Walter 1989). Furthermore, as commented on above, many predators (especially the asteroids) do not leave clear traces of their attacks, successful or

otherwise (Carter 1968). The complex effects of multiple predators, either on the snails or each other, can unfortunately only be treated in aggregate in our method.

*Non-stationary populations and events.*—So far, we have considered living populations in a steady state, at least relative to the time scale of the fossil record: for a given assemblage, population size and structure and rates of predation remain steady. However, we know that populations are often highly unstable through time, including predictable predator-prey patterns of population oscillations (c.f. Leighton 2002). The effect of these sorts of fluctuations on the fossil record will partly depend on the timescale of fossilization relative to them. For example, an obrutritional deposit that provides a snapshot of the living and dead population at a particular time will relate in a different way to an assemblage that slowly formed in a low sedimentation rate environment.

### **Empirical studies**

We wish finally to comment briefly on the empirical studies by various authors that have examined the numbers of scars in living gastropod populations in different environmental conditions (e.g. Cadée et al. 1997; Schmidt 1989; Molinaro et al. 2014; Stafford et al. 2015). One notable feature of all these studies is the high degree of variation of scar frequency between different microhabitats; other features such as potential evidence for size refuges (i.e., larger shells being less vulnerable to attack (Vermeij 1982; Schmidt 1989; Harper et al. 2009) are less consistently attested to. In any case, it should be noted that assessment of relative rates of scarring in different size classes is problematic without an explicit size-age relationship.

Nevertheless, a series of studies have shown that scar frequency, as measured by the proportion of snails with at least one scar, seems to track predator frequency, with the conclusion being

drawn that, in general, scar frequency can be taken as a proxy of predation intensity (our  $R$ ) and thus predation mortality (our  $R\rho$ ) - e.g. Stafford et al. (2015); Molinaro et al. (2014); Cadée et al. (1997). For example, the data set of Molinaro et al. (2014) shows that more snails in calmer sheltered environments tend to have at least one scar compared to those in more exposed environments, and relate this to the greater densities of predators (in this case, crabs) in the former environment. If we make the assumption of both small and constant  $d$ , then these data seem to suggest that  $\rho$  is not the controlling variable, contrary to our model. However, it might be that in an environment with many predators, any particular attacker is more likely to be disturbed by a competitor or (indeed) its own predator. If we make the assumption that  $d(a)$  is constant but of unknown size, then the proportion of snails with at least one scar in a population is given by  $1 - \frac{(R\rho + d)}{R + d}$  (from equation 11). Our model shows that when only  $R$  is varying from site to site, one would indeed expect to see more scars in snails from sites with higher attack rates. However, the rate of scarring derived from this equation can vary with any of  $d$ ,  $\rho$  or  $R$ , suggesting that varying attack rates might not be the only possible explanation for these data. For example, if the snails living in a calmer environment had on average a lower rate of *non-predatory* death compared to those in more exposed environments, then one expect them to accumulate more scars too. The weak inverse correlation that Molinaro et al. (2014) demonstrate between amount of scarring and body size would be consistent with this view. In general, then, our model provides a theoretical background in which to interpret summary field data, and offers pathways towards understanding their meaning more fully.

## Discussion

Our model provides a theoretical approach to estimating rates of predation and predation success that goes considerably beyond previous theoretical treatments of the subject. Such a model is necessary for relating observations in the fossil record to inferred underlying processes such as predation. However, our model shows that in practice, predation and predation success rates cannot be fully disambiguated except under specific assumptions, of constant and low rates of non-predatory death, which do however have some empirical support. Even in such circumstances, the vagaries of the fossilization and collection processes would make estimation of the parameters of interest unreliable without further assumptions. The model we have used and the obstacles we discuss clarify the sorts of data and their associated biases that would need to be considered in order to in fact draw reliable inferences about the evolution of predation through time from healed scars in gastropods.

Despite these somewhat pessimistic conclusions, our model points towards various lines of future research that may help improve prospects of predation rate estimation. These include: comparing fossil assemblages of living taxa with their living populations (e.g. Shimoyama (1985) or recently-extinct taxa with their close living relatives; see Cooper et al. [2006]); comparing different living or fossil assemblages where we have reason to believe that many factors have remained the same between them (e.g. two or more populations where predation success is thought to be the same; here changes in scar numbers would thus be indicative of changes in attack rate. For a detailed discussion of such standardization procedures see Dietl and Kosloski [2013] and Kosloski et al. [2017]); incorporation of absolute age estimates into size data (e.g., from stable isotope fluctuations [Purton and Brasier 1997]); bulk or targeted collection of specimens to eliminate collection bias and explicit modeling of population predatory-prey or

other non-stationary models with respect to fossilization regimes. In other words, consideration of the long-standing problem of estimating predation rates through times illuminates many of the classical problems associated with inference of life processes from the fossil record in general.

### **Acknowledgements**

We are grateful for discussions with J. S. Peel, A. Lindström, and J.-O. Ebbestad over the many years that what became known as the “blue snail problem” took to be formulated, and for very helpful reviews including those by E. M. Harper and G. Dietl. This work was funded by the Swedish Research Council (Vetenskapsrådet, VR, grant no. 621-2011-4703 to GEB).



## References

- Abrams, P. A. 1989. The evolution of rates of successful and unsuccessful predation. *Evolutionary Ecology* 3:157–171.
- Alexander, R. R., and G. P. Dietl. 2003. The fossil record of shell-breaking predation on marine bivalves and gastropods. Pp 141–176 in P. Kelley, M. Kowalewski, and T. A. Hansen, eds. *Predator—Prey Interactions in the Fossil Record*. Springer, New York.
- Andrews, E. 1935. Shell repair by the snail, *Neritina*. *Journal of Experimental Zoology* 70:75–107.
- Bengtson, S. 2002. Origins and early evolution of predation. *The Paleontological Society Papers* 8:289–318.
- Bengtson, S., and Y. Zhao. 1992. Predatorial borings in late Precambrian mineralized exoskeletons. *Science* 257:367–369.
- Bicknell, R. D., and J. R. Paterson. 2018. Reappraising the early evidence of durophagy and drilling predation in the fossil record: implications for escalation and the Cambrian Explosion. *Biological Reviews* 93:754–784.
- Birkeland, C. 1974. Interactions between a sea pen and seven of its predators. *Ecological Monographs* 44:211–232.
- Blundon, J., and G. Vermeij. 1983. Effect of shell repair on shell strength in the gastropod *Littorina irrorata*. *Marine Biology* 76:41–45.
- Brey, T. 1999. Growth performance and mortality in aquatic macrobenthic invertebrates.

Advances in Marine Biology 35:153–223.

Britton, J. C., and B. Morton. 1994. Marine carrion and scavengers. *Oceanography and Marine Biology: an Annual Review* 32: 369-434.

Budd, G. E. 2000. Ecology of nontrilobite arthropods and lobopods in the Cambrian. Pp 404–427 in A. Yu. Zhuravlev and R. Riding, eds. *The Ecology of the Cambrian Radiation*. Columbia University Press, New York.

Budd, G. E., and Mann, R. P. 2018. History is written by the victors: the effect of the push of the past on the fossil record. *Evolution* 72:2276–2291.

Caddy, J. F. 1991. Death rates and time intervals: is there an alternative to the constant natural mortality axiom? *Reviews in Fish Biology and Fisheries* 1:109–138.

Cadée, G. C., S. E. Walker, and K. W. Flessa. 1997. Gastropod shell repair in the intertidal of Bahia la Choya (N. Gulf of California). *Palaeogeography, Palaeoclimatology, Palaeoecology* 136:67–78.

Carriker, M. R., and E. L. Yochelson. 1968. Recent gastropod boreholes and Ordovician cylindrical borings. *United States Geological Survey Professional Papers* 593-B:B1–B26.

Carter, R. M. 1968. On the biology and palaeontology of some predators of bivalved Mollusca. *Palaeogeography, Palaeoclimatology, Palaeoecology* 4:29–65.

Chase, J. M. 1999. Food web effects of prey size refugia: variable interactions and alternative stable equilibria. *The American Naturalist* 154:559–570.

Chattopadhyay, D., A. Rathie, and A. Das. 2013a. The effect of morphology on postmortem

transportation of bivalves and its taphonomic implications. *Palaios* 28:203–209.

Chattopadhyay, D., A. Rathie, D. J. Miller, and T. K. Baumiller. 2013b. Hydrodynamic effects of drill holes on postmortem transportation of bivalve shells and its taphonomic implications. *Palaios* 28:875–884.

Cooper, R. A., P. A. Maxwell, J. S. Crampton, A. G. Beu, C. M. Jones, and B. A. Marshall. 2006. Completeness of the fossil record: estimating losses due to small body size. *Geology* 34:241–244.

Dietl, G. P., and M. E. Kosloski. 2013. On the measurement of repair frequency: how important is data standardization? *Palaios* 28:394–402.

Ebbestad, J. O. R., and C. A. Stott. 2008. Failed predation in Late Ordovician gastropods (Mollusca) from Manitoulin Island, Ontario, Canada. *Canadian Journal of Earth Sciences* 45:231–241.

Feder, H. M. 1963. Gastropod defensive responses and their effectiveness in reducing predation by starfishes. *Ecology* 44:505–512.

Fey, S. B., A. M. Siepielski, S. Nusslé, K. Cervantes-Yoshida, J. L. Hwan, E. R. Huber, M. J. Fey, A. Catenazzi, and S. M. Carlson. 2015. Recent shifts in the occurrence, cause, and magnitude of animal mass mortality events. *Proceedings of the National Academy of Sciences* 112:1083–1088.

Gosselin, L. A., and P.-Y. Qian. Juvenile mortality in benthic marine invertebrates. 1997. *Marine Ecology Progress Series* 146:265–282.

- Hallam, A. 1967. The interpretation of size-frequency distributions in molluscan death assemblages. *Palaeontology* 10:25–42.
- Harding, J. M. 2003. Predation by blue crabs, *Callinectes sapidus*, on Rapa whelks, *Rapana venosa*: possible natural controls for an invasive species? *Journal of Experimental Marine Biology and Ecology* 297:161–177.
- Harper, E. M. 2006. Dissecting post-Palaeozoic arms races. *Palaeogeography, Palaeoclimatology, Palaeoecology* 232:322–343.
- Harper, E. M., and L. S. Peck. 2016. Latitudinal and depth gradients in marine predation pressure. *Global Ecology and Biogeography* 25:670–678.
- Harper, E. M., L. S. Peck, and K. R. Hendry. 2009. Patterns of shell repair in articulate brachiopods indicate size constitutes a refuge from predation. *Marine Biology* 156:1993–2000.
- Hoenig, J. M. 1983. Empirical use of longevity data to estimate mortality rates. *Fishery Bulletin* 82:898–903.
- Hull, P. M. 2017. Emergence of modern marine ecosystems. *Current Biology* 27:R466–R469.
- Ilano, A. S., A. Ito, K. Fujinaga, and S. Nakao. 2004. Age determination of *Buccinum isaotakii* (Gastropoda: Buccinidae) from the growth striae on operculum and growth under laboratory conditions. *Aquaculture* 242:181–195.
- Ishikawa, M., T. Kase, and H. Tsutsui. 2018. Deciphering deterministic factors of predation pressures in deep time. *Scientific Reports* 8:17532.
- Ivany, L. C. 2012. Reconstructing paleoseasonality from accretionary skeletal carbonates—

challenges and opportunities. *The Paleontological Society Papers* 18:133–166.

Jones, O.R., A. Scheuerlein, R. Salguero-Gómez, C. G. Camarda, R. Schaible, B. B. Casper, J. P. Dahlgren, J. Ehrlén, M. B. García, E. S. Menges, and P. F. Quintana-Ascencio. 2014. Diversity of ageing across the tree of life. *Nature* 505:169–173.

Kenchington, T. J. 2014. Natural mortality estimators for information-limited fisheries. *Fish and Fisheries* 15:533–562.

Kidwell, S. M. 2002. Time-averaged molluscan death assemblages: palimpsests of richness, snapshots of abundance. *Geology* 30:803–806.

Kidwell, S. M., and D. W. J. Bosence. 1991. Taphonomy and time-averaging of marine shelly faunas. 1991. Pp 115–209 in P. A. Allison and D. E. G. Briggs, eds. *Taphonomy: releasing the data locked in the fossil record*. Plenum Press, New York.

Kosloski, M. E., G. P. Dietl, and J. C. Handley. 2017. Anatomy of a cline: dissecting anti-predatory adaptations in a marine gastropod along the US Atlantic coast. *Ecography* 40:1285–1299.

Leighton, L. R. 2002. Inferring predation intensity in the marine fossil record. *Paleobiology* 28:328–342.

Lessios, H. 1988. Mass mortality of *Diadema antillarum* in the Caribbean: what have we learned? *Annual Review of Ecology and Systematics* 19:371–393.

Lindstrom, A., and J. S. Peel. 2005. Repaired injuries and shell form in some Palaeozoic pleurotomarioid gastropods. *Acta Palaeontologica Polonica* 50:697–704.

Linnell, J. D., R. Aanes, and R. Andersen. 1995. Who killed Bambi? the role of predation in the neonatal mortality of temperate ungulates. *Wildlife Biology* 1:209–223.

Miranda, R. M., K. Fujinaga, and S. Nakao. 2008. Age and growth of *Neptunea arthritica* estimated from growth marks in the operculum. *Marine Biology Research* 4:224–235.

Molinaro, D. J., B. M. Collins, M. E. Burns, E. S. Stafford, and L. R. Leighton. 2013. Do predatory drill holes influence the transport and deposition of gastropod shells? *Lethaia* 46:508–517.

Molinaro, D. J., E. S. Stafford, B. M. Collins, K. M. Barclay, C. L. Tyler, and L. R. Leighton. 2014. Peeling out predation intensity in the fossil record: a test of repair scar frequency as a suitable proxy for predation pressure along a modern predation gradient. *Palaeogeography, Palaeoclimatology, Palaeoecology* 412:141–147.

Ottens, K. J., G. P. Dietl, P. H. Kelley, and S. D. Stanford. 2012. A comparison of analyses of drilling predation on fossil bivalves: bulk-vs. taxon-specific sampling and the role of collector experience. *Palaeogeography, Palaeoclimatology, Palaeoecology* 319:84–92.

Paine, R. 1976. Size-limited predation: an observational and experimental approach with the *Mytilus-Pisaster* interaction. *Ecology* 57:858–873.

Perron, F. E. 1983. Growth, fecundity, and mortality of *Conus pennaceus* in Hawaii. *Ecology* 64:53–62.

———. 1986. Life history consequences of differences in developmental mode among gastropods in the genus *Conus*. *Bulletin of Marine Science* 39:485–497.

Purton, L., and M. Brasier. 1997. Gastropod carbonate  $\delta^{18}\text{O}$  and  $\delta^{13}\text{C}$  values record strong

seasonal productivity and stratification shifts during the late Eocene in England. *Geology* 25:871–874.

Ray, M., and A. W. Stoner. 1994. Experimental analysis of growth and survivorship in a marine gastropod aggregation: balancing growth with safety in numbers. *Marine Ecology Progress Series* 105:47–59.

Reise, K. 1977. Predation pressure and community structure of an intertidal soft-bottom fauna. Pp 513–519 in B. F. Keegan, P. J. S. Boaden, and P. O. Ceidigh, eds. *Biology of benthic organisms*. Elsevier, Amsterdam.

Richardson, C., C. Saurel, C. Barroso, and J. Thain. 2005. Evaluation of the age of the red whelk *Neptunea antiqua* using statoliths, opercula and element ratios in the shell. *Journal of Experimental Marine Biology and Ecology* 325:55–64.

Rigby, J. K. 1958. Frequency curves and death relationships among fossils. *Journal of Paleontology* 32:1007–1009.

Rocha, F., Á. Guerra, and Á. F. González. 2001. A review of reproductive strategies in cephalopods. *Biological Reviews* 76:291–304.

Rumrill, S. S. 1990. Natural mortality of marine invertebrate larvae. *Ophelia* 32:163–198.

Schindler, D. E., B. M. Johnson, N. A. MacKay, N. Bouwes, and J. F. Kitchell. 1994. Crab: snail size-structured interactions and salt marsh predation gradients. *Oecologia* 97:49–61.

Schmidt, N. 1989. Paleobiological implications of shell repair in Recent marine gastropods from the northern Gulf of California. *Historical Biology* 3:127–139.

- Schoener, T. W. 1979. Inferring the properties of predation and other injury-producing agents from injury frequencies. *Ecology* 60:1110–1115.
- Shimoyama, S. 1985. Size-frequency distribution of living populations and dead shell assemblages in a marine intertidal sand snail, *Umbonium (Suchium) moniliferum* (Lamarck), and their palaeoecological significance. *Palaeogeography, Palaeoclimatology, Palaeoecology* 49:327–353.
- Shoup, J. B. 1968. Shell opening by crabs of the genus *Calappa*. *Science* 160:887–888.
- Signor, P. W., and C. E. Brett. 1984. The mid-Paleozoic precursor to the Mesozoic marine revolution. *Paleobiology* 10:229–245.
- Sih, A. 1987. Prey refuges and predator-prey stability. *Theoretical Population Biology* 31:1–12.
- Sih, S., G. Englund, and D. Wooster. 1998. Emergent impacts of multiple predators on prey. *Trends in Ecology & Evolution* 13:350–355.
- Stafford, E. S., C. L. Tyler, and L. R. Leighton. 2015. Gastropod shell repair tracks predator abundance. *Marine Ecology* 36:1176–1184.
- Stanley, S. M. 1973. An ecological theory for the sudden origin of multicellular life in the late Precambrian. *Proceedings of the National Academy of Sciences* 70:1486–1489.
- Suzuki, K., T. Hiraishi, K. Yamamoto, and K. Nashimoto. 2002. Estimation of natural mortality and exploitation rates of whelk *Neptunea arthritica* by multiple tagging experiment. *Fisheries Science* 68:87–94.



- Vermeij, G. J. 1976. Interoceanic differences in vulnerability of shelled prey to crab predation. *Nature* 260:135.
- . 1977. The Mesozoic marine revolution: evidence from snails, predators and grazers. *Paleobiology* 3:245–258.
- . 1982. Unsuccessful predation and evolution. *The American Naturalist* 120:701–720.
- . 1983. Shell-breaking predation through time. Pp 649–669 *in* M. J. S. Tevesz and P. L. McCall, eds. *Biotic interactions in recent and fossil benthic communities*. Springer, New York.
- . 1993. *Evolution and escalation: an ecological history of life*. Princeton University Press, New York.
- Vermeij, G. J., D. E. Schindel, and E. Zipser. 1981. Predation through geological time: evidence from gastropod shell repair. *Science* 214:1024–1026.
- Walker, S. E. 1989. Hermit crabs as taphonomic agents. *Palaios* 4:439–452.
- Walker, S. E., and S. Behrens Yamada. 1993. Implications for the gastropod fossil record of mistaken crab predation on empty mollusc shells. *Palaeontology* 36:735–741.
- Wang, Y. and J. Wang. 2012. Influence of prey refuge on predator–prey dynamics. *Nonlinear Dynamics* 67:191–201.
- Wefer, G., and W. H. Berger. 1991. Isotope paleontology: growth and composition of extant calcareous species. *Marine Geology* 100:207–248.

## Appendix

*Derivation of Poisson distribution for  $P(m|a)$ .* —From the main text, recall that the process of scar acquisition with age follows the following master equation:

$$\frac{dP(m|a)}{da} = R(1 - \rho)[P(m - 1|a) - P(m|a)]. \quad (\text{A.1})$$

Consider the following generating equation

$$F(z) = \sum_{m=-\infty}^{\infty} z^m P(m|a). \quad (\text{A.2})$$

From this definition, we have the following identities:

$$\frac{dF}{da} = \sum_{m=-\infty}^{\infty} z^m \frac{dP(m|a)}{da}, \quad (\text{A.3})$$

$$zF = \sum_{m=-\infty}^{\infty} z^m P(m - 1|a). \quad (\text{A.4})$$

Combining these identities, we can rewrite equation A.1 as:

$$\frac{dF}{da} = R(1 - \rho)(z - 1)F, \quad (\text{A.5})$$

with the elementary solution:

$$F = \exp(R(1 - \rho)(z - 1)a), \quad (\text{A.6})$$

To retrieve the probability distribution, we note that:

$$P(m|a) = \left. \frac{d^m F}{dz^m} \right|_{z=0} = \frac{(R(1 - \rho)a)^m \exp(-R(1 - \rho)a)}{m!}, \quad (\text{A.7})$$

and hence  $P(m|a)$  is Poisson-distributed with mean  $R(1 - \rho)a$ .

*Derivation of maximum-likelihood estimates for constant  $\mathbf{d}$ , unbiased age sample.*—Consider a data set of  $N$  fossil shells, where shell  $i$  has age  $\mathbf{a}_i$  and number of scars  $\mathbf{m}_i$ . For a model with a constant non-predatory death rate, we have the follow log-likelihood function for the model parameters  $\mathbf{R}$  (attack rate),  $\boldsymbol{\rho}$  (success probability) and  $\square$ .

$$\mathcal{L}(R, \rho, d) = \sum_{i=1}^N (-(R + d)a_i + m_i \log(R(1 - \rho)a_i) + \log(R\rho + d) - \log(m_i!)) \quad (\text{A.8})$$

To derive the maximum-likelihood estimators for this model, we must maximize this log-likelihood. First, we take the derivatives of  $\mathcal{L}$  with respect to  $R$ ,  $\rho$  and  $d$ :

$$\frac{\partial \mathcal{L}}{\partial R} = \sum_{i=1}^N \left( -a_i + \frac{m_i}{R} + \frac{\rho}{R\rho + d} \right) \quad (\text{A.9})$$

and

$$\frac{\partial \mathcal{L}}{\partial \rho} = \sum_{i=1}^N \left( -\frac{m_i}{1 - \rho} + \frac{R}{R\rho + d} \right) \quad (\text{A.10})$$

and

$$\frac{\partial \mathcal{L}}{\partial d} = \sum_{i=1}^N \left( -a_i + \frac{1}{R\rho + d} \right) \quad (\text{A.11})$$

To maximize the likelihood, these derivatives must be zero evaluated at the maximum-likelihood estimate values  $\hat{R}, \hat{\rho}, \hat{d}$ . Therefore, from equation A.11 we have:

$$\begin{aligned} \sum_{i=1}^N \left( -a_i + \frac{1}{\hat{R}\hat{\rho} + \hat{d}} \right) &= 0 \\ \Rightarrow \hat{R}\hat{\rho} + \hat{d} &= \frac{N}{\sum_{i=1}^N a_i}. \end{aligned} \quad (\text{A.12})$$

From equation A.9, and substituting the previous result, we have

$$\begin{aligned} \sum_{i=1}^N \left( -a_i + \frac{m_i}{\hat{R}} + \frac{\hat{\rho}}{\hat{R}\hat{\rho} + \hat{a}} \right) &= 0 \\ \Rightarrow \hat{R}(1 - \hat{\rho}) &= \frac{\sum_{i=1}^N m_i}{\sum_{i=1}^N a_i}, \end{aligned} \quad (\text{A.13})$$

*Derivation of maximum-likelihood estimates and standard errors, for negligible, constant  $\mathbf{d}$ , unbiased age sample.*—Consider a data set of  $N$  fossil shells, where shell  $i$  has age  $a_i$  and number of scars  $m_i$ . For a model with a constant non-predatory death rate, we have the following log-likelihood function for the model parameters  $\mathbf{R}$  (attack rate),  $\rho$  (success probability).

$$\mathcal{L}(R, \rho) = \sum_{i=1}^N (-Ra_i + m_i \log(R(1 - \rho)a_i) + \log(R\rho) - \log(m_i!)) \quad (\text{A.14})$$

As above, to derive the maximum-likelihood estimators for this model, we must maximize this log-likelihood. First, we take the derivatives of  $\mathcal{L}$  with respect to  $R$ ,  $\rho$ :

$$\frac{\partial \mathcal{L}}{\partial R} = \sum_{i=1}^N \left( -a_i + \frac{m_i}{R} + \frac{1}{R} \right) \quad (\text{A.15})$$

and

$$\frac{\partial \mathcal{L}}{\partial \rho} = \sum_{i=1}^N \left( -\frac{m_i}{1 - \rho} + \frac{1}{\rho} \right) \quad (\text{A.16})$$

To maximize the likelihood, these derivatives must be zero evaluated at the maximum-likelihood estimate values  $\hat{R}, \hat{\rho}$ . From equation A.11, we have

$$\begin{aligned} \sum_{i=1}^N \left( -a_i + \frac{m_i}{\hat{R}} + \frac{1}{\hat{R}} \right) &= 0 \\ \Rightarrow \hat{R} &= \frac{\sum_{i=1}^N (m_i + 1)}{\sum_{i=1}^N a_i}, \end{aligned} \quad (\text{A.17})$$

and from equation A.16 we have:

$$\begin{aligned} \sum_{i=1}^N \left( -\frac{m_i}{1-\hat{\rho}} + \frac{1}{\hat{\rho}} \right) &= 0 \\ \Rightarrow \hat{\rho} &= \frac{N}{\sum_{i=1}^N (m_i + 1)} \end{aligned} \quad (\text{A.18})$$

To calculate standard errors for these estimators, we use Laplace's method, which supplies the approximation:

$$\Sigma = \begin{bmatrix} \sigma_R^2 & \sigma_{R\rho} \\ \sigma_{R\rho} & \sigma_\rho^2 \end{bmatrix} \approx H^{-1} = - \begin{bmatrix} \frac{\partial^2 \mathcal{L}}{\partial R^2} \Big|_{\hat{\rho}} & \frac{\partial^2 \mathcal{L}}{\partial R \partial \rho} \Big|_{\hat{\rho}} \\ \frac{\partial^2 \mathcal{L}}{\partial \rho \partial R} \Big|_{\hat{\rho}} & \frac{\partial^2 \mathcal{L}}{\partial \rho^2} \Big|_{\hat{\rho}} \end{bmatrix}^{-1} \quad (\text{A.19})$$

where  $\Sigma$  is the covariance matrix of standard errors. To apply this approximation, we require the second derivatives of the log-likelihood function:

$$\frac{\partial^2 \mathcal{L}}{\partial R^2} = - \sum_{i=1}^N \frac{m_i + 1}{R^2}, \quad (\text{A.20})$$

and:

$$\begin{aligned} \frac{\partial^2 \mathcal{L}}{\partial \rho^2} &= \sum_{i=1}^N \left[ -\frac{m_i}{(1-\rho)^2} - \frac{N}{\rho^2} \right. \\ &\quad \left. - \rho^2 \sum_{i=1}^N m_i - (1-\rho)^2 N \right] \\ &= \frac{\rho^2(1-\rho)^2}{-\rho^2 \sum_{i=1}^N (m_i + 1) + 2N\rho - N} \\ &= \frac{\rho^2(1-\rho)^2}{N(-\rho^2/\hat{\rho} + 2\rho - 1)} \\ &= \frac{N(-\rho^2/\hat{\rho} + 2\rho - 1)}{\rho^2(1-\rho)^2}, \end{aligned} \quad (\text{A.21})$$

and:

$$\frac{\partial^2 \mathcal{L}}{\partial R \partial \rho} = \frac{\partial^2 \mathcal{L}}{\partial \rho \partial R} = 0. \quad (\text{A.22})$$

Therefore:

$$\begin{aligned}\sigma_R &= - \left( \frac{\partial^2 \mathcal{L}}{\partial R^2} \Big|_{\hat{R}} \right)^{-1/2} \\ &= \frac{\hat{R}}{\sqrt{\sum_{i=1}^N (m_i + 1)}}\end{aligned}\quad (\text{A.23})$$

$$\begin{aligned}\sigma_\rho &= - \left( \frac{\partial^2 \mathcal{L}}{\partial \rho^2} \Big|_{\hat{\rho}} \right)^{-1/2} \\ &= \frac{\hat{\rho} \sqrt{(1 - \hat{\rho})}}{\sqrt{N}}\end{aligned}\quad (\text{A.24})$$

*Derivation of maximum-likelihood estimates for biased age distribution.* —Consider again a data set of  $N$  fossil shells, where shell  $i$  has age  $a_i$  and number of scars  $m_i$ . Since the age distribution is biased, as a result of either biased collection or fossilization (non-constant  $d$ ), we cannot use  $P(\mathbf{a})$  for inference, but instead are restricted to using the conditional distribution of scar numbers,  $P(\mathbf{m}|\mathbf{a})$ :

$$P(\mathbf{m}|\mathbf{a}) = \frac{\exp(-R(1-\rho)a)(R(1-\rho)a)^m}{m!} \quad (\text{A.25})$$

First, we state the log-likelihood for  $R$  and  $\rho$ :

$$\mathcal{L}(R, \rho) = \sum_{i=1}^N (m_i \log(R(1-\rho)a_i) - R(1-\rho)a_i - \log(m_i!)) \quad (\text{A.26})$$

Since this likelihood has effectively only one parameter,  $\Omega = R(1-\rho)$ , we will only be able to make estimates of this combined quantity, leaving a fundamental ambiguity between  $R$  and  $\rho$ .

Redefining the log-likelihood in terms of  $\Omega$ :

$$\mathcal{L}(\Omega) = \sum_{i=1}^N (m_i \log(\Omega a_i) - \Omega a_i - \log(m_i!)) \quad (\text{A.27})$$

Now taking the first derivative with respect to  $\Omega$  and setting to zero to identify the maximum likelihood value:

$$\begin{aligned}\frac{d\mathcal{L}(\Omega)}{d\Omega} &= \sum_{i=1}^N \left( \frac{m_i}{\Omega} - a_i \right) = 0 \\ \Rightarrow \hat{\Omega} &= \frac{\sum_{i=1}^N m_i}{\sum_{i=1}^N a_i}\end{aligned}\tag{A.28}$$

To estimate the standard error, we take the second derivative of the log-likelihood and make a Laplace approximation:

$$\begin{aligned}\frac{d^2\mathcal{L}(\Omega)}{d\Omega^2} \Big|_{\hat{\Omega}} &= -\frac{1}{\sigma_{\hat{\Omega}}^2} = -\frac{1}{\hat{\Omega}^2} \sum_{i=1}^N m_i \\ \Rightarrow \sigma_{\Omega} &= \frac{\hat{\Omega}}{\sqrt{\sum_{i=1}^N m_i}}\end{aligned}\tag{A.29}$$

For Peer Review

### Figure captions

**Figure 1.** Example of a large healed injury (scar) in the buccinid *Neptunea angulata* from the Pliocene–Pleistocene Red Crag of East Anglia (from the Phillip Cambridge collection in the Sedgwick Museum, Cambridge, UK). Scale bar = 1 cm.

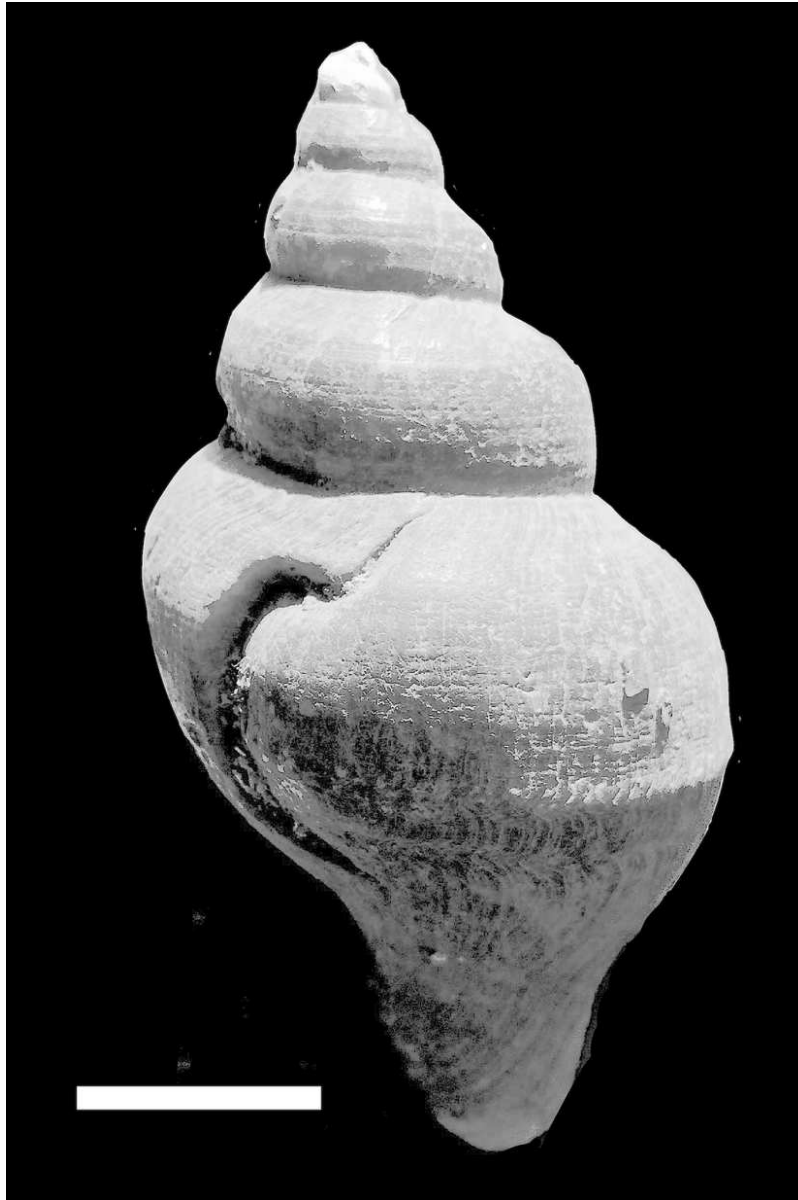
**Figure 2.** A conceptual plot of number of survived predation scars ( $m$ ) against time ( $t$ ), showing possible fates for three snails A, B and C of varying ages  $a_A$ ,  $a_B$  and  $a_C$  at time  $t = 0$ . Attacks are marked with X. Snails can survive periods without attacks (horizontal colored branches) or survive attacks (vertical colored branches). Death can come from successful attack (vertical black branches terminated with black bar) or from non-predatory causes (horizontal black branches terminated by black bar). At every point in the grid, there are two recent possibilities for having arriving there: either surviving from  $t-1$  with, or without, scarring. The exception is provided for points along  $m = 0$ , where only arrival without scarring is possible. Snail C survived the time period under question.

**Figure 3.** Shell age distribution and scars per shell from a simulated data set where  $\rho = 0.533$  and  $R = 0.79$ .

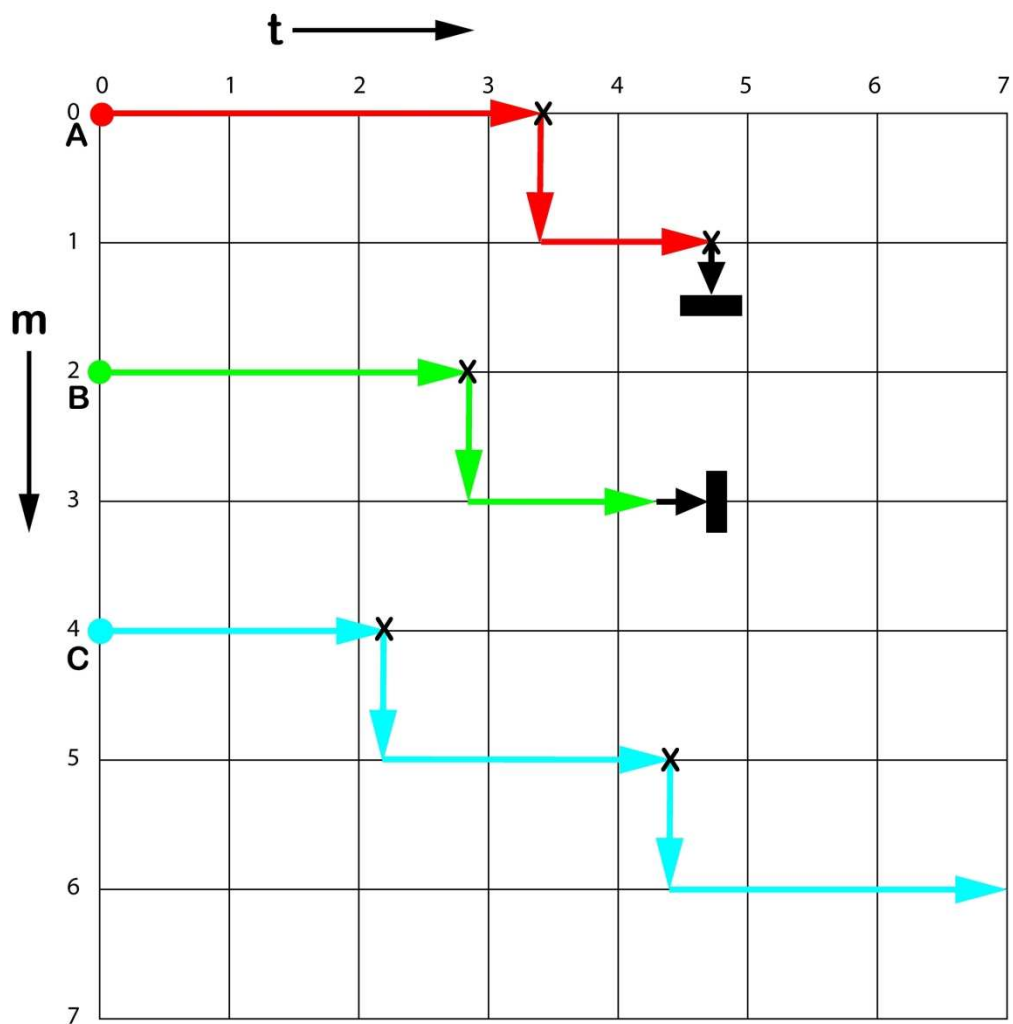
**Figure 4.** Results of inference on simulated data. 1 million data sets of 100 shells were simulated and the values of  $R$  and  $\rho$  inferred. The true values are marked by the dashed lines.

**Figure 5.** Example plot of inferred contour of  $\Omega \equiv R(1 - \rho)$  as a function of  $R$  and  $\rho$  from our simulated data set of 100 shells. Dashed lines give the 95% confidence intervals. The black circle shows values of  $R$  and  $\rho$  when  $d = 0$ , and the grey box indicates the possible ranges of  $R$  and  $\rho$  (including confidence intervals) when  $d$  is constant.

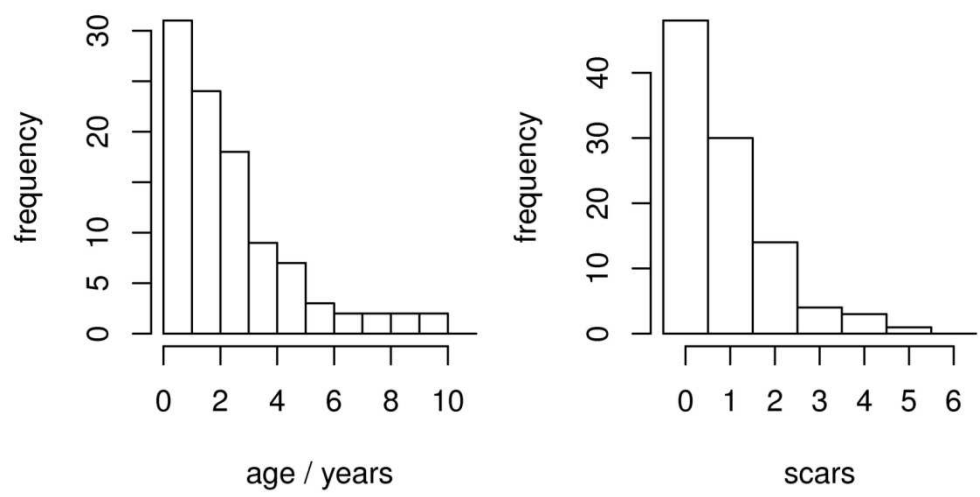




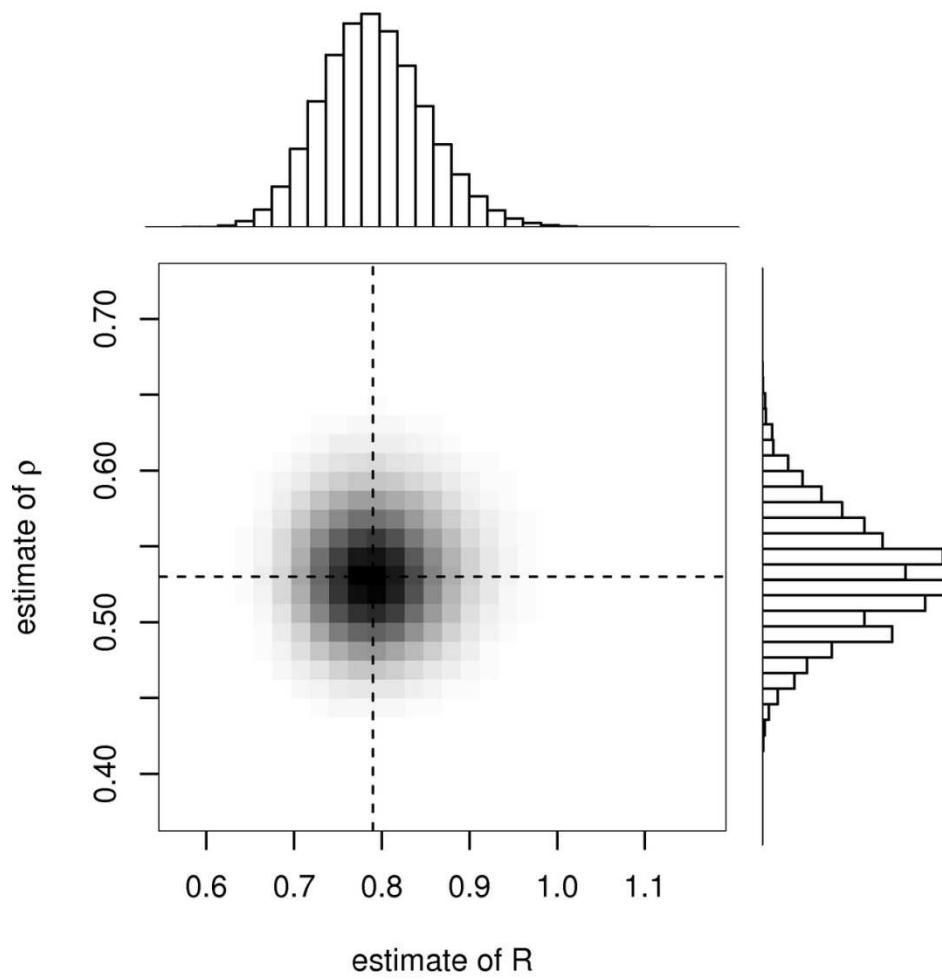
70x104mm (300 x 300 DPI)



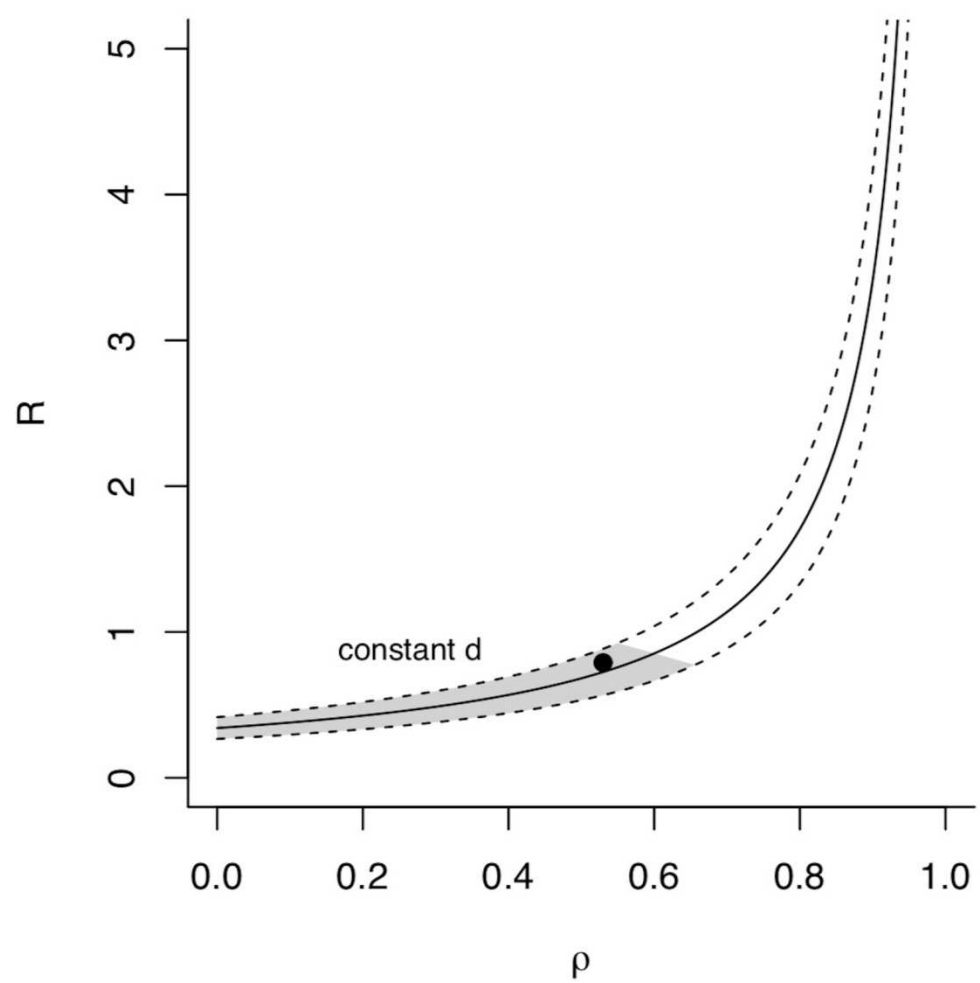
196x200mm (300 x 300 DPI)



141x78mm (300 x 300 DPI)



114x114mm (300 x 300 DPI)



69x69mm (600 x 600 DPI)