



Liu, Jiajia and Siew, W.H. and Soraghan, J.J. and Hu, Xiao and Peng, Xiaosheng and Morris, Euan A. (2018) A novel wavelet selection scheme for partial discharge signal detection under low SNR condition. CIGRE Science and Engineering. ISSN 1286-1146 (In Press) ,

This version is available at <https://strathprints.strath.ac.uk/66432/>

Strathprints is designed to allow users to access the research output of the University of Strathclyde. Unless otherwise explicitly stated on the manuscript, Copyright © and Moral Rights for the papers on this site are retained by the individual authors and/or other copyright owners. Please check the manuscript for details of any other licences that may have been applied. You may not engage in further distribution of the material for any profitmaking activities or any commercial gain. You may freely distribute both the url (<https://strathprints.strath.ac.uk/>) and the content of this paper for research or private study, educational, or not-for-profit purposes without prior permission or charge.

Any correspondence concerning this service should be sent to the Strathprints administrator: strathprints@strath.ac.uk

The Strathprints institutional repository (<https://strathprints.strath.ac.uk>) is a digital archive of University of Strathclyde research outputs. It has been developed to disseminate open access research outputs, expose data about those outputs, and enable the management and persistent access to Strathclyde's intellectual output.

A Novel Wavelet Selection Scheme for Partial Discharge Signal Detection under Low SNR Condition

Jiajia Liu^{1*}, W.H. Siew¹, J.J. Soraghan¹, Xiao Hu², Xiaosheng Peng³, and Euan A. Morris¹

¹ Department of Electronics and Electrical Engineering, University of Strathclyde, Glasgow, G1 1XW, UK

² Department of Electrical Engineering, Guizhou University, Guiyang, 550025, China

³ School of Electrical and Electronic Engineering, Huazhong University of Science and Technology, Wuhan, 430074, China

*E-mail: jiajia.liu@strath.ac.uk

Abstract: Wavelet-based techniques have been widely used to extract partial discharge (PD) signals from noisy signals. Generally, the procedure consists of 3 steps: wavelet selection, decomposition scale determination, and noise estimation. Wavelet selection is the first and most important step for its successful application in PD denoising. However, despite many variants of techniques deployed, the success rate is not generally good especially when the signal to noise ratio is unity or less. This paper discusses a novel technique that addresses this issue. The technique is inspired by the concept of Shannon entropy and the associated information cost functions (ICF) in information theory. It is adaptive to the detected PD signals. The paper demonstrates that the proposed technique is effective when applied to PD signals obtained through laboratory experiments and on-site measurements. When this technique is applied to cable diagnostics, it should have the potential to extend the range of PD detection from cables.

Index Terms: Denoising, detection, partial discharge, wavelet selection, wavelet entropy

1. Introduction

Partial discharge (PD) measurement is an effective technique for the monitoring of electrical insulation. However, PD signals are normally contaminated by noise from the environment, which increases the difficulty of their detection. To effectively extract PD signal from noisy signals, various denoising techniques, such as adaptive filter [1], [2], and the wavelet-based technique [3]–[7], have been adopted to remove noise. The wavelet-based technique has been widely used in recent years since wavelet transform can simultaneously provide signal information both in time and frequency domains. This advantage is particularly useful for the processing of non-stationary signals, e.g., PD signals.

It is a desirable property that a denoising technique can maximize the elimination of the noise while minimizing the loss of the information-bearing signal of interest. In the case of wavelet-based denoising technique, a noisy signal is decomposed into multi-scale wavelet coefficients by a selected basis function. Those wavelet coefficients associated with noise are processed by an estimated threshold, and thus, the significant features of the signal of interest are retained. Reconstruction is then performed to build the denoised signal. Based on the processes of decomposition and reconstruction, wavelet-based denoising

is determined by three aspects: the choice of wavelet, decomposition scale, and noise or threshold estimation. The choice of a suitable wavelet basis function is the first, and most, significant step for the application of wavelet-based denoising as the wavelet can be translated and scaled to represent the signal of interest as effectively as possible. In practice, different denoised signals are obtained by using different wavelet basis functions [8]. This technique is also applied to the field of wavelet-based PD denoising. As such, the investigation of an appropriate wavelet basis function for wavelet-based PD denoising has been performed in [9], [10].

A wavelet selection scheme was introduced in [9] based on the correlation coefficient between a known PD signal and wavelet waveform. This scheme is termed correlation-based wavelet selection scheme (CBWSS). The optimal wavelet is desired to generate the highest wavelet coefficients in wavelet analysis of PD signals, and thus, the essence of PD signal of interest can be effectively preserved. Based on this, the wavelet that can maximize the correlation coefficient is selected as the most appropriate wavelet for PD denoising. This approach for best wavelet selection, however, has an inherent limitation, it requires prior knowledge of PD waveforms. The waveform of PD signals depends on: the type and location of PD sources, propagating medium and path, and the detecting circuit. The variability of PD waveforms impedes the application of CBWSS for online PD monitoring systems. Also, it is not a scale-dependent wavelet selection scheme. The denoised PD signal may not be as good as expected. The most significant drawback, however, is that the PD signal is normally corrupted by the noise in the environment, which can lead to the selected wavelet being a match of the noisy PD signal rather than the pure PD signal, especially when the signal to noise ratio (SNR) is very low. In an attempt to overcome the limitation mentioned above in CBWSS, a scale-dependent energy-based wavelet selection scheme (EBWSS) was presented in [10]. The wavelet that can maximize the energy ratio of approximation coefficients at each decomposition scale is selected as the best wavelet. It has been demonstrated to outperform CBWSS [10]. In EBWSS, two typical PD waveforms, damped exponential PD pulse (DEP) and damped oscillating PD pulse (DOP), were used to demonstrate the energy criterion for the optimal wavelet selection. With further exploration in details of EBWSS, it has been found that the criterion is not strictly true for DOP signals, particularly when the decomposition scale increases. The motivation of this paper is therefore to provide an automated and data-driven selection scheme for the best wavelet selection in the context of PD denoising.

In this paper, the new wavelet selection scheme is inspired by the concept of Shannon Entropy [11], and the associated information cost functions (ICF) in information theory [12]–[14]. An ICF can select the best wavelet to expand a signal in wavelet domain. Wavelet entropy, derived from Shannon Entropy, can measure the randomness of the wavelet coefficients at each decomposition scale. The smaller the wavelet entropy, the lower the randomness of the wavelet coefficients. As such, the new selection scheme is proposed with the combination of ICF and wavelet entropy, and termed wavelet entropy-based wavelet selection scheme (WEBWSS). Simulated PD signals, i.e., DEP and DOP, PD signals obtained through laboratory experiment using test samples with artificial defects and on-site PD measurements are used to demonstrate the performance of this novel wavelet selection scheme. Results show that it is a promising wavelet selection scheme to improve the effectiveness of PD denoising.

2. Wavelet-Based Technique

2.1 Wavelet Theory

Wavelet transform (WT) is an alternative approach to traditional methods, e.g. Fourier Transform, in signal processing. The major advantage of WT is that it can map a signal in the time-frequency plane. Due to this advantage, WT is a promising technique in the analysis of variations in signals or images with the requirements of both time and frequency information. WT can be interpreted as an expansion or decomposition of signals or images in terms of a wavelet that can be scaled in an auto-similar way [15]. The orthogonal property of the wavelet used for the expansion or decomposition is the essence in WT. Generally, WT is achieved through the application of continuous wavelet transform (CWT) or discrete wavelet transform (DWT). DWT is preferable due to its representation of signals or images through its DWT coefficients without redundancy and, thus, is using less computational time. In this paper, the wavelet-based technique referred to is the DWT.

In [15], the wavelet expansion of a signal x can be expressed as

$$x = \sum_i \sum_j C_{j,i} \cdot \psi_{j,i}, \quad (1)$$

where both i and j are integer, i is the time-delay index and j is the scale index. $\{\psi_{j,i}\}$ is the expansion set of wavelet basis functions, and $\{C_{j,i}\}$ is the set of expansion coefficients, or wavelet coefficients, which is called the discrete wavelet transform of x . The expansion in (1) is the inverse discrete wavelet transform (IDWT). The scheme of DWT for signal decomposition is depicted in Figure 1. A signal is convolved with the low- and high-pass filters and followed by a downsampling operation by 2. In signal processing terminology, the outputs of the low- and high-pass filters are termed approximation and detail coefficient respectively. The approximation coefficient is used as the input signal for next-scale decomposition. This decomposition is iterated until the predefined scale, J , reaches. It is important to note that the maximum decomposition scale J_{max} is defined as $\log_2(N)$, where N is the length of the input signal. The reconstruction of the input signal, i.e., inverse DWT (IDWT), is a reverse operation as shown in Figure 1. Instead of downsampling in DWT, upsampling is involved in IDWT. Figure 2 shows the processes of IDWT for signal reconstruction. To obtain perfect signal reconstruction, the low- and high-pass filters are designed as quadrature mirror filters (QMFs).

PLACE FIGURE 1 HERE

PLACE FIGURE 2 HERE

Equally, the implementation of DWT in signal decomposition also can be interpreted in the frequency domain. As shown in Figure 1, the DWT process is equivalent to filtering the signal by the filter pairs, the low-pass filter h and the high-pass filter g . Ideally, these filter pairs halve the frequency band with the increase of scale. Let f_s be the sampling frequency of the input signal, the frequency band, $G_1(w)$, of the output of the high-pass filter is $f_s/4 \sim f_s/2$, while the frequency band, $H_1(w)$, of the output of the low-pass filter is $0 \sim f_s/4$. For next scale, $H_1(w)$ is further split into $G_2(w)$ and $H_2(w)$, which are $f_s/8 \sim f_s/4$ and $0 \sim f_s/8$, respectively. The frequency band is iteratively halved in the subsequent decomposition in the same manner until the predefined scale reaches. For a J -scale DWT, the distribution of the corresponding frequency bands is shown in Figure 3. It can

be seen that the frequency band of low-pass filter is $0 \sim f_s/2^{J+1}$ and the frequency band of high-pass filters is $f_s/2^{J+1} \sim f_s/2$ for a full-scale decomposition.

PLACE FIGURE 3 HERE

2.2 Wavelet-based Denoising

The wavelet denoising theory is dependent on the fundamental idea that the energy of a signal is often concentrated in only a few coefficients while the energy of noise is widely spread among all the coefficients in the wavelet domain [9], [16], [17]. General procedures for the wavelet-based denoising of a signal are presented as follows:

- 1) Apply DWT to decompose the noisy signal s with a selected wavelet to a predefined scale J , and obtain approximation coefficients a_j at the final scale J and detail coefficients d_j at decomposition scale j , where $j = 1, 2, \dots, J$.
- 2) Estimate the threshold through a noise estimation technique and apply this threshold to detail coefficients, d_j , at decomposition scale j using hard or soft thresholding scheme.
- 3) Apply IDWT to the approximation coefficients a_j and the processed detail coefficients d'_j to reconstruct the denoised signal s' .

Based on the noise estimation technique proposed in [9], [18], the scale-dependent threshold used in this paper is estimated by

$$thr_j = \frac{MAD|d_j|}{0.6745} \sqrt{2 \log(n_j)}, \quad (2)$$

where $MAD|\cdot|$ is the median absolute deviation of the detail coefficients d_j at decomposition scale j , and n_j is the length of d_j . For the thresholding scheme, soft thresholding in [18] is used in this paper, the function is given by

$$d'_{j,i} = \begin{cases} \text{sgn}(d_{j,i})(|d_{j,i}| - thr_j) & \text{if } |d_{j,i}| > thr_j \\ 0 & \text{if } |d_{j,i}| \leq thr_j \end{cases} \quad (3)$$

where $i = 1, 2, \dots, n_j$.

2.3 Wavelet Entropy

The concept of wavelet entropy was derived from Shannon entropy and presented in [19]. Suppose $\{C_{j,i}\}$ are the wavelet coefficients obtained through a J -scale wavelet transform, in which j represents the decomposition scale and $j = 1, 2, \dots, J$, i denotes the i^{th} element in $C_{j,i}$ and $i = 1, 2, \dots, n_j$, n_j is the length of wavelet coefficients at scale j . The energy of wavelet coefficients at the decomposition scale j can be calculated by

$$E_j = \sum_i |C_{j,i}|^2. \quad (4)$$

The distribution of energy probability for wavelet coefficients at scale j can be derived by

$$p_i = \frac{|C_{j,i}|^2}{\sum_k |C_{j,i}|^2} = \frac{|C_{j,i}|^2}{E_j} \quad (5)$$

with $\sum_i p_i = 1$. Wavelet entropy $WE(j)$ is defined as follows [19]:

$$WE(j) = - \sum_i p_i \ln(p_i). \quad (6)$$

Similar to Shannon entropy, wavelet entropy is applied to measure the degree of disorder of wavelet coefficients or signify the randomness of wavelet coefficients. It is important to note that wavelet entropy is not an information cost function (ICF), since it requires the energy of wavelet coefficients to be normalized as shown in (5), and is thus not additive [13], [14]. Substituting (5) into (6) yields:

$$\begin{aligned} WE(j) &= \sum_i p_i \ln\left(\frac{1}{p_i}\right) \\ &= \sum_i \frac{|C_{j,i}|^2}{E_j} \ln \frac{E_j}{|C_{j,i}|^2} \\ &= \frac{1}{E_j} \left(\sum_i |C_{j,i}|^2 \ln E_j + \sum_i |C_{j,i}|^2 \ln \frac{1}{|C_{j,i}|^2} \right) \\ &= \ln E_j + \frac{1}{E_j} \overbrace{\left(\sum_i |C_{j,i}|^2 \ln \frac{1}{|C_{j,i}|^2} \right)}^l \\ &= \ln E_j + l/E_j. \end{aligned} \quad (7)$$

In (7), l is an ICF based on the definition in [13]. As such, wavelet entropy is a monotonic-increasing function of l , which means minimizing l over wavelet coefficients minimizes wavelet entropy.

3. Partial Discharge Signals

Two theoretical PD pulses, i.e., damped exponential PD pulse (DEP) and damped oscillating PD pulse (DOP), are simulated using their mathematical frames derived based on two different PD detecting circuits [4], [10]. In this paper, DEP and DOP are given by the formula in [10]:

$$s_1(t) = A(e^{-\alpha_1 t} - e^{-\alpha_2 t}), \quad (8)$$

$$s_2(t) = A(e^{-\alpha_1 t} \cos(w_d t - \varphi) - e^{-\alpha_2 t} \cos \varphi), \quad (9)$$

where $s_1(t)$ and $s_2(t)$ are the DEP and DOP respectively. The values of A , α_1 , α_2 , f_d , w_d and φ used in these two equations are listed in Table 1.

PLACE TABLE 1 HERE

The simulated sampling frequency f_s is set to 60MHz. Figure 4 shows these two simulated PD signals both in time and frequency domains. Generally, DOP signal shown in Figure 4 (c) and (d) is closer to a real high-frequency PD signal detected from electrical power equipment in practice [10].

To develop the new scheme for practical use, real PD signals were generated through an artificial defect of a 7mm × 7mm breach in the outer conductor created in a 1.5m 11 kV ethylene propylene rubber-insulated (EPR) cable sample [20]. PD signals were collected using a high frequency current transformer (HFCT). The specifications of the HFCT are listed in Table 2. Details regarding the experiment setup are depicted in Figure 5 [20].

PLACE FIGURE 4 HERE

PLACE TABLE 2 HERE

PLACE FIGURE 5 HERE

Experiments were performed at various voltage levels. The PD pulses measured at 9kV are used as the real PD signals to demonstrate the new wavelet selection scheme in this paper. One PD pulse, named s_3 , with 2048 sample points was selected and depicted in Figure 6.

PLACE FIGURE 6 HERE

4. Wavelet Selection Schemes (WSS)

4.1 Correlation-based Wavelet Selection Scheme

In signal processing, correlation is a measure of association between two signals, and most commonly used is the linear correlation coefficient. For two signals, x_i and y_i , $i = 1, 2, \dots, N$, the normalized correlation coefficient γ is given by [9]

$$\gamma = \frac{\sum_i (x_i - \bar{x})(y_i - \bar{y})}{\sqrt{\sum_i (x_i - \bar{x})^2} \cdot \sqrt{\sum_i (y_i - \bar{y})^2}}, \quad (10)$$

where \bar{x} is the mean of x_i and \bar{y} is the mean of y_i . The value of γ is in the range of -1 to 1. It takes on a value close to 1 indicating x_i and y_i are positively correlated, and a value close to -1 denoting they are negatively correlated. A value of γ near zero means x_i and y_i are uncorrelated.

For CBWSS [9], correlation is used as a measure of the similarity between a pure PD signal and a wavelet, and this similarity is referred to as their shapes. The more similar their shapes, the higher the correlation coefficient is. The wavelet that has the highest correlation coefficient with the shape of a PD signal is selected to maximize the wavelet coefficients through wavelet analysis.

The general process for the choice of appropriate wavelet using CBWSS is described as follows:

- a. Analyze the detected PD signal to generate a 'typical' PD pulse.
- b. Set up a wavelet library, consisting of the wavelets that have similar characteristics to the PD pulse.
- c. Normalize the PD pulse and each wavelet retrieved from the wavelet library.
- d. Calculate the correlation coefficient, γ , between the PD pulse and each wavelet.
- e. Select the wavelet that has the maximum correlation coefficient with the PD pulse, it will be applied for the following wavelet-based denoising.

As indicated in Section 1 the CBWSS approach is limited by noise and is scale-independent. Also, a heuristic method was introduced in [10] to obtain better correlation results. Resampling both the PD signal and wavelet function in time domain is applied to align their peaks as well as their first zero-crossing points after the peaks. This method is also adopted in this paper for comparisons of denoising results between EBWSS and WEBWSS methods.

4.2 Energy-based Wavelet Selection Scheme

EBWSS was proposed by Li [10], in which the wavelet that can maximize the energy ratio of the approximation coefficients is selected as the best wavelet for PD denoising. For a one-dimensional wavelet decomposition, the energy ratio of approximation a_j at scale j is defines as follows [10]:

$$E_a = \frac{\sum_i a_{j,i}^2}{\sum_i a_{j,i}^2 + \sum_j \sum_i d_{j,i}^2}, \quad (11)$$

where $i = 1, 2, \dots, n_i$, n_i is the length of approximation coefficients or detail coefficients at scale j , and d_j is the detail coefficients at scale j .

The idea of wavelet energy was introduced in EBWSS. For an orthogonal wavelet, energy preservation is one of the desirable properties of DWT [21]. The equation for energy preservation is given by

$$\|X\|^2 = \|a\|^2 + \|d\|^2, \quad (12)$$

where a and d are the approximation and detail coefficients of the DWT of a signal X . This property is also applied to PD signals using DWT decomposition. A PD signal s can be decomposed into J scales with $J + 1$ signals, i.e., $s_1, s_2, \dots, s_J, s_{J+1}$. Among these signals, s_1, s_2, \dots, s_J are detail coefficients from scale 1 to scale J , while s_{J+1} is the approximation coefficients at scale J . The energy of a decomposed signal s_k is given by

$$E_k = \sum_i s_k^2(i), \quad (13)$$

where $k = 1, 2, \dots, J + 1$, $i = 1, 2, \dots, n_i$, and n_i is the length of s_i . Then, s can be represented by a normalized energy vector $(e_1, e_2, \dots, e_J, e_{J+1})$, where e_k is defined as

$$e_k = \frac{E_k}{\|s\|^2} = \frac{E_k}{\sum_{k=1}^{k=J+1} E_k}. \quad (14)$$

It can be seen that the concept of energy ratio in EBWSS can be interpreted as a normalized energy vector. Figure 7 shows the DEP, DOP, and white Gaussian noise (WGN) used in [10] to explain the criterion of EBWSS for wavelet selection. Figure 7 (a) and (b) show the DEP signal and its normalized energy vector respectively. Equally, Figure 7 (c) and (d) show the DOP signal and its normalized energy vector. Figure 7 (e) and (f) show WGN and its normalized energy vector. Based on Figure 7 (b), (d) and (e), the approximations of the DEP and DOP signals cover the most energy of total coefficients while the details of WGN preserve the most energy of total coefficients [10].

PLACE FIGURE 7 HERE

The general process for the choice of an appropriate wavelet using EBWSS is presented as follows:

- a. Given a wavelet library $\{\psi_i: i = 1, 2, \dots, N\}$, select a wavelet from $\{\psi_i\}$, and perform a one-scale DWT decomposition of a noisy PD signal. Obtain its approximation coefficients $a_1^{(i)}$ and detail coefficients $d_1^{(i)}$.
- b. Calculate the energy ratio of approximation coefficients $E_{a_1^{(i)}}$ based on (11). If $E_{a_1^{(p)}}$ is the maximum of $E_{a_1^{(i)}}$, $1 \leq p \leq N$, select ψ_p as the optimal wavelet for the first scale.
- c. Apply ψ_p to obtain the approximation coefficients $a_1^{(p)}$ and $d_1^{(p)}$.
- d. $a_1^{(p)}$ is used as the input signal for next-scale DWT decomposition, and select the optimal wavelet based on the strategy used in steps a, b, and c.
- e. Iterate the steps above until the predefined decomposition scale J reaches. The optimal wavelet for each decomposition scale will be selected.

Results in [10] show that EBWSS outperforms CBWSS for the best wavelet selection. However, EBWSS

is not as robust as expected. It selects the wavelet that can maximize the energy ratio of approximation coefficients. It is not strictly true for DOP signals, particularly when the decomposition scale increases. It can be seen from the normalized vector of DOP in Figure 7 (d), the energy of PD signal with a 6-scale decomposition is preserved on the detail coefficients rather than approximation coefficients. When more scales are required, for example, 7 scales, the EBWSS is still trying to select the appropriate wavelet by maximizing the energy ratio of approximation coefficients.

The limitation of EBWSS can be interpreted in the frequency domain. Based on Parseval's theorem, the time and frequency domains are equivalent representations of the signal, and thus, they must have the same energy [22]. As mentioned in Section 2.1, the filter pairs of DWT iteratively halve the frequency bands of a signal with the increase of decomposition scales. The spectrum of DEP, DOP, and white Gaussian noise are illustrated in Figure 8 (a), (b), and (c) respectively. With a 6-scale decomposition, the filter pairs iteratively separate these signals into disjoint frequency bands, $G_1(w), G_2(w), \dots, G_6(w)$ and $H_6(w)$. From the spectral curve of DOP, it is clear that the magnitudes of frequency in $G_5(w)$ and $G_6(w)$ are larger than those at other frequency bands. It is in agreement with the normalized vector of DOP shown in Figure 8 (b). With further decomposition, the energy of the signal will be preserved in detail coefficients rather than approximation coefficients.

PLACE FIGURE 8 HERE

4.3 Wavelet Entropy-based Wavelet Selection Scheme

As mentioned in Section 2.3, wavelet entropy is not an ICF, but l in (7) is monotonically increased with the wavelet entropy. As such, the best wavelet also can be selected when the value of wavelet entropy is minimum. In [13], it was shown that wavelet entropy value is inversely proportional to the energy concentrated in the number of wavelet coefficients. It is also known that white noise, the noise source for PD corruption in this paper, has high degree of randomness or disorder, and thus, the entropy value can describe the random characters of noise [23]. Based on this, a smaller value of wavelet entropy indicates that the wavelet used for WT decomposition can preserve more energy of the original signal in fewer number of coefficients and contain less white noise in the wavelet coefficients and, consequently, the wavelet used is closer to the best wavelet as expected. A new criterion for the best wavelet selection is therefore proposed, i.e., a wavelet that can have minimum wavelet entropy of the approximation coefficients at each decomposition scale through WT decomposition will be selected for denoising of PD detection. The new method has several promising advantages: it is scale-dependent, automated, and data-driven.

The general process for the proposed novel wavelet selection scheme is illustrated in the flow chart in Figure 9.

PLACE FIGURE 9 HERE

Given a wavelet library $\{\psi_i: i = 1, 2, \dots, N\}$, one wavelet of which is selected for a one-level DWT decomposition of a noisy PD signal $s(n)$ each time. Next the wavelet entropy of the generated approximations is calculated based on (6) and (7). The wavelet ψ_p ($1 \leq p \leq N$) that minimize the wavelet entropy of approximations will be selected as the best wavelet. The selected ψ_p is then applied for the DWT decomposition of $s(n)$ for the first scale, obtaining approximation coefficients $a_1^{(p)}$ and detail coefficients

$d_1^{(p)}$. Finally, $a_1^{(p)}$ is used as the input signal for next scale DWT decomposition, using the strategy presented above. When the predefined decomposition scale J reaches, the best wavelet for each scale will be successfully selected.

5. Results and Analysis

Generally, parameters, e.g., magnitude error (ME), mean square error (MSE), signal to noise ratio (SNR), and cross correlation (XCORR) are adopted to evaluate the performance of a proposed denoising method or algorithm. ME, MSE, and XCORR are used in this paper to compare the denoising results of different wavelet selection schemes. XCORR is calculated based on (11), and ME, MSE are calculated by the equations as follows,

$$ME = \frac{m - m'}{m}, \quad (15)$$

$$MSE = \frac{\sum_{i=1}^N [s(i) - s'(i)]}{N}, \quad (16)$$

where m and m' are the magnitudes of $s(i)$ and $s'(i)$ respectively. $s(i)$ represents the original signal and $s'(i)$ denotes the denoised signal. N is the length of signals. Better denoised results can be obtained with lower ME, MSE, and higher XCORR.

In this paper, PD signals are corrupted by white noise, and then, various wavelet selection schemes are used to remove the noise and evaluated by the parameters mentioned above. As mentioned in Section 4.2, EBWSS is not strictly true when the decomposition scale increases over 6. To highlight the limitations of EBWSS, the decomposition scale is set to 7 for the results analysis. Two simulated PD signals, s_1 and s_2 , and real PD signal, s_3 , as well as their noisy signals NS_1 , NS_2 and NS_3 with $SNR = -10$ are depicted in Figure 10. It is important to note that the original real PD signal shown in Figure 6 is corrupted by ambient noise during experiment. To mitigate the effect of this noise on the denoising results, it has been pre-processed using the method introduced in [10]. The smoothed real PD signal is depicted in Figure 10 (e).

PLACE FIGURE 10 HERE

Denoised s_1 , s_2 , and s_3 using CBWSS, EBWSS, and WEBWSS are shown in Figure 11 (a), (b), and (c) respectively. The related parameters used to evaluate their performance on PD detection are listed in Table 3. It can be seen from Figure 11 and Table 3 that WEBWSS has better performance than the others of wavelet-based denoising of PD detection. Simultaneously, it also verifies the conclusion presented in [10] that EBWSS outperforms CBWSS in PD denoising.

PLACE FIGURE 11 HERE

PLACE TABLE 3 HERE

Significant advancement of the proposed scheme in the denoising of single PD signals cannot be directly seen from Figure 11. However, two columns in Table 3, Improvement 1 and Improvement 2, have presented the improvements by WEBWSS. Improvement 1 is the improved ratio (%) of the use of WEBWSS to CBWSS and Improvement 2 is the improved ratio (%) of the use of WEBWSS to EBWSS. From magnitude error (ME), mean square error (MSE), and cross-correlation coefficients (XCORR), significant improvements can be seen

from these figures. The underlying meaning of the improvement of ME is PDs with small magnitude may be picked up by the use of WEBWSS as compared to the other two schemes. This enhanced capability of PD detection has been verified through the application of WEBWSS in on-site PD data, which will be delineated in Figure 15. Also, the improvement of MSE and XCORR indicates that less distortion of the denoised signals can be achieved through WEBWSS. It is good for the accuracy of PD location.

In the attempt to fully evaluate the performance of the new wavelet selection scheme, PD signals buried by various noise levels are investigated. SNR are set to -15, -10, -5, 0, and 5 for this investigation, representing different noise levels. The parameters used to evaluate the performance of three different schemes are plotted in Figure 12, Figure 13, and Figure 14 for S_1 , S_2 , and S_3 respectively. From the trends of ME, MSE, and XCORR for all denoised signals with the increase of SNR (the higher SNR, the lower noise level is), the new wavelet selection scheme is better than the existing schemes for wavelet-based denoising of PD detection under various noise levels, and the performance is particularly good when the SNR is low.

PLACE FIGURE 12 HERE

PLACE FIGURE 13 HERE

PLACE FIGURE 14 HERE

A PD signal is collected from one power substation in the UK with a sample rate of 100MS/s. The PD sensor is the same type of HFCT used in laboratory in Section 3. Figure 15 delineates the original on-site PD signal and its denoised versions by CBWSS, EBWSS, and WEBWSS, respectively. It can be seen that not only the PD pulses with magnitudes higher than the noise level has been extracted, but those ones with small magnitudes buried in the noise has been successfully extracted through the application of WEBWSS in Figure 15 (d). However, the number of the PD pulses with small magnitude that have been extracted by CBWSS and EBWSS, as shown in Figure 15 (b) and (c), is less than that by WEBWSS. The difference of the number of small-magnitude PD extraction among these three schemes has been highlighted in red line in Figure 15. The denoising result of on-site PD signal provides further support that the proposed wavelet selection scheme is more advantageous than the existing EBWSS and CBWSS for denoising of PD detection of electrical apparatus in practice.

PLACE FIGURE 15 HERE

6. Conclusion

A novel wavelet selection scheme based on the concept of information cost function and Shannon entropy has been proposed in this paper and the results showed that the technique improved the effectiveness of wavelet-based denoising of PD detection, especially for situations when the signal to noise ratio is unity or less. The technique is scale-dependent, automated, and data-driven and these properties enable it to be a promising technique in the context of PD detection. Based on the denoised results obtained from both simulated and real PD signals, it shows better performance than the existing wavelet selection schemes, particularly when the SNR is low. Accordingly, it has the potential to extend the range of PD detection in cables through the application of this technique.

References

- [1] H. Borsi, "Digital location of partial discharges in HV cables," *IEEE Trans. Electr. Insul.*, vol. 27, no. 1, pp. 28–36, 1992.
- [2] M. S. Mashikian, F. Palmieri, R. Bansal, and R. B. Northrop, "Location of partial discharges in shielded cables in the presence of high noise," *IEEE Trans. Electr. Insul.*, vol. 27, no. 1, pp. 37–43, 1992.
- [3] I. Shim, J. J. Soraghan, and W. H. Siew, "Detection of PD Utilizing Digital Signal Processing Method. Part 3 : Open-Loop Noise," *Electr. Insul. Mag. IEEE*, vol. 17, pp. 6–13, 2001.
- [4] X. Ma, C. Zhou, and I. J. Kemp, "Interpretation of wavelet analysis and its application in partial discharge detection," *IEEE Trans. Dielectr. Electr. Insul.*, vol. 9, no. 3, pp. 446–457, 2002.
- [5] L. Satish and B. Nazneen, "Wavelet-based Denoising of Partial Discharge Signals Buried in Excessive Noise and Interference," *IEEE Trans. Dielectr. Electr. Insul.*, vol. 10, no. 2, pp. 354–367, 2003.
- [6] H. Zhang, T. R. Blackburn, B. T. Phung, and D. Sen, "A novel wavelet transform technique for on-line partial discharge measurements part 1: WT de-noising algorithm," *IEEE Trans. Dielectr. Electr. Insul.*, vol. 14, no. 1, pp. 3–14, 2007.
- [7] P. Ray, A. K. Maitra, and A. Basuray, "Extract Partial Discharge Signal using Wavelet for On-line Measurement," *Int. Conf. Commun. Signal Process.*, pp. 888–892, 2013.
- [8] Y. F. Sang, D. Wang, J. C. Wu, Q. P. Zhu, and L. Wang, "The relation between periods' identification and noises in hydrologic series data," *J. Hydrol.*, vol. 368, pp. 165–177, 2009.
- [9] X. Ma, C. Zhou, and I. J. Kemp, "Automated wavelet selection and thresholding for PD detection," *IEEE Electr. Insul. Mag.*, vol. 18, no. 2, pp. 37–47, 2002.
- [10] J. Li, T. Jiang, S. Grzybowski, and C. Cheng, "Scale dependent wavelet selection for de-noising of partial discharge detection," *IEEE Trans. Dielectr. Electr. Insul.*, vol. 17, no. 6, pp. 1705–1714, 2010.
- [11] C. E. Shannon, "A Mathematical Theory of Communication," *Mob. Comput. Commun. Rev.*, vol. 5, no. 1, 1948.
- [12] R. R. Coifman and M. V. Wickerhauser, "Entropy-based algorithms for best basis selection," *IEEE Trans. Inf. Theory*, vol. 38, no. 2, pp. 713–718, 1992.
- [13] M. V. Wickerhauser, *Adapted Wavelet Analysis from Theory to Software*, vol. 38, no. 1. IEEE Press, 1996.
- [14] H. Šikić and M. V. Wickerhauser, "Information cost functions," *Appl. Comput. Harmon. Anal.*, vol. 11, no. 2, pp. 147–166, 2001.
- [15] S. Alessio, *Digital Signal Processing and Spectral Analysis for Scientists: Concepts and Applications*. Springer, 2015.
- [16] A. O. Boudraa, J. C. Cexus, and Z. Saidi, "EMD-based Signal Noise Reduction," *Int. J. Signal Process*, pp. 33–37, 2004.
- [17] Y. Kopsinis and S. McLaughlin, "Development of EMD-Based Denoising Methods Inspired by Wavelet Thresholding," *Signal Process. IEEE Trans.*, vol. 57, no. 4, pp. 1351–1362, 2009.
- [18] D. L. Donoho and I. M. Johnstone, "Ideal spatial adaptation by wavelet shrinkage," *Biometrika*, vol. 81, no. 3, pp. 425–455, 1994.
- [19] Y. Zhuang and J. S. Baras, "Existence and Construction of Optimal Wavelet Basis for Signal Representation," *IEEE Trans. Signal Process.*, 1994.
- [20] X. Hu, W. H. Siew, M. D. Judd, and X. Peng, "Transfer function characterization for HFCTs

- used in partial discharge detection,” *IEEE Trans. Dielectr. Electr. Insul.*, vol. 24, no. 2, pp. 1088–1096, 2017.
- [21] M. Misiti, Y. Misiti, G. Oppenheim, and J.-M. Poggi, *Wavelet Toolbox™ User’s Guide*. 2015.
- [22] S. W. Smith, *The Scientist and Engineer’s Guide to Digital Signal Processing*, Second Edi. California Technical Publishing, 1999.
- [23] Z. He, X. Chen, and G. Luo, “Wavelet Entropy Measure Definition and Its Application for Transmission Line Fault Detection and Identification; (Part I: Definition and Methodology),” 2006 Int. Conf. Power Syst. Technol., pp. 1–6, 2006.

Jiajia Liu was born in Jiangsu, China, in 1985. He received the BSc degree in electrical engineering from Shanghai Maritime University in 2007, the MSc degrees in electrical engineering from Shanghai Maritime University and the University of Southampton in 2009 and 2014 respectively. He is currently pursuing his PhD degree at the University of Strathclyde. His major research interest includes partial discharge monitoring, and transformer thermal modeling.

W. H. Siew is a Professor in the Department of Electronic & Electrical Engineering, University of Strathclyde, Glasgow, U.K. He is a Triple Alumnus of the University of Strathclyde with the B.Sc. (Hons) degree in electronic and electrical engineering; the Ph.D. degree in electronic and electrical engineering; and the M.B.A. degree. His areas of research interest include large systems electromagnetic compatibility, cable diagnostics, lightning protection, and wireless sensing systems. He was the Convener of the CIGRE WG C4.208 and of CIGRE WG C4.30. He is a member of the Advisory Group for CIGRE SC C4, which addresses System Technical Performance of Large Electric Systems. He is a Chartered Engineer and is an MIEEE and an MIEE.

John J. Soraghan (S’83–M’84–SM’96) received the B.Eng. (Hons.) and M.Eng.Sc. degrees from University College Dublin, Dublin, Ireland, in 1978 and 1983, respectively, and the Ph.D. degree from the University of Southampton, Southampton, U.K., in 1989, all in electronic engineering. His doctoral research focused on synthetic aperture radar processing on the distributed array processor. After graduating, he worked with the Electricity Supply Board in Ireland and with Westinghouse Electric Corporation in the United States. In 1986, he joined the Department of Electronic and Electrical Engineering, University of Strathclyde, Glasgow, U.K., as a Lecturer and became a Senior Lecturer in 1990, a Reader in 2000, and a Professor in signal processing in September 2003, within the Institute for Communications and Signal Processing (ICSP). In December 2005, he became the Head of the ICSP. He currently holds the Texas Instruments Chair in Signal Processing with the University of Strathclyde. He was a Manager of the Scottish Transputer Centre from 1988 to 1991 and a Manager of the DTI Parallel Signal Processing Centre from 1991 to 1995. His main research interests include signal processing theories, algorithms, and architectures with applications to remote sensing, telecommunications, biomedicine, and condition monitoring. Prof. Soraghan is a member of the Institution of Engineering and Technology.

Xiao Hu graduated from Xi’an Jiaotong University with a BSc degree and a MSc degree in electrical engineering in 2006 and 2009, respectively. He received his PhD degree from the University of Strathclyde in 2014 for research on FDTD modeling of partial discharge in high voltage cables. He is currently a lecturer in Guizhou University, China and his research includes partial discharge measurement and modeling.

Xiaosheng Peng received the B.Sc. And M.Sc. degrees from Huazhong University of Science and Technology, China in 2006 and 2009, respectively, and the Ph.D. degree in electrical engineering at Glasgow Caledonian University in 2012 funded by EPSRC. He has worked as a Post-Doctoral Researcher in Glasgow Caledonian University funded by EDF Energy. He is currently a lecturer in school of Electrical and Electronic Engineering of Huazhong University of Science and Technology. His research interests are partial discharge signal processing and condition monitoring of power plant. He is a member of IET.

Euan A. Morris was born in Glasgow, Scotland, in 1991. He received the MEng. degree in electrical and electronic engineering with business studies from the University of Strathclyde, Glasgow in 2014 and is currently undertaking the Ph.D. degree at the EPSRC Centre for Doctoral Training in Future Power Networks and Smart Grids, run by the University of Strathclyde, Glasgow and Imperial College London, London.

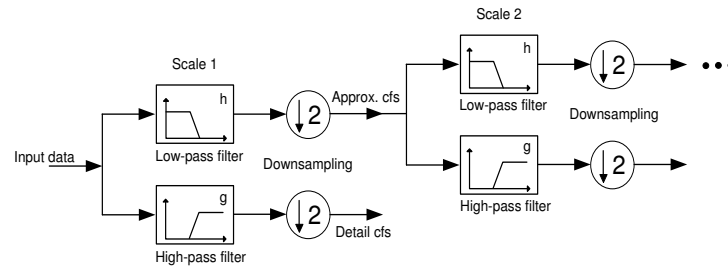


Figure 1. The implementation of DWT in signal decomposition

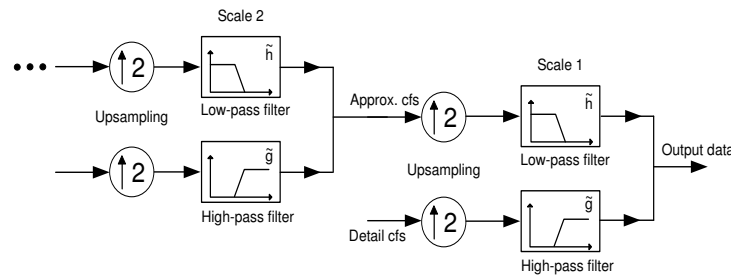


Figure 2. The implementation of IDWT in signal reconstruction

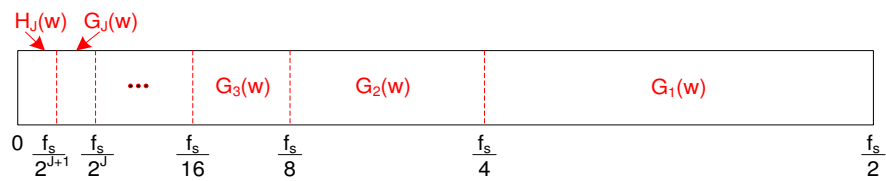


Figure 3. The frequency bands of filters at each decomposition scale

Table 1. Values of parameters used in (8) and (9) [10].

Parameters	Values
A	1
α_1	$10^6 s^{-1}$
α_2	$10^7 s^{-1}$
f_d	1MHz
w_d	$2\pi f_d$
φ	$\tan^{-1}(w_d/\alpha_2)$

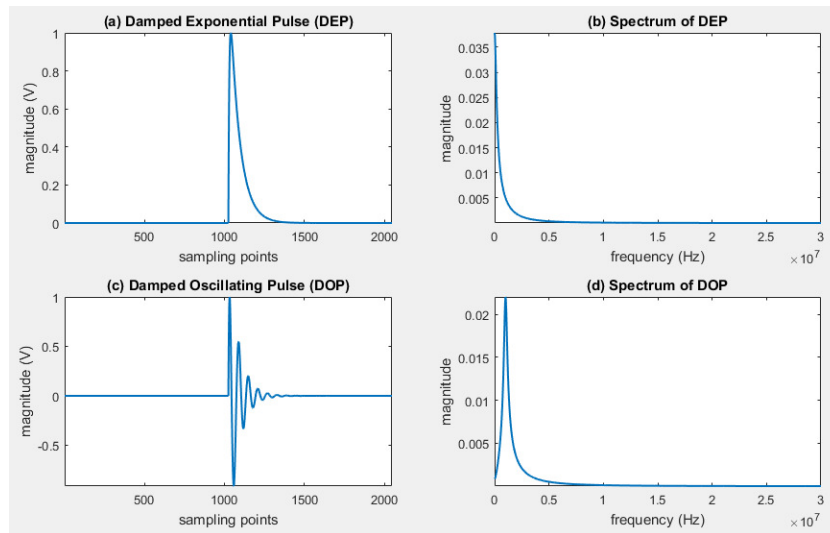


Figure 4. (a) and (b): DEP signals simulated in time and frequency domain respectively; (c) and (d): DOP signals simulated in time and frequency domain respectively.

Table 2. Specifications of the HFCT.

Parameters	HFCT
Sensitivity	5 V/A
-3 dB bandwidth	90 kHz – 20 MHz
Internal diameter	50 mm
External diameter	110 mm
Load resistance	50 Ω
Output conductor	BNC
Manufacturer	IPEC

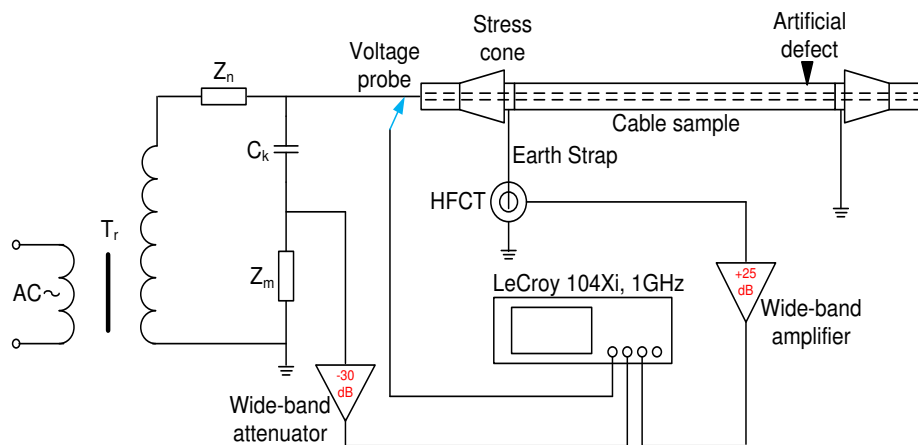


Figure 5. PD testing of a defective 11 kV EPR cable. HFCT was used to collect PD pulses (C_k and Z_m represent the coupling capacitor and measuring impedance respectively).

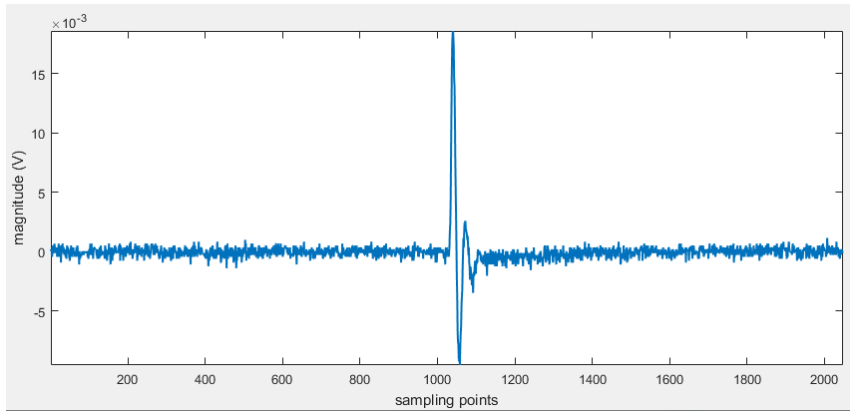


Figure 6. Real PD pulse, s_3 , detected from a defective EPR cable under 9kV AC voltage

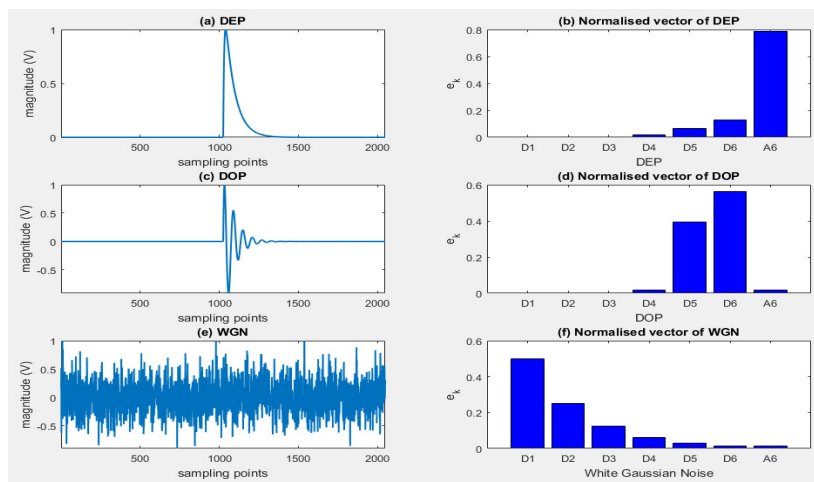


Figure 7. Representation of (a): DEP, (c): DOP, and (e): WGN by normalized vectors (b), (d) and (f) respectively.

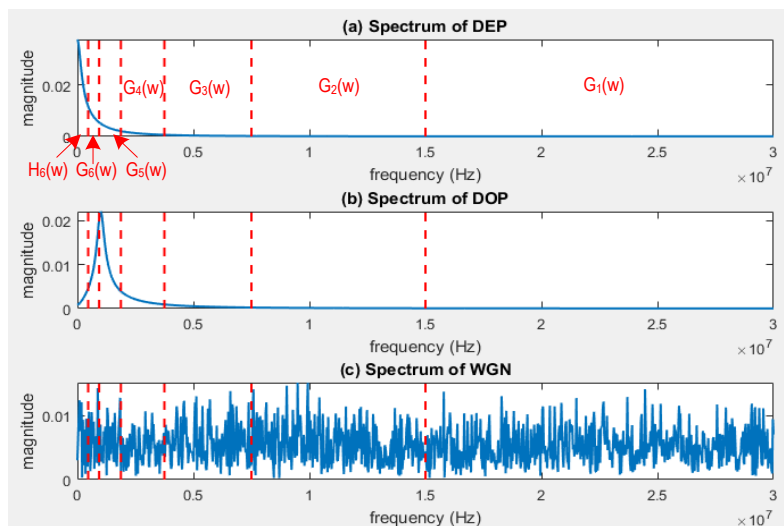


Figure 8. Spectrum of (a): DEP, (b): DOP, and (c): WGN.

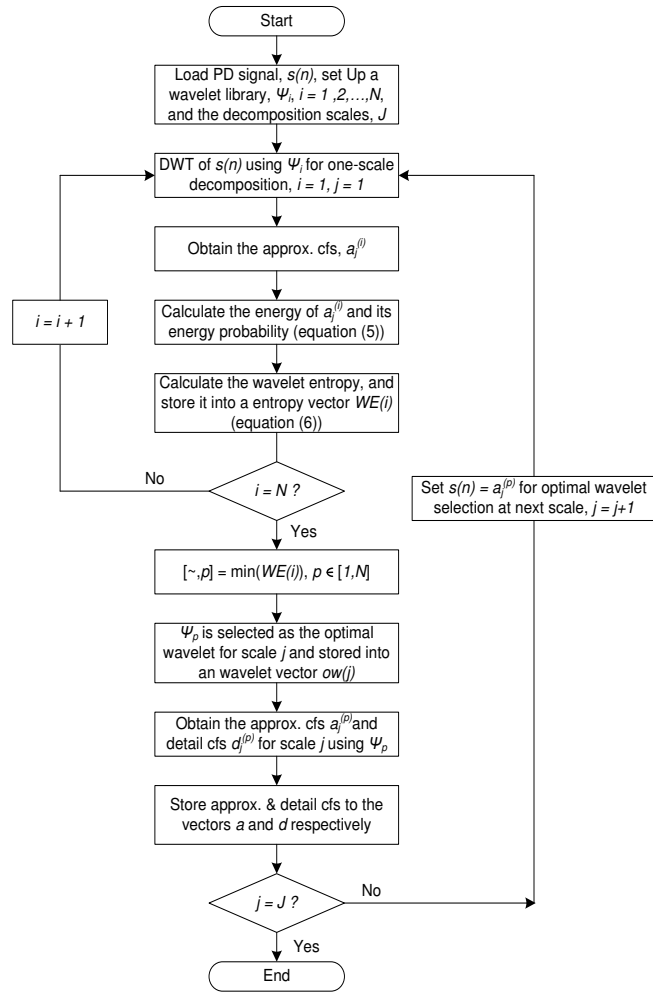


Figure 9. Flow chart of the general process of WEBWSS.

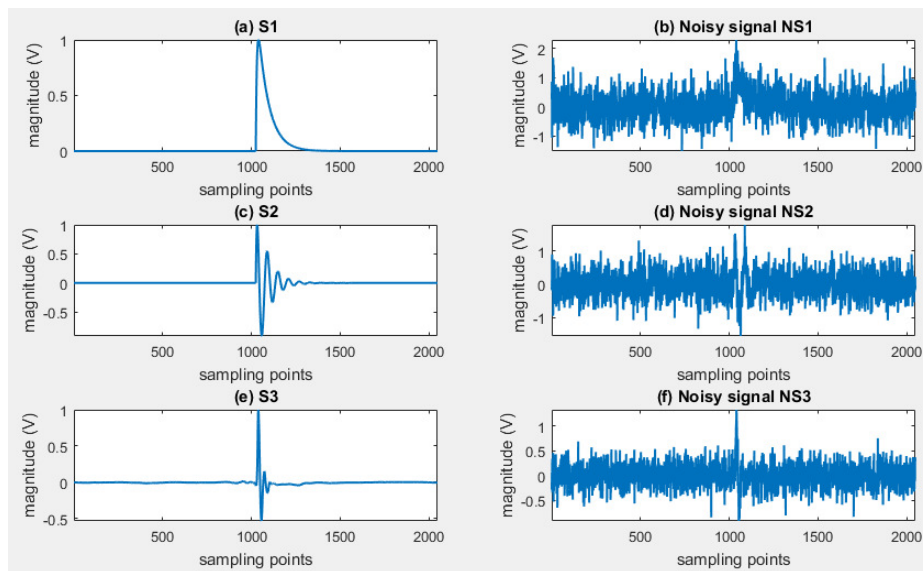


Figure 10. (a) and (b): s_1 and its noisy signal NS_1 with $SNR = -10$, (c) and (d): s_2 and its noisy signal NS_2 with $SNR = -10$, (e) and (f): s_3 and its noisy signal NS_3 with $SNR = -10$.

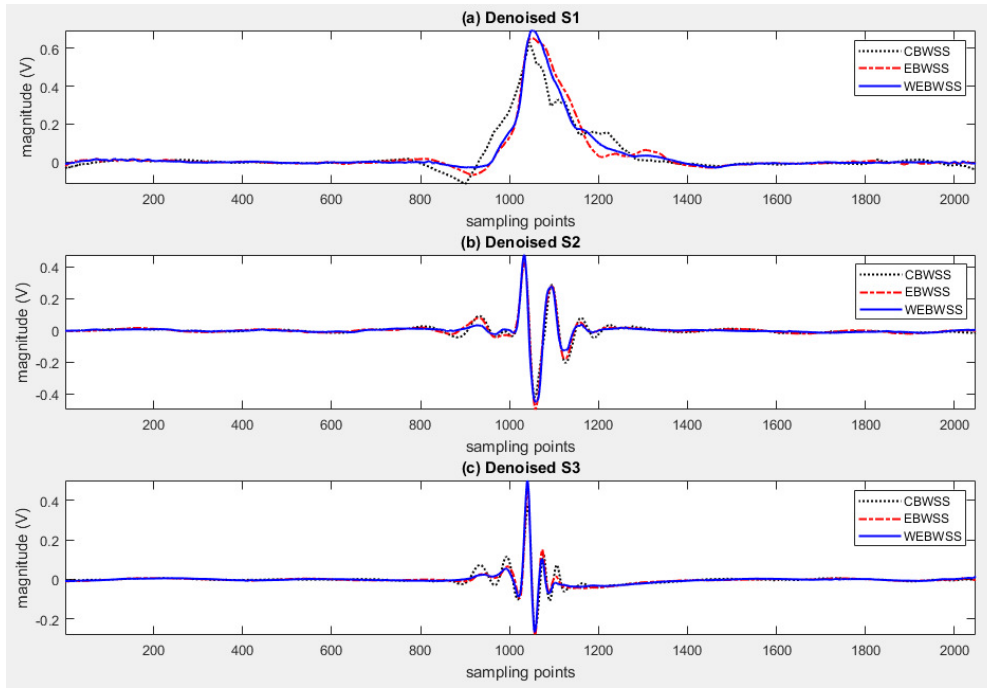


Figure 11. (a): Denoised s_1 using CBWSS, EBWSS and WEBWSS, (b): Denoised s_2 using CBWSS, EBWSS and WEBWSS, (c): Denoised s_3 using CBWSS, EBWSS and WEBWSS.

Table 3. Parameters used to evaluate the performance of wavelet selection schemes.

		CBWSS	EBWSS	WEBWSS	Improvement 1 (%)	Improvement 2 (%)
s_1	ME	0.3701	0.3457	0.3071	17	11.2
	MSE	0.0055	0.0028	0.0024	56.4	14.3
	XCORR	0.8689	0.9358	0.9495	8.5	1.4
s_2	ME	0.5686	0.5673	0.5238	7.9	7.7
	MSE	0.0054	0.0044	0.0041	24.1	6.8
	XCORR	0.8757	0.9182	0.9414	7.0	2.5
s_3	ME	0.5937	0.5457	0.4997	15.8	8.4
	MSE	0.00035	0.00037	0.00027	22.9	27
	XCORR	0.8501	0.9369	0.9502	10.5	1.4

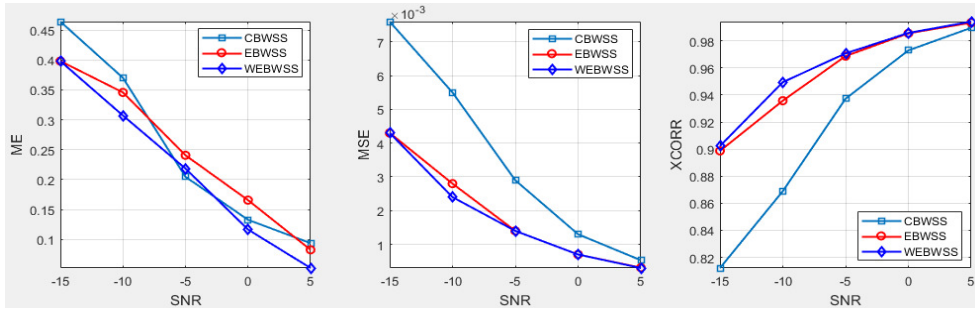


Figure 12. ME, MSE and XCORR between s_1 and denoised s_1 .

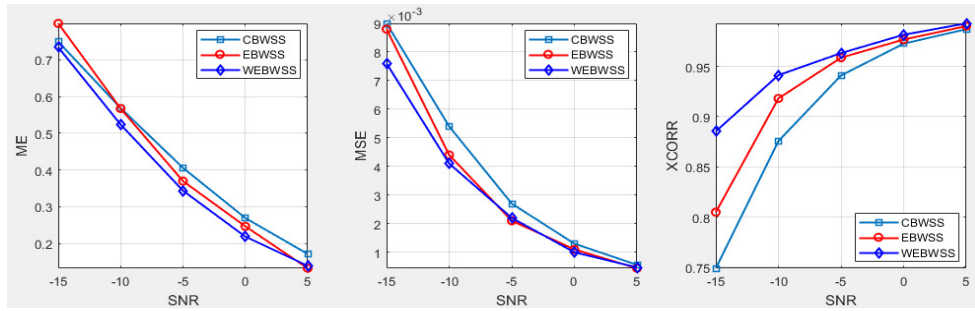


Figure 13. ME, MSE and XCORR between s_2 and denoised s_2 .

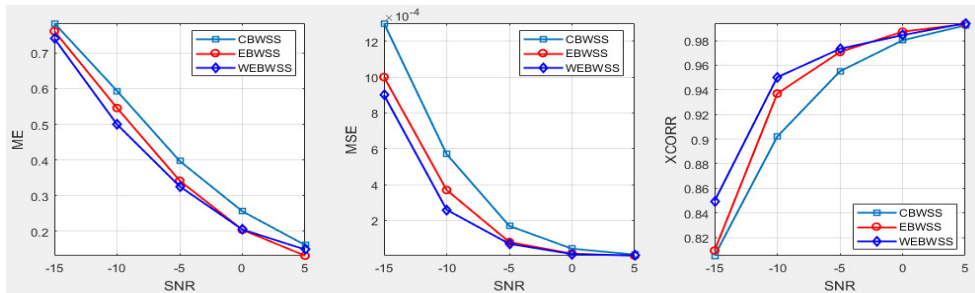


Figure 14. ME, MSE and XCORR between s_3 and denoised s_3 .

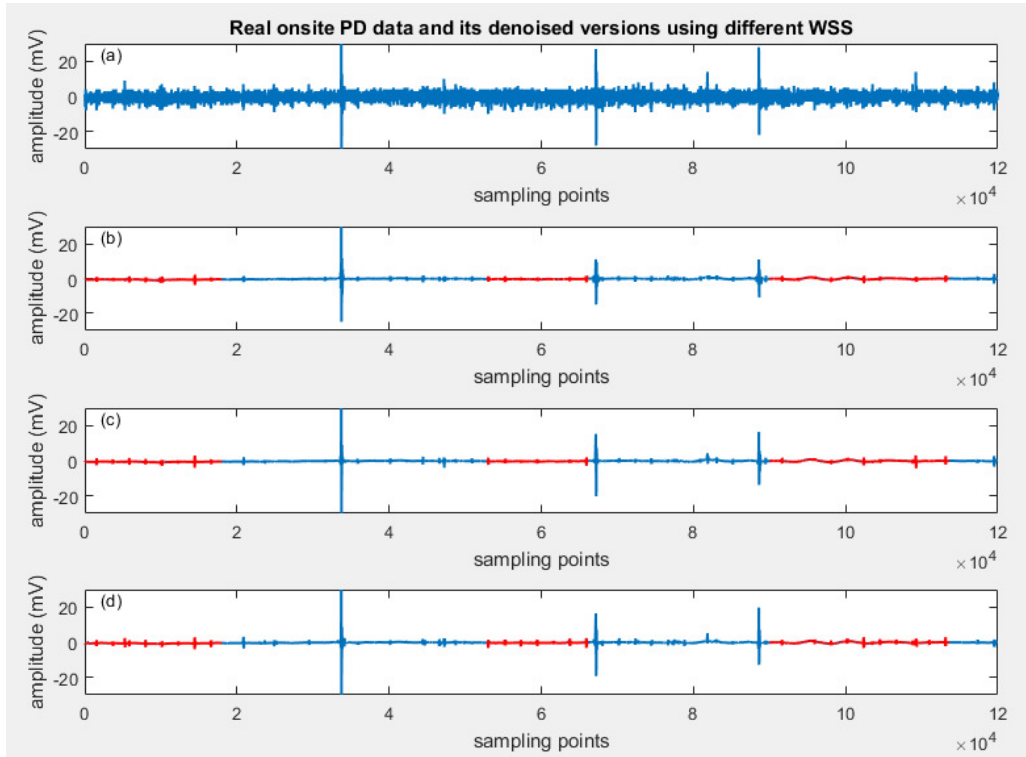


Figure 15. The denoising results of on-site PD signal: (a) On-site detected PD signal; (b), (c), (d) are the denoised PD signal by CBWSS, EBWSS, and WEBWSS, respectively.