



University of Dundee

Prognostic significance of infarct core pathology revealed by quantitative non-contrast in comparison with contrast cardiac magnetic resonance imaging in reperfused ST-elevation myocardial infarction survivors

Carrick, David; Haig, Caroline; Rauhalammi, Sam; Ahmed, Nadeem; Mordi, Ify; McEntegart, Margaret

Published in:
European Heart Journal

DOI:
[10.1093/eurheartj/ehv372](https://doi.org/10.1093/eurheartj/ehv372)

Publication date:
2016

Document Version
Publisher's PDF, also known as Version of record

[Link to publication in Discovery Research Portal](#)

Citation for published version (APA):

Carrick, D., Haig, C., Rauhalammi, S., Ahmed, N., Mordi, I., McEntegart, M., ... Berry, C. (2016). Prognostic significance of infarct core pathology revealed by quantitative non-contrast in comparison with contrast cardiac magnetic resonance imaging in reperfused ST-elevation myocardial infarction survivors. *European Heart Journal*, 37(13), 1044-1059. <https://doi.org/10.1093/eurheartj/ehv372>

General rights

Copyright and moral rights for the publications made accessible in Discovery Research Portal are retained by the authors and/or other copyright owners and it is a condition of accessing publications that users recognise and abide by the legal requirements associated with these rights.

- Users may download and print one copy of any publication from Discovery Research Portal for the purpose of private study or research.
- You may not further distribute the material or use it for any profit-making activity or commercial gain.
- You may freely distribute the URL identifying the publication in the public portal.

Take down policy

If you believe that this document breaches copyright please contact us providing details, and we will remove access to the work immediately and investigate your claim.

Prognostic significance of infarct core pathology revealed by quantitative non-contrast in comparison with contrast cardiac magnetic resonance imaging in reperfused ST-elevation myocardial infarction survivors

David Carrick^{1,2}, Caroline Haig³, Sam Rauhalammi¹, Nadeem Ahmed¹, Ify Mordi¹, Margaret McEntegart¹, Mark C. Petrie¹, Hany Eteiba¹, Stuart Hood¹, Stuart Watkins^{1,2}, Mitchell Lindsay¹, Ahmed Mahrous¹, Ian Ford³, Niko Tzemos^{1,2}, Naveed Sattar¹, Paul Welsh¹, Aleksandra Radjenovic¹, Keith G. Oldroyd¹, and Colin Berry^{1,2*}

¹BHF Glasgow Cardiovascular Research Centre, Institute of Cardiovascular and Medical Sciences, University of Glasgow, Glasgow G128TA, UK; ²West of Scotland Heart and Lung Centre, Golden Jubilee National Hospital, Clydebank, UK; and ³Robertson Centre for Biostatistics, University of Glasgow, Glasgow, UK

Received 3 January 2015; revised 6 July 2015; accepted 15 July 2015; online publish-ahead-of-print 10 August 2015

See page 1060 for the editorial comment on this article (doi:10.1093/eurheartj/ehv517)

Aims

To assess the prognostic significance of infarct core tissue characteristics using cardiac magnetic resonance (CMR) imaging in survivors of acute ST-elevation myocardial infarction (STEMI).

Methods and results

We performed an observational prospective single centre cohort study in 300 reperfused STEMI patients (mean \pm SD age 59 ± 12 years, 74% male) who underwent CMR 2 days and 6 months post-myocardial infarction ($n = 267$). Native T1 was measured in myocardial regions of interest ($n = 288$). Adverse remodelling was defined as an increase in left ventricular (LV) end-diastolic volume $\geq 20\%$ at 6 months. All-cause death or first heart failure hospitalization was a pre-specified outcome that was assessed during follow-up (median duration 845 days). One hundred and sixty (56%) patients had a hypo-intense infarct core disclosed by native T1. In multivariable regression, infarct core native T1 was inversely associated with adverse remodelling [odds ratio (95% confidence interval (CI))] per 10 ms reduction in native T1: 0.91 (0.82, 0.00); $P = 0.061$). Thirty (10.4%) of 288 patients died or experienced a heart failure event and 13 of these events occurred post-discharge. Native T1 values (ms) within the hypo-intense infarct core ($n = 160$ STEMI patients) were inversely associated with the risk of all-cause death or first hospitalization for heart failure post-discharge (for a 10 ms increase in native T1: hazard ratio 0.730, 95% CI 0.617, 0.863; $P < 0.001$) including after adjustment for left ventricular ejection fraction, infarct core T2 and myocardial haemorrhage. The prognostic results for microvascular obstruction were similar.

Conclusion

Infarct core native T1 represents a novel non-contrast CMR biomarker with potential for infarct characterization and prognostication in STEMI survivors. Confirmatory studies are warranted.

ClinicalTrials.gov identifier NCT02072850.

Keywords

ST-elevation myocardial infarction • Percutaneous coronary intervention • Cardiac magnetic resonance • Adverse remodelling

* Corresponding author: Tel: +44 1413301671; Email: colin.berry@glasgow.ac.uk

© The Author 2015. Published by Oxford University Press on behalf of the European Society of Cardiology.

This is an Open Access article distributed under the terms of the Creative Commons Attribution License (<http://creativecommons.org/licenses/by/4.0/>), which permits unrestricted reuse, distribution, and reproduction in any medium, provided the original work is properly cited.

Clinical perspective

Contrast-enhanced cardiac magnetic resonance (CMR) imaging is the established approach for imaging infarct pathology in survivors of ST-elevation myocardial infarction (STEMI). The pathophysiological and prognostic importance of infarct pathology disclosed by non-contrast native T1 CMR mapping in acute STEMI patients is unknown. We performed a prospective single centre cohort study in 300 reperfused STEMI patients who underwent CMR 2 days and 6 months ($n = 267$) post-myocardial infarction and clinical follow-up (median duration 2.5 years). Infarct core pathology revealed by native T1 mapping was feasible [$n = 288$ (96%) with evaluable data] and had superior prognostic value compared with infarct core T2 and myocardial haemorrhage, and similar prognostic value compared with microvascular obstruction revealed by late gadolinium enhancement CMR. Infarct core native T1 is a novel non-contrast CMR biomarker with potential for infarct characterization and prognostication in STEMI survivors.

Introduction

Myocardial infarct size^{1,2} and microvascular obstruction^{3–5} revealed by contrast-enhanced cardiac magnetic resonance (CMR) reflect the efficacy of reperfusion therapy and are prognostically important findings in survivors of ST-elevation myocardial infarction (STEMI).

Human tissue has fundamental magnetic properties, including the longitudinal (spin-lattice) relaxation time (native T1 in milliseconds). Native T1 is influenced by water content, binding with macromolecules (water mobility), and cell content.^{6,7} Native T1 CMR does not involve an intravenous contrast agent. Tissue water content increases as a result of ischaemia and longer T1 times may represent a biomarker of localized myocardial injury.^{8–16}

The clinical significance of tissue changes within the infarct core in patients with acute reperfused STEMI has not been directly assessed. We hypothesized that baseline native T1 values would be (i) inversely associated with the severity of MI, including microvascular obstruction, (ii) independently associated with left ventricular (LV) remodelling, and (iii) independently associated with pre-defined health outcomes. Should these hypotheses be confirmed then infarct core native T1 mapping without an intravenous contrast agent might have potential as an alternative biomarker to microvascular obstruction revealed by contrast-enhanced CMR.

To investigate these hypotheses, we measured native T1 in myocardial regions of interest in STEMI patients undergoing serial CMR imaging 2 days and 6 months post-MI. We assessed the clinical associates of native T1 within the hypo-intense infarct core and subsequent LV remodelling and examined its association with all-cause death and first hospitalization for heart failure.

Methods

Study population and ST-elevation myocardial infarction management

We performed an observational prospective CMR cohort study in a single regional cardiac centre between 14 July 2011 and 22 November 2012. Three hundred and forty three STEMI patients provided written informed consent to undergo CMR 2 days and 6 months post-MI. Patients were eligible if they had an indication for primary percutaneous coronary intervention (PCI) or thrombolysis for acute STEMI due to a history of symptoms consistent with acute myocardial ischaemia and with supporting changes on the electrocardiogram (ECG) (i.e. ST-segment elevation or new left bundle-branch block).¹⁷ Exclusion criteria represented standard contra-indications to contrast CMR, including a pacemaker and estimated glomerular filtration rate

<30 mL/min/1.73 m². The study was approved by the National Research Ethics Service and all participants provided written informed consent. Acute STEMI management followed contemporary guidelines.^{17,18} Aspiration thrombectomy, direct stenting, anti-thrombotic drugs, and other therapies were administered according to clinical judgment (Supplementary material online, Methods). The ClinicalTrials.gov identifier is NCT02072850.

Cardiac magnetic resonance acquisition

Cardiac magnetic resonance was performed on a Siemens MAGNETOM Avanto (Erlangen, Germany) 1.5-Tesla scanner with a 12-element phased array cardiac surface coil.¹⁹ The imaging protocol included cine magnetic resonance imaging with steady-state free precession (SSFP), native T1 mapping,^{15,20} T2 mapping,^{21,22} T2*-mapping, and delayed-enhancement phase-sensitive inversion-recovery pulse sequences.²³ The scan acquisitions were spatially co-registered and also included different slice orientations to enhance diagnostic confidence. Cardiac magnetic resonance was also performed in 50 healthy volunteers of similar age and gender in order to obtain local reference values for myocardial native T1 (Supplementary material online). Patients and healthy volunteers underwent the same imaging protocol except that healthy volunteers <45 years did not receive gadolinium. The coefficients of variation for native T1 were also measured (Supplementary material online, Results).

Native T1 maps were acquired in three short-axial slices (basal, mid, and apical), using an optimized modified look-locker inversion recovery (MOLLI) T1-mapping investigational prototype sequence^{15,20} before contrast administration (Supplementary material online, Methods; work-in-progress 448, Siemens Healthcare). The MOLLI T1 cardiac-gated acquisition involved three inversion recovery prepared Look-Locker experiments combined within one protocol.¹⁵ The CMR parameters were: bandwidth ~1090 Hz/pixel, flip angle 35°, echo time (TE) 1.1 ms, T1 of first experiment 100 ms, TI increment 80 ms, matrix 192 × 124 pixels, spatial resolution 2.2 × 1.8 × 8.0 mm, slice thickness 8 mm, and scan time 17 heartbeats. The prototype pulse sequence did not involve motion correction.

T2 maps were acquired in contiguous short-axis slices covering the whole ventricle, using an investigational prototype T2-prepared TrueFisp sequence^{21,22} (Supplementary material online, Methods). Typical imaging parameters were: bandwidth ~947 Hz/pixel, flip angle 70°, T2 preparations: 0, 24, and 55 ms, respectively, matrix 160 × 105 pixels, spatial resolution 2.6 × 2.1 × 8.0 mm, and slice thickness 8 mm.

T2*-maps were obtained using an investigational prototype T2* map sequence acquired in three short-axis slices (basal, mid, and apical). Typical imaging parameters were: bandwidth ~814 (8 ×) Hz/pixel; flip angle 18°; matrix 256 × 115; spatial resolution 2.6 × 1.6 × 10 mm; slice thickness 8 mm.

Early gadolinium enhancement (EGE) imaging was acquired 1, 3, 5, and 7 min post-contrast injection using a TrueFISP readout and fixed inversion time (TI) of 440 ms. Late gadolinium enhancement images covering the entire LV were acquired 10–15 min after IV injection of 0.15 mmol/kg of gadoterate meglumine (Gd^{2+} -DOTA, Dotarem, Guebert S.A.) using segmented phase-sensitive inversion recovery turbo fast low-angle shot sequence.²³ Typical imaging parameters were: matrix = 192×256 , flip angle = 25° , TE = 3.36 ms, bandwidth = 130 Hz/pixel, echo spacing = 8.7 ms, and trigger pulse = 2. The voxel size was $1.8 \times 1.3 \times 8 \text{ mm}^3$. Inversion times were individually adjusted to optimize nulling of apparently normal myocardium (typical values, 200–300 ms).

Cardiac magnetic resonance analyses

The images were analysed on a Siemens work-station by observers with at least 3 years CMR experience (N.A., D.C., I.M., and S.R.). All of the images were reviewed by experienced CMR cardiologists (C.B. and N.T.). Left ventricular dimensions, volumes, and ejection fraction were quantified using computer-assisted planimetry (syngo MR[®], Siemens Healthcare, Erlangen, Germany). The late gadolinium enhancement images were analysed for infarct size and microvascular obstruction by observers (N.A. and I.M.) who were blinded to all of the other data. In healthy volunteers, the absence of late gadolinium enhancement was determined qualitatively by visual assessment.

Native T1 mapping: standardized measurements in myocardial regions of interest

Native T1 mapping is a CMR method providing a parametric colour-encoded anatomical map in which the T1 value is encoded in each pixel²⁴ (Figure 1). The native T1 map analyses were informed by contemporary CMR guidelines.²⁴ Left ventricular contours were delineated with computer-assisted planimetry on the raw T1 image and copied onto the colour-encoded spatially co-registered map. Apical segments were not included because of partial volume effects. Particular care was taken to delineate regions of interest with adequate margins of separation from tissue interfaces prone to partial volume averaging such as between myocardium and blood.^{19,24,25} Each T1 map image was assessed for the presence of artefacts relating to susceptibility effects, or cardio-respiratory motion. Each colour map was evaluated against the original images. When artefacts occurred the affected segments were not included in the analysis.

In STEMI patients, myocardial T1 values were segmented spatially and regions of interest were defined as (i) remote myocardium, (ii) injured myocardium, and (iii) infarct core. The regions of interest were planimeted to include the entire area of interest with distinct margins of separation from tissue interfaces to avoid partial volume averaging. The remote myocardium region of interest was defined as myocardium 180° from the affected zone with no visible evidence of infarction, oedema, or wall motion abnormalities (assessed by inspecting corresponding contrast-enhanced T1-weighted, T2-weighted, and cine images, respectively). The infarct zone region of interest was defined as myocardium with pixel values (T1 or T2) >2 SD from remote myocardium on T2-weighted CMR.^{21,22} The hypo-intense infarct core was defined as an area in the centre of the infarct territory having a mean T1 value of at least 2 standard deviations (SDs) below the T1 value of the periphery of the area at risk.^{21,22} The assessment of T1 maps and adjudication (present/absent) of a hypo-intense core was performed independently by D.C.

In healthy volunteers, the mid-ventricular T1 colour-encoded map was segmented into six equal segments, using the anterior right ventricular-LV insertion point as the reference point.²⁶ T1 was measured in each of these segments, and regions of interest were planimeted distinct and separate from blood-pool and tissue interfaces. These

segmental values were also averaged to provide one value per subject. Results are presented as average values for segments and slices.

Infarct definition and size

The presence of acute infarction was established based on abnormalities in cine wall motion, rest first-pass myocardial perfusion, and delayed-enhancement imaging in two imaging planes. In addition, supporting changes on the ECG and coronary angiogram were also required. Acute infarction was considered present only if late gadolinium enhancement was confirmed on both the axial and long-axis acquisitions. The myocardial mass of late gadolinium (grams) was quantified using computer-assisted planimetry and the territory of infarction was delineated using a signal-intensity threshold of >5 SDs above a remote reference region and expressed as a percentage of total LV mass.²⁷ Infarct regions with evidence of microvascular obstruction were included within the infarct area and the extent of microvascular LV ventricular mass was also measured. The measurements of infarct size were performed by I.M. and N.A.

Microvascular obstruction

Microvascular obstruction was defined as a dark zone on EGE imaging 1, 3, 5, and 7 min post-contrast injection that remained present within an area of LGE at 15 min. Identification of microvascular obstruction was performed independently by I.M. and N.A.

Area-at-risk

Area-at-risk was defined as LV myocardium with pixel values (T2) >2 SDs from remote myocardium.^{4,21,22,28–30} In order to assess the area-at-risk, the epi- and endocardial contours on the last corresponding T2-weighted raw image with an echo time of 55 ms were planimeted.²¹ Contours were then copied to the computed T2 map and corrected when necessary by consulting the SSFP cine images.

Myocardial salvage

Myocardial salvage was calculated by subtraction of per cent infarct size from per cent area at risk.^{4,30,31} The myocardial salvage index was calculated by dividing the myocardial salvage area by the initial area at risk.

Adverse remodelling

Adverse remodelling was pre-defined as an increase in LV end-diastolic volume $\geq 20\%$ at 6 months from baseline.³

Myocardial haemorrhage

On the T2* maps, a region of reduced signal intensity within the infarcted area, with a T2* value of $<20 \text{ ms}$ ^{32–35} was considered to confirm the presence of myocardial haemorrhage.

Electrocardiogram

A 12-lead ECG was obtained before coronary reperfusion and 60 min afterwards. The extent of ST-segment resolution on the ECG assessed 60 min after reperfusion compared with the baseline ECG before reperfusion¹⁷ was expressed as complete ($\geq 70\%$), incomplete (30% to $<70\%$), or none ($\leq 30\%$).

Laboratory analyses

The acquisition of the ECGs and blood samples for biochemical and hematologic analyses are described in Supplementary material online, Methods.

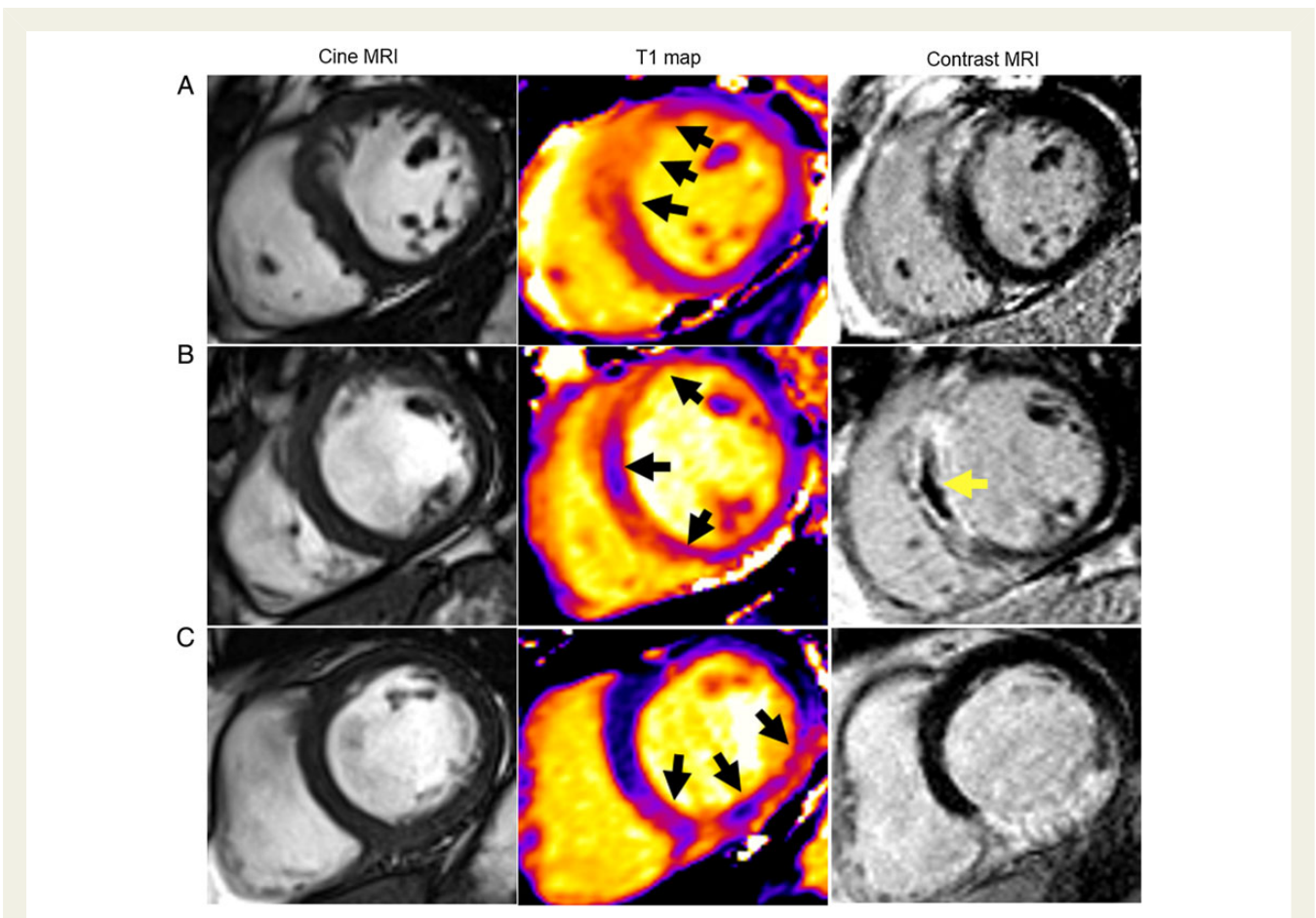


Figure 1 Three patients with acute ST-elevation myocardial infarction treated by primary PCI and with the same anti-thrombotic therapies, including aspirin, clopidogrel, heparin, and intravenous tirofiban. Each patient had normal thrombolysis in myocardial infarction Grade 3 flow at the end of PCI. Cardiac magnetic resonance imaging was performed for each patient 2 days later. (A) Patient with no T1 hypo-intense infarct core and no microvascular obstruction. Native T1 within the injury zone (*middle*) measured 1211 ms. Acute infarct size revealed by late gadolinium enhancement (*right*) was 22.2%. The left ventricular ejection fraction and left ventricular end-diastolic volume were 55.2% and 143.1 mL, respectively. Analysis of the repeat magnetic resonance imaging scan after 6 months follow-up indicated that the final infarct size was 15.6% of left ventricular mass and the left ventricular end-diastolic volume had reduced to 103.0 mL. This patient had an uncomplicated clinical course. (B) Patient with both T1 hypo-intense infarct core and microvascular obstruction. T1 mapping (*middle*) revealed a hypo-intense region within the infarct core, corresponding to the area of microvascular obstruction on contrast-enhanced magnetic resonance imaging (*right*). Native T1 within the infarct core measured 1036 ms, which was substantially lower than the T1 value measured at the periphery of the infarct zone (1193 ms). Acute infarct size revealed by late gadolinium enhancement (*right*) was 33.0%. Microvascular obstruction depicted as the central dark zone within the infarct territory was 3.6% of left ventricular mass. The left ventricular ejection fraction and end-diastolic volume were 45.8% and 199.3 mL, respectively. The final infarct size at 6 months was 22.6% of left ventricular mass and the left ventricular end-diastolic volume had increased to 221.8 mL. This patient was re-hospitalized for new onset heart failure during follow-up.

Pre-specified health outcomes

We pre-specified adverse health outcomes that are pathophysiologically linked with STEMI. The primary composite outcome was (i) all-cause death or first heart failure hospitalization (Supplementary material online, Methods). Other health outcomes included major adverse cardiac events (MACEs) defined as cardiac death, non-fatal MI, or hospitalization for heart failure.

Research staff screened for events from enrolment by checking the medical records and by contacting patients and their primary and secondary care physicians, as appropriate with no loss to follow-up (Figure 2). Each serious adverse event (SAE) was reviewed by a cardiologist who was independent of the research team and blinded to all of the clinical and CMR data. The SAEs were defined according to standard

guidelines^{36,37} (Supplementary material online, Methods) and categorized as having occurred either during the index admission or post-discharge. All study participants were followed up for a minimum of 18 months after discharge. The median duration of follow-up was of 845 days [post-discharge censor duration (range) 598–1098 days].

Statistical analyses

The sample size calculation is described in Supplementary material online, Methods. We estimated that at least 30 MACE events would occur based on a conservative estimate of the event rate (10–12%) at 18 months.

Categorical variables are expressed as number and percentage of patients. Most continuous variables followed a normal distribution and are

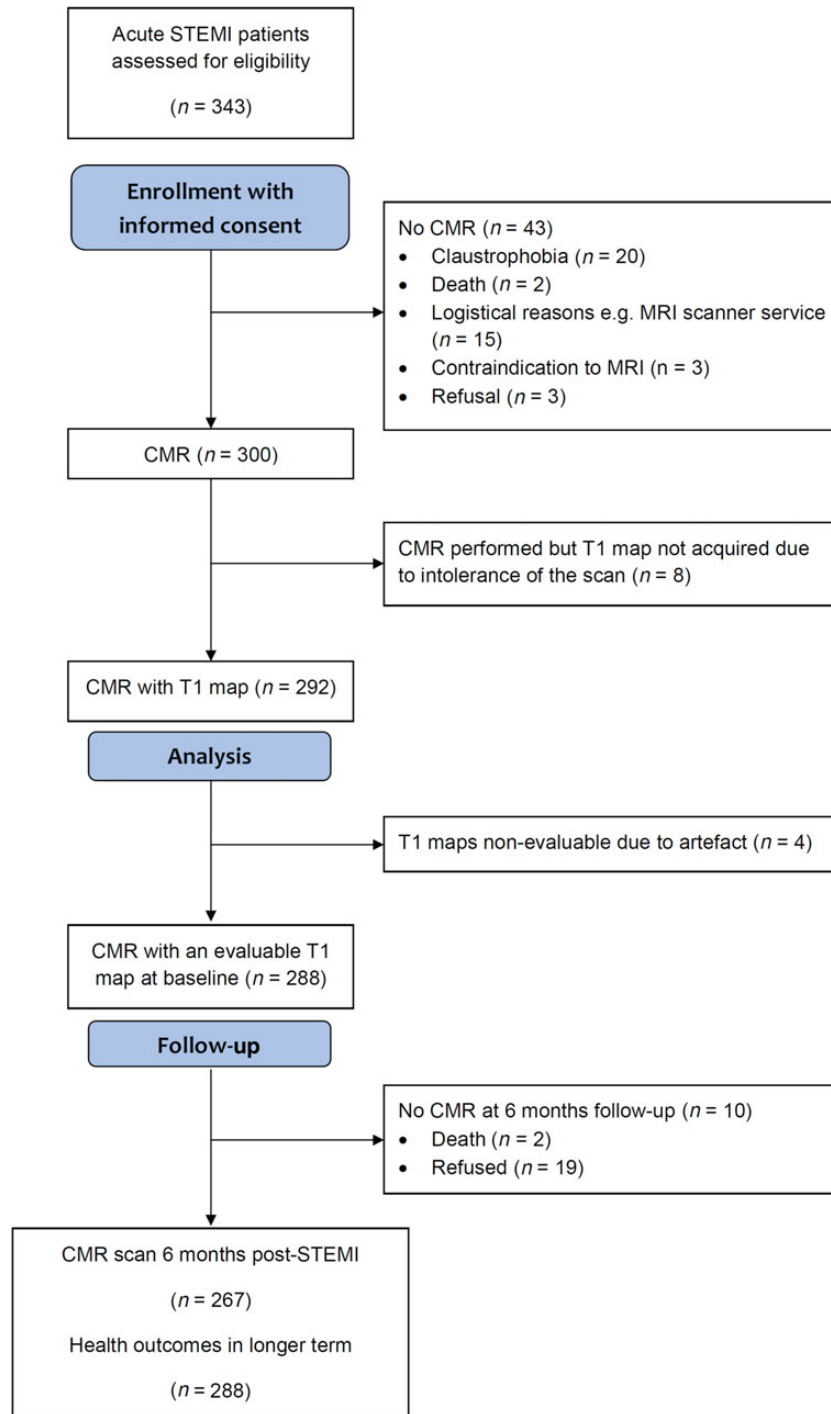


Figure 2 Flow diagram of the cohort study.

therefore presented as means together with SD. Those variables that did not follow a normal distribution are presented as medians with interquartile range. Differences in continuous variables between groups were assessed by the Student's *t*-test or analysis of variance (ANOVA) for continuous data with normal distribution, otherwise the non-parametric Wilcoxon rank sum test or Kruskal–Wallis test. Differences in categorical variables between groups were assessed using a χ^2 test or Fisher's test, as appropriate. Correlation analyses were Pearson or

Spearman tests, as indicated. Random effects models were used to compute inter- and intra-rater reliability measures [intra-class correlation coefficient (ICC)] for the reliability of infarct core native T1 values measured independently by 2 observers in 12 randomly selected patients from the cohort.

Univariable and multivariable linear regression methods to identify associates of T1 values for (i) remote myocardium, (ii) injured myocardium within the area at risk, (iii) infarct core in all patients, and (iv) in

Table 1 Clinical and angiographic characteristics of 288 ST-elevation myocardial infarction patients who had cardiac magnetic resonance with evaluable maps for myocardial native T1 magnetization, including the subset of patients with an infarct core revealed by native T1 (all and categorized by tertiles of native T1)

Characteristics ^a	All patients (n = 288)	Patients with a native T1 infarct core (n = 160) (56%)	Patients with a native T1 infarct core grouped by tertile of infarct core zone native T1 (ms) at baseline			P-value
			T1 core ≤973 ms (n = 54) (33%)	974 <T1 core ≤1010 ms (n = 53) (33%)	T1 core >1010 ms (n = 53) (33%)	
Age (years)	59 (11)	59 (11)	59 (11)	57 (11)	61 (11)	0.238
Male sex, n (%)	211 (73)	123 (77)	46 (85)	37 (70)	40 (76)	0.144
BMI (kg/m ²)	29 (5)	29 (5)	29 (4)	29 (5)	28 (5)	0.674
Medical history						
Hypertension, n (%)	93 (32)	57 (36)	17 (32)	21 (40)	19 (36)	0.684
Current smoking, n (%)	177 (62)	100 (62)	32 (59)	34 (64)	34 (64)	0.858
Hypercholesterolaemia, n (%)	82 (28)	44 (28)	12 (22)	17 (32)	15 (28)	0.527
Diabetes mellitus, ^b n (%)	32 (11)	20 (12)	7 (13)	7 (13)	6 (11)	1.000
Previous angina, n (%)	34 (12)	21 (13)	8 (15)	4 (8)	9 (17)	0.304
Previous myocardial infarction, n (%)	23 (8)	15 (9)	5 (9)	3 (6)	7 (13)	0.415
Previous PCI, n (%)	16 (6)	14 (9)	4 (7)	3 (6)	7 (13)	0.414
Presenting characteristics						
Heart rate (bpm)	78 (17)	78 (16)	80 (16)	79 (16)	76 (17)	0.401
Systolic blood pressure (mmHg)	136 (24)	136 (22)	137 (24)	140 (23)	131 (19)	0.095
Diastolic blood pressure (mmHg)	79 (14)	80 (14)	82 (14)	83 (13)	76 (13)	0.010
Time from symptom onset to reperfusion (min)	174 (120, 311) ^a	188 (125, 388)	223 (145, 406)	163 (113, 313)	198 (128, 257)	0.268
Ventricular fibrillation ^c , n (%)	20 (7)	150 (94)	3 (6)	2 (4)	5 (9)	0.518
Heart failure, Killip class at presentation, n (%)						
I	205 (71%)	101 (63)	29 (54%)	38 (72%)	34 (64%)	0.059
II	64 (22%)	43 (27)	15 (28%)	14 (26%)	14 (26%)	
III/IV	19 (7)	16 (10)	10 (18)	1 (2)	5 (9)	
ECG						
ST segment elevation resolution post-PCI, n (%)						
Complete, ≥70%	129 (45)	55 (35)	15 (28)	21 (40)	19 (36)	0.715
Incomplete, 30% to <70%	115 (40)	74 (46)	27 (50)	23 (44)	24 (45)	
None, ≤30%	43 (15)	30 (19)	12 (22)	8 (15)	10 (19)	
Reperfusion strategy, n (%)						
Primary PCI	268 (93)	148 (92)	49 (91)	49 (92)	50 (94)	1.000
Rescue PCI (failed thrombolysis)	13 (4)	10 (6)	4 (7)	3 (6)	3 (6)	
Successful thrombolysis	7 (2)	2 (1)	1 (2)	1 (2)	0 (0)	

Continued

Table 1 Continued

Characteristics ^a	All patients (n = 288)	Patients with a native T1 infarct core (n = 160) (56%)	Patients with a native T1 infarct core grouped by tertile of infarct core zone native T1 (ms) at baseline			P-value
			T1 core ≤973 ms (n = 54) (33%)	974 <T1 core ≤1010 ms (n = 53) (33%)	T1 core >1010 ms (n = 53) (33%)	
Coronary angiography						
Number of diseased arteries, ^d n (%)						
1	156 (54)	89 (56)	156 (54)	156 (54)	156 (54)	0.436
2	89 (29)	44 (28)	90 (31)	90 (31)	90 (31)	
3	42 (15)	24 (15)	42 (15)	42 (15)	42 (15)	
LM	6 (2)	3 (2)	0 (0)	2 (4)	1 (2)	
Culprit artery, n (%)						
LAD	108 (38)	60 (38)	22 (41)	19 (36)	19 (36)	0.915
LCX	51 (18)	31 (19)	10 (18)	12 (23)	9 (17)	
RCA	129 (45)	69 (34)	22 (41)	22 (42)	25 (47)	
TIMI coronary flow grade pre-PCI, n (%)						
0/1	208 (72)	135 (84)	49 (91)	39 (74)	47 (89)	0.085
2	52 (18)	27 (13)	5 (9)	11 (21)	5 (9)	
3	28 (10)	4 (2)	0 (0)	3 (6)	1 (2)	
TIMI coronary flow grade post-PCI, n (%)						
0/1	3 (1)	2 (1)	0 (0)	1 (2)	1 (2)	0.959
2	13 (4)	8 (5)	3 (6)	3 (6)	2 (4)	
3	272 (94)	150 (94)	51 (94)	49 (92)	50 (94)	
Medical therapy						
ACE-I or ARB	285 (99)	159 (>99)	54 (100)	53 (100)	52 (98)	0.663
β-Blocker	278 (96)	158 (99)	53 (98)	52 (98)	53 (100)	1.000
Initial blood results on admission						
C-reactive protein, (mg/L), median (IQR), range	3.0 (2.0–7.0) 0–265.0	4.0 (2.0, 8.0) 1.0–265	3.5 (2.0–11.0) 1.0–125.0	3.0 (1.0–6.2) 1.0–92.0	4.0 (2.0–7.0) 1.0–265.0	0.696
Leucocyte cell count (× 10 ⁹ L)	12.4 (3.5)	12.8 (3.6)	12.9 (3.5)	13.3 (3.5)	12.3 (3.6)	0.310
Neutrophil count (× 10 ⁹ L)	9.6 (3.2)	10.1 (3.3)	10.0 (3.4)	10.6 (3.4)	9.6 (3.0)	0.244
Monocytes (× 10 ⁹ L)	0.4 (0.4)	0.9 (0.4)	1.0 (0.4)	0.9 (0.3)	0.9 (0.5)	0.485
NT-proBNP (pg/mL)	824 (350, 1642)	1103 (628, 1849)	1456 (702, 2455)	980 (565, 1637)	1021 (529, 1436)	0.354

Missing data: heart rate, n = 1; time from symptom onset to reperfusion, n = 20; ST-segment resolution, n = 1; CRP, n = 7; leucocyte count, n = 1. The patients are grouped according to tertile of T1 in hypo-intense core at baseline. ACE-I or ARB, angiotensin converting enzyme inhibitor or angiotensin receptor blocker; LAD, left anterior descending coronary artery; LCX, left circumflex coronary artery; LM, left main coronary artery; RCA, right coronary artery; TIMI, thrombolysis in myocardial infarction grade; PCI, percutaneous coronary intervention. Killip classification of heart failure after acute myocardial infarction: class I—no heart failure, class II—pulmonary rales or crepitations, a third heart sound, and elevated jugular venous pressure, class III—acute pulmonary oedema, and class IV—cardiogenic shock.

^aData are reported as mean (SD), median (IQR), or N (%) as appropriate. P-values have been obtained from a one-way ANOVA or Fisher test. Thrombolysis in myocardial infarction flow grades pre- and post-PCI were grouped 0/1 vs. 2/3 for this analysis.

^bSuccessfully electrically cardioverted ventricular fibrillation at presentation or during emergency PCI procedure.

^cDiabetes mellitus was defined as a history of diet-controlled or treated diabetes.

^dMulti-vessel coronary artery disease was defined according to the number of stenoses of at least 50% of the reference vessel diameter, by visual assessment and whether or not there was left main stem involvement. The blood results on admission and their changes during the first 2 days after admission are described in Supplementary material online, Table S1.

Table 2 Comparison of cardiac magnetic resonance findings at baseline in 288 ST-elevation myocardial infarction survivors and 6-month cardiac magnetic resonance findings in 278 ST-elevation myocardial infarction patients

Characteristics*	All patients	Patients with a native T1 infarct core	Patients with a native T1 infarct core grouped by tertile of infarct core zone native T1 (ms) at baseline			P-value
	All patients (n = 288)	Hypo-intense core (n = 160)	≤973 ms (n = 54)	974 <T1 core ≤1014 ms (n = 53)	>1014 ms (n = 53)	
CMR findings 2 days post-MI						
LV ejection fraction (%)	55 (10)	52 (9)	52 (10)	51 (8)	53 (10)	0.418
LV end-diastolic volume, ml						
Men	162 (33)	168 (147, 187)	168 (22)	169 (36)	166 (30)	0.900
Women	124 (25)	125 (113, 145)	122 (30)	134 (26)	126 (21)	0.497
LV end-systolic volume (mL)						
Men	73 (55, 94)	79 (64, 98)	75 (64, 94)	81 (74, 103)	76 (60, 100)	0.496
Women	53 (41, 66)	64 (50, 69)	64 (57, 71)	66 (57, 70)	56 (45, 65)	0.383
LV mass (g)						
Men	142 (124, 159)	145 (130, 166)	149 (135, 170)	143 (126, 159)	141 (130, 160)	0.526
Women	97 (84, 108)	101 (89, 124)	103 (92, 113)	109 (93, 132)	97 (83, 101)	0.113
Oedema and infarct characteristics						
Area at risk, % LV mass	32 (12)	40 (11)	37 (11)	35 (10)	36 (11)	0.482
Infarct size, % LV mass	16 (7, 27)	25 (16, 32)	25 (18, 34)	27 (18, 32)	22 (16, 32)	0.386
Myocardial salvage, % of LV mass	18 (12, 24)	17 (12, 23)	18 (12, 24)	17 (10, 22)	16 (13, 22)	0.546
Myocardial salvage index, % of LV mass	62 (44, 84)	49 (36, 62)	50 (40, 62)	46 (30, 62)	50 (40, 63)	0.590
Late microvascular obstruction present, n (%)	145 (50)	23 (14)	49 (91)	45 (85)	43 (81)	0.356
Late microvascular obstruction, % LV mass	0.1 (0.0, 3.5)	2.7 (0.8, 7.5)	5.2 (1.7, 10.5)	2.7 (0.9, 7.1)	1.7 (0.3, 4.7)	0.005
Myocardial haemorrhage, n (%)*	96 (40)	94 (67)	34 (76)	35 (70)	25 (54)	0.086
Myocardial native T1 values						
T1 remote myocardium (all subjects) (ms)	961 (25)	964 (26)	958 (28)	962 (20)	972 (28)	0.014
Men	959 (25)	962 (26)	955 (29)	959 (19)	973 (26)	0.004
Women	968 (25)	969 (26)	969 (22)	969 (22)	968 (36)	0.992
T1 infarct zone (ms)	1097 (52)	1093 (52)	1052 (37)	1088 (33)	1140 (22)	<0.001
T1 hypo-intense infarct core (ms)	997 (57)	997 (57)	938 (30)	995 (12)	1060 (37)	<0.001
Myocardial native T2 values						
T2 infarct core (n = 171, ms)	54 (5)	54 (5)	52 (4)	53 (4)	56 (5)	<0.001
CMR findings 6 months post-MI (n = 267)						
LV ejection fraction at 6 months (%)	63 (57, 69)	60 (53, 65)	59 (53, 65)	59 (54, 64)	61 (54, 68)	0.542

Continued

Table 2 Continued

Characteristics*	All patients (n = 288)	Patients with a native T1 infarct core Hypo-intense core (n = 160)	Patients with a native T1 infarct core grouped by tertile of infarct core zone native T1 (ms) at baseline ≤973 ms (n = 54) 974 < T1 core ≤1014 ms (n = 53) >1014 ms (n = 53)	P-value
LV end-diastolic volume at 6 months (mL)				
Men	165 (140, 193)	176 (155, 204)	169 (153, 197)	0.367
Women	124 (110, 136)	120 (96, 139)	130 (122, 153)	0.338
LV end-systolic volume at 6 months (mL)				
Men	61 (43, 78)	69 (56, 95)	69 (62, 84)	0.667
Women	43 (34, 58)	55 (44, 61)	60 (50, 65)	0.213

LV, left ventricle; T1, myocardial longitudinal relaxation time. Area at risk was measured with T2-mapping. Data are given as n (%) or mean (SD). P-values were obtained from one-way ANOVA, Kruskal–Wallis test, or a Fisher test. *Data are reported as mean (SD), median (IQR), or n (%) as appropriate. Data on T2*-CMR for myocardial haemorrhage were not available in 48 patients. Three T1 maps (basal-, mid-, and distal-ventricular levels) were measured in each patient (n = 876 T1-maps overall). Overall, 20 (6.8%) patients had poor quality T1 maps and 4 (1.3%) patients had no evaluable T1 maps (Figure 2). In all, 42 (4.8%) T1 maps were unsuitable for analysis because of SSFP off-resonance artefacts and 19 (2.2%) T1 maps were affected by motion artefacts. T1 values were higher in infarct tissue surrounding the infarct core than within the infarct core (P < 0.001) and remote myocardium (P < 0.001).

patients without late microvascular obstruction are described in Supplementary material online, Methods.

Receiver-operating curve (ROC), Kaplan–Meier, and Cox proportional hazards methods were used to identify potential clinical predictors of all-cause death/heart failure events and MACE, including patient characteristics, CMR findings, and native T1. The net reclassification improvement (NRI) was calculated as described by Pencina et al.³⁸

All P-values are two sided. P-value of <0.05 should be interpreted exploratively. Statistical analyses were performed using R version 2.15.1 or SAS v 9.3, or higher versions of these programs.

Results

Of 343 STEMI patients referred for emergency reperfusion therapy, 300 underwent serial CMR at 1.5 T 2.2 ± 1.9 days and 6 months after hospital admission (Figure 2). Two hundred and ninety-two STEMI patients had a T1-map acquisition and 288 (99%) had evaluable T1 data (Figure 2). Cardiac magnetic resonance follow-up at 6 months was achieved in 267 (93%) of the patients and the reasons for non-attendance are summarized in Figure 2. Information on vital status and SAEs were available in all (100%) of the 288 participants.

Patient characteristics

Table 1 shows the characteristics of the patients, including the patients with a hypo-intense infarct core revealed by native T1 mapping [n = 160 (56%), grouped by thirds of native T1]. The C-reactive protein and leucocyte results are described in Supplementary material online, Table S1. The characteristics of those patients with missing CMR data at 6 months are described in Supplementary material online, Table S2.

Left ventricular function and pathology

Initial cardiac magnetic resonance findings following hospital admission

The CMR findings are summarized in Table 2 and case examples are shown in Figure 2. At baseline, the mean (SD) myocardial infarct size was 18 (14) % of LV mass. The average infarct core native T1 (997 (57) ms) was higher than native T1 in the remote myocardium 961 (25) ms; P < 0.01] but lower than native T1 in the area at risk (1097 (52) ms; P < 0.01). The ICC for T1 core is described in Supplementary material online, Results.

Baseline associates of infarct core native T1 (Hypothesis 1)

Native T1 in the infarct core was inversely associated with thrombolysis in myocardial infarction (TIMI) coronary flow grades at the end of emergency PCI, Killip class and neutrophil count at initial presentation (all P < 0.04), independent of left ventricular ejection fraction (LVEF), LV end-diastolic volume, or infarct size (Table 3).

Infarct core native T1 (ms) was univariably associated with infarct core T2 (ms) (r = 0.42; P < 0.001).

Relationships for native T1 infarct core vs. infarct pathology, including infarct core T2, myocardial haemorrhage, and microvascular obstruction and 137 (86%) STEMI patients with a hypo-intense native T1 infarct core also had microvascular obstruction. In contrast, only 6.3% of those without hypo-intense infarct core had late microvascular obstruction. The negative- and positive predictive values of

Table 3 Associates of infarct core native T1 time (for a 10 ms difference) in 160 ST-elevation myocardial infarction survivors with infarct core pathology revealed by native T1 mapping with cardiac magnetic resonance 2 days post-myocardial infarction

Multiple stepwise regression (for a 10 ms difference in infarct core T1)	Coefficient (95% CI)	P-value
A. Including patient characteristics and angiographic data*		
Systolic blood pressure at initial angiography (mmHg)	-0.05 (-0.09, -0.01)	0.007
Killip Class 3 or 4	-3.84 (-6.87, -0.80)	0.014
TIMI flow Grade 2 or 3 post-PCI	-7.51 (-15.42, 0.40)	0.063
B. Including patient characteristics, angiographic data, and minimum neutrophil count*		
Systolic blood pressure at initial angiography (mmHg)	-0.05 (-0.09, -0.01)	0.015
Killip Class 3 or 4	-3.39 (-6.45, -0.33)	0.030
TIMI flow Grade 2 or 3 at the end of PCI	-9.77 (-17.67, -1.87)	0.005
Minimum neutrophil count ($\times 10^9$ L)	-0.50 (-0.86, -0.15)	0.005
C. Including patient characteristics, angiographic data, minimum neutrophil count, and T2 core (1 ms) ^a		
T2 core (1 ms)	0.50 (0.32, 0.67)	<0.001
Neutrophils	-0.39 (-0.71, 0.07)	0.016
Gender (male)	-2.32 (-4.25, 0.39)	0.019
SBP	-0.03 (-0.07, 0.00)	0.059
TIMI 2/3 post-PCI	-5.46 (-12.62, 1.70)	0.134

The coefficient (95% CIs) indicates the magnitude and direction of the effect of the patient characteristic (binary or continuous) on the infarct core T1 (ms). For example, in models A and B, on average, infarct core native T1 (10 ms difference) is 0.50 lower for each 1 mmHg increase in SBP.

^aThe clinical and angiographic characteristics that were assessed are listed in Table 1. The univariable associates with native T1 in the infarct core are described in Supplementary material online, Results. Separate multivariable analyses were performed for (A) patient characteristics and angiographic data and (B) CMR data. Cardiac magnetic resonance parameters, which were all highly correlated with one another, were included separately in multiple stepwise regression models with patient characteristics and angiographic data to reduce multi-collinearity.

Similar results were obtained when area at risk, LV ejection fraction, LV end-systolic volume, and infarct size were included. Maximum leucocyte count ($P = 0.053$) and maximum monocyte count ($P = 0.034$) remained associates of infarct core native T1 after adjustment for LV end-diastolic volume. Similar results were also obtained in the multivariable model with LV end-diastolic volume for minimum leucocyte count ($P = 0.011$).

native T1 infarct core for T2 infarct core, myocardial haemorrhage, EGE, and microvascular obstruction are summarized in Supplementary material online, Table S2.

Infarct core tissue characteristics as a marker of subsequent left ventricular remodelling (Hypothesis 2)

At 6 months, LV end-diastolic volume increased on average (SD) by 5 (25) ml in 262 patients with evaluable data (Table 2). Adverse remodelling occurred in 30 (12%) patients and 23 (77%) of these patients had a hypo-intense native T1 core at baseline. Infarct core native T1 (ms) was not associated with change in LV end-diastolic volume at follow-up ($P = 0.531$). In multivariable regression, native T1 (ms, continuous) within the hypo-intense core was inversely associated with adverse remodelling (Table 4).

In a sensitivity analysis, the occurrence of a hypo-intense core within the infarct zone on T1 mapping was associated with the odds ratio for being in the top quarter of an increase in LV end-diastolic volume at 6 months (native T1 core to predict Q4 ($n = 66$) vs. Q1–Q3 ($n = 196$) ($n = 26$ missing); odds ratio 0.994 (0.987, 0.999); $P = 0.048$).

Native T1 infarct core, microvascular obstruction, and left ventricular outcomes at 6 months

The relationships for infarct core native T1 (binary and continuous), T2 core (binary and continuous), microvascular obstruction (binary,

% LV mass), and myocardial haemorrhage for LV outcomes, including LV end-diastolic volume and LV ejection fraction, are shown in Table 5. The presence of a hypo-intense infarct core disclosed by native T1 and native T2, the presence and amount of microvascular obstruction, and the occurrence of myocardial haemorrhage, were consistently associated with LV outcomes. Native T1 (ms) was not associated with LV volumes at follow-up, and there was no evidence of non-linearity between infarct core T1 (ms) and LV outcomes.

Infarct core native T1 early post-MI was associated with the concentration of NT-proBNP, a biochemical measure of LV remodelling, at 6 months independent of LV end-diastolic volume at baseline (Supplementary material online, Results).

Infarct core tissue characteristics and health outcomes (Hypothesis 3)

All 288 patients had long-term follow-up data completed. Thirty (10.4%) patients died or experienced a heart failure event. These events included 5 cardiovascular deaths, 3 non-cardiovascular deaths, and 22 episodes of heart failure (Killip Class 3 or 4 heart failure ($n = 20$) or defibrillator implantation $n = 2$). Thirteen (4.5%) patients died or experienced a first heart failure hospitalization post-discharge, and 8 (61.5%) of these patients had a hypo-intense infarct core at baseline.

Native T1 values (ms) within the hypo-intense infarct core ($n = 160$ STEMI patients) were inversely associated with the risk

Table 4 Multivariable associates of adverse LV remodelling revealed by cardiac magnetic resonance in ST-elevation myocardial infarction survivors^a after 6 months follow-up

Multivariable associations	Odds ratio (95% CI)	P-value
A. Patient and angiographic characteristics		
Native T1 infarct core, per 10 ms	0.91 (0.82, 1.00)	0.061
Current smoking	5.27 (1.07, 26.00)	0.041
Sustained ventricular arrhythmia	16.06 (1.67, 154.43)	0.016
Incomplete ST-segment resolution	3.29 (0.85, 12.78)	0.085
B. Patient and angiographic characteristics and infarct core native T2		
Native T1 infarct core, per 10 ms	0.91 (0.81, 1.01)	0.073
Native T2 infarct core, per 10 ms	1.01 (0.28, 3.67)	0.987
Current smoking	4.99 (0.99, 25.06)	0.051
Sustained ventricular arrhythmia	15.26 (1.57, 148.71)	0.019
Incomplete ST-segment resolution	3.18 (0.81, 12.43)	0.097
C. Patient and angiographic characteristics and myocardial haemorrhage		
Native T1 infarct core, per 10 ms	0.90 (0.81, 1.01)	0.070
Myocardial haemorrhage	0.57 (0.14, 2.41)	0.449
Current smoking	4.78 (0.83, 27.52)	0.080
Sustained ventricular arrhythmia	11.70 (0.94, 144.88)	0.055
Incomplete ST-segment resolution	3.68 (0.90, 15.02)	0.069

The odds ratio (95% CIs) indicates the magnitude and direction for adverse LV remodelling. For a 10 ms increase in native T1, the odds ratio for adverse LV remodelling reduced (0.91 (0.82, 1.00); $P = 0.061$). For a 1 ms increase in native T1, the odds ratio for adverse LV remodelling reduced [0.99 (0.98, 1.00); $P = 0.061$].

^aTwenty clinical characteristics at baseline that were univariable associates of adverse LV remodelling at 6 months post-MI were included in the multivariable model and these univariable associates are described in Supplementary material online, Results. Two hundred and sixty-seven STEMI patients had CMR at 6 months and baseline and 23 of these patients had missing data of at least one of the univariable characteristics that were included in this multivariable model. C-statistic [area-under-the-curve (AUC)] for the multivariable model in 244 subjects but not including native T1 core: 0.95; C-statistic (AUC) for the model (above) including infarct core native T1 ($n = 136$): 0.81; net reclassification index for incremental addition of T1 core to the model: 0.31, $P = 0.184$.

When the multivariable model for adverse remodelling included infarct size, the AUC without native T1 core (continuous, ms) was 0.823 and the AUC with T1 core values included was 0.857. Inclusion of native T1 core values neither increased nor reduced the predictive value of this model (net reclassification index $P = 0.16$).

There was no threshold for native T1 core value in the infarct core in relation to its association with LV outcomes at baseline or during follow-up.

of all-cause death or first hospitalization for heart failure post-discharge (for a 10 ms increase in native T1: hazard ratio 0.730, 95% confidence interval (CI) 0.617, 0.863; $P < 0.001$) including after adjustment for LVEF at baseline, infarct core T2 (10 ms difference), and myocardial haemorrhage (Figure 3; Table 6). Infarct core T1 retained its prognostic significance over and above infarct core T2 and myocardial haemorrhage (Table 6, models C–F). The net reclassification index for the inclusion of infarct core native T1 (10 ms) in a multivariable prognostic model for all-cause death or heart failure post-discharge was 1.129 (95% CI 0.516, 1.742); $P < 0.001$) (Table 6). Using ROC analysis, the C-index for infarct core native T1 for all-cause death or heart failure was 0.806. The C-indexes for the prognostic model without and with infarct core native T1 (ms) were 0.715 and 0.931, respectively.

Prognostic importance of infarct core native T1: comparisons with microvascular obstruction and longer term health outcomes

In univariate Cox models for infarct core native T1 (ms), native T1 core (binary), T2 core (ms), T2 core (binary), myocardial haemorrhage and the presence (binary) and amount of microvascular obstruction (% LV mass), only infarct core native T1 (ms)

($P < 0.001$) and the amount of microvascular obstruction (% LV mass) ($P < 0.001$) were associated with all-cause death or first heart failure hospitalisation after discharge. In a post-hoc analysis stimulated by peer review, the odds ratio for infarct core T1 (10 ms) at baseline for the occurrence of all-cause death, heart failure hospitalisation or adverse LV remodelling was 0.92 (95% CI 0.85, 0.99), $P = 0.0312$. The inverse relationships between infarct core native T1 (ms) and LV surrogate and adverse health outcomes were reasonably linear, and there was no cut-off value for infarct core T1 (ms) for these outcomes.

Discussion

The main findings of our study are (i) native T1 mapping revealed without an intravenous contrast agent resulted in evaluable scans in 96% of STEMI survivors 2 days post-MI; (ii) acute culprit coronary artery blood flow and circulating measures of systemic inflammation at the time of the hospital admission were multivariable associates of native T1 within the hypo-intense infarct core revealed by T1 mapping 2 days later; (iii) native T1 values (ms) within the infarct core were clinically meaningful since they were independently associated with adverse remodelling, NT-proBNP concentrations at 6 months,

Table 5 The univariable relationships for infarct core characteristics revealed by native T1 and microvascular obstruction for LV outcomes at baseline and during follow-up in 288 ST-elevation myocardial infarction patients

		LVEDV at baseline	LVEDV at 6 months	LVEF at baseline	LVEF at follow-up
T1 core (per 10 ms)	Standardized β	-0.042	-0.035	0.151	0.055
	P-value	0.596	0.520	0.057	0.485
T1 core (binary)	β	16.410	13.80	-6.642	-4.652
	P-value	<0.0001	<0.0001	<0.0001	<0.0001
T2 core (per 10 ms)	Standardized β	0.035	0.057	0.159	-0.033
	P-value	0.653	0.282	0.037	0.586
T2 core (binary)	β	15.538	12.875	-6.542	-4.494
	P-value	<0.001	<0.0001	<0.0001	<0.0001
Myocardial haemorrhage (T2* core, binary)	β	17.205	16.811	-6.374	-5.769
	P-value	<0.0001	<0.0001	<0.0001	<0.0001
Microvascular obstruction (% of LV mass)	Standardized β	0.186	0.209	-0.443	-0.283
	P-value	0.002	<0.0001	<0.0001	0.004
Microvascular obstruction (binary)	β	15.853	12.454	-6.620	-4.464
	P-value	<0.001	<0.0001	<0.0001	<0.0001

The relationships for infarct core native T1 relaxation time (per 10 ms), native T1 infarct core (binary), and the presence and the amount of microvascular obstruction ($n = 145$ STEMI patients) with LV outcomes are summarized by P-values and, for continuous predictors, standardized regression coefficients or odds ratios per SD increase in native T1 (ms) or extent of microvascular obstruction (% of LV mass). Models with follow-up data are adjusted for baseline. Binary predictors are summarized by P-values and unstandardized regression coefficients or odds ratios (listed beneath table).

The odds ratio (P-values) for adverse remodelling and infarct core characteristics are: native T1 core (per 10 ms): 0.939, $P = 0.122$; native T1 core (present/absent): 2.692, $P = 0.016$; T2 core (present/absent): 2.874, $P = 0.026$; myocardial haemorrhage (present/absent): 2.556, $P = 0.025$; microvascular obstruction (% LV mass): 1.112, $P = 0.004$; microvascular obstruction (present/absent): 1.883, $P = 0.115$.

LVEDV, left ventricular end-diastolic volume; LVEF, left ventricular ejection fraction.

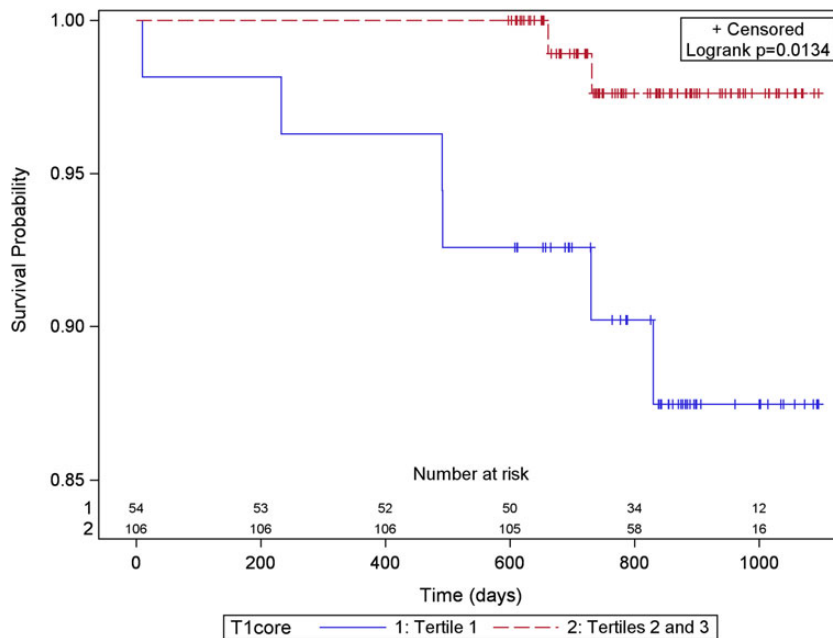


Figure 3 Kaplan–Meier survival curves for 160 ST-elevation myocardial infarction patients grouped according to the native T1 value in the infarct core with patients grouped by thirds (lowest T1 tertile vs. tertiles 2 and 3) and all-cause death or first heart failure hospitalization ($n = 13$) after discharge from hospital to the end of follow-up [censor time 839 (598–1099) days]. Infarct core native T1 values in the lowest tertile were associated with all-cause death or heart failure hospitalization.

Table 6 Relationships for infarct core T1 and T2 relaxation times (10 ms) revealed by cardiac magnetic resonance at baseline in 160 ST-elevation myocardial infarction patients with an infarct core and all-cause death or first hospitalization for heart failure post-discharge [median (range) follow-up duration of 841 (723–945) days]

Associations	Hazard ratio (95% CI)	P-value
Univariable associations		
Infarct core native T1 (for a 10 ms difference)	0.730 (0.617, 0.863)	<0.001
Myocardial haemorrhage	2.488 (0.814, 7.609)	0.110
LVEF at baseline (for a 1% difference)	0.934 (0.885, 0.985)	0.013
Peak log eosinophil count ($\times 10^9/L$)	0.617 (0.432, 0.881)	0.008
Model A		
Infarct core native T1 (for a 10 ms difference)	0.744 (0.627, 0.883)	<0.001
LVEF at baseline (1% difference)	0.938 (0.883, 0.996)	0.036
Model B		
Infarct core native T1 (for 10 ms difference)	0.737 (0.621, 0.875)	<0.001
Peak log eosinophil count ($1 \times 10^9/L$)	0.728 (0.476, 1.114)	0.144
Univariable associations		
Infarct core native T2 (for a 10 ms difference)	0.186 (0.032, 1.094)	0.063
Model C		
Infarct core native T2 (for a 10 ms difference)	0.244 (0.039, 1.528)	0.132
LVEF at baseline (for a 1% difference)	0.932 (0.870, 0.998)	0.044
Model D		
Infarct core native T2 (for 10 ms difference)	0.203 (0.034, 1.297)	0.093
Peak log eosinophil count ($\times 10^9/L$)	0.681 (0.460, 1.007)	0.054
Model E		
Infarct core T1 (for 10 ms difference)	0.738 (0.624, 0.873)	<0.001
Myocardial haemorrhage	1.965 (0.229, 16.864)	0.538
Model F		
Infarct core T1 (for 10 ms difference)	0.752 (0.634, 0.893)	0.001
Infarct core T2 (for a 10 ms difference)	0.428 (0.068, 2.683)	0.365
Myocardial haemorrhage	1.485 (0.159, 13.879)	0.729

Thirteen (8.1%) patients experienced all-cause death or heart failure hospitalization post-discharge. Given the limited number of adverse events, the models were specified to assess the prognostic relationships of infarct core native T1 vs. circulating markers of systemic inflammation, LV function, LV volume, and infarct characteristics that were measured at approximately the same time 2 days after hospital admission.

LVEF, left ventricular ejection fraction. Infarct core T1 (10 ms difference) is highlighted in bold.

and all-cause death or heart failure hospitalization post-discharge during longer term follow-up; (iv) compared with infarct core T2 or myocardial haemorrhage revealed by T2* mapping, infarct core T1 was more consistently associated with LV surrogate outcomes and all-cause death or heart failure hospitalization (Table 6), implying T1 core is more closely linked with infarct pathology; (v) compared with microvascular obstruction revealed by contrast-enhanced CMR, a hypo-intense infarct core revealed by T1 mapping had similar prognostic significance for LV outcomes at 6 months and for post-discharge cardiac events including all-cause mortality and heart failure hospitalization in the longer term (Tables 5 and 6). Finally, our paper adds to the emerging literature on the prognostic value of quantitative native T1 CMR³⁹ and reaffirms the prognostic importance of MVO post-STEMI.³

The results of this study extend what is known about infarct core pathology, and also provide a potential mechanistic explanation. Infarct size^{1,2} and pathology, including microvascular obstruction,³ haemorrhage,⁵ and salvage,⁴ predict cardiac morbidity and mortality

post-MI. These pathologies are revealed by contrast-enhanced CMR, and until recently, the assessment of infarct tissue without an intravenous contrast agent has been limited to T2-weighted and T2* imaging of myocardial haemorrhage.^{5,11,29,40,41} T1-mapping methods, including MOLLI^{15,20} and shMOLLI,^{42,43} can now be integrated into clinical CMR protocols. Previous studies have assessed myocardial native T1 in experimental MI models *ex vivo*,^{8,10} *in vivo*,¹¹ or in proof-of-concept clinical studies involving much smaller numbers of MI patients.^{9,12–15} Our study extends these findings in a much larger STEMI cohort and provides new evidence that native T1 core is more reflective of the severity of infarct injury and its prognostic importance than infarct core T2 and potentially also myocardial haemorrhage.

We also compared infarct core pathology delineated by native T1 mapping with microvascular obstruction, which is an established prognostic CMR biomarker post-MI.³ Native T1 mapping is obtained without the use of an intravenous gadolinium-based contrast agent whereas microvascular obstruction is revealed by CMR

imaging of EGE and LGE after intravenous contrast administration. We observed a high degree of concordance between the occurrence of a hypo-intense infarct core depicted by native T1 CMR (56%) and microvascular obstruction (50%) as revealed by contrast-enhanced CMR. Although both a native T1 core and microvascular obstruction are depicted as a hypo-intense core within the hyperintense infarct zone (Figure 2), the physics of the CMR techniques is entirely different. A hypo-intense infarct core depicted by non-contrast native T1 mapping is due to local destruction of the T1 magnetization signal. On the other hand, microvascular obstruction (Figure 2) is due to a failure of gadolinium contrast to penetrate within the infarct core. Both CMR methods are T1-weighted but contrast kinetics are not relevant for native T1 mapping since intravenous contrast is not administered. Accordingly, T1 mapping avoids the theoretical risks and actual restrictions associated with contrast-enhanced CMR. Furthermore, acquisition of the native T1 map does not prolong the CMR scan, in contrast to late gadolinium enhancement imaging for microvascular obstruction which is typically imaged 10–15 min after dosing.¹⁹

Culprit artery coronary flow at the end of emergency PCI reflects the efficacy of coronary reperfusion, and reduced coronary flow initially independently predicted native T1 relaxation time within infarct core as assessed by CMR 2 days later. Similar associations also exist for microvascular obstruction,^{44,45} and in our study, both infarct core native T1 and microvascular obstruction were independently associated with circulating biomarkers of acute systemic inflammation. The occurrence of an infarct core disclosed by native T1 mapping, and the nature of the core (i.e. the native T1 value), was associated with the initial severity of MI (i.e. Killip heart failure class), systemic inflammation (i.e. leucocyte counts), and LV remodelling and health outcomes in the longer term. We think that the prognostic significance of native T1 values within the hypo-intense core are a distinctive attribute compared with microvascular obstruction since signal-intensity values within microvascular obstruction are not clinically meaningful beyond binary categorization (i.e. present/absent).

Limitations

We performed a single centre natural-history study involving near-consecutive STEMI admissions. The STEMI patients in our natural-history study were recruited 24/7 therefore flow cytometry and routine NT-proBNP testing in all participants was not pragmatically possible.

T1 assessment is sensitive to motion artefacts and imperfect breath holding, which may reduce image quality. A shortened version of this sequence (ShMOLLI) involving only nine heart beats has been developed. This method shortens breath hold time and may help to account for these limitations.⁴² Despite this, the MOLLI method has high precision reproducibility. Our T1 measurements are in good agreement with *in vivo* data published in the literature, including previous measurements using the ShMOLLI sequence.^{42,43}

The limited number of adverse events constrained the number of variables that could be included in the multivariable models (e.g. Tables 4 and 6); however, the associations between infarct core native T1 and a range of surrogate and clinical outcomes including adverse remodelling revealed by CMR, NT-proBNP, and the primary health outcome (all-cause death/heart failure), supports

the adverse prognostic importance of infarct core native T1. Our study does not permit inference on causality, and other interpretations of our data are possible and further studies are warranted.

Conclusions

We found that infarct core pathology revealed by native T1 maps had similar prognostic value compared with microvascular obstruction revealed by late gadolinium enhancement CMR. Native T1 mapping is potentially widely applicable in clinical practice, not limited by renal disease, and so potentially could represent an alternative non-contrast CMR option for the assessment of infarct pathology.

Supplementary material

Supplementary material is available at *European Heart Journal* online.

Acknowledgements

We thank the patients who participated in this study and the staff in the Cardiology and Radiology Departments. We thank Peter Weale and Patrick Revell (Siemens Healthcare, UK).

Authors' contributions

C.H., I.F.: performed statistical analysis. C.B., K.O., I.F.: handled funding and supervision. D.C., M.M., M.P., H.E., M.L., S.W., S.H., A.M.: acquired the data. C.B., I.F.: conceived and designed the research. D.C., C.B., C.H.: drafted the manuscript. D.C., C.B., C.H., N.S., P.W.: made critical revision of the manuscript for key intellectual content. S.R., I.M., N.A., N.T., A.R.: have contributed other than the above listed.

Funding

This research was supported by the British Heart Foundation Grant (Project Grant PG/11/2/28474), the National Health Service, and the Chief Scientist Office. Professor Berry was supported by a Senior Fellowship from the Scottish Funding Council. Dr Welsh is supported by BHF Fellowship FS/12/62/29889. Funding to pay the Open Access publication charges for this article was provided by the University of Glasgow.

Conflict of interest: This project was supported by research collaboration with Siemens Healthcare.

References

- Holman BL, Chisholm RJ, Braunwald E. The prognostic implications of acute myocardial infarct scintigraphy with ^{99m}Tc-pyrophosphate. *Circulation* 1978;**57**: 320–326.
- Pfeffer MA, Braunwald E. Ventricular remodeling after myocardial infarction. Experimental observations and clinical implications. *Circulation* 1990;**81**:1161–1172.
- van Kranenburg M, Magro M, Thiele H, de Waha S, Eitel I, Cochet A, Cottin Y, Atar D, Buser P, Wu E, Lee D, Bodi V, Klug G, Metzler B, Delewi R, Bernhardt P, Rottbauer V, Boersma E, Zijlstra F, van Geuns RJ. Prognostic value of microvascular obstruction and infarct size, as measured by CMR in STEMI patients. *JACC Cardiovasc Imaging* 2014;**7**:930–939.
- Eitel I, Desch S, Fuernau G, Hildebrand L, Gutberlet M, Schuler G, Thiele H. Prognostic significance and determinants of myocardial salvage assessed by cardiovascular magnetic resonance in acute reperfused myocardial infarction. *J Am Coll Cardiol* 2010;**55**:2470–2479.
- Eitel I, Kubusch K, Strohm O, Desch S, Mikami Y, de Waha S, Gutberlet M, Schuler G, Friedrich MG, Thiele H. Prognostic value and determinants of a hypointense infarct core in T2-weighted cardiac magnetic resonance in acute reperfused ST-elevation-myocardial infarction. *Circ Cardiovasc Imaging* 2011;**4**:354–362.

6. Mathur-De Vre R. Biomedical implications of the relaxation behaviour of water related to NMR imaging. *Br J Radiol* 1984;**57**:955–976.
7. Cameron IL, Ord VA, Fullerton GD. Characterization of proton NMR relaxation times in normal and pathological tissues by correlation with other tissue parameters. *Magn Reson Imaging* 1984;**2**:97–106.
8. Williams ES, Kaplan JL, Thatcher F, Zimmerman G, Knoebel SB. Prolongation of proton spin lattice relaxation times in regionally ischemic tissue from dog hearts. *J Nucl Med* 1980;**21**:449–453.
9. Been M, Smith MA, Ridgway JP, Douglas RH, de Bono DP, Best JJ, Muir AL. Serial changes in the T1 magnetic relaxation parameter after myocardial infarction in man. *Br Heart J* 1988;**59**:1–8.
10. Higgins CB, Herfkens R, Lipton MJ, Sievers R, Sheldon P, Kaufman L, Crooks LE. Nuclear magnetic resonance imaging of acute myocardial infarction in dogs: alterations in magnetic relaxation times. *Am J Cardiol* 1983;**52**:184–188.
11. Yang Y, Foltz WD, Graham JJ, Detsky JS, Dick AJ, Wright GA. MRI evaluation of microvascular obstruction in experimental reperfused acute myocardial infarction using a T1 and T2 preparation pulse sequence. *J Magn Reson Imaging* 2007;**26**:1486–1492.
12. Dall'Armellina E, Ferreira VM, Kharbanda RK, Prendergast B, Piechnik SK, Robson MD, Jones M, Francis JM, Choudhury RP, Neubauer S. Diagnostic value of pre-contrast T1 mapping in acute and chronic myocardial infarction. *JACC Cardiovasc Imaging* 2013;**6**:739–742.
13. Dall'Armellina E, Piechnik SK, Ferreira VM, Si QL, Robson MD, Francis JM, Cuculi F, Kharbanda RK, Banning AP, Choudhury RP, Karamitsos TD, Neubauer S. Cardiovascular magnetic resonance by non contrast T1-mapping allows assessment of severity of injury in acute myocardial infarction. *J Cardiovasc Magn Reson* 2012;**14**:15.
14. Messroghli DR, Niendorf T, Schulz-Menger J, Dietz R, Friedrich MG. T1 mapping in patients with acute myocardial infarction. *J Cardiovasc Magn Reson* 2003;**5**:353–359.
15. Messroghli DR, Walters K, Plein S, Sparrow P, Friedrich MG, Ridgway JP, Sivananthan MU. Myocardial T1 mapping: application to patients with acute and chronic myocardial infarction. *Magn Reson Med* 2007;**58**:34–40.
16. Ugander M, Bagi PS, Oki AJ, Chen B, Hsu LY, Aletras AH, Shah S, Greiser A, Kellman P, Arai AE. Myocardial edema as detected by pre-contrast T1 and T2 CMR delineates area at risk associated with acute myocardial infarction. *JACC Cardiovasc Imaging* 2012;**5**:596–603.
17. Steg PG, James SK, Atar D, Badano LP, Blomstrom-Lundqvist C, Borger MA, Di Mario C, Dickstein K, Ducrocq G, Fernandez-Aviles F, Gershlick AH, Giannuzzi P, Halvorsen K, Huber K, Juni P, Kastrati A, Knuuti J, Lenzen MJ, Mahaffey KW, Valgimigli M, van't Hof A, Widimsky P, Zahger D. ESC Guidelines for the management of acute myocardial infarction in patients presenting with ST-segment elevation. *Eur Heart J* 2012;**33**:2569–2619.
18. Windecker S, Kolh P, Alfonso F, Collet JP, Cremer J, Falk V, Filippatos G, Hamm C, Head SJ, Juni P, Kappetein AP, Kastrati A, Knuuti J, Landmesser U, Laufer G, Neumann FJ, Richter DJ, Schauerte P, Sousa Uva M, Stefanini GG, Taggart DP, Torracca L, Valgimigli M, Wijns W, Witkowski A. 2014 ESC/EACTS Guidelines on myocardial revascularization: The Task Force on Myocardial Revascularization of the European Society of Cardiology (ESC) and the European Association for Cardio-Thoracic Surgery (EACTS) Developed with the special contribution of the European Association of Percutaneous Cardiovascular Interventions (EAPCI). *Eur Heart J* 2014;**35**:2541–2619.
19. Kramer CM, Barkhausen J, Flamm SD, Kim RJ, Nagel E. Standardized cardiovascular magnetic resonance (CMR) protocols 2013 update. *J Cardiovasc Magn Reson* 2013;**15**:91.
20. Messroghli DR, Radjenovic A, Kozerke S, Higgins DM, Sivananthan MU, Ridgway JP. Modified Look-Locker inversion recovery (MOLLI) for high-resolution T1 mapping of the heart. *Magn Reson Med* 2004;**52**:141–146.
21. Giri S, Chung YC, Merchant A, Mihai G, Rajagopalan S, Raman SV, Simonetti OP. T2 quantification for improved detection of myocardial edema. *J Cardiovasc Magn Reson* 2009;**11**:56.
22. Verhaert D, Thavendiranathan P, Giri S, Mihai G, Rajagopalan S, Simonetti OP, Raman SV. Direct T2 quantification of myocardial edema in acute ischemic injury. *JACC Cardiovasc Imaging* 2011;**4**:269–278.
23. Kellman P, Arai AE, McVeigh ER, Aletras AH. Phase-sensitive inversion recovery for detecting myocardial infarction using gadolinium-delayed hyperenhancement. *Magn Reson Med* 2002;**47**:372–383.
24. Moon JC, Messroghli DR, Kellman P, Piechnik SK, Robson MD, Ugander M, Gatehouse PD, Arai AE, Friedrich MG, Neubauer S, Schulz-Menger J, Schelbert EB, Society for Cardiovascular Magnetic Resonance I, Cardiovascular Magnetic Resonance Working Group of the European Society of C. Myocardial T1 mapping and extracellular volume quantification: a Society for Cardiovascular Magnetic Resonance (SCMR) and CMR Working Group of the European Society of Cardiology consensus statement. *J Cardiovasc Magn Reson* 2013;**15**:92.
25. Xue H, Greiser A, Zuehlsdorff S, Jolly MP, Guehring J, Arai AE, Kellman P. Phase-sensitive inversion recovery for myocardial T1 mapping with motion correction and parametric fitting. *Magn Reson Med* 2013;**69**:1408–1420.
26. Cerqueira MD, Weissman NJ, Dilsizian V, Jacobs AK, Kaul S, Laskey WK, Pennell DJ, Rumberger JA, Ryan T, Verani MS. Standardized myocardial segmentation and nomenclature for tomographic imaging of the heart. A statement for healthcare professionals from the Cardiac Imaging Committee of the Council on Clinical Cardiology of the American Heart Association. *Circulation* 2002;**105**:539–542.
27. Flett AS, Hasleton J, Cook C, Hausenloy D, Quarta G, Ariti C, Muthurangu V, Moon JC. Evaluation of techniques for the quantification of myocardial scar of differing etiology using cardiac magnetic resonance. *JACC Cardiovasc Imaging* 2011;**4**:150–156.
28. Berry C, Kellman P, Mancini C, Chen MY, Bandettini WP, Lowrey T, Hsu LY, Aletras AH, Arai AE. Magnetic resonance imaging delineates the ischemic area at risk and myocardial salvage in patients with acute myocardial infarction. *Circ Cardiovasc Imaging* 2010;**3**:527–535.
29. Payne AR, Casey M, McClure J, McGeoch R, Murphy A, Woodward R, Saul A, Bi X, Zuehlsdorff S, Oldroyd KG, Tzemos N, Berry C. Bright-blood T2-weighted MRI has higher diagnostic accuracy than dark-blood short tau inversion recovery MRI for detection of acute myocardial infarction and for assessment of the ischemic area at risk and myocardial salvage. *Circ Cardiovasc Imaging* 2011;**4**:210–219.
30. Franconi M, Bucciarelli-Ducci C, Carbone I, Canali E, Scardala R, Calabrese FA, Sardella G, Mancone M, Catalano C, Fedele F, Passariello R, Bogaert J, Agati L. Impact of primary coronary angioplasty delay on myocardial salvage, infarct size, and microvascular damage in patients with ST-segment elevation myocardial infarction: insight from cardiovascular magnetic resonance. *J Am College Cardiol* 2009;**54**:2145–2153.
31. Payne AR, Berry C, Doolin O, McEntegart M, Petrie MC, Lindsay MM, Hood S, Carrick D, Tzemos N, Weale P, McComb C, Foster J, Ford I, Oldroyd KG. Microvascular resistance predicts myocardial salvage and infarct characteristics in ST-elevation myocardial infarction. *J Am Heart Assoc* 2012;**1**:e002246.
32. Ghugre NR, Ramanan V, Pop M, Yang Y, Barry J, Qiang B, Connelly KA, Dick AJ, Wright GA. Quantitative tracking of edema, hemorrhage, and microvascular obstruction in subacute myocardial infarction in a porcine model by MRI. *Magn Reson Med* 2011;**66**:1129–1141.
33. Kandler D, Lucke C, Grothoff M, Andres C, Lehmkuhl L, Nitzsche S, Riese F, Mende M, de Waha S, Desch S, Lurz P, Eitel I, Gutberlet M. The relation between hypointense core, microvascular obstruction and intramyocardial haemorrhage in acute reperfused myocardial infarction assessed by cardiac magnetic resonance imaging. *Eur Radiol* 2014;**24**:3277–3288.
34. O'Regan DP, Ariff B, Neuwirth C, Tan Y, Durighel G, Cook SA. Assessment of severe reperfusion injury with T2* cardiac MRI in patients with acute myocardial infarction. *Heart* 2010;**96**:1885–1891.
35. Anderson LJ, Holden S, Davis B, Prescott E, Charrier CC, Bunce NH, Firmin DN, Wonke B, Porter J, Walker JM, Pennell DJ. Cardiovascular T2-star (T2*) magnetic resonance for the early diagnosis of myocardial iron overload. *Eur Heart J* 2001;**22**:2171–2179.
36. Thygesen K, Alpert JS, Jaffe AS, Simoons ML, Chaitman BR, White HD. Third universal definition of myocardial infarction. *Global Heart* 2012;**7**:275–295.
37. Hicks KA, Tcheng JE, Bozkurt B, Chaitman BR, Cutlip DE, Farb A, Fonarow GC, Jacobs JP, Jaff MR, Lichtman JH, Limacher MC, Mahaffey KW, Mehran R, Nissen SE, Smith EE, Targum SL. 2014 ACC/AHA Key Data Elements and Definitions for Cardiovascular Endpoint Events in Clinical Trials: A Report of the American College of Cardiology/American Heart Association Task Force on Clinical Data Standards (Writing Committee to Develop Cardiovascular Endpoints Data Standards). *J Am Coll Cardiol* 2015;**66**:403–469.
38. Pencina MJ, D'Agostino RB Sr, Steyerberg EW. Extensions of net reclassification improvement calculations to measure usefulness of new biomarkers. *Stat Med* 2011;**30**:11–21.
39. Banyersad SM, Fontana M, Maestrini V, Sado DM, Captur G, Petrie A, Piechnik SK, Whelan CJ, Herrey AS, Gillmore JD, Lachmann HJ, Wechalekar AD, Hawkins PN, Moon JC. T1 mapping and survival in systemic light-chain amyloidosis. *Eur Heart J* 2015;**36**:244–251.
40. Payne AR, Berry C, Kellman P, Anderson R, Hsu LY, Chen MY, McPhaden AR, Watkins S, Schenke W, Wright V, Lederman RJ, Aletras AH, Arai AE. Bright-blood T(2)-weighted MRI has high diagnostic accuracy for myocardial hemorrhage in myocardial infarction: a preclinical validation study in swine. *Circ Cardiovasc Imaging* 2011;**4**:738–745.
41. Robbers LF, Erenberg ES, Teunissen PF, Jansen MF, Hollander MR, Horrevoets AJ, Knaepen P, Nijveldt R, Heymans MW, Levi MM, van Rossum AC, Niessen HW, Marcu CB, Beek AM, van Royen N. Magnetic resonance imaging-defined areas of microvascular obstruction after acute myocardial infarction represent microvascular destruction and haemorrhage. *Eur Heart J* 2013;**34**:2346–2353.
42. Piechnik SK, Ferreira VM, Dall'Armellina E, Cochlin LE, Greiser A, Neubauer S, Robson MD. Shortened modified Look-Locker inversion recovery (ShMOLLI)

- for clinical myocardial T1-mapping at 1.5 and 3T within a 9 heartbeat breathhold. *J Cardiovasc Magn Reson* 2010;**12**:69.
43. Piechnik SK, Ferreira VM, Lewandowski AJ, Ntusi NA, Banerjee R, Holloway C, Hofman MB, Sado DM, Maestrini V, White SK, Lazdam M, Karamitsos T, Moon JC, Neubauer S, Leeson P, Robson MD. Normal variation of magnetic resonance T1 relaxation times in the human population at 1.5 T using ShMOLLI. *J Cardiovasc Magn Reson* 2013;**15**:13.
44. Amabile N, Jacquier A, Gaudart J, Sarra A, Shuaib A, Panuel M, Moulin G, Bartoli JM, Paganelli F. Value of a new multiparametric score for prediction of microvascular obstruction lesions in ST-segment elevation myocardial infarction revascularized by percutaneous coronary intervention. *Arch Cardiovasc Diseases* 2010;**103**:512–521.
45. van der Laan AM, Hirsch A, Robbers LF, Nijveldt R, Lommerse I, Delewi R, van der Vleuten PA, Biemond BJ, Zwaginga JJ, van der Giessen WJ, Zijlstra F, van Rossum AC, Voermans C, van der Schoot CE, Piek JJ. A proinflammatory monocyte response is associated with myocardial injury and impaired functional outcome in patients with ST-segment elevation myocardial infarction: monocytes and myocardial infarction. *Am Heart J* 2012;**163**:57–65.e2.

CARDIOVASCULAR FLASHLIGHT

doi:10.1093/eurheartj/ehv667

Online publish-ahead-of-print 18 December 2015

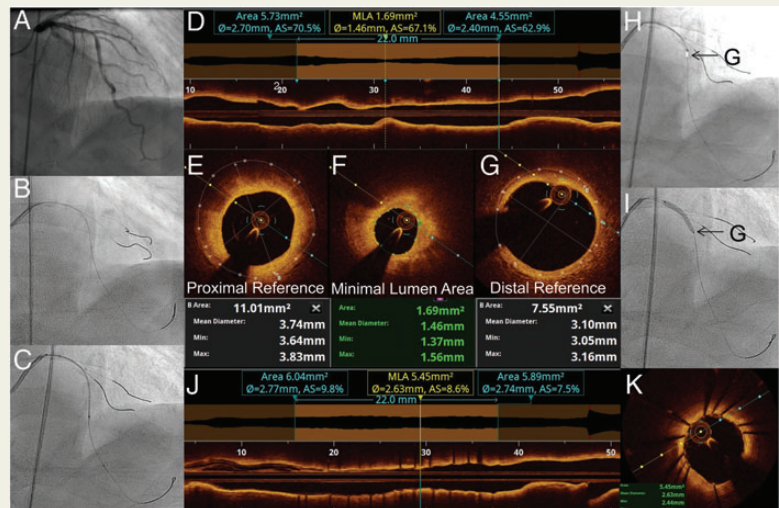
Optical coherence tomography-guided percutaneous coronary intervention in pre-terminal chronic kidney disease with no radio-contrast administration

Keyvan Karimi Galougahi^{1,2}, Adrian Zalewski¹, Martin B. Leon^{1,3}, Dimitri Karpaliotis^{1,3}, and Ziad A. Ali^{1,3*}

¹Division of Cardiology, Center for Interventional Vascular Therapy, New York Presbyterian Hospital and Columbia University, New York, NY, USA; ²Sydney Medical School Foundation, University of Sydney, Australia; and ³Cardiovascular Research Foundation, New York, NY, USA

*Corresponding author. Tel: +1 212 3057060, Email: zaa2112@columbia.edu

A 67-year-old man with advanced chronic kidney disease (CKD) (creatinine = 4.5 mg/dL, eGFR = 13 mL/min/1.73 m²) not requiring haemodialysis presented with progressive angina. Diagnostic angiography with ultra-low radio-contrast volume (12 mL, contrast volume/eGFR ratio <1) revealed significant stenosis in the left anterior descending (LAD) artery (Panel A). The lesion was haemodynamically significant (fractional flow reserve: 0.77). Post-angiography, the renal function remained stable. A staged percutaneous coronary intervention (PCI) was performed without utilizing radio-contrast medium. Previous angiographic images were used to guide catheter engagement and guidewire placement in the LAD and diagonal arteries, thus creating a metallic silhouette of the artery (Panel B). Repeat physiological assessment confirmed haemodynamic significance [FFR: 0.78, coronary flow reserve (CFR): 1.4]. Optical coherence tomography (OCT) with angiographic co-registration (Optisil, St Jude Medical, MA) was performed using a mixture of saline and colloid infusate to displace blood (Panels C and D). Proximal (Panel E) and distal (Panel G) reference diameters determined by measuring the distance between respective external elastic laminae and minimal luminal area (Panel F) were used for selection of the pre-dilation balloon and stent sizes. An automated angiographic co-registered OCT pullback was used to guide the PCI (Panels H and I, G: distal reference = white bar). Co-registered OCT was repeated to determine minimal stent area (Panels J and K) and to guide post-dilation. Post-procedure FFR improved to 0.93 and CFR to 3.0. Post-PCI renal function remained stable. This case highlights the feasibility of radio-contrast free OCT-angiographic co-registration guided PCI to prevent contrast-induced nephropathy and requirement for renal replacement therapy in selected extremely high-risk patients with near end-stage CKD.



Conflict of interest: D.K. has served as a speaker or a member of the speaker's bureau for Abbott Vascular, Boston Scientific and Medtronic. Z.A.A. is a speaker for and holds grant support from St Jude Medical.