

Communication

Geometrical effect in 2D Nanopores

Ke Liu, Martina Lihter, Aditya Sarathy, Sabina Caneva, Hu Qiu, Davide Deiana, Vasiliki Tileli, Duncan T. L. Alexander, Stephan Hofmann, Dumitru Dumcenco, Andras Kis, Jean-Pierre Leburton, and Aleksandra Radenovic

Nano Lett., **Just Accepted Manuscript** • Publication Date (Web): 08 Jun 2017

Downloaded from <http://pubs.acs.org> on June 8, 2017

Just Accepted

“Just Accepted” manuscripts have been peer-reviewed and accepted for publication. They are posted online prior to technical editing, formatting for publication and author proofing. The American Chemical Society provides “Just Accepted” as a free service to the research community to expedite the dissemination of scientific material as soon as possible after acceptance. “Just Accepted” manuscripts appear in full in PDF format accompanied by an HTML abstract. “Just Accepted” manuscripts have been fully peer reviewed, but should not be considered the official version of record. They are accessible to all readers and citable by the Digital Object Identifier (DOI®). “Just Accepted” is an optional service offered to authors. Therefore, the “Just Accepted” Web site may not include all articles that will be published in the journal. After a manuscript is technically edited and formatted, it will be removed from the “Just Accepted” Web site and published as an ASAP article. Note that technical editing may introduce minor changes to the manuscript text and/or graphics which could affect content, and all legal disclaimers and ethical guidelines that apply to the journal pertain. ACS cannot be held responsible for errors or consequences arising from the use of information contained in these “Just Accepted” manuscripts.



Geometrical effect in 2D Nanopores

Ke Liu^{1#*}, Martina Lihter^{1#}, Aditya Sarathy^{2,3}, Sabina Caneva⁴, Hu Qiu^{2†}, Davide Deiana⁵, Vasiliki Tileli⁶, Duncan T. L. Alexander⁵, Stephan Hofmann⁴, Dumitru Dumcenco⁷, Andras Kis⁷, Jean-Pierre Leburton^{2,3,8}, and Aleksandra Radenovic^{1*}

¹Laboratory of Nanoscale Biology, Institute of Bioengineering, School of Engineering, EPFL, 1015 Lausanne, Switzerland

²Beckman Institute for Advanced Science and Technology, University of Illinois, Urbana, Illinois 61801, United States

³Department of Electrical and Computer Engineering, University of Illinois, Urbana, Illinois 61801, United States

⁴Department of Engineering, University of Cambridge, JJ Thomson Avenue, CB3 0FA Cambridge, United Kingdom

⁵Centre Interdisciplinaire de Microscopie Électronique (CIME), EPFL, 1015 Lausanne, Switzerland

⁶Institute of Materials, EPFL, 1015 Lausanne, Switzerland

⁷Laboratory of Nanoscale Electronics and Structures, Institute of Electrical Engineering and Institute of Materials Science and Engineering, School of Engineering, EPFL, 1015 Lausanne, Switzerland

⁸Department of Physics, University of Illinois, Urbana, Illinois 61801, United States

[†]Present address: State Key Laboratory of Mechanics and Control of Mechanical Structures, Nanjing University of Aeronautics and Astronautics, Nanjing 210016, China

*Correspondence should be addressed ke.liu@epfl.ch and aleksandra.radenovic@epfl.ch
Tel: [+41 21 693 7371](tel:+41216937371) Fax: [+41 21 693 7380](tel:+41216937380)

Equal contribution

Abstract

A long-standing problem in the application of solid-state nanopores is the lack of the precise control over the geometry of artificially formed pores compared to the well-defined geometry in their biological counterpart, i.e. protein nanopores. To date, experimentally investigated solid-state nanopores have been shown to adopt approximately circular shape. In this letter, we investigate the geometrical effect of the nanopore shape on ionic blockage induced by DNA translocation using triangular h-BN nanopores and approximately circular molybdenum disulfide (MoS₂) nanopores. We observe a striking geometry-dependent ion scattering effect, which is further corroborated by a modified ionic blockage model. The well-acknowledged ionic blockage model is derived from uniform ion permeability through the 2D nanopore plane and hemisphere like access region in the nanopore vicinity. Based on our experimental results, we propose a modified ionic blockage model, which is highly related to the ionic profile caused by geometrical variations. Our findings shed light on

1
2
3 the rational design of 2D nanopores and should be applicable to arbitrary nanopore
4 shapes.
5

6
7 **Keywords:** Solid-state nanopores, 2D materials, molybdenum disulfide (MoS₂),
8 hexagonal boron nitride (h-BN), high-resolution transmission electron microscopy
9 (HRTEM), ion transport
10
11

12
13
14
15 Nanopores formed in 2D materials can be considered as apertures that shape ion fluxes
16 through their small volumes.¹⁻⁵ Typical nanopores, reported so far, exhibit geometrical
17 shapes that can be approximated to that of a circle having perfect symmetry.⁶ Such
18 nanopores have been made in a top-down manner, e.g., electron beam sputtering,⁷⁻⁹
19 dielectric breakdown^{10,11} or electrochemical etching.¹² So far, there has been no report
20 about the precise control over the geometry of solid-state nanopores. Interestingly, a
21 unique property of hexagonal boron nitride (h-BN) few-layers has been revealed by
22 previous transmission electron microscopy (TEM) studies, where triangular defects or
23 nanopores can be created or enlarged while maintaining their intrinsic triangular
24 shape.¹³⁻¹⁵ However, there is no clear understanding about the intrinsic defects in
25 pristine single-layer h-BN, which has a significant influence on ion transport.
26
27

28
29
30
31
32
33
34
35 Ion transport through atomically pierced 2D membranes has drawn much attention.¹⁶
36 Understanding ion scattering inside nanopores is of vital importance to single molecule
37 resistive pulse sensing,¹⁷ however, it has been overlooked in the past. It is not clear if
38 continuum theories describing the ion flux in bulk can be directly applied to the systems
39 whose dimensions are comparable to the dimensions of ions.^{5, 18} Protein ion channels
40 have well-defined 3D geometries, which facilitate their biological functions.¹⁹ More
41 recently, single molecule DNA sequencing has been achieved using mutated protein
42 nanopores together with polymerase motor.²⁰ Later on, we demonstrated the first
43 example of identifying single-nucleotides in single-layer MoS₂ nanopores.²¹ However,
44 due to the lack of the control over the geometry of the nanopores formed in solid-state
45 materials, signal fluctuation stems from such a structural irregularity, which further
46 hinders the high-fidelity DNA sequencing. To design best performing nanopores in the
47 solid-state materials, one needs to gain fundamental understanding about how ions
48 transport through the channels having different geometries. Here, we report the first
49 experimental and theoretical results on such a crucial, yet overlooked phenomenon. We
50
51
52
53
54
55
56
57
58
59
60

1
2
3 observe a striking geometry-dependent ion scattering effect, which is further
4 corroborated by a modified ionic blockage model. This model complements the well-
5 acknowledged conductance models^{22, 23} describing the ions flux inside the nanopore
6 confinement by introducing a factor for the relative ion resistivity inside the pore. Our
7 findings shed lights on the rational design of 2D nanopores and should be applicable to
8 arbitrary nanopore shape. With this work, we provide possible roadmap, first
9 computationally to build optimal nanopore geometry, and later experimentally explore
10 the possibilities of building such a nanopore.
11
12

13
14
15
16
17 **Figure 1a** shows a schematic illustration of our nanopore device. Similarly to other
18 nanopores made of 2D material,^{1, 4} a single-layer of h-BN, grown by CVD (chemical
19 vapor deposition), is suspended over a small opening in a SiN_x membrane. The
20 transferred h-BN domains can be easily identified by optical microscopy (**Figure 1b**)
21 due to their characteristic triangular shape.^{24, 25} Further details on the growth, transfer,
22 and fabrication process can be found in **SI** and **Figure S1**. Interestingly, not only do the
23 h-BN domains (~10 μm side length) grow as triangular islands, but the atomic-scale
24 defects within the lattice also adopt a characteristic triangular shape. Such defects in
25 single-layer h-BN can be activated either by heating or by electron beam irradiation.²⁶
26
27 **Figure 1c** shows a high-resolution TEM (HRTEM) image of a typical triangular
28 nanopore in single-layer h-BN, with nitrogen (N)-terminated edges¹³⁻¹⁵ while **Figure**
29 **1d** illustrates the atomic arrangement of its defective h-BN lattice. The topological
30 rigidity of such defects is related to the selective removal of the atoms next to a vacancy
31 or at the edge of a large hole compared to the atoms in the pristine lattice. This
32 phenomenon has already been observed primarily by TEM under electron beam
33 irradiation. According to the previous TEM studies, two-coordinated N-atoms have a
34 much lower ejection probability than two-coordinated boron (B)-atoms, which results
35 in a zig-zag removal of atoms along the defect edge.¹⁵ Remarkably, during the entire
36 irradiation process, the pore shows a propensity to adapt a triangular shape which we
37 also observe and discuss later in more detail. In contrast, the MoS₂ nanopore adopts an
38 approximately circular geometry (**Figure 1e**), as schematically illustrated in **Figure 1f**,
39 since, in the MoS₂ lattice, there is a tendency towards random etching or knock-on
40 displacement of atoms under electron beam irradiation. From the energetic perspective,
41 the final geometry of such a formed MoS₂ nanopore will have a circular shape.
42 Interestingly, orientation preference of defects has not yet been observed for any 2D
43
44
45
46
47
48
49
50
51
52
53
54
55
56
57
58
59
60

1
2
3 materials other than h-BN, which makes this material a good candidate for nanopore
4 sensing. In order to understand the ionic flow profiles inside these two types of
5 nanopores with different symmetries, we use the method of moments (MoM)^{27, 28} to
6 calculate the total capacitance (C) of a triangular and circular conducting plate (the
7 details can be found in the **SI**). These calculations allow us to obtain the charge
8 distribution along the plate, where we observe that in the case of triangular nanopores
9 in h-BN, the edges, and especially the corners, display large variations in charge density
10 distribution (**Figure 1g**).

11
12 We utilized TEM to inspect further the nanoscopic features of single-layer h-BN and
13 MoS₂. To minimize the beam induced knock-on damage of the monolayer, we exploited
14 an aberration-corrected (with double Cs corrector) FEI Titan Themis TEM (60-300)
15 operated at either 80 kV or 60 kV acceleration voltage. For HRTEM imaging the
16 incident electron beam was monochromated in order to reduce the effects of chromatic
17 aberration, thereby improving contrast from light B and N atoms for adequate image
18 interpretation. The low-magnification image in **Figure S2a** shows a suspended area of
19 the h-BN covering a SiN_x aperture, where only a little trace of PMMA residue can be
20 seen. Special care should be taken when cleaning the PMMA in order to obtain
21 atomically resolved HRTEM imaging as well for high sensitivity nanopore sensing. A
22 HRTEM image of the h-BN lattice can be seen in **Figure 2a**, where the lattice is
23 represented by a white-atom contrast^{29, 30} that is directly related to actual atomic
24 positions. While the contrasts of B and N atoms are similar, they are distinguishable
25 under suitable imaging conditions. The inset shows the Fast Fourier Transform (FFT)
26 of this perfect lattice, confirming its crystalline structure with hexagonal symmetry.
27 Besides the first set of reflections, from which we can derive the h-BN lattice constant
28 of 2.5 Å, the second set of reflections corresponds to the 1.4 Å separation of B-N atoms.
29 **Figure S3** shows examples of HRTEM imaging of h-BN represented in black-atom
30 contrast, where instead the edge atom arrangement and point defects cannot be readily
31 interpreted. For comparison, an HRTEM image of the MoS₂ lattice is shown in **Figure**
32 **2b** with its corresponding FFT (inset), revealing the characteristics of the lattice in
33 reciprocal space.
34
35
36
37
38
39
40
41
42
43
44
45
46
47
48
49
50
51
52

53
54 As mentioned above, a unique feature of h-BN compared to other 2D materials
55 (graphene, MoS₂, etc.) is that its defects can maintain triangular shapes. **Figure 2c**
56 shows time-lapse frames (frames acquired with an exposure time of 0.1 s) depicting a
57
58
59
60

1
2
3 triangular h-BN nanopore evolving in size under electron beam irradiation (**Movie S1**).
4 This is supported by the TEM images in **Figure S2b**, where, after the chains of B and
5 N atoms are subsequently removed along the edges in a zig-zag manner, and the
6 triangular defect enlarges to a size greater than 10 nm in side length. Conversely, MoS₂
7 adopts a less regular, approximately circular shape during electron beam irradiation, as
8 shown in the time-lapse frames (/0.1 s) in **Figure 2d**. During the prolonged irradiation,
9 we observe another interesting behavior of h-BN, where adjacent small triangular
10 nanopores can merge to form a larger triangular nanopore as displayed in **Figure S2c**
11 and **Figure S2d**. This is due to the high mobility of the B and N atoms under electron
12 beam irradiation which favors their rearrangement into more stable configurations.
13 However, due to the fast dynamics of defect growth under electron beam exposure, it
14 is extremely challenging to visualize the pristine h-BN defects (i.e. defects present from
15 the growth stage/transfer). We therefore exploited specimen heating capability in TEM
16 in order to preserve the pristine nanopore geometry during imaging.³¹ As shown in
17 **Movie S2**, at high specimen temperature and during a longer observation time (2s), the
18 triangular defects do not show significant growth. In this way, we were able to verify
19 that the defects in as-transferred single-layer h-BN also adopt a triangular shape.
20 Moreover, we were able to measure the density of pristine h-BN defects by using a
21 MAADF (medium-angle annular dark-field)-scanning(S)TEM imaging condition (i.e.,
22 a low acceleration voltage of 60 kV and a low probe current of 30 pA) combined with
23 specimen heating, albeit with a tradeoff of reduced atomic contrast in the h-BN lattice
24 compared to the HRTEM imaging. As shown in **Figure S4**, we found a low defect
25 density (0.001 nm⁻²), which we believe comes inherently from the growth or the transfer
26 steps.
27

28
29
30
31
32
33
34
35
36
37
38
39
40
41
42
43
44 After TEM characterization, we focus on the use of h-BN as 2D membrane for nanopore
45 sensing. Current-voltage (IV) characteristics give direct feedback of the pore formation
46 and the related pore size. It is worth noting that a small hBN nanopore is quite stable
47 during experiments which can be seen in the example of sequential IV measurements
48 given in **Figure 2e**, resulting in 0.2 nm enlarging of the pore size during two hours.
49 Although these devices were not exposed to electron beam, we found that only 20% of
50 successfully transferred samples had the conductance <1nS which we consider as an
51 intact h-BN membrane. We assume that the rest 80% of the devices already had a
52 certain level of defect. From a large statistical dataset, we found a discrete trend in the
53
54
55
56
57
58
59
60

1
2
3 conductance spanning over a large range as shown in **Figure 2f**. Here, we only used the
4 first set of IV to calculate the initial open pore conductance. We can tentatively attribute
5 this discontinuity to certain energetically favorable sizes, which we do not observe in
6 other 2D nanopores. The major plateaus in the conductance distribution corresponds to
7 triangular defects in the h-BN lattice with different lengths. As shown in **Figure 2g**, we
8 assume that the triangular defect is N-terminated and possesses several unstable
9 dangling N atoms along the triangle edge marked by the dashed circles, giving rise to
10 minor modulations in the conductance. The partial removal along the N-terminated
11 edges can be seen in the **Figure 2h**.

12
13
14
15
16
17
18
19 In the case of a defect-free h-BN membrane, an electrochemical reaction (ECR)
20 method¹² (previously used for MoS₂ nanopore formation) is used to create a nanopore
21 in h-BN by applying trans-membrane voltage higher than the local threshold potential
22 to remove B and N atoms. **Figure S5a** shows a representative ECR current trace to
23 demonstrate the pore formation process, where a nanopore is formed at 3 V. The pore
24 growth manifests itself in a continuous increase in the ionic current. Due to the
25 relatively high ECR threshold voltage of 3 V it is challenging to observe single atom
26 nanopore opening as recently reported for MoS₂.¹² The threshold bias observed here in
27 the liquid/solid junction is in good agreement with a previous STM study.³² **Figure S5b**
28 shows the IV characteristics of this device before and after the ECR process with a clear
29 transition from an insulating, pore-free h-BN membrane to a porous h-BN membrane
30 containing a single nanopore. In this work we focus on the effects that a well-defined
31 nanopore geometry has on the conductance and biomolecular sensing, therefore, we do
32 not use any ECR-formed nanopores as we cannot directly assess the resulting pore
33 geometry.

34
35
36
37
38
39
40
41
42
43
44
45
46
47
48
49
50
51
52
53
54
55
56
57
58
59
60 In order to test the sensing capability of a triangular h-BN nanopore, we used a device
already having a 48 nS open pore conductance in 1M KCl. We injected 1k bp dsDNA
into the *cis*-side of the flowcell and applied positive potential on the *trans*-side to drag
the negatively charged DNA passing through the pore. As expected, transient blockages
are observed in short experiment time (**Figure 3a**). The power density spectrum (PSD)
in **Figure3b** exhibits a similar noise performance compared to MoS₂ nanopores. RMS
noise is ~ 35 pA at 10k lowpass filtering, which is comparable to MoS₂ nanopores.^{12,33}
The major contribution is low frequency 1/f noise,³⁴ which can be reduced significantly
by shrinking the region of suspended h-BN to a circular aperture with a diameter of 50

1
2
3 nm. In this way, we obtain a very good signal to noise ratio (SNR) which is up to 20.
4 **Figure 3c** shows a scatter plot of translocation events recorded at 400 mV with some
5 representative events selected displayed in **Figure 3d**. As can be observed in **Figure**
6 **S6**, the amplitudes are proportional to applied bias, indicating a voltage-driven process.
7
8 Quantitatively, 0.47 ± 0.18 nA, 0.67 ± 0.21 nA and 1.03 ± 0.34 nA are found for 200
9 mV, 300 mV and 400 mV, respectively. Moreover, while the amplitude at each voltage
10 displays unimodal distribution, the dwell time shows bimodal distribution. The first
11 distribution which is in the fast translocation regime is consistent with a free
12 translocation time for 1k bp length DNA, which is in the range of ~ 100 μ s. Interestingly,
13 the second distribution in the slow translocation regime is in the range of 5-100 ms,
14 indicating that a retardation mechanism governs the translocation dynamics. In the
15 previous reports, slow translocations are in the long tail of the dwell time distribution.³⁵⁻
16
17 ³⁷ Here, we suggest a geometrical retardation mechanism stemming from the unique
18 triangular shape of h-BN nanopores. As sketched in **Figure 3e**, we suggest that the
19 movement along the vertical axis and off-axis movement are responsible for fast
20 translocation and slow translocation, respectively. It is easy to understand that a
21 translocated DNA molecule experiences high steric hindrance when it moves off-
22 centered which could be the major reason for the observed large population of slow
23 translocation events. In larger h-BN nanopores, we observe significantly fewer slow
24 translocations.
25
26

27
28 To further explore the origin of the fast and slow translocation, we performed molecular
29 dynamics simulations of a dsDNA molecule translocating^{38, 39} through a BN nanopore
30 along the on-axis (left) and off-axis (right) paths, respectively. For this purpose, a
31 mathematical boundary perpendicular to the BN sheet was applied to constrain the
32 lateral movement of the DNA around the BN sheet plane (**Figure 4a**). It was found that
33 the DNA permeates through the pore along the vertical axis much faster than off-axis
34 in good agreement with our above speculation (**Figure 4b**). Further analysis suggests
35 that the slow off-axis translocation is the consequence of the strong interaction between
36 the h-BN pore edge and the dsDNA (**Figure 4c**). The nature of these interactions
37 between the DNA and triangular h-BN nanopore is due to van-der Waal's and
38 electrostatic forces, which are taken into account in the Force Field parameters of the
39 MD simulations. This is further outlined in section 6 of the SI.
40
41
42
43
44
45
46
47
48
49
50
51
52
53
54
55
56
57
58
59
60

1
2
3 Another striking finding is that the observed current blockages in h-BN are consistently
4 lower than the values in MoS₂ nanopores with comparable open pore conductance. To
5 obtain more detailed information about the impact of nanopore size and geometry on
6 the conductance, we decided to use dsDNA as a molecular ruler. For each experimental
7 DNA translocation data set, we plotted the $\Delta G_{relative}$ vs. G_{open} where $\Delta G_{relative}$ is a relative
8 conductance drop given by: $(G_{open} - G_{blocked})/ G_{open}$ while G_{open} and $G_{blocked}$ are the
9 conductances for an open pore and pore blocked by DNA, respectively. Because of
10 notable spreading of translocation data, we defined different event clusters by using
11 Gaussian Mixture Distribution fitting where each cluster is represented with a single
12 center point and a standard deviation in x and y. More information can be found in the
13 **SI** and in **Figure S8**. The resulting data was then used to develop a conductance model
14 which provides more insights into the ionic and DNA transport through triangular
15 nanopores.
16

17
18 The well-acknowledged conductance model^{22, 23} that describes the passage of ions
19 through the nanopore includes two terms, which are the channel resistance (the
20 nanopore itself) and the access resistance⁴⁰ (the vicinity of the nanopore). Surfaces
21 charges of h-BN and MoS₂ are similar, and play a significant role at low ionic strength
22 (10mM).⁴¹ In this work we focus on the geometrical effect, therefore we tried to
23 minimize the surface charge influence by using a solution of high ionic strength (1M).
24 Equation 1 gives the analytic expression of this model, where σ , L , and d are the ionic
25 conductivity of the solution (10.5 S/m for 1M KCl at 23 °C),²³ the effective membrane
26 thickness (1.6 nm and 1.4 nm for MoS₂ and h-BN, respectively, accounting for the
27 hydrodynamic effect),^{4, 42} and the equivalent nanopore diameter for a perfect circle,
28 respectively.
29

$$G = \sigma_{bulk} \left[\frac{4L}{\pi d^2} + \frac{1}{d} \right]^{-1} \quad (1)$$

30
31 This model assumes that the ion mobility inside the nanopore is identical to the bulk
32 mobility without restraint. For typical circular-shaped nanopores, the channel effect and
33 the access effect are equally dominant due to the perfect symmetry of the circular shape.
34 However, a triangular h-BN nanopore has three-fold symmetry, giving rise to a non-
35 uniformity in the ion distribution inside and in the vicinity of the nanopore. This
36 distribution of the ion flux within the pore for different pore shapes, studied using MD
37 simulations, is outlined in section 6 of the **SI**. It is worth noting that few reports have
38
39
40
41
42
43
44
45
46
47
48
49
50
51
52
53
54
55
56
57
58
59
60

discussed geometrical effects due to the difficulty in the fabrication methods.^{43, 44} The modifications of the conductance model are mainly based on the z-axis variation perpendicular to the nanopore plane. In our case, two important factors should be reconsidered due to geometry or symmetry breaking, which are the calculation of the capacitance determined by the spatial charge density distribution and the relative ion conductivity inside the nanopore. Both factors are highly dependent on the geometry. Here, we can make two mutually exclusive assumptions, one where the intrinsic pore resistance is dominant and the other where, conversely, the access resistance dominates. Both models have only a single unknown parameter, while all other parameters can be obtained unambiguously. We first discuss a triangular (equilateral) pore, for which the expressions for the pore and access resistances are given by $R_{pore} = \rho_{pore} 4L/\sqrt{3}a^2$ and $R_{access} = \rho_{access} \varepsilon/C_{\Delta}$, respectively, where L is the hydrodynamic thickness of h-BN membrane, a is the edge length of the triangular pore, ε is the permittivity in free space and C_{Δ} is the capacitance of the triangular plate (details of the calculations are available in **the SI**). ρ_{pore} and ρ_{access} are the resistivity of the pore and the access resistivity, respectively, which we assume are different. Indeed, ρ_{pore} varies from one pore shape to another depending on the scattering of ions by the pore edges and corners. These edge effects contribute to a higher intrinsic resistivity due to the pore shape. Hence, we can relate the intrinsic pore resistivity to the access resistivity through a single factor α_{pore} which leads us to equation:

$$G = \sigma_{bulk} \left[\frac{1}{\alpha_{pore}} \frac{4L}{\sqrt{3}a^2} + \frac{2\varepsilon}{C_{\Delta}} \right]^{-1} \quad (2)$$

For the access resistance dominant model, namely “pseudo circular model”, we use a prefactor k to encompass all the information including pore shape, edges and scattering effects.

$$G = \sigma_{bulk} \left[\frac{4L}{\sqrt{3}a^2} + \frac{k}{a} \right]^{-1} \quad (3)$$

As shown in **Figure 5a**, the α model produces the best fits (referred to section 8 in the **SI**) to experimental h-BN data. According to the minimal root-mean-square-error (*RMSE*) criteria the best fitting is obtained with $\alpha_{pore} = 0.3$, while the $\alpha_{pore} = 0.15$ gives an excellent agreement for the low $\Delta G_{relative}$ data points except for the highest point at the low G_{open} . The small value of α_{pore} translates into a high intrinsic resistivity of ions

1
2
3 inside the nanopore, which may originate from either low ion concentration, or low ion
4 mobility inside the pore, or both. A more sophisticated approach¹⁸ is required to address
5 this. The strong discrepancy with the classic model (eq1) reveals a very interesting
6 nanoscopic shaping of the ion flux inside a triangular nanopore. The pseudo circular k
7 model fits data less well (higher $RMSE$, referred to section 8 in the SI), while still being
8 able to give a prefactor k of 2.5, as shown in **Figure S9a**.
9

10
11
12
13
14 In contrast, pseudo circular k model fits the MoS₂ data slightly better than the α model,
15 shown in **Figure S9b**. We obtained lower k value (1.1) then in the h-BN case, which
16 shows that the classic model still holds for approximately circular MoS₂ nanopores.
17 MoS₂ data points look more dispersed comparing to h-BN dataset, which could be
18 possibly due to several uncontrollable factors e.g. deviation from the perfect circular
19 geometry (which would also affect the surface charges in the pore mouth), or locally
20 increased L thickness due to PMMA residues. Therefore we also show the α model
21 fittings that fit better for certain data points. A small discrepancy is observed if using
22 the modified models, which explains the lack of the knowledge of the overestimated
23 ion conductivity inside the pore.⁴⁵ Compared to the small α_{pore} value in h-BN, ions have
24 much higher permeability through MoS₂ nanopores, that is clearly visible for the MoS₂
25 points fitted with $\alpha_{pore} = 0.8$ which is close to the bulk value. In other words, the channel
26 resistance plays a major role in sensing molecules in the case of h-BN nanopores,
27 however it results in a smaller total conductance drop. We also examined the
28 underestimated side length a of the triangular hBN nanopore (**Figure 5b**), which
29 strongly depends on α_{pore} . As we already mentioned, the cleanness of the 2D material
30 is of high importance since the polymer residues can locally affect the thickness and
31 morphology of the pore vicinity and thus influence the conductance and DNA - pore
32 interaction. We tried to avoid this issue by rigorous cleaning procedure of h-BN and
33 MoS₂ after the transfer, however, in order to have clean polymer-free membranes the
34 best would be to grow 2D material directly over the SiN_x opening as it has been
35 previously shown.³³
36
37
38
39
40
41
42
43
44
45
46
47
48
49

50
51 To test if we can exploit the confined geometry of h-BN nanopore to control the
52 entering of molecules into the nanopore, we perform homopolymer translocation
53 through a small 2.5 nm (side length) h-BN nanopore. To our surprise, we observe
54 sufficient events to make statistics without using viscous medium.²¹ **Figure 6a** shows
55 representative traces of polyA₃₀ and polyC₃₀ translocations. Statistically, we are able to
56
57
58
59
60

1
2
3 differentiate their chemical identities by current drop during translocation, shown in
4 **Figure 6b**. Due to the limited bandwidth of the Axopatch current amplifier (100 k Hz),
5 we speculate that detectable events originate from even more pronounced DNA-pore
6 interaction due to the off-axis movement of short ssDNA molecules through the h-BN
7 nanopore. At the same experimental conditions (pore size and ionic strength),
8 translocations of such short ssDNA cannot be detected in MoS₂ nanopores without
9 employing a viscous medium.
10

11
12
13
14
15 Top-down engineering of well-defined (in terms of size distributions, defects density
16 and geometry) defects in 2D materials has a significant role in large scale
17 nanoelectronics and various applications (biosensing,^{21, 46, 47} desalination⁴⁸ or osmotic
18 power generation,⁴⁹ etc.). Here we demonstrate the first example, to the best of our
19 knowledge, of geometry-dependent ion scattering and therefore single-molecule
20 nanopore biosensing. Owing to the well-defined triangular defects in single-layer h-BN,
21 we tried to provide valuable insights of the ion transport through such geometry
22 experimentally and theoretically. Furthermore, we build a better understanding of the
23 roles of access region and channel region in single-molecule sensing on the basis of a
24 modified conductance model with one fitting parameter α_{pore} , namely, the relative ion
25 resistivity inside the nanopore. This model reveals an anomalous process when the
26 dimensions of the nanopores are reduced to the atomic scale. To design nanopores in
27 2D materials in a rational way, one should understand the geometrical effect of the
28 nanopore shape on the ion flux. DNA translocation through MoS₂ nanopores exhibits
29 an access resistance dominant process, while DNA translocation through hBN
30 nanopores exhibits a channel resistance dominant process. DNA induced conductance
31 drop (ΔG) in MoS₂ nanopores is superior to that in h-BN nanopores, due to the high ion
32 flux through MoS₂ nanopores. The role of ions in revealing the chemical identities of
33 DNA, i.e, DNA sequencing,^{17, 19} is not completely clear. Further study is required to
34 understand the fundamentals of ionic blockage-based DNA nanopore sequencing.
35
36
37
38
39
40
41
42
43
44
45
46
47
48
49
50
51

52 Methods and any associated references are available in the **SI**.

53
54
55 ASSOCIATED CONTENT
56
57
58
59
60

1
2
3 The Supporting Information is available free of charge on the ACS Publications website
4 at DOI:
5
6

7 Additional information on experimental details (CVD growth, transfer and nanofluidic
8 setup), complementary TEM observations, detailed mathematical calculations and MD
9 simulations. SI movie 1 shows the formation of a triangular h-BN nanopore under
10 irradiation. SI movie 2 shows the stability of a triangular h-BN nanopore under heat.
11
12
13
14
15
16
17
18

19 AUTHOR INFORMATION

21 **Corresponding Author**

22
23
24 ke.liu@epfl.ch Tel: [+41 21 693 1163](tel:+41216931163)
25 aleksandra.radenovic@epfl.ch Tel: [+41 21 693 7371](tel:+41216937371) Fax: [+41 21 693 7380](tel:+41216937380)
26
27
28
29

30 **Present Addresses**

31
32 † State Key Laboratory of Mechanics and Control of Mechanical Structures, Nanjing
33 University of Aeronautics and Astronautics, Nanjing 210016, China
34
35
36
37

38 **Author Contributions**

39
40 K.L., M. L., and A.R. conceived the idea of comparing geometrical effects in 2D
41 nanopores, designed experiments, proposed modifying the conductance model, and
42 wrote the manuscript. K.L. and M.L. fabricated the nanopore device, performed
43 measurements and data analysis. Q.H. performed molecular dynamics under J.P.L's
44 supervision. A.S. and J.P.L proposed the new model for the size effects and roughness
45 in the nanopore conductance, and computed rigorously the nanopore self-capacitance
46 to determine the access resistance. S.C. conceived the idea of using triangular hBN
47 nanopores, initiated the collaboration, participated at the early stage of the research and
48 performed CVD h-BN growth under S.H.'s supervision. Du.D. performed CVD MoS₂
49 growth under A.K.'s supervision. Da.D., V.T., and D.T.L.A performed HRTEM
50
51
52
53
54
55
56
57
58
59
60

1
2
3 imaging. All authors provided constructive comments on the manuscript. K.L. and M.L.
4 contributed equally to this work.
5
6
7
8
9

10 Notes

11
12 The authors declare no competing financial interest.

13
14 During the final preparation of the manuscript, we have noticed that a manuscript with
15 similar concept but only TEM results appeared on arxiv online repository.

16 (<https://arxiv.org/ftp/arxiv/papers/1702/1702.01220.pdf>).
17
18
19

20 ACKNOWLEDGMENT

21
22 This work was financially supported by the European Research Council (grant 259398,
23 PorABEL), by a Swiss National Science Foundation (SNSF) Consolidator grant
24 (BIONIC BSCGI0_157802), by SNSF Sinergia grant 147607. We thank the Centre
25 Interdisciplinaire de Microscopie Electronique (CIME) at the École Polytechnique
26 fédérale de Lausanne (EPFL) for access to electron microscopes. Device fabrication
27 was partially carried out at the EPFL Center for Micro/Nanotechnology (CMi). Special
28 thanks to Ms. Anna Carlsson from FEI for the help in HRTEM imaging. The authors
29 would like to thank Ulrich Keyser and Michael Walker for their helpful and
30 constructive comments that greatly contributed to improving the quality of the paper.
31 The work performed in Cambridge was supported by the EPSRC Cambridge NanoDTC,
32 EP/L015978/1. The work performed in UIUC was supported by grants from Oxford
33 Nanopore Technology and the Seeding Novel Interdisciplinary Research Program of
34 the Beckman Institute. The UIUC authors gratefully acknowledge also supercomputer
35 time provided through the Extreme Science and Engineering Discovery Environment
36 (XSEDE) grant MCA93S028 and by the University of Illinois at Urbana-Champaign
37 on the TAUB cluster.
38
39
40
41
42
43
44
45
46
47
48
49
50
51
52
53
54
55
56
57
58
59
60

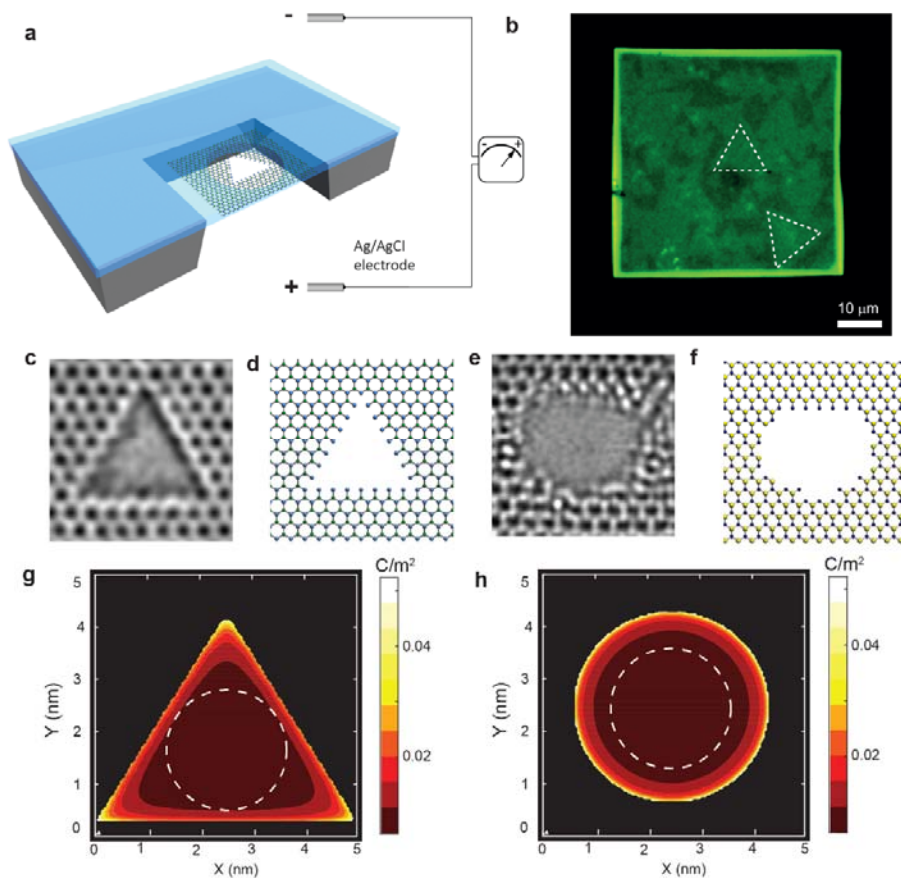


Figure 1. a) A schematic illustration of a triangular h-BN nanopore membrane, where single-layer h-BN is suspended over an aperture in the SiN_x membrane. The device is mounted between two reservoirs filled with saline solution connected to a current amplifier to apply transmembrane bias across the membrane. **b)** A bright-field optical image of as-transferred single-layer h-BN over the supporting SiN membrane. Although the observed optical contrast is weak, one can still identify the presence of μm -sized triangular h-BN single layer crystals. **c)** HRTEM image (taken at 80 kV and with the sample at 400 °C) of a triangular h-BN nanopore with white-atom contrast, where atoms are represented by bright spots in a honeycomb-like arrangement. **d)** 2D lattice representation of the nanopore in single-layer h-BN, where B atoms are green and N atoms are grey. The nanopore is terminated by N-atoms. **e)** HRTEM image (taken at 80 kV and with the sample at 400 °C) of an approximately circular MoS₂ nanopore with white-atom contrast, where atoms are represented by bright spots in a honeycomb like arrangement. **f)** Corresponding lattice representation of single-layer MoS₂, where Mo atoms are

1
2
3 purple, and S atoms are yellow. The nanopore is terminated by Mo-atoms. **g)** and **h)** Contour
4
5 plots of the charge density distribution along the triangular plate and the circular plate,
6
7 respectively. Both plates have the same area. The area occupied by dsDNA with a diameter of
8
9 2.4 nm is shown by the dashed circle in **g)** and **h)**.
10
11
12
13
14
15
16
17
18
19
20
21
22
23
24
25
26
27
28
29
30
31
32
33
34
35
36
37
38
39
40
41
42
43
44
45
46
47
48
49
50
51
52
53
54
55
56
57
58
59
60

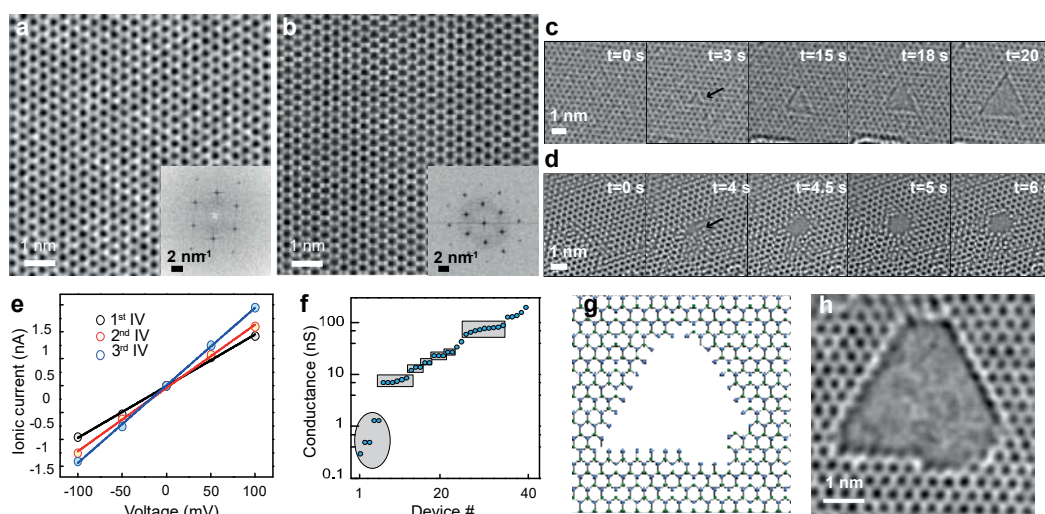


Figure 2. **a)** HRTEM image of pristine h-BN lattice. Inset: diffractogram corresponding to the area in **a)**, with a secondary set of diffraction spots visible. **b)** HRTEM image of pristine MoS₂ lattice of the same size as in **a)**, 8 nm × 8 nm. Inset: corresponding diffractogram with second and third order reflections clearly visible. **c)** Time-lapse HRTEM images of a triangular h-BN nanopore evolving in size while still maintaining its triangular shape. The elapsed time is marked on each image. **d)** Time-lapse HRTEM images of an approximately circular MoS₂ nanopore evolving in size. The elapsed time is marked on each image. **e)** Consecutive IVs in a small h-BN nanopore showing gradual growth. **f)** Initial conductances measured in 1 M KCl of all working devices in the study. **g)** Illustration of partial removal of atoms along the N-terminated edge of an h-BN nanopore. **h)** HRTEM image corresponding to the sketch in **g)**. All the TEM images were taken at 80 kV and with the sample at 400 °C except in **c)** and **d)** which were taken at 80 kV and with the sample at room temperature.

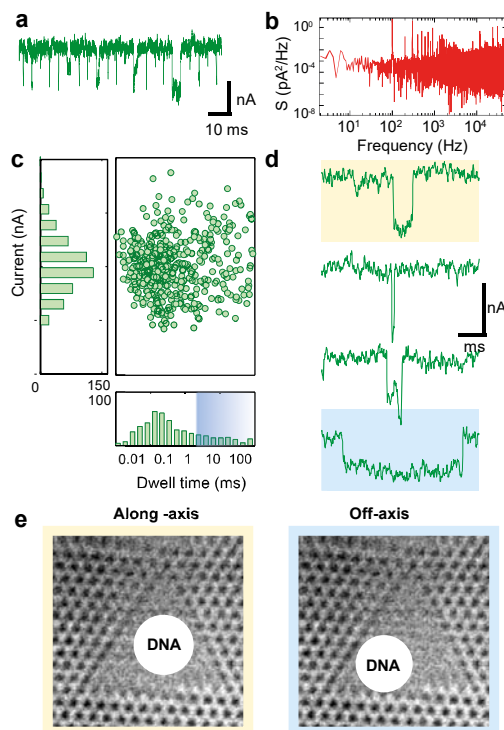


Figure 3. **a)** A current trace of concatenated events in an h-BN nanopore with a 48 nS open pore conductance in 1 M KCl. The event detection is performed using an open source OpenNanopore software. **b)** Power density spectrum (PSD) of a short fragment of open pore current trace that depicts the frequency dependent noise performance of the device. The trace is recorded at 0 mV with ionic strength of 1 M KCl. RMS noise is ~ 35 pA at 10k lowpass filtering. **c)** Scatter plot of current drop versus dwell time of detected events at 400 mV. **d)** Representative events showing linearized smooth translocation, folded fast translocation, partially folded translocation and retarded translocation, respectively. **e)** Plausible explanations for retarded translocation due to sterically hindered DNA motion by the pore geometry.

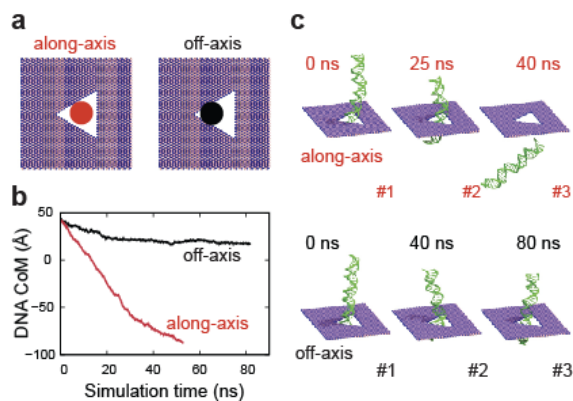


Figure 4. Molecular dynamics simulations of a dsDNA molecule translocating through an h-BN nanopore. **a)** Two mathematical boundaries perpendicular to the h-BN sheet were applied in our MD simulations to ensure the DNA movement through the pore along the along-axis (left) and off-axis (right) paths, respectively. **b)** Change of the center of the mass (CoM) of the DNA molecule with respect to simulation time. **c)** Snapshots taken from MD simulations of the along-axis (top) and off-axis (bottom) DNA translocation through the h-BN nanopore.

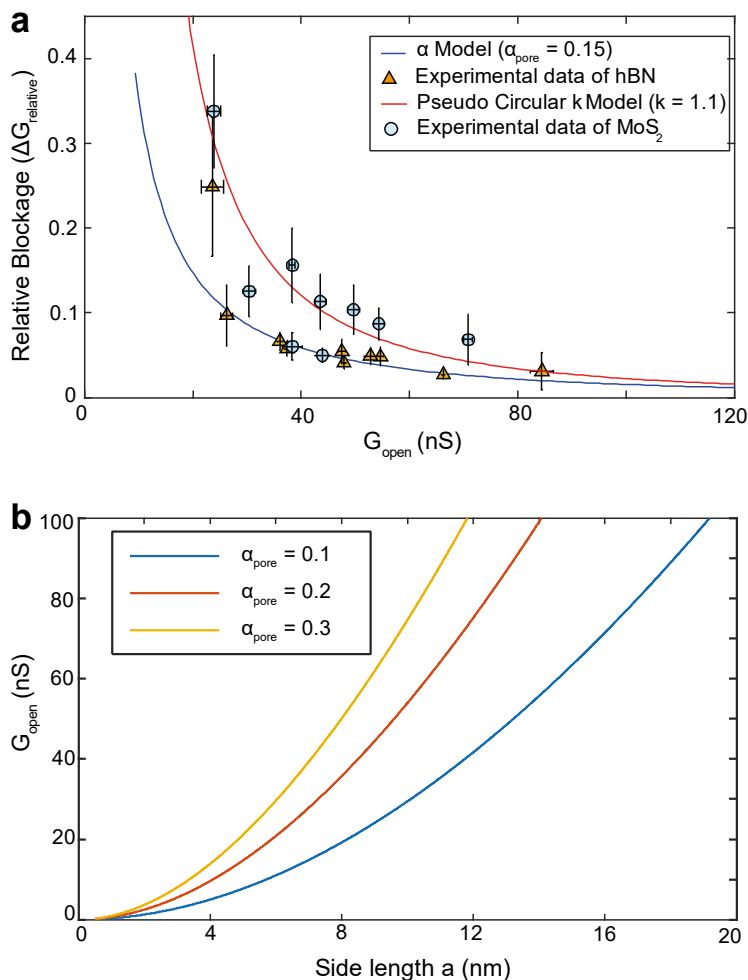


Figure 5. a) Comparison of best-fitting theoretical models with experimental data. h-BN experimental data is best fit to α model, where α_{pore} is the proportional factor of ion conductivity inside the pore. MoS₂ experimental data is best fit to Pseudo Circular k model, where k is the corrected factor for the access resistance. More details are in the SI section 8. All translocation data were taken using dsDNA (1k bp, 5k bp and 48k bp). **b)** Dependence of calculated side length a of the triangular hBN nanopore on α_{pore} .

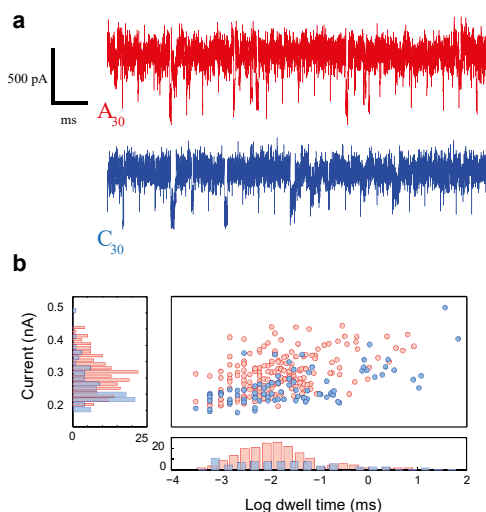


Figure 6. a) Homopolymer translocation in a small h-BN nanopore. PolyA₃₀ shown in red and polyC₃₀ in blue. **b)** Scatter plot of polyA₃₀ and polyC₃₀ events.

References

- (1) Garaj, S.; Hubbard, W.; Reina, A.; Kong, J.; Branton, D.; Golovchenko, J. A. *Nature* **2010**, 467, 190-193.
- (2) Merchant, C. A.; Healy, K.; Wanunu, M.; Ray, V.; Peterman, N.; Bartel, J.; Fischbein, M. D.; Venta, K.; Luo, Z. T.; Johnson, A. T. C.; Drndic, M. *Nano Lett.* **2010**, 10, 2915-2921.
- (3) Schneider, G. F.; Kowalczyk, S. W.; Calado, V. E.; Pandraud, G.; Zandbergen, H. W.; Vandersypen, L. M. K.; Dekker, C. *Nano Lett.* **2010**, 10, 3163-3167.
- (4) Liu, K.; Feng, J. D.; Kis, A.; Radenovic, A. *ACS Nano* **2014**, 8, 2504-2511.
- (5) Feng, J. D.; Liu, K.; Graf, M.; Dumcenco, D.; Kis, A.; Di Ventra, M.; Radenovic, A. *Nat. Mater.* **2016**, 15, 850-855.
- (6) Gracheva, M. E.; Xiong, A. L.; Aksimentiev, A.; Schulten, K.; Timp, G.; Leburton, J. P. *Nanotechnology* **2006**, 17, 622-633.
- (7) Li, J.; Stein, D.; McMullan, C.; Branton, D.; Aziz, M. J.; Golovchenko, J. A. *Nature* **2001**, 412, 166-169.
- (8) Storm, A. J.; Chen, J. H.; Ling, X. S.; Zandbergen, H. W.; Dekker, C. *Nat. Mater.* **2003**, 2, 537-540.
- (9) Kim, M. J.; Wanunu, M.; Bell, D. C.; Meller, A. *Adv. Mater.* **2006**, 18, 3149-3153.
- (10) Kwok, H.; Briggs, K.; Tabard-Cossa, V. *Plos One* **2014**, 9.
- (11) Kuan, A. T.; Lu, B.; Xie, P.; Szalay, T.; Golovchenko, J. A. *Appl. Phys. Lett.* **2015**, 106, 203109
- (12) Feng, J.; Liu, K.; Graf, M.; Lihter, M.; Bulushev, R. D.; Dumcenco, D.; Alexander, D. T. L.; Krasnozhan, D.; Vuletic, T.; Kis, A.; Radenovic, A. *Nano Lett.* **2015**, 15, 3431-3438.
- (13) Alem, N.; Erni, R.; Kisielowski, C.; Rossell, M. D.; Gannett, W.; Zettl, A. *Phys. Rev. B* **2009**, 80, 155425.
- (14) Jin, C. H.; Lin, F.; Suenaga, K.; Iijima, S. *Phys. Rev. Lett.* **2009**, 102, 195505.

- 1
2
3 (15) Meyer, J. C.; Chuvilin, A.; Algara-Siller, G.; Biskupek, J.; Kaiser, U. *Nano Lett.* **2009**, *9*,
4 2683-2689.
5 (16) Hu, S.; Lozada-Hidalgo, M.; Wang, F. C.; Mishchenko, A.; Schedin, F.; Nair, R. R.; Hill, E.
6 W.; Boukhvalov, D. W.; Katsnelson, M. I.; Dryfe, R. A. W.; Grigorieva, I. V.; Wu, H. A.; Geim, A.
7 K. *Nature* **2014**, *516*, 227-230.
8 (17) Wanunu, M. *Physics of Life Reviews* **2012**, *9*, 125-158.
9 (18) Aguilera-Arzo, M.; Aguilera, V. M.; Eisenberg, R. S. *Eur. Biophys. J.* **2005**, *34*, 314-322.
10 (19) Branton, D.; Deamer, D. W.; Marziali, A.; Bayley, H.; Benner, S. A.; Butler, T.; Di Ventra,
11 M.; Garaj, S.; Hibbs, A.; Huang, X. H.; Jovanovich, S. B.; Krstic, P. S.; Lindsay, S.; Ling, X. S. S.;
12 Mastrangelo, C. H.; Meller, A.; Oliver, J. S.; Pershin, Y. V.; Ramsey, J. M.; Riehn, R.; Soni, G. V.;
13 Tabard-Cossa, V.; Wanunu, M.; Wiggin, M.; Schloss, J. A. *Nat. Biotechnol.* **2008**, *26*, 1146-1153.
14 (20) Manrao, E. A.; Derrington, I. M.; Laszlo, A. H.; Langford, K. W.; Hopper, M. K.; Gillgren,
15 N.; Pavlenok, M.; Niederweis, M.; Gundlach, J. H. *Nat. Biotechnol.* **2012**, *30*, 349-353.
16 (21) Feng, J. D.; Liu, K.; Bulushev, R. D.; Khlybov, S.; Dumcenco, D.; Kis, A.; Radenovic, A.
17 *Nat. Nanotechnol.* **2015**, *10*, 1070-1076.
18 (22) Wanunu, M.; Dadosh, T.; Ray, V.; Jin, J. M.; McReynolds, L.; Drndic, M. *Nat.*
19 *Nanotechnol.* **2010**, *5*, 807-814.
20 (23) Kowalczyk, S. W.; Grosberg, A. Y.; Rabin, Y.; Dekker, C. *Nanotechnology* **2011**, *22*,
21 315101.
22 (24) Caneva, S.; Weatherup, R. S.; Bayer, B. C.; Brennan, B.; Spencer, S. J.; Mingard, K.;
23 Cabrero-Vilatela, A.; Baehtz, C.; Pollard, A. J.; Hofmann, S. *Nano Lett.* **2015**, *15*, 1867-1875.
24 (25) Caneva, S.; Weatherup, R. S.; Bayer, B. C.; Blume, R.; Cabrero-Vilatela, A.; Braeuninger-
25 Weirner, P.; Martin, M. B.; Wang, R. Z.; Baehtz, C.; Schloegl, R.; Meyer, J. C.; Hofmann, S. *Nano*
26 *Lett.* **2016**, *16*, 1250-1261.
27 (26) Tran, T. T.; Elbadawi, C.; Totonjian, D.; Lobo, C. J.; Grosso, G.; Moon, H.; Englund, D.
28 R.; Ford, M. J.; Aharonovich, I.; Toth, M. *ACS Nano* **2016**, *10*, 7331-7338.
29 (27) Harrington, R. F. *J. Electromagnetic Wave.* **1987**, *1*, 181-200.
30 (28) Newman, E. H. *IEEE Trans. Educ.* **1988**, *31*, 193-200.
31 (29) Ryu, G. H.; Park, H. J.; Ryou, J.; Park, J.; Lee, J.; Kim, G.; Shin, H. S.; Bielawski, C. W.;
32 Ruoff, R. S.; Hong, S.; Lee, Z. *Nanoscale* **2015**, *7*, 10600-10605.
33 (30) Elbadawi, C.; Tran, T. T.; Kolibal, M.; Sikola, T.; Scott, J.; Cai, Q. R.; Li, L. H.; Taniguchi,
34 T.; Watanabe, K.; Toth, M.; Aharonovich, I.; Lobo, C. *Nanoscale* **2016**, *8*, 16182-16186.
35 (31) Pham, T.; Gibb, A. L.; Li, Z. L.; Gilbert, S. M.; Song, C. Y.; Louie, S. G.; Zettl, A. *Nano Lett.*
36 **2016**, *16*, 7142-7147.
37 (32) Wong, D.; Velasco, J.; Ju, L.; Lee, J.; Kahn, S.; Tsai, H. Z.; Germany, C.; Taniguchi, T.;
38 Watanabe, K.; Zettl, A.; Wang, F.; Crommie, M. F. *Nat. Nanotechnol.* **2015**, *10*, 949-953.
39 (33) Waduge, P.; Bilgin, I.; Larkin, J.; Henley, R. Y.; Goodfellow, K.; Graham, A. C.; Bell, D.
40 C.; Vamivakas, N.; Kar, S.; Wanunu, M. *ACS Nano* **2015**, *9*, 7352-7359.
41 (34) Heerema, S. J.; Schneider, G. F.; Rozemuller, M.; Vicarelli, L.; Zandbergen, H. W.;
42 Dekker, C. *Nanotechnology* **2015**, *26*, 074001.
43 (35) Wanunu, M.; Sutin, J.; McNally, B.; Chow, A.; Meller, A. *Biophys. J.* **2008**, *95*, 4716-
44 4725.
45 (36) Mirsaidov, U.; Comer, J.; Dimitrov, V.; Aksimentiev, A.; Timp, G. *Nanotechnology* **2010**,
46 *21*, 395501.
47 (37) Venta, K.; Shemer, G.; Puster, M.; Rodriguez-Manzo, J. A.; Balan, A.; Rosenstein, J. K.;
48 Shepard, K.; Drndic, M. *ACS Nano* **2013**, *7*, 4629-4636.
49 (38) Sathe, C.; Zou, X. Q.; Leburton, J. P.; Schulten, K. *ACS Nano* **2011**, *5*, 8842-8851.
50 (39) Qiu, H.; Sarathy, A.; Leburton, J. P.; Schulten, K. *Nano Lett.* **2015**, *15*, 8322-8330.
51 (40) Hall, J. E. *J. Gen. Physiol.* **1975**, *66*, 531-532.
52 (41) Smeets, R. M. M.; Keyser, U. F.; Krapf, D.; Wu, M. Y.; Dekker, N. H.; Dekker, C. *Nano*
53 *Lett.* **2006**, *6*, 89-95.
54
55
56
57
58
59
60

- 1
2
3 (42) Park, K. B.; Kim, H. J.; Kim, H. M.; Han, S. A.; Lee, K. H.; Kim, S. W.; Kim, K. B. *Nanoscale*
4 **2016**, 8, 5755-5763.
5 (43) Steinbock, L. J.; Bulushev, R. D.; Krishnan, S.; Raillon, C.; Radenovic, A. *ACS Nano* **2013**,
6 7, 11255-11262.
7 (44) Rollings, R.; Graef, E.; Walsh, N.; Nandivada, S.; Benamara, M.; Li, J. *Nanotechnology*
8 **2015**, 26, 044001.
9 (45) Suk, M. E.; Aluru, N. R. *J. Chem. Phys.* **2014**, 140, 084707.
10 (46) Girdhar, A.; Sathe, C.; Schulten, K.; Leburton, J. P. *Proc. Natl. Acad. Sci. U. S. A.* **2013**,
11 110, 16748-16753.
12 (47) Qiu, H.; Sarathy, A.; Schulten, K.; Leburton, J.-P. *npj 2D Materials and Applications*
13 **2017**, 1, 3.
14 (48) Heiranian, M.; Farimani, A. B.; Aluru, N. R. *Nat. Commun.* **2015**, 6, 8616.
15 (49) Feng, J. D.; Graf, M.; Liu, K.; Ovchinnikov, D.; Dumcenco, D.; Heiranian, M.; Nandigana,
16 V.; Aluru, N. R.; Kis, A.; Radenovic, A. *Nature* **2016**, 536, 197-200.
17
18
19

20
21 FOR TABLE OF CONTENTS ONLY
22

