



Universitat Autònoma de Barcelona

Documents de Treball

**SUPERSTARS NEED SOCIAL BENEFITS: AN
EXPERIMENT ON NETWORK FORMATION**

Arthur Schram, Boris van Leeuwen i Theo Offerman

Document de Treball núm.13/6

Departament d'Empresa

© Arthur Schram, Boris van Leeuwen i Theo Offerman
Coordinador / Coordinator *Documents de treball*:

David Urbano
<http://www.uab.cat/departament/empresa>
e-mail: david.urbano@uab.es
Telèfon / Phone: +34 93 5814298
Fax: +34 93 5812555

Edita / Publisher:

Departament d'Empresa
<http://www.uab.cat/departament/empresa>
Universitat Autònoma de Barcelona
Facultat d'Economia i Empresa
Edifici B
08193 Bellaterra (Cerdanyola del Vallès), Spain
Tel. 93 5811209
Fax 93 5812555

ISSN:
1988-7736. Documents de Treball (Departament d'Empresa, Universitat Autònoma de Barcelona)

SUPERSTARS NEED SOCIAL BENEFITS: AN EXPERIMENT ON NETWORK FORMATION

Arthur Schram, Boris van Leeuwen i Theo Offerman

Document de Treball núm.13/6

La sèrie *Documents de treball d'economia de l'empresa* presenta els avanços i resultats d'investigacions en curs que han estat presentades i discutides en aquest departament; això no obstant, les opinions són responsabilitat dels autors. El document no pot ser reproduït total ni parcialment sense el consentiment de l'autor/a o autors/res. Dirigir els comentaris i suggerències directament a l'autor/a o autors/res, a la direcció que apareix a la pàgina següent.

A Working Paper in the *Documents de treball d'economia de l'empresa* series is intended as a mean whereby a faculty researcher's thoughts and findings may be communicated to interested readers for their comments. Nevertheless, the ideas put forwards are responsibility of the author. Accordingly a Working Paper should not be quoted nor the data referred to without the written consent of the author. Please, direct your comments and suggestions to the author, which address shows up in the next page.

Superstars Need Social Benefits: An Experiment on Network Formation

Boris van Leeuwen, Theo Offerman and Arthur Schram*

19 July 2013

Abstract: We investigate contributions to the provision of public goods on a network when efficient provision requires the formation of a star network. We provide a theoretical analysis and study behavior in a controlled laboratory experiment. In a 2x2 design, we examine the effects of group size and the presence of (social) benefits for incoming links. We find that social benefits are highly important. They facilitate convergence to equilibrium networks and enhance the stability and efficiency of the outcome. Moreover, in large groups social benefits encourage the formation of superstars: star networks in which the core contributes more than expected in the stage-game equilibrium. We show that this result is predicted by a repeated game equilibrium.

Keywords: Network formation, networked public goods, peer production, social benefits, open source software.

JEL codes: C91, D85, H41

Acknowledgements: We would like to thank Vincent Buskens and Sanjeev Goyal for their helpful suggestions at early stages of the project and audiences at presentations at the Tinbergen Institute, Amsterdam; the CCC Meeting 2012, UEA, Norwich; the International ESA Conference 2012, NYU, New York; the Workshop on Information in Networks (WIN) 2012, NYU Stern, New York; GSU, Atlanta; the IMEBE 2013 conference, Madrid; UPF, Barcelona and KU Leuven for their comments and suggestions. Financial help by the Research Priority Area Behavioral Economics of the University of Amsterdam is gratefully acknowledged.

* CREED, University of Amsterdam and Tinbergen Institute, Roetersstraat 11, 1018 WB Amsterdam, The Netherlands. B.vanLeeuwen@uva.nl, T.J.S.Offerman@uva.nl, Schram@uva.nl.

1 Introduction

When individuals acquire and share information, they often do so in groups where they are connected in a network structure. Early work by Lazarsfeld et al. (1944) and Katz and Lazarsfeld (1955) suggests that individuals' roles in the network are distributed in a specific way, where a limited number of individuals influence the majority. This has been observed in applications as diverse as fashion, opinions and voting. Similar findings have been reported more recently. On Wikipedia for instance, a small number of 'Wikipedians' is responsible for the vast majority of articles (Voss, 2005; Ortega et al., 2008). These observations imply that information is typically acquired and shared in networks with a core-periphery structure, where a small core acquires information and a large periphery free-rides.

In this paper, we investigate what drives the formation of such core-periphery networks for the acquisition and sharing of information. An example motivating our research is the development of open source software (OSS). On OSS projects, there are usually a few developers that contribute most of the code while the majority of those involved contribute little or nothing at all (Mockus et al., 2005; von Krogh & von Hippel, 2006; Crowston et al., 2006). The creation of OSS is a public good: everybody can freely access and change the software code and its use is non-rival.¹ Hence, there are two ways to access software code: one can either write it personally or use someone else's code.

Galeotti and Goyal (2010) – GG hereafter – show that these patterns may be the result of strategic interaction. In their network formation game, agents desire to access some public good, for instance OSS code, which they can do either by investing personally (writing code) or by making links to others (using someone else's code). Their main result is that in every strict equilibrium of the game, the number of players who invest in the public good is limited. These players – 'the influencers' – form the core of the network. Other (periphery) players link to the core, without contributing themselves. Together, the core and periphery players form a core-periphery network.

The GG model provides a useful theoretical structure for our analysis. In a controlled laboratory experiment, we investigate public good provision in a network environment where players decide both on their contributions to the public good and on their network connections. In particular, we will consider two network characteristics that may affect the structure in which individuals choose to acquire and share information. First, we examine

¹ Depending on the specific open source license, there may be license requirements on open source software. For example, it is often required that the updated software is also made freely available (e.g., Fershtman and Gandal 2011).

whether core-periphery networks, or more specifically star networks, form more easily when players in the core receive (social) benefits from incoming links. Second, we investigate the effects of group size on the networks that are formed. In a 2x2 experimental design, we will systematically vary benefits from incoming links and group size. We vary both in such a way that the (stage-game) equilibrium predictions of the GG model remain unaffected.²

Nevertheless, we conjecture that both variations matter. First, if a player derives (social) benefits from incoming links, her payoff is increasing in the number of players that link to her. In contrast, a player's payoff is independent of the number of incoming links without social benefits. In GG's baseline model there are no social benefits. Many applications, though, highlight their role. OSS-developers, for example, may derive positive utility from others using their code. Alternatively, social benefits may represent payments by a third party (Roberts et al., 2006), e.g., through advertisements. The way that we model social benefits allows for either of these interpretations. In the model and in the experiment, the presence of social benefits simply implies that more incoming links will lead to a higher (monetary) payoff.

One feature of the original GG model without social benefits is that at least one player in the core earns a lower payoff than players in the periphery. This is the case, because in equilibrium all players receive the same benefits from the public good, while the costs of investing are higher than the costs of linking. As a result, any player prefers to be in the periphery of the network. This makes it very difficult to coordinate on a core-periphery network. Moreover, it seems counterintuitive that 'the influencers' earn a lower payoff than the periphery players. Introducing benefits for an incoming link can change this payoff asymmetry without changing the equilibrium network structure. With social benefits, the core players may earn more in equilibrium than the periphery players.

Our second variation is in group size. The GG model predicts that the maximum number of players who invest and form the core is independent of group size. We conjecture that group size may matter, especially when there are benefits to incoming links. This is because larger networks have more links and therefore generate more benefits from incoming links. For example, the number of peers that use an OSS developer's code may positively influence her status (Lakhani & Wolf, 2005; von Krogh & von Hippel, 2006; Fershtman & Gandal, 2011) or future job opportunities (Lerner & Tirole, 2002). Hence, we may see more players in the core when groups are larger. We empirically investigate this conjecture by

² In section 5, we show that with repeated interaction social benefits do matter for the equilibrium predictions.

varying the group size between four and eight. Our 2x2 design allows us to study the interaction between social benefits and group size.

Our results confirm our conjecture that social benefits matter. When they exist, we observe more Nash network architectures, more convergence to stable outcomes and higher levels of efficiency. In the final 10 rounds, we observe Nash architectures (i.e., a core-periphery structure) in around 75% of the observations in with social benefits. Without social benefits, groups only form Nash architectures in around 20% of the observations in the final 10 rounds. Social benefits also lead to more convergence to stable networks. In the two treatments with social benefits, 11 out of the 14 groups converge to a stable network while without benefits only 3 out of the 13 groups converge to a stable network.

The effect of group size is slightly different than conjectured. It turns out that not the number of players in the core is affected, but their investment in the public good. In groups of four and in the presence of social benefits, groups converge mostly to the Nash star network while with groups of eight we observe that groups mostly converge to ‘*superstars*’. In a superstar, the core player invests in more units of the public good than in the Nash star. They do so in a way that makes superstars more efficient than the Nash star network. The formation of superstars is in line with our theoretical result for the finitely repeated game. We show that superstars with a fixed core player can only be supported in a (subgame perfect) repeated game equilibrium if social benefits are present.

We argue that these superstars form because of competition for the core position. With benefits for an incoming link and groups of eight, it becomes very attractive to be in the core of a star. In the first half of the experiment, we observe in most groups that multiple participants compete by investing heavily in the public good after which they converge to a superstar in the second half of the experiment.

We conclude that stars need benefits: the introduction of social benefits has a substantial impact on the rate of convergence. Our main explanation for this effect is that the introduction of social benefits changes the payoff asymmetries between core and periphery players in the network. Superstars need more, however. They require a periphery that consists of sufficiently many players (and the corresponding social benefits) to make heavy investment worthwhile. In all cases, social benefits not only lead to more convergence but also to higher efficiency. With social benefits, payoffs are significantly closer to the socially efficient outcome than without social benefits.

The remainder of this paper is structured as follows. We start with a brief discussion of previous studies in section 2. We set up the experimental game in section 3. Section 4

describes the experimental design and procedures and in section 5 we provide equilibrium and efficiency predictions. The results of the experiment are described in section 6 and section 7 concludes.

2 Previous Literature

There is a relatively large theoretical literature on network formation and the provision of public goods in networks, either with endogenously formed networks or exogenously given networks.³ Most relevant for our study is the work by Galeotti and Goyal (2010), who extend the network public goods game of Bramoullé and Kranton (2007) by adding endogenous network formation using the protocol designed by Bala and Goyal (2000). As mentioned above, we employ the Galeotti and Goyal (2010) framework in our experiment.

In this brief overview, we focus on experimental work related to ours. Following the boost in network formation theory, the experimental literature on network formation has been steadily growing in recent years. Closest to our study is a recent working paper by Rong and Houser (2012), who investigate network formation and best-shot public good games. Their work differs both in the game that is played on the network and the treatment variables they use. Their game is a best-shot public good game with binary investment: players either invest or not and in equilibrium the (four) players form a star where only the center invests. In their game, the efficient outcome is supported in a Nash equilibrium with a unique network architecture. Hence, efficiency enhancing superstars cannot form in their design. They do not consider the effects of social benefits and group size. In agreement with the results of our treatments without social benefits, they observe Nash networks in only around 13 percent of the cases in the baseline treatment. In their design, they vary the action space that is available to the players and find that a restricted action space yields more equilibrium (star) networks.

Within this experimental literature, most relevant here are studies that use the Bala and Goyal (2000) model as the network formation protocol, like we do. A typical result is that groups rarely converge to equilibrium (star) networks (Falk and Kosfeld, 2012).⁴ This holds when players are homogenous in their value to others. With heterogeneity in values,

³ For an overview of the theoretical literature on network formation, see for example Goyal (2007) and Jackson (2008). Other theoretical papers that study public good provision on endogenously formed networks include Cho (2010) and Cabrales et al. (2011). Galeotti et al. (2010), Boncinelli and Pin (2012) and Bramoullé et al. (2012) study public good provision on exogenous networks.

⁴ Falk and Kosfeld (2012) do observe equilibrium networks in their treatments with 'one-way flow', i.e. where information only flows in the direction of the player who maintains the link. We study networks with 'two-way flow', i.e. information is exchanged between both players on either side of a link. With this protocol Falk and Kosfeld find hardly any convergence to Nash networks unless they allow for pre-play communication between participants.

star networks form more often (Goeree et al. 2009). The (non-)occurrence of Nash equilibria has mainly been attributed to inequity aversion (Falk and Kosfeld, 2012; Goeree et al., 2009). In environments where the equilibrium payoff differences between core and periphery players are large, Nash networks are typically not observed. The role of inequity aversion is highlighted in Goeree et al. (2009), who estimate the parameters from the Fehr and Schmidt (1999) model and find that subjects experience envy, but no guilt.⁵

Other experimental studies consider public good games with strategic substitutes on a fixed network. Rosenkranz and Weitzel (2012) experimentally investigate the public good game by Bramoullé and Kranton (2007), which is also the game participants play in our endogenous network setting. They vary the (exogenously imposed) network structure between treatments. The results show that it is very difficult for subjects to coordinate in this game, but that on the star and the complete network they find some confirmation of the theory. Charness et al. (2012) test the Galeotti et al. (2010) prediction that when players have incomplete information about the network structure, the multiplicity of equilibria is reduced compared to the case of complete information. Their laboratory results largely support this prediction, as even in the case of incomplete information most groups converge to equilibrium play.⁶

We contribute to this literature in various ways. First of all, we highlight the role of social benefits and payoff asymmetries in network formation and show that the introduction of social benefits increases the rate of convergence and the overall efficiency. Secondly, we show that superstars may form in the (finitely) repeated game equilibrium, but that superstars with a fixed core player can only be part of a repeated game equilibrium with social benefits. Third, we find that superstars are formed with social benefits when group size increases and players jockey to be in the core. Fourth, we show that the core-periphery networks predicted by the GG model are observed in the presence of social benefits. Finally, we show that stable star networks may form when the value of a player is endogenous. This extends the work by Goeree et al. (2009) who show that star networks form under exogenous value-heterogeneity but not with homogeneous values.

⁵ Berninghaus et al. (2006) also highlight the role of inequity aversion in network formation. In their network formation experiment in continuous time, participants often rotate being the core of the star in order to equalize payoffs. Falk and Kosfeld (2012) also observe rotating, but only if they allow participants to communicate prior to the experiment. We do not observe any behavior consistent with rotating the core position in our data.

⁶ There are several other experimental papers that investigate games on an endogenous network (Ule, 2005, Corbae & Duffy, 2008, Knigge & Buskens, 2010, Berninghaus et al., 2011, Wang et al., 2012). However, the games they use differ substantially from ours.

Our paper also sheds some light on previous field studies. In a natural field experiment, Zhang and Zhu (2011) investigate contributions to Chinese Wikipedia. They use the repeated blockings of Chinese Wikipedia in mainland China as exogenous variation in group size and observe that contributions increase when groups are larger. Restivo and Van de Rijt (2012) provide a nice example of how social benefits may be operationalized in the field. They show that informal rewards (‘barnstars’) encourage contributors on Wikipedia to increase their contributions. Our experiment and the GG model jointly provide a possible explanation for both findings. We systematically vary group size and social benefits and show that superstars thrive when they receive social benefits in large groups. We find support for a mechanism where superstars are driven by repeated game effects; from the outset some players contribute a lot to acquire the core position in the star; they continue to perform in an exemplary way until a final phase in which their performance deteriorates.

3 Experimental game

In our experiment, we implement a modified version of GG’s ‘Law of the Few’ model. Our main adaptations are that we introduce *benefits* for an incoming link in some of the treatments and that the investment decision is discrete rather than continuous.⁷ In this section, we will describe the version of the game that we use in the experiment. Section 5 describes the equilibrium and efficiency predictions.

Let N denote the set of players $1, 2, 3, \dots, n$. Every player $i \in N$ decides simultaneously on her links g_i and her investment x_i in some good. Any player i decides on whether to make a link to any of the other players $j \neq i$. If she decides to make a link, we write $g_{i,j} = 1$ and $g_{i,j} = 0$, if not. By convention, we set $g_{i,i} = 0$. The linking decisions of i are summarized by $g_i = (g_{i,1}, g_{i,2}, \dots, g_{i,n})$ and the linking decisions of all players jointly define the (directed) network architecture $g = (g_1, g_2, \dots, g_n)$.

In contrast to the game by GG, investing is a discrete choice. Hence, every player $i \in N$ chooses a positive integer for x_i , i.e. $x_i \in \{0, 1, \dots, x_{max}\}$. A strategy of player i is then described by her link and investment decisions, for which we write $s_i = (g_i, x_i)$, and i ’s strategy space is denoted by S_i . A strategy profile s is the collection of all strategies s_i of all $i \in N$. The set of all possible strategy profiles is denoted by S .

⁷ GG also analyze a model allowing for *transfers*. The main difference with the social benefits in our game is that the size of the transfers in GG equal the costs of making a link, while in our case benefits are strictly smaller than the costs of making a link. Moreover, there is a difference in interpretation; social benefits may be considered to reflect either extrinsic or intrinsic motivation, transfers or exogenous income provided by a third party, depending on the application in mind.

Players receive benefits from accessing units of the local public good. The public good is local insofar that any player i accesses her own investment x_i and the investments x_j of her *neighbors* $j \in N_i$. A player j is a neighbor of i , if i links to j or if j links to i , i.e. $N_i = \{j | \max\{g_{i,j}, g_{j,i}\} = 1\}$. The total number of units that i accesses is then given by $y_i = x_i + \sum_{j \in N_i} x_j$. The benefits $f(y_i)$ of accessing units are increasing and concave in y_i . Note that the investment of i and her neighbors are perfect substitutes: i values her own investment the same as any investments by her neighbors.

Investing in units of the good comes at a constant marginal cost of c_i per unit. We introduce small heterogeneities in the cost of investment, as we will describe in more detail in the next section. Making a link comes at a cost k , which is the same for all players. Linking is less costly than investing, i.e. $c_i > k \forall i \in N$. Players receive (social) benefits b from each incoming link. We distinguish between the cases where $b > 0$ and $b = 0$. Moreover, we take $k > b$, which ensures that making links has a net cost to society. All in all, this results in the following payoff function:

$$(1) \quad \Pi_i(s) = f(y_i) - c_i x_i - k \sum_{j \in N_i} g_{i,j} + b \sum_{j \in N_i} g_{j,i}.$$

If we assume self-regarding preferences, a strategy profile s^* is a Nash equilibrium if for every player $i \in N$ it holds that

$$(2) \quad \Pi_i(s_i^*, s_{-i}^*) \geq \Pi_i(s_i, s_{-i}^*) \forall s_i \in S_i,$$

where $\Pi_i(s_i^*, s_{-i}^*)$ is the payoff of player i given that she chooses s_i^* and the other players choose s_{-i}^* .

4 Experimental design and procedures

As explained above, we employ a full 2x2 factorial design that varies the group size and the presence of benefits for an incoming link. Table 1 summarizes this design: we have groups of either 4 or 8 participants, who play the experimental game either with ($b = 12$) or without ($b = 0$) social benefits.

TABLE 1: 2X2 DESIGN: TREATMENTS AND NUMBER OF GROUPS IN EACH TREATMENT

		Social benefits	
		$b = 0$	$b = 12$
Group size	$n = 4$	7	8
	$n = 8$	6	6

Notes. Rows (columns) distinguish between group size (benefits) treatments. Cell entries denote the numbers of observations (groups) for each combination of treatments.

Previous experimental studies on network formation (Goeree et al., 2009; Falk & Kosfeld, 2012) have shown that network formation games are rather difficult for experimental participants. Subjects need time to understand the game and to coordinate their actions. To deal with these issues, we implemented a partners design: i.e. participants are randomly assigned a role within a group and play the experimental game for 50 rounds, with fixed partners.⁸ These partners are identified by letters from A to D or A to H, depending on the group size. The number of rounds is announced in the experimental instructions (see Appendix A).

As introducing public good investment makes the game even more difficult than network games with exogenous values, we introduced two additional measures. First, participants are given 10 practice rounds in order to familiarize them with the game. In each of these rounds, participants can try as many decisions as they like during one minute. There is no interaction in these rounds as the decisions of the other players are exogenously given and kept fixed during the practice round.⁹ Second, we introduce small heterogeneities in the costs of investment c_i between players. These differences are small enough to keep the theoretical predictions independent of the player: in equilibrium the cost heterogeneities do not determine who will take which position in a network.

In the network game, all participants simultaneously decide on whom to link to and how much to invest. On their decision screen, participants can review all previous decisions in a history box, where their own decisions are marked in orange and the decisions of others in blue. Once everyone in the session has made a decision, participants are informed of the resulting network and their own payoffs. Examples of key screenshots are provided in Appendix B.

⁸ This corresponds to how OSS developers interact. On many OSS projects, the key contributors remain active over several years (Robles et al., 2005, Crowston et al., 2012)

⁹ The practice rounds can be played online at www.creedexperiment.nl/superstars/extras.php.

TABLE 2: BENEFITS FROM ACCESSING THE PUBLIC GOOD

Units accessed y_i	0	1	2	3	4	5	$5+\ell$
Benefits $f(y_i)$	0	50	80	90	94	96	$96+\ell$

Notes: Benefits from accessing units of the public good in experimental points.

In the experiment, earnings are denoted in ‘points’. In addition to the starting capital of 1000 points, subjects earn points in every round. Total point earnings are exchanged at the end of the experiment at a rate of 1 euro for every 140 points. Table 2 gives the benefits function $f(y)$ (in points): the costs of linking k and investing c_i are given in Table 3. As specified in section 3, the function $f(y)$ is increasing and concave in y , and $c_i > k \forall i$. Note that the cost of investing c_i varies by player, where A has the lowest cost of investing and the cost of investing increases by the alphabetical order.

TABLE 3: COSTS OF PUBLIC GOOD INVESTMENT AND LINK FORMATION

Role		A	B	C	D	E	F	G	H
Cost per unit of the PG c_i	$n = 4$	23	25	27	29				
	$n = 8$	22	23	24	25	26	27	28	29
Link cost k		20	20	20	20	20	20	20	20

Notes: Costs per unit of PG investment and costs per link made in experimental points. At the beginning of the experiment, participants are assigned an id, which is denoted by a letter A to H. This id remains constant throughout the experiment.

Sessions were run in April 2012 in the CREED-laboratory of the University of Amsterdam and lasted about 2 hours.¹⁰ In total, 156 subjects participated in the experiment, each in only one session. Participants were recruited from the local CREED database, which consists mostly of undergraduate students from various fields. Of the participants in our experiments, 39% are female and 60% were studying at the Faculty of Economics and Business. Cash earnings were between 17.10 euro and 49.50 euro, with a mean of 26.59.¹¹

The experiment was computerized using PHP/MySQL and was conducted in Dutch. Upon entering the laboratory, participants were randomly allocated a separate cubicle and communication was prohibited throughout the session. Before starting the network experiment, we elicited risk preferences using a procedure similar to Gneezy and Potters

¹⁰ We also ran pilot sessions based on a strangers design where the participants were provided with a social history screen. We found that coordination is extremely difficult when participants do not have a fixed role and that with fixed roles, stranger rematching, social history screen and social benefits some groups converge to Nash equilibria, but less often than with partner matching.

¹¹ In one session, participants received an additional 10 euro because the session took almost 3 hours. This is not included in the numbers above. They were not informed about this additional lump-sum payment until the experiment had finished.

(1997). Participants were only informed of the outcome of this part at the very end of the experiment. After this, participants read the instructions of the network game at their own pace, on-screen. While reading the instructions, a printed summary was handed out. To ensure that all participants understood the instructions, they were required to answer several test questions. The experiment would only continue if everyone had answered all questions correctly. The ten practice rounds followed the test questions before the network game started.¹²

We ended each session with a short questionnaire where we gathered some demographic data and asked participants to describe how they had made their decisions in the network game. After this, we privately informed participants of the outcome of the risk elicitation task and their aggregate earnings in the experiment. Participants were privately paid in cash for all rounds of the network game and the risk-elicitation task.

5 Equilibrium and efficiency predictions

5.1 Stage-game equilibria

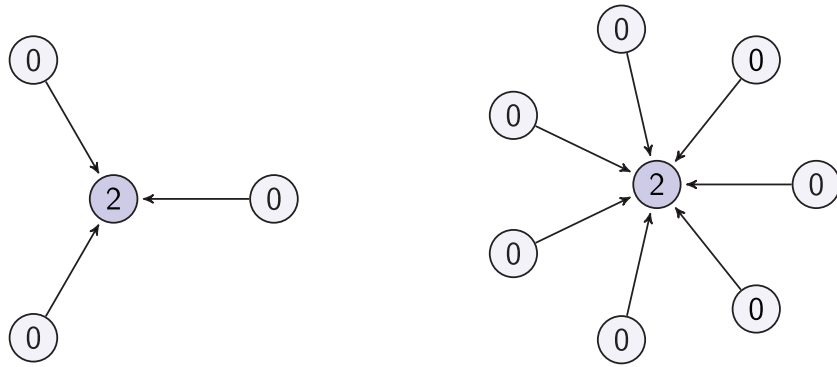
Here, we derive the stage-game equilibrium predictions for the experimental game described in section 3 and the parameters presented in section 4. If we assume selfish and rational players, the Nash equilibrium networks of the stage game are the same in all experimental treatments, i.e. they are core-periphery networks where either one or two players invest and form the core while the remaining players link with the core and do not invest themselves.¹³ This is also the main result of GG.

Figure 1 and Figure 2 illustrate the Nash equilibrium networks. In these figures, circles represent the players and the numbers inside these circles represent the investment by the player concerned. A link is represented by an arrow, which points away from the player who initiated it. Hence, we see either a *Nash star* network (Figure 1), where only the single core player invests or a *Nash 2-hub* network (Figure 2) where both core players invest. In either case, the other players form links to the core and do not invest.

¹² An English translation of the handout summary is provided in Appendix A. A translation of the full instructions and the practice questions is available at www.creedexperiment.nl/superstars/extras.php.

¹³ The proof follows directly from Proposition 2 in Galeotti and Goyal (2010). Contrary to what is suggested in their Proposition 3, the core player is not uniquely determined in our game even though we have small heterogeneities in the costs of investment. This is because we implement discrete rather than continuous investments.

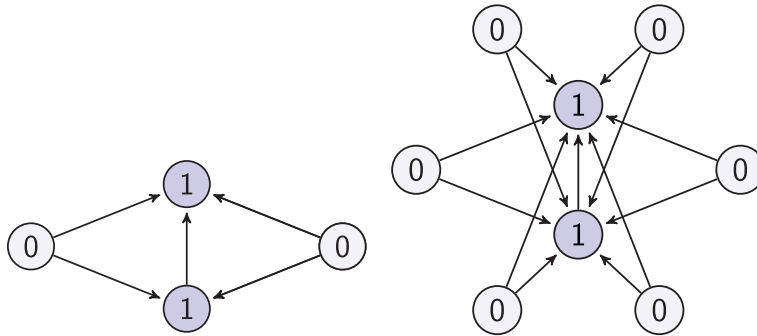
FIGURE 1: NASH STAR NETWORKS



Notes: Nash star networks with $n=4$ and $n=8$ players.

Figure 1 shows *Nash star networks* with 4 and 8 players. In either case, there is exactly one player who invests in two units of the public good and makes no links while the other players do not invest and make exactly one link to the core-player who invested in the two units. This type of star network is referred to in the literature as a *periphery-sponsored star*.

FIGURE 2: NASH 2-HUB NETWORKS



Notes: Nash 2-hub networks with $n=4$ and $n=8$ players.

Figure 2 illustrates Nash core-periphery networks with 2 players in the core, again for groups of 4 and 8 players. We will refer to these networks as *Nash 2-hub networks*. In these networks, each of the two core players invests in 1 unit and one of the two core players makes a link to the other core player, who makes no links. As in the Nash star, the periphery players do not invest but they do link to (each of) the core players.

The intuition for why these are the possible networks in equilibrium is the following. The marginal benefits of the public good exceed the costs of investing for up to two units of the good. This means that every player wants to access at least two units of the good. Recall that the investments of a player and her neighbors are perfect substitutes. As the costs of making a link are strictly smaller than the costs of investing, i.e. $k < c_i \forall i \in N$, any player

would strictly prefer to access the investment of others rather than investing personally. Combined, this implies that the total investment will sum up to two units. Hence, there will be either one or two players who invest in equilibrium, as is the case in the Nash star and 2-hub networks. Note that there are multiple Nash star and Nash 2-hub equilibria, as every player can be in the core of the network in equilibrium, despite the heterogeneities in investment costs.¹⁴

As mentioned above, the stage-game equilibria are the same in all four experimental treatments. GG show that in equilibrium, the number of players in the core is independent of group size. More specifically, they show that the number of core players $|N_c|$ is bounded from above by $|N_c| \leq \hat{y} \frac{c}{k}$, where \hat{y} is the number of units any player will access in equilibrium. This result carries over to our game, where $\hat{y} = 2$, $c_i \in [22, 29] \forall i$ and $k = 20$; thus $|N_c| \leq 2.9$. Hence, there will be either one or two players in the core of the equilibrium network.

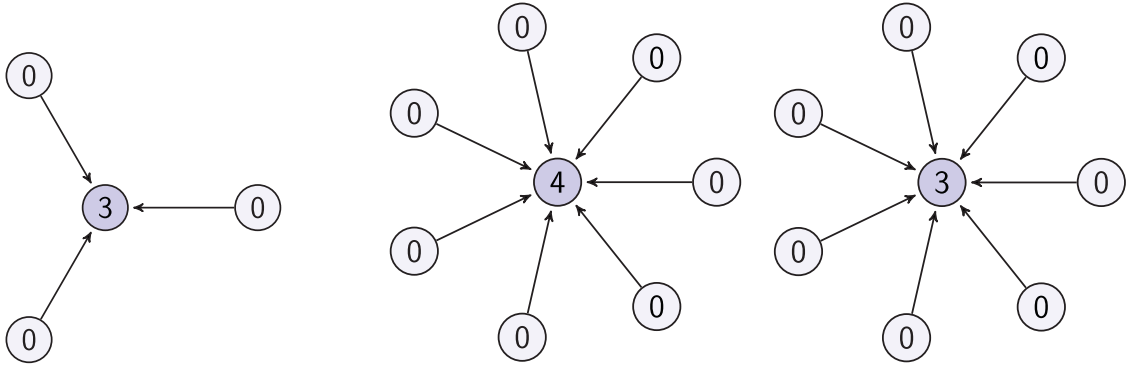
Introducing social benefits does not affect the set of stage-game equilibrium networks. This is the case because, given the strategies s_{-i} of all players $j \neq i$, for any player $i \in N$ a strategy s_i yields a (strictly) higher payoff than strategy s'_i if and only if $\Pi_i(s_i, s_{-i}) - \Pi_i(s'_i, s_{-i})$ is (strictly) positive. Hence, player i will prefer strategy s_i over s'_i if

$$(3) \quad f(y_i) - f(y'_i) - c_i(x_i - x'_i) - k \left(\sum_{j \in N_i} g_{i,j} - \sum_{j \in N'_i} g'_{i,j} \right) + b \left(\sum_{j \in N_i} g_{j,i} - \sum_{j \in N'_i} g_{j,i} \right) \geq 0.$$

As the linking decisions of all other players are fixed in the above equation, it must be that $\sum_{j \in N_i} g_{j,i} = \sum_{j \in N'_i} g_{j,i}$ and the final term on the left hand side of (3) cancels. Hence, i 's decision is independent of the social benefits level b and the set of equilibrium networks must be independent of b .

¹⁴ To be precise: there are n different Nash star equilibria and $n(n-1)$ Nash 2-hub equilibria.

FIGURE 3: SUPERSTARS



Notes: Examples of superstars. A superstar is a periphery-sponsored star where the core player invests more than in the Nash star. For $n = 4$, the superstar where the core player invests in 3 units is an efficient outcome of the game, for $n = 8$ this is the superstar where the core-player invests in 4 units.

5.2 Efficient networks: Superstars

Next, we consider efficient networks in the distinct treatments. We define social welfare W in a network resulting from a strategy profile s as the sum of all individual payoffs, i.e. $W(s) = \sum_{i \in N} \Pi_i(s)$. A network s is called *efficient* if

$$(4) \quad W(s) \geq W(s') \quad \forall s' \in S.$$

Based on this definition, the efficient network is a (minimally-sponsored) star in which the core player invests in more units than in the Nash star and the periphery players do not invest.¹⁵ If $n = 4$ the core player invests in 3 units and if $n = 8$ she invests in 4 units.¹⁶

In our analysis, we will also consider *superstars*. We call a network s a superstar if it is a periphery-sponsored star where the core invests in more units than in the Nash star. Examples of superstars are illustrated in Figure 3. Note that the efficient periphery-sponsored stars are superstars.

5.3 Repeated game equilibria

In the experiment, participants play the stage game 50 times in fixed groups. This constitutes a finitely repeated game with a plethora of repeated-game equilibria. In Appendix C, we

¹⁵ This follows from Proposition 4 in GG. A minimally-sponsored star is a star network where all connections between the core player and the periphery players are minimally sponsored, i.e. either the core or the periphery player makes a link but not both. Note that the periphery-sponsored star is also a minimally-sponsored star.

¹⁶ Note that in the efficient star networks, the total investment is higher than in the Nash star and that none of the Nash networks is efficient. However, the Nash star is the *efficient equilibrium* as the sum of all benefits and costs of investment is the same in the Nash star and in the Nash 2-hub, but the sum of link costs and social benefits $((k - b) \sum_{i,j \in N} g_{i,j})$ is higher (i.e., more negative) in the Nash 2-hub because there are more links in this network than in a star.

discuss a set of repeated-game equilibria that are more efficient than the repeated play of stage-game equilibria.

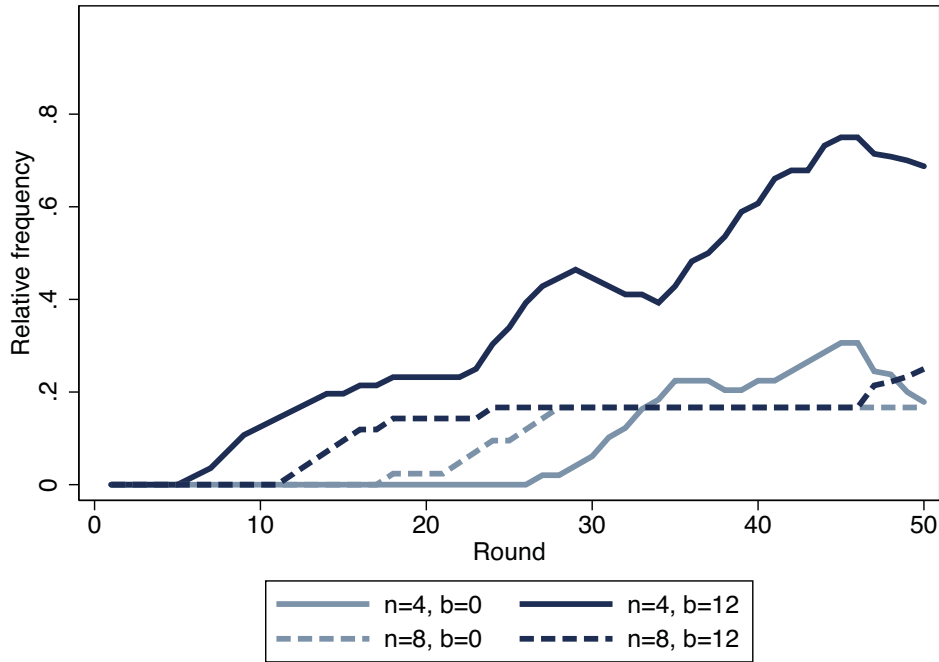
GG only provide an analysis for the stage game. Appendix C shows that superstars can be sustained in a (subgame perfect) repeated game equilibrium. For all our treatments, superstars can be sustained until round 48 by rotating the core position. However, we know from previous studies (Goeree et al., 2009; Falk & Kosfeld, 2012) that coordination is very difficult in network formation experiments. Moreover, in many examples of real world networks, such as OSS projects, the key contributors typically do not change over time (Mockus et al., 2005). If we restrict the set of repeated game equilibria to profiles in which the core position is not rotated, we can show that superstars *cannot* be sustained without social benefits. In the presence of social benefits however, a superstar with a fixed core *can* be sustained until the penultimate round.

The intuition behind this result is the following: in the presence of social benefits, the periphery players can induce the core to contribute at the efficient level by the threat that they will remove their links if the core invests too little. This threat has no bite without social benefits.

6 Results

In this section, we will present our experimental results. We will provide an overview of the networks we observe, and a discussion of the stability and efficiency of these networks. We will also report the circumstances under which super stars are observed and we will deal with the question of how the emergence of superstars can be explained. Unless stated otherwise, all tests reported in this section are Mann-Whitney tests. Throughout, we use two-sided tests using average statistics per group as units of observation.

FIGURE 4: DEVELOPMENT OF NASH NETWORKS



Notes: Lines show the relative frequencies of stage-game equilibria by treatment and round: i.e. all Nash star and Nash 2-hub networks. Lines are smoothed by taking the moving average over rounds $t - 3$ to $t + 3$ for every round t .

6.1 Do groups converge to Nash equilibria?

First, we consider the question of whether Nash networks are formed. Figure 4 shows the relative frequency of Nash networks over time across treatments. The darker lines refer to the treatments with social benefits and the lighter ones to those without. In addition, the solid lines refer to treatments with groups of 4 while the broken lines refer to treatments with groups of 8. In the treatment with groups of four and social benefits ($n = 4, b = 12$), we find that the relative frequency of Nash networks steadily increases over time. In early rounds we observe few Nash networks, but in the final 10 rounds of this treatment we observe Nash networks in 70% of the cases.

Nash networks occur considerably less often in the other three treatments. In each of these, the number of Nash networks starts out low and increases over time, but only to a level of around 20%. If we compare the mean number of Nash networks between the social benefit treatments – ($n = 4, b = 12$) versus ($n = 4, b = 0$) – the difference is significant at the 5% level, both across all rounds ($p = 0.03$) and for the last 10 rounds ($p = 0.04$). Also when we compare the treatment with social benefits and larger groups ($n = 8, b = 12$) to the smaller networks with social benefits ($n = 4, b = 12$), we observe significantly fewer Nash networks

across all rounds ($p = 0.04$) and marginally significantly fewer in the last 10 rounds ($p = 0.08$).¹⁷ Other pairwise differences between treatments are statistically insignificant.

6.2 Do groups converge to Nash architectures?

It may be difficult for participants to coordinate exactly on Nash networks. Therefore we will first consider *Nash architectures*, which are all networks where the linking decisions are the same as in a Nash network, but the public good investments may differ. That is, we will look at the occurrence of periphery-sponsored star and periphery-sponsored 2-hub networks, irrespective of investment levels.

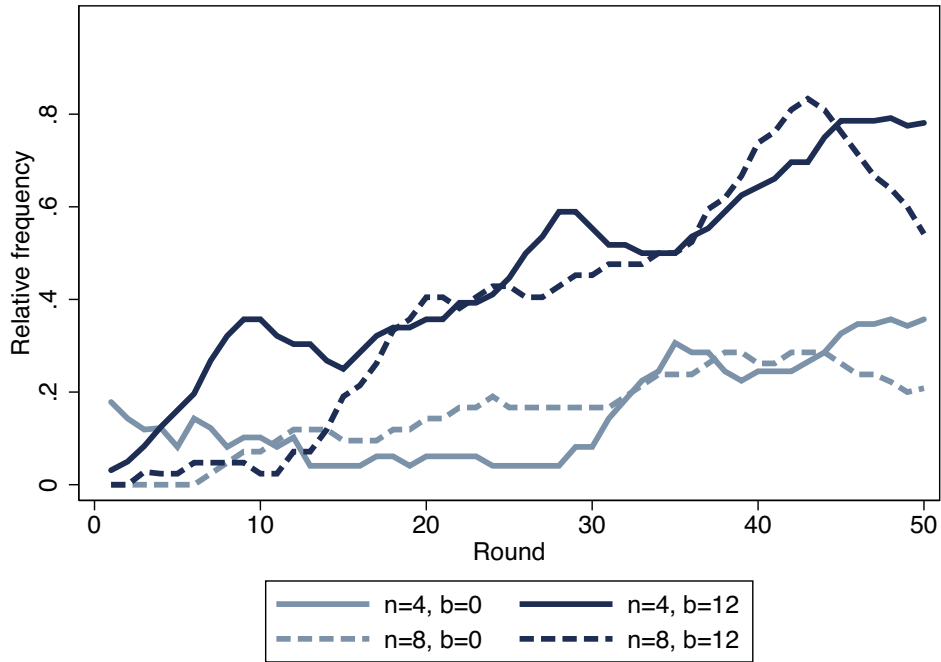
Figure 5 plots the relative frequency of Nash architectures over time. Again we see that in treatment ($n = 4, b = 12$) the relative frequency steadily increases over rounds, now up to 75% in the last 10 rounds. This is no surprise, as all Nash networks are also Nash architectures by definition. Interestingly, we now also observe that most groups converge to Nash architectures in the ($n = 8, b = 12$) treatment.¹⁸ In the last 10 rounds we observe Nash architectures in 72% of the group/round observations in this treatment. For the two treatments without social benefits ($n = 4, b = 0$) and ($n = 8, b = 0$), we observe Nash architectures in only 31% and 25% of the cases, respectively, in the last 10 rounds.

We conclude that groups converge considerably more often to Nash architectures when there are benefits for an incoming link. These differences are also statistically significant. If we compare the treatments with and without social benefits (pooled across group sizes), the difference is significant at the 5% level, both across all rounds ($p = 0.01$) and the final 10 rounds ($p = 0.01$). If we compare the treatments with and without social benefits for a given group size, the differences are significant for groups of four across all rounds ($p = 0.04$) and marginally so in the last 10 rounds ($p = 0.06$). For groups of eight, the differences are marginally significant in the final 10 rounds ($p = 0.09$), but not across all rounds ($p = 0.22$).

¹⁷ A Kruskal-Wallis test comparing all four treatments also rejects the hypothesis that the relative frequency of Nash networks is the same across treatments: $p = 0.03$ in all rounds and $p = 0.07$ in the last 10 rounds.

¹⁸ The upward trend for the two cases with social benefits is confirmed by statistical testing. Signed Wilcoxon tests reject the hypothesis that the frequency of Nash architectures is the same in the first and second halves of the experiment for the treatments with social benefits ($p = 0.02$ for ($n = 4, b = 12$) and $p = 0.03$ for ($n = 8, b = 12$)) but not for the treatments without social benefits ($p = 0.67$ for ($n=4, b=0$) and $p = 0.49$ for ($n=8, b=0$)).

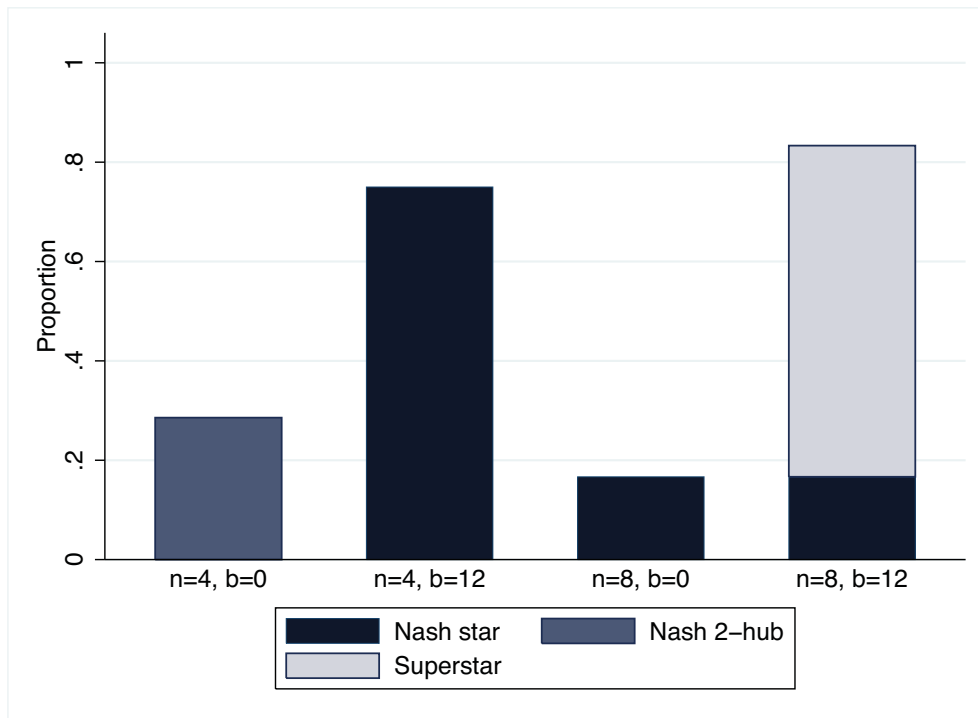
FIGURE 5: DEVELOPMENT OF NASH ARCHITECTURES



Notes: Lines show the relative frequencies of Nash architectures, i.e. all periphery-sponsored stars and periphery-sponsored 2-hub networks. In a Nash architecture, the network structure is the same as in the Nash networks, but the investments may differ from Nash predictions. Lines are smoothed by taking the moving average over rounds $t - 3$ to $t + 3$ for every round t .

In treatment $(n = 8, b = 12)$, we observe that most groups play a Nash architecture in the final 20 rounds of the experiment. However, unlike treatment $n = 4, b = 12$, we do see an end-effect: there is a sharp decline in the number of Nash architectures in the last 10 rounds. We will look at this end-effect in more detail in section 6.4. Before doing so, we will investigate the networks to which groups converge in the different treatments.

FIGURE 6: PROPORTION OF GROUPS CONVERGING



Notes: Bars show the proportion of groups converging by treatment and the network to which a group converges. A group converges to a network if this network is observed for more than 5 consecutive rounds. The graph does not change if we define convergence as observing the same network for either more than 3 or 4 rounds. No group converged to any other network and no group converged to more than one type of network.

6.3 To which networks do groups converge?

In the preceding subsections we found that with social benefits, groups converge to Nash architectures most of the time. The question remains, to which networks they converge. Figure 6 shows the proportion of groups that converge to a stable network. A group is said to converge if it is observed to play exactly the same network in more than 5 subsequent rounds, where every player has the same role in each round.¹⁹ In the two treatments with social benefits, 11 out of 14 groups converge to a stable network, all of which are periphery-sponsored stars. Without social benefits, only 3 out of 13 groups converge to a stable outcome. Hence, the introduction of social benefits has a crucial effect on the convergence towards stable networks. The difference in proportions is highly significant (Fisher's exact test, $p = 0.01$).

Aside from the differences in the frequencies of convergence, we observe that groups converge to different networks in distinct treatments. In the treatments with social benefits, groups always converge to periphery-sponsored stars (if they converge). With groups of four this is always the Nash star, while with groups of eight only 1 group converges to the Nash

¹⁹ Callander and Plott (2005) and Rosenkranz and Weitzel (2012) use a similar notion of convergence in their analysis.

star, while 4 groups converge to a superstar. Hence, larger groups converge to star networks that are more efficient than the stage-game Nash equilibria. In the treatments without social benefits we observe far less convergence. In $(n = 4, b = 0)$ we find that only 2 out of 7 groups converge to a stable network and both groups converge to the Nash 2-hub network. In $(n = 4, b = 0)$, only a single group (out of 6) converges, this time to the Nash star.

These results that stars need benefits: we observe considerably more convergence when there are social benefits, both with groups of 4 and groups of 8 players. There is no significant effect of group size on the frequency of convergence (Fisher's exact test, $p = 1.00$). Group size does affect the level of public good contributions, however, when there are social benefits. With larger groups, the core player invests in more units of the good and superstars form. These superstars are either efficient, or very close to being efficient. We discuss them in more detail in the following subsection.

6.4 Superstars

In treatment $(n = 8, b = 12)$ most groups converge to a superstar: a periphery sponsored star where the core invests in more units than in the Nash star. We rarely observe investment above two units in the other treatments.²⁰ The superstars that we observe in treatment $(n = 8, b = 12)$ are efficient or very close to being efficient. Here, we will discuss possible explanations for why superstars are formed in this treatment but not in the other treatments.

In section 5.3 we showed that superstars can be part of a repeated game equilibrium in all treatments. Superstars with a fixed core player however, can only be supported with positive social benefits. This is what we observe in treatment $(n = 8, b = 12)$: in the superstars that are formed, the same player always takes the core position. Thus, the observed networks are in line with the theoretical predictions. Note that even though superstars with a fixed core are also part of a repeated game equilibrium in treatment $(n = 4, b = 12)$, we do not observe stable superstars in this treatment.²¹ An intuitive explanation for this result is that being in the core of the superstar is particularly attractive in large groups. With groups of eight, the core player in a superstar earns a higher payoff than a periphery player in the Nash star, while in groups of four the opposite holds. This makes it worthwhile for periphery

²⁰ More specifically, we observe investment above two units in 1.2% of the observations in the other treatments.

²¹ Two groups did form a superstar in treatment $(n = 4, b = 12)$, However, one group only stayed in this superstar for two subsequent rounds while the other group only played a superstar in two separate rounds. Of course, we do observe that most groups in this treatment play another repeated game equilibrium: the repeated play of the Nash star.

players in large groups to ‘challenge’ the core in a Nash star, while such an incentive is lacking in small groups.

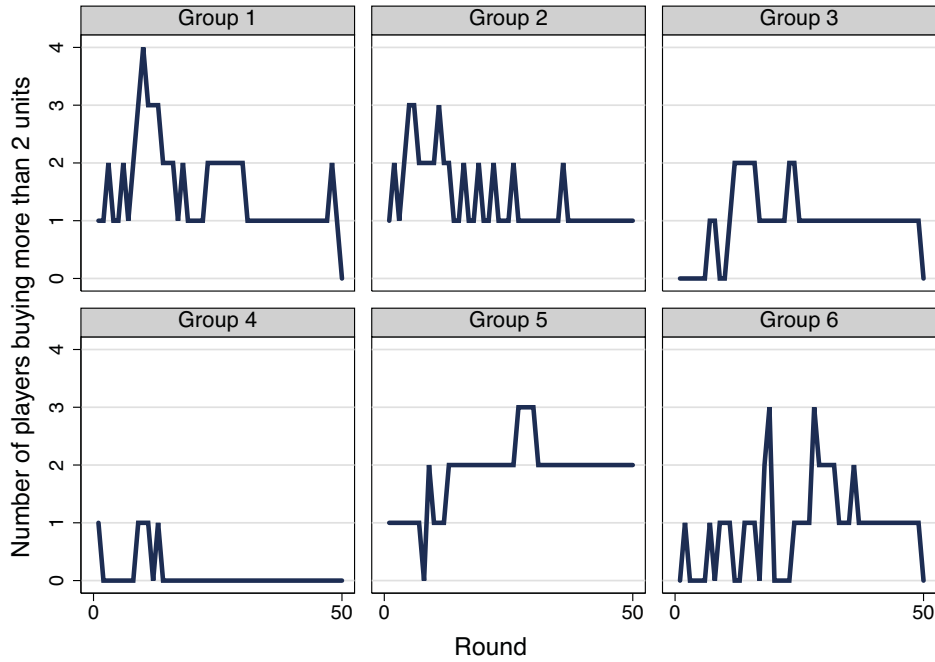
Indeed, participants seem to compete for the core position in treatment ($n = 8, b = 12$).²² Figure 7 shows the number of players who invest in more than two units of the good in each of the six groups in treatment ($n = 8, b = 12$). In all groups we observe some player investing in more than two units of the good, and in five out of six groups we observe multiple participants doing so. In four of these groups, at some point all competitors but one give in and the group converges to a superstar. In one group (group 5), two participants continue to compete for the core position until the final round.

An alternative explanation would be that subjects are concerned about the payoffs of other players; they may for example be inequity averse or altruistic. In the Nash star with eight players, the core player earns about twice as much as the periphery players. She can decrease this payoff difference by investing in more units: all periphery players will benefit while the payoff of the core player drops. To distinguish between this alternative explanation and a repeated game explanation behavior in the final rounds can be used. In the four groups that converge to a superstar, in the final round three core players decrease their investment in the public good to the stage-game Nash level of two, or below. This is illustrated in Figure 7. Groups 1, 2, 3 and 6 converged to a superstar. In the final round, the core players of the superstars in 1, 3 and 6 decreased their investment to two units or less, which they would not have done if they were driven by guilt or altruism. The process of subjects’ jockeying for the core position in the early rounds together with the end-round effect support the repeated game interpretation of the results.²³

²² The benefits function $f(y)$ is such that it is never a best response for a player to link to multiple players if there is one player who invests in two or more units. Hence, the best response for selfish and rational players who do not invest themselves is to make one link to the player with the highest investment.

²³ The beneficial effect of social benefits on coordination on a superstar is reminiscent of a result reported in Brandts and Cooper (2006) and Brandts et al. (2007). In their weakest-link games, increasing the benefits of coordination leads to coordination at higher effort levels. An important difference between their result and ours is that in the weakest link game coordination of the efficient outcome is supported as a Nash equilibrium of the stage game, while we observe that superstars invest more than what is expected in the stage-game equilibrium.

FIGURE 7: NUMBER OF PARTICIPANTS BUYING ABOVE NASH LEVELS IN ($n = 8, b = 12$)



Notes: Lines show the number of participants who buy more than two units of the good in each of the six groups for every round of treatment ($n = 8, b = 12$).

6.5 Frequently observed networks and stability

If a group converges, it is always to a Nash architecture: we observe groups converging to Nash stars, Nash 2-hubs and superstars.²⁴ These networks are also the most frequently observed networks. Table 4 lists the observed frequency of various networks.

Across all treatments, the most frequently observed network is the Nash star. We observe it especially often in treatment ($n = 4, b = 12$), where it is formed in 140 of the 400 cases. As described in above, 6 out of 8 groups in this treatment converged to a Nash star and played this network for a substantial number of periods. In treatment ($n = 8, b = 12$) we observe a substantial number of superstars: in 75 out of 300 the group/round observations a superstar is formed. Again, in this treatment most groups converged to a superstar.

²⁴ The cost heterogeneities we introduced are by themselves insufficient to achieve coordination: in the treatments without social benefits, we observed convergence in a small number of groups only. If convergence is achieved however (in any treatment), it is indeed usually the low-cost role (A) who acquires the core position. In these treatments, 10 out of 11 groups that converge to a star A is in the core, the other group has D in the core. Over all treatments, in 71% of all stars and in 33% of all 2-hub networks A is in the core.

TABLE 4: FREQUENCY OF NASH ARCHITECTURES AND THEIR STABILITY

	$n = 4$		$n = 8$	
	$b = 0$	$b = 12$	$b = 0$	$b = 12$
Nash star	0 (-)	140 (0.90)	27 (0.96)	37 (0.97)
Nash 2-hub	31 (0.77)	1 (0.00)	0 (-)	0 (-)
Superstar	0 (-)	4 (0.00)	0 (-)	75 (0.76)
Other star	19 (0.00)	38 (0.13)	19 (0.05)	3 (0.00)
Other 2-hub	5 (0.00)	1 (0.00)	1 (0.00)	0 (-)
Other networks	295 (0.01)	216 (0.04)	253 (0.00)	185 (0.04)
Groups	7	8	6	6
Observations	350	400	300	300

Notes: Cells denote the frequency of the network architectures denoted in the first column in all rounds. The proportion of times that exactly the same network is played in the subsequent round is given between parentheses. The category 'other stars' refers to periphery-sponsored stars only.

Table 4 also lists the stability of the selected networks by treatment. The Nash star is observed to be very stable in all treatments where it is formed: in more than 90% of the rounds in which it is observed, the Nash star is again formed in the subsequent round. The same is true for the Nash 2-hub network. In treatment ($n = 4, b = 0$), we observe the Nash 2-hub in 31 rounds and in 77% of the subsequent rounds the Nash 2-hub is observed again. In treatment ($n = 8, b = 12$) we frequently observe superstars. They are also very stable: in 76% of the rounds that a superstar is formed it is also observed in the subsequent round. Note that this is a sizable number: all eight participants are required to make exactly the same decision in the subsequent round. All other networks are observed to be far less stable than Nash networks and superstars.

TABLE 5: FIRST ROUND OF CONVERGENCE

		Frequency table	Mean	St. Dev	Groups
$n = 4$	$b = 0$	32 43	37.50	7.78	7
	$b = 12$	9 23 27 38 41 44	30.33	13.26	8
$n = 8$	$b = 0$	25	25.00	-	6
	$b = 12$	21 27 30 39 39	31.20	7.82	6

Notes: Cell entries denote the first round from which the same network was played for more than 5 consecutive rounds, i.e. the minimal round t for which the same network is observed in rounds t to $t+5$. The column "Frequency Table" lists this minimal t for each of the groups for which convergence was observed.

Finally, Table 5 indicates how long it takes for groups to converge. Aside from one group that plays the same network from round 9 to 50, groups usually need a substantial number of rounds to converge to a stable network. Most groups need more than 25 rounds to do so. We conclude that in our experiments groups need time to reach a stable network, but once reached they will not easily abandon it.

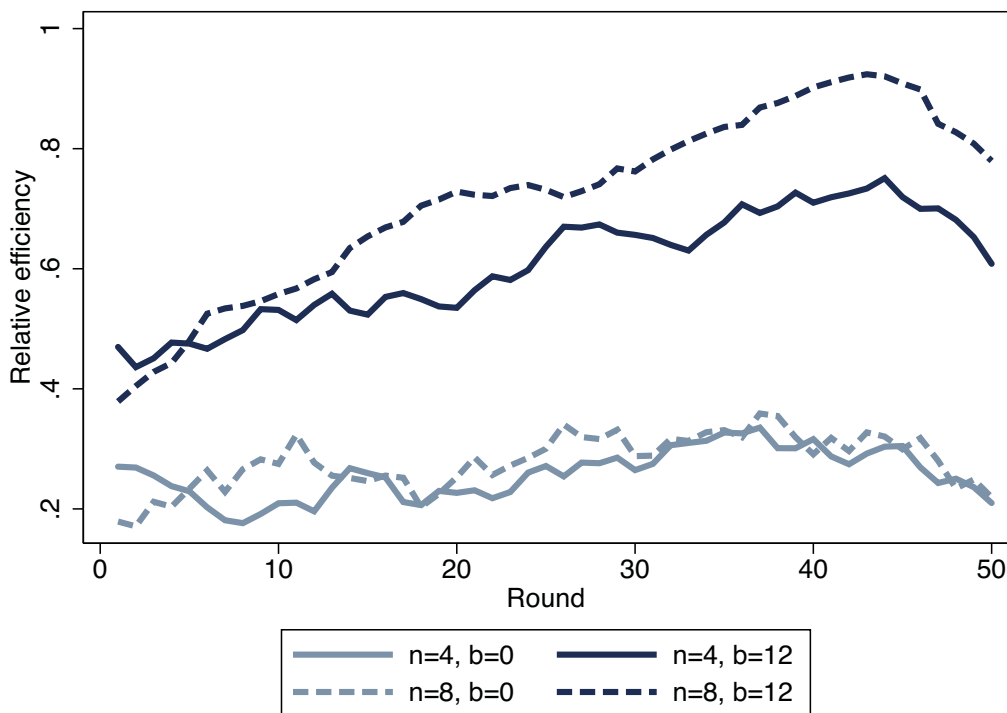
6.6 Efficiency analysis

We now consider treatment differences in observed efficiency. We found that the introduction of social benefits yields more convergence towards Nash architectures. Does this imply that we observe more efficient outcomes? Figure 8 shows the mean relative efficiency per treatment across rounds. We define relative efficiency such that it equals 1 if the efficient outcome is reached and 0 if the sum of payoffs equals the sum of payoffs that would be achieved if there were no interaction, i.e. if all players invest in two units and make no links.²⁵

There is a large difference in relative efficiency between treatments with and without social benefits. Across all rounds, the mean relative efficiency of the treatments with social benefits is 0.67 while this is only 0.27 in the treatments without social benefits. This difference is statistically significant, both when we compare groups with- and without social benefits for $n = 4$ ($p < 0.01$) and for $n = 8$ ($p < 0.01$). Hence, the introduction of social benefits not only leads to more Nash architectures and higher convergence but also to more efficient outcomes.

²⁵ Relative efficiency r_t in round t is defined as $r_t(s_t) = (W(s_t) - (\sum_i f(2) - 2c_i)) / (W_{max} - (\sum_i f(2) - 2c_i))$, where $W(s_t)$ is the sum of all payoffs in a group in round t and W_{max} is the maximally attainable sum of payoffs. The Nash star, which is the efficient equilibrium of the stage game, has a relative efficiency of between 0.77 and 0.89, depending on the treatment.

FIGURE 8: RELATIVE EFFICIENCY



Notes: Lines show mean relative efficiency across rounds by treatment. Relative efficiency in round t is defined as $(w(s_t) - (\sum_i f(2) - 2c_i)) / (w_{max} - (\sum_i f(2) - 2c_i))$. Lines are smoothed by taking the moving average over rounds $t - 3$ to $t + 3$ for every round t .

In line with the result that superstars occur frequently in treatment ($n = 8, b = 12$) but not in ($n = 4, b = 12$), suggests that the relative efficiency is higher in the former treatment. This difference is not statistically significant, however; neither over all rounds ($p = 0.20$) nor in the final 10 rounds ($p = 0.24$).

7 Conclusion

We investigated network formation in an environment where players decide both on the network structure and on their contributions to a local public good. For this, we employed the model of Galeotti and Goyal (2010) and systematically investigated the effects of group size and social benefits. We find that the presence of social benefits is crucial for the results. With social benefits, we observe more Nash network architectures, more convergence to stable outcomes and higher levels of efficiency. In combination with a large group size, social benefits lead to the frequent emergence of superstars who contribute the socially efficient level on a Nash network. In stark contrast, groups rarely converge to equilibrium networks, and never to any other stable outcome when there are no social benefits to being in the core of the network.

A first question one may ask is why we observe convergence to stars with social benefits and not without. This may be related to the ease of coordination. Without benefits, the core player has a lower material payoff than the periphery players. A player finding herself in the core can easily change this situation by no longer investing (but this is not a best response, of course; she cannot make anyone else take over her position). With benefits, the core has higher payoffs than the periphery. Once in that position, a core player has no reason to change.

A related question is why superstars need social benefits? We attribute our results to the repeated nature of the game. Theoretically, superstars can form in any of our treatments as long as players coordinate on a rotation scheme. Such coordination is extremely difficult to accomplish, however. In agreement with previous experimental results and observations outside of the laboratory, our subjects do not rotate the core position once a star network has been formed. If we limit our attention to subgame perfect equilibria where the same player remains in the core of the network, superstars can only form in the presence of social benefits.

In our experimental game the position of the core player in a superstar is only superior in terms of payoffs to the periphery position in the Nash star when groups are large and there are social benefits. In agreement with this observation, we only observe that subjects start by jockeying for the core position in this treatment. Once the dust has settled and subjects have implicitly agreed on who will be the core of the superstar, a stable outcome arises in which the core player consistently contributes more than the stage-game Nash level and all others continue to form links to the core. This convention of playing the game survives until the final phase of the experiment, in which the superstars opportunistically decrease their contributions. Alternatively, one could consider inequity aversion as a reason for superstars to arise in this treatment. We have argued above that this explanation is hard to reconcile with the observation that the core players reduce their investments in the final round of the game.

References

- Bala, V., & Goyal, S. (2000). A noncooperative model of network formation. *Econometrica*, 68(5), 1181-1229.
- Benoit, J., & Krishna, V. (1985). Finitely repeated games. *Econometrica*, 43(4), 905-922.
- Berninghaus, S., Ehrhart, K., & Ott, M. (2006). A network experiment in continuous time: The influence of link costs. *Experimental Economics*, 9(3), 237-251.

- Berninghaus, S., Schosser, S., & Vogt, B. (2011). *Complexity of networking-an experimental study of the network hawk dove game*. Unpublished manuscript.
- Boncinelli, L., & Pin, P. (2012). Stochastic stability in best shot network games. *Games and Economic Behavior*, 75(2), 538-554.
- Bramoullé, Y., Kranton, R., & D'Amours, M. (2012). *Strategic interaction and networks*. Unpublished manuscript.
- Bramoullé, Y., & Kranton, R. (2007). Public goods in networks. *Journal of Economic Theory*, 135(1), 478-494.
- Brandts, J., & Cooper, D. J. (2006). A change would do you good.... an experimental study on how to overcome coordination failure in organizations. *American Economic Review*, 96(3), 669-693.
- Brandts, J., Cooper, D. J., & Fatas, E. (2007). Leadership and overcoming coordination failure with asymmetric costs. *Experimental Economics*, 10(3), 269-284.
- Cabrales, A., Calvó-Armengol, A., & Zenou, Y. (2011). Social interactions and spillovers. *Games and Economic Behavior*, 72(2), 339-360.
- Callander, S., & Plott, C. R. (2005). Principles of network development and evolution: An experimental study. *Journal of Public Economics*, 89(8), 1469-1495.
- Charness, G., Feri, F., Meléndez-Jiménez, M. A., & Sutter, M. (2012). *Equilibrium selection in experimental games on networks*. Unpublished manuscript.
- Cho, M. (2010). Endogenous formation of networks for local public goods. *International Journal of Game Theory*, 39(4), 529-562.
- Corbae, D., & Duffy, J. (2008). Experiments with network formation. *Games and Economic Behavior*, 64(1), 81-120.
- Crowston, K., Wei, K., Howison, J., & Wiggins, A. (2012). Free/libre open-source software development: What we know and what we do not know. *ACM Computing Surveys (CSUR)*, 44(2), 7.
- Crowston, K., Wei, K., Li, Q., & Howison, J. (2006). Core and periphery in free/libre and open source software team communications. *Proceedings of the 39th Annual Hawaii International Conference on System Sciences, 2006. HICSS'06.* , 6
- Falk, A., & Kosfeld, M. (2012). It's all about connections: Evidence on network formation. *Review of Network Economics*, 11(3)
- Fehr, E., & Schmidt, K. M. (1999). A theory of fairness, competition, and cooperation*. *Quarterly Journal of Economics*, 114(3), 817-868.

- Fershtman, C., & Gandal, N. (2011). A brief survey of the economics of open source software. In S. N. Durlauf, & L. E. Blume (Eds.), *The new palgrave dictionary of economics* (Online ed.,) Palgrave Macmillan.
- Fudenberg, D., & Tirole, J. (1991). *Game theory* MIT Press.
- Galeotti, A., Goyal, S., Jackson, M. O., Vega-Redondo, F., & Yariv, L. (2010). Network games. *Review of Economic Studies*, 77(1), 218-244.
- Galeotti, A., & Goyal, S. (2010). The law of the few. *American Economic Review*, 100(4), 1468-1492.
- Gneezy, U., & Potters, J. (1997). An experiment on risk taking and evaluation periods. *The Quarterly Journal of Economics*, 112(2), 631-645.
- Goeree, J. K., Riedl, A., & Ule, A. (2009). In search of stars: Network formation among heterogeneous agents. *Games and Economic Behavior*, 67(2), 445-466.
- Goyal, S. (2007). *Connections: An introduction to the economics of networks* Princeton University Press.
- Jackson, M. O. (2008). *Social and economic networks* Princeton University Press.
- Katz, E., & Lazarsfeld, P. F. (1955). *Personal influence : The part played by people in the flow of mass communications*. Glencoe, Ill.: Free Press.
- Knigge, A., & Buskens, V. (2010). Coordination and cooperation problems in network good production. *Games*, 1(4), 357-380.
- Lakhani, K. R., & Wolf, R. G. (2005). Why hackers do what they do: Understanding motivation and effort in free/open source software projects. In J. Feller, B. Fitzgerald, S. A. Hissam & K. R. Lakhani (Eds.), *Perspectives on free and open source software* (pp. 3-21) MIT Press.
- Lazarsfeld, P. F., Berelson, B. R., & Gaudet, H. (1944). *The people's choice : How the voter makes up his mind in a presidential campaign*. New York: Columbia University Press.
- Lerner, J., & Tirole, J. (2002). Some simple economics of open source. *The Journal of Industrial Economics*, 50(2), 197-234.
- Mockus, A., Fielding, R. T., & Herbsleb, J. D. (2005). Two case studies of open source software development: Apache and mozilla. In J. Feller, B. Fitzgerald, S. A. Hissam & K. R. Lakhani (Eds.), *Perspectives on free and open source software* (pp. 163-209) MIT Press.
- Ortega, F., Gonzalez-Barahona, J. M., & Robles, G. (2008). On the inequality of contributions to wikipedia. *Hawaii International Conference on System Sciences, Proceedings of the 41st Annual*, 304-304.

- Restivo, M., & van de Rijt, A. (2012). Experimental study of informal rewards in peer production. *PloS One*, 7(3), e34358.
- Roberts, J. A., Hann, I. H., & Slaughter, S. A. (2006). Understanding the motivations, participation, and performance of open source software developers: A longitudinal study of the apache projects. *Management Science*, 52(7), 984-999.
- Robles, G., Gonzalez-Barahona, J. M., & Michlmayr, M. (2005). Evolution of volunteer participation in libre software projects: Evidence from debian. *Proceedings of the 1st International Conference on Open Source Systems*, 100-107.
- Rong, R., & Houser, D. (2012). *Growing stars: A laboratory experiment on network formation*. Unpublished manuscript.
- Rosenkranz, S., & Weitzel, U. (2012). Network structure and strategic investments: An experimental analysis. *Games and Economic Behavior*, 75(2), 898-920.
- Ule, A. (2005). *Exclusion and cooperation in networks*. (PhD thesis, Tinbergen Institute and Universiteit van Amsterdam).
- von Krogh, G., & von Hippel, E. (2006). The promise of research on open source software. *Management Science*, 52(7), 975-983.
- Voss, J. (2005). Measuring wikipedia. *International Conference of the International Society for Scientometrics and Informetrics*, 221-231.
- Wang, J., Suri, S., & Watts, D. J. (2012). Cooperation and assortativity with dynamic partner updating. *Proceedings of the National Academy of Sciences*, 109(36), 14363-14368.
- Zhang, X., & Zhu, F. (2011). Group size and incentives to contribute: A natural experiment at chinese wikipedia. *American Economic Review*, 101(4), 1601-1615.

Appendix A: Summary of the Instructions

Below is translation of the summary of the (Dutch) instructions, which was handed out on paper to the participants. All treatment dependent text is marked in italics. Full instructions for each of the treatments are available on www.creedexperiment.nl/superstars/extras.php.

Summary of the instructions

You can earn points during the experiment. These points are worth money. How many points (and hence how much money) you earn, depends on your own decisions, the decisions of others and luck. At the end of the experiment your earned points will be converted to euros and the earned amount will be paid to you in private. Your total earnings consist of the points you earn in the first part of the experiment (the lottery) and the sum of all points that you earn in the second part of the experiment. At the beginning of the second part you will receive a starting capital of 1000 points. This will also be added to your earnings.

Every 140 points are equivalent to 1 euro.

The second part of the experiment consists of 50 rounds. At the beginning of the experiment, you will randomly placed in a group of 8 participants. The composition of this group will not change during the experiment. In this group you will be randomly assigned a role. This role will be indicated by a letter: “A”, “B”, “C”, “D”, “E”, “F”, “G” or “H”. The letters “A”, “B”, “C”, “D”, “E”, “F”, “G” and “H” will thus refer to the same participant throughout the entire experiment.

Every round you can earn points by having ‘access’ to units of a good. The number of points that you earn depends on the number of units that you have access to. This is shown in the following table:

Units	0	1	2	3	4	5	6	7	8	9	10	10+i
Benefits	0	50	80	90	94	96	97	98	99	100	101	101+i

These benefits are the same for each role and all participants in this experiment. The table shows for instance that you earn 80 points if you have access to 2 units and that you earn 100 points if you have access to 9 units of the good.

There are three ways to access units of the good.

1. You buy units of the good yourself.
2. You make a 'link' to another participant. In this case you have access to the units that the other participant has bought and the other participant has access to your purchases. How you make a link will be explained in a moment.
3. Another participant makes a link to you. In this case you have access to the units that the other participant has bought and the other participant has access to your purchases.

If you make a link to another participant and this other participant also makes a link to you, you will only access the entire purchase of the other participant once.

In addition, you can earn points if other participants make a link to you. For each link that another participant makes to you, you will receive 12 points.

Buying units and making links is costly. The cost of making a link is the same for all roles but the costs of buying units differ by role.

The cost of making a link is 20 points for each role. The cost of making a link are only paid by the participant who makes the link. Every round, you can maximally make one link to each of the other roles. This means that you can maximally make 7 links.

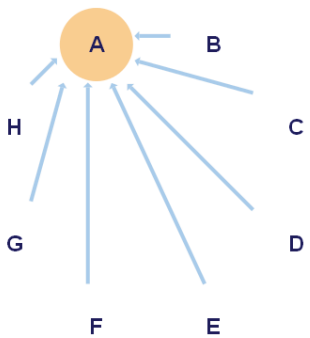
The costs of buying units differ by role. The costs of buying units of the good are given in the table below. Every round, you can maximally buy 5 units of the good.

Role	A	B	C	D	E	F	G	H
Cost per unit	22	23	24	25	26	27	28	29
Cost per link	20	20	20	20	20	20	20	20
Benefits per link to your role	12	12	12	12	12	12	12	12

Appendix B: Screen shots

You are in role A

HISTORY



Results of round 22

role	acquisition	link to
A	3	
B	0	A
C	0	A
D	0	A
E	0	A
F	0	A
G	0	A
H	0	A

Your earnings in round 22 are **108** points

CURRENT DECISION

Your decision in round 23

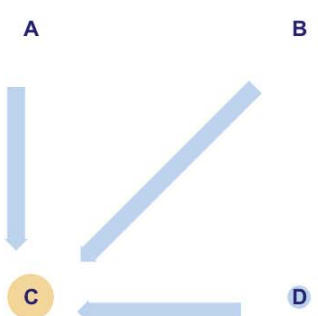
Indicate to whom you want to make a link:

B
 C
 D
 E
 F
 G
 H

Indicate how many units you want to buy:

units

RESULTS



role	acquisition	link to
A	0	C
B	0	C
C	2	C
D	1	C

Round 12 of 50 is over

You have made no links and A, B and D made a link to you.

This means that you have access to the acquisitions of A, B and D and your own acquisition.

In total you have access to 3 units, your benefits of this are 90 points.
 3 participant(s) made a link to you. Your benefits from this are 36 points.
 De costs of making 0 link(s) and the acquisition of 2 units are 54 points.

Toure total earnings are **72** points in this round.

You have earned 3231 points in total.

Appendix C: Repeated game equilibria

In this Appendix we analyze the finitely repeated game. As usual, this game has a plethora of repeated game equilibria, including repetition of the stage-game equilibrium in each of the T periods. Here, we are interested in equilibria in which players earn higher payoffs than when they repeatedly play a stage-game equilibrium. We focus on equilibria in which an efficient network is consistently formed. In addition, we restrict our attention to strict subgame perfect equilibria. In the GG model, efficient networks are all superstars. We denote the efficient investment level by the core player in the superstar by \tilde{y} .

One way to support efficient equilibria is by the use of punishment strategies. Like Benoit and Krishna (1985) we consider the use of ‘optimal punishments’. The optimal punishment strategy yields the worst possible payoff for the punished player i that is feasible in a subgame perfect equilibrium. The average payoff for the punished player i from the optimal punishment in K periods of punishment is denoted by $w_i(K)/K$, where $w_i(K)$ is the total payoff of the punished player in these K periods. Benoit and Krishna show that this payoff is bounded by:

$$(C.1) \quad v_i \leq w_i(K)/K \leq w_i(1),$$

where v_i is i 's *minmax* payoff and $w_i(1)$ her worst possible payoff in a stage-game equilibrium.

Proposition 1: *In any of our experimental games, superstars can be supported as part of a subgame perfect equilibrium until period $T - 2$.*

Proof. One way to support superstars is by rotating the core position. Suppose that all players observe a perfectly correlated signal θ_t at the beginning of each period t . This signal is an independent draw from the set $\{1, \dots, n\}$. Each integer is drawn with equal probability.²⁶ Consider the strategy profile s^* , where each player's strategy s_i^* adheres to:

²⁶ Superstars can also be supported until period $T - 2$ if the core position is rotated deterministically, i.e. if there is a sequence $\{1, 2, \dots, n - 1, n, 1, 2, \dots\}_{t=1}^{t=T}$ that determines which player will be in the core. This proof is more involved however. For expositional reasons, we chose to include the ‘sunspot’ equilibrium as our main point is that by rotating, superstars can be part of a repeated game equilibrium in each of our treatments.

“In each period, the player to fill the core position is determined by the draw of θ_t , i.e. if $\theta_t = j$, player j will be in the core position in period t . In a period, the core player does not form any links, and all other players only form a link to this core player. In the first $T-Q$ periods the core player invests the efficient level \tilde{y} and in the final Q periods the core player invests the stage-game Nash level \hat{y} . If some player i deviates in round t , play switches to the punishment regime and the deviating player will be punished in rounds $t + 1$ to T by the optimal punishment strategy.”

The strategy profile s^* constitutes a subgame perfect equilibrium if it satisfies the one-stage-deviation principle. That is, the strategy profile s^* is a subgame perfect equilibrium if and only if :

$$(C.2) \quad \pi_i(s_i^*, s_{-i}^*) > \pi_i(s_i', s_{-i}^*) \quad \forall i \in N, \forall s_i',$$

where s_i' indicates a deviant strategy of player i , which differs from the equilibrium strategy s^* only in period t and conforms to s^* thereafter (see for instance, Theorem 4.1 in Fudenberg and Tirole (1991, p.109) for a proof).

Let π_C^S and π_P^S denote the stage-game payoff of being, respectively, in the core or the periphery of the efficient superstar. Likewise, we write π_C^N and π_P^N for the payoff of being, respectively, in the core or the periphery of the Nash star.

In s^* , the final Q periods consist of a sequence of stage-game equilibria, hence, a profitable one-stage-deviation can only exist in the first $T - Q$ periods. First consider deviations by the core in these periods. The optimal deviation by the core player in a superstar is to invest in the Nash level \hat{y} which implies that a Nash star would result. Hence, by deviating in period $t \leq T - Q$, the sum of payoffs in periods t to T of core player i will be:

$$(C.3) \quad \pi_i(s_i', s_{-i}^*) = \pi_C^N + (T - t) \frac{w_i(T-t)}{T-t}.$$

The expected payoff from following s_i^* is $\bar{\pi}^S = \frac{n-1}{n} \pi_P^S + \frac{1}{n} \pi_C^S$ in each of the first $T - Q$ periods and $\bar{\pi}^N = \frac{n-1}{n} \pi_P^N + \frac{1}{n} \pi_C^N$ in each of the final Q periods. In every period $t \leq T - Q$, the core player in the superstar will not deviate if:

$$(C.4) \quad \pi_C^S + (T - Q - t)\bar{\pi}^S + Q\bar{\pi}^N > \pi_C^N + (T - t)\frac{w_i(T-t)}{T-t}.$$

As $\bar{\pi}^S > \bar{\pi}^N > w_i(1) \geq \frac{w_i(T-t)}{T-t}$, it suffices to consider only period $t = T - Q$. Using this, we can rewrite (C.4) to:

$$(C.5) \quad Q > \frac{\pi_C^N - \pi_C^S}{\bar{\pi}^N - w_i(Q)/Q},$$

which gives a condition for the minimal length of the ‘Nash phase’ that is needed to avoid deviation by the core. As $\bar{\pi}^N > w_i(1) \geq \frac{w_i(T-t)}{T-t}$ and $\pi_C^N > \pi_C^S$, the right hand side of (C.5) is always positive.

If $b = 0$, we have $v_i = w_i(1) = \pi_C^N$. Using this in (C.5), we can compute for our game that $Q \geq 1$ if $n = 4, b = 0$ and $Q \geq 2$ if $n = 8, b = 0$.²⁷ Similarly, in our games with social benefits, the worst stage-game equilibrium payoff is the periphery position in the Nash 2-hub. Using this as the average punishment payoff $w_i(Q)/Q$ in case of deviation, we find that $Q \geq 1$ if $n = 4, b = 12$ and $Q \geq 2$ if $n = 8, b = 12$. This shows that no core player will deviate in the first $T - Q$ periods for the above bounds on Q .

Now consider deviations by a periphery player j . Note that within a period, the periphery player best responds by linking to the core in the superstar. If a periphery player deviates, she will be punished in all $T - t$ remaining periods. The expected future payoffs in case of deviation are thus $w_i(T - t)$. As $\bar{\pi}^S > \bar{\pi}^N > w_i(1) \geq \frac{w_i(T-t)}{T-t}$, the expected future payoff of adhering to the strategy s_j^* is strictly larger than the future payoffs of deviation. Hence, no periphery player will deviate, which shows that the strategy profile s^* constitutes a subgame perfect equilibrium. Q.E.D.

Given that in practice rotation schemes are hardly implemented, we now focus on equilibria where the same network structure is played in all periods. We divide the game in two phases: a ‘superstar phase’ where a superstar with a fixed core is played in the first $T - Q$ periods, and an ‘end phase’ which consist of the final Q periods.

²⁷ More specifically, if $n = 4, b = 0$ we have $Q > \frac{2}{3}$ and if $n = 8, b = 0$ we have $Q > \frac{10}{7}$.

Proposition 2: *If we only allow strategies where (1) on the equilibrium path the linking decision of each player does not change and where (2) within each phase the investment decision of each player does not change, then superstars can only be supported in the presence of social benefits.*

Proof. The first condition in Proposition 2 implies that all network structures on the equilibrium path should be the same as a superstar's structure, i.e. all networks should be periphery-sponsored stars where a fixed player i is in the core in every period. The second condition in Proposition 2 implies that the end phase should consist of the repeated play of a specific stage-game equilibrium, as both the linking and investment decisions are not allowed to change. In combination, the two conditions result in the repeated play of the Nash star in the final phase, as this is the only stage-game equilibrium that is a periphery-sponsored star.²⁸ Hence, in this type of equilibrium, the efficient superstar is played in periods 1 to $T - Q$ and the Nash star is played in the final Q periods. In every period, the same player i fills the core position. Now, consider the following strategy profile s^* :

“In each period, the core position is filled by the same player i . This player does not form any link, and all other players only form a link to this core player. In the first $T - Q$ periods the core player invests the efficient level \tilde{y} and in the final Q periods the core player invests the stage-game Nash level \hat{y} . If some player j deviates in round t , play switches to the punishment regime and the deviating player will be punished in rounds $t + 1$ to T by the optimal punishment strategy.”

First, consider deviations by the core player. As before, the optimal deviation by the core in the superstar phase is to lower her investment to \hat{y} , which results in a Nash star. Hence, the core will not deviate in the first $T - Q$ periods if:

$$(C.6) \quad (T - Q - t + 1)\pi_C^S + Q\pi_C^N > \pi_C^N + (T - t) \frac{w_i(T-t)}{T-t},$$

²⁸ A less stringent requirement would be to impose no additional restrictions on the networks in the final Q rounds, except that the proposed equilibrium should be subgame perfect. In this case, superstars can be sustained for some time in the game without social benefits, but only for the first 36 periods in groups of four and the first 27 periods in groups of eight. Furthermore, the final Q periods would again require changes of the network and involve networks that are not stage-game equilibria. Our aim here is to describe equilibria that avoid such coordination problems.

and will have a profitable deviation if the reverse holds. If $\pi_C^S < \frac{w_i(T-t)}{T-t}$, it is sufficient to consider only period $t = 1$, while if $\pi_C^S > \frac{w_i(T-t)}{T-t}$ it is sufficient to consider only the final period of the superstar phase, i.e. $t = T - Q$.

First consider the game without social benefits. As before, $\frac{w_i(T-t)}{T-t} = \pi_C^N$. As $\pi_C^N > \pi_C^S$, we consider period $t = 1$. Using this in (C.6) reduces the condition to $\pi_C^S > \pi_C^N$ which is not true. Thus, the reverse sign holds in (C.6) and a profitable deviation exists for the core player. Hence, the strategy profile s^* does not constitute a subgame perfect equilibrium in the absence of social benefits.

Now consider the game with social benefits. With social benefits $\pi_C^S > w(1) \geq \frac{w_i(T-t)}{T-t}$, which implies that it is sufficient to consider the last period of the superstar phase.²⁹ Using this in eq. (C.6) yields:

$$(C.7) \quad Q > \frac{\pi_C^N - \pi_C^S}{\pi_C^N - w_i(Q)/Q},$$

which provides a condition for the minimal length of the Nash phase, as in condition (C.5). We can substitute and rewrite (C.7) as:

$$(C.8) \quad b > \frac{1}{n-1} \left(\frac{(\tilde{y} - \hat{y})c_i - (f(\tilde{y}) - f(\hat{y}))}{Q} + \frac{w_i(Q)}{Q} - (f(\hat{y}) - c_i\hat{y}) \right).$$

The right hand side of (C.8) is strictly positive, as $\frac{w_i(Q)}{Q} \geq v_i = (f(\hat{y}) - c_i\hat{y})$ and $(\tilde{y} - \hat{y})c_i > (f(\tilde{y}) - f(\hat{y}))$. In other words, we need positive social benefits to sustain a superstar in this type of equilibrium.

For our game, we can use $\frac{w_i(Q)}{Q} \leq w_i(1)$ and the fact that the lowest stage-game equilibrium payoff for the treatments with social benefits is obtained in the periphery of the Nash 2-hub. As the payoff in the periphery of the Nash 2-hub is strictly smaller than π_C^S , condition (C.7) implies that $Q \geq 1$ in all treatments with social benefits.³⁰ In the final Q

²⁹ This holds if $(n-1)b > w_i(1) + c_i\tilde{y} - f(\tilde{y})$, hence when the social benefits or the number of players are sufficiently large. For our experimental game, it holds for all roles in all treatments, except for role D in treatment $n = 4, b = 12$.

³⁰ Choosing $Q = T - 1$ in (C.8) shows that we need $b > 2.09$ if $n = 4$ and $b > 0.66$ if $n = 8$ to sustain a superstar with the low cost player A as the core. If we set $Q = 1$, we obtain $b > 6.33$ if $n = 4$ and $b > 4.86$ if $n = 8$.

periods, the Nash star will be played, which is a stage-game Nash network. Hence, the core player has no profitable one-stage-deviation.

Finally, consider the periphery players in the game with social benefits. Again, within a period, the periphery players best respond by linking to the core in the superstar. If a periphery player deviates, she will be punished in all $T - t$ remaining periods. The average future payoffs in case of deviation are thus $\frac{w_i(T-t)}{T-t}$. As $\pi_P^S > \pi_P^N \geq w_i(1) \geq \frac{w_i(T-t)}{T-t}$, the future payoffs of adhering to the strategy are strictly larger than the future payoffs of deviation. Hence, no periphery player will deviate, which shows that the strategy profile s^* constitutes a subgame perfect equilibrium in the game with social benefits, and that superstars can be sustained until period $T - 1$. Q.E.D.

Edicions / Issues:

95/1	<i>Productividad del trabajo, eficiencia e hipótesis de convergencia en la industria textil-confección europea</i> Jordi López Sintas
95/2	<i>El tamaño de la empresa y la remuneración de los máximos directivos</i> Pedro Ortín Ángel
95/3	<i>Multiple-Sourcing and Specific Investments</i> Miguel A. García-Cestona
96/1	<i>La estructura interna de puestos y salarios en la jerarquía empresarial</i> Pedro Ortín Ángel
96/2	<i>Efficient Privatization Under Incomplete Contracts</i> Miguel A. García-Cestona Vicente Salas-Fumás
96/3	<i>Institutional Imprinting, Global Cultural Models, and Patterns of Organizational Learning: Evidence from Firms in the Middle-Range Countries</i> Mauro F. Guillén (The Wharton School, University of Pennsylvania)
96/4	<i>The relationship between firm size and innovation activity: a double decision approach</i> Ester Martínez-Ros (Universitat Autònoma de Barcelona) José M. Labeaga (UNED & Universitat Pompeu Fabra)
96/5	<i>An Approach to Asset-Liability Risk Control Through Asset-Liability Securities</i> Joan Montllor i Serrats María-Antonia Tarrazón Rodón
97/1	<i>Protección de los administradores ante el mercado de capitales: evidencia empírica en España</i> Rafael Crespí i Cladera
97/2	<i>Determinants of Ownership Structure: A Panel Data Approach to the Spanish Case</i> Rafael Crespí i Cladera
97/3	<i>The Spanish Law of Suspension of Payments: An Economic Analysis From Empirical Evidence</i> Esteban van Hemmen Almazor
98/1	<i>Board Turnover and Firm Performance in Spanish Companies</i> Carles Gispert i Pellicer
98/2	<i>Libre competencia frente a regulación en la distribución de medicamentos: teoría y evidencia empírica para el caso español</i> Eva Jansson
98/3	<i>Firm's Current Performance and Innovative Behavior Are the Main Determinants of Salaries in Small-Medium Enterprises</i>

	Jordi López Sintas y Ester Martínez Ros
98/4	<i>On The Determinants of Export Internalization: An Empirical Comparison Between Catalan and Spanish (Non-Catalan) Exporting Firms</i> Alex Rialp i Criado
98/5	<i>Modelo de previsión y análisis del equilibrio financiero en la empresa</i> Antonio Amorós Mestres
99/1	<i>Avaluació dinàmica de la productivitat dels hospitals i la seva descomposició en canvi tecnològic i canvi en eficiència tècnica</i> Magda Solà
99/2	<i>Block Transfers: Implications for the Governance of Spanish Corporations</i> Rafael Crespí, and Carles Gispert
99/3	<i>The Asymmetry of IBEX-35 Returns With TAR Models</i> M. ^a Dolores Márquez, César Villazón
99/4	<i>Sources and Implications of Asymmetric Competition: An Empirical Study</i> Pilar López Belbeze
99/5	<i>El aprendizaje en los acuerdos de colaboración interempresarial</i> Josep Rialp i Criado
00/1	<i>The Cost of Ownership in the Governance of Interfirm Collaborations</i> Josep Rialp i Criado, i Vicente Salas Fumás
00/2	<i>Reasignación de recursos y resolución de contratos en el sistema concursal español</i> Stefan van Hemmen Alamazor
00/3	<i>A Dynamic Analysis of Intrafirm Diffusion: The ATMs</i> Lucio Fuentelsaz, Jaime Gómez, Yolanda Polo
00/4	<i>La Elección de los Socios: Razones para Cooperar con Centros de Investigación y con Proveedores y Clientes</i> Cristina Bayona, Teresa García, Emilio Huerta
00/5	<i>Inefficient Banks or Inefficient Assets?</i> Emili Tortosa-Ausina
01/1	<i>Collaboration Strategies and Technological Innovation: A Contractual Perspective of the Relationship Between Firms and Technological Centers</i> Alex Rialp, Josep Rialp, Lluís Santamaria
01/2	<i>Modelo para la Identificación de Grupos Estratégicos Basado en el Análisis Envoltante de Datos: Aplicación al Sector Bancario Español</i> Diego Prior, Jordi Surroca
01/3	<i>Seniority-Based Pay: Is It Used As a Motivation Device?</i> Alberto Bayo-Moriones
01/4	<i>Calidad de Servicio en la Enseñanza Universitaria: Desarrollo y Validación de una Escala de Medida.</i>

	Joan-Lluís Capelleras, José M. ^a Veciana
01/5	<i>Enfoque estructural vs. recursos y capacidades: un estudio empírico de los factores clave de éxito de las agencias de viajes en España.</i> Fabiola López-Marín, José M. ^a Veciana
01/6	<i>Opción de Responsabilidad Limitada y Opción de Abandonar: Una Integración para el Análisis del Coste de Capita.</i> Neus Orgaz
01/7	<i>Un Modelo de Predicción de la Insolvencia Empresarial Aplicado al Sector Textil y Confección de Barcelona (1994-1997).</i> Antonio Somoza López
01/8	<i>La Gestión del Conocimiento en Pequeñas Empresas de Tecnología de la Información: Una Investigación Exploratoria.</i> Laura E. Zapata Cantú
01/9	<i>Marco Institucional Formal de Creación de Empresas en Catalunya: Oferta y Demanda de Servicios de Apoyo</i> David Urbano y José María Veciana.
02/1	<i>Access as a Motivational Device: Implications for Human Resource Management.</i> Pablo Arocena, Mikel Villanueva
02/2	<i>Efficiency and Quality in Local Government. The Case of Spanish Local Authorities</i> M.T. Balaguer, D. Prior, J.M. Vela
02/3	<i>Single Period Markowitz Portfolio Selection, Performance Gauging and Duality: A variation on Luenberger's Shortage Function</i> Walter Briec, Kristiaan Kerstens, Jean Baptiste Lesourd
02/4	<i>Innovación tecnológica y resultado exportador: un análisis empírico aplicado al sector textil-confección español</i> Rossano Eusebio, Àlex Rialp Criado
02/5	<i>Caracterización de las empresas que colaboran con centros tecnológicos</i> Lluís Santamaria, Miguel Ángel García Cestona, Josep Rialp
02/6	<i>Restricción de crédito bancario en economías emergentes: el caso de la PYME en México</i> Esteban van Hemmen Almazor
02/7	<i>La revelación de información obligatoria y voluntaria (activos intangibles) en las entidades de crédito. Factores determinantes.</i> Gonzalo Rodríguez Pérez
02/8	<i>Measuring Sustained Superior Performance at the Firm Level</i> Emili Grifell - Tatjé, Pilar Marquès - Gou
02/9	<i>Governance Mechanisms in Spanish Financial Intermediaries</i> Rafel Crespi, Miguel A. García-Cestona, Vicente Salas
02/10	<i>Endeudamiento y ciclos políticos presupuestarios: el caso de los ayuntamientos</i>

	<i>catalanes</i> Pedro Escudero Fernández, Diego Prior Jiménez
02/11	<i>The phenomenon of international new ventures, global start-ups, and born-globals: what do we know after a decade (1993-2002) of exhaustive scientific inquiry?</i> Àlex Rialp-Criado, Josep Rialp-Criado, Gary A. Knight
03/1	<i>A methodology to measure shareholder value orientation and shareholder value creation aimed at providing a research basis to investigate the link between both magnitudes</i> Stephan Hecking
03/2	<i>Assessing the structural change of strategic mobility. Determinants under hypercompetitive environments</i> José Ángel Zúñiga Vicente, José David Vicente Lorente
03/3	<i>Internal promotion versus external recruitment: evidence in industrial plants</i> Alberto Bayo-Moriones, Pedro Ortín-Ángel
03/4	<i>El empresario digital como determinante del éxito de las empresas puramente digitales: un estudio empírico</i> Christian Serarols, José M. ^a Veciana
03/5	<i>La solvencia financiera del asegurador de vida y su relación con el coste de capital</i> Jordi Celma Sanz
03/6	<i>Proceso del desarrollo exportador de las empresas industriales españolas que participan en un consorcio de exportación: un estudio de caso</i> Piedad Cristina Martínez Carazo
03/7	<i>Utilidad de una Medida de la Eficiencia en la Generación de Ventas para la Predicción del Resultado</i> María Cristina Abad Navarro
03/8	<i>Evaluación de fondos de inversión garantizados por medio de portfolio insurance</i> Sílvia Bou Ysàs
03/9	<i>Aplicación del DEA en el Análisis de Beneficios en un Sistema Integrado Verticalmente Hacia Adelante</i> Héctor Ruiz Soria
04/1	<i>Regulación de la Distribución Eléctrica en España: Análisis Económico de una Década, 1987-1997</i> Leticia Blázquez Gómez; Emili Grifell-Tatjé
04/2	<i>The Barcelonnettes: an Example of Network-Entrepreneurs in XIX Century Mexico. An Explanation Based on a Theory of Bounded Rational Choice with Social Embeddedness.</i> Gonzalo Castañeda
04/3	<i>Estructura de propiedad en las grandes sociedades anónimas por acciones. Evidencia empírica española en el contexto internacional</i> Rabel Crespi; Eva Jansson

05/1	<i>IFRS Adoption in Europe: The Case of Germany.</i> Soledad Moya, Jordi Perramon, Anselm Constans
05/2	<i>Efficiency and environmental regulation: a 'complex situation'</i> Andrés J. Picazo-Tadeo, Diego Prior
05/3	<i>Financial Development, Labor and Market Regulations and Growth</i> Raquel Fonseca, Natalia Utrero
06/1	<i>Entrepreneurship, Management Services and Economic Growth</i> Vicente Salas Fumás, J. Javier Sánchez Asín
06/2	<i>Triple Bottom Line: A business metaphor for a social construct</i> Darrel Brown, Jesse Dillard, R. Scott Marshall
06/3	<i>El Riesgo y las Estrategias en la Evaluación de los Fondos de Inversión de Renta Variable</i> Sílvia Bou
06/4	<i>Corporate Governance in Banking: The Role of Board of Directors</i> Pablo de Andrés Alonso, Eleuterio Vallelado González
06/5	<i>The Effect of Relationship Lending on Firm Performance</i> Judith Montoriol Garriga
06/6	<i>Demand Elasticity and Market Power in the Spanish Electricity Market</i> Aitor Ciarreta, María Paz Espinosa
06/7	<i>Testing the Entrepreneurial Intention Model on a Two-Country Sample</i> Francisco Liñán, Yi-Wen Chen
07/1	<i>Technological trampolines for new venture creation in Catalonia: the case of the University of Girona</i> Andrea Bikfalvi, Christian Serarols, David Urbano, Yancy Vaillant
07/2	<i>Public Enterprise Reforms and Efficiency in Regulated Environments: the Case of the Postal Sector</i> Juan Carlos Morales Piñero, Joaquim Vergés Jaime
07/3	<i>The Impact of Prevention Measures and Organisational Factors on Occupational Injuries</i> Pablo Arocena, Imanol Núñez, Mikel Villanueva
07/4	<i>El impacto de la gestión activa en la performance de los fondos de inversión de renta fija</i> Sílvia Bou Ysàs
07/5	<i>Organisational status and efficiency: The case of the Spanish SOE "Paradores"</i> Magda Cayón, Joaquim Vergés
07/6	<i>Longitudinal Analysis of Entrepreneurship and competitiveness dynamics in Latin</i>

	<i>America</i>
	José Ernesto Amorós, Óscar Cristi
08/1	<i>Earnings Management and cultural values</i>
	Kurt Desender, Christian Castro, Sergio Escamilla
08/2	<i>Why do convertible issuers simultaneously repurchase stock? An arbitrage-based explanation</i>
	Marie Dutordoir, Patrick Verwijmeren
08/3	<i>Entrepreneurial intention, cognitive social capital and culture: empirical analysis for Spain and Taiwan</i>
	Francisco Liñán, Francisco Santos, José L. Roldán
08/4	<i>From creative ideas to new emerging ventures: the process of identification and exploitation among finnish design entrepreneurs</i>
	Henrik Tötterman
08/5	<i>Desempeño de la Política Comercial Pública en España</i>
	Manuel Sánchez, Ignacio Cruz, David Jiménez
08/6	<i>Gender Effects on Performance in Bulgarian Private Enterprises</i>
	Desislava Yordanova
08/7	Entorno e iniciativa emprendedora: una perspectiva internacional
	Claudia Álvarez, David Urbano
09/1	<i>Narrating Urban Entrepreneurship: A Matter of Imagineering?</i>
	Chris Steyaert, Timon Beyes
09/2	<i>Organizational Configurations of Strategic Choices and Strategic Management Accounting</i>
	Simon Cadez, Chris Guilding
09/3	<i>Agency Cost of Government Ownership: A study of Voluntary Audit Committee Formation in China</i>
	David Hillier, Charlie X. Cai, Gaoliang Tian, Qinghua Wu
09/4	<i>Public Policy for Entrepreneurship and Innovation: Impact in Managed and Entrepreneurial Economies</i>
	Karen Murdock
09/5	<i>Glocalization as a Generic Entrepreneurial Strategy</i>
	Bengt Johansson
09/6	<i>Assesing Advertising Efficiency: Does the Internet Play a Role?</i>
	Albena Pergelova, Diego Prior, Josep Rialp
09/7	<i>Start-up Conditions and the Performance of Women – and Men- Controlled Businesses in Manufacturing Industries</i>
	Otilia Driga, Diego Prior

10/1	<i>Devolution Dynamics of Spanish Local Government</i>
	Maria Teresa Balaguer-Coll, Diego Prior, Emili Tortosa-Ausina
10/2	<i>Los derivados financieros como herramienta para evaluar la reforma laboral: una aproximación binomial</i>
	Sílvia Bou, Albert Hernández, Carlota Linares
10/3	<i>Environmental Factors And Social Entrepreneurship</i>
	Elisabeth Ferri, David Urbano
10/4	<i>Accounting Conservatism and Firm Investment Efficiency</i>
	Beatriz García, Juan Manuel García, Fernando Penalva
10/5	<i>The Complementarity Between Segment Disclosure and Earnings Quality, and its Effect on Cost of Capital</i>
	Belén Blanco, Juan M. García, Josep A. Tribó
10/6	<i>Revisiting the Size-R&D Productivity Relation: Introducing the Mediating Role of Decision-Making Style on the Scale and Quality of Innovative Output</i>
	José Lejarra, Ester Martínez
10/7	<i>Nuevos y viejos criterios de rentabilidad que concuerdan con el criterio del Valor Actual Neto</i>
	Emilio Padilla, Joan Pascual
10/8	<i>A cognitive attempt to understanding female entrepreneurial potential: the role of social norms and culture</i>
	Francisco Liñán, Muhammad A. Roomi , Francisco J. Santos
11/1	<i>Behavioral Aspects of Investment Fund's Markets: Are Good Managers Lucky or Skilled?</i>
	Sílvia Bou, Magda Cayón
11/2	<i>Place Marketing Performance: Benchmarking European Cities as Business Destinations.</i>
	Albena Pergelova
11/3	<i>Portfolio Selection with Skewness: A Comparison of Methods and a Generalized Two Fund Separation Result</i>
	Walter Briec, Kristiaan Kerstens, Ignace Van de Woestyne
11/4	<i>Can organizational commitment be experienced by individuals pursuing contemporary career paths?</i>
	Mihaela Enache, Jose M. Sallan, Pep Simo and Vicenc Fernandez
11/5	<i>Social Capital and the Equilibrium Number of Entrepreneurs.</i>
	Vicente Salas-Fumás, J.Javier Sanchez-Asin
11/6	<i>Determinants of Acquisition Completion: A Relational Perspective.</i>
	Ruth V. Aguilera, John C. Dencker
11/7	<i>SME's Environmental CSR Investment: Evaluation, Decision and Implication.</i>
	F. Merlinda

12/1	<i>Debt Enforcement and Relational Contracting.</i>
	Martin Brown, Marta Serra-García
12/2	<i>Stockholder Conflicts and Dividends</i>
	Janis Berzins, Øyvind Bøhren, Bogdan Stacescu
12/3	<i>The “Death of Environmentalism” Debates: Forging Links Between SEA and Civil Society.</i>
	Judy Brown, Jesse Dillard
12/4	<i>Evaluación y rediseño de la red pública educativa. Un análisis centralizado.</i>
	Laura López, Diego Prior
12/5	<i>Organizational resources and intrapreneurial activities: A cross-country study.</i>
	Andreu Turró, David Urbano
12/6	<i>The Hidden Costs of Hidden Debt.</i>
	Johan Almenberg and Arteshes Karapetyan
12/7	<i>The Effects of Walking while Working on Productivity and Health: A Field Experiment.</i>
	Avner Ben-Ner, Darla Flint Paulson, Gabriel Koepp, James Levine
12/8	<i>How does Ownership Structure influence Bank Risk? Analyzing the Role of Managerial Incentives.</i>
	Mónica López-Puertas Lamy
13/1	<i>Studying the Micro-Angels Approach to Micro-Investment decisions.</i>
	Glòria Estapé Dubreuil, Arvind Ashta, Jean-Pierre Hédou
13/2	<i>Multimarket Contact Externalities: The Effect of Rival’s Multimarket Contacts on Focal Firm Performance.</i>
	Jaime Gómez, Raquel Orcos, Sergio Palomas
13/3	<i>Market Rewards to Patterns of Increasing Earning: Do Cash Flow Patterns, Accruals Manipulation and Real Activities Manipulation Matter?</i>
	Su-Ping Liu, Juan Manuel García Lara
13/4	<i>The Price of Luck</i>
	Sílvia Bou, Magda Cayón
13/5	<i>Goal Setting and Monetary Incentives: When Large Stakes Are Not Enough.</i>
	Juan Carlos Gómez-Miñambres, Brice Corgnet i Roberto Hernán González
13/6	<i>Superstars Need Social Benefits: An Experiment on Network Formation</i>
	Arthur Schram, Boris van Leeuwen i Theo Offerman