

Mixtures of ultracold atoms in one-dimensional disordered potentialsFrançois Crépin,^{1,*} Gergely Zaránd,^{2,3} and Pascal Simon¹¹*Laboratoire de Physique des Solides, CNRS UMR-8502 Université Paris Sud, F-91405 Orsay Cedex, France*²*Freie Universität Berlin, Fachbereich Physik, Arnimallee 14, D-14195 Berlin, Germany*³*MTA-BME Quantum Phases Lendulet Research Group, Budapest University of Technology and Economics, Budafoki ut 8, H-1521, Hungary*

(Received 11 November 2011; published 21 February 2012)

We study interacting one-dimensional two-component mixtures of cold atoms in a random potential, and extend the results reported earlier [*Phys. Rev. Lett.* **105**, 115301 (2010)]. We construct the phase diagram of a disordered Bose-Fermi mixture as a function of the strength of the Bose-Bose and Bose-Fermi interactions, and the ratio of the bosonic sound velocity and the Fermi velocity. Performing renormalization group and variational calculations, three phases are identified: (i) a fully delocalized two-component Luttinger liquid with superfluid bosons and fermions, (ii) a fully localized phase with both components pinned by disorder, and (iii) an intermediate phase where fermions are localized but bosons are superfluid. Within the variational approach, each phase corresponds to a different level of replica symmetry breaking. In the fully localized phase we find that the bosonic and fermionic localization lengths can largely differ. We also compute the long-wavelength asymptotic behavior of the momentum distribution as well as that of the structure factor of the atoms (both experimentally accessible), and discuss how the three phases can be experimentally distinguished.

DOI: [10.1103/PhysRevA.85.023625](https://doi.org/10.1103/PhysRevA.85.023625)

PACS number(s): 67.85.Pq, 67.60.Fp, 71.10.Pm, 71.23.-k

I. INTRODUCTION

Since the original work of Anderson [1] on the conductivity of electrons in a disordered crystal, the topic of localization has been of major importance in the field of condensed matter. Recent experiments on ultracold atomic gases have shed a different light on the subject [2] as they strive to systematically study such important factors as dimensionality and interactions [3–10]. The interest in the interplay between interactions and disorder dates back to Anderson's paper and it was later understood, thanks to the work of Mott on the metal-insulator transition [11], that, at least at zero temperature, the repulsion between electrons could actually favor localization by disorder, instead of preventing it. It was recently proposed that interactions can be responsible for a metal-insulator transition at finite temperature by allowing for a many-body mobility edge in systems where all single-particle states should be localized [12].

Interacting disordered bosonic systems have been first thoroughly studied in the context of dirty high temperature superconductors, where Cooper pairs were thought to behave as bosons in random media. The Bose-Hubbard model with random on-site chemical potentials is one of the most famous models studied in this context [13]. This particular model sustains a gapless but compressible disordered insulating phase, the so-called *Bose glass*. This phase is surrounded by incompressible Mott phases—associated with various commensurate fillings—and a compressible superfluid phase. Its existence has been confirmed by several numerical studies [14–17]. Bosons are peculiar when it comes to disorder since, in the absence of interactions, they should condense in a single lowest energy localized state at $T = 0$ temperature [18]. A tiny interaction, however, destroys this state and drives the system

to a glassy insulating phase, the aforementioned Bose glass phase. However, increasing the interaction further, a transition from this localized Bose glass phase to a superfluid phase takes place, as interactions eventually favor the overlap between the localized wave functions and hence restore the long-range phase coherence. This particular transition was intensively studied in the past few years [18–25] since it should be very relevant to current experiments on cold atoms [3,4,6,7].

The case of strong interactions is well described in one dimension, where one can use the harmonic fluid approach [26] to treat interactions and disorder on the same footing. Using the renormalization group (RG), Giamarchi and Schulz [18] showed that there exists a Kosterlitz-Thouless transition from a superfluid phase to a localized phase, corresponding to the pinning of the density wave by a weak random potential. In the harmonic fluid approach the transition occurs, both for bosons and for spinless fermions at a Luttinger parameter $K = 3/2$, that is, repulsive interactions for bosons and attractive interactions for spinless fermions. The localized phase lies in the region $K < 3/2$, the Luttinger parameter $K = 1$ corresponding to free fermions or hardcore bosons, respectively. The harmonic fluid approach was successfully tested in a recent cold atom experiment [27] probing the superfluid to Mott insulator transition, in a clean one-dimensional (1D) lattice. This system was indeed well described by the sine-Gordon model, that predicts the pinning of the density wave for strong enough interactions (in the clean case, $K = 2$) [28].

In the present paper, we focus on Bose-Fermi (BF) mixtures, but our results carry over to Bose-Bose or Fermi-Fermi cold atomic mixtures of incommensurate (imbalanced) densities in a 1D random potential. Three-dimensional (3D) two-component mixtures have been recently realized experimentally in various cold atomic systems [29–36], where the densities, but also mass ratios, and the sign and magnitude of interactions can be tuned. This versatility has fueled many analytical [37–49] and numerical studies on clean Bose-Fermi mixtures [45,46,49–55]. Most of these works, especially the

*francois.crepin@physik.uni-wuerzburg.de; present address: Institute for Theoretical Physics and Astrophysics, University of Wuerzburg.

analytical ones, focused on the 1D case where the harmonic fluid approaches [26,56,57] proved very fruitful. Though quantum statistics in one dimension is somewhat less relevant than in higher dimensions (see, however, Ref. [58]), these mixtures already present very rich phase diagrams and many possible instabilities have been found [37,38,42,43,45,47,49].

In this work, we primarily focus on the role of a weak disorder. More specifically, we analyze the effects of an external random potential on generic 1D two-component mixtures using the harmonic fluid (bosonization) method. We establish the phase diagram by combining a renormalization group approach with the so-called Gaussian variational method. This latter approach allows us to capture the glassy phases, which appear as saddle point solutions with broken replica symmetry.

From our perspective, the work of Giamarchi and Schulz on electrons in a random potential [18] thus focused on the nongeneric case of a balanced (commensurate) Fermi-Fermi mixture with equal Fermi velocities. In this special case, a perfect spin-charge separation occurs, back scattering plays also an important role, and several instabilities (pairing, charge density waves, spin density waves) compete with the disorder, leading to the rich phase diagram of Ref. [18].

Our approach—and thus our results—should also be contrasted to those of Ref. [59] on disordered Bose-Fermi mixtures: There, the system is placed on a random lattice, and the limit of very strong interactions is taken, so that various composite particles are created. This results in an effective Hamiltonian with random couplings for the composite particles, allowing for localized, metallic, and Mott-insulating phases of the latter. In contrast, we do not have an underlying lattice (or the densities are incommensurate with it), and we are not *a priori* in a situation where composite particles (such as pairs of bosons and fermions) are likely to form in the clean system.

We find that disorder-induced localization of one species (say fermions) can influence the localization of the other species through interactions. This is one of the main lessons of our analysis. We find typically three distinct phases: a delocalized phase described by a two-component Luttinger liquid, a hybrid phase where only one species is localized, and a fully localized phase where both components of the mixture are localized. The latter phase turns out to be the most interesting one since it is characterized by two interlaced localization length scales. The larger localization length depends on the smaller one through the interaction between both species and the ratio between the velocities of the density waves. In other words, though the two components of the mixture are localized, interactions between them still play an important role. This can be revealed through the dynamical structure factor of one of the species, which exhibits two peaks whose width are proportional to the inverse of the localization length of each species (see Figs. 13 and 17). From a more technical point of view, it is worth emphasizing that the fully localized phase is characterized by two-step replica symmetry breaking, which can be seen as a mathematical consequence of the interlacing localization length scales. We emphasize that our analysis relies on the assumption of weak uncorrelated disorder perturbing a two-component harmonic fluid. Although the Gaussian variational method seems to be successful in uncovering the strong disorder fixed points, the

underlying harmonic fluid approach might be unable to capture the physics in some regions of parameter space—in particular the fate of phase separation—in the presence of strong or correlated disorder.

The plan of the paper is as follows: In Sec. II, we describe the specific model under consideration, justify its derivation, and write its low-energy bosonized form. Then, in Sec. III, we proceed to study localization by disorder in a Bose-Fermi mixture, using RG and the variational method in replica space. Finally in Sec. IV, we compute correlation functions using the replica formalism. We analyze possible signatures of these phases in various observables such as the structure factors (related to Bragg scattering experiments) and the momentum distributions observed in time-of-flight experiments. Sec. V contains a nontechnical detailed summary of the results. The reader interested only in a snapshot of the results derived in this paper can jump directly to this section. Finally, details of the calculations are given in the appendices.

II. MODEL

A. Low-energy theory

In this section we present a phenomenological approach to the problem of localization in 1D Bose-Fermi (BF) mixtures, where we start from the low-energy hydrodynamic theory—a two-component Luttinger liquid—and then perturb it with a random chemical potential.

We start from a microscopic 1D Hamiltonian,

$$H = H_f + H_b + H_{\text{BF}} + H_{\text{ext}}, \quad (2.1)$$

with

$$H_f = \int dx \psi_f^\dagger(x) \left[-\frac{1}{2M_f} \frac{d^2}{dx^2} \right] \psi_f(x), \quad (2.2)$$

$$H_b = \int dx \psi_b^\dagger(x) \left[-\frac{1}{2M_b} \frac{d^2}{dx^2} \right] \psi_b(x) + \frac{U_b}{2} \int dx \psi_b^\dagger(x) \psi_b^\dagger(x) \psi_b(x) \psi_b(x), \quad (2.3)$$

$$H_{\text{BF}} = U_{\text{BF}} \int dx \rho_b(x) \rho_f(x), \quad (2.4)$$

$$H_{\text{ext}} = \int dx [V_f(x) \rho_f(x) + V_b(x) \rho_b(x)]. \quad (2.5)$$

Notice that we have set $\hbar = 1$ in the whole paper. A discussion on the derivation of this Hamiltonian from a real 3D experimental system can be found in Refs. [43,48]. Here, $\psi_f^\dagger(x)$ and $\psi_f(x)$ [$\psi_b^\dagger(x)$ and $\psi_b(x)$] are creation and annihilation operators for spinless fermions [bosons] while $\rho_f(x) = \psi_f^\dagger(x) \psi_f(x)$ and $\rho_b(x) = \psi_b^\dagger(x) \psi_b(x)$ are the density operators. H_{ext} represents a random chemical potential shift. The overall bosonic and fermionic chemical potentials do not appear in the Hamiltonian, since we rather take the bosonic and fermionic densities as fixed. Furthermore, in the spirit of local density approximation, we do not include a harmonic trapping potential either, certainly present in real cold atom experiments. We chose not to work with an underlying lattice and therefore do not include umklapp scattering processes that could lead to gapped phases.

This being said, we now define the distributions and correlation functions of the random potentials V_f and V_b . In most experimental setups the same external potential will couple to both bosons and fermions, and it is safe to assume that V_f and V_b are indeed proportional. Let us define an optical potential V such that $V_f = \alpha_f V$ and $V_b = \alpha_b V$. We will take for V a Gaussian distribution with zero mean and no spatial correlation, such that ¹

$$\overline{V(x)V(x')} = D\delta(x-x'). \quad (2.6)$$

In order to write the low-energy form of the Hamiltonian we follow the work of Haldane [26] and introduce two quantum fields ϕ_α and θ_α for each species $\alpha = f, b$. The field ϕ_α encodes density fluctuations through

$$\rho_\alpha(x) = \left[\rho_\alpha - \frac{1}{\pi} \nabla \phi_\alpha(x) \right] \sum_p e^{i2p[\pi\rho_\alpha x - \phi_\alpha(x)]}. \quad (2.7)$$

One can understand this formula by considering a hypothetical classical configuration where atoms of a 1D gas are at a distance ρ_α^{-1} apart from each other. A good starting point is the density wave of wave vector $q = 2\pi\rho_\alpha$, so that, $\rho_\alpha(x) = \rho_\alpha \cos[2\pi\rho_\alpha x - 2\phi_\alpha]$. Density fluctuations are then allowed by letting the phase ϕ_α of the density wave vary in space. The true density operator, $\rho_\alpha(x) = \sum_{i=1}^N \delta(x-x_i)$, is reconstructed by summing over all even harmonics of $2\pi\rho_\alpha$. In Eq. (2.7), the $\nabla\phi$ term describes long-wavelength fluctuations of the density. This exact formula is complemented by the expression of the creation operators,

$$\psi_\alpha^\dagger(x) = \sqrt{\rho_\alpha(x)} e^{-i\theta_\alpha(x)}, \quad (2.8)$$

where $\theta_\alpha(x)$ is the quantum phase operator. The fields ϕ_α and θ_α obey the following commutation relations,

$$[\phi_\alpha(x), \nabla\theta_\beta(x')] = i\pi\delta_{\alpha\beta}\delta(x-x'), \quad (2.9)$$

and quantum statistics impose that [26,57]

$$\psi_b^\dagger(x) = \sqrt{\rho_b} e^{-i\theta_b(x)} \sum_p e^{i2p[\pi\rho_b x - \phi_b(x)]}, \quad (2.10)$$

$$\psi_f^\dagger(x) = \sqrt{\rho_f} e^{-i\theta_f(x)} \sum_p e^{i(2p+1)[\pi\rho_f x - \phi_f(x)]}. \quad (2.11)$$

Haldane's theory also states that the universal low-energy Hamiltonian of a fermionic or bosonic 1D interacting system is of the form,

$$H_\alpha = \frac{v_\alpha}{2\pi} \int dx \left[K_\alpha (\nabla\theta_\alpha)^2 + \frac{1}{K_\alpha} (\nabla\phi_\alpha)^2 \right], \quad (2.12)$$

where v_α and K_α are two nonuniversal parameters depending on the exact details of the microscopic model considered. For $U_{\text{BF}} = 0$, $K_f = 1$, and $v_f = \pi\rho_f/M_f$ is the Fermi velocity, while K_b and v_b can be extracted from the solution of the Lieb-Liniger model [56]. They depend on a single dimensionless parameter $\gamma = M_b U_b / \rho_b$, characterizing the strength of bosonic interactions. K_b is a monotonously decreasing function of γ . For all values of γ , $K_b \geq 1$, and $K_b = 1$ for

hard-core bosons, that is, $\gamma \rightarrow \infty$. The velocity v_b can be identified with the sound velocity in the quasi-BEC, is an increasing function of γ , and saturates to $\pi\rho_b/M_b$.

We then add interactions between the two species perturbatively. The lowest order term is

$$H_{\text{BF}} = \frac{U_{\text{BF}}}{\pi^2} \int dx \nabla\phi_f \nabla\phi_b, \quad (2.13)$$

a term that couples density fluctuations of each species. It encodes forward scattering processes for fermions (i.e., low momentum scattering events that leave fermions on the same branch of the Fermi surface). Backscattering processes, that transform right-moving fermions into left-moving fermions and vice versa, would arise from a term such as

$$H_{\text{BF}} = g_{\text{BF}} \int dx \cos[2\phi_f(x) - 2\phi_b(x)], \quad (2.14)$$

as can be seen from Eq. (2.7), when $\rho_f = \rho_b$. For the rest of the paper, however, we will assume that $\rho_f \neq \rho_b$, and drop Eq. (2.14). In addition, since there is no underlying lattice, dangerous umklapp processes do not appear either. Therefore, to next order in perturbation theory only a current-current interaction term appears [47], and renormalizes slightly the Luttinger parameters. We thus neglect all these effects and retain only the following quadratic Hamiltonian,

$$H_0 = \sum_{\alpha=f,b} \frac{v_\alpha}{2\pi} \int dx \left[K_\alpha (\nabla\theta_\alpha)^2 + \frac{1}{K_\alpha} (\nabla\phi_\alpha)^2 \right] + \frac{U_{\text{BF}}}{\pi^2} \int dx \nabla\phi_f \nabla\phi_b. \quad (2.15)$$

We now proceed to couple the system to the external random potential. Being interested in the low-energy sector of the theory, only certain Fourier components of the random potential will couple to the BF mixture. The low-momentum Fourier components couple to the density fluctuation fields $\nabla\phi_f$ and $\nabla\phi_b$, whereas the Fourier components around $2\pi\rho_f$ and $2\pi\rho_b$ couple directly to the density waves. Therefore, following Ref. [18], we decompose V_α as

$$V_\alpha(x) \approx \gamma_\alpha(x) + \xi_\alpha(x) e^{i2\pi\rho_\alpha x} + \text{H.c.} + \dots, \quad (2.16)$$

$$\gamma_{f(b)}(x) = \frac{1}{L} \sum_{q \sim 0} e^{iqx} V_{f(b),q}, \quad (2.17)$$

$$\xi_{f(b)}(x) = \frac{1}{L} \sum_{q \sim 0} e^{iqx} V_{f(b),q-2\pi\rho_{f(b)}}, \quad (2.18)$$

with $V_{f(b),q}$ the Fourier transform of $V_{f(b)}(x)$. Notice that ξ_f and ξ_b are uncorrelated for $\rho_f \neq \rho_b$. Indeed from Eq. (2.6) we have $\overline{V_q V_{q'}} = D\delta_{qq'}$. Therefore $\overline{\xi_\alpha(x) \xi_\beta^*(x')} = D\delta_{\alpha\beta} \delta(x-x')$ as well as $\overline{\xi_\alpha(x) \xi_\beta(x')} = 0$ and $\overline{\xi_\alpha^*(x) \xi_\beta^*(x')} = 0$. On the contrary, since V_f and V_b are proportional, so are γ_f and γ_b . The resulting hydrodynamic Hamiltonian reads

$$H_{\text{ext}} = \sum_{\alpha=f,b} \int dx \left[-\frac{\gamma_\alpha(x)}{\pi} \nabla\phi_\alpha + \rho_\alpha \xi_\alpha(x) e^{-i2\phi_\alpha(x)} + \text{H.c.} \right]. \quad (2.19)$$

It appears that γ_f and γ_b act as random chemical potentials. However, they just describe forward scattering, have no effect

¹Overlining a quantity will indicate averaging over all possible realizations of the disorder.

on the pinning of the density waves, and can indeed be eliminated through a gauge transformation [18],

$$\begin{aligned}\tilde{\phi}_\alpha(x) &= \phi_\alpha(x) - \int^x dy \lambda_\alpha(y), \\ \tilde{\xi}_\alpha(x) &= \xi_\alpha(x) e^{-i2 \int^x dy \lambda_\alpha(y)},\end{aligned}\quad (2.20)$$

with the static fields $\lambda_\alpha(x)$ defined as

$$\lambda_f(x) = \frac{K_f/v_f}{1-g^2} \left[\gamma_f(x) - g \sqrt{\frac{v_f K_b}{v_b K_f}} \gamma_b(x) \right], \quad (2.21)$$

$$\lambda_b(x) = \frac{K_b/v_b}{1-g^2} \left[\gamma_b(x) - g \sqrt{\frac{v_b K_f}{v_f K_b}} \gamma_f(x) \right], \quad (2.22)$$

and the fields $\theta_f(x)$ and $\theta_b(x)$ remaining unchanged. Here we have introduced the dimensionless Bose-Fermi coupling,

$$g = \frac{U_{\text{BF}}}{\pi} \sqrt{\frac{K_f K_b}{v_f v_b}}, \quad (2.23)$$

an essential parameter in our future analysis. After this gauge transformation our Hamiltonian reads

$$\begin{aligned}H &= \sum_{\alpha=f,b} \frac{v_\alpha}{2\pi} \int dx \left[K_\alpha (\nabla \theta_\alpha)^2 + \frac{1}{K_\alpha} (\nabla \tilde{\phi}_\alpha)^2 \right] \\ &+ \frac{U_{\text{BF}}}{\pi^2} \int dx \nabla \tilde{\phi}_f \nabla \tilde{\phi}_b \\ &+ \sum_{\alpha=f,b} \int dx [\rho_\alpha \tilde{\xi}_\alpha(x) e^{-i2\tilde{\phi}_\alpha(x)} + \text{H.c.}].\end{aligned}\quad (2.24)$$

We remark that the gauge transformation above does not affect the fermion pair correlation function nor current-current correlation function, nor does it affect the bosonic propagator. However, it does effect the density operator, and results in an exponential decay of its correlation function (see Sec. IV A). Forward scattering on disorder thus does not compete with superfluid or normal currents and does not lead to localization, though it generates an exponential decay in certain correlation functions. Pinning of the density waves occurs because of back-scattering with transferred momenta $2\pi\rho_f$ or $2\pi\rho_b$, as described by the fields $\tilde{\xi}_f(x)$ and $\tilde{\xi}_b(x)$ in (2.24). Notice that since $\gamma_{f,b}$ and $\xi_{f,b}$ are uncorrelated, $\tilde{\xi}_{f,b}$ are also independent Gaussian random variables with the same correlation functions as $\xi_{f,b}$. Although the gauge transformation has consequences when computing quantities depending directly on the density, for simplicity, we shall omit the tildes in our subsequent analysis.

B. Correlations in the homogeneous system

In this paragraph, we consider the quadratic Hamiltonian H_0 of Eq. (2.15) in the absence of a random potential. It is natural to introduce the two normal modes ϕ_\pm that diagonalize H_0 [37,38,47],

$$\phi_f = f_+ \phi_+ + f_- \phi_-, \quad (2.25)$$

$$\phi_b = b_+ \phi_+ + b_- \phi_-. \quad (2.26)$$

The coefficients f_\pm and b_\pm can be found in Appendix A. Similarly, the corresponding transformations for the θ fields read

$$\theta_f = \bar{f}_+ \theta_+ + \bar{f}_- \theta_-, \quad (2.27)$$

$$\theta_b = \bar{b}_+ \theta_+ + \bar{b}_- \theta_-. \quad (2.28)$$

The sound velocities of these normal modes are

$$v_\pm^2 = \frac{1}{2}(v_f^2 + v_b^2) \pm \frac{1}{2}\sqrt{(v_f^2 - v_b^2)^2 + 4g^2 v_f^2 v_b^2}, \quad (2.29)$$

with g defined in Eq. (2.23). It appears that when $|g| > 1$ the theory is unstable as v_- becomes imaginary. As pointed out in Ref. [37] this dynamical instability is a signal of phase separation ($U_{\text{BF}} > 0$) or collapse ($U_{\text{BF}} < 0$) of the BF mixture. Using the above decomposition one can compute correlation functions for several instabilities and deduce a phase diagram. As usual in one dimension, the nature of a given phase is determined by the slowest decaying correlation function, since in a Luttinger liquid only quasi-long-range ordering can occur. As pointed out in Ref. [47], four instabilities compete in the two-component Luttinger liquid, a charge density wave of fermions (CDW_f), p -wave pairing of fermions (PW), a charge density wave of bosons (CDW_b), and superfluidity of bosons (SF). The corresponding order parameters are $O_{\text{CDW}_f}(x) = \psi_{f,R}^\dagger(x) \psi_{f,L}(x) \approx \rho_f e^{2i\phi_f(x)}$, $O_{\text{PW}}(x) = \psi_{f,R}(x) \psi_{f,L}(x) \approx \rho_f e^{2i\theta_f(x)}$, where we have used the operators for right- and left-moving fermions [57], and $O_{\text{CDW}_b}(x) = \rho_b e^{i2\phi_b(x)}$, $O_{\text{SF}}(x) = \psi_b(x) \approx \sqrt{\rho_b} e^{i\theta_b(x)}$. For a simple 1D Fermi gas we would have

$$\langle O_{\text{CDW}_f}(x) O_{\text{CDW}_f}^\dagger(0) \rangle_{g=0} \sim \left(\frac{\alpha}{|x|} \right)^{2K_f}, \quad (2.30)$$

$$\langle O_{\text{PW}}(x) O_{\text{PW}}^\dagger(0) \rangle_{g=0} \sim \left(\frac{\alpha}{|x|} \right)^{2/K_f}, \quad (2.31)$$

with α a short distance cutoff, of the order of the interparticle distance. It turns out that our case of $K_f = 1$ is a transition point between a phase dominated by charge density wave fluctuations ($K_f < 1$, repulsive interactions), with wave vector $2k_f$, and a phase dominated by pairing fluctuations ($K_f > 1$, attractive interactions) [57]. Turning now to the Bose-Fermi mixture, we find

$$\langle O_{\text{CDW}_f}(x) O_{\text{CDW}_f}^\dagger(0) \rangle_{g \neq 0} \sim \left(\frac{\alpha}{|x|} \right)^{2f_+^2 + 2f_-^2}, \quad (2.32)$$

$$\langle O_{\text{PW}}(x) O_{\text{PW}}^\dagger(0) \rangle_{g \neq 0} \sim \left(\frac{\alpha}{|x|} \right)^{2\bar{f}_+^2 + 2\bar{f}_-^2}, \quad (2.33)$$

with

$$f_+^2 + f_-^2 = \frac{K_f}{\sqrt{1-g^2}} \frac{1+t\sqrt{1-g^2}}{\sqrt{1+2t\sqrt{1-g^2}+t^2}}, \quad (2.34)$$

$$\bar{f}_+^2 + \bar{f}_-^2 = \frac{1}{K_f} \frac{t+\sqrt{1-g^2}}{\sqrt{1+2t\sqrt{1-g^2}+t^2}}, \quad (2.35)$$

where $t = v_f/v_b$. For any ratio of velocities t and $|g| < 1$, $f_+^2 + f_-^2 > K_f$, and $\bar{f}_+^2 + \bar{f}_-^2 < 1/K_f$. Therefore, starting from noninteracting fermions and $K_f = 1$, because of the Bose-Fermi interactions the pairing fluctuations will always

dominate over the charge density wave fluctuations. The effect of the Bose-Fermi interaction is thus to create an effective attractive Fermi-Fermi interaction. The situation is very similar to the one of interacting electrons in a metal, coupled to phonons, where an effective attractive interaction arises from the integration of the phonon degrees of freedom.

A similar analysis can be carried out for the bosons, where charge density wave fluctuations, with wave vector $2\pi\rho_b$, compete with superfluid fluctuations. Indeed,

$$\langle O_{\text{CDW}_b}(x)O_{\text{CDW}_b}^\dagger(0) \rangle_{g \neq 0} \sim \left(\frac{\alpha}{|x|} \right)^{2b_+^2 + 2b_-^2}, \quad (2.36)$$

$$\langle O_{\text{SF}}(x)O_{\text{SF}}^\dagger(0) \rangle_{g \neq 0} \sim \left(\frac{\alpha}{|x|} \right)^{\frac{1}{2}\bar{b}_+^2 + \frac{1}{2}\bar{b}_-^2}, \quad (2.37)$$

with

$$b_+^2 + b_-^2 = \frac{K_b}{\sqrt{1-g^2}} \frac{t + \sqrt{1-g^2}}{\sqrt{1+2t\sqrt{1-g^2}+t^2}}, \quad (2.38)$$

$$\bar{b}_+^2 + \bar{b}_-^2 = \frac{1}{K_b} \frac{1+t\sqrt{1-g^2}}{\sqrt{1+2t\sqrt{1-g^2}+t^2}}. \quad (2.39)$$

Similar to the fermionic sector, $b_+^2 + b_-^2 > K_b$ and $\bar{b}_+^2 + \bar{b}_-^2 < 1/K_b$. Superfluidity is thus enhanced by the Bose-Fermi interactions, which create an effective attractive bosonic interaction as well, that reduces the original repulsive Bose-Bose interactions and therefore favors superfluidity.

In the system under consideration there are three independent parameters: the ratio of velocities $t = v_f/v_b$, the Luttinger parameter of bosons K_b (K_f is fixed and equal to 1), and Bose-Fermi interactions, through U_{BF} . As an example we plot the superfluid and density wave exponents in Figs. 1 and 2, respectively, taking $K_f = K_b = 1$, corresponding to hard core bosons and noninteracting fermions. In addition, we have taken equal masses ($M_f = M_b = M$) for both species. In that case (and since we are working here in the continuum), $v_f = \pi\rho_f/M$ and $v_b = \pi\rho_b/M$ and the ratio of velocities can be expressed as a function of the fraction of fermions

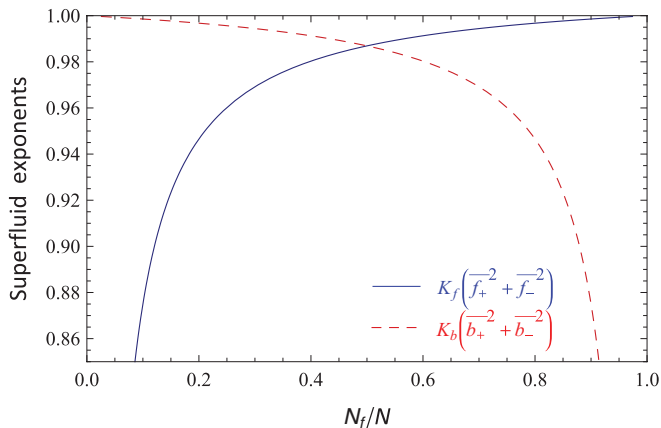


FIG. 1. (Color online) Superfluid exponents for $K_b = 1$ and $U_{\text{BF}}/v_0 = 1$, with $v_0 = (v_f + v_b)/2$, as a function of the fraction of fermions. We take equal masses for both species, so that U_{BF}/v_0 is kept a constant for all fillings. Solid blue line, fermions. Red dashed line, bosons.

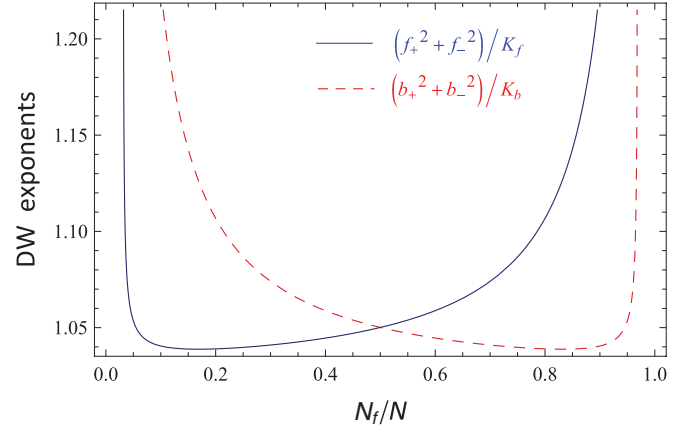


FIG. 2. (Color online) Density wave exponents for $K_b = 1$ and $U_{\text{BF}}/v_0 = 1$, with $v_0 = (v_f + v_b)/2$, as a function of the fraction of fermions. We take equal masses for both species, so that U_{BF}/v_0 is kept a constant for all fillings. Solid blue line, fermions. Red dashed line, bosons.

only N_f/N (N the total number of particles being fixed). For Bose-Fermi interactions, we use the following dimensionless parameter U_{BF}/v_0 with $v_0 = (v_f + v_b)/2$ the mean velocity, which is a constant independent of N_f/N . We wish to illustrate here that the ratio of velocity is a crucial parameter that is ultimately related to clear parameters of an experimental system, such as the number of particles. In Figs. 1 and 2 one notices that density wave correlations are mostly suppressed for the slowest species of the two, while on the contrary, its superfluid correlations are enhanced. One has to keep this feature in mind which will be crucial for the analysis of localization.

III. LOCALIZATION IN 1D BOSE-FERMI MIXTURES

A. A preliminary variational argument

Consider the case of a single species of interacting particles with backscattering on a random external potential. We recast its low-energy Hamiltonian [see (2.24)] into

$$H = \frac{v}{2\pi} \int dx \left[K(\nabla\theta)^2 + \frac{1}{K}(\nabla\phi)^2 \right] + \rho \int dx [\xi(x)e^{-i2\phi(x)} + \text{H.c.}], \quad (3.1)$$

where again $\xi(x)$ is the $2\pi\rho$ Fourier component of the random potential. We briefly review the variational argument proposed by Fukuyama and Suzumura in Ref. [61]. It starts by looking for a classical configuration $\phi_0(x)$ satisfying

$$\left. \frac{\delta H}{\delta \phi} \right|_{\phi=\phi_0} = 0, \quad (3.2)$$

a differential equation with random coefficients. A variational solution is found by assuming that the charge density wave breaks into domains of size L_0 on which $\phi_0(x)$ is a constant. By doing so it takes advantage from the random potential (ξ and ξ^*) as much as possible. A typical energy of order $-(L/L_0)\sqrt{DL_0}$ is gained in this way. However, the optimal value ϕ_0 varies randomly from domain to domain with

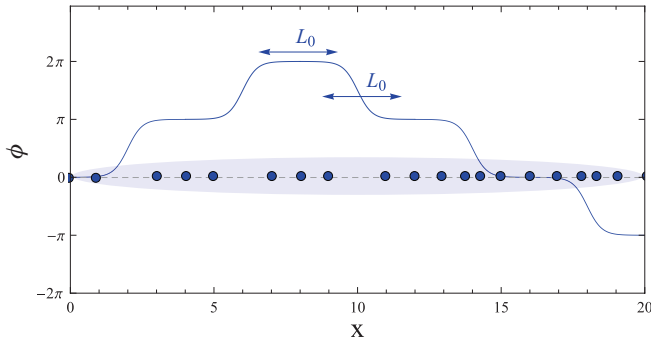


FIG. 3. (Color online) Schematic representation of the phase $\phi(x)$ from the variational solution for the pinning of a density wave by a random potential. x is in unit of the inverse density. The system breaks into domains of order L_0 separated by domain walls of the same average size. A schematic description of the classical density also appears. On a domain with constant ϕ a regular DW appears while on domain walls, an extra particle ($\nabla\phi < 0$) or a hole ($\nabla\phi > 0$) is pinned by disorder.

differences of order π . This costs elastic energy, through the interaction term $(\nabla\phi)^2$, of order L/L_0 if domain walls are of the same typical size L_0 . According to this Imry-Ma-like analysis [62], there is always a finite value L_0 for which the energy is minimum and negative (as compared to the value of zero one would obtain for ϕ_0 constant over the whole system). As a next step, quantum fluctuations are added self-consistently. These tend to reduce the amount of potential energy gained from the random potential. Expanding $\phi(x)$ around the classical solution $\phi_0(x)$, $\phi(x) = \phi_0(x) + \psi(x)$ with ψ a quantum field, the effective Hamiltonian per unit length and up to a constant is

$$H/L = E_{\text{el}} + \frac{v}{2\pi} \int dx \left[K(\nabla\theta)^2 + \frac{1}{K} : (\nabla\psi)^2 : \right] - \left(\frac{D}{L_0} \right)^{1/2} \left(\frac{m}{\Lambda} \right)^K \int dx : \cos[2\psi(x)] :, \quad (3.3)$$

where we have normal ordered the effective sine Gordon Hamiltonian [63] and E_{el} is the elastic energy (of order $1/L_0$) coming from the classical configuration. Λ is an ultraviolet (UV) cutoff and the mass m can be obtained using a self-consistent harmonic approximation [61], $m^2 = \mathcal{B}\sqrt{D/L_0}(m/\Lambda)^K$, with \mathcal{B} some unimportant prefactor. Minimizing the energy with respect to L_0 one then finds

$$L_0 \propto \left(\frac{1}{D} \right)^{\frac{1}{3-2K}}, \quad \text{for } K < 3/2. \quad (3.4)$$

In the context of 1D interacting particles this length can be understood as the localization length of the system. The CDW is pinned by the random potential and correlations in the phase of the CDW are lost above the localization length. It appears from (3.4) that L_0 diverges as K approaches $3/2$. Therefore a gas of 1D fermions should undergo a transition from a localized to superfluid phase as attractive interactions are increased. Similarly for bosons, a transition to superfluidity would occur as interactions are decreased from the hard-core limit. A schematic description of the pinning as understood from the variational solution is given in Fig. 3.

Turning now to the case of an interacting BF mixture, similar arguments can be put forward. Consider the classical solution that minimizes the energy,

$$E = \frac{v_f}{2\pi K_f} \int dx (\nabla\phi_f)^2 + \frac{v_b}{2\pi K_b} \int dx (\nabla\phi_b)^2 + \frac{U_{\text{BF}}}{\pi^2} \int dx \nabla\phi_f \nabla\phi_b + \sum_{\alpha=f,b} \rho_\alpha \int dx [\xi_\alpha(x) e^{-i2\phi_\alpha(x)} + \text{H.c.}]. \quad (3.5)$$

In the simpler case where the random potential couples only to bosons, the situation is very similar to the one exposed in the single species problem. The boson gas breaks up into domains of size L_b , on which the classical phase $\phi_{b,0}$ adjusts to the random phase. The fermionic density wave then deforms its phase so as to minimize the energy of the system. There are two elastic contributions for fermions: $(\nabla\phi_{f,0})^2$ that tries to keep the fermionic phase constant and $U_{\text{BF}}/\pi^2 \nabla\phi_{f,0} \nabla\phi_{b,0}$ that tries to keep both density waves in phase ($U_{\text{BF}} < 0$) or out of phase ($U_{\text{BF}} > 0$). The optimal configuration is readily exhibited by recasting the Hamiltonian in the following form:

$$E = \frac{v_f}{2\pi K_f} \int dx (\nabla\tilde{\phi}_f)^2 + \frac{v_b}{2\pi K_b} \left(1 - \frac{U_{\text{BF}} K_b K_f}{\pi^2 v_f v_b} \right) \int dx (\nabla\phi_b)^2 + \rho_b \int dx [\xi_b(x) e^{-i2\phi_b(x)} + \text{H.c.}], \quad (3.6)$$

where we have made the following change of variables, $\tilde{\phi}_f = \phi_f + \frac{U_{\text{BF}} K_f}{\pi v_f} \phi_b$. The elastic energy cost of deforming the bosonic phase is reduced by a factor $1 - g^2$ if $\tilde{\phi}_f$ is kept constant. Then, the bosonic gas breaks into domains of size L_b ,

$$L_b \propto \left(\frac{1}{D_b} \right)^{\frac{1}{3-2\tilde{K}_b}}, \quad \text{for } \tilde{K}_b < 3/2, \quad (3.7)$$

with $\tilde{K}_b = K_b/\sqrt{1-g^2}$, while the fermionic density adjusts accordingly in a way given by the classical solution:

$$\phi_{f,0}(x) = -\frac{U_{\text{BF}} K_f}{\pi v_f} \phi_{b,0}(x) + \text{const.} \quad (3.8)$$

We emphasize two important aspects at this point. Note that the instability toward phase separation or collapse when $g^2 = 1$ is apparent already at the classical level. The coefficient before $(\nabla\phi_b)^2$ becomes negative as g^2 exceeds 1, favoring maximum distortion of the bosonic density wave. Note also that the present transformation for the fields (3.6) does not diagonalize the full quantum Hamiltonian, and would not allow for a correct treatment of quantum fluctuations.

Finally, we consider the situation where the disorder couples to both components of the gas. Although a full self-consistent treatment is needed, here we only give a few qualitative arguments; we postpone the self-consistent calculation to Sec. III C where we use replica symmetry breaking in order to describe the fully localized phase. We are now in a situation where the disorder tries to pin both components of the gas independently (as ξ_f and ξ_b are

uncorrelated) while elastic deformations are coupled. We still look for a solution where both components break into domains of size L_b and L_f . A way to disentangle the problem is to consider the case where one of the localization lengths is (much) larger than the other, say $L_b > L_f$. Building on Eq. (3.8), it seems reasonable to assume that the fermionic phase is of the form,

$$\phi_{f,0}(x) = -\frac{U_{\text{BF}} K_f}{\pi v_f} \phi_{b,0}(x) + \lambda_f. \quad (3.9)$$

Here, λ_f which is related to the random phase of the disordered potential ξ_f has replaced the constant in Eq. (3.8). On domains where ϕ_b is a constant, ϕ_f makes random jumps of order π to accommodate the random potential, very much as in the single species case. On the contrary, when ϕ_b deforms between two domains, it has the effect of a chemical potential—much like in a Mott- δ transition—and imposes a finite slope on ϕ_f . In that case the variations of ϕ_f follow a nested pattern, in the sense that the coupling to bosons imposes variations on a length scale of the order of L_b , while each domain of size L_b breaks down into smaller domains of size L_f in order to accommodate the random phase of the disorder. Of course at this level one should take into account quantum fluctuations. It is the object of the next two sections. First we perform a renormalization group calculation in order to identify the regions of parameter space where disorder is relevant and likely to pin one or both components of the gas. Then we use the concept of replica symmetry breaking to confirm the findings of the RG calculation and the intuitions we got from the classical approach.

B. Renormalization group calculation and a tentative phase diagram

The RG approach is especially powerful to treat both the effects of interactions and disorder in 1D systems. Following the approach introduced by Giamarchi and Schulz in Ref. [18], we treat disorder as a perturbation of the Luttinger liquid fixed point. Our starting point is the Hamiltonian of Eq. (2.24). The low-energy fixed point is the two-component Luttinger liquid described in Sec. II B and, once again, the random potential tries to pin each component independently. The RG transformation is constructed by integrating out high-energy degrees of freedom—here, short distance density fluctuations—at the level of the partition function, through a rescaling of the UV cutoff. A detailed calculation is presented in Appendix B. A complication arises in a system with quenched disorder. There, the thermodynamic quantity of interest is the average free energy F defined as

$$-\beta F = \overline{\ln Z}, \quad (3.10)$$

where Z is the partition function for a given realization of the random potential, and the overbar denotes averaging over all possible realizations of the disorder. The average free energy is very difficult to compute and one way of action is to use the so-called replica trick [64]. It rests upon the following observation,

$$\lim_{n \rightarrow 0} \frac{1}{n} \ln \overline{Z^n} = \overline{\ln Z}. \quad (3.11)$$

The trick consists of introducing n identical copies of the system, averaging over the disorder realizations, and in the end taking the limit $n \rightarrow 0$. Practically we will work with the quantity $\overline{Z^n}$ to perform the RG calculation. Using the path integral formulation, the partition function Z for a given realization of the disorder is

$$Z = \int D\phi_f D\phi_b e^{-S[\phi_f, \phi_b]}, \quad (3.12)$$

with S the action derived from the Hamiltonian (2.24), that is, $S = S_0 + S_{\text{dis}}$, with

$$S_0 = \sum_{\alpha=f,b} \frac{1}{2\pi K_\alpha} \int dx d\tau \left[\frac{1}{v_\alpha} (\partial_\tau \phi_\alpha)^2 + v_\alpha (\partial_x \phi_\alpha)^2 \right] + \frac{U_{\text{BF}}}{\pi^2} \int dx d\tau \partial_x \phi_f \partial_x \phi_b, \quad (3.13)$$

$$S_{\text{dis}} = \sum_{\alpha=f,b} \rho_\alpha \int dx d\tau [\xi_\alpha(x) e^{-2\phi_\alpha(x,\tau)} + \text{H.c.}]. \quad (3.14)$$

Assuming that ξ_f and ξ_b have Gaussian distributions, we compute the replicated action defined through

$$\overline{Z^n} = \int \prod_{a=1}^n D\phi_f^a D\phi_b^a e^{-S_{\text{rep}}}, \quad (3.15)$$

and find $S_{\text{rep}} = S_0^{\text{rep}} + S_{\text{dis}}^{\text{rep}}$ with

$$S_0^{\text{rep}} = \sum_{a=1}^n \sum_{\alpha=f,b} \frac{1}{2\pi K_\alpha} \int dx d\tau \left[\frac{1}{v_\alpha} (\partial_\tau \phi_\alpha^a)^2 + v_\alpha (\partial_x \phi_\alpha^a)^2 \right] + \frac{U_{\text{BF}}}{\pi^2} \int dx d\tau \partial_x \phi_f^a \partial_x \phi_b^a, \quad (3.16)$$

$$S_{\text{dis}}^{\text{rep}} = -D_f \rho_f^2 \sum_{a,b} \int dx d\tau d\tau' \cos [2\phi_f^a(x,\tau) - 2\phi_f^b(x,\tau')] - D_b \rho_b^2 \sum_{a,b} \int dx d\tau d\tau' \cos [2\phi_b^a(x,\tau) - 2\phi_b^b(x,\tau')]. \quad (3.17)$$

Using the following parametrization for the UV cutoff, $\Lambda(l) = \Lambda_0 e^{-l}$, Λ_0 being the bare cutoff, we find the following RG flow equations (see Appendix B):

$$\frac{d\tilde{D}_f}{dl} = (3 - X_f) \tilde{D}_f(l), \quad (3.18)$$

$$\frac{d\tilde{D}_b}{dl} = (3 - X_b) \tilde{D}_b(l), \quad (3.19)$$

where we have defined the dimensionless couplings $\tilde{D}_f = \frac{D_f \rho_f^2}{v_f^2 \Lambda^3}$ and $\tilde{D}_b = \frac{D_b \rho_b^2}{v_b^2 \Lambda^3}$. K_f, K_b, v_f , and v_b are also renormalized. Their flow equations are written in Appendix B. The anomalous dimensions, X_f and X_b , of the disorder operators are obtained from the diagonalization of S_0 . They are

$X_f = 2f_+^2 + 2f_-^2$ and $X_b = 2b_+^2 + 2b_-^2$. We recall their analytical expressions as a function of $t = v_f/v_b$ and g :

$$X_f = \frac{2K_f}{\sqrt{1-g^2}} \frac{1+t\sqrt{1-g^2}}{\sqrt{1+2t\sqrt{1-g^2}+t^2}}, \quad (3.20)$$

$$X_b = \frac{2K_b}{\sqrt{1-g^2}} \frac{t+\sqrt{1-g^2}}{\sqrt{1+2t\sqrt{1-g^2}+t^2}}. \quad (3.21)$$

For uncoupled species ($g = 0$), $X_f = 2K_f$ and $X_b = 2K_b$. Thus spinless fermions (bosons) are localized when $K_f < 3/2$ ($K_b < 3/2$) [18]. As Bose-Fermi interactions are turned on, new phases appear. As explained in Sec. II B, Bose-Fermi interactions tend to enhance superfluid correlations and impair the formation of density waves. Formally, $X_f > 2K_f$ and $X_b > 2K_b$ and there exist regions of parameters for which disorder is an irrelevant perturbation in the RG sense although single species would be localized. In the variational language of Sec. III A, it means that quantum fluctuations are enhanced by the Bose-Fermi interactions and tend to reduce the localization length.

In Figs. 4 and 5 we show two examples of the critical lines for two ratios of velocities, $v_f/v_b = 3$ and $v_f/v_b = 1/3$. Although the mechanism by which superfluidity is enhanced seems clear enough one should be careful in drawing conclusions about the actual phase diagram from the positions of the critical lines given by Eqs. (3.18) and (3.19). Indeed, when one or both perturbations are relevant, disorder parameters flow to a strong coupling phase, out of reach of the perturbative RG we have used so far. This is of special importance in some regions of the phase diagram. For instance in Fig. 4, there is a large

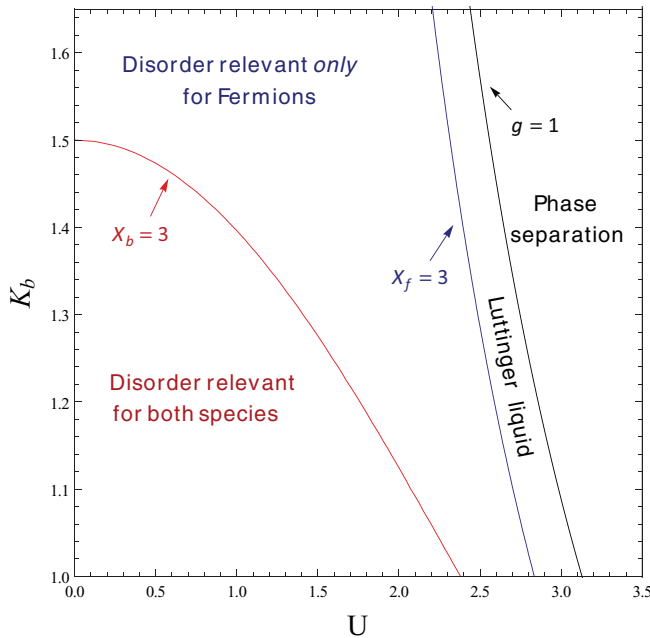


FIG. 4. (Color online) Critical lines as obtained from the RG flow (3.18) and (3.19), for a ratio of velocities $t = 3$, and $K_f = 1$. Here we have chosen to parametrize interactions with $U = U_{\text{BF}}/\sqrt{v_f v_b}$. Note that U is related to the dimensionless parameter g of Eq. (2.23) through $g = U\sqrt{K_f K_b}/\pi$.

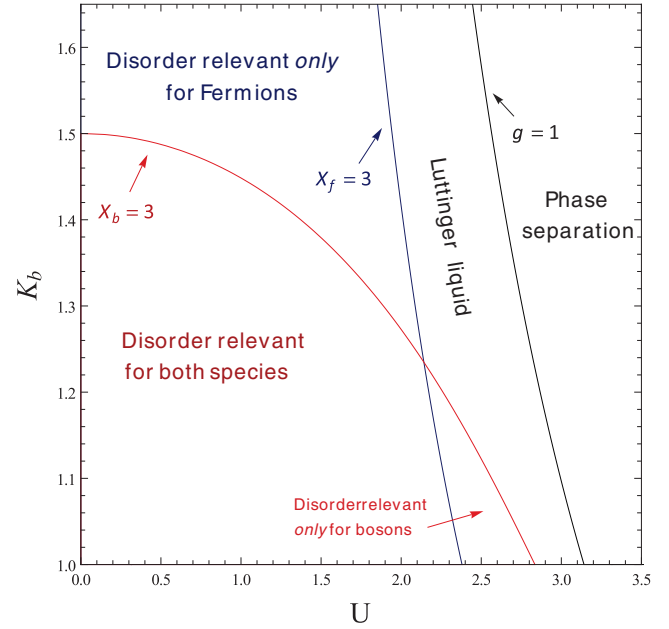


FIG. 5. (Color online) Critical lines as obtained from the RG flow (3.18) and (3.19), for a ratio of velocities $t = 1/3$, and $K_f = 1$. We have defined $U = U_{\text{BF}}/\sqrt{v_f v_b}$.

portion of the diagram for which $X_b > 3$ and $X_f < 3$. Here D_f appears to be relevant while D_b is irrelevant. If $K_b > 3/2$ the nature of this phase is quite clear: Fermions are localized (they are in the so-called Anderson glass phase) while bosons remain superfluid. Indeed, if $U_{\text{BF}} = 0$, spinless fermions are localized, as they should be, and bosons are in a superfluid phase ($K_b > 3/2$). The effects of nonzero BF interactions are twofold. The phonons of the bosonic gas mediate an effective attractive interactions that eventually leads to a transition to a phase where fermions are superfluid (and pair correlation are dominant). Similarly the phonons of the fermionic gas tend to reduce the repulsion between bosons and enhance superfluidity. Note that although fermions are localized this mechanism is possible since their localization length L_f is quite large in the limit of weak disorder and phonons do exist below L_f . Now if $K_b < 3/2$ the interpretation of the RG flow is more delicate. Phonons in the fermionic gas do renormalize the bosonic interactions in such a way that $X_b > 3$ and D_b is irrelevant. However, as soon as the UV cutoff is rescaled down to the inverse fermionic localization length, fluctuations in the fermionic density are pinned by disorder and “gapped,” and thus no longer affect the bosons. Below this cutoff, bosons interact with their bare interactions and, as $K_b < 3/2$, disorder is relevant again and bosons are localized. Therefore above a certain value $l = l_f$ for which $\tilde{D}_f(l_f) = 1$ and $L_f^{-1} = \Lambda(l_f)$, the flow of \tilde{D}_b should be modified as follows:

$$\frac{d \log \tilde{D}_b}{dl} = \begin{cases} 3 - X_b & \text{if } \Lambda \gg L_f^{-1} \\ 3 - 2K_b & \text{if } \Lambda \ll L_f^{-1}. \end{cases} \quad (3.22)$$

This should hold for any value of K_b . The important point here is that when $X_b > 3$ and $K_b < 3/2$ bosons are still localized once the fermions become localized. However, the structure of

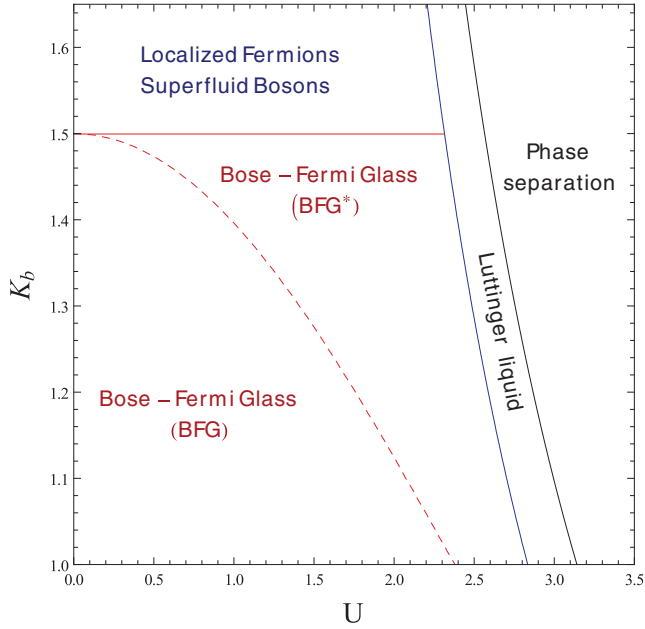


FIG. 6. (Color online) Phase diagram of the Bose-Fermi mixture in a random potential as a function of K_b and $U = U_{\text{BF}}/\sqrt{v_b v_f}$ for $t = 3$. BFG stands for Bose-Fermi glass. BFG* is the same phase, however, we identify a crossover regime for which the localization length of bosons is much larger than the one of fermions.

the flow indicates that the bosonic localization length (defined as $L_b = \Lambda(l_b)^{-1}$ with $\tilde{D}_b(l_b) = 1$) will be extremely large.

Therefore, based on this RG approach we propose the following tentative phase diagram, summarized in Fig. 6 for $v_f/v_b > 1$. We identify three phases: the usual two-component Luttinger liquid (LL) as disorder is irrelevant for both species, a phase where fermions are localized while bosons remain superfluid, and a phase where both species are localized but still coupled. We call the latter a Bose-Fermi glass, by analogy with the Bose glass phase. In this phase, despite localization, interactions have very important effects. Notably, the localization length of bosons varies greatly with interactions. We highlight a crossover regime where the boson localization length becomes much larger than the fermion localization length as indicated by (3.22). To confirm our findings we look for a variational solution in replica space. This is the subject of the next section.

C. Variational calculation in replica space

1. Self-consistent equations

In the study of one-dimensional systems, a variational calculation is often a complementary tool with respect to, for example, a renormalization group calculation. We find that, in our case, even if the RG can provide some information on the structure of the phase diagram, it fails to describe properly *strong disorder* phases. An example was given in the previous subsection, in which once the fermionic disorder has flown to strong coupling—beyond the reach of perturbation theory—the behavior of bosons became unclear, regardless of what we should conclude from the dimension of the disorder operator.

The variational method aims at finding the best Gaussian approximation to the complicated action S_{rep} . It builds on the knowledge that there exists a phase where it is energetically favorable to lock the field ϕ to a certain value, and considers only quadratic fluctuations around this minimum value. Within the replica formalism we actually look for a distribution of these optimal values, very much like the solution in Fig. 3. Complications arise, however, since replicas are coupled and one needs to take the limit $n \rightarrow 0$ in the end. We have seen that the RG to first order is replica symmetric. However, to describe the localized phases properly, it is necessary to study solutions which break replica symmetry in the limit $n \rightarrow 0$.

The concepts we will use in this section have been introduced by Parisi and Mézard in Ref. [65] and further developed by Le Doussal and Giamarchi in Ref. [66] to study the problem of interacting electrons in a disordered potential. Here we generalize the method to the case of two coupled species. Let us fix a few notations before turning to the main points of the calculation, details of which can be found in Appendix C. We rewrite the action S_0 in Fourier space as

$$S^0 = \frac{1}{2} \frac{1}{\beta L} \sum_{q, i\omega_n} \phi_\alpha^a(q, i\omega_n) (G_0^{-1})_{\alpha\beta}^{ab}(q, i\omega_n) \phi_\beta^b(-q, -i\omega_n), \quad (3.23)$$

where $\alpha, \beta = f, b$ while Latin indices a, b run from 1 to n , the number of replicas. There are two implicit summations over α, β and a, b . $(G_0^{-1})_{\alpha\beta}^{ab}$ is a $2n \times 2n$ matrix whose structure is

$$G_0^{-1} = \begin{pmatrix} \frac{v_f}{\pi K_f} \left[\frac{\omega_n^2}{v_f^2} + q^2 \right] 1_n & \frac{U_{\text{BF}}}{\pi^2} q^2 1_n \\ \frac{U_{\text{BF}}}{\pi^2} q^2 1_n & \frac{v_b}{\pi K_b} \left[\frac{\omega_n^2}{v_b^2} + q^2 \right] 1_n \end{pmatrix}, \quad (3.24)$$

with 1_n the $n \times n$ unit matrix. As stated earlier, we want to replace S_{rep} by its best Gaussian approximation, S_G , with

$$(G^{-1})_{\alpha\beta}^{ab} = (G_0^{-1})_{\alpha\beta}^{ab} - \sigma_{\alpha\beta}^{ab}, \quad (3.25)$$

and $\sigma_{\alpha\beta}^{ab}$ the self-energy. The best G is obtained by minimizing the variational free energy, $F_{\text{var}} = F_G + \langle S - S_G \rangle_G / \beta$ with respect to $G_{\alpha\beta}^{ab}$. We find the following expression for F_{var} :

$$\begin{aligned} F_{\text{var}} = & -\frac{1}{2\beta} \sum_{q, i\omega_n} \text{Tr} \log[G(q, i\omega_n)] \\ & + \frac{1}{2} \sum_{\alpha, \beta} \sum_{q, i\omega_n} (G_0^{-1})_{\alpha\beta} (q, i\omega_n) \text{Tr}[G_{\alpha\beta}(q, i\omega_n)] \\ & + \frac{1}{2} \sum_{a, b} L \int d\tau [V_F(F^{ab}(\tau)) + V_B(B^{ab}(\tau))], \end{aligned} \quad (3.26)$$

with

$$F^{ab}(\tau) = \langle [\phi_f^a(x, \tau) - \phi_f^b(x, 0)]^2 \rangle_G, \quad (3.27)$$

$$B^{ab}(\tau) = \langle [\phi_b^a(x, \tau) - \phi_b^b(x, 0)]^2 \rangle_G, \quad (3.28)$$

and $V_F(x) = -2\rho_f^2 D_f e^{-2x}$ and $V_B(x) = -2\rho_b^2 D_b e^{-2x}$. In the case of static disorder, off-diagonal quantities (say, F^{ab} or B^{ab} with $a \neq b$) do not depend on time [66]. This is because off-diagonal elements describe correlations between

replicas locked to different minima, but experiencing the same disorder. The experienced random potential being static, these correlations are also time independent. Bearing this in mind we then derive the following saddle-point equations:

$$\begin{aligned} \sigma_{ff}^{aa}(q, \omega_n) &= 2 \int_0^\beta d\tau (1 - \cos[\omega_n \tau]) V'_F(F^{aa}(\tau)) \\ &\quad + 2 \int_0^\beta d\tau \sum_{b \neq a} V'_F[F^{ab}], \end{aligned} \quad (3.29)$$

$$\begin{aligned} \sigma_{bb}^{aa}(q, \omega_n) &= 2 \int_0^\beta d\tau (1 - \cos[\omega_n \tau]) V'_B(B^{aa}(\tau)) \\ &\quad + 2 \int_0^\beta d\tau \sum_{b \neq a} V'_B[B^{ab}], \end{aligned} \quad (3.30)$$

$$\sigma_{ff}^{ab}(q, \omega_n) = -2\beta \delta_{n,0} V'_F(F^{ab}) \quad (a \neq b), \quad (3.31)$$

$$\sigma_{bb}^{ab}(q, \omega_n) = -2\beta \delta_{n,0} V'_B(B^{ab}) \quad (a \neq b), \quad (3.32)$$

$$\sigma_{fb}^{ab}(q, \omega_n) = \sigma_{BF}^{ab}(q, \omega_n) = 0 \quad (\forall a, b). \quad (3.33)$$

The next step is to take the limit $n \rightarrow 0$. We follow Parisi's parametrization of 0×0 matrices [65]. If A is a matrix in replica space, taking n to 0, it can be parametrized by a couple $(\tilde{a}, a(u))$, with \tilde{a} corresponding to the (equal) replica-diagonal elements and $a(u)$ a function of $u \in [0, 1]$, parametrizing the off-diagonal elements. Then the self-energy matrix is expressed as

$$\sigma(q, \omega_n = 0) = \begin{pmatrix} [\tilde{\sigma}_f, \sigma_f(u)] & 0 \\ 0 & [\tilde{\sigma}_b, \sigma_b(u)] \end{pmatrix}. \quad (3.34)$$

Then we proceed to invert G^{-1} in order to solve the saddle-point equations. To do so we are led to make assumptions on the *off-diagonal* functions $\sigma_f(u)$ and $\sigma_b(u)$. Either we look for replica-symmetric (RS) solutions, with constant $\sigma_f(u)$ and/or $\sigma_b(u)$, or replica symmetry breaking (RSB) solutions, with nonconstant off-diagonal functions. First we shall focus on the phase with localized fermions and superfluid bosons then on the phase in which both species are pinned. In both cases we find a consistent solution by first making an intelligent guess for the structure of the replica symmetry-breaking solution, and then verifying its stability.

2. Phase with localized fermions and superfluid bosons

As was shown in Ref. [66], the localized phase of fermions in a disordered potential is well described by a RSB solution. More precisely, a level 1 symmetry breaking is required to describe the localized phase. It means that $\sigma_f(u)$ is a step function, $\sigma_f(u < u_f) = 0$ and $\sigma_f(u > u_f) = 1$, with u_f a breaking point that needs to be fixed. To describe the phase with localized fermions and free bosons that is predicted by the

RG, we look for a solution with level 1 RSB in the fermionic sector and replica symmetry in the bosonic sector. The details of the calculation are presented in Appendix C.

We introduce the inverse connected Green function [66],

$$(G^{-1})_{\alpha\beta}^c \equiv \lim_{n \rightarrow 0} \sum_b (G^{-1})_{\alpha\beta}^{ab}, \quad (3.35)$$

which, using Parisi's notation becomes

$$(G^{-1})_{\alpha\beta}^c = \tilde{G}_{\alpha\beta}^{-1} - \int_0^1 du G_{\alpha\beta}^{-1}(u). \quad (3.36)$$

For this choice of replica symmetry breaking it can be cast into

$$\begin{aligned} (G^{-1})_{ff}^c &= (G_0^{-1})_{ff}(q, i\omega_n) + I_F(\omega_n) + \Sigma_F(1 - \delta_{n,0}), \\ (G^{-1})_{bb}^c &= (G_0^{-1})_{bb}(q, i\omega_n) + I_B(\omega_n), \\ (G^{-1})_{fb}^c &= (G^{-1})_{BF}^c = (G_0^{-1})_{fb}(q, i\omega_n), \end{aligned} \quad (3.37)$$

where

$$I_f(\omega_n) = 2 \int_0^\beta d\tau (1 - \cos[\omega_n \tau]) (V'_F(\tilde{F}(\tau)) - V'_F[F]), \quad (3.38)$$

$$I_b(\omega_n) = 2 \int_0^\beta d\tau (1 - \cos[\omega_n \tau]) V'_B(\tilde{B}(\tau)), \quad (3.39)$$

and

$$\Sigma_F = 2\beta u_f V'_F(F). \quad (3.40)$$

The structure of the connected propagator allows one to identify several features of the RSB solutions. A mass term Σ_F is here generated and we will confirm later in this section that it indeed controls the localization length. However, $(G^{-1})_{ff}^c(q = 0, \omega_n = 0)$ is still 0, as it should for a system, that is, after averaging on disorder, translationally invariant. Finally, RSB endows the Green's functions with a new dynamical content through the functions $I_F(\omega_n)$ and $I_B(\omega_n)$.

The system of equations is effectively closed by writing an equation for the breaking point u_f . This is done by inspecting the stability of such a solution and explicitly requiring the marginality of the so-called *replicon mode*. This choice is made on physical grounds—as it gives sensible results for dynamical quantities, such as the conductivity—following the path set in Ref. [66] (details about the calculation are given in Appendix C). Finally, Eq. (3.40) is replaced by

$$\Sigma_f^{3/2} = \frac{8}{\sqrt{1-g^2}} \rho_f^2 D_f \left(\frac{\pi K_f}{v_f} \right)^{1/2} e^{-2F}. \quad (3.41)$$

Note that F , \tilde{F} , and \tilde{B} are obtained through inversion of G^{-1} . They read

$$F = \frac{2}{\beta L} \sum_{q, i\omega_n} \frac{\pi K_f}{v_f} \frac{(\frac{\omega_n^2}{v_b^2} + q^2 + \hat{I}_b(\omega_n))}{(\frac{\omega_n^2}{v_b^2} + q^2 + \hat{I}_b(\omega_n))(\frac{\omega_n^2}{v_f^2} + q^2 + \hat{I}_f(\omega_n) + \hat{\Sigma}_f) - g^2 q^4}, \quad (3.42)$$

$$\tilde{F}(\tau) = \frac{2}{\beta L} \sum_{q, i\omega_n} \frac{\pi K_f}{v_f} (1 - \cos[\omega_n \tau]) \frac{\frac{\omega_n^2}{v_b^2} + q^2 + \hat{I}_b(\omega_n)}{(\frac{\omega_n^2}{v_b^2} + q^2 + \hat{I}_b(\omega_n))(\frac{\omega_n^2}{v_f^2} + q^2 + \hat{I}_f(\omega_n) + \hat{\Sigma}_f) - g^2 q^4}, \quad (3.43)$$

$$\tilde{B}(\tau) = \frac{2}{\beta L} \sum_{q, i\omega_n} \frac{\pi K_b}{v_b} (1 - \cos[\omega_n \tau]) \frac{\frac{\omega_n^2}{v_f^2} + q^2 + \hat{I}_f(\omega_n) + \hat{\Sigma}_f}{\left(\frac{\omega_n^2}{v_b^2} + q^2 + \hat{I}_b(\omega_n)\right) \left(\frac{\omega_n^2}{v_f^2} + q^2 + \hat{I}_f(\omega_n) + \hat{\Sigma}_f\right) - g^2 q^4}. \quad (3.44)$$

One can recognize in F and \tilde{F} the fermionic propagator and in \tilde{B} the bosonic propagator. We have introduced $\hat{I}_f = \frac{\pi K_f}{v_f} I_F$, $\hat{\Sigma}_F = \frac{\pi K_f}{v_f} \Sigma_F$, and used similar notations for bosons. The complete numerical solution of this self-consistent set of functional equations is beyond the scope of the present paper, and the presence of the functions $\hat{I}_f(\omega_n)$ and $\hat{I}_b(\omega_n)$ indeed makes the situation complicated. We proceed in several steps in order to analyze the equations.

First we take $\hat{I}_f(\omega_n)$ and $\hat{I}_b(\omega_n)$ to be zero. In this case, our variational approach is analogous to the theory of Fukuyama and Suzumura, summarized in Sec. III A, however, with a more accurate treatment of quantum fluctuations that does not require a detailed knowledge of the underlying classical solution. We show that within this approximation we obtain sensible results in good agreement with the RG results.

First let us refine the RG analysis of Sec. III B by looking at the flow of \tilde{D}_b when bosons are coupled to localized fermions.

To do so, we perturb the Gaussian action S_G with a disorder term coupling only to bosons:

$$S = S_G - \frac{D_b \rho_b^2}{\Lambda^3} \sum_{a,b} \Lambda^3 \int dx d\tau d\tau' \times \cos [2\phi_b^a(x, \tau) - 2\phi_b^b(x, \tau')]. \quad (3.45)$$

The quadratic propagator G is replica symmetric in the bosonic sector and has level-1 RSB in the fermionic sector. To obtain the flow of \tilde{D}_b , we proceed as explained in Appendix B, and integrate out high-momentum degrees of freedom, between Λ' and the original cutoff Λ . To first order in D_b , the flow equation is obtained by requiring that

$$\tilde{D}_b(\Lambda') = \tilde{D}_b(\Lambda) \left(\frac{\Lambda'}{\Lambda}\right)^{-3} \langle e^{i2\phi_b^a(x, \tau)} \rangle_{>}^2. \quad (3.46)$$

$\langle e^{i2\phi_b^a(x, \tau)} \rangle_{>}^2$ is only related to the diagonal part of G_{bb} , that is, $\tilde{G}_{bb}(q, \omega_n)$. We find

$$\langle e^{i2\phi_b^a(x, \tau)} \rangle_{>}^2 = \exp \left[- \int_{\Lambda'}^{\Lambda} dq \mathcal{J}_b(q) \right], \quad (3.47)$$

with

$$\mathcal{J}_b(q) = \frac{2K_b [t(q^2 + \hat{\Sigma}_f) + q\sqrt{q^2(1-g^2) + \hat{\Sigma}_f}]}{q\sqrt{q^2(1-g^2) + \hat{\Sigma}_f} \sqrt{q^2(1+t^2) + t^2\hat{\Sigma}_f + 2tq\sqrt{q^2(1-g^2) + \hat{\Sigma}_f}}}. \quad (3.48)$$

Finally, by taking $\Lambda' = \Lambda(1 + dl)$, the flow equation reads

$$\frac{d \log D_b}{dl} = 3 - \Lambda(l) \mathcal{J}_b(\Lambda(l)). \quad (3.49)$$

$\mathcal{J}_b(q)$ has a power law decay at small and large Λ but with different prefactors. Indeed,

$$\Lambda \mathcal{J}_b(\Lambda) = 2K_b \quad \text{when} \quad \Lambda \ll (\hat{\Sigma}_f / \sqrt{1-g^2})^{1/2}, \quad (3.50)$$

$$\Lambda \mathcal{J}_b(\Lambda) = X_b \quad \text{when} \quad \Lambda \gg (\hat{\Sigma}_f / \sqrt{1-g^2})^{1/2}. \quad (3.51)$$

The crossover of the anomalous dimension appearing in Eq. (3.49) and the corresponding flow of the disorder are illustrated in Figs. 7 and 8. The flows in Fig. 8 confirm entirely our intuitive arguments in Sec. III B. The fermionic mass $\hat{\Sigma}_f$ sets a length scale below which bosons interact with their bare interactions. The corresponding length scale can thus be identified as the fermionic localization length, L_f ,

$$L_f \equiv \left(\frac{\sqrt{1-g^2}}{\hat{\Sigma}_f} \right)^{1/2}. \quad (3.52)$$

We shall return to this equation in the next section when we compute correlation functions for fermions. This RG

analysis also confirms that below $K_b = 3/2$ bosonic disorder is relevant, and the variational solution with RSB only in the fermionic sector is insufficient. To proceed and describe the phase where disorder is relevant for both species we shall need a variational solution with replica symmetry breaking in both the fermionic and the bosonic sector.

3. Phase with both species pinned by disorder and complete phase diagram

Case of faster fermions, $v_f > v_b$. In this case we found that in the regime with both species localized it is impossible to obtain a self-consistent solution with only level-1 RSB in both sectors, and one needs to allow for level-2 RSB in at least one of the sectors. It turns out, that with level-2 RSB the marginal stability (marginality) of the saddle point solution can be satisfied, and that physically meaningful results are thus obtained. Level-2 RSB is thus sufficient to describe this phase. The structure of the solution, and the derivation of the corresponding integral equations are detailed in Appendix C. The resulting (rather complicated) integral equations were solved numerically.

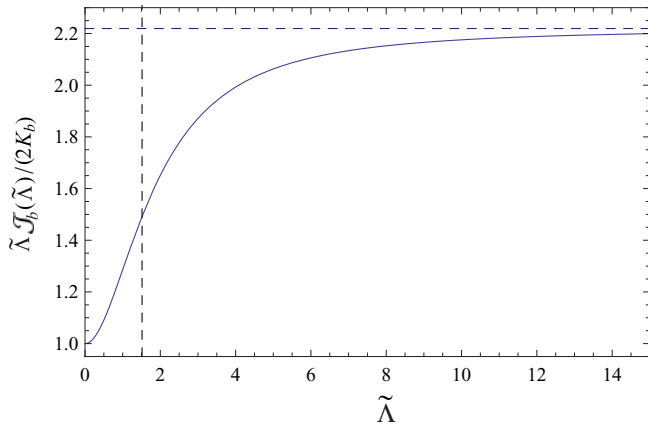


FIG. 7. (Color online) Crossover behavior of the function \mathcal{J}_b as defined in Eq. (3.48), for $t = 3$ and $g = 0.9$. Here we have plotted $\tilde{\Lambda} \mathcal{J}_b(\tilde{\Lambda})/(2K_b)$, with $\tilde{\Lambda} = \Lambda/\sqrt{\hat{\Sigma}_f}$. It goes to 1 at low momenta and saturates at $X_b/(2K_b)$ as momentum is increased. We identify a crossover region around $\Lambda = (\hat{\Sigma}_f/\sqrt{1-g^2})^{1/2}$ (vertical dashed line).

For $v_f > v_b$ we always find a stable numerical solution with 2RSB for fermions and 1RSB for bosons with the following self-energy structure: $\sigma_f(u)$ is a two-step function, $\sigma_f(u < u_1) = 0$, $\sigma_f(u_1 < u < u_2) = \sigma_f^{(1)}$, and $\sigma_f(u_2 < u < 1) = \sigma_f^{(2)}$, while $\sigma_b(u)$ is a one-step function, $\sigma_b(u < u_2) = 0$, $\sigma_b(u_2 < u < 1) = \sigma_b^{(2)}$. Note that the structure of the solution is reminiscent of the physical arguments we developed in Sec. III A for the classical solution. We argued there that in the situation where $L_b > L_f$ —which is the case in the phase diagram of Fig. 9, and apparent on Figs. 10 and 11—the fermion density wave should have a nested structure as it breaks into domains to accommodate the random phase and the bosonic density.

In Figs. 10 and 11 we show examples of the solution for various values of K_b as U_{BF} is increased. Note that the fermion mass is related to the two-step self-energy as

$$\Sigma_f = \Sigma_f^{(1)} + \Delta \Sigma_f^{(2)}, \quad (3.53)$$

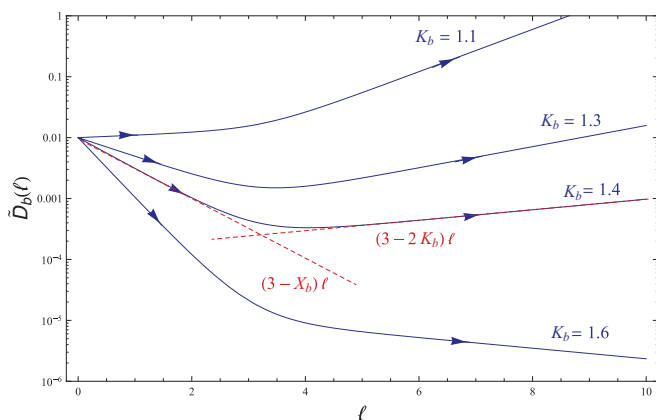


FIG. 8. (Color online) Modified RG flow for bosons using the Gaussian variational solution.

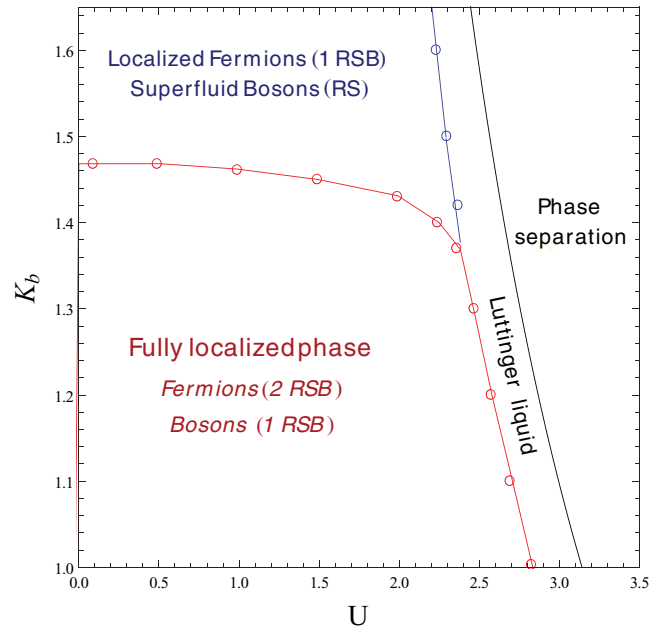


FIG. 9. (Color online) Phase diagram obtained by the Gaussian variational method in replica space as a function of K_b and $U = U_{\text{BF}}/\sqrt{v_b v_f}$. We took $\tilde{D}_f = \tilde{D}_b = 0.005$ and $t = v_f/v_b = 3$.

with $\Sigma_f^{(1)} = u_1 \sigma_f^{(1)}$, and $\Delta \Sigma_f^{(2)} = u_2 (\sigma_f^{(2)} - \sigma_f^{(1)})$. For the bosonic mass we have $\Sigma_b = u_2 \sigma_b^{(2)}$ and $L_b = \hat{\Sigma}_b^{-1/2}$. The boundary of the region where the level-2 RSB solution exists is obtained by the condition, $\Delta \Sigma_f^{(2)} = 0$. This condition is fulfilled either when $\Sigma_f^{(1)} \neq 0$, $\Sigma_b = 0$ and the system is in the region with level-1 RSB in the fermionic sector only, or when $\Sigma_f^{(1)} = 0$, $\Sigma_b = 0$ and the system is in the replica symmetric phase.

Let us notice two important points here. For any $U_{\text{BF}} \neq 0$ we obtain $\hat{\Sigma}_b \leq \hat{\Sigma}_f$, implying that the fermionic localization length is smaller than the bosonic localization length. There are two reasons for that. First, if $K_b > 1$, quantum fluctuations are more important for bosons than for fermions (for which $K_f = 1$), and tend to increase the localization length of bosons with respect to that of fermions (disorder pins the fermion density wave more efficiently). Second, Bose-Fermi interactions enhance superfluid correlations of both components of the mixture. Nevertheless, as we pointed out in Sec. II, superfluid correlations of the slower species are more strongly enhanced. This behavior appears in Figs. 10 and 11, where one can see that the mass of the slow species (here bosons) decreases to extremely small values, long before the true transition to the Luttinger liquid phase takes place, whereas the mass of the fast species (here fermions) is weakly renormalized, excepting the close proximity of the transition. This is a crucial point for the possible observation of the fully localized phase: In a finite-size system, bosons could appear as superfluid simply because their localization length exceeds the size of the trap, even though they should be localized in the thermodynamic limit.

Case of faster bosons, $v_f < v_b$. Now let us turn to the more delicate case of $v_b > v_f$. In the RG-based tentative phase diagram of Fig. 5 two intermediate regions appear, where only one of the species appears to be localized. However,

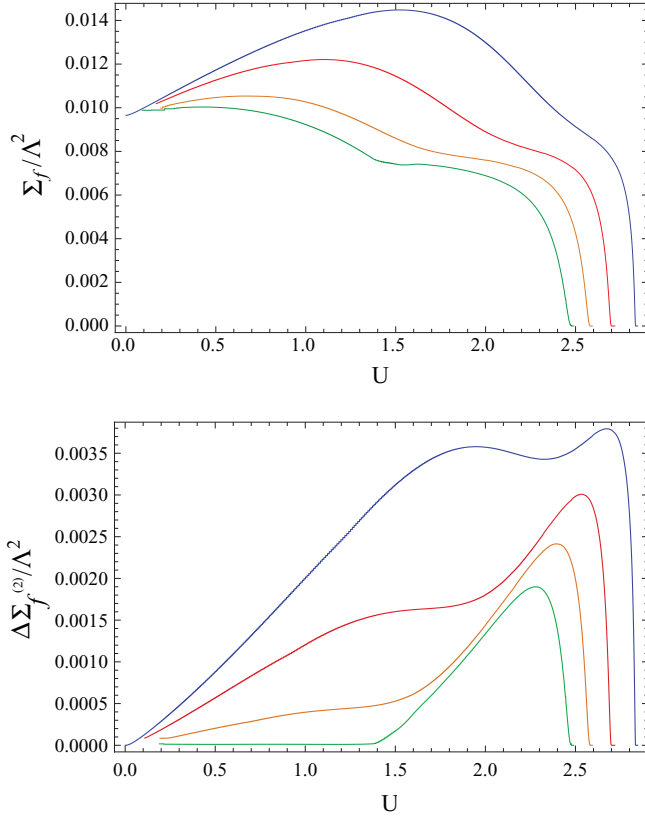


FIG. 10. (Color online) Fermion mass $\hat{\Sigma}_f$ and $\Delta\hat{\Sigma}_f^{(2)}$ as a function of $U = U_{\text{BF}}/\sqrt{v_f v_b}$, for $t = v_f/v_b = 3$ and $K_b = 1, 1.1, 1.2, 1.3$ (top to bottom). Note that $\Delta\hat{\Sigma}_f^{(2)}$ goes to zero simultaneously with $\hat{\Sigma}_f$ as U is increased.

for the same reasons as in the previous case $v_f > v_b$, these two phases are just artifacts of the RG procedure, and in each of them we need to repeat our two-step localization argument. Correspondingly, a two-step RSB shall appear in the variational solution, too. However, before discussing the phase diagram of Fig. 12, let us make a few remarks to gain a reasonable intuition for the results.

In the $v_b < v_f$ case we had established that the bosonic localization length was always larger than the fermionic one,

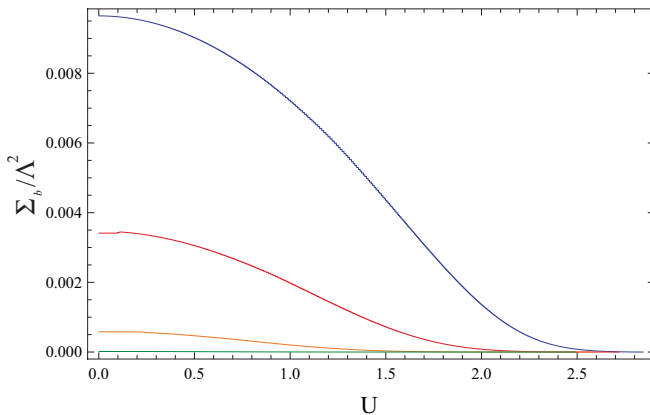


FIG. 11. (Color online) The boson mass $\hat{\Sigma}_b$ as a function of $U = U_{\text{BF}}/\sqrt{v_f v_b}$, for $t = v_f/v_b = 3$ and $K_b = 1, 1.1, 1.2, 1.3$ (top to bottom). Note that $\hat{\Sigma}_b$ goes to zero, simultaneously with $\hat{\Sigma}_f$.

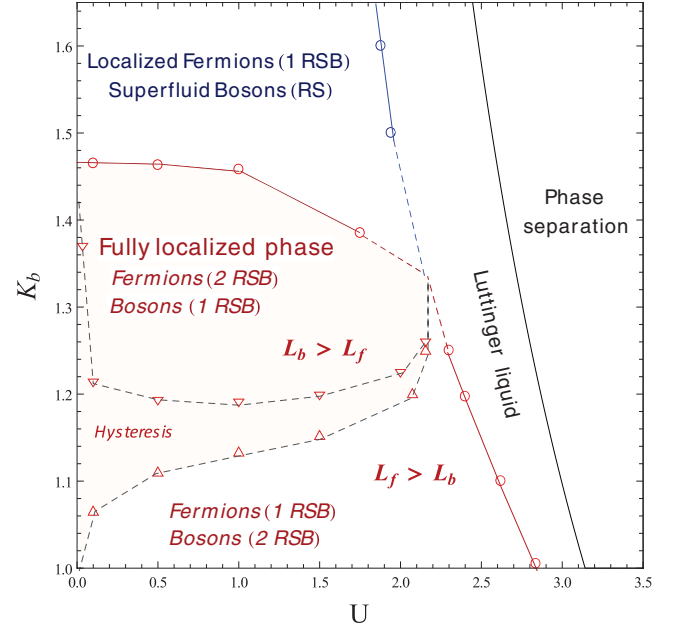


FIG. 12. (Color online) Phase diagram obtained by the Gaussian variational method in replica space, as a function of K_b and $U = U_{\text{BF}}/\sqrt{v_b v_f}$, for $\tilde{D}_f = \tilde{D}_b = 0.005$ and $v_f/v_b = 1/3$. In the fully localized phase there is crossover between two regions where the order of replica symmetry breaking is reverted.

because of (i) larger quantum fluctuations ($K_b \geq K_f$) and (ii) because of the enhancement of superfluid correlations of the slow species because of interactions. In the present case the situation is somewhat different. Along the line $K_b = K_f = 1$, bosons are now the faster species, and their localization length is now smaller than that of fermions. This translates into an inversion of the levels of symmetry breaking in the fermionic and bosonic sectors. However, as soon as $K_b > 1$, larger quantum fluctuations for bosons counteract this effect, and if K_b is large enough, then the bosonic localization length exceeds the fermionic one again, and the order of replica symmetry breaking is reversed.

This can be clearly seen in Fig. 12, where we show the phase diagram emerging from a full numerical solution of the integral equations. We indeed find an inversion of the levels of symmetry breaking. We have to point out here that the numerical solution has a *hysteresis*: We obtain a different phase boundary by increasing K_b at fixed U_{BF} instead of decreasing it. This can be explained by the asymmetric structure of the equations for the 2RSB + 1RSB solutions (see Appendix C, K_b playing a singular role). The appearing hysteresis could be a signature of a first-order transition, too, however, on physical grounds we tend to believe that there is simply a crossover between the 2RSB + 1RSB and 1RSB + 2RSB regimes. We emphasize again that the difference between the two cases, $v_f > v_b$ and $v_b > v_f$, is related to the inversion of length scales that can only take place for $v_b > v_f$.

IV. EXPERIMENTAL CONSEQUENCES

In this section we present a few observables that we believe would help to characterize the various phases in an experiment on cold atoms. One possibility is provided by

time-of-flight (TOF) experiments, measuring the momentum distribution of the gas inside the trap. For bosons, TOF provides an indirect measurement of the superfluid correlations (and the single-particle Green's function), the behavior of which varies significantly from the localized to the superfluid phase. Another usual probe is Bragg scattering, giving access to structure factors, that is, the Fourier transform of the density-density correlation functions. The latter quantity we already computed in Ref. [48]. Here we briefly present how one can compute both density correlations (to compute the structure factor, for instance) and superfluid correlations from the variational method. Then we apply these results to study the relevant physical quantities.

A. Density correlations

Density correlations are of the form $\overline{\langle \rho(x,t)\rho(0,0) \rangle}$, where, as usual, brackets stand for the quantum averaging and overlining denotes averaging over disorder realizations. In practice we will use the variational solution in replica space, and more precisely the diagonal Green's functions. As experimentalists can address each species separately, we will focus on $\overline{\langle \rho_f(x,t)\rho_f(0,0) \rangle}$ and $\overline{\langle \rho_b(x,t)\rho_b(0,0) \rangle}$ and shall not consider cross terms for now. It is instructive to look at the two particular terms:

$$C_f(x) = \overline{\langle e^{i2\phi_f(x)} e^{-i2\phi_f(0)} \rangle}, \quad (4.1)$$

$$C_b(x) = \overline{\langle e^{i2\phi_b(x)} e^{-i2\phi_b(0)} \rangle}, \quad (4.2)$$

which characterize the $q \approx 2\pi\rho_{b \text{ or } f}$ -momentum density-density correlations [see Eq. (2.7)]. In order to compute C_f and C_b , one first needs to recall the gauge transformation that we performed to get rid of the forward scattering processes. Once included they lead to an exponential decay of C_f and C_b in every phase, localized or not. The general form of $C_\alpha(x)$ is, therefore,

$$C_f(x) = \exp[-x/L_{f,\text{FW}}] \times \exp\left[-2\frac{1}{\beta L} \sum_{q,\omega_n} (1 - \cos[qx]) \tilde{G}_{ff}(q,\omega_n)\right], \quad (4.3)$$

$$C_b(x) = \exp[-x/L_{b,\text{FW}}] \times \exp\left[-2\frac{1}{\beta L} \sum_{q,\omega_n} (1 - \cos[qx]) \tilde{G}_{bb}(q,\omega_n)\right], \quad (4.4)$$

where

$$L_{f,\text{FW}} = \frac{(1-g^2)^2}{K_f^2/v_f^2} \left[\alpha_f - \alpha_b g \sqrt{\frac{v_f K_b}{v_b K_f}} \right]^{-2} D_f^{-1}, \quad (4.5)$$

$$L_{b,\text{FW}} = \frac{(1-g^2)^2}{K_b^2/v_b^2} \left[\alpha_b - \alpha_f g \sqrt{\frac{v_b K_f}{v_f K_b}} \right]^{-2} D_b^{-1}, \quad (4.6)$$

are length scales related to disorder forward scattering (FW). In the localized phases, backscattering also leads to an exponential decay of these correlation functions, and it might therefore be difficult to disentangle contributions from forward and backward scattering. Therefore, experimentally, one should rather focus on correlation functions, which are not influenced by the forward scattering contribution (see

Secs. IV B and IV C). It is nevertheless instructive to write down the explicit form of $C_f(x)$ and $C_b(x)$.

Let us start with the Luttinger liquid phase. There, the mixture is not pinned by disorder and the self-energies σ_f and σ_b are zero. The inversion of G^{-1} leads to

$$\tilde{G}_{ff}(q,\omega_n) = \frac{\pi K_f}{v_f} \frac{q^2 + b(\omega_n)}{[q^2 + b(\omega_n)][q^2 + f(\omega_n)] - g^2 q^4}, \quad (4.7)$$

$$\tilde{G}_{bb}(q,\omega_n) = \frac{\pi K_b}{v_b} \frac{q^2 + b(\omega_n)}{[q^2 + f(\omega_n)][q^2 + f(\omega_n)] - g^2 q^4}. \quad (4.8)$$

Here we have introduced the following general notation,

$$b(\omega_n) = \omega_n^2/v_b^2 + \hat{I}_b(\omega_n) + \hat{\Sigma}_b, \quad (4.9)$$

$$f(\omega_n) = \omega_n^2/v_f^2 + \hat{I}_f(\omega_n) + \hat{\Sigma}_f. \quad (4.10)$$

In the present case $\hat{\Sigma}_f = \hat{\Sigma}_b = 0$, and therefore we recover the propagators of the Luttinger liquid, with simply a renormalization of the frequency behavior by the functions $\hat{I}_b(\omega_n)$ and $\hat{I}_f(\omega_n)$. Note that these functions are directly proportional to \tilde{D}_f and \tilde{D}_b . Although we have not solved the self-consistency equations for $\hat{I}_f(\omega_n)$ and $\hat{I}_b(\omega_n)$, we expect that in the weak disorder limit they do not modify drastically the propagators. In the Luttinger liquid phase, C_f and C_b thus decay algebraically at short distances, however, this algebraic decay is cut at long distances by the exponential decay due to disorder-induced forward scattering processes.

Now let us turn to the phase where fermions are localized and bosons superfluid. Here we found a variational solution with 1RSB in the fermionic sector. The inversion of G^{-1} now leads to

$$\tilde{G}_{ff}(q,\omega_n) = \frac{\pi K_f}{v_f} \left(\frac{q^2 + b(\omega_n)}{[q^2 + b(\omega_n)][q^2 + f(\omega_n)] - g^2 q^4} + \delta_{n,0} \frac{1}{1 - g^2} \frac{\sigma_f}{q^2[q^2(1 - g^2) + \hat{\Sigma}_f]} \right), \quad (4.11)$$

$$\tilde{G}_{bb}(q,\omega_n) = \frac{\pi K_b}{v_b} \left(\frac{q^2 + f(\omega_n)}{[q^2 + b(\omega_n)][q^2 + f(\omega_n)] - g^2 q^4} + \delta_{n,0} \frac{g^2}{1 - g^2} \frac{\sigma_f}{q^2[q^2(1 - g^2) + \hat{\Sigma}_f]} \right). \quad (4.12)$$

In each propagator, the first term controls the algebraic short distance decay of correlations. The second term, once the sum over momenta is done, leads to a long distance exponential decay. Indeed,

$$\begin{aligned} & \frac{1}{L} \sum_q \frac{1 - \cos[qx]}{q^2[q^2(1 - g^2) + \hat{\Sigma}_f]} \\ &= \frac{1}{2\hat{\Sigma}_f} \left[x + \sqrt{\frac{1 - g^2}{\hat{\Sigma}_f}} \left(e^{-x\sqrt{\frac{\hat{\Sigma}_f}{1 - g^2}}} - 1 \right) \right]. \end{aligned} \quad (4.13)$$

Furthermore $\sigma_f = \beta \frac{v_f}{\pi K_f} \sqrt{1 - g^2} \Sigma_f^{3/2}$, and one can isolate in C_f , a decaying exponential of the form,

$$C_f(x) \sim e^{-x/L_f}, \quad (4.14)$$

with

$$L_f = \left(\frac{1 - g^2}{\hat{\Sigma}_f} \right)^{1/2}, \quad (4.15)$$

which we are tempted to identify with the localization length. Remarkably, although only the fermions are localized, bosonic correlations also display an extra exponential decay, with an exponent smaller by a factor g^2 . This contribution comes directly from the Bose-Fermi interaction term $\nabla\phi_f\nabla\phi_b$ where $\nabla\phi_f$ acts as a random potential inducing forward scattering. The expressions for the propagators in the fully localized phase are given in Appendix D. At this stage we think that probing the dynamics of the system, through the dynamical structure factor, would be a better way to test the level of replica symmetry breaking.

B. Structure factors

The dynamical structure factors $S_{b \text{ or } f}(q, \omega)$ are response functions which can be probed through Bragg scattering experiments [67,68]. They are defined by

$$S_{b \text{ or } f}(q, \omega) = \int \int dt dx e^{iqx - i\omega t} \overline{\langle \rho_{b \text{ or } f}(x, t) \rho_{b \text{ or } f}(0, 0) \rangle}. \quad (4.16)$$

Using Eq. (2.7), we can see that several Fourier components contribute to the structure factors. However, at small momenta, $q \ll 2\pi\rho_{b \text{ or } f}$, it is essentially given by

$$S_{b \text{ or } f}(q, \omega) \approx \int \int \frac{dt dx}{\pi^2} e^{iqx - i\omega t} \overline{\langle \partial_x \phi_{b \text{ or } f}(x, t) \partial_x \phi_{b \text{ or } f}(0, 0) \rangle}, \quad (4.17)$$

which, in turn, can be computed with the variational solution. Note that we ignore here the static contribution from the forward scattering on disorder [48]. For fermions it reads

$$S_f(q, \omega) = -\text{Im}[q^2 \tilde{G}_{ff}(q, i\omega_n \rightarrow \omega + i\epsilon)], \quad (4.18)$$

and we have a similar expression for bosons. Here, \tilde{G}_{ff} is the replica-diagonal contribution for the fermion propagator. The complete analytical expression of S_f is given in Appendix D. To perform the analytical continuation it is necessary to elaborate on the expression of functions I_f and I_b . The only thing that seems analytically feasible is to adapt the argument of Ref. [66] to the case of a mixture. In the fully localized phase, I_b and I_f are given by Eqs. (C16) and (C17) of Appendix C and one can obtain two simple self-consistent equations by assuming that $K_f \ll 1$ and $K_b \ll 1$ (thus taking a sort of classical limit) and expanding the functions V_f and V_b to leading order. In addition, by taking the limit $\Sigma_b \ll \Sigma_f$ we arrive at the following approximate expressions, at low frequency, $I_f(\omega) \sim \alpha_f \omega$ and $I_b(\omega) \sim \alpha_b \omega$ with

$$\alpha_f = \sqrt{\Sigma_f} \frac{2}{\sqrt{3}} (1 + t^2 g^2), \quad (4.19)$$

$$\alpha_b = \sqrt{\Sigma_b} \frac{2}{\sqrt{3}}. \quad (4.20)$$

If $g = 0$ we get back the expression of Ref. [66]. It appears that the relevant parameters for our model fall off the domain of validity of this approximation. Nevertheless, in order to get at least a qualitative view of the structure factor, we perform the analytical continuation on these expressions for I_f and I_b .

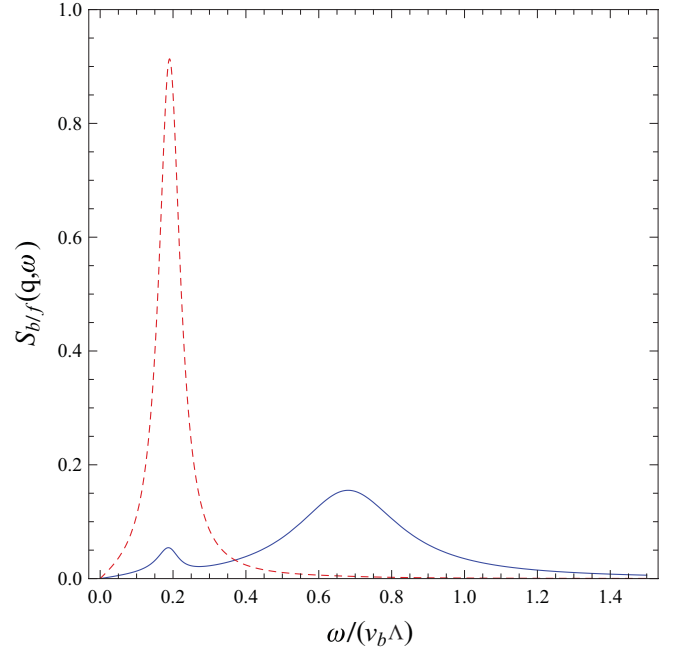


FIG. 13. (Color online) Frequency dependence of the structure factor for bosons (red dashed line) and fermions (blue solid line) in the fully localized phase. Momentum is fixed to $q = 0.2\Lambda$ with Λ the UV cutoff of the theory. The boson velocity v_b is taken to be equal to 1, making the structure factors dimensionless.

In the fully localized phase, the structure factor for small momenta $q \ll 2\pi\rho_{b \text{ or } f}$ has the profile depicted in Fig. 13. There we took the following parameters: $K_b = K_f = 1$, $v_f/v_b = 3$, $U_{BF}/\sqrt{v_f v_b} = 1.5$ ($g = 0.47$). From the results of Figs. 10 and 11, we also took $\hat{\Sigma}_f/\Lambda^2 = 0.014$ and $\hat{\Sigma}_b/\Lambda^2 = 0.0045$. Several interesting features appear at this level. The fermion structure factor shows a two-peak profile, due to the strongly coupled nature of the fully localized phase. The main peak is at a frequency $\omega/v_b \approx t\sqrt{q^2 + \hat{\Sigma}_f}$ and has a width controlled by $\sqrt{\hat{\Sigma}_f}$ while the “bosonic” peak is at $\omega/v_b \approx \sqrt{q^2 + \hat{\Sigma}_b}$ and has a width controlled by $\sqrt{\hat{\Sigma}_b}$. As a consequence, the “bosonic” peak is much sharper than its fermionic counterpart, a sign of the enhancement of the bosonic localization length, by interactions, in the fully localized phase. The bosonic structure factor shows only one peak at $\omega/v_b \approx \sqrt{q^2 + \hat{\Sigma}_b}$. In that particular case, the extra peak is obscured by the vicinity of the main peak.

C. Superfluid correlations

By adapting the variational method, it is possible to proceed and try and compute superfluid correlations. This calculation is, however, somewhat delicate: While equal time correlation functions are found to behave in a meaningful way, unequal-time correlation functions are apparently pathological [69]. The reason is that the bosonic field operator $\psi_b(x) \sim e^{i\theta_b(x)}$ creates a soliton in the field configuration (shifts the density wave), which costs infinite energy in the Gaussian approximation of pinning by disorder. Therefore, unequal time correlation functions turn out to vanish identically.

We therefore restrict ourselves to equal time correlation functions. As we shall see, the variational method seems to give physically reasonable results for these quantities, though the results of this subsection should be taken with some caution.

The quantity we want to compute is

$$A_b(x) = \overline{\langle e^{i\theta_b(x)} e^{-i\theta_b(0)} \rangle}. \quad (4.21)$$

Note that the original action depends on both θ and ϕ . It is only by integrating out θ fields that we were able to write an effective action depending only on ϕ fields and then proceed to the variational calculation. By doing so one can easily compute the correlation functions depending only on ϕ . However, the original action is really of the form (after introducing replicas and averaging over disorder),

$$S_0^{\text{rep}} = \sum_{a=1}^n \sum_{\alpha=f,b} \int dx d\tau \left[i \partial_x \theta_\alpha^a \partial_\tau \phi_\alpha^a + \frac{v_\alpha}{2\pi K_\alpha} (\partial_x \theta_\alpha^a)^2 + \frac{v_\alpha K_\alpha}{2\pi} (\partial_x \phi_\alpha^a)^2 \right] + \frac{U_{\text{BF}}}{\pi^2} \int dx d\tau \partial_x \phi_f^a \partial_x \phi_b^a, \quad (4.22)$$

$$S_{\text{dis}}^{\text{rep}} = -D_f \rho_f^2 \sum_{a,b} \int dx d\tau d\tau' \cos [2\phi_f^a(x, \tau) - 2\phi_f^b(x, \tau')] - \frac{D_b \rho_b^2}{\hbar} \sum_{a,b} \int dx d\tau d\tau' \cos [2\phi_b^a(x, \tau) - 2\phi_b^b(x, \tau')]. \quad (4.23)$$

One can then replace $S_{\text{dis}}^{\text{rep}}$ by the self-energy σ^{ab} obtained from the variational calculation. With this approximation, one ends up with a quadratic action and is able to compute the propagator $\langle \theta_b^a(q, \omega_n) \theta_b^a(-q, -\omega_n) \rangle$ (using inversion formulas for hierarchical matrices [65]). In the end, we find the following form, irrespective of the level of replica symmetry breaking:

$$\begin{aligned} & \langle \theta_b^a(q, \omega_n) \theta_b^a(-q, -\omega_n) \rangle \\ &= \frac{\pi}{v_b K_b} \frac{[q^2 + \hat{I}_b(\omega_n) + \hat{\Sigma}_b][q^2 + f(\omega_n)] - g^2 q^4}{q^2 [[q^2 + f(\omega_n)][q^2 + b(\omega_n)] - g^2 q^4]}. \end{aligned} \quad (4.24)$$

The function $\hat{I}_b(\omega_n)$ depends on the state of bosons (superfluid or localized) and $\hat{\Sigma}_b = 0$ in the superfluid phase. In addition, $\hat{I}_f(\omega_n)$ and $\hat{\Sigma}_f$ vary from phase to phase. We study this function in more detail in the next section.

D. Time of flight

TOF experiments aim at measuring the momentum distribution inside the trap. To do so one releases the trap, then, after a given time t of free expansion, one images the density of the atomic cloud. In the case of a quasi-1D tube, and for long enough times t , the average density at point \mathbf{r} is approximately $\langle \psi_b^\dagger(\mathbf{r}) \psi_b(\mathbf{r}) \rangle_t \simeq W(y, z) \langle n_{Q(x)} \rangle$ with $W(y, z)$ a Gaussian envelope (resulting from the transverse confinement in directions y and z , in a given tube), $\langle n_{Q(x)} \rangle$ the momentum

distribution in the longitudinal direction, and $Q(x) = M_b x/t$ [70]. A detailed calculation actually leads to

$$\langle \psi_b^\dagger(\mathbf{r}) \psi_b(\mathbf{r}) \rangle_t \propto \int_0^L dx_1 \int_0^L dx_2 e^{-iQ(x)(x_1-x_2)} \langle \psi_b^\dagger(x_1) \psi_b(x_2) \rangle, \quad (4.25)$$

where we have introduced here a finite size L for each tube. In our case, the long-distance asymptotic behavior of the 1D single-particle Green's function is $\langle \psi_b^\dagger(x_1) \psi_b(x_2) \rangle \simeq \rho_b A_b(x_1 - x_2)$, with $A_b(x)$ given in (4.21). Typically, the right-hand side of (4.25) is the convolution of the Fourier transform of $A_b(x)$ —that is, the momentum distribution—and a function similar to a rectangle of width $1/L$, imposing an infrared cutoff. In an infinitely long tube, without disorder, and at zero temperature, $A_b(x) \sim x^{-1/(2K_b)}$, for $x \gg \Lambda^{-1}$, and Λ the UV cutoff. Correspondingly, its Fourier transform, $n_b(q)$ is typically a power law, too, $n_b(q) \sim q^{1/(2K_b)-1}$ for $q \ll \Lambda$. At large q it is known to decay as q^{-4} , for the Lieb-Liniger model [71]. For a finite size system the power-law behavior is cut, and for $q < 1/L$ one finds $n_b(q=0) \sim L^{2-1/(2K_b)}$. These regimes were indeed observed experimentally in Ref. [72]. Note that at finite temperature, the infrared cutoff is given by $q_0 = \max\{1/L, 1/v_b \beta\}$ since the quasi-long-range order is destroyed beyond the thermal length $v_b \beta$.

For localized bosons, the localization length L_b plays a role similar to that of the size of the system or the thermal length. We cannot compute $A_b(x)$ for a finite size system at finite temperature. Therefore, in Fig. 14 we just plot $n_b(q)$, for an infinite system at zero temperature in the fully localized phase. In this case $A_b(x)$ can simply be expressed as $A_b(x) = \exp[-\frac{1}{2}(\theta_b^a(x) - \theta_b^a(0))^2]$, with

$$\begin{aligned} \langle [\theta_b^a(x) - \theta_b^a(0)]^2 \rangle &= \frac{1}{\beta L} \sum_{|q| < \Lambda, \omega_n} 2[1 - \cos(qx)] \\ &\times \langle \theta_b^a(q, \omega_n) \theta_b^a(-q, -\omega_n) \rangle. \end{aligned} \quad (4.26)$$

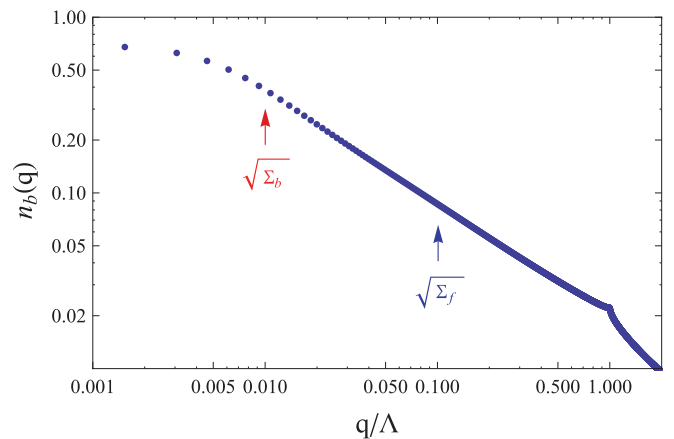


FIG. 14. (Color online) Momentum distribution $n_b(q)$ (Fourier transform of $\rho_b A_b(x)$, dimensionless) in the fully localized phase. We have taken $v_f/v_b = 9$, $K_b = 1.3$, and $g = 0.4$. In addition, $\hat{\Sigma}_f = 0.01\Lambda$ and $\hat{\Sigma}_b = 0.0001\Lambda$. Related momentum scales, $\sqrt{\hat{\Sigma}_f}$ and $\sqrt{\hat{\Sigma}_b}$, are pinpointed on the plot. Momentum q is in units of the UV cutoff Λ .

Here the sum over momenta is limited by the UV cutoff Λ , which explains the cusp for $q = \Lambda$. For $q < \Lambda$ we find the power law associated with Luttinger liquid physics, but of course, the true behavior for $q > \Lambda$ is cutoff dependent, and is not captured by our simple cutoff scheme. For $q < \sqrt{\Sigma_b}$ the distribution bends away from the algebraic law. This is a signature of the localization of the bosonic gas on a typical length scale $L_b \sim 1/\sqrt{\Sigma_b}$, and the exponential decay of $A_b(x)$ at large distances. We also indicated the position of $\sqrt{\Sigma_f}$. Indeed, boson interactions are renormalized on length scales smaller than the localization length of fermions. We therefore expect a crossover between two power-law behaviors with different exponents. Here for the values of the parameter we have chosen, the renormalization of the exponent is rather small (~ 0.85 of its initial value). The most prominent effect is thus that of the infrared cutoff introduced by the localization length. The small-momentum saturation of $n_b(q)$ induced by the localization should be an observable effect as long as $L_b < L, v_b\beta$.

V. CONCLUSION

In this article, we have studied in detail a 1D mixture of bosons and fermions in a random potential. More precisely we have considered the localization of the gas by analyzing the pinning of density waves by weak disorder. In the case of incommensurate densities, to which we focused throughout this paper, the two components of the gas are coupled to Fourier components of the random potential that are effectively uncorrelated. The two density waves are, however, coupled through the Bose-Fermi interactions. Using renormalization group methods as well as a self-consistent harmonic approximation in replica space, we arrived at the following general conclusions:

(a) For weak disorder, the phase diagram can be plotted adequately as a function of two parameters, the Luttinger parameter K_b for bosons, and the Bose-Fermi interaction parameter U_{BF} . The structure of the phase diagram and the properties of the phases depend on a third parameter, the ratio of sound velocities, v_f/v_b . Whatever the value of this ratio, we can identify three distinct phases: (i) a two-component Luttinger liquid, dominated by superfluid correlations for bosons and pair correlations for fermions, (ii) a fully localized phase where both components of the gas are pinned by disorder, and (iii) an intermediate phase where fermions are localized and bosons are superfluid. In Fig. 15 we propose a translation of the diagram of Fig. 6 to microscopic parameters relevant for an experiment using a mixture of ^{87}Rb and ^{40}K [35]. This translation is done along the lines detailed in Ref. [48].

(b) The properties of the fully localized phase depend strongly on the strength of Bose-Fermi interactions as well as on the ratio of velocities. Both from the RG and from the variational calculations we conclude that this phase is characterized by two length scales, L_f and L_b , which can be identified as the fermionic and bosonic localization lengths. Beyond these length scales the phase correlations of the density waves are lost. For strong Bose-Fermi interactions, these two length scales can be very different. In the case

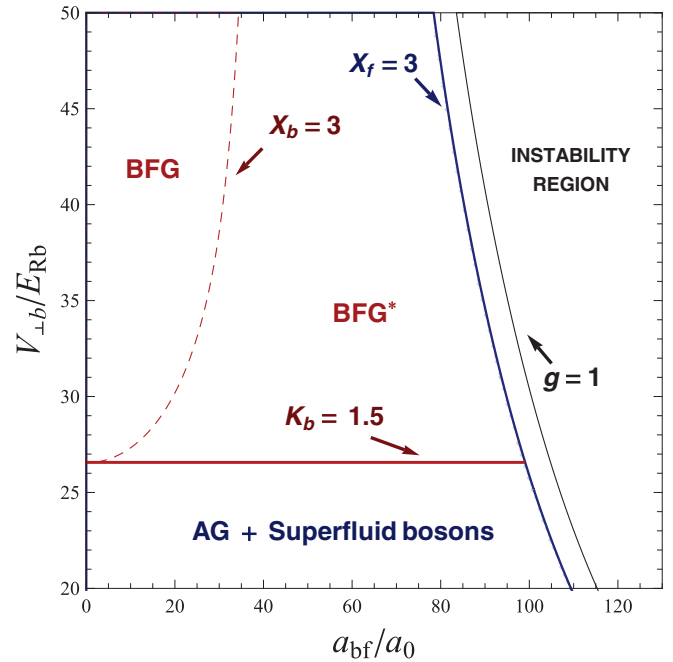


FIG. 15. (Color online) Phase diagram of a 1D ^{87}Rb - ^{40}K Bose-Fermi mixture, in the weak disorder limit. We consider an array of tubes, created with lasers of wavelength $\lambda = 755$ nm, which corresponds to a (2D) lattice constant $d = \lambda/2$. We take $a_{bb} = 100a_0$ as Bose-Bose scattering length, while the Bose-Fermi scattering length, a_{BF} , is tuned using a Feshbach resonance. The one-dimensional densities are chosen to be $\rho_f d = 0.3$ and $\rho_b d = 0.2$. The recoil energy is $E_{R,b} = \hbar^2 \lambda^{-2} / (2m_{Rb})$, while $V_{\perp b}$ is the transverse confining potential creating the 1D tubes. The Bose-Bose interaction U_b increases with $V_{\perp b}$. Note that despite a superficial similarity between the present figure and, for instance, Fig. 6, the vertical axis is reverted since K_b decreases as U_b increases. Four phases and the region of instability of the Luttinger liquid theory are shown. BFG, Bose-Fermi glass; BFG*, BFG with an extremely large bosonic localization length; AG_{SFB}, Anderson glass + superfluid bosons; LL, Luttinger liquid.

where $v_f > v_b$ (and for similar amplitudes of the disorder), L_b is larger than L_f for two reasons: First, because $K_b > K_f$ and therefore quantum fluctuations tend to suppress more strongly the pinning of the bosonic density wave, and second, because despite localization, fast fermionic phonons screen repulsive bosonic interactions and increase L_b further. In the case $v_b > v_f$ on the other hand, the order of L_f and L_b can be reverted, because quantum fluctuations through K_b and the effective attractive interactions for the fermions have competing effects on localization.

(c) In any case, for a finite size system, it is likely that one of the localization lengths exceeds the size of the system. One of the species would then appear as delocalized. In addition, finite temperature can overshadow the effects of disorder if the thermal length is comparable to one of the localization lengths.

Experimentally, the localization phase transition can be most easily observed in correlation functions, which uniquely depend on the phase. For the bosons, such a quantity is provided by the momentum distribution $n_b(q)$ of the quasicondensate, which is directly measurable through time-of-flight (TOF) experiments. As shown in Fig. 14 and sketched in

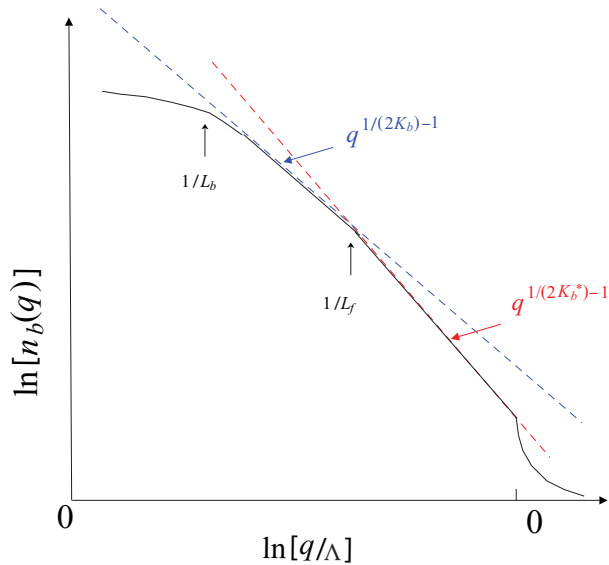


FIG. 16. (Color online) The momentum distribution of bosons in the fully localized phase exhibits a saturation for momenta below $1/L_b$. Above this threshold, we identify a crossover between two algebraic regimes. Bosonic interactions are renormalized by Bose-Fermi interactions on length scales smaller than the fermionic localization length L_f . Indeed for $q > 1/L_f$ the exponent of the power law is renormalized by BF interactions, while for $1/L_b < q < 1/L_f$ the exponent is controlled by bare interactions.

Fig. 16, there bosonic localization should simply be observed as a saturation of $n_b(q)$ at momenta smaller than $\sim 1/L_b$, provided temperature is low enough [if the thermal length $v_b/(k_B T)$ is smaller than L_b then localization is obscured by thermal fluctuations].

Unfortunately, pure fermionic phase correlations are much more difficult to access. They appear as p -wave superconducting fluctuations, and would probably be only measurable through rather difficult noise correlation measurements. However, the fermionic localization does have an impact on $n_b(q)$ and should also be visible in the dynamical structure factor. Indeed we computed the latter quantity using our variational solution in replica space. As sketched in Fig. 17, it can distinguish between localized and superfluid phases. Several key features are to be noted. First, the presence of two peaks in each phase is a direct consequence of the strong coupling—through Bose-Fermi interactions—between both components of the gas, even in the fully localized phase. Second, the width of the peaks in the localized phases is controlled by the inverse of the localization lengths. For the parameters of Fig. 15 where fermions are the fast component, $L_b \gg L_f$ in the fully localized phase, and the bosonic peak is much sharper than its fermionic counterpart. In the intermediate phase, where bosons are superfluid it becomes a Dirac delta. Note that according to our analysis of the dynamical functions I_f and I_b —see Eqs. (4.19) and (4.20) as well as (D12) and (D13)—in both localized phases the structure factor grows linearly at small frequencies. In the Luttinger liquid phase one should be able to retrieve the two sound modes from the peak positions, $\omega_+ = v_+ q$ and $\omega_- = v_- q$. One should also bear in mind that for nonzero q , deviations from the

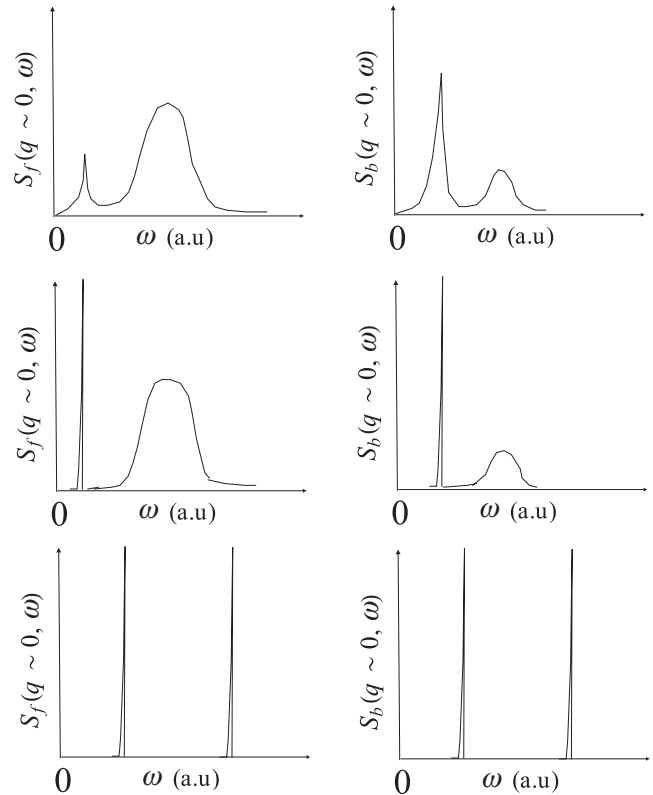


FIG. 17. Sketch of the structure factor (arbitrary units)—for bosons and fermions—in the three phases identified in Fig. 15. (Top panel) Fully localized phase, (middle panel) intermediate phase with localized fermions and superfluid bosons, and (bottom panel) Luttinger liquid phase. The presence of two peaks in each phase is characteristic of the strong coupling between the two components of the gas, even in the localized phases. In the latter the widths of the peaks are inversely proportional to the localization lengths.

linear dispersion (assumed in a Luttinger liquid description) will lead to a broadening of these peaks. It then might be difficult to distinguish peaks from the Luttinger liquid phase and peaks from the localized phase in the case of very large localization lengths. The comparison will be easier for short localization lengths, a regime likely to be attained for either strong bosonic repulsions (Tonks-Girardeau regime) or small Bose-Fermi interactions.

Finally, we would like to point out that dynamical quantities are key observables to investigate the effects of the various levels of replica symmetry breaking. Here we computed the structure factors at low momenta by making simple approximations for the dynamical parts of the self-energies. It remains to solve completely the system of self-consistent equations to obtain a definitive view on the structure factor, to go beyond the sketches presented in Fig. 17.

ACKNOWLEDGMENTS

We acknowledge fruitful discussions with K. Damle, T. Giamarchi, L. Glazman, N. Laflorencie, and L. Sanchez-Palencia. Part of this work has been carried on thanks to the support of the Institut Universitaire de France, and Hungarian research funds OTKA and NKTH under Grants No. K73361

and No. CNK80991. G.Z. acknowledges support from the Humboldt Foundation and the DFG.

APPENDIX A: NORMAL MODES OF THE HOMOGENEOUS BOSE-FERMI MIXTURE

Starting from the Hamiltonian of Eq. (2.15), one uses standard diagonalization methods to find

$$H = \sum_{\alpha=\pm} \frac{v_\alpha}{2\pi} \int dx \left[K_\alpha (\nabla\theta_\alpha)^2 + \frac{1}{K_\alpha} (\nabla\phi_\alpha)^2 \right], \quad (\text{A1})$$

with $K_\pm = 1$, and

$$v_\pm^2 = \frac{1}{2}(v_f^2 + v_b^2) \pm \frac{1}{2}\sqrt{(v_f^2 - v_b^2)^2 + 4g^2v_f^2v_b^2}, \quad (\text{A2})$$

where $g = \frac{U_{\text{BF}}}{\pi} \sqrt{\frac{K_f K_b}{v_f v_b}}$ is a dimensionless parameter. Transformation rules between the fields (ϕ_f, ϕ_b) and (ϕ_+, ϕ_-) are related as $\phi_f = f_+\phi_+ + f_-\phi_-$, $\phi_b = b_+\phi_+ + b_-\phi_-$, with the coefficients defined as follows:

$$f_+ = \sqrt{\frac{K_f v_f}{v_+}} \sin(\theta), \quad f_- = \sqrt{\frac{K_f v_f}{v_-}} \cos(\theta),$$

$$b_+ = \sqrt{\frac{K_b v_b}{v_+}} \cos(\theta), \quad b_- = -\sqrt{\frac{K_b v_b}{v_-}} \sin(\theta).$$

A similar transformation relates (θ_f, θ_b) to (θ_+, θ_-) , that is, $\theta_f = \bar{f}_+\theta_+ + \bar{f}_-\theta_-$ and $\theta_b = \bar{b}_+\theta_+ + \bar{b}_-\theta_-$. Coefficients for this transformation are

$$\bar{f}_+ = \sqrt{\frac{v_+}{K_f v_f}} \sin(\theta), \quad \bar{f}_- = \sqrt{\frac{v_-}{K_f v_f}} \cos(\theta),$$

$$\bar{b}_+ = \sqrt{\frac{v_+}{K_b v_b}} \cos(\theta), \quad \bar{b}_- = -\sqrt{\frac{v_-}{K_b v_b}} \sin(\theta).$$

The rotation angle θ is defined by

$$\cos(2\theta) = \frac{v_b^2 - v_f^2}{v_+^2 - v_-^2}, \quad \sin(2\theta) = \frac{2g v_f v_b}{v_+^2 - v_-^2}. \quad (\text{A3})$$

One can check that for $U_{\text{BF}} = g = 0$,

$$f_+ = \sqrt{K_f}, \quad f_- = 0, \\ b_- = \sqrt{K_b}, \quad b_+ = 0, \quad (\text{A4})$$

$$v_+ = v_f, \quad v_- = v_b, \quad \text{if } v_f > v_b, \\ f_+ = 0, \quad f_- = \sqrt{K_f}, \\ b_- = 0, \quad b_+ = \sqrt{K_b}, \quad (\text{A5})$$

APPENDIX B: RG CALCULATION

The renormalization group (RG) relies upon the assumption that all important phenomena occur over length scales much larger than a microscopic length Λ^{-1} . In our case, we use a hydrodynamic theory, and Λ^{-1} can be identified as the mean interparticle distance (i.e., $\Lambda \sim \rho$, the mean density). At each RG step we integrate out high momentum excitations by reducing the cutoff $\Lambda \rightarrow \Lambda'$, while renormalizing the parameters of the Hamiltonian—and possibly generating new couplings—and thereby generate an RG trajectory.

In a system with quenched disorder the thermodynamic quantity of interest is the average free energy F ,

$$-\beta F = \overline{\ln Z}. \quad (\text{B1})$$

Here Z is the partition function for a given realization of the random potential, and the overbar denotes averaging over disorder. To compute (B1) we use the so-called replica trick [64]: We introduce n identical copies of the system, average over the disorder, and then take the limit $n \rightarrow 0$,

$$\lim_{n \rightarrow 0} \frac{1}{n} \ln \overline{Z^n} = \overline{\ln Z}. \quad (\text{B2})$$

In practice, we work with $\overline{Z^n}$ to perform the RG. Using a path integral formulation, the partition function Z reads

$$Z = \int D\phi_f D\phi_b e^{-S[\phi_f, \phi_b]}. \quad (\text{B3})$$

Here the action $S = S_0 + S_{\text{dis}}$ is given by Eqs. (3.13) and (3.14). Assuming that ξ_α are random functions with a Gaussian distribution, $P(\xi_\alpha, \xi_\alpha^*) = \exp[-D_\alpha^{-1} \int dx \xi_\alpha(x) \xi_\alpha(x)^*]$, we can compute $\overline{Z^n}$, and arrive at

$$\begin{aligned} \overline{Z^n} &= \int \prod_{a=1}^n D\phi_f^a D\phi_b^a e^{-\sum_{a=1}^n S_0[\phi_f^a, \phi_b^a]/\hbar} \overline{e^{-\sum_{a=1}^n S_{\text{dis}}[\phi_f^a, \phi_b^a]/\hbar}} \\ &= \int \prod_{a=1}^n D\phi_f^a D\phi_b^a e^{-\sum_{a=1}^n S_0[\phi_f^a, \phi_b^a]} \exp \left[\sum_{\alpha=f,b} D_\alpha \rho_\alpha^2 \right. \\ &\quad \left. \times \sum_{a,b=1}^n \int dx d\tau d\tau' e^{i2\phi_\alpha^a(x,\tau)} e^{-i2\phi_\alpha^b(x,\tau')} \right] \\ &= \int \prod_{a=1}^n D\phi_f^a D\phi_b^a e^{-S_{\text{rep}}}, \end{aligned} \quad (\text{B4})$$

with the *replicated* action, $S_{\text{rep}} = S_0^{\text{rep}} + S_{\text{dis}}^{\text{rep}}$ defined through Eqs. (3.16) and (3.17).

To perform the RG calculation we introduce a UV cutoff Λ on the momenta only, and write the fields ϕ_f, ϕ_b as well ϕ_+ and ϕ_- as

$$\phi_\alpha(x, \tau) = \frac{1}{\beta L} \sum_{\substack{q, \omega_n \\ |q| < \Lambda}} \phi_\alpha(q, \omega_n) e^{iqx - i\omega_n \tau}. \quad (\text{B5})$$

Next, we introduce the slow and fast fields,

$$\phi_\alpha^<(x, \tau) = \frac{1}{\beta L} \sum_{\substack{q, \omega_n \\ |q| < \Lambda'}} \phi_\alpha(q, \omega_n) e^{iqx - i\omega_n \tau}, \quad (\text{B6})$$

$$\phi_\alpha^>(x, \tau) = \frac{1}{\beta L} \sum_{\substack{q, \omega_n \\ \Lambda' < |q| < \Lambda}} \phi_\alpha(q, \omega_n) e^{iqx - i\omega_n \tau}, \quad (\text{B7})$$

and integrate out the fast fields to obtain

$$\overline{Z_\Lambda^n} = Z_0^> \int \prod_{a=1}^n D\phi_f^{a,<} D\phi_b^{a,<} e^{-S_0^<} \langle e^{-S_{\text{dis}}^{\text{rep}}} \rangle_>. \quad (\text{B8})$$

Performing then a cumulant expansion to first order in D_f and D_b we get

$$\begin{aligned} \langle e^{-S_{\text{dis}}^{\text{rep}}} \rangle &\simeq \exp \left[\sum_{\alpha=f,b} D_\alpha \rho_\alpha^2 \sum_{a=1}^n \int dx d\tau d\tau' e^{i2\phi_\alpha^{a,<}(x,\tau)} e^{-i2\phi_\alpha^{a,<}(x,\tau')} \langle e^{i2\phi_\alpha^{a,>}(x,\tau)} e^{-i2\phi_\alpha^{a,>}(x,\tau')} \rangle \right] \\ &= \exp \left[\sum_{\alpha=f,b} D_\alpha \rho_\alpha^2 \sum_{a=1}^n \int dx d\tau d\tau' e^{i2\phi_\alpha^{a,<}(x,\tau)} e^{-i2\phi_\alpha^{a,<}(x,\tau')} \langle e^{i2\phi_\alpha^{a,>}(x,\tau)} \rangle^2 \right. \\ &\quad \left. + \sum_{\alpha=f,b} D_\alpha \rho_\alpha^2 \sum_{a=1}^n \int dx d\tau d\tau' e^{i2\phi_\alpha^{a,<}(x,\tau)} e^{-i2\phi_\alpha^{a,<}(x,\tau')} \left[\langle e^{i2\phi_\alpha^{a,>}(x,\tau)} e^{-i2\phi_\alpha^{a,>}(x,\tau')} \rangle - \langle e^{i2\phi_\alpha^{a,>}(x,\tau)} \rangle^2 \right] \right]. \quad (\text{B9}) \end{aligned}$$

Note that, to first order, every correlation function appearing in (B9) is diagonal in replica space. Let us therefore drop the replica indices for the rest of this section. Furthermore, let us keep only D_f for convenience. Using the normal modes ϕ_+ and ϕ_- , we find that $\langle e^{i2\phi_\alpha^>(x,\tau)} \rangle^2 = (\Lambda'/\Lambda)^{2f_+^2+2f_-^2}$. Therefore the first term in the bracket of Eq. (B9) reads

$$\frac{D_f \rho_f^2}{v_f^2 \Lambda^3} \left(\frac{\Lambda'}{\Lambda} \right)^{2f_+^2+2f_-^2} \Lambda^3 \int dx d(v_f \tau) d(v_f \tau') e^{i2\phi_f^<(x,\tau)} \times e^{-i2\phi_f^<(x,\tau')} \quad (\text{B10})$$

$$= \tilde{D}_f \left(\frac{\Lambda'}{\Lambda} \right)^{2f_+^2+2f_-^2-3} \Lambda^3 \int dx d(v_f \tau) d(v_f \tau') e^{i2\phi_f^<(x,\tau)} \times e^{-i2\phi_f^<(x,\tau')}, \quad (\text{B11})$$

where we have defined the dimensionless coupling $\tilde{D}_f = \frac{D_f \rho_f^2}{v_f^2 \Lambda^3}$. To preserve the low-energy form of the action for a rescaled cutoff, Λ' , one should rescale \tilde{D}_f so that

$$\tilde{D}_f(\Lambda') = \tilde{D}_f(\Lambda) \left(\frac{\Lambda'}{\Lambda} \right)^{2f_+^2+2f_-^2-3}. \quad (\text{B12})$$

Assuming an infinitesimal change of the cutoff, $\Lambda' = \Lambda(1 - dl)$, we obtain Eq. (3.18). Equation (3.19) can be obtained in a similar way.

Let us now take care of the second bracket in Eq. (B9). It contributes mainly when τ and τ' are close, and will essentially renormalize the coefficient of $(\partial_\tau \phi_f)^2$ in the quadratic action. First let us deal with

$$\mathcal{A} = \langle e^{i2\phi_f^>(x,\tau)} e^{-i2\phi_f^>(x,\tau')} \rangle - \langle e^{i2\phi_f^>(x,\tau)} \rangle^2. \quad (\text{B13})$$

We have

$$\begin{aligned} &\langle e^{i2\phi_f^>(x,\tau)} e^{-i2\phi_f^>(x,\tau')} \rangle \\ &= e^{-\sum_{\alpha=\pm} 2f_\alpha^2 \langle (\phi_\alpha(x,\tau) - \phi_\alpha(x,\tau'))^2 \rangle} \\ &= \exp \left[- \sum_{\alpha=\pm} 2f_\alpha^2 \sum_{\substack{q, \omega_n \\ \Lambda' < |q| < \Lambda}} [2 - 2 \cos(\omega_n \bar{\tau})] \frac{\pi v_\alpha}{\omega_n^2 + v_\alpha^2 q^2} \right], \quad (\text{B14}) \end{aligned}$$

with $\bar{\tau} = \tau - \tau'$ and

$$\langle e^{i2\phi_f^>(x,\tau)} \rangle^2 = \exp \left[- \sum_{\alpha=\pm} 4f_\alpha^2 \sum_{\substack{q, \omega_n \\ \Lambda' < |q| < \Lambda}} \frac{\pi v_\alpha}{\omega_n^2 + v_\alpha^2 q^2} \right]. \quad (\text{B15})$$

Then factorizing $\langle e^{i2\phi_f^>(x,\tau)} e^{-i2\phi_f^>(x,\tau')} \rangle$ in \mathcal{A} and using the fact that $\Lambda' = \Lambda(1 - dl)$, an expansion to first order in dl leads to

$$\mathcal{A} = \langle e^{i2\phi_f^>(x,\tau)} e^{-i2\phi_f^>(x,\tau')} \rangle - \sum_{\alpha=\pm} 2f_\alpha^2 e^{-v_\alpha |\bar{\tau}| \Lambda} dl. \quad (\text{B16})$$

We are left with

$$\begin{aligned} \mathcal{B} &= D_\alpha \rho_\alpha^2 \int dx d\tau d\tau' e^{i2\phi_f^<(x,\tau)} e^{-i2\phi_f^<(x,\tau')} \mathcal{A} \\ &= D_\alpha \rho_\alpha^2 \int dx d\tau d\tau' : e^{i2\phi_f^<(x,\tau)} e^{-i2\phi_f^<(x,\tau')} \\ &\quad : e^{-\sum_{\alpha=\pm} 2f_\alpha^2 \int_0^\Lambda dq (1 - e^{-v_\alpha |\bar{\tau}| q}) / q} \sum_{\alpha=\pm} 2f_\alpha^2 e^{-v_\alpha |\bar{\tau}| \Lambda} dl. \quad (\text{B17}) \end{aligned}$$

$:\dots:$ stands for normal ordering. The function $\mathcal{G}(\bar{\tau}) = \exp[-\sum_{\alpha=\pm} 2f_\alpha^2 \int_0^\Lambda dq (1 - e^{-v_\alpha |\bar{\tau}| q}) / q]$ is obtained after taking the normal order and combining the extra factor $\langle e^{i2\phi_f^<(x,\tau)} e^{-i2\phi_f^<(x,\tau')} \rangle$ with \mathcal{A} . Finally we expand the exponential in powers of $\bar{\tau}$:

$$\begin{aligned} \mathcal{B} &\simeq -dl D_\alpha \rho_\alpha^2 \left[\int dx dT (\partial_T \phi_f)^2 \right] \int d\bar{\tau} \bar{\tau}^2 \mathcal{G}(\bar{\tau}) \\ &\quad \times \sum_{\alpha=\pm} 4f_\alpha^2 e^{-v_\alpha |\bar{\tau}| \Lambda}. \quad (\text{B18}) \end{aligned}$$

$\mathcal{G}(\bar{\tau})$ is easily evaluated to be

$$\mathcal{G}(\bar{\tau}) = \prod_{\alpha=\pm} (v_\alpha \Lambda |\bar{\tau}|)^{-2f_\alpha^2} e^{-2f_\alpha^2 (\gamma + \Gamma(0, v_\alpha \Lambda |\bar{\tau}|))}, \quad (\text{B19})$$

with γ Euler's constant and $\Gamma(0, z)$ the incomplete Gamma function. In the end we find that \mathcal{B} can be cast into

$$\begin{aligned} \mathcal{B} &\simeq -dl \tilde{D}_f \left[f_+^2 \mathcal{C}_+ \frac{v_f^2}{v_+^3} \left(\frac{v_+}{v_-} \right)^{2f_+^2} + f_-^2 \mathcal{C}_- \frac{v_f^2}{v_-^3} \left(\frac{v_-}{v_+} \right)^{2f_-^2} \right] \\ &\quad \times \left[\int dx dT (\partial_T \phi_f)^2 \right]. \quad (\text{B20}) \end{aligned}$$

Here we have defined $C_{\pm}(K_b, K_f, v_f/v_b)$ as

$$\begin{aligned} C_+ &= 8 \int_0^\infty dz z^{2-X_f} e^{-2\gamma X_f} e^{-2f_+^2 \Gamma(0,z) - 2f_-^2 \Gamma(0, \frac{v_-}{v_+} z)}, \\ C_- &= 8 \int_0^\infty dz z^{2-X_f} e^{-2\gamma X_f} e^{-2f_+^2 \Gamma(0, \frac{v_+}{v_-} z) - 2f_-^2 \Gamma(0,z)}. \end{aligned} \quad (\text{B21})$$

Both v_f and K_f are renormalized by this term, and we find for the flow equations,

$$\frac{dK_f}{dl} = -\frac{K_f^2}{2} \tilde{D}_f \left[f_+^2 C_+ \frac{v_f^3}{v_+^3} \left(\frac{v_+}{v_-} \right)^{2f_+^2} + f_-^2 C_- \frac{v_f^3}{v_-^3} \left(\frac{v_-}{v_+} \right)^{2f_-^2} \right], \quad (\text{B22})$$

$$\frac{dv_f}{dl} = -\frac{K_f^2}{2} v_f \tilde{D}_f \left[f_+^2 C_+ \frac{v_f^3}{v_+^3} \left(\frac{v_+}{v_-} \right)^{2f_+^2} + f_-^2 C_- \frac{v_f^3}{v_-^3} \left(\frac{v_-}{v_+} \right)^{2f_-^2} \right]. \quad (\text{B23})$$

These flow equations describe the phase transition for small but finite values of \tilde{D}_f and \tilde{D}_b .

APPENDIX C: SELF-CONSISTENT EQUATIONS FOR THE RSB SOLUTIONS

We start from the replicated action. The idea of the Gaussian variational method is to replace the complicated action S by its best Gaussian approximation S_G :

$$S_G = \frac{1}{2} \frac{1}{\beta L} \sum_{q, i\omega_n} \phi_\alpha^a(q, i\omega_n) (G^{-1})_{\alpha\beta}^{ab}(q, i\omega_n) \phi_\beta^b(-q, -i\omega_n).$$

The propagator G is a $2n \times 2n$ matrix with the following structure:

$$G^{-1} = \begin{pmatrix} [G^{-1}]_{ff}^{ab} & [G^{-1}]_{fb}^{ab} \\ [G^{-1}]_{bf}^{ab} & [G^{-1}]_{bb}^{ab} \end{pmatrix}, \quad (\text{C1})$$

where $[G^{-1}]_{\alpha\beta}$, $\alpha, \beta = f, b$ is consequently an $n \times n$ matrix. Using the well-known inequality, $F \leq F_{\text{var}}[G] \equiv F_G + \frac{1}{\beta} \langle S - S_G \rangle_G$, we can obtain an estimate for F by minimizing the variational free energy F_{var} with respect to G . Here $F_G = -\frac{1}{\beta} \ln[\text{Tr} e^{-S_G}]$ is the free energy of the Gaussian theory. The three terms, F_G , $\langle S \rangle_G$, and $\langle S_{\text{dis}} \rangle_G$ can be easily computed to obtain

$$\begin{aligned} F_{\text{var}} &= -\frac{1}{2\beta} \sum_{q, i\omega_n} \text{Tr} \ln[G(q, i\omega_n)] \\ &+ \frac{1}{2} \sum_{\alpha, \beta} \sum_{q, i\omega_n} (G_0^{-1})_{\alpha\beta}(q, i\omega_n) \text{Tr}[G_{\alpha\beta}(q, i\omega_n)] \\ &+ \frac{1}{2} \sum_{a, b} L \int d\tau (V_F[F^{ab}(\tau)] + V_B[B^{ab}(\tau)]). \end{aligned} \quad (\text{C2})$$

Here we have defined the two functions, V_F and V_B , so that $V_F(x) = -2\rho_f^2 D_f e^{-2x}$ and $V_B(x) = -2\rho_b^2 D_b e^{-2x}$, and introduced

$$F^{ab}(\tau) \equiv G_{ff}^{aa}(0, 0) + G_{ff}^{bb}(0, 0) - 2G_{ff}^{ab}(0, \tau), \quad (\text{C3})$$

$$B^{ab}(\tau) \equiv G_{bb}^{aa}(0, 0) + G_{bb}^{bb}(0, 0) - 2G_{bb}^{ab}(0, \tau). \quad (\text{C4})$$

Notice that only the replica-diagonal elements, $F^{aa}(\tau)$ and $F^{bb}(\tau)$, turn out to be time dependent, and the

replica off-diagonal elements, representing disorder-generated correlations between replicas are just constants in time. We now look for the saddle-point equations by differentiating F_{var} with respect to G , and requiring $\delta F_{\text{var}} = 0$. This yields, for $a \neq b$,

$$\begin{aligned} (G^{-1})_{ff}^{ab}(q, i\omega_n) &= -2\beta \delta_{n,0} V'_F(F^{ab}) \\ (G^{-1})_{bb}^{ab}(q, i\omega_n) &= -2\beta \delta_{n,0} V'_B(B^{ab}) \end{aligned} \quad (\text{C5})$$

with

$$\begin{aligned} F^{ab} &= \frac{1}{\beta L} \sum_{q, i\omega_n} [G_{ff}^{aa}(q, i\omega_n) + G_{ff}^{bb}(q, i\omega_n)] \\ &- \frac{2}{\beta L} \sum_q G_{ff}^{ab}(q, \omega_n = 0) \\ B^{ab} &= \frac{1}{\beta L} \sum_{q, i\omega_n} [G_{bb}^{aa}(q, i\omega_n) + G_{bb}^{bb}(q, i\omega_n)] \\ &- \frac{2}{\beta L} \sum_q G_{bb}^{ab}(q, \omega_n = 0) \end{aligned} \quad (\text{C6})$$

and

$$\begin{aligned} (G^{-1})_{ff}^{aa}(q, i\omega_n) &= (G_0^{-1})_{ff}(q, i\omega_n) \\ &+ 2 \int_0^\beta d\tau (1 - \cos[\omega_n \tau]) V'_F(F^{aa}(\tau)) \\ &+ 2 \int_0^\beta d\tau \sum_{b \neq a} V'_F(F^{ab}), \end{aligned} \quad (\text{C7})$$

$$\begin{aligned} (G^{-1})_{bb}^{aa}(q, i\omega_n) &= (G_0^{-1})_{bb}(q, i\omega_n) \\ &+ 2 \int_0^\beta d\tau (1 - \cos[\omega_n \tau]) V'_B(B^{aa}(\tau)) \\ &+ 2 \int_0^\beta d\tau \sum_{b \neq a} V'_B(B^{ab}). \end{aligned} \quad (\text{C8})$$

We remark here that the matrix elements that mix species are unaffected by disorder:

$$(G^{-1})_{fb}^{ab}(q, i\omega_n) = (G^{-1})_{bf}^{ab}(q, i\omega_n) = (G_0^{-1})_{BF}(q, i\omega_n) \delta_{a,b}. \quad (\text{C9})$$

We now take the limit $n \rightarrow 0$ and introduce Parisi's parametrization for 0×0 matrices [65]. Let A be a matrix in replica space. Taking $n = 0$, A can be described by a couple $(\tilde{a}, a(u))$ with \tilde{a} corresponding to the diagonal elements of A , and $a(u)$ a function of $u \in [0, 1]$, parametrizing the off-diagonal elements. For multiplication and inversion rules of Parisi matrices, see, for example, Ref. [65].

With the Parisi parametrization, the previous equations read

$$(G^{-1}(u))(q, \omega_n) = -2\beta \delta_{n,0} \begin{pmatrix} V'_F(F(u)) & 0 \\ 0 & V'_B(B(u)) \end{pmatrix}, \quad (\text{C10})$$

and

$$\tilde{G}_{\alpha\beta}^{-1}(q, \omega_n) = (G_0^{-1})_{\alpha\beta}(q, \omega_n) - \delta_{\alpha\beta} \Pi_\alpha(q, \omega_n), \quad (\text{C11})$$

with the fermionic “self-energy” defined as

$$\begin{aligned} \Pi_f(q, \omega_n) = & -2 \int_0^\beta d\tau (1 - \cos[\omega_n \tau]) V'_F(\tilde{F}(\tau)) \\ & + 2\beta \int_0^1 du V'_F(F(u)), \end{aligned} \quad (\text{C12})$$

and the bosonic self-energy given by a similar expression. The replica-diagonal and off-diagonal parts of F^{ab} then read

$$\begin{aligned} \tilde{F}(\tau) & \equiv 2[\tilde{G}_{ff}(0,0) - \tilde{G}_{ff}(0,\tau)], \\ F(u) & = \frac{2}{\beta L} \sum_{q, i\omega_n} [\tilde{G}_{ff}(q, i\omega_n) - \delta_{\omega_n, 0} \tilde{G}_{ff}(q, u)], \end{aligned}$$

and similar expressions hold for the functions $B(u)$ and $\tilde{B}(\tau)$.

The connected Green’s function, more precisely its inverse, $(G^{-1})_{\alpha\beta}^c \equiv \sum_b (G^{-1})_{\alpha\beta}^{ab}$, was already defined in the main text. Let us finally express this in terms of the Parisi parametrization,

$$(G^{-1})_{\alpha\beta}^c = \tilde{G}_{\alpha\beta}^{-1} - \int_0^1 du G_{\alpha\beta}^{-1}(u). \quad (\text{C13})$$

The integral equations above need be solved self-consistently. However, as we shall see, they do not have a unique solution. Therefore, we need to supplement the above set of integral equations by yet another condition, which shall be the marginality condition of the replicon mode, discussed later [66]. Similar to other quantum glass phases, this condition turns out to yield physically meaningful solutions in all phases [73].

To obtain the self-consistency equations for σ_f and I_F, I_B , one needs to invert the matrix $(G^{-1})_{\alpha\beta}$. This can be carried out using Parisi’s multiplication and inversion formulas [65], and we find

$$F = \frac{2}{\beta L} \sum_{q, i\omega_n} \frac{\pi K_f}{v_f} \frac{\frac{\omega_n^2}{v_b^2} + q^2 + \hat{I}_b(\omega_n)}{(\frac{\omega_n^2}{v_b^2} + q^2 + \hat{I}_b(\omega_n))(\frac{\omega_n^2}{v_f^2} + q^2 + \hat{I}_f(\omega_n) + \hat{\Sigma}_f) - g^2 q^4}, \quad (\text{C18})$$

$$\tilde{F}(\tau) = \frac{2}{\beta L} \sum_{q, i\omega_n} \frac{\pi K_f}{v_f} (1 - \cos[\omega_n \tau]) \frac{\frac{\omega_n^2}{v_b^2} + q^2 + \hat{I}_b(\omega_n)}{(\frac{\omega_n^2}{v_b^2} + q^2 + \hat{I}_b(\omega_n))(\frac{\omega_n^2}{v_f^2} + q^2 + \hat{I}_f(\omega_n) + \hat{\Sigma}_f) - g^2 q^4}, \quad (\text{C19})$$

$$\tilde{B}(\tau) = \frac{2}{\beta L} \sum_{q, i\omega_n} \frac{\pi K_b}{v_b} (1 - \cos[\omega_n \tau]) \frac{\frac{\omega_n^2}{v_f^2} + q^2 + \hat{I}_f(\omega_n) + \hat{\Sigma}_f}{(\frac{\omega_n^2}{v_b^2} + q^2 + \hat{I}_b(\omega_n))(\frac{\omega_n^2}{v_f^2} + q^2 + \hat{I}_f(\omega_n) + \hat{\Sigma}_f) - g^2 q^4}. \quad (\text{C20})$$

Here we have introduced $\hat{I}_f = \frac{\pi K_f}{v_f} I_F$, $\hat{\Sigma}_F = \frac{\pi K_f}{v_f} \Sigma_F$, and used similar notations for bosons. One can check that B is indeed infinity. The self-consistent set of equations can be cast into

$$\begin{aligned} \hat{\Sigma}_F & = 2\beta \frac{\pi K_f}{v_f} u_f V'_F(F), \quad \hat{I}_f(\omega_n) = 2 \frac{\pi K_f}{v_f} \int_0^\beta d\tau (1 - \cos[\omega_n \tau]) (V'_F(\tilde{F}(\tau)) - V'_F(F)), \\ \hat{I}_b(\omega_n) & = 2 \frac{\pi K_b}{v_b} \int_0^\beta d\tau (1 - \cos[\omega_n \tau]) V'_B(\tilde{B}(\tau)). \end{aligned} \quad (\text{C21})$$

However, these equations do not determine the break point u_f . The value of the latter can be determined using the so-called marginality condition on the replicon mode [66]. We expand the variational free energy to second order, around the saddle point.

1. Level-1 RSB

To describe the phase with localized fermions and superfluid bosons, we assume a level-1 replica symmetry breaking in the fermionic sector, while the bosonic sector remains replica symmetric. To simplify notations, we introduce the self-energy,

$$\sigma_f(u) = 2\beta V'_F(F(u)). \quad (\text{C14})$$

Level-1 RSB implies that there exists a value $0 < u_f < 1$ such that $\sigma_f(u < u_f) = 0$ and $\sigma_f(u > u_f) = \sigma_f$, or equivalently $F(u < u_f) = \infty$ and $F(u > u_f) = F$. The corresponding bosonic self-energy $\sigma_b(u)$ is identically zero in this phase. Then the matrix elements of $(G^{-1})_{\alpha\beta}^c$ read

$$\begin{aligned} (G^{-1})_{ff}^c & = (G_0^{-1})_{ff}(i\omega_n, q) + I_F(\omega_n) + \Sigma_F(1 - \delta_{n,0}), \\ (G^{-1})_{bb}^c & = (G_0^{-1})_{bb}(i\omega_n, q) + I_B(\omega_n), \\ (G^{-1})_{fb}^c & = (G^{-1})_{BF}^c = (G_0^{-1})_{fb}(i\omega_n, q), \end{aligned} \quad (\text{C15})$$

with the functions $I_{b \text{ or } f}(\omega_n)$ defined as

$$I_B(\omega_n) = 2 \int_0^\beta d\tau (1 - \cos[\omega_n \tau]) V'_B(\tilde{B}(\tau)), \quad (\text{C16})$$

$$I_F(\omega_n) = 2 \int_0^\beta d\tau (1 - \cos[\omega_n \tau]) (V'_F(\tilde{F}(\tau)) - V'_F(F)), \quad (\text{C17})$$

and the “mass” Σ_F given by

$$\Sigma_f = 2\beta u_f V'_F(F).$$

To do so, we write $G(q, i\omega_n) = G^{(0)}(q, i\omega_n) + g(q)$, where $G^{(0)}$ denotes the saddle-point solution, and $G^{(0)}$ [as well as $g(q)$] is a Parisi matrix with matrix elements,

$$[G^{(0)}]^{-1}(i\omega_n = 0, q) = \begin{pmatrix} (\tilde{\Gamma}_f, \Gamma_f(u)) & (\tilde{\Gamma}_{fb}, 0) \\ (\tilde{\Gamma}_{fb}, 0) & (\tilde{\Gamma}_b, 0) \end{pmatrix}. \quad (\text{C22})$$

In a similar way,

$$g(q) = \begin{pmatrix} (0, g_f(q, u)) & (0, g_{fb}(q, u)) \\ (0, g_{BF}(q, u)) & (0, g_b(q, u)) \end{pmatrix}. \quad (\text{C23})$$

Note that since the RSB only happens for the $\omega_n = 0$ mode, we only need to perturb that particular mode. We then expand F_{var} up to second order in $g(q)$, yielding

$$\delta^2 F_{\text{var}} = \frac{1}{4\beta} \sum_q \text{Tr}[[G^{(0)}(q)]^{-1} g(q)]^2 - n \frac{1}{\beta L} \int_0^1 du \sum_{q, q'} [g_f(q, u) g_f(q', u) V_F''[F(u)] + g_b(q, u) g_b(q', u) V_B''[B(u)]].$$

This can be written as $\delta^2 F_{\text{var}} = \sum_{q, q'} \int_0^1 du \int_0^1 du' [g]^T(q, u) M(q, q', u, u') [g](q, u)$, with $[g]^T = [g_f, g_b, g_{fb}, g_{BF}]$. The stability matrix M greatly simplifies if $g(q, u)$ is a so-called replicon mode, for which $\int_0^{u_f} du g(u) = 0$ and $\int_{u_f}^1 du g(u) = 0$. In this case we find a symmetrical stability matrix, which, after introducing the notation $\langle \Gamma_f \rangle = \int_0^1 du \Gamma_f(u)$, takes the form,

$$M^{(u < u_f)}(q, q', u, u') = -\frac{1}{4\beta} \delta(u - u') \begin{pmatrix} (\tilde{\Gamma}_f - \langle \Gamma_f \rangle)^2 \delta_{qq'} & \tilde{\Gamma}_{fb}^2 \delta_{qq'} & (\tilde{\Gamma}_f - \langle \Gamma_f \rangle) \tilde{\Gamma}_{fb} \delta_{qq'} & (\tilde{\Gamma}_f - \langle \Gamma_f \rangle) \tilde{\Gamma}_{fb} \delta_{qq'} \\ \dots & \tilde{\Gamma}_b^2 \delta_{qq'} & \tilde{\Gamma}_b \tilde{\Gamma}_{fb} \delta_{qq'} & \tilde{\Gamma}_b \tilde{\Gamma}_{fb} \delta_{qq'} \\ \dots & \dots & \tilde{\Gamma}_{fb}^2 \delta_{qq'} & (\tilde{\Gamma}_f - \langle \Gamma_f \rangle) \tilde{\Gamma}_b \delta_{qq'} \\ \dots & \dots & \dots & \tilde{\Gamma}_{fb}^2 \delta_{qq'} \end{pmatrix}, \quad (\text{C24})$$

$$M^{(u > u_f)}(q, q', u, u') = -\frac{1}{4\beta} \delta(u - u') \begin{pmatrix} (\tilde{\Gamma}_f - \Gamma_f)^2 \delta_{qq'} + \frac{4}{L} V_F''[F] & \tilde{\Gamma}_{fb}^2 \delta_{qq'} & (\tilde{\Gamma}_f - \Gamma_f) \tilde{\Gamma}_{fb} \delta_{qq'} & (\tilde{\Gamma}_f - \Gamma_f) \tilde{\Gamma}_{fb} \delta_{qq'} \\ \dots & \tilde{\Gamma}_b^2 \delta_{qq'} & \tilde{\Gamma}_b \tilde{\Gamma}_{fb} \delta_{qq'} & \tilde{\Gamma}_b \tilde{\Gamma}_{fb} \delta_{qq'} \\ \dots & \dots & \tilde{\Gamma}_{fb}^2 \delta_{qq'} & (\tilde{\Gamma}_f - \Gamma_f) \tilde{\Gamma}_b \delta_{qq'} \\ \dots & \dots & \dots & \tilde{\Gamma}_{fb}^2 \delta_{qq'} \end{pmatrix}, \quad (\text{C25})$$

and the marginality condition is $\sum_{q'} M(q, q', u, u) [g(q', u)] = 0$. For $u < u_f$ this is trivially satisfied, while for $u > u_f$ it leads to the following condition:

$$-\frac{4}{L} \left(\frac{\pi K_f}{v_f} \right)^2 V_F''(F) \sum_q \frac{1}{[q^2(1-g^2) + \hat{\Sigma}_f]^2} = 1, \quad (\text{C26})$$

which becomes for $L \rightarrow \infty$,

$$\hat{\Sigma}_f^{3/2} = - \left(\frac{\pi K_f}{v_f} \right)^2 \frac{V_F''(F)}{\sqrt{1-g^2}}, \quad (\text{C27})$$

and closes the system of self-consistent equations.

2. Level-2 RSB

To describe the fully localized phase, we assume replica symmetry breaking in both the fermionic and the bosonic sectors. It turns out that one cannot reach a self-consistent set of equations with a level-1 RSB in each sector, however, it is sufficient to assume a level-2 RSB in one of the sectors, and a level-1 RSB in the other one. We proceed along the same path as before, excepting that now there are two break points, u_1 and u_2 , such that

$$\begin{aligned} \sigma_f(u < u_1) &= 0, & \sigma_f(u_1 < u < u_2) &= \sigma_f^{(1)} \equiv 2\beta V_F'[F^{(1)}], & \sigma_f(u_2 < u < 1) &= \sigma_f^{(2)} \equiv 2\beta V_F'[F^{(2)}], \\ \sigma_b(u < u_2) &= 0, & \sigma_b(u_2 < u < 1) &= \sigma_b^{(2)} \equiv 2\beta V_B'[B^{(2)}]. \end{aligned} \quad (\text{C28})$$

Now we have

$$\begin{aligned} \hat{I}_f(\omega_n) &= 2 \frac{\pi K_f}{v_f} \int_0^\beta d\tau (1 - \cos[\omega_n \tau]) (V_F'(\tilde{F}(\tau)) - V_F'[F^{(2)}]), \\ \hat{I}_b(\omega_n) &= 2 \frac{\pi K_b}{v_b} \int_0^\beta d\tau (1 - \cos[\omega_n \tau]) (V_B'(\tilde{B}(\tau)) - V_B'[B^{(2)}]), \end{aligned}$$

$$\begin{aligned}\hat{\Sigma}_F &= 2\beta \frac{\pi K_f}{v_f} [u_1 V'_F[F^{(1)}] + u_2 (V'_F[F^{(2)}] - V'_F[F^{(1)}])], \\ \hat{\Sigma}_B &= 2\beta \frac{\pi K_b}{v_b} u_2 V'_B[B^{(2)}].\end{aligned}\quad (\text{C29})$$

The inversion of the propagator leads to

$$B^{(2)} = \frac{2}{\beta L} \sum_{q, i\omega_n} \frac{\pi K_b}{v_b} \frac{\frac{\omega_n^2}{v_f^2} + q^2 + \hat{I}_f(\omega_n) + \hat{\Sigma}_F}{\left(\frac{\omega_n^2}{v_b^2} + q^2 + \hat{I}_b(\omega_n)\right) \left(\frac{\omega_n^2}{v_f^2} + q^2 + \hat{I}_f(\omega_n) + \hat{\Sigma}_f\right) - g^2 q^4}, \quad (\text{C30})$$

$$F^{(2)} = \frac{2}{\beta L} \sum_{q, i\omega_n} \frac{\pi K_f}{v_f} \frac{\frac{\omega_n^2}{v_b^2} + q^2 + \hat{I}_b(\omega_n) + \hat{\Sigma}_B}{\left(\frac{\omega_n^2}{v_b^2} + q^2 + \hat{I}_b(\omega_n)\right) \left(\frac{\omega_n^2}{v_f^2} + q^2 + \hat{I}_f(\omega_n) + \hat{\Sigma}_f\right) - g^2 q^4}, \quad (\text{C31})$$

$$F^{(2)} - F^{(1)} = -2\pi \frac{K_f}{v_f} \frac{1}{u_2 \beta L} \sum_q \frac{(q^2 + \hat{\Sigma}_B) \Delta \hat{\Sigma}_F^{(2)} + g^2 q^2 \Sigma_B}{((q^2 + \hat{\Sigma}_B)(q^2 + \hat{\Sigma}_F) - g^2 q^4)(q^2(1 - g^2) + \hat{\Sigma}_F^{(1)}),} \quad (\text{C32})$$

where we have introduced $\Delta \hat{\Sigma}_F^{(2)} = 2\beta \frac{\pi K_f}{v_f} u_2 (V'_F[F^{(2)}] - V'_F[F^{(1)}])$ and $\hat{\Sigma}_F^{(1)} = 2\beta \frac{\pi K_f}{v_f} u_1 V'_F[F^{(1)}]$ —so that $\hat{\Sigma}_F = \hat{\Sigma}_F^{(1)} + \Delta \hat{\Sigma}_F^{(2)}$. As in the previous section we need two more equations to find u_1 and u_2 and close the system. We also look for the marginality condition of the replicon mode, which we define as a mode satisfying $\int_{u_1}^{u_2} du g(u) \equiv 0$ and $\int_{u_2}^1 du g(u) \equiv 0$. Now the stability matrix reads

(1) for $u < u_1$,

$$M(q, q', u, u') = -\frac{1}{4\beta} \delta(u - u') \begin{pmatrix} (\tilde{\Gamma}_f - \langle \Gamma_f \rangle)^2 \delta_{qq'} & \tilde{\Gamma}_{fb}^2 \delta_{qq'} & (\tilde{\Gamma}_f - \langle \Gamma_f \rangle) \tilde{\Gamma}_{fb} \delta_{qq'} & (\tilde{\Gamma}_f - \langle \Gamma_f \rangle) \tilde{\Gamma}_{fb} \delta_{qq'} \\ \cdots & (\tilde{\Gamma}_b - \langle \Gamma_b \rangle)^2 \delta_{qq'} & (\tilde{\Gamma}_b - \langle \Gamma_b \rangle) \tilde{\Gamma}_{fb} \delta_{qq'} & (\tilde{\Gamma}_b - \langle \Gamma_b \rangle) \tilde{\Gamma}_{fb} \delta_{qq'} \\ \cdots & \cdots & \tilde{\Gamma}_{fb}^2 \delta_{qq'} & (\tilde{\Gamma}_f - \langle \Gamma_f \rangle) (\tilde{\Gamma}_b - \langle \Gamma_b \rangle) \delta_{qq'} \\ \cdots & \cdots & \cdots & \tilde{\Gamma}_{fb}^2 \delta_{qq'} \end{pmatrix},$$

(2) for $u_1 < u < u_2$,

$$\begin{pmatrix} (\tilde{\Gamma}_f - \Gamma_f^{(2)} + \Delta \Gamma_f^{(2)})^2 \delta_{qq'} + \frac{4}{L} V''_F[F^{(1)}] & \tilde{\Gamma}_{fb}^2 \delta_{qq'} & (\tilde{\Gamma}_f - \Gamma_f^{(2)} + \Delta \Gamma_f^{(2)}) \tilde{\Gamma}_{fb} \delta_{qq'} & (\tilde{\Gamma}_f - \Gamma_f^{(2)} + \Delta \Gamma_f^{(2)}) \tilde{\Gamma}_{fb} \delta_{qq'} \\ \cdots & (\tilde{\Gamma}_b - \langle \Gamma_b \rangle)^2 \delta_{qq'} & (\tilde{\Gamma}_b - \langle \Gamma_b \rangle) \tilde{\Gamma}_{fb} \delta_{qq'} & (\tilde{\Gamma}_b - \langle \Gamma_b \rangle) \tilde{\Gamma}_{fb} \delta_{qq'} \\ \cdots & \cdots & \tilde{\Gamma}_{fb}^2 \delta_{qq'} & (\tilde{\Gamma}_f - \Gamma_f^{(2)} + \Delta \Gamma_f^{(2)}) (\tilde{\Gamma}_b - \langle \Gamma_b \rangle) \delta_{qq'} \\ \cdots & \cdots & \cdots & \tilde{\Gamma}_{fb}^2 \delta_{qq'} \end{pmatrix},$$

(3) for $u_2 < u < 1$,

$$\begin{pmatrix} (\tilde{\Gamma}_f - \Gamma_f^{(2)})^2 \delta_{qq'} + \frac{4}{L} V''_F[F^{(2)}] & \tilde{\Gamma}_{fb}^2 \delta_{qq'} & (\tilde{\Gamma}_f - \Gamma_f^{(2)}) \tilde{\Gamma}_{fb} \delta_{qq'} & (\tilde{\Gamma}_f - \Gamma_f^{(2)}) \tilde{\Gamma}_{fb} \delta_{qq'} \\ \cdots & (\tilde{\Gamma}_b - \Gamma_b^{(2)})^2 \delta_{qq'} + \frac{4}{L} V''_B[B^{(2)}] & (\tilde{\Gamma}_b - \Gamma_b^{(2)}) \tilde{\Gamma}_{fb} \delta_{qq'} & (\tilde{\Gamma}_b - \Gamma_b^{(2)}) \tilde{\Gamma}_{fb} \delta_{qq'} \\ \cdots & \cdots & \tilde{\Gamma}_{fb}^2 \delta_{qq'} & (\tilde{\Gamma}_f - \Gamma_f^{(2)}) (\tilde{\Gamma}_b - \Gamma_b^{(2)}) \delta_{qq'} \\ \cdots & \cdots & \cdots & \tilde{\Gamma}_{fb}^2 \delta_{qq'} \end{pmatrix}.$$

As before, on the first interval the marginality condition gives a trivial condition. On the second interval it gives

$$-\frac{4}{L} \left(\frac{\pi K_f}{v_f} \right)^2 V''_F[F^{(1)}] \sum_q \frac{1}{[q^2(1 - g^2) + \hat{\Sigma}_F^{(1)}]^2} = 1, \quad (\text{C33})$$

and on the third we obtain

$$\left[4 \left(\frac{\pi K_f}{v_f} \right)^2 V''_F[F^{(2)}] A_{ff} + 1 \right] \left[4 \left(\frac{\pi K_f}{v_f} \right)^2 V''_B[B^{(2)}] A_{bb} + 1 \right] = 16 \left(\frac{\pi K_f}{v_f} \right)^2 \left(\frac{\pi K_b}{v_b} \right)^2 V''_F[F^{(2)}] V''_B[B^{(2)}] A_{fb}^2.$$

with

$$A_{ff} = \frac{1}{L} \sum_q \frac{(q^2 + \hat{\Sigma}_b)^2}{[(q^2 + \hat{\Sigma}_f)(q^2 + \hat{\Sigma}_b) - g^2 q^4]^2},$$

$$A_{bb} = \frac{1}{L} \sum_q \frac{(q^2 + \hat{\Sigma}_f)^2}{[(q^2 + \hat{\Sigma}_f)(q^2 + \hat{\Sigma}_b) - g^2 q^4]^2},$$

$$A_{fb} = \frac{1}{L} \sum_q \frac{\pi^2 g^2 q^4}{[(q^2 + \hat{\Sigma}_f)(q^2 + \hat{\Sigma}_b) - g^2 q^4]^2}.$$

These conditions effectively close the system of self-consistent equations.

APPENDIX D: COMPUTATION OF THE STRUCTURE FACTOR FROM THE VARIATIONAL SOLUTION

As stated in the main text—see Eq. (4.18)—the structure factor for fermions is given by

$$S_f(q, \omega) = -\text{Im}[q^2 \tilde{G}_{ff}(q, i\omega_n \rightarrow \omega + i\epsilon)], \quad (\text{D1})$$

and we have a similar expression for bosons. Here, $\tilde{G}_{ff(bb)}$ is the replica-diagonal contribution for the fermion (boson) propagator. We recall their expressions in the three phases. In the Luttinger liquid phase,

$$\tilde{G}_{ff}(q, \omega_n) = \frac{\pi K_f}{v_f} \frac{q^2 + b(\omega_n)}{[q^2 + b(\omega_n)][q^2 + f(\omega_n)] - g^2 q^4}, \quad (\text{D2})$$

$$\tilde{G}_{bb}(q, \omega_n) = \frac{\pi K_b}{v_b} \frac{q^2 + b(\omega_n)}{[q^2 + f(\omega_n)][q^2 + f(\omega_n)] - g^2 q^4}. \quad (\text{D3})$$

Remember we have introduced the following general notation:

$$b(\omega_n) = \omega_n^2/v_b^2 + \hat{I}_b(\omega_n) + \hat{\Sigma}_b, \quad (\text{D4})$$

$$f(\omega_n) = \omega_n^2/v_f^2 + \hat{I}_f(\omega_n) + \hat{\Sigma}_f. \quad (\text{D5})$$

In the Luttinger liquid phase $\hat{\Sigma}_f = \hat{\Sigma}_b = 0$. In the phase where fermions are localized and bosons superfluid, the propagators read

$$\tilde{G}_{ff}(q, \omega_n) = \frac{\pi K_f}{v_f} \left(\frac{q^2 + b(\omega_n)}{[q^2 + b(\omega_n)][q^2 + f(\omega_n)] - g^2 q^4} + \delta_{n,0} \frac{1}{1 - g^2} \frac{\sigma_f}{q^2[q^2(1 - g^2) + \hat{\Sigma}_f]} \right), \quad (\text{D6})$$

$$\tilde{G}_{bb}(q, \omega_n) = \frac{\pi K_b}{v_b} \left(\frac{q^2 + f(\omega_n)}{[q^2 + b(\omega_n)][q^2 + f(\omega_n)] - g^2 q^4} + \delta_{n,0} \frac{g^2}{1 - g^2} \frac{\sigma_f}{q^2[q^2(1 - g^2) + \hat{\Sigma}_f]} \right). \quad (\text{D7})$$

Finally we add here the expressions of the propagators in the fully localized phase (for clarity they do not appear in the main text). They are

$$\begin{aligned} \tilde{G}_{ff}(q, \omega_n) &= \frac{\pi K_f}{v_f} \frac{q^2 + b(\omega_n)}{[q^2 + b(\omega_n)][q^2 + f(\omega_n)] - g^2 q^4} \\ &+ \delta_{n,0} \frac{\pi K_f}{v_f} \left[\frac{1}{1 - g^2} \frac{\sigma_f^{(1)}}{q^2[q^2(1 - g^2) + \hat{\Sigma}_f^{(1)}]} \right. \\ &\left. + \frac{(\hat{\Sigma}_b + q^2)\Delta\hat{\sigma}_f^{(2)} + q^2 g^2 \hat{\sigma}_b}{[q^2(1 - g^2) + \hat{\Sigma}_f^{(1)}][(q^2 + \hat{\Sigma}_f)(q^2 + \hat{\Sigma}_b) - g^2 q^4]} \right], \end{aligned} \quad (\text{D8})$$

$$\begin{aligned} \tilde{G}_{bb}(q, \omega_n) &= \frac{\pi K_b}{v_b} \frac{q^2 + f(\omega_n)}{[q^2 + b(\omega_n)][q^2 + f(\omega_n)] - g^2 q^4} \\ &+ \delta_{n,0} \frac{\pi K_b}{v_b} \frac{\sigma_b^{(2)}}{1 - g^2} \frac{q^2 + \hat{\Sigma}_f}{q^2[(q^2 + \hat{\Sigma}_f)(q^2 + \hat{\Sigma}_b) - g^2 q^4]} \\ &+ \delta_{n,0} \frac{\pi K_b}{v_b} \frac{g^2}{1 - g^2} \left[\frac{\sigma_f^{(1)}}{q^2[q^2(1 - g^2) + \hat{\Sigma}_f^{(1)}]} \right. \\ &\left. + \frac{(\hat{\Sigma}_f + q^2)\hat{\sigma}_b^{(2)} + q^2 \Delta\hat{\sigma}_f^{(2)}}{[q^2(1 - g^2) + \hat{\Sigma}_f^{(1)}][(q^2 + \hat{\Sigma}_f)(q^2 + \hat{\Sigma}_b) - g^2 q^4]} \right]. \end{aligned} \quad (\text{D9})$$

After the analytical continuation, the $\delta_{n,0}$ do not contribute and $\tilde{G}_{ff}(q, \omega_+)$ and $\tilde{G}_{bb}(q, \omega_+)$, with $\omega_+ = \omega + i\epsilon$, are of the general form,

$$\begin{aligned} \tilde{G}_{ff}(q, -i\omega_+) &= \frac{\pi K_f}{v_f} \frac{q^2 + b(-i\omega_+)}{[q^2 + b(-i\omega_+)][q^2 + f(-i\omega_+)] - g^2 q^4}, \end{aligned} \quad (\text{D10})$$

$$\begin{aligned} \tilde{G}_{bb}(q, -i\omega_+) &= \frac{\pi K_b}{v_b} \frac{q^2 + b(-i\omega_+)}{[q^2 + f(-i\omega_+)][q^2 + f(-i\omega_+)] - g^2 q^4}. \end{aligned} \quad (\text{D11})$$

To get a useful form we introduce real and imaginary parts of $\hat{I}_f(-i\omega_+)$ and $\hat{I}_b(-i\omega_+)$ as $\hat{I}_f(-i\omega_+) = \hat{I}'_f(\omega) + i\hat{I}''_f(\omega)$ and $\hat{I}_b(-i\omega_+) = \hat{I}'_b(\omega) + i\hat{I}''_b(\omega)$. Finally we find for the structure factors,

$$S_f(q, \omega) = -\frac{K_f}{\pi v_f} q^2 \frac{\hat{I}''_f(\omega)\mathcal{P}_b(q, \omega)^2 + \hat{I}''_b(\omega)\mathcal{P}_{fb}(q, \omega)}{[\hat{I}''_f(\omega)\mathcal{P}_b(q, \omega) + \hat{I}''_b(\omega)\mathcal{P}_f(q, \omega)]^2 + [\mathcal{P}_{fb}(q, \omega) - \mathcal{P}_f(q, \omega)\mathcal{P}_b(q, \omega)]^2}, \quad (\text{D12})$$

$$S_b(q, \omega) = -\frac{K_b}{\pi v_b} q^2 \frac{\hat{I}''_b(\omega)\mathcal{P}_f(q, \omega)^2 + \hat{I}''_f(\omega)\mathcal{P}_{fb}(q, \omega)}{[\hat{I}''_f(\omega)\mathcal{P}_b(q, \omega) + \hat{I}''_b(\omega)\mathcal{P}_f(q, \omega)]^2 + [\mathcal{P}_{fb}(q, \omega) - \mathcal{P}_f(q, \omega)\mathcal{P}_b(q, \omega)]^2}, \quad (\text{D13})$$

with

$$\mathcal{P}_b(q, \omega) = q^2 + \hat{\Sigma}_b - \frac{\omega^2}{v_b^2} + \hat{I}'_b(\omega), \quad (\text{D14})$$

$$\mathcal{P}_f(q, \omega) = q^2 + \hat{\Sigma}_f - \frac{\omega^2}{v_f^2} + \hat{I}'_f(\omega), \quad (\text{D15})$$

$$\mathcal{P}_{fb}(q, \omega) = \hat{I}''_f(\omega)\hat{I}''_b(\omega) + g^2q^4. \quad (\text{D16})$$

Remember that $\hat{I}'_f, \hat{I}''_f, \hat{I}'_b, \hat{I}''_b, \hat{\Sigma}_f, \hat{\Sigma}_b$ depend on the phase one considers. Although for weak disorder the functions \hat{I}'_f and \hat{I}'_b might alter the dynamics only weakly, probing the dynamics would be a good way to test the effect of different levels of replica symmetry breaking. Note that according to (4.19) and (4.20), the structure factors grow linearly at small frequency in the localized phases.

-
- [1] P. W. Anderson, *Phys. Rev.* **109**, 1492 (1958).
- [2] L. Sanchez-Palencia and M. Lewenstein, *Nature Phys.* **6**, 78 (2010).
- [3] J. Billy, V. Josse, Z. Zuo, A. Bernard, B. Hambrecht, P. Lugan, D. Clément, L. Sanchez-Palencia, P. Bouyer, and A. Aspect, *Nature (London)* **453**, 891 (2008).
- [4] G. Roati, C. D'Errico, L. Fallani, M. Fattori, C. Fort, M. Zaccanti, G. Modugno, M. Modugno, and M. Inguscio, *Nature (London)* **453**, 895 (2008).
- [5] L. Fallani, J. E. Lye, V. Guarrera, C. Fort, and M. Inguscio, *Phys. Rev. Lett.* **98**, 130404 (2007).
- [6] M. White, M. Pasienski, D. McKay, S. Q. Zhou, D. Ceperley, and B. DeMarco, *Phys. Rev. Lett.* **102**, 055301 (2009).
- [7] B. Deissler, M. Zaccanti, G. Roati, C. D'Errico, M. Fattori, M. Modugno, G. Modugno, and M. Inguscio, *Nature Phys.* **6**, 354 (2010).
- [8] M. Robert-de-Saint-Vincent, J.-P. Brantut, B. Allard, T. Plisson, L. Pezzé, L. Sanchez-Palencia, A. Aspect, T. Bourdel, and P. Bouyer, *Phys. Rev. Lett.* **104**, 220602 (2010).
- [9] S. S. Kondov, W. R. McGehee, J. J. Zirbel, and B. DeMarco, *Science* **334**, 66 (2011).
- [10] F. Jendrzejewski, A. Bernard, K. Mueller, P. Cheinet, V. Josse, M. Piraud, L. Pezzé, L. Sanchez-Palencia, A. Aspect, and P. Bouyer, e-print arXiv:1108.0137 (to be published).
- [11] N. F. Mott, *Rev. Mod. Phys.* **40**, 677 (1968).
- [12] D. Basko, I. Aleiner, and B. Altshuler, *Ann. Phys.* **321**, 1126 (2006).
- [13] M. P. A. Fisher, P. B. Weichman, G. Grinstein, and D. S. Fisher, *Phys. Rev. B* **40**, 546 (1989).
- [14] R. T. Scalettar, G. G. Batrouni, and G. T. Zimanyi, *Phys. Rev. Lett.* **66**, 3144 (1991).
- [15] W. Krauth, N. Trivedi, and D. Ceperley, *Phys. Rev. Lett.* **67**, 2307 (1991).
- [16] L. Pollet, N. V. Prokof'ev, B. V. Svistunov, and M. Troyer, *Phys. Rev. Lett.* **103**, 140402 (2009).
- [17] V. Gurarie, L. Pollet, N. V. Prokof'ev, B. V. Svistunov, and M. Troyer, *Phys. Rev. B* **80**, 214519 (2009).
- [18] T. Giamarchi and H. J. Schulz, *Phys. Rev. B* **37**, 325 (1988).
- [19] P. Lugan, D. Clément, P. Bouyer, A. Aspect, M. Lewenstein, and L. Sanchez-Palencia, *Phys. Rev. Lett.* **98**, 170403 (2007).
- [20] L. Sanchez-Palencia, D. Clément, P. Lugan, P. Bouyer, G. V. Shlyapnikov, and A. Aspect, *Phys. Rev. Lett.* **98**, 210401 (2007).
- [21] P. Lugan, D. Clément, P. Bouyer, A. Aspect, and L. Sanchez-Palencia, *Phys. Rev. Lett.* **99**, 180402 (2007).
- [22] P. Lugan, A. Aspect, L. Sanchez-Palencia, D. Delande, B. Grémaud, C. A. Müller, and C. Miniatura, *Phys. Rev. A* **80**, 023605 (2009).
- [23] G. M. Falco, T. Nattermann, and V. L. Pokrovsky, *Phys. Rev. B* **80**, 104515 (2009).
- [24] R. Vosk and E. Altman, *Phys. Rev. B* **85**, 024531 (2012).
- [25] C. Gaul and C. A. Müller, *Phys. Rev. A* **83**, 063629 (2011).
- [26] F. D. M. Haldane, *Phys. Rev. Lett.* **47**, 1840 (1981).
- [27] E. Haller, R. Hart, M. J. Mark, J. G. Danzl, L. Reichsollner, M. Gustavsson, M. Dalmonte, G. Pupillo, and H.-C. Nagerl, *Nature (London)* **466**, 597 (2010).
- [28] H. P. Büchler, G. Blatter, and W. Zwerger, *Phys. Rev. Lett.* **90**, 130401 (2003).
- [29] F. Schreck, L. Khaykovich, K. L. Corwin, G. Ferrari, T. Bourdel, J. Cubizolles, and C. Salomon, *Phys. Rev. Lett.* **87**, 080403 (2001).
- [30] Z. Hadzibabic, C. A. Stan, K. Dieckmann, S. Gupta, M. W. Zwierlein, A. Görlitz, and W. Ketterle, *Phys. Rev. Lett.* **88**, 160401 (2002).
- [31] K. Günter, T. Stöferle, H. Moritz, M. Köhl, and T. Esslinger, *Phys. Rev. Lett.* **96**, 180402 (2006).
- [32] C. Ospelkaus, S. Ospelkaus, K. Sengstock, and K. Bongs, *Phys. Rev. Lett.* **96**, 020401 (2006).
- [33] S. Ospelkaus, C. Ospelkaus, O. Wille, M. Succo, P. Ernst, K. Sengstock, and K. Bongs, *Phys. Rev. Lett.* **96**, 180403 (2006).
- [34] F. Ferlaino, E. de Mirandes, G. Roati, G. Modugno, and M. Inguscio, *Phys. Rev. Lett.* **92**, 140405 (2004).
- [35] T. Best, S. Will, U. Schneider, L. Hackermüller, D. van Oosten, I. Bloch, and D.-S. Lühmann, *Phys. Rev. Lett.* **102**, 030408 (2009).
- [36] S. Sugawa, K. Inaba, S. Taie, R. Yamazaki, M. Yamashita, and Y. Takahashi, *Nat. Phys.* **7**, 642 (2011).
- [37] M. A. Cazalilla and A. F. Ho, *Phys. Rev. Lett.* **91**, 150403 (2003).
- [38] L. Mathey, D.-W. Wang, W. Hofstetter, M. D. Lukin, and E. Demler, *Phys. Rev. Lett.* **93**, 120404 (2004).
- [39] M. Lewenstein, L. Santos, M. A. Baranov, and H. Fehrmann, *Phys. Rev. Lett.* **92**, 050401 (2004).
- [40] A. Imambekov and E. Demler, *Phys. Rev. A* **73**, 021602 (2006).
- [41] A. Imambekov and E. Demler, *Ann. Phys.* **321**, 2390 (2006).
- [42] L. Mathey, *Phys. Rev. B* **75**, 144510 (2007).
- [43] L. Mathey and D.-W. Wang, *Phys. Rev. A* **75**, 013612 (2007).
- [44] G. Refael and E. Demler, *Phys. Rev. B* **77**, 144511 (2008).
- [45] E. Burovski, G. Orso, and T. Jolicoeur, *Phys. Rev. Lett.* **103**, 215301 (2009).
- [46] G. Orso, E. Burovski, and T. Jolicoeur, *Phys. Rev. Lett.* **104**, 065301 (2010).
- [47] E. Orignac, M. Tsuchiizu, and Y. Suzumura, *Phys. Rev. A* **81**, 053626 (2010).
- [48] F. Crépin, G. Záránd, and P. Simon, *Phys. Rev. Lett.* **105**, 115301 (2010).

- [49] G. Roux, E. Burovski, and T. Jolicoeur, *Phys. Rev. A* **83**, 053618 (2011).
- [50] L. Pollet, M. Troyer, K. Van Houcke, and S. M. A. Rombouts, *Phys. Rev. Lett.* **96**, 190402 (2006).
- [51] P. Sengupta and C. D. Batista, *Phys. Rev. Lett.* **98**, 227201 (2007).
- [52] F. Hébert, F. Haudin, L. Pollet, and G. G. Batrouni, *Phys. Rev. A* **76**, 043619 (2007).
- [53] F. Hébert, G. G. Batrouni, X. Roy, and V. G. Rousseau, *Phys. Rev. B* **78**, 184505 (2008).
- [54] X. Barillier-Pertuisel, S. Pittel, L. Pollet, and P. Schuck, *Phys. Rev. A* **77**, 012115 (2008).
- [55] T. Roscilde, C. Degli Esposti Boschi, and M. Dalmonte, e-print arXiv:1105.1314 (to be published).
- [56] M. A. Cazalilla, *J. Phys. B* **37**, S1 (2004).
- [57] T. Giamarchi, *Quantum Physics in One Dimension* (Oxford University Press, Oxford, 2004).
- [58] F. Crépin, N. Laflorencie, G. Roux, and P. Simon, *Phys. Rev. B* **84**, 054517 (2011).
- [59] V. Ahufinger, L. Sanchez-Palencia, A. Kantian, A. Sanpera, and M. Lewenstein, *Phys. Rev. A* **72**, 063616 (2005).
- [60] Overlining a quantity will indicate averaging over all possible realizations of the disorder.
- [61] Y. Suzumura and H. Fukuyama, *J. Phys. Soc. Jpn.* **52**, 2870 (1983).
- [62] Y. Imry and S.-K. Ma, *Phys. Rev. Lett.* **35**, 1399 (1975).
- [63] S. Coleman, *Phys. Rev. D* **11**, 2088 (1975).
- [64] M. Mézard, G. Parisi, and M. A. Virasoro, *Spin Glass Theory and Beyond* (World Scientific, Singapore, 1987).
- [65] M. Mézard and G. Parisi, *J. Phys. I (France)* **1**, 809 (1991).
- [66] T. Giamarchi and P. Le Doussal, *Phys. Rev. B* **53**, 15206 (1996).
- [67] L. Fallani, J. E. Lye, V. Guarrera, C. Fort, and M. Inguscio, *Phys. Rev. Lett.* **98**, 130404 (2007).
- [68] N. Fabbri, D. Clément, L. Fallani, C. Fort, and M. Inguscio, *Phys. Rev. A* **83**, 031604 (2011).
- [69] T. Giamarchi and E. Orignac, *Theoretical Methods for Strongly Correlated Electrons* (Springer, New York, 2003).
- [70] E. Altman, E. Demler, and M. D. Lukin, *Phys. Rev. A* **70**, 013603 (2004).
- [71] M. Olshanii and V. Dunjko, *Phys. Rev. Lett.* **91**, 090401 (2003).
- [72] B. Paredes, A. Widera, V. Murg, O. Mandel, S. Fölling, I. Cirac, G. V. Shlyapnikov, T. W. Hänsch, and I. Bloch, *Nature (London)* **429**, 277 (2004).
- [73] A. Georges, O. Parcollet, and S. Sachdev, *Phys. Rev. B* **63**, 134406 (2001).