

# The Future of Global Water Stress: An Integrated Assessment

C. Adam Schlosser, Kenneth Strzepek, Xiang Gao, Arthur Gueneau,  
Charles Fant, Sergey Paltsev, Bilhuda Rasheed, Tony Smith-Greico,  
Élodie Blanc, Henry D. Jacoby and John M. Reilly



**Report No. 254**  
**January 2014**

The MIT Joint Program on the Science and Policy of Global Change is an organization for research, independent policy analysis, and public education in global environmental change. It seeks to provide leadership in understanding scientific, economic, and ecological aspects of this difficult issue, and combining them into policy assessments that serve the needs of ongoing national and international discussions. To this end, the Program brings together an interdisciplinary group from two established research centers at MIT: the Center for Global Change Science (CGCS) and the Center for Energy and Environmental Policy Research (CEEPR). These two centers bridge many key areas of the needed intellectual work, and additional essential areas are covered by other MIT departments, by collaboration with the Ecosystems Center of the Marine Biology Laboratory (MBL) at Woods Hole, and by short- and long-term visitors to the Program. The Program involves sponsorship and active participation by industry, government, and non-profit organizations.

To inform processes of policy development and implementation, climate change research needs to focus on improving the prediction of those variables that are most relevant to economic, social, and environmental effects. In turn, the greenhouse gas and atmospheric aerosol assumptions underlying climate analysis need to be related to the economic, technological, and political forces that drive emissions, and to the results of international agreements and mitigation. Further, assessments of possible societal and ecosystem impacts, and analysis of mitigation strategies, need to be based on realistic evaluation of the uncertainties of climate science.

This report is one of a series intended to communicate research results and improve public understanding of climate issues, thereby contributing to informed debate about the climate issue, the uncertainties, and the economic and social implications of policy alternatives. Titles in the Report Series to date are listed on the inside back cover.

Ronald G. Prinn and John M. Reilly  
*Program Co-Directors*

For more information, please contact the Joint Program Office

Postal Address: Joint Program on the Science and Policy of Global Change  
77 Massachusetts Avenue  
MIT E19-411  
Cambridge MA 02139-4307 (USA)

Location: 400 Main Street, Cambridge  
Building E19, Room 411  
Massachusetts Institute of Technology

Access: Phone: +1.617. 253.7492  
Fax: +1.617.253.9845  
E-mail: [globalchange@mit.edu](mailto:globalchange@mit.edu)  
Web site: <http://globalchange.mit.edu/>

# The Future of Global Water Stress: An Integrated Assessment

C. Adam Schlosser<sup>\*†</sup>, Kenneth Strzepek<sup>\*</sup>, Xiang Gao<sup>\*</sup>, Arthur Gueneau<sup>‡</sup>, Charles Fant<sup>\*</sup>, Sergey Paltsev<sup>\*</sup>, Bilhuda Rasheed<sup>\*</sup>, Tony Smith-Greico<sup>\*</sup>, Élodie Blanc<sup>\*</sup>, Henry Jacoby<sup>\*</sup>, and John Reilly<sup>\*</sup>

## Abstract

*We assess the ability of global water systems, resolved at 282 large river basins or Assessment Sub Regions (ASRs), to the meet water requirements over the coming decades under integrated projections of socioeconomic growth and climate change. We employ a Water Resource System (WRS) component embedded within the MIT Integrated Global System Model (IGSM) framework in a suite of simulations that consider a range of climate policies and regional hydroclimatic changes through the middle of this century. We find that for many developing nations water-demand increases due to population growth and economic activity have a much stronger effect on water stress than climate change. By 2050, economic growth and population change alone can lead to an additional 1.8 billion people living in regions with at least moderate water stress. Of this additional 1.8 billion people, 80% are found in developing countries. Uncertain regional climate change can play a secondary role to either exacerbate or dampen the increase in water stress due to socioeconomic growth. The strongest climate impacts on relative changes in water stress are seen over many areas in Africa, but strong impacts also occur over Europe, Southeast Asia and North America. The combined effects of socioeconomic growth and uncertain climate change lead to a 1.0 to 1.3 billion increase of the world's 2050 projected population living in regions with overly exploited water conditions—where total potential water requirements will consistently exceed surface-water supply. Under the context of the WRS model framework, this would imply that adaptive measures would be taken to meet these surface-water shortfalls and would include: water-use efficiency, reduced and/or redirected consumption, recurrent periods of water emergencies or curtailments, groundwater depletion, additional inter-basin transfers, and overdraw from flow intended to maintain environmental requirements.*

## Contents

1. INTRODUCTION.....	2
2. MODELS AND METHODS.....	3
2.1 The IGSM-WRS Model .....	3
2.2 Model Experiments .....	5
2.3 Measure of Water Stress .....	8
3. RESULTS .....	10
3.1 Baseline Scenario .....	10
3.2 Autonomous Effects of Economic Growth and Climate Change .....	11
3.2.1 Economic Growth .....	11
3.2.2 Global and Regional Climate-Change .....	14
3.3 Integrated Projections Including Economic Growth and Climate Change .....	17
3.4 Population at Risk to Water Stress .....	22
5. DISCUSSION AND CLOSING REMARKS .....	26
5. REFERENCES.....	29

---

<sup>\*</sup> Joint Program on the Science and Policy of Global Change, Massachusetts Institute of Technology, Cambridge, MA, USA.

<sup>†</sup> Corresponding author (email: [casch@mit.edu](mailto:casch@mit.edu)).

<sup>‡</sup> International Food Policy Research Institute (IFPRI), Washington, D.C., USA.

## 1. INTRODUCTION

Concern about projected global climate change and other pressures on our natural, managed, and built environments have focused particular attention on the availability and reliability of water supplies in the coming decades. As a result, there is a growing need for modeling and analyses tools that can provide quantitative insights into these issues while representing the full integration of the climate system with its socioeconomic drivers, hydrology and water supplies, water use sectors, and management strategies. In response to the inadequate understanding of critical interactions between natural processes and human activities over a wide range of spatial and temporal scales, a subgroup of the International Group of Funding Agencies for Environmental Change Research includes as a key element of its Belmont Challenge (IDFAGCR, 2013) the need, “to deliver knowledge needed for action to avoid and adapt to detrimental environmental change.” Additionally, they selected freshwater security as one of five priority foci, and the need for integrated research, influenced by natural hydrometeorological processes as well as the many complex facets of the societal footprint, such as land-use or water extraction (for agriculture or industry), which in-turn are governed by patterns of consumption or population change. While global water modeling tools have been developed (e.g., Hirabayashi et al., 2008; Okazaki et al., 2012; Tang and Lettenmaier, 2012; Arnell and Gosling, 2013; Döll and Zhang, 2010; Fung et al., 2011; Gosling et al., 2010; Schewe et al., 2013) most of the experimentation studies conducted with these models have been driven by exogenous climate forcing that is disconnected from consistent socioeconomic pathways. Therefore, they fall short of the Belmont Challenge call for understanding “critical interactions between natural processes and human activities.”

In response to this challenge we have expanded the MIT Integrated Global System Model (IGSM) framework to include a Water Resource System (WRS) component (Strzepek et al., 2013). Here the IGSM-WRS is applied at global scale to assess future water stress, resolved for 282 interlinked basins or Assessment Sub-Regions (ASRs). Water resources and our ability to effectively manage them will be shaped by both human requirements for withdrawal from natural sources and changes in regional climate. Our analysis is designed to isolate these two influences in simulations to 2050. To quantify the influence of economic growth alone, simulations compare water stress under economic growth with a no-growth scenario, holding climate at its historical condition. To understand the role of climate, a no-growth economy is assumed and water stress is assessed under different scenarios of climate change reflecting both regional uncertainty and climate policy. Two policy cases are used: one with unconstrained emissions and one imposing a 560 ppm CO<sub>2</sub>-equivalent stabilization target. The IGSM framework allows for a pattern-scaling approach (Schlosser et al., 2012) that can explore the impact of uncertain regional climate change. Therefore, we consider two patterns of climate change, obtained from the pool of climate models from the Coupled Model Intercomparison Project Phase 3 (CMIP3, Meehl et al., 2007). The first pattern we denote as relatively “wet” and

the other as relatively “dry” based on a global land-only analysis of Climate-Moisture Index<sup>1</sup> (CMI) trends in response to increased greenhouse gases (Strzepek and Schlosser, 2010). The land-only focus in the assessment of CMI trends was done to emphasize the range of precipitation and evapotranspiration outcomes that affect the water balance of river basins. Finally, the total effect of these influences is evaluated in simulations imposing both economic growth and climate change.

In Section 2 we summarize the model applied in the analysis and the experiments used to separate out the various contributors to increasing stress on water systems. Section 3 presents the key results. In Section 3.1 we establish a baseline for comparison of the various influences and present results for runoff and water stress by ASR for a recent period. Section 3.2 presents results of the separate effects of economic growth and climate change on water stress. Finally, in Section 3.3 we show the results for their combined effects, via two concepts of water stress. Section 4 concludes with a discussion of applications and next steps in this research and assessment activity.

## 2. MODELS AND METHODS

### 2.1 The IGSM-WRS Model

The focus of this numerical experimentation and analysis is evaluation of the impact of socioeconomic growth and climate changes on the future availability of water for management purposes at large watersheds, or ASRs, across the globe. Strzepek et al. (2013) provides a complete description of the natural and managed components of the IGSM-WRS (**Figure 1**). Given a scenario of global climate policy, the Emissions Prediction and Policy Analysis (EPPA) component of the IGSM provides the WRS with economic drivers for the estimation of water demand (population, GDP) and supplies results for greenhouse gas emissions and other data to the MIT Earth System Model (MESM). It in turn computes the relevant climate variables, and inputs to the estimation of runoff and irrigation use. The WRS combines these inputs and simulates the operation of a water management system (WMS) to assess the ability to meet water requirements at the ASR level.

The impact of the plausible range in regional climate change resulting from each of these emission scenarios is considered using the IGSM outputs and a pattern-scaling method

---

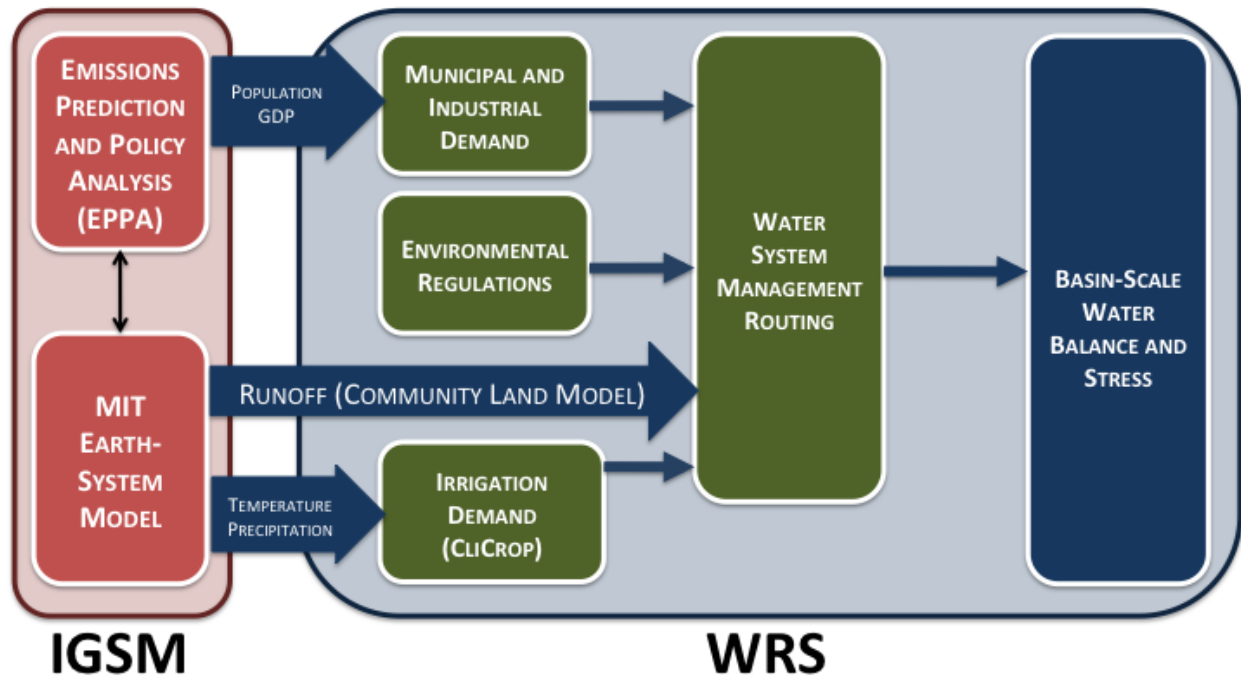
<sup>1</sup> The Climate Moisture Index (CMI, Willmott and Feddema, 1992) is computed using the ratio of annual precipitation ( $P$ ) to annual potential evapotranspiration, ( $PET$ ). As such, CMI illustrates the relationship between potential plant water demand and available precipitation. The CMI indicator ranges from -1 to +1, with wet climates showing positive CMI, and dry climates negative CMI. When  $P < PET$ :

$$\text{Climate Moisture Index (CMI)} = (P / PET) - 1$$

When  $P \geq PET$ :

$$\text{Climate Moisture Index (CMI)} = 1 - (PET / P)$$

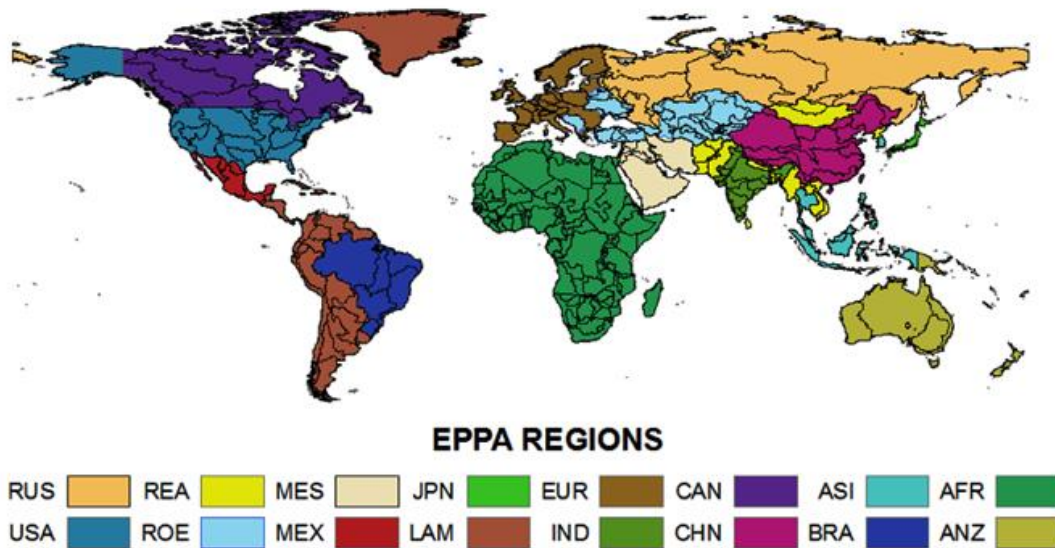
(Schlosser et al., 2012). The supply of surface water at each ASR is estimated as runoff from the Community Land Model (Oleson et al., 2004). Additionally, the estimated runoff is further refined through a calibration procedure (Strzepek et al., 2013) in order to supply each basin with as realistic natural flow conditions as possible, and then aggregated to the ASR level. For the simulations described below the IGSM is employed using its median values of both climate parameters (climate sensitivity, ocean uptake, and aerosol effects) and economic parameters (Webster et al., 2012).



**Figure 1. Schematic of IGSM-WRS.** Shown are the connections between the economic and climate components of the Integrated Global System Model (IGSM) framework and the Water Resource System (WRS) component. From the IGSM, the Emissions Prediction and Policy Analysis (EPPA) model provides population and gross domestic product (GDP) to each of the ASRs (shown in Figure 2). These determine the municipal and industrial demands for water. From the Earth System Model, runoff is determined from the Community Land Model employed within the IGSM's Global Land System (Schlosser et al., 2005). In addition, irrigation demands are calculated by the CliCrop model (Fant et al., 2013). All of these demands and surface-water supply are fed into the water-system management in order to optimize the routing of water across all of the ASRs. The optimization scheme employed in this routing procedure is described in Strzepek et al., 2013. The resultant routing is then analyzed via the water stress indicators (described in the text).

For this study, the WRS is configured to represent 282 ASRs over the globe (**Figure 2**). The ASRs are defined by major river basins or parts of river basins contained within a country. For example, the Nile river basin is divided into 6 ASRs as the Blue Nile begins in Ethiopia (at Lake Tana), the White Nile begins in Uganda (at Lake Victoria), and they converge in Sudan to form

the Nile River, which then discharges into the Mediterranean Sea while crossing Egypt. A comprehensive ASR listing is provided in Strzepek et al. (2013) as well as the basin-level processes of the natural and managed water system that are represented by the model. Briefly, for each ASR, available reservoirs are aggregated into a single storage unit that is fed by runoff and input from upstream ASRs and that serves human water sector requirements and a required environmental flow. Non-irrigation requirements—for municipal, industrial, and livestock uses—are driven by socioeconomic factors on the assumption they are not significantly influenced by climate. Irrigation requirements, on the other hand, are determined by environmental conditions. For purposes here the irrigated area is held constant, and we assess whether there is adequate water to meet changing irrigation needs under changes in overall economic activity and climate.



**Figure 2. Schematic of IGSM-WRS.** Black contours delineate the Assessment Sub Regions (ASRs) defined for the Water Resource System (WRS) within the IGSM-WRS framework. The color shading indicates the economic regions that are resolved from the Emissions Prediction and Policy Analysis (EPPA) model.

## 2.2 Model Experiments

A suite of simulations is used to explore the key drivers of water stress within each of the 282 basins of the global WRS configuration used herein. **Table 1** provides a summary of cases that span both growth assumptions (no growth and two future growth scenarios) and different scenarios of the influence of climate (alternative greenhouse gas control policies as well as a range of climate-change patterns as determined by CMIP3 climate models). They thus form four groups, which guide the layout of results in the discussion below.

- **Baseline.** To provide a basis for comparing the effects of growth and climate change over time a Baseline scenario involves historic climate (HC), which is based on the simulated 20<sup>th</sup>

century climate from the IGSM (e.g., Sokolov et al., 2005) downscaled to a  $2^\circ \times 2^\circ$  gridded resolution using observations (Schlosser et al., 2012), but with no economic growth (NG). This condition is explored in Section 3.1.

- **Economic Growth Effects.** To isolate the effect of economic growth on water conditions a set of scenarios (top line in Table 1) imposes historic climate (HC) and explores the change with different growth conditions. They include no growth (Baseline), growth with unconstrained emissions (**UCE**) analyzed by Sokolov et al. (2005). The growth rates, by EPPA region, assumed in this case are provided in **Table 2**, and these rates are assumed to hold for the ASRs within the region. This case is designated UCE-HC. An additional case, designated L1S-HC, is formulated applying the growth that is projected under a global policy to restrain global emissions to the Level 1 scenario (**L1S**) developed for the U.S. Climate Change Science Program (Clarke et al., 2007). The L1S scenario imposes a target of 560 ppm CO<sub>2</sub>-equivalent concentrations by 2100. Meeting these targets lowers economic growth, especially in some parts of the developing world: primarily in Africa, the Middle East, and Central and South America, also shown in Table 2 (Webster et al., 2012). The effects on water requirements of these different growth assumptions are discussed in Section 3.2a. The UCE and L1S scenarios use the same global population projection, the United Nations' medium-variant projection, (United Nations, 2013). To be consistent with the IGSM uncertainty formulation, socioeconomic projections are provided by EPPA regions (Figure 2). To provide these population projections at the ASR scale, the EPPA regions' rate of population changes are mapped to the ASR regions that fall within each EPPA region. The ASR based population projections use the growth rates from EPPA with the current populations provided at the ASR level developed by IPFRI (Rosegrant et al. 2008) (**Figure 3**).
- **Climate Change Effects.** The left column of the table shows cases designed to address the effect of regional climate-change uncertainty. All are studied on the assumption of no economic growth (NG) effects on water demands (the emissions scenarios driving these climate effects reflect economic growth). Through a pattern-scaling method developed by Schlosser et al. (2012) and employed in other studies within the IGSM framework (e.g., Gao et al., 2013; Strzepek et al., 2011) the IGSM-WRS was configured with two pattern-scaling kernels of regional climate outcomes under each of the socioeconomic/emission scenarios (UCE and L1S). These pattern-change kernels were derived from the CMIP3 climate-models. As previously mentioned, two patterns were chosen to reflect the "driest" (**DRY**) and the "wettest" (**WET**) changes over land as determined by their CMI trends through the 21<sup>st</sup> century (Strzepek and Schlosser, 2010). It is worthwhile to note that this selection is based on the moisture index over all land, and thus these are not necessarily the wettest or driest pattern for every ASR. The resulting  $2^\circ \times 2^\circ$  set of cases, all with no growth (NG-UCE-WET, NG-UCE-DRY, NG-L1S-WET and NG-L1S-DRY) are discussed in Section 3.2b.
- **Combined Growth and Climate Change Effects.** The combined effect of growth and climate are explored using the four cases in the lower-right quadrant of the table. The behaviors of the two climate-change patterns (WET and DRY) are formulated under both unconstrained growth



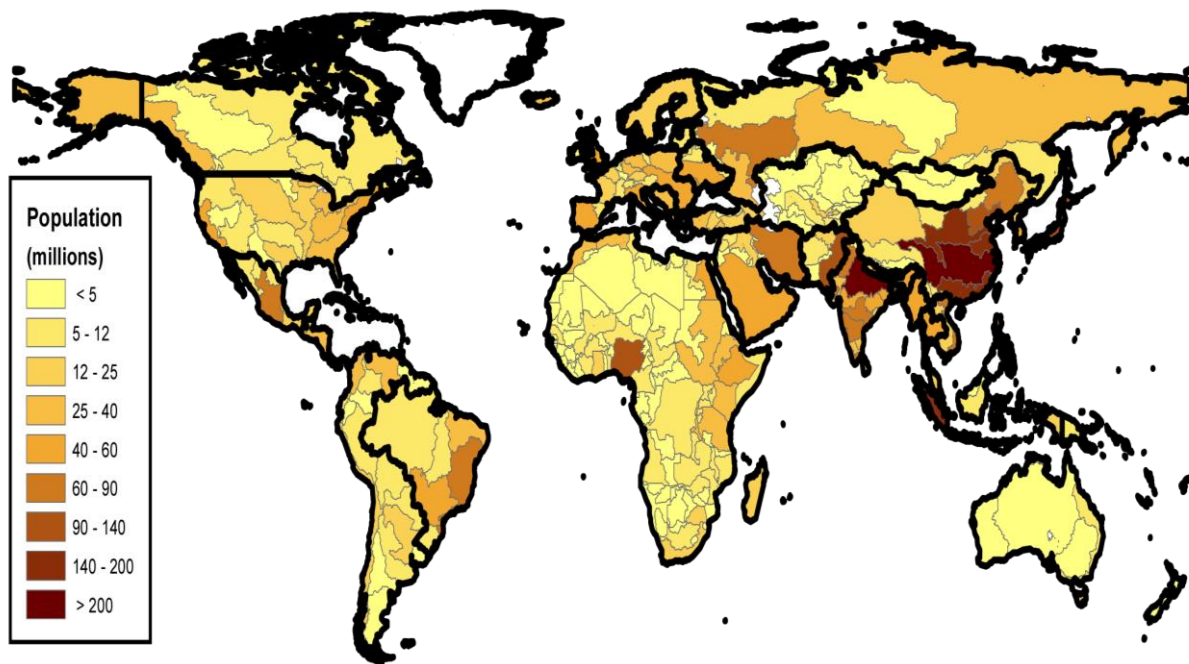
(UCE-WET and UCE-DRY) as well as for the Level 1 climate-policy growth (L1S-WET and L1S-DRY). The results for these combined effects are presented in Section 3.3

**Table 1. Climate-change pattern and socioeconomic scenarios.** The table provides a guide to the cases used in the analysis. The columns depict the branches of simulations performed to assess the impact of three economic pathways: no growth (NG), unconstrained emissions (UCE), and a Level 1 Stabilization (L1S) scenario that stabilizes CO<sub>2</sub>-equivalent concentrations at 560 ppm by 2100. Two climate-model patterns are used from the IPCC CMIP3 archive in the pattern scaling of IGSM projections, and were selected according to their relatively wet (WET) and dry (DRY) trending climate-moisture indices averaged globally over land only.

	No Growth (NG)	Unconstrained Emissions Growth (UCE)	Level 1 Stabilization Growth (L1S)
<b>Historic Climate (HC)</b>	Baseline	UCE-HC	L1S-HC
<b>UCE with DRY pattern</b>	NG-UCE-DRY	UCE-DRY	
<b>UCE with WET pattern</b>	NG-UCE-WET	UCE-WET	
<b>L1S with DRY pattern</b>	NG-L1S-DRY		L1S-DRY
<b>L1S with WET pattern</b>	NG-L1S-WET		L1S-WET

**Table 2. Economic Growth Assumptions.** Gross domestic product (GDP) in 2050 for the geographical regions resolved by the Emissions Prediction and Policy Analysis (EPPA) model (see Figure 1). Absolute values of GDP (in constant 2000 US\$) are shown for 2000 as well as the values attained for the two socioeconomic scenarios considered (unconstrained emissions, UCE, and Level 1 Stabilization, L1S, see Table 1 and text for details). These changes are calculated and shown as average annual growth rates, accordingly.

Major Regions	Region	GDP (trillions US\$)			Average Annual GDP Growth Rate (%)	
		2000	L1S 2050	UCE 2050	L1S	UCE
<b>Developed</b>	<b>ANZ</b>	0.57	2.51	2.58	3.0	3.1
	<b>CAN</b>	0.71	2.81	2.95	2.8	2.9
	<b>ROE</b>	0.34	1.49	1.48	3.0	3.0
	<b>EUR</b>	10.26	37.57	37.96	2.6	2.7
	<b>JPN</b>	6.07	23.77	24.06	2.8	2.8
	<b>USA</b>	9.52	38.54	38.38	2.8	2.8
<b>Other G20</b>	<b>CHN</b>	1.05	8.04	7.61	4.2	4.0
	<b>RUS</b>	0.51	2.72	2.97	3.4	3.6
	<b>BRA</b>	1.08	5.13	5.09	3.2	3.1
	<b>IND</b>	0.49	2.06	2.02	2.9	2.8
	<b>MEX</b>	0.40	1.32	1.44	2.5	2.6
<b>Developing</b>	<b>AFR</b>	1.01	3.15	4.42	2.3	3.0
	<b>ASI</b>	0.23	1.12	1.11	3.2	3.2
	<b>LAM</b>	1.75	7.89	9.19	3.0	3.4
	<b>MES</b>	0.61	1.86	2.52	2.2	2.9
	<b>REA</b>	1.20	4.32	4.62	2.6	2.7



**Figure 3. Global Population at 2010.** Global distribution of population (in millions) projected onto the Assessment Sub Regions (ASRs) of the WRS water-management network of river basins. The bold black contours denote the EPPA regions (also depicted in Figure 2). As described in text, the global population projections for the IGSM UCE and L1S scenarios (to 2050) are supplied at the EPPA region, and are then downscaled proportionally to the ASRs according to the 2010 population distribution shown here.

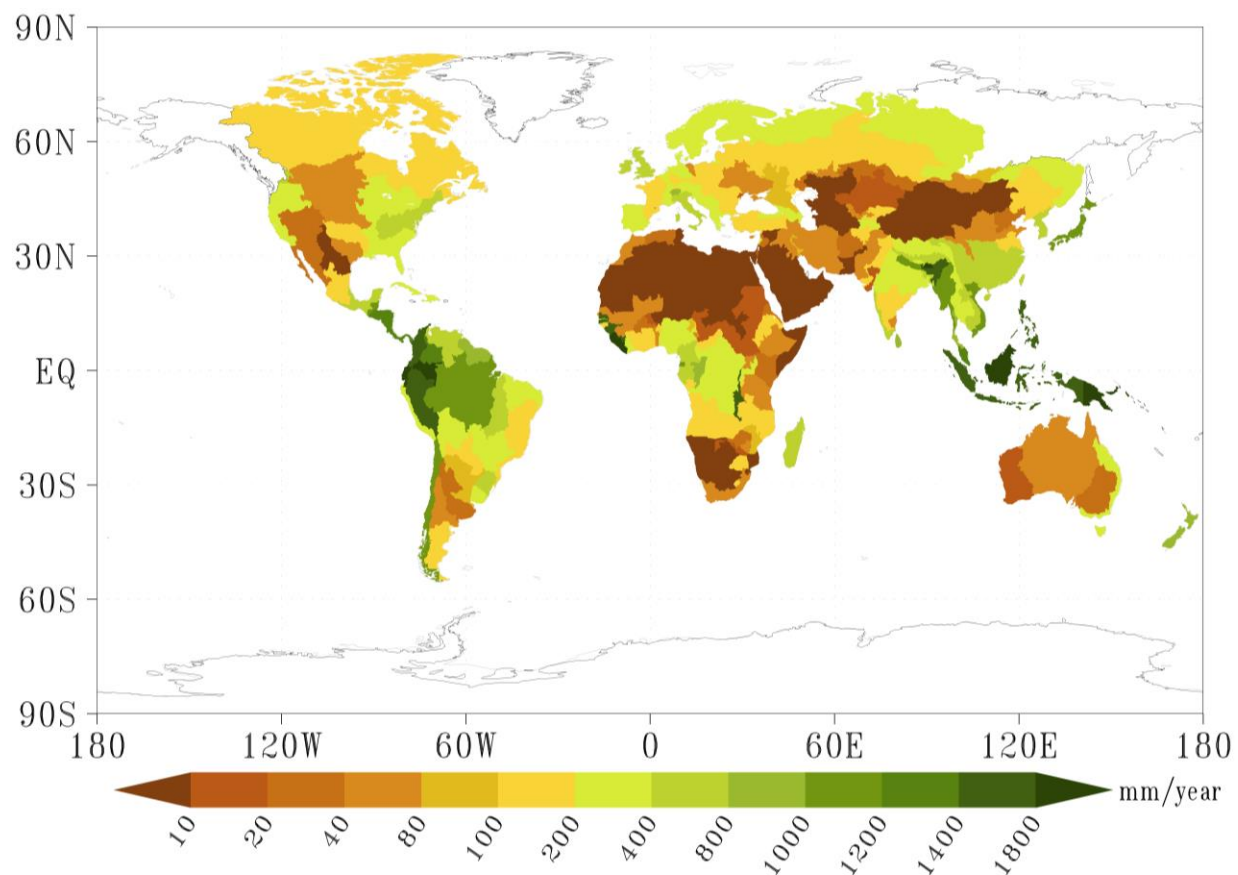
The IGSM-WRS is integrated to 2050 for all cases. The analyses presented below will focus on the ability of the ASRs to meet the water demands (Strzepek et al., 2013) and the relative stress that these demands place on renewable surface water as well as water that is available within the managed system.

### 2.3 Measure of Water Stress

To assess the stress on water resources for each ASR we use the metrics adopted for other applications of the IGSM-WRS (Strzepek et al., 2013; Blanc et al., 2013). We define a water stress index (WSI) similar to that developed by Smakhtin et al. (2005). It is based on the input water flows, from surface runoff and upstream ASRs, and desired withdrawals and thus is a measure of the pressure that human water uses exert on renewable surface fresh water. It is calculated, for every ASR, as the ratio of its mean annual total water requirements (*TWR*) to the mean annual runoff (*RUN*) generated within the ASR plus inflow (*INF*) from any upstream ASR that flows directly into it,

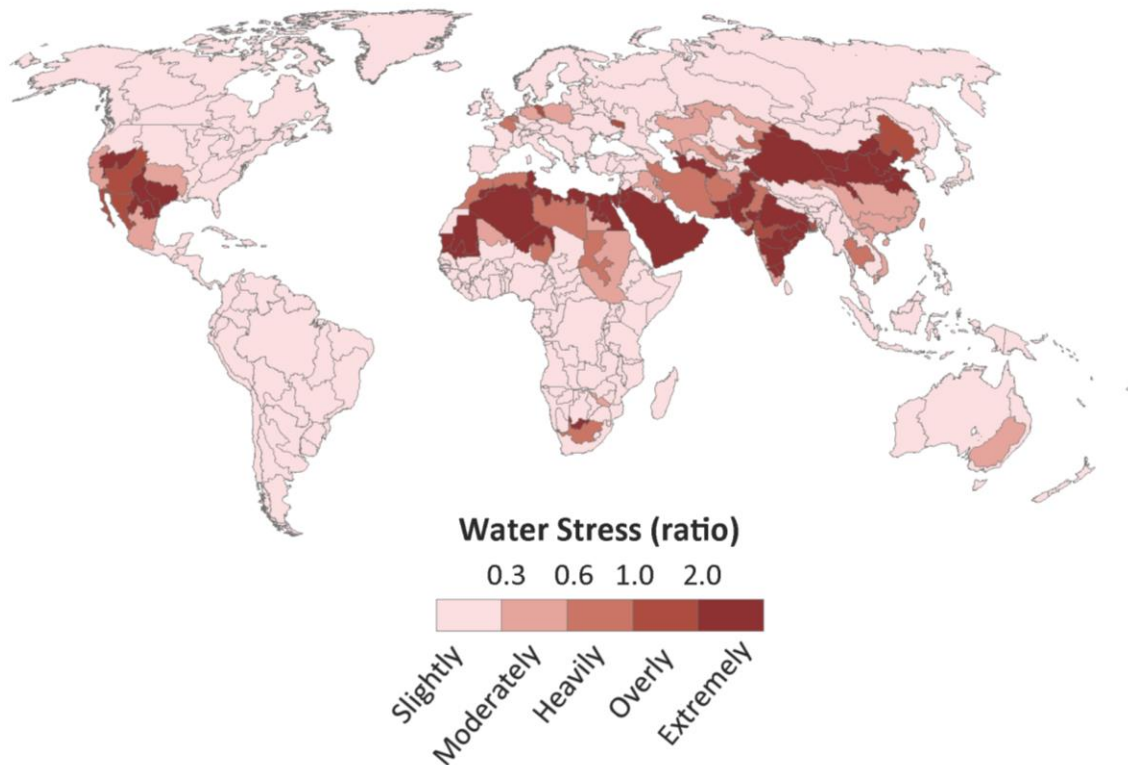
$$WSI = \frac{TWR}{RUN+INF} \tag{1}$$

as described by Strzepek et al. (2013), for all water sectors except irrigation (i.e. municipal and industrial), water requirements included in *TWR* are represented by consumptive use<sup>2</sup>. The inflow into any given ASR is a consequence of flow regulated from upstream ASRs, and therefore WSI is an evaluation metric of the managed water system as simulated by WRS. Irrigation receives its total withdrawal, with its return flow, which may be substantial, credited to the downstream ASR (see Strzepek et al., 2013 for details). We also characterize the severity of water stress according to Smakhtin (2005), which classifies an ASR’s water use as slightly exploited when  $WSI < 0.3$ ; moderately exploited when  $0.3 \leq WSI \leq 0.6$ ; heavily exploited when  $0.6 \leq WSI \leq 1$ ; overly exploited when  $1 \leq WSI < 2$ ; and extremely exploited when  $WSI \geq 2$ . Similar water-stress indices are computed in other studies and generally consider a threshold of 0.4 to indicate severe water limitation (e.g., Vörösmarty et al., 2000; Wada et al., 2011).



**Figure 4. Annual Runoff.** Global distribution of annual runoff (mm/year) as simulated by CLM from a historical climate run of the IGSM and projected onto the Assessment Sub Regions (ASRs) of the WRS water-management network of river basins. The simulated ASR values are an average for the years 1981–2000.

<sup>2</sup> Based on the assumption that any return flow (withdrawal in excess of consumption) is likely returned to the ASR storage within the month. This assumption is not appropriate for irrigation because return flow, which may be substantial, may not be returned to the ASR storage immediately.



**Figure 5. Water Stress.** Shown is the global distribution of water stress index (WSI) by Assessment Sub Regions (ASRs) as simulated by WRS from a historical climate run of the IGSM-WRS (i.e. the Baseline in Table 1). The simulated values are an average for the years 1981-2000 of the historical Baseline simulation (see Table 1 and corresponding text). The shading levels also denote the Smakhtin et al. (2005) stress categories:  $WSI < 0.3$  is slightly exploited,  $0.3 \leq WSI < 0.6$  is moderately exploited,  $0.6 \leq WSI < 1$  is heavily exploited,  $1 \leq WSI < 2$  is overly exploited, and  $WSI \geq 2$  is extremely exploited.

### 3. RESULTS

#### 3.1 Baseline Scenario

The Baseline is simulated with 20<sup>th</sup> century climate and current (i.e. recent year) economic conditions. **Figure 4** maps the WRS annual runoff estimate within each ASR, averaged over the period 1980–2000. The Amazon Basin, Southeast Asia, and parts of Equatorial Africa and Indonesia stand out as showing the highest annual rates of runoff. In addition, the stark east–west contrast of runoff over the U.S. can be seen. Among the lowest rates of runoff are those over most of Northern Africa, the Middle East, central Australia, and Mongolia.

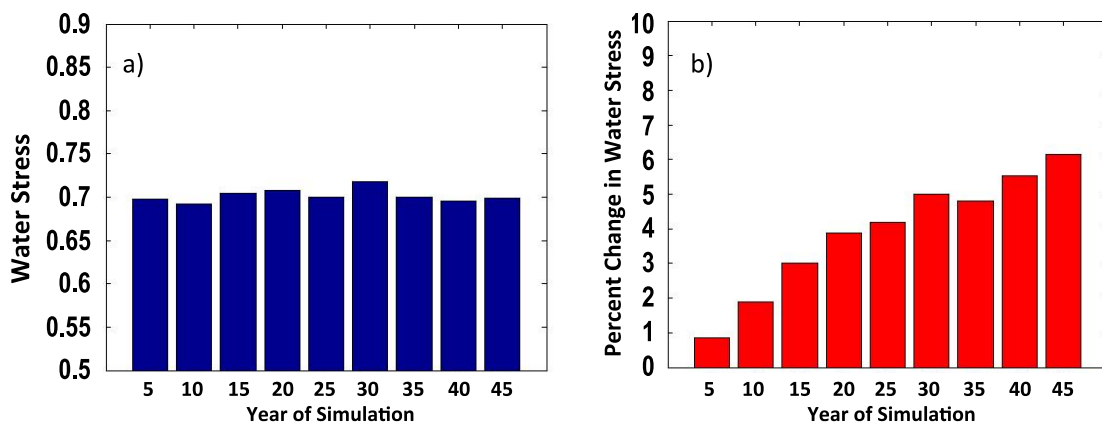
Water stress, WSI, for the same historical period is shown in **Figure 5**. Areas of highest water stress are aligned across many of the regions of low runoff and arid conditions. Additionally, substantial stress can be seen in the southwestern portions of the U.S., southeastern Australia (the Murray-Darling Basin), and interior portions of South Africa and Namibia. By this measure, most of the ASRs across the globe fall within the slightly stressed characterization. However, of

particular concern are the regions shaded within the heavily to extremely stressed conditions. Many of these ASRs correspond to regions of very low runoff (Fig. 4). Exceptions to this characterization are seen for ASRs located in India, showing significant runoff but extreme over-exploitation of water resources. This is a result of the combined effects of India’s large population and developing economy—which both contribute toward high water demand. This high value of WSI is also a consistent reflection of India’s extensive groundwater extraction.

### 3.2 Autonomous Effects of Economic Growth and Climate Change

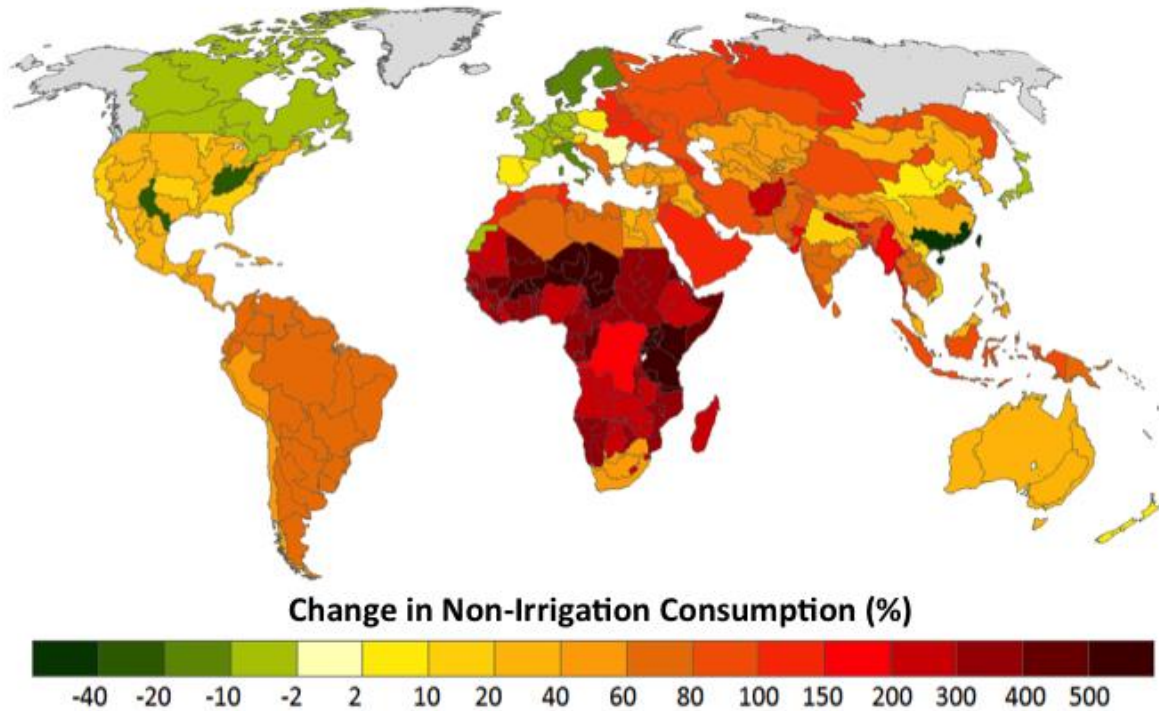
#### 3.2.1 Economic Growth

One set of simulations supports an assessment of the effect of economic growth from an unconstrained emission pathway (UCE) in contrast to a Level 1 climate policy (L1S) if the historical climate (HC) conditions are assumed to remain steady to 2050. A comparison of the UCE-HC case is presented with the Baseline in **Figures 6a and 6b**. Figure 6a shows the level of water stress under the Baseline scenario, aggregated to the global level. In this global aggregation the ASRs are weighted by total water requirement. The effects of climate variability are seen in both cases and typically result in global WSI swings of  $\pm 1\%$ . However, the effect of unconstrained socioeconomic growth is salient (Figure 6b) with respect to associated climate variation, and implies that an increase in global WSI of 6% can result from economic growth alone.



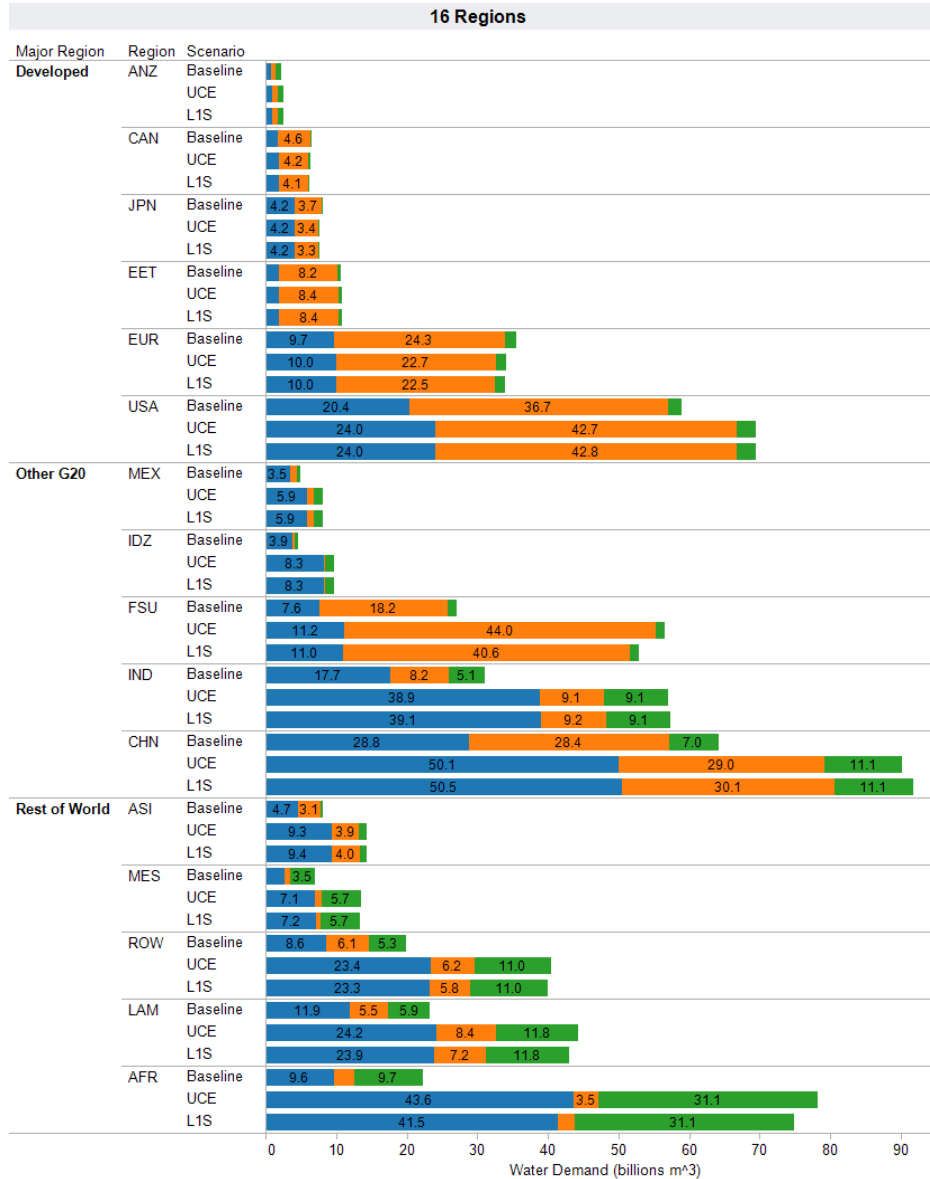
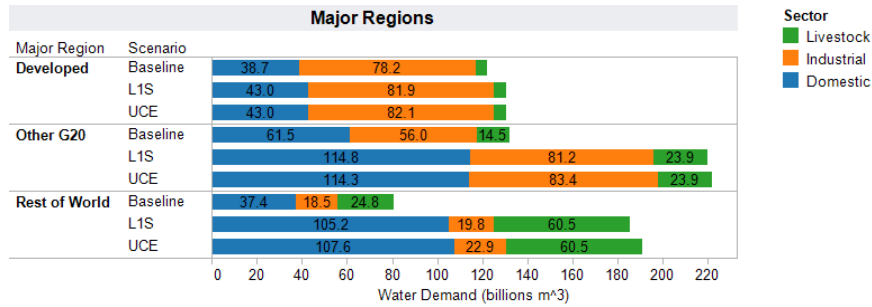
**Figure 6. Global Water Stress.** Shown are time series of globally averaged water stress index, WSI (unitless), simulated by the IGSM-WRS framework. Global values are obtained by weighting each ASR according to its total annual withdrawal. The plot shows successive 5-year averages. In panel a), the bars represent simulated water stress as a result of the historical climate conditions (Baseline case in Table 1) simulated by the IGSM. Panel b) presents the relative change in water stress, given as a percentage from the corresponding baseline value, that results from a sensitivity run where the trends in global, human water demands are based on the UCE IGSM scenario (first 50 years of the 21st century) are added onto the historical time series WRS inputs (case UCE-HC in Table 1). In both simulation results shown, the (historical) climate forcing is identical, and thus the difference plot (right panel) represents the impact of additional, unconstrained human water demand on water stress over the 50-year simulation.

**Figure 7** shows, for the UCE-HC case, the change in non-agricultural water consumption by ASR over the period 2001–2010 to 2041–2050. These changes in demand contribute to the global WSI increase seen in Figure 6b. The largest, widespread relative changes occur over much of Africa, and highlight the effects of extensive growth anticipated for these developing nations. Further, the Middle East and many ASRs over Asia show increases in water requirements that exceed 100%. In contrast, benign changes or even reductions in non-irrigation consumption occur over much of Europe, North America, and Australia.



**Figure 7. Change in Non-Irrigation Water Consumption by ASR.** Percentage change in ASR non-irrigation water demand from 2001–2010 to 2041–2050, between the Baseline and UCE-HC scenarios shown at the ASR levels. The UCE-HC scenario only considers changes in water demand as a result of economic growth factors—and climate conditions are held fixed to the historic conditions. Positive values indicate that the UCE-HC conditions are increasing non-irrigation water requirements.

This difference in consumption changes between more- and less-developed regions is also evident when results are aggregated to the developed G20 countries and the remaining developing nations (**Figure 8**). Water requirements of the developed world are relatively insensitive to socioeconomic growth in either the UCE or L1S scenarios. Among these nations, the U.S. shows the largest change in water demand with an increase of approximately 17% for either the UCE or L1S scenario. Among the developing G20 nations, the Former Soviet Union (FSU) and India see the largest relative increases of about 50%. In absolute terms,



**Figure 8. Non-Irrigation Water Requirements by Region.** Shown are the totals for non-irrigation annual water demand (billion m<sup>3</sup>/yr) from 2001–2010 to 2041–2050, for the Baseline, UCE, and L1S scenarios. The ASR-level data is aggregated to the EPPA regions (see Figure 1) as well as for developed, other G20 nations, and the rest of the world.

China's increases in demand are comparable (26 billion m<sup>3</sup>/year), but in relative terms its increase is 40% from its Baseline value. Generally speaking, developing nations roughly double their non-agricultural water demands. The one notable exception is Africa, which sees a nearly four-fold increase in water demand. The effect of slower growth under the LIS scenario provides a marginal buffering of this increase, with total water requirements about 5% less compared to the UCE scenario.

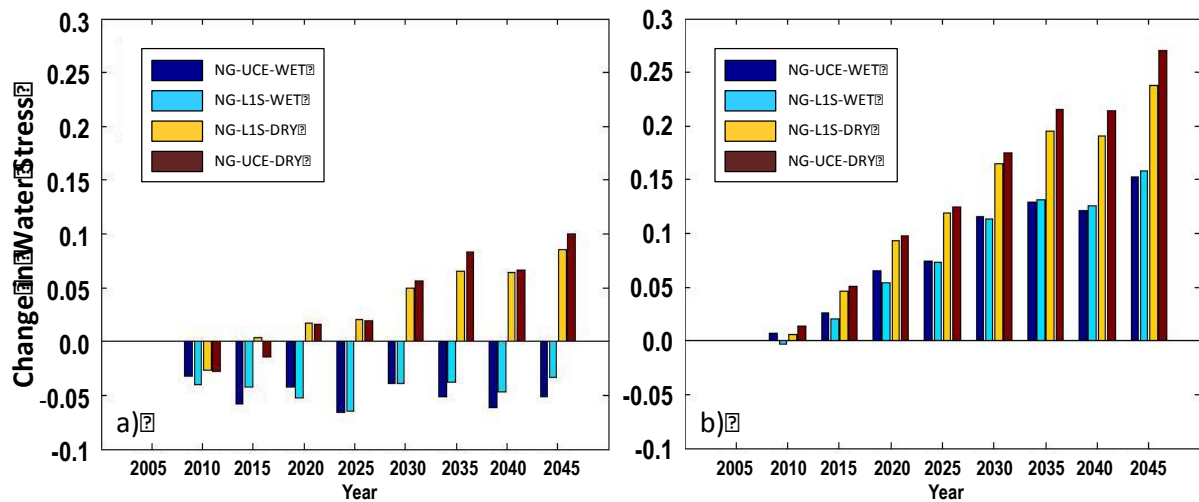
Nevertheless, these comparative increases in water demand between developed and developing nations are in striking contrast to the projected changes in GDP. As shown in Table 2, while growth rates are similar or lower, the largest absolute changes in GDP are found in developed nations (such as the U.S., Japan, and in Europe), with much smaller absolute changes found for Africa, India, and China. These absolute differences reflect slower rates of growth in developed nations but from a much higher base level of GDP at present. This dichotomous relationship among nations between changes in water demands and GDP growth results from the statistically estimated relationships in the WRS between various water demands (industrial, municipal) and GDP that show plateauing demand at higher levels of economic activity (see Strzepek et al., 2013).

### ***3.2.2 Global and Regional Climate-Change***

Next, we consider the simulations that single out the effects of trends in climate (i.e. precipitation, temperature, and runoff) on the modeled water stress, and the interplay of climate policy and uncertainties in regional patterns of change. For a global aggregate, we find that uncertain regional climate change has a much greater influence on water stress than the effect of the emissions scenario on climate change. These results are shown in **Figure 9**, which tracks global water stress (shown as successive 5-year mean values) out to 2050. Figure 9a shows the global result if the ASRs are weighted by their total water use. In this picture water stress is lowered through 2050 under the relatively WET climate-pattern trend. On the other hand, the DRY climate-pattern trend produces a monotonic increase in water stress over the period.

Additional insights are gained if the water-use weighting is removed from the global averaging (Figure 9b). For the unweighted case, both the wet and dry patterns both show increasing trends in water stress. In addition their trends are larger than for the weighted case. This difference between the weighted and unweighted averaged results indicates that: 1) the majority of the ASRs that contain largest increases in WSI through the period have relatively low total withdrawals through 2050; 2) for the WET scenarios, ASRs with higher withdrawal rates experience decreases in water stress through 2050 (illustrated in results below). In all these cases the choice of the climate-policy scenario (UCE or LIS) has a relatively small effect on the global WSI trends compared to the choice of the climate-pattern trends or the choice of weighted averaging. It is important to note that, because of the influence of emissions before 2000 and climate inertia, the relative importance of the policy choice is expected to be greater if the simulation were extended to decades beyond 2050.

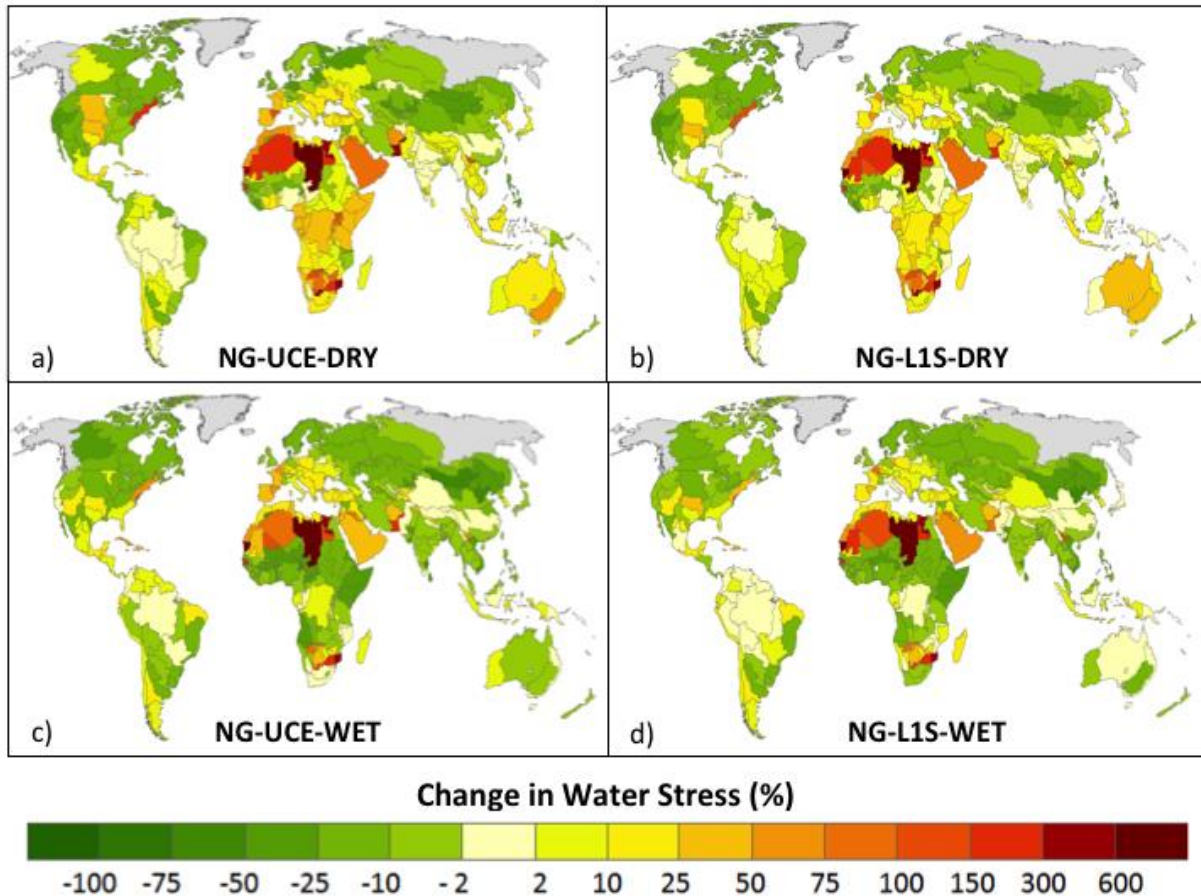




**Figure 9. Trends in Global Water Stress from Climate Factors.** The change in water stress index, WSI (unitless), is shown as the difference in successive 5-year running means from its 2005–2009 average value. The global values are derived from ASR values that are: a) weighted or b) unweighted by its total annual withdrawal. The simulations assume no growth (NG) in human water demands and thus highlight the effect of climate change as a result of unconstrained emissions (UCE) and a stabilization policy (L1S) as well as the effect of different regional climate change patterns (DRY and WET). Refer to Table 1 and corresponding text for further details regarding the suite of simulations performed.

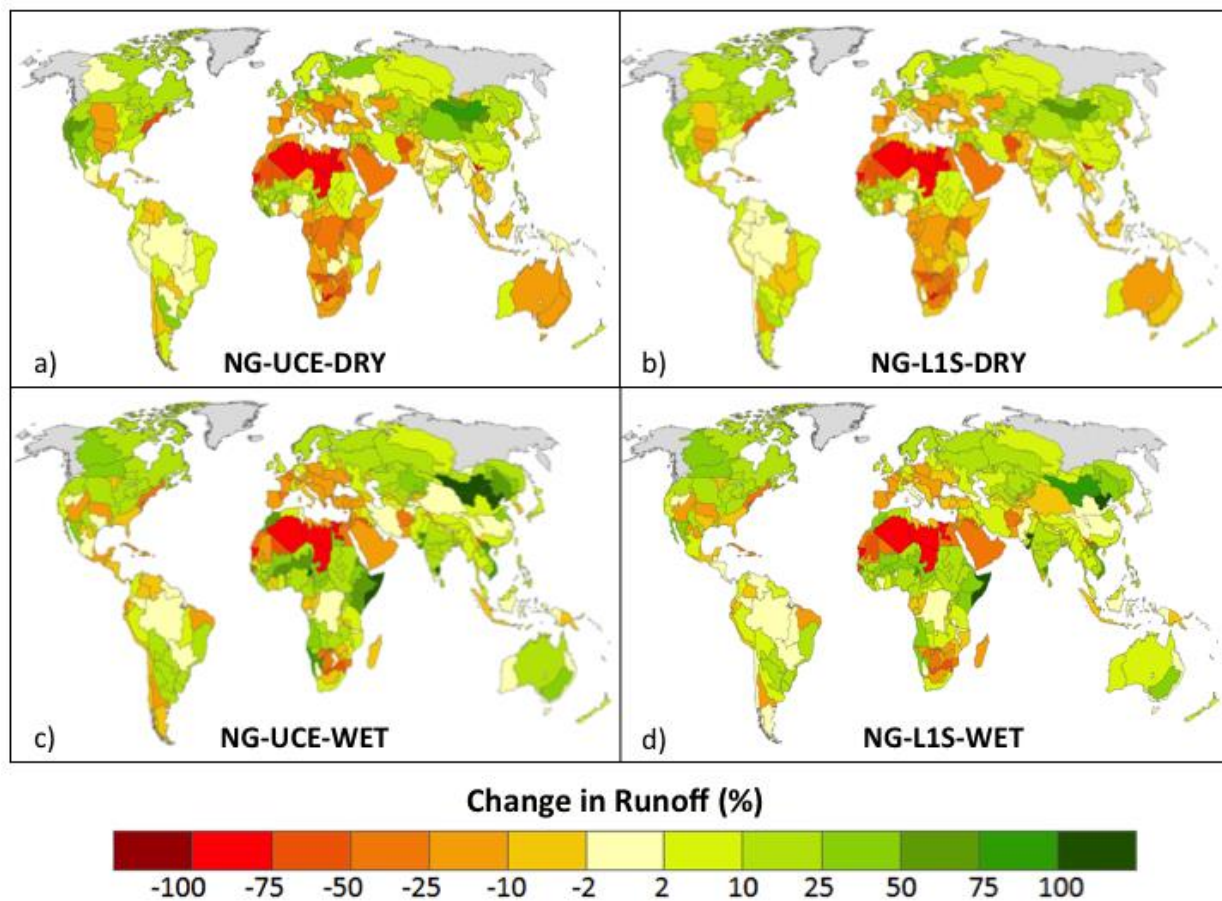
These characterizations are further reflected in the regional changes in the water stress among the ASRs (**Figure 10**). The larger regional difference in WSI trends among the scenarios is between the WET and DRY cases (comparing top and bottom maps in the figure), with smaller impacts seen in the choice between the UCE or L1S emissions scenarios (left and right maps in the figure). The strongest increases in water stress are found in Africa, and the magnitude of these trends are reduced considerably when going from the DRY to WET climate pattern. As noted above, decreases in water stress are found for a number of ASRs with high withdrawal rates (e.g., the U.S. and China), in particular for the DRY cases. These features confirm the effects of weighted-averaging seen in the global WSI trends (seen in Figure 9)

Among the main drivers of water stress, the regional features of runoff resonate strongly with the WSI trends. In particular, the majority of the largest relative decreases in runoff (**Figure 11**) are in African ASRs, and these correspond strongly with increases in WSI (i.e. greater water stress). Additionally, the increases and decreases in runoff seen in many ASRs over Europe and the U.S. show a consistent WSI response. Overall, the geographic texture in these runoff changes is affected notably by the choice of the WET or DRY pattern scenario, and again less than by the choice of emission scenario.



**Figure 10. Changes in ASR Water Stress from Climate Factors.** Maps show percentage changes in decadal averaged ASR water stress index, WSI, from 2001–2010 to 2041–2050. The simulations highlight the effect of climate change only (i.e. the "no growth" scenarios denoted by NG in Table 1) as a result of unconstrained emissions (UCE) and a stabilization policy (L1S), as well as the effect of different regional pattern-change scenarios (WET and DRY). With no growth in the economic factors, these presented water-stress changes are the result of only imposed changes in the climate forcing. Refer to Table 1 and corresponding text for further details regarding the suite of simulations performed.

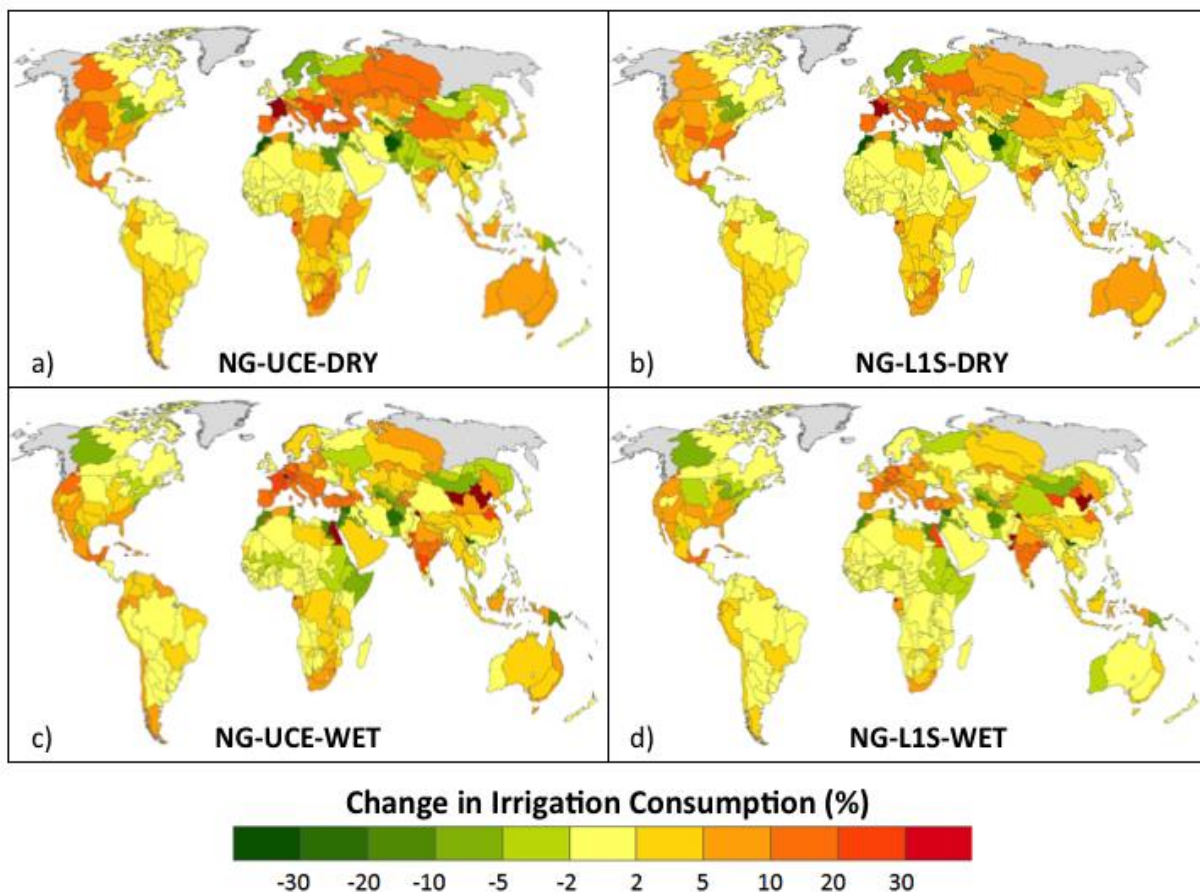
Another driver in the climate-driven trend on water stress is irrigation demand, which is responsive to the trends in precipitation and temperature within the ASR (both of which are modified through the climate change pattern–scaling approach employed). While changes in the irrigation consumption show notable differences in their regional features between the WET and DRY pattern scenario (**Figure 12**), these impacts are less prominent over Africa and more notable over Eurasia, southeast Asia, as well as western parts of North America. The small effect of irrigation requirements on the most stressed areas, like Africa, occurs because the area of irrigated land there is now small (and it is held constant over the simulation period). For most African ASRs, changes in runoff, not irrigation demand, are the main contributor to changes in water stress.



**Figure 11. Changes in ASR Runoff.** Maps show percent changes in decadal averaged ASR runoff from 2001–2010 to 2041–2050. The simulations show the effect of climate change only (i.e. the "no growth" scenarios denoted by NG in Table 1) as a result of unconstrained emissions (UCE) and a stabilization policy (L1S) as well as the effect of different regional pattern-change scenarios (WET and DRY). Refer to Table 1 and corresponding text for further details regarding the suite of simulations performed.

### 3.3 Integrated Projections Including Economic Growth and Climate Change

We consider the combined effect of economic growth and regional climate change (considered separately in the previous sections) on water stress. **Figure 13a** shows the global WSI trends with the ASRs weighted by their total water use, and **Figure 13b** shows the unweighted results. A comparison with **Figure 9**, which shows climate effects only, demonstrates that at global scale economic growth is at least as strong a driver of changes in water stress through 2050 as climate. In all combinations of the emissions and pattern-change scenarios considered (UCE, L1S, WET, and DRY), the magnitude of the global water-stress trend shows at least a doubling compared to the climate-only results (**Figure 9**) by 2050, and for the case of ASR-weighted WET cases (**Figure 13a** versus **Figure 9a**) the trend is reversed in sign (from negative to positive). In all cases, economic growth increases water stress globally.

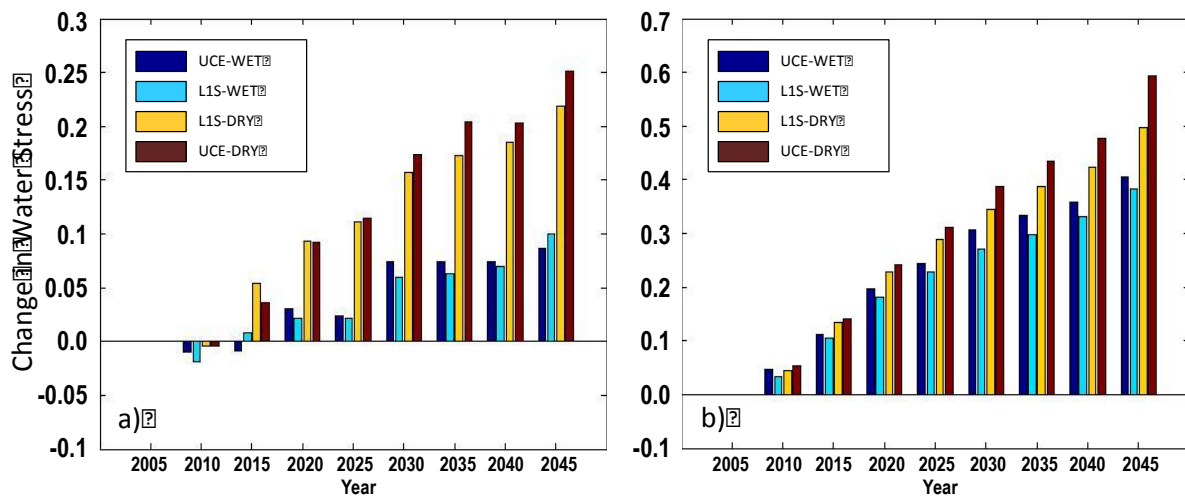


**Figure 12. Changes in Irrigation Requirement from Climate Factors.** Maps show percentage changes in decadal averaged irrigation consumption by ASR from 2001–2010 to 2041–2050 for the ASRs within the IGSM-WRS. With changes in irrigated area the simulations highlight the effect of climate change as a result of unconstrained emissions (UCE) and a stabilization policy (L1S) as well as the effect of different regional pattern-change scenarios (WET and DRY). Refer to Table 1 and corresponding text for further details regarding the suite of simulations performed.

However, consistent with the results considering the climate pattern scenarios alone, the WET pattern case is able to buffer the increase in water stress imposed by increasing water demands from economic growth. This effect shows up most dramatically in the case with ASR weighting by water use (Figure 13a), where the increase in water stress to 2050 in the DRY scenario is more than double that under the WET scenario. The same effect, though much reduced in scale, is seen when the weighting is removed (Figure 13b). As seen previously for the climate-change only results (Fig. 9), the choice of the UCE or L1S policy scenario has a much smaller effect in a simulation limited to 2050. The overall implication of these results is that regional climate change uncertainty is a more influential factor in water stress trends than the global scale differences in the two climate policy scenarios.

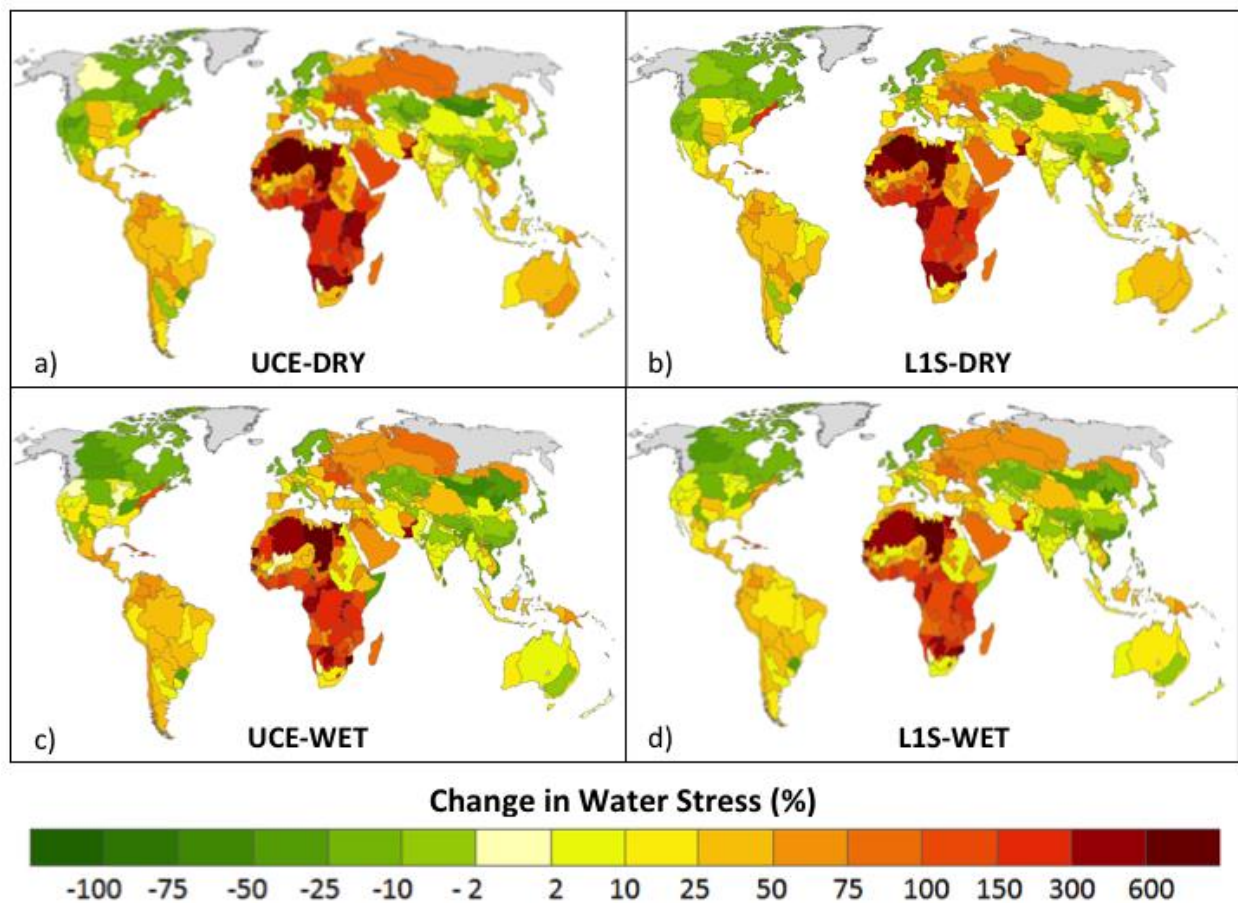
Given these global trends in WSI, it is not surprising that many ASRs see increases in water stress for both of the policy scenarios as well as the regional climate outcomes (**Figure 14**). The

strongest (relative) increases in water stress are seen predominantly in Africa. However, strong relative increases (30% to over 100%) are also found in developed regions over North America and Europe. Due to the strong influence of non-agricultural water demand via socioeconomic growth (Figure 7) on the water-stress trends, differences in the water-stress change (by 2050) as a result of the different climate pattern-change scenarios is not as clearly discernable as that seen in the no growth (NG) case (Figure 10). Nevertheless, the WET pattern provides a buffering effect to the water-stress increases in the eastern U.S., Australia, and throughout Africa and the Middle East. In eastern and Southeast Asia the WET pattern also enhances the reduction in water stress through 2050.



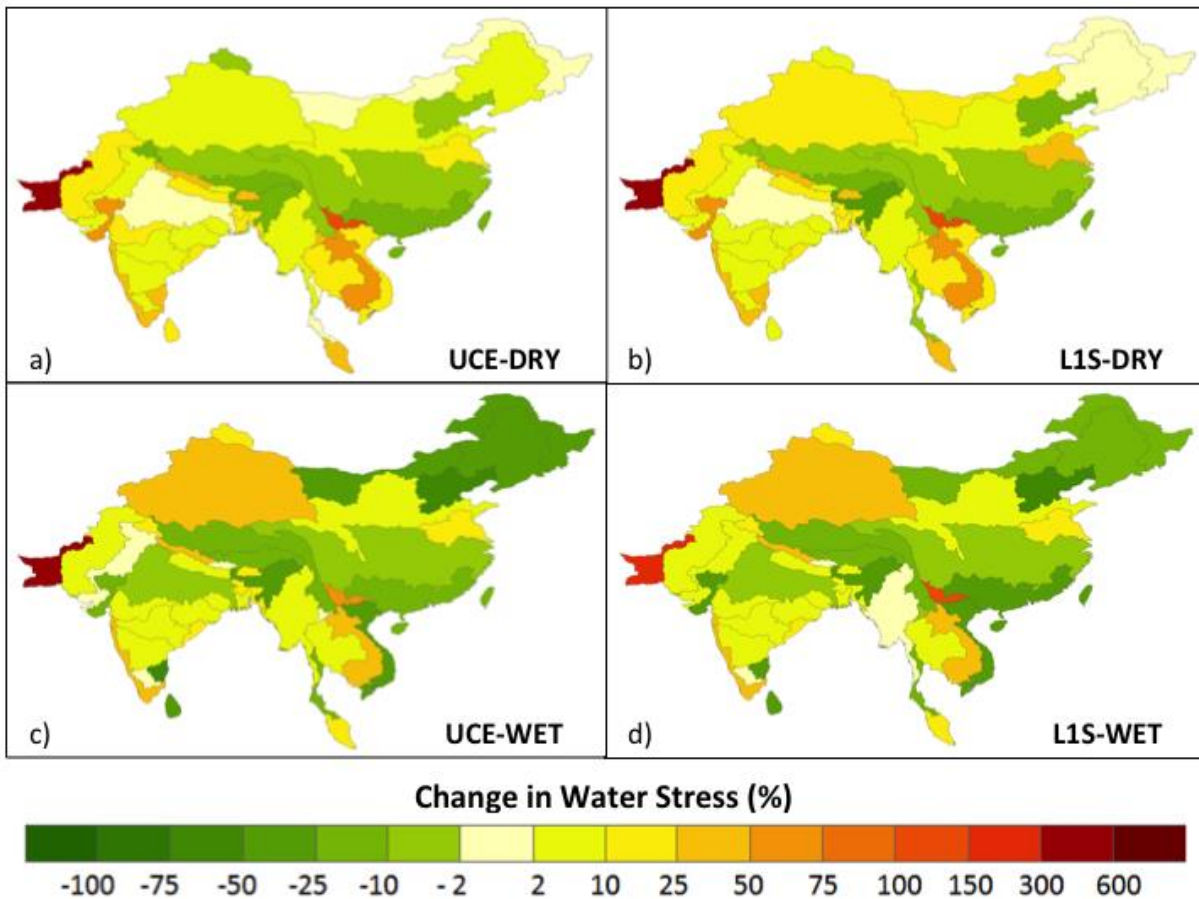
**Figure 13. Trends in Global Water Stress Index (WSI).** Shown is the change in global water stress index, WSI (unitless), obtained as the difference in successive 5-year running means from its 2005–2009 average value. The abscissa labels refer to the starting point of the 5-year running mean result. The global values shown are derived from ASR values that are: a) weighted or b) unweighted by total annual withdrawal. The WSI changes consider growth in human water demands over the period (e.g., Figures 6 and 7) as well as climate change effects (e.g., Figures 8–11) as a result of unconstrained emissions (UCE) and a stabilization policy (L1S) as well as the effect of different regional climate pattern scenarios (WET and DRY). Refer to Table 1 and corresponding text for further details regarding the suite of simulations performed. Note also the difference in vertical scale between the two panels.

Among the more compelling regions is Southeast Asia. In this region, the most prominent features are reduced stress along the Yellow and Xi Jang Rivers in China, and along the Ganges and Bhramaputra basins in India—particularly in the WET case scenarios. These increases in water availability over China and India are encouraging given their high water stress conditions in the contemporary climate and built environment (Figure 5). Conversely, we also find increased water stress in a number of ASRs across India, the Indus River, Vietnam, and eastern China—particularly for the UCE-DRY case. These decreases can be buffered or reversed in the WET pattern scenario.



**Figure 14. Changes in ASR Water Stress Index (WSI).** Maps show changes in decadal averaged ASR water stress from 2001–2010 to 2041–2050. The simulations highlight the effect of climate change as a result of unconstrained emissions (UCE) and a stabilization policy (L1S) as well as the effect of different regional patterns of climate change (WET and DRY). Refer to Table 1 and corresponding text for further details regarding the suite of simulations performed.

Looking closer at the WSI changes at 2050 for Southeast Asia (**Figure 15**), we find that at the ASR levels, there is not a homogeneous regional impact with respect to the global scale hydroclimate characterizations (i.e. WET and DRY cases). In a number of instances, the change in WSI does not consistently follow the WET and DRY characterizations —as determined by the global land-only CMI trends. We find that WSI can increase under the global WET scenario. For example under both the UCE and L1S scenarios, the Tibetan Plateau and Mekong River basins show increased water stress in the WET cases (Figures 15c and 15d). Conversely, the Chang Jiang and Yangtze rivers show decreased water stress under the DRY scenarios (Figures 15a and 15b). These results underscore the caveat that metrics designed to characterize the range of global scale hydroclimate conditions will not consistently capture all regional variations accordingly. Therefore, any risk-based assessment that aims to span the full range of hydroclimate outcomes must carefully consider the domain and metrics chosen.

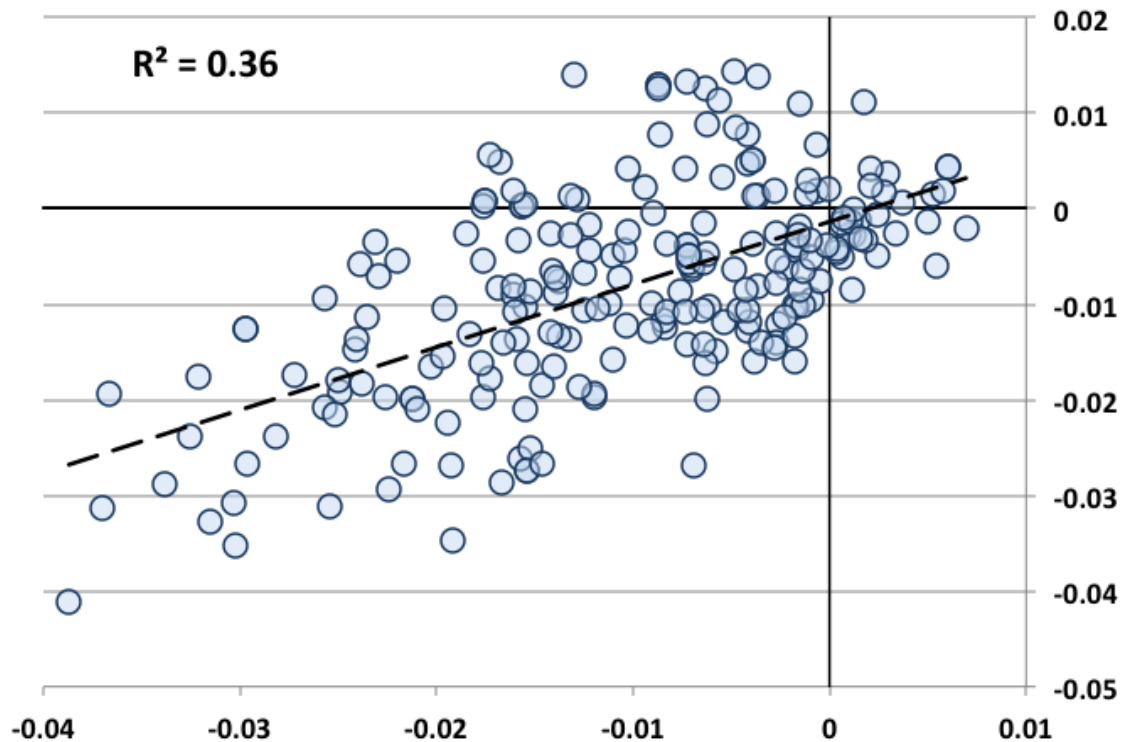


**Figure 15. Changes in Southeast Asia ASR Water Stress (WSI).** Maps show changes in decadal averaged ASR water stress from 2001–2010 to 2041–2050. The simulations highlight the effect of climate change as a result of unconstrained emissions (UCE) and a stabilization policy (L1S) as well as the effect of different regional climate changes (WET and DRY cases) that have been incorporated into the IGSM projections. Refer to Table 1 and corresponding text for further details regarding the suite of simulations performed.

Further analyses were performed to determine if this phenomenon is an artifact of the pattern scaling employed in the IGSM or is a result typical of climate model projections in general.

**Figure 16** presents a regional to global comparison of changes in CMI in 2050 using the CMIP3 and CMIP5 (Taylor et al., 2012) climate-change simulations. We find that for these pooled CMIP climate model results Southeast Asia does not strongly match in magnitude or sign the global land-based averaged midcentury changes in CMI—which is the metric used to determine the WET and DRY pattern scenarios. There is a positively sloping central tendency in their relationship that results from consistent surface air temperature warming, and thus increases in potential evapotranspiration (estimated in the CMI calculation). However, there is considerable scatter in this regional to global comparison (resulting in an  $R^2 = 0.36$ ), and this is largely attributed to differences in precipitation, where localized changes (in magnitude and sign) can vary significantly from region to region. Moreover, approximately 25% of these pooled results

are located in the upper-left and lower-right quadrants of Figure 16, indicating that the signs of the CMI changes between Southeast Asia and the global average are opposite. Overall, these results highlight an important difference between a global index used to characterize a range in hydroclimate pattern shifts and a regional water-resource impact assessment. As we will present in the next section, this distinction may become more pronounced when considering socioeconomic factors.



**Figure 16. Global versus Regional Changes in Climate-Moisture Index.** Shown is a scatter plot of the changes in Climate Moisture Index (CMI, see text for details) estimated from the suite of climate model results from the Coupled Model Intercomparison Projects Phases 3 and 5 (CMIP3 and CMIP5). Model results are pooled from 3 CMIP3 scenarios: A1B, A2, and B1 and as well as 2 CMIP5 scenarios: RCP4.5 and RCP 8.5, for a total of 220 individual results (each plotted as a point on the scatterplot). The change in CMI is calculated as the difference in the 2041–2050 mean minus the 1961–1990 mean. The ordinate values show the changes in CMI averaged over global land areas and the abscissa values display averaged values obtained for the Southeast Asia region depicted in Figure 15.

### 3.4 Population at Risk to Water Stress

An analysis was performed to assess the population that is prone to water-stress exposure under current conditions and future scenarios (Table 1). Each ASR was assigned by its WSI to one of the water-stress classifications as described in section 2 (and shown in Figure 4). All ASRs whose values of WSI classified them in the moderately to extremely exploited (i.e.  $WSI > 0.3$ ) category were deemed as exposed to "water stress" and tabulated according to their population. These tabulations were performed for the Baseline conditions (i.e. Figure 4) and for each of the 11 future scenarios (as depicted in Figures 9 and 13). The populations in the "water-

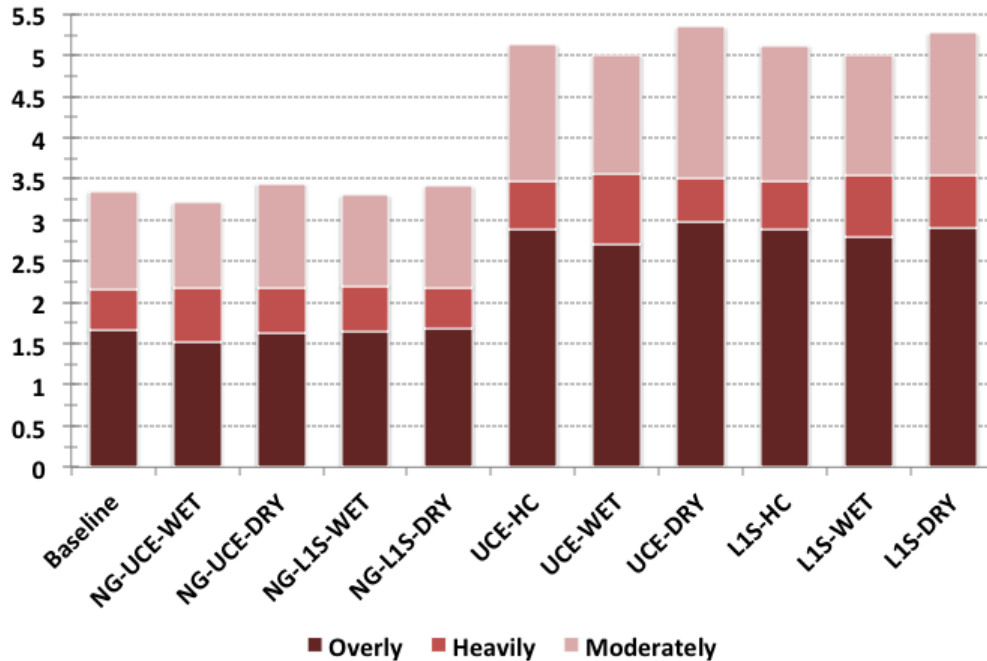


stressed" ASRs were aggregated globally as well by developing and OECD nations and the results are summarized in **Table 3** and **Figure 17**.

**Table 3. Changes in Population Exposed to Water Stress.** Changes in total population (in millions) as well as percentage changes (in parentheses) across ASRs with a WSI greater than 0.3 (denoting moderately through extremely exploited water-stress conditions). Changes were calculated as the difference between the 2001–2010 Baseline conditions (given in parenthesis at each column heading) to the 2041–2050 periods. Results are shown for the simulations to highlight the effects of climate-change only (the NG scenario results) and economic growth separately (the HC scenario results). Refer to Table 1 for the nomenclature regarding the scenarios.

	<b>Globe (3,348)</b>	<b>Developing (2,924)</b>	<b>OECD (424)</b>
<b>NG-UCE-WET</b>	-137 (-4.1%)	-139 (-4.8%)	2 (0.4%)
<b>NG-UCE-DRY</b>	93 (2.8%)	33 (1.1%)	60 (14.1%)
<b>NG-L1S-WET</b>	-49 (-1.5%)	-92 (-3.2%)	43 (10.2%)
<b>NG-L1S-DRY</b>	60 (1.8%)	15 (0.5%)	45 (10.6%)
<b>UCE-HC</b>	1,778 (53.1%)	1,443 (49.4%)	335 (79.0%)
<b>L1S-HC</b>	1,771 (53.0%)	1,443 (49.4%)	328 (77.4%)
<b>UCE-WET</b>	1,648 (49.2%)	1,317 (45.0%)	331 (78.2%)
<b>UCE-DRY</b>	1,993 (59.5%)	1,633 (55.9%)	360 (85.0%)
<b>L1S-WET</b>	1,654 (49.4%)	1,337 (45.7%)	317 (74.8%)
<b>L1S-DRY</b>	1,921 (57.4%)	1,565 (53.5%)	356 (84.1%)

Overall, the impact of socioeconomic growth far exceeds that of climate change in terms of increasing risks to water stress. In absolute terms, the increases in population exposed to "water-stressed" conditions as a result of socioeconomic growth (the two HC-scenario results in Table 3) are at least an order of magnitude higher than any change in the climate-change-only scenarios (the NG scenario results of Table 3). They also show that overwhelmingly for any scenario, at least 80% of the water-stressed population shifts occur within the contemporary developing countries. We find that uncertain climate change, particularly for the UCE case, has a much stronger impact on these population-under-water-stress figures as compared to the range of socioeconomic growth under between the two emission scenarios (UCE and L1S). A difference of 350 million people, globally, between the WET and DRY cases under the UCE scenario is seen as compared to only 7 million between the UCE-HC and L1S-HC scenarios.



**Figure 17. Global Population Exposed to Water Stress.** The stacked bar chart displays the global population (in billions) exposed to water stress for the IGSM-WRS scenarios considered. Water stress is quantified by the Water Stress Indicator (WSI) for each ASR, and each ASR's population is binned according to the WSI categories as depicted in Figure 4. The Baseline result is based on 2001–2010 conditions, while all other scenarios show results for the period 2041–2050. The simulations highlight the effect of climate change and economic growth as a result of unconstrained emissions (UCE) and a stabilization policy (L1S) as well as the effect of different regional patterns of climate change (WET and DRY). Refer to Table 1 and corresponding text for further details regarding the suite of scenario simulations.

Globally, the combined effects of socioeconomic growth and climate change indicate that, by 2050, the population at risk of exposure to at least a moderate level of water stress could reach at least 5 billion people (Figure 17) under all four scenarios (UCE-WET, UCE-DRY, L1S-WET, and L1S-DRY). Further, of this 5 billion people, up to 3 billion could be exposed to overly exploited conditions, which indicates that at the scale of the basins considered in the WRS global framework, the projections indicate that water requirements will consistently exceed the managed surface-water supply. The population at 2050 under this overly exploited water stress are nearly double the current estimate (~1.7 billion people), and among the future scenarios it represents a range of increase between 1.0 and 1.3 billion people—with the range largely attributed to the choice between the WET and DRY cases (Figure 17). As noted above, the impact of climate policy does very little to buffer these increases (by comparing, for example, the UCE-HC to the L1S-HC results). Though the effect is small, all WET cases show the reduction in the total population under water stress, most notably for the UCE-WET scenario—which can reduce the global population under overly exploited water stress by approximately 250 million as compared to the UCE-DRY case.

In considering these population-under-stress projections, we find that some of the largest increases in population (**Table 4**) occur in areas that are already under water stress, in particular, India, the Middle East (or MES region of EPPA), and northern Africa (Figures 3 and 5). The total projected population increases within these water-stressed regions, approximately 1.8 billion, could account for a substantial portion (up to 90%) of the nearly 2 billion people increase in water-stressed populations shown in Figure 17. A closer inspection indicates that given the increasing trends in WSI over the Middle East across all scenarios (Figure 14) and that none of the decreases in WSI seen over India are enough to diminish its water-stressed condition—all of the additional 660 million people projected to live in these regions (by 2050) will be exposed to water stress.

**Table 4.** Global Population. Shown are the 2010 population, projections at 2050 (in millions), as well as absolute and percent changes (between 2010 and 2050) for the EPPA regions (denoted in Figure 2). Although only the 2010 and 2050 figures are shown, population projections were applied in the L1S and UCE scenarios (denoted in Table 1) for every year of the WRS runs in order to determine trends in non-agricultural water demands. For the no-growth (NG) runs, population was held fixed at the 2010 values.

Major Regions	Region	Population (Millions)			
		2010	2050	2050–2010 Change	2050–2010 % Change
<b>Developed</b>	<b>ANZ</b>	38.58	59.82	21.24	55.0
	<b>CAN</b>	35.35	47.86	12.51	35.39
	<b>ROE</b>	236.92	270.8	33.88	14.3
	<b>EUR</b>	538.37	582.13	43.76	8.1
	<b>JPN</b>	134.53	124.45	-10.08	-7.5
	<b>USA</b>	309.35	399.8	90.45	29.2
<b>Other G20</b>	<b>CHN</b>	1,366.85	1,404.45	37.6	2.75
	<b>RUS</b>	147.1	133.7	-13.4	-9.1
	<b>BRA</b>	197.83	237.89	40.06	20.2
	<b>IND</b>	1,232.77	1,736.23	503.46	40.8
	<b>MEX</b>	114.94	152.14	37.2	32.3
<b>Developing</b>	<b>AFR</b>	1,026.54	2,213.97	1,187.43	115.7
	<b>ASI</b>	488.41	646.15	157.74	32.3
	<b>LAM</b>	284.61	400.96	116.35	40.9
	<b>MES</b>	217.05	379.29	162.24	74.5
	<b>REA</b>	619.09	883.99	264.9	42.8
<b>Global Total</b>		6,988.29	9,673.63	2,685.34	33.0

The situation for Africa is not as straightforward, but is still of considerable concern. The contemporary water-stress estimate (Figure 5) shows that much of equatorial and subtropical Africa is experiencing only slight water stress conditions. However, the large population increase contributes to the substantial growth in non-agricultural water demands (Figure 7), and combined

with the modest GDP growth (Table 2) and increases in irrigation consumption, particularly under the DRY scenarios, all of these regions in Africa experience increases in water stress that are large enough, in most cases, to be moved into the water-stressed categories shown in Figure 17. As a result, almost all of the additional 1.2 billion people (Table 4) are introduced into a water-stressed environment. In a similar fashion, China also presents an environment that is poised for expansive increase in water-stress, given the large portion (over 50%) of its population in ASRs currently experiencing only slightly-to-moderately water-stressed conditions (Figures 3 and 5). These regions include the Xi Jang and Yangtze basins across southern China. However, in the scenarios considered, not only is China's population increase small compared to most EPPA regions (Table 4), but these basins experience decreases in WSI and thus the population-under-stress increases are somewhat limited (less than 200 million)—relative to India, Africa, and the Middle East. Nevertheless, the aforementioned caveat concerning the representativeness of the WET and DRY cases, determined by a *global* moisture index, as representing the full range of hydroclimate outcomes for this region must be taken into account in a more comprehensive fashion. There may exist a number of drier outcomes for this region (not captured by the global CMI assessment) that would present a risk of these basins being pushed into a stressed environment. Additionally, the population and GDP growth scenarios considered are limited (due to computational demands) compared to the more comprehensive treatment of uncertainty provided by the IGSM (e.g., Webster et al., 2012). In light of these issues, ongoing work with the IGSM-WRS is addressing these challenges (focused over Southeast Asia) in order to provide a more comprehensive risk-based assessment of future water-stress for any region on interest.

## **5. DISCUSSION AND CLOSING REMARKS**

This study has employed the IGSM-WRS framework aimed at assessing the fate of managed water systems, depicted by 282 large basins across the globe. A suite of experiments was performed to assess the individual effects of socioeconomic growth and (uncertain) regional climate change over the coming decades. Additional experiments were also performed combining these drivers as well as considering two possible emissions scenarios: one conveying an unconstrained emissions pathway and the other a pathway to achieve stabilization of greenhouse gas concentrations by the end of the 21<sup>st</sup> century. Through these numerical experiments, we have quantified the trends over the coming decades (through 2050) in water stress, defined as a ratio of total water requirements over the available surface flow (from within-basin and upstream sources) across the network of managed, large water basins. Overall, the results highlight the substantial influence of socioeconomic growth on the global patterns of water stress, particularly in developing nations. Additionally, the factors that determine the sign and magnitude of water-stress response vary between major economic and developing regions. From the scenarios considered, we find that water-stress changes within developed nations are more sensitive to climate drivers, whereas developing countries are far more responsive to socioeconomic growth. In addition, the results imply that the greatest risks to regions facing

future water-stress may not be captured by extreme outcomes from global assessments of climate scenarios, but rather by regional extremes occurring within a subset of climate-model projections

Geographically, a number of salient results were found. By 2050, economic growth and population change alone may lead to an additional 1.8 billion people globally (a 53% increase) living in regions with high water stress. Of this additional 1.8 billion people, 80% are found in nations that are currently developing countries. In comparison, climate-change impacts on the current population under a globally drier scenario may lead to an increase of 93 million people (a 2.8%) living in regions with high water stress, with the majority (60 million) of these located in developed nations. Under a globally wet scenario, climate change can lead to appreciable decreases (compared to the increases in the dry case) in water stress with an estimated 139 million fewer people under stress; however these decreases are seen primarily in developed nations. Combined, the suite of these projections estimates that by 2050, as many as 5.0 of the 9.7 billion people (or 52% of the global population) in the world may be living under at least moderately stressed water-resource conditions. Moreover, within this 5.0 billion is a 1.0 to 1.3 billion increase of the world's 2050 projected population living in regions with overly exploited water conditions—where total potential water requirements will consistently exceed surface-water supply. Under the context of the WRS model framework, this would imply that adaptive measures would be taken to meet these surface-water shortfalls and would include: water-use efficiency, reduced and/or redirected consumption, recurrent periods of water emergencies or curtailments, groundwater depletion, additional interbasin transfers, and overdraw from flow intended to maintain environmental requirements.

These populations-under-stress projections provide additional insights and also underscore some of our aforementioned findings. First and foremost, the strongest driver in these projections is the fact that a large portion of the population trends implemented in this study place people in basins that are already under water stress, most notably India, Northern Africa, and the Middle East. Further, the range of socioeconomic trends that result from the emissions policies considered has little effect on the additional populations exposed to water stress. However, on a global scale, the range and extent of possible climate-pattern changes can play a secondary role to the effects of socioeconomic growth. As previously noted, we found that water-stress changes were more sensitive, in developed nations, to the range of regional climate change. However, due to the higher populations (as well as their changes) in developing nations as compared to developed, we find that their sensitivity for these population-based water-stress metrics are now quite comparable. There may very well be regional-to-local hotspots that amplify (or reverse) these comparative assessments. However, the scale of the basins (282 for the globe) employed for this particular study precludes an assessment as to the extent of these instances. Below we discuss development and future work aimed to address this and other issues.

Several features in the design of this study must be noted that not only place the scope of the interpretations made, but also serve as guidance to further numerical experimentation and policy assessment. First, these numerical experiments consider how water stress would change under the contemporary built and managed environment. This is an important step prior to undertaking

feasibility studies—to first identify where these risks may emerge under the current landscape and the underlying causes of these increased stresses. As such, we have yet to consider changes in infrastructure (e.g., energy systems), uncertain or alternative population projections, installed water-storage capacity, cultivated land use, or irrigated area. Such adaptive measures will play an important role in preparing and/or avoiding future risks. Additionally, we've noted the fact that our characterization of (global) WET and DRY pattern cases may not necessarily align with the regional water-stress impact response (i.e. it could be opposite in sign). Any global analysis of the risk of environmental change to water resources must be carried out as a collection of regional risk assessments that are then collated to a global coverage. In the global analysis, tradable commodities that consume water, such as food and agricultural products or energy (hydro and biofuels), must also be tracked to capture the simultaneous regional difference in impacts that may be lessened or exasperated by global trade.

Given these considerations, this model can next be used to focus on specific areas of the globe—e.g., east Asia, southern Africa, and the western U.S.—to conduct more detailed simulations of future conditions and to undertake more rigorous assessments of future risks to water systems. For example, regional detail, such as water-use law and other restrictions on existing or planned inter-basin transfers, can be introduced into the water system management (WSM) component of the IGSM-WRS model. Adjustments in irrigated acreage, or in cropping patterns, can also be explored. The impact of flexible design in future water systems can also be assessed. Future analyses will also benefit from increased spatial scales of ASRs and further disaggregation of the non-agricultural water demand—especially in energy. To assess risks, large ensembles can also be performed, leveraging off the IGSM framework, that capture the spectrum of regional climate response, the range of climate policies, as well as the possible integrated changes in cultivated and irrigated lands. Combining all these elements in a consistent, integrated modeling framework presents a substantial computational undertaking but will ultimately result in persuasive and actionable insights for strategic planning and risk management in the face of unavoidable and preventable global change.

### **Acknowledgments**

The Joint Program on the Science and Policy of Global Change is funded by the U.S. Department of Energy, Office of Science under grants DE-FG02-94ER61937, DE-FG02-93ER61677, DE-FG02-08ER64597, and DE-FG02-06ER64320; the U.S. Environmental Protection Agency under grants XA-83344601-0, XA-83240101, XA-83042801-0, PI-83412601-0, RD-83096001, and RD-83427901-0; the U.S. National Science Foundation under grants SES-0825915, EFRI-0835414, ATM-0120468, BCS-0410344, ATM-0329759, and DMS-0426845; the U.S. National Aeronautics and Space Administration under grants NNX07AI49G, NNX08AY59A, NNX06AC30A, NNX09AK26G, NNX08AL73G, NNX09AI26G, NNG04GJ80G, NNG04GP30G, and NNA06CN09A; the U.S. National Oceanic and Atmospheric Administration under grants DG1330-05-CN-1308, NA070AR4310050, and NA16GP2290; the U.S. Federal Aviation Administration under grant 06-C-NE-MIT; the Electric Power Research Institute under grant EP-

P32616/C15124; and a consortium of 40 industrial and foundation sponsors (for the complete list see <http://globalchange.mit.edu/sponsors/all>).

## 5. REFERENCES

- Arnell, N.W. and S.N. Gosling, 2013: The impacts of climate change on river flow regimes at the global scale. *Journal of Hydrology*, 486: 351–364, doi: 10.1016/j.jhydrol.2013.02.010.
- Blanc, E., K. Strzepek, C.A. Schlosser, H. Jacoby, A. Gueneau, C. Jant, S. Rausch, and J. Reilly, 2013: Analysis of U.S. water resources under climate change, MIT JPSPGC Report 239, May, 43p ([http://globalchange.mit.edu/files/document/MITJPSPGC\\_Rpt239.pdf](http://globalchange.mit.edu/files/document/MITJPSPGC_Rpt239.pdf)).
- Clarke, L., J. Edmonds, H. Jacoby, H. Pitcher, J. Reilly, R. Richels, 2007: *Scenarios of Greenhouse Gas Emissions and Atmospheric Concentrations. Sub-report 2.1A of Synthesis and Assessment Product 2.1 by the U.S. Climate Change Science Program and the Subcommittee on Global Change Research*. Department of Energy, Office of Biological & Environmental Research, Washington, D.C., USA, 154 pp.
- Döll, P. and J. Zhang, 2010: Impact of climate change on freshwater ecosystems: A global-scale analysis of ecologically relevant river flow alterations. *Hydrology and Earth System Sciences*, 5(14): 783–799.
- Fung, F., A. Lopez, and M. New, 2011: Water availability in +2 degrees C and +4 degrees C worlds. *Philosophical Transactions of the Royal Society A-Mathematical Physical and Engineering Sciences*, 369(1934): 99–116.
- Gao, X., C.A. Schlosser, A. Sokolov, K.W. Anthony, Q. Zhuang, and D. Kicklighter, 2013: Permafrost degradation, methane and their biogeochemical climate-warming feedback, *Environ. Res. Letters* 8(3): 035014.
- Gosling, S.N., D. Bretherton, K. Haines, and N.W. Arnell, 2010: Global hydrology modelling and uncertainty: running multiple ensembles with a campus grid. *Phil. Trans. of the Royal Society A- Mathematical Physical and Engineering Sciences*, 368(1926): 4005–4021.
- Hirabayashi, Y., S. Kanae, S. Emori, T. Oki, and M. Kimoto, 2008: Global projections of changing risks of floods and droughts in a changing climate. *Hydrolog. Sci. Jour.*, 53(4): 754–772.
- Meehl, G.A., C. Covey, T. Delworth, M. Latif, B. McAvaney, J.F.B. Mitchell, R.J. Stouffer, and K.E. Taylor, 2007: The WCRP CMIP3 multi-model dataset: A new era in climate change research. *Bull. Amer. Met. Soc.*, 88: 1383–1394.
- Okazaki, A., J.F.Y. Pat, K. Yoshimura, M. Watanabe, M. Kimoto, and T. Oki, 2012 :Changes in flood risk under global warming estimated using MIROC5 and the discharge probability index. *J. Met. Soc. Japan*, 90(4): 509–524.
- Oleson, K.W., Y. Dai, G. Bonan, M. Bosilovich, R. Dickinson, P. Dirmeyer, F. Hoffman, P. Houser, S. Levis, G.-Y. Niu, P. Thornton, M. Vertenstein, Z.-L. Yang, and X. Zeng, 2004: *Technical description of the Community Land Model (CLM)*. National Center for Atmospheric Research Tech. Note NCAR/TN-461+STR, 173 pp.
- Rosegrant, M., C. Ringler, S. Msangi, T. Sulser, T. Zhu and S. Cline, 2008: International Model for Policy Analysis of Agricultural Commodities and Trade (IMPACT): Model Description, International Food Research Institute: Washington, D.C.

- Schlosser, C.A., X. Gao, K. Strzepek, A. Sokolov, C.E. Forest, S. Awadalla, and W. Farmer, 2012: Quantifying the likelihood of regional climate change: A hybridized approach. *Journal of Climate*, 26(10): 3394–3414, doi: 10.1175/JCLI-D-11-00730.1.
- Schewe, J., J. Heinke, D. Gerten, I. Haddeland, N.W. Arnell, D.B. Clark, R. Dankers, S. Eisner, B. Fekete, S.N. Gosling, H. Kim, X. Liu, Y. Masaki, F.T. Portmann, Y. Satoh, F. Stacke, Q. Tang, Y. Wada, D. Wisser, T. Albrecht, K. Frieler, F. Piontek, and L. Warszawski, 2013: Multi-model assessment of water scarcity under climate change. *Proc. Nat. Acad. Sci.—United States of America*, submitted.
- Smakhtin, V., C. Revanga, and P. Doll, 2005: Taking into account environmental water requirements in global scale water resources assessments. (<http://www.iwmi.cgiar.org/assessment/files/pdf/publications/researchreports/carr2.pdf>).
- Sokolov, A.P., C.A. Schlosser, S. Dutkiewicz, S. Paltsev, D.W. Kicklighter, H.D. Jacoby, R.G. Prinn, C.E. Forest, J.M. Reilly, C. Wang, B. Felzer, M.C. Sarofim, J. Scott, P.H. Stone, J.M. Melillo, and J. Cohen, 2005: The MIT Integrated Global System Model (IGSM) Version 2: Model description and baseline evaluation. MIT JPSPGC Report 124, July, 40 p. ([http://globalchange.mit.edu/files/document/MITJPSPGC\\_Rpt124.pdf](http://globalchange.mit.edu/files/document/MITJPSPGC_Rpt124.pdf)).
- Strzepek, K., and C. A. Schlosser, 2010: Climate change scenarios and climate data, *Development and Climate Change World Bank Discussion Paper #9* (October 2010), 26 p.
- Strzepek, K., C.A. Schlosser, A. Gueneau, X. Gao, É. Blanc, C. Fant, B. Rasheed, and H. Jacoby, 2013: Modeling water resource systems under climate change: IGSM-WRS. *J. Adv. Earth Model Sys.* 5(3): 638–653.
- Tang, Q.H. and D.P. Lettenmaier, 2012: 21<sup>st</sup> century runoff sensitivities of major global river basins. *Geophys. Res. Lett.*, 39: L06403.
- Taylor, K.E., R.J. Stouffer, and G.A. Meehl, 2012: An Overview of CMIP5 and the experiment design. *Bull. Amer. Meteor. Soc.*, 93, 485–498, doi:10.1175/BAMS-D-11-00094.1.
- UN [United Nations], 2013: *World Population Prospects: The 2012 Revision*, Population Division, United Nations Department of Economic and Social Affairs (<http://esa.un.org/unpd/wpp/Excel-Data/population.htm>).
- Vörösmarty, C. J., P. Green, J. Salisbury, and R. B. Lammers 2000: Global water resources: Vulnerability from climate change and population growth. *Science*, 289: 284–288.
- Wada, Y., L.P.H. van Beek, D. Viviroli, H.H. Dürr, R. Weingartner, and M.F.P. Bierkens, 2011: Global monthly water stress: 2. Water demand and severity of water stress. *Water Resource Research*, 47.
- Webster, M.D., A.P. Sokolov, J.M. Reilly, C. Forest, S. Paltsev, C.A. Schlosser, C. Wang, D.W. Kicklighter, M. Sarofim, J.M. Melillo, R.G. Prinn and H.D. Jacoby, 2012: Analysis of climate policy targets under uncertainty. *Climatic Change*, 112(3–4): 569–583.
- Willmott, C.J., and J.J. Feddema, 1992: A more rational climatic moisture index. *Prof. Geographer*, 1: 84–88, doi: 10.1111/j.0033-0124.1992.00084.x.



## REPORT SERIES of the MIT Joint Program on the Science and Policy of Global Change

FOR THE COMPLETE LIST OF JOINT PROGRAM REPORTS:  
<http://globalchange.mit.edu/pubs/all-reports.php>

- 208. Influence of Air Quality Model Resolution on Uncertainty Associated with Health Impacts** *Thompson and Selin* December 2011
- 209. Characterization of Wind Power Resource in the United States and its Intermittency** *Gunturu and Schlosser* December 2011
- 210. Potential Direct and Indirect Effects of Global Cellulosic Biofuel Production on Greenhouse Gas Fluxes from Future Land-use Change** *Kicklighter et al.* March 2012
- 211. Emissions Pricing to Stabilize Global Climate** *Bosetti et al.* March 2012
- 212. Effects of Nitrogen Limitation on Hydrological Processes in CLM4-CN** *Lee & Felzer* March 2012
- 213. City-Size Distribution as a Function of Socio-economic Conditions: An Eclectic Approach to Down-scaling Global Population** *Nam & Reilly* March 2012
- 214. CliCrop: a Crop Water-Stress and Irrigation Demand Model for an Integrated Global Assessment Modeling Approach** *Fant et al.* April 2012
- 215. The Role of China in Mitigating Climate Change** *Paltsev et al.* April 2012
- 216. Applying Engineering and Fleet Detail to Represent Passenger Vehicle Transport in a Computable General Equilibrium Model** *Karplus et al.* April 2012
- 217. Combining a New Vehicle Fuel Economy Standard with a Cap-and-Trade Policy: Energy and Economic Impact in the United States** *Karplus et al.* April 2012
- 218. Permafrost, Lakes, and Climate-Warming Methane Feedback: What is the Worst We Can Expect?** *Gao et al.* May 2012
- 219. Valuing Climate Impacts in Integrated Assessment Models: The MIT IGSM** *Reilly et al.* May 2012
- 220. Leakage from Sub-national Climate Initiatives: The Case of California** *Caron et al.* May 2012
- 221. Green Growth and the Efficient Use of Natural Resources** *Reilly* June 2012
- 222. Modeling Water Withdrawal and Consumption for Electricity Generation in the United States** *Strzepek et al.* June 2012
- 223. An Integrated Assessment Framework for Uncertainty Studies in Global and Regional Climate Change: The MIT IGSM** *Monier et al.* June 2012
- 224. Cap-and-Trade Climate Policies with Price-Regulated Industries: How Costly are Free Allowances?** *Lanz and Rausch* July 2012.
- 225. Distributional and Efficiency Impacts of Clean and Renewable Energy Standards for Electricity** *Rausch and Mowers* July 2012.
- 226. The Economic, Energy, and GHG Emissions Impacts of Proposed 2017–2025 Vehicle Fuel Economy Standards in the United States** *Karplus and Paltsev* July 2012
- 227. Impacts of Land-Use and Biofuels Policy on Climate: Temperature and Localized Impacts** *Hallgren et al.* August 2012
- 228. Carbon Tax Revenue and the Budget Deficit: A Win-Win Solution?** *Sebastian Rausch and John Reilly* August 2012
- 229. CLM-AG: An Agriculture Module for the Community Land Model version 3.5** *Gueneau et al.* September 2012
- 230. Quantifying Regional Economic Impacts of CO<sub>2</sub> Intensity Targets in China** *Zhang et al.* September 2012
- 231. The Future Energy and GHG Emissions Impact of Alternative Personal Transportation Pathways in China** *Kishimoto et al.* September 2012
- 232. Will Economic Restructuring in China Reduce Trade-Embodied CO<sub>2</sub> Emissions?** *Qi et al.* October 2012
- 233. Climate Co-benefits of Tighter SO<sub>2</sub> and NO<sub>x</sub> Regulations in China** *Nam et al.* October 2012
- 234. Shale Gas Production: Potential versus Actual GHG Emissions** *O'Sullivan and Paltsev* November 2012
- 235. Non-Nuclear, Low-Carbon, or Both? The Case of Taiwan** *Chen* December 2012
- 236. Modeling Water Resource Systems under Climate Change: IGSM-WRS** *Strzepek et al.* December 2012
- 237. Analyzing the Regional Impact of a Fossil Energy Cap in China** *Zhang et al.* January 2013
- 238. Market Cost of Renewable Jet Fuel Adoption in the United States** *Winchester et al.* January 2013
- 239. Analysis of U.S. Water Resources under Climate Change** *Blanc et al.* February 2013
- 240. Protection of Coastal Infrastructure under Rising Flood Risk** *Lickley et al.* March 2013
- 241. Consumption-Based Adjustment of China's Emissions-Intensity Targets: An Analysis of its Potential Economic Effects** *Springmann et al.* March 2013
- 242. The Energy and CO<sub>2</sub> Emissions Impact of Renewable Energy Development in China** *Zhang et al.* April 2013
- 243. Integrated Economic and Climate Projections for Impact Assessment** *Paltsev et al.* May 2013
- 244. A Framework for Modeling Uncertainty in Regional Climate Change** *Monier et al.* May 2013
- 245. Climate Change Impacts on Extreme Events in the United States: An Uncertainty Analysis** *Monier and Gao* May 2013
- 246. Probabilistic Projections of 21<sup>st</sup> Century Climate Change over Northern Eurasia** *Monier et al.* July 2013
- 247. What GHG Concentration Targets are Reachable in this Century?** *Paltsev et al.* July 2013
- 248. The Energy and Economic Impacts of Expanding International Emissions Trading** *Qi et al.* August 2013
- 249. Limited Sectoral Trading between the EU ETS and China** *Gavard et al.* August 2013
- 250. The Association of Large-Scale Climate Variability and Teleconnections on Wind Resource over Europe and its Intermittency** *Kriesche and Schlosser* September 2013
- 251. Regulatory Control of Vehicle and Power Plant Emissions: How Effective and at What Cost?** *Paltsev et al.* October 2013
- 252. Synergy between Pollution and Carbon Emissions Control: Comparing China and the U.S.** *Nam et al.* October 2013
- 253. An Analogue Approach to Identify Extreme Precipitation Events: Evaluation and Application to CMIP5 Climate Models in the United States** *Gao et al.* November 2013
- 254. The Future of Global Water Stress: An Integrated Assessment** *Schlosser et al.* January 2014