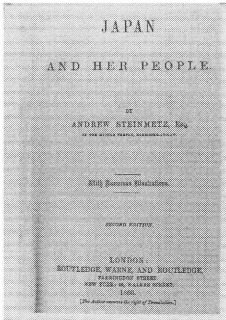


Japan and her people

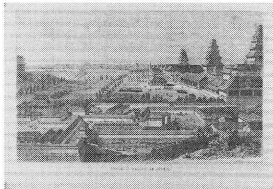
著者	Steinmetz A.
雑誌名	日文研所蔵欧文図書所載 海外日本像集成 第1冊 : 1854 ~ 1870
巻	1
ページ	91-93
発行年	2007-03-30
その他のタイトル	日本とその住民
URL	http://doi.org/10.15055/00002023



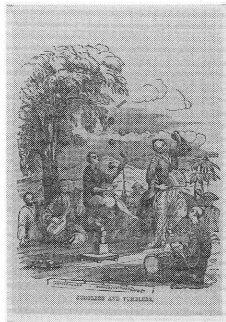
Japan and her people
Steinmetz, A.

日本とその住民
スタインメッツ, A.

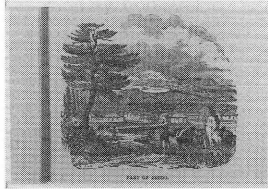
00006715



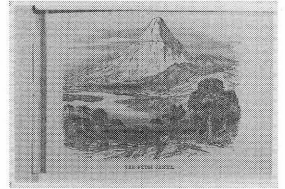
Imperial palace at Jeddo
江戸の皇帝の宮殿



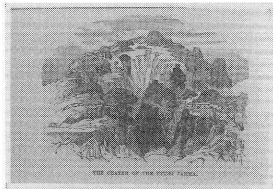
Jugglers and tumblers
曲芸師と軽業師



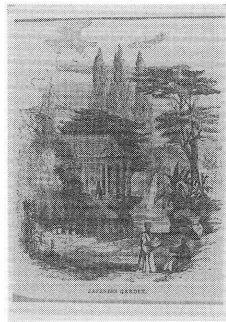
Part of Jeddo
江戸の一部分



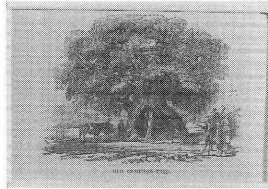
The Fudsi Jamma
富士山



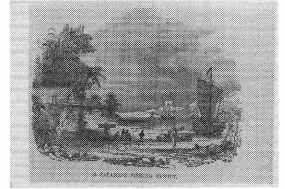
The crater of the Fousi Jamma
富士山の噴火口



Japanese garden
日本庭園



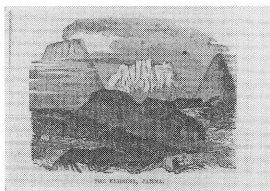
Old camphor-tree
楠の老木



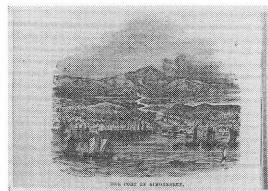
A Japanese fishing family
日本の漁家



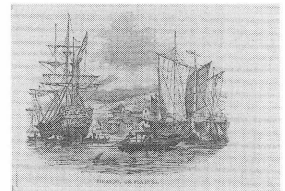
Japanese fishermen
日本の漁師



The Kirisima, Jamma
霧島, 山



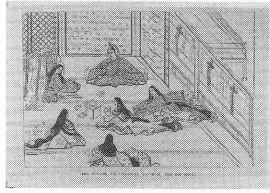
The port of Simoneseke
下関港



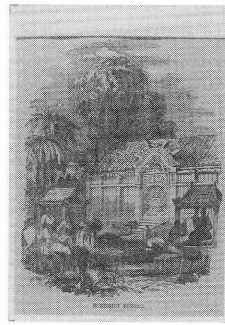
Firando, or Fiaango
フィランド, あるいはフィア
ゴ[平戸か]



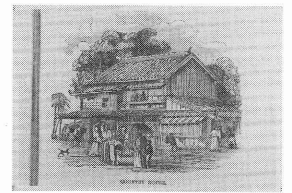
A vassal prince
封建君主[大名か]



The Mikado, or spiritual
Emperor and his wives
ミカド、あるいは神聖な皇帝、
そしてその妻



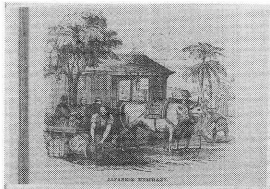
Buddhist temple
仏教の寺



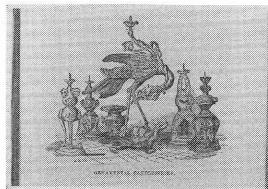
Country house
地方の家



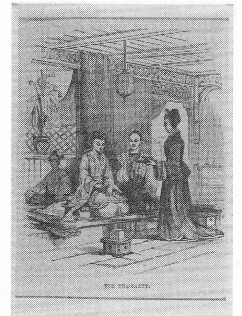
An equestrian party
乗馬の一隊



Japanese merchant
日本の商人



Ornamental candlesticks
装飾用のろうそく立て



The tea-party
お茶会



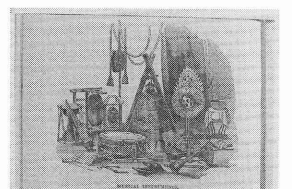
The Siogoun, or temporal
Emperor and his wife
将軍、あるいは世間的な皇帝、
そして彼の妻



Family worship
家族礼拝



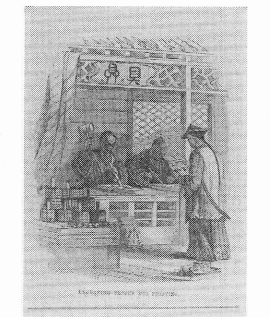
Representation of domestic life
in Japan
日本の家庭生活の描写



Musical instruments
楽器



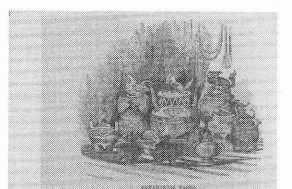
Japanese wrestlers
日本の力士



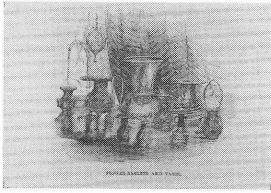
Engraving brocks for printing
印刷のための木彫



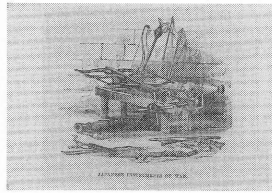
Japanese lady's boudoir
日本の上流婦人の居間



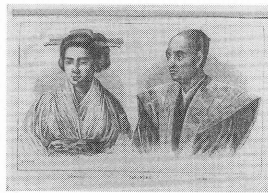
Ornamental vases
装飾花瓶



Flower-baskets and vases
花籠と花瓶



Japanese instruments or war
日本の武具

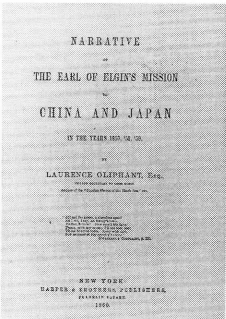


Japanese male and female
日本人男性[右]と女性[左]



Nagasaki
長崎

1860



*Narrative of the Earl of Elgin's mission
to China and Japan*
Oliphant, L.

エルギン伯爵の中国・日本使節録
オリファント, L.

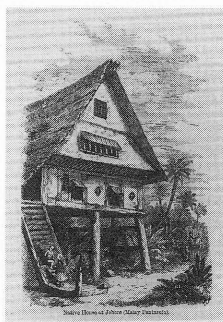
00019821



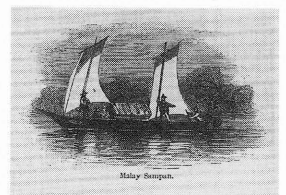
A winter scene in Japan. From
a Japanese drawing.
日本の冬景色、日本の画より



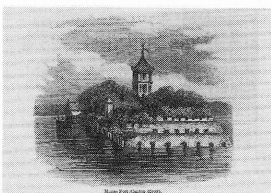
Scene on the Tubrao River
(Malay Peninsula).
タブラオ川の光景(マレー半島)



Native House at Johore (Malay
Peninsula).
ジョホールの原住民の家(マ
レー半島)



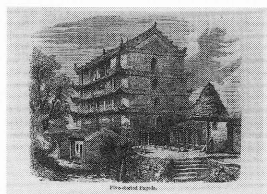
Malay Sampan.
マレーのサンパン



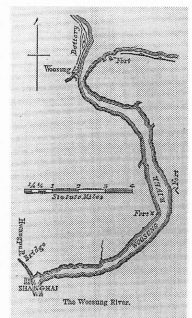
Macao Fort (Canton River).
マカオの要塞(珠江)



Mestizos.
混血人



Five-storyed Pagoda.
五重の塔



The Woosung River.
呉淞川