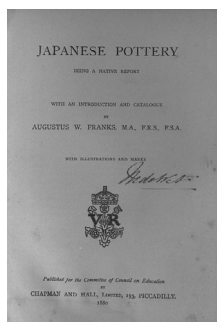


Japanese pottery

著者	Franks A. W.
雑誌名	日文研所蔵欧文図書所載 海外日本像集成 第3冊 : 1878 ~ 1880
巻	3
ページ	205-206
発行年	2013-03-30
その他のタイトル	日本の陶器類
URL	http://doi.org/10.15055/00001835



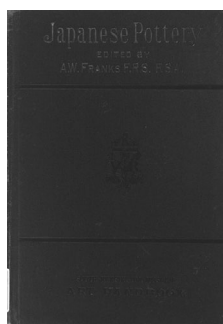
Japanese pottery

Franks, A. W.

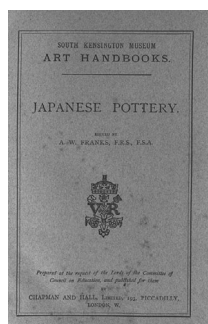
日本の陶器類

フランクス, A. W.

00005130



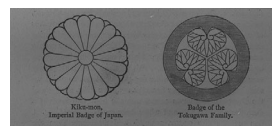
[Cover]
[表紙]



[Added title page]
[副標題紙]



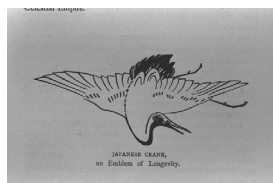
Bamboo whisk and jointed spoon.
竹の泡立器[茶筌]と連結したスプーン[茶杓]



Kiku-mon, Imperial Badge of Japan. Badge of the Tokugawa family.
菊紋, 日本の天皇のしるし 徳川家のしるし[家紋]



Kiri-mon, the badge of the Mikado's family.
桐紋, ミカド[天皇]家のしるし



Japanese crane, an emblem of longevity.
日本の鶴, 長命の象徴

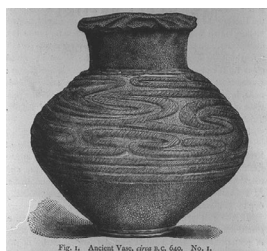


Fig.1. Ancient vase, circa B.C. 640. No.1.
図1 古代の壺, およそB.C. 640年頃 No. 1

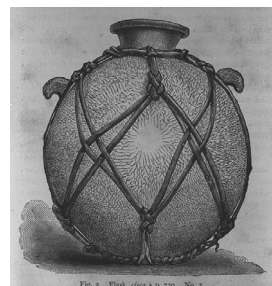


Fig.2. Flask, circa A.D. 730. No.2.
図2 びん, およそ A.D. 730年頃 No. 2

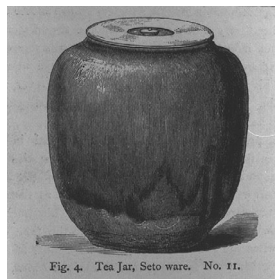


Fig.4. Tea Jar, Seto ware. No.11.
図4 茶入, 瀬戸焼 No. 11



Fig.5. Incense burner, Seto ware. No.13.
図5 香炉, 瀬戸焼 No. 13



Fig.6. Fukurokuju, Ki-Seto ware. No.18.
図6 福祿寿, 黄瀬戸焼 No. 18

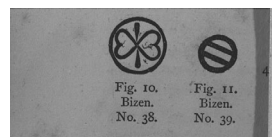


Fig.10. Bizen. No.38. Fig.11. Bizen. No.39.
図10 備前No.38. 図11 備前No.39

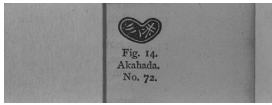


Fig.14. Akahada. No.72.
図14 赤膚 No. 72

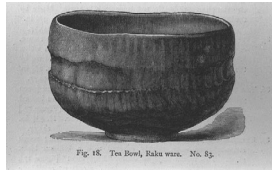


Fig.18. Tea bowl, Raku ware. No.83.
図18 茶碗, 楽焼 No. 83

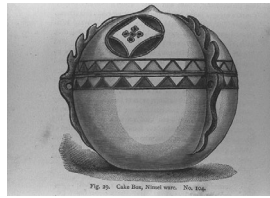


Fig.29. Cake box, Ninsei ware. No.104.
図29 菓子箱[鉢], 仁清焼 No. 104

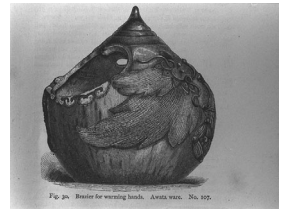


Fig.30. Brazier for warming hands. Awata ware. No.107.
図30 手を温めるための火鉢, 栗田焼 No. 107



Fig.35. Cock. Kiyomidzu ware. No.116.
図35 おんどり, 清水焼 No. 116

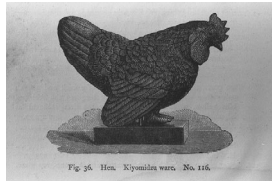


Fig.36. Hen. Kiyomidzu ware. No.116.
図36 めんどり, 清水焼 No. 116

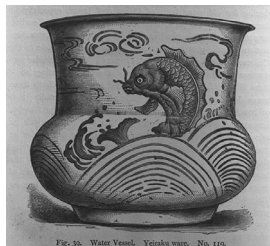


Fig.39. Water vessel. Yeiraku ware. No.119.
図39 水差し, 永楽焼 No. 119



Fig.46. Incense burner. Satsuma ware. No.134.
図46 香炉, 薩摩焼 No. 134



Fig.48. Flower vase. Yatsu-shiro ware. No.145.
図48 花瓶, 八代焼 No. 145

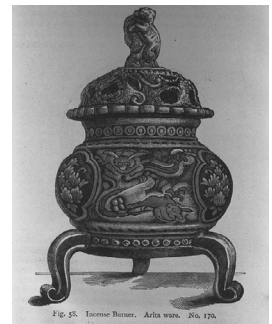


Fig.58. Incense burner. Arita ware. No.170.
図58 香炉, 有田焼 No. 170



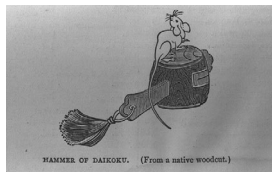
Fig.59. Arita. No.177.
図59 有田[焼] No. 177



Fig.66. Lion. Mikawaji ware. No.200.
図66 獅子, 三川内焼 No. 200



Badge of the Prince of Soma.
相馬の君主のしるし



Hammer of Daikoku.
大黒の槌[打出の小槌]