



**CHALMERS**  
UNIVERSITY OF TECHNOLOGY

## Exploring the Link between Thermal Experience and Adaptation to a New Climate

Downloaded from: <https://research.chalmers.se>, 2019-05-11 18:12 UTC

Citation for the original published paper (version of record):

Amin, R., Teli, D., James, P. (2018)

Exploring the Link between Thermal Experience and Adaptation to a New Climate

Future Cities and Environment, 4(1)

<http://dx.doi.org/10.5334/fce.5>

N.B. When citing this work, cite the original published paper.

TECHNICAL ARTICLE

# Exploring the Link between Thermal Experience and Adaptation to a New Climate

Rucha Amin\*, Despoina Teli\*† and Patrick James\*

Numerous field studies conducted in different locations have found that peoples' thermal comfort varies with local climate. However, little is understood about the effect of moving from one climate to another. Literature suggests that people would be able to adapt to the typical indoor climate in a new location, though estimated timescales for this process differ. This paper uses data from a 6-month field study to investigate the process of thermal adaptation to a new climate. The field study consisted of a series of four thermal comfort surveys conducted with 48 occupants of single occupancy residential accommodation units, which helped to estimate their preferred temperatures. The surveys were carried out between October 2015 and April 2016 in Southampton, UK, with high resolution indoor air temperature data collected for the periods between the surveys.

Study participants were grouped into three categories: long term residents of the UK (Category A), recently moved to the UK from cold climates (Category An) and recently moved to the UK from warm climates (Category B). The higher indoor temperatures of participants from cool climates (Category An) indicates the influence of indoor thermal history in determining thermal comfort conditions in a new location. This is highlighted by the fact that 94% of Category An participants reported having heating in their previous residence compared to 17% of Category B participants. Analysis of comfort temperatures over the first 6 months of occupancy shows no indication that occupants from Category An or B are adapting their indoor preferences to match that of long term UK residents, given the choice to create their preferred environment. Finally, comparison of indoor air temperature and comfort temperature found a higher correlation in Category A participants which supports the key principles of adaptive comfort theory. Category An demonstrated fairly close correlation though air temperatures were higher than comfort temperatures which may be due to embedded heater use behaviour patterns. Category B demonstrated no correlation between comfort temperature and air temperature which may be due to unfamiliarity to indoor heating systems.

**Keywords:** adaptive thermal comfort; indoor temperature; occupant behaviour; thermal history; comfort temperature; heating

## 1. Introduction

Many field studies have been conducted in various climates across the world which demonstrate that comfort temperature is closely linked to local climate (Brager & de Dear 1998; McCartney & Nicol 2002; Nicol 2017; Taleghani et al. 2013; Zhang et al. 2017). Adaptive thermal comfort theory explains this phenomenon with respect to occupants' active engagement with their indoor environment (de Dear & Brager 1998; Nicol et al. 2012). This is to say that if an environment causes an occupant discomfort,

they are likely to take responsive actions to restore comfort (Nicol & Humphreys 2002). These responsive actions are said to be rooted in one of three types of adaptation: behavioural, physiological or psychological (Brager & de Dear 1998). Conceptually, all three can be linked to local climate in some way however these relationships have not been studied rigorously (Schweiker et al. 2012).

Despite the fact that adaptation is a fundamental aspect of adaptive thermal comfort theory, little research has addressed the nature of adaptation or the influence of thermal history on current preferences. The majority of the studies addressing thermal history have been conducted by Luo et al. in China and employ groups of participants moving between Northern and Southern China (Luo, Ji, et al. 2016; Luo, Zhou, et al. 2016; Luo, de Dear, et al. 2016). A key factor in these studies is the availability of district heating in northern regions where the climate is described as 'severe cold' (Luo, de Dear, et al. 2016). In contrast, southern

\* Sustainable Energy Research Group, Faculty of Engineering and the Environment, University of Southampton, University Road, Southampton, SO17 1BJ, GB

† Division of Building Services Engineering, Department of Architecture and Civil Engineering, Chalmers University of Technology, SE-412 96, Goteborg, SE

Corresponding author: Rucha Amin ([r.amin@soton.ac.uk](mailto:r.amin@soton.ac.uk))

regions are not provided with district heating despite cold winter temperatures. The key findings from this group of chamber and field studies are firstly that occupants adapt more easily to neutral conditions than more severe conditions (Luo, de Dear, et al. 2016). Secondly, these studies find that in addition to local climate, indoor thermal history influences thermal adaptation (Luo, Ji, et al. 2016; Luo, de Dear, et al. 2016). This is also supported by findings from a climate chamber study which investigated differences in thermal preferences between participants from Nigeria, Turkey and Hungary (Kalmár 2016).

This study aims to compare the thermal preferences and adaptation of occupants from different climate zones after they moved to a new location. Further to this, presented here is an investigation into the relationship between thermal experience and change of thermal preferences in a modern residential building taking into account seasonal variation in local weather conditions.

## 2. Study Design

Field studies of thermal comfort typically involve structured subjective responses to indoor conditions (ISO 2005; ASHRAE 2013) alongside measurements of the environment using a sensing station (ISO 2001). Increasingly, studies are also employing air temperature and humidity monitoring devices for longer term assessment of the indoor environment. The Griffith's method is a commonly used method for determining the comfort temperature of participants in studies with relatively small sample sizes (Griffiths 1990; Nicol et al. 2012). This simple method linearly adjusts the operative temperature ( $T_{op}$ ) based on participants vote (TSV) on the seven point ASHRAE thermal sensation scale (ASHRAE 2013) to give a comfort temperature ( $T_{com}$ ) (Griffiths 1990; Nicol et al. 2012):

$$T_{com} = T_{op} - TSV/0.5$$

In order to investigate the link between thermal experience and adaptation to a new climate, a mixed methods field study was developed. The field study was conducted in the University of Southampton's Mayflower halls of residence complex (Section 2.1). Convenience sampling was used which resulted in a total of 47 participants. The study includes an in-depth participant questionnaire, a series of four thermal comfort surveys and long term, high resolution indoor temperature monitoring conducted during the academic year commencing in 2015. A timeline for

the surveys is shown in **Table 1**. The first questionnaire, conducted within a month of the start of the occupancy period, included details of participants' background such as location (city and country) of previous residence and availability of heating and cooling in previous residence. The thermal comfort survey, conducted with the initial survey and a subsequent 3 times, was based on the questionnaire used in the SCATs database (McCartney & Nicol 2002). Notably, this included thermal sensation on a 7 point ASHRAE scale (ASHRAE 2013): cold, cool, slightly cool, neutral, slightly warm, warm, hot.

All face to face surveys were conducted in participants' accommodation rooms and were accompanied by measurements of the indoor environment (air temperature, radiant temperature, air velocity and relative humidity). These were taken using the ISO 7726 (2001) compliant DeltaOhm HD32.3 portable sensing station. These measurements, along with the subjective thermal sensation responses allowed for the calculation of comfort temperature using the Griffiths method as described above. During the first survey visit, an air temperature and humidity data logger (MadgeTech RH101A) was installed in each participant's room. The logger was placed in one of two locations chosen to ensure no direct solar radiation or heat source and was set to record single measurements of the air temperature at 5 minute intervals. For the purpose of this investigation, three 1 week monitoring periods between surveys were selected (**Table 1**). Selection of the time period was based on equidistance from surveys either side while also avoiding university holiday periods where occupants were likely to be away. **Figure 1** provides a timeline showing the month of the comfort surveys and the selected monitoring periods.

Participants were grouped into three categories based on average winter temperatures in the location of residence prior to occupancy in Mayflower. The categories are as follows:

Category	Description
A	Mostly living in the south of the UK for the two years prior to moving to Mayflower
An	Mostly living in a climate with winters as cold as or colder than Southampton for the two years prior to moving to Mayflower
B	Mostly living in a climate with winters warmer than Southampton for the two years prior to moving to Mayflower

**Table 1:** Study details and timeline with mean ambient outdoor temperature (weatherunderground 2016).

Month	Type	Start date	End date	Average monthly ambient temperature (°C)
October	Comfort survey + background	19/10/15	03/12/15	11.2
November	Monitoring	16/11/15	22/11/15	10.3
December	Comfort survey	30/11/15	14/12/15	10.6
January	Monitoring	11/01/16	17/01/16	5.8
February	Comfort survey	02/02/16	11/02/16	5.4
March	Monitoring	07/03/16	13/03/16	6.3
April	Comfort survey	18/04/16	27/04/16	8.5



where regulation stipulates that areas in the Northern region where severe winters are typical must have government controlled district heating. It is common in these regions for homes to have no heating controls and high indoor temperatures (Cao et al. 2014; Wang et al. 2017). Therefore it is possible that many Category An residents are using their heating controls in this manner, resulting in high, but perhaps comfortable, temperature conditions. This points to the importance of behavioural and psychological adaptation in a new climate context.

Figure 3 also demonstrates that there is little change in indoor temperature in the rooms from one period to the next. This is also highlighted in Figure 4, which shows the hourly averaged indoor air temperature for each room for the three selected periods. Again, this is grouped by climate of previous residence (shown in colour) with the daily mean outdoor temperature included for reference (SOTONMET 2017). For all categories this is notable since it provides no indication of seasonal variability. The stable and high temperatures from November to March indicate that as a group the residents who are new to the UK, Categories An and B, are continuing to maintain their higher preferred temperatures rather than adapting to match the preferences of the long term residents. This calls into question the utility of passive climate chamber studies investigating adaptation times to new climates as they overlook the interaction of occupants with controls and the building. While it may be possible for people to adapt to new indoor conditions, if they are able to modify their environment they may instead continue to match their environment to their preferences over the long term.

**Table 2:** Mean and standard deviation of indoor air temperature grouped by climate of previous residence.

	Indoor air temperature $T_a$ (°C)					
	November		January		March	
	mean	$\sigma$	mean	$\sigma$	mean	$\sigma$
<b>Category A</b>	22.6 <sup>i</sup>	1.3	22.7 <sup>ii</sup>	1.6	23.4	1.6
<b>Category An</b>	24.7 <sup>i</sup>	1.4	25.1 <sup>ii,iii</sup>	1.7	25.4	2.0
<b>Category B</b>	23.7	1.2	23.5 <sup>iii</sup>	1.5	24.0	1.4

<sup>i, ii, iii</sup> indicates statistically significant difference between groups.

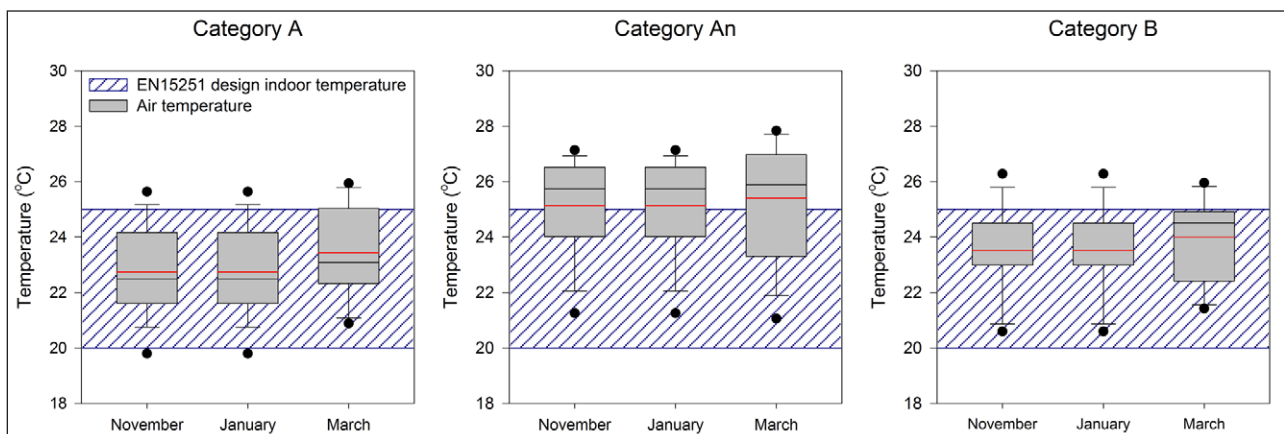
### 3.2. Comfort temperatures

Figure 5 shows the distribution of comfort temperatures, calculated using the Griffiths method grouped by climate of previous residence. These results are also summarised in Table 3. The roman numerals represent statistically significant differences in comfort temperature determined by one way ANOVA (with Tukey's HSD post-hoc test). Category B is found to have a significantly higher mean comfort temperature than Category A in the first (1.7°C) and second (2.2°C) survey conducted in October and December, respectively. Due to non-normality of the data, ANOVA analysis could not be performed on the February or April surveys. On average, the comfort temperatures of Category A subjects were lower than the other two groups and well within EN15251 design values. While the comfort temperatures fluctuate slightly over time, there are no significant differences between surveys in any group.

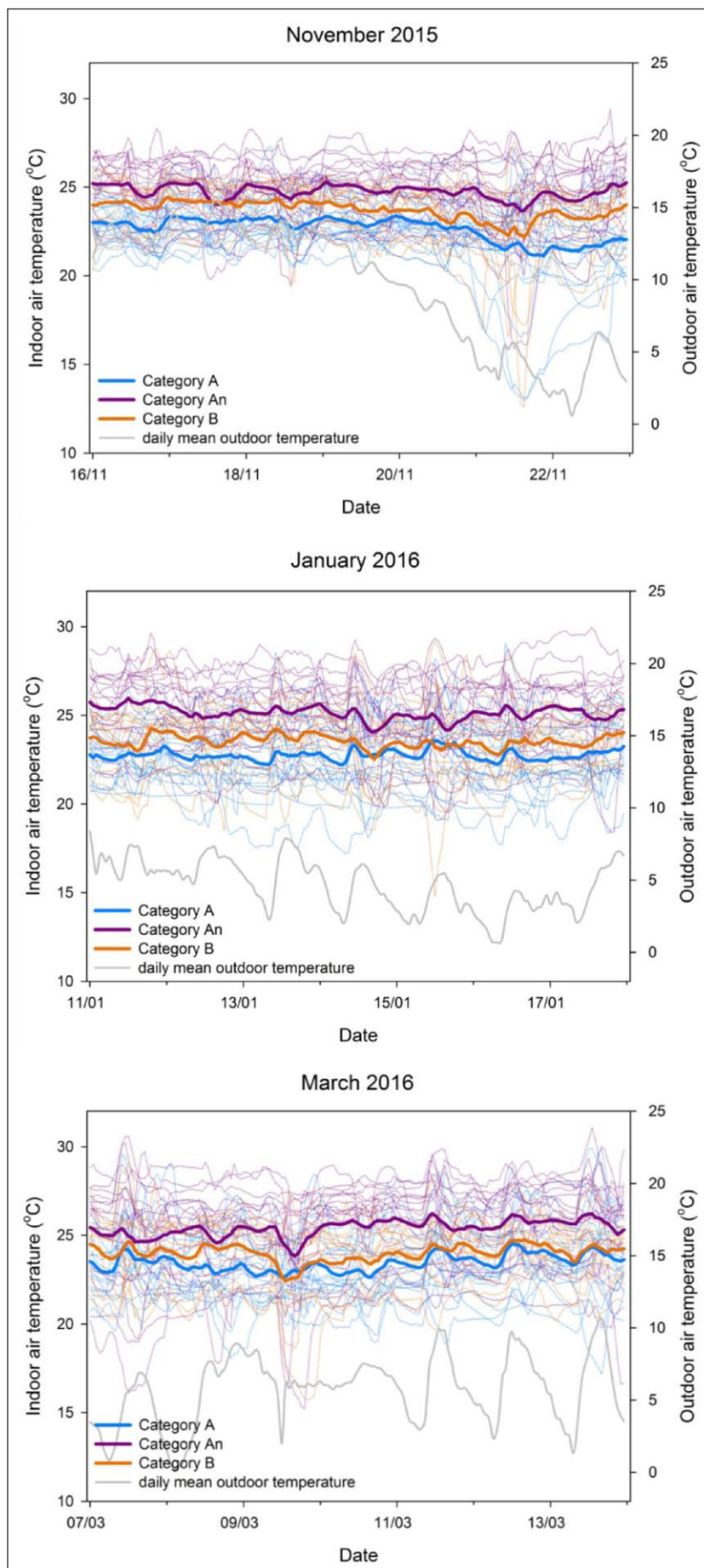
### 3.3. Comparison of preferred and actual temperature

Based on the principle of adaptive thermal comfort, it is expected that indoor air temperature is closely related to comfort temperature. This assumes that individuals take appropriate actions (e.g. opening windows, turning on radiators) to maintain comfort. Figure 6 shows the relationship between mean indoor air temperature across the three selected monitoring periods and mean comfort temperature across all four surveys. The grey reference line corresponds to the case of 'perfect' adaptation, where the indoor temperature equals the occupant's comfort temperature. There is a significant correlation ( $r = 0.58$ ) between the two values when considering the whole data set (not considering climate category) which supports the assumption of the adaptive principle. Category A, long term UK residents showed the highest level of correlation ( $r = 0.65$ ) with Category An also demonstrating reasonably close correlation (0.55). Category B, however, showed very weak correlation ( $r = 0.28$ ). This indicates that they are the least able to maintain comfortable conditions.

A higher degree of correlation in Category A supports a key premise of adaptive comfort theory as it indicates that those most accustomed to the local conditions, climatic and cultural, are best able to achieve comfort. Many of the Category An participants have air temperatures



**Figure 3:** Monitored indoor air temperature for the three selected periods grouped by climate of previous residence.



**Figure 4:** Hourly averaged indoor air temperature (left axis) for each accommodation unit for three one-week periods grouped by climate of previous residence. The hourly averaged ambient temperature is shown on the right axis.

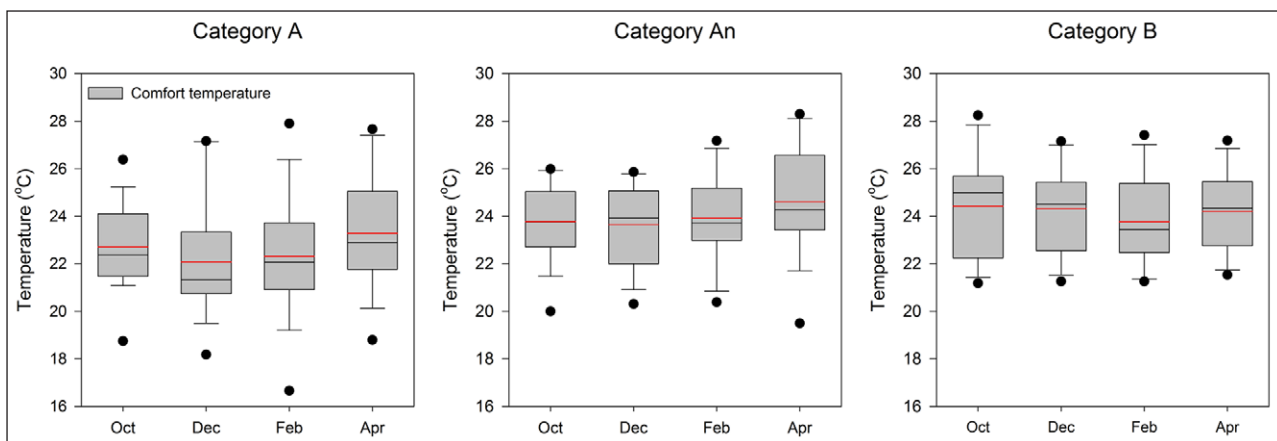


Figure 5: Comfort temperature for each survey grouped by climate of previous residence.

Table 3: Comfort temperatures calculated using the Griffiths method grouped by climate of previous residence.

	Comfort temperature $T_{com}$ (°C)							
	October		December		February		April	
	mean	$\sigma$	mean	$\sigma$	mean	$\sigma$	mean	$\sigma$
Category A	22.7 <sup>i</sup>	1.8	22.1 <sup>ii</sup>	2.4	22.3	2.6	23.3	2.4
Category An	23.8	1.6	23.6	1.7	23.9	1.8	24.6	2.2
Category B	24.4 <sup>i</sup>	2.2	24.3 <sup>ii</sup>	1.8	23.8	1.9	24.4	1.7

<sup>i,ii</sup> indicates statistically significant difference between groups.

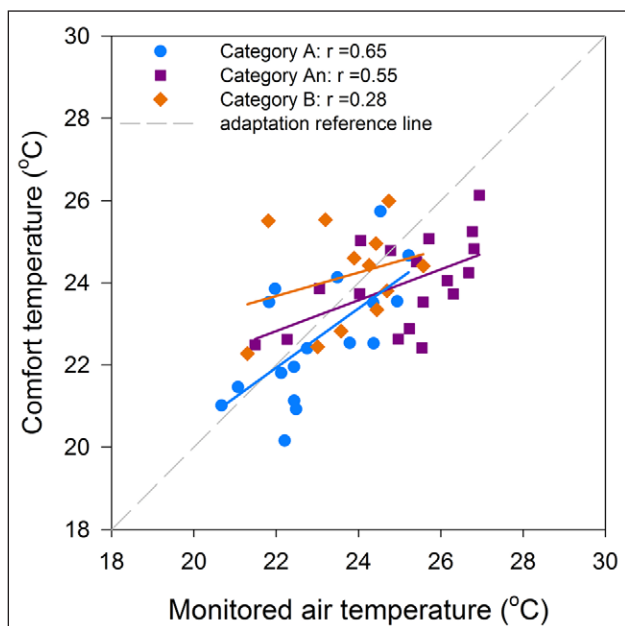


Figure 6: Relationship between participant's mean comfort temperature across the four surveys and mean indoor air temperature for the three monitoring periods. The correlation coefficient (r) for the whole data set is 0.58.

higher than their comfort temperature. This provides further evidence that heating controls are being used in a similar way to the district heating systems of their home country which in this context is compromising thermal comfort. Weak correlation between comfort temperature and air temperature in Category B may be due to a lack of

familiarity with the new conditions they experience, especially indoor heating systems, with only 17% having had heating in their previous residence.

#### 4. Conclusions

This paper presented results from a 6-month field study investigating the relationship between thermal experience and adaptation to a new climate. There were significant differences found in indoor air temperature between climate categories in 2 out of the 3 monitoring periods, with long term UK residents' (Category A) being lower in both instances. Participants from cold climates not including the UK (Category An) had consistently high indoor air temperatures which is likely to be due to being accustomed to high levels of central space heating. This highlights the importance of indoor climate experience in determining long term thermal preference and behaviour. Category B (warm climates) participants were found to have a higher mean comfort temperature than Category A in 2 out of the 4 thermal comfort surveys. Additionally, neither the Category An or B groups changed comfort temperature from one survey to the next indicating that no significant adaptation to the new climate took place during the investigated period of 6 months. This shows that, unlike climate chamber experiments, where acclimation may take place within 1–2 weeks (van der Lans et al. 2013; Pallubinsky et al. 2017), in real environments the duration of adaptation appears to be much longer, if at all.

Comparison of indoor air temperature and comfort temperature demonstrated that Category A had the highest level of correlation ( $r = 0.65$ ). This supports the principles of adaptive thermal comfort in that those most accustomed to the environment, are most able to achieve comfort. Category An participants had reasonably high correlation ( $r = 0.55$ ) but with higher indoor air temperatures compared to comfort temperatures which may be explained by space heating provision with limited individual control in their previous residence. Category B participants showed very weak correlation between comfort temperature and air temperature, indicating that this group were least able to control their environment to suit their preferences.

The findings of this study are likely to have implications for the energy use of buildings of this type since

space heating is used in unexpected ways. However, it also presents opportunities for easing the transition to a new indoor environment for occupants. In particular, it is clear that occupants from warm climates, typically unfamiliar with space heating, would benefit from guidance on the heating controls. This is also true of some participants from cold climates who may be accustomed to space heating but not controls at the individual level. The relationship between comfort temperature and air temperature requires further investigation since the direction of causation is unclear. Either way, this could be used in aiding the transition to a new climate. This could be by helping occupants to match their comfort temperature to typical indoor environments in their new setting or by adjusting the design, operation and management of the building to provide them with their most familiar conditions. An example of this could be to place occupants who are expected to have higher comfort temperatures on the facades of a building which receive the highest solar gain.

### Acknowledgements

The authors would like to thank the participants and Mayflower halls of residence management for their cooperation. This work is part of the activities of the Energy and Climate Change Division at the University of Southampton ([www.energy.soton.ac.uk](http://www.energy.soton.ac.uk)) and is supported by funding from the Engineering and Physical Sciences Research Council (EPSRC) through a Doctoral Training Partnership and the Transforming Engineering of Cities Programme grant EP/J017298/1.

### Competing Interests

The authors have no competing interests to declare.

### References

- Amin, R**, et al. 2016 The influence of a student's "home" climate on room temperature and indoor environmental controls use in a modern halls of residence. *Energy and Buildings*, 119: 331–339. DOI: <https://doi.org/10.1016/j.enbuild.2016.03.028>
- ASHRAE** 2013 Thermal Environmental Conditions for Human Occupancy. *ANSI/ASHRAE Standard 55*.
- Brager, G S** and **de Dear, R J** 1998 Thermal adaptation in the built environment: a literature review. *Energy and Buildings*, 27(1): 83–96. DOI: [https://doi.org/10.1016/S0378-7788\(97\)00053-4](https://doi.org/10.1016/S0378-7788(97)00053-4)
- Cao, B**, et al. 2014 Individual and district heating: A comparison of residential heating modes with an analysis of adaptive thermal comfort. *Energy and Buildings*, 78: 17–24. DOI: <https://doi.org/10.1016/j.enbuild.2014.03.063>
- CEN** 2007 BS EN ISO 15251: Indoor environmental input parameters for design and assessment of energy performance of buildings addressing indoor air quality, thermal environment, lighting and acoustics. *Comité Européen de Normalisation*. Brussels.
- de Dear, R** and **Brager, G S** 1998 Developing an adaptive model of thermal comfort and preference. *ASHRAE Transactions*, 104(1): 145–167.
- Griffiths, I D** 1990 Thermal comfort in buildings with passive solar features: Field Studies. *Report to the Commission of the European Communities*. EN3S-090.
- ISO** 2001 BS EN ISO 7726: Ergonomics of the thermal environment – Instruments for measuring physical quantities.
- ISO** 2005 BS EN ISO 7730:2005 Ergonomics of the thermal environment – Analytical determination of thermal comfort using calculation of the PMV and PPD indices and local thermal comfort criteria.
- Kalmár, F** 2016 Investigation of thermal perceptions of subjects with diverse thermal histories in warm indoor environment. *Building and Environment*, 107: 254–262. DOI: <https://doi.org/10.1016/j.buildenv.2016.08.010>
- Luo, M, de Dear, R**, et al. 2016 The dynamics of thermal comfort expectations: The problem, challenge and implication. *Building and Environment*, 95: 322–329. DOI: <https://doi.org/10.1016/j.buildenv.2015.07.015>
- Luo, M, Ji, W**, et al. 2016 Indoor climate and thermal physiological adaptation: Evidences from migrants with different cold indoor exposures. *Building and Environment*, 98: 30–38. DOI: <https://doi.org/10.1016/j.buildenv.2015.12.015>
- Luo, M, Zhou, X**, et al. 2016 Exploring the dynamic process of human thermal adaptation: A study in teaching building. *Energy and Buildings*, 127: 425–432. DOI: <https://doi.org/10.1016/j.enbuild.2016.05.096>
- McCartney, K J** and **Nicol, J F** 2002 Developing an adaptive control algorithm for Europe. *Energy and Buildings*, 34(6): 623–635. DOI: [https://doi.org/10.1016/S0378-7788\(02\)00013-0](https://doi.org/10.1016/S0378-7788(02)00013-0)
- Nicol, F** 2017 Temperature and adaptive comfort in heated, cooled and free-running dwellings. *Building Research & Information*, 1–15. DOI: <https://doi.org/10.1080/09613218.2017.1283922>
- Nicol, F, Humphreys, M** and **Roaf, S** 2012 *Adaptive Thermal Comfort: Principles and Practice*. Routledge, Taylor and Francis Group.
- Nicol, J F** and **Humphreys, M A** 2002 Adaptive thermal comfort and sustainable thermal standards for buildings. *Energy and Buildings*, 34(6): 563–572. DOI: [https://doi.org/10.1016/S0378-7788\(02\)00006-3](https://doi.org/10.1016/S0378-7788(02)00006-3)
- Pallubinsky, H**, et al. 2017 The effect of warmth acclimation on behaviour, thermophysiology and perception. *Building Research & Information*, 1–8. DOI: <https://doi.org/10.1080/09613218.2017.1278652>
- Schweiker, M**, et al. 2012 Development and validation of a methodology to challenge the adaptive comfort model. *Building and Environment*, 49: 336–347. DOI: <https://doi.org/10.1016/j.buildenv.2011.08.002>
- SOTONMET** 2017 Weather Reports from Southampton Bar. Available at: <http://www.sotonmet.co.uk>.
- Taleghani, M**, et al. 2013 A review into thermal comfort in buildings. *Renewable and Sustainable Energy Reviews*, 26: 201–215. DOI: <https://doi.org/10.1016/j.rser.2013.05.050>



- van der Lans, A A J J**, et al. 2013 Cold acclimation recruits human brown fat and increases nonshivering thermogenesis. *Journal of Clinical Investigation*, 123(8): 3395–3403. DOI: <https://doi.org/10.1172/JCI68993>
- Wang, Z, Ji, Y and Ren, J** 2017 Thermal adaptation in overheated residential buildings in severe cold area in China. *Energy and Buildings*, 146: 322–332. DOI: <https://doi.org/10.1016/j.enbuild.2017.04.053>
- weatherunderground** 2016 Weather History for Southampton, United Kingdom|Weather Underground. Available at: <https://www.wunderground.com/history/airport/EGHI/>.
- Zhang, N**, et al. 2017 A comparison of winter indoor thermal environment and thermal comfort between regions in Europe, North America, and Asia. *Building and Environment*, 117: 208–217. DOI: <https://doi.org/10.1016/j.buildenv.2017.03.006>

**How to cite this article:** Amin, R, Teli, D and James, P (2018). Exploring the Link Between Thermal Experience and Adaptation to a New Climate. *Future Cities and Environment*, 4(1): 9, 1–8, DOI: <https://doi.org/10.5334/fce.5>

**Submitted:** 09 October 2017

**Accepted:** 22 January 2018

**Published:** 27 March 2018

**Copyright:** © 2018 The Author(s). This is an open-access article distributed under the terms of the Creative Commons Attribution 4.0 International License (CC-BY 4.0), which permits unrestricted use, distribution, and reproduction in any medium, provided the original author and source are credited. See <http://creativecommons.org/licenses/by/4.0/>.

**]u[** *Future Cities and Environment*, is a peer-reviewed open access journal published by Ubiquity Press.

**OPEN ACCESS** 