



CHALMERS
UNIVERSITY OF TECHNOLOGY

Dark matter spin determination with directional direct detection experiments

Downloaded from: <https://research.chalmers.se>, 2019-05-11 18:33 UTC

Citation for the original published paper (version of record):

Catena, R., Krauss, M., Conrad, J. et al (2018)

Dark matter spin determination with directional direct detection experiments

Physical Review D, 97(2)

<http://dx.doi.org/10.1103/PhysRevD.97.023007>

N.B. When citing this work, cite the original published paper.

Dark matter spin determination with directional direct detection experiments

Riccardo Catena,^{1,*} Jan Conrad,^{2,†} Christian Döring,^{3,4,‡} Alfredo Davide Ferella,^{2,§} and Martin B. Krauss^{1,||}

¹*Chalmers University of Technology, Department of Physics, SE-412 96 Göteborg, Sweden*

²*Oskar Klein Centre, Department of Physics, Stockholm University, AlbaNova, Stockholm SE-10691, Sweden*

³*Institut für Theoretische Physik, Friedrich-Hund-Platz 1, 37077 Göttingen, Germany*

⁴*Max-Planck-Institut für Kernphysik, 69117 Heidelberg, Germany*



(Received 30 June 2017; published 12 January 2018)

If dark matter has spin 0, only two WIMP-nucleon interaction operators can arise as leading operators from the nonrelativistic reduction of renormalizable single-mediator models for dark matter-quark interactions. Based on this crucial observation, we show that about 100 signal events at next generation directional detection experiments can be enough to enable a 2σ rejection of the spin 0 dark matter hypothesis in favor of alternative hypotheses where the dark matter particle has spin 1/2 or 1. In this context, directional sensitivity is crucial since anisotropy patterns in the sphere of nuclear recoil directions depend on the spin of the dark matter particle. For comparison, about 100 signal events are expected in a CF_4 detector operating at a pressure of 30 torr with an exposure of approximately 26,000 cubic-meter-detector days for WIMPs of 100 GeV mass and a WIMP-fluorine scattering cross section of 0.25 pb. Comparable exposures require an array of cubic meter time projection chamber detectors.

DOI: [10.1103/PhysRevD.97.023007](https://doi.org/10.1103/PhysRevD.97.023007)

I. INTRODUCTION

Increasingly, accurate cosmological observations show that our Universe's energy budget is presently dominated by dark energy and dark matter, representing 69% and 26% of the total energy content, respectively [1]. In the standard paradigm of modern cosmology, the dark matter component of the Universe is made of new hypothetical particles which have so far escaped detection [2]. The detection of dark matter particles from the cosmos is arguably the most pressing question in astroparticle physics today. If dark matter is made of weakly interacting massive particles (WIMPs), the experimental technique known as direct detection will be pivotal in this context. It searches for nuclear recoil events induced by the scattering of Milky Way dark matter particles in low-background detectors. The field of dark matter direct detection has progressed very rapidly in recent years. The XENON1T

experiment has recently released its first data, setting the most stringent exclusion limits on the spin-independent WIMP-nucleon scattering cross section, σ_{SI} , for WIMP masses above 10 GeV, with a minimum of $7.7 \times 10^{-47} \text{ cm}^2$ for 35 GeV WIMPs at 90% confidence level [3]. This result improves previous limits on σ_{SI} in the same WIMP mass range reported by the LUX [4] and PANDAX-II [5] experiments. Substantial progress has also been made in the search for light WIMPs. CRESST-II [6] has been operating with an energy threshold for nuclear recoils of 307 eV, deriving the most stringent limits on σ_{SI} in the WIMP mass region below 1.8 GeV. In the mass range around 5 GeV, the most stringent limits on σ_{SI} have been set by CDMS-lite [7]. Finally, the best direct-detection constraints on spin-dependent WIMP-proton and WIMP-neutron scattering cross sections have been derived by PICO-60 [8] and LUX [9], respectively.

In the next decade, complementary strategies will be pursued in order to improve current detection methods, and thus achieve the first WIMP direct detection. A first strategy consists in increasing the target mass of current detectors. Experiments that will focus on this strategy include XENONnT [10], LZ [11] and DARWIN [12]. These experiments will operate in the coming years exploiting multi-ton double phase Xenon detectors. A second strategy consists in lowering the experimental energy threshold in order to gain sensitivity to dark matter particles in the sub-GeV mass range. This approach will be

*catena@chalmers.se

†conrad@fysik.su.se

‡cdoering@mpi-hd.mpg.de

§alfredo.ferella@fysik.su.se

||martin.krauss@chalmers.se

Published by the American Physical Society under the terms of the Creative Commons Attribution 4.0 International license. Further distribution of this work must maintain attribution to the author(s) and the published article's title, journal citation, and DOI. Funded by SCOAP³.

explored by, e.g., CRESST-III [13] and SuperCDMS [14]. A third possibility is to focus on the time dependence of the rate of nuclear recoil events at detector. For example, an annual modulation in the rate of dark matter-induced nuclear recoil events is expected because of the inclination of the Earth’s orbit with respect to the galactic plane. Furthermore, the Earth-crossing of WIMPs can induce a distinctive daily modulation in the number of signal events [15]. Anais [16], Cosinus [17], DM-Ice [18] and Sabre [19], will explore this possibility with the goal of validating or conclusively rule out the dark matter interpretation of the DAMA modulation signal. This signal is currently at odds with a variety of direct detection experiments, despite its statistical significance being at the 9σ level, if standard assumptions regarding astro-, particle and nuclear physics are made [20] (see however [21] for a critical reassessment of DAMA’s results). Finally, a fourth strategy consists in developing detectors that are sensitive to the direction of nuclear recoils induced by the scattering of dark matter particles in gaseous target materials [22]. Efforts in developing detectors with directional sensitivity are well-motivated, since the expected angular distribution of dark matter-induced nuclear recoil events is not isotropic, as the Earth’s motion selects a preferred direction in the sphere of recoil directions [23]. Among directional detection experiments currently in a research and development stage are DRIFT [24,25], MIMAC [26,27], DMTPC [28,29], NEWAGE [30,31] and D3 [32]. Typically, diffuse gas detectors and time projection chambers are used to reconstruct the nuclear recoil tracks, but alternative approaches are also considered. These include the use of nuclear emulsions [33], dark matter-electron scattering in crystals [34] and DNA detectors [35].

The purpose of this work is to show that directional detectors can be used to constrain the dark matter particle spin. Directional detectors can be used for “WIMP spin model selection” as a result of recent theoretical developments that we now briefly review. Recoil energy spectra and angular distributions expected at dark matter directional detectors have in the past been calculated for two types of dark matter-nucleon interaction only: the so-called spin-independent and spin-dependent interactions. Recently, this calculation has been extended to the full set of nonrelativistic operators for dark matter-nucleon interactions that are compatible with Galilean invariance, and that are at most linear in the transverse relative velocity operator [36,37]—a framework also known as nonrelativistic effective theory of dark matter-nucleon interactions [38–46]. For later convenience, the sixteen Galilean invariant operators predicted by the effective theory of dark matter-nucleon interactions are listed in Table I. The extension of the standard paradigm based upon the canonical spin-independent and spin-dependent interactions to the nonrelativistic effective theory of dark matter-nucleon interaction has led to the discovery of new potentially important signatures of particle dark matter. The most striking result found in [36,37] is that the angular

TABLE I. Quantum mechanical operators defining the non-relativistic effective theory of dark matter-nucleon interactions [38,39]. The notation is the one introduced in Sec. II. The operators \hat{O}_{17} and \hat{O}_{18} only arise for spin 1 WIMPs, and \mathcal{S} is a symmetric combination of spin 1 WIMP polarization vectors [47].

$$\begin{aligned}
 \hat{O}_1 &= \mathbb{1}_\chi \mathbb{1}_N \\
 \hat{O}_3 &= i\hat{\mathbf{S}}_N \cdot \left(\frac{\hat{\mathbf{q}}}{m_N} \times \hat{\mathbf{v}}^\perp \right) \mathbb{1}_\chi \\
 \hat{O}_4 &= \hat{\mathbf{S}}_\chi \cdot \hat{\mathbf{S}}_N \\
 \hat{O}_5 &= i\hat{\mathbf{S}}_\chi \cdot \left(\frac{\hat{\mathbf{q}}}{m_N} \times \hat{\mathbf{v}}^\perp \right) \mathbb{1}_N \\
 \hat{O}_6 &= \left(\hat{\mathbf{S}}_\chi \cdot \frac{\hat{\mathbf{q}}}{m_N} \right) \left(\hat{\mathbf{S}}_N \cdot \frac{\hat{\mathbf{q}}}{m_N} \right) \\
 \hat{O}_7 &= \hat{\mathbf{S}}_N \cdot \hat{\mathbf{v}}^\perp \mathbb{1}_\chi \\
 \hat{O}_8 &= \hat{\mathbf{S}}_\chi \cdot \hat{\mathbf{v}}^\perp \mathbb{1}_N \\
 \hat{O}_9 &= i\hat{\mathbf{S}}_\chi \cdot \left(\hat{\mathbf{S}}_N \times \frac{\hat{\mathbf{q}}}{m_N} \right) \\
 \hat{O}_{10} &= i\hat{\mathbf{S}}_N \cdot \frac{\hat{\mathbf{q}}}{m_N} \mathbb{1}_\chi \\
 \hat{O}_{11} &= i\hat{\mathbf{S}}_\chi \cdot \frac{\hat{\mathbf{q}}}{m_N} \mathbb{1}_N \\
 \hat{O}_{12} &= \hat{\mathbf{S}}_\chi \cdot \left(\hat{\mathbf{S}}_N \times \hat{\mathbf{v}}^\perp \right) \\
 \hat{O}_{13} &= i \left(\hat{\mathbf{S}}_\chi \cdot \hat{\mathbf{v}}^\perp \right) \left(\hat{\mathbf{S}}_N \cdot \frac{\hat{\mathbf{q}}}{m_N} \right) \\
 \hat{O}_{14} &= i \left(\hat{\mathbf{S}}_\chi \cdot \frac{\hat{\mathbf{q}}}{m_N} \right) \left(\hat{\mathbf{S}}_N \cdot \hat{\mathbf{v}}^\perp \right) \\
 \hat{O}_{15} &= - \left(\hat{\mathbf{S}}_\chi \cdot \frac{\hat{\mathbf{q}}}{m_N} \right) \left[\left(\hat{\mathbf{S}}_N \times \hat{\mathbf{v}}^\perp \right) \cdot \frac{\hat{\mathbf{q}}}{m_N} \right] \\
 \hat{O}_{17} &= i \frac{\hat{\mathbf{q}}}{m_N} \cdot \mathcal{S} \cdot \hat{\mathbf{v}}^\perp \mathbb{1}_N \\
 \hat{O}_{18} &= i \frac{\hat{\mathbf{q}}}{m_N} \cdot \mathcal{S} \cdot \hat{\mathbf{S}}_N
 \end{aligned}$$

distribution of nuclear recoil events generated by the interaction operators \hat{O}_5 , \hat{O}_7 , \hat{O}_8 , \hat{O}_{13} and \hat{O}_{14} in Table I has a maximum in rings centered around the direction of the Earth’s motion in the galactic rest frame, \mathbf{v}_\oplus . For the remaining interaction operators in Table I, recoil events are mainly expected in the direction opposite to \mathbf{v}_\oplus . A second theoretical development that we will exploit in the present analysis is the recent systematic classification and characterization of the nonrelativistic limit of so-called “simplified models”—single-mediator models for dark matter. In [47], it has been shown that the Galilean invariant operators in Table I arise from the nonrelativistic reduction of renormalizable single-mediator models for dark matter-quark interactions, although not all of them as leading operators [48,49]. In particular, within the framework of [47] it is possible to predict the subset of operators in Table I that can be associated to a given dark matter particle spin. As a result, the link between models in [47] and nonrelativistic operators in Table I establishes a correspondence between dark matter spin and ringlike features in the sphere of recoil directions. This correspondence is the theoretical input that we propose to use to constrain the WIMP spin. A method to probe whether dark matter is its own antiparticle has recently been proposed in [50,51].

The method for WIMP spin model selection that we will develop in this work can in principle be applied to arbitrary spin configurations. However, in this work we will focus on the prospects for rejecting the spin 0 WIMP hypothesis.

In this case, our approach to WIMP spin model selection can be illustrated as follows: the operators $\hat{\mathcal{O}}_1$ and $\hat{\mathcal{O}}_{10}$ are the only ones that can arise as leading operators from the nonrelativistic reduction of renormalizable single-mediator models for spin 0 WIMPs [47]. Consequently, rejecting the spin 0 WIMP hypothesis in favor of other WIMP spin configurations is equivalent to rejecting the operators $\hat{\mathcal{O}}_1$ and $\hat{\mathcal{O}}_{10}$ in favor of other interactions. Here we argue that directional detection experiments can be used for this purpose. Indeed, $\hat{\mathcal{O}}_1$ and $\hat{\mathcal{O}}_{10}$ are characterized by angular distributions of nuclear recoil events which do not exhibit ringlike patterns. Therefore, the rejection of $\hat{\mathcal{O}}_1$ and $\hat{\mathcal{O}}_{10}$ can be based upon the search for ringlike features in the sphere of dark matter-induced nuclear recoil events. In this work, we will show that about 100 signal events at next generation directional detection experiments can be enough to enable a 2σ rejection of the spin 0 WIMP hypothesis in favor of alternative hypotheses where the dark matter particle has spin 1/2 or 1.

The paper is organized as follows. In Sec. II, we review the framework used to model WIMP-quark and -nucleon interactions. In Sec. III, we introduce our approach to WIMP spin model selection and explain how experimental data on nuclear recoil energies and directions have been simulated in order to validate our proposal. Section IV is devoted to our results, while in Sec. V we summarize and conclude.

II. THEORETICAL FRAMEWORK

In this section, we review the theoretical framework introduced in [47] and used here to model the interactions of dark matter with quarks and nucleons. In reviewing [47], we show that if dark matter has spin 0, only two WIMP-nucleon interaction operators can be leading operators in the nonrelativistic limit of renormalizable single-mediator models for dark matter-quark interactions. The corresponding interaction operators are denoted by $\hat{\mathcal{O}}_1$ and $\hat{\mathcal{O}}_{10}$ in Table I. Because of this crucial property of spin 0 dark matter, rejecting the hypothesis of a spin 0 WIMP is equivalent to rejecting $\hat{\mathcal{O}}_1$ and $\hat{\mathcal{O}}_{10}$ in favor of alternative interaction operators. In contrast, if dark matter has spin 1/2 or 1, a variety of WIMP-nucleon interactions can arise, and rejecting these spin configurations is generically more difficult. Here we will focus on WIMP-nucleon interactions that are specific to spin 1 and illustrative for spin 1/2 WIMPs, as we will see in Secs. II A and II B, respectively.

A. Spin 1 dark matter

Spin 1 WIMPs can interact with quarks through the exchange of spin 0, 1/2 or 1 particles. Here we focus on the Lagrangian

$$\mathcal{L}_{\text{int}}^{(1)} = -b_6 \partial_\mu (X^{\mu\dagger} X_\nu - X_\nu^\dagger X^\mu) G^\nu - h_3 \sum_q \bar{q} \gamma^\mu q G_\mu, \quad (1)$$

which describes possible interactions of a spin 1 WIMP, X_μ , with the Standard Model quarks, q . Interactions are mediated by the real vector field G_ν . Model parameters are the coupling constants b_6 (imaginary) and h_3 (real), and the dark matter and mediator mass, m_X and m_G , respectively. The cross section for WIMP-nucleon scattering can be computed from the WIMP-nucleon scattering amplitude. In the nonrelativistic limit, Eq. (1) predicts the following amplitude for WIMP-nucleon scattering

$$\begin{aligned} \mathcal{M}_{\text{NR}}^{(1)} = & -\frac{3h_3 b_6 m_N}{m_G^2 m_X} \left[\hat{\mathbf{S}}_X^{r'r} \cdot \left(\frac{i\mathbf{q}}{m_N} \times \mathbf{v}^\perp \right) \xi^{s'\dagger} \mathbb{1}_N \xi^s \right. \\ & + \left(\frac{\mathbf{q}}{m_N} \cdot \hat{\mathbf{S}}_X^{r'r} \right) \left(\frac{\mathbf{q}}{m_N} \cdot \xi^{s'\dagger} \hat{\mathbf{S}}_N \xi^s \right) \\ & \left. - \frac{q^2}{m_N^2} \hat{\mathbf{S}}_X^{r'r} \cdot \xi^{s'\dagger} \hat{\mathbf{S}}_N \xi^s \right], \quad (2) \end{aligned}$$

where $(\hat{\mathbf{S}}_X^{r'r})_k \equiv \langle r' | (\hat{\mathbf{S}}_X)_k | r \rangle = -i\epsilon_{ijk} \epsilon_i^{r'*} \epsilon_j^r$, $(\hat{\mathbf{S}}_X)_k$, $k = 1, 2, 3$, is the k -th component of the dark matter particle spin operator, the kets $|r\rangle$ and $|r'\rangle$ represent initial and final polarization states, respectively, and $\epsilon_j^r = \delta_j^r$, $r = 1, 2, 3$ are polarization vectors. Two-component Pauli spinors are denoted by ξ^s , whereas the matrices $\mathbb{1}_N$ and $\hat{\mathbf{S}}_N = \boldsymbol{\sigma}/2$ are the 2×2 identity and nucleon spin operator, respectively. Here the vector $\boldsymbol{\sigma}$ represents the three Pauli matrices and m_N is the nucleon mass. Finally, $\mathbf{q} = \mathbf{k} - \mathbf{k}'$ is the momentum transferred, \mathbf{k} and \mathbf{k}' are initial and final nucleon three-momenta, and \mathbf{v}^\perp is the WIMP-nucleon transverse relative velocity. By construction, $\mathbf{v}^\perp \cdot \mathbf{q} = 0$ [39]. Eq. (1) implies isoscalar WIMP-nucleon interactions, i.e. the same coupling to protons and neutrons. In the first-order Born approximation, $\mathcal{M}_{\text{NR}}^{(1)}$ is also given by

$$\mathcal{M}_{\text{NR}}^{(1)} = -\langle N(\mathbf{k}', s') | \mathcal{V}_{r'r}^{(1)} | N(\mathbf{k}, s) \rangle, \quad (3)$$

where $|N(\mathbf{k}, s)\rangle$ represents a single-nucleon state and $\mathcal{V}_{r'r}^{(1)}$ is the nonrelativistic quantum mechanical potential

$$\begin{aligned} \mathcal{V}_{r'r}^{(1)} = & \frac{3h_3 b_6 m_N}{m_G^2 m_X} \left[\hat{\mathbf{S}}_X^{r'r} \cdot \left(\frac{i\hat{\mathbf{q}}}{m_N} \times \hat{\mathbf{v}}^\perp \right) \mathbb{1}_N \right. \\ & + \left(\frac{i\hat{\mathbf{q}}}{m_N} \cdot \hat{\mathbf{S}}_X^{r'r} \right) \left(\frac{i\hat{\mathbf{q}}}{m_N} \cdot \hat{\mathbf{S}}_N \right) \\ & \left. - \frac{q^2}{m_N^2} \hat{\mathbf{S}}_X^{r'r} \cdot \hat{\mathbf{S}}_N \right]. \quad (4) \end{aligned}$$

In Eq. (4), $\hat{\mathbf{q}}$ and $\hat{\mathbf{v}}^\perp$ are Hermitian and Galilean invariant operators acting on single-nucleon states $|N(\mathbf{k}, s)\rangle$. Introducing the notation: $\hat{\mathcal{O}}_4 = \hat{\mathbf{S}}_X \cdot \hat{\mathbf{S}}_N$, $\hat{\mathcal{O}}_5 = \hat{\mathbf{S}}_X \cdot (i\hat{\mathbf{q}}/m_N \times \hat{\mathbf{v}}^\perp) \mathbb{1}_N$, and $\hat{\mathcal{O}}_6 = (\hat{\mathbf{S}}_X \cdot i\hat{\mathbf{q}}/m_N) (\hat{\mathbf{S}}_N \cdot i\hat{\mathbf{q}}/m_N)$, the potential $\mathcal{V}_{r'r}^{(1)}$ in Eq. (4) can be rewritten in the notation of [52]. Neglecting two-nucleon currents, the amplitude for WIMP-nucleus scattering is given by

$$\mathcal{M}_{\text{NR};A}^{(1)} = - \sum_{j=1}^A \int d\mathbf{r} e^{-i\mathbf{q}\cdot\mathbf{r}} \langle f | \mathcal{V}_{\nu r}^{(1)}(j) | i \rangle, \quad (5)$$

where A is the nucleus mass number, \mathbf{r} the WIMP-nucleus center of mass relative distance, and $|i\rangle$ and $|f\rangle$ initial and final nuclear state, respectively. In Eq. (5), the j th nucleon contributes to the amplitude $\mathcal{M}_{\text{NR};A}^{(1)}$ through the potential $\mathcal{V}_{\nu r}^{(1)}(j)$, which is equal to $\mathcal{V}_{\nu r}^{(1)}$ but with \mathbf{S}_N and $\mathbb{1}_N$ now defined in the j th nucleon spin space, and with $\hat{\mathbf{q}}$ and \mathbf{v}^\perp decomposed into a term acting on the nucleus center of mass coordinates and a term acting on the internal nucleon coordinates [52]. Corrections to the WIMP-nucleus scattering amplitude due to two-nucleon currents have only been computed for spin 1/2 dark matter, and for selected nuclear currents [53]. In this case, it has been found that two-nucleon currents can be important in the low-momentum transfer limit. Specifically, for odd-neutron (odd-proton) nuclei, two-nucleon currents can significantly increase the WIMP-proton (WIMP-neutron) scattering cross section, because of strong interactions between nucleons arising from meson exchange [49]. To extend these calculations to arbitrary WIMP spins and nuclear currents goes beyond the scope of the present work. Finally, the differential cross section for WIMP-nucleus scattering is given by

$$\frac{d\sigma^{(1)}}{dE_R} = \frac{2m_A}{12\pi v^2(2J+1)} \sum_{\text{spins}} |\mathcal{M}_{\text{NR};A}^{(1)}|^2, \quad (6)$$

where J and m_A are the spin and mass of the target nucleus, respectively, E_R is the nuclear recoil energy, and the sum runs over initial and final spin/polarization states. In the numerical applications, $|\mathcal{M}_{\text{NR};A}^{(1)}|^2$ is expanded in nuclear response functions which are quadratic in matrix elements of nuclear charges and currents, as shown in [52]. Notice that the interaction operator $\hat{\mathcal{O}}_5$, i.e. the first term in Eq. (3), gives the leading contribution to Eq. (6). Eq. (1) is the only renormalizable single-mediator Lagrangian that can generate $\hat{\mathcal{O}}_5$ as a leading operator in the nonrelativistic limit. Therefore, the interaction operator $\hat{\mathcal{O}}_5$ is specific to spin 1 WIMPs. We will refer to a scenario where dark matter has spin 1 and the potential responsible for WIMP-nucleon interactions is $\mathcal{V}_{\nu r}^{(1)} = c_5 \langle r' | \hat{\mathcal{O}}_5 | r \rangle$, $c_5 \in \mathbb{R}$, as ‘‘WIMP spin hypothesis $\mathcal{H}_5^{s=1}$ ’’.

B. Spin 1/2 dark matter

Spin 1/2 WIMPs can interact with quarks through the exchange of spin 0 and spin 1 mediators only. Spin 1/2 mediators are not allowed by Lorentz invariance. Here we focus on the interaction Lagrangian

$$\mathcal{L}_{\text{int}}^{(1/2)} = -\lambda_3 \bar{\chi} \gamma^\mu \chi G_\mu - h_4 \sum_q \bar{q} \gamma^\mu \gamma^5 q G_\mu, \quad (7)$$

which describes the interactions of a WIMP χ of spin 1/2 and mass m_χ . The mediator is a spin 1 particle G_ν of mass m_G , and $h_4, \lambda_3 \in \mathbb{R}$. From Eq. (7) one obtains the non-relativistic potential

$$\mathcal{V}_{\nu r}^{(1/2)} = \frac{2\Delta h_4 \lambda_3}{m_G^2} \left(\eta^{r\dagger} \hat{\mathcal{O}}_7 \eta^r - \frac{m_N}{m_\chi} \eta^{r\dagger} \hat{\mathcal{O}}_9 \eta^r \right), \quad (8)$$

where $\Delta = 0.33$ [47], η^r and $\eta^{r\dagger}$ are two-component Pauli spinors for the spin 1/2 WIMP χ , $\hat{\mathcal{O}}_7 = \hat{\mathbf{S}}_N \cdot \hat{\mathbf{v}}^\perp \mathbb{1}_\chi$, $\hat{\mathcal{O}}_9 = \hat{\mathbf{S}}_\chi \cdot (\hat{\mathbf{S}}_N \times i\hat{\mathbf{q}}/m_N)$, $\mathbb{1}_\chi$ denotes the identity in the χ spin space, and $\hat{\mathbf{S}}_\chi = \boldsymbol{\sigma}/2$ is the χ spin operator. The potential $\mathcal{V}_{\nu r}^{(1/2)}$ allows to calculate the amplitude for WIMP-nucleus scattering, $\mathcal{M}_{\text{NR};A}^{(1/2)}$, through an equation analogous to Eq. (5). The WIMP-nucleus scattering cross section is now given by

$$\frac{d\sigma^{(1/2)}}{dE_R} = \frac{2m_A}{8\pi v^2(2J+1)} \sum_{\text{spins}} |\mathcal{M}_{\text{NR};A}^{(1/2)}|^2. \quad (9)$$

Numerically, we find that $\hat{\mathcal{O}}_7$ is the leading operator in Eq. (9) in the dark matter particle mass range around 50 GeV. We will refer to a scenario where dark matter has spin 1/2 and the potential responsible for WIMP-nucleon interactions is $\mathcal{V}_{\nu r}^{(1/2)} = c_7 \eta^{r\dagger} \hat{\mathcal{O}}_7 \eta^r$, $c_7 \in \mathbb{R}$, as ‘‘WIMP spin hypothesis $\mathcal{H}_7^{s=1/2}$ ’’.

C. Spin 0 dark matter

The most general renormalizable Lagrangian for scalar mediation of spin 0 WIMP interactions with quarks is given by

$$\begin{aligned} \mathcal{L}_{\text{int};\phi}^{(0)} &= -g_1 m_S S^\dagger S \phi - \frac{g_2}{2} S^\dagger S \phi^2 - h_1 \bar{q} q \phi - i h_2 \bar{q} \gamma^5 q \phi \\ &\quad - \frac{\lambda_S}{2} (S^\dagger S)^2 - \frac{m_\phi \mu_1}{3} \phi^3 - \frac{\mu_2}{4} \phi^4, \end{aligned} \quad (10)$$

where S is a complex scalar field describing a stable spin 0 WIMP and ϕ is a real scalar mediating the WIMP-quark interaction. The coupling constants $g_1, g_2, h_1, h_2, \lambda_S, \mu_1$ and μ_2 are assumed to be real. We denote by m_S and m_ϕ the dark matter particle and mediator mass, respectively. The most general renormalizable Lagrangian for vector mediation of spin 0 WIMP interactions with quarks is given by

$$\begin{aligned} \mathcal{L}_{\text{int};G_\nu}^{(0)} &= -\frac{g_3}{2} S^\dagger S G_\mu G^\mu - i g_4 (S^\dagger \partial_\mu S - \partial_\mu S^\dagger S) G^\mu \\ &\quad - h_3 (\bar{q} \gamma_\mu q) G^\mu - h_4 (\bar{q} \gamma_\mu \gamma^5 q) G^\mu \\ &\quad - \frac{\lambda_S}{2} (S^\dagger S)^2 - \frac{\lambda_G}{4} (G_\mu G^\mu)^2, \end{aligned} \quad (11)$$

TABLE II. Summary of the four WIMP spin hypotheses considered in this work.

Hypothesis	WIMP spin	Interaction operator
$\mathcal{H}_1^{s=0}$	0	$\hat{\mathcal{O}}_1$
$\mathcal{H}_{10}^{s=0}$	0	$\hat{\mathcal{O}}_{10}$
$\mathcal{H}_7^{s=1/2}$	1/2	$\hat{\mathcal{O}}_7$
$\mathcal{H}_5^{s=1}$	1	$\hat{\mathcal{O}}_5$

where the notation is the same as above, but now the WIMP-quark interaction is mediated by a vector field G_μ of mass m_G . The coupling constants g_3, g_4, h_3, h_4 and λ_G are assumed to be real.

Despite the variety of terms appearing in Eqs. (10) and (11), in the nonrelativistic limit only two WIMP-nucleon interaction operators can arise as leading operators if dark matter has spin 0. Strictly speaking, this is only true when renormalization group effects are taken into account [54–56]. The scattering of spin 0 WIMPs by free nucleons is therefore fully characterized by the following nonrelativistic potential

$$\mathcal{V}^{(0)} = (c_1 \hat{\mathcal{O}}_1 + c_{10} \hat{\mathcal{O}}_{10}), \quad (12)$$

where $\hat{\mathcal{O}}_1 = \mathbb{1}_\chi \mathbb{1}_N$ and $\hat{\mathcal{O}}_{10} = i\hat{\mathbf{q}}/m_N \cdot \hat{\mathbf{S}}_N \mathbb{1}_\chi$. For spin 0 dark matter, $\mathbb{1}_\chi$ is simply equal to 1. The differential cross section for WIMP-nucleus scattering is now given by

$$\frac{d\sigma^{(0)}}{dE_R} = \frac{2m_A}{4\pi v^2(2J+1)} \sum_{\text{spins}} |\mathcal{M}_{\text{NR};A}^{(0)}|^2 \quad (13)$$

where the amplitude $\mathcal{M}_{\text{NR};A}^{(0)}$ is obtained by inserting the potential $\mathcal{V}^{(0)}$ into an equation analogous to Eq. (5). The coupling constants c_1 and c_{10} in Eq. (12) can be expressed in terms of the coupling constants in Eqs. (10) and (11). We will refer to a scenario where dark matter has spin 0 and the potential responsible for WIMP-nucleon interactions is the one in Eq. (12) as “WIMP spin hypothesis $\mathcal{H}_1^{s=0}$,” if $c_{10} = 0$, and as “WIMP spin hypothesis $\mathcal{H}_{10}^{s=0}$,” if $c_1 = 0$. For simplicity, in this investigation we will neglect the case where $c_1 \neq 0$ and $c_{10} \neq 0$ simultaneously. For later convenience, the four WIMP spin hypotheses introduced in this section are summarized in Table II.

D. Directional detection

In this section, we briefly review the basic concepts of directional dark matter detection, linking the differential cross section for WIMP-nucleus scattering to the observable rate of nuclear recoil events.

The angular distribution of WIMP-induced nuclear recoils in low-background detectors is expected to be anisotropic. Anisotropies are expected since WIMPs

preferentially reach the Earth from a direction opposite to Earth’s motion in the galactic rest frame [23]. Dark matter directional detectors have been designed to search for anisotropy patterns in the sphere of nuclear recoil directions. The double differential rate of nuclear recoil events per unit detector mass is given by

$$\frac{d^2\mathcal{R}}{dE_R d\Omega} = \kappa_\chi \int d^3\mathbf{v} \delta(\mathbf{v} \cdot \mathbf{w} - w_q) f(\mathbf{v} + \mathbf{v}_\oplus(t)) v^2 \frac{d\sigma}{dE_R} \quad (14)$$

for $(w_q + |\mathbf{v}_\oplus| \cos\theta) < v_{\text{esc}}$ and zero otherwise. In Eq. (14), $\kappa_\chi = \rho_\chi / (2\pi m_\chi m_A)$, $\rho_\chi \approx 0.4 \text{ GeV cm}^{-3}$ is the local dark matter density [57], \mathbf{w} is a unit vector pointing toward the direction of nuclear recoil, $w_q = q / (2\mu_\chi \lambda)$ is the minimum velocity $|\mathbf{v}| = v$ accessible in the scattering, m_A is the target nucleus mass, and $\mathbf{v}_\oplus(t)$ is the time-dependent Earth’s velocity in the galactic rest frame. For the differential cross section $d\sigma/dE_R$, we use Eqs. (6), (9) or (13), depending on the WIMP spin. Assuming azimuthal symmetry around the direction of $\mathbf{v}_\oplus(t)$, $d\Omega = 2\pi d\cos\theta$. The angle θ is measured with respect to $\mathbf{v}_\oplus(t)$. For the velocity distribution of WIMPs in the halo, $f(\mathbf{v} + \mathbf{v}_\oplus(t))$, we assume a Gaussian function truncated at the escape velocity $v_{\text{esc}} = 533 \text{ km s}^{-1}$. We set the local standard of rest velocity to 220 km s^{-1} [58,59]. In the simulations of Sec. III, we focus on hypothetical detectors made of CF_4 , and use nuclear response functions computed in [44]. Integrating Eq. (14) over all recoil directions, we find the normalized nuclear recoil energy spectrum

$$\mathcal{P}(E_R) = 2\pi N \int_{|\cos\theta| < 1} d\cos\theta \left(\frac{d^2\mathcal{R}}{dE_R d\Omega} \right). \quad (15)$$

The constant N is defined by $\int_{E_{\text{th}}}^{E_{\text{max}}} dE_R \mathcal{P}(E_R) = 1$, where $E_{\text{max}} = 50 \text{ keV}$ and E_{th} is the energy threshold. Integrating Eq. (14) between E_{th} and 50 keV , we obtain the angular distribution of nuclear recoils

$$\mathcal{Q}(\cos\theta) = 2\pi N \int_{E_{\text{th}}}^{E_{\text{max}}} dE_R \left(\frac{d^2\mathcal{R}}{dE_R d\Omega} \right). \quad (16)$$

For the threshold E_{th} , we consider the benchmark values 5 keV and 20 keV .

Equation (16) peaks at $\cos\theta = -1$ or at $\cos\theta > -1$, depending on whether $d\sigma/dE_R \propto 1/v^2$ or it scales with v differently [36,37,60]. In the latter case, ringlike features in the sphere of nuclear recoil directions are expected. If dark matter has spin 0, $d\sigma^{(0)}/dE_R \propto 1/v^2$, and no rings are expected. This information can be used to reject the spin 0 WIMP hypothesis in favor of alternative WIMP spin values. It is important to stress that in this work we focus on ringlike features in $\mathcal{Q}(\cos\theta)$, and not in the double differential rate $d^2\mathcal{R}/dE_R d\Omega$. Ringlike features in $d^2\mathcal{R}/dE_R d\Omega$ have been

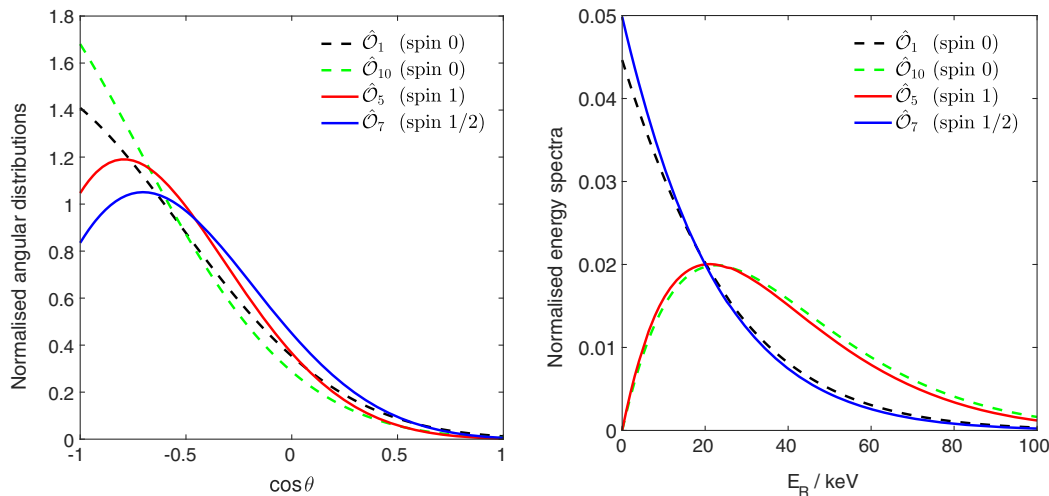


FIG. 1. Left panel. Normalized angular distribution of signal events as a function of the nuclear recoil direction for selected WIMP-nucleon interactions. For spin 0 WIMPs, most of the nuclear recoils are expected at $\cos\theta = -1$, i.e., in a direction opposite to the Earth’s motion in the galactic rest frame. For WIMP-nucleon interactions which are illustrative for spin 1 or spin 1/2 dark matter, most of the nuclear recoil events are expected in rings around $\cos\theta = -1$. Right panel. Normalized energy spectrum of signal events as a function of the nuclear recoil energy for selected WIMP-nucleon interactions.

identified previously in an analysis of the $\hat{\mathcal{O}}_1$ operator [61] or of inelastic exothermic dark matter [62]. However, such rings in $d^2\mathcal{R}/dE_R d\Omega$ cancel out after integrating over a sufficiently large energy bin, as it is shown below in the left panel of Fig. 1, and are therefore not relevant in the context of WIMP spin model selection.

III. WIMP SPIN MODEL SELECTION

We now introduce our approach to WIMP spin model selection. Our approach relies on the framework introduced in Sec. II and on the hypothetical detection of nuclear recoil events at future directional detection experiments.

A. Methodology

Our approach to WIMP spin model selection consists of two stages. In a first stage, we identify the WIMP-nucleon interaction operators that can be generated—for a given WIMP spin value—in the nonrelativistic limit of renormalizable single-mediator models for dark matter-quark interactions. In a second stage, we simulate and analyze data of directional detection experiments to assess whether the identified interactions, and therefore the assumed WIMP spin value, can be rejected in favor of an alternative hypothesis. In so doing, we also quantify the statistical significance of the rejection.

In this work we focus on the prospects for rejecting the spin 0 WIMP hypothesis, leaving the case of higher WIMP spin values for future studies. As already mentioned in Sec. II, $\hat{\mathcal{O}}_1$ and $\hat{\mathcal{O}}_{10}$ are the only operators that can arise as leading operators from the nonrelativistic limit of renormalizable theories for spin 0 dark matter. Therefore, rejecting the spin 0 WIMP hypothesis is

equivalent to rejecting the interaction operators $\hat{\mathcal{O}}_1$ and $\hat{\mathcal{O}}_{10}$ in favor of alternative interactions. Alternative interactions considered in the present work are $\hat{\mathcal{O}}_5$, which is specific to spin 1 dark matter, and $\hat{\mathcal{O}}_7$, which can arise from renormalizable spin 1/2 WIMP models. The purpose of this work is therefore to compare nuclear recoil energy spectra and angular distributions generated by $\hat{\mathcal{O}}_1$, $\hat{\mathcal{O}}_{10}$ and $\hat{\mathcal{O}}_7$ ($\hat{\mathcal{O}}_5$) with data from next generation directional detection experiments, and through this comparison assess under which conditions the spin 0 WIMP hypothesis can be rejected in favor of the alternative spin 1/2 (1) WIMP hypothesis. Notice that a model-independent rejection of the spin 0 hypothesis is not possible, since ringlike features are operator dependent.

The feasibility of our method is illustrated in Fig. 1. The left panel shows the normalized angular distribution of recoil events, $\mathcal{Q}(\cos\theta)$, for selected WIMP-nucleon interactions. $\mathcal{Q}(\cos\theta)$ significantly depends on the dark matter particle spin. If WIMPs have spin 0, most of the nuclear recoils are expected at $\cos\theta = -1$, i.e., in a direction opposite to the Earth’s motion in the galactic rest frame. In contrast, for WIMP-nucleon interactions which are illustrative for spin 1 or spin 1/2 dark matter, such as for example the interactions $\hat{\mathcal{O}}_5$ and $\hat{\mathcal{O}}_7$, most of the nuclear recoil events are expected in rings around $\cos\theta = -1$. Therefore, the search for ringlike features in the sphere of nuclear recoil directions can be used as a tool to reject the hypothesis of spin 0 dark matter. The right panel in Fig. 1 shows the normalized energy spectrum $\mathcal{P}(E_R)$ of selected WIMP-nucleon interactions. The energy spectra of the operators $\hat{\mathcal{O}}_1$ and $\hat{\mathcal{O}}_7$ have similar shapes. The same is true for the energy spectra of the operators $\hat{\mathcal{O}}_5$ and $\hat{\mathcal{O}}_{10}$.

B. Simulations

For simplicity, from now onwards we adopt the notation introduced in Sec. II, Table II, when referring to model hypotheses.

In order to validate the method for WIMP spin model selection that we have proposed in Sec. III A, and assess the prospects for rejecting the spin 0 WIMP hypothesis with directional detectors, we use simulated data. Data are separately simulated under the hypotheses that we would like to reject, $\mathcal{H}_1^{s=0}$ and $\mathcal{H}_{10}^{s=0}$, and under the alternative hypotheses $\mathcal{H}_5^{s=1}$ and $\mathcal{H}_7^{s=1/2}$. In each simulation, the WIMP mass is set to $m_\chi = 100$ GeV, and the coupling constants c_1, c_{10}, c_5 or c_7 to the constant c . The constant c is fixed by the requirement $N_{\text{th}}(m_\chi, c) = N_S$, where N_S is the desired number of signal events, and N_{th} the corresponding theoretical expectation (calculable from $\mathcal{P}(E_R)$ in Eq. (15)). The total number of expected nuclear recoil events, N_T , is given by $N_T = N_S + N_B$, where N_B is the expected number of background events. In the numerical calculations, we assume $N_B = 5$ background events uniformly distributed in energy and nuclear recoil directions [63]. Finally, the dark matter particle spin is set to 0, 1/2 or 1, depending on whether data are simulated under the hypothesis $\mathcal{H}_1^{s=0}$ and $\mathcal{H}_{10}^{s=0}$, $\mathcal{H}_7^{s=1/2}$ or $\mathcal{H}_5^{s=1}$, respectively. Having fixed the model parameters as explained above, nuclear recoil energies and directions are sampled as explained below. The nuclear recoil energy interval ($E_{\text{th}} - 50$) keV is divided in $N_{\text{bins}} = 3$ bins of equal size. The observed number of events in the j -th energy bin, m_j , is sampled from a Poisson distribution of mean equal to the number of expected events in that bin, $M_{T,j}$. Signal and background events contribute to $M_{T,j}$. For simplicity, here we assume perfect energy resolution. The sphere of nuclear recoil directions is discretized according to HEALPix's pixelization scheme [64]. We assume $N_{\text{pix}} = 768$ pixels, corresponding to an angular resolution of about 15° (FWHM) [63]. The observed number of nuclear recoils in the i -th pixel, n_i , is sampled from a Poisson distribution

of mean equal to the number of expected nuclear recoils in that pixel, $N_{T,i}$. Signal and background events contribute to $N_{T,i}$. As an illustrative example of our simulations, the Mollweide projection of 1000 nuclear recoil events simulated under the $\mathcal{H}_5^{s=1}$ ($\mathcal{H}_7^{s=1/2}$) hypothesis is reported in left (right) panel of Fig 2.

C. Analysis

Our goal is to calculate the statistical significance with which the hypotheses $\mathcal{H}_1^{s=0}$ and $\mathcal{H}_{10}^{s=0}$ can be rejected when nuclear recoil energies and directions are generated under $\mathcal{H}_5^{s=1}$ or $\mathcal{H}_7^{s=1/2}$. We express the statistical significance of the rejection in terms of p -values, and present results as a function of the number of signal events N_S . When $\mathcal{H}_1^{s=0}$ and $\mathcal{H}_{10}^{s=0}$ can be rejected with a given statistical significance, the spin 0 WIMP hypothesis can be rejected with the same statistical significance. Our calculations are based upon the following test statistics

$$q_0 = -2 \ln \left[\frac{\mathcal{L}(\mathbf{d} | \hat{\Theta}_B, \mathcal{H}_B)}{\mathcal{L}(\mathbf{d} | \hat{\Theta}_A, \mathcal{H}_A)} \right], \quad (17)$$

where \mathcal{L} is the likelihood function of the simulated data \mathbf{d} , $\Theta_A = (m_\chi, c_A)$ and $\Theta_B = (m_\chi, c_B)$ are the dark matter particle mass and coupling constants characterizing the hypotheses \mathcal{H}_A and \mathcal{H}_B , respectively, and $\hat{\Theta}_A$ ($\hat{\Theta}_B$) is the value of Θ_A (Θ_B) that maximizes the likelihood \mathcal{L} when fitting the data \mathbf{d} under the hypothesis \mathcal{H}_A (\mathcal{H}_B). Specifically, here we are interested in the four scenarios:

- (1) $\mathcal{H}_A = \mathcal{H}_5^{s=1}$, $\mathcal{H}_B = \mathcal{H}_1^{s=0}$;
- (2) $\mathcal{H}_A = \mathcal{H}_5^{s=1}$, $\mathcal{H}_B = \mathcal{H}_{10}^{s=0}$;
- (3) $\mathcal{H}_A = \mathcal{H}_7^{s=1/2}$, $\mathcal{H}_B = \mathcal{H}_1^{s=0}$;
- (4) $\mathcal{H}_A = \mathcal{H}_7^{s=1/2}$, $\mathcal{H}_B = \mathcal{H}_{10}^{s=0}$.

Accordingly, the coupling constants c_A and c_B in Eq. (17) can be c_1, c_{10}, c_5 or c_7 , depending on the scenario in analysis. For \mathcal{L} , we assume the product of Poisson distributions

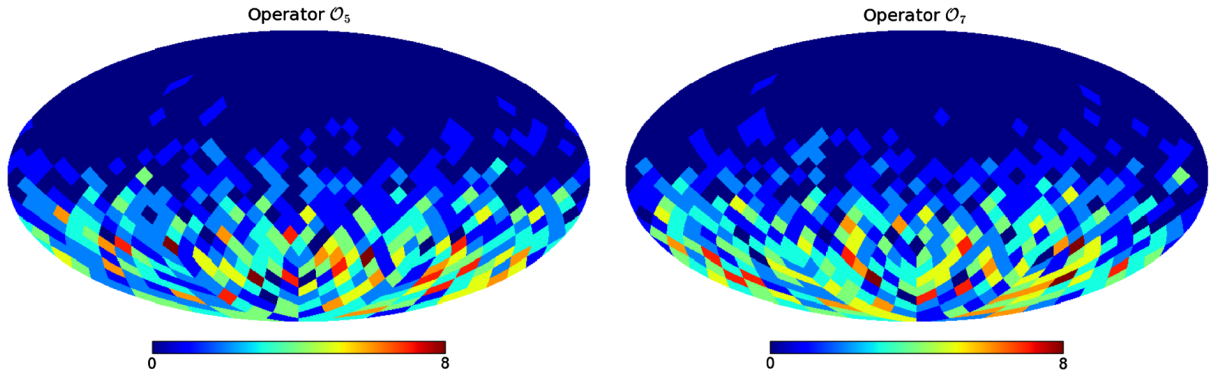


FIG. 2. Mollweide projection of 1000 nuclear recoil events simulated under the $\mathcal{H}_5^{s=1}$ (left panel) and $\mathcal{H}_7^{s=1/2}$ (right panel) hypotheses. The sphere of nuclear recoil direction has been discretized according to HEALPix's pixelization scheme. In the simulation, we have assumed $N_{\text{pix}} = 768$ pixels. The color code follows the number of recoil events per pixel.

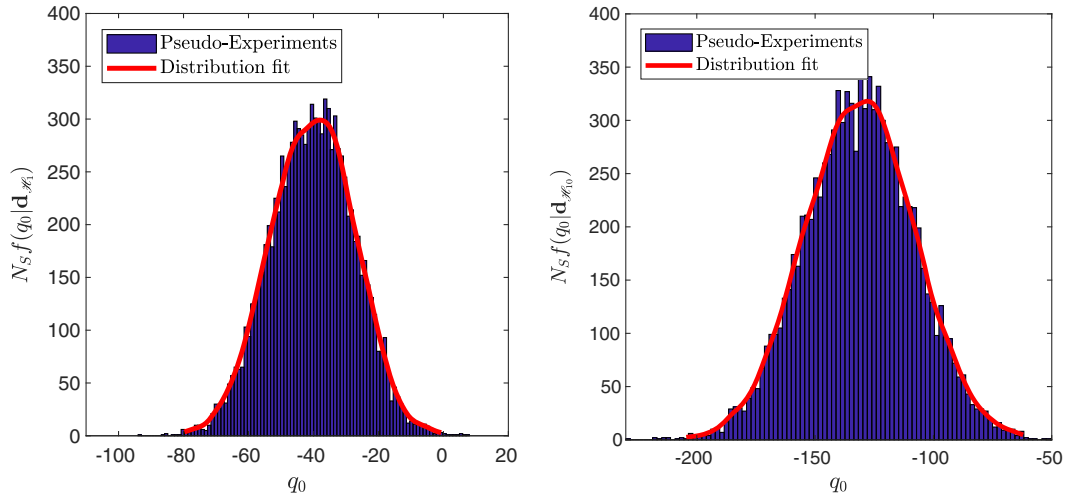


FIG. 3. Probability density functions times N_S : $N_S f(q_0 | \mathbf{d}_{\mathcal{H}_1^{s=0}})$ in left panel and $N_S f(q_0 | \mathbf{d}_{\mathcal{H}_{10}^{s=0}})$ in the right panel. Histograms have been obtained from 10000 pseudo-experiments characterized by $N_S = 1000$ and $\mathcal{H}_A = \mathcal{H}_7^{s=1/2}$. Nuclear recoil energies and directions have been simulated as explained in Sec. III. For illustrative purposes, a fitting distribution has been superimposed to the histograms.

$$\mathcal{L}(\mathbf{d} | \Theta, \mathcal{H}) = \prod_{i=1}^{N_{\text{pix}}} \prod_{j=1}^{N_{\text{bins}}} \frac{N_{T,i}(\Theta, \mathcal{H})^{n_i(\mathbf{d})}}{n_i(\mathbf{d})!} \frac{M_{T,j}(\Theta, \mathcal{H})^{m_j(\mathbf{d})}}{m_j(\mathbf{d})!} \times e^{-[N_{T,i}(\Theta, \mathcal{H}) + M_{T,j}(\Theta, \mathcal{H})]}, \quad (18)$$

where the pair (Θ, \mathcal{H}) can be one of the four combinations listed above.

Given the test statistics in Eq. (17), the statistical significance with which $\mathcal{H}_1^{s=0}$ and $\mathcal{H}_{10}^{s=0}$ can be rejected is computed as follows. For each value of N_S that we consider, we simulate 1000 pseudo-experiments under the hypothesis \mathcal{H}_A , i.e. $\mathcal{H}_5^{s=1}$ or $\mathcal{H}_7^{s=1/2}$. We then construct the probability density function (PDF) of q_0 under \mathcal{H}_A , $f(q_0 | \mathbf{d}_{\mathcal{H}_A})$, and calculate the associated median, q_{med} . q_{med} represents the “typical” value of q_0 when WIMPs interacts according to \mathcal{H}_A . Subsequently, we simulate 10000 pseudo-experiments under the hypothesis \mathcal{H}_B , i.e. $\mathcal{H}_1^{s=0}$ or $\mathcal{H}_{10}^{s=0}$. From these simulations we obtain the PDF of q_0 under \mathcal{H}_B , $f(q_0 | \mathbf{d}_{\mathcal{H}_B})$, and calculate the associated p -value:

$$p = \int_{q_{\text{med}}}^{\infty} dq_0 f(q_0 | \mathbf{d}_{\mathcal{H}_B}). \quad (19)$$

The p -value in Eq. (19) is our measure of the statistical significance with which the hypotheses $\mathcal{H}_1^{s=0}$ and $\mathcal{H}_{10}^{s=0}$ can be rejected as a function of N_S . For $N_S = 1000$ and $\mathcal{H}_A = \mathcal{H}_7^{s=1/2}$, the PDFs $f(q_0 | \mathbf{d}_{\mathcal{H}_1^{s=0}})$ and $f(q_0 | \mathbf{d}_{\mathcal{H}_{10}^{s=0}})$ are reported in the left and right panels of Fig. 3, respectively.

IV. RESULTS

From Eq. (19), we now calculate as a function of N_S the p -values corresponding to the four already mentioned scenarios:

- (1) $\mathcal{H}_A = \mathcal{H}_5^{s=1}$, $\mathcal{H}_B = \mathcal{H}_1^{s=0}$;
- (2) $\mathcal{H}_A = \mathcal{H}_5^{s=1}$, $\mathcal{H}_B = \mathcal{H}_{10}^{s=0}$;
- (3) $\mathcal{H}_A = \mathcal{H}_7^{s=1/2}$, $\mathcal{H}_B = \mathcal{H}_1^{s=0}$;
- (4) $\mathcal{H}_A = \mathcal{H}_7^{s=1/2}$, $\mathcal{H}_B = \mathcal{H}_{10}^{s=0}$.

Through this calculation, we quantitatively assess the prospects for rejecting the spin 0 WIMP hypothesis at next generation directional detection experiments. Our default choices for energy threshold and dark matter particle mass are $E_{\text{th}} = 20$ keV and $m_\chi = 100$ GeV, respectively. A lower energy threshold, i.e. $E_{\text{th}} = 5$ keV, is considered in Sec. IV C.

A. Spin 1 vs spin 0 hypothesis

In this first application of our method for WIMP spin model selection, we aim at rejecting the spin 0 WIMP hypothesis in favor of the alternative hypothesis $\mathcal{H}_A = \mathcal{H}_5^{s=1}$, according to which dark matter has spin 1 and interacts with nucleons through the operator $\hat{\mathcal{O}}_5$. By simulating nuclear recoil energies and directions as explained in Sec. III B, we derive the PDFs of the test statistics q_0 in Eq. (17) under the hypothesis $\mathcal{H}_A = \mathcal{H}_5^{s=1}$, and $\mathcal{H}_B = \mathcal{H}_1^{s=0}$ or $\mathcal{H}_B = \mathcal{H}_{10}^{s=0}$. From the former PDF we obtain q_{med} , from the latter one we calculate the p -value of the alternative hypothesis $\mathcal{H}_A = \mathcal{H}_5^{s=1}$ as a function of the number of signal events N_S using Eq. (19). To each p -value that we obtain in this manner, we associate the corresponding statistical significance $Z = \Phi^{-1}(1 - p)$ expressed in units of the standard deviation σ of a fictitious Gaussian distribution Φ [65]. Results for this calculation are reported in the left panel of Fig. 4. This figure shows the p -value and associated statistical significance of the alternative hypothesis $\mathcal{H}_A = \mathcal{H}_5^{s=1}$ as a function of the number of signal events N_S . The blue curve corresponds to the case $\mathcal{H}_B = \mathcal{H}_1^{s=0}$, whereas the green curve has been obtained for

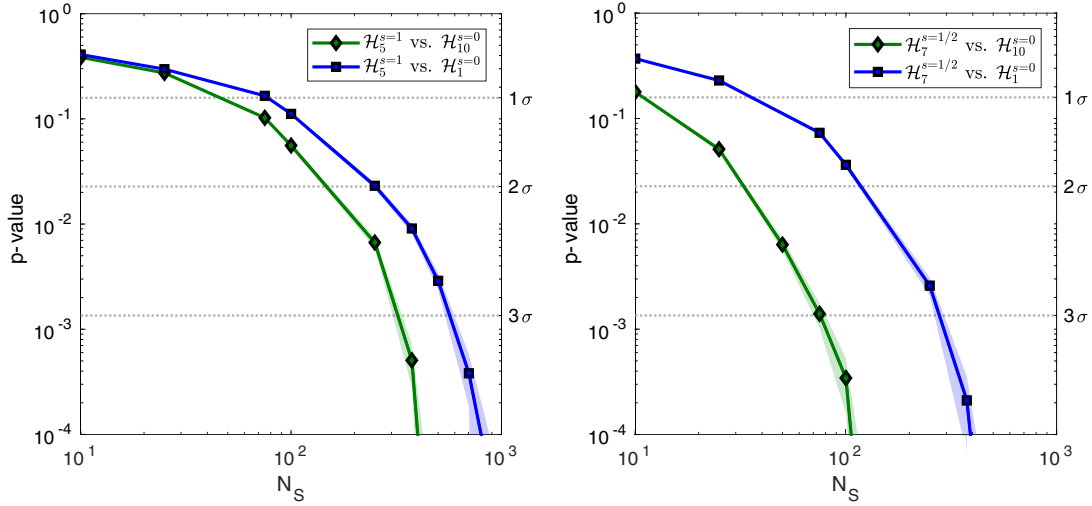


FIG. 4. Statistical significance with which nuclear recoil energies and directions, \mathbf{d} , simulated under the hypothesis $\mathcal{H}_5^{s=1}$ (left panel) and $\mathcal{H}_7^{s=1/2}$ (right panel) allow to reject the hypotheses $\mathcal{H}_1^{s=0}$ (blue curve) and $\mathcal{H}_{10}^{s=0}$ (green curve) as a function of the number of signal events N_S . For values of N_S such that both $\mathcal{H}_1^{s=0}$ and $\mathcal{H}_{10}^{s=0}$ can be rejected, the spin 0 WIMP hypothesis can also be rejected. To each curve in the figure, we have associated shaded binomial error bands, i.e. $\Delta p = \sqrt{p(1-p)/N}$, with $N = 10000$.

$\mathcal{H}_B = \mathcal{H}_{10}^{s=0}$. A 2σ rejection of the $\mathcal{H}_1^{s=0}$ hypothesis requires about 150 signal events, whereas about 250 signal events are needed in order to reject the hypothesis $\mathcal{H}_{10}^{s=0}$ at the same level of statistical significance. From the results reported in this section, we conclude that, if $E_{\text{th}} = 20$ keV, about 250 signal events are needed in order to reject the spin 0 WIMP hypothesis with a statistical significance of 2σ .

B. Spin 1/2 vs spin 0 hypothesis

In this subsection, we aim at rejecting the spin 0 WIMP hypothesis in favor of the alternative hypothesis $\mathcal{H}_A = \mathcal{H}_7^{s=1/2}$, according to which dark matter has spin 1/2 and interacts with nucleons through the operator $\hat{\mathcal{O}}_7$.

Following the same procedure already illustrated in Sec. III C, we compute the p -value and associated statistical significance of the hypothesis $\mathcal{H}_7^{s=1/2}$, separately considering $\mathcal{H}_B = \mathcal{H}_1^{s=0}$ and $\mathcal{H}_B = \mathcal{H}_{10}^{s=0}$. The right panel in Fig. 4 shows the p -values obtained from this calculation as a function of the number of signal events, N_S . As for the left panel in the same figure, the blue curve corresponds to the case $\mathcal{H}_B = \mathcal{H}_1^{s=0}$, whereas the green curve has been obtained for $\mathcal{H}_B = \mathcal{H}_{10}^{s=0}$. Also in this case, the y -axis reports the number of standard deviations, σ , associated with a given p -value. A 2σ rejection of the $\mathcal{H}_1^{s=0}$ hypothesis requires about 150 signal events. At the same time, about 30 signal events are needed in order to reject the hypothesis

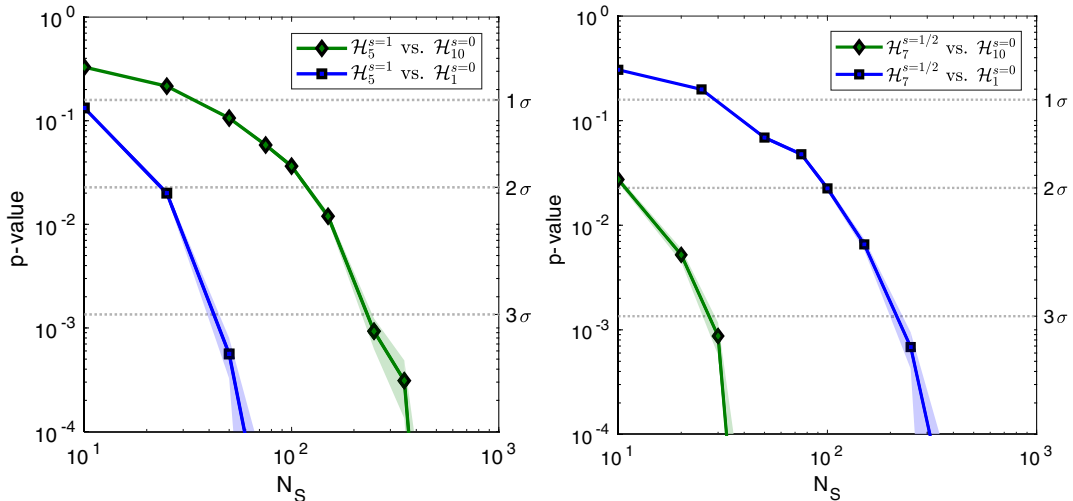


FIG. 5. Same as for Fig. 4, but now with $E_{\text{th}} = 5$ keV instead of $E_{\text{th}} = 20$ keV.

$\mathcal{H}_{10}^{s=0}$ at the same level of statistical significance. Compared to the case $\mathcal{H}_A = \mathcal{H}_5^{s=1}$, less signal events are needed in order to reject the spin 0 WIMP hypothesis in favor of the alternative hypothesis $\mathcal{H}_A = \mathcal{H}_7^{s=1/2}$. This result is expected, and related to the shape of $\mathcal{Q}(\cos\theta)$, which peaks at values of $\cos\theta$ significantly different from -1 for $\mathcal{H}_A = \mathcal{H}_7^{s=1/2}$.

C. Lowering the energy threshold

Results presented in the previous subsections assume $E_{\text{th}} = 20$ keV. Because of this choice for the energy threshold, energy information played a secondary role in the previous analyses, as one can also see from the right panel in Fig. 1. In this subsection, we recalculate the p values reported in Fig. 4, now with the lower energy threshold, $E_{\text{th}} = 5$ keV. Notice that $E_{\text{th}} = 5$ keV is not a representative value for currently operating directional detection experiments. Comparable values for E_{th} might only be reached through significant improvements of present technologies. Performing WIMP spin model selection, a lower threshold energy allows to exploit differences in the recoil energy spectra that are highlighted in the right panel of Fig. 1. Results of our low-threshold analysis are reported in Fig. 5. By lowering the energy threshold and accounting for energy information, we find a significant decrease in the p value, which implies a more effective rejection of the spin 0 WIMP hypothesis. For instance, when data are generated under the $\mathcal{H}_7^{s=1/2}$ hypothesis, a 2σ rejection of the $\mathcal{H}_1^{s=0}$ hypothesis requires $N_S \approx 100$, and $N_S \approx 10$ signal events are needed in order to reject the hypothesis $\mathcal{H}_{10}^{s=0}$ with a statistical significance at the 2σ level. At the same time, when data are generated under the $\mathcal{H}_5^{s=1}$ hypothesis, a 2σ rejection of the $\mathcal{H}_1^{s=0}$ ($\mathcal{H}_{10}^{s=0}$) hypothesis requires $N_S \approx 25$ ($N_S \approx 150$).

V. CONCLUSION

We have computed the number of signal events needed to reject the hypothesis of spin 0 WIMP at next generation directional detection experiments exploiting CF_4 as a target material. Assuming an energy threshold of 5 keV, we have found that about 100 nuclear recoils will be enough to enable a 2σ rejection of the spin 0 dark matter hypothesis in favor of alternative hypotheses where dark matter has spin 1 or 1/2. For comparison, about 100 signal events are expected in a CF_4 detector operating at a pressure of 30 torr with an exposure of approximately 26,000 cubic-meter-detector days for WIMPs of 100 GeV mass and a WIMP-fluorine scattering cross section of 0.25 pb. The DMTPC Collaboration has shown that comparable exposures require an array of cubic meter TPC detectors. [66]. Our results are based upon the following considerations. If the dark matter particle has spin 0, only the operators $\hat{\mathcal{O}}_1$ and $\hat{\mathcal{O}}_{10}$ can arise as leading operators from the nonrelativistic reduction of renormalizable single-mediator models for dark matter-quark interactions. The operators $\hat{\mathcal{O}}_1$ and $\hat{\mathcal{O}}_{10}$ generate angular distributions of nuclear recoil events at directional detection experiments that have a maximum in the direction antiparallel to the Earth's motion in the galactic rest frame. In contrast, interaction operators illustrative for spin 1 and spin 1/2 dark matter can generate angular distributions of nuclear recoil events that peak in rings centered around the direction of the Earth's motion. Following [52], we have denoted these interaction operators by $\hat{\mathcal{O}}_5$ and $\hat{\mathcal{O}}_7$, respectively. Here we have shown that ringlike features in the sphere of nuclear recoil directions are potentially observable at next generation directional detection experiments, and can therefore be used to reject the spin 0 WIMP hypothesis. Directional sensitivity is crucial in this context: p values significantly increase when

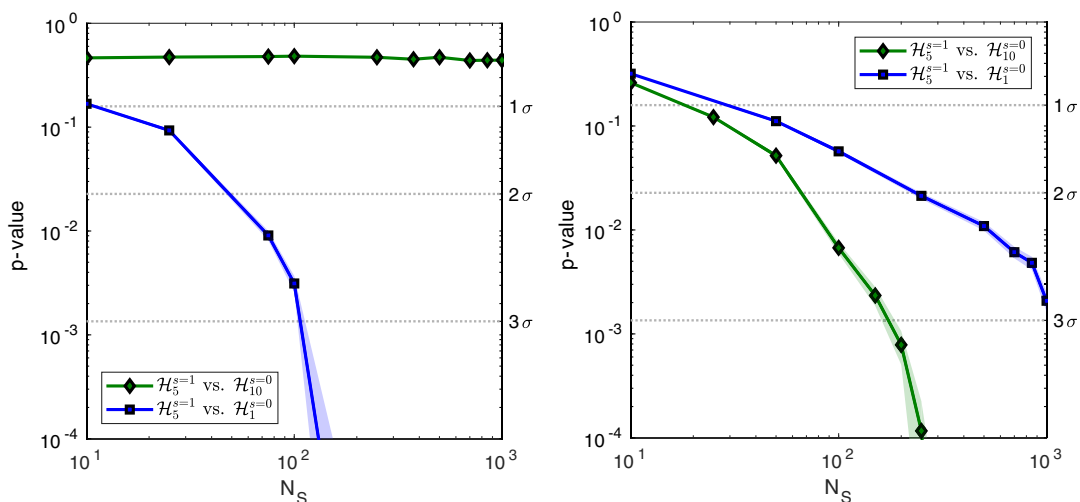


FIG. 6. Same as for Fig. 4, but now with: $E_{\text{th}} = 5$ keV, $E_{\text{max}} = 50$ keV and no angular information (left panel); $E_{\text{th}} = 50$ keV, $E_{\text{max}} = 100$ keV and angular information (right panel).

only energy information is used in the simulations, as illustrated in the left panel of Fig. 6. Here we have focused on next generation low-threshold experiments, but the proposed method remains applicable for larger values of the energy threshold, although the projected sensitivity is in this latter case lower, as one can see from the right panel in Fig. 6.

For completeness, we also provide examples of scenarios in which our method for WIMP spin model selection cannot be applied. In this context, we would like to stress that the operators \hat{O}_1 and \hat{O}_{10} can also be generated if dark matter has spin 1/2 or 1 [47]. Therefore, if dark matter has spin different from zero and interacts with nucleons through the operators \hat{O}_1 and \hat{O}_{10} , rejecting the spin 0 WIMP hypothesis on the basis of directional detection experiments alone is not possible. This constitutes an irreducible limitation for the proposed method. Furthermore, if dark matter has spin different from zero and interacts with nucleons through the operators \hat{O}_4 , \hat{O}_6 , \hat{O}_9 , \hat{O}_{11} no ringlike features are expected in the sphere of nuclear recoils [36,37]. Therefore, rejecting the interactions \hat{O}_1 and \hat{O}_{10} , i.e. the spin 0 WIMP hypothesis, would require comparing different spin hypotheses based on energy information only, which might in turn require very large exposures. Finally, operator evolution might quantitatively affect our conclusions. For example, it could generate the operator \hat{O}_1 as the leading operator in models where only \hat{O}_{10} is predicted at tree level [54–56]. However, since our method for WIMP spin model selection is based upon simultaneously rejecting \hat{O}_1 and \hat{O}_{10} , in these cases operator evolution would not qualitatively change our conclusions.

Let us also comment on the generality of the proposed method for WIMP spin model selection. Here we have simulated data on nuclear recoil events assuming \hat{O}_5 and \hat{O}_7 as underlying interactions. Since the operators \hat{O}_8 , \hat{O}_{13} and \hat{O}_{14} give rise to similar ringlike features in the sphere of nuclear recoil directions [36,37], the results found in this work also qualitatively apply to the case of spin 1/2 or 1 WIMPs interacting with nucleons through one of the three interaction operators mentioned above. Finally, we briefly comment on the applicability of the proposed method to the rejection of other WIMP spin values. For spin 1/2 or 1 WIMPs, a variety of WIMP-nucleon interaction operators can arise from the nonrelativistic reduction of renormalizable single-mediator models for dark matter-quark interactions [47]. Therefore, rejecting the spin 1/2 or 1 WIMP hypothesis appears to be a more difficult task, although in principle possible to address within the systematic approach presented in this work.

ACKNOWLEDGMENTS

This work has been supported by the Knut and Alice Wallenberg Foundation (PI: Jan Conrad) and is performed in the context of the Swedish Consortium for Direct Detection of Dark Matter (SweDCube). This research has also been supported by the Munich Institute for Astro- and Particle Physics (MIAPP) within the Deutsche Forschungsgemeinschaft (DFG) cluster of excellence “Origin and Structure of the Universe.” Finally, we thank the participants of the MIAPP program “Astro-, Particle and Nuclear Physics of Dark Matter Direct Detection” for many valuable discussions.

-
- [1] P. A. R. Ade *et al.* (Planck Collaboration), *Astron. Astrophys.* **594**, A13 (2016).
 - [2] G. Jungman, M. Kamionkowski, and K. Griest, *Phys. Rep.* **267**, 195 (1996).
 - [3] E. Aprile *et al.* (XENON Collaboration), [arXiv:1705.06655](https://arxiv.org/abs/1705.06655).
 - [4] D. S. Akerib *et al.* (LUX Collaboration), *Phys. Rev. Lett.* **118**, 021303 (2017).
 - [5] A. Tan *et al.* (PandaX-II Collaboration), *Phys. Rev. Lett.* **117**, 121303 (2016).
 - [6] G. Angloher *et al.* (CRESST Collaboration), *Eur. Phys. J. C* **76**, 25 (2016).
 - [7] R. Agnese *et al.* (SuperCDMS Collaboration), *Phys. Rev. Lett.* **116**, 071301 (2016).
 - [8] C. Amole *et al.* (PICO Collaboration), [arXiv:1702.07666](https://arxiv.org/abs/1702.07666).
 - [9] D. S. Akerib *et al.* (LUX Collaboration), [arXiv:1705.03380](https://arxiv.org/abs/1705.03380).
 - [10] E. Aprile *et al.* (XENON Collaboration), *J. Cosmol. Astropart. Phys.* **04** (2016) 027.
 - [11] B. J. Mount *et al.*, [arXiv:1703.09144](https://arxiv.org/abs/1703.09144).
 - [12] J. Aalbers *et al.* (DARWIN Collaboration), *J. Cosmol. Astropart. Phys.* **11** (2016) 017.
 - [13] R. Strauss *et al.*, in *Proceedings, 14th International Conference on Topics in Astroparticle and Underground Physics (TAUP 2015): Torino, Italy, September 7-11, 2015* [*J. Phys. Conf. Ser.* **718**, 042048 (2016)].
 - [14] R. Agnese *et al.* (SuperCDMS Collaboration), *Phys. Rev. D* **95**, 082002 (2017).
 - [15] B. J. Kavanagh, R. Catena, and C. Kouvaris, *J. Cosmol. Astropart. Phys.* **01** (2017) 012.
 - [16] J. Amar *et al.*, in *Proceedings, 14th International Conference on Topics in Astroparticle and Underground Physics (TAUP 2015): Torino, Italy, September 7-11, 2015* [*J. Phys. Conf. Ser.* **718**, 042052 (2016)].
 - [17] G. Angloher *et al.*, *Eur. Phys. J. C* **76**, 441 (2016).
 - [18] E. Barbosa de Souza *et al.* (DM-Ice Collaboration), *Phys. Rev. D* **95**, 032006 (2017).

- [19] F. Froberg (SABRE Collaboration), in *Proceedings, 14th International Conference on Topics in Astroparticle and Underground Physics (TAUP 2015): Torino, Italy, September 7-11, 2015* [*J. Phys. Conf. Ser.* **718**, 042021 (2016)].
- [20] R. Bernabei *et al.* (DAMA, LIBRA Collaborations), *Eur. Phys. J. C* **67**, 39 (2010).
- [21] R. Catena, A. Ibarra, and S. Wild, *J. Cosmol. Astropart. Phys.* **05** (2016) 039.
- [22] F. Mayet *et al.*, *Phys. Rep.* **627**, 1 (2016).
- [23] D. N. Spergel, *Phys. Rev. D* **37**, 1353 (1988).
- [24] J. Battat *et al.* (DRIFT Collaboration), arXiv:1410.7821.
- [25] E. Daw, A. Dorofeev, J. Fox, J. Gauvreau, C. Ghag *et al.*, *EAS Publ. Ser.* **53**, 11 (2012).
- [26] Q. Riffard, J. Billard, G. Bosson, O. Bourrion, O. Guillaudin *et al.*, arXiv:1306.4173.
- [27] D. Santos, G. Bosson, J. Bouly, O. Bourrion, C. Fourel *et al.*, *J. Phys. Conf. Ser.* **469**, 012002 (2013).
- [28] J. B. R. Battat (DMTPC Collaboration), *J. Phys. Conf. Ser.* **469**, 012001 (2013).
- [29] J. Monroe (DMTPC Collaboration), *EAS Publ. Ser.* **53**, 19 (2012).
- [30] K. Miuchi, K. Nakamura, A. Takada, S. Iwaki, H. Kubo *et al.*, *EAS Publ. Ser.* **53**, 33 (2012).
- [31] K. Miuchi, H. Nishimura, K. Hattori, N. Higashi, C. Ida *et al.*, *Phys. Lett. B* **686**, 11 (2010).
- [32] S. Vahsen, H. Feng, M. Garcia-Sciveres, I. Jaegle, J. Kadyk, Y. Nguyen, M. Rosen, S. Ross, T. Thorpe, and J. Yamaoka, *EAS Publ. Ser.* **53**, 43 (2012).
- [33] T. Naka, M. Kimura, M. Nakamura, O. Sato, T. Nakano, T. Asada, Y. Tawara, and Y. Suzuki, *EAS Publ. Ser.* **53**, 51 (2012).
- [34] R. Essig, J. Mardon, and T. Volansky, *Phys. Rev. D* **85**, 076007 (2012).
- [35] A. Drukier, K. Freese, D. Spergel, C. Cantor, G. Church *et al.*, arXiv:1206.6809.
- [36] R. Catena, *J. Cosmol. Astropart. Phys.* **07** (2015) 026.
- [37] B. J. Kavanagh, *Phys. Rev. D* **92**, 023513 (2015).
- [38] J. Fan, M. Reece, and L.-T. Wang, *J. Cosmol. Astropart. Phys.* **11** (2010) 042.
- [39] A. L. Fitzpatrick, W. Haxton, E. Katz, N. Lubbers, and Y. Xu, *J. Cosmol. Astropart. Phys.* **02** (2013) 004.
- [40] M. Cirelli, E. Del Nobile, and P. Panci, *J. Cosmol. Astropart. Phys.* **10** (2013) 019.
- [41] R. Catena and P. Gondolo, *J. Cosmol. Astropart. Phys.* **09** (2014) 045.
- [42] R. Catena, *J. Cosmol. Astropart. Phys.* **09** (2014) 049.
- [43] R. Catena, *J. Cosmol. Astropart. Phys.* **07** (2014) 055.
- [44] R. Catena and B. Schwabe, *J. Cosmol. Astropart. Phys.* **04** (2015) 042.
- [45] R. Catena and P. Gondolo, *J. Cosmol. Astropart. Phys.* **08** (2015) 022.
- [46] R. Catena, *J. Cosmol. Astropart. Phys.* **01** (2017) 059.
- [47] J. B. Dent, L. M. Krauss, J. L. Newstead, and S. Sabharwal, *Phys. Rev. D* **92**, 063515 (2015).
- [48] F. Bishara, J. Brod, B. Grinstein, and J. Zupan, *J. Cosmol. Astropart. Phys.* **02** (2017) 009.
- [49] M. Hoferichter, P. Klos, and A. Schwenk, *Phys. Lett. B* **746**, 410 (2015).
- [50] B. J. Kavanagh, F. S. Queiroz, W. Rodejohann, and C. E. Yaguna, *J. High Energy Phys.* **10** (2017) 059.
- [51] F. S. Queiroz, W. Rodejohann, and C. E. Yaguna, *Phys. Rev. D* **95**, 095010 (2017).
- [52] A. L. Fitzpatrick, W. Haxton, E. Katz, N. Lubbers, and Y. Xu, arXiv:1211.2818.
- [53] P. Klos, J. Menendez, D. Gazit, and A. Schwenk, *Phys. Rev. D* **88**, 083516 (2013); **89**, 029901(E) (2014).
- [54] A. Crivellin, F. D’Eramo, and M. Procura, *Phys. Rev. Lett.* **112**, 191304 (2014).
- [55] F. D’Eramo and M. Procura, *J. High Energy Phys.* **04** (2015) 054.
- [56] F. D’Eramo, B. J. Kavanagh, and P. Panci, *J. High Energy Phys.* **08** (2016) 111.
- [57] R. Catena and P. Ullio, *J. Cosmol. Astropart. Phys.* **08** (2010) 004.
- [58] R. Catena and P. Ullio, *J. Cosmol. Astropart. Phys.* **05** (2012) 005.
- [59] N. Bozorgnia, R. Catena, and T. Schwetz, *J. Cosmol. Astropart. Phys.* **12** (2013) 050.
- [60] H. An, S.-L. Chen, R. N. Mohapatra, S. Nussinov, and Y. Zhang, *Phys. Rev. D* **82**, 023533 (2010).
- [61] N. Bozorgnia, G. B. Gelmini, and P. Gondolo, *J. Cosmol. Astropart. Phys.* **06** (2012) 037.
- [62] N. Bozorgnia, G. B. Gelmini, and P. Gondolo, *J. Cosmol. Astropart. Phys.* **01** (2017) 052.
- [63] J. Billard, F. Mayet, J. F. Macias-Perez, and D. Santos, *Phys. Lett. B* **691**, 156 (2010).
- [64] K. M. Gorski, E. Hivon, A. J. Banday, B. D. Wandelt, F. K. Hansen, M. Reinecke, and M. Bartelman, *Astrophys. J.* **622**, 759 (2005).
- [65] G. Cowan, K. Cranmer, E. Gross, and O. Vitells, *Eur. Phys. J. C* **71**, 1554 (2011); **73**, 2501(E) (2013).
- [66] C. Deaconu, M. Leyton, R. Corliss, G. Druitt, R. Eggleston, N. Guerrero, S. Henderson, J. Lopez, J. Monroe, and P. Fisher, arXiv:1705.05965.