



Photo Public Domain by: USDA

Wildfires & Drought Analysis for the Capital Area Council of Governments

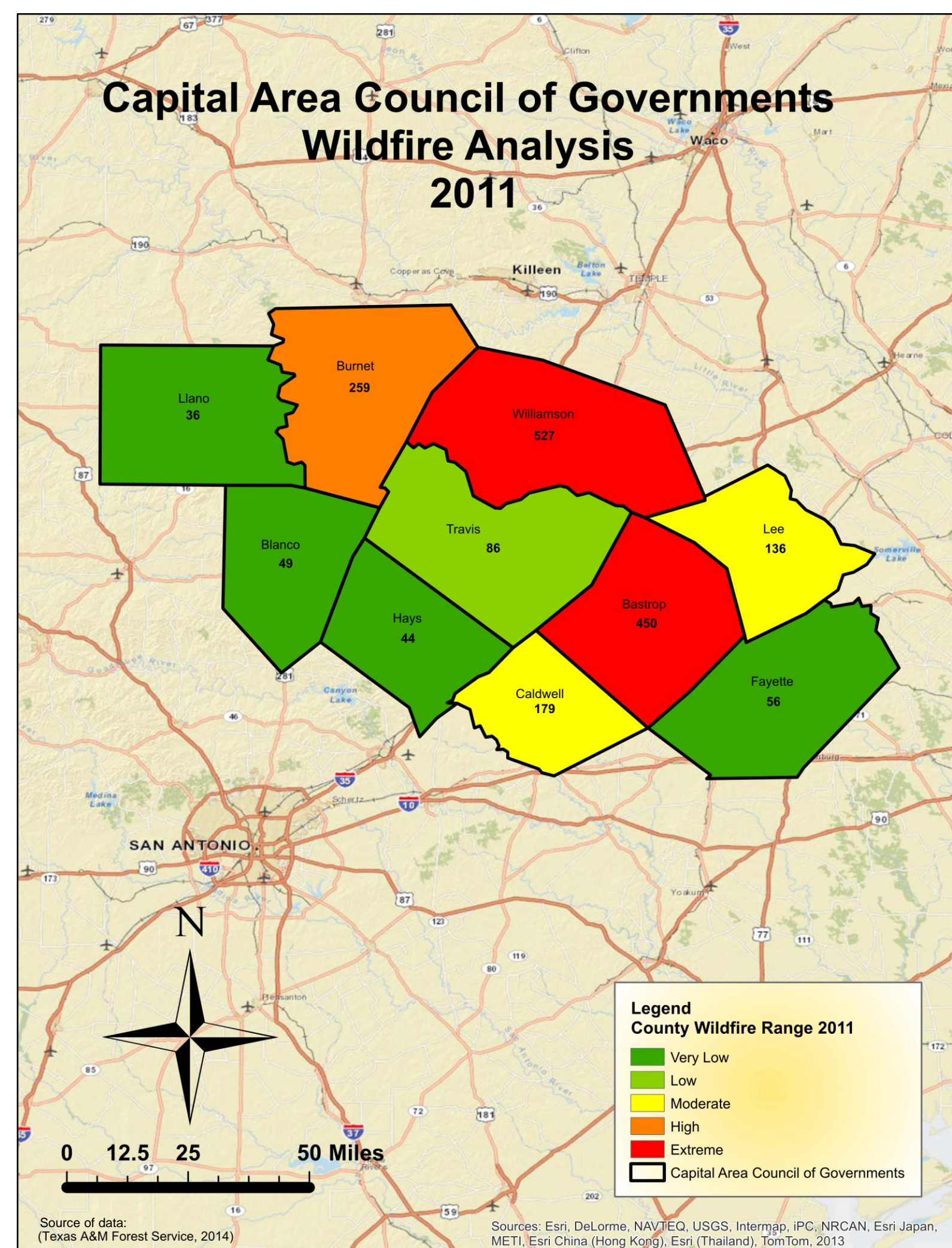
Student: Emmanuel Rubio Perez
 Professor: Dr. James Phelps

An investigation was conducted to unfold the **Wildfire** and **Drought** conditions for the Capital Area Council of Governments located in Central Texas. The development of visuals examines a time period of 10 years, from 2002 to 2012. Resources used incorporated various elements to include the U.S. Drought Monitor, Texas A&M Forest Service, Water Data for Texas Organization, Southern Regional Climate Center, Texas Water Development Board, ArcGIS, and Microsoft Excel. Presented is a lens of what can be happening within your region as a means to planning for future wildfire response, mitigation, and recovery.

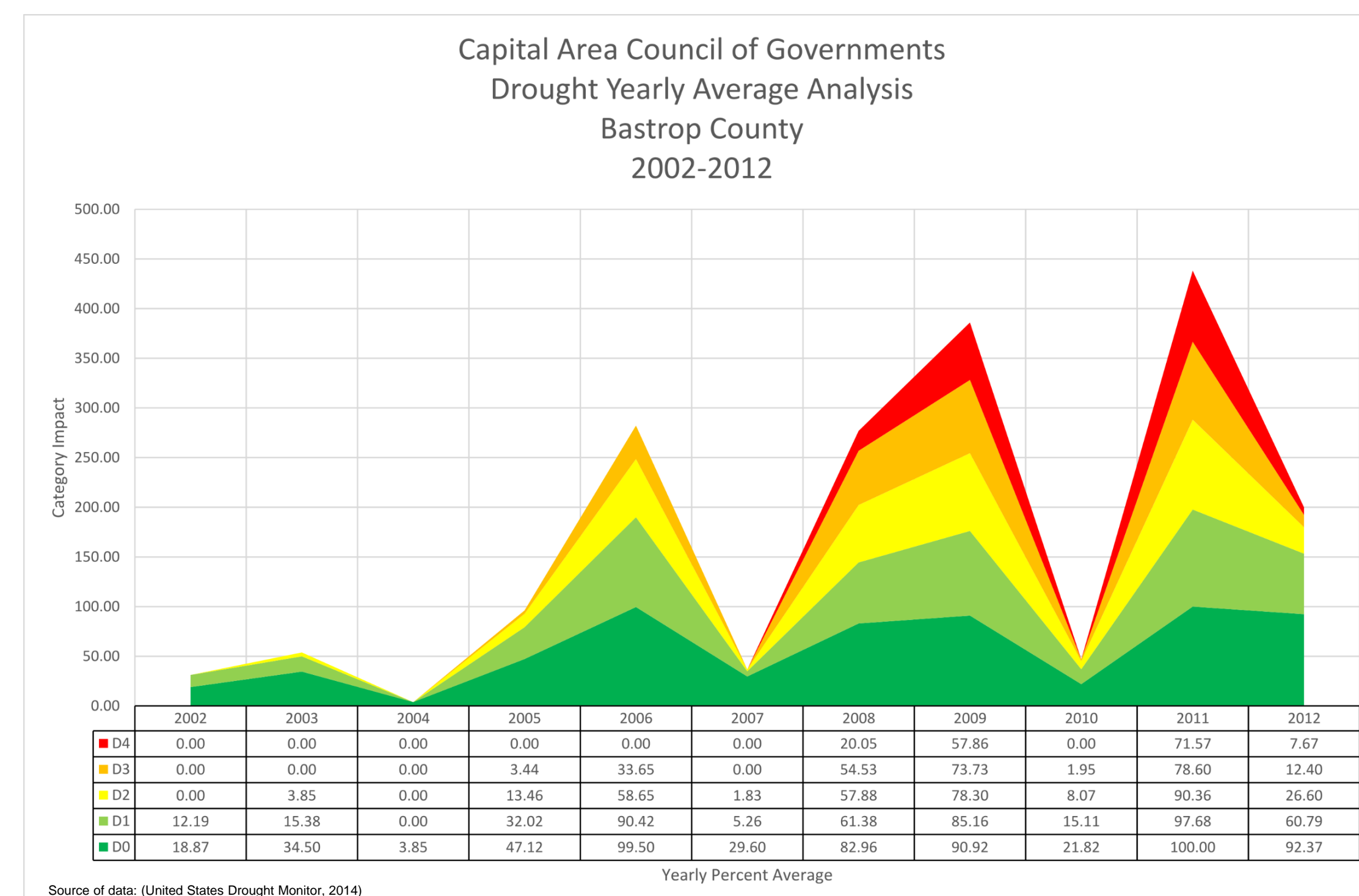


Lake Travis below capacity level in 2011, Photo By: Chase A. Fountain/ Texas Parks and Wildlife – Photo used with permission.

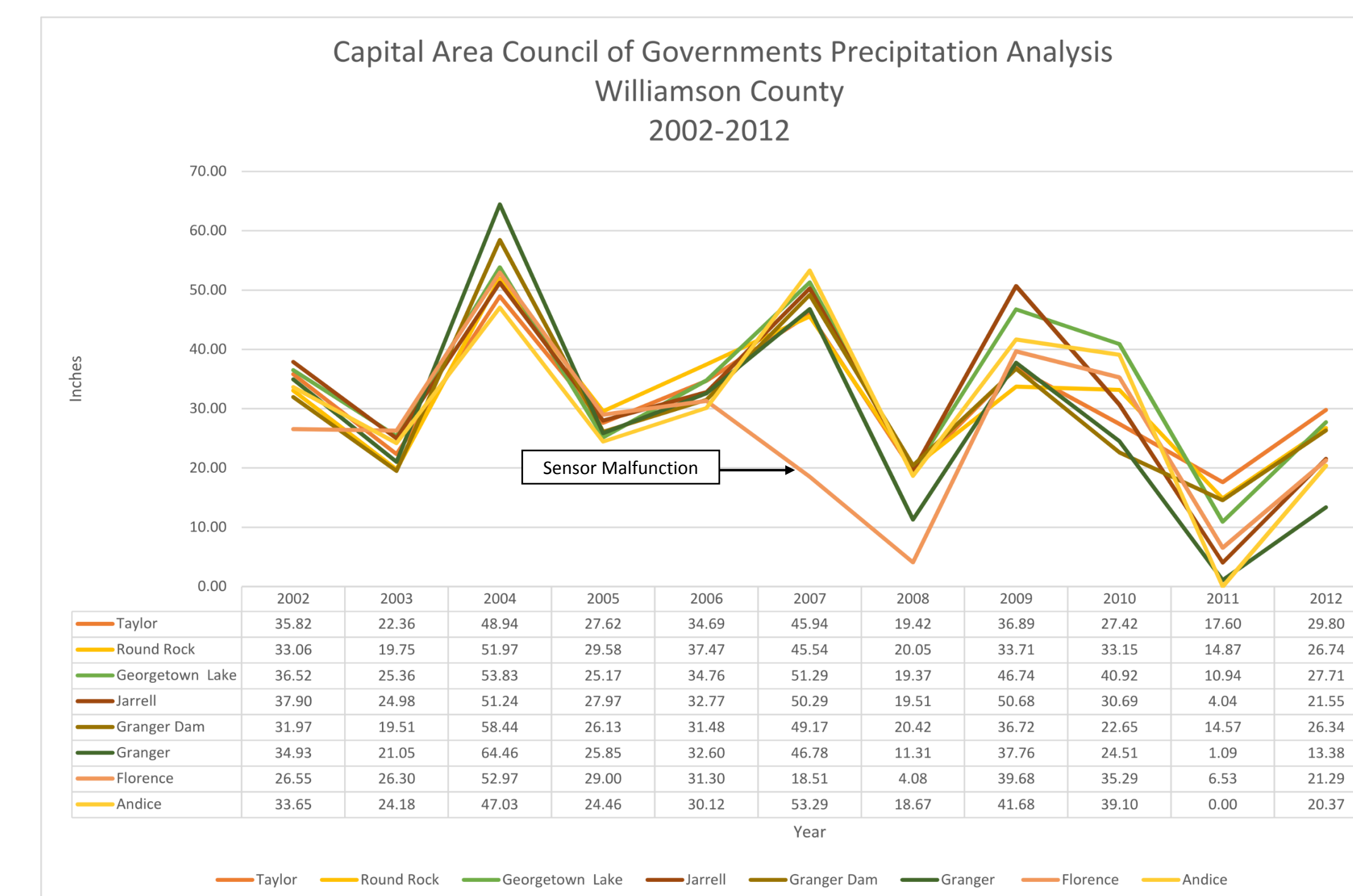
Wildfires by County and Year



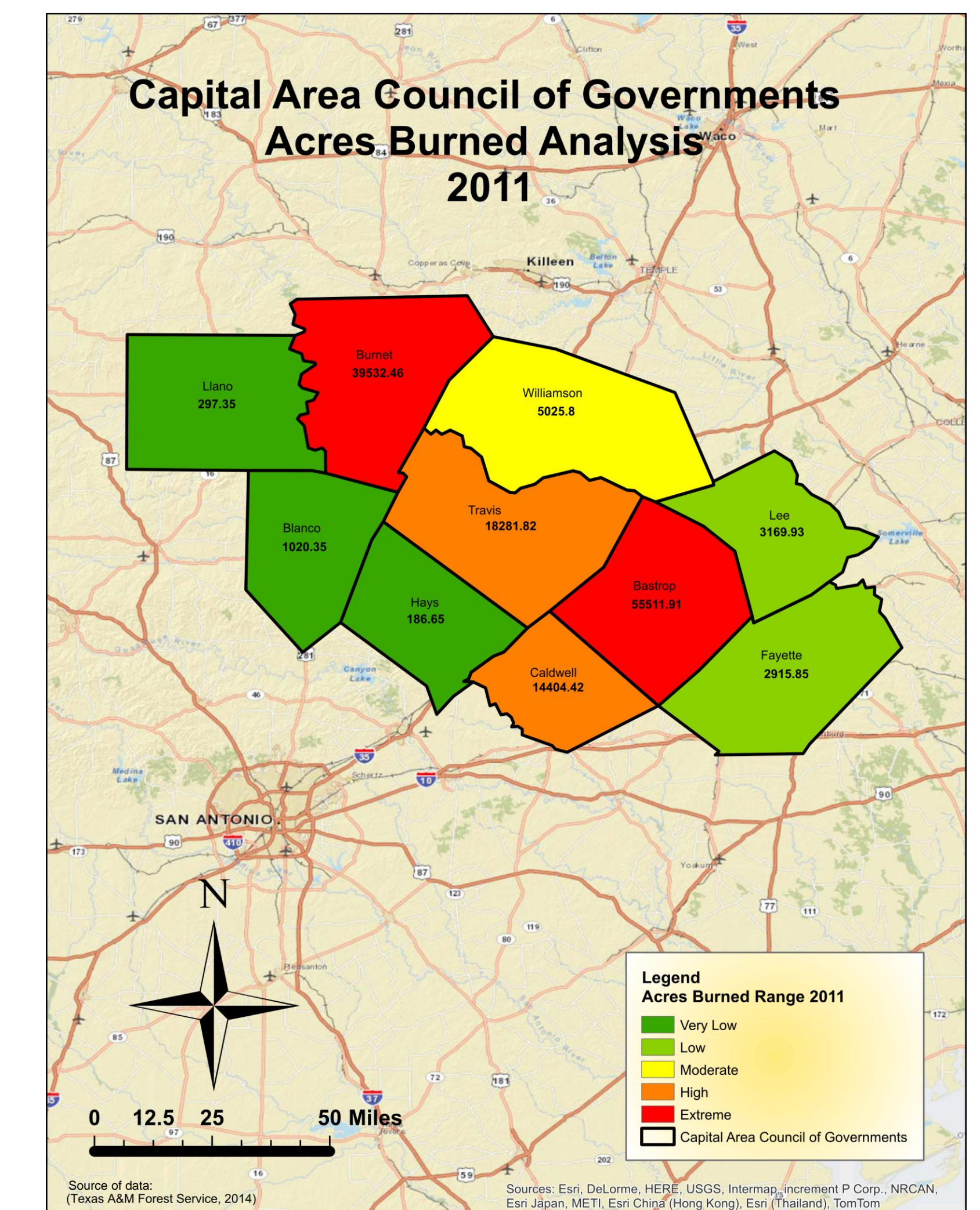
Drought Conditions by County



Precipitation Conditions by County



Acres Burned by County and Year



Quarterly Lake/Reservoir Conditions by Year

Historical Water Supply

