

ORIGINAL ARTICLE

G protein-coupled receptor kinase 2 moderates recruitment of THP-1 cells to the endothelium by limiting histamine-invoked Weibel-Palade body exocytosis

N. L. STEVENSON,* B. MARTIN-MARTIN,* J. FREEMAN,† J. KRISTON-VIZI,†‡ R. KETTELER† and D. F. CUTLER*

*Endothelial Cell Biology Laboratory, MRC Laboratory for Molecular Cell Biology, UCL; †Translational Research Resource Centre, MRC Laboratory for Molecular Cell Biology, UCL; and ‡Bioinformatics Image Core, MRC Laboratory for Molecular Cell Biology, UCL, London, UK

To cite this article: Stevenson NL, Martin-Martin B, Freeman J, Kriston-Vizi J, Ketteler R, Cutler DF. GRK2 moderates recruitment of THP-1 cells to the endothelium by limiting histamine-invoked Weibel-Palade body exocytosis. *J Thromb Haemost* 2014; **12**: 261–72.

Summary. *Background:* G protein-coupled receptors (GPCRs) are a major family of signaling molecules, central to the regulation of inflammatory responses. Their activation upon agonist binding is attenuated by GPCR kinases (GRKs), which desensitize the receptors through phosphorylation. G protein-coupled receptor kinase 2 (GRK2) down-regulation in leukocytes has been closely linked to the progression of chronic inflammatory disorders such as rheumatoid arthritis and multiple sclerosis. Because leukocytes must interact with the endothelium to infiltrate inflamed tissues, we hypothesized that GRK2 down-regulation in endothelial cells would also be pro-inflammatory. *Objectives:* To determine whether GRK2 down-regulation in endothelial cells is pro-inflammatory. *Methods:* siRNA-mediated ablation of GRK2 in human umbilical vein endothelial cells (HUVECs) was used in analyses of the role of this kinase. Microscopic and biochemical analyses of Weibel-Palade body (WPB) formation and functioning, live cell imaging of calcium concentrations and video analyses of adhesion of monocyte-like THP-1 cells provide clear evidence of GRK2 function in histamine activation of endothelial cells. *Results:* G protein-coupled receptor kinase 2 depletion in HUVECs increases WPB exocytosis and P-selectin-dependent adhesion of THP-1 cells to the endothelial surface upon histamine stimulation, relative to controls. Further, live imaging of intracellular calcium concentrations reveals amplified histamine receptor signaling in GRK2-depleted cells, suggesting GRK2 moderates WPB exocytosis through receptor desensitization. *Conclusions:*

G protein-coupled receptor kinase 2 deficiency in endothelial cells results in increased pro-inflammatory signaling and enhanced leukocyte recruitment to activated endothelial cells. The ability of GRK2 to modulate initiation of inflammatory responses in endothelial cells as well as leukocytes now places GRK2 at the apex of control of this finely balanced process.

Keywords: G protein coupled receptor kinase 2; human umbilical vein endothelial cells; P-selectin; von Willebrand factor; Weibel-Palade bodies.

Introduction

To initiate an inflammatory response, both leukocytes and endothelial cells need to be activated by hormones and pro-inflammatory cytokines. The subsequent cell-surface expression of adhesion molecules in both cell types results in the rolling of leukocytes along the endothelial surface, before eventual firm adhesion and extravasation [1].

Many signaling pathways involved in both endothelial and leukocyte activation are initiated by stimulating G protein-coupled receptors (GPCRs) [2]. GPCR signal transduction is attenuated by GPCR kinase (GRK)-mediated phosphorylation of agonist-bound receptor. This promotes β -arrestin binding, which uncouples the receptor from its G proteins and mediates receptor internalization and recycling [3,4]. Disruption of this machinery alters the strength and/or duration of physiological responses to GPCR ligands [5]. Of seven GRK subfamilies, the ubiquitously expressed GRK2 has been most closely linked to inflammatory [2,6] and cardiovascular function [6,7].

GRK2 protein levels are higher in leukocytes than other tissues [8] and its cytokine-induced down-regulation [9–11] is associated with chronic inflammatory disorders such as multiple sclerosis (MS) [12] and rheumatoid arthritis (RA) [9,13], as well as inflammatory pain [14].

Correspondence: Daniel F. Cutler, MRC-LMCB, University College London, Gower Street, London, WC1E 6BT, UK.
Tel.: +20 7679 7808; fax: +20 7679 7805.
E-mail: d.cutler@ucl.ac.uk

Received 26 September 2013

Manuscript handled by: P. H. Reitsma

Final decision: P. H. Reitsma, 21 November 2013

The pathologies of both MS and RA are characterized by increased leukocyte infiltration of diseased tissues, probably caused, at least in part, by impaired GRK2-mediated attenuation of chemokine signaling. For example, GRK2^{+/-} murine T cells show significantly heightened migratory responses towards CCL4. This is concurrent with enhanced calcium signaling and PKB phosphorylation, indicative of impaired CCR5 desensitization [15]. Moreover, loss of GRK2 in the endothelium can enhance cytokine expression, increasing the incidence of macrophage extravasation in endothelial-GRK2^{-/-} mice [16].

Endothelial activation is mediated by pro-inflammatory and procoagulant factors, delivered to the endothelial cell surface by exocytosing Weibel-Palade bodies (WPBs). These specialized secretory organelles store the multimeric glycoprotein von Willebrand factor (VWF) [17] and are formed at the *trans*-Golgi network [18–20], with the help of an AP-1/clathrin coat [21]. Upon injury or infection, mature organelles, previously anchored to cortical actin [22], fuse with the plasma membrane and release VWF to initiate hemostasis [23,24]. Other WPB cargo such as the leukocyte receptor P-selectin, its co-factor CD63 [25] and pro-inflammatory cytokines are also delivered to the cell surface or released into the circulation. WPBs are thus central to endothelial regulation of inflammation.

As GRK2-deficiency in leukocytes has been closely linked to inflammatory disorders, we determined whether it also affects the pro-inflammatory behaviour of endothelial cells.

Materials and methods

Cell culture and transfection

Human umbilical vein endothelial cells (HUVECs, TCS Cellworks, Buckingham, UK) and THP-1 cells (a gift from Dr Patric Turowski) were cultured as previously described [26]. Two-round nucleofections (Nucleofector II, programme U-001, Amaxa Biosystems, Gaithersburg, MD, USA) with 200 pmol siRNA and 10⁶ HUVECs (passage 3) were performed 48 h apart for assay 48 h later. GRK2 siRNA sequence 1: 5'-UG-UCCAGUAAACUUGAUUCC-3' (Sigma, St Louis, WA, USA), sequence 2: 5'-GCUCGCAUCCCUUCUCGAAUU-3'. Mock transfections were performed using firefly luciferase siRNA [27]: 5'-CGUACGCGGAAUACUUCG-3'. For ssHRP [28] expression, 7 µg construct was included in the second reaction.

Antibodies

Antibodies used were: rabbit polyclonal anti-human VWF antibody and its HRP-conjugated form (DAKO, Cambridgeshire, UK); sheep polyclonal anti-TGN46 (Abcam, Cambridge, UK); anti-P-selectin (R&D Systems, Minnea-

polis, MN, USA); rabbit polyclonal anti-GRK2; mouse monoclonal anti-β-actin (Santa Cruz Biotechnology, Middlesex, UK); mouse monoclonal anti-MyRIP (a gift from Professor Seabra, Imperial College London); and Alexafluor-conjugated (Invitrogen, Paisley, UK) and HRP-conjugated (Jackson ImmunoResearch, Suffolk, UK) secondary antibodies.

Immunofluorescence and WPB quantification

Transfected HUVECs were fixed and stained as described previously [21]. Images were taken using a Leica TCS SPE scanning confocal microscope, a 63× (NA1.3) or 40× (NA1.15) oil immersion lens (NA 1.15) and LAS-AF Software (Leica, Buckinghamshire, UK). Acquisition settings were: 0.5 µm z-stack step size, 1024 × 1024 pixel resolution, 3–4 frame average and 1× zoom. For quantification, the LAS-AF mark-and-find feature and a motorized stage were used to generate 15–25 random fields of view (FoV, 300–400 cells) per treatment condition in each replicate experiment. WPBs were quantified using Image J; background subtraction was performed on the VWF channel using a rolling ball algorithm (radius 2 pixels) and a manual threshold applied. Segmented objects over 0.1 µm² were counted and measured for Feret's diameter (defined as the longest diameter across a WPB in 2D projection) using Image J.

Secretion assays

VWF secretion assays have been described previously [21]. Briefly, cells were rinsed and incubated in release medium for 30 min, then release medium plus 100 ng mL⁻¹ phorbol 12-myristate 13-acetate (PMA, Sigma-Aldrich, St Louis, MO, USA) or 10 µM histamine for 45 or 30 min, respectively. Medium was collected to sample VWF release and intracellular VWF determined from cell lysates. Secreted VWF is presented as a percentage of the total VWF (media plus lysates). All results are normalized to total lysate protein content, as determined by bicinchoninic assay (Pierce, Rockford, IL, USA). Total VWF measurements were used to compare VWF protein expression in mock and GRK2-depleted cells. To measure unregulated secretion over longer periods, cells were rinsed and incubated in serum-free release medium for 4 h, or in optiMEM reduced serum medium (GIBCO, Paisley, UK) for 7 h.

ssHRP secretion assays

Eight hours post-transfection, cells were rinsed and incubated in phenol red-free HUVEC growth medium (Sigma); 17 h later, medium was collected and cells lysed in 50 mM Tris/Cl pH2 on ice. Samples were processed and analyzed as described previously [29]. Secretion is presented as a proportion of total ssHRP (media plus lysates).

Western blotting

Cell lysates were collected in RIPA buffer (50 mM Tris-HCl pH 7.5, 300 mM NaCl, 1% deoxycholate, 2% Triton-X100, 0.1% SDS). Proteins were separated by SDS-PAGE on 8% acrylamide gels prior to transfer onto a protran nitrocellulose transfer membrane. Separation of pro- and mature VWF was performed on precast Novex® (Life Technologies, Paisley, UK) 6% Tris-Glycine 1.5 mm gels. Blots were probed with primary and HRP-conjugated secondary antibodies (above). Band quantification was performed using a Molecular Imager GS-800 densitometer and Quantity One Software (version 4.6.3, BioRad, Hertfordshire, UK), normalizing against a β -actin loading control.

VWF multimer analysis

Samples were concentrated using Vivaspins500 centrifugal filter units (Sartorius, Goettingen, Germany) and run on SDS-agarose gels as described previously [29]. Multimer patterns were analyzed using the Image J plot profile function to measure intensity changes down each lane, normalized against total signal.

Quantitative PCR

RNA extraction, cDNA preparation and PCR were performed as described previously [22], quantifying normalized expression (using actin) by the $\Delta\Delta$ CT method [30]. Single product amplification was verified by melting curve analysis and gel electrophoresis. Primers used were: GRK2 forward: 5'-GGACAGTGATCAGGAGCTCTA-3'; reverse: 5'-AAGGACTGCATCATGCATGGC3-'; VWF forward: 5'-GCCATCATGCATGAGGTCAGA-3'; reverse: 5'-GGCTCCGTTCTCATCACAGAT-3'; actin forward: 5'-TGGTGGTGAAGCTGTAGCC-3'; reverse: 5'-GCGAGAAGATGACCCAGAT-3'; HRH1 forward: 5'-GGGCCGTCCTCTCTGCCTCTT-3'; reverse: 5'-GCCGAGGCTCGGGTCTTGGT-3'.

Calcium imaging

2 \times Fluo-4 calcium indicator, containing 25 μ M probenecid, was prepared in serum-free release medium as per manufacturer's instructions (Fluo-4 Direct™ Calcium Assay Kit, Molecular Probes, Life Technologies, Paisley, UK). Nucleofected cells seeded onto 1.45-mm glass-bottom imaging dishes (PAA) were rinsed and loaded with 1 \times Fluo-4 for 30 min at 37 °C/5% CO₂ prior to imaging. Movies were acquired using an UltraVIEW VoX spinning disc system (PerkinElmer, Waltham, MA, USA) mounted on an inverted microscope (TiE; Nikon, Surrey, UK) with an EM charge-coupled device camera (512 \times 512 pixels; C9100-13; Hamamatsu Photonics, Hertfordshire, UK) and 488- and 561-nm solid-state lasers. Cells were visualized

using a 100 \times oil immersion lens (NA 1.4), inside a 37 °C heat-controlled chamber. Z-stacks of 0.5- μ m spacing were acquired using a piezo stage (NanoScanZ; Prior Scientific, Cambridgeshire, UK) every 10 s for 10 min. At time-points 60, 300 and 480 s, 10 mM histamine, 200 μ M A21387 ionophore and 50 mM EGTA were added, respectively, to stimulate cells and provide a maximal (fmax) and minimal fluorescent signal. To determine changes in intracellular calcium levels, a 40 \times 40 pixel ROI was drawn juxtaneuclear in the cytosol for each cell and the mean fluo-4 intensity measured at every time-frame using Velocity software (PerkinElmer). Measurements were normalized against fmax to eliminate inconsistencies in indicator loading. To align curves for comparison, Fluo-4 intensity at time-point 60 s was subtracted from all values.

THP-1 flow assays

Nucleofected HUVECs were seeded onto gelatin-coated μ -slides VI^{0.4} (ibidi, Munich, Germany). Slides were mounted on the microscope stage of an Axiovert 100 (Carl Zeiss, Welwyn Garden City, UK), maintained at 37 °C, and connected to a syringe pump system (Harvard Apparatus, Holliston, MA, USA) to draw fluid through the chamber with a wall shear stress of 0.07 Pa (0.7 dyne/cm²). Cells were rinsed with perfusion medium (HBSS containing Ca⁺² and Mg⁺² and 0.2% BSA) under flow, then 10⁶ THP1 cells mL⁻¹ were perfused across the endothelial surface for 3 min to image steady-state rolling. Next, a 10-min stimulation of HUVECs, using perfusion medium + 10 μ M histamine, was followed by a second THP-1 cell perfusion in the absence of secretagogue. The latter was recorded for 5 min to observe monocyte rolling. Movies were taken at 10 \times objective with a FoV of 784 \times 576 pixels (559.78 \times 411.26 μ m) using a QIMAGING Scientific (QIMAGING Scientific, Surrey, Canada) CMOS Rolera bolt camera, acquiring at a rate of 24 frames/second, and Micro-Manager 1.4.13 software. To quantify firmly adhered monocytes on the endothelial surface, random snapshots were taken in the absence of flow at the end of the movie. In antibody blocking experiments, HUVECs were incubated with 15 μ g mL⁻¹ sheep polyclonal anti-human P-selectin (R&D Systems, Minneapolis, MN, USA) or IgG from sheep serum (Sigma-Aldrich) at 37 °C for 30 min prior to experimentation. Antibody was present for the remainder of the experiment.

Results

Loss of GRK2 reduces WPB numbers

To investigate a potential role for GRK2 in modulating endothelial behaviour, we examined whether GRK2-depleted HUVECs produce normal WPBs, a key determinant of endothelial inflammatory function. GRK2 depletion was, on average, 85% (siRNA1, $n = 6$) or 94%

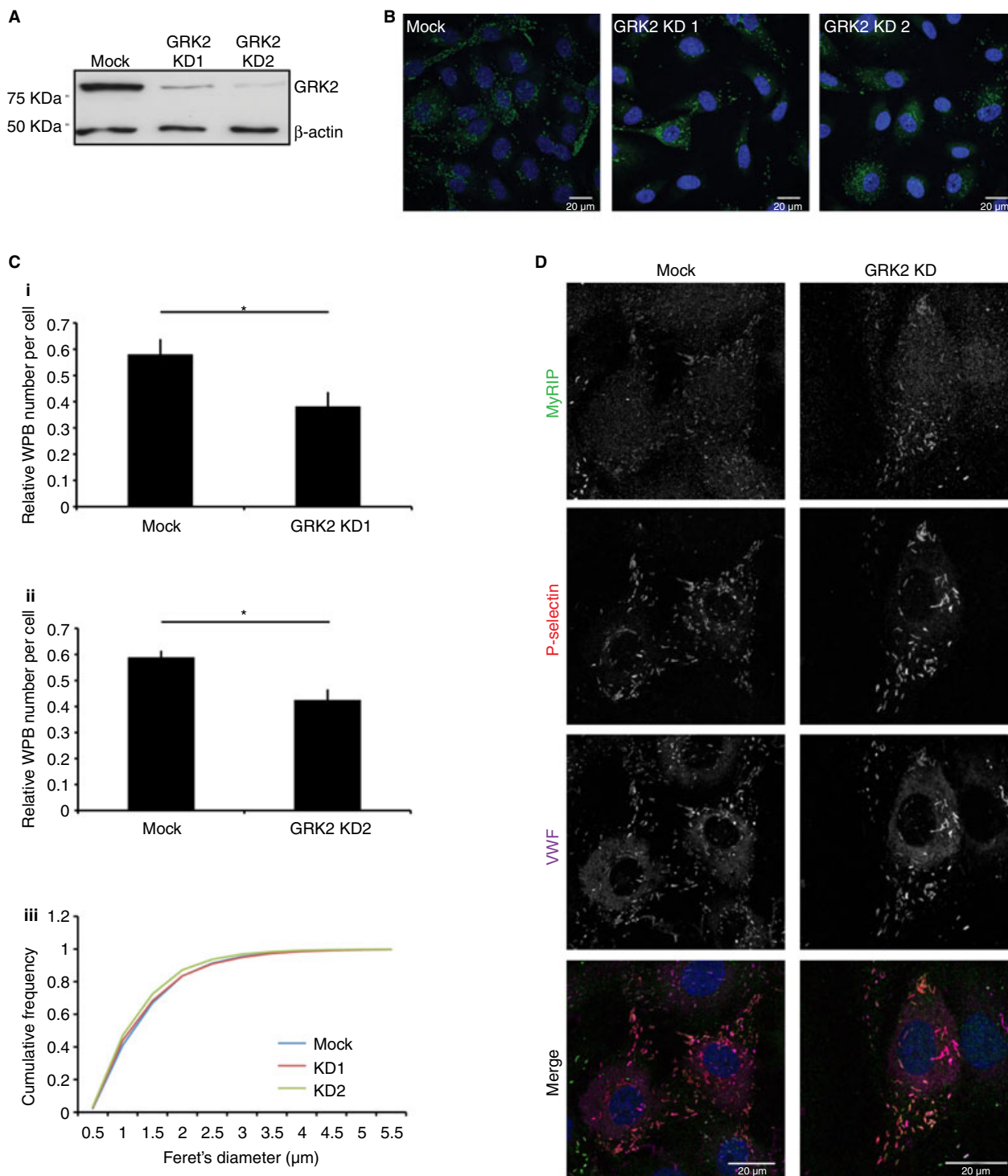


Fig. 1. G protein-coupled receptor kinase 2 (GRK2) KD reduces WPB number without affecting biogenesis. (A–C) HUVECs were transfected with one of two siRNA sequences targeting GRK2, or with luciferase siRNA for mock treatments. (A) Representative western blot. GRK2 depletion was 85% (49–98%, $n = 5$) for siRNA sequence 1 and 94% (79–99%, $n = 7$) for siRNA sequence 2 as determined by SDS-PAGE and quantified by densitometry. GRK2 levels were normalized to β -actin protein expression. (B) Cells were fixed and stained for VWF (green) and DAPI (blue) and imaged at 63 \times objective (20–25 fields of view per condition, 450–650 cells) as confocal stacks ready for quantification. Presented images are maximum intensity projections. Scale bar 20 μ m. (C) Quantification of experiments represented in B. WPB number per cell is reduced by 34% ($n = 4$, $P = 0.024$) and 28% ($n = 4$, $P = 0.021$) following GRK2 KD using siRNA (i) sequence 1 and (ii) sequence 2, respectively. Data are normalized against the maximum mock value for each experiment. Error bars represent SEM. Statistics were performed using a Student's t -test. (iii) Distribution of WPB Feret's diameter, represented as a cumulative frequency chart of the percentage of total organelles found in 0.5 μ m bins. (D) HUVECs transfected with luciferase (mock) or GRK2 (sequence 2) targeting siRNA were fixed and stained for P-selectin (red), VWF (magenta) and MyRIP (green). Scale bar 20 μ m.

(siRNA2, $n = 7$) effective using two different siRNA sequences (Fig. 1A). Transfected cells were thus processed for image analysis. We observed a 34% (siRNA1, 29–49%, $n = 4$) and 28% (siRNA2, 19–36%, $n = 4$) reduction in WPB numbers upon GRK2 depletion, without any consistent change in organelle length (Fig. 1C).

To assess whether other WPB characteristics were altered, recruitment of P-selectin and MyRIP to organelles was also analyzed by immunofluorescence. P-selectin is an integral membrane protein incorporated into WPBs at the *trans*-Golgi network (TGN) [31], whereas the Rab27A-MyRIP-MyoVA complex is recruited later and predominantly found on mature organelles [32]. Incorporation of these proteins into WPBs is therefore indicative of successful progression through two independent stages of biogenesis. Both proteins were found to localize correctly in GRK2-depleted cells, indicating that cargo selection and maturation is unaffected (Fig. 1D). Furthermore, in both cell populations, 52% of cells showed P-se-

lectin recruitment to WPBs, suggesting it is targeted equally efficiently (data not shown).

Disruption of WPB biogenesis can result in the loss of higher molecular weight (HMW) forms of VWF [21]. We therefore determined the multimeric state of intracellular VWF as an additional descriptor of organelle structure. VWF multimerisation was slightly reduced in GRK2-depleted cells, suggesting either VWF maturation is reduced or mature protein is being lost from the cell (see Fig. 2A).

Reduction in WPB numbers is not due to reduced VWF expression

VWF drives the formation of WPBs [33]. Deficiencies in VWF expression can therefore reduce WPB numbers, as seen in von Willebrand disease [34]. To determine if this is causative of fewer organelles here, VWF protein levels in control and GRK2 knock-down (KD) cells were quan-

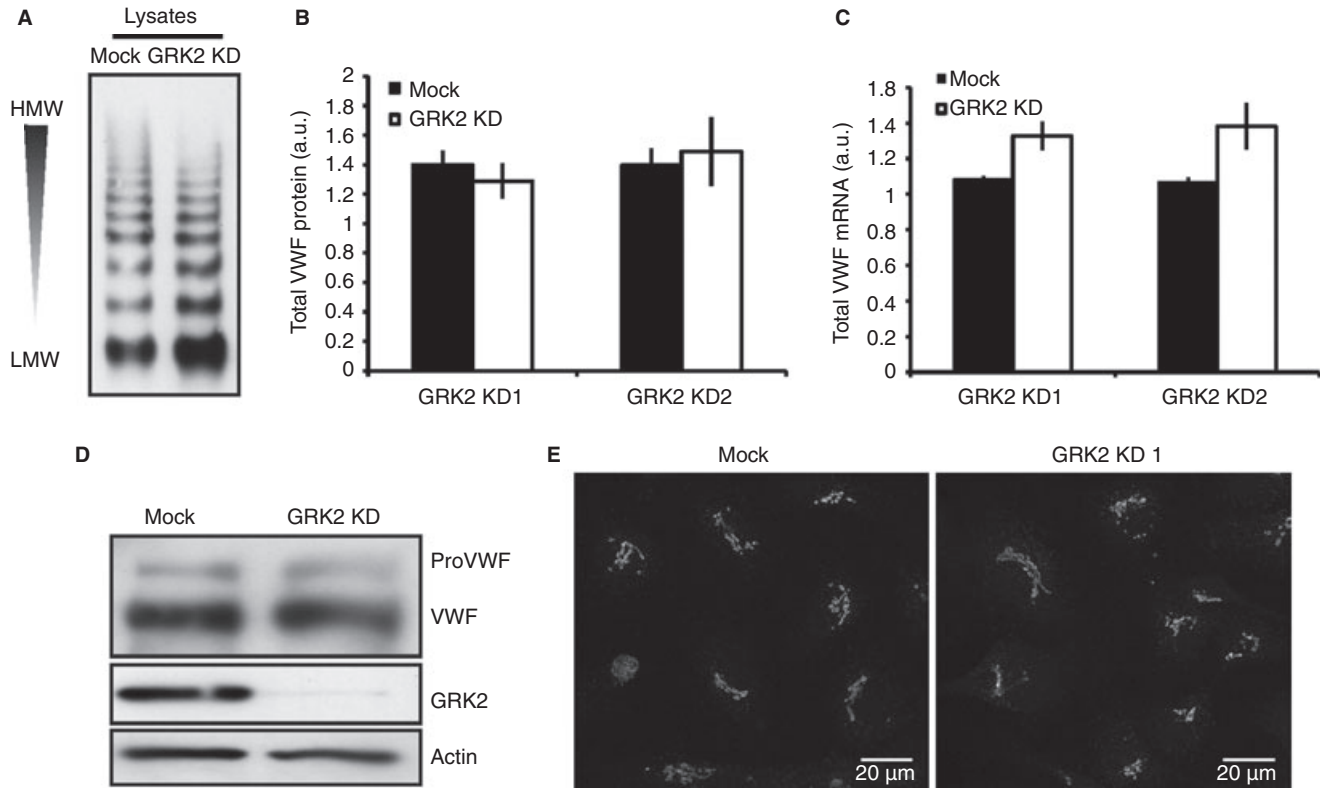


Fig. 2. von Willebrand factor (VWF) synthesis and processing is normal in GRK2 KD cells. (A) Control and GRK2-depleted cell lysates were collected in serum-free medium and analyzed on 1.4% SDS-agarose gels under non-reducing conditions to separate VWF multimers. Representative immunoblot of VWF; multimerisation decreases from top to bottom. (B) VWF content in control and GRK2-depleted cell lysates was assayed by ELISA and normalized to total protein content as determined by BCA assay. To aid comparison between experiments, data were then normalized intra-experimentally to the maximal mock reading. Error bars represent SEM. There is no consistent change in VWF protein levels in GRK2 KD cells ($n = 5$). (C) Relative VWF mRNA expression in transfected cells was quantified by RT-qPCR. A consistent trend towards an increase in VWF expression of 24% (14–35%, $P = 0.08$) with siRNA sequence 1 and 31% (16–57%, $P = 0.13$) with sequence 2 is seen in GRK2 KD cells ($n = 3$). Statistics were performed using a Student's *t*-test. (D) Representative immunoblot. Mock and GRK2 KD cells were lysed in RIPA buffer and run on a 6% Tris-glycine gel to separate proVWF and VWF. Following transfer, the blot was cut and probed for VWF, GRK2 and β -actin. (E) Mock and GRK2 KD (siRNA sequence 2) cells were fixed and stained for TGN46 to label the TGN and imaged as confocal stacks at 40 \times objective. Images presented are representative regions of interest shown as maximum projections. Scale bars 20 μ m.

tified by both ELISA and western blot and found to be comparable (Fig. 2). VWF transcript, however, was consistently, although statistically insignificantly, increased by 24% and 31% (siRNA1 and 2 respectively) in GRK2-depleted cells (Fig. 2C). Loss of GRK2 thus does not reduce WPB numbers by reducing VWF expression.

VWF progression through the early secretory pathway is unaffected by GRK2 depletion

We next investigated whether WPB formation is GRK2 dependent. If WPB biogenesis is slowed, VWF is likely to accumulate in pre-Golgi compartments of the secretory pathway, as observed following expression of VWD-causing VWF variants [35]. As VWF passage through the TGN is marked by the furin-mediated cleavage of its pro-peptide [36], VWF progression through the Golgi can be determined by the ratio of pro-VWF to VWF. As shown in Fig. 2(D), this ratio was unaffected by GRK2 depletion, as was the gross morphology of the TGN (Fig. 2E). GRK2 therefore does not influence WPB numbers by regulating VWF trafficking through the early secretory pathway.

GRK2-deficient HUVECs secrete more VWF in the absence of secretagogue than control cells

If VWF expression and WPB formation are normal in GRK2-depleted cells, reductions in organelle number are likely to be the result of increased WPB exocytosis or constitutive VWF secretion. Steady-state VWF release was therefore examined by ELISA. When incubated in reduced-serum medium in the absence of added secreta-

gogue, GRK2-depleted cells released almost 60% more VWF than controls (Fig. 3Ai). Furthermore, a consistent (but statistically insignificant) 33% increase in unregulated secretion in the total absence of serum, and hence stimulus, was also seen in KD cells (Fig. 3Aii). GRK2-depleted cells thus possess fewer WPBs because they release more VWF under resting conditions. To determine whether constitutive secretion is up-regulated in GRK2-deficient cells, the secretion of ssHRP [28], a marker for this pathway, was monitored and found to be unchanged. GRK2 depletion therefore specifically affects VWF release (Fig. 3B).

A GRK2-depleted endothelium is hyper-responsive to histamine stimulation

The observed change in VWF release, coupled to the known role of GRK2 in desensitization, suggested that WPB loss might result from enhanced sensitivity to GPCR signaling. To determine whether GRK2 depletion affects endothelial activation, we challenged cells with histamine, a GPCR agonist [37] and pro-inflammatory stimulant [38] of WPB exocytosis. GRK2 KD cells released 78% (45–179%, $n = 6$) more VWF than controls during a 30-min incubation with 10 μ M histamine, consistent with increased sensitivity (Fig. 4A). There was no difference in the multimeric state of the VWF released by GRK2-deficient HUVECs, indicating that similar organelles are secreted in both cell populations (Fig. 4Aii).

We also performed a secretion assay in the presence of PMA, a membrane permeant DAG analogue, which stimulates WPB exocytosis by raising both intracellular calcium and cAMP levels, independent of cell surface receptors. Importantly, there was no difference in regu-

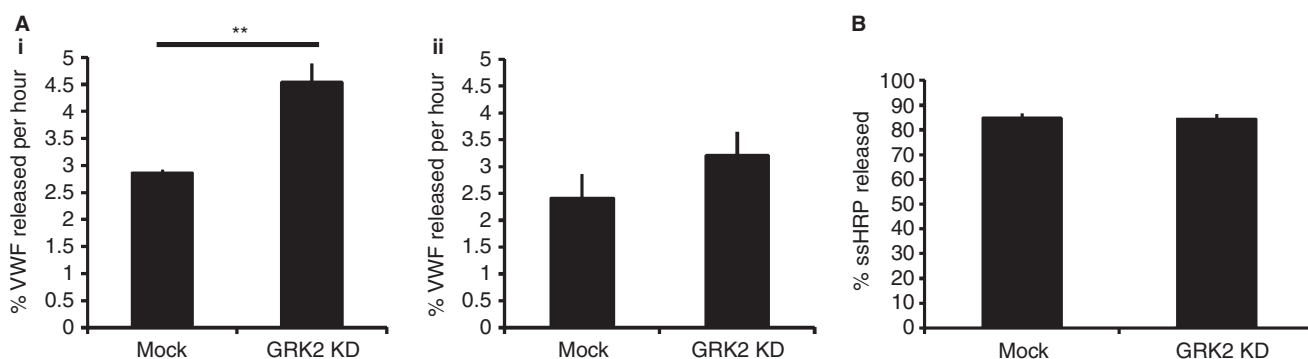


Fig. 3. Unregulated secretion is increased in GRK2 KD cells. (A) Mock and GRK2 KD (siRNA sequence 2) cells were rinsed and incubated with (i) reduced-serum medium (OptiMEM) for 7 h or (ii) serum-free medium for 4 h. Media and cell lysates were then collected and assayed for VWF content by ELISA, before normalizing to lysate total protein content as determined by BCA assay. The percentage of total VWF (medium plus lysates) released over 1 h was calculated and is presented here to allow comparison between the two conditions. Error bars represent SEM. Statistics were performed using Student's *t*-test. (Ai) A 59% increase in VWF release is seen in GRK2 KD cells assayed in OptiMEM ($n = 3$, $P = 0.01$). (Aii) In the absence of serum, a 33% increase in VWF secretion is seen ($n = 4$, $P = 0.3$). (B) HUVECs were transfected with luciferase- or GRK2-targeting siRNA plus ssHRP cDNA. Secreted ssHRP was collected over 17 h in phenol red-free medium before lysing cells in Tris-Cl pH2. The ssHRP content of media and lysates was determined by kinetic ELISA. Secreted ssHRP is expressed as a percentage of total ssHRP present in cells at the beginning of the assay (medium plus lysates) and is 84% under both conditions (82–88%, $n = 3$). Error bars represent SEM.

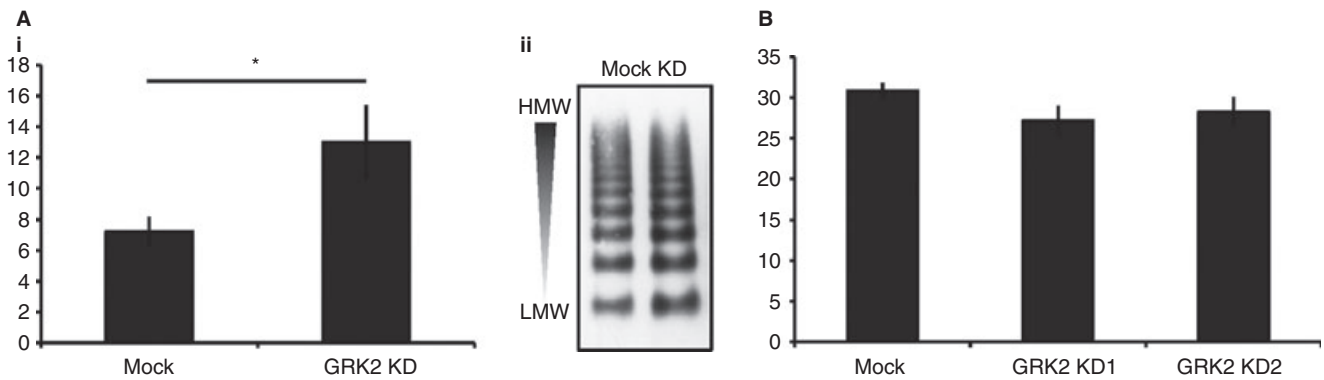


Fig. 4. von Willebrand factor (VWF) secretion is increased in response to histamine but not PMA. (A–B) Mock and GRK2-depleted cells were incubated in serum-free medium plus (A) histamine for 30 min or (B) PMA for 45 min to monitor stimulated VWF secretion. Cells were lysed and the VWF content in all samples measured by ELISA and normalized to total protein content as determined by BCA assay. Secreted VWF is expressed as a percentage of the total intracellular VWF present at the start of the assay (releasates plus lysates). Error bars represent SEM. (Ai) Following histamine stimulation, VWF secretion is increased by 79% ($n = 7$, $P = 0.03$) in GRK2 KD cells. Statistics were performed using a Student's *t*-test. (Aii) Representative VWF multimer analysis. Histamine secretion assay samples were analyzed on 1.4% SDS-agarose gels under non-reducing conditions to separate VWF multimers and probed post-transfer for VWF. Multimerisation decreases top to bottom. (B) VWF secretion in response to PMA is unchanged following GRK2 depletion.

lated secretion between control and KD cells in this instance, suggesting that the organelles of siRNA-treated cells are not generally secretion super-competent (Fig. 4B).

To confirm that the enhanced histamine-stimulated secretion observed in GRK2-depleted cells was due to impaired GPCR desensitization, we next investigated the amplitude of downstream signaling events. Intracellular calcium concentrations before and during histamine stimulation were monitored by live-imaging cells loaded with Fluo-4 indicator. As shown in Fig. 5, Ca^{2+} influx in response to histamine was augmented in GRK2-depleted cells relative to controls. This was not due to general changes in receptor abundance, as HRH1 mRNA, the only histamine receptor expressed in HUVECs [39], was equivalent in GRK2 KD and control cells (Fig. 5B).

Endothelial GRK2 is anti-inflammatory

To establish the functional relevance of these changes, we assayed monocyte-like THP-1 cell adhesion to HUVEC monolayers. Control and GRK2-depleted HUVECs were stimulated with histamine before being perfused with 10^6 THP-1 cells mL^{-1} under flow. The number of firmly adherent cells after 5 min was found to be increased almost 3-fold in GRK2-depleted cells (Fig. 6B). This increase was dependent on P-selectin, because, in the presence of $15 \mu g mL^{-1}$ function-blocking P-selectin antibody, THP-1 adhesion was reduced to control levels in GRK2 KD cells (Fig. 6B). There was no significant difference in adhesion between control and GRK2-depleted cells in the absence of secretagogue (Fig. 6B).

To verify that these observations result from increased WPB exocytosis, and not changes in P-selectin expression, P-selectin protein levels in mock and KD cell lysates were

examined by SDS-PAGE and found to be comparable (Fig. 6C). Furthermore, P-selectin targeting to WPBs was not affected by loss of GRK2 (Fig. 1D). Increased THP-1 cell adhesion to GRK2-depleted HUVECs therefore results from increased delivery of P-selectin to the plasma membrane upon stimulation.

Discussion

Extravasation of circulating leukocytes and their subsequent migration into afflicted tissue during inflammation must be tightly regulated, because excessive recruitment results in inflammatory disease. Leukocyte GRK2 activity is known to limit leukocyte migration along chemotactic gradients and thus prevent aberrant tissue infiltration [9,12,13,15,40]. Here we show for the first time that GRK2 also regulates endothelial activation and leukocyte recruitment *in vitro*. Together these activities have the potential to limit both early and late events in the initiation of inflammation and thus prevent the harmful accumulation of leukocytes inside the body.

A key pro-inflammatory stimulant of endothelial cells is histamine [38], which triggers calcium-mediated WPB exocytosis by binding to HRH1 [39,41], a GPCR phosphorylated by GRK2 [37]. Consistent with a failure in HRH1 desensitization, we report that histamine-invoked calcium influx is amplified in GRK2-deficient HUVECs, as is subsequent VWF release. Similar effects of GRK2 depletion on calcium signaling have been reported upon CCR5 stimulation in activated T cells, suggesting a general mechanism for regulation of inflammatory signal transduction [15]. In addition to GRK2, HUVECs have been reported to express GRK5 and 6 [42]. To the best of our knowledge, there is no reported interaction between these kinases and HRH1 that may complicate

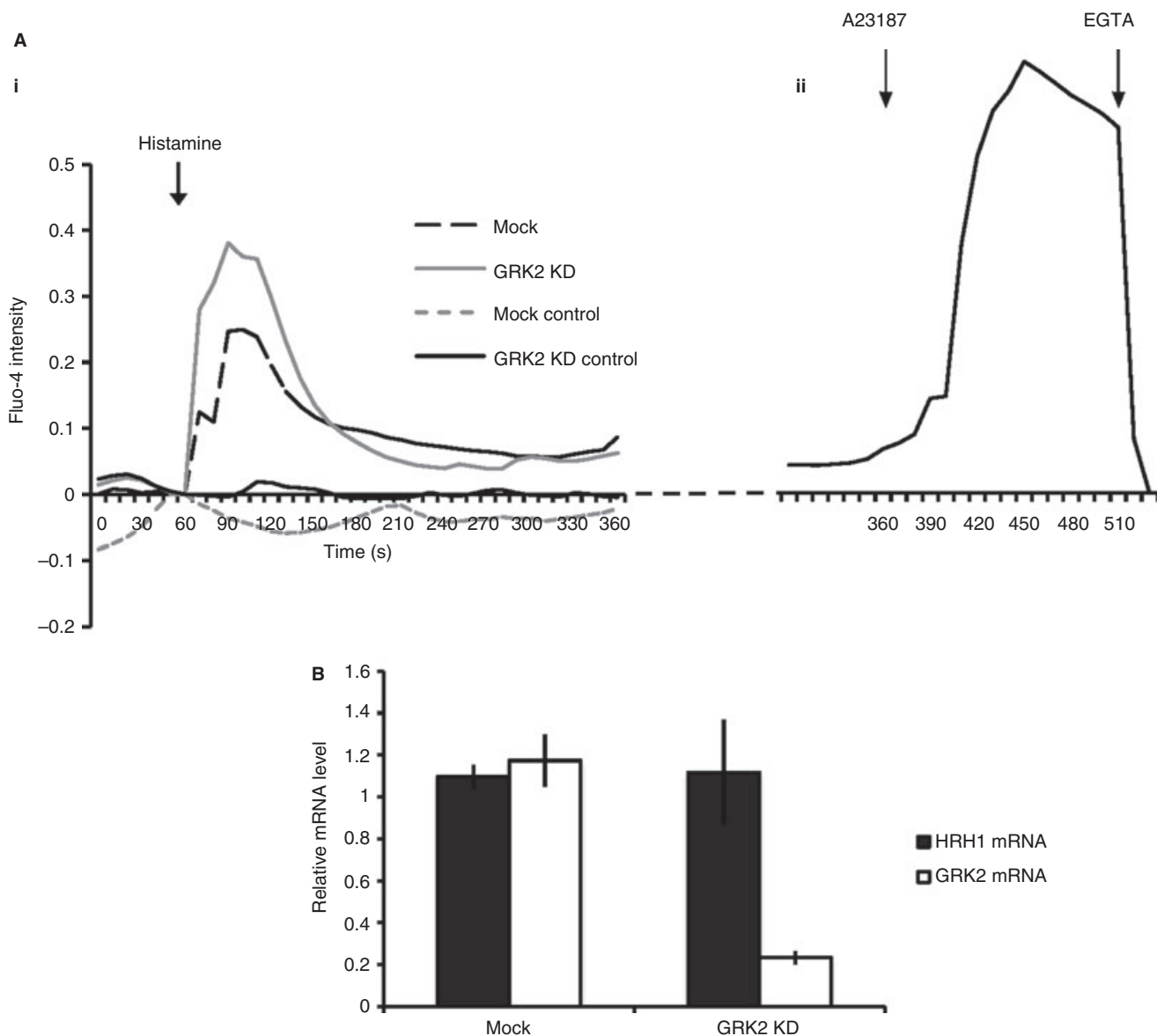


Fig. 5. Signalling downstream of histamine is enhanced and prolonged in GRK2 KD cells. (A–B) Control and GRK2-depleted cells were loaded with Fluo-4 calcium indicator for 30 min then imaged by spinning disc microscopy, taking z stacks of 0.5- μ m spacing every 10 s at 100 \times objective. Cells were treated with histamine, A23187 ionophore and EGTA after 1, 6 and 8 min of imaging, respectively. (A) Mean Fluo-4 intensity at each time-point imaged (three replicate experiments, in total 34 mock and 34 KD cells quantified) normalized against the maximum fluorescence seen in response to A23187 treatment to control for indicator loading. To allow comparison of cell responses, the intensity at time-point 0 is subtracted from all values to align curves. Unstimulated controls did not receive histamine treatment (six mock and 16 GRK2 KD cells). (ii) Mean curve for five mock cells from one replicate experiment to provide an example of Fluo-4 indicator response to A23187 and EGTA (y-axis as for Ai). (C) RNA was extracted from mock and GRK2 depleted cells and levels of HRH1 and GRK2 mRNA quantified by RT-PCR. Error bars represent standard deviation. There is no detectable change in HRH1 expression ($n = 3$).

interpretation of the results presented. GRK5 and 6 do, however, desensitize other receptors that are capable of stimulating WPB exocytosis, such as PAR-1 [42], and thus may contribute to the regulation of other hemostatic and inflammatory pathways in a similar manner to GRK2.

Histamine signaling through HRH1 has previously been shown to induce P-selectin-mediated leukocyte rolling in post-capillary venules [39,43]. Consistent with this,

we see a 3-fold increase in the number of THP-1 cells adhering to GRK2-depleted HUVECs following enhanced receptor activation. These leukocyte-endothelial interactions rely on the regulated translocation of adhesion molecules and receptors to the cell surface. In the case of endothelial P-selectin, this is achieved through WPB exocytosis. The importance of P-selectin in mediating tethering between endothelial cells and leukocytes is well established [44]. In P-selectin-deficient mice, both initial

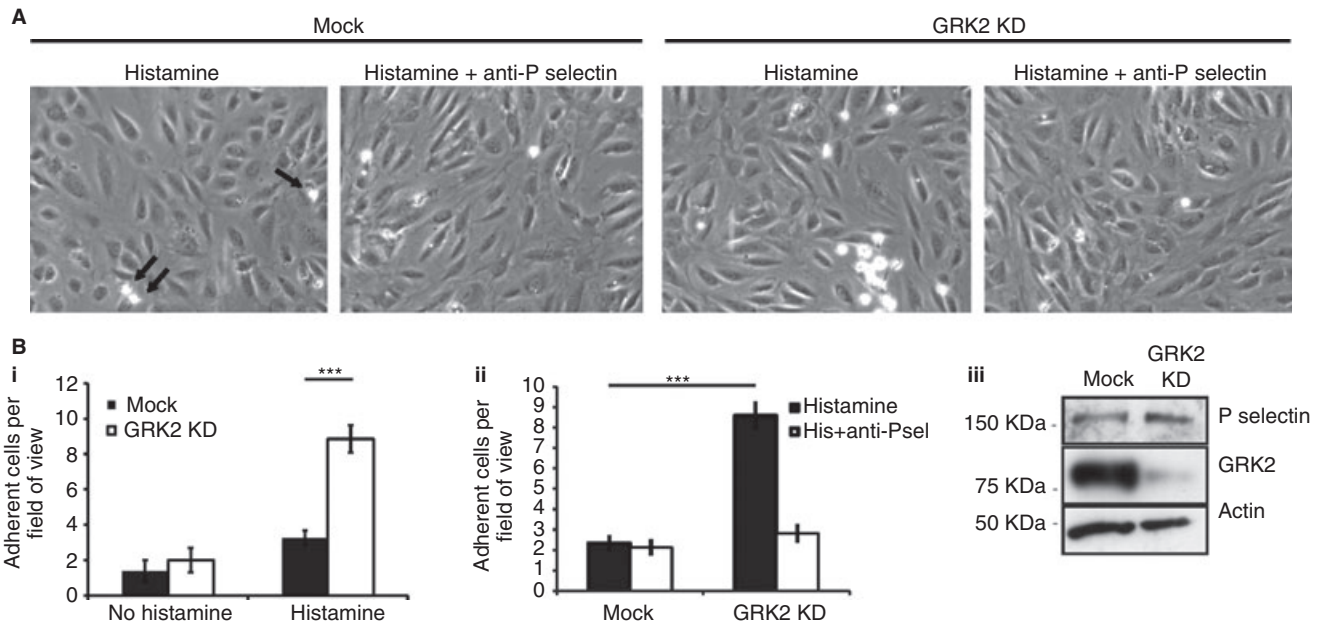


Fig. 6. G protein-coupled receptor kinase 2 (GRK2) depletion enhances THP-1 adherence to HUVEC monolayers. (A–B) Mock or GRK2-depleted HUVEC monolayers were stimulated with histamine and perfused with THP-1 cells under flow for 5 min in the presence or absence of P-selectin antibody. (A) Representative bright field images of HUVEC monolayers taken at the end of each assay. THP-1 cells can be distinguished as bright white circles; examples are highlighted by arrows. (B) Quantification of the number of THP-1 cells adhered to control and GRK2-depleted HUVECs after 5 min perfusion before or following histamine stimulation. Values shown are the mean number of firmly adherent THP-1 cells per field of view. Error bars represent SEM. Statistical significance was determined by Student's *t*-test. (Bi) The number of adherent THP-1 cells following stimulation is 170% higher on GRK2-depleted endothelial cells ($n = 3$, $P = 1.94 \times 10^{-8}$). (Bii) The increase in THP-1 cells firmly adherent to GRK2-depleted HUVECs was blocked by the presence of anti-P-selectin ($15 \mu\text{g mL}^{-1}$) by 67% (data from one experiment; mock, 2.33 ± 0.4 ; mock in the presence of anti-P-selectin, 2.12 ± 0.41 ; GRK2 KD, 8.58 ± 0.7 ; GRK2 KD in the presence of anti-P-selectin, 2.81 ± 0.47). THP-1 adherence to histamine-treated mock and GRK2 KD cells is significantly different, $P = 1.4 \times 10^{-8}$. (C) HUVECs transfected with luciferase or GRK2 siRNA were lysed and assayed for P selectin and GRK2 content by SDS-PAGE. As a control, blots were also probed for actin.

rolling, as seen by intra-vital microscopy, and subsequent neutrophil recruitment to inflamed sites are severely impaired [45]. Similarly, antibodies against P-selectin glycoprotein ligand-1 (PSGL-1), the leukocyte counter-receptor for P-selectin, block rolling of human polymorphonuclear cells in rat mesenteric venules [46]. Here we indicate that the converse is also true; enhanced delivery of P-selectin to the endothelial surface can promote excessive accumulation of adherent leukocytes.

Consistent with our data, increased cell-surface P-selectin has been shown to correlate with the development of inflammatory infiltrates in a number of pathologies. In murine atherosclerotic lesions, histochemical staining of endothelial P-selectin is strongest at sites of active macrophage infiltration [47]. Moreover, VEGF-induced P-selectin up-regulation leads to psoriasis and contact dermatitis [48], whereas enhanced surface translocation of P-selectin in pancreatic capillaries, through WPB exocytosis, vastly contributes to the progression of severe acute necrotizing pancreatitis [49]. Endothelial P-selectin expression is also increased in the inflamed synovial tissue of patients with rheumatoid arthritis [50], where it promotes monocyte-microvasculature interactions [51]. Paradoxically, loss of P-selectin is reported to enhance progression of murine

collagen-induced arthritis [52]; the contribution of adhesion molecules to inflammatory responses is therefore complex. It is unknown whether endothelial GRK2 is down-regulated in any of these pathologies; however, it is tempting to speculate that augmentation of endothelial activation would serve to exacerbate the already enhanced chemotactic responses of GRK2-deficient leukocytes.

Recently, endothelial-targeted deletion of GRK2 in mice revealed that, even in the absence of pro-inflammatory mediators, loss of GRK2 in the endothelium triggers macrophage infiltration [16]. This is attributed to up-regulation of cytokine expression in response to reactive oxygen species (ROS), generated by GRK2-depleted mitochondria. Here we provide a more direct mechanism by which loss of GRK2 could promote leukocyte adherence to the endothelial wall, and thus extravasation, through impaired inflammatory receptor desensitization and enhanced WPB exocytosis. This could occur downstream of the systemic cytokine signaling induced by loss of GRK2 itself, or upon development of inflammatory disease. How these mice respond to infection or induction of chronic inflammatory conditions remains to be tested.

The storage of both P-selectin and VWF in the same secretory compartment ensures coordinated delivery of both proteins to the cell surface, implying they function in the same processes. Although THP-1 accumulation in GRK2-depleted cells was P-selectin dependent here, the increased secretion of VWF from these cells may also affect inflammation. VWF is itself capable of interacting with PSGL-1 via its A1 domain, an interaction enhanced by the presence of β 2-integrins [53]. The involvement of the latter, plus observations of reduced rolling in P-selectin-deficient mice [45], suggests these interactions are more important in the latter stages of leukocyte recruitment and adhesion. The combined action of increased P-selectin and VWF secretion is therefore consistent with the strong impact of GRK2 depletion on firm adhesion, described here, as opposed to just rolling. We speculate that *in vivo*, the inflammatory effects of increased VWF secretion could be yet further enhanced through the recruitment of large numbers of activated platelets, which themselves induce P-selectin-dependent leukocyte rolling and WPB exocytosis [54]. Platelets also up-regulate expression of additional adhesion molecules, such as E-selectin and VCAM-1 [55], and further enhance leukocyte activation [56].

Delivery of a bolus of adhesion molecules to the endothelial membrane requires the formation of functionally competent secretory organelles. We find that GRK2 depletion does not significantly affect WPB morphology or cargo recruitment, including incorporation of P-selectin. Interestingly, loss of GRK2 does, however, result in a 30% reduction in WPB numbers. This may be explained by the observed increase in unregulated VWF secretion, which is most likely attributable to basal exocytosis of WPBs as described by Giblin *et al.* [57]. Interestingly, this increase in VWF release is not accompanied by a change in steady-state levels of VWF protein, although as WPBs contain approximately 50% of all intracellular VWF [58], a 30% fall in organelle number is only expected to result in a relatively small reduction in total protein. As the relationship between levels of VWF and numbers of WPBs is complex, with both initial formation and subsequent pre-exocytic stages of WPB biogenesis offering opportunities to adjust this ratio [24], it is currently difficult to determine why a fall in protein is not observed.

The simplest explanation for the effects of GRK2 depletion on unregulated VWF secretion is a general failure in GPCR desensitization. The observed difference in VWF release between GRK2-depleted cells assayed in serum-free and reduced-serum media does suggest that unidentified extracellular agonists may play such a role. Unregulated secretion is, however, still enhanced by 30% in the absence of serum. This could result from autocrine or paracrine signaling; HUVEC confluency is known to affect WPB numbers [59]. Alternatively, the recent observation that GRK2 depletion increases mitochondrial production of ROS [16], known stimulants of WPB

exocytosis [60], may promote low-level endothelial-autonomous stimulation of WPB exocytosis.

Reduced organelle number had no inhibitory effect on histamine-evoked VWF secretion. On the basis that, at most, only 25% of total intracellular VWF was released from GRK2-deficient cells upon histamine stimulation, we suggest that organelle numbers are not limiting under these conditions. Whether WPB number is relevant under conditions such as chronic stimulation, remains to be determined. Moreover, *in vivo*, endothelial cells are unlikely to be confronted by a single stimulus following injury or infection. Angiotensin, vasopressin and adrenaline all bind to receptors that are under GRK2 regulation [61–63] and capable of stimulating WPB exocytosis [64–66]. Indeed, VWF release is also enhanced in response to adrenaline in GRK-depleted HUVECs (data not shown). It may be that the combined activities of these secretagogues, enhanced by the absence of receptor desensitization, would exhaust WPBs in GRK-depleted cells quicker than in control cells.

In conclusion, our data are consistent with a model in which GRK2 limits endothelial activation at steady-state and during an inflammatory response by desensitizing GPCRs, including the histamine receptor, to the presence of agonist. Together with previously published data, this suggests that GRK2 activity could be required in both endothelial cells and leukocytes to limit excess cellular infiltration of inflamed tissues. The ability to modulate an inflammatory response in at least two of the cell types involved potentially allows for GRK2 to mount a coordinated control of this finely balanced process.

Addendum

N. L. Stevenson performed research, carried out data interpretation and wrote the paper. B. Martin-Martin performed research. J. Freeman performed research. J. Kriston-Vizi performed research and contributed to design of the project. R. Ketteler contributed to design of the project. D. F. Cutler contributed to design of the project and interpretation of data, and wrote the paper.

Acknowledgements

We thank J. Pitcher, T. Nightingale, I. White, S. Roberts, S. Weston and M. da Silva for their constructive criticism of this work. This work was supported by a UK MRC programme grant to DFC, by MRC funding of the TRRC, and by funding from the European Union Seventh Framework Programme Marie-Curie Reintegration grant PIRG08 GA-2010-276811 to JKV.

Disclosure of Conflict of Interests

The authors state that they have no conflict of interests.

References

- 1 Ley K, Laudanna C, Cybulsky MI, Nourshargh S. Getting to the site of inflammation: the leukocyte adhesion cascade updated. *Nat Rev Immunol* 2007; **7**: 678–89.
- 2 Vroon A, Heijnen CJ, Kavelaars A. GRKs and arrestins: regulators of migration and inflammation. *J Leukoc Biol* 2006; **6**: 1214–21.
- 3 Shenoy SK, Lefkowitz RJ. β -Arrestin-mediated receptor trafficking and signal transduction. *Trends Pharmacol Sci* 2011; **32**: 521–33.
- 4 Moore CA, Milano SK, Benovic JL. Regulation of receptor trafficking by GRKs and arrestins. *Annu Rev Physiol* 2007; **69**: 451–82.
- 5 Pitcher JA, Freedman NJ, Lefkowitz RJ. G protein-coupled receptor kinases. *Annu Rev Biochem* 1998; **67**: 653–92.
- 6 Penela P, Murga C, Ribas C, Salcedo A, Jurado-Pueyo M, Rivas V, Aymerich I, Mayor F. G protein-coupled receptor kinase 2 (GRK2) in migration and inflammation. *Arch Physiol Biochem* 2008; **114**: 195–200.
- 7 Penela P, Murga C, Ribas C, Tutor AS, Peregrín S, Mayor F. Mechanisms of regulation of G protein-coupled receptor kinases (GRKs) and cardiovascular disease. *Cardiovasc Res* 2006; **69**: 46–56.
- 8 Chuang TT, Sallese M, Ambrosini G, Parruti G, De Blasi A. High expression of beta-adrenergic receptor kinase in human peripheral blood leukocytes. Isoproterenol and platelet activating factor can induce kinase translocation. *J Biol Chem* 1992; **267**: 6886–92.
- 9 Lombardi MS, Kavelaars A, Schedlowski M, Bijlsma JW, Okihara KL, van de Pol M, Ochsmann S, Pawlak C, Schmidt RE, Heijnen CJ. Decreased expression and activity of G-protein-coupled receptor kinases in peripheral blood mononuclear cells of patients with rheumatoid arthritis. *FASEB J* 1999; **13**: 715–25.
- 10 Ramos-Ruiz R, Penela P, Penn RB, Mayor F Jr. Analysis of the human G protein-coupled receptor kinase 2 (GRK2) gene promoter: regulation by signal transduction systems in aortic smooth muscle cells. *Circulation* 2000; **101**: 2083–9.
- 11 Lombardi MS, Kavelaars A, Penela P, Scholtens EJ, Roccio M, Schmidt RE, Schedlowski M, Mayor F Jr, Heijnen CJ. Oxidative stress decreases G protein-coupled receptor kinase 2 in lymphocytes via a calpain-dependent mechanism. *Mol Pharmacol* 2002; **62**: 379–88.
- 12 Vroon A, Kavelaars A, Limmroth V, Lombardi MS, Goebel MU, van Dam AM, Caron MG, Schedlowski M, Heijnen CJ. G protein-coupled receptor kinase 2 in multiple sclerosis and experimental autoimmune encephalomyelitis. *J Immunol* 2005; **147**: 4400–6.
- 13 Lombardi MS, Kavelaars A, Cobelens PM, Schmidt RE, Schedlowski M, Heijnen CJ. Adjuvant arthritis induces down-regulation of G protein-coupled receptor kinases in the immune system. *J Immunol* 2001; **166**: 1635–40.
- 14 Eijkelkamp N, Heijnen CJ, Willemsen HL, Deumens R, Joosten EA, Kleibeuker W, den Hartog IJ, van Velthoven CT, Nijboer C, Nassar MA, Dorn GW, Wood JN, Kavelaars A. GRK2: a novel cell-specific regulator of severity and duration of inflammatory pain. *J Neurosci* 2010; **30**: 2138–49.
- 15 Vroon A, Heijnen CJ, Lombardi MS, Cobelens PM, Mayor F, Caron MG, Kavelaars A. Reduced GRK2 level in T cells potentiates chemotaxis and signaling in response to CCL4. *J Leukoc Biol* 2004; **75**: 901–9.
- 16 Ciccarelli M, Sorriento D, Franco A, Fusco A, Del Giudice C, Annunziata R, Cipolletta E, Monti MG, Dorn GW 2nd, Trimarco B, Iaccarino G. Endothelial g protein-coupled receptor kinase 2 regulates vascular homeostasis through the control of free radical oxygen species. *Arterioscler Thromb Vasc Biol* 2013; **33**: 2415–24.
- 17 Wagner DD, Olmsted JB, Marder VJ. Immunolocalization of von Willebrand protein in Weibel-Palade bodies of human endothelial cells. *J Cell Biol* 1982; **95**: 355–60.
- 18 Metcalf DJ, Nightingale TD, Zenner HL, Lui-Roberts WW, Cutler DF. Formation and function of Weibel-Palade bodies. *J Cell Sci* 2008; **121**: 19–27.
- 19 Michaux G, Cutler DF. How to roll an endothelial cigar: the biogenesis of Weibel-Palade bodies. *Traffic* 2004; **5**: 69–78.
- 20 Hannah MJ, Williams R, Kaur J, Hewlett LJ, Cutler DF. Biogenesis of Weibel-Palade bodies. *Semin Cell Dev Biol* 2002; **13**: 313–24.
- 21 Lui-Roberts WW, Collinson LM, Hewlett LJ, Michaux G, Cutler DF. An AP-1/clathrin coat plays a novel and essential role in forming the Weibel-Palade bodies of endothelial cells. *J Cell Biol* 2005; **170**: 627–36.
- 22 Nightingale TD, Pattni K, Hume AN, Seabra MC, Cutler DF. Rab27a and MyRIP regulate the amount and multimeric state of VWF released from endothelial cells. *Blood* 2009; **113**: 5010–8.
- 23 De Ceunynck K, De Meyer SF, Vanhoorelbeke K. Unwinding the von Willebrand factor strings puzzle. *Blood* 2012; **121**: 270–7.
- 24 Nightingale T, Cutler D. The secretion of von Willebrand factor from endothelial cells; an increasingly complicated story. *J Thromb Haemost* 2013; **11**: 192–201.
- 25 Doyle EL, Ridger V, Ferraro F, Turmaine M, Saftig P, Cutler DF. CD63 is an essential co-factor to leukocyte recruitment by endothelial P-selectin. *Blood* 2011; **118**: 4265–73.
- 26 Moore KL, Patel KD, Bruehl RE, Li F, Johnson DA, Lichtenstein HS, Cummings RD, Bainton DF, McEver RP. P-selectin glycoprotein ligand-1 mediates rolling of human neutrophils on P-selectin. *J Cell Biol* 1995; **128**: 661–71.
- 27 Lang C, Sauter M, Szalay G, Racchi G, Grassi G, Rainaldi G, Mercatanti A, Lang F, Kandolf R, Klingel K. Connective tissue growth factor: a crucial cytokine-mediating cardiac fibrosis in ongoing enterovirus myocarditis. *J Mol Med (Berl)* 2008; **86**: 49–60.
- 28 Connolly CN, Futter CE, Gibson A, Hopkins CR, Cutler DF. Transport into and out of the Golgi complex studied by transfecting cells with cDNAs encoding horseradish peroxidase. *J Cell Biol* 1994; **127**: 641–52.
- 29 Lui-Roberts WW, Ferraro F, Nightingale TD, Cutler DF. Aftiphilin and gamma-synergins are required for secretagogue sensitivity of Weibel-Palade bodies in endothelial cells. *Mol Biol Cell* 2008; **19**: 5072–81.
- 30 Schmittgen TD, Livak KJ. Analyzing real-time PCR data by the comparative C(T) method. *Nat Protoc* 2008; **3**: 1101–8.
- 31 Harrison-Lavoie KJ, Michaux G, Hewlett L, Kaur J, Hannah MJ, Lui-Roberts WW, Norman KE, Cutler DF. P-selectin and CD63 use different mechanisms for delivery to Weibel-Palade bodies. *Traffic* 2006; **7**: 647–62.
- 32 Hannah MJ, Hume AN, Arribas M, Williams R, Hewlett LJ, Seabra MC, Cutler DF. Weibel-Palade bodies recruit Rab27 by a content-driven, maturation-dependent mechanism that is independent of cell type. *J Cell Sci* 2003; **116**: 3939–48.
- 33 Wagner DD, Saffaripour S, Bonfanti R, Sadler JE, Cramer EM, Chapman B, Mayadas TN. Induction of specific storage organelles by von Willebrand factor propolypeptide. *Cell* 1991; **64**: 403–13.
- 34 Wang JW, Eikenboom J. von Willebrand disease and Weibel-Palade bodies. *Hamostaseologie* 2010; **30**: 150–5.
- 35 Wang JW, Bouwens EA, Pintao MC, Voorberg J, Safdar H, Valentijn KM, de Boer HC, Mertens K, Reitsma PH, Eikenboom J. Analysis of the storage and secretion of von Willebrand factor in blood outgrowth endothelial cells derived from patients with von Willebrand disease. *Blood* 2013; **121**: 2762–72.

- 36 Wise RJ, Barr PJ, Wong PA, Kiefer MC, Brake AJ, Kaufman RJ. Expression of a human proprotein processing enzyme: correct cleavage of the von Willebrand factor precursor at a paired basic amino acid site. *Proc Natl Acad Sci USA* 1990; **87**: 9378–82.
- 37 Iwata K, Luo J, Penn RB, Benovic JL. Bimodal regulation of the human H1 histamine receptor by G protein-coupled receptor kinase 2. *J Biol Chem* 2005; **280**: 2197–204.
- 38 White JM, Rumbold GR. Behavioural effects of histamine and its antagonists: a review. *Psychopharmacology* 1988; **95**: 1–14.
- 39 Kubes P, Kanwar S. Histamine induces leukocyte rolling in post-capillary venules. A P-selectin-mediated event. *J Immunol* 1994; **152**: 3570–7.
- 40 Jiménez-Sainz MC, Murga C, Kavelaars A, Jurado-Pueyo M, Krakstad BF, Heijnen CJ, Mayor F, Aragay AM. G protein-coupled receptor kinase 2 negatively regulates chemokine signaling at a level downstream from G protein subunits. *Mol Biol Cell* 2006; **17**: 25–31.
- 41 Hamilton KK, Sims PJ. Changes in cytosolic Ca²⁺ associated with von Willebrand factor release in human endothelial cells exposed to histamine. Study of microcarrier cell monolayers using the fluorescent probe indo-1. *J Clin Invest* 1987; **79**: 600–8.
- 42 Tiruppathi C, Yan W, Sandoval R, Naqvi T, Pronin AN, Benovic JL, Malik AB. G protein-coupled receptor kinase-5 regulates thrombin-activated signaling in endothelial cells. *Proc Natl Acad Sci USA* 2000; **97**: 7440–5.
- 43 Asako H, Kurose I, Wolf R, DeFrees S, Zheng ZL, Phillips ML, Paulson JC, Granger DN. Role of H1 receptors and P-selectin in histamine-induced leukocyte rolling and adhesion in postcapillary venules. *J Clin Invest* 1994; **93**: 1508–15.
- 44 McEver RP. Selectins: lectins that initiate cell adhesion under flow. *Curr Opin Cell Biol* 2002; **14**: 581–6.
- 45 Mayadas TN, Johnson RC, Rayburn H, Hynes RO, Wagner DD. Leukocyte rolling and extravasation are severely compromised in P selectin-deficient mice. *Cell* 1993; **74**: 541–54.
- 46 Norman KE, Moore KL, McEver RP, Ley K. Leukocyte rolling in vivo is mediated by P-selectin glycoprotein ligand-1. *Blood* 1995; **86**: 4417–21.
- 47 Johnson-Tidey RR, McGregor JL, Taylor PR, Poston RN. Increase in the adhesion molecule P-selectin in endothelium overlying atherosclerotic plaques. Coexpression with intercellular adhesion molecule-1. *Am J Pathol* 1994; **144**: 952–61.
- 48 Detmar M, Brown LF, Schon MP, Elicker BM, Velasco P, Richard L, Fukumura D, Monsky W, Claffey KP, Jain RK. Increased microvascular density and enhanced leukocyte rolling and adhesion in the skin of VEGF transgenic mice. *J Invest Dermatol*. 1998; **111**: 1–6.
- 49 Telek G, Ducroc R, Scoazec JY, Pasquier C, Feldmann G, Roze C. Differential upregulation of cellular adhesion molecules at the sites of oxidative stress in experimental acute pancreatitis. *J Surg Res* 2001; **96**: 56–67.
- 50 McMurray RW. Adhesion molecules in autoimmune disease. *Semin Arthritis Rheum* 1996; **25**: 215–33.
- 51 Grober JS, Bowen BL, Ebling H, Athey B, Thompson CB, Fox DA, Stoolman LM. Monocyte-endothelial adhesion in chronic rheumatoid arthritis. In situ detection of selectin and integrin-dependent interactions. *J Clin Invest* 1993; **91**: 2609–19.
- 52 Bullard DC, Mobley JM, Justen JM, Sly LM, Chosay JG, Dunn CJ, Lindsey JR, Beaudet AL, Staite ND. Acceleration and increased severity of collagen-induced arthritis in P-selectin mutant mice. *J Immunol* 1999; **163**: 2844–9.
- 53 Pendu R, Terraube V, Christophe OD, Gahmberg CG, de Groot PG, Lenting PJ, Denis CV. P-selectin glycoprotein ligand 1 and beta2-integrins cooperate in the adhesion of leukocytes to von Willebrand factor. *Blood* 2006; **108**: 3746–52.
- 54 Dole VS, Bergmeier W, Mitchell HA, Eichenberger SC, Wagner DD. Activated platelets induce Weibel-Palade-body secretion and leukocyte rolling in vivo: role of P-selectin. *Blood* 2005; **106**: 2334–9.
- 55 Gawaz M, Langer H, May AE. Platelets in inflammation and atherogenesis. *J Clin Invest* 2005; **115**: 3378–84.
- 56 Yeo EL, Sheppard JA, Feuerstein IA. Role of P-selectin and leukocyte activation in polymorphonuclear cell adhesion to surface adherent activated platelets under physiologic shear conditions (an injury vessel wall model). *Blood* 1994; **83**: 2498–507.
- 57 Giblin JP, Hewlett LJ, Hannah MJ. Basal secretion of von Willebrand factor from human endothelial cells. *Blood* 2008; **112**: 957–64.
- 58 Ewenstein BM, Warhol MJ, Handin RI, Pober JS. Composition of the von Willebrand factor storage organelle (Weibel-Palade body) isolated from cultured human umbilical vein endothelial cells. *J Cell Biol* 1987; **104**: 1423–33.
- 59 Howell GJ, Herbert SP, Smith JM, Mittar S, Ewan LC, Mohammed M, Hunter AR, Simpson N, Turner AJ, Zachary I, Walker JH, Ponnambalam S. Endothelial cell confluence regulates Weibel-Palade body formation. *Mol Membr Biol* 2004; **21**: 413–21.
- 60 Takano M, Meneshian A, Sheikh E, Yamakawa Y, Wilkins KB, Hopkins EA, Bulkley GB. Rapid upregulation of endothelial P-selectin expression via reactive oxygen species generation. *Am J Physiol Heart Circ Physiol* 2002; **283**: H2054–61.
- 61 Kim J, Ahn S, Ren XR, Whalen EJ, Reiter E, Wei H, Lefkowitz RJ. Functional antagonism of different G protein-coupled receptor kinases for beta-arrestin-mediated angiotensin II receptor signaling. *Proc Natl Acad Sci USA* 2005; **102**: 1442–7.
- 62 Ren XR, Reiter E, Ahn S, Kim J, Chen W, Lefkowitz RJ. Different G protein-coupled receptor kinases govern G protein and beta-arrestin-mediated signaling of V2 vasopressin receptor. *Proc Natl Acad Sci USA* 2005; **102**: 1448–53.
- 63 Fredericks ZL, Pitcher JA, Lefkowitz RJ. Identification of the G protein-coupled receptor kinase phosphorylation sites in the human beta2-adrenergic receptor. *J Biol Chem* 1996; **271**: 13796–803.
- 64 Ge X, Low B, Liang M, Fu J. Angiotensin II directly triggers endothelial exocytosis via protein kinase C-dependent protein kinase D2 activation. *J Pharmacol Sci* 2007; **105**: 168–76.
- 65 Vischer UM, Wollheim CB. Epinephrine induces von Willebrand factor release from cultured endothelial cells: involvement of cyclic AMP-dependent signalling in exocytosis. *Thromb Haemost* 1997; **77**: 1182–8.
- 66 Kaufmann JE, Oksche A, Wollheim CB, Gunther G, Rosenthal W, Vischer UM. Vasopressin-induced von Willebrand factor secretion from endothelial cells involves V2 receptors and cAMP. *J Clin Invest* 2000; **106**: 107–16.