

SPATIAL AND TEMPORAL PATTERNS OF CORAL BLEACHING AROUND BUCK ISLAND REEF NATIONAL MONUMENT, ST. CROIX, U.S. VIRGIN ISLANDS



RANDALL D. CLARK¹, CHRISTOPHER F.G. JEFFREY¹, KIMBERLY WOODY^{1*} AND ZANDY HILLIS-STARR²

¹NOAA/NOS/NCCOS/CCMA BIOGEOGRAPHY BRANCH, SILVER SPRING, MD 20910 USA; ²BUCK ISLAND REEF NATIONAL MONUMENT, ST. CROIX USVI 00820

Program # 18.731

ABSTRACT

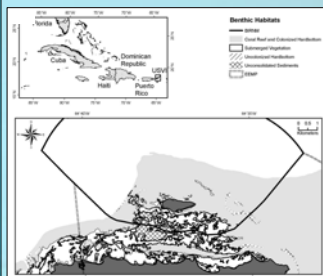
Limited information currently exists on the recovery periods of bleached corals as well as the spatial extent, causative factors, and the overall impact of bleaching on coral reef ecosystems. During October, 2005, widespread coral bleaching was observed within Buck Island Reef National Monument (BUI) St. Croix, USVI. The bleaching event was preceded by 10 weeks of higher than average water temperatures (28.9-30.1°C). Random transects (100 m²) over hard bottom habitats (N=94) revealed that approximately 51% of live coral cover was bleached. Nineteen of 23 coral species within 16 genera and two hydrocoral species exhibited signs of bleaching; species-specific bleaching patterns were variable throughout the study area. Coral cover for *Montastraea annularis* and species of the genus *Agaricia* were the most affected, while other species exhibited variability to bleaching. Although a weak but significant negative relationship ($r^2=0.10$, $P=0.0220$) was observed, bleaching was evident at all depths (1.5-28 m). Bleaching was spatially autocorrelated ($P=0.001$) and hot-spot analysis identified a cluster of high bleaching stations northeast of Buck Island. Bleaching was significantly reduced within all depth zones and habitat types upon subsequent monitoring during April (15%) and October (3%) 2006.

INTRODUCTION

During June to October 2005, a significant coral bleaching event took place ranging throughout the Caribbean and the southeastern U.S. Satellite sea surface temperature data indicated that the thermal stress associated with this warm water was the highest experienced during the previous 20 years (NOAA Coral Reef Watch, <http://coralreefwatch.noaa.gov/caribbean2005/>, Accessed 7/02/2008). In October 2005, data on extent and severity of the coral bleaching were recorded during the biannual monitoring of coral reefs in St. Croix, US Virgin Islands conducted by scientists from NOAA's Center for Coastal Monitoring and Assessment's Biogeography Branch (CCMA-BB) and the National Park Service's Buck Island Reef National Monument.

This study quantifies spatial patterns of coral bleaching observed along the northeastern shore of St. Croix comprised of habitats within and adjacent to BUI and the northern portion of the East End Marine Park (EEMP) during October 2005 through October 2006. Specific objectives include:

- 1) describing the extent, severity and spatial patterns of coral bleaching before, during and after the 2005 bleaching event
- 2) correlating coral bleaching with environmental factors such as *in situ* temperature and depth
- 3) describing taxonomic differences in the severity of bleaching experienced by different coral species.



Map of study area around Buck Island Reef National Monument. Buck monument = Buck Island Reef National Monument; EEMP = East End Marine Park



Bleached colony of *Acropora palmata* with a 1m x 1m quadrat overlaid, Oct 2008

APPROACH

- Data on benthic composition were recorded from five 1m² quadrats along randomly selected 25x4 m belt transects (100 m²) as part of a larger project that surveyed 2,790 sites to characterize and monitor fishes and benthic composition in coral reef ecosystems in the US Virgin Island and Puerto Rico between 2001 and 2006.
- Survey sites were selected using a stratified random sampling design (Menza et al, 2006).
- Colonies were considered entirely bleached if they contained white, blotchy/mottled, or pale tissue.
- In situ water temperature data were obtained for January 1999 - December 2006 from a single data logger located at 10 m on the fore-reef at BUI.



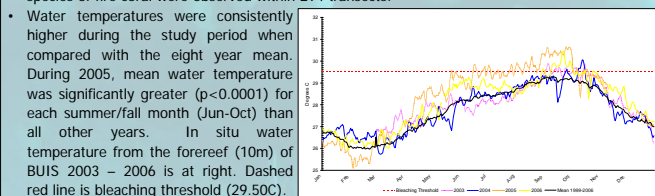
Bleached and diseased *Diploia strigosa* Oct 2005; *Montastraea annularis* bleached Oct 2005; Abutting colonies of *Diploia strigosa* in varying stages of bleaching, Oct 2005

ANALYSES

- Linear regression was used to examine the relationship between depths of sites and proportion of total coral cover bleached at each site.
- Autocorrelation of spatial bleaching patterns was tested using Moran's Index and Geary's C statistic.
- Time series plots of the proportion of live coral that was 'normal' or 'bleached' from Oct 2005 through Oct 2006 examined temporal trends in coral bleaching.

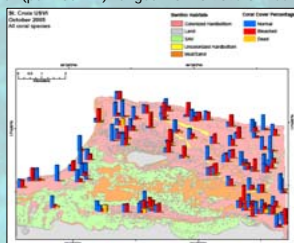
RESULTS

- From Oct 2005 through Oct 2006, 27 scleractinian coral species within 21 genera and two species of fire coral were observed within 294 transects.



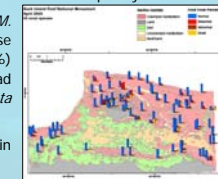
OCTOBER 2005

- Mean percent of live scleractinian and fire coral cover (per 100 m²) ranged from 0.96% on reef rubble to ~ 6% on linear and patch reefs.
- Surveys (n=94) identified 23 scleractinian coral species (16 genera) and two hydrocoral species.
- Bleached corals were observed at 91% of all transects. Bleached colonies were completely white, with few being mottled or pale.
- 51% of the total coral cover within transects was bleached, and species-specific bleaching proportions ranged from 15.8-100%



APRIL 2006 – POST BLEACHING

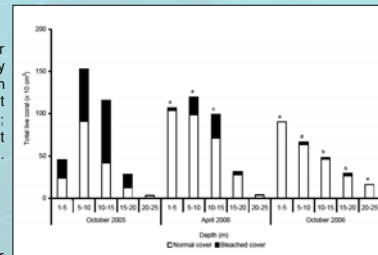
- Bleaching was significantly reduced ($p<0.0001$) throughout the study area during Apr 2006 vs. Oct 2005. Surveys (n=89) identified 31 species of coral where 15% of total coral cover exhibited bleaching. Most colonies were mottled/pale, except *Agaricia*, which were completely bleached.
- 15 species exhibited no bleaching affects. Colonies of *M. annularis* and *D. strigosa* were less bleached than those observed in Oct 2005. *Agaricia* cover was less bleached (16%) than observed in Oct 2005 (92%). Only two species had bleaching percentages greater than 50% (*Millepora complanata* and *D. labyrinthiformis*) but were infrequently encountered.
- Overall, nearly all species showed a dramatic decrease in bleached cover within all depth zones.



OCTOBER 2006 – ONE YEAR POST BLEACHING

- Bleaching was significantly lower ($p<0.0001$) than during the two previous sampling periods. Surveys (n=93) identified 20 scleractinian coral (5 genera) and two hydrocoral species.
- Bleaching was evident in 14% of transects with 3% of the total coral cover bleached.
- Most species exhibited significant declines in bleached cover within all depth zones compared to Oct 2005 and Apr 2006. Dramatic decreases were observed for *M. annularis*, *P. asteroides*, *Agaricia*, *P. porites*, and *D. strigosa*.

Normal and bleached coral cover within depth zones during study period. a=statistically significant from Oct 2005; b=statistically significant from Oct 2005 and Apr 2006; c=statistically significant from Oct 2005 and Oct 2006. All at alpha=0.05.



CONCLUSIONS

Bleaching events may alter the abundance of functional groups and their component species and have profound effects on the ability of local communities within the ecosystem to resist and recover from future disturbances. A better understanding of these indicators may help managers identify, design and manage protected areas to promote reef ecosystem survival. Results here provide evidence that bleaching has differential effects to the coral community; it is unknown what degree these effects have upon reef community structure. Understanding reef degradation (i.e. coral bleaching) at various scales and the potential for recovery should be a priority for scientifically based conservation and management plans.

CONTACTS

Randall Clark
NOAA/NOS/NCCOS/CCMA/Biogeography Branch
1305 East West Highway
SSMCA, N/SCI-1
Silver Spring, MD 20910
301.713.3028 x 157
Randall.Clark@noaa.gov

Kimberly Woody
NOAA/NOS/NCCOS/CCMA/Biogeography Branch
1305 East West Highway
SSMCA, N/SCI-1
Silver Spring, MD 20910
301.713.3028 x 229
Kimberly.Woody@noaa.gov

Center for Coastal Monitoring and Assessment's Biogeography Branch web site:
<http://biogeog.nos.noaa.gov/>

or
Caribbean coral Reef Ecosystem Monitoring project web site:
http://ccma.nos.noaa.gov/ccosystems/coralreef_fish.html

ACKNOWLEDGEMENTS

This study was made possible by the dedicated efforts of the CCMA and NPS staff and was funded by CCMA, NPS and NOAA's Coral Reef Conservation Program.

CITATIONS

Menza, C., J. Ault, J. Beets, J. Bohsack, C. Caldwell, J. Christensen, A. Friedlander, C. Jeffrey, M. Kendall, J. Luo, M. Monaco, S. Smith and K. Woody. 2006. A Guide to Monitoring Reef Fish in the National Park Service's South Florida/Caribbean Network. NOAA Tech Memo NOS NCCOS 39. Silver Spring MD. 166 pp.

Clark, R., C. Jeffrey, K. Woody and Z. Hillis-Starr. In review. Spatial and Temporal Patterns of Coral Bleaching around Buck Island Reef National Monument, St. Croix, US Virgin Islands. Bulletin of Marine Science.

Woody, K., et al. 2008. Coral Bleaching in the US Virgin Islands in 2005 and 2006. pp 68-72. In: Wilkinson, C. and D. Souter, eds. Status of Caribbean Coral Reefs after Bleaching and Hurricanes in 2005. Global Coral Reef Monitoring Network and Reef and Rainforest Research Center, Townsville. 152 pp.

