

Distributed water balance modeling in the Berchtesgaden National Park

Gabriele Kraller (1), Michael Warscher (2), Ulrich Strasser (3), Harald Kunstmann (2,4), Thomas Marke (3) and Helmut Franz (5)

- (1) University of Salzburg, Department of Geoinformatics – Z_GIS, 5020 Salzburg
- (2) Institute for Meteorology and Climate Research, Atmospheric Environment (IMK-IFU), Kreuzeckbahnstr.19; 82467 Garmisch Partenkirchen
- (3) Institute for Geography, Human-Environment System Research, University of Innsbruck, Innrain 52f/77, 6020 Innsbruck, Austria
- (4) Institute for Geography, Regional Climate and Hydrology, University of Augsburg, Universitätsstr.10, 86159 Augsburg, Germany
- (5) Berchtesgaden National Park Administration, Doktorberg 6, 83471 Berchtesgaden

Contact: gabriele.kraller@sbg.ac.at
michael.warscher@kit.edu

Introduction

The **regional water balance** of mountainous catchments in the northern limestone Alps is affected by the temporal and spatial variability of meteorological parameters, steep gradients and a complex hydrogeological situation. We investigate an Alpine catchment where the water balance is influenced by a karst aquifer and complex snow cover. We apply the **hydrological model WaSiM** (Schulla, 2012) to analyze surface and subsurface water processes in a high Alpine catchment (Fig.1) and to adapt snow and groundwater modeling to the Alpine environment.

Study Area

The test site for our study is situated in the **Berchtesgaden Alps** (Fig. 1) in the northern limestone alps and covers an area of 430 km².

A massive karstified aquifer in the region with a wide range of subsurface flow channels and spring has so far unknown effects on the spatial and temporal dynamic of the water balance due to unknown storage capacities and water flux conditions.

The water balance in the region is controlled by the dynamics of the **snow cover** and the respective water fluxes. High altitudinal gradients and small scale **orographic effects** cause a large temporal and spatial **variability of snow accumulation, storage, redistribution, and ablation**.

Distributed Modeling

The water balance is modeled with the physically based, distributed model WaSiM (Schulla & Jasper, 2007). It is a physically based model that was applied in 50x50m² horizontal resolution. Based on 9 available gauges and the DEM the study area is divided in 9 subbasins. Three head subbasins are situated in high alpine karst terrain (Fig.2). Meteorological input data was provided by 33 weather stations. Spatial input data are the DEM, landuse and soil classification and parameters for the horizontal groundwater model. Fig. 3 presents the modular structure of the hydrological model.

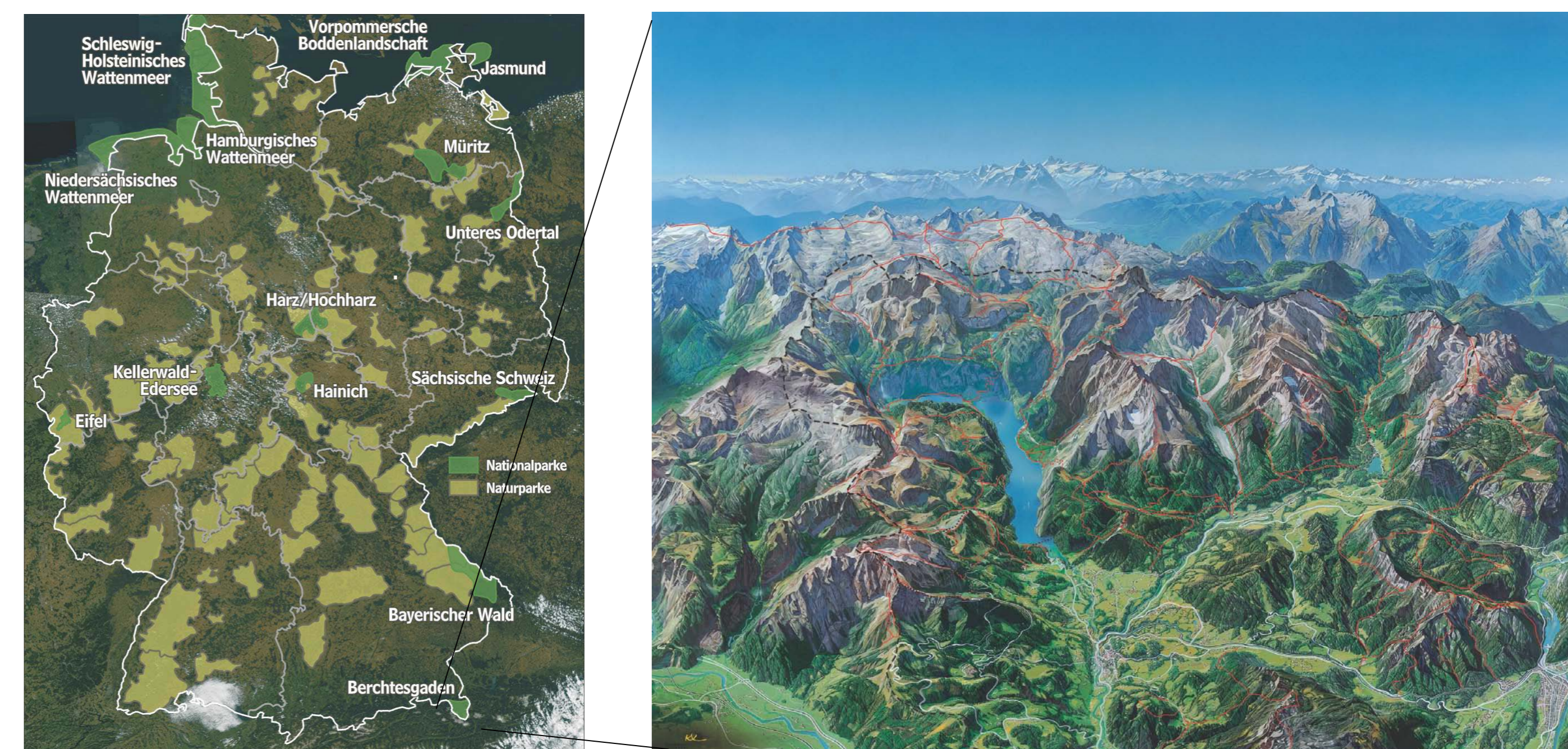


Fig.1: Study area (Images: NPV-BGD)

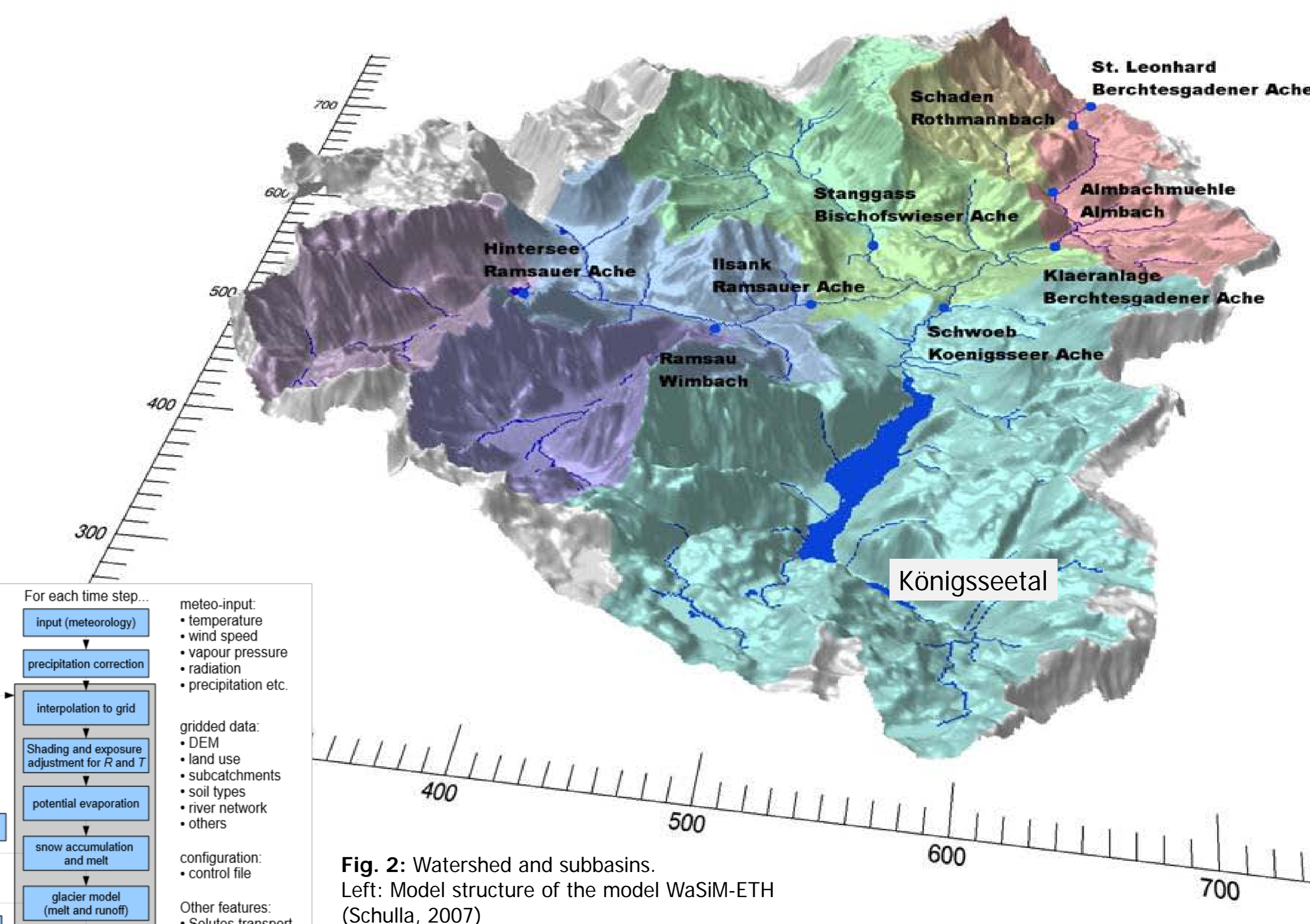


Fig. 2: Watershed and subbasins. Left: Model structure of the model WaSiM-ETH (Schulla, 2007)

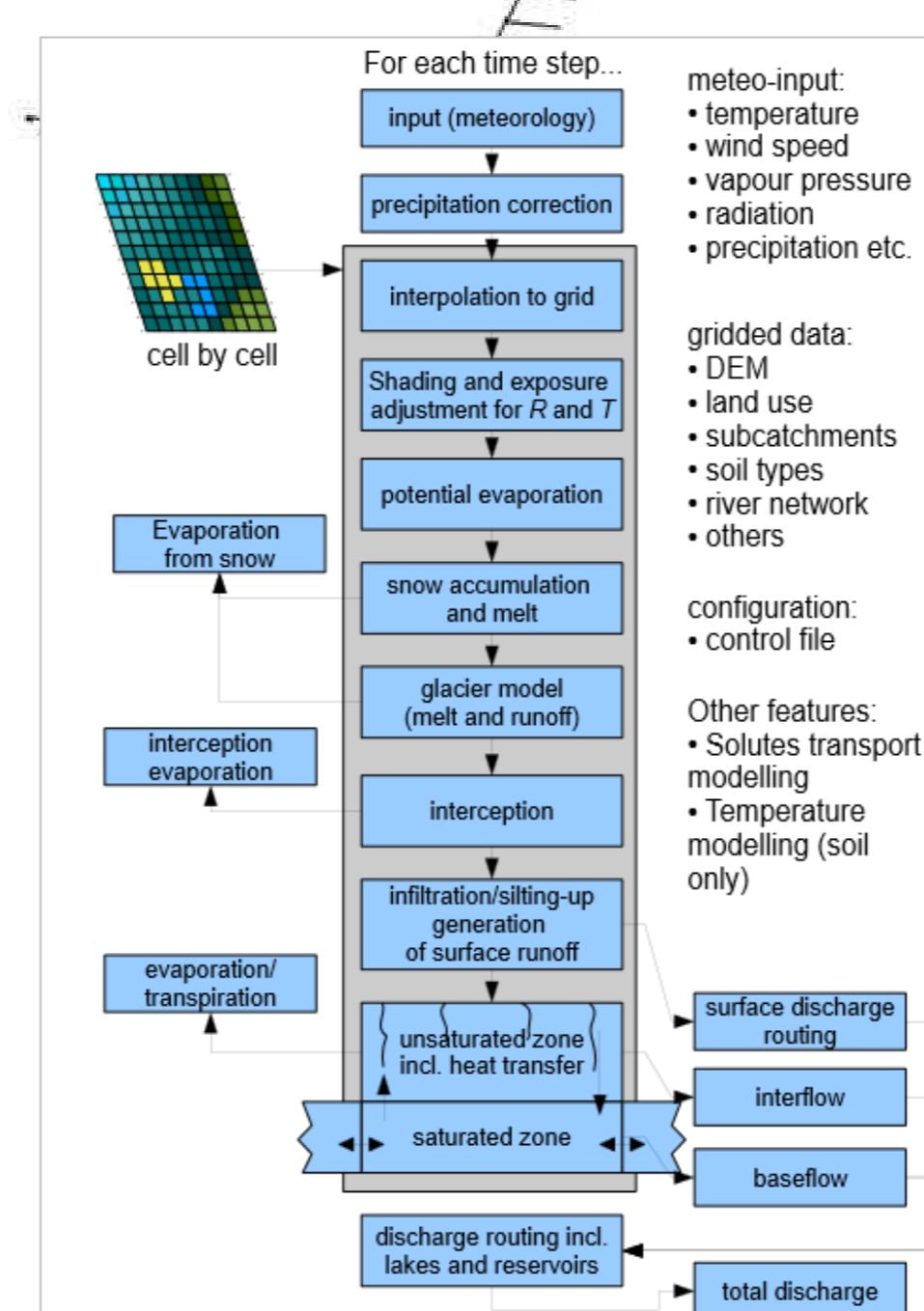


Fig. 3: Model structure of the model WaSiM-ETH (Schulla, 2012)

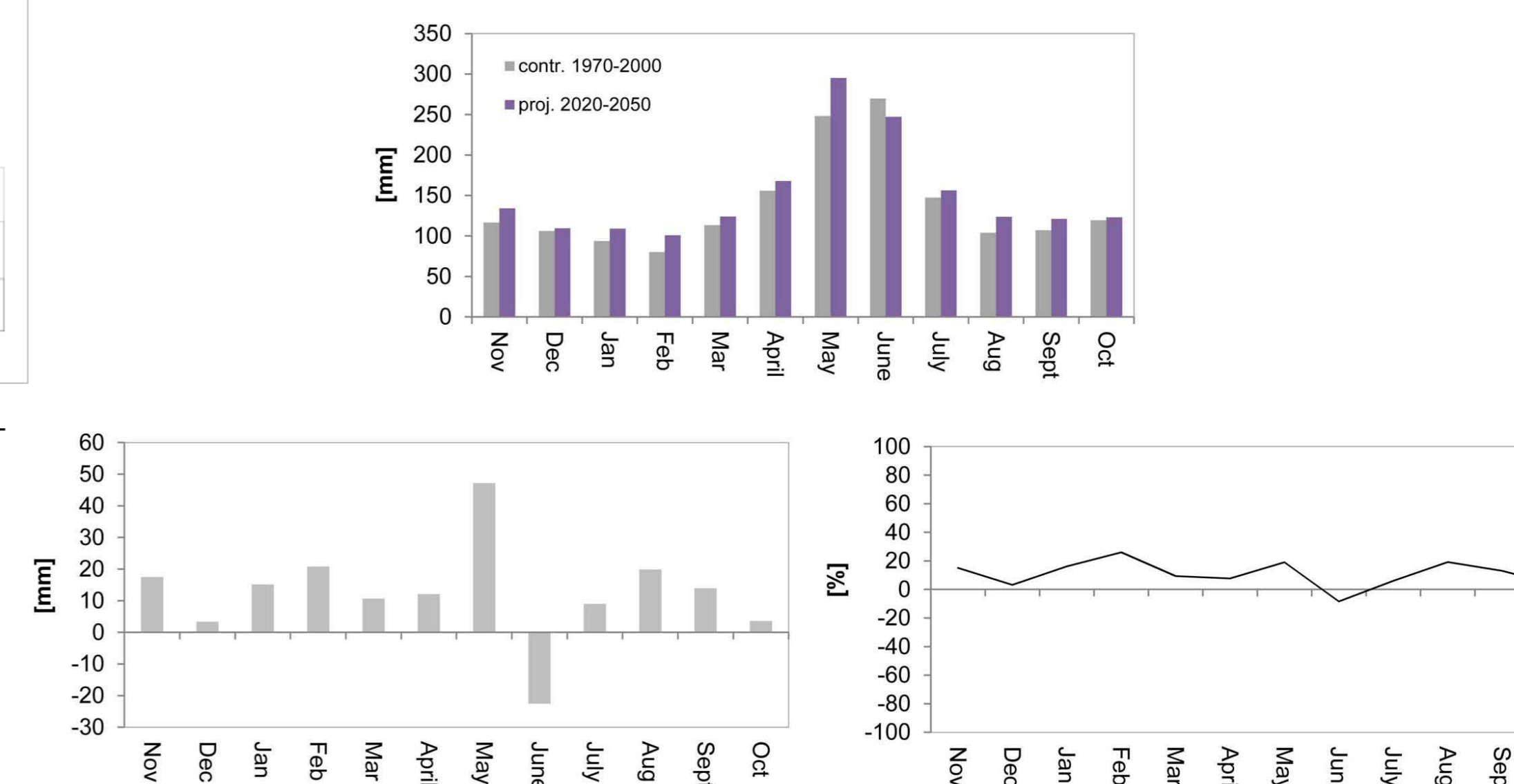


Fig. 8: Modeled runoff at river gauge St. Leonhardt for the control and future time period.

Snow cover dynamics

To improve the **modeling of snow processes**, we have complemented WaSiM-ETH with principles derived from the **high-alpine specific snow model AMUNDSEN** (Strasser, 2008). Subsequent changes in modeled snow cover dynamics and discharge generation are compared and validated via runoff gauge data, measurements of snow water equivalent, and remote sensing data. Model efficiency is increased by the simulation of **lateral snow transport** and the calculation of snow ablation using an **energy balance** approach (Warscher et al., 2013) (Fig 4., Fig. 5).

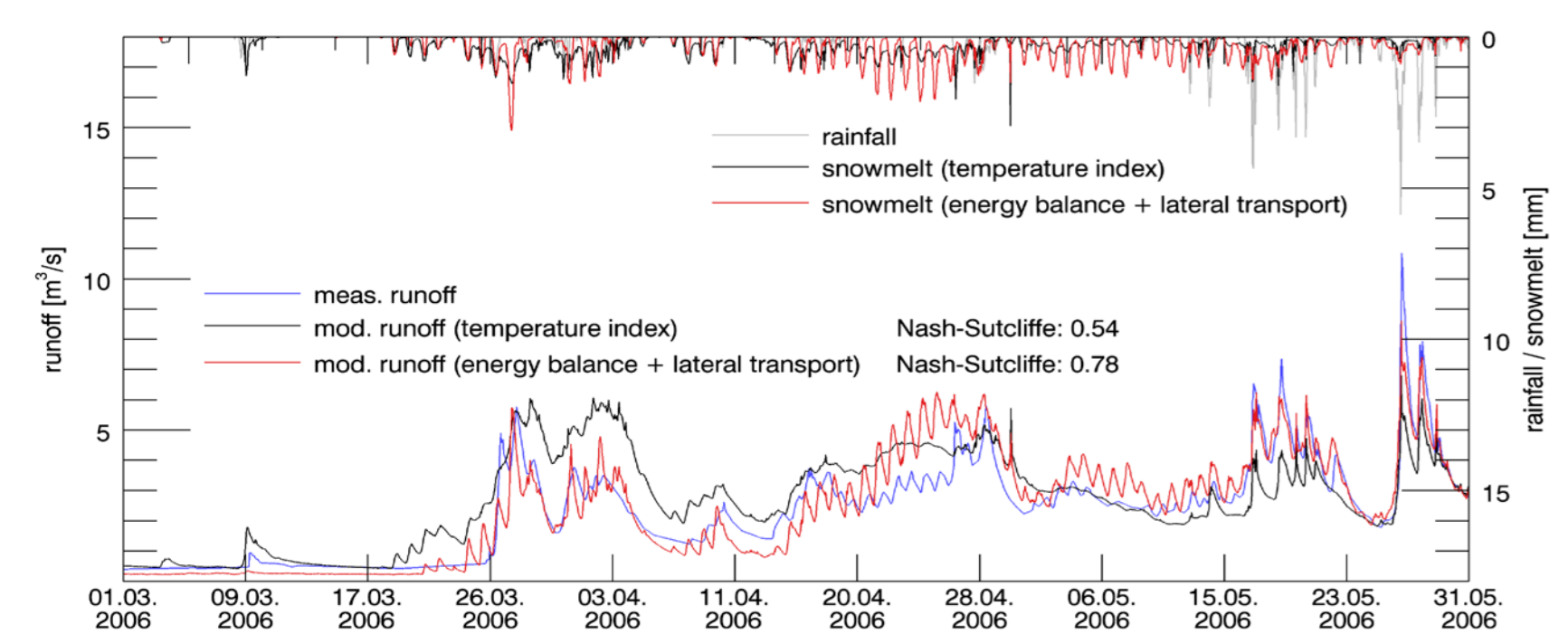


Fig. 4: Runoff, snowmelt and rainfall at gauge Hintersee (melting period spring 2006)

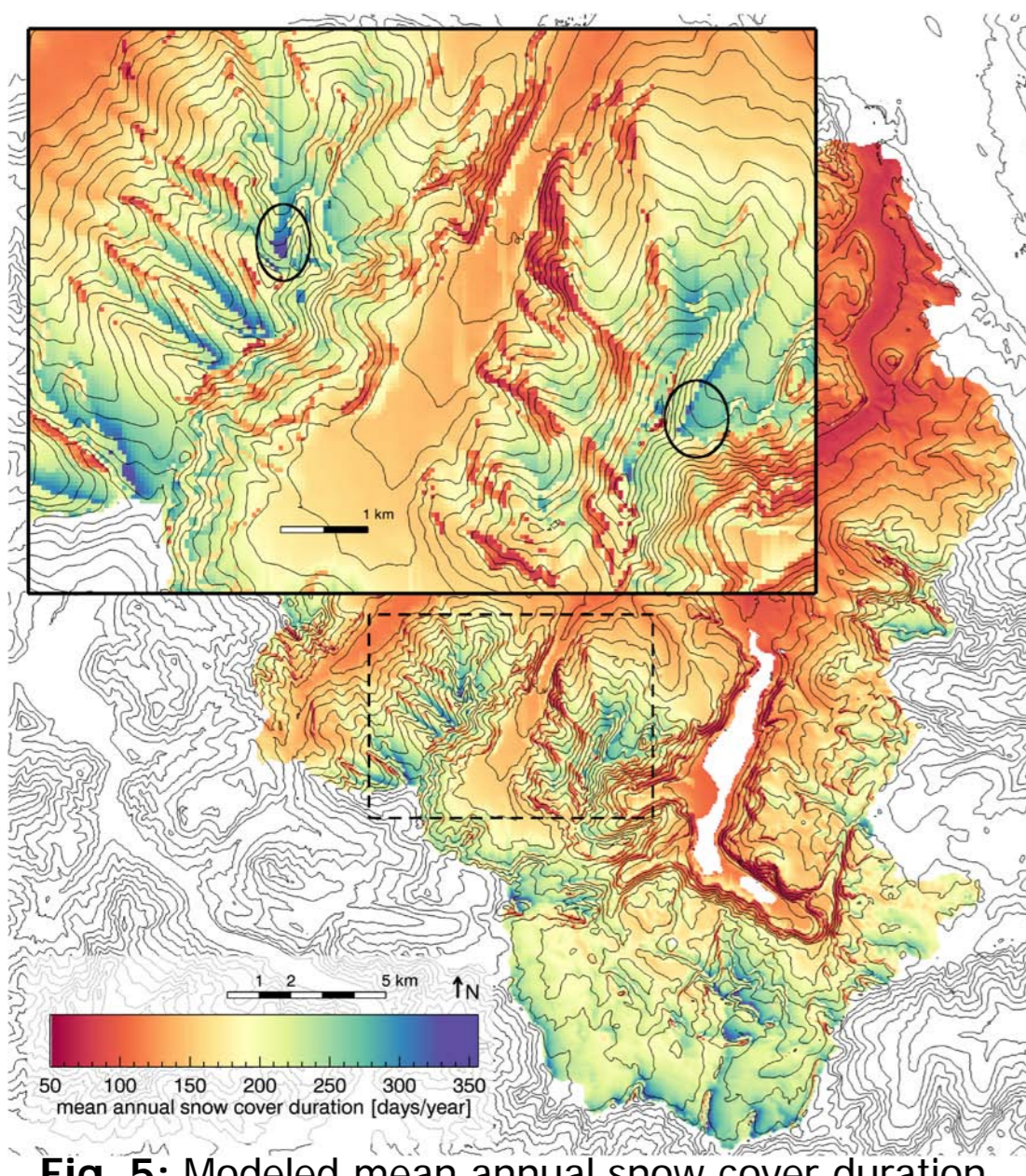


Fig. 5: Modeled mean annual snow cover duration

Subsurface water storage

The model assumes porous conditions and does not account for karst environments within the groundwater module. Results showed that **runoff is systematically under- and overestimated** in three high Alpine neighboring karstified subbasins. This corresponds with the outcomes of the comprehensive summary of karst research in the area (Kraller et al., 2011) and indicates hydrological model limitations in karst terrain. We developed an artificial network, a statistical-empirical method to account for the missing water fluxes in the hydrological model.

The **Artificial Neural Network** (Fig.6) reproduces heterogeneous karst water storage and serves as **dynamic influx in the groundwater module** of the hydrological model (Fig.7). We applied this method in the subbasin Königsseetal (Kraller et al., 2012).

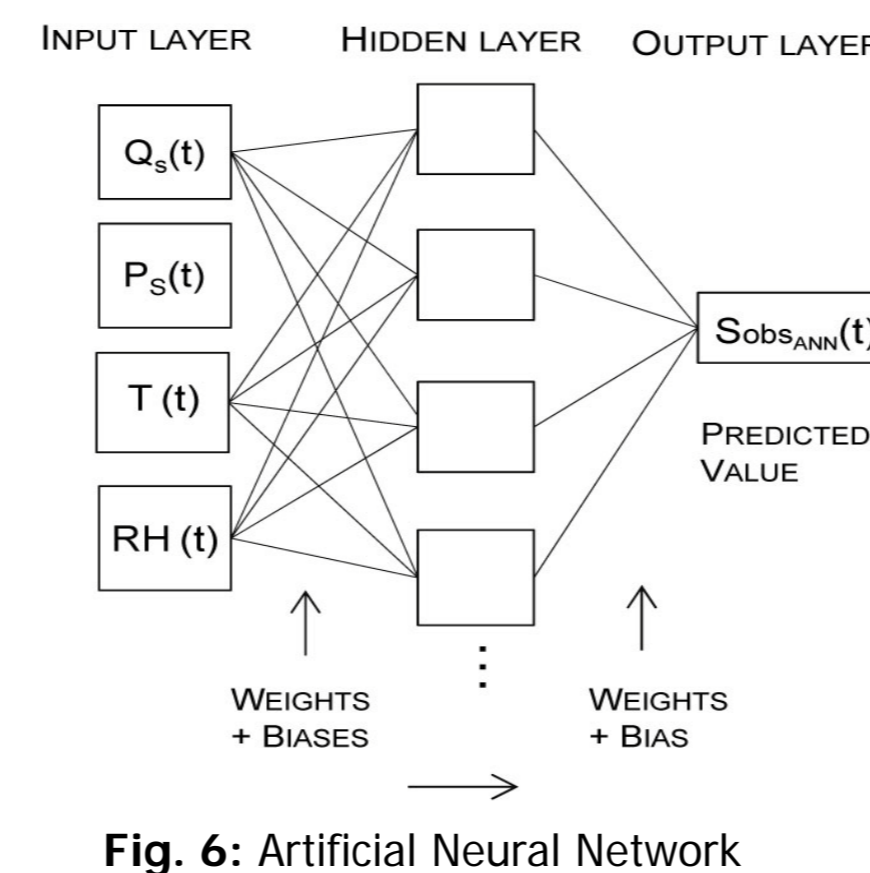


Fig. 6: Artificial Neural Network

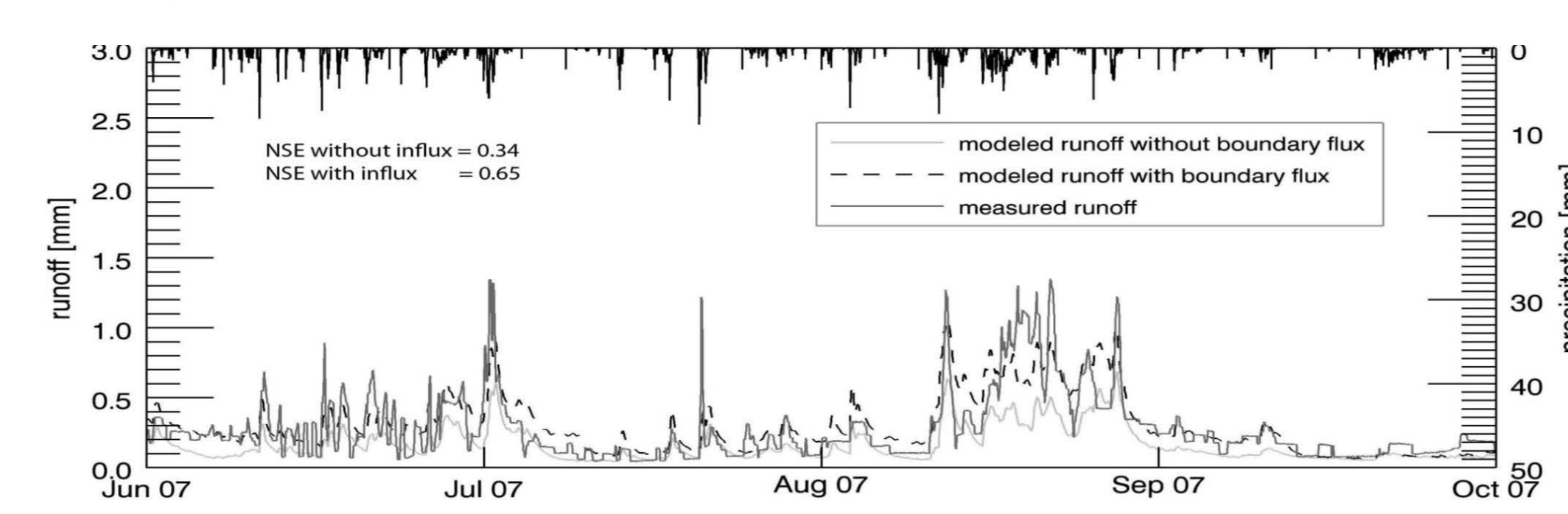


Fig. 7: Hydrological model results before and after model correction in subbasin Königsseetal. NSE = Nash Sutcliffe Efficiency

REFERENCES:

- Kraller, Gabriele; Strasser, Ulrich; Franz, Helmut.: *Effect of Alpine Karst on the hydrology of the basin "Berchtesgadener Ache": a comprehensive summary of karst research in the Berchtesgaden Alps*, in: Eco.mont: journal on protected mountain areas research 3,1 (2011), 19 - 28.
- Kraller, Gabriele; Warscher, Michael; Vogl, Stefanie; Marke, Thomas; Strasser, Ulrich; Kunstmann, Harald: *Water balance estimation in high Alpine terrain by combining distributed modeling and a neural network approach (Berchtesgaden Alps, Germany)*, in: Hydrology and Earth System Sciences 16 (2012), 1969 - 1990.
- Warscher, Michael; Strasser, Ulrich; Kraller, Gabriele; Franz, Helmut.; Kunstmann, Harald. (2013): *Performance of Complex Snow Cover Descriptions in a Distributed Hydrological Model System - A Case Study for the High Alpine Terrain of the Berchtesgaden Alps* In: Water Resources Research (2013). Article first published online: 28 MAY 2013, DOI: 10.1002/wrcr.20219
- Schulla, J. (2012). Model Description WASIM (Water Balance Simulation Model). Hydrology Software Consulting J. Schulla, Zürich
- Strasser, Ulrich (2008). Modelling of the mountain snow cover in the Berchtesgaden National Park, Berchtesgaden National Park research report, Nr. 55, Berchtesgaden.