

BRCC36A is epistatic to BRCA1 in DNA crosslink repair and homologous recombination in *Arabidopsis thaliana*

Astrid S. Block-Schmidt, Stefanie Dukowic-Schulze, Kristina Wanieck, Wim Reidt and Holger Puchta*

Karlsruhe Institute of Technology, Botanical Institute II, Fritz-Haber-Weg 4, 76131 Karlsruhe, Germany

Received June 24, 2010; Revised and Accepted July 29, 2010

ABSTRACT

BRCA1 is a well-known tumor suppressor protein in mammals, involved in multiple cellular processes such as DNA repair, chromosome segregation and chromatin remodeling. Interestingly, homologs of BRCA1 and several of its complex partners are also found in plants. As the respective mutants are viable, in contrast to mammalian mutants, detailed analyses of their biological role is possible. Here we demonstrate that the model plant *Arabidopsis thaliana* harbors two homologs of the mammalian BRCA1 interaction partner BRCC36, AtBRCC36A and AtBRCC36B. Mutants of both genes as well as the double mutants are fully fertile and show no defects in development. We were able to show that mutation of one of the homologs, AtBRCC36A, leads to a severe defect in intra- and interchromosomal homologous recombination (HR). A HR defect is also apparent in *Atbrca1* mutants. As the *Atbrcc36a/Atbrca1* double mutant behaves like the single mutants of AtBRCA1 and AtBRCC36A both proteins seem to be involved in a common pathway in the regulation of HR. AtBRCC36 is also epistatic to AtBRCA1 in DNA crosslink repair. Upon genotoxic stress, AtBRCC36A is transferred into the nucleus.

INTRODUCTION

Breast cancer is one of the most important diseases of women in the western world. Predisposition is correlated with mutations in genes that affect the stability and integrity of the genome. Breast cancer susceptibility proteins BRCA1 and BRCA2 belong to the most thoroughly analyzed human proteins of the last two decades (1). Mutations in BRCA1 were first linked to the development

of breast cancer in 1990 (2). The protein functions as an E3 ubiquitin ligase together with its partner, BARD1 (3). The BRCA1/BARD1-heterodimer is involved in a number of processes such as cell-cycle control, DNA repair and chromatin remodeling (4–6). Homozygous mutations in these genes result in embryonic lethality in mice, which shows their developmental importance.

To fulfill its functions the heterodimer interacts with a sequence of partners in several different complexes (7). In mammals, phosphorylated BRCA1 is recruited to double-strand breaks (DSB) through its interaction with ABRA1 and RAP80 (8,9). The protein RAP80 binds K63-linked ubiquitin chains, made by the proteins UBC13, RNF8 and RNF168, on gammaH2AX and thereby guides BRCA1 and its partners to the DSB. In 2003 a complex called BRCC (BRCA1/BRCA2-containing complex), involved in repair of ionizing radiation induced damage, was described in mammals. It contained BRCA1, BARD1, BRCA2, RAD51, BRCC36 and BRCC45 in addition to other proteins (10). Chen *et al.* (11) showed that phosphorylation of BRCA1 by ATM and CHK2 depends on BRCC36 and that BRCA1 foci formation is impaired in BRCC36 depleted cells. Human BRCC36 has a deubiquitinating activity encoded by its N-terminal MPN-domain, which displays sequence homology with the human Pohl/Pad1 subunit of the 26S proteasome and with subunit 5 (Jab1) of the COP9 signalosome.

Beside the BRCC another BRCC36-containing complex, called BRISC (BRCC36 isopeptidase complex) exists in mammals. In this complex, BRCC36 works together with the proteins NBA1, ABRO1, ABRA1 and BRCC45 in cleaving K63-linked ubiquitin chains and therefore seems to antagonize the ubiquitinating function of UBC13, RNF8 and RNF168 (12,13). But beside the canonical role of deubiquitinating enzymes in antagonizing ubiquitin ligase activity, BRCC36 also enhances BRCA1/BARD1 E3 ubiquitin ligase activity (10). Dong *et al.* (10) could show that *BRCC36* expression is increased in breast cancer tumors. So a possible scenario may involve the

*To whom correspondence should be addressed. Tel: +49 721 608 8894; Fax: +49 721 608 4874; Email: holger.puchta@bio.uni-karlsruhe.de

disruption of the normal function of the BRCA1-containing complex by overexpressed BRCC36 (10).

Indications that the BRCA1 function is widely conserved in multicellular organisms were described several years ago when orthologs of the gene were identified in other animal species, like *Caenorhabditis elegans* and *Xenopus laevis* (14,15). Surprisingly, BRCA1 as well as BRCA2 orthologs are also present in higher plants (16–18). Moreover, our group was able to identify a BARD1 ortholog in the model plant *Arabidopsis thaliana* (19). As the respective mutants are viable in plants, we could show that AtBRCA1 and AtBARD1 are epistatic in DNA crosslink repair. Mutation of AtBARD1 was correlated with severe defect in homologous recombination (HR). Now we were able to identify two BRCC36 orthologs in *Arabidopsis* and could address for the first time the questions of whether AtBRCC36 is involved in HR and crosslink repair and whether it is epistatic to AtBRCA1.

MATERIALS AND METHODS

See Supplementary Data for details of the primers (Supplementary Table SI) and raw data of the sensitivity and HR-assays (Supplementary Table SII and III).

Analysis of T-DNA insertion lines

Seeds were obtained from the GABI and SALK collections (20,21). Seeds derived from heterozygous plants were cultivated in soil, and PCR assays with primers flanking the T-DNA insertions were used to screen 2- to 3-week-old plants. Plants homozygous for the T-DNA insertion were propagated further. The integration sites for the *Atbrcc36a* and *b* mutants were determined with primer combinations specific for the left or right border of the T-DNA and genomic sequences within the corresponding gene (Figure 2). PCR products were purified and sequenced (GATC Biotech, Konstanz, Germany).

RNA extraction and real-time-PCR

RNA from young *Arabidopsis* plantlets was isolated by using the RNeasy Plant Mini Kit from Qiagen (Hilden) according to the instructions of the manufacturer. Reverse transcription was performed according to the protocol of the RevertAid™ First Strand cDNA synthesis Kit from Fermentas (St Leon-Rot). The cDNA produced was used for PCRs to evaluate the mRNA level of the sequences in front of, spanning, and behind the T-DNA insertion sites in the interrupted genes. Moreover, the cDNA was used for quantitative Real-Time PCR (Figure 1B). Real-time PCR was performed as described in Chen *et al.* (22). For γ -irradiation the radioactive isotope cobalt-60 (^{60}Co) was used (Institute of Toxicology and Genetics, Karlsruhe Institute of Technology).

HR-assay

Plants homozygous for the appropriate T-DNA insertion and the HR reporter line 651 or IC9C, respectively (23,24), were identified by PCR screening and used for the assays. As an internal control, wild-type plants segregating from the cross were used. Seeds were sterilized

using 6% NaOCl solution and plated on GM. After 7 days, 15 seedlings for 651 and 20 for IC9C were transferred into halves of Petri dishes containing 10 ml of pure liquid GM. To induce HR 1 day later, bleomycin was added to a final concentration of 5 $\mu\text{g}/\text{ml}$. After five additional days for 651 and six for IC9C in liquid culture the seedlings were transferred into a staining solution (25). After two more days at 37°C, the seedlings were incubated in 70% ethanol for 16 h at 60°C, and subsequently, the number of blue sectors on each plant was determined by using a binocular microscope. The HR assays were repeated independently at least three times. The results were normalized to the appropriate wild-type, and the mean values and standard deviations were determined (Figures 3 and 4). To exclude artifacts due to reporter gene silencing, expression of the 5' part of the GUS gene in the lines was verified by real-time PCR (data not shown).

Mutagen assays

Homozygous seeds from all lines, the double mutant and Col-0 wild-type were sterilized and plated on GM. After 7 days 10 seedlings were transferred into six-well plates containing 3 ml of pure liquid GM per well. One day later another 3 ml of liquid GM was added with the indicated concentration of the mutagen MMC. After 14 days the seedlings were taken out, pressed on paper towels to remove any excess liquid and weighed. For each experiment, the fresh weight of treated plants was normalized to that of the untreated plants of each line. All experiments were performed at least six times, and the mean value for each line was compared to the mean value for the wild-type for the corresponding mutagen concentration (Figure 6).

Cloning of fusion constructs

BRCC36A was fused to the N-terminus of YFP by first cloning YFP into the vector 35SpBARN (26) and then cloning the ORF of *BRCC36A* upstream of YFP. This construct was stably transformed by *Agrobacterium* transformation as described in Clough and Bent (27). Images were taken from epidermal cells of 2-week-old seedlings with a Zeiss Axio Imager M1 microscope with a Zeiss AxioCam MRm camera (Figure 5).

RESULTS

Two BRCC36 homologs are present in *A. thaliana*

To identify BRCC36 homologs, a database search was done with tblastn using human BRCC36 as the template (NP_077308). Two significant hits were found on Chromosome 1 and 3: At1g80210 (*BRCC36A*) and At3g06820 (*BRCC36B*). The genes consist of 2921 bp (At1g80210) and 2594 bp (At3g06820), respectively, including UTRs. They each contain 10 exons. The corresponding proteins have a length of 406 amino acids and 405 amino acids, respectively. In comparison to human BRCC36 the proteins show an overall identity of 31.3% (At1g80210) and 30.1% (At3g06820). Both proteins,

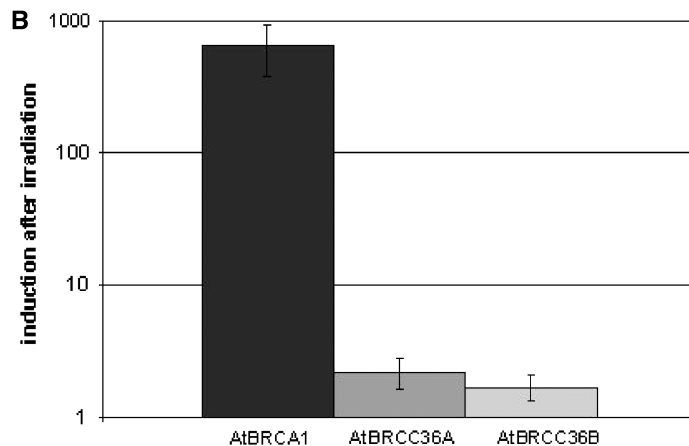
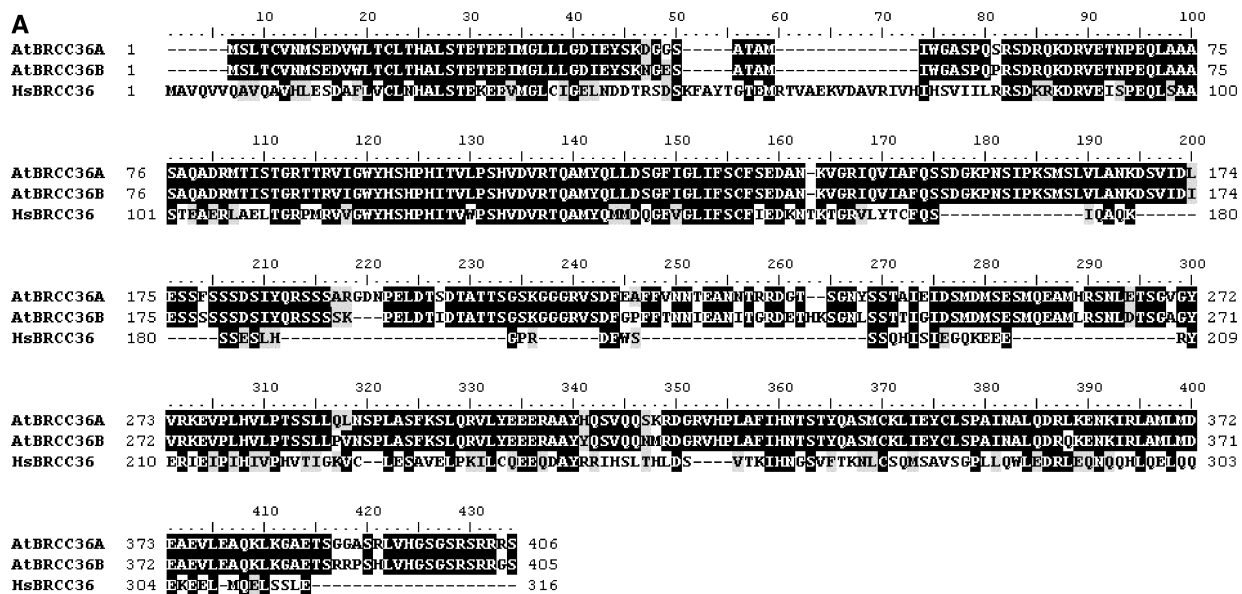


Figure 1. (A) Comparison of the amino acid sequence of HsBRCC36 with the sequences of AtBRCC36A and B. Identical amino acids are marked with black boxes, similar amino acids are shaded. (B) Expression of AtBRCC36A and B compared to the expression of AtBRCA1 after γ -irradiation. The transcription level is given in relation to actin mRNA and the mRNA of the corresponding untreated seedlings, and is the mean of two different qRT-PCR reactions. Bars represent the standard deviation. Black bar, AtBRCA1; grey bar, AtBRCC36A; light grey bar, AtBRCC36B.

BRCC36A and BRCC36B, contain a domain called MPN that is also present in the human protein. Sequence comparison of BRCC36A and BRCC36B revealed that the two proteins are closely related, showing an identity of 90.9%, and apparently arose by a recent gene duplication (Figure 1A). For further analysis we searched the Phytozome V5.0 database for homologs in other plant species. We could find one homolog in each annotated species, except *Vitis vinifera*, *Medicago truncatula* and *Glycine max* where also two homologs were recorded. After analyzing the duplications in *V. vinifera* and *M. truncatula* in more detail we found annotation failures as in both organisms the single copy BRCC36 gene was annotated in two parts. In *G. max* also two nearly identical homologs were annotated, which arose through a tetraploidization event an estimated 10–15 million years ago. The duplication in *A. thaliana* presumably arose in Brassicaceae as we

could also find it in *Arabidopsis lyrata*, but not in other families of the order Brassicales, like the Caryophyllaceae (<http://www.phytozome.net/results.php>). Interestingly most plant proteins have a stretch of ~60–90 amino acids in the middle part of BRCC36, which can not be found in the animal homologs. In this part AtBRCC36A and AtBRCC36B differ most. Further analyses of the *Arabidopsis* genome revealed that the duplication on chromosome 1 and 3 is restricted to the area of AtBRCC36A and B, indicating that it is independent of the most recent genome duplication which arose ~70–90 million years ago [www.tigr.org/tdb/e2k1/ath1/Arabidopsis_genome_duplication.shtml, (28)]. Surprisingly, we could also find a homolog in *Physcomitrella patens*, although no homolog of BRCA1 or BRCA2 has been found in this moss (29). Therefore it is possible that BRCC36 has functions independent of BRCA1 and BRCA2 in this plant.

BRCC36A and BRCC36B are expressed constitutively

In plants, induction of expression after DNA damage can be observed for several genes involved in DNA repair, like *BRCA1* or *RAD51* (16,22,30). To find a possible correlation in transcriptional regulation between *BRCA1* and the *BRCC36* homologs, 2-week-old seedlings were irradiated with γ -rays (75 Gy) and the amount of transcript was measured 1 h after irradiation by quantitative real-time PCR. As previously reported, *BRCA1* was highly induced; whereas no significant change in transcript amount was observed for either of the *BRCC36* homologs (Figure 1B). A similar observation has been reported previously for *BARD1* (19). Both homologs were expressed in all the organs tested (roots, rosette leaves, leaves, flowers, siliques). Expression of *BRCC36A* in siliques and *BRCC36B* in flowers was slightly higher than in the other organs tested. *BRCA1* expression was increased in both organs (data not shown).

BRCC36 is dispensable for vegetative growth and fertility

To elucidate the biological function of *BRCC36A* and *BRCC36B* in plants, mutants of both genes were characterized. The gene loci, At1g80210 and At3g06820, were used to screen the sequence database of T-DNA insertion mutants on the SIGnAL website [Salk Institute Genomic Analysis Laboratory, (20)], and two mutant lines were identified for each gene. For *BRCC36A* the insertions are located in the middle of the gene in intron 4 (GABI_195B04, *Atbrcc36a-1*) and at the end in exon 8 (SALK_130227, *Atbrcc36a-2*). For *BRCC36B* they are located in exon 4 (GABI_773H02, *Atbrcc36b-1*) and in intron 4 (SALK_086443, *Atbrcc36b-2*) (Figure 2).

To test the expression level of the genes in the mutant lines a reverse transcriptase PCR (RT-PCR) was performed with primer pairs binding upstream, across and downstream from the T-DNA insertion. For all lines, expression upstream of the T-DNA could be demonstrated, but no expression was observed with the primer pair

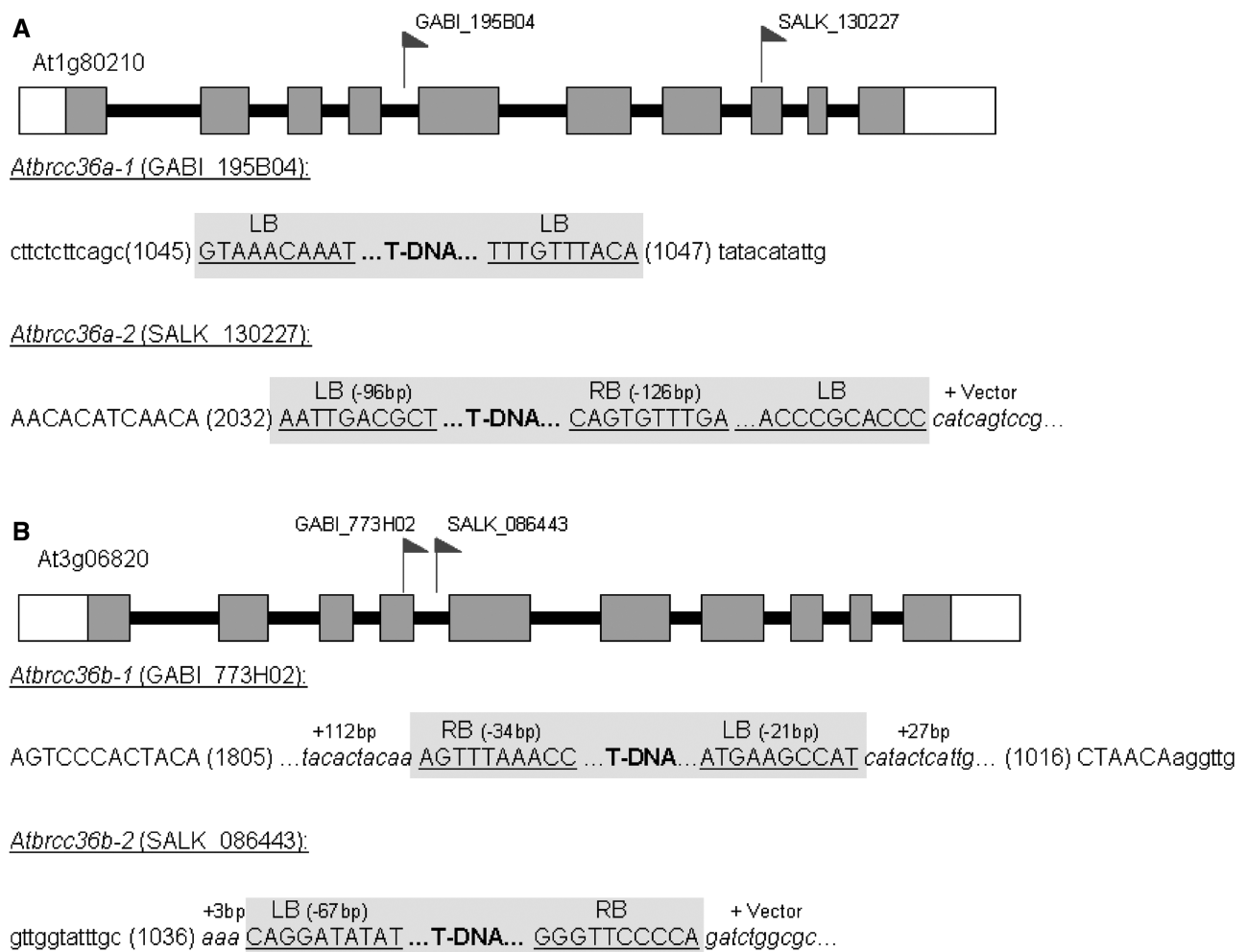


Figure 2. Molecular analysis of the T-DNA insertion lines. Exons are shown by grey boxes, introns are black and UTRs are white. The location of the T-DNA insertions are indicated by small flags and below the gene structures. Intron sequences are displayed as lower-case letters, exons as capital letters. The T-DNA border sequences (LB, left border; RB, right border) are displayed as capital letters. Inserted sequences are italic. The numbers indicate the position in the gene.

spanning the insertion. Downstream from the T-DNA insertion expression was detected for all lines except *Atbrcc36a-2*. In this line, T-DNA integration was coupled with a deletion spanning the rest of the ORF and parts of the 3'-UTR of the gene. In the *Atbrcc36b-1*, line T-DNA insertion was coupled with a duplication of 789 bp of the gene (data not shown). Thus, no full-length *BRCC36A* or *BRCC36B* mRNAs could be detected in the corresponding mutants.

None of the single mutants showed any obvious deviation from normal growth. The plants were fertile and produced seeds in numbers similar to the wild-type. We also obtained *Atbrcc36a-1/b-2* double mutants by crossing, but the absence of both homologs had no visible effect either, as the resulting plants exhibited normal growth and fertility.

BRCC36A is required for intra- and interchromosomal HR

Reidt *et al.* (19) showed that *Atbard1* has a defect in HR. To analyze the role of BRCC36 and BRCA1 in HR, we crossed the reporter line 651 into the mutant backgrounds. This recombination substrate consists of two overlapping fragments of the β -glucuronidase gene (*uidA*) interrupted by a hygromycin resistance marker. These separated *uidA* sequences share a 618-bp overlap in inverted orientation. A functional *uidA* gene can be restored by HR (Figure 3A). Thus, after histochemical staining each recombination event is represented by a blue sector on the plant. Plants homozygous for the T-DNA insertion and

the recombination substrate were used for the assays. Seedlings were incubated in liquid germination medium (GM) with bleomycin (5 μ g/ml), which induces single- and double-strand breaks (31). After staining, recombination events were counted on the seedlings.

The *Atbrcc36a* mutants showed a strong defect in HR: in case of *Atbrcc36a-1* recombination is reduced to about a third of the wild-type level and in case of *Atbrcc36a-2* to about a 10th. In contrast, the *Atbrcc36b* mutants showed no significant reduction in recombination efficiency (Figure 3B): Although *Atbrcc36b-2* seems to be less efficient in HR than *Atbrcc36b-1*, standard deviations overlap with wild-type for both mutants. Thus, despite their high homology, the two homologs seem to play different roles in HR. We also tested whether the *Atbrcc36a-1* allele in its hemizygous state is able to reduce HR. This was not the case (data not shown) making it unlikely that the detected reduction of HR is due to negative complementation of a truncated BRCC36A protein.

As the main mechanism for the restoration of the reporter gene in the line 651 is intrachromosomal recombination (23), we were also interested in the role of BRCC36 in other HR reactions. Therefore, we crossed all four single mutants with the IC9C line and induced DSBs by bleomycin treatment. In this case, restoration of the β -glucuronidase gene is only possible through interchromosomal recombination [Figure 3C, (24)]. Interestingly all mutants behaved in this background in the same manner as in case of the recombination line 651. The HR frequency of *Atbrcc36a-1* was reduced to about a third in comparison to wild-type, whereas in

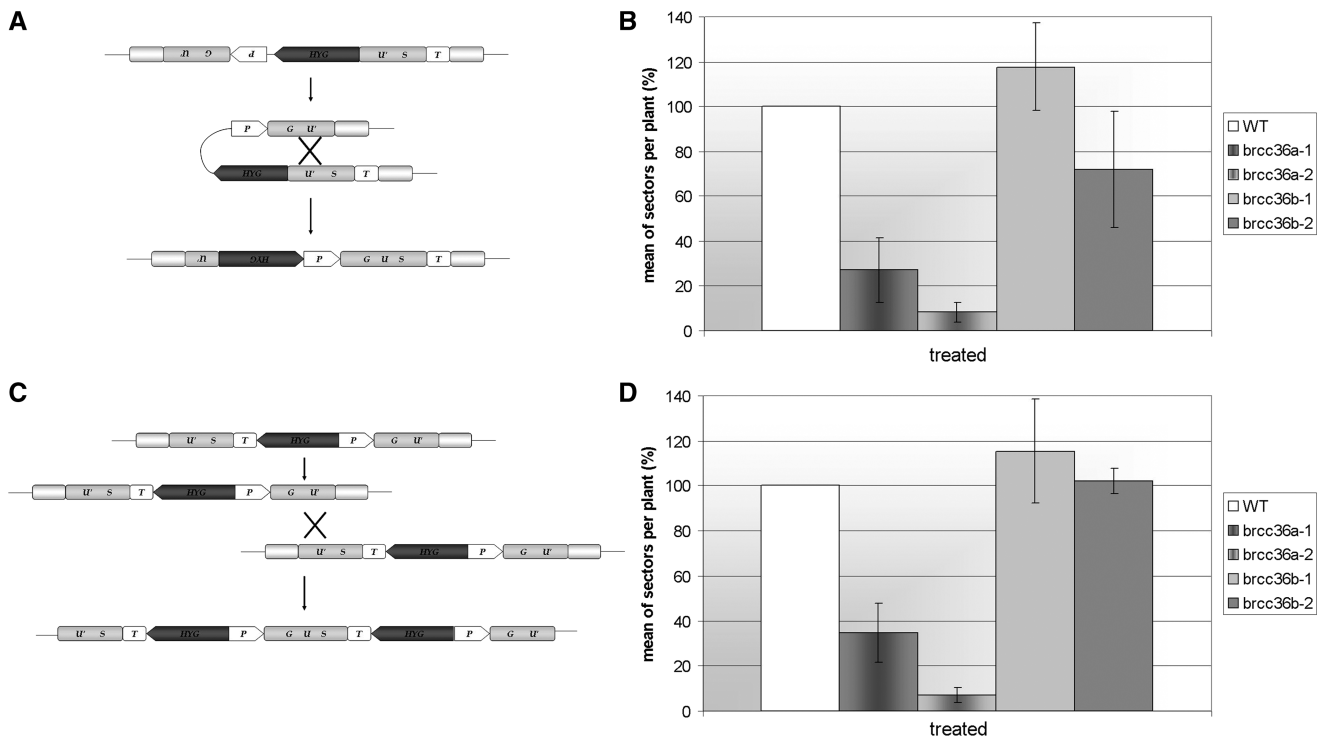


Figure 3. HR efficiencies in *Atbrcc36a-1/-2* and *b-1/-2* (651 and IC9C) compared to wild-type. Figures show the recombination efficiencies in percent, normalized to the wild-type control, in bleomycin treated plants. (A) Recombination trap harbored by the 651 line. (B) HR efficiencies in the 651 background. (C) Recombination trap harbored by the IC9C line. (D) HR efficiencies in the IC9C background. Bars represent the standard deviation.

case of *Atbrcc36a-2* the reduction was more drastic to less than a 10th. Both *Atbrcc36b* mutants did not show any reduction in HR (Figure 3D).

AtBRCC36A is epistatic to AtBRCA1 in HR

To characterize the role of BRCC36A in HR in more detail, we wanted to elucidate its relation to BRCA1. We have been able to show before the BRCA1 is involved in DNA crosslink repair in plants (19), but no data on its involvement in HR have been published. Therefore, we first tested whether BRCA1 is, as its homolog in mammals (32), indeed involved in HR. Plants homozygous for the T-DNA insertion and the recombination substrate 651 were used for the assays. The *BRCA1* insertion line used in this study was already characterized by Reidt *et al.* (19) (SALK_014731, *Atbrca1-1*). We found that the *Atbrca1-1* mutant revealed a defect in HR after bleomycin treatment similar to the *Atbrcc36a* mutants (Figure 4A). Finally, to test a putative epistasis between BRCC36A and BRCA1, we analyzed the recombination behavior of the *Atbrcc36a-1/Atbrca1-1* double mutant and the corresponding single mutants. We found that the *Atbrcc36a-1/Atbrca1-1* double mutant behaved like both single mutants (Figure 4A). Thus, BRCA1 and BRCC36A are indeed epistatic in HR. As a control, we analyzed a *Atbrcc36a-1/b-2* double mutant obtained in the 651 reporter background. The double mutant behaved like the *Atbrcc36a* mutants, indicating again that BRCC36B is dispensable for bleomycin-induced HR (Figure 4B).

BRCC36A is localized in the nucleus after genotoxic stress

We previously demonstrated that BRCA1, together with its partner BARD1, can be found in the plant nucleus (19). To test whether BRCC36A is also located in the nucleus, a C-terminal fusion of the ORF with the yellow fluorescent protein (YFP) was cloned and stably transformed into *Arabidopsis*. Several homozygous single locus lines were subsequently analyzed. Surprisingly, in these lines the protein was localized mainly in the cytoplasm under standard growth conditions (Figure 5A). However, 1h after the application of bleomycin, fluorescence was also

observed in the nucleus (Figure 5B). This observation demonstrates that BRCC36A is transferred into the nucleus upon genotoxic stress.

BRCC36A is epistatic to BRCA1 in DNA crosslink repair

We showed that loss of BRCA1 and BARD1 in *Arabidopsis* results in a mild sensitivity to the DNA-crosslinking agent Mitomycin C [MMC; (19)]. We therefore tested whether the same holds true for the *Atbrcc36a* and *Atbrcc36b* mutants. Surprisingly, not only the *Atbrcc36a* mutants, but also the *Atbrcc36b* mutants showed MMC sensitivity similar to *Atbrca1-1* (Figure 6A). This indicates that in contrast to HR both homologs play a role in crosslink repair. To define the role of the proteins in detail, we obtained double mutants for further testing. The sensitivity of the *Atbrcc36a-1/b-2* double mutant was comparable to that of the single mutants (Figure 6B). To define the role of BRCC36A in relation to BRCA1 in crosslink repair, we combined the *Atbrcc36a-1* mutation with the *Atbrca1-1* mutation (Figure 6C). The double mutant displayed no enhanced sensitivity against MMC compared to the single mutants, indicating that, as in the case of HR, BRCC36A might be epistatic to BRCA1 in this repair pathway, too. However, as the applied MMC concentration is quite high and the growth defects are minor in comparison to other mutants with defects in DNA repair and recombination like *Atmus81* (33) this result should only be taken as hint that both proteins act in the same repair pathway. Treatment with other agents like bleomycin or methyl methane sulfonate did not cause any response different from that of wild-type.

DISCUSSION

Many DNA repair mutants show embryonic lethality in mammals, but are viable in plants (34). This holds also true for the BRCA1 and BRCA2 mutants. Using *A. thaliana* as a model organism it could be demonstrated that besides a defect in double strand break repair in somatic cells (17) BRCA2 is required for meiotic recombination (18). We were able to show that BRCA1 is required for DNA crosslink repair (19) and as reported

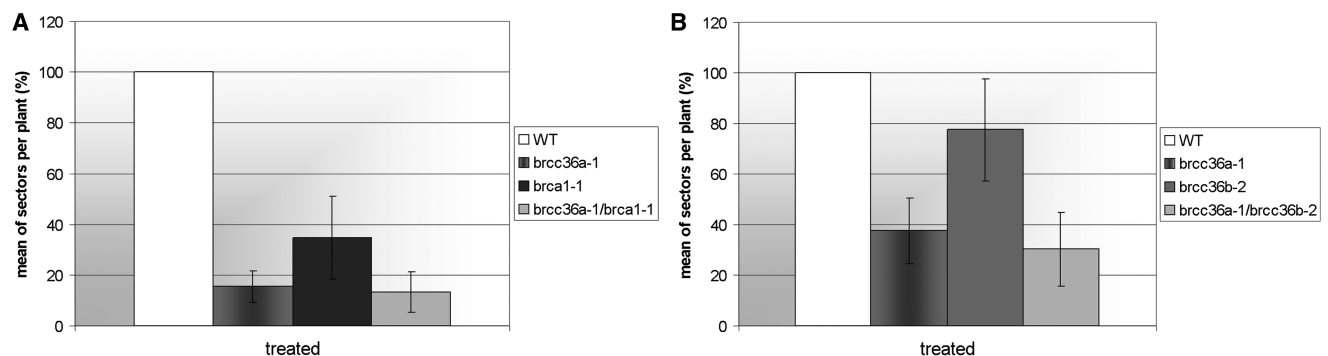


Figure 4. HR efficiencies of double mutants in the 651 background. (A) *Atbrcc36a-1*, *Atbrca1-1* and the double mutant. (B) *Atbrcc36a-1*, *b-2*, and the double mutant. Figures show the recombination efficiencies in percent, normalized to the wild-type control, in bleomycin treated plants. Bars represent standard deviations.

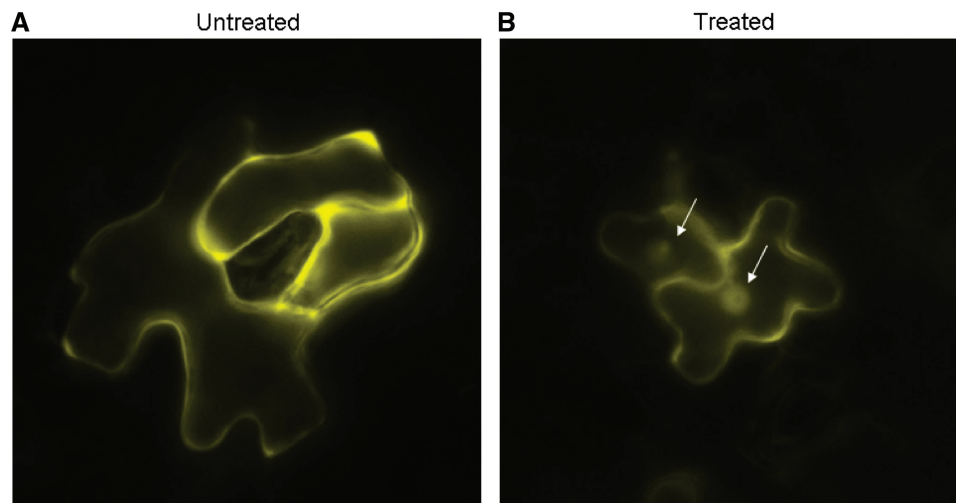


Figure 5. Localization of a BRCC36A-YFP fusion construct in *Arabidopsis* epidermal cells without treatment and 1 h after treatment with bleomycin. (A) YFP- images of plantlets without treatment. BRCC36A is mainly localized in the cytoplasm. (B) YFP-images of treated plantlets. One hour after application of genotoxic stress BRCC36A can also be detected in the nucleus. Arrows indicate the nucleus.

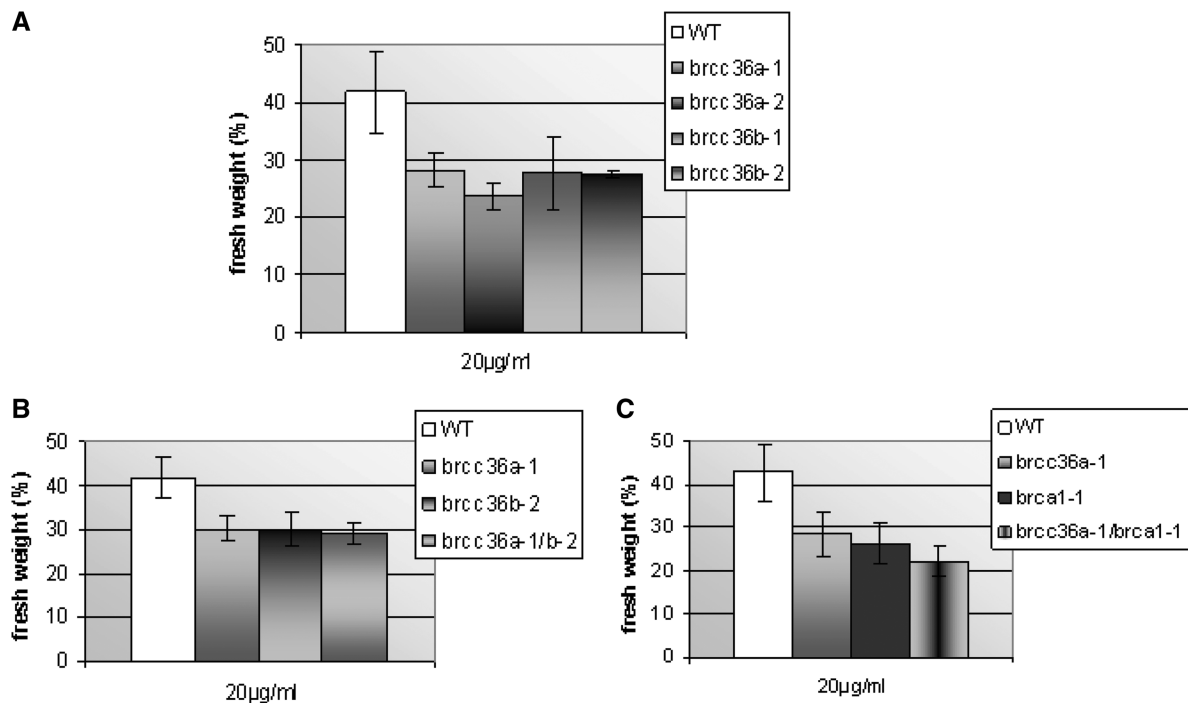


Figure 6. Sensitivity of *Atbrcc36a-1/-2*, *Atbrcc36b-1/-2*, *Atbrca1-1* and double mutants to the mutagenic agent Mitomycin C. Figures show the mean weight of the treated seedlings determined in six independent experiments calculated as percent of the weight of the same genotype under control conditions. Bars represent standard deviations. (A) Sensitivity of the single mutants. (B) Sensitivity of *Atbrcc36a-1*, *Atbrcc36b-2* and the corresponding double mutant. (C) Sensitivity of *Atbrcc36a-1*, *Atbrca1-1* and the corresponding double mutant.

in this communication for somatic HR. This result was expected, as a defect in HR has been reported after a knockdown of BRCA1 expression in mammalian cells (32) and we reported previously that a knockout of the heterodimeric partner of BRCA1, BARD1, also leads to a defect in HR in *Arabidopsis* (19). However, neither BRCA1 mutants nor BARD1 mutants had a defect in fertility (19).

The main purpose of the current work was to characterize the role of two BRCC36 homologs in DNA repair.

Although it has been reported previously that BRCC36 depletion leads to radiation sensitivity in mammalian cells (10), nothing was known about the involvement of the protein in HR in any eukaryote. We were able to show that knockouts of either or both BRCC36 homologs have no visible effects on development or fertility of *A. thaliana*. This indicates that BRCC36 like BRCA1 (19) and in contrast to BRCA2 (18) has no essential role during meiosis. In contrast, BRCC36A is required for intra- and interchromosomal HR and DNA crosslink repair in

somatic cells. This question has not been addressed for BRCC36 homologs in animal systems before. Furthermore, we demonstrated for the first time that a BRCC36 homolog is epistatic to BRCA1 in respect to HR. These data, obtained in a plant, extend observations from mammals, which show that BRCA1 and BRCC36 localize to radiation induced DNA damage foci (11). Moreover, we could show that in *Arabidopsis* BRCC36A is not permanently present in the nucleus, but localizes there after application of genotoxic stress. It is tempting to speculate that its transport is dependent on DNA damage recognition and it will be interesting to define the factors involved in the underlying mechanism by transforming the BRCC36A-YFP fusion construct into *Arabidopsis* mutants that have a defect in DNA damage recognition.

The fact that the two BRCC36 homologs in *Arabidopsis* are more closely related to each other than to their human homolog indicates that they result from a recent gene duplication.

Intriguingly, both homologs differ in their biological function. Both proteins are identical at their N-Terminus, where the MPN-domain is located, indicating that this domain is not responsible for functional difference. Notable is the higher variability of both homologs in the middle of the protein, which may have an impact on the conformation and/or interaction with other proteins thus influencing the respective functions.

This phenomenon, that closely related homologs differ in their functions, is found in *Arabidopsis* quite often (35), also in genes involved in DNA repair: We reported before that, of two closely related RAD5 homologs, AtRAD5A and AtRAD5B, only AtRAD5A is involved in HR and DNA crosslink repair (36) and in case of the closely related RECQ helicases, AtRECQ4A and AtRECQ4B, even antagonistic functions for HR have been found (37). Thus, the function of duplicated genes might not be preserved in the genome for long if they stay functionally redundant. Often proteins are involved in a row of functions and after duplication some functions might be taken over by one and others by the other homolog. Thus, specific gene pairs might be in different transition stages between full redundancy and non-, sub- or even neofunctionalization. We found that BRCC36B has also some function in crosslink repair. The proteins' inability to substitute for each other could be most easily explained by the existence of different complexes that are both required for the same DNA repair pathway. Indeed, indirect evidence indicates that beside the BRCC/BRCA1 A-complex another BRCC36-containing complex, called BRISC (BRCC36-containing isopeptidase complex), with deubiquitinating activity is present in mammalian cells (12,38,39). We speculate that BRCC36A might be a member of both complexes in *Arabidopsis*, whereas BRCC36B might only be part of one of these complexes, in which it might have a non-redundant function to BRCC36A. The fact that the moss *Physcomitrella patens* harbors a BRCC36 homolog, but no BRCA1 and BARD1 homologs in its genome can be taken as further hint that BRCC36 has BRCA1-independent functions. Thus, AtBRCC36B might be

involved in AtBRCA1 independent functions in *Arabidopsis*.

At first glance it seems counterintuitive that the knock-out of BRCC36, which is involved in deubiquitination in humans, results in a phenotype similar to that caused by the knockout of BRCA1, which was shown to have ubiquitinating activity as a heterodimer together with BARD1. However, the opposing enzyme activities might target different substrates. It has been shown that K63-polyubiquitinated histones are deubiquitinated by BRCC36 and its partners in mammalian cells (12,13,39), whereas the substrate for BRCA1/BARD1 ubiquitination in DNA repair is still elusive. Indeed, the association of BRCC36 with a DSB might be a prerequisite for BRCA1-mediated repair. Moreover, the release of BRCA1 and its partners from DNA after repair might be favored by BRISC-mediated deubiquitination.

Beside the two BRCC36 homologs, another complex partner, BRCC45, can be found as single copy gene in the *Arabidopsis* genome. It will be interesting to define its biological function *in planta*, too.

SUPPLEMENTARY DATA

Supplementary Data are available at NAR Online.

FUNDING

Funding for open access charge: Karlsruhe Institute of Technology.

Conflict of interest statement. None declared.

REFERENCES

- O'Donovan,P.J. and Livingston,D.M. (2010) BRCA1 and BRCA2: breast/ovarian cancer susceptibility gene products and participants in DNA double-strand break repair. *Carcinogenesis*, **31**, 961–967.
- Hall,J.M., Lee,M.K., Newman,B., Morrow,J.E., Anderson,L.A., Huey,B. and King,M.C. (1990) Linkage of early-onset familial breast cancer to chromosome 17q21. *Science*, **250**, 1684–1689.
- Joazeiro,C.A. and Weissman,A.M. (2000) RING finger proteins: mediators of ubiquitin ligase activity. *Cell*, **102**, 549–552.
- Hu,Y.-F., Hao,Z.L. and Li,R. (1999) Chromatin remodeling and activation of chromosomal DNA replication by an acidic transcriptional activation domain from BRCA1. *Genes Dev.*, **13**, 637–642.
- Deng,C.-X. (2006) BRCA1: cell cycle checkpoint, genetic instability, DNA damage response and cancer evolution. *Nucleic Acids Res.*, **34**, 1416–1426.
- Greenberg,R.A. (2008) Recognition of DNA double strand breaks by the BRCA1 tumor suppressor network. *Chromosoma*, **117**, 305–317.
- Huen,M.S.Y., Sy,S.M.H. and Chen,J. (2010) BRCA1 and its toolbox for maintenance of genome integrity. *Nat. Rev. Mol. Cell. Biol.*, **11**, 138–148.
- Sobhian,B., Shao,G., Lilli,D.R., Culhan,A.C., Moreau,L.A., Xia,B., Livingston,D.M. and Greenberg,R.A. (2007) RAP80 targets BRCA1 to specific ubiquitin structures at DNA damage Sites. *Science*, **316**, 1198–1202.
- Kim,H., Chen,J. and Yu,X. (2007) Ubiquitin-binding protein RAP80 mediates BRCA1-dependent DNA damage response. *Science*, **316**, 1202–1205.
- Dong,Y., Hakimi,M.-A., Chen,X., Kumaraswamy,E., Cooch,N.S., Godwin,A.K. and Shiekhattar,R. (2003) Regulation of BRCC, a

- holoenzyme complex containing BRCA1 and BRCA2, by a signalosome-like subunit and its role in DNA repair. *Mol. Cell*, **12**, 1087–1099.
11. Chen, X., Arciero, C.A., Wang, C., Broccoli, D. and Godwin, A.K. (2006) BRCC36 is essential for ionizing radiation-induced BRCA1 phosphorylation and nuclear foci formation. *Cancer Res.*, **66**, 5039–5045.
 12. Cooper, E.M., Cutcliffe, C., Kristiansen, T.Z., Pandey, A., Pickart, C.M. and Cohen, R.E. (2009) K63-specific deubiquitination by two JAMM/MPN⁺ complexes: BRISC-associated Brcc36 and proteasomal Pih1. *EMBO J.*, **28**, 621–631.
 13. Shao, G., Lilli, D.R., Patterson-Fortin, J., Coleman, K.A., Morrissey, D.E. and Greenberg, R. (2009) The Rap80-BRCC36 de-ubiquitinating enzyme complex antagonizes RNF8-Ubc13-dependent ubiquitination events at DNA double strand breaks. *PNAS*, **106**, 3166–3171.
 14. Boulton, S.J., Martin, J.S., Polanowska, J., Hill, D.E., Gartner, A. and Vidal, M. (2004) BRCA1/BARD1 orthologues required for DNA repair in *Caenorhabditis elegans*. *Curr. Biol.*, **14**, 33–39.
 15. Joukov, V., Chen, J., Fox, E.A., Green, J.B. and Livingston, D.M. (2001) Functional communication between endogenous BRCA1 and its partner, BARD1, during *Xenopus laevis* development. *PNAS*, **98**, 12078–12083.
 16. Lafarge, S. and Montane, M.-H. (2003) Characterization of *Arabidopsis thaliana* ortholog of the human breast cancer susceptibility gene 1: AtBRCA1, strongly induced by gamma rays. *Nucleic Acids Res.*, **31**, 1148–1155.
 17. Abe, K., Osakabe, K., Ishikawa, Y., Tagiri, A., Yamanouchi, H., Takyuu, T., Yoshioka, T., Ito, T., Kobayashi, M., Shinozaki, K. *et al.* (2009) Inefficient double-strand DNA break repair is associated with increased fasciation in *Arabidopsis* BRCA2 mutants. *J. Exp. Bot.*, **60**, 2751–2761.
 18. Siaud, N., Dray, E., Gy, I., Gerard, E., Takvorian, N. and Doutriaux, M.P. (2004) BRCA2 is involved in meiosis in *Arabidopsis thaliana* as suggested by its interaction with DMC1. *EMBO J.*, **23**, 1392–1401.
 19. Reidt, W., Wurz, R., Waniecek, K., Chu, H.H. and Puchta, H. (2006) A homologue of the breast cancer-associated gene BARD1 is involved in DNA repair in plants. *EMBO J.*, **25**, 4326–4337.
 20. Alonso, J.M., Stepanova, A.N., Leisse, T.J., Kim, C.J., Chen, H., Shinn, P., Stevenson, D.K., Zimmerman, J., Barajas, P., Cheuk, R. *et al.* (2003) Genome-Wide Insertional Mutagenesis of *Arabidopsis thaliana*. *Science*, **301**, 653–657.
 21. Rosso, M.G., Li, Y., Strizhov, N., Reiss, B., Dekker, K. and Weisshaar, B. (2003) An *Arabidopsis thaliana* T-DNA mutagenized population (GABI-Kat) for flanking sequence tag-based reverse genetics. *Plant Mol. Biol.*, **53**, 247–225.
 22. Chen, I.P., Haehnel, U., Altschmied, L., Schubert, I. and Puchta, H. (2003) The transcriptional response of *Arabidopsis* to genotoxic stress — a high-density colony array study (HDCA). *Plant J.*, **35**, 771–786.
 23. Swoboda, P., Gal, S., Hohn, B. and Puchta, H. (1994) Intrachromosomal homologous recombination in whole plants. *EMBO J.*, **13**, 484–489.
 24. Molinier, J., Ries, G., Bonhoeffer, S. and Hohn, B. (2004) Interchromatid and Interhomolog Recombination in *Arabidopsis thaliana*. *Plant Cell*, **16**, 342–352.
 25. Schmidt-Puchta, W., Orel, N., Kyryk, A. and Puchta, H. (2004) Intrachromosomal homologous recombination in *Arabidopsis thaliana*. *Methods Mol. Biol.*, **262**, 25–34.
 26. LeClerc, S. and Bartel, B. (2001) A library of *Arabidopsis* 35S-cDNA lines for identifying novel mutants. *Plant Mol. Biol.*, **46**, 695–703.
 27. Clough, S.J. and Bent, A.F. (1998) Floral dip: a simplified method for *Agrobacterium* mediated transformation of *Arabidopsis thaliana*. *Plant J.*, **16**, 735–743.
 28. Raes, J., Vandepoele, K., Simillion, C., Saeys, Y. and Van de Peer, Y. (2003) “Investigating ancient duplication events in the *Arabidopsis* genome.”. *J. Struct. Funct. Genomics*, **3**, 117–129.
 29. Rensing, S.A., Lang, D., Zimmer, A.D., Terry, A., Salamov, A., Shapiro, H., Nishiyama, T., Perroud, P.-F., Lindquist, E.A., Kamisugi, Y. *et al.* (2008) The Physcomitrella Genome Reveals Evolutionary Insights Into The Conquest of Land by Plants. *Science*, **319**, 64–69.
 30. Culligan, K.M., Robertson, C.E., Foreman, J., Doerner, P. and Britt, A.B. (2006) ATR and ATM play both distinct and additive roles in response to ionizing radiation. *Plant J.*, **48**, 947–961.
 31. Povirk, L.F., Wubker, W., Kohnlein, W. and Hutchinson, F. (1977) DNA double-strand breaks and alkali-labile bonds produced by bleomycin. *Nucleic Acids Res.*, **4**, 3573–3580.
 32. Moynahan, M.E., Chiu, J.W., Koller, B.H. and Jasin, M. (1999) BRCA1 controls homology-directed DNA repair. *Mol. Cell*, **4**, 511–518.
 33. Hartung, F., Suer, S., Bergmann, T. and Puchta, H. (2006) The role of AtMUS81 in DNA repair and its genetic interaction with the helicase AtRecQ4A. *Nucleic Acids Res.*, **34**, 4438–4448.
 34. Bleuyard, J.Y., Gallego, M.E. and White, C.I. (2006) Recent advances in understanding of the DNA double-strand break repair machinery of plants. *DNA Repair*, **5**, 1–12.
 35. Briggs, G.C., Osmont, K.S., Shindo, C., Sibout, R. and Hardtke, C.S. (2006) Unequal genetic redundancies in *Arabidopsis* — a neglected phenomenon. *Trends Plant Sci.*, **11**, 492–498.
 36. Chen, I.-P., Mannuss, A., Orel, N., Heitzeberg, F. and Puchta, H. (2008) A homologue of ScRAD5 is involved in DNA repair and homologous recombination in *Arabidopsis*. *Plant Physiol.*, **146**, 1786–1796.
 37. Hartung, F., Suer, S. and Puchta, H. (2007) Two closely related RecQ-helicases have antagonistic roles in homologous recombination and DNA repair in *Arabidopsis thaliana*. *PNAS*, **104**, 18836–18841.
 38. Shao, G., Patterson-Fortin, J., Messick, T.E., Feng, D., Shanbhag, N., Wang, Y. and Greenberg, R.A. (2009) MERIT40 controls BRCA1-Rap80 complex integrity and recruitment to DNA double-strand breaks. *Genes Dev.*, **23**, 740–754.
 39. Cooper, E.M., Boeke, J.D. and Cohen, R.E. (2010) Specificity of the BRISC deubiquitinating enzyme is not due to selective binding to K63-linked polyubiquitin. *J. Bio. Chem.*, **285**, 10344–10352.