

Establishing a research information system as part of an integrated approach to information management

Frank Scholze, Jan Maier (AVEDAS), Regine Tobias

LIBER Conference, Barcelona, 30.6.2011

KIT-BIBLIOTHEK



Outline

- Karlsruhe Institute of Technology (KIT)
- Karlsruhe integrated Information Management (KIM)
- CRIS and Repositories
- KIM-FIS - CRIS@KIT

KIT – Some facts

Campus North



Campus South



Helmholtz Mission

12 Programs
27 Institutes
3.864 Employees
355 Mio. € Budget

University Mission

11 Faculties
130 Institutes
5.133 Employees
20.700 Students
320 Mio. € Budget

2243 doctoral students

- Thematic overlap
- Excellent synergy

The way to KIT



Decision of the Excellence Initiative:
October 13, 2006



Submission of the KIT concept
May 31, 2007



KIT Foundation
February 22, 2008

One legal entity
October 1, 2009



Corner stone paper
November 21, 2006



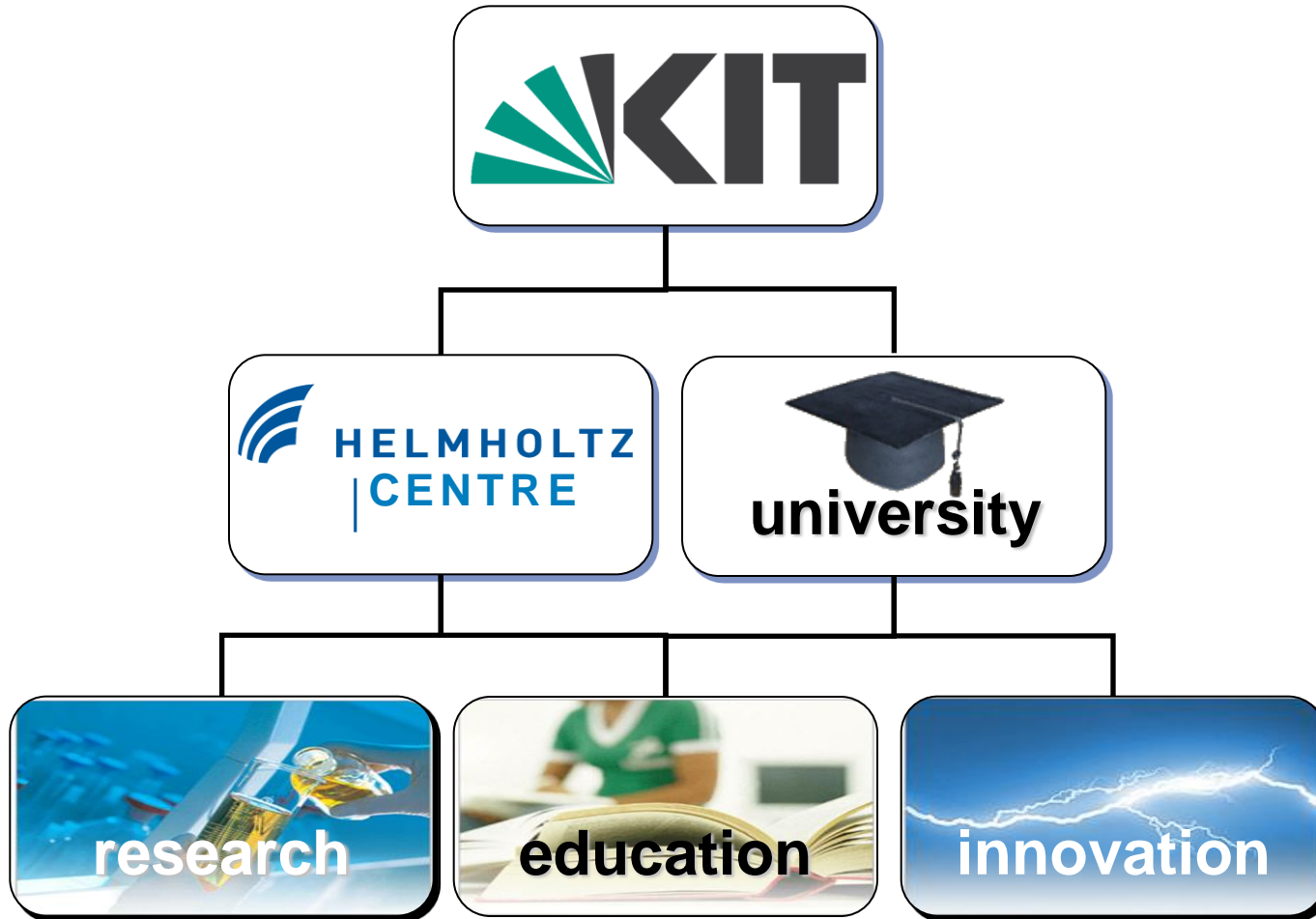
Signature of the KIT contract
December 13, 2007



KIT Law
July 24, 2009



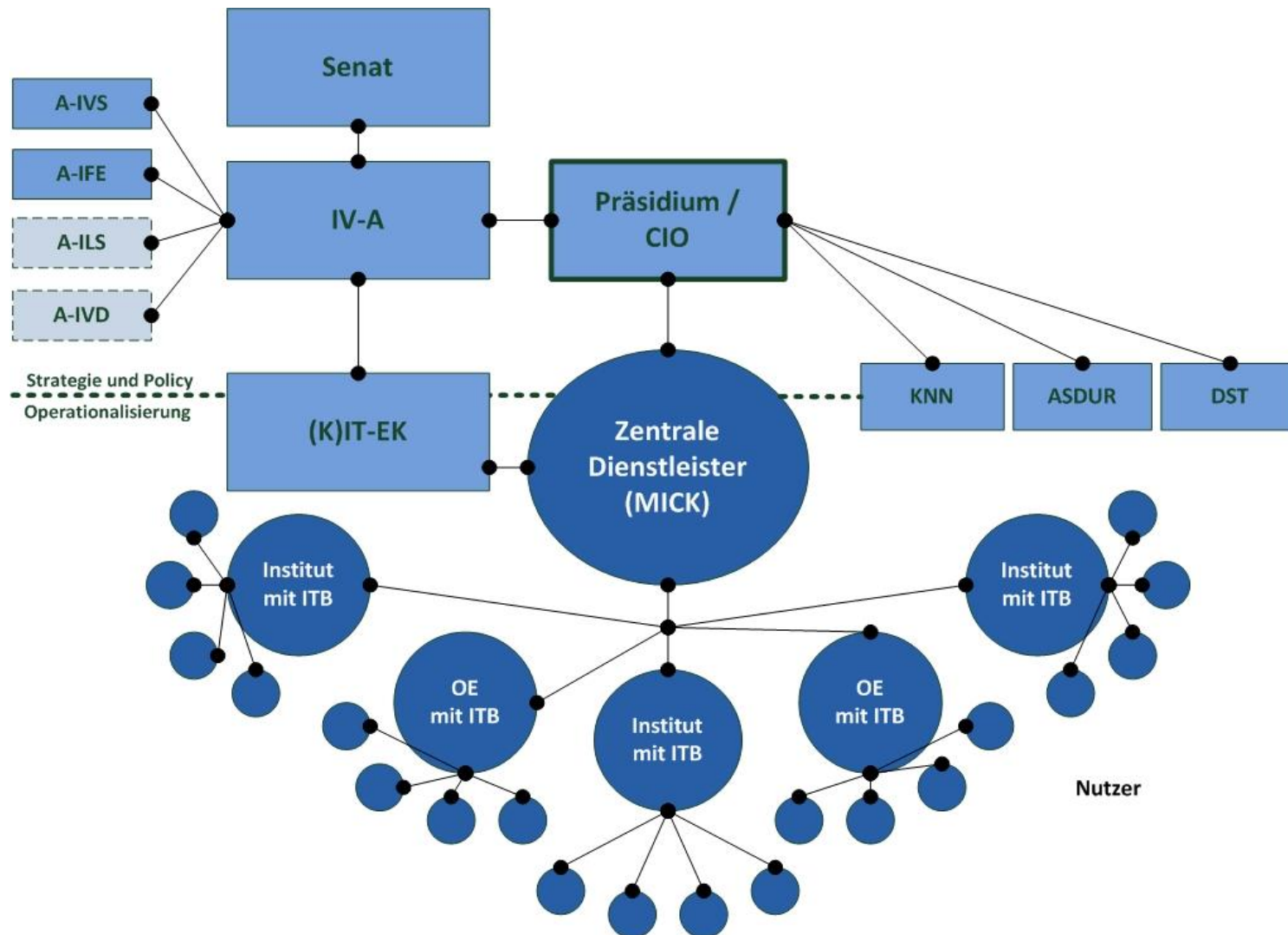
KIT – One legal entity, two missions, three tasks



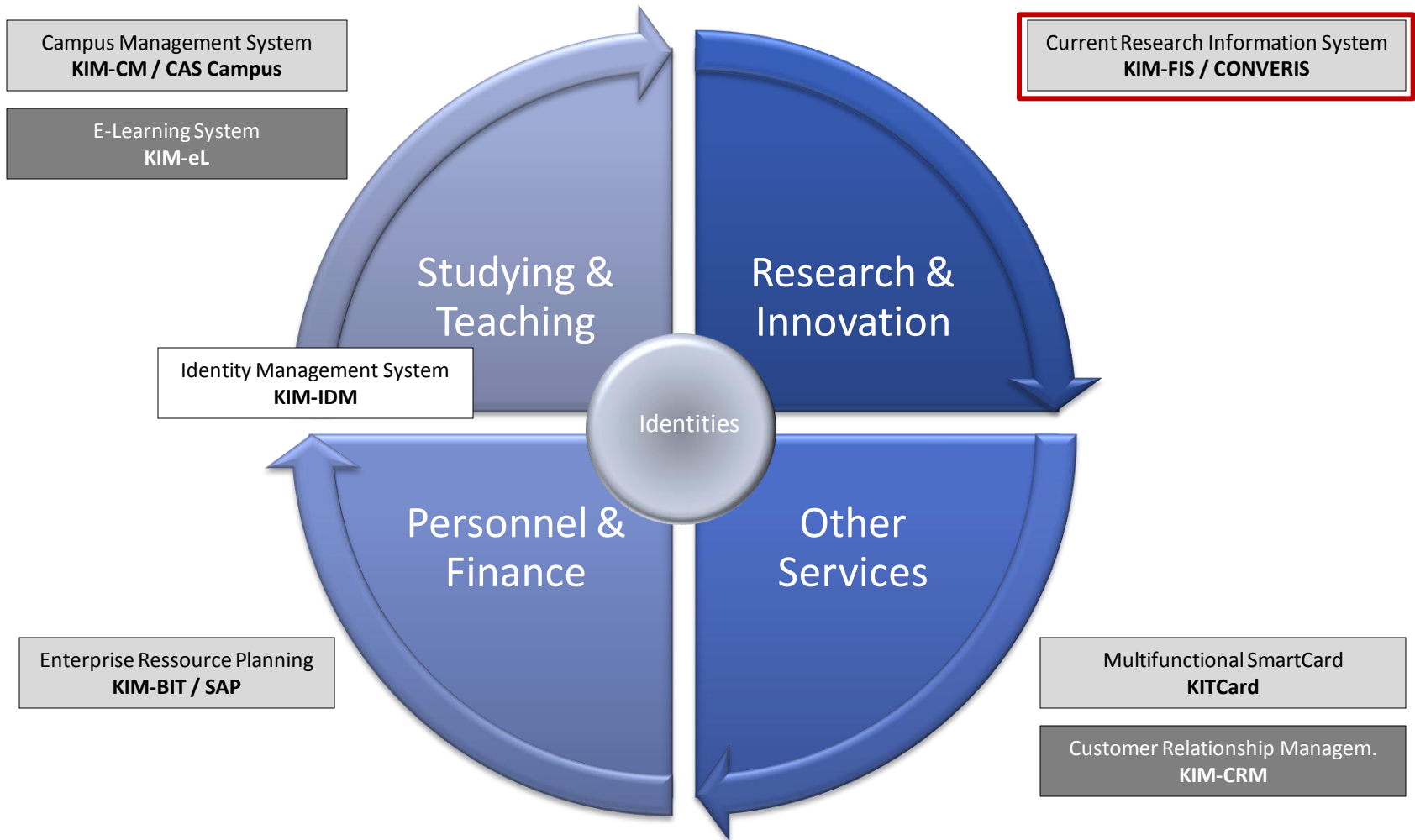
Outline

- Karlsruhe Institute of Technology (KIT)
- Karlsruhe integrated Information Management (KIM)
- CRIS and Repositories
- KIM-FIS - CRIS@KIT

KIM- Integrated Information Management at KIT



KIM - Integrated Information Management at KIT



□ = completed Project □ = current Project ■ = intended Project

Outline

- Karlsruhe Institute of Technology (KIT)
- Karlsruhe integrated Information Management (KIM)
- **CRIS and Repositories**
- KIM-FIS - CRIS@KIT

CRIS and OAR

- Support the entire life cycle of the research process
- Support strategic research planning
- Support the development of an e-science infrastructure

- Rich and contextual information network
- Integration and interoperability

Trends in Integration and Interoperability

Developing
repository
into CRIS

Repositories
and CRIS as
linked
systems

Developing
CRIS into
repository

Outline

- Karlsruhe Institute of Technology (KIT)
- Karlsruhe integrated Information Management (KIM)
- CRIS and Repositories
- **KIM-FIS - CRIS@KIT**

Initial Situation

- Two publication databases (135.000 records)
- Two repositories (9000 records)
- Two project databases
- Two „cultures“ of research management and reporting

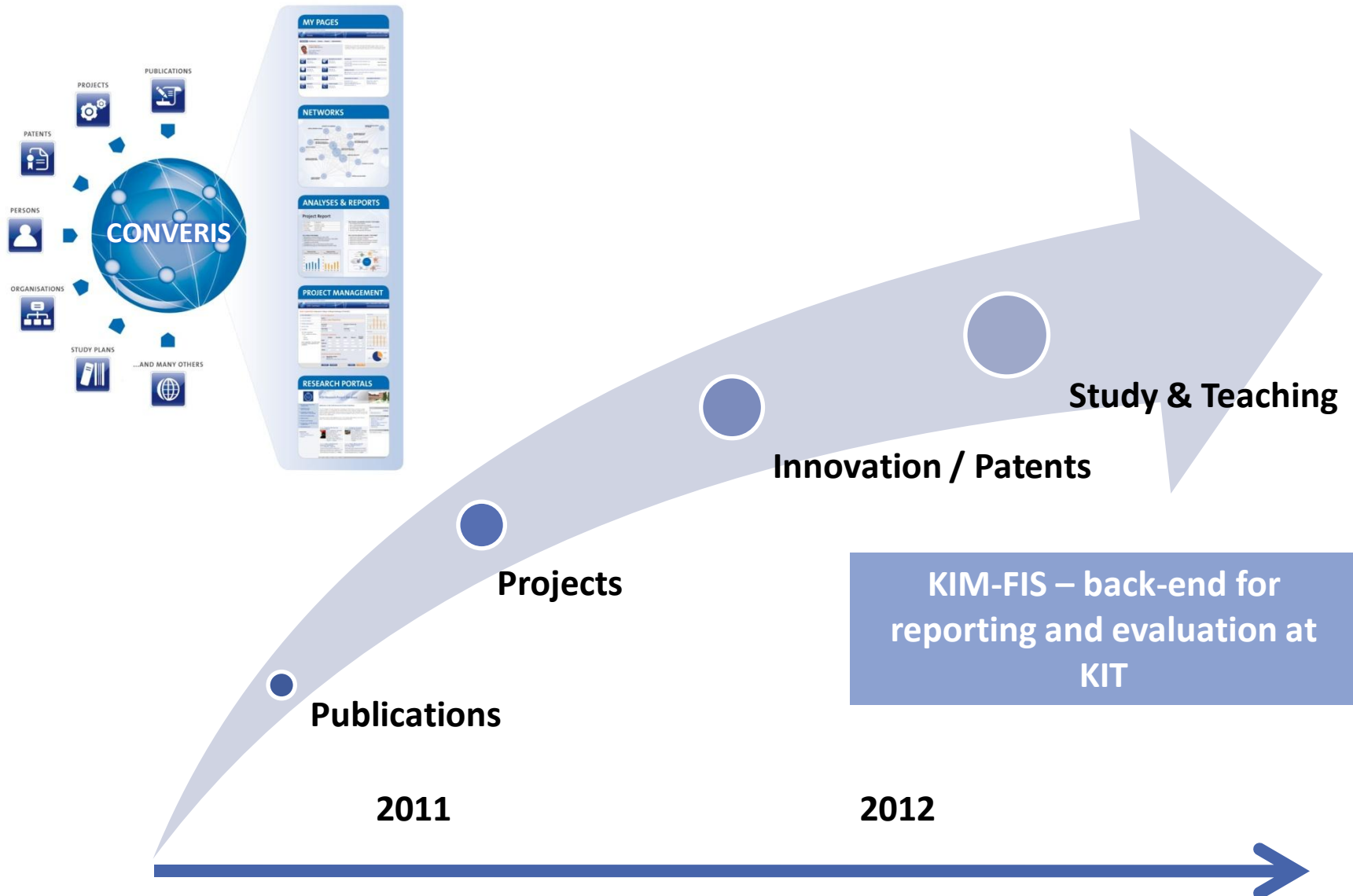
- 8000 staff
- 650 Mio. € turnover

- Multi-faceted Open Access strategy (policy, publication fund, institutional publishing house KIT Scientific Publishing)

KIM-FIS

- March 2010: Executive board of KIT initiates the project to build a CRIS
- July 2010: In a tendering process KIT decides to choose CONVERIS (by AVEDAS AG) as a software platform
- Agile development and long term development of the product in a strategic partnership of KIT and AVEDAS
- December 2010: First demonstrator presented to stakeholder groups

KIM-FIS: Think Big in Small Steps



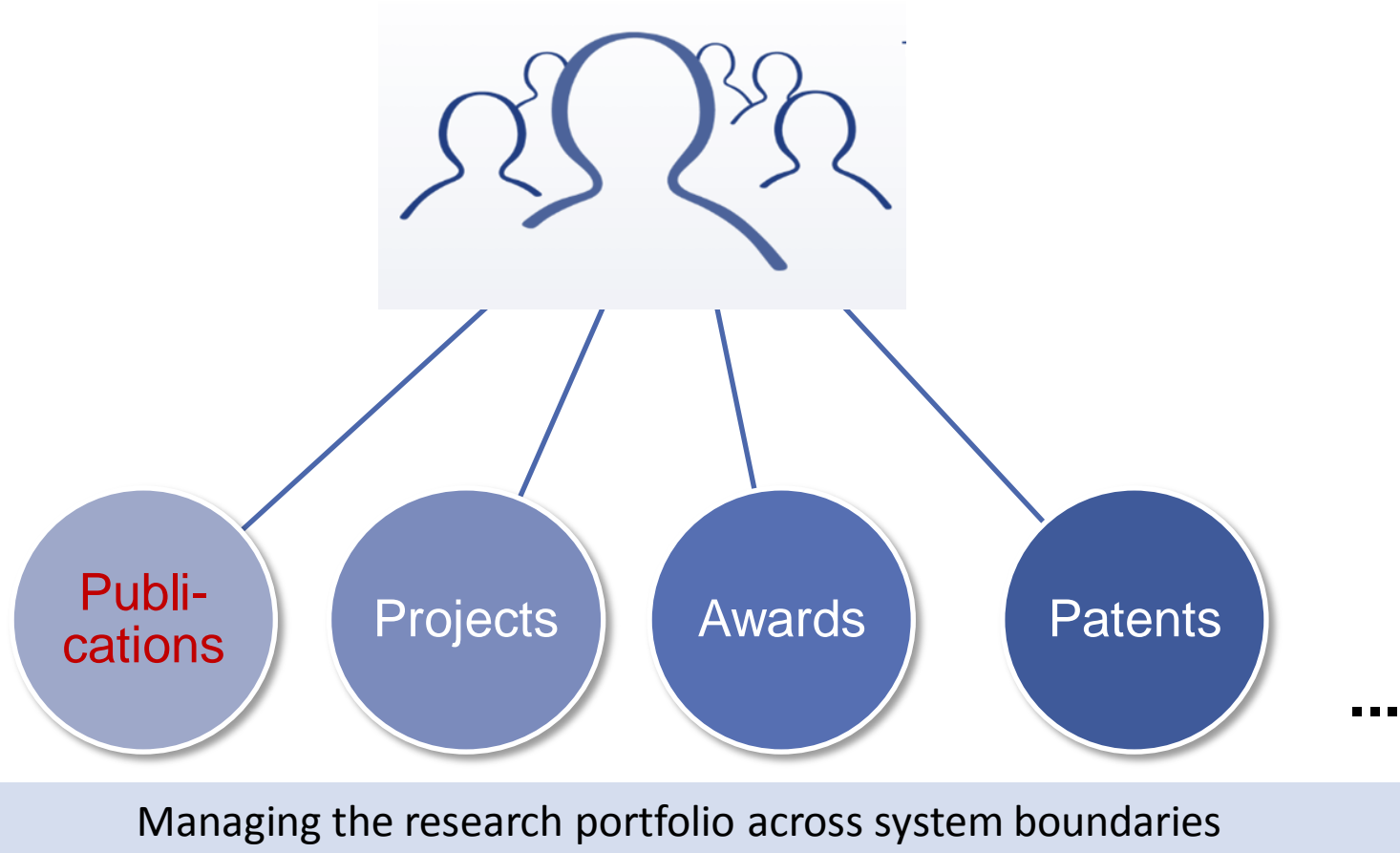
KIM-FIS: KIT Partners

- Project management:
 - Office of the Chief Information Officer (CIO)
 - President's Office (PST)

- Partners:
 - KIT-Library (BIB)
 - Department of Research (FOR)

- Associate partners:
 - Steinbuch Center for Computing (SCC)
 - Innovation Department (IMA)
 - Department of Organization Development (ORBIT)
 - Public Relations and Marketing Department (PKM)

Comprehensive view on research information



...

Managing the research portfolio across system boundaries

KIM-FIS / CONVERIS: Repository Development

- Standardization (DINI Certificate)
- Interfaces
 - OAI-PMH
 - OpenAIRE
 - SWORD
- Usage statistics → OA Statistics, PIRUS (Counter)
- Long term archive formats (PDF/A)
- Persistent identifiers (DOI, URN)
- Integration into library workflows
- Roles and rights management



KIM-FIS / CONVERIS: Linking research information

Forschung

- Kompetenzbereiche
- Zentren
- Schwerpunkte
- HGF Programme**
 - Programm Atmosphäre und Klima (AK)**
 - Programm Synchrotronstrahlung (ANKA)
 - Programm Astroteilchenphysik (ASTRO)
 - Programm BioGrenzflächen (BG)
 - Programm Erneuerbare Energien (EE)
 - Programm Kernfusion (FUSION)
 - Programm Nano- und Mikrosysteme (NANOMIKRO)
 - Programm Nukleare Sicherheitsforschung (NSF)
 - Programm Rationelle Energiewandlung und -nutzung (REUN)
 - Programm Technologien, Innovation & Gesellschaft und Energiesystemanalyse (TIG)
 - Programm Wissenschaftliches Rechnen (WR)

Karlsruher Institut für Technologie > HGF Programme > Programm Atmosphäre und Klima (AK)

[Drucken >](#) |
 [PDF >](#) |
 [Seite empfehlen >](#)

Suche

[Erweiterte Suche](#)

PREvention, Information and Early Warning pre-operational services to support the management of risks (PREVIEW)

Beschreibung

PREVIEW proposes to develop, at the European scale, new or enhanced information for risk the management in support of Civil Protection Units and local or regional authorities making the best use of the most advanced research and technology outcomes in Earth Observation. Services will be validated under pre-operational conditions. The risks from the direct impact of atmospheric events, from their hydrological consequences, geophysical events and in some cases be worsened or directly caused by industrial activities. The challenging issue is to enhance risk mitigation through better prevention, better assessment and more accurate assessment at various time and spatial scales of situations at risk. Improved timely dissemination of meaningful and adapted early warning information, the societal needs and to the operations of rescue forces. This has to be done in a coordinated way of all actors and citizens to develop risk awareness and culture. The main axis of development through PREVIEW is: Improvement of the services contents: quality and harmonisation of information services supporting the decision making at the operational level, improvement of information collection, aggregation and intelligence methodologies, developing synergistic cooperative work and inter-operability capacities among operators for a widespread application of the best solutions at national, regional, and European scale.

Projektzeitraum 04/2005 - 12/2008
Projektstatus Bewilligt
Mittelgeber Europäische Union

[Projektteilnehmer \(1\)](#) |
 [Institute \(1\)](#) |
 [Publikationen \(1\)](#) |
 [Forschungsgebiete \(3\)](#)

Jahr:
 Alle Publikationsarten
 Alphabetisch sortieren

[Symposium 2007 - Extreme weather: Forecast and damage prevention - 29th and 30th march 2007 - Sparkassenakademie Rastatt](#)

State: Validated

Symposium 2007 - Extreme weather: Forecast and damage prevention - 29th and 30th March 2007 - Sparkassenakademie Rastatt. Kottmeier C, von der Sahl UBW. Gaia-Ecological Perspectives Society. 16(3): A2A2.

1. Key information *

2. Authors

3. Project & Program

4. Library

5. History

INTERNAL / EXTERNAL

Please specify if this publication was INTERNALLY created at KIT.

External
 Internal

RELATED PROJECTS

PREvention, Information and Early Warning pre-operational services to support the management of risks F&E
[remove >>](#)

Select >>

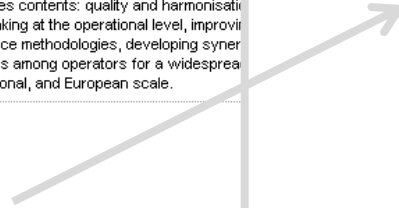
PUBLICATION APPLICATION

Select >>


PROGRAM

Regionaler Klimawandel und Stadt-Umland Wechselwirkungen F&E 12.02.02
[remove >>](#)

Select >>



KIM-FIS / CONVERIS: OA Publication management



KIT
Karlsruher Institut für Technologie

FORSCHUNG | LEHRE | INNOVATION | SERVICE

Karlsruher Institut für Technologie

Forschung

- Kompetenzbereiche
- Zentren
- Schwerpunkte
- HGF Programme

Drucken » | PDF » | Seite empfehlen

Internationalisation of information services for publishers' open access policies: the DINI multilingual integration layer

Scholze Frank

Zusammenfassung

It is essential for the strategy of open access self-archiving that scientific authors are given comprehensive information on publisher copyright policies. DINI, the German Initiative for Networked Information, has developed a German (and potentially multilingual) interface to the English SHERPA / RoMEO service to provide additional information on German publishers' open access policies. As a next step, this interface was enhanced to an integration layer combining different sources on publisher copyright policies. This integration layer can be used in many different contexts. Together with the SHERPA / RoMEO team, DINI aims to build an international support structure for open access information.

Publikationstyp	Zeitschriftenaufsatz
Jahr	2008
Publikationsstatus	Veröffentlicht
DOI	10.1186/1747-5341-3-19
Fachzeitschrift	Philosophy, Ethics, And Humanities In Medicine
Volltext	1747-5341-3-19.pdf (PDF / 234.8 KB)

Abstract:

It is essential for the strategy of open access self-archiving that scientific authors are given comprehensive information on publisher copyright policies. DINI, the German Initiative for Networked Information, has developed a German (and potentially multilingual) interface to the English SHERPA / RoMEO service to provide additional information on German publishers' open access policies. As a next step, this interface was enhanced to an integration layer combining different sources on publisher copyright policies. This integration layer can be used in many different contexts. Together with the SHERPA / RoMEO team, DINI aims to build an international support structure for open access information.

Keywords:
(Keyword1; Keyword2; ...)

DOI:
 [Show »](#)

[Lookup DOI »](#)


1 matching DOI(s) found.

Select DOI
Please verify the DOI by clicking on "Show" below. Click on "Done" to confirm your selection.

DOI: [10.1186/1747-5341-3-19](https://doi.org/10.1186/1747-5341-3-19) [Show »](#)

[Cancel »](#) [Done »](#)

Upload full-text

 File: [1747-5341-3-19.pdf \(PDF / 234.8 KB\)](#)
Caption:

[remove »](#)

[Upload »](#)

Information

- <http://www.kit.edu/eeb/cio/index.php>
- <http://www.bibliothek.kit.edu/cms/english/publishing.php>
- <http://www.avedas.com>
- *1st and 2nd Workshop on CRIS, CERIF and Institutional Repositories. May 2010 / 2011, Rome, Italy.*
<http://www.irpps.cnr.it/it/eventi/workshop-on-cris-cerif-and-institutional-repositories>
<http://www.irpps.cnr.it/it/eventi/2nd-workshop-on-cris-cerif-and-institutional-repositories-integrating-research-information-crisoar>